

Data Path : Z:\pestpcbsrv\HPCHEM1\ECD\_0\Data\PO110320\  
 Data File : PO073054.D  
 Signal(s) : Signal #1: ECD1A.CH Signal #2: ECD2B.CH  
 Acq On : 04 Nov 2020 1:00  
 Operator : DD\AJ  
 Sample : L4608-06  
 Misc :  
 ALS Vial : 41 Sample Multiplier: 1

**Instrument :**  
 ECD\_0  
**ClientSampled :**  
 DUP

**Manual Integrations**  
**APPROVED**  
 Ankita  
 11/4/2020 4:58:53 PM

Integration File signal 1: autoint1.e  
 Integration File signal 2: autoint2.e  
 Quant Time: Nov 04 05:55:01 2020  
 Quant Method : Z:\pestpcbsrv\HPCHEM1\ECD\_0\methods\PO102620.M  
 Quant Title : GC EXTRACTABLES  
 QLast Update : Sat Oct 31 07:06:26 2020  
 Response via : Initial Calibration  
 Integrator: ChemStation 6890 Scale Mode: Small noise peaks clipped

Volume Inj. : 2 µl  
 Signal #1 Phase : ZB-MR1 Signal #2 Phase: ZB-MR2  
 Signal #1 Info : 30Mx0.32mmx 0.50µ Signal #2 Info : 30M x 0.32mm x 0.25µm

| Compound                    | RT#1   | RT#2   | Resp#1  | Resp#2 | ng/ml   | ng/ml    |
|-----------------------------|--------|--------|---------|--------|---------|----------|
| -----                       |        |        |         |        |         |          |
| System Monitoring Compounds |        |        |         |        |         |          |
| 1) SA Tetrachlo...          | 4.947  | 4.021  | 1078747 | 719293 | 23.397  | 20.523   |
| 2) SA Decachlor...          | 10.975 | 9.299f | 887847  | 535357 | 24.032m | 16.053m# |

Target Compounds

(f)=RT Delta > 1/2 Window (#)=Amounts differ by > 25% (m)=manual int.

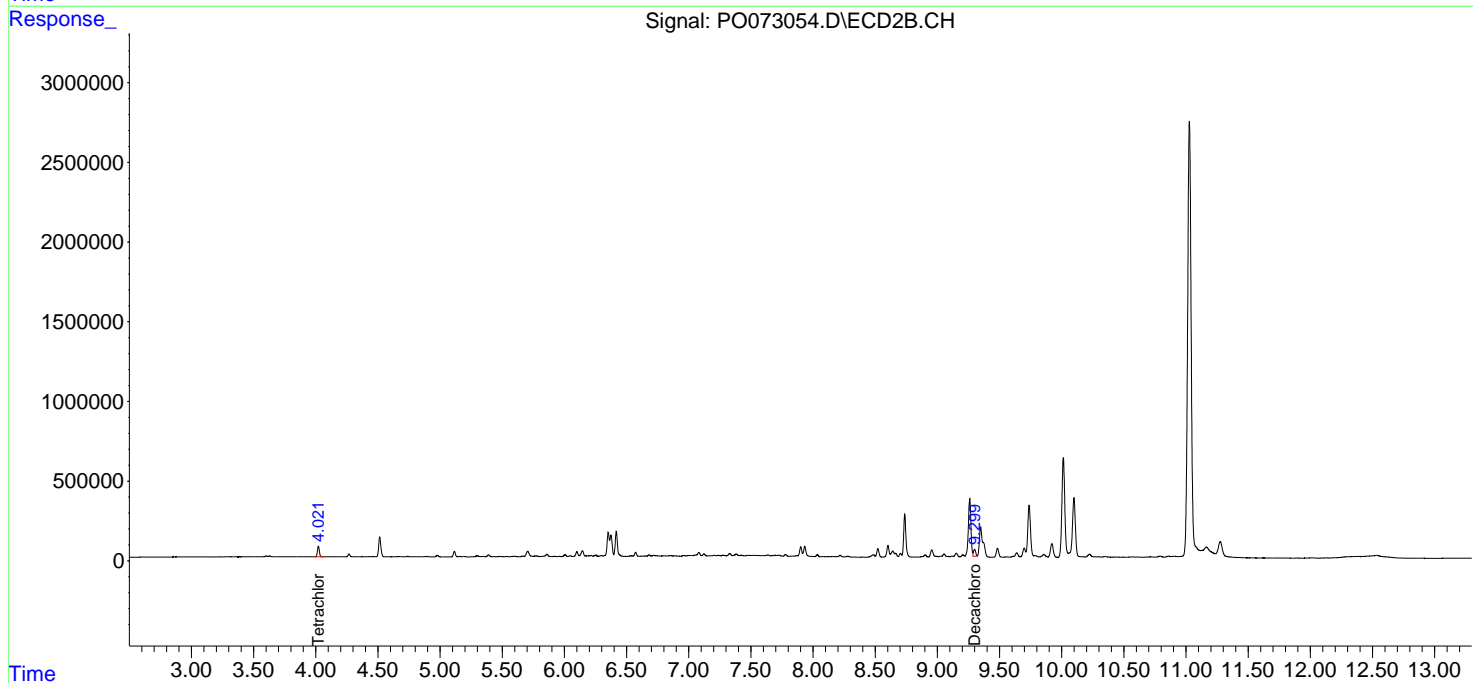
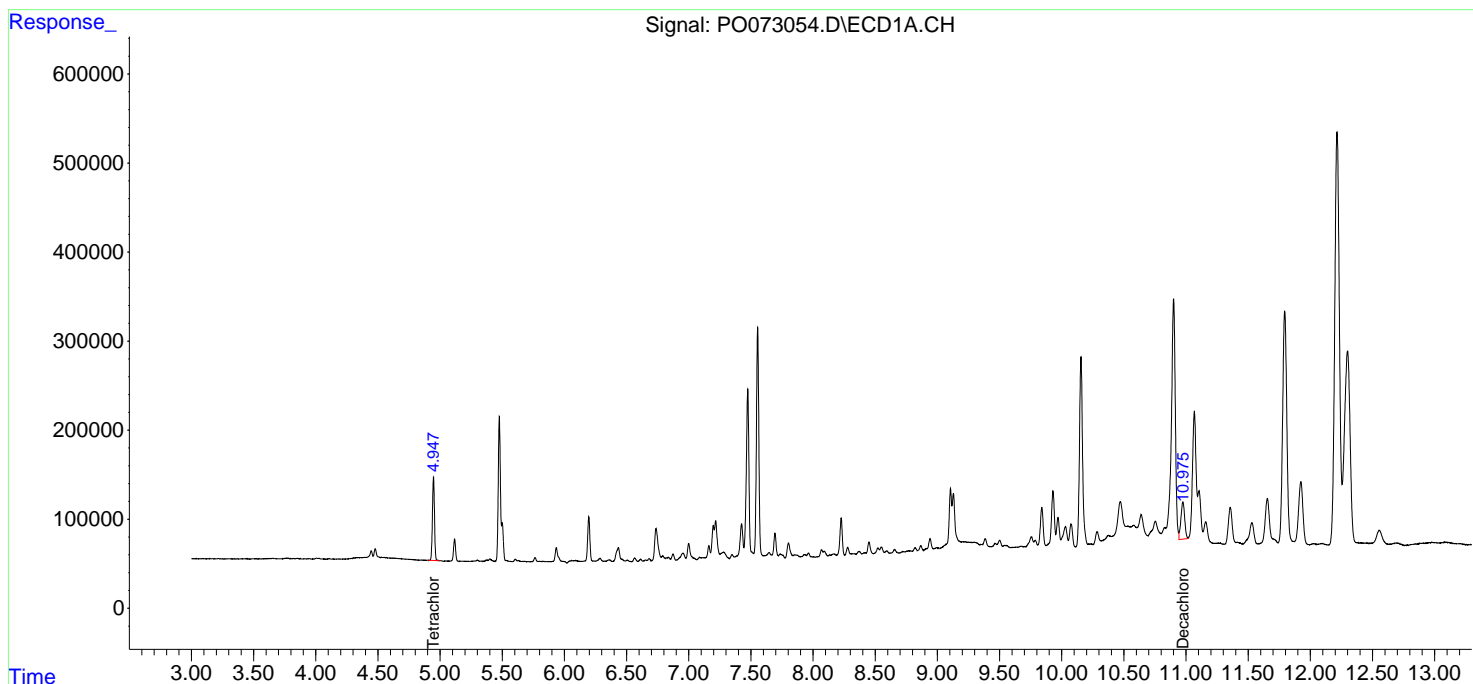
Data Path : Z:\pestpcbsrv\HPCHEM1\ECD\_0\Data\P0110320\  
 Data File : P0073054.D  
 Signal(s) : Signal #1: ECD1A.CH Signal #2: ECD2B.CH  
 Acq On : 04 Nov 2020 1:00  
 Operator : DD\AJ  
 Sample : L4608-06  
 Misc :  
 ALS Vial : 41 Sample Multiplier: 1

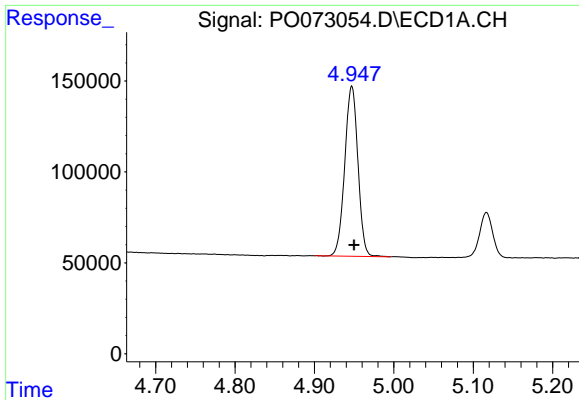
Instrument :  
 ECD\_O  
 ClientSampled :  
 DUP

Manual Integrations  
**APPROVED**  
 Ankita  
 11/4/2020 4:58:53 PM

Integration File signal 1: autoint1.e  
 Integration File signal 2: autoint2.e  
 Quant Time: Nov 04 05:55:01 2020  
 Quant Method : Z:\pestpcbsrv\HPCHEM1\ECD\_0\methods\P0102620.M  
 Quant Title : GC EXTRACTABLES  
 QLast Update : Sat Oct 31 07:06:26 2020  
 Response via : Initial Calibration  
 Integrator: ChemStation 6890 Scale Mode: Small noise peaks clipped

Volume Inj. : 2 µl  
 Signal #1 Phase : ZB-MR1 Signal #2 Phase: ZB-MR2  
 Signal #1 Info : 30Mx0.32mmx 0.50µ Signal #2 Info : 30M x 0.32mm x 0.25µm

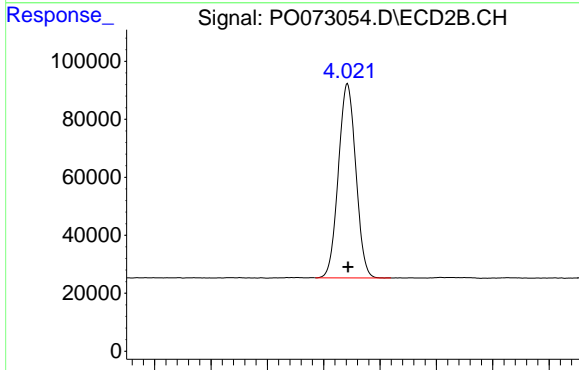




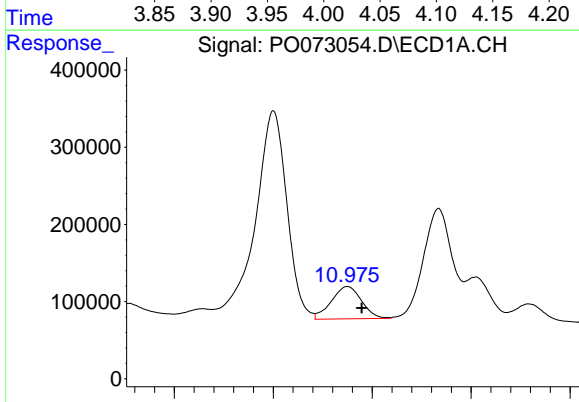
#1 Tetrachloro-m-xylene  
 R.T.: 4.947 min  
 Delta R.T.: -0.003 min  
 Response: 1078747  
 Conc: 23.40 ng/ml

Instrument :  
 ECD\_O  
 ClientSampled :  
 DUP

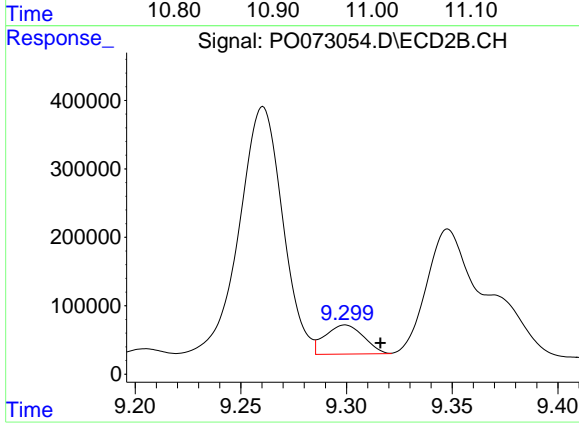
Manual Integrations  
 APPROVED  
 Ankita  
 11/4/2020 4:58:53 PM



#1 Tetrachloro-m-xylene  
 R.T.: 4.021 min  
 Delta R.T.: 0.000 min  
 Response: 719293  
 Conc: 20.52 ng/ml



#2 Decachlorobiphenyl  
 R.T.: 10.975 min  
 Delta R.T.: -0.015 min  
 Response: 887847  
 Conc: 24.03 ng/ml m



#2 Decachlorobiphenyl  
 R.T.: 9.299 min  
 Delta R.T.: -0.017 min  
 Response: 535357  
 Conc: 16.05 ng/ml m