

Data Path : Z:\pestpcbsrv\HPCHEM1\ECD_0\Data\PO110323\
 Data File : PO099374.D
 Signal(s) : Signal #1: ECD1A.ch Signal #2: ECD2B.ch
 Acq On : 04 Nov 2023 01:59
 Operator : YP/AJ
 Sample : AR1248CCC500
 Misc :
 ALS Vial : 5 Sample Multiplier: 1

Instrument :
 ECD_0
ClientSampleId :
 AR1248CCC500

Manual Integrations
APPROVED
 Reviewed By :Yogesh Patel 11/06/2023
 Supervised By :mohammad ahmed 11/06/2023

Integration File signal 1: autoint1.e
 Integration File signal 2: autoint2.e
 Quant Time: Nov 04 02:41:24 2023
 Quant Method : Z:\pestpcbsrv\HPCHEM1\ECD_0\methods\PO102523.M
 Quant Title : GC EXTRACTABLES
 QLast Update : Wed Oct 25 06:04:36 2023
 Response via : Initial Calibration
 Integrator: ChemStation

Volume Inj. : 2 µl
 Signal #1 Phase : ZB-MR1 Signal #2 Phase: ZB-MR2
 Signal #1 Info : 30Mx0.32mmx 0.50µ Signal #2 Info : 30M x 0.32mm x 0.25µm

Compound	RT#1	RT#2	Resp#1	Resp#2	ng/ml	ng/ml

System Monitoring Compounds						
1) SA Tetrachlo...	4.466	3.622	93300951	37386033	47.219	51.948m
2) SA Decachlor...	10.256	8.612	60038140	25771668	52.996m	48.034m
Target Compounds						
21) L5 AR-1248-1	5.639	4.701	17189767	7618914	505.988	549.706m
22) L5 AR-1248-2	5.913	4.938	25017049	10345999	478.033m	520.853
23) L5 AR-1248-3	6.118	4.979	27333380	11078206	479.721m	531.238
24) L5 AR-1248-4	6.523	5.150	28238909	12769076	517.845	519.417
25) L5 AR-1248-5	6.562	5.542	28808408	12156766	507.136	559.745

(f)=RT Delta > 1/2 Window (#)=Amounts differ by > 25% (m)=manual int.

Data Path : Z:\pestpcbsrv\HPCHEM1\ECD_O\Data\PO110323\
 Data File : PO099374.D
 Signal(s) : Signal #1: ECD1A.ch Signal #2: ECD2B.ch
 Acq On : 04 Nov 2023 01:59
 Operator : YP/AJ
 Sample : AR1248CCC500
 Misc :
 ALS Vial : 5 Sample Multiplier: 1

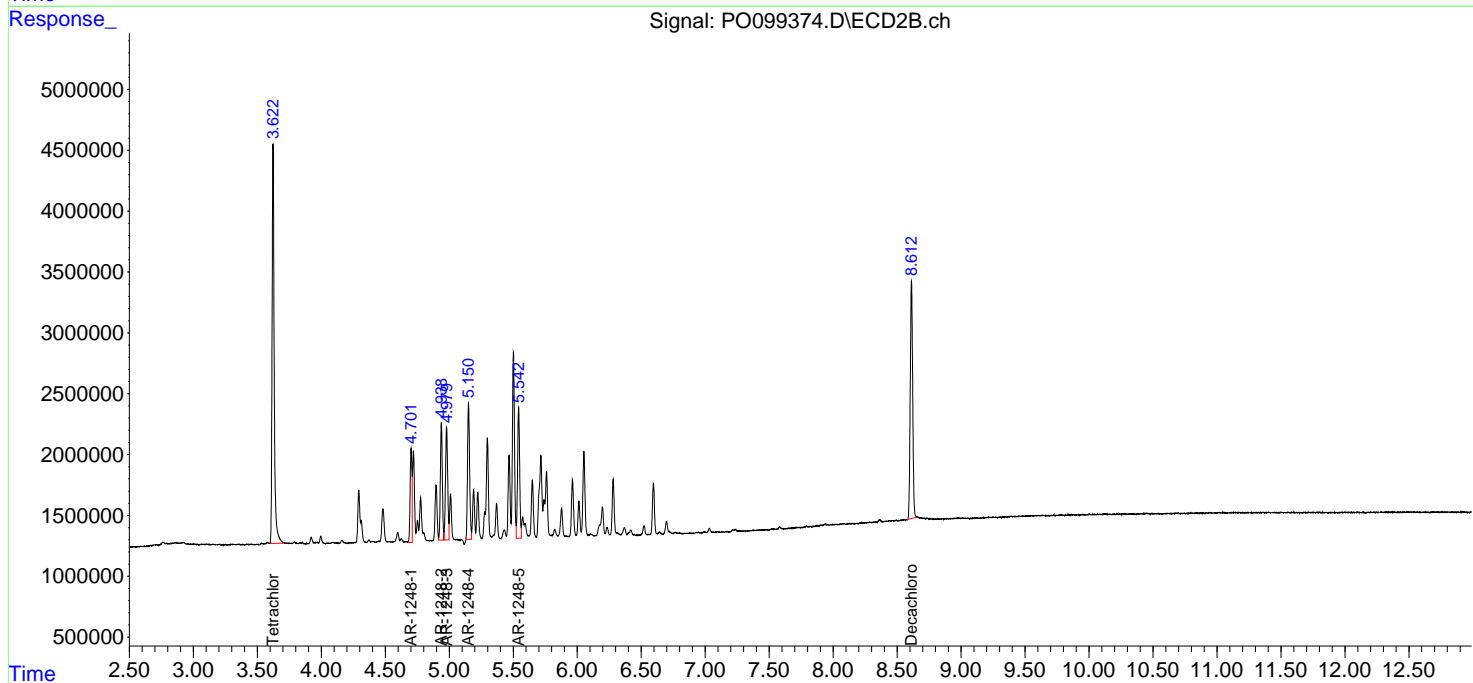
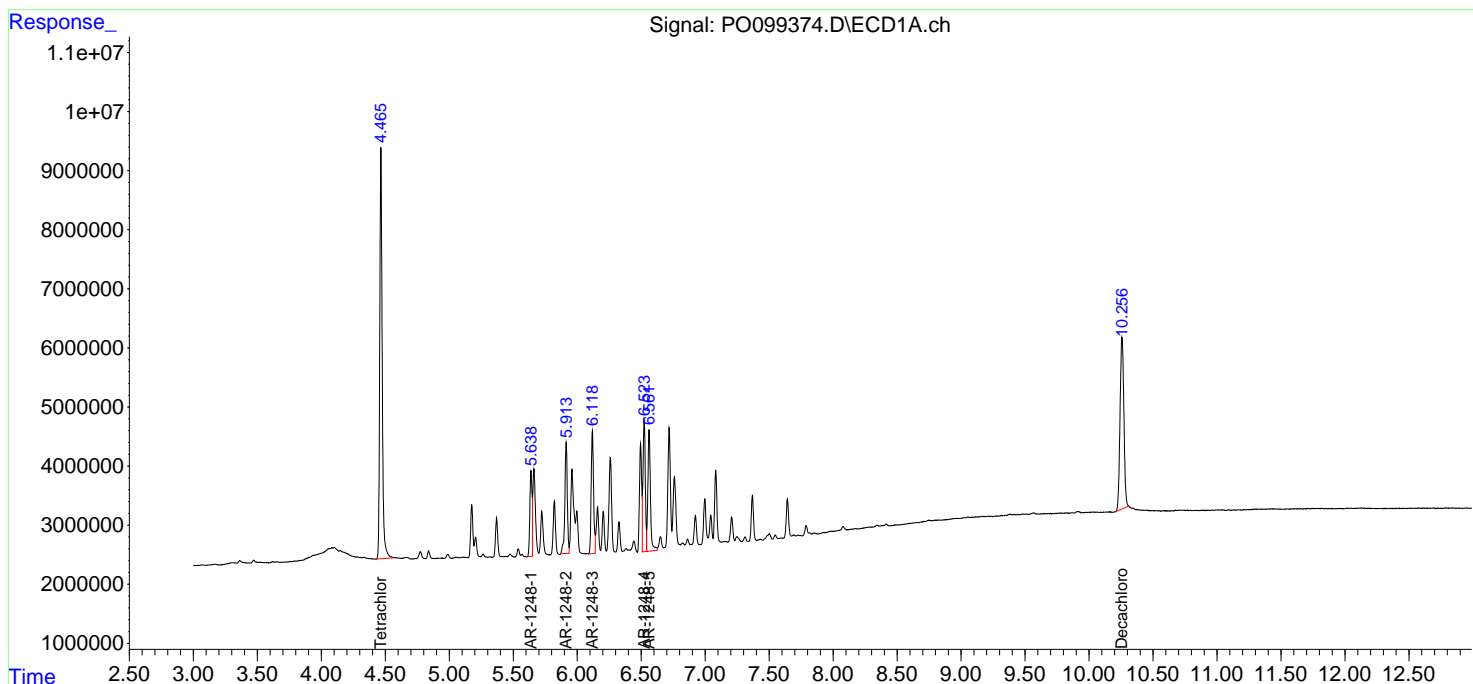
Instrument :
 ECD_O
 ClientSampleId :
 AR1248CCC500

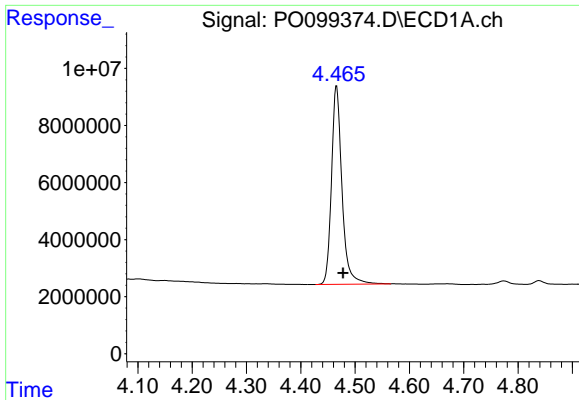
Manual Integrations
 APPROVED

Reviewed By :Yogesh Patel 11/06/2023
 Supervised By :mohammad ahmed 11/06/2023

Integration File signal 1: autoint1.e
 Integration File signal 2: autoint2.e
 Quant Time: Nov 04 02:41:24 2023
 Quant Method : Z:\pestpcbsrv\HPCHEM1\ECD_O\methods\PO102523.M
 Quant Title : GC EXTRACTABLES
 QLast Update : Wed Oct 25 06:04:36 2023
 Response via : Initial Calibration
 Integrator: ChemStation

Volume Inj. : 2 µl
 Signal #1 Phase : ZB-MR1 Signal #2 Phase: ZB-MR2
 Signal #1 Info : 30Mx0.32mmx 0.50µ Signal #2 Info : 30M x 0.32mm x 0.25µm

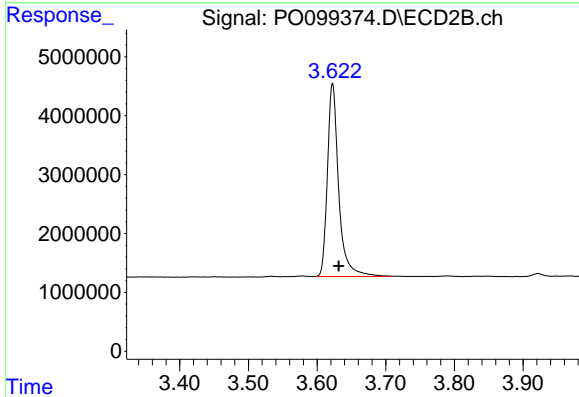




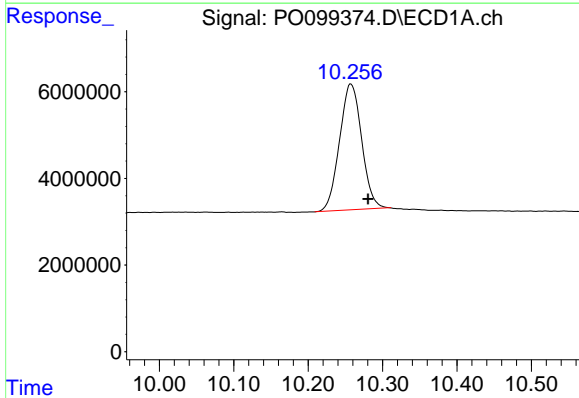
#1 Tetrachloro-m-xylene
 R.T.: 4.466 min
 Delta R.T.: -0.012 min
 Response: 93300951
 Conc: 47.22 ng/ml

Instrument :
 ECD_O
 ClientSampleId :
 AR1248CCC500

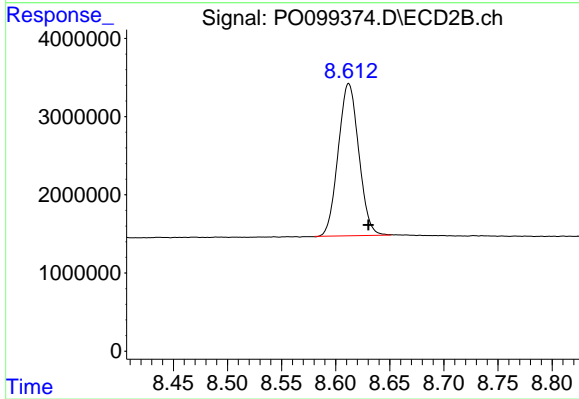
Manual Integrations
APPROVED
 Reviewed By :Yogesh Patel 11/06/2023
 Supervised By :mohammad ahmed 11/06/2023



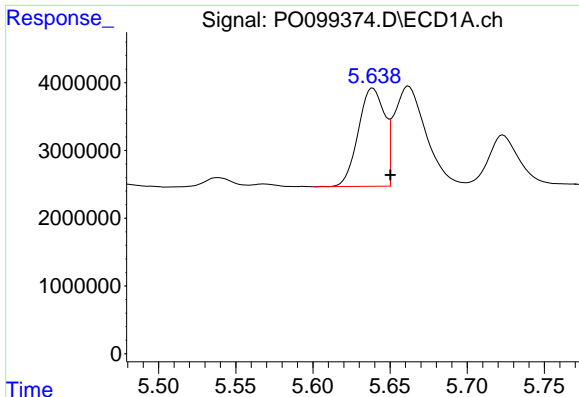
#1 Tetrachloro-m-xylene
 R.T.: 3.622 min
 Delta R.T.: -0.009 min
 Response: 37386033
 Conc: 51.95 ng/ml m



#2 Decachlorobiphenyl
 R.T.: 10.256 min
 Delta R.T.: -0.024 min
 Response: 60038140
 Conc: 53.00 ng/ml m



#2 Decachlorobiphenyl
 R.T.: 8.612 min
 Delta R.T.: -0.019 min
 Response: 25771668
 Conc: 48.03 ng/ml m



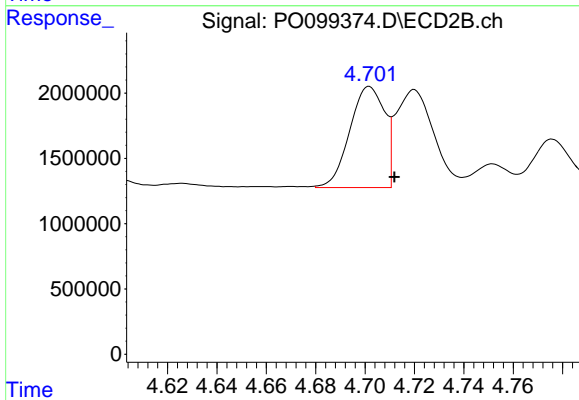
#21 AR-1248-1

R.T.: 5.639 min
 Delta R.T.: -0.011 min
 Response: 17189767
 Conc: 505.99 ng/ml

Instrument :
 ECD_O
 ClientSampleId :
 AR1248CCC500

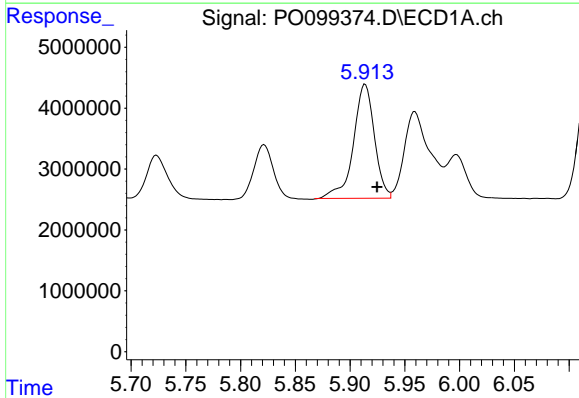
Manual Integrations
 APPROVED

Reviewed By :Yogesh Patel 11/06/2023
 Supervised By :mohammad ahmed 11/06/2023



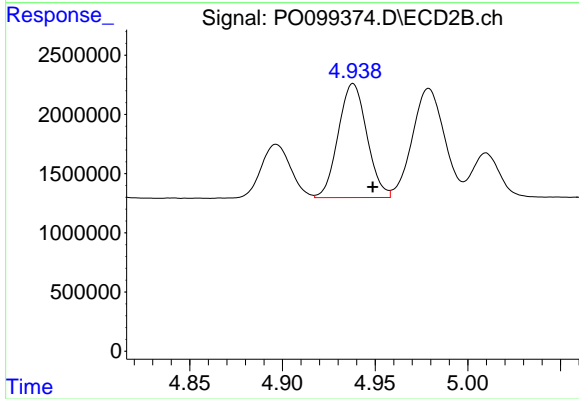
#21 AR-1248-1

R.T.: 4.701 min
 Delta R.T.: -0.011 min
 Response: 7618914
 Conc: 549.71 ng/ml m



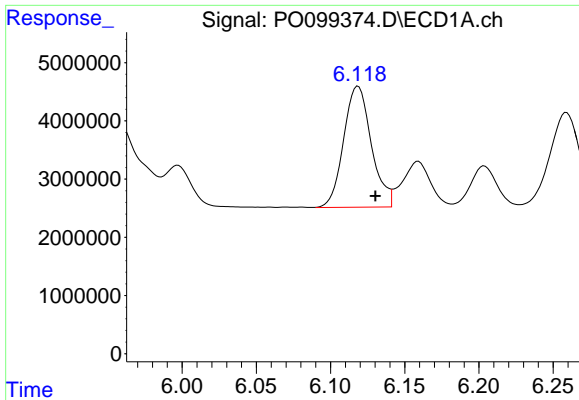
#22 AR-1248-2

R.T.: 5.913 min
 Delta R.T.: -0.012 min
 Response: 25017049
 Conc: 478.03 ng/ml m



#22 AR-1248-2

R.T.: 4.938 min
 Delta R.T.: -0.011 min
 Response: 10345999
 Conc: 520.85 ng/ml



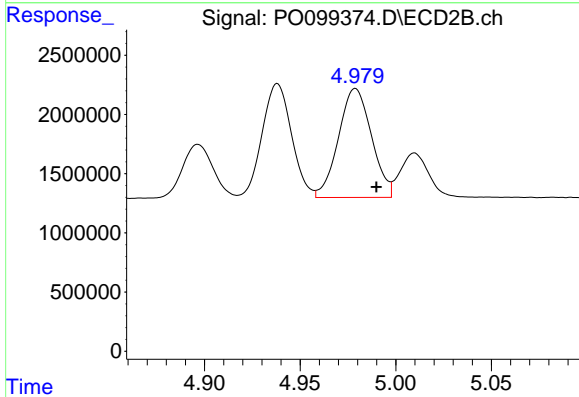
#23 AR-1248-3

R.T.: 6.118 min
 Delta R.T.: -0.012 min
 Response: 27333380
 Conc: 479.72 ng/ml

Instrument :
 ECD_O
 ClientSampleId :
 AR1248CCC500

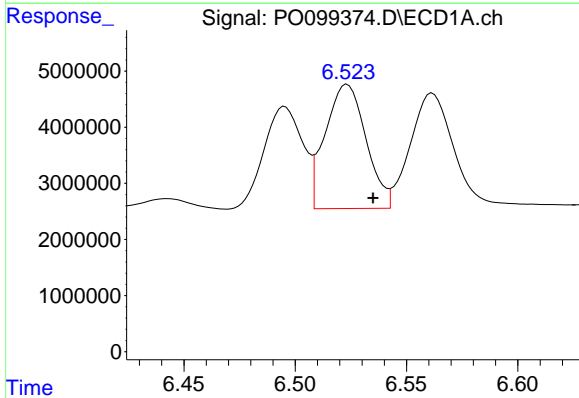
Manual Integrations
 APPROVED

Reviewed By :Yogesh Patel 11/06/2023
 Supervised By :mohammad ahmed 11/06/2023



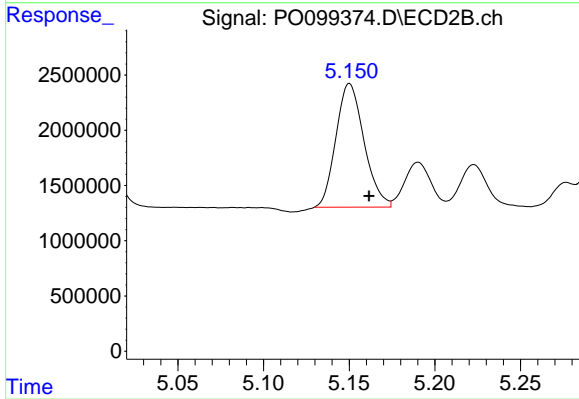
#23 AR-1248-3

R.T.: 4.979 min
 Delta R.T.: -0.011 min
 Response: 11078206
 Conc: 531.24 ng/ml



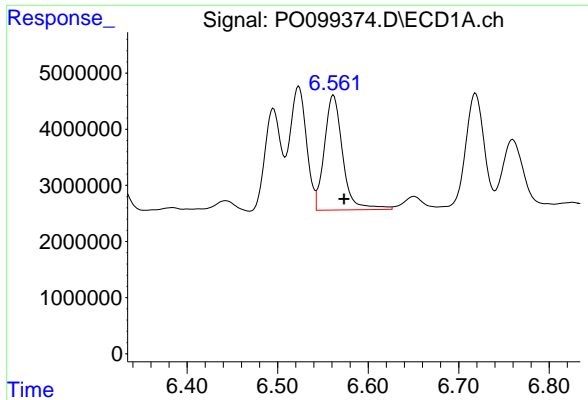
#24 AR-1248-4

R.T.: 6.523 min
 Delta R.T.: -0.012 min
 Response: 28238909
 Conc: 517.84 ng/ml



#24 AR-1248-4

R.T.: 5.150 min
 Delta R.T.: -0.011 min
 Response: 12769076
 Conc: 519.42 ng/ml



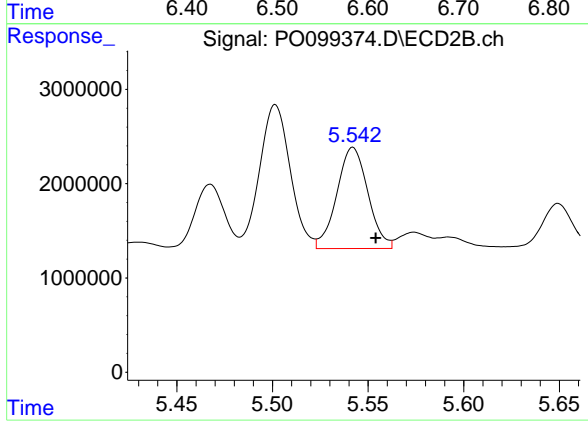
#25 AR-1248-5

R.T.: 6.562 min
Delta R.T.: -0.012 min
Response: 28808408
Conc: 507.14 ng/ml

Instrument :
ECD_O
ClientSampleId :
AR1248CCC500

Manual Integrations
APPROVED

Reviewed By :Yogesh Patel 11/06/2023
Supervised By :mohammad ahmed 11/06/2023



#25 AR-1248-5

R.T.: 5.542 min
Delta R.T.: -0.012 min
Response: 12156766
Conc: 559.74 ng/ml