

Data Path : Z:\pestpcbsrv\HPCHEM1\ECD\_0\Data\PO110420\  
 Data File : PO073061.D  
 Signal(s) : Signal #1: ECD1A.CH Signal #2: ECD2B.CH  
 Acq On : 04 Nov 2020 8:55  
 Operator : DD\AJ  
 Sample : HEXANE  
 Misc :  
 ALS Vial : 1 Sample Multiplier: 1

Instrument :  
 ECD\_0  
 ClientSampleId :  
 HEXANE

Integration File signal 1: autoint1.e  
 Integration File signal 2: autoint2.e  
 Quant Time: Nov 05 05:45:45 2020  
 Quant Method : Z:\pestpcbsrv\HPCHEM1\ECD\_0\methods\PO110420.M  
 Quant Title : GC EXTRACTABLES  
 QLast Update : Thu Nov 05 05:38:46 2020  
 Response via : Initial Calibration  
 Integrator: ChemStation 6890 Scale Mode: Small noise peaks clipped

Volume Inj. : 2 µl  
 Signal #1 Phase : ZB-MR1 Signal #2 Phase: ZB-MR2  
 Signal #1 Info : 30Mx0.32mmx 0.50µ Signal #2 Info : 30M x 0.32mm x 0.25µm

Compound	RT#1	RT#2	Resp#1	Resp#2	ng/ml	ng/ml
----------	------	------	--------	--------	-------	-------

System Monitoring Compounds

Target Compounds

3)	L1	AR-1016-1	6.279	0.000	168366	0	84.881	N.D.	#
4)	L1	AR-1016-2	6.279f	0.000	168366	0	61.415	N.D.	#
13)	L3	AR-1232-3	6.279	0.000	168366	0	133.836	N.D.	#
16)	L4	AR-1242-1	6.279	0.000	168366	0	96.842	N.D.	#
17)	L4	AR-1242-2	6.279	0.000	168366	0	70.294	N.D.	#
18)	L4	AR-1242-3	6.410f	0.000	210717	0	143.910	N.D.	#
20)	L4	AR-1242-5	0.000	6.165f	0	190566	N.D.	167.611	#
21)	L5	AR-1248-1	6.279	0.000	168366	0	125.053	N.D.	#
24)	L5	AR-1248-4	7.184f	0.000	335350	0	138.706	N.D.	#
25)	L5	AR-1248-5	0.000	6.165f	0	190566	N.D.	119.680	#
26)	L6	AR-1254-1	7.184	6.165f	335350	190566	143.328	79.316	#
27)	L6	AR-1254-2	7.431f	0.000	56339	0	15.989	N.D.	#
28)	L6	AR-1254-3	7.811f	0.000	332309	0	92.403	N.D.	#
29)	L6	AR-1254-4	8.097	0.000	76535	0	25.433	N.D.	#
33)	L7	AR-1260-3	8.586	0.000	7468	0	3.628	N.D.	#
34)	L7	AR-1260-4	8.815	0.000	42055	0	18.423	N.D.	#
35)	L7	AR-1260-5	9.162	0.000	11741	0	2.662	N.D.	#
36)	L8	AR-1262-1	8.586	0.000	7468	0	2.191	N.D.	#
37)	L8	AR-1262-2	9.162	0.000	11741	0	2.022	N.D.	#

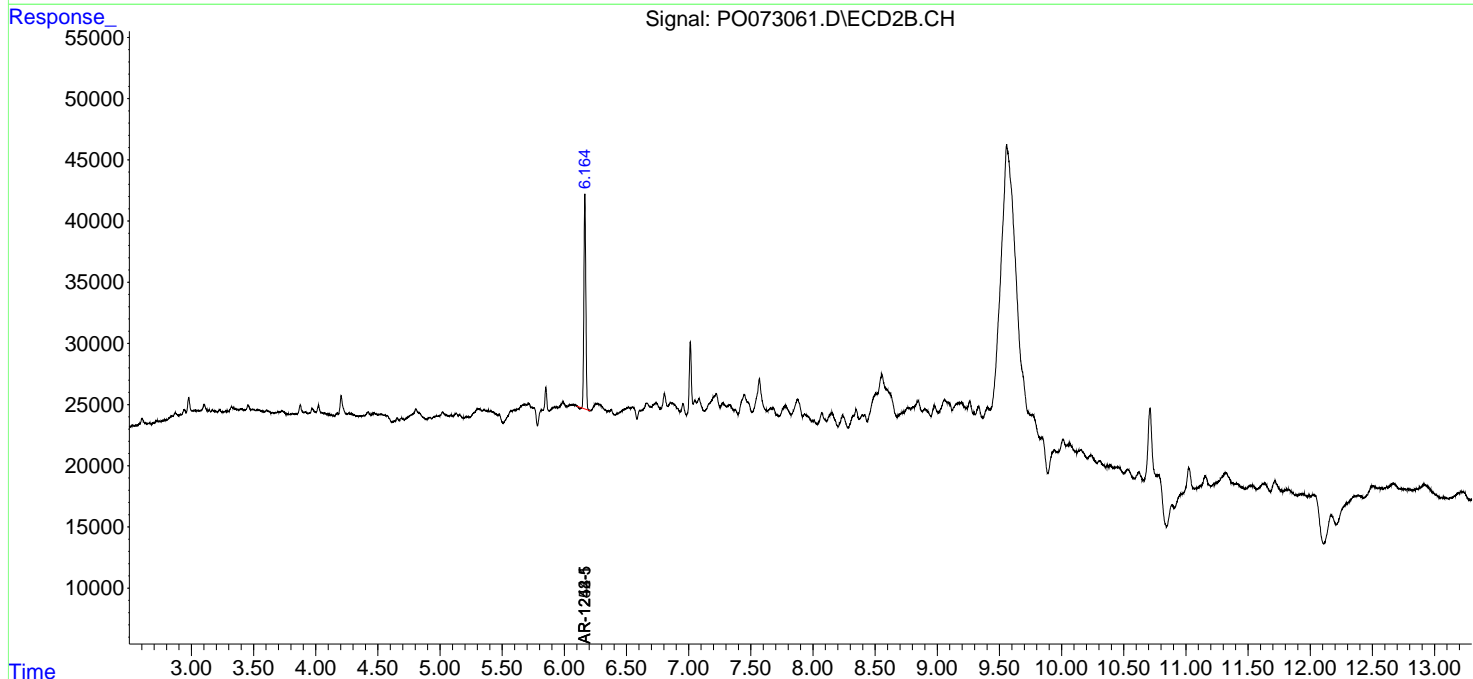
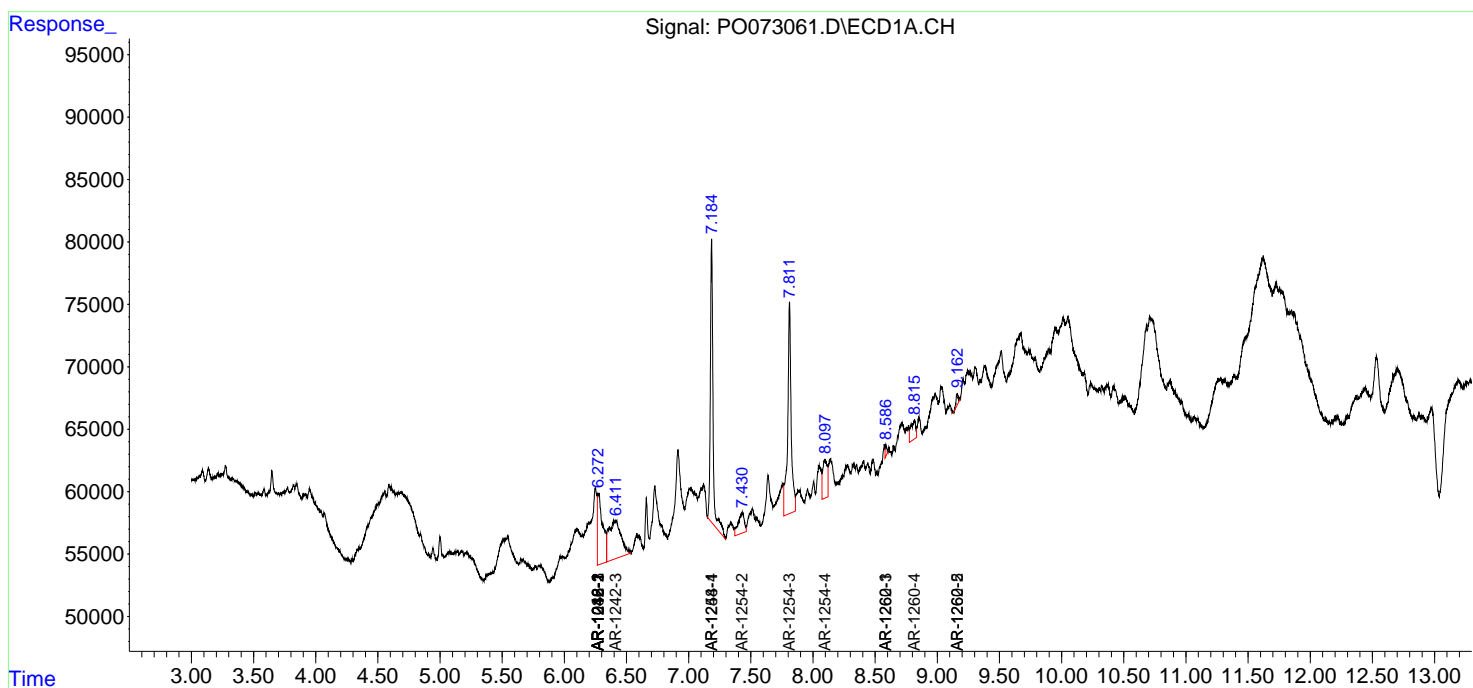
(f)=RT Delta > 1/2 Window (#)=Amounts differ by > 25% (m)=manual int.

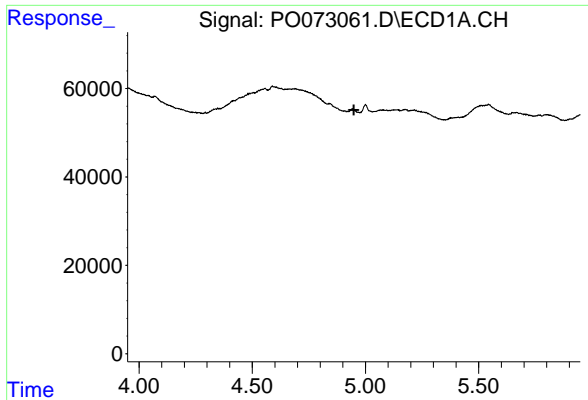
Data Path : Z:\pestpcbsrv\HPCHEM1\ECD\_O\Data\PO110420\  
 Data File : PO073061.D  
 Signal(s) : Signal #1: ECD1A.CH Signal #2: ECD2B.CH  
 Acq On : 04 Nov 2020 8:55  
 Operator : DD\AJ  
 Sample : HEXANE  
 Misc :  
 ALS Vial : 1 Sample Multiplier: 1

Instrument :  
 ECD\_O  
 ClientSampled :  
 HEXANE

Integration File signal 1: autoint1.e  
 Integration File signal 2: autoint2.e  
 Quant Time: Nov 05 05:45:45 2020  
 Quant Method : Z:\pestpcbsrv\HPCHEM1\ECD\_O\methods\PO110420.M  
 Quant Title : GC EXTRACTABLES  
 QLast Update : Thu Nov 05 05:38:46 2020  
 Response via : Initial Calibration  
 Integrator: ChemStation 6890 Scale Mode: Small noise peaks clipped

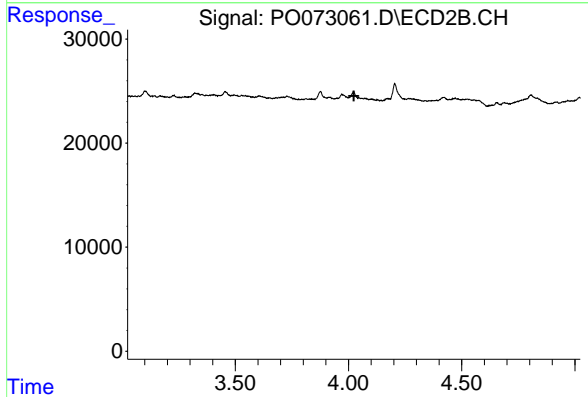
Volume Inj. : 2 µl  
 Signal #1 Phase : ZB-MR1 Signal #2 Phase: ZB-MR2  
 Signal #1 Info : 30Mx0.32mmx 0.50µm Signal #2 Info : 30M x 0.32mm x 0.25µm



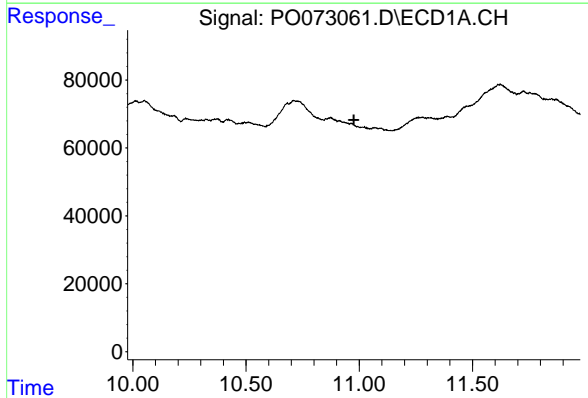


#1 Tetrachloro-m-xylene  
 R.T.: 0.000 min  
 Exp R.T. : 4.949 min  
 Response: 0  
 Conc: N.D.

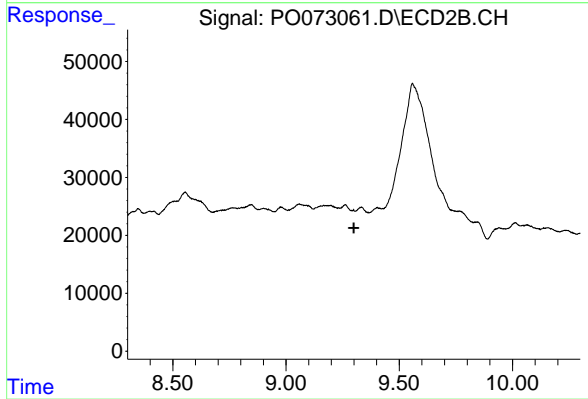
Instrument :  
 ECD\_O  
 ClientSampleId :  
 HEXANE



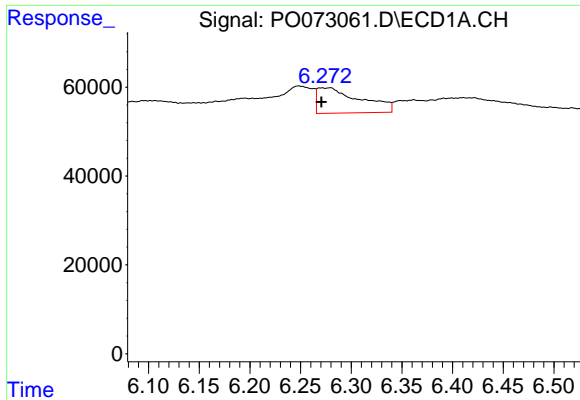
#1 Tetrachloro-m-xylene  
 R.T.: 0.000 min  
 Exp R.T. : 4.024 min  
 Response: 0  
 Conc: N.D.



#2 Decachlorobiphenyl  
 R.T.: 0.000 min  
 Exp R.T. : 10.976 min  
 Response: 0  
 Conc: N.D.



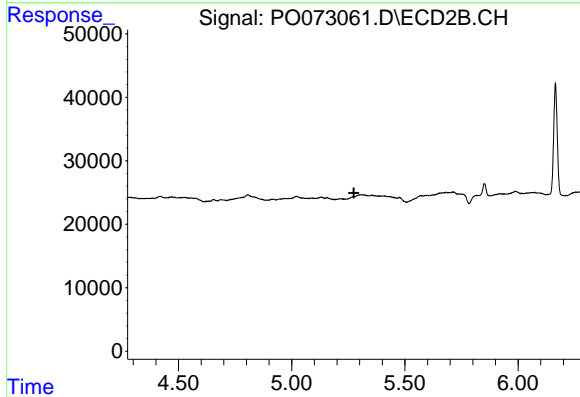
#2 Decachlorobiphenyl  
 R.T.: 0.000 min  
 Exp R.T. : 9.300 min  
 Response: 0  
 Conc: N.D.



#3 AR-1016-1

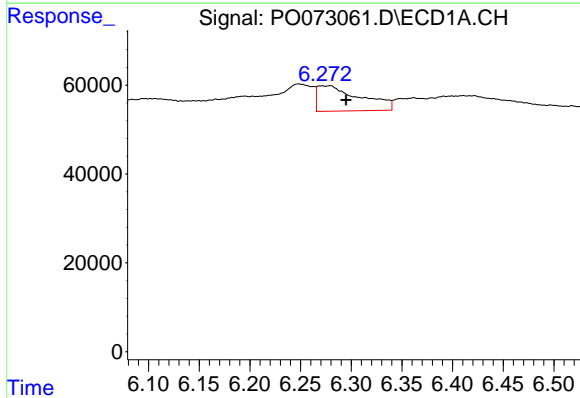
R.T.: 6.279 min  
 Delta R.T.: 0.008 min  
 Response: 168366  
 Conc: 84.88 ng/ml

Instrument :  
 ECD\_O  
 ClientSampleId :  
 HEXANE



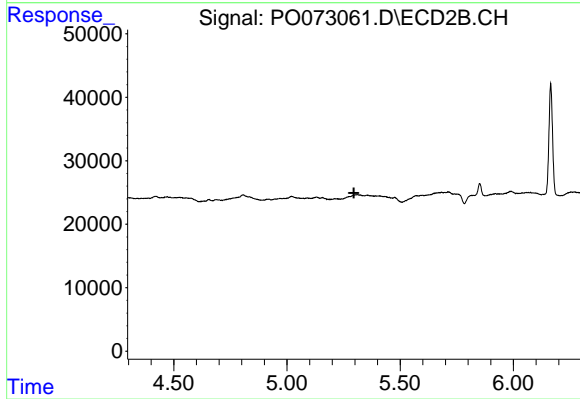
#3 AR-1016-1

R.T.: 0.000 min  
 Exp R.T. : 5.275 min  
 Response: 0  
 Conc: N.D.



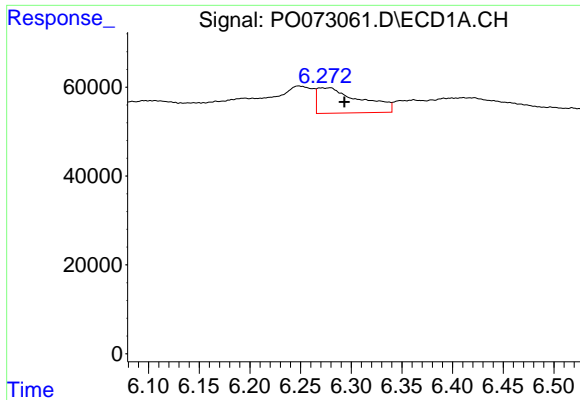
#4 AR-1016-2

R.T.: 6.279 min  
 Delta R.T.: -0.016 min  
 Response: 168366  
 Conc: 61.41 ng/ml



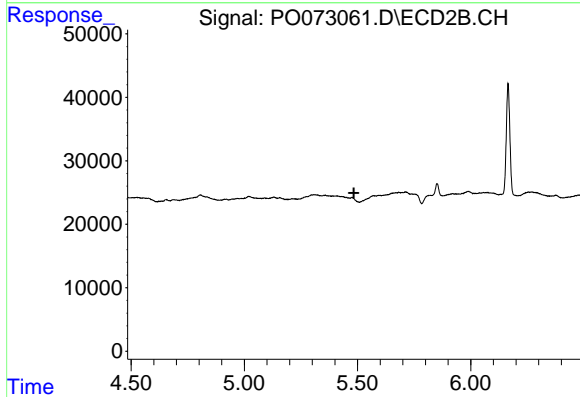
#4 AR-1016-2

R.T.: 0.000 min  
 Exp R.T. : 5.295 min  
 Response: 0  
 Conc: N.D.

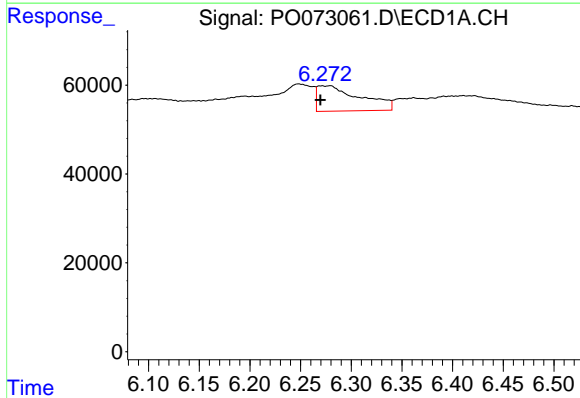


#13 AR-1232-3  
 R.T.: 6.279 min  
 Delta R.T.: -0.014 min  
 Response: 168366  
 Conc: 133.84 ng/ml

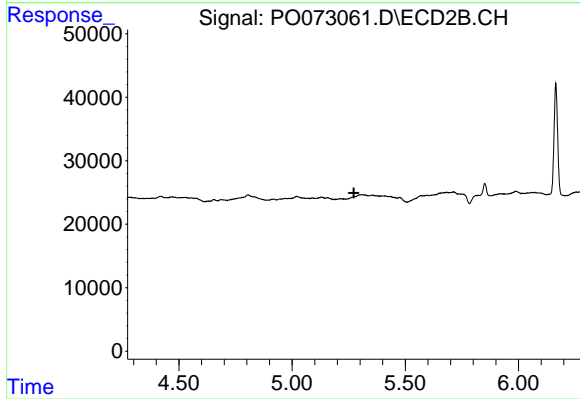
Instrument :  
 ECD\_O  
 ClientSampleId :  
 HEXANE



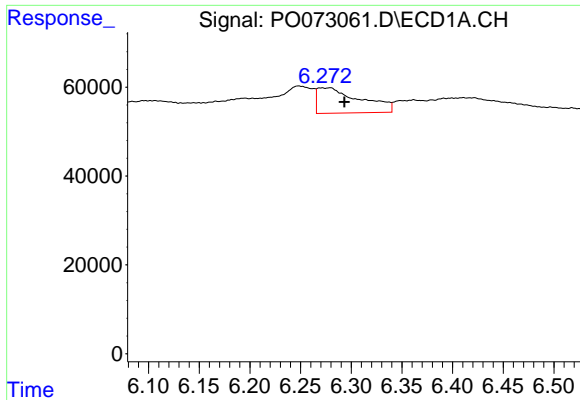
#13 AR-1232-3  
 R.T.: 0.000 min  
 Exp R.T. : 5.483 min  
 Response: 0  
 Conc: N.D.



#16 AR-1242-1  
 R.T.: 6.279 min  
 Delta R.T.: 0.010 min  
 Response: 168366  
 Conc: 96.84 ng/ml

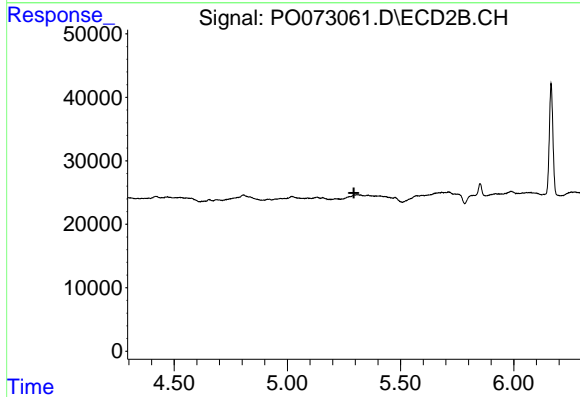


#16 AR-1242-1  
 R.T.: 0.000 min  
 Exp R.T. : 5.273 min  
 Response: 0  
 Conc: N.D.

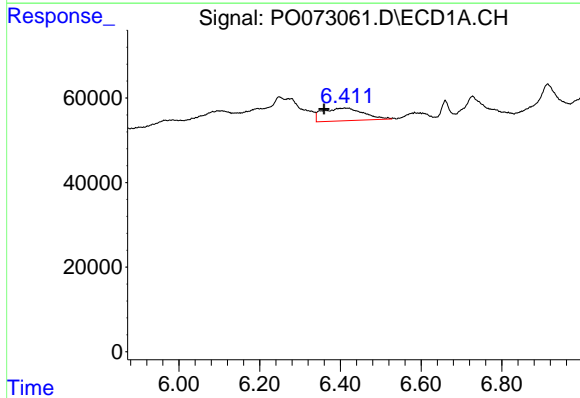


#17 AR-1242-2  
 R.T.: 6.279 min  
 Delta R.T.: -0.014 min  
 Response: 168366  
 Conc: 70.29 ng/ml

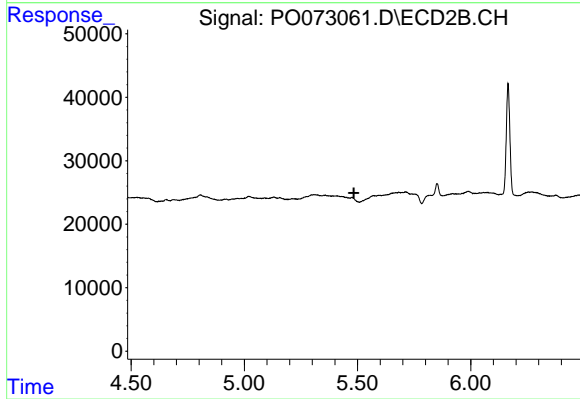
Instrument :  
 ECD\_O  
 ClientSampled :  
 HEXANE



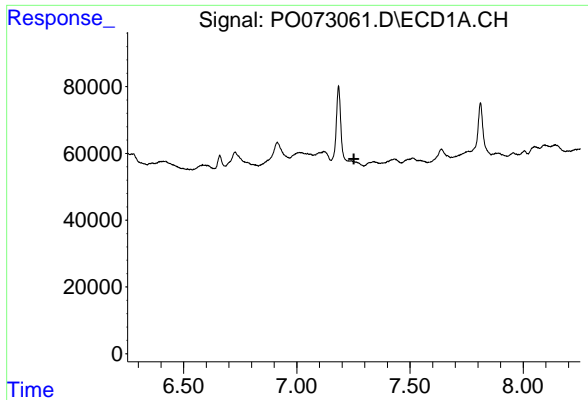
#17 AR-1242-2  
 R.T.: 0.000 min  
 Exp R.T. : 5.294 min  
 Response: 0  
 Conc: N.D.



#18 AR-1242-3  
 R.T.: 6.410 min  
 Delta R.T.: 0.050 min  
 Response: 210717  
 Conc: 143.91 ng/ml



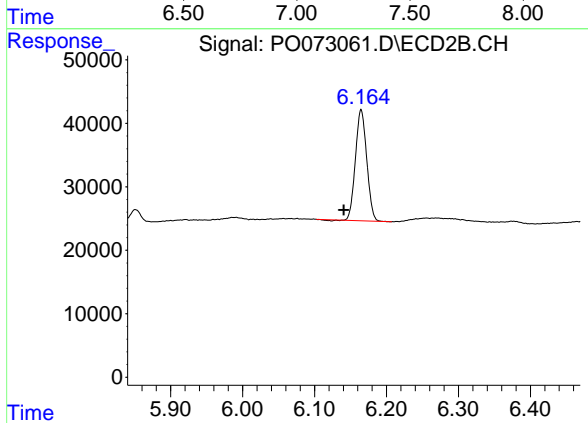
#18 AR-1242-3  
 R.T.: 0.000 min  
 Exp R.T. : 5.484 min  
 Response: 0  
 Conc: N.D.



#20 AR-1242-5

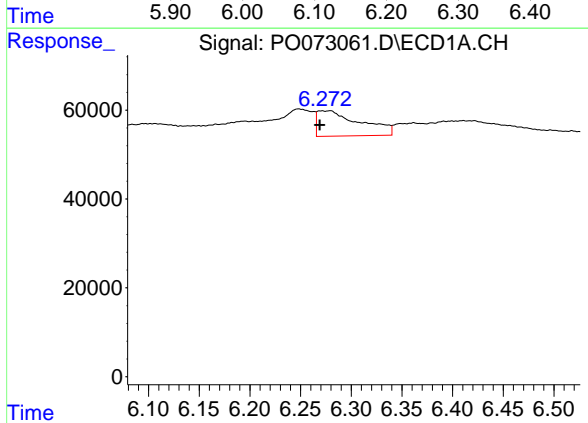
R.T.: 0.000 min  
 Exp R.T.: 7.252 min  
 Response: 0  
 Conc: N.D.

Instrument :  
 ECD\_O  
 ClientSampleId :  
 HEXANE



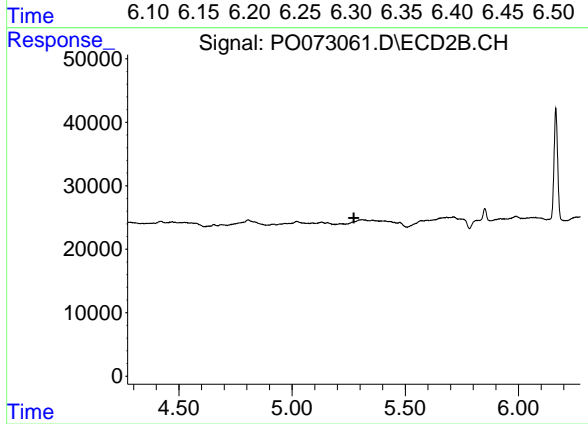
#20 AR-1242-5

R.T.: 6.165 min  
 Delta R.T.: 0.024 min  
 Response: 190566  
 Conc: 167.61 ng/ml



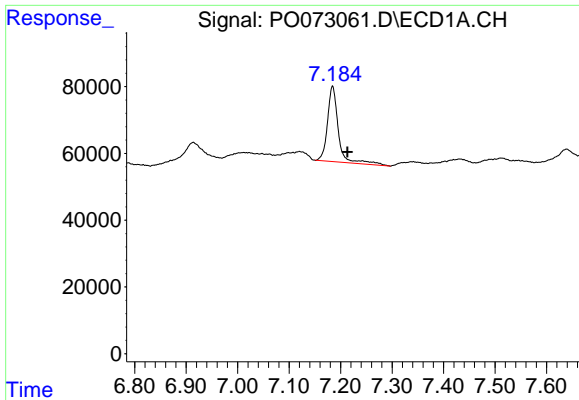
#21 AR-1248-1

R.T.: 6.279 min  
 Delta R.T.: 0.010 min  
 Response: 168366  
 Conc: 125.05 ng/ml



#21 AR-1248-1

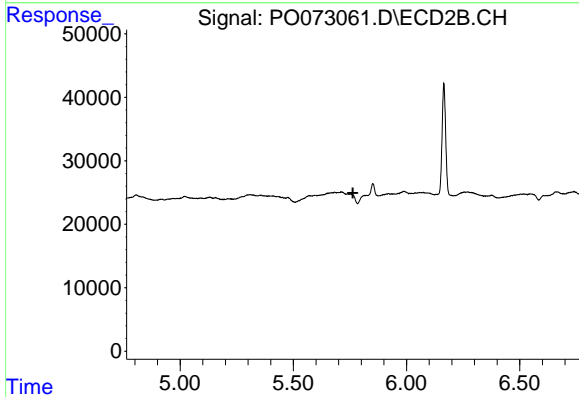
R.T.: 0.000 min  
 Exp R.T.: 5.273 min  
 Response: 0  
 Conc: N.D.



#24 AR-1248-4

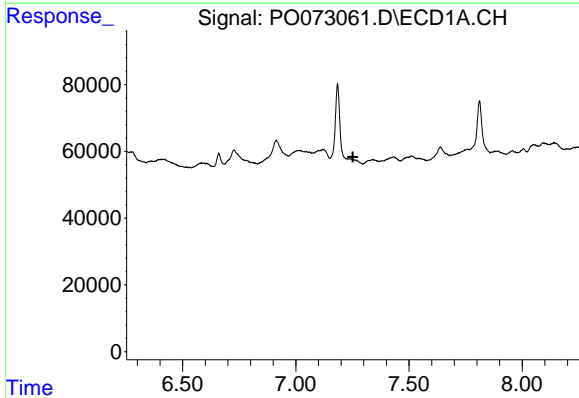
R.T.: 7.184 min  
 Delta R.T.: -0.029 min  
 Response: 335350  
 Conc: 138.71 ng/ml

Instrument :  
 ECD\_O  
 ClientSampled :  
 HEXANE



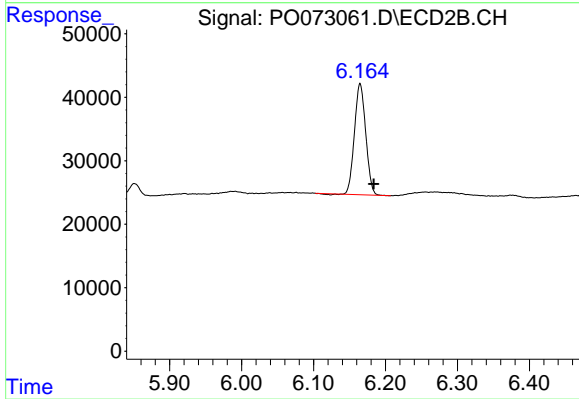
#24 AR-1248-4

R.T.: 0.000 min  
 Exp R.T. : 5.763 min  
 Response: 0  
 Conc: N.D.



#25 AR-1248-5

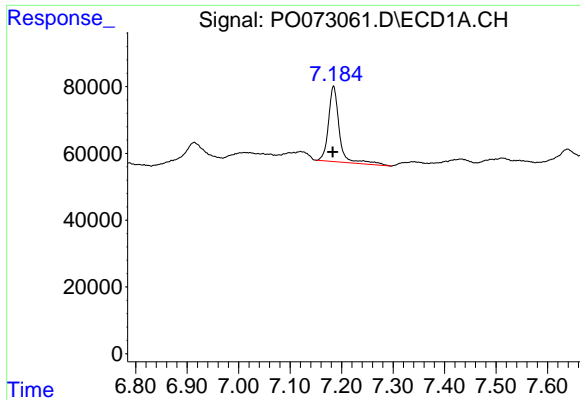
R.T.: 0.000 min  
 Exp R.T. : 7.253 min  
 Response: 0  
 Conc: N.D.



#25 AR-1248-5

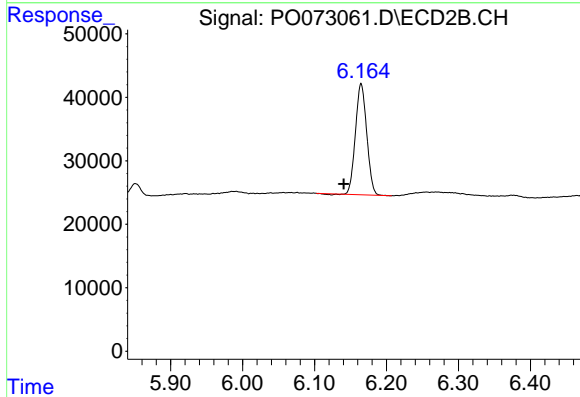
R.T.: 6.165 min  
 Delta R.T.: -0.019 min  
 Response: 190566  
 Conc: 119.68 ng/ml



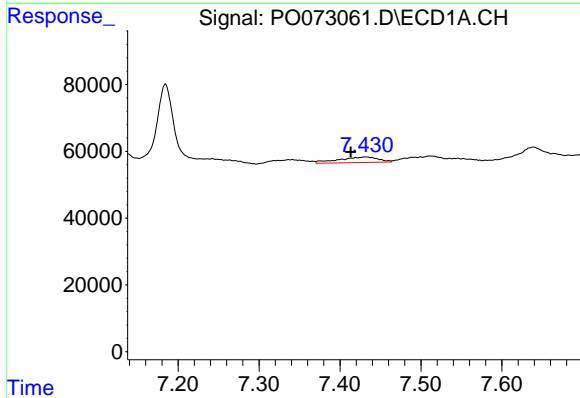


#26 AR-1254-1  
 R.T.: 7.184 min  
 Delta R.T.: 0.002 min  
 Response: 335350  
 Conc: 143.33 ng/ml

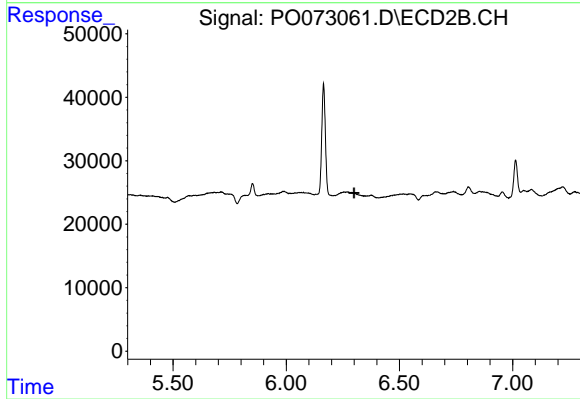
Instrument :  
 ECD\_O  
 ClientSampleId :  
 HEXANE



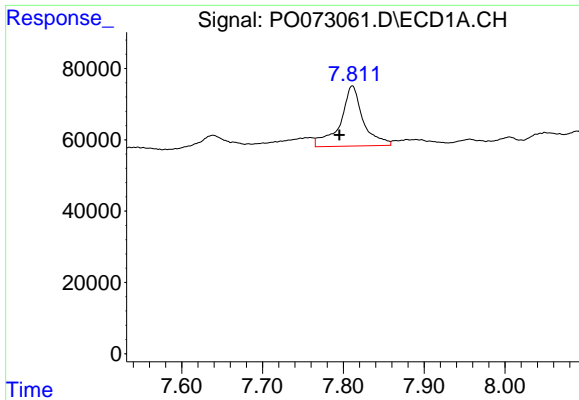
#26 AR-1254-1  
 R.T.: 6.165 min  
 Delta R.T.: 0.024 min  
 Response: 190566  
 Conc: 79.32 ng/ml



#27 AR-1254-2  
 R.T.: 7.431 min  
 Delta R.T.: 0.018 min  
 Response: 56339  
 Conc: 15.99 ng/ml



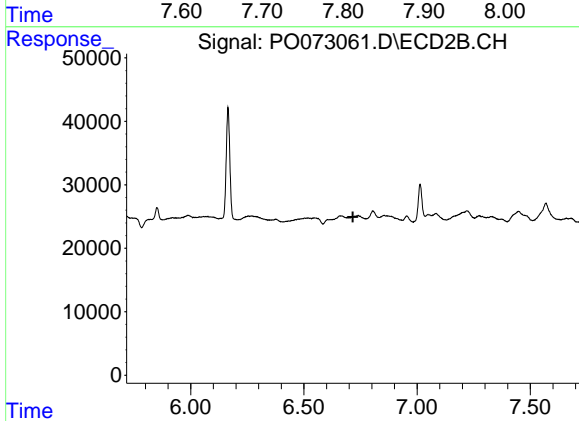
#27 AR-1254-2  
 R.T.: 0.000 min  
 Exp R.T. : 6.299 min  
 Response: 0  
 Conc: N.D.



#28 AR-1254-3

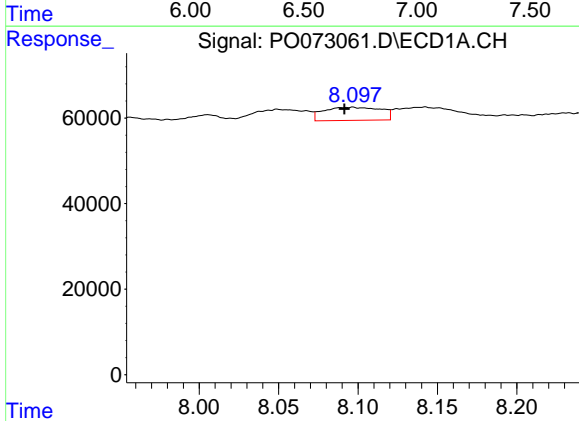
R.T.: 7.811 min  
 Delta R.T.: 0.016 min  
 Response: 332309  
 Conc: 92.40 ng/ml

Instrument :  
 ECD\_O  
 ClientSampleId :  
 HEXANE



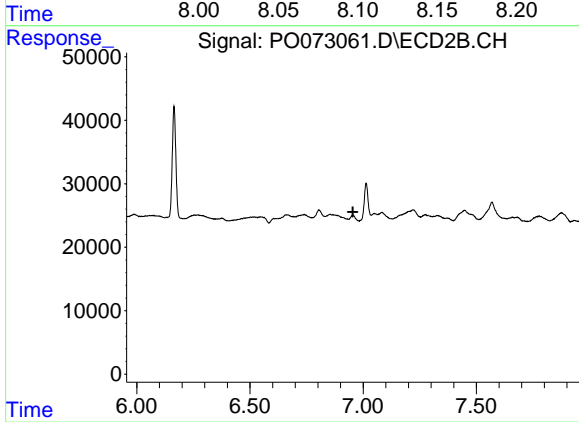
#28 AR-1254-3

R.T.: 0.000 min  
 Exp R.T. : 6.717 min  
 Response: 0  
 Conc: N.D.



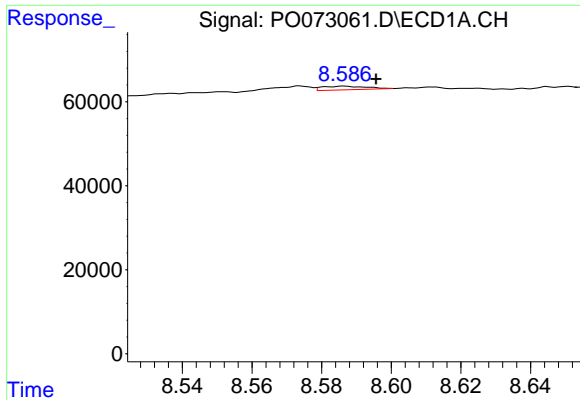
#29 AR-1254-4

R.T.: 8.097 min  
 Delta R.T.: 0.005 min  
 Response: 76535  
 Conc: 25.43 ng/ml



#29 AR-1254-4

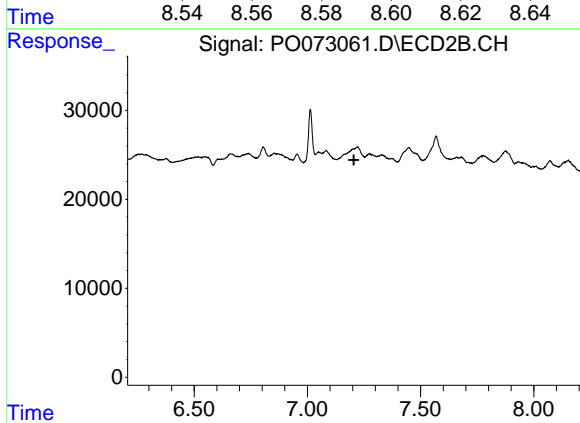
R.T.: 0.000 min  
 Exp R.T. : 6.954 min  
 Response: 0  
 Conc: N.D.



#33 AR-1260-3

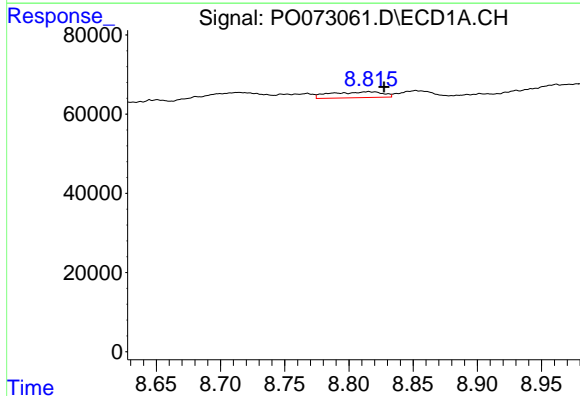
R.T.: 8.586 min  
 Delta R.T.: -0.009 min  
 Response: 7468  
 Conc: 3.63 ng/ml

Instrument :  
 ECD\_O  
 ClientSampled :  
 HEXANE



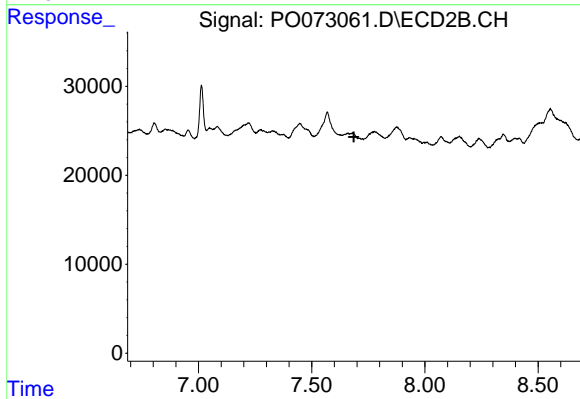
#33 AR-1260-3

R.T.: 0.000 min  
 Exp R.T. : 7.206 min  
 Response: 0  
 Conc: N.D.



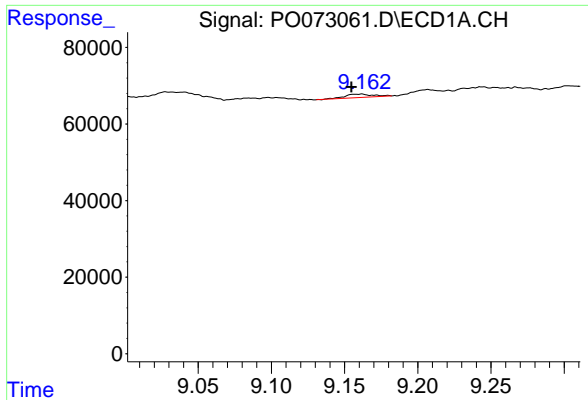
#34 AR-1260-4

R.T.: 8.815 min  
 Delta R.T.: -0.012 min  
 Response: 42055  
 Conc: 18.42 ng/ml



#34 AR-1260-4

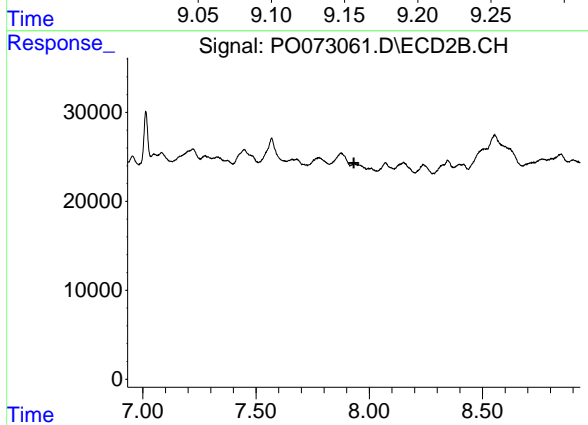
R.T.: 0.000 min  
 Exp R.T. : 7.687 min  
 Response: 0  
 Conc: N.D.



#35 AR-1260-5

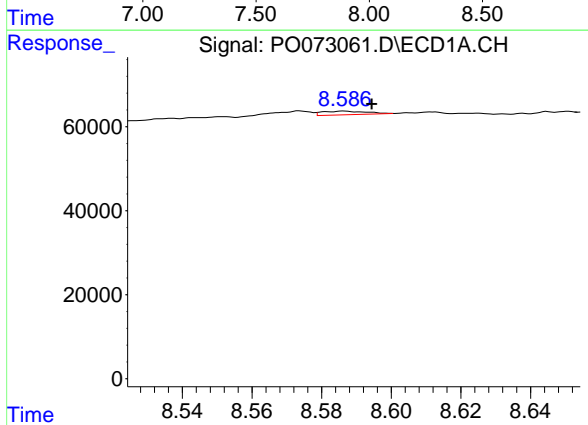
R.T.: 9.162 min  
 Delta R.T.: 0.007 min  
 Response: 11741  
 Conc: 2.66 ng/ml

Instrument :  
 ECD\_O  
 ClientSampleId :  
 HEXANE



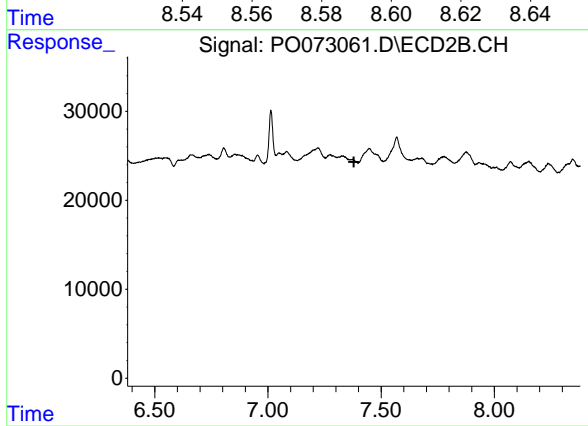
#35 AR-1260-5

R.T.: 0.000 min  
 Exp R.T. : 7.932 min  
 Response: 0  
 Conc: N.D.



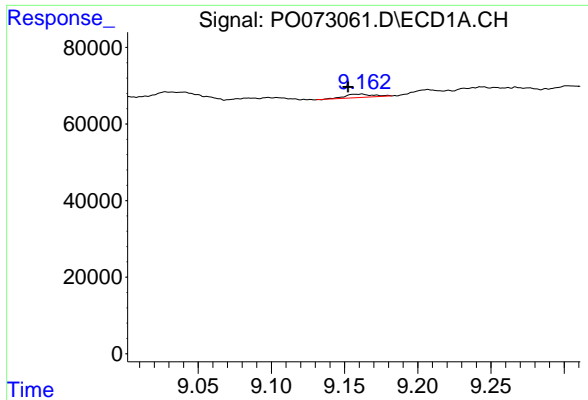
#36 AR-1262-1

R.T.: 8.586 min  
 Delta R.T.: -0.008 min  
 Response: 7468  
 Conc: 2.19 ng/ml



#36 AR-1262-1

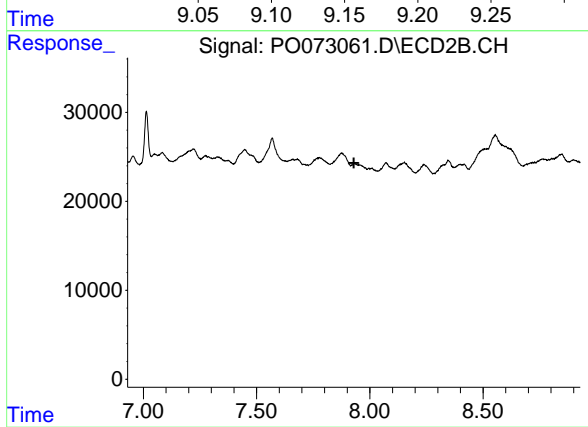
R.T.: 0.000 min  
 Exp R.T. : 7.380 min  
 Response: 0  
 Conc: N.D.



#37 AR-1262-2

R.T.: 9.162 min  
Delta R.T.: 0.009 min  
Response: 11741  
Conc: 2.02 ng/ml

Instrument :  
ECD\_O  
ClientSampleId :  
HEXANE



#37 AR-1262-2

R.T.: 0.000 min  
Exp R.T. : 7.929 min  
Response: 0  
Conc: N.D.