

Data Path : Z:\pestpcbsrv\HPCHEM1\ECD_0\Data\PO110420\
 Data File : PO073062.D
 Signal(s) : Signal #1: ECD1A.CH Signal #2: ECD2B.CH
 Acq On : 04 Nov 2020 9:12
 Operator : DD\AJ
 Sample : AR1660CCC500
 Misc :
 ALS Vial : 3 Sample Multiplier: 1

Instrument :
 ECD_O
 ClientSampled :

Integration File signal 1: autoint1.e
 Integration File signal 2: autoint2.e
 Quant Time: Nov 05 05:46:13 2020
 Quant Method : Z:\pestpcbsrv\HPCHEM1\ECD_0\methods\PO110420.M
 Quant Title : GC EXTRACTABLES
 QLast Update : Thu Nov 05 05:38:46 2020
 Response via : Initial Calibration
 Integrator: ChemStation 6890 Scale Mode: Small noise peaks clipped

Volume Inj. : 2 µl
 Signal #1 Phase : ZB-MR1 Signal #2 Phase: ZB-MR2
 Signal #1 Info : 30Mx0.32mmx 0.50µ Signal #2 Info : 30M x 0.32mm x 0.25µm

Compound	RT#1	RT#2	Resp#1	Resp#2	ng/ml	ng/ml
System Monitoring Compounds						
1) SA Tetrachlo...	4.948	4.023	2162928	1700514	40.811	47.588
2) SA Decachlor...	10.974	9.300	1772105	1471725	42.822	44.114
Target Compounds						
3) L1 AR-1016-1	6.270	5.274	826637	653369	416.747	443.658
4) L1 AR-1016-2	6.294	5.295	1109078	882220	404.557	443.435
5) L1 AR-1016-3	6.360	5.484	661463	413508	396.893	434.503
6) L1 AR-1016-4	6.468	5.537	519658	363510	385.517	431.616
7) L1 AR-1016-5	6.784	5.764	445907	461632	393.073	428.372
8) L2 AR-1221-1	5.192	4.277	103003	79806	149.544	168.383
9) L2 AR-1221-2	5.297	4.377	140447	86084	276.054	240.390
10) L2 AR-1221-3	5.384	4.465	404558	330141	258.623	300.871
11) L3 AR-1232-1	5.384	4.465	404558	330141	323.098	383.538
12) L3 AR-1232-2	5.975	5.295	562151	882220	908.520	998.823
13) L3 AR-1232-3	6.294	5.484	1109078	413508	881.616	969.015
14) L3 AR-1232-4	6.468	5.581	519658	456077	851.797	1083.164 #
15) L3 AR-1232-5	6.566	5.764	441634	461632	1055.180	1031.206
16) L4 AR-1242-1	6.270	5.274	826637	653369	475.470	522.460
17) L4 AR-1242-2	6.294	5.295	1109078	882220	463.046	529.542
18) L4 AR-1242-3	6.360	5.484	661463	413508	451.750	496.065
19) L4 AR-1242-4	6.468	5.581	519658	456077	431.259	520.328
20) L4 AR-1242-5	7.253	6.141	76550	391451	58.485	344.299 #
21) L5 AR-1248-1	6.270	5.274	826637	653369	613.982	696.905
22) L5 AR-1248-2	6.566	5.537	441634	363510	254.573	280.660
23) L5 AR-1248-3	6.784	5.581	445907	456077	237.837	337.555 #
24) L5 AR-1248-4	7.213	5.764	110804	461632	45.830	291.084 #
25) L5 AR-1248-5	7.253	6.183	76550	59868	33.348	37.598
26) L6 AR-1254-1	7.183	6.141	426859	391451	182.439	162.926
27) L6 AR-1254-2	7.413	6.301	399235	333811	113.304	155.969 #
28) L6 AR-1254-3	7.797	6.696f	311995	125613	86.755	37.338 #
29) L6 AR-1254-4	8.091	6.956	180786	92392	60.076	41.602 #
30) L6 AR-1254-5	8.520	7.382	1204964	1157343	416.258	381.260
31) L7 AR-1260-1	7.963	6.855	845921	848021	388.352	422.099
32) L7 AR-1260-2	8.229	7.051	1103646	1084962	407.377	437.180
33) L7 AR-1260-3	8.595	7.205	846242	998470	411.119	442.365
34) L7 AR-1260-4	8.826	7.686	1135190	810487	497.303	438.025
35) L7 AR-1260-5	9.154	7.932	1888849	1886937	428.227	440.654
36) L8 AR-1262-1	8.595	7.382	846242	1157343	248.324	743.172 #
37) L8 AR-1262-2	9.154	7.932	1888849	1886937	325.371	372.961
38) L8 AR-1262-3	9.486f	8.218	1392229	434054	334.714	213.816 #
39) L8 AR-1262-4	9.541f	8.279	1085108	1349830	337.435	367.626
40) L8 AR-1262-5	10.226	8.774	699604	541981	332.626	309.865
41) L9 AR-1268-1	9.486f	8.218	1392229	434054	196.457	76.342 #

Data Path : Z:\pestpcbsrv\HPCHEM1\ECD_0\Data\PO110420\
 Data File : PO073062.D
 Signal(s) : Signal #1: ECD1A.CH Signal #2: ECD2B.CH
 Acq On : 04 Nov 2020 9:12
 Operator : DD\AJ
 Sample : AR1660CCC500
 Misc :
 ALS Vial : 3 Sample Multiplier: 1

Instrument :
 ECD_0
 ClientSampleId :

Integration File signal 1: autoint1.e
 Integration File signal 2: autoint2.e
 Quant Time: Nov 05 05:46:13 2020
 Quant Method : Z:\pestpcbsrv\HPCHEM1\ECD_0\methods\PO110420.M
 Quant Title : GC EXTRACTABLES
 QLast Update : Thu Nov 05 05:38:46 2020
 Response via : Initial Calibration
 Integrator: ChemStation 6890 Scale Mode: Small noise peaks clipped

Volume Inj. : 2 µl
 Signal #1 Phase : ZB-MR1 Signal #2 Phase: ZB-MR2
 Signal #1 Info : 30Mx0.32mmx 0.50µ Signal #2 Info : 30M x 0.32mm x 0.25µm

	Compound	RT#1	RT#2	Resp#1	Resp#2	ng/ml	ng/ml
42)	L9 AR-1268-2	9.541f	8.279	1085108	1349830	167.487	266.403 #
43)	L9 AR-1268-3	9.791	8.490	615303	41558	110.159	9.432 #
44)	L9 AR-1268-4	10.226	8.774	699604	541981	301.679	281.464
45)	L9 AR-1268-5	10.638	9.054	184468	171239	11.405	13.155

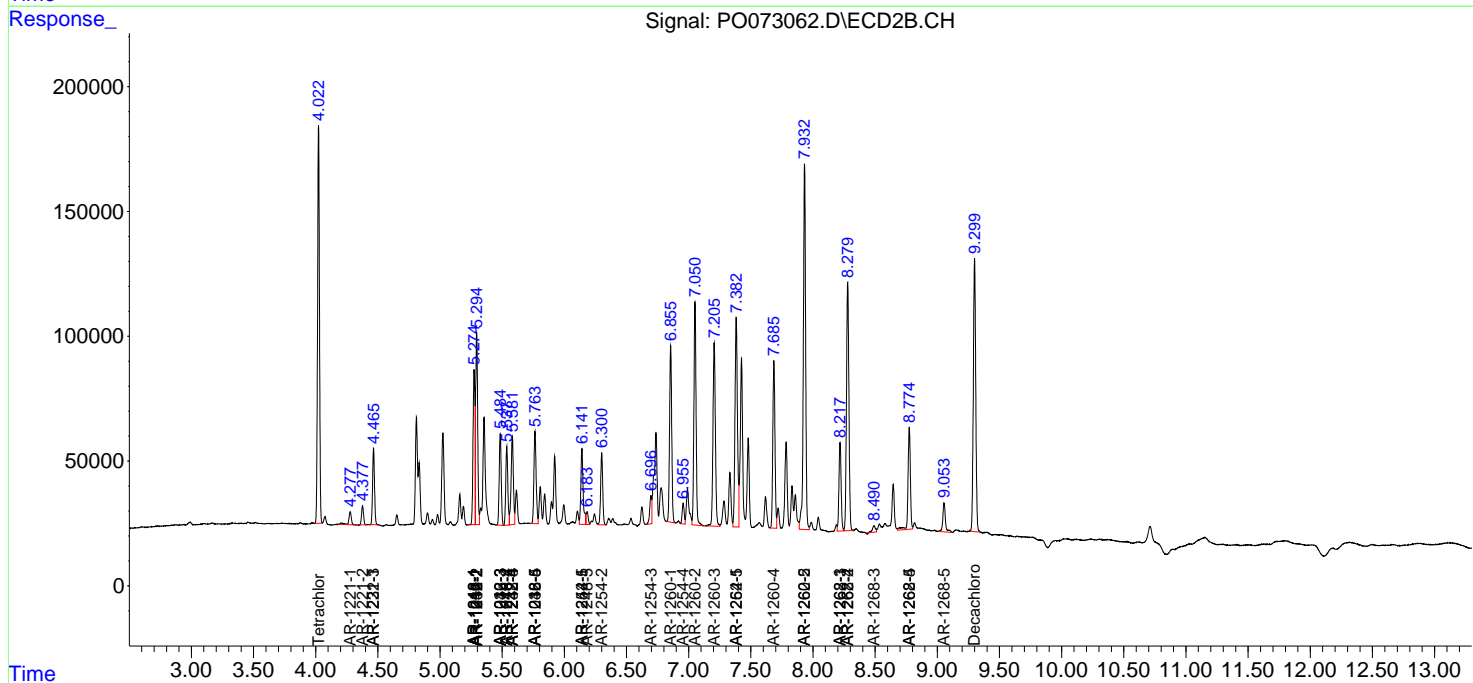
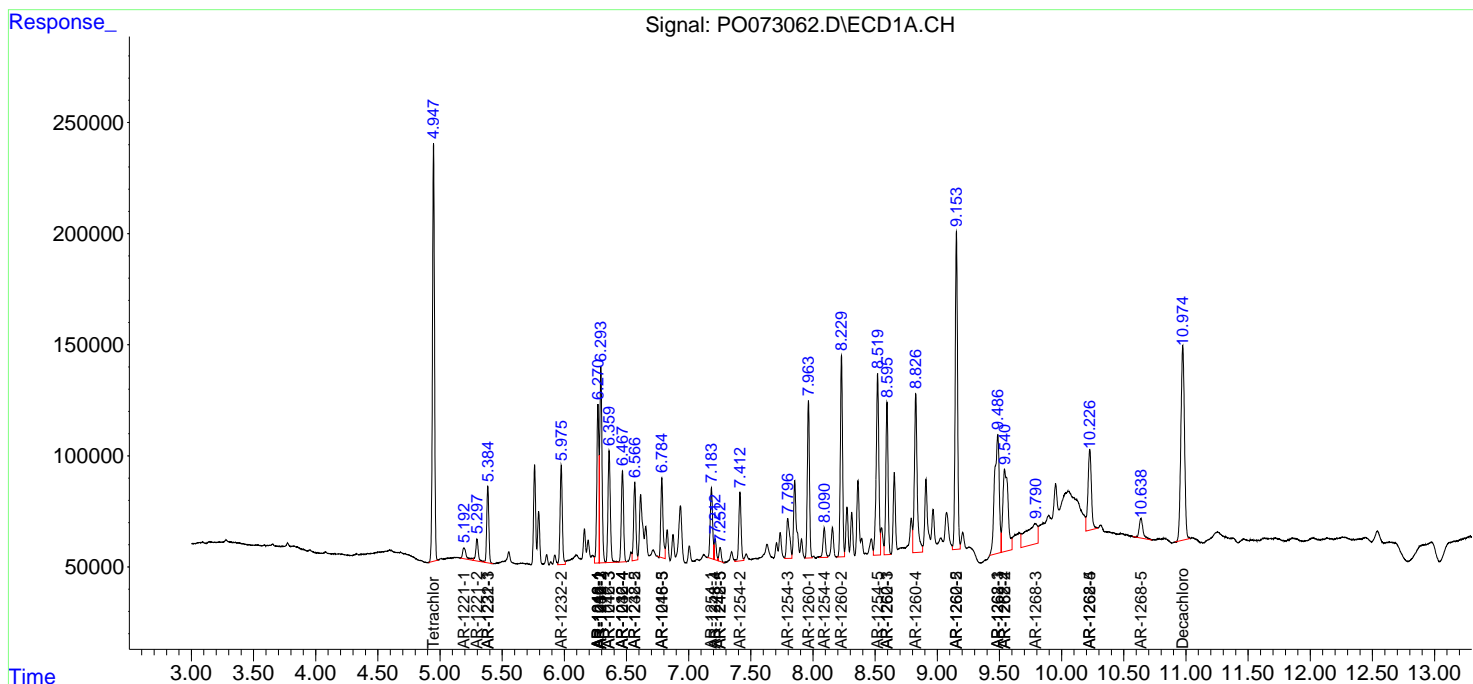
(f)=RT Delta > 1/2 Window (#)=Amounts differ by > 25% (m)=manual int.

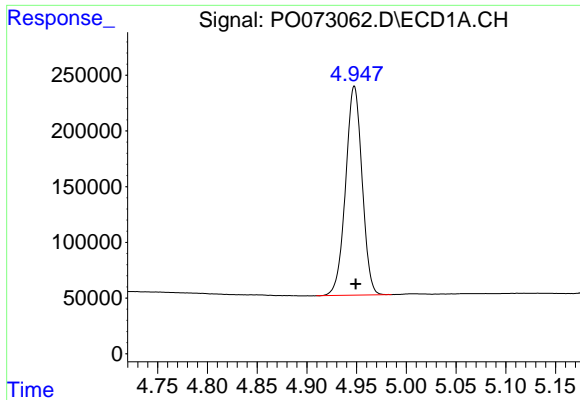
Data Path : Z:\pestpcbsrv\HPCHEM1\ECD_O\Data\PO110420\
 Data File : PO073062.D
 Signal(s) : Signal #1: ECD1A.CH Signal #2: ECD2B.CH
 Acq On : 04 Nov 2020 9:12
 Operator : DD\AJ
 Sample : AR1660CCC500
 Misc :
 ALS Vial : 3 Sample Multiplier: 1

Instrument :
 ECD_O
 ClientSampled :

Integration File signal 1: autoint1.e
 Integration File signal 2: autoint2.e
 Quant Time: Nov 05 05:46:13 2020
 Quant Method : Z:\pestpcbsrv\HPCHEM1\ECD_O\methods\PO110420.M
 Quant Title : GC EXTRACTABLES
 QLast Update : Thu Nov 05 05:38:46 2020
 Response via : Initial Calibration
 Integrator: ChemStation 6890 Scale Mode: Small noise peaks clipped

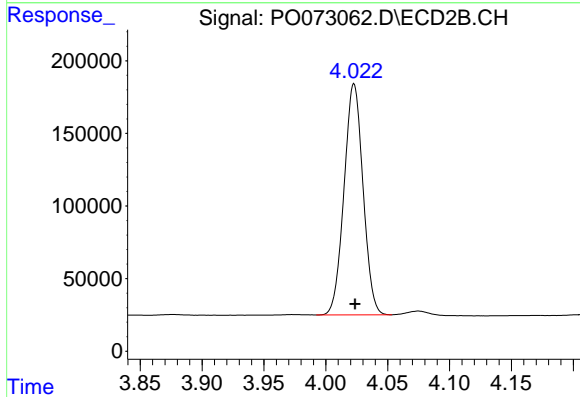
Volume Inj. : 2 µl
 Signal #1 Phase : ZB-MR1 Signal #2 Phase: ZB-MR2
 Signal #1 Info : 30Mx0.32mmx 0.50µ Signal #2 Info : 30M x 0.32mm x 0.25µm



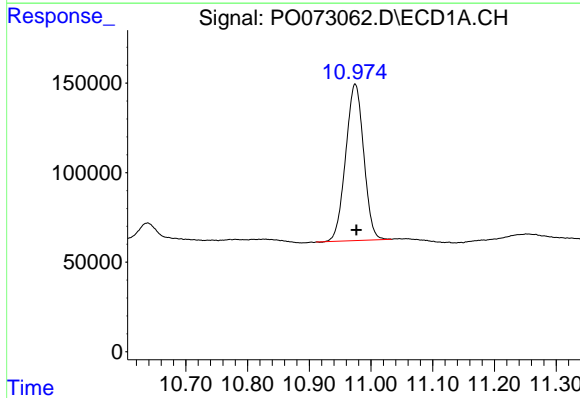


#1 Tetrachloro-m-xylene
 R.T.: 4.948 min
 Delta R.T.: -0.001 min
 Response: 2162928
 Conc: 40.81 ng/ml

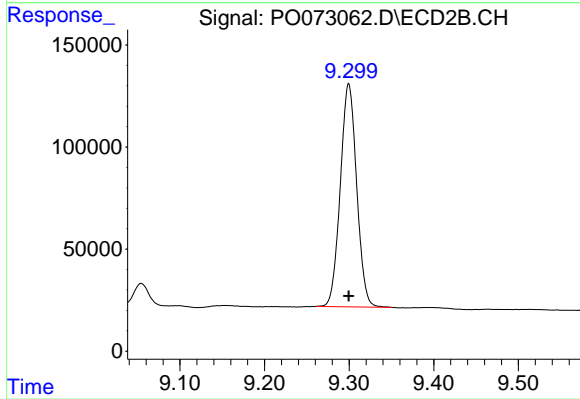
Instrument :
 ECD_O
 ClientSampled :



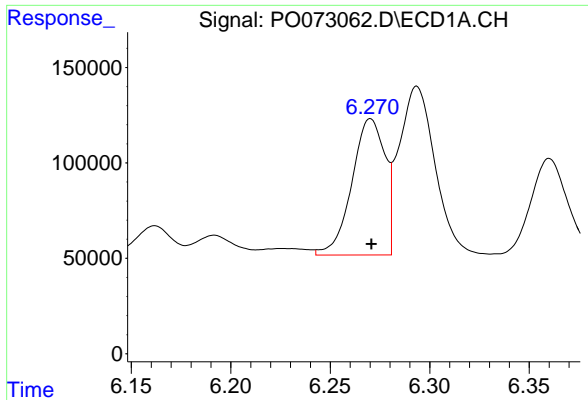
#1 Tetrachloro-m-xylene
 R.T.: 4.023 min
 Delta R.T.: 0.000 min
 Response: 1700514
 Conc: 47.59 ng/ml



#2 Decachlorobiphenyl
 R.T.: 10.974 min
 Delta R.T.: -0.002 min
 Response: 1772105
 Conc: 42.82 ng/ml

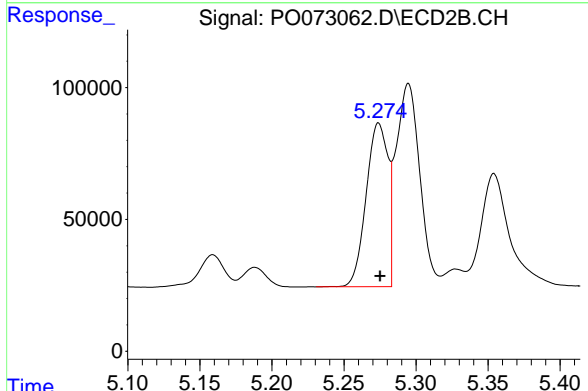


#2 Decachlorobiphenyl
 R.T.: 9.300 min
 Delta R.T.: 0.000 min
 Response: 1471725
 Conc: 44.11 ng/ml

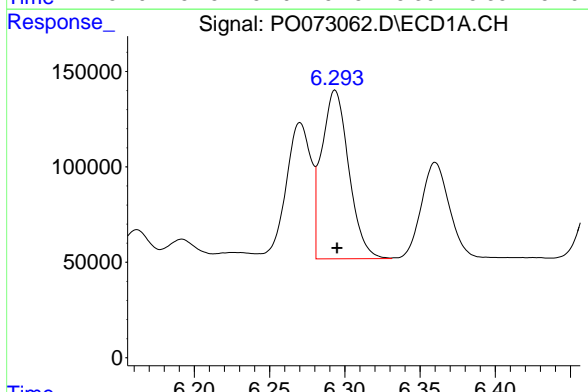


#3 AR-1016-1
 R.T.: 6.270 min
 Delta R.T.: 0.000 min
 Response: 826637
 Conc: 416.75 ng/ml

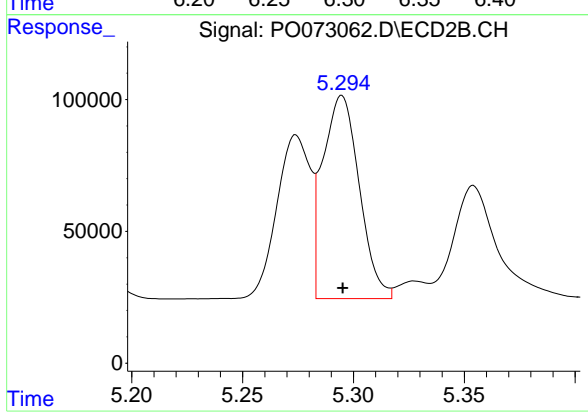
Instrument :
 ECD_O
 ClientSampled :



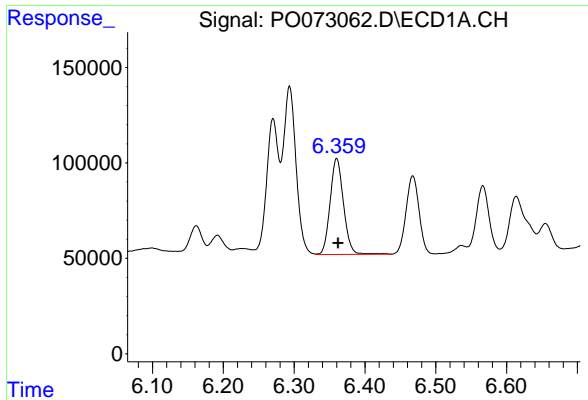
#3 AR-1016-1
 R.T.: 5.274 min
 Delta R.T.: 0.000 min
 Response: 653369
 Conc: 443.66 ng/ml



#4 AR-1016-2
 R.T.: 6.294 min
 Delta R.T.: -0.001 min
 Response: 1109078
 Conc: 404.56 ng/ml



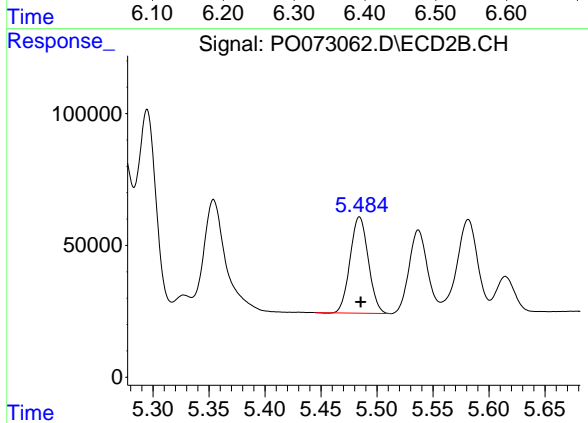
#4 AR-1016-2
 R.T.: 5.295 min
 Delta R.T.: 0.000 min
 Response: 882220
 Conc: 443.44 ng/ml



#5 AR-1016-3

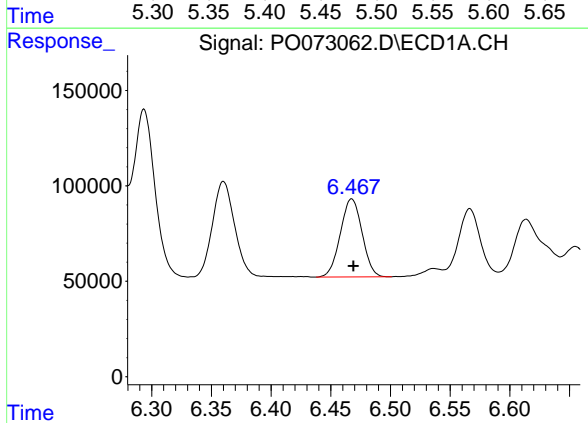
R.T.: 6.360 min
 Delta R.T.: -0.002 min
 Response: 661463
 Conc: 396.89 ng/ml

Instrument :
 ECD_O
 ClientSampled :



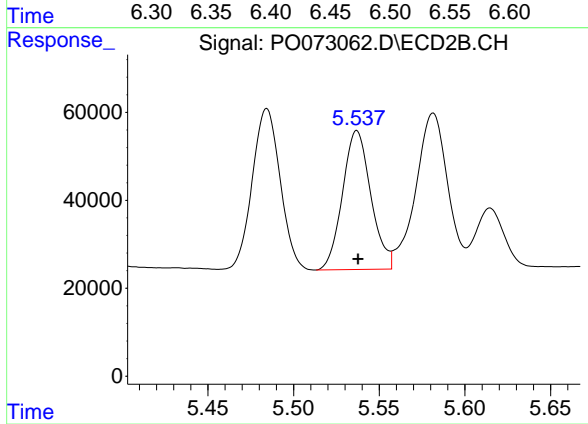
#5 AR-1016-3

R.T.: 5.484 min
 Delta R.T.: -0.001 min
 Response: 413508
 Conc: 434.50 ng/ml



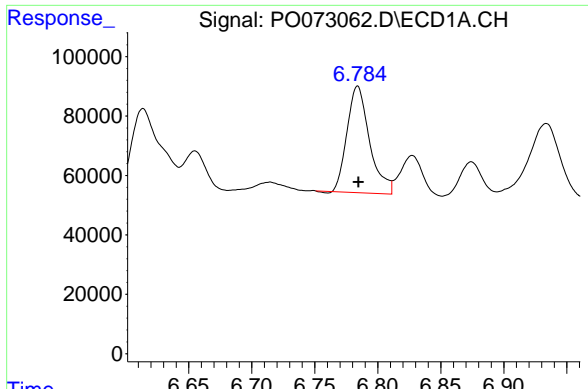
#6 AR-1016-4

R.T.: 6.468 min
 Delta R.T.: -0.002 min
 Response: 519658
 Conc: 385.52 ng/ml



#6 AR-1016-4

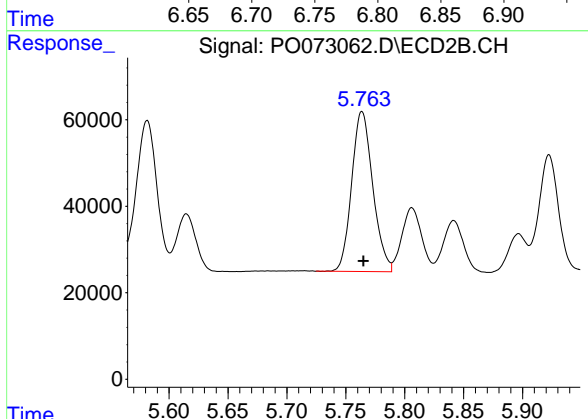
R.T.: 5.537 min
 Delta R.T.: 0.000 min
 Response: 363510
 Conc: 431.62 ng/ml



#7 AR-1016-5

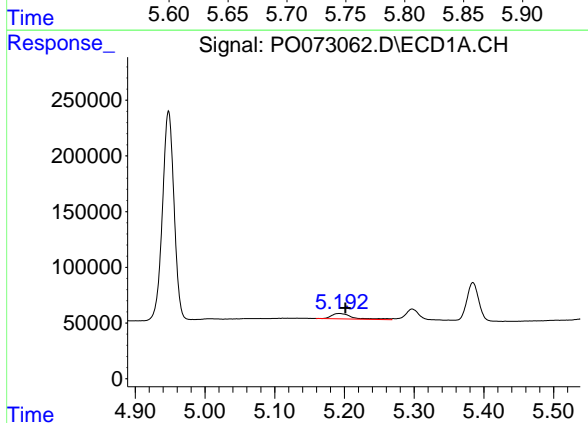
R.T.: 6.784 min
Delta R.T.: 0.000 min
Response: 445907
Conc: 393.07 ng/ml

Instrument :
ECD_O
ClientSampled :



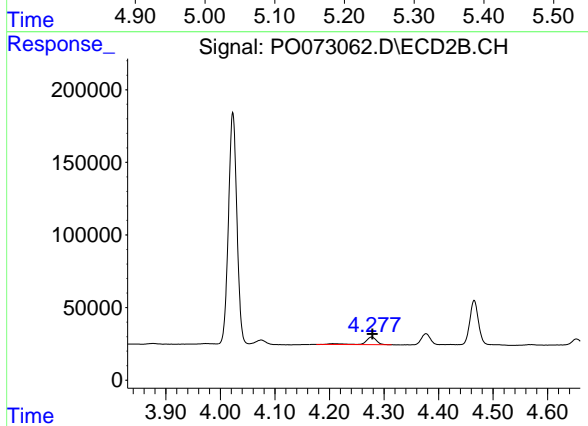
#7 AR-1016-5

R.T.: 5.764 min
Delta R.T.: -0.001 min
Response: 461632
Conc: 428.37 ng/ml



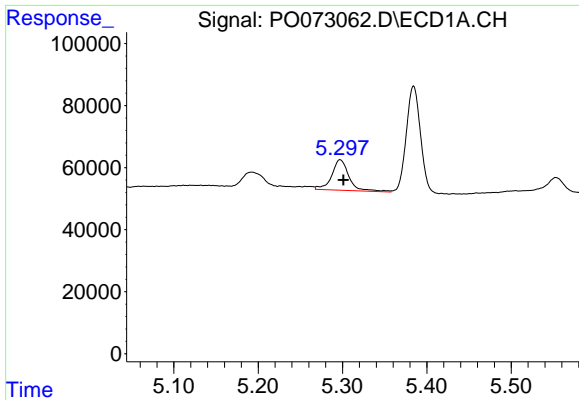
#8 AR-1221-1

R.T.: 5.192 min
Delta R.T.: -0.009 min
Response: 103003
Conc: 149.54 ng/ml



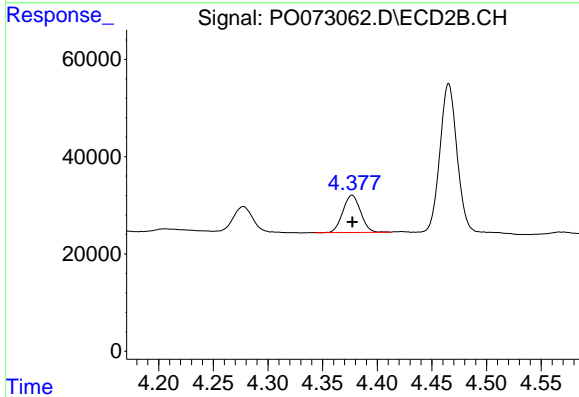
#8 AR-1221-1

R.T.: 4.277 min
Delta R.T.: -0.001 min
Response: 79806
Conc: 168.38 ng/ml

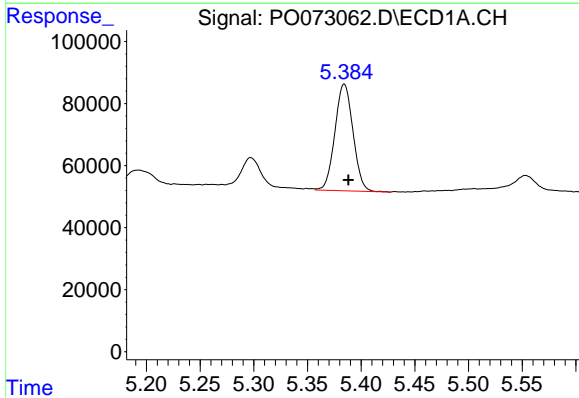


#9 AR-1221-2
 R.T.: 5.297 min
 Delta R.T.: -0.004 min
 Response: 140447
 Conc: 276.05 ng/ml

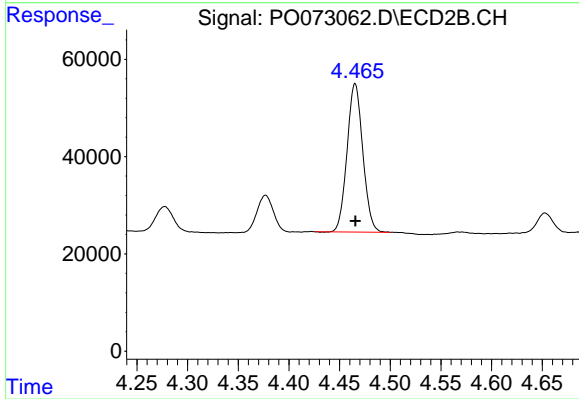
Instrument :
 ECD_O
 ClientSampleId :



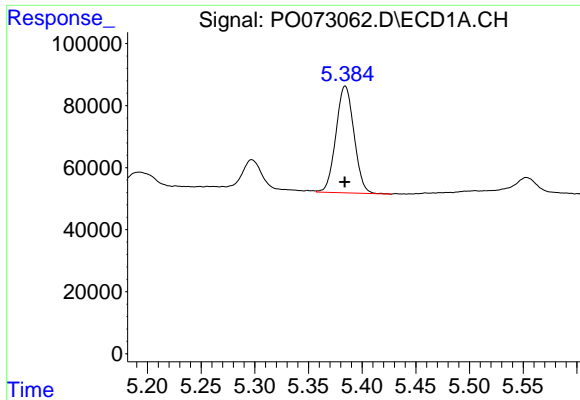
#9 AR-1221-2
 R.T.: 4.377 min
 Delta R.T.: 0.000 min
 Response: 86084
 Conc: 240.39 ng/ml



#10 AR-1221-3
 R.T.: 5.384 min
 Delta R.T.: -0.004 min
 Response: 404558
 Conc: 258.62 ng/ml

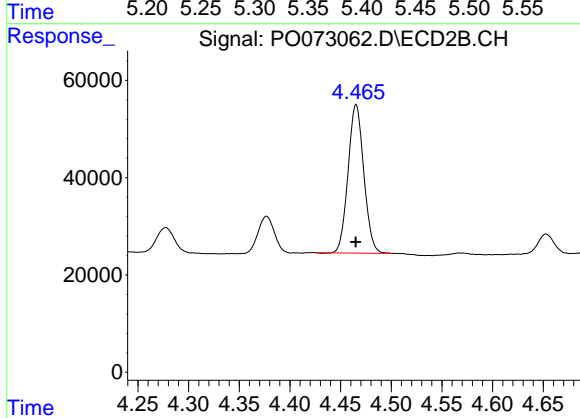


#10 AR-1221-3
 R.T.: 4.465 min
 Delta R.T.: 0.000 min
 Response: 330141
 Conc: 300.87 ng/ml

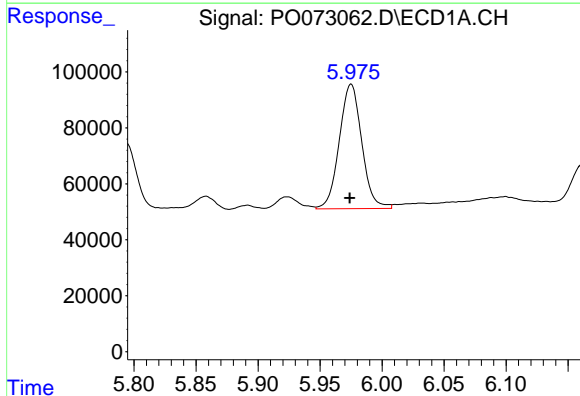


#11 AR-1232-1
 R.T.: 5.384 min
 Delta R.T.: 0.000 min
 Response: 404558
 Conc: 323.10 ng/ml

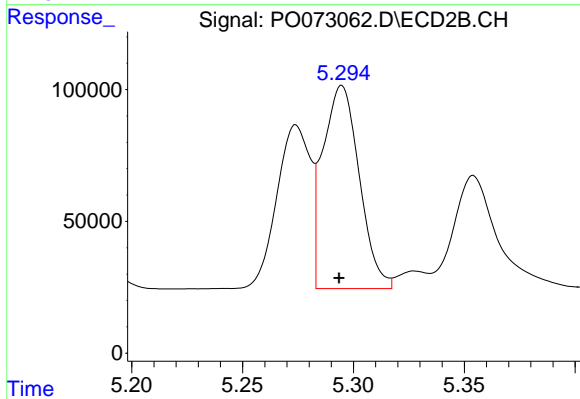
Instrument :
 ECD_O
 ClientSampleId :



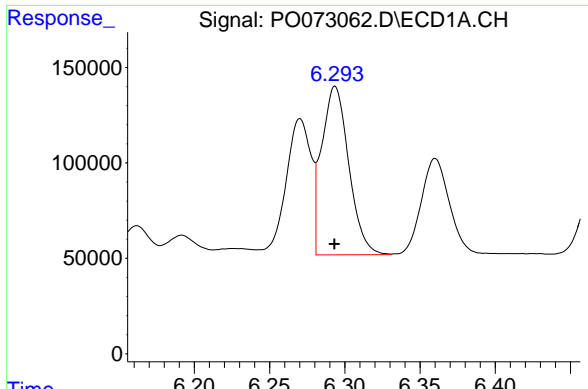
#11 AR-1232-1
 R.T.: 4.465 min
 Delta R.T.: 0.000 min
 Response: 330141
 Conc: 383.54 ng/ml



#12 AR-1232-2
 R.T.: 5.975 min
 Delta R.T.: 0.001 min
 Response: 562151
 Conc: 908.52 ng/ml



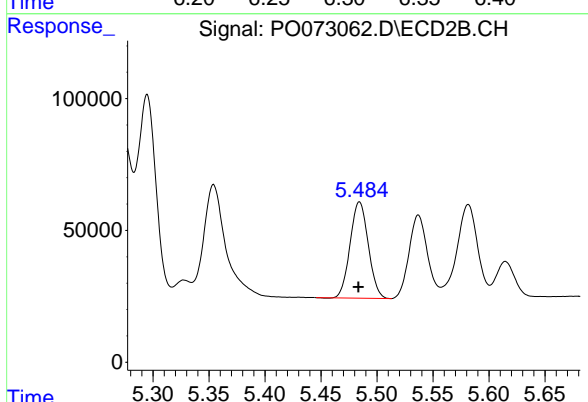
#12 AR-1232-2
 R.T.: 5.295 min
 Delta R.T.: 0.001 min
 Response: 882220
 Conc: 998.82 ng/ml



#13 AR-1232-3

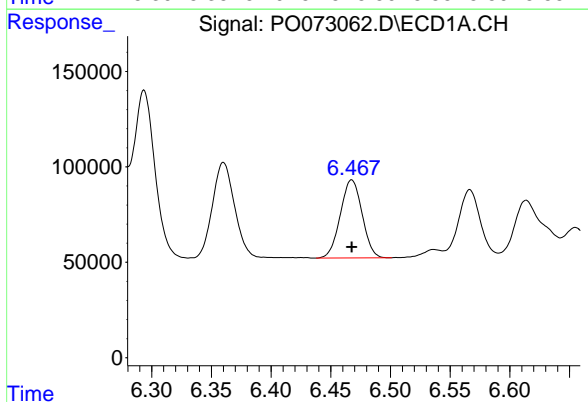
R.T.: 6.294 min
 Delta R.T.: 0.000 min
 Response: 1109078
 Conc: 881.62 ng/ml

Instrument :
 ECD_O
 ClientSampleId :



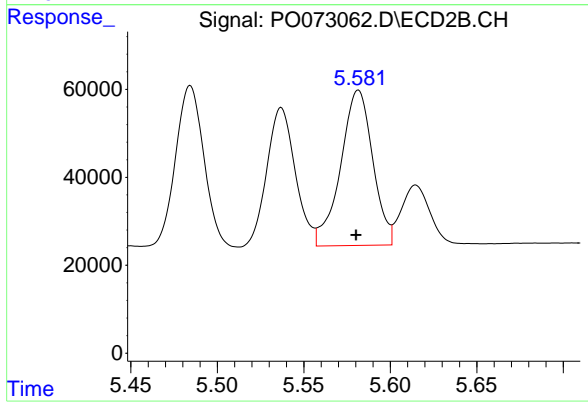
#13 AR-1232-3

R.T.: 5.484 min
 Delta R.T.: 0.000 min
 Response: 413508
 Conc: 969.02 ng/ml



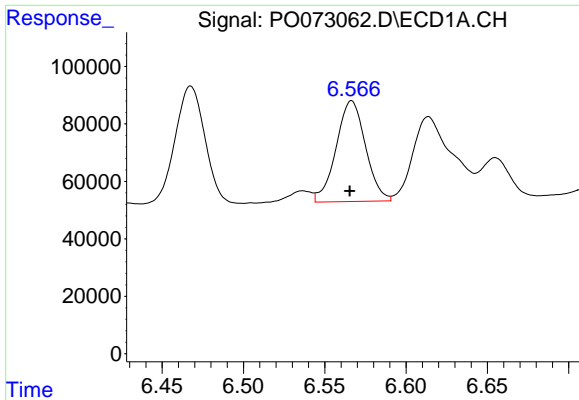
#14 AR-1232-4

R.T.: 6.468 min
 Delta R.T.: 0.000 min
 Response: 519658
 Conc: 851.80 ng/ml



#14 AR-1232-4

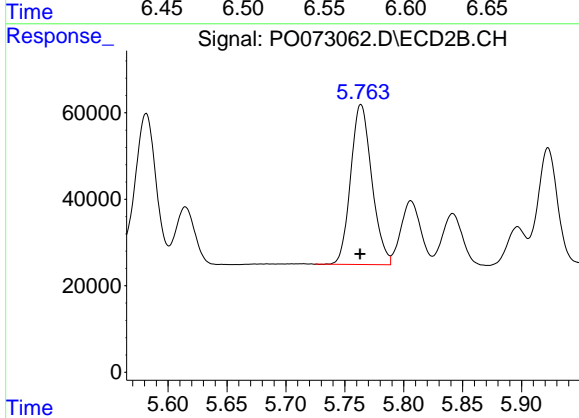
R.T.: 5.581 min
 Delta R.T.: 0.001 min
 Response: 456077
 Conc: 1083.16 ng/ml



#15 AR-1232-5

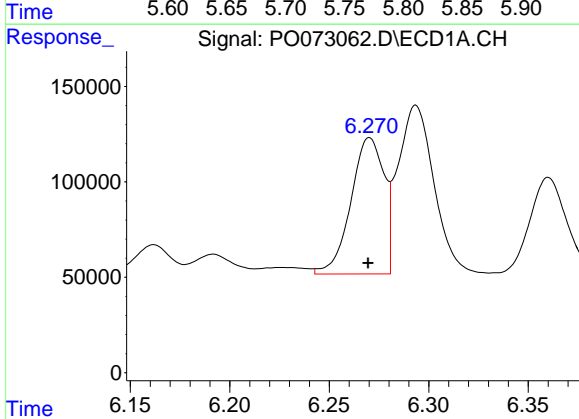
R.T.: 6.566 min
 Delta R.T.: 0.001 min
 Response: 441634
 Conc: 1055.18 ng/ml

Instrument :
 ECD_O
 ClientSampleId :



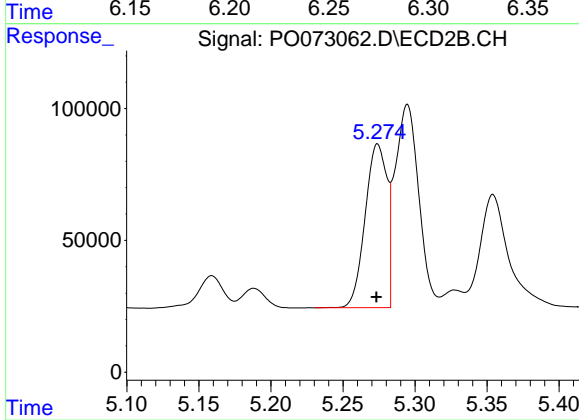
#15 AR-1232-5

R.T.: 5.764 min
 Delta R.T.: 0.000 min
 Response: 461632
 Conc: 1031.21 ng/ml



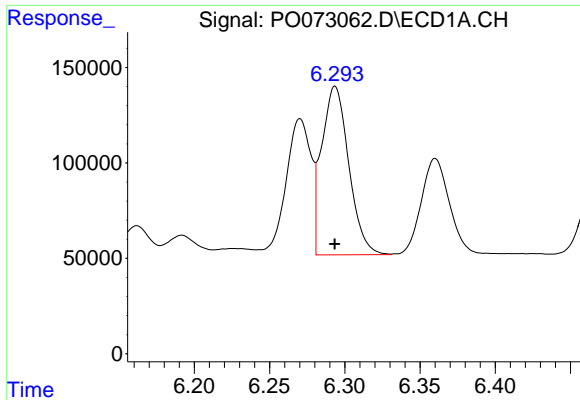
#16 AR-1242-1

R.T.: 6.270 min
 Delta R.T.: 0.000 min
 Response: 826637
 Conc: 475.47 ng/ml



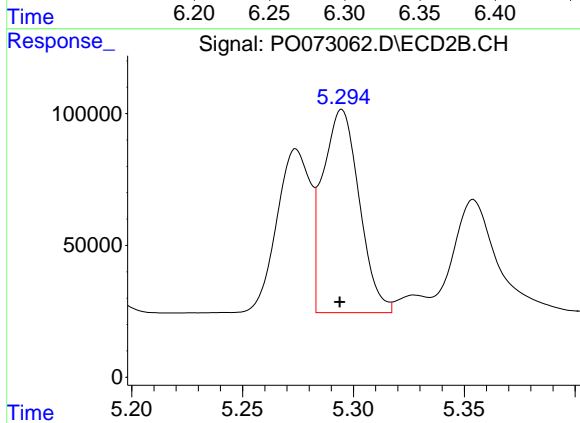
#16 AR-1242-1

R.T.: 5.274 min
 Delta R.T.: 0.000 min
 Response: 653369
 Conc: 522.46 ng/ml

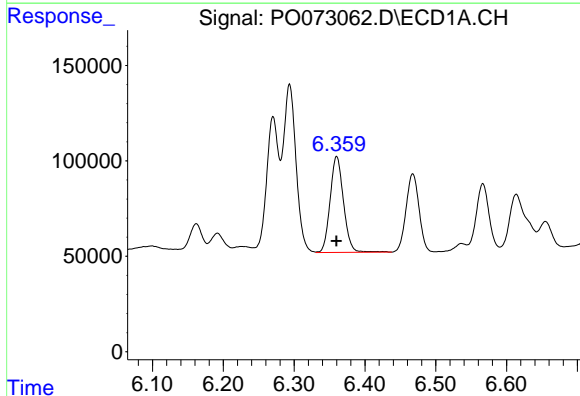


#17 AR-1242-2
 R.T.: 6.294 min
 Delta R.T.: 0.000 min
 Response: 1109078
 Conc: 463.05 ng/ml

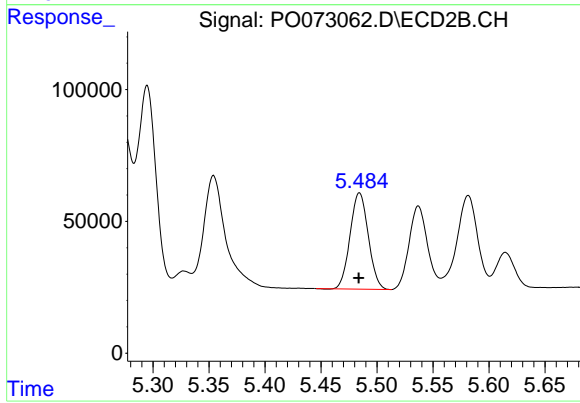
Instrument :
 ECD_O
 ClientSampleId :



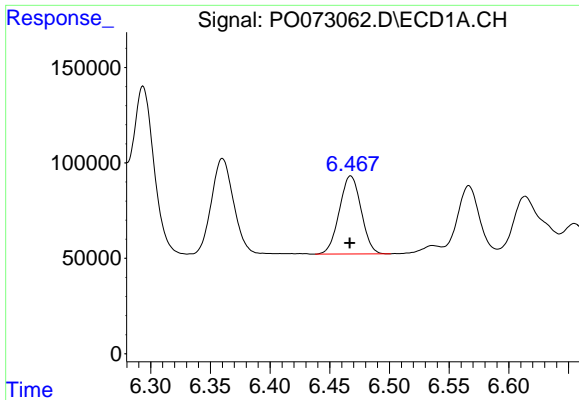
#17 AR-1242-2
 R.T.: 5.295 min
 Delta R.T.: 0.000 min
 Response: 882220
 Conc: 529.54 ng/ml



#18 AR-1242-3
 R.T.: 6.360 min
 Delta R.T.: 0.000 min
 Response: 661463
 Conc: 451.75 ng/ml



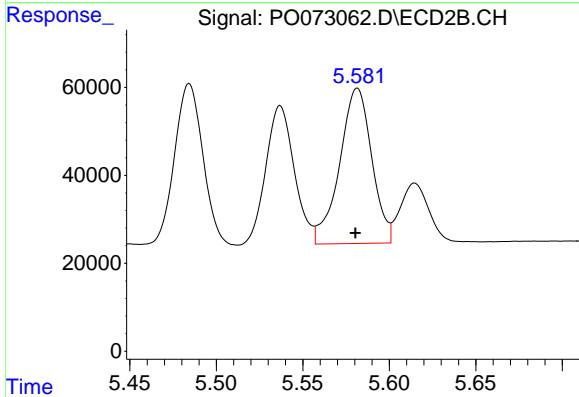
#18 AR-1242-3
 R.T.: 5.484 min
 Delta R.T.: 0.000 min
 Response: 413508
 Conc: 496.07 ng/ml



#19 AR-1242-4

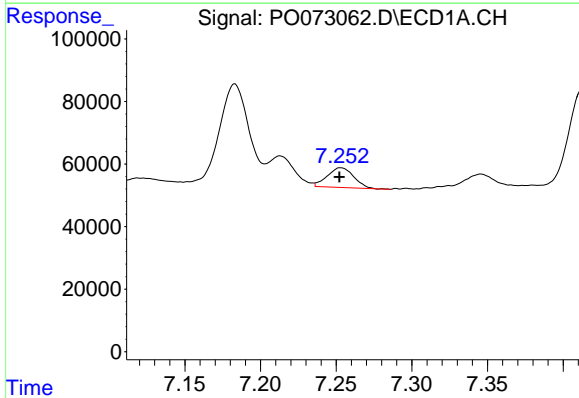
R.T.: 6.468 min
 Delta R.T.: 0.000 min
 Response: 519658
 Conc: 431.26 ng/ml

Instrument :
 ECD_O
 ClientSampled :



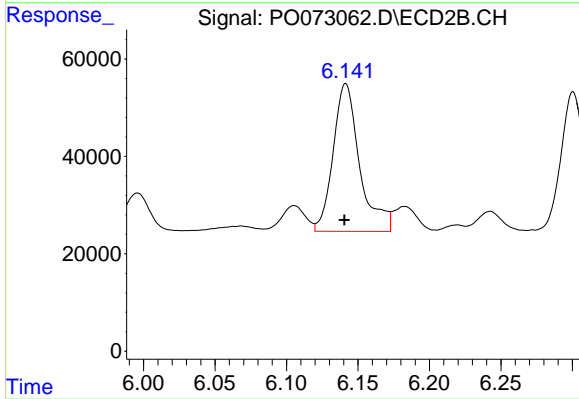
#19 AR-1242-4

R.T.: 5.581 min
 Delta R.T.: 0.001 min
 Response: 456077
 Conc: 520.33 ng/ml



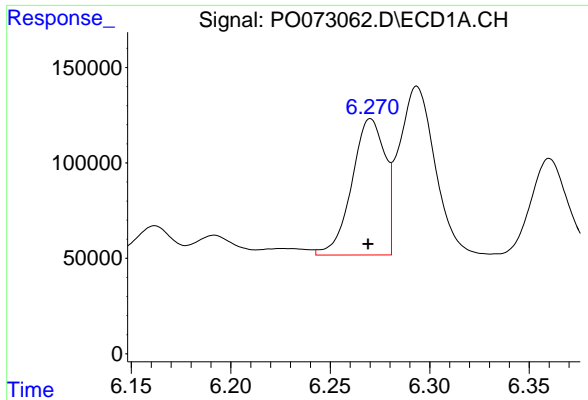
#20 AR-1242-5

R.T.: 7.253 min
 Delta R.T.: 0.001 min
 Response: 76550
 Conc: 58.48 ng/ml



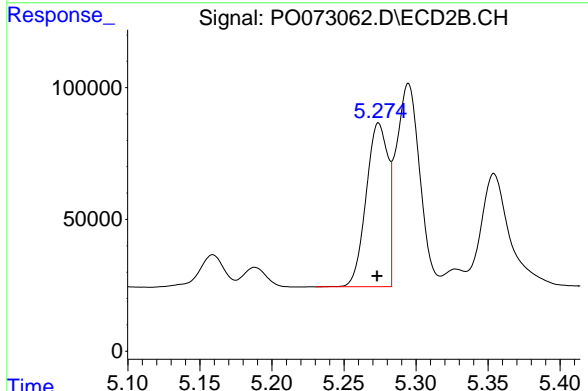
#20 AR-1242-5

R.T.: 6.141 min
 Delta R.T.: 0.000 min
 Response: 391451
 Conc: 344.30 ng/ml

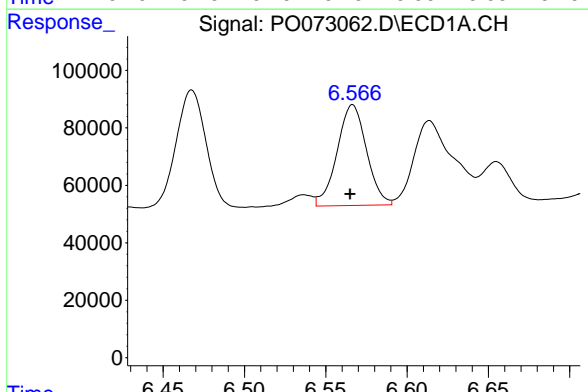


#21 AR-1248-1
 R.T.: 6.270 min
 Delta R.T.: 0.001 min
 Response: 826637
 Conc: 613.98 ng/ml

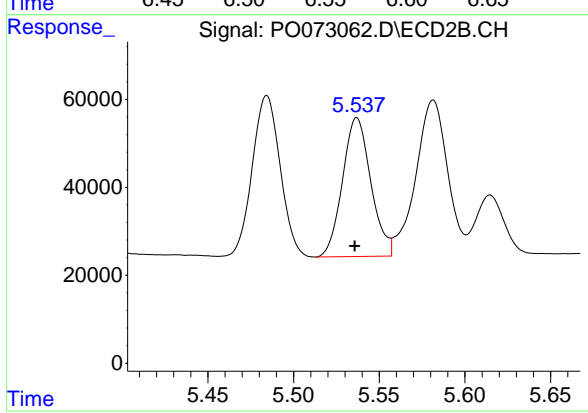
Instrument :
 ECD_O
 ClientSampled :



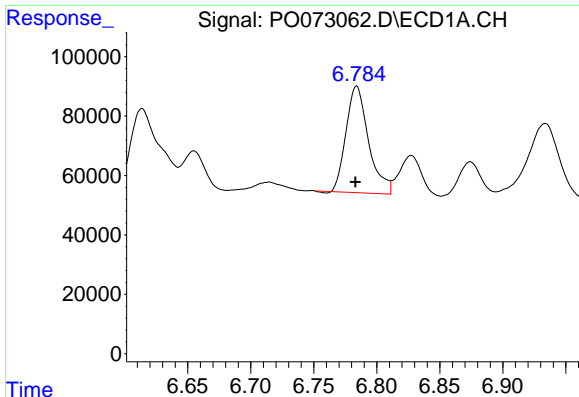
#21 AR-1248-1
 R.T.: 5.274 min
 Delta R.T.: 0.001 min
 Response: 653369
 Conc: 696.90 ng/ml



#22 AR-1248-2
 R.T.: 6.566 min
 Delta R.T.: 0.002 min
 Response: 441634
 Conc: 254.57 ng/ml



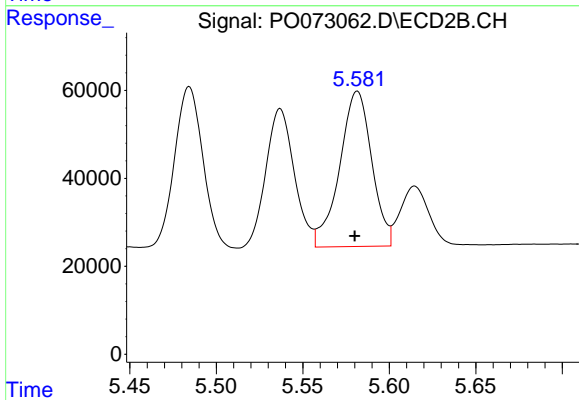
#22 AR-1248-2
 R.T.: 5.537 min
 Delta R.T.: 0.001 min
 Response: 363510
 Conc: 280.66 ng/ml



#23 AR-1248-3

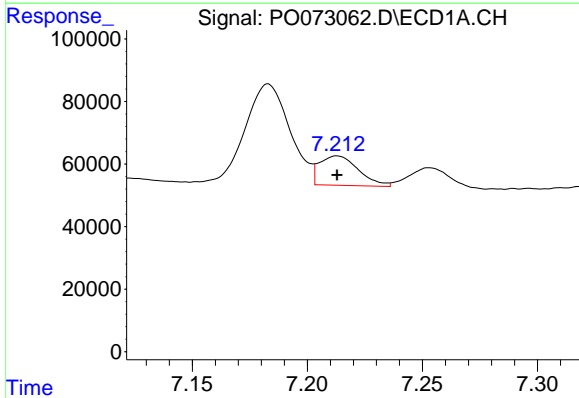
R.T.: 6.784 min
 Delta R.T.: 0.000 min
 Response: 445907
 Conc: 237.84 ng/ml

Instrument :
 ECD_O
 ClientSampleId :



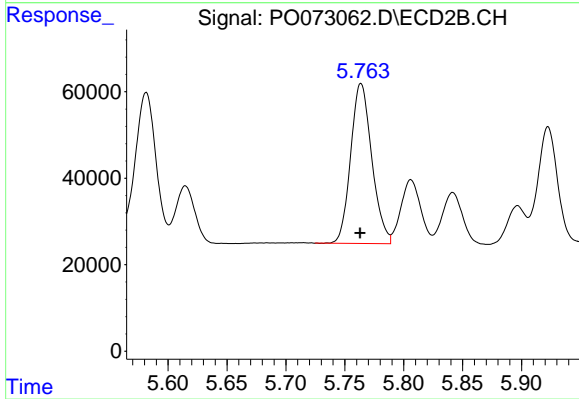
#23 AR-1248-3

R.T.: 5.581 min
 Delta R.T.: 0.002 min
 Response: 456077
 Conc: 337.56 ng/ml



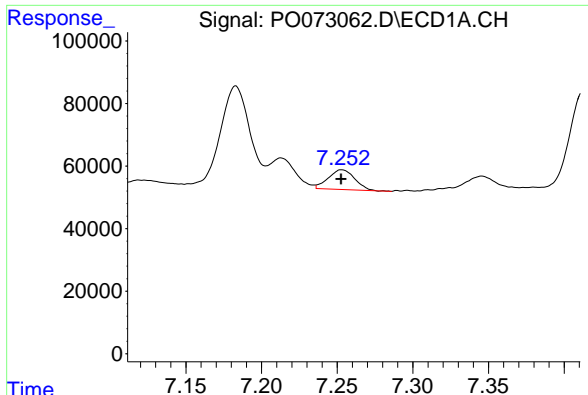
#24 AR-1248-4

R.T.: 7.213 min
 Delta R.T.: 0.000 min
 Response: 110804
 Conc: 45.83 ng/ml



#24 AR-1248-4

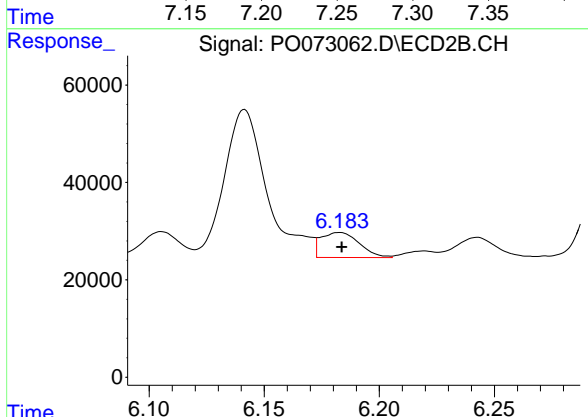
R.T.: 5.764 min
 Delta R.T.: 0.000 min
 Response: 461632
 Conc: 291.08 ng/ml



#25 AR-1248-5

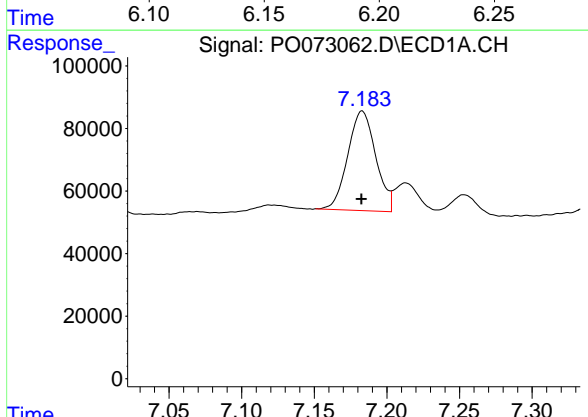
R.T.: 7.253 min
 Delta R.T.: 0.000 min
 Response: 76550
 Conc: 33.35 ng/ml

Instrument :
 ECD_O
 ClientSampleId :



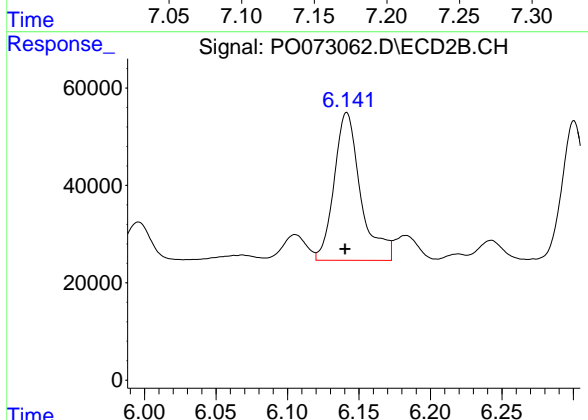
#25 AR-1248-5

R.T.: 6.183 min
 Delta R.T.: -0.001 min
 Response: 59868
 Conc: 37.60 ng/ml



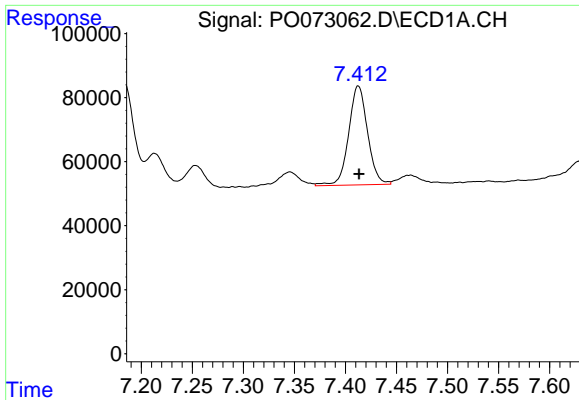
#26 AR-1254-1

R.T.: 7.183 min
 Delta R.T.: 0.000 min
 Response: 426859
 Conc: 182.44 ng/ml



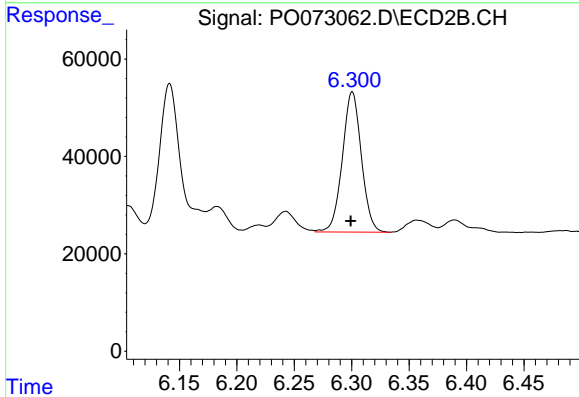
#26 AR-1254-1

R.T.: 6.141 min
 Delta R.T.: 0.001 min
 Response: 391451
 Conc: 162.93 ng/ml

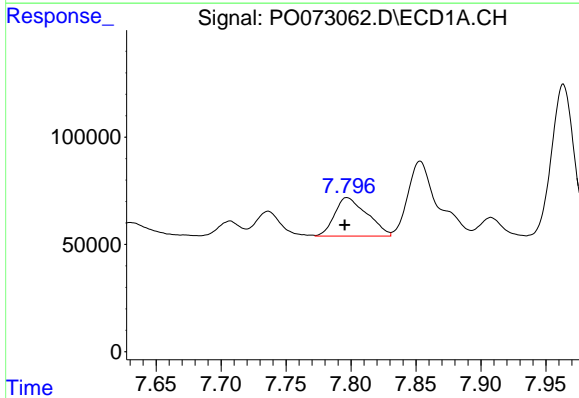


#27 AR-1254-2
 R.T.: 7.413 min
 Delta R.T.: 0.000 min
 Response: 399235
 Conc: 113.30 ng/ml

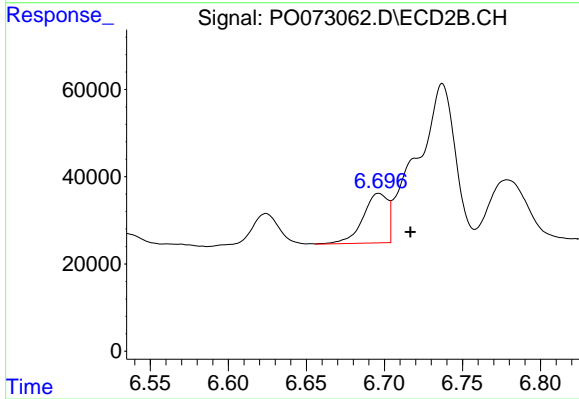
Instrument :
 ECD_O
 ClientSampleId :



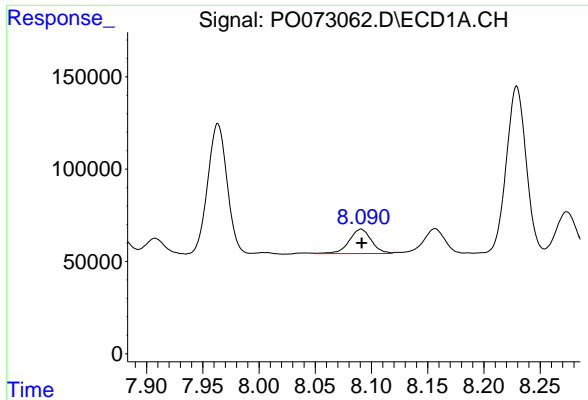
#27 AR-1254-2
 R.T.: 6.301 min
 Delta R.T.: 0.001 min
 Response: 333811
 Conc: 155.97 ng/ml



#28 AR-1254-3
 R.T.: 7.797 min
 Delta R.T.: 0.002 min
 Response: 311995
 Conc: 86.75 ng/ml



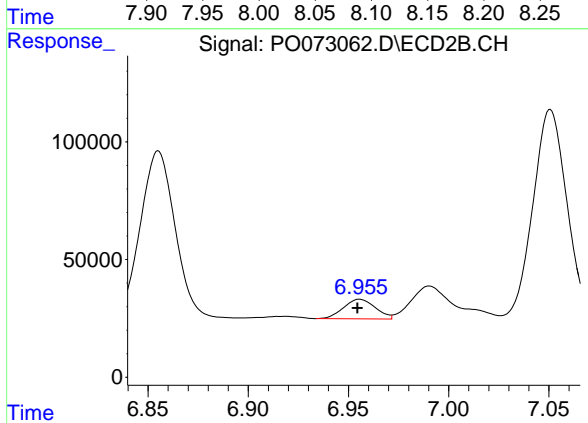
#28 AR-1254-3
 R.T.: 6.696 min
 Delta R.T.: -0.020 min
 Response: 125613
 Conc: 37.34 ng/ml



#29 AR-1254-4

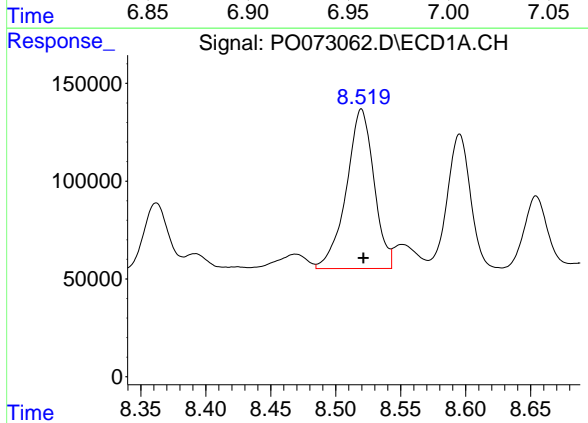
R.T.: 8.091 min
 Delta R.T.: 0.000 min
 Response: 180786
 Conc: 60.08 ng/ml

Instrument :
 ECD_O
 ClientSampled :



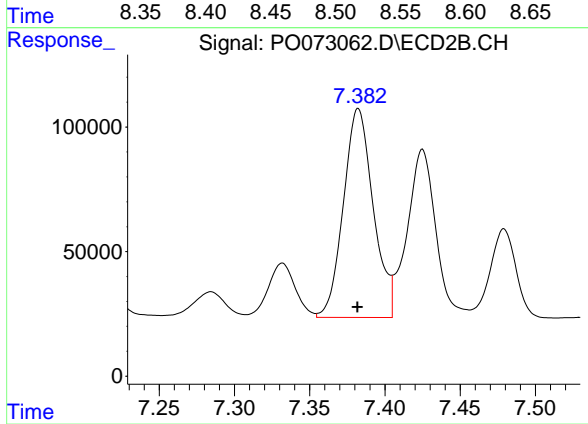
#29 AR-1254-4

R.T.: 6.956 min
 Delta R.T.: 0.001 min
 Response: 92392
 Conc: 41.60 ng/ml



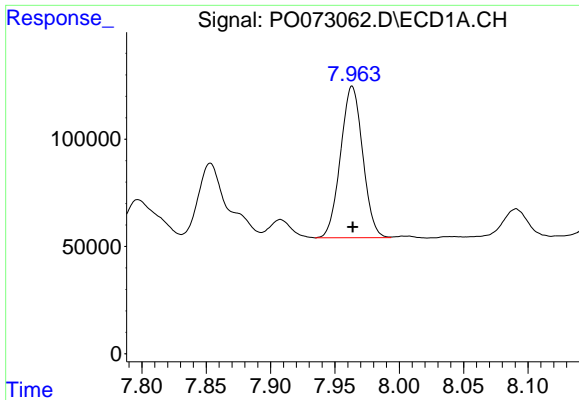
#30 AR-1254-5

R.T.: 8.520 min
 Delta R.T.: -0.002 min
 Response: 1204964
 Conc: 416.26 ng/ml



#30 AR-1254-5

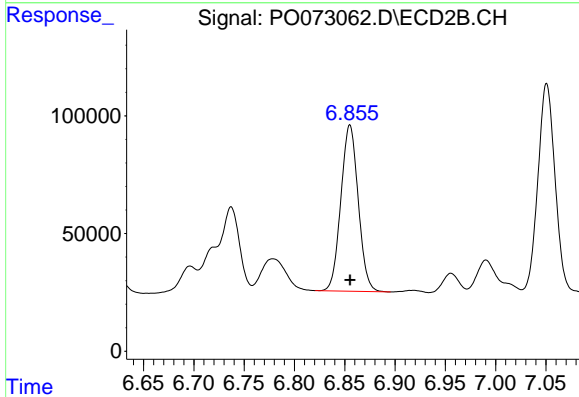
R.T.: 7.382 min
 Delta R.T.: 0.000 min
 Response: 1157343
 Conc: 381.26 ng/ml



#31 AR-1260-1

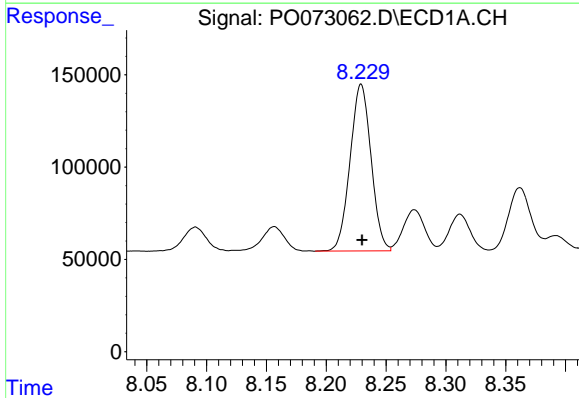
R.T.: 7.963 min
 Delta R.T.: 0.000 min
 Response: 845921
 Conc: 388.35 ng/ml

Instrument :
 ECD_O
 ClientSampled :



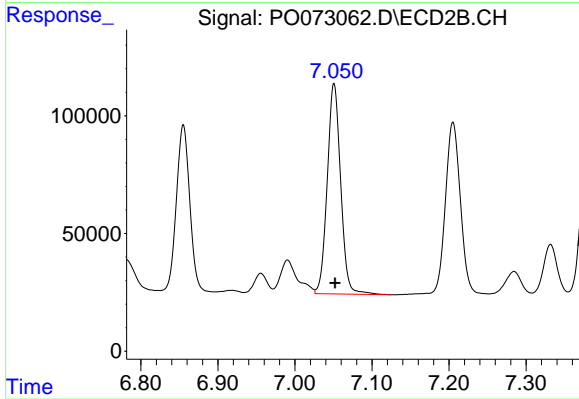
#31 AR-1260-1

R.T.: 6.855 min
 Delta R.T.: 0.000 min
 Response: 848021
 Conc: 422.10 ng/ml



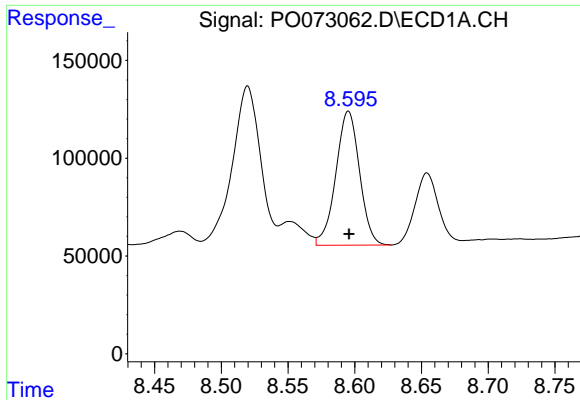
#32 AR-1260-2

R.T.: 8.229 min
 Delta R.T.: 0.000 min
 Response: 1103646
 Conc: 407.38 ng/ml



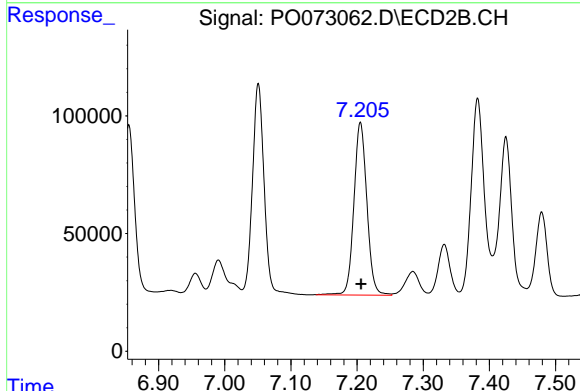
#32 AR-1260-2

R.T.: 7.051 min
 Delta R.T.: -0.001 min
 Response: 1084962
 Conc: 437.18 ng/ml

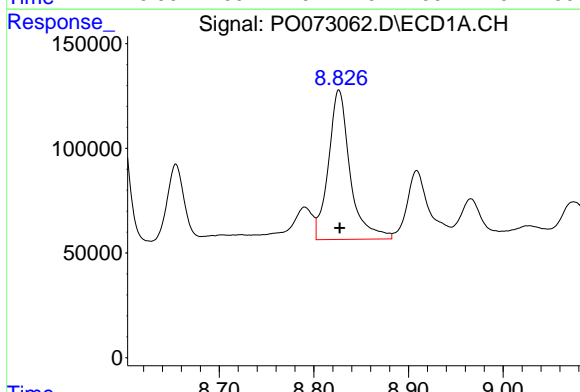


#33 AR-1260-3
 R.T.: 8.595 min
 Delta R.T.: 0.000 min
 Response: 846242
 Conc: 411.12 ng/ml

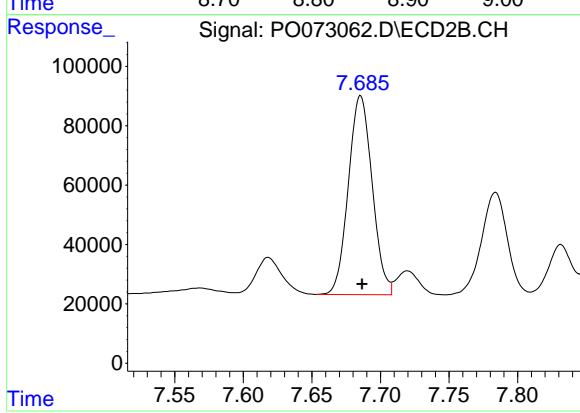
Instrument :
 ECD_O
 ClientSampled :



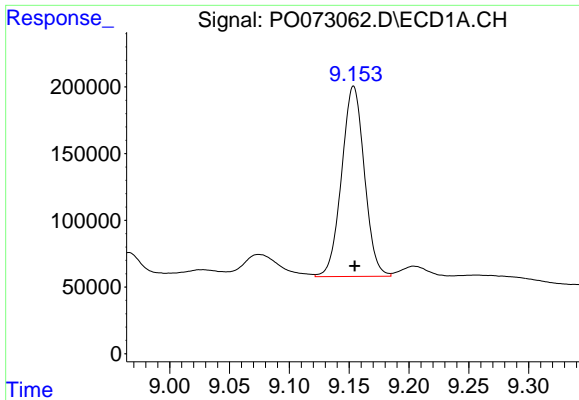
#33 AR-1260-3
 R.T.: 7.205 min
 Delta R.T.: 0.000 min
 Response: 998470
 Conc: 442.36 ng/ml



#34 AR-1260-4
 R.T.: 8.826 min
 Delta R.T.: 0.000 min
 Response: 1135190
 Conc: 497.30 ng/ml



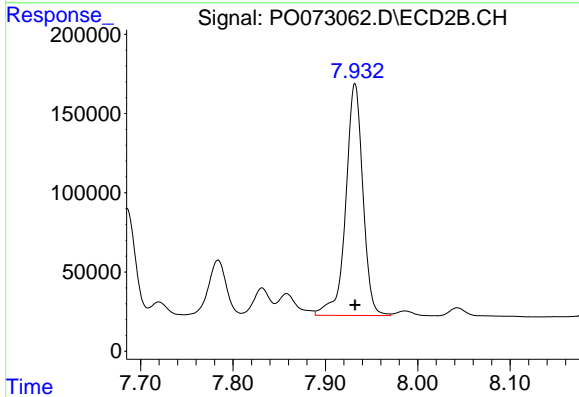
#34 AR-1260-4
 R.T.: 7.686 min
 Delta R.T.: -0.001 min
 Response: 810487
 Conc: 438.02 ng/ml



#35 AR-1260-5

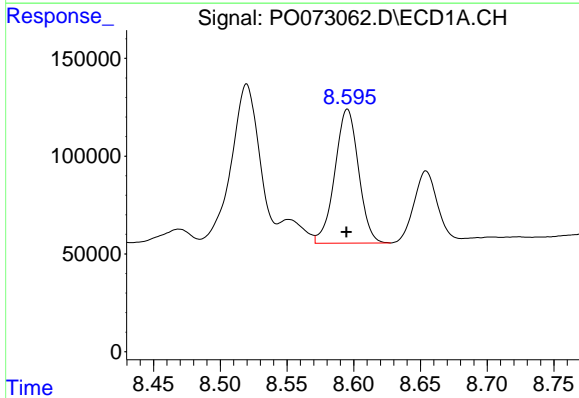
R.T.: 9.154 min
 Delta R.T.: 0.000 min
 Response: 1888849
 Conc: 428.23 ng/ml

Instrument :
 ECD_O
 ClientSampled :



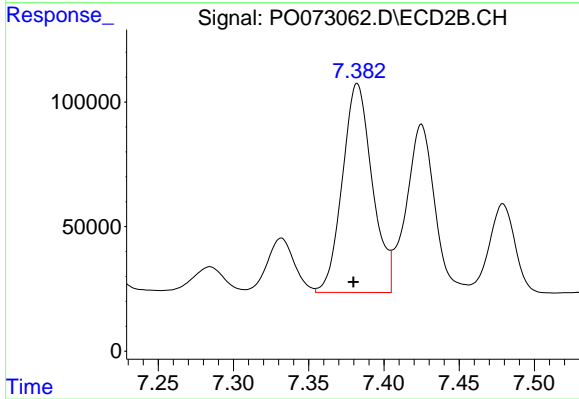
#35 AR-1260-5

R.T.: 7.932 min
 Delta R.T.: 0.000 min
 Response: 1886937
 Conc: 440.65 ng/ml



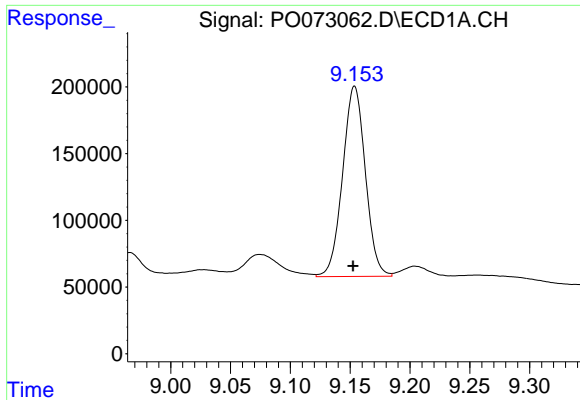
#36 AR-1262-1

R.T.: 8.595 min
 Delta R.T.: 0.000 min
 Response: 846242
 Conc: 248.32 ng/ml



#36 AR-1262-1

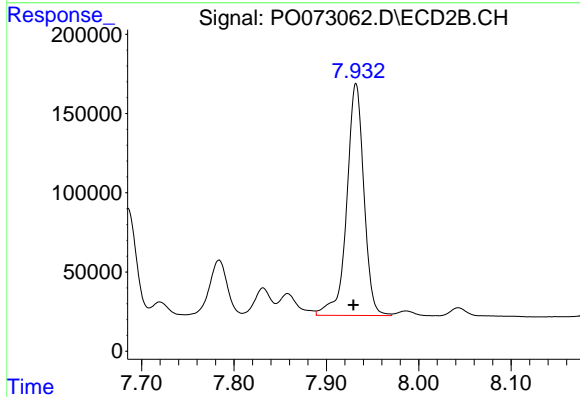
R.T.: 7.382 min
 Delta R.T.: 0.003 min
 Response: 1157343
 Conc: 743.17 ng/ml



#37 AR-1262-2

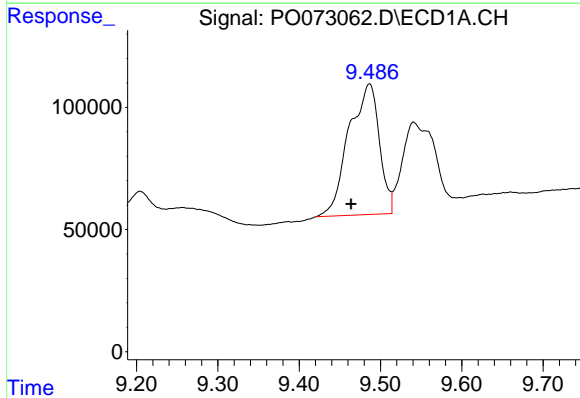
R.T.: 9.154 min
 Delta R.T.: 0.001 min
 Response: 1888849
 Conc: 325.37 ng/ml

Instrument :
 ECD_O
 ClientSampleId :



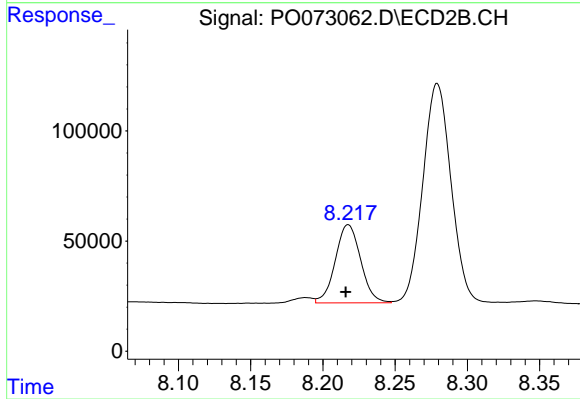
#37 AR-1262-2

R.T.: 7.932 min
 Delta R.T.: 0.003 min
 Response: 1886937
 Conc: 372.96 ng/ml



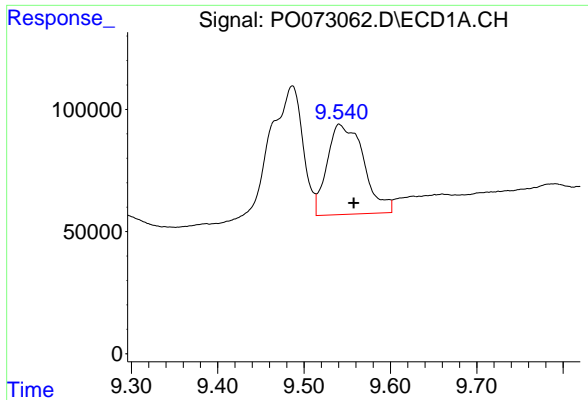
#38 AR-1262-3

R.T.: 9.486 min
 Delta R.T.: 0.023 min
 Response: 1392229
 Conc: 334.71 ng/ml



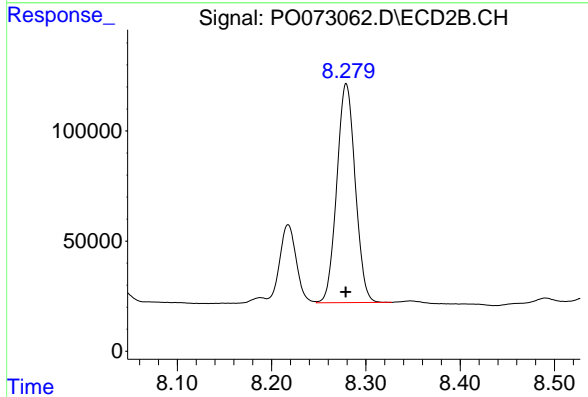
#38 AR-1262-3

R.T.: 8.218 min
 Delta R.T.: 0.002 min
 Response: 434054
 Conc: 213.82 ng/ml

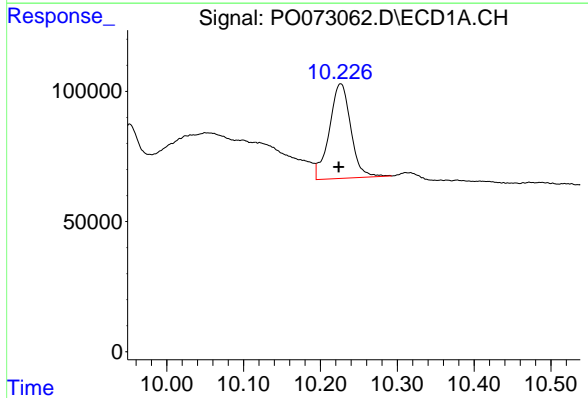


#39 AR-1262-4
 R.T.: 9.541 min
 Delta R.T.: -0.017 min
 Response: 1085108
 Conc: 337.44 ng/ml

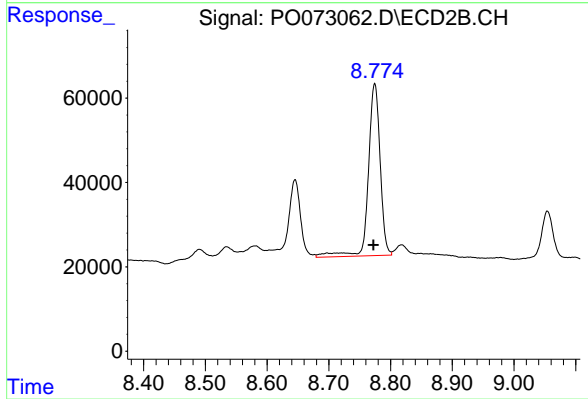
Instrument :
 ECD_O
 ClientSampled :



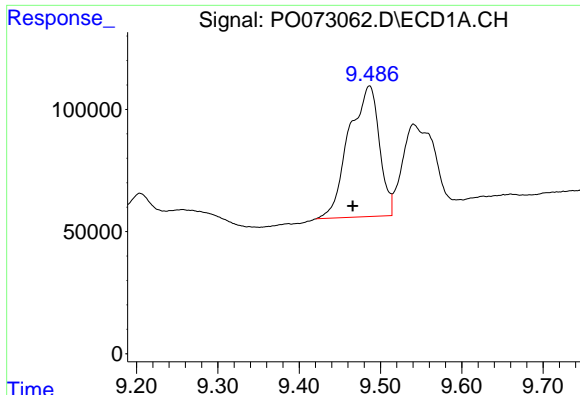
#39 AR-1262-4
 R.T.: 8.279 min
 Delta R.T.: 0.000 min
 Response: 1349830
 Conc: 367.63 ng/ml



#40 AR-1262-5
 R.T.: 10.226 min
 Delta R.T.: 0.002 min
 Response: 699604
 Conc: 332.63 ng/ml

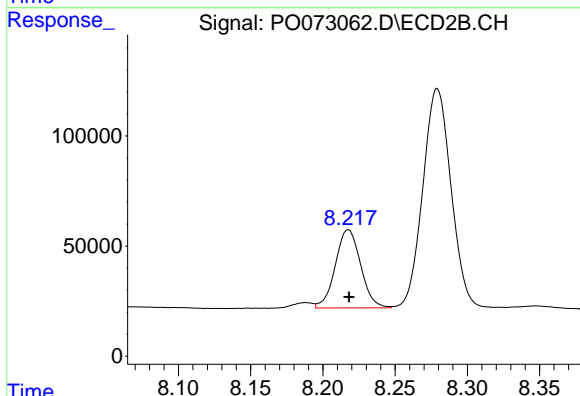


#40 AR-1262-5
 R.T.: 8.774 min
 Delta R.T.: 0.002 min
 Response: 541981
 Conc: 309.87 ng/ml

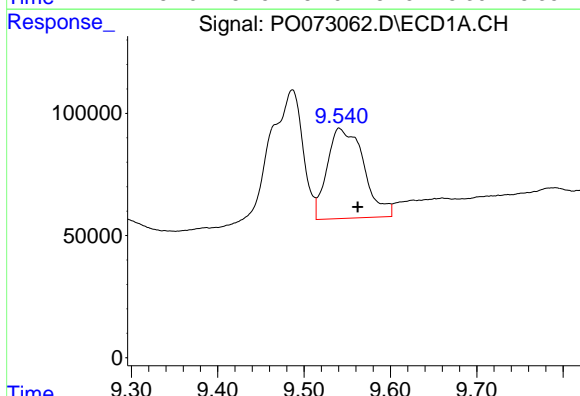


#41 AR-1268-1
 R.T.: 9.486 min
 Delta R.T.: 0.021 min
 Response: 1392229
 Conc: 196.46 ng/ml

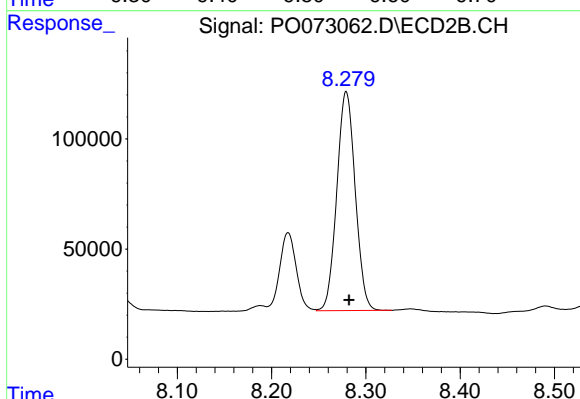
Instrument :
 ECD_O
 ClientSampled :



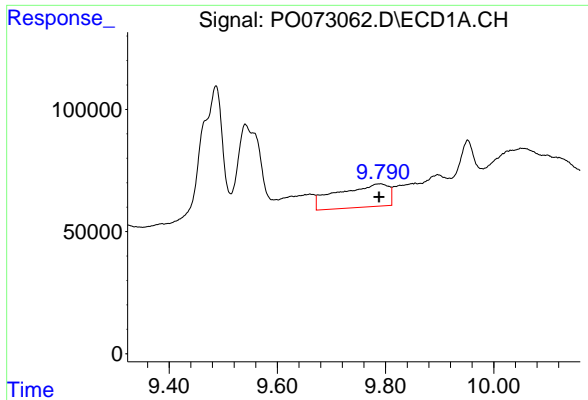
#41 AR-1268-1
 R.T.: 8.218 min
 Delta R.T.: 0.000 min
 Response: 434054
 Conc: 76.34 ng/ml



#42 AR-1268-2
 R.T.: 9.541 min
 Delta R.T.: -0.022 min
 Response: 1085108
 Conc: 167.49 ng/ml

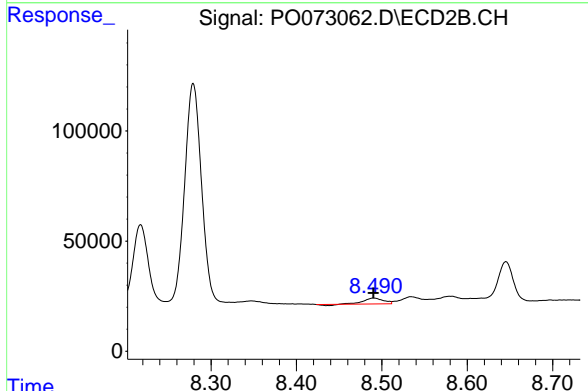


#42 AR-1268-2
 R.T.: 8.279 min
 Delta R.T.: -0.003 min
 Response: 1349830
 Conc: 266.40 ng/ml

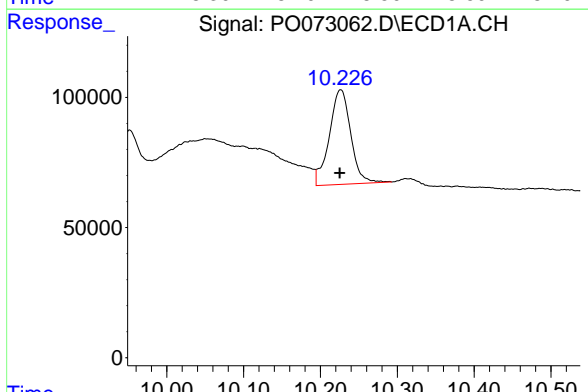


#43 AR-1268-3
 R.T.: 9.791 min
 Delta R.T.: 0.002 min
 Response: 615303
 Conc: 110.16 ng/ml

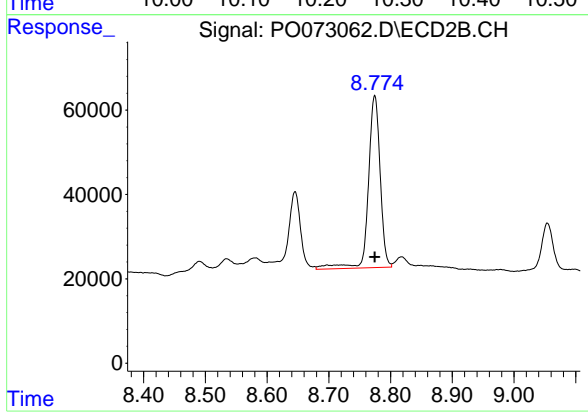
Instrument :
 ECD_O
 ClientSampleId :



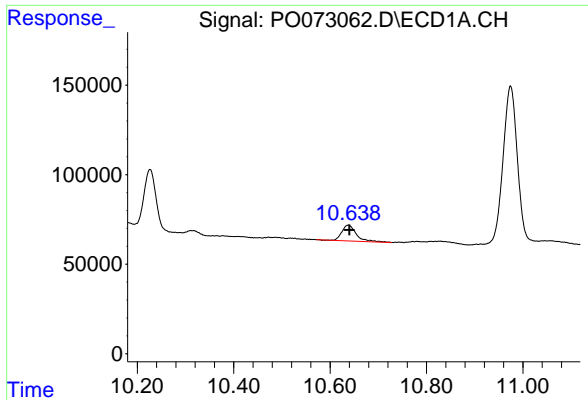
#43 AR-1268-3
 R.T.: 8.490 min
 Delta R.T.: 0.000 min
 Response: 41558
 Conc: 9.43 ng/ml



#44 AR-1268-4
 R.T.: 10.226 min
 Delta R.T.: 0.001 min
 Response: 699604
 Conc: 301.68 ng/ml



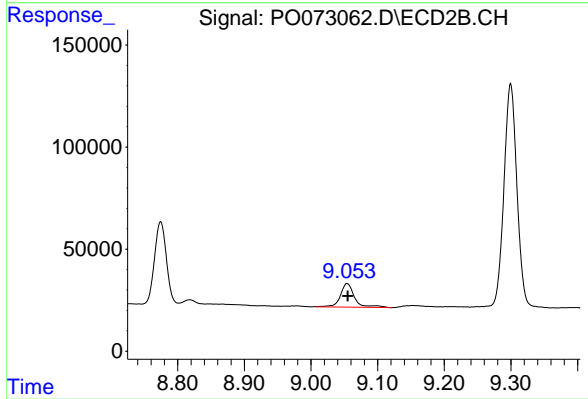
#44 AR-1268-4
 R.T.: 8.774 min
 Delta R.T.: 0.000 min
 Response: 541981
 Conc: 281.46 ng/ml



#45 AR-1268-5

R.T.: 10.638 min
Delta R.T.: -0.002 min
Response: 184468
Conc: 11.41 ng/ml

Instrument :
ECD_O
ClientSampleId :



#45 AR-1268-5

R.T.: 9.054 min
Delta R.T.: 0.000 min
Response: 171239
Conc: 13.15 ng/ml