

Data Path : Z:\pestpcbsrv\HPCHEM1\ECD_0\Data\PO110420\
 Data File : PO073064.D
 Signal(s) : Signal #1: ECD1A.CH Signal #2: ECD2B.CH
 Acq On : 04 Nov 2020 10:10
 Operator : DD\AJ
 Sample : I.BLK
 Misc :
 ALS Vial : 2 Sample Multiplier: 1

Instrument :
 ECD_0
 ClientSampleId :
 I.BLK

Integration File signal 1: autoint1.e
 Integration File signal 2: autoint2.e
 Quant Time: Nov 05 05:47:07 2020
 Quant Method : Z:\pestpcbsrv\HPCHEM1\ECD_0\methods\PO110420.M
 Quant Title : GC EXTRACTABLES
 QLast Update : Thu Nov 05 05:38:46 2020
 Response via : Initial Calibration
 Integrator: ChemStation 6890 Scale Mode: Small noise peaks clipped

Volume Inj. : 2 µl
 Signal #1 Phase : ZB-MR1 Signal #2 Phase: ZB-MR2
 Signal #1 Info : 30Mx0.32mmx 0.50µ Signal #2 Info : 30M x 0.32mm x 0.25µm

Compound	RT#1	RT#2	Resp#1	Resp#2	ng/ml	ng/ml

System Monitoring Compounds						
1) SA Tetrachlo...	4.947	4.023	952693	724388	17.976	20.272
2) SA Decachlor...	10.973	9.298	803242	666783	19.410	19.986
Target Compounds						
28) L6 AR-1254-3	7.812f	0.000	25051	0	6.966	N.D. #
30) L6 AR-1254-5	8.538f	0.000	9949	0	3.437	N.D. #
32) L7 AR-1260-2	8.243	0.000	91829	0	33.896	N.D. #
34) L7 AR-1260-4	8.841	0.000	61774	0	27.062	N.D. #
43) L9 AR-1268-3	9.793	0.000	146811	0	26.284	N.D. #

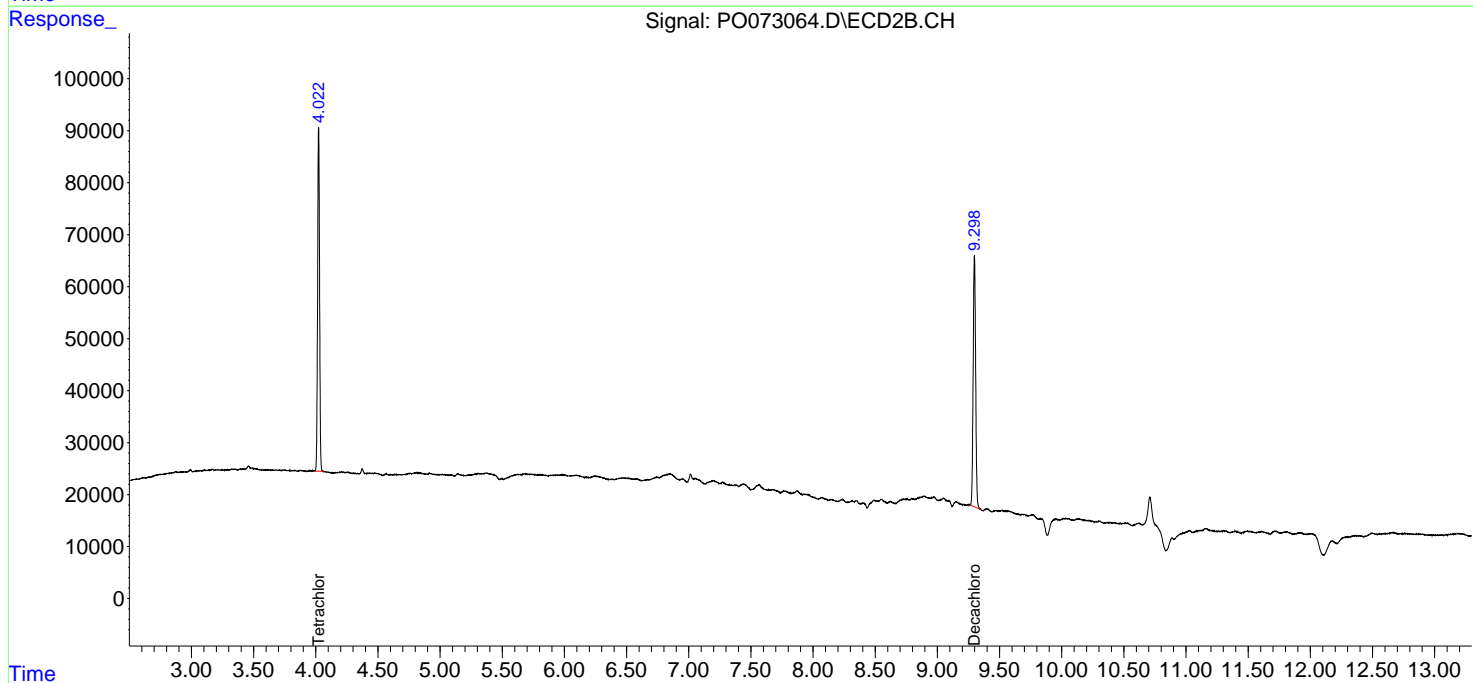
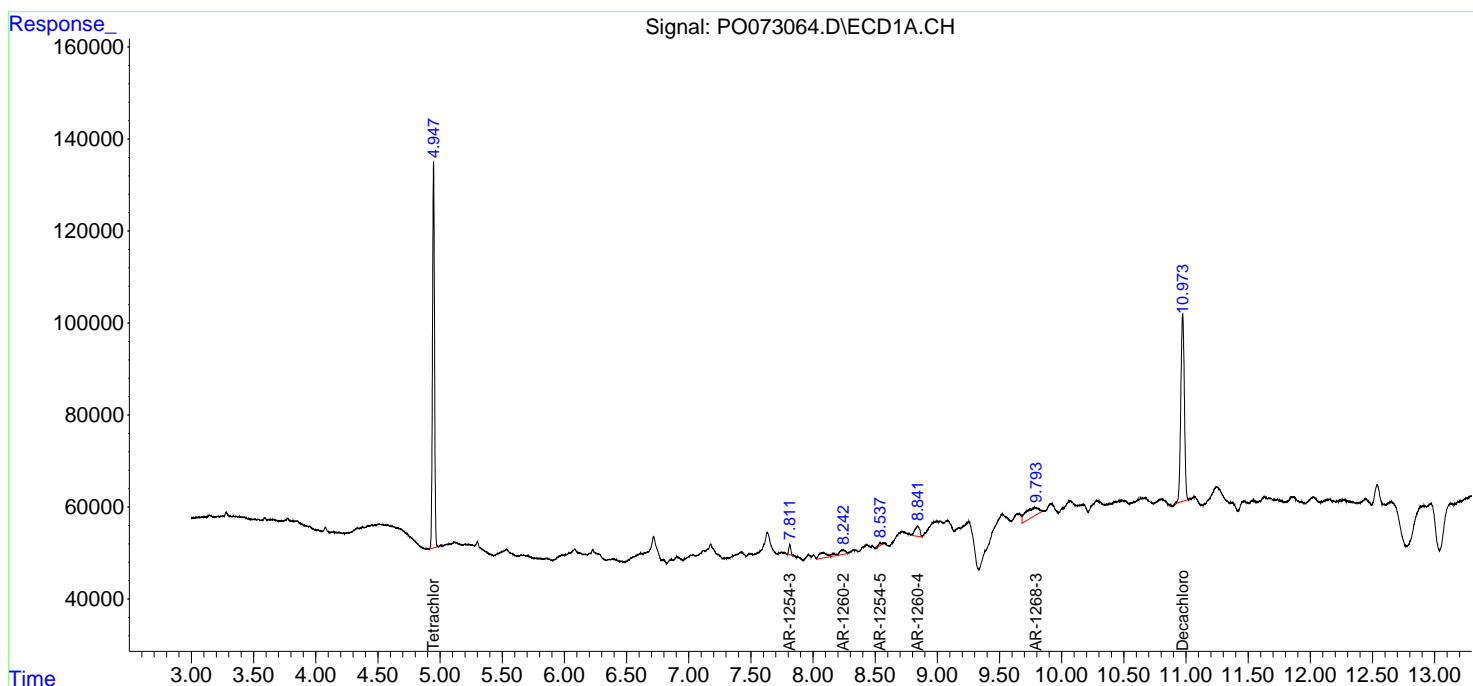
(f)=RT Delta > 1/2 Window (#)=Amounts differ by > 25% (m)=manual int.

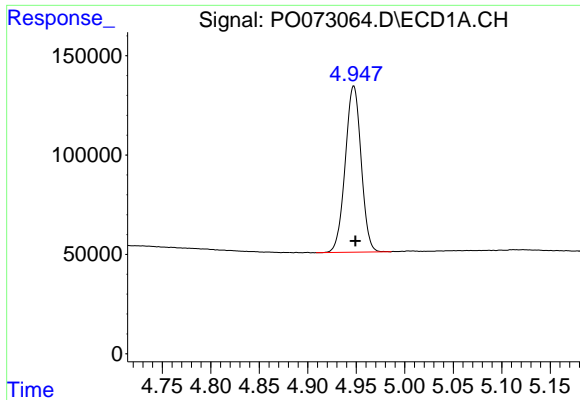
Data Path : Z:\pestpcbsrv\HPCHEM1\ECD_0\Data\PO110420\
 Data File : PO073064.D
 Signal(s) : Signal #1: ECD1A.CH Signal #2: ECD2B.CH
 Acq On : 04 Nov 2020 10:10
 Operator : DD\AJ
 Sample : I.BLK
 Misc :
 ALS Vial : 2 Sample Multiplier: 1

Instrument :
 ECD_O
 ClientSampled :
 I.BLK

Integration File signal 1: autoint1.e
 Integration File signal 2: autoint2.e
 Quant Time: Nov 05 05:47:07 2020
 Quant Method : Z:\pestpcbsrv\HPCHEM1\ECD_0\methods\PO110420.M
 Quant Title : GC EXTRACTABLES
 QLast Update : Thu Nov 05 05:38:46 2020
 Response via : Initial Calibration
 Integrator: ChemStation 6890 Scale Mode: Small noise peaks clipped

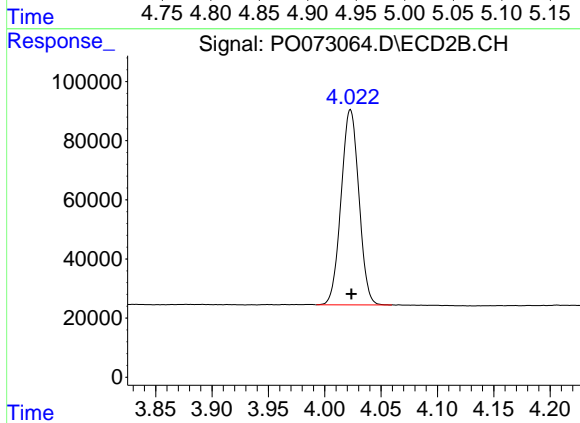
Volume Inj. : 2 µl
 Signal #1 Phase : ZB-MR1 Signal #2 Phase: ZB-MR2
 Signal #1 Info : 30Mx0.32mmx 0.50µ Signal #2 Info : 30M x 0.32mm x 0.25µm



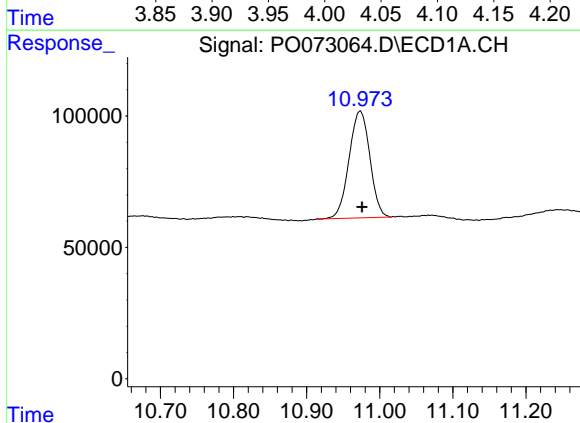


#1 Tetrachloro-m-xylene
 R.T.: 4.947 min
 Delta R.T.: -0.002 min
 Response: 952693
 Conc: 17.98 ng/ml

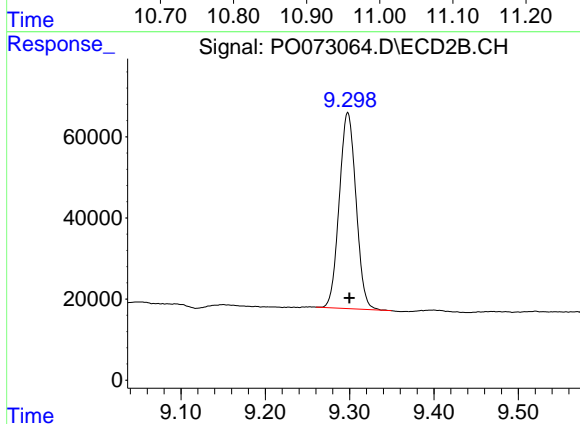
Instrument :
 ECD_O
 ClientSampleId :
 I.BLK



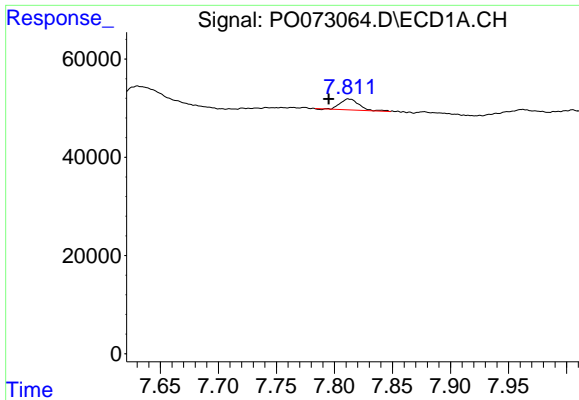
#1 Tetrachloro-m-xylene
 R.T.: 4.023 min
 Delta R.T.: 0.000 min
 Response: 724388
 Conc: 20.27 ng/ml



#2 Decachlorobiphenyl
 R.T.: 10.973 min
 Delta R.T.: -0.003 min
 Response: 803242
 Conc: 19.41 ng/ml



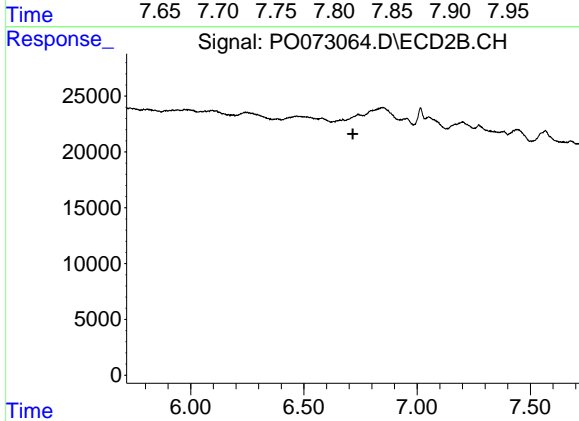
#2 Decachlorobiphenyl
 R.T.: 9.298 min
 Delta R.T.: -0.002 min
 Response: 666783
 Conc: 19.99 ng/ml



#28 AR-1254-3

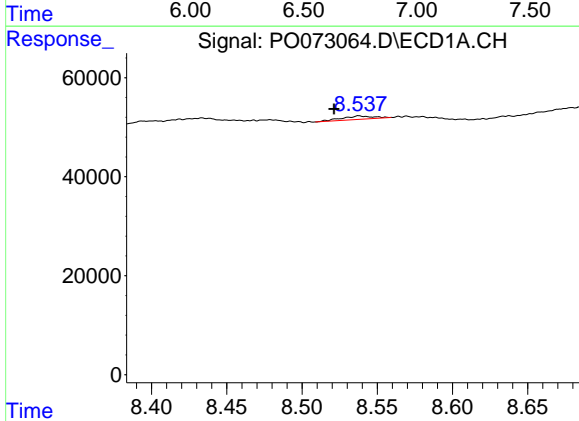
R.T.: 7.812 min
 Delta R.T.: 0.017 min
 Response: 25051
 Conc: 6.97 ng/ml

Instrument :
 ECD_O
 ClientSampled :
 I.BLK



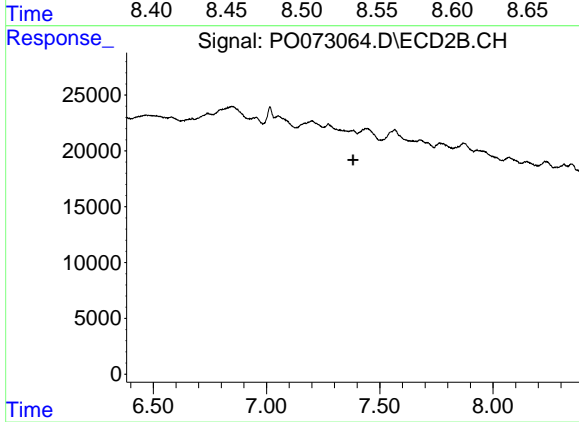
#28 AR-1254-3

R.T.: 0.000 min
 Exp R.T. : 6.717 min
 Response: 0
 Conc: N.D.



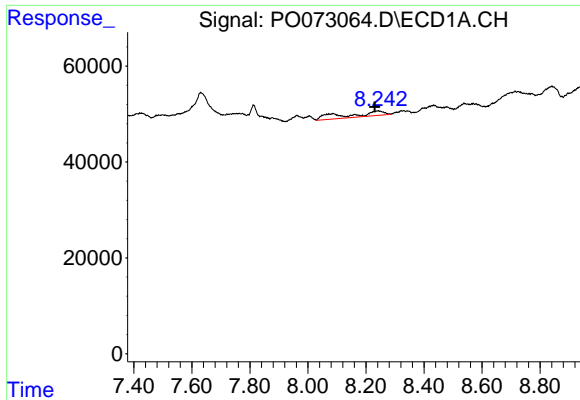
#30 AR-1254-5

R.T.: 8.538 min
 Delta R.T.: 0.017 min
 Response: 9949
 Conc: 3.44 ng/ml



#30 AR-1254-5

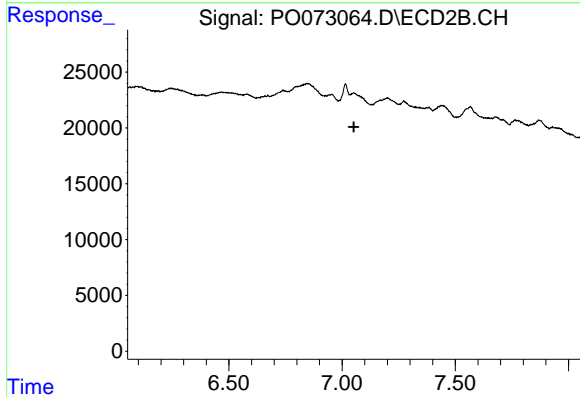
R.T.: 0.000 min
 Exp R.T. : 7.382 min
 Response: 0
 Conc: N.D.



#32 AR-1260-2

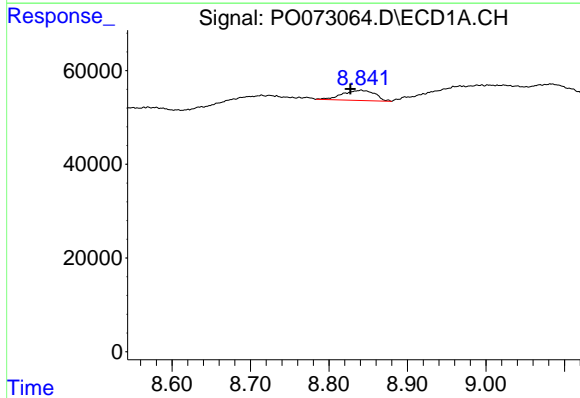
R.T.: 8.243 min
 Delta R.T.: 0.013 min
 Response: 91829
 Conc: 33.90 ng/ml

Instrument :
 ECD_O
 ClientSampleId :
 I.BLK



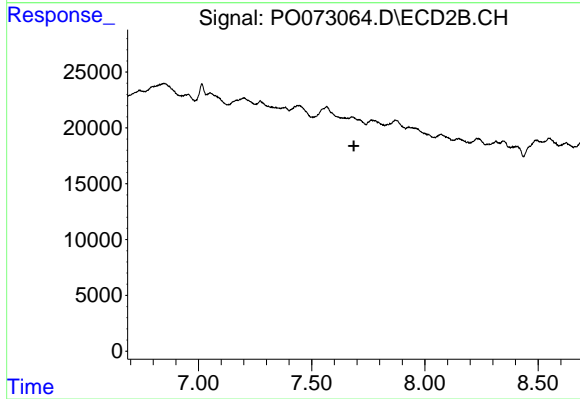
#32 AR-1260-2

R.T.: 0.000 min
 Exp R.T. : 7.052 min
 Response: 0
 Conc: N.D.



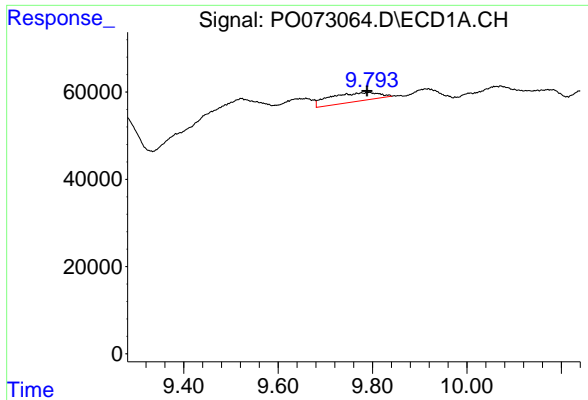
#34 AR-1260-4

R.T.: 8.841 min
 Delta R.T.: 0.013 min
 Response: 61774
 Conc: 27.06 ng/ml



#34 AR-1260-4

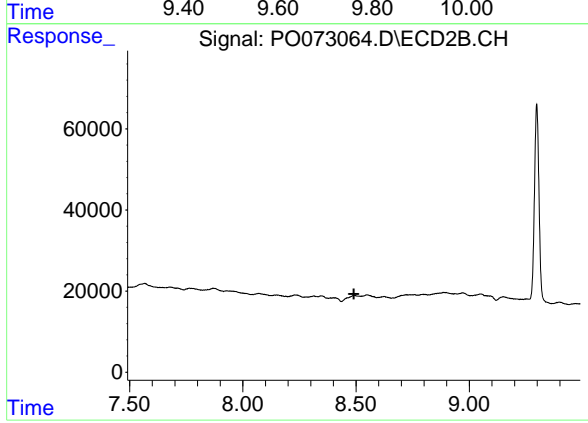
R.T.: 0.000 min
 Exp R.T. : 7.687 min
 Response: 0
 Conc: N.D.



#43 AR-1268-3

R.T.: 9.793 min
Delta R.T.: 0.004 min
Response: 146811
Conc: 26.28 ng/ml

Instrument :
ECD_O
ClientSampleId :
I.BLK



#43 AR-1268-3

R.T.: 0.000 min
Exp R.T. : 8.490 min
Response: 0
Conc: N.D.