

Data Path : Z:\pestpcbsrv\HPCHEM1\ECD_0\Data\PO110420\
 Data File : PO073067.D
 Signal(s) : Signal #1: ECD1A.CH Signal #2: ECD2B.CH
 Acq On : 04 Nov 2020 11:01
 Operator : DD\AJ
 Sample : AR1660ICC500
 Misc :
 ALS Vial : 5 Sample Multiplier: 1

Instrument :
 ECD_0
 ClientSampleId :
 AR1660ICC500

Integration File signal 1: autoint1.e
 Integration File signal 2: autoint2.e
 Quant Time: Nov 04 11:38:26 2020
 Quant Method : Z:\pestpcbsrv\HPCHEM1\ECD_0\methods\PO110420.M
 Quant Title : GC EXTRACTABLES
 QLast Update : Wed Nov 04 11:38:03 2020
 Response via : Initial Calibration
 Integrator: ChemStation 6890 Scale Mode: Small noise peaks clipped

Volume Inj. : 2 µl
 Signal #1 Phase : ZB-MR2 Signal #2 Phase: ZB-MR2
 Signal #1 Info : 30Mx0.32mmx 0.50µ Signal #2 Info : 30M x 0.32mm x 0.25µm

Compound	RT#1	RT#2	Resp#1	Resp#2	ng/ml	ng/ml

System Monitoring Compounds						
1) SA Tetrachlo...	4.950	4.024	2600688	1744123	50.000	50.000
2) SA Decachlor...	10.977	9.301	2028858	1618920	50.000	50.000
Target Compounds						
3) L1 AR-1016-1	6.273	5.276	967304	697643	500.000	500.000
4) L1 AR-1016-2	6.297	5.296	1324683	950753	500.000	500.000
5) L1 AR-1016-3	6.363	5.486	804399	466240	500.000	500.000
6) L1 AR-1016-4	6.470	5.539	656168	406203	500.000	500.000
7) L1 AR-1016-5	6.786	5.766	586689	524424	500.000	500.000
31) L7 AR-1260-1	7.965	6.856	1048886	953495	500.000	500.000
32) L7 AR-1260-2	8.232	7.053	1347985	1189322	500.000	500.000
33) L7 AR-1260-3	8.597	7.207	1045117	1065509	500.000	500.000
34) L7 AR-1260-4	8.828	7.688	1097682	901389	500.000	500.000
35) L7 AR-1260-5	9.155	7.933	2180234	2089472	500.000	500.000

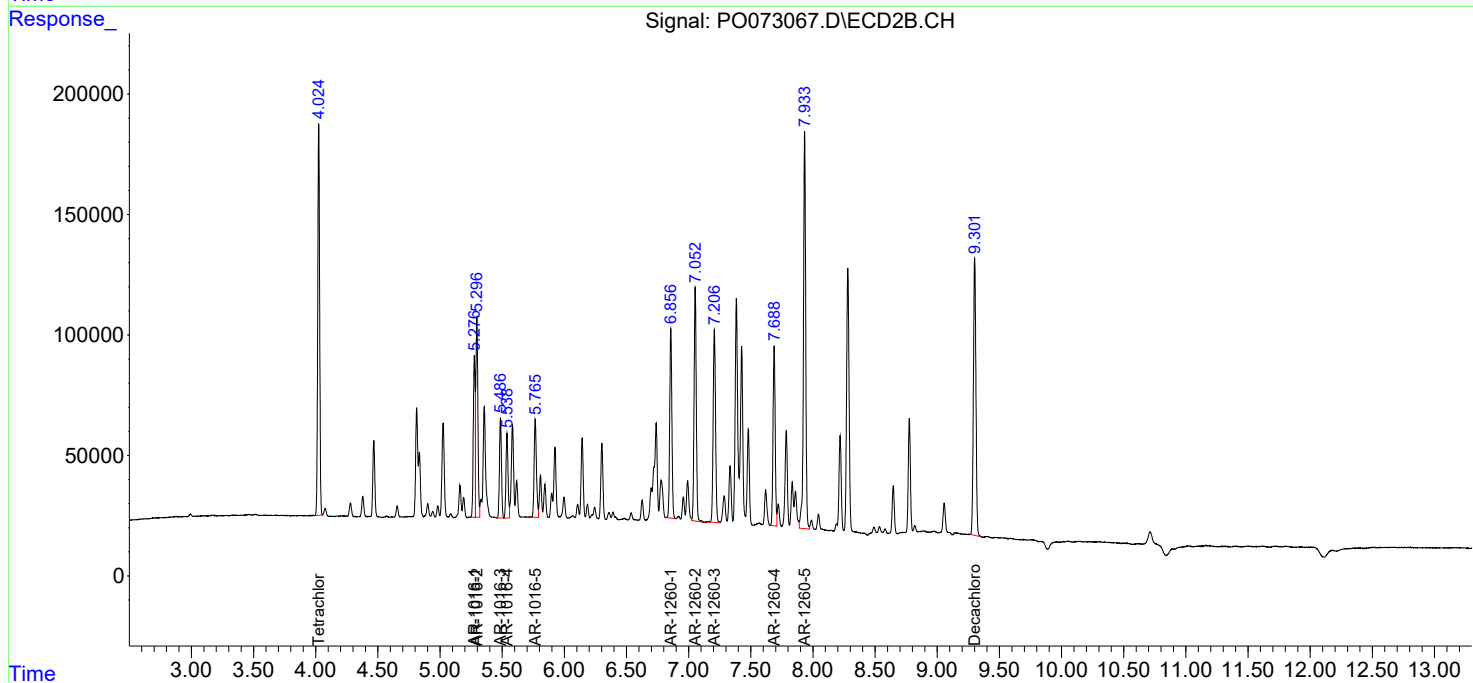
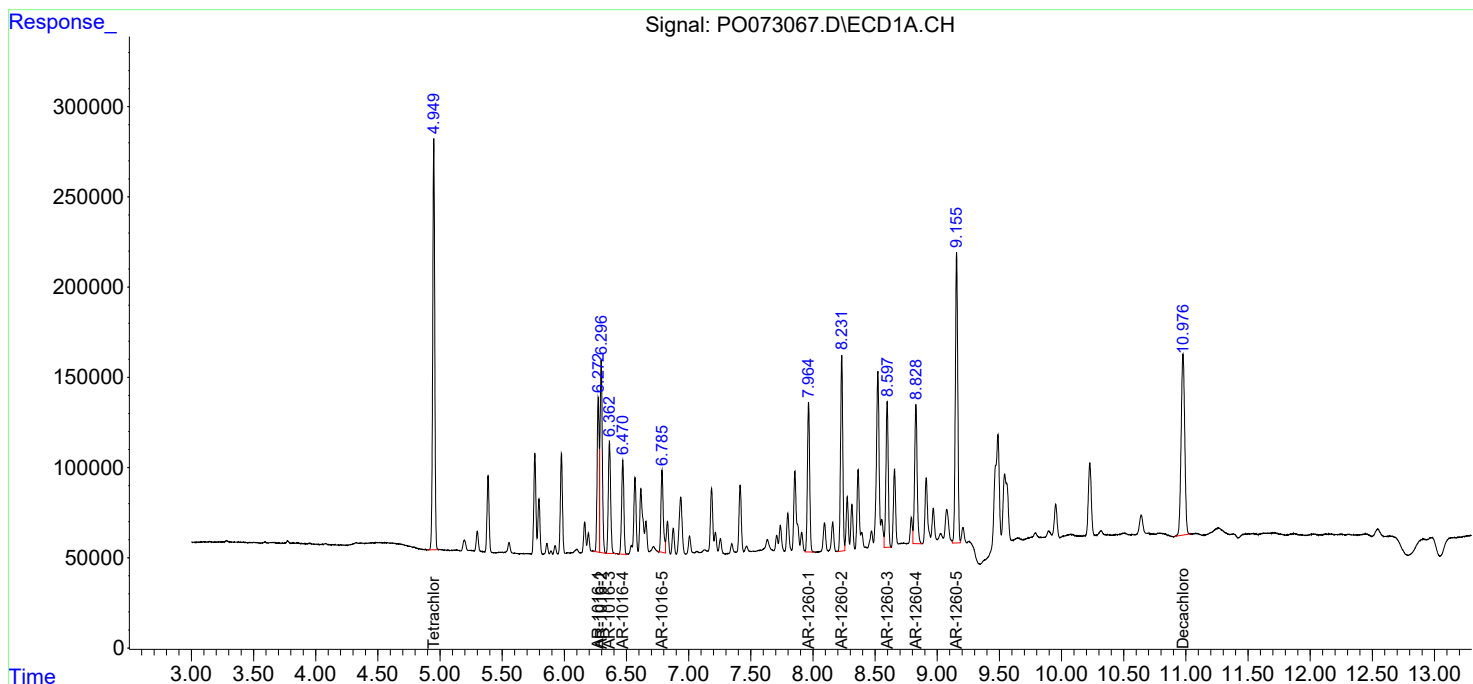
(f)=RT Delta > 1/2 Window (#)=Amounts differ by > 25% (m)=manual int.

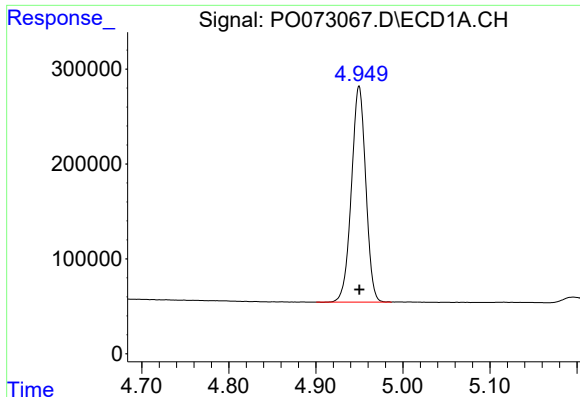
Data Path : Z:\pestpcbsrv\HPCHEM1\ECD_O\Data\PO110420\
 Data File : PO073067.D
 Signal(s) : Signal #1: ECD1A.CH Signal #2: ECD2B.CH
 Acq On : 04 Nov 2020 11:01
 Operator : DD\AJ
 Sample : AR1660ICC500
 Misc :
 ALS Vial : 5 Sample Multiplier: 1

Instrument :
 ECD_O
 ClientSampled :
 AR1660ICC500

Integration File signal 1: autoint1.e
 Integration File signal 2: autoint2.e
 Quant Time: Nov 04 11:38:26 2020
 Quant Method : Z:\pestpcbsrv\HPCHEM1\ECD_O\methods\PO110420.M
 Quant Title : GC EXTRACTABLES
 QLast Update : Wed Nov 04 11:38:03 2020
 Response via : Initial Calibration
 Integrator: ChemStation 6890 Scale Mode: Small noise peaks clipped

Volume Inj. : 2 µl
 Signal #1 Phase : ZB-MR1 Signal #2 Phase: ZB-MR2
 Signal #1 Info : 30Mx0.32mmx 0.50µ Signal #2 Info : 30M x 0.32mm x 0.25µm

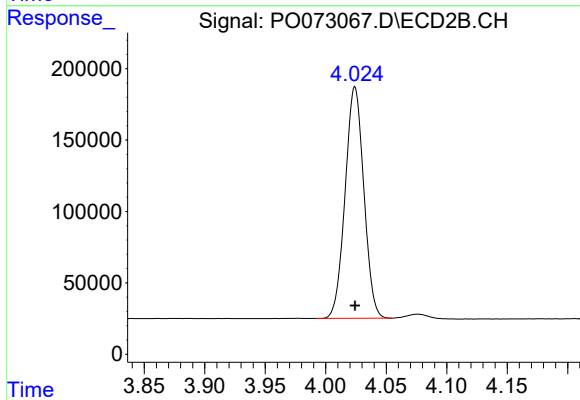




#1 Tetrachloro-m-xylene

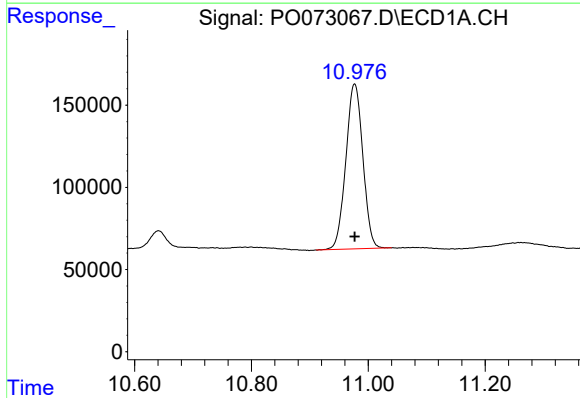
R.T.: 4.950 min
Delta R.T.: 0.000 min
Response: 2600688
Conc: 50.00 ng/ml

Instrument :
ECD_O
ClientSampleId :
AR1660ICC500



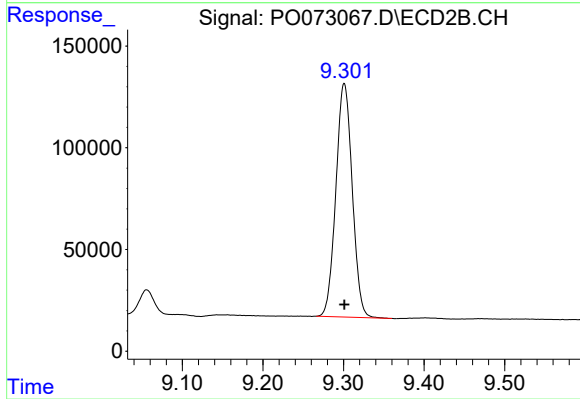
#1 Tetrachloro-m-xylene

R.T.: 4.024 min
Delta R.T.: 0.000 min
Response: 1744123
Conc: 50.00 ng/ml



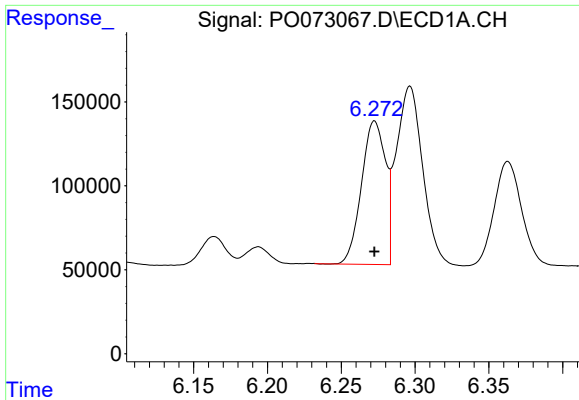
#2 Decachlorobiphenyl

R.T.: 10.977 min
Delta R.T.: 0.000 min
Response: 2028858
Conc: 50.00 ng/ml



#2 Decachlorobiphenyl

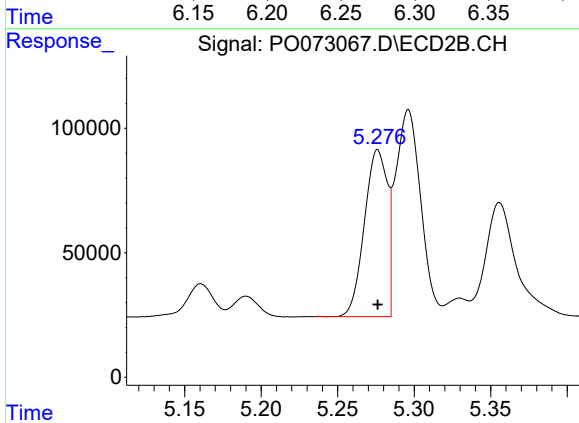
R.T.: 9.301 min
Delta R.T.: 0.000 min
Response: 1618920
Conc: 50.00 ng/ml



#3 AR-1016-1

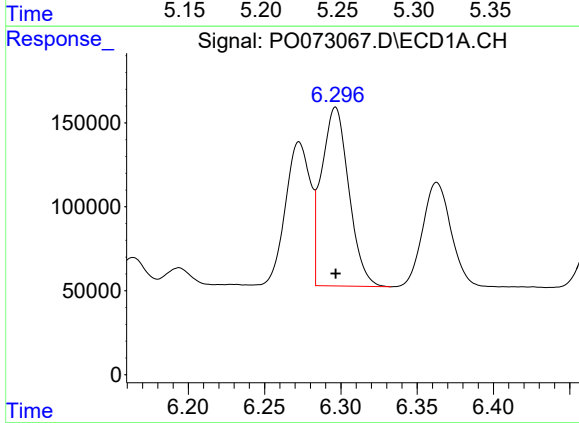
R.T.: 6.273 min
 Delta R.T.: 0.000 min
 Response: 967304
 Conc: 500.00 ng/ml

Instrument :
 ECD_O
 ClientSampled :
 AR1660ICC500



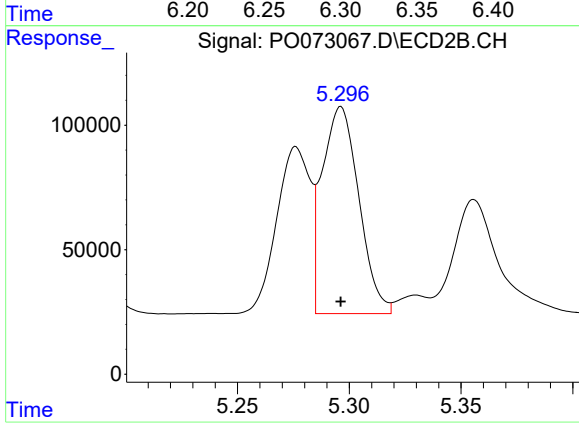
#3 AR-1016-1

R.T.: 5.276 min
 Delta R.T.: 0.000 min
 Response: 697643
 Conc: 500.00 ng/ml



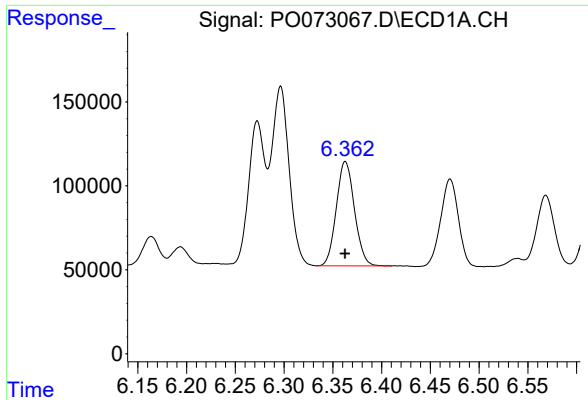
#4 AR-1016-2

R.T.: 6.297 min
 Delta R.T.: 0.000 min
 Response: 1324683
 Conc: 500.00 ng/ml



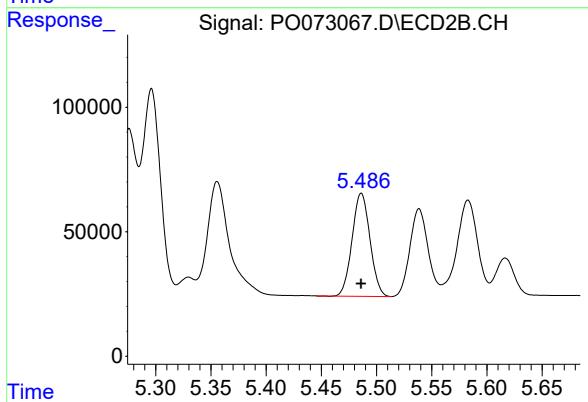
#4 AR-1016-2

R.T.: 5.296 min
 Delta R.T.: 0.000 min
 Response: 950753
 Conc: 500.00 ng/ml

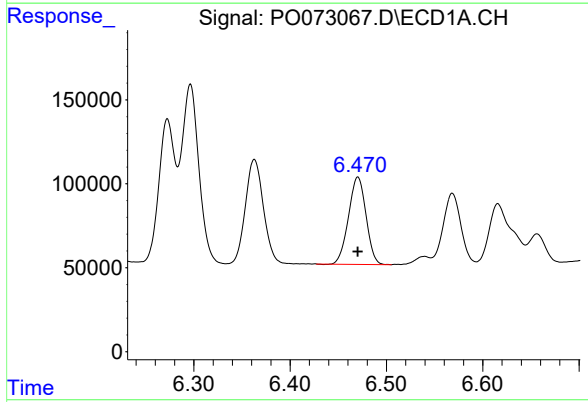


#5 AR-1016-3
R.T.: 6.363 min
Delta R.T.: 0.000 min
Response: 804399
Conc: 500.00 ng/ml

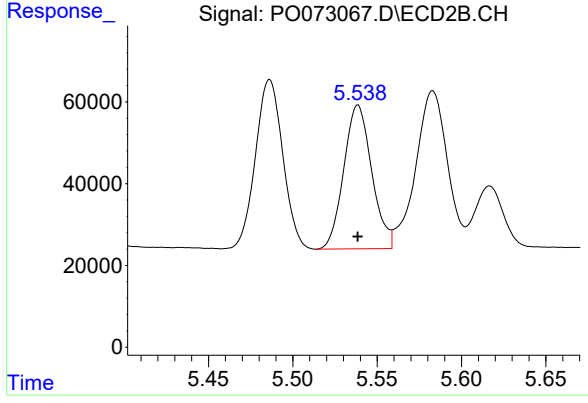
Instrument :
ECD_O
ClientSampleId :
AR1660ICC500



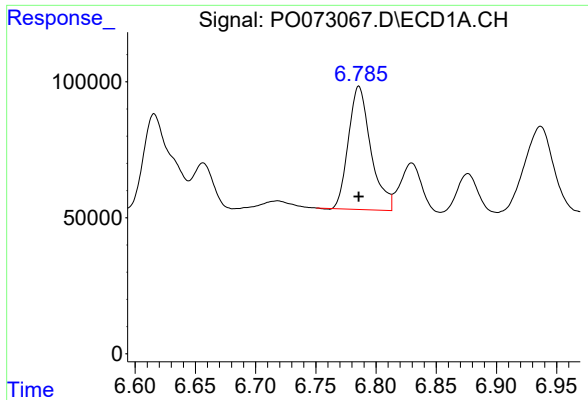
#5 AR-1016-3
R.T.: 5.486 min
Delta R.T.: 0.000 min
Response: 466240
Conc: 500.00 ng/ml



#6 AR-1016-4
R.T.: 6.470 min
Delta R.T.: 0.000 min
Response: 656168
Conc: 500.00 ng/ml



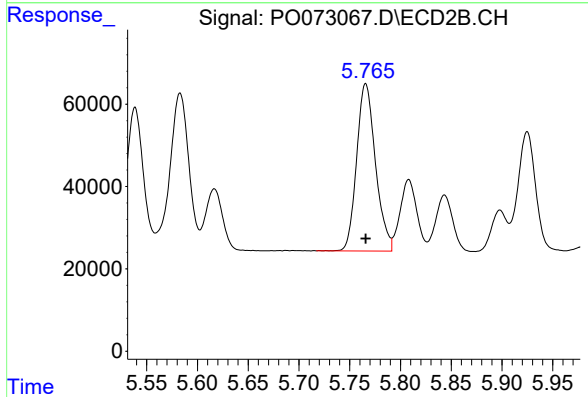
#6 AR-1016-4
R.T.: 5.539 min
Delta R.T.: 0.000 min
Response: 406203
Conc: 500.00 ng/ml



#7 AR-1016-5

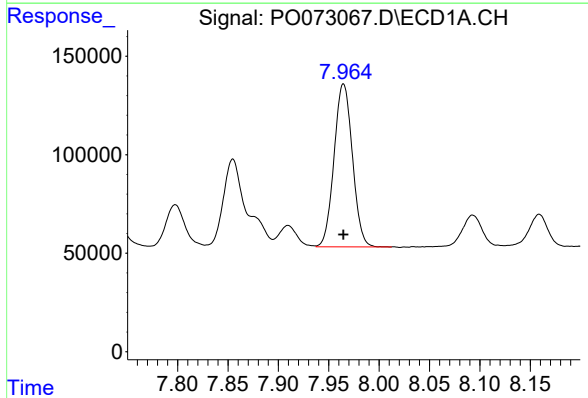
R.T.: 6.786 min
 Delta R.T.: 0.000 min
 Response: 586689
 Conc: 500.00 ng/ml

Instrument :
 ECD_O
 ClientSampled :
 AR1660ICC500



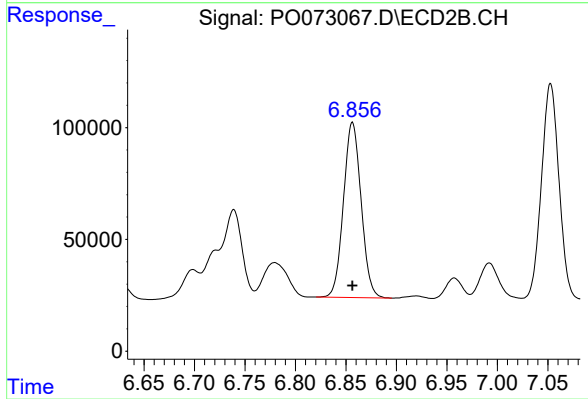
#7 AR-1016-5

R.T.: 5.766 min
 Delta R.T.: 0.000 min
 Response: 524424
 Conc: 500.00 ng/ml



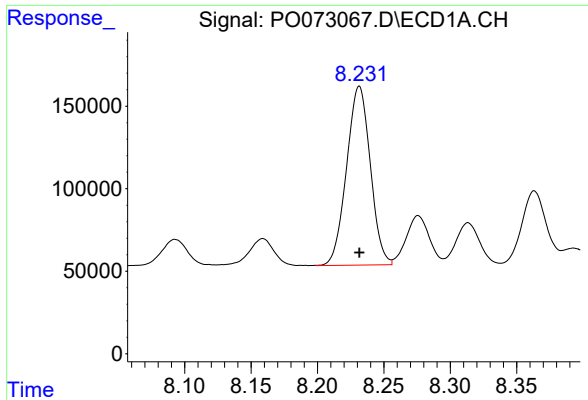
#31 AR-1260-1

R.T.: 7.965 min
 Delta R.T.: 0.000 min
 Response: 1048886
 Conc: 500.00 ng/ml



#31 AR-1260-1

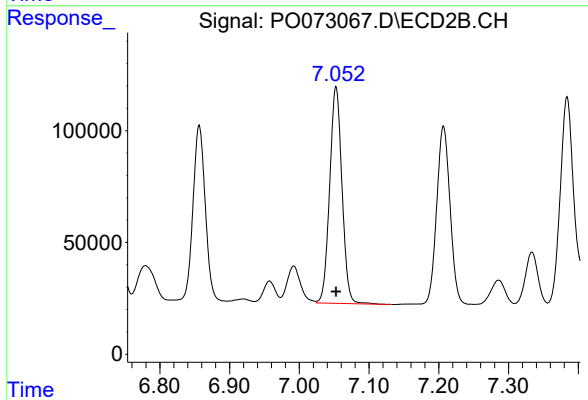
R.T.: 6.856 min
 Delta R.T.: 0.000 min
 Response: 953495
 Conc: 500.00 ng/ml



#32 AR-1260-2

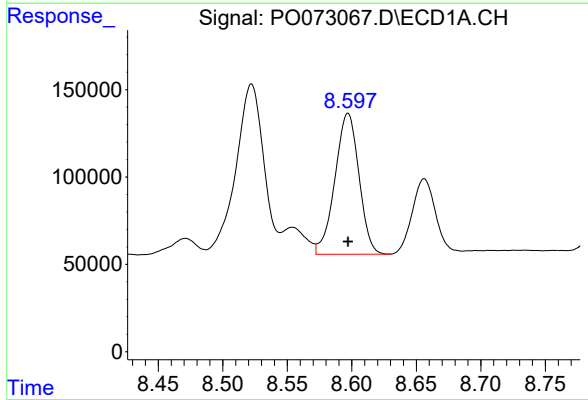
R.T.: 8.232 min
 Delta R.T.: 0.000 min
 Response: 1347985
 Conc: 500.00 ng/ml

Instrument :
 ECD_O
 ClientSampleId :
 AR1660ICC500



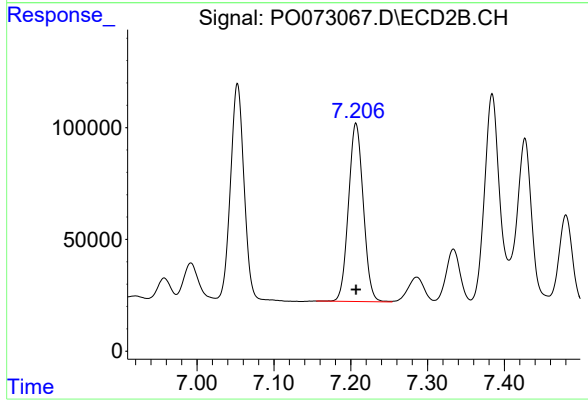
#32 AR-1260-2

R.T.: 7.053 min
 Delta R.T.: 0.000 min
 Response: 1189322
 Conc: 500.00 ng/ml



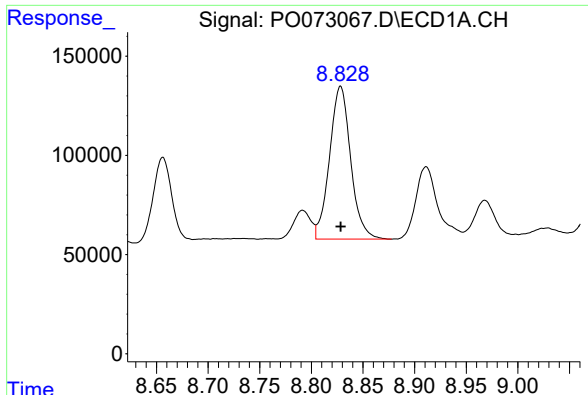
#33 AR-1260-3

R.T.: 8.597 min
 Delta R.T.: 0.000 min
 Response: 1045117
 Conc: 500.00 ng/ml



#33 AR-1260-3

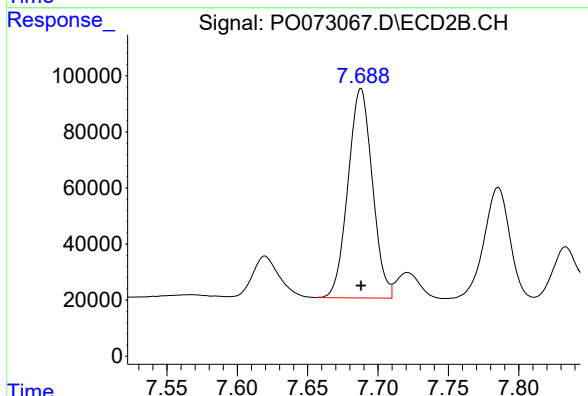
R.T.: 7.207 min
 Delta R.T.: 0.000 min
 Response: 1065509
 Conc: 500.00 ng/ml



#34 AR-1260-4

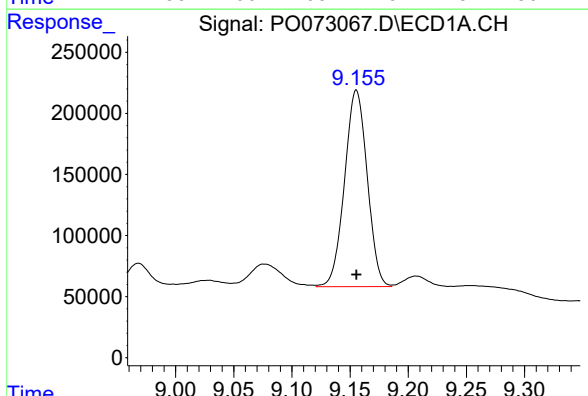
R.T.: 8.828 min
Delta R.T.: 0.000 min
Response: 1097682
Conc: 500.00 ng/ml

Instrument :
ECD_O
ClientSampled :
AR1660ICC500



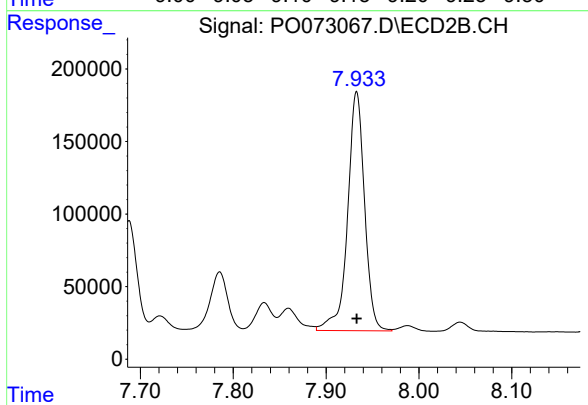
#34 AR-1260-4

R.T.: 7.688 min
Delta R.T.: 0.000 min
Response: 901389
Conc: 500.00 ng/ml



#35 AR-1260-5

R.T.: 9.155 min
Delta R.T.: 0.000 min
Response: 2180234
Conc: 500.00 ng/ml



#35 AR-1260-5

R.T.: 7.933 min
Delta R.T.: 0.000 min
Response: 2089472
Conc: 500.00 ng/ml