

Data Path : Z:\pestpcbsrv\HPCHEM1\ECD_0\Data\PO110420\
 Data File : PO073071.D
 Signal(s) : Signal #1: ECD1A.CH Signal #2: ECD2B.CH
 Acq On : 04 Nov 2020 12:11
 Operator : DD\AJ
 Sample : AR1221ICC750
 Misc :
 ALS Vial : 9 Sample Multiplier: 1

Instrument :
 ECD_0
 ClientSampleId :
 AR1221ICC750

Integration File signal 1: autoint1.e
 Integration File signal 2: autoint2.e
 Quant Time: Nov 04 13:06:29 2020
 Quant Method : Z:\pestpcbsrv\HPCHEM1\ECD_0\methods\PO110420.M
 Quant Title : GC EXTRACTABLES
 QLast Update : Wed Nov 04 13:05:10 2020
 Response via : Initial Calibration
 Integrator: ChemStation 6890 Scale Mode: Small noise peaks clipped

Volume Inj. : 2 µl
 Signal #1 Phase : ZB-MR1 Signal #2 Phase: ZB-MR2
 Signal #1 Info : 30Mx0.32mmx 0.50µ Signal #2 Info : 30M x 0.32mm x 0.25µm

Compound	RT#1	RT#2	Resp#1	Resp#2	ng/ml	ng/ml

System Monitoring Compounds						
1) SA Tetrachlo...	4.950	4.023	4201306	2694460	73.611	73.570
2) SA Decachlor...	10.976	9.299	3065676	2469169	70.048	70.895
Target Compounds						
8) L2 AR-1221-1	5.200	4.280	483830	334885	717.549	719.472
9) L2 AR-1221-2	5.299	4.378	364581	250306	715.384	716.024
10) L2 AR-1221-3	5.386	4.467	1089283	747893	709.396	703.484

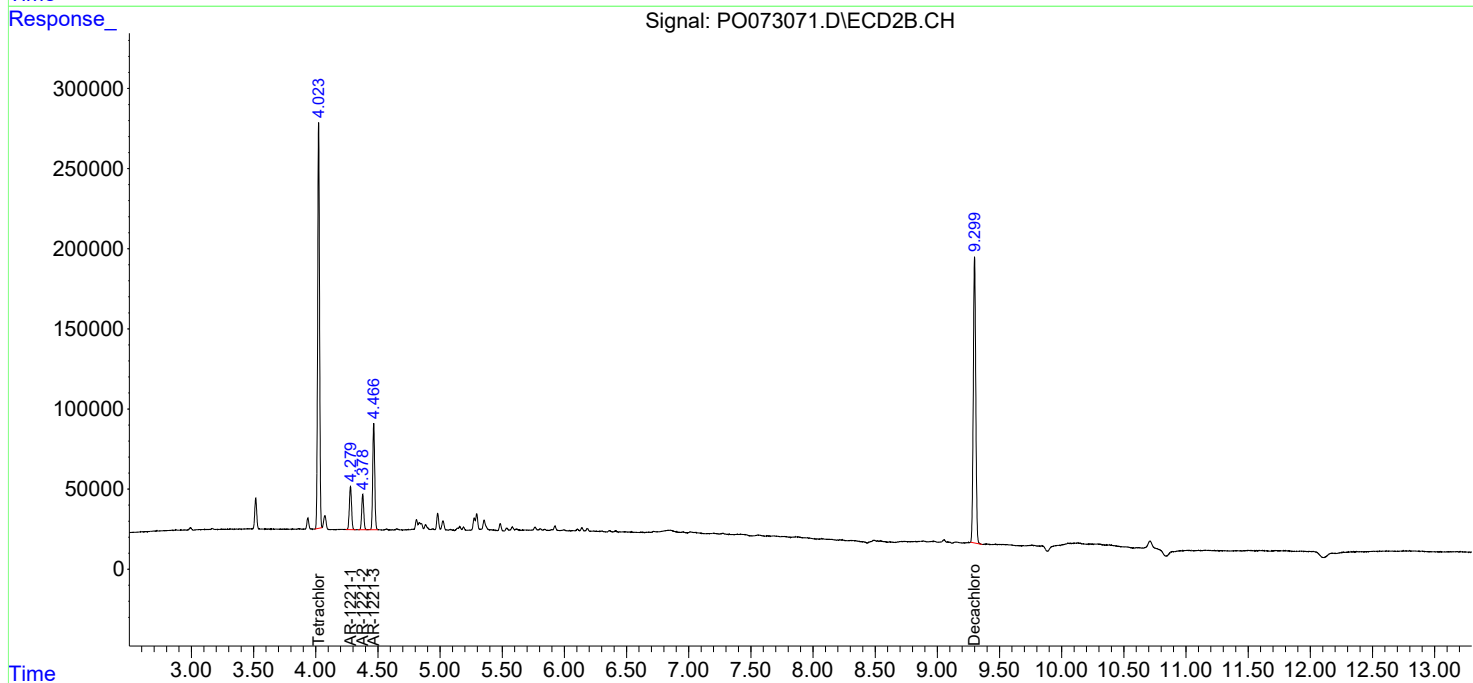
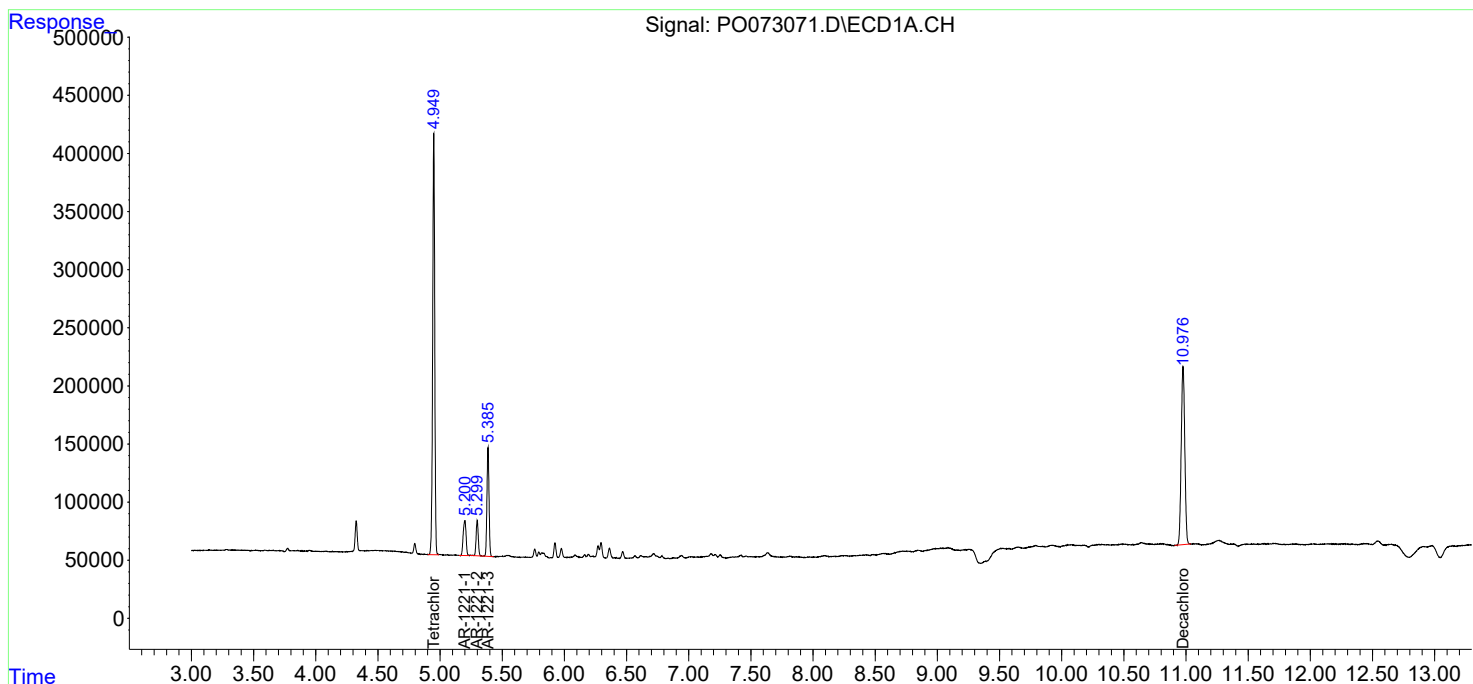
(f)=RT Delta > 1/2 Window (#)=Amounts differ by > 25% (m)=manual int.

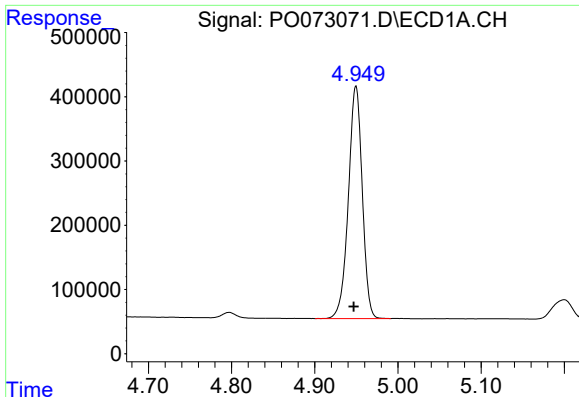
Data Path : Z:\pestpcbsrv\HPCHEM1\ECD_0\Data\PO110420\
 Data File : PO073071.D
 Signal(s) : Signal #1: ECD1A.CH Signal #2: ECD2B.CH
 Acq On : 04 Nov 2020 12:11
 Operator : DD\AJ
 Sample : AR1221ICC750
 Misc :
 ALS Vial : 9 Sample Multiplier: 1

Instrument :
 ECD_O
 ClientSampled :
 AR1221ICC750

Integration File signal 1: autoint1.e
 Integration File signal 2: autoint2.e
 Quant Time: Nov 04 13:06:29 2020
 Quant Method : Z:\pestpcbsrv\HPCHEM1\ECD_0\methods\PO110420.M
 Quant Title : GC EXTRACTABLES
 QLast Update : Wed Nov 04 13:05:10 2020
 Response via : Initial Calibration
 Integrator: ChemStation 6890 Scale Mode: Small noise peaks clipped

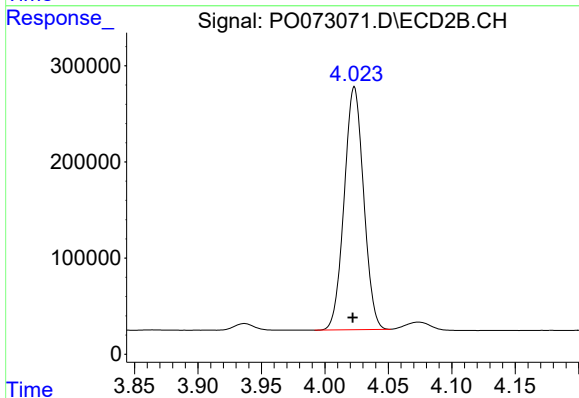
Volume Inj. : 2 µl
 Signal #1 Phase : ZB-MR1 Signal #2 Phase: ZB-MR2
 Signal #1 Info : 30Mx0.32mmx 0.50µ Signal #2 Info : 30M x 0.32mm x 0.25µm



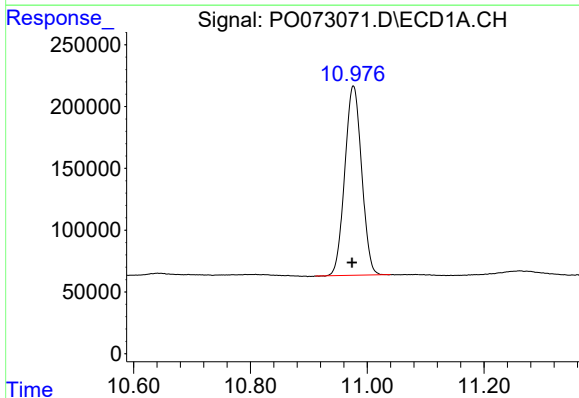


#1 Tetrachloro-m-xylene
 R.T.: 4.950 min
 Delta R.T.: 0.003 min
 Response: 4201306
 Conc: 73.61 ng/ml

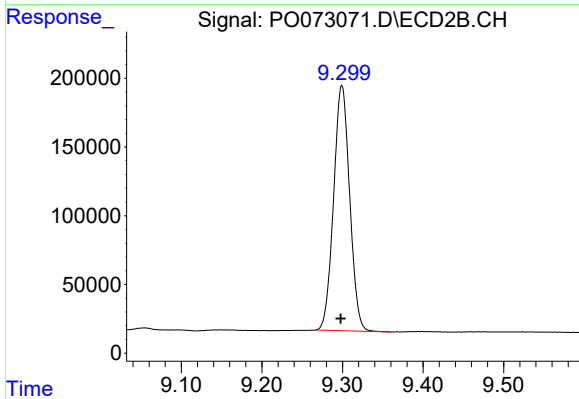
Instrument :
 ECD_O
 ClientSampleId :
 AR1221ICC750



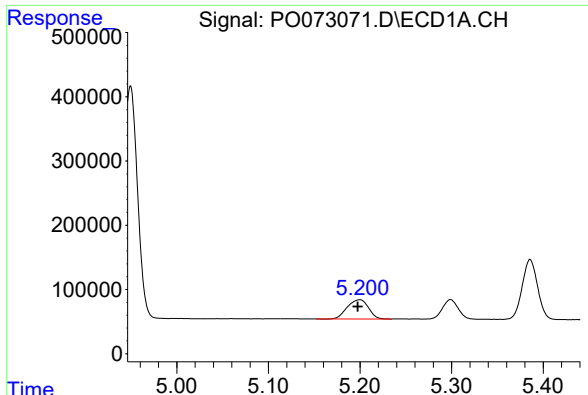
#1 Tetrachloro-m-xylene
 R.T.: 4.023 min
 Delta R.T.: 0.001 min
 Response: 2694460
 Conc: 73.57 ng/ml



#2 Decachlorobiphenyl
 R.T.: 10.976 min
 Delta R.T.: 0.002 min
 Response: 3065676
 Conc: 70.05 ng/ml

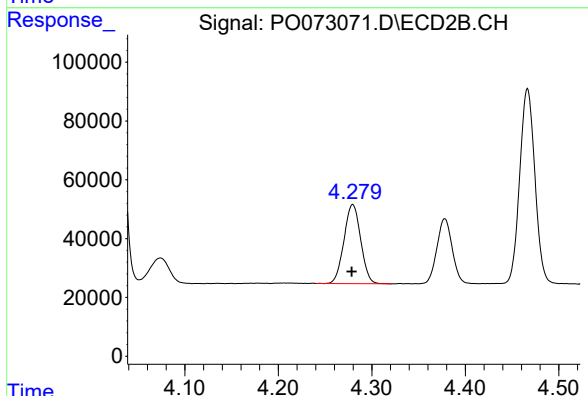


#2 Decachlorobiphenyl
 R.T.: 9.299 min
 Delta R.T.: 0.001 min
 Response: 2469169
 Conc: 70.89 ng/ml

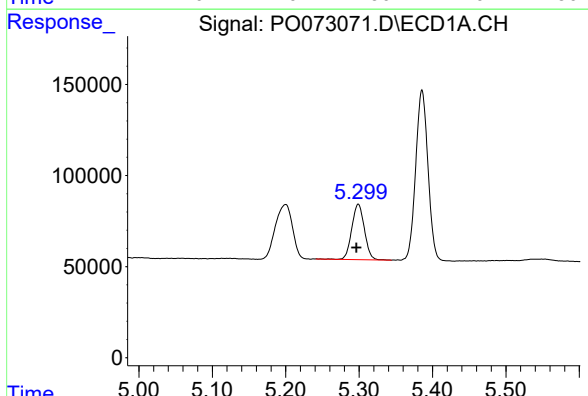


#8 AR-1221-1
 R.T.: 5.200 min
 Delta R.T.: 0.002 min
 Response: 483830
 Conc: 717.55 ng/ml

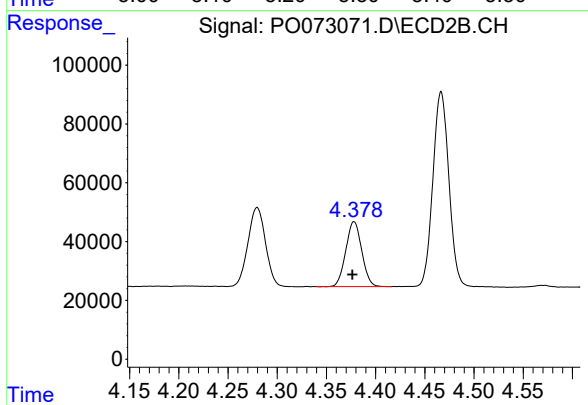
Instrument :
 ECD_O
 ClientSampled :
 AR1221ICC750



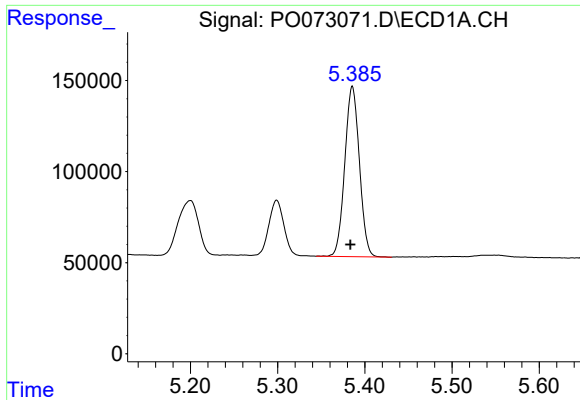
#8 AR-1221-1
 R.T.: 4.280 min
 Delta R.T.: 0.001 min
 Response: 334885
 Conc: 719.47 ng/ml



#9 AR-1221-2
 R.T.: 5.299 min
 Delta R.T.: 0.002 min
 Response: 364581
 Conc: 715.38 ng/ml



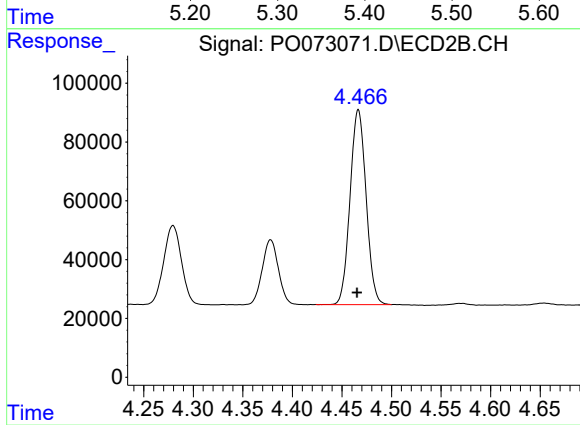
#9 AR-1221-2
 R.T.: 4.378 min
 Delta R.T.: 0.002 min
 Response: 250306
 Conc: 716.02 ng/ml



#10 AR-1221-3

R.T.: 5.386 min
Delta R.T.: 0.002 min
Response: 1089283
Conc: 709.40 ng/ml

Instrument :
ECD_O
ClientSampleId :
AR1221ICC750



#10 AR-1221-3

R.T.: 4.467 min
Delta R.T.: 0.001 min
Response: 747893
Conc: 703.48 ng/ml