

Data Path : Z:\pestpcbsrv\HPCHEM1\ECD\_0\Data\PO110420\  
 Data File : PO073072.D  
 Signal(s) : Signal #1: ECD1A.CH Signal #2: ECD2B.CH  
 Acq On : 04 Nov 2020 12:28  
 Operator : DD\AJ  
 Sample : AR1221ICC500  
 Misc :  
 ALS Vial : 10 Sample Multiplier: 1

Instrument :  
 ECD\_0  
 ClientSampleId :

Integration File signal 1: autoint1.e  
 Integration File signal 2: autoint2.e  
 Quant Time: Nov 04 13:05:24 2020  
 Quant Method : Z:\pestpcbsrv\HPCHEM1\ECD\_0\methods\PO110420.M  
 Quant Title : GC EXTRACTABLES  
 QLast Update : Wed Nov 04 13:05:10 2020  
 Response via : Initial Calibration  
 Integrator: ChemStation 6890 Scale Mode: Small noise peaks clipped

Volume Inj. : 2 µl  
 Signal #1 Phase : ZB-MR1 Signal #2 Phase: ZB-MR2  
 Signal #1 Info : 30Mx0.32mmx 0.50µ Signal #2 Info : 30M x 0.32mm x 0.25µm

Compound	RT#1	RT#2	Resp#1	Resp#2	ng/ml	ng/ml
-----						
System Monitoring Compounds						
1) SA Tetrachlo...	4.947	4.022	2853715	1831230	50.000	50.000
2) SA Decachlor...	10.974	9.298	2188278	1741437	50.000	50.000
Target Compounds						
8) L2 AR-1221-1	5.197	4.278	337141	232730	500.000	500.000
9) L2 AR-1221-2	5.296	4.377	254815	174789	500.000	500.000
10) L2 AR-1221-3	5.384	4.465	767754	531564	500.000	500.000
-----						

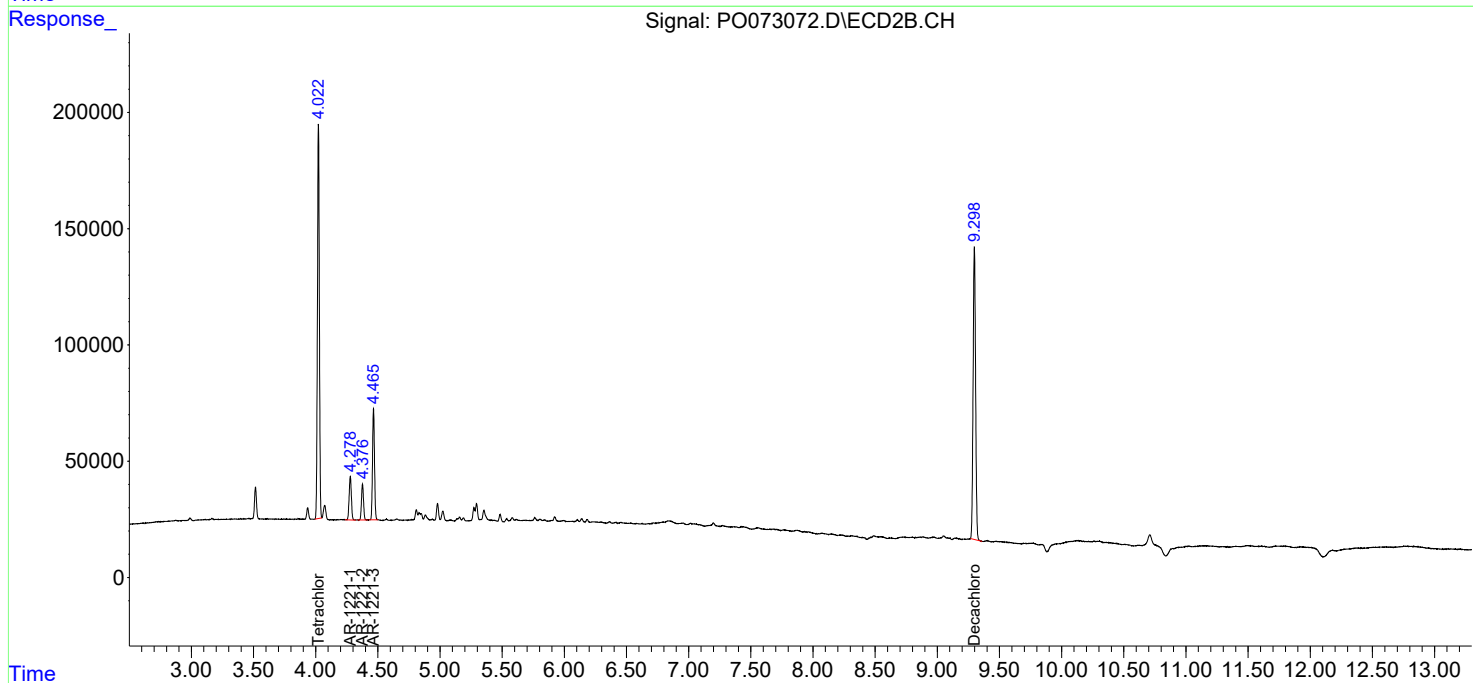
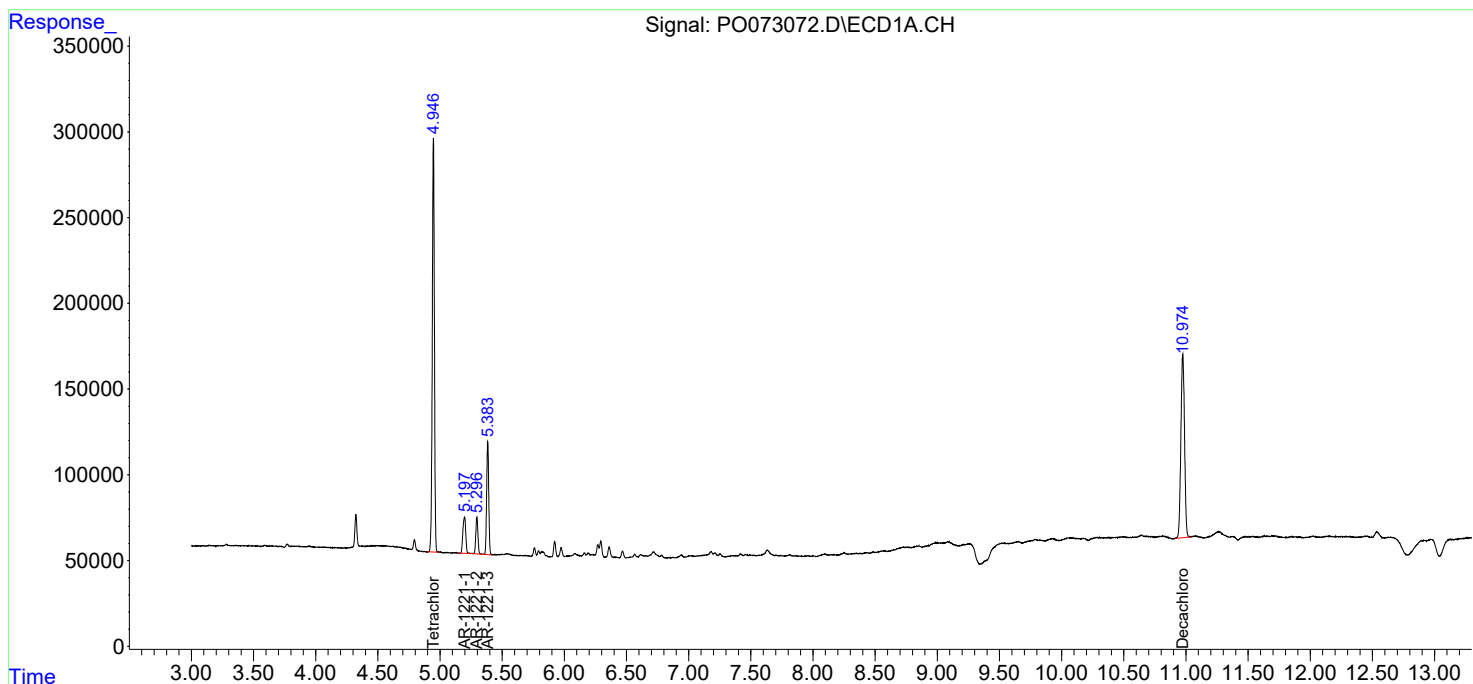
(f)=RT Delta > 1/2 Window (#)=Amounts differ by > 25% (m)=manual int.

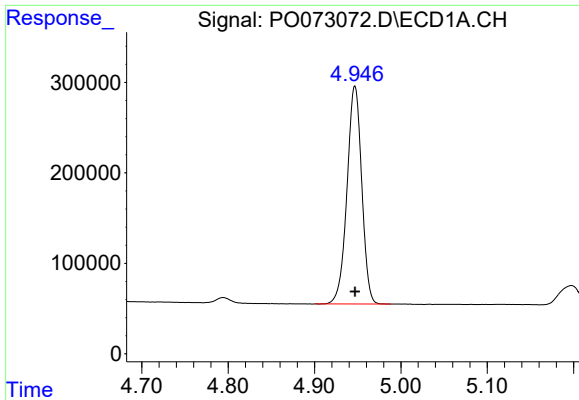
Data Path : Z:\pestpcbsrv\HPCHEM1\ECD\_0\Data\PO110420\  
 Data File : PO073072.D  
 Signal(s) : Signal #1: ECD1A.CH Signal #2: ECD2B.CH  
 Acq On : 04 Nov 2020 12:28  
 Operator : DD\AJ  
 Sample : AR1221ICC500  
 Misc :  
 ALS Vial : 10 Sample Multiplier: 1

Instrument :  
 ECD\_O  
 ClientSampled :

Integration File signal 1: autoint1.e  
 Integration File signal 2: autoint2.e  
 Quant Time: Nov 04 13:05:24 2020  
 Quant Method : Z:\pestpcbsrv\HPCHEM1\ECD\_0\methods\PO110420.M  
 Quant Title : GC EXTRACTABLES  
 QLast Update : Wed Nov 04 13:05:10 2020  
 Response via : Initial Calibration  
 Integrator: ChemStation 6890 Scale Mode: Small noise peaks clipped

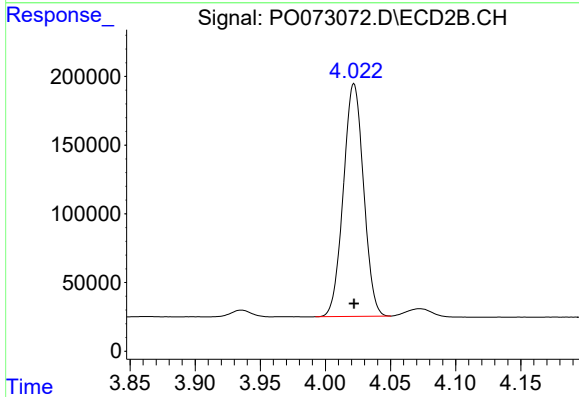
Volume Inj. : 2 µl  
 Signal #1 Phase : ZB-MR1 Signal #2 Phase: ZB-MR2  
 Signal #1 Info : 30Mx0.32mmx 0.50µ Signal #2 Info : 30M x 0.32mm x 0.25µm



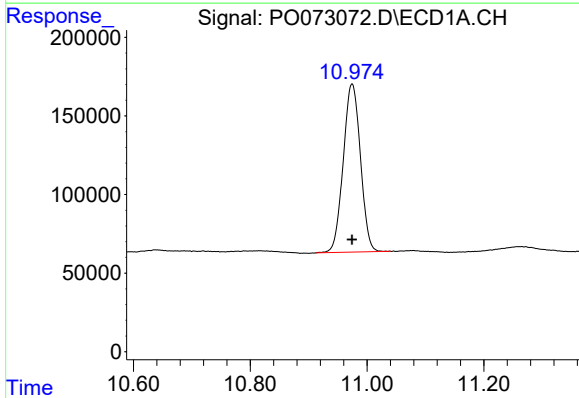


#1 Tetrachloro-m-xylene  
 R.T.: 4.947 min  
 Delta R.T.: 0.000 min  
 Response: 2853715  
 Conc: 50.00 ng/ml

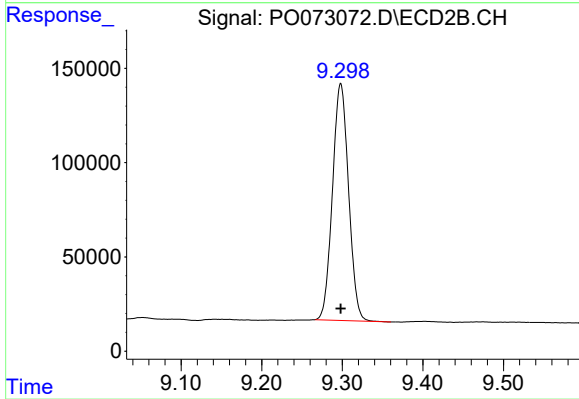
Instrument :  
 ECD\_O  
 ClientSampled :



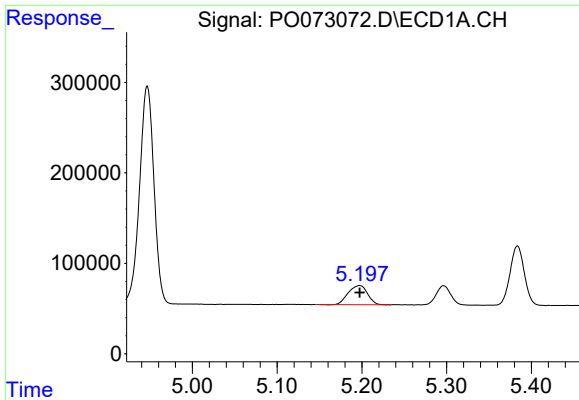
#1 Tetrachloro-m-xylene  
 R.T.: 4.022 min  
 Delta R.T.: 0.000 min  
 Response: 1831230  
 Conc: 50.00 ng/ml



#2 Decachlorobiphenyl  
 R.T.: 10.974 min  
 Delta R.T.: 0.000 min  
 Response: 2188278  
 Conc: 50.00 ng/ml



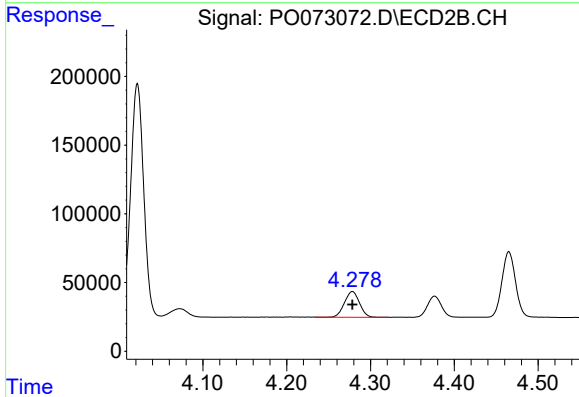
#2 Decachlorobiphenyl  
 R.T.: 9.298 min  
 Delta R.T.: 0.000 min  
 Response: 1741437  
 Conc: 50.00 ng/ml



#8 AR-1221-1

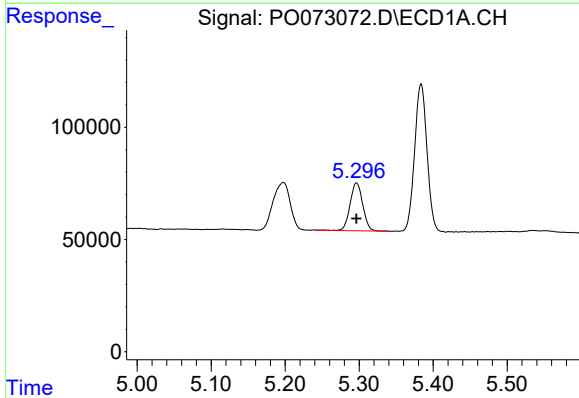
R.T.: 5.197 min  
 Delta R.T.: 0.000 min  
 Response: 337141  
 Conc: 500.00 ng/ml

Instrument :  
 ECD\_O  
 ClientSampled :



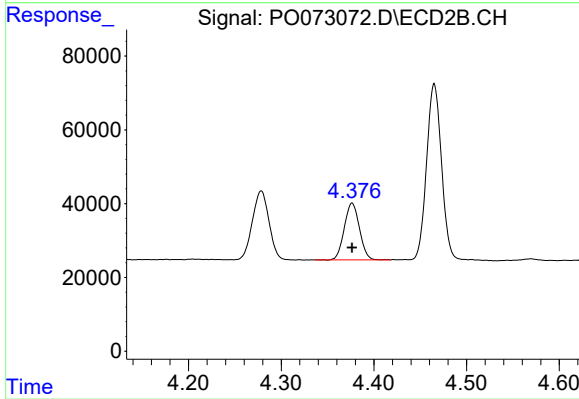
#8 AR-1221-1

R.T.: 4.278 min  
 Delta R.T.: 0.000 min  
 Response: 232730  
 Conc: 500.00 ng/ml



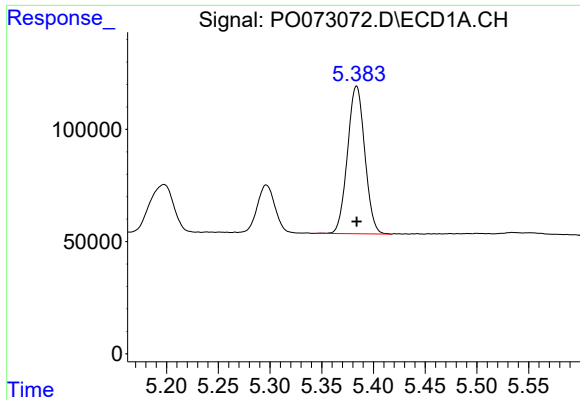
#9 AR-1221-2

R.T.: 5.296 min  
 Delta R.T.: 0.000 min  
 Response: 254815  
 Conc: 500.00 ng/ml



#9 AR-1221-2

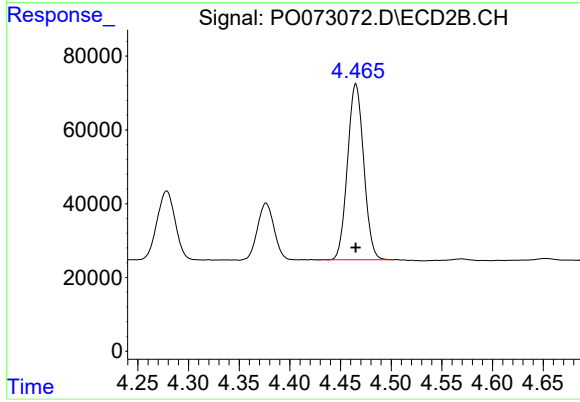
R.T.: 4.377 min  
 Delta R.T.: 0.000 min  
 Response: 174789  
 Conc: 500.00 ng/ml



#10 AR-1221-3

R.T.: 5.384 min  
Delta R.T.: 0.000 min  
Response: 767754  
Conc: 500.00 ng/ml

Instrument :  
ECD\_O  
ClientSampleId :



#10 AR-1221-3

R.T.: 4.465 min  
Delta R.T.: 0.000 min  
Response: 531564  
Conc: 500.00 ng/ml