

Data Path : Z:\pestpcbsrv\HPCHEM1\ECD\_0\Data\PO110420\  
 Data File : PO073080.D  
 Signal(s) : Signal #1: ECD1A.CH Signal #2: ECD2B.CH  
 Acq On : 04 Nov 2020 14:45  
 Operator : DD\AJ  
 Sample : AR1242ICC050  
 Misc :  
 ALS Vial : 18 Sample Multiplier: 1

Instrument :  
 ECD\_0  
 ClientSampleId :  
 AR1242ICC050

Integration File signal 1: autoint1.e  
 Integration File signal 2: autoint2.e  
 Quant Time: Nov 04 14:58:57 2020  
 Quant Method : Z:\pestpcbsrv\HPCHEM1\ECD\_0\methods\PO110420.M  
 Quant Title : GC EXTRACTABLES  
 QLast Update : Wed Nov 04 14:28:43 2020  
 Response via : Initial Calibration  
 Integrator: ChemStation 6890 Scale Mode: Small noise peaks clipped

Volume Inj. : 2 µl  
 Signal #1 Phase : ZB-MR1 Signal #2 Phase: ZB-MR2  
 Signal #1 Info : 30Mx0.32mmx 0.50µ Signal #2 Info : 30M x 0.32mm x 0.25µm

Compound	RT#1	RT#2	Resp#1	Resp#2	ng/ml	ng/ml
-----						
System Monitoring Compounds						
1) SA Tetrachlo...	4.947	4.022	322351	208699	5.619	5.665
2) SA Decachlor...	10.975	9.299	255600	226410	5.789	6.394
Target Compounds						
16) L4 AR-1242-1	6.271	5.274	102983	78151	62.102	66.656
17) L4 AR-1242-2	6.294	5.294	142435	101707	62.422	64.618
18) L4 AR-1242-3	6.361	5.484	86159	47232	61.565	58.614
19) L4 AR-1242-4	0.000	5.581	0	45185	N.D.	53.521 #
20) L4 AR-1242-5	0.000	6.141	0	67362	N.D.	62.120 #
-----						

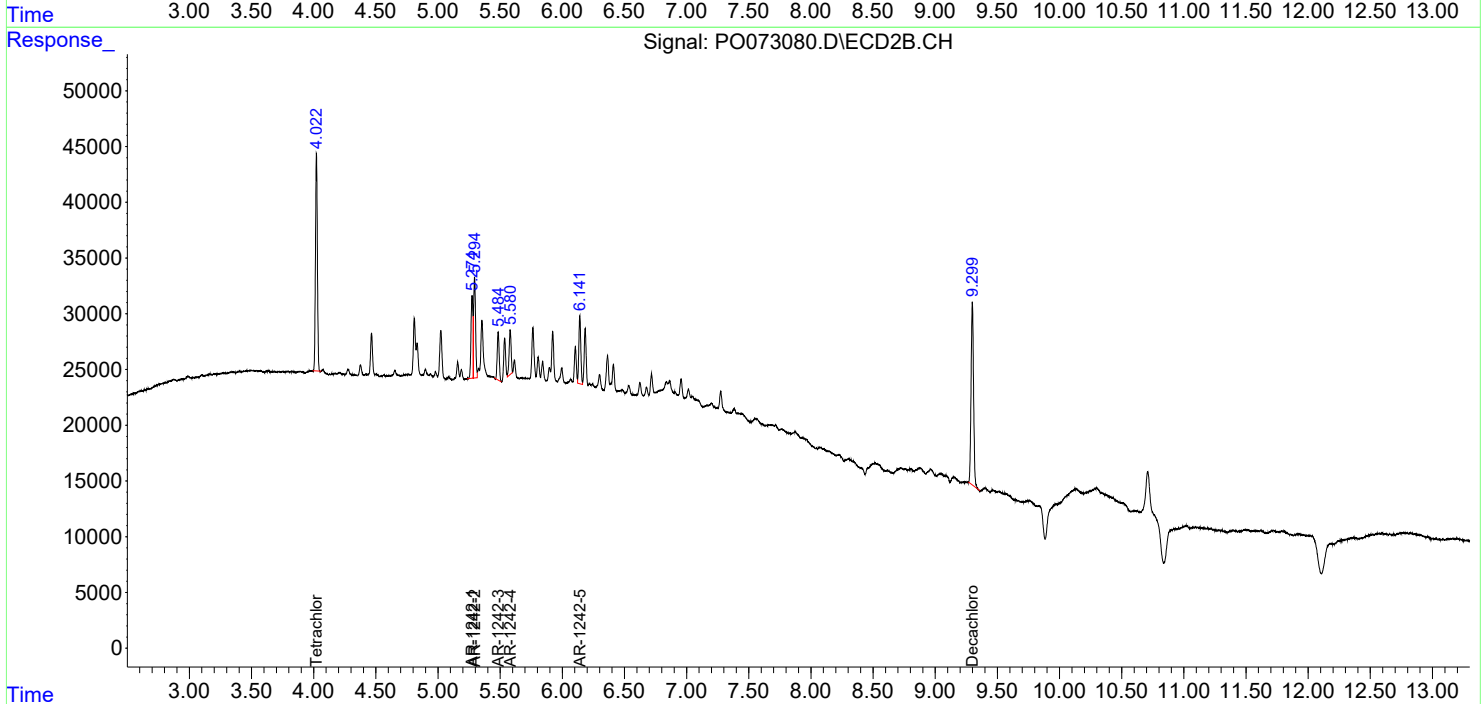
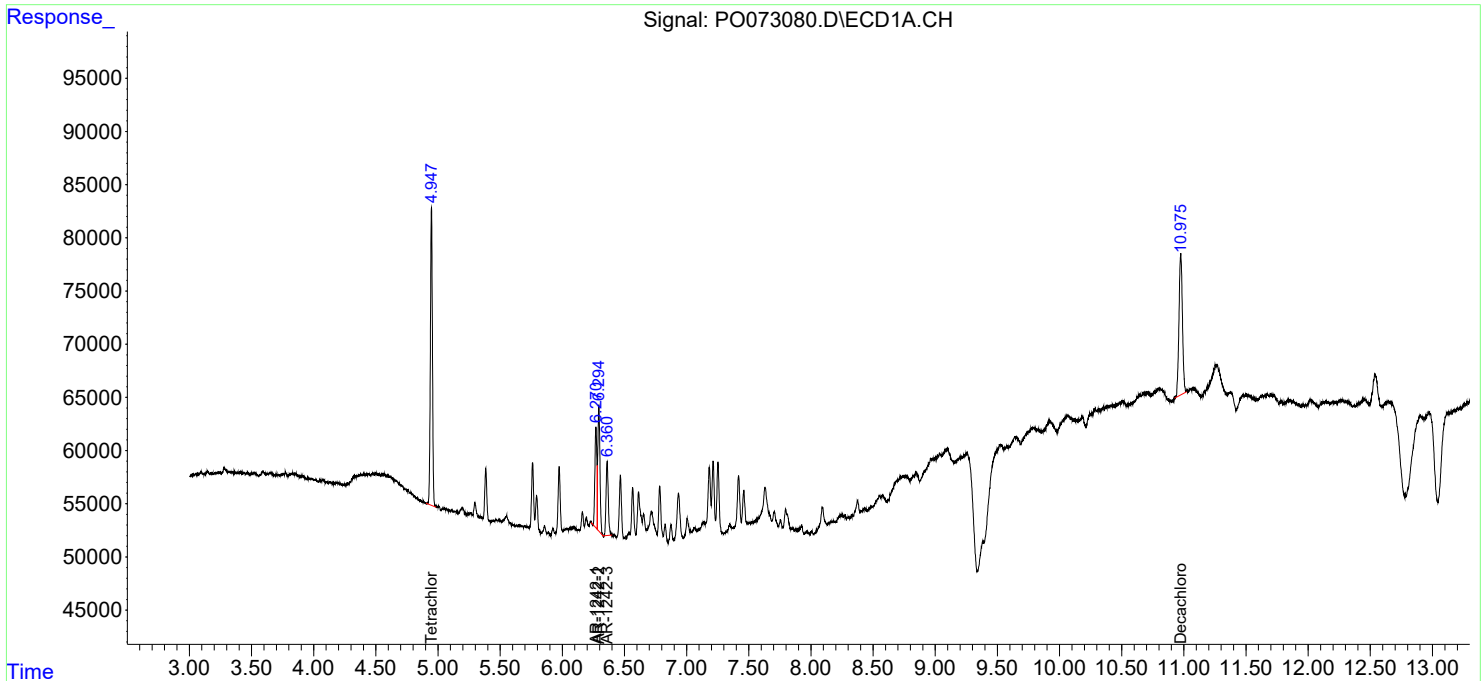
(f)=RT Delta > 1/2 Window (#)=Amounts differ by > 25% (m)=manual int.

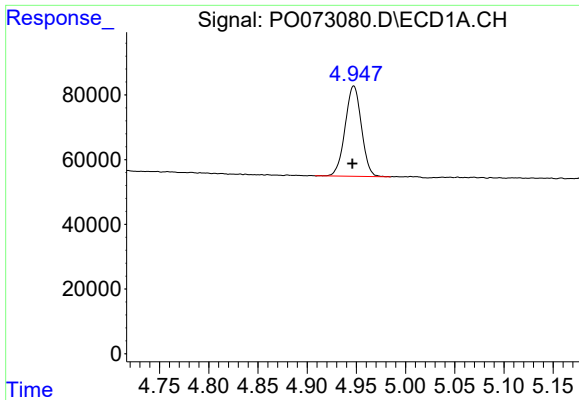
Data Path : Z:\pestpcbsrv\HPCHEM1\ECD\_O\Data\PO110420\  
 Data File : PO073080.D  
 Signal(s) : Signal #1: ECD1A.CH Signal #2: ECD2B.CH  
 Acq On : 04 Nov 2020 14:45  
 Operator : DD\AJ  
 Sample : AR1242ICC050  
 Misc :  
 ALS Vial : 18 Sample Multiplier: 1

Instrument :  
 ECD\_O  
 ClientSampleId :  
 AR1242ICC050

Integration File signal 1: autoint1.e  
 Integration File signal 2: autoint2.e  
 Quant Time: Nov 04 14:58:57 2020  
 Quant Method : Z:\pestpcbsrv\HPCHEM1\ECD\_O\methods\PO110420.M  
 Quant Title : GC EXTRACTABLES  
 QLast Update : Wed Nov 04 14:28:43 2020  
 Response via : Initial Calibration  
 Integrator: ChemStation 6890 Scale Mode: Small noise peaks clipped

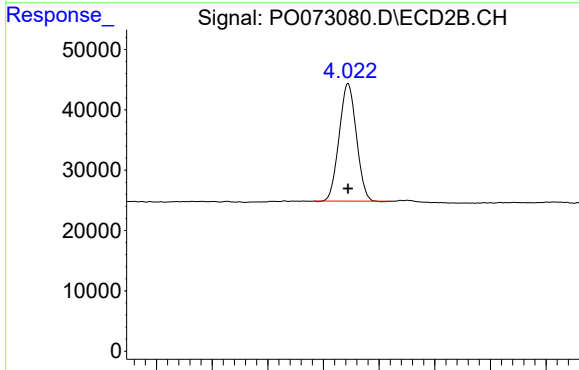
Volume Inj. : 2 µl  
 Signal #1 Phase : ZB-MR1 Signal #2 Phase: ZB-MR2  
 Signal #1 Info : 30Mx0.32mmx 0.50µ Signal #2 Info : 30M x 0.32mm x 0.25µm



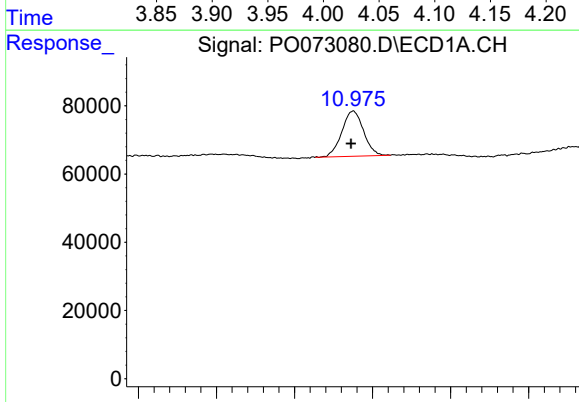


#1 Tetrachloro-m-xylene  
 R.T.: 4.947 min  
 Delta R.T.: 0.001 min  
 Response: 322351  
 Conc: 5.62 ng/ml

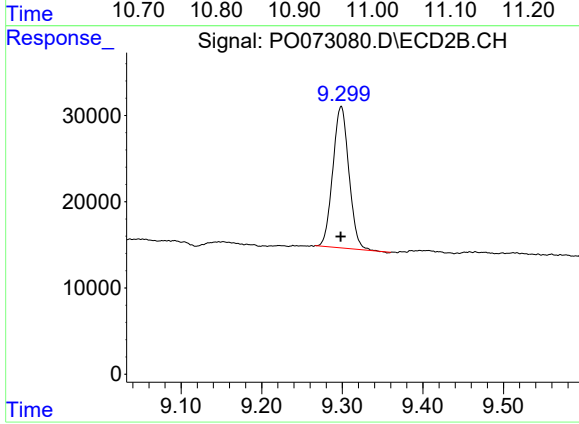
Instrument :  
 ECD\_O  
 ClientSampleId :  
 AR1242ICC050



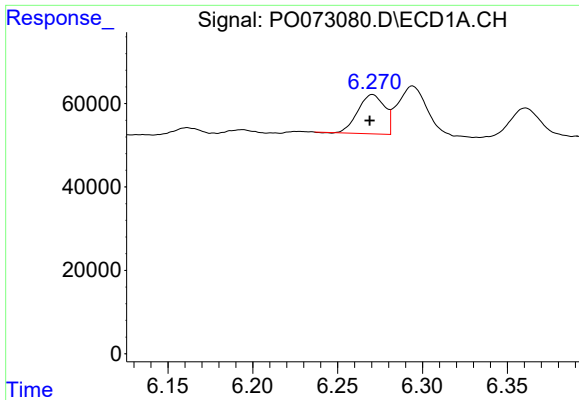
#1 Tetrachloro-m-xylene  
 R.T.: 4.022 min  
 Delta R.T.: 0.000 min  
 Response: 208699  
 Conc: 5.66 ng/ml



#2 Decachlorobiphenyl  
 R.T.: 10.975 min  
 Delta R.T.: 0.003 min  
 Response: 255600  
 Conc: 5.79 ng/ml



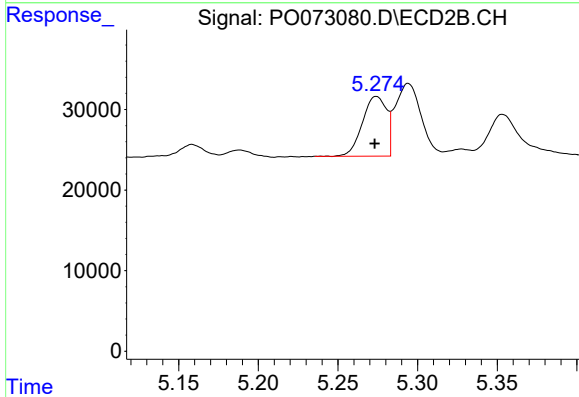
#2 Decachlorobiphenyl  
 R.T.: 9.299 min  
 Delta R.T.: 0.000 min  
 Response: 226410  
 Conc: 6.39 ng/ml



#16 AR-1242-1

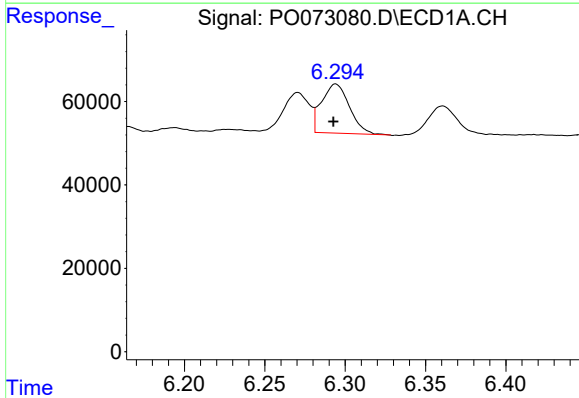
R.T.: 6.271 min  
 Delta R.T.: 0.002 min  
 Response: 102983  
 Conc: 62.10 ng/ml

Instrument :  
 ECD\_O  
 ClientSampleId :  
 AR1242ICC050



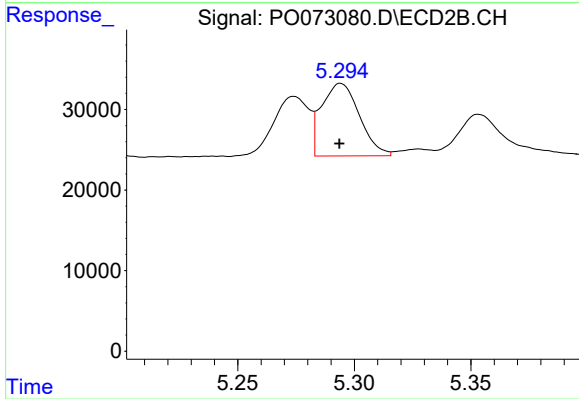
#16 AR-1242-1

R.T.: 5.274 min  
 Delta R.T.: 0.001 min  
 Response: 78151  
 Conc: 66.66 ng/ml



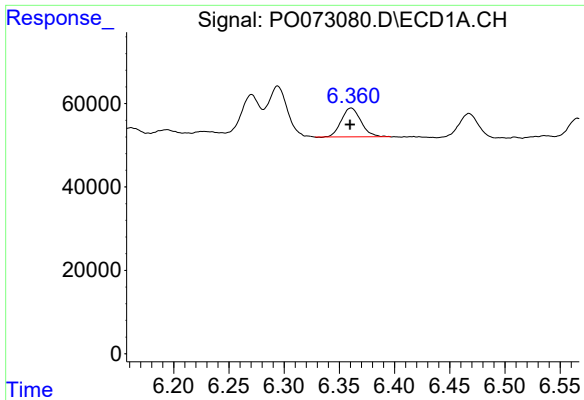
#17 AR-1242-2

R.T.: 6.294 min  
 Delta R.T.: 0.001 min  
 Response: 142435  
 Conc: 62.42 ng/ml



#17 AR-1242-2

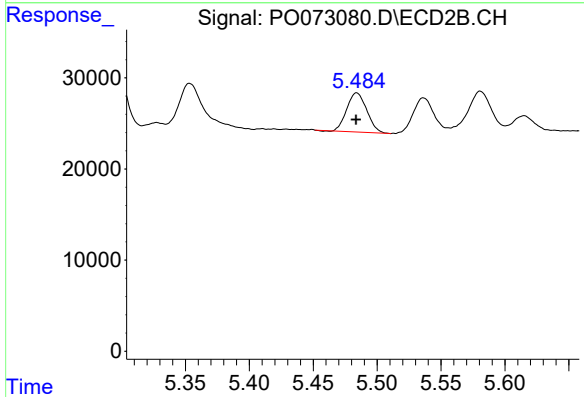
R.T.: 5.294 min  
 Delta R.T.: 0.000 min  
 Response: 101707  
 Conc: 64.62 ng/ml



#18 AR-1242-3

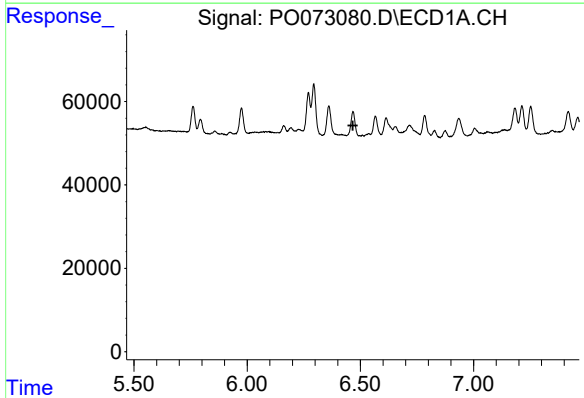
R.T.: 6.361 min  
 Delta R.T.: 0.000 min  
 Response: 86159  
 Conc: 61.56 ng/ml

Instrument :  
 ECD\_O  
 ClientSampleId :  
 AR1242ICC050



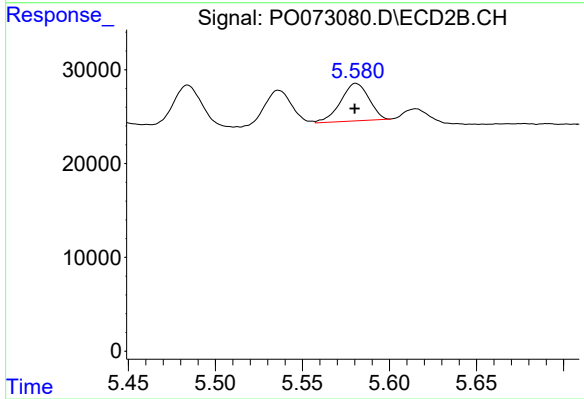
#18 AR-1242-3

R.T.: 5.484 min  
 Delta R.T.: 0.000 min  
 Response: 47232  
 Conc: 58.61 ng/ml



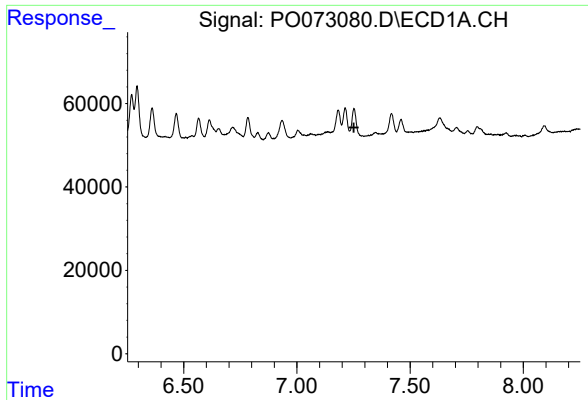
#19 AR-1242-4

R.T.: 0.000 min  
 Exp R.T. : 6.467 min  
 Response: 0  
 Conc: N.D.



#19 AR-1242-4

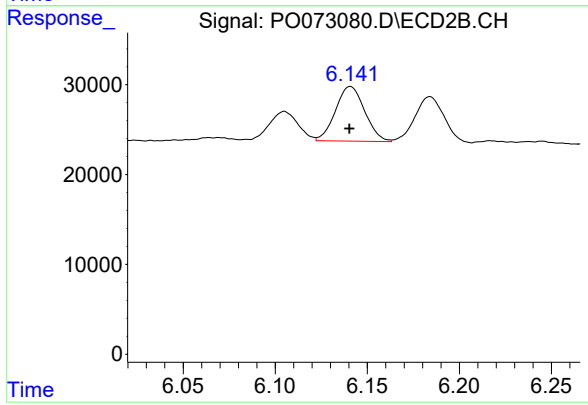
R.T.: 5.581 min  
 Delta R.T.: 0.000 min  
 Response: 45185  
 Conc: 53.52 ng/ml



#20 AR-1242-5

R.T.: 0.000 min  
Exp R.T.: 7.252 min  
Response: 0  
Conc: N.D.

Instrument :  
ECD\_O  
ClientSampled :  
AR1242ICC050



#20 AR-1242-5

R.T.: 6.141 min  
Delta R.T.: 0.000 min  
Response: 67362  
Conc: 62.12 ng/ml