

Data Path : Z:\pestpcbsrv\HPCHEM1\ECD_0\Data\PO110420\
 Data File : PO073085.D
 Signal(s) : Signal #1: ECD1A.CH Signal #2: ECD2B.CH
 Acq On : 04 Nov 2020 16:10
 Operator : DD\AJ
 Sample : AR1248ICC050
 Misc :
 ALS Vial : 23 Sample Multiplier: 1

Instrument :
 ECD_0
 ClientSampleId :
 AR1248ICC050

Integration File signal 1: autoint1.e
 Integration File signal 2: autoint2.e
 Quant Time: Nov 04 16:41:33 2020
 Quant Method : Z:\pestpcbsrv\HPCHEM1\ECD_0\methods\PO110420.M
 Quant Title : GC EXTRACTABLES
 QLast Update : Wed Nov 04 16:07:07 2020
 Response via : Initial Calibration
 Integrator: ChemStation 6890 Scale Mode: Small noise peaks clipped

Volume Inj. : 2 µl
 Signal #1 Phase : ZB-MR1 Signal #2 Phase: ZB-MR2
 Signal #1 Info : 30Mx0.32mmx 0.50µ Signal #2 Info : 30M x 0.32mm x 0.25µm

| Compound | RT#1 | RT#2 | Resp#1 | Resp#2 | ng/ml | ng/ml |
|-----------------------------|--------|-------|--------|--------|--------|----------|
| ----- | | | | | | |
| System Monitoring Compounds | | | | | | |
| 1) SA Tetrachlo... | 4.948 | 4.023 | 331625 | 219101 | 5.635 | 5.779 |
| 2) SA Decachlor... | 10.974 | 9.299 | 280576 | 235940 | 6.134 | 6.468 |
| Target Compounds | | | | | | |
| 21) L5 AR-1248-1 | 6.270 | 5.274 | 16479 | 58710 | 12.700 | 66.840 # |
| 22) L5 AR-1248-2 | 6.566 | 5.536 | 99245 | 82637 | 59.347 | 68.532 |
| 23) L5 AR-1248-3 | 6.784 | 5.581 | 97010 | 86019 | 52.198 | 68.334 # |
| 24) L5 AR-1248-4 | 7.214 | 5.764 | 147526 | 97189 | 64.577 | 64.946 |
| 25) L5 AR-1248-5 | 7.253 | 6.185 | 137952 | 89011 | 63.292 | 57.600 |
| ----- | | | | | | |

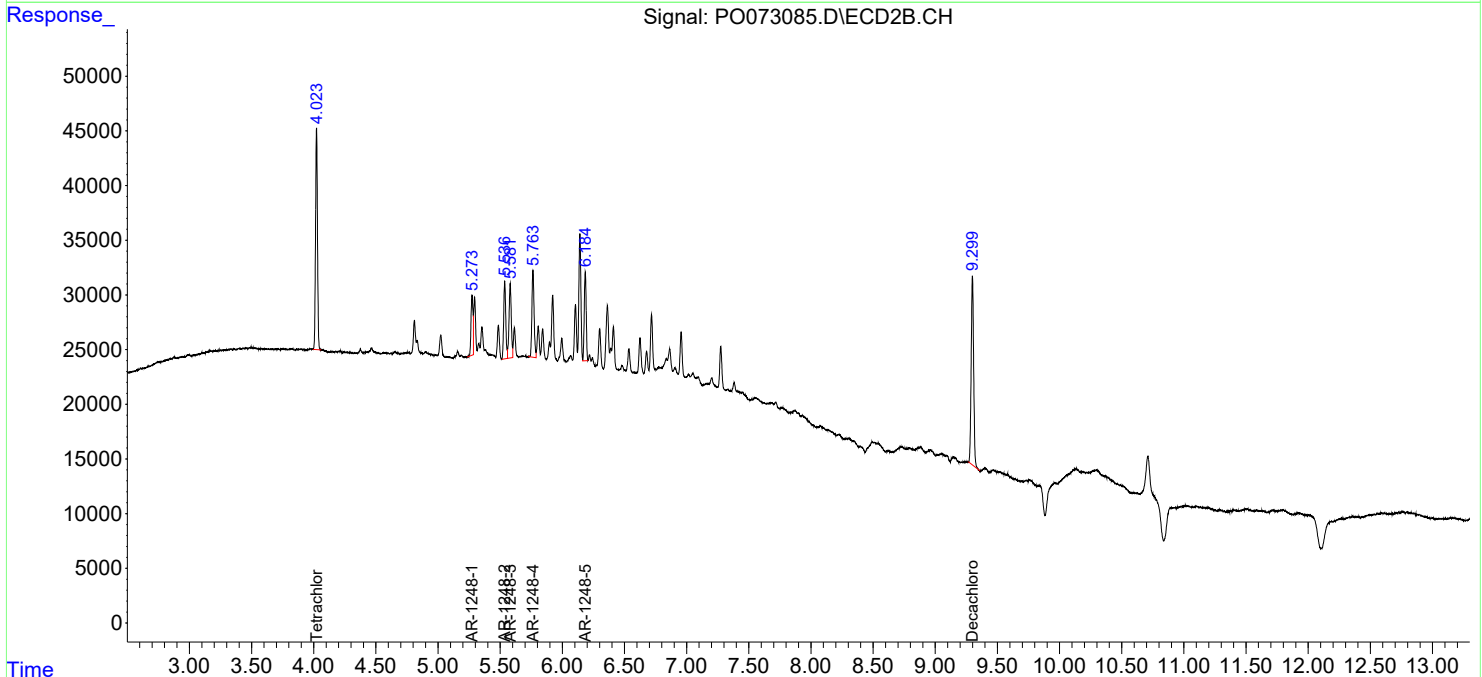
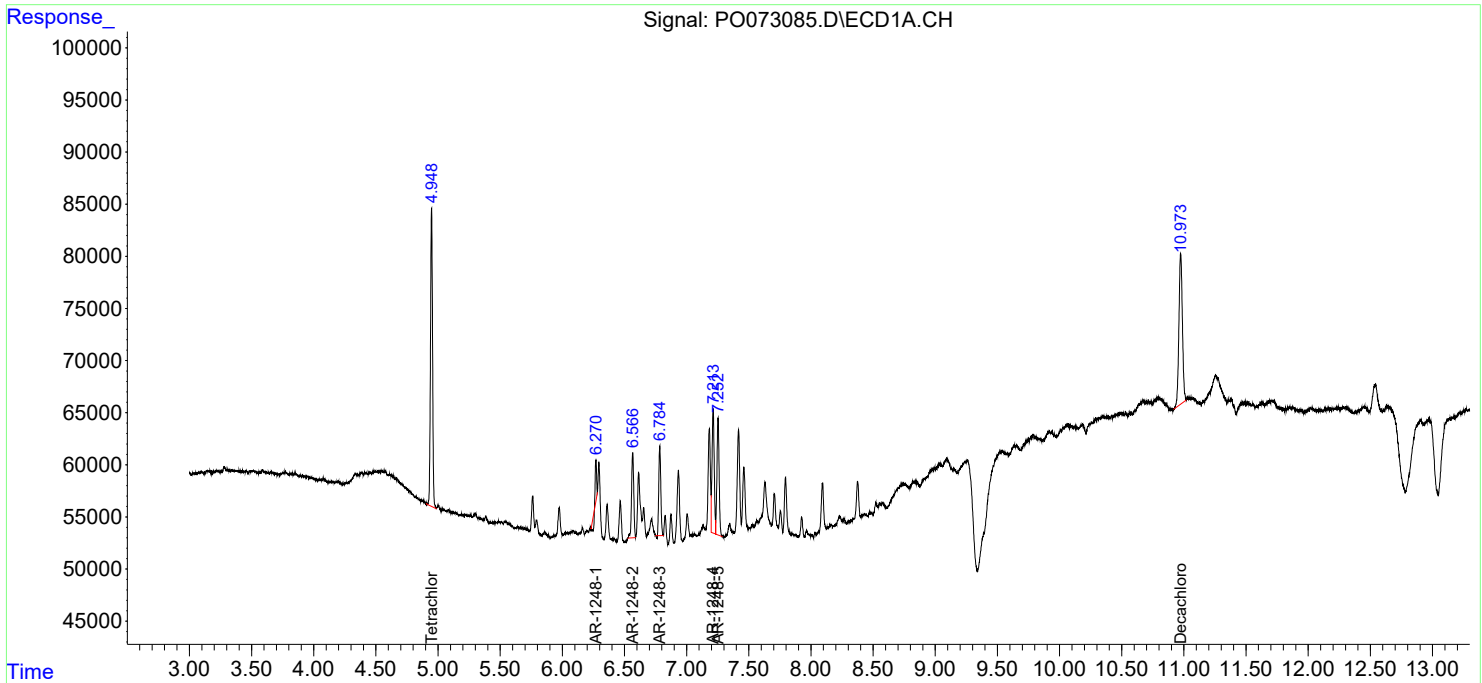
(f)=RT Delta > 1/2 Window (#)=Amounts differ by > 25% (m)=manual int.

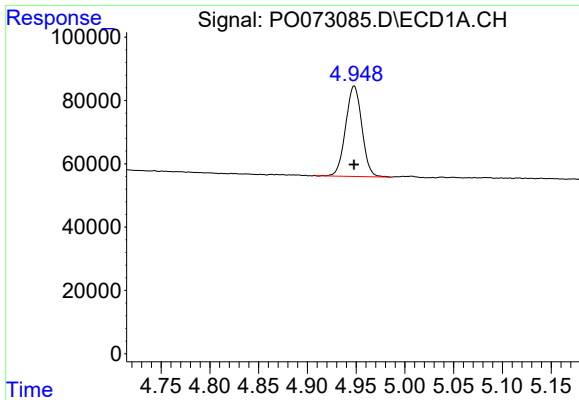
Data Path : Z:\pestpcbsrv\HPCHEM1\ECD_0\Data\PO110420\
 Data File : PO073085.D
 Signal(s) : Signal #1: ECD1A.CH Signal #2: ECD2B.CH
 Acq On : 04 Nov 2020 16:10
 Operator : DD\AJ
 Sample : AR1248ICC050
 Misc :
 ALS Vial : 23 Sample Multiplier: 1

Instrument :
 ECD_O
 ClientSampled :
 AR1248ICC050

Integration File signal 1: autoint1.e
 Integration File signal 2: autoint2.e
 Quant Time: Nov 04 16:41:33 2020
 Quant Method : Z:\pestpcbsrv\HPCHEM1\ECD_0\methods\PO110420.M
 Quant Title : GC EXTRACTABLES
 QLast Update : Wed Nov 04 16:07:07 2020
 Response via : Initial Calibration
 Integrator: ChemStation 6890 Scale Mode: Small noise peaks clipped

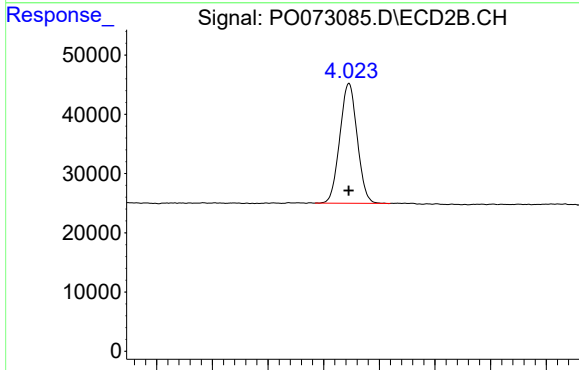
Volume Inj. : 2 µl
 Signal #1 Phase : ZB-MR1 Signal #2 Phase: ZB-MR2
 Signal #1 Info : 30Mx0.32mmx 0.50µ Signal #2 Info : 30M x 0.32mm x 0.25µm



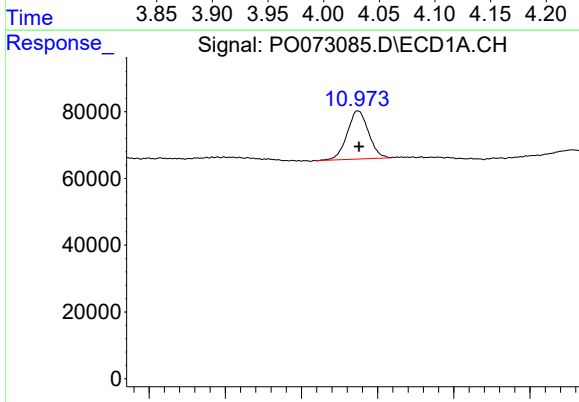


#1 Tetrachloro-m-xylene
 R.T.: 4.948 min
 Delta R.T.: 0.000 min
 Response: 331625
 Conc: 5.63 ng/ml

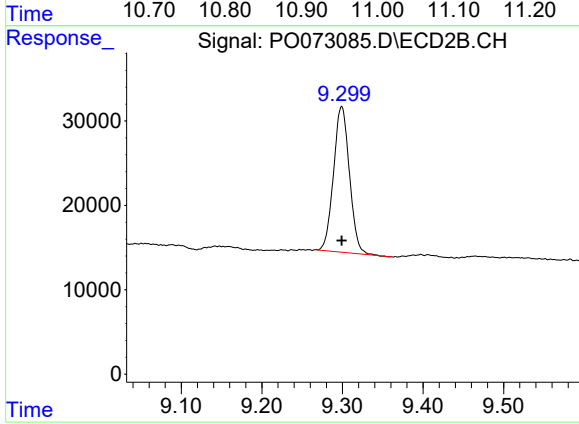
Instrument :
 ECD_O
 ClientSampleId :
 AR1248ICC050



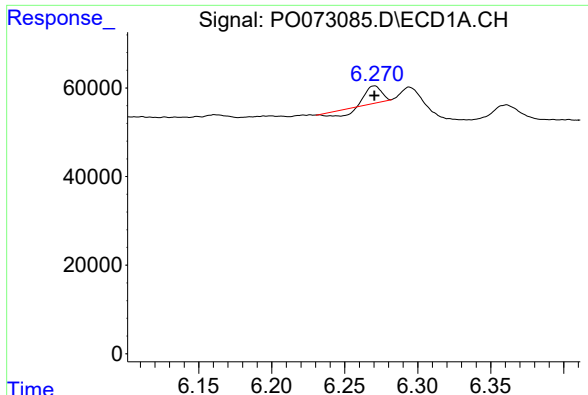
#1 Tetrachloro-m-xylene
 R.T.: 4.023 min
 Delta R.T.: 0.000 min
 Response: 219101
 Conc: 5.78 ng/ml



#2 Decachlorobiphenyl
 R.T.: 10.974 min
 Delta R.T.: -0.002 min
 Response: 280576
 Conc: 6.13 ng/ml

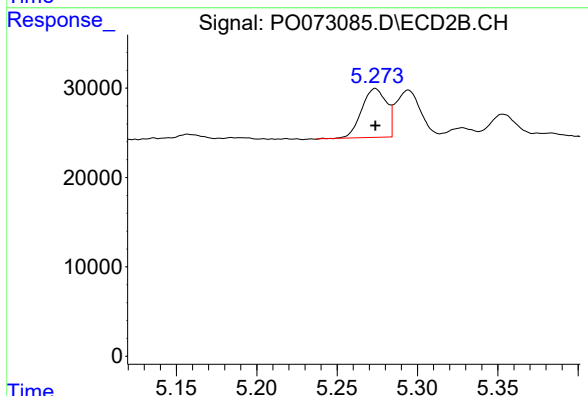


#2 Decachlorobiphenyl
 R.T.: 9.299 min
 Delta R.T.: 0.000 min
 Response: 235940
 Conc: 6.47 ng/ml

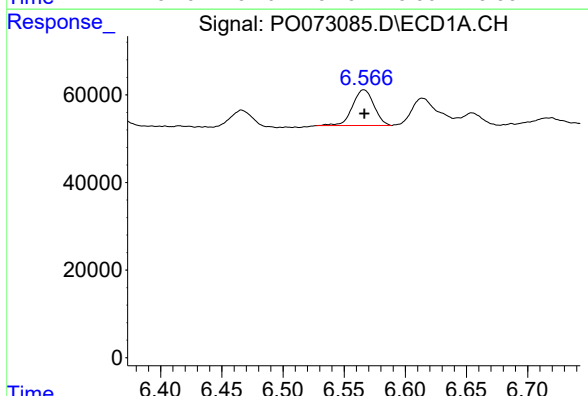


#21 AR-1248-1
 R.T.: 6.270 min
 Delta R.T.: 0.000 min
 Response: 16479
 Conc: 12.70 ng/ml

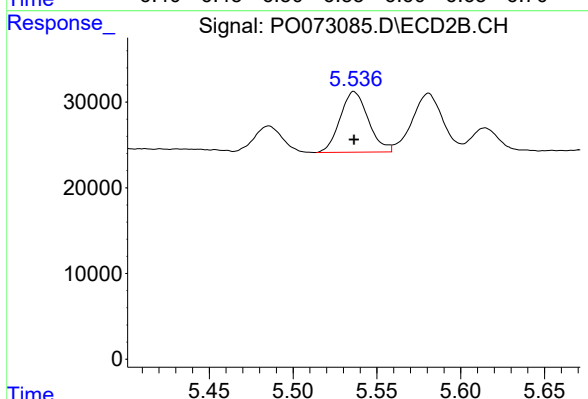
Instrument :
 ECD_O
ClientSampleId :
 AR1248ICC050



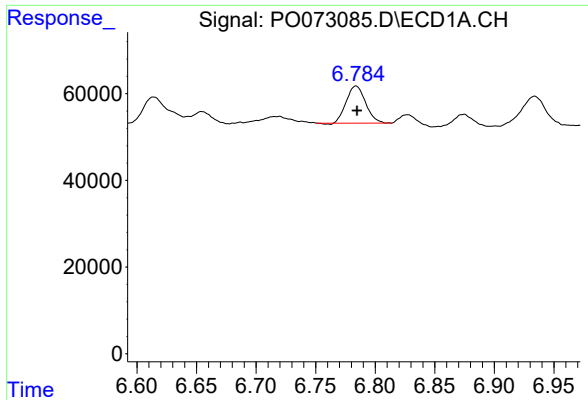
#21 AR-1248-1
 R.T.: 5.274 min
 Delta R.T.: 0.000 min
 Response: 58710
 Conc: 66.84 ng/ml



#22 AR-1248-2
 R.T.: 6.566 min
 Delta R.T.: 0.000 min
 Response: 99245
 Conc: 59.35 ng/ml



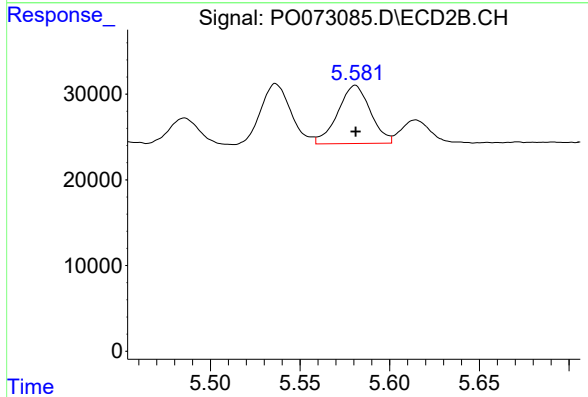
#22 AR-1248-2
 R.T.: 5.536 min
 Delta R.T.: 0.000 min
 Response: 82637
 Conc: 68.53 ng/ml



#23 AR-1248-3

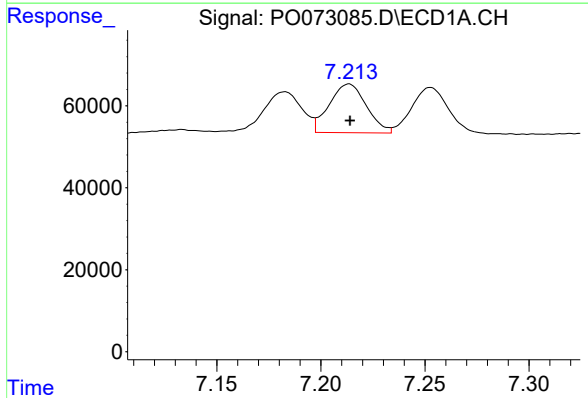
R.T.: 6.784 min
 Delta R.T.: 0.000 min
 Response: 97010
 Conc: 52.20 ng/ml

Instrument :
 ECD_O
ClientSampleId :
 AR1248ICC050



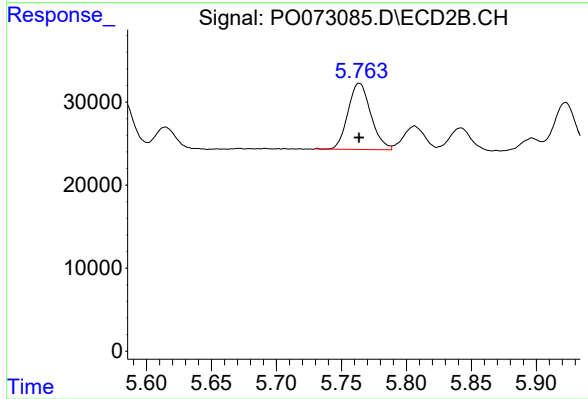
#23 AR-1248-3

R.T.: 5.581 min
 Delta R.T.: 0.000 min
 Response: 86019
 Conc: 68.33 ng/ml



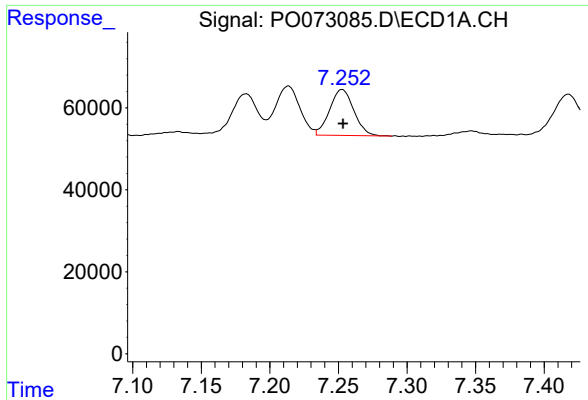
#24 AR-1248-4

R.T.: 7.214 min
 Delta R.T.: 0.000 min
 Response: 147526
 Conc: 64.58 ng/ml



#24 AR-1248-4

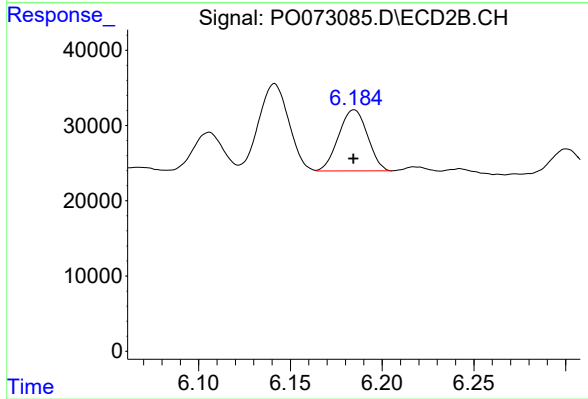
R.T.: 5.764 min
 Delta R.T.: 0.000 min
 Response: 97189
 Conc: 64.95 ng/ml



#25 AR-1248-5

R.T.: 7.253 min
Delta R.T.: 0.000 min
Response: 137952
Conc: 63.29 ng/ml

Instrument :
ECD_O
ClientSampled :
AR1248ICC050



#25 AR-1248-5

R.T.: 6.185 min
Delta R.T.: 0.000 min
Response: 89011
Conc: 57.60 ng/ml