

Data Path : Z:\pestpcbsrv\HPCHEM1\ECD_0\Data\PO110420\
 Data File : PO073091.D
 Signal(s) : Signal #1: ECD1A.CH Signal #2: ECD2B.CH
 Acq On : 04 Nov 2020 17:52
 Operator : DD\AJ
 Sample : AR1262ICC500
 Misc :
 ALS Vial : 29 Sample Multiplier: 1

Instrument :
 ECD_0
 ClientSampleId :
 AR1262ICC500

Integration File signal 1: autoint1.e
 Integration File signal 2: autoint2.e
 Quant Time: Nov 05 05:25:40 2020
 Quant Method : Z:\pestpcbsrv\HPCHEM1\ECD_0\methods\PO110420.M
 Quant Title : GC EXTRACTABLES
 QLast Update : Thu Nov 05 05:25:15 2020
 Response via : Initial Calibration
 Integrator: ChemStation 6890 Scale Mode: Small noise peaks clipped

Volume Inj. : 2 µl
 Signal #1 Phase : ZB-MR1 Signal #2 Phase: ZB-MR2
 Signal #1 Info : 30Mx0.32mmx 0.50µ Signal #2 Info : 30M x 0.32mm x 0.25µm

Compound	RT#1	RT#2	Resp#1	Resp#2	ng/ml	ng/ml

System Monitoring Compounds						
1) SA Tetrachlo...	4.947	4.022	2879345	1835225	50.000	50.000
2) SA Decachlor...	10.971	9.297	2290416	1856699	50.000	50.000
Target Compounds						
36) L8 AR-1262-1	8.594	7.380	1703907	778651	500.000	500.000
37) L8 AR-1262-2	9.152	7.929	2902613	2529670	500.000	500.000
38) L8 AR-1262-3	9.464	8.216	2079730	1015017	500.000	500.000
39) L8 AR-1262-4	9.558	8.279	1607875	1835872	500.000	500.000
40) L8 AR-1262-5	10.224	8.772	1051639	874544	500.000	500.000

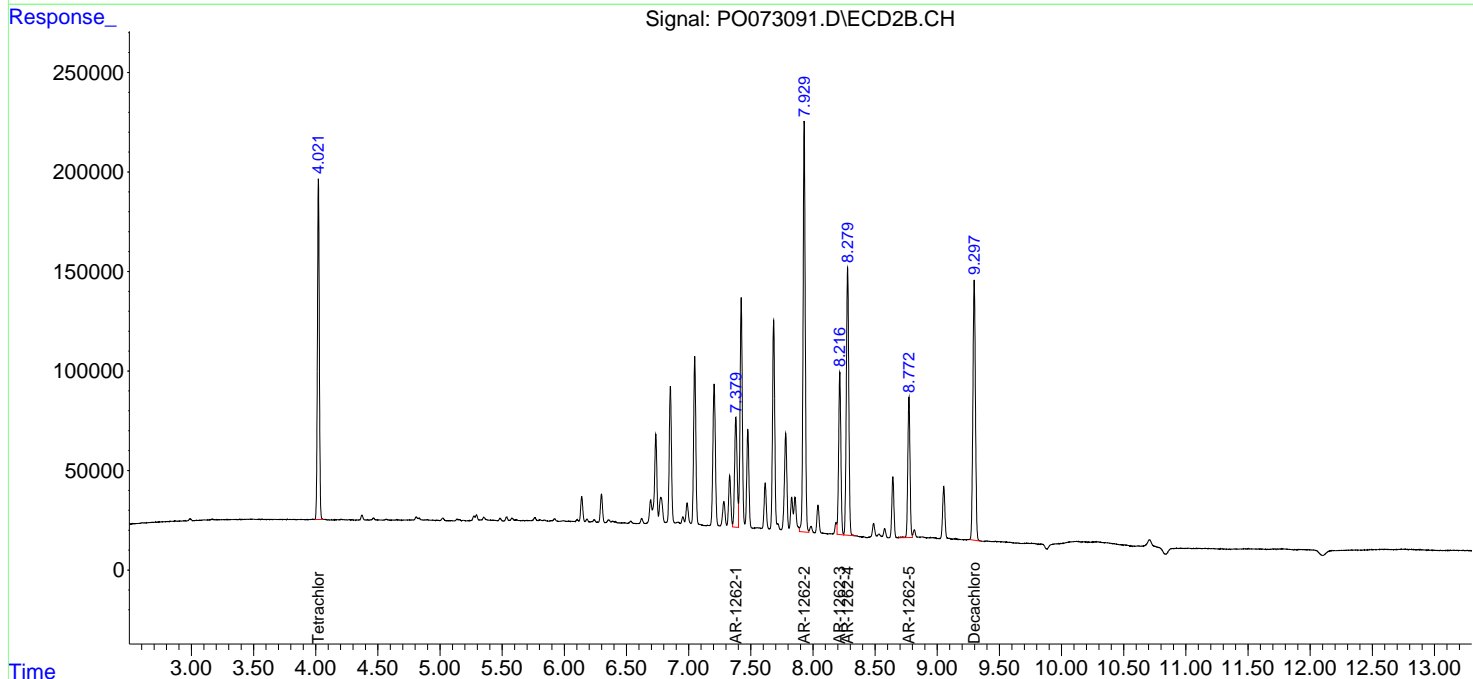
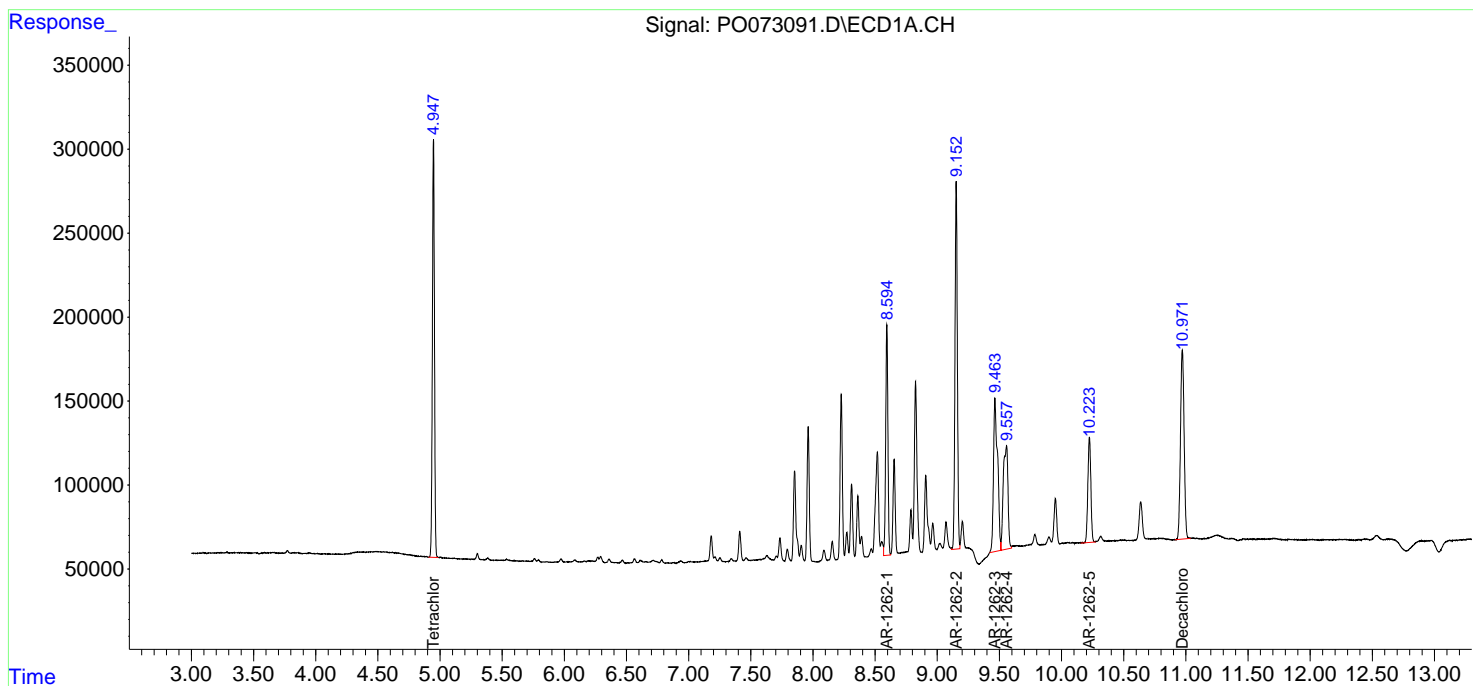
(f)=RT Delta > 1/2 Window (#)=Amounts differ by > 25% (m)=manual int.

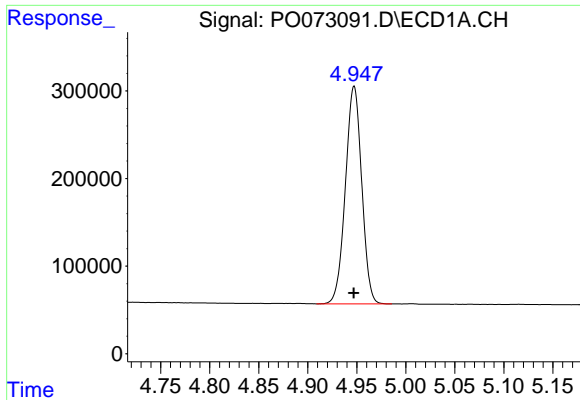
Data Path : Z:\pestpcbsrv\HPCHEM1\ECD_0\Data\PO110420\
 Data File : PO073091.D
 Signal(s) : Signal #1: ECD1A.CH Signal #2: ECD2B.CH
 Acq On : 04 Nov 2020 17:52
 Operator : DD\AJ
 Sample : AR1262ICC500
 Misc :
 ALS Vial : 29 Sample Multiplier: 1

Instrument :
 ECD_O
 ClientSampled :
 AR1262ICC500

Integration File signal 1: autoint1.e
 Integration File signal 2: autoint2.e
 Quant Time: Nov 05 05:25:40 2020
 Quant Method : Z:\pestpcbsrv\HPCHEM1\ECD_0\methods\PO110420.M
 Quant Title : GC EXTRACTABLES
 QLast Update : Thu Nov 05 05:25:15 2020
 Response via : Initial Calibration
 Integrator: ChemStation 6890 Scale Mode: Small noise peaks clipped

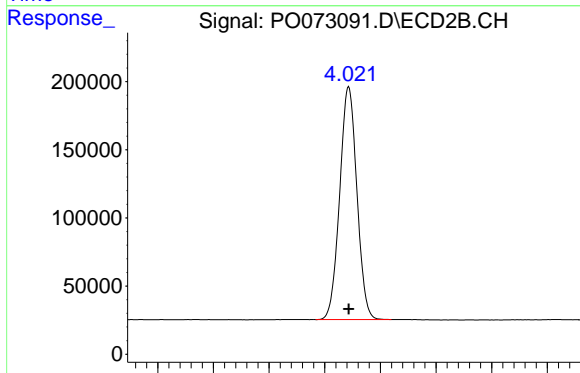
Volume Inj. : 2 µl
 Signal #1 Phase : ZB-MR1 Signal #2 Phase: ZB-MR2
 Signal #1 Info : 30Mx0.32mmx 0.50µ Signal #2 Info : 30M x 0.32mm x 0.25µm



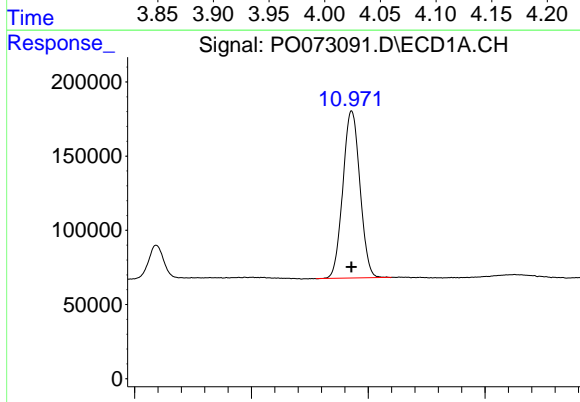


#1 Tetrachloro-m-xylene
 R.T.: 4.947 min
 Delta R.T.: 0.000 min
 Response: 2879345
 Conc: 50.00 ng/ml

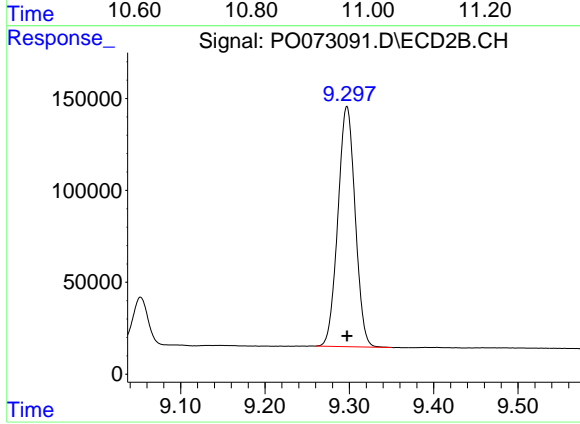
Instrument :
 ECD_O
 ClientSampleId :
 AR1262ICC500



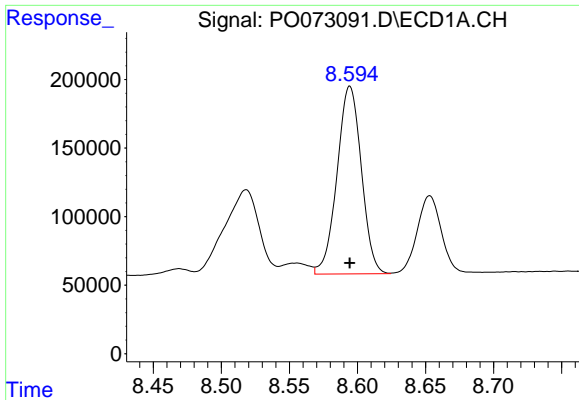
#1 Tetrachloro-m-xylene
 R.T.: 4.022 min
 Delta R.T.: 0.000 min
 Response: 1835225
 Conc: 50.00 ng/ml



#2 Decachlorobiphenyl
 R.T.: 10.971 min
 Delta R.T.: 0.000 min
 Response: 2290416
 Conc: 50.00 ng/ml



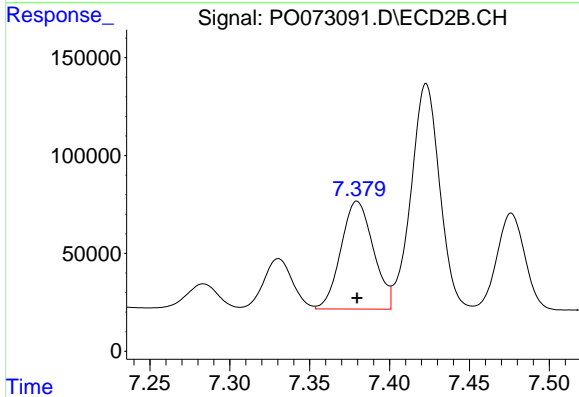
#2 Decachlorobiphenyl
 R.T.: 9.297 min
 Delta R.T.: 0.000 min
 Response: 1856699
 Conc: 50.00 ng/ml



#36 AR-1262-1

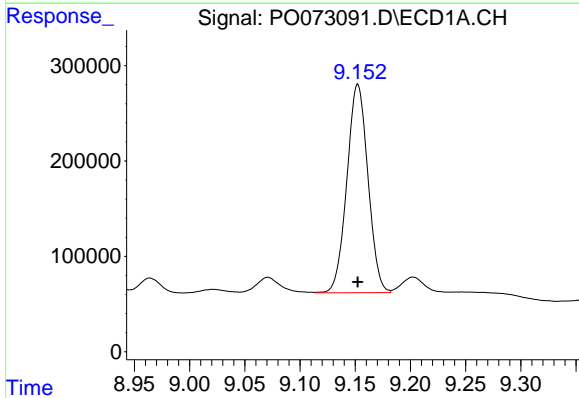
R.T.: 8.594 min
 Delta R.T.: 0.000 min
 Response: 1703907
 Conc: 500.00 ng/ml

Instrument :
 ECD_O
 ClientSampleId :
 AR1262ICC500



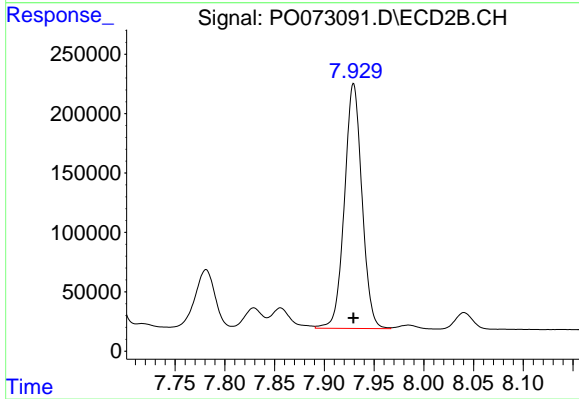
#36 AR-1262-1

R.T.: 7.380 min
 Delta R.T.: 0.000 min
 Response: 778651
 Conc: 500.00 ng/ml



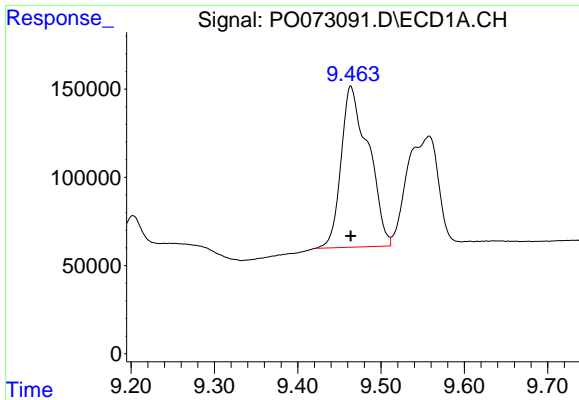
#37 AR-1262-2

R.T.: 9.152 min
 Delta R.T.: 0.000 min
 Response: 2902613
 Conc: 500.00 ng/ml



#37 AR-1262-2

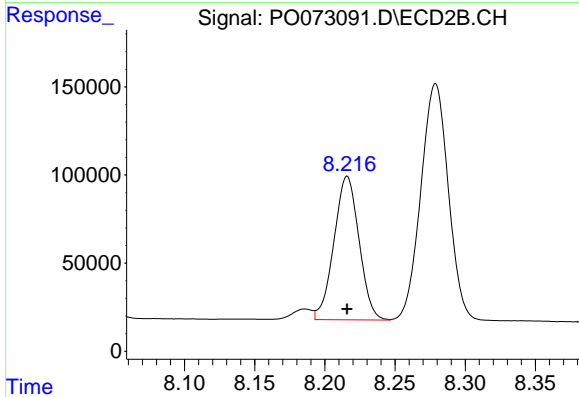
R.T.: 7.929 min
 Delta R.T.: 0.000 min
 Response: 2529670
 Conc: 500.00 ng/ml



#38 AR-1262-3

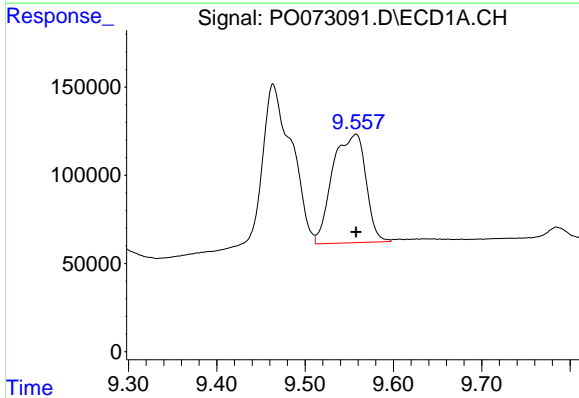
R.T.: 9.464 min
 Delta R.T.: 0.000 min
 Response: 2079730
 Conc: 500.00 ng/ml

Instrument :
 ECD_O
 ClientSampled :
 AR1262ICC500



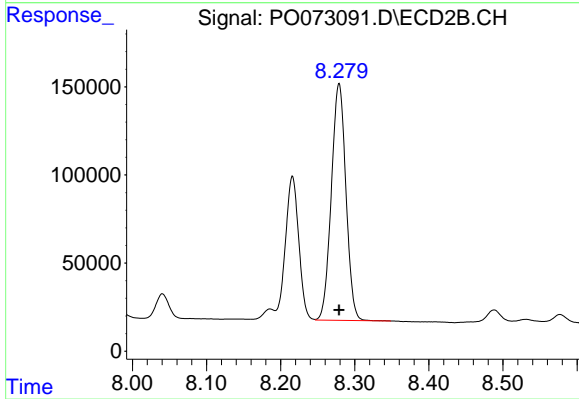
#38 AR-1262-3

R.T.: 8.216 min
 Delta R.T.: 0.000 min
 Response: 1015017
 Conc: 500.00 ng/ml



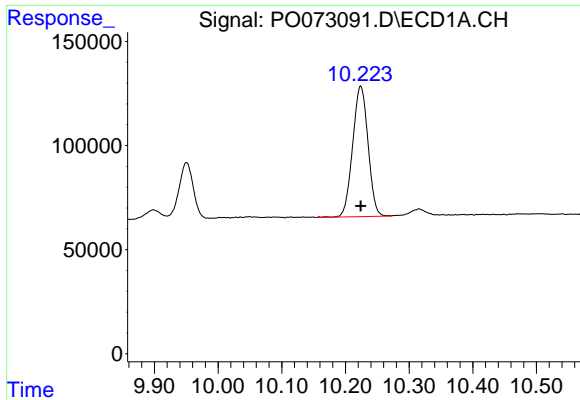
#39 AR-1262-4

R.T.: 9.558 min
 Delta R.T.: 0.000 min
 Response: 1607875
 Conc: 500.00 ng/ml



#39 AR-1262-4

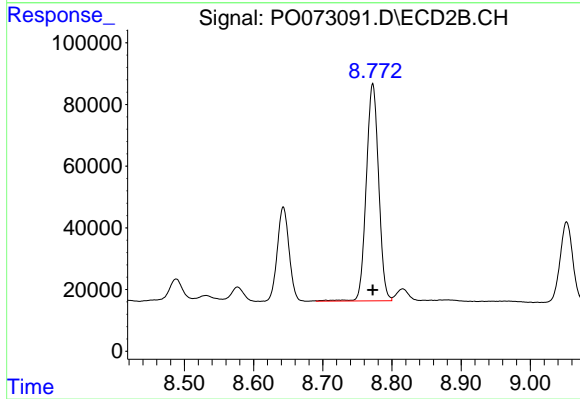
R.T.: 8.279 min
 Delta R.T.: 0.000 min
 Response: 1835872
 Conc: 500.00 ng/ml



#40 AR-1262-5

R.T.: 10.224 min
Delta R.T.: 0.000 min
Response: 1051639
Conc: 500.00 ng/ml

Instrument :
ECD_O
ClientSampled :
AR1262ICC500



#40 AR-1262-5

R.T.: 8.772 min
Delta R.T.: 0.000 min
Response: 874544
Conc: 500.00 ng/ml