

Data Path : Z:\pestpcbsrv\HPCHEM1\ECD_0\Data\P0110420\
 Data File : PO073095.D
 Signal(s) : Signal #1: ECD1A.CH Signal #2: ECD2B.CH
 Acq On : 04 Nov 2020 19:01
 Operator : DD\AJ
 Sample : AR1242ICV500
 Misc :
 ALS Vial : 33 Sample Multiplier: 1

Instrument :
 ECD_0
 ClientSampleId :
 ICVPO110520

Integration File signal 1: autoint1.e
 Integration File signal 2: autoint2.e
 Quant Time: Nov 05 05:48:30 2020
 Quant Method : Z:\pestpcbsrv\HPCHEM1\ECD_0\methods\P0110420.M
 Quant Title : GC EXTRACTABLES
 QLast Update : Thu Nov 05 05:38:46 2020
 Response via : Initial Calibration
 Integrator: ChemStation 6890 Scale Mode: Small noise peaks clipped

Volume Inj. : 2 µl
 Signal #1 Phase : ZB-MR1 Signal #2 Phase: ZB-MR2
 Signal #1 Info : 30Mx0.32mmx 0.50µ Signal #2 Info : 30M x 0.32mm x 0.25µm

Compound	RT#1	RT#2	Resp#1	Resp#2	ng/ml	ng/ml
System Monitoring Compounds						
1) SA Tetrachlo...	4.948	4.022	2968571	1874191	56.012	52.448
2) SA Decachlor...	10.973	9.297	2367510	1880115	57.210	56.355
Target Compounds						
3) L1 AR-1016-1	6.270	5.273	899258	605697	453.359	411.287
4) L1 AR-1016-2	6.294	5.294	1209048	810539	441.022	407.406
5) L1 AR-1016-3	6.360	5.483	754695	434325	452.835	456.377
6) L1 AR-1016-4	6.468	5.536	615352	353824	456.510	420.115
7) L1 AR-1016-5	6.784	5.763	591457	481616	521.377	446.916
8) L2 AR-1221-1	5.192	4.276	91989	62747	133.554	132.390
9) L2 AR-1221-2	5.298	4.376	142594	92614	280.275	258.625
10) L2 AR-1221-3	5.384	4.465	470220	320921	300.599	292.468
11) L3 AR-1232-1	5.384	4.465	470220	320921	375.539	372.827
12) L3 AR-1232-2	5.974	5.294	590847	810539	954.896	917.668
13) L3 AR-1232-3	6.294	5.483	1209048	434325	961.083	1017.797
14) L3 AR-1232-4	6.468	5.580	615352	444593	1008.654	1055.889
15) L3 AR-1232-5	6.566	5.763	468083	481616	1118.373	1075.846
16) L4 AR-1242-1	6.270	5.273	899258	605697	517.241	484.339
17) L4 AR-1242-2	6.294	5.294	1209048	810539	504.784	486.516
18) L4 AR-1242-3	6.360	5.483	754695	434325	515.424	521.038
19) L4 AR-1242-4	6.468	5.580	615352	444593	510.675	507.226
20) L4 AR-1242-5	7.252	6.140	666609	577284	509.299	507.747
21) L5 AR-1248-1	6.270	5.273	899258	605697	667.921	646.056
22) L5 AR-1248-2	6.566	5.536	468083	353824	269.819	273.181
23) L5 AR-1248-3	6.784	5.580	591457	444593	315.471	329.055
24) L5 AR-1248-4	7.213	5.763	651290	481616	269.384	303.684
25) L5 AR-1248-5	7.252	6.183	666609	493223	290.398	309.755
26) L6 AR-1254-1	7.182	6.140	494628	577284	211.403	240.272
27) L6 AR-1254-2	7.418	6.299	576182	148113	163.522	69.204 #
28) L6 AR-1254-3	7.795	6.717	222777	189641	61.946	56.370
29) L6 AR-1254-4	8.092	6.954	195466	147368	64.954	66.356
30) L6 AR-1254-5	8.521	7.382	43545	52255	15.043	17.214
31) L7 AR-1260-1	0.000	6.863	0	71375	N.D.	35.527 #
32) L7 AR-1260-2	8.228	7.049	48845	18668	18.030	7.522 #
33) L7 AR-1260-3	0.000	7.201	0	25563	N.D.	11.326 #
34) L7 AR-1260-4	8.818	0.000	41091	0	18.001	N.D. #
36) L8 AR-1262-1	0.000	7.382	0	52255	N.D.	33.555 #
39) L8 AR-1262-4	9.533f	0.000	128858	0	40.071	N.D. #
42) L9 AR-1268-2	9.533f	0.000	128858	0	19.889	N.D. #
43) L9 AR-1268-3	9.784	0.000	182166	0	32.614	N.D. #
45) L9 AR-1268-5	10.638	0.000	94750	0	5.858	N.D. #

Data Path : Z:\pestpcbsrv\HPCHEM1\ECD_0\Data\PO110420\
Data File : PO073095.D
Signal(s) : Signal #1: ECD1A.CH Signal #2: ECD2B.CH
Acq On : 04 Nov 2020 19:01
Operator : DD\AJ
Sample : AR1242ICV500
Misc :
ALS Vial : 33 Sample Multiplier: 1

Instrument :
ECD_O
ClientSampleId :
ICVPO110520

Integration File signal 1: autoint1.e
Integration File signal 2: autoint2.e
Quant Time: Nov 05 05:48:30 2020
Quant Method : Z:\pestpcbsrv\HPCHEM1\ECD_0\methods\PO110420.M
Quant Title : GC EXTRACTABLES
QLast Update : Thu Nov 05 05:38:46 2020
Response via : Initial Calibration
Integrator: ChemStation 6890 Scale Mode: Small noise peaks clipped

Volume Inj. : 2 µl
Signal #1 Phase : ZB-MR1 Signal #2 Phase: ZB-MR2
Signal #1 Info : 30Mx0.32mmx 0.50µ Signal #2 Info : 30M x 0.32mm x 0.25µm

Compound	RT#1	RT#2	Resp#1	Resp#2	ng/ml	ng/ml
----------	------	------	--------	--------	-------	-------

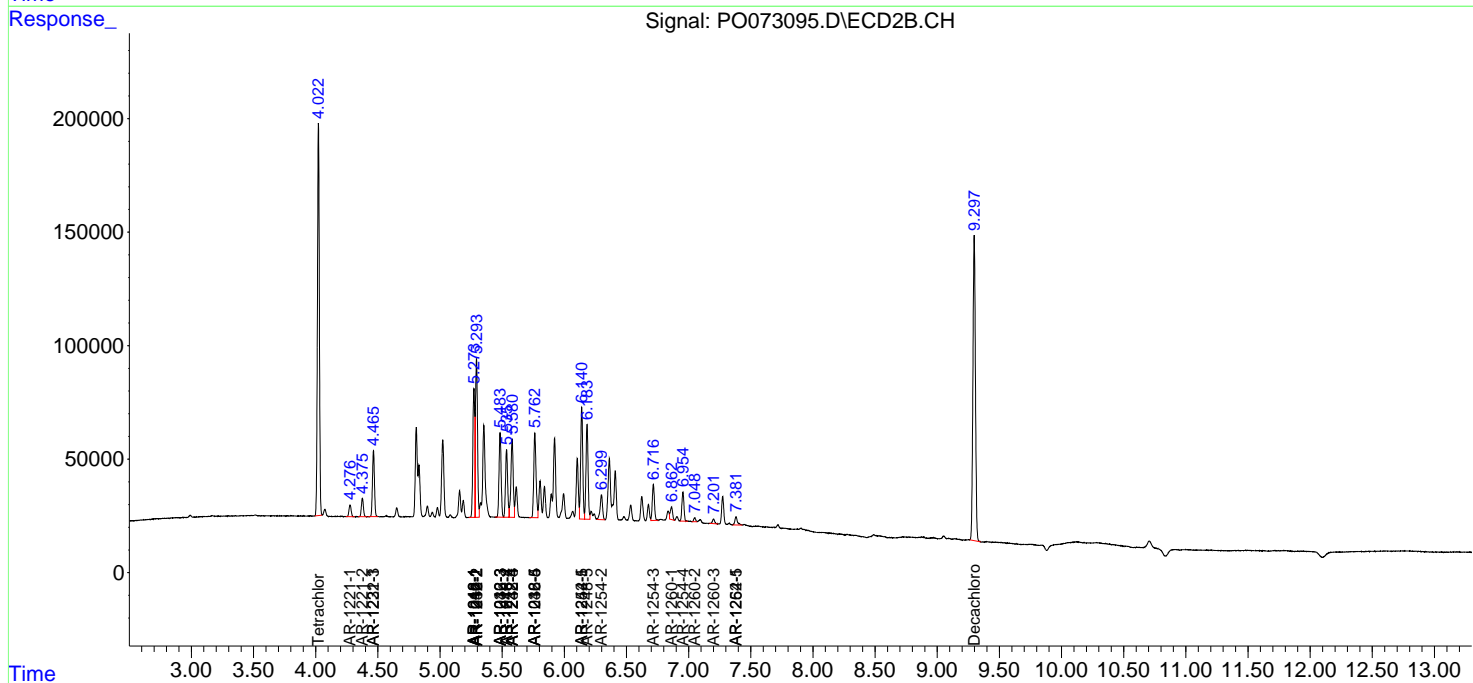
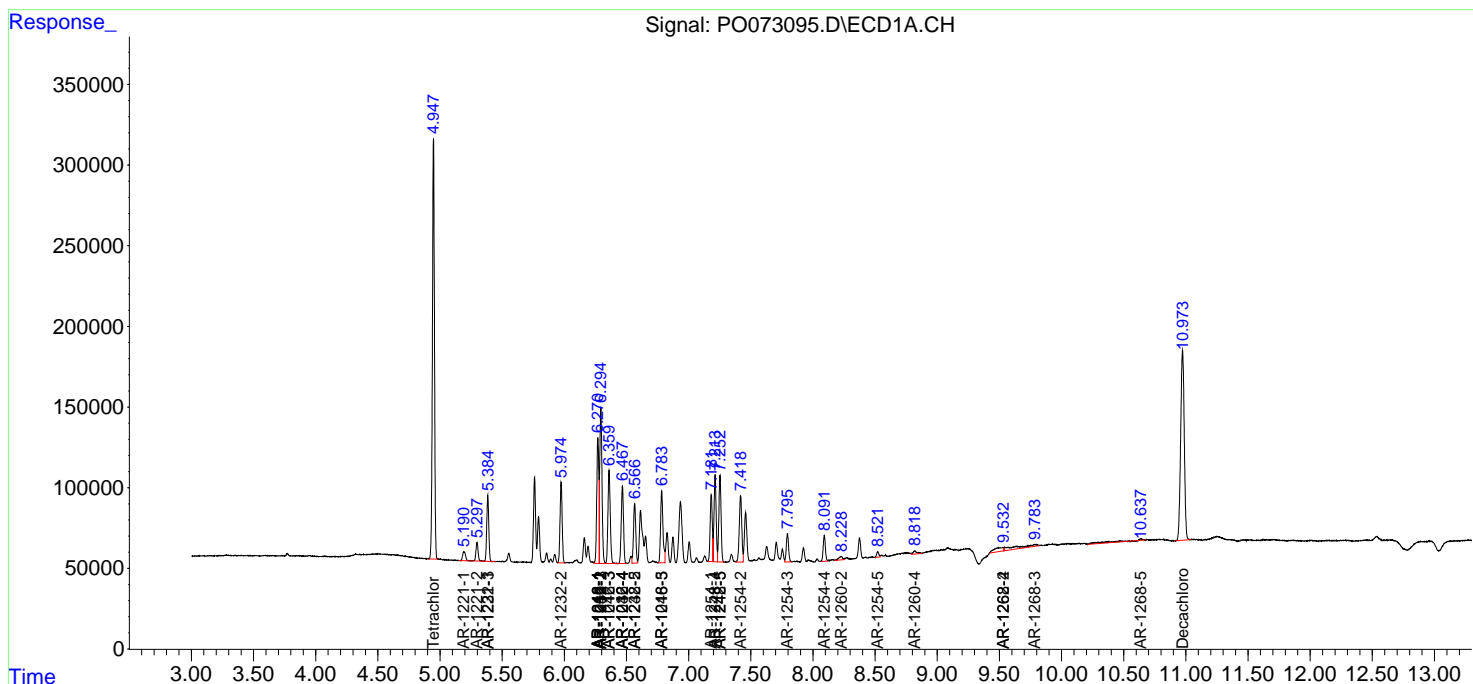
(f)=RT Delta > 1/2 Window (#)=Amounts differ by > 25% (m)=manual int.

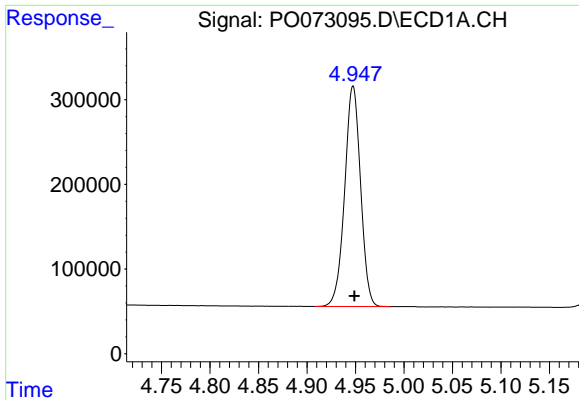
Data Path : Z:\pestpcbsrv\HPCHEM1\ECD_0\Data\PO110420\
 Data File : PO073095.D
 Signal(s) : Signal #1: ECD1A.CH Signal #2: ECD2B.CH
 Acq On : 04 Nov 2020 19:01
 Operator : DD\AJ
 Sample : AR1242ICV500
 Misc :
 ALS Vial : 33 Sample Multiplier: 1

Instrument :
 ECD_O
 Client Sampled :
 ICVPO110520

Integration File signal 1: autoint1.e
 Integration File signal 2: autoint2.e
 Quant Time: Nov 05 05:48:30 2020
 Quant Method : Z:\pestpcbsrv\HPCHEM1\ECD_0\methods\PO110420.M
 Quant Title : GC EXTRACTABLES
 QLast Update : Thu Nov 05 05:38:46 2020
 Response via : Initial Calibration
 Integrator: ChemStation 6890 Scale Mode: Small noise peaks clipped

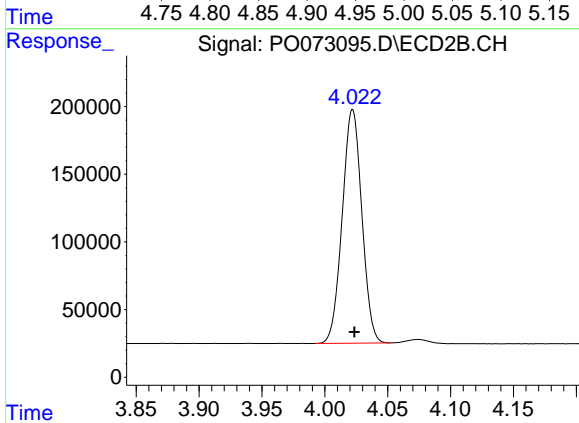
Volume Inj. : 2 µl
 Signal #1 Phase : ZB-MR1 Signal #2 Phase: ZB-MR2
 Signal #1 Info : 30Mx0.32mmx 0.50µ Signal #2 Info : 30M x 0.32mm x 0.25µm



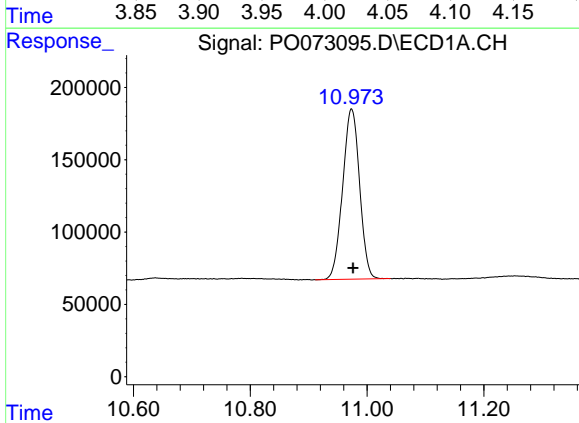


#1 Tetrachloro-m-xylene
 R.T.: 4.948 min
 Delta R.T.: -0.001 min
 Response: 2968571
 Conc: 56.01 ng/ml

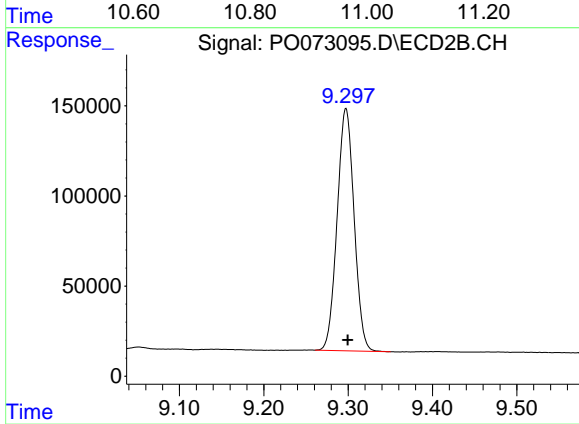
Instrument :
 ECD_O
 ClientSampleId :
 ICVPO110520



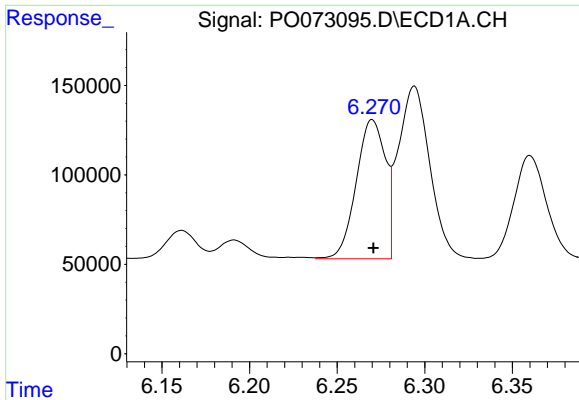
#1 Tetrachloro-m-xylene
 R.T.: 4.022 min
 Delta R.T.: -0.001 min
 Response: 1874191
 Conc: 52.45 ng/ml



#2 Decachlorobiphenyl
 R.T.: 10.973 min
 Delta R.T.: -0.003 min
 Response: 2367510
 Conc: 57.21 ng/ml



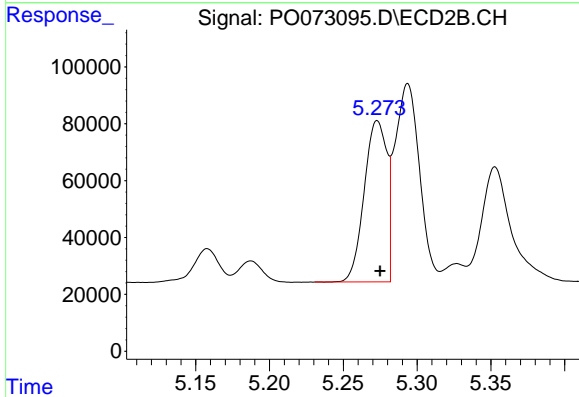
#2 Decachlorobiphenyl
 R.T.: 9.297 min
 Delta R.T.: -0.002 min
 Response: 1880115
 Conc: 56.35 ng/ml



#3 AR-1016-1

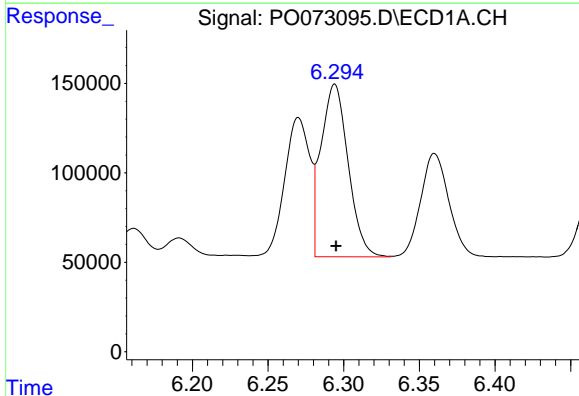
R.T.: 6.270 min
 Delta R.T.: 0.000 min
 Response: 899258
 Conc: 453.36 ng/ml

Instrument :
 ECD_O
 ClientSampled :
 ICVPO110520



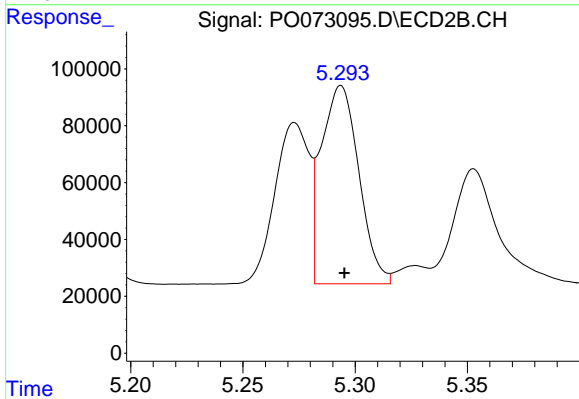
#3 AR-1016-1

R.T.: 5.273 min
 Delta R.T.: -0.002 min
 Response: 605697
 Conc: 411.29 ng/ml



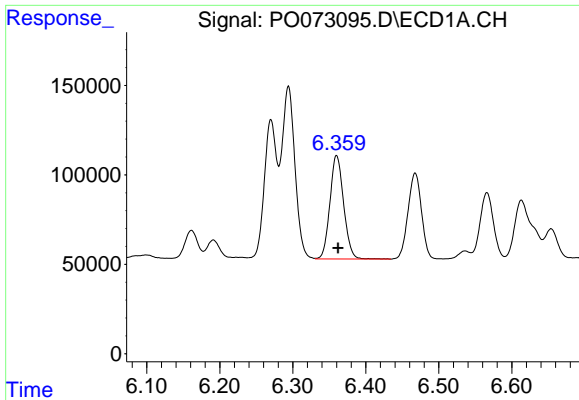
#4 AR-1016-2

R.T.: 6.294 min
 Delta R.T.: 0.000 min
 Response: 1209048
 Conc: 441.02 ng/ml



#4 AR-1016-2

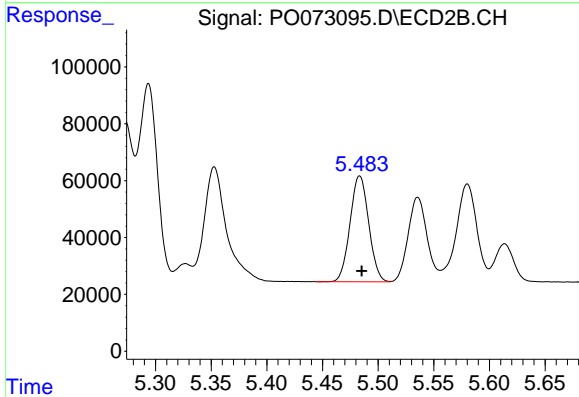
R.T.: 5.294 min
 Delta R.T.: -0.002 min
 Response: 810539
 Conc: 407.41 ng/ml



#5 AR-1016-3

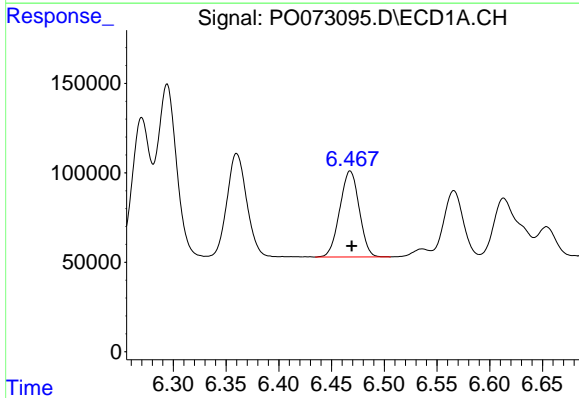
R.T.: 6.360 min
 Delta R.T.: -0.002 min
 Response: 754695
 Conc: 452.84 ng/ml

Instrument :
 ECD_O
 ClientSampleId :
 ICVPO110520



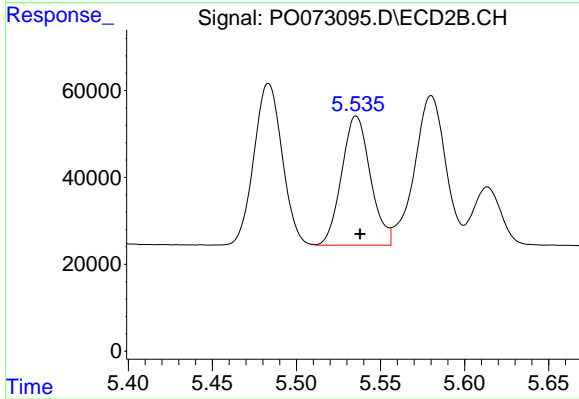
#5 AR-1016-3

R.T.: 5.483 min
 Delta R.T.: -0.002 min
 Response: 434325
 Conc: 456.38 ng/ml



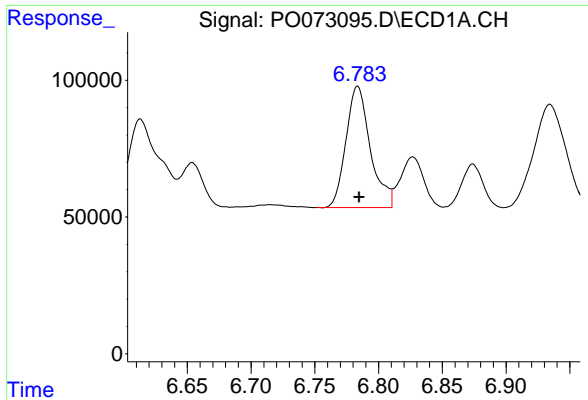
#6 AR-1016-4

R.T.: 6.468 min
 Delta R.T.: -0.001 min
 Response: 615352
 Conc: 456.51 ng/ml



#6 AR-1016-4

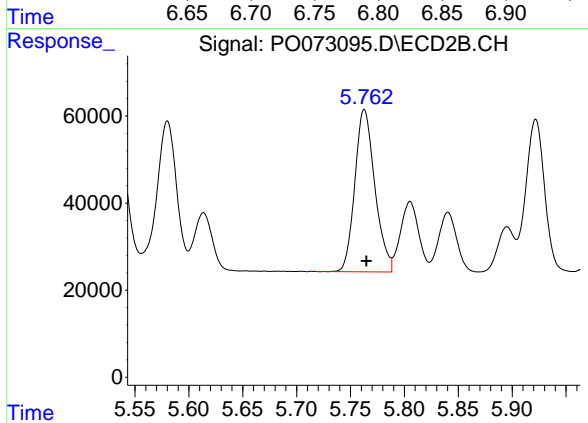
R.T.: 5.536 min
 Delta R.T.: -0.002 min
 Response: 353824
 Conc: 420.11 ng/ml



#7 AR-1016-5

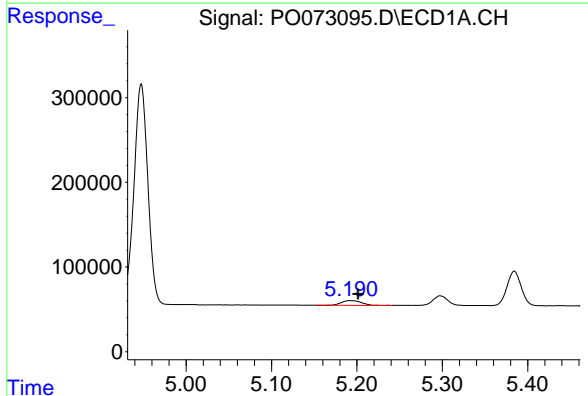
R.T.: 6.784 min
 Delta R.T.: -0.001 min
 Response: 591457
 Conc: 521.38 ng/ml

Instrument :
 ECD_O
 ClientSampleId :
 ICVPO110520



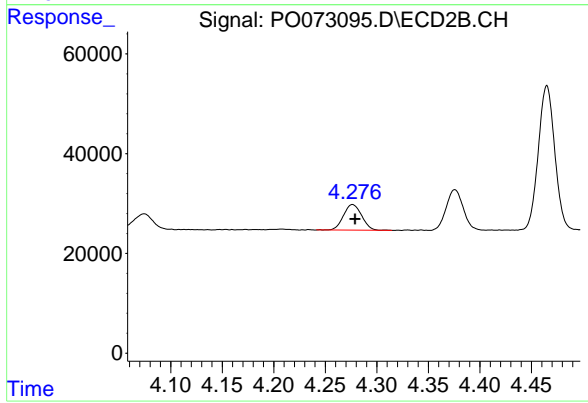
#7 AR-1016-5

R.T.: 5.763 min
 Delta R.T.: -0.002 min
 Response: 481616
 Conc: 446.92 ng/ml



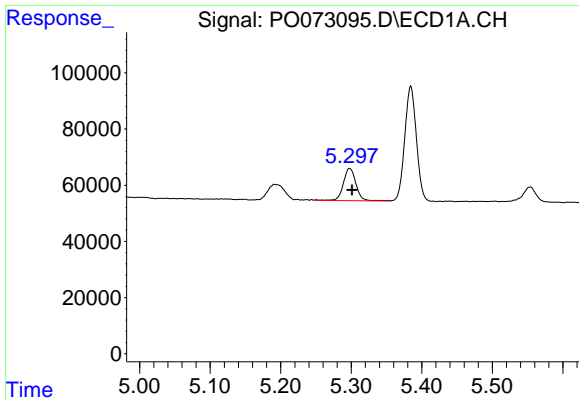
#8 AR-1221-1

R.T.: 5.192 min
 Delta R.T.: -0.010 min
 Response: 91989
 Conc: 133.55 ng/ml



#8 AR-1221-1

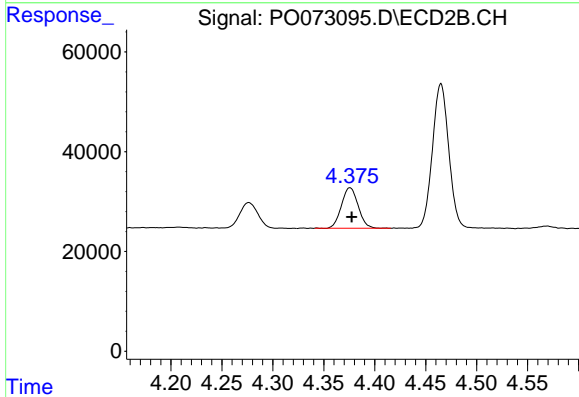
R.T.: 4.276 min
 Delta R.T.: -0.002 min
 Response: 62747
 Conc: 132.39 ng/ml



#9 AR-1221-2

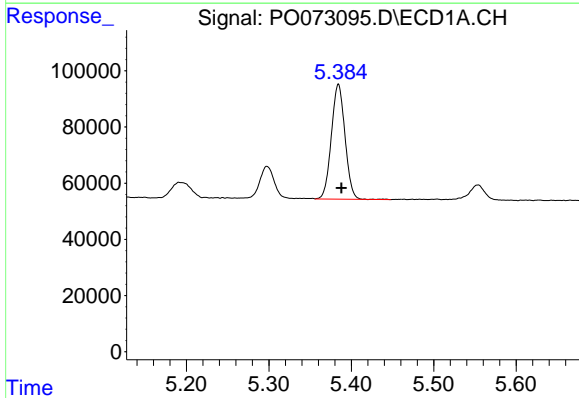
R.T.: 5.298 min
 Delta R.T.: -0.003 min
 Response: 142594
 Conc: 280.27 ng/ml

Instrument :
 ECD_O
 ClientSampleId :
 ICVPO110520



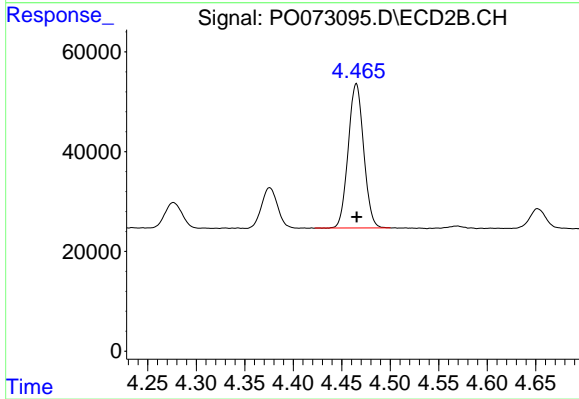
#9 AR-1221-2

R.T.: 4.376 min
 Delta R.T.: -0.002 min
 Response: 92614
 Conc: 258.62 ng/ml



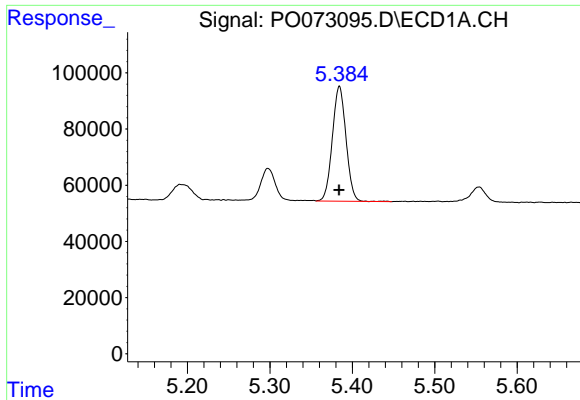
#10 AR-1221-3

R.T.: 5.384 min
 Delta R.T.: -0.004 min
 Response: 470220
 Conc: 300.60 ng/ml



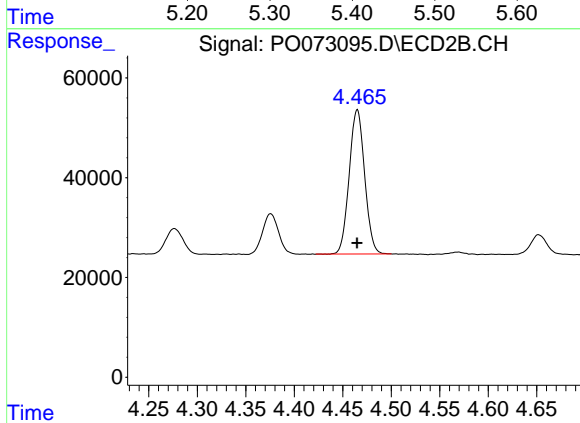
#10 AR-1221-3

R.T.: 4.465 min
 Delta R.T.: 0.000 min
 Response: 320921
 Conc: 292.47 ng/ml

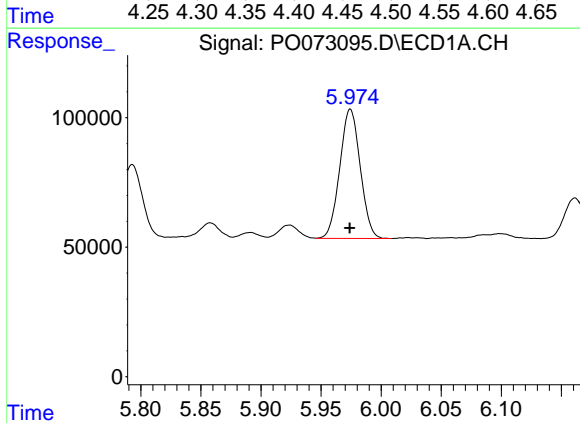


#11 AR-1232-1
 R.T.: 5.384 min
 Delta R.T.: 0.000 min
 Response: 470220
 Conc: 375.54 ng/ml

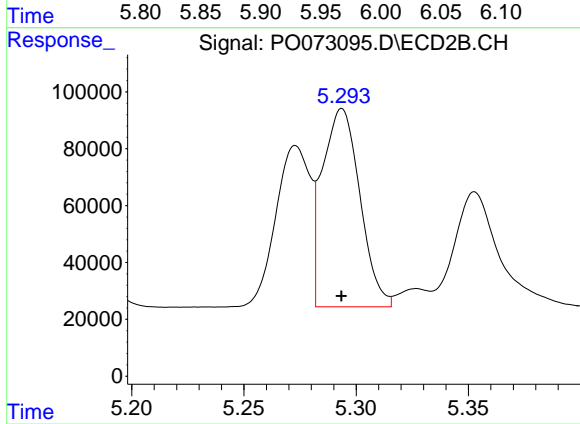
Instrument :
 ECD_O
 ClientSampled :
 ICVPO110520



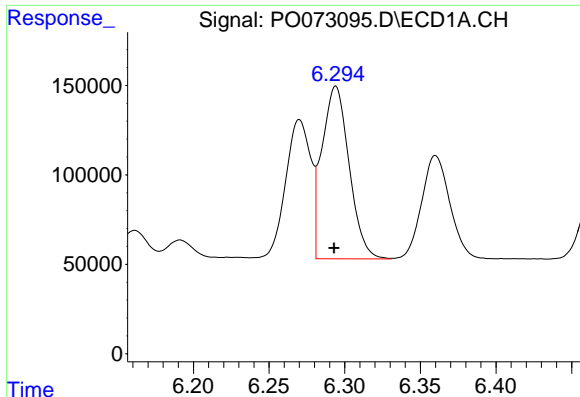
#11 AR-1232-1
 R.T.: 4.465 min
 Delta R.T.: 0.000 min
 Response: 320921
 Conc: 372.83 ng/ml



#12 AR-1232-2
 R.T.: 5.974 min
 Delta R.T.: 0.000 min
 Response: 590847
 Conc: 954.90 ng/ml



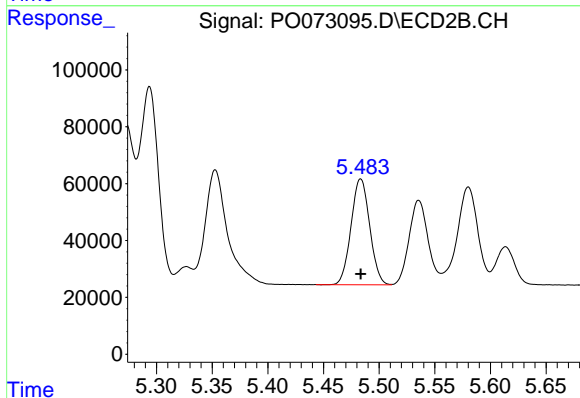
#12 AR-1232-2
 R.T.: 5.294 min
 Delta R.T.: 0.000 min
 Response: 810539
 Conc: 917.67 ng/ml



#13 AR-1232-3

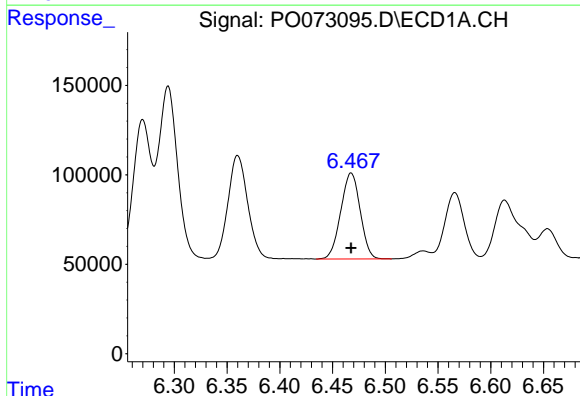
R.T.: 6.294 min
 Delta R.T.: 0.001 min
 Response: 1209048
 Conc: 961.08 ng/ml

Instrument :
 ECD_O
 ClientSampleId :
 ICVPO110520



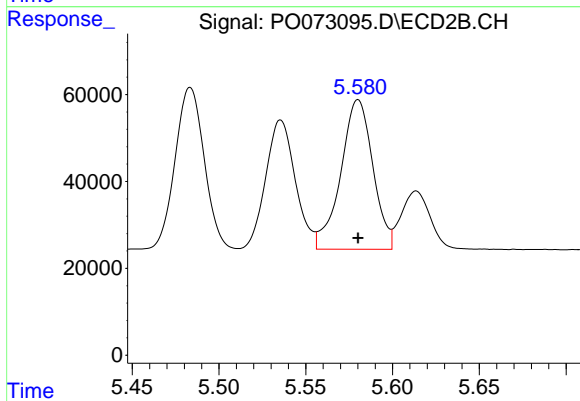
#13 AR-1232-3

R.T.: 5.483 min
 Delta R.T.: 0.000 min
 Response: 434325
 Conc: 1017.80 ng/ml



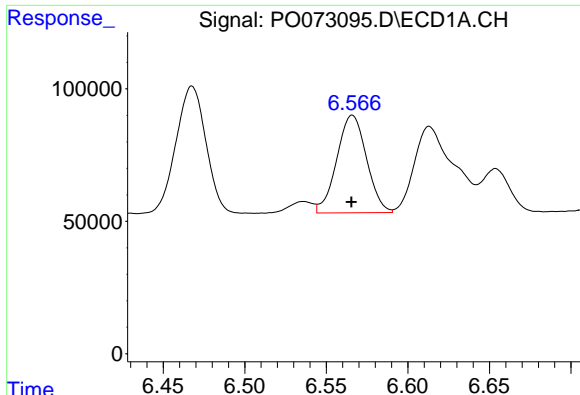
#14 AR-1232-4

R.T.: 6.468 min
 Delta R.T.: 0.000 min
 Response: 615352
 Conc: 1008.65 ng/ml



#14 AR-1232-4

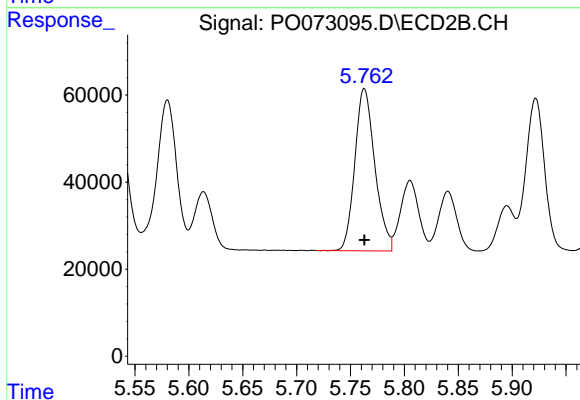
R.T.: 5.580 min
 Delta R.T.: 0.000 min
 Response: 444593
 Conc: 1055.89 ng/ml



#15 AR-1232-5

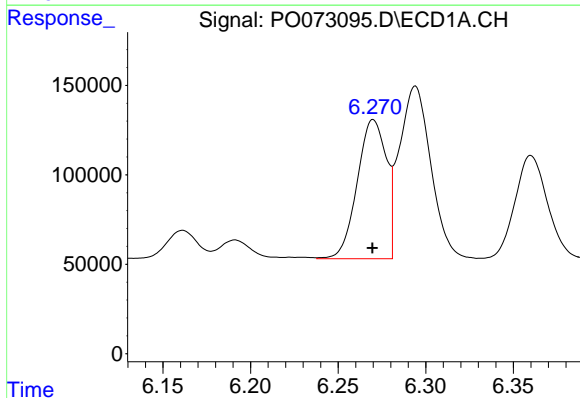
R.T.: 6.566 min
 Delta R.T.: 0.000 min
 Response: 468083
 Conc: 1118.37 ng/ml

Instrument :
 ECD_O
 ClientSampleId :
 ICVPO110520



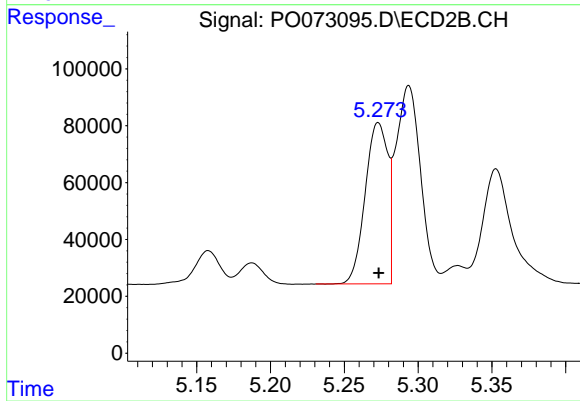
#15 AR-1232-5

R.T.: 5.763 min
 Delta R.T.: 0.000 min
 Response: 481616
 Conc: 1075.85 ng/ml



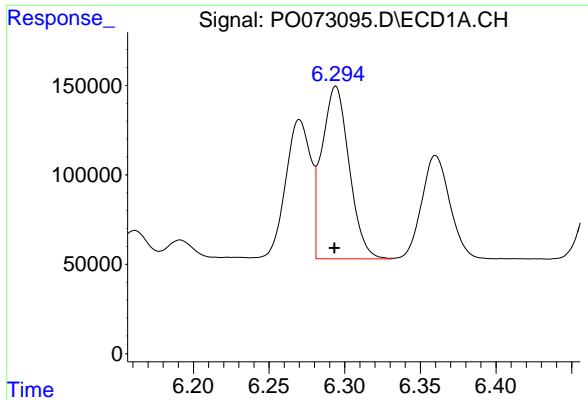
#16 AR-1242-1

R.T.: 6.270 min
 Delta R.T.: 0.000 min
 Response: 899258
 Conc: 517.24 ng/ml



#16 AR-1242-1

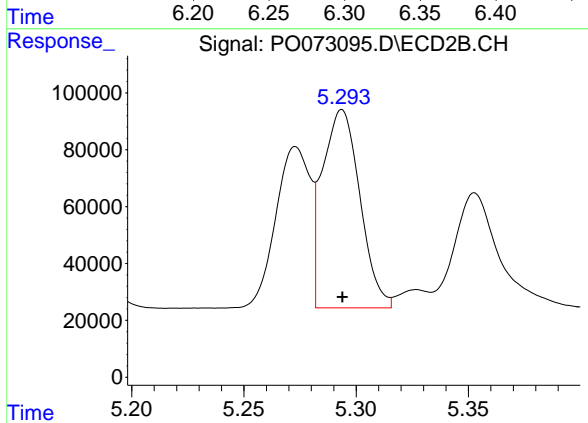
R.T.: 5.273 min
 Delta R.T.: 0.000 min
 Response: 605697
 Conc: 484.34 ng/ml



#17 AR-1242-2

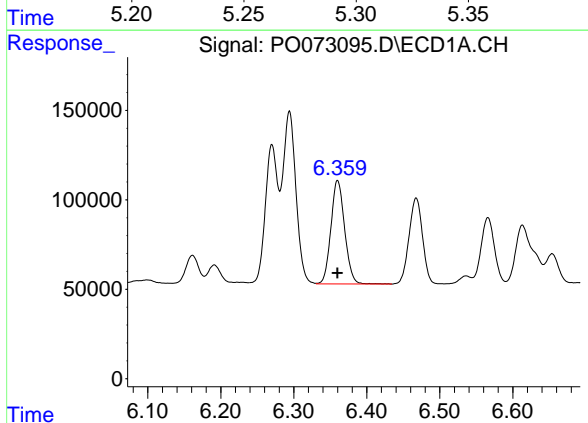
R.T.: 6.294 min
 Delta R.T.: 0.000 min
 Response: 1209048
 Conc: 504.78 ng/ml

Instrument :
 ECD_O
 ClientSampleId :
 ICVPO110520



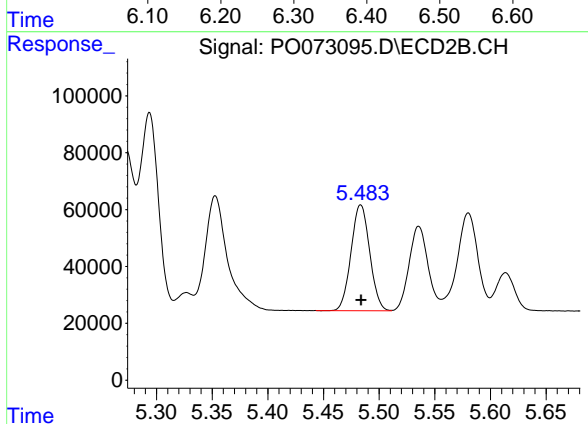
#17 AR-1242-2

R.T.: 5.294 min
 Delta R.T.: 0.000 min
 Response: 810539
 Conc: 486.52 ng/ml



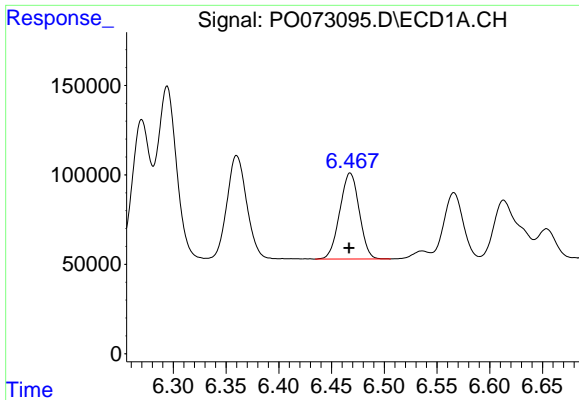
#18 AR-1242-3

R.T.: 6.360 min
 Delta R.T.: 0.000 min
 Response: 754695
 Conc: 515.42 ng/ml



#18 AR-1242-3

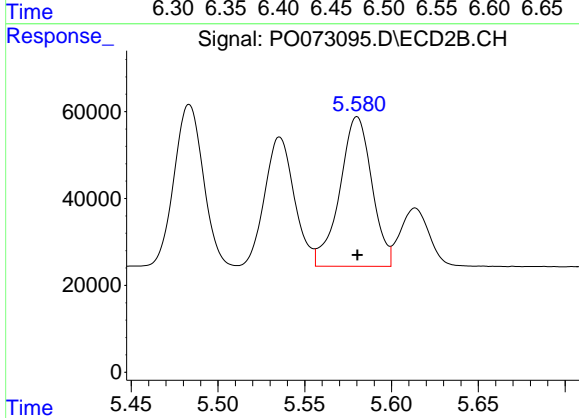
R.T.: 5.483 min
 Delta R.T.: 0.000 min
 Response: 434325
 Conc: 521.04 ng/ml



#19 AR-1242-4

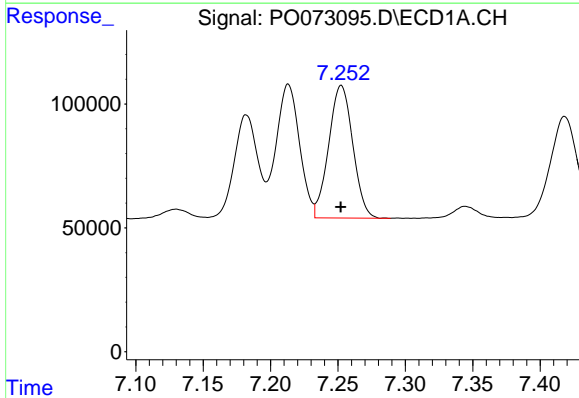
R.T.: 6.468 min
 Delta R.T.: 0.001 min
 Response: 615352
 Conc: 510.67 ng/ml

Instrument :
 ECD_O
 ClientSampled :
 ICVPO110520



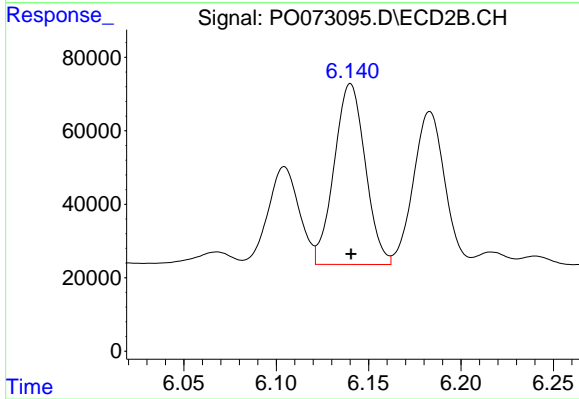
#19 AR-1242-4

R.T.: 5.580 min
 Delta R.T.: 0.000 min
 Response: 444593
 Conc: 507.23 ng/ml



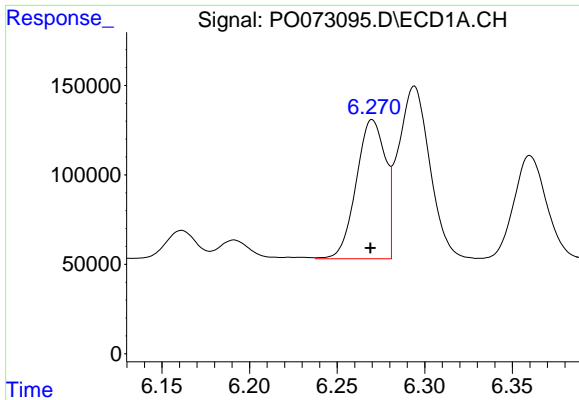
#20 AR-1242-5

R.T.: 7.252 min
 Delta R.T.: 0.000 min
 Response: 666609
 Conc: 509.30 ng/ml



#20 AR-1242-5

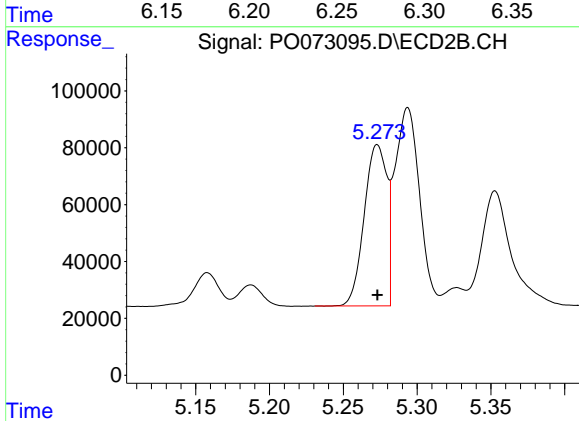
R.T.: 6.140 min
 Delta R.T.: 0.000 min
 Response: 577284
 Conc: 507.75 ng/ml



#21 AR-1248-1

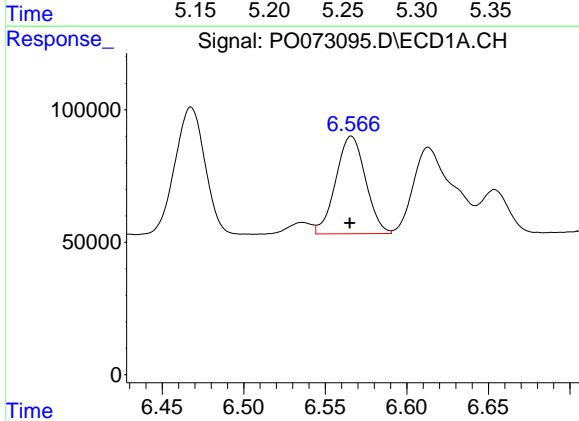
R.T.: 6.270 min
 Delta R.T.: 0.001 min
 Response: 899258
 Conc: 667.92 ng/ml

Instrument :
 ECD_O
 ClientSampleId :
 ICVPO110520



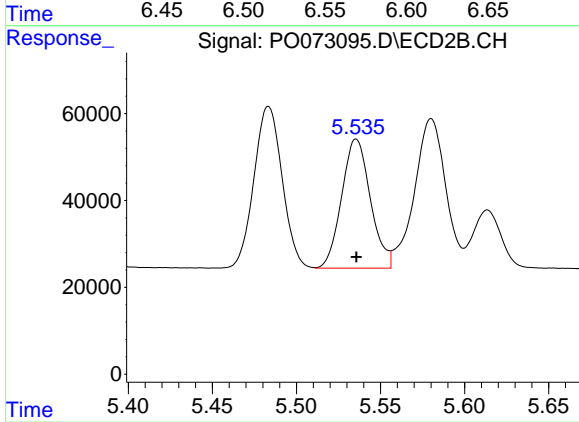
#21 AR-1248-1

R.T.: 5.273 min
 Delta R.T.: 0.000 min
 Response: 605697
 Conc: 646.06 ng/ml



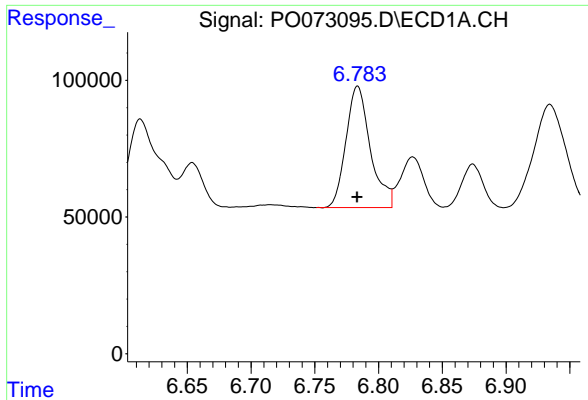
#22 AR-1248-2

R.T.: 6.566 min
 Delta R.T.: 0.000 min
 Response: 468083
 Conc: 269.82 ng/ml



#22 AR-1248-2

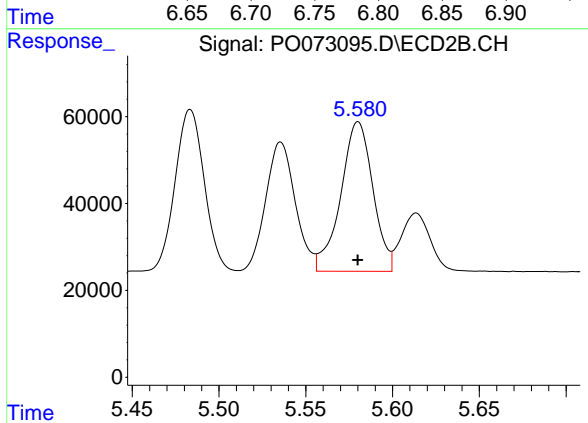
R.T.: 5.536 min
 Delta R.T.: 0.000 min
 Response: 353824
 Conc: 273.18 ng/ml



#23 AR-1248-3

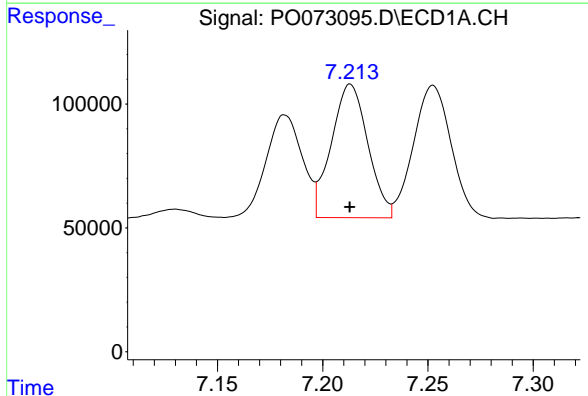
R.T.: 6.784 min
 Delta R.T.: 0.000 min
 Response: 591457
 Conc: 315.47 ng/ml

Instrument :
 ECD_O
 ClientSampleId :
 ICVPO110520



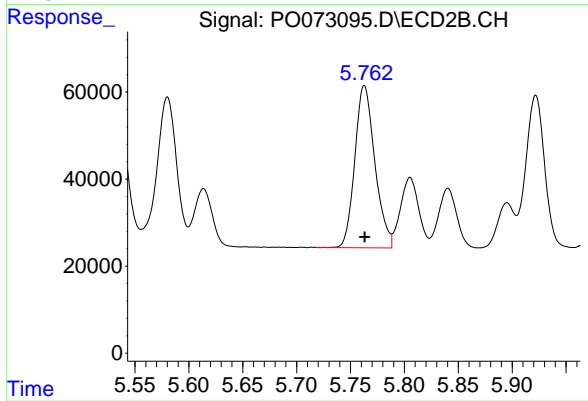
#23 AR-1248-3

R.T.: 5.580 min
 Delta R.T.: 0.000 min
 Response: 444593
 Conc: 329.06 ng/ml



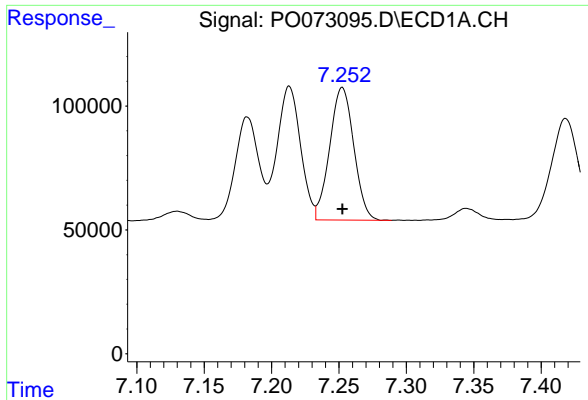
#24 AR-1248-4

R.T.: 7.213 min
 Delta R.T.: 0.000 min
 Response: 651290
 Conc: 269.38 ng/ml



#24 AR-1248-4

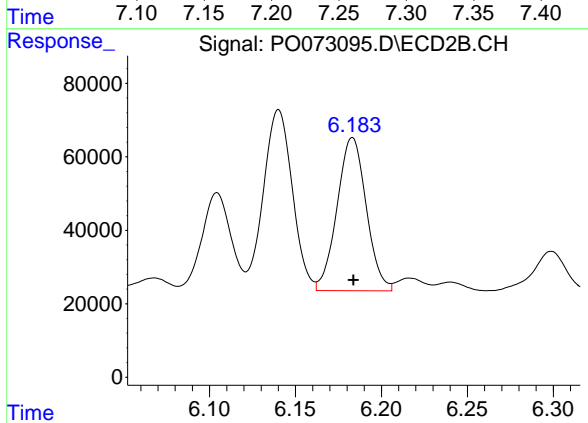
R.T.: 5.763 min
 Delta R.T.: 0.000 min
 Response: 481616
 Conc: 303.68 ng/ml



#25 AR-1248-5

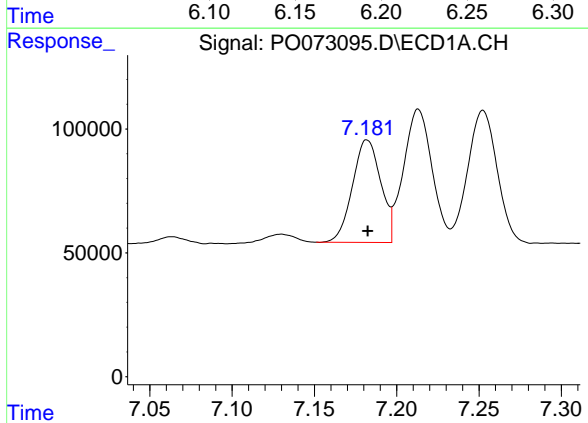
R.T.: 7.252 min
 Delta R.T.: 0.000 min
 Response: 666609
 Conc: 290.40 ng/ml

Instrument :
 ECD_O
 ClientSampleId :
 ICVPO110520



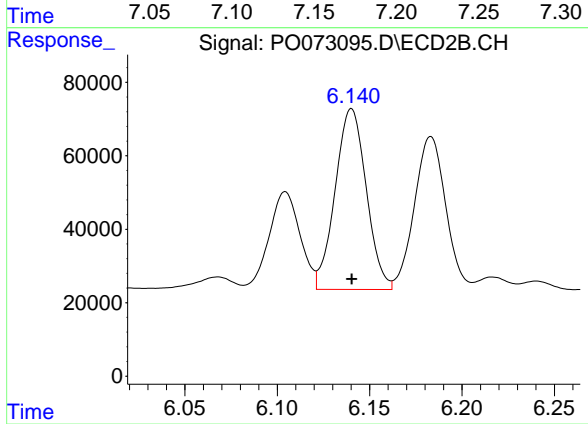
#25 AR-1248-5

R.T.: 6.183 min
 Delta R.T.: 0.000 min
 Response: 493223
 Conc: 309.76 ng/ml



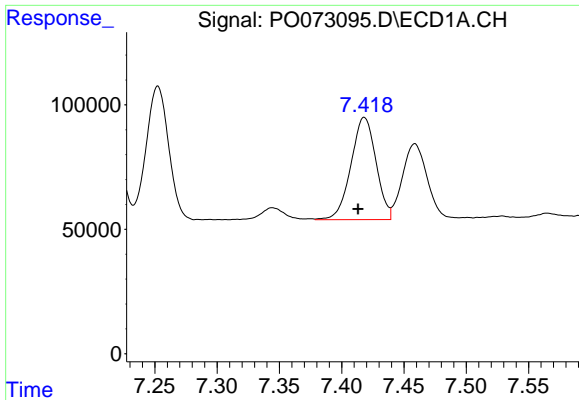
#26 AR-1254-1

R.T.: 7.182 min
 Delta R.T.: 0.000 min
 Response: 494628
 Conc: 211.40 ng/ml



#26 AR-1254-1

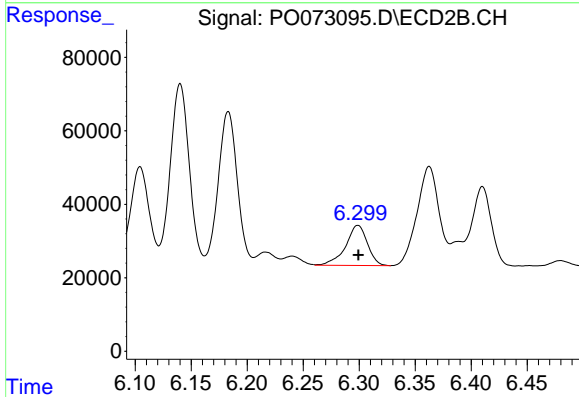
R.T.: 6.140 min
 Delta R.T.: 0.000 min
 Response: 577284
 Conc: 240.27 ng/ml



#27 AR-1254-2

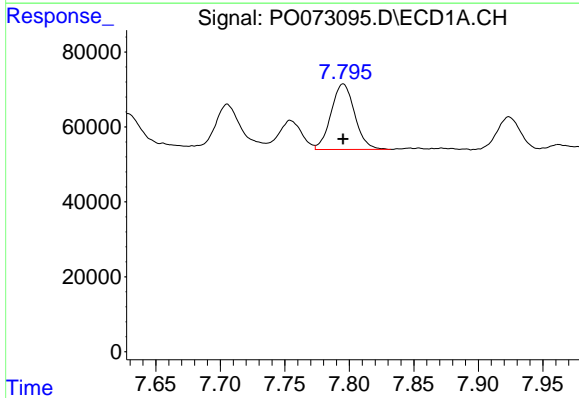
R.T.: 7.418 min
 Delta R.T.: 0.005 min
 Response: 576182
 Conc: 163.52 ng/ml

Instrument :
 ECD_O
 ClientSampleId :
 ICVPO110520



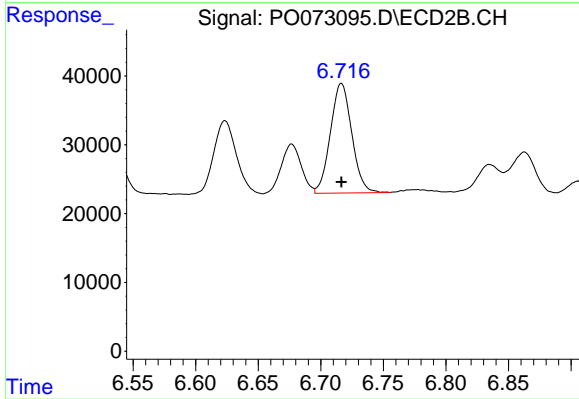
#27 AR-1254-2

R.T.: 6.299 min
 Delta R.T.: 0.000 min
 Response: 148113
 Conc: 69.20 ng/ml



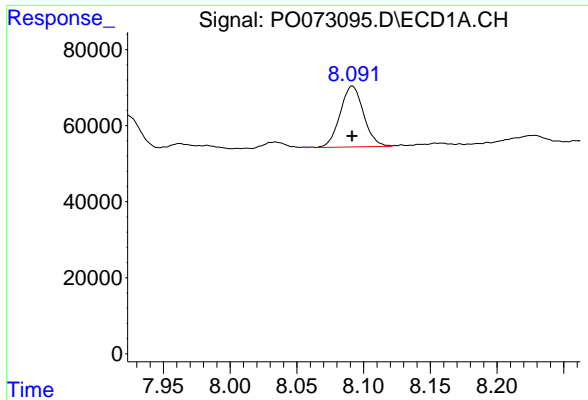
#28 AR-1254-3

R.T.: 7.795 min
 Delta R.T.: 0.000 min
 Response: 222777
 Conc: 61.95 ng/ml



#28 AR-1254-3

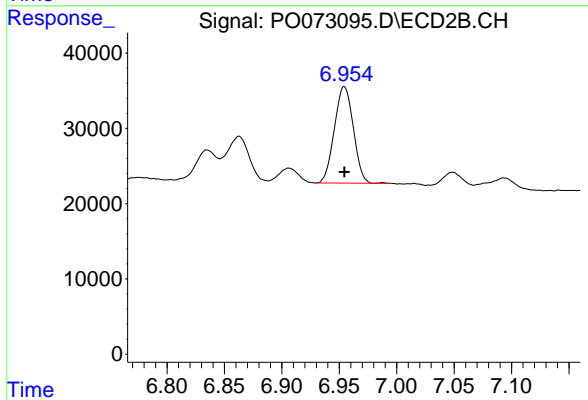
R.T.: 6.717 min
 Delta R.T.: 0.000 min
 Response: 189641
 Conc: 56.37 ng/ml



#29 AR-1254-4

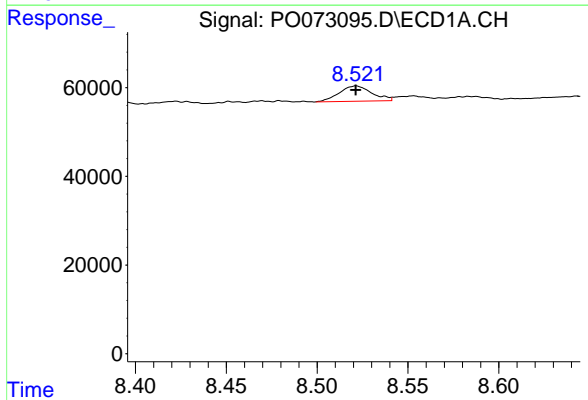
R.T.: 8.092 min
 Delta R.T.: 0.000 min
 Response: 195466
 Conc: 64.95 ng/ml

Instrument :
 ECD_O
 ClientSampleId :
 ICVPO110520



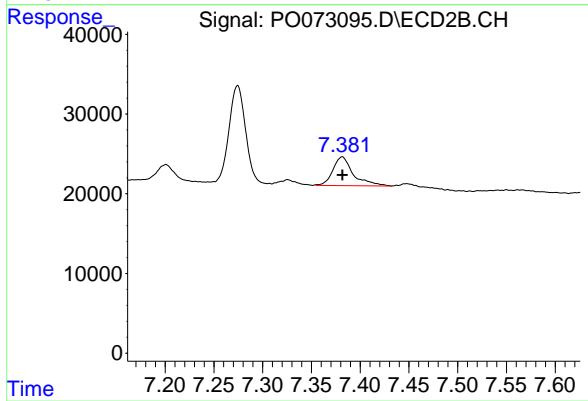
#29 AR-1254-4

R.T.: 6.954 min
 Delta R.T.: 0.000 min
 Response: 147368
 Conc: 66.36 ng/ml



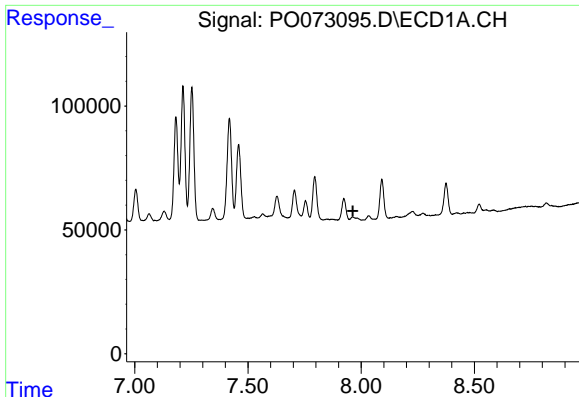
#30 AR-1254-5

R.T.: 8.521 min
 Delta R.T.: 0.000 min
 Response: 43545
 Conc: 15.04 ng/ml



#30 AR-1254-5

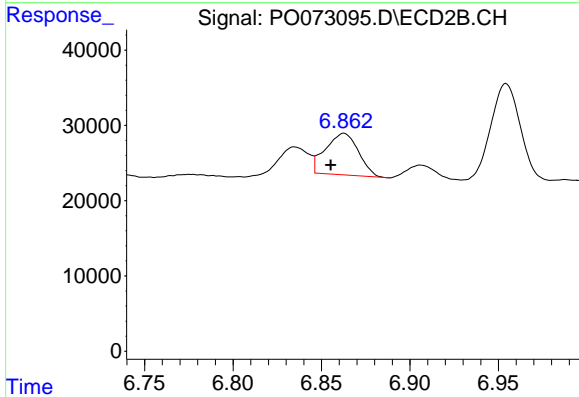
R.T.: 7.382 min
 Delta R.T.: 0.000 min
 Response: 52255
 Conc: 17.21 ng/ml



#31 AR-1260-1

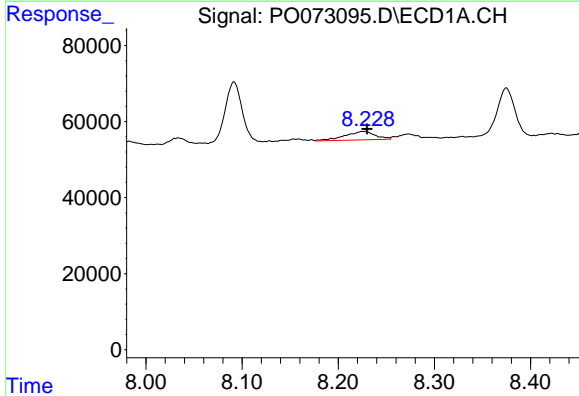
R.T.: 0.000 min
 Exp R.T.: 7.964 min
 Response: 0
 Conc: N.D.

Instrument :
 ECD_O
 ClientSampleId :
 ICVPO110520



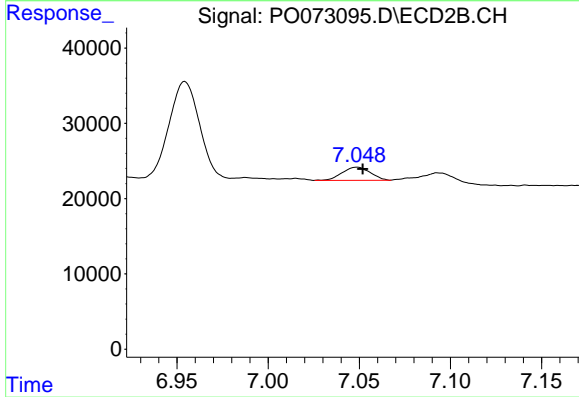
#31 AR-1260-1

R.T.: 6.863 min
 Delta R.T.: 0.008 min
 Response: 71375
 Conc: 35.53 ng/ml



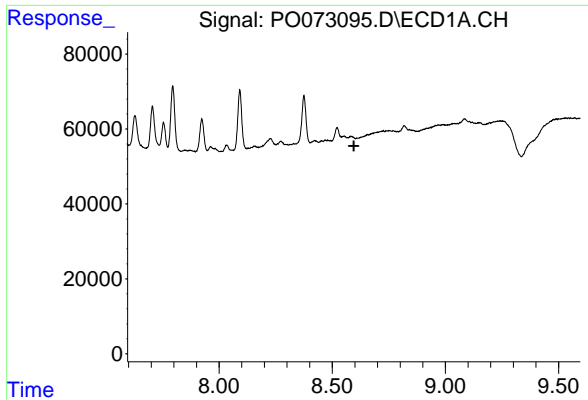
#32 AR-1260-2

R.T.: 8.228 min
 Delta R.T.: -0.002 min
 Response: 48845
 Conc: 18.03 ng/ml



#32 AR-1260-2

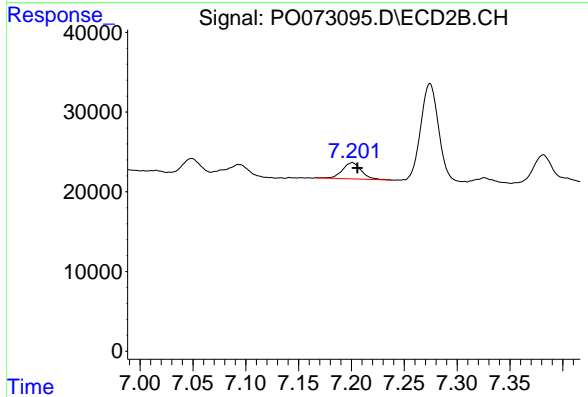
R.T.: 7.049 min
 Delta R.T.: -0.003 min
 Response: 18668
 Conc: 7.52 ng/ml



#33 AR-1260-3

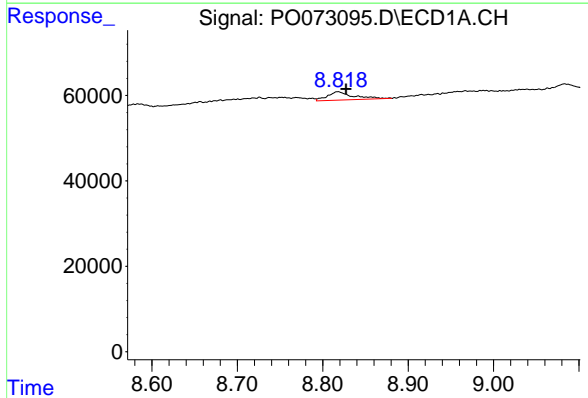
R.T.: 0.000 min
 Exp R.T.: 8.596 min
 Response: 0
 Conc: N.D.

Instrument :
 ECD_O
 ClientSampleId :
 ICVPO110520



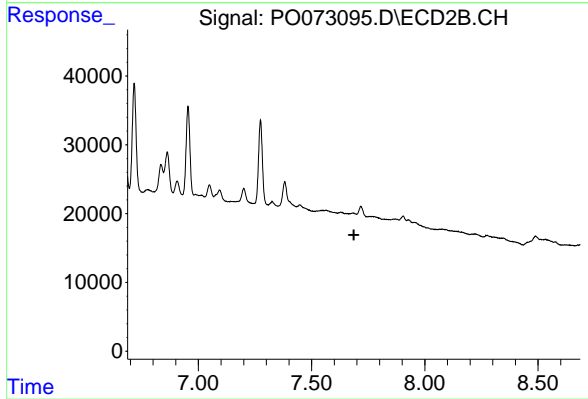
#33 AR-1260-3

R.T.: 7.201 min
 Delta R.T.: -0.005 min
 Response: 25563
 Conc: 11.33 ng/ml



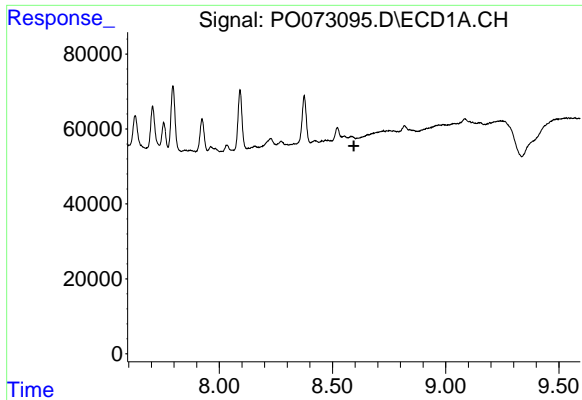
#34 AR-1260-4

R.T.: 8.818 min
 Delta R.T.: -0.010 min
 Response: 41091
 Conc: 18.00 ng/ml



#34 AR-1260-4

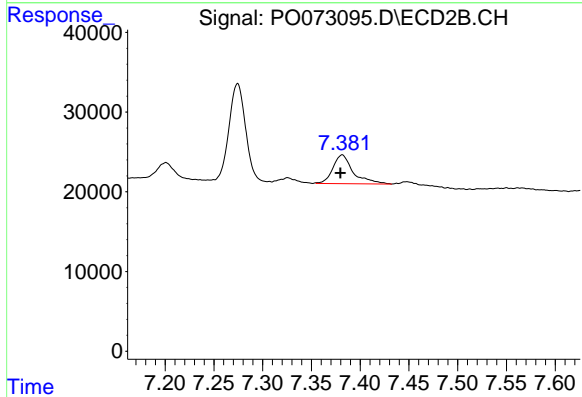
R.T.: 0.000 min
 Exp R.T.: 7.687 min
 Response: 0
 Conc: N.D.



#36 AR-1262-1

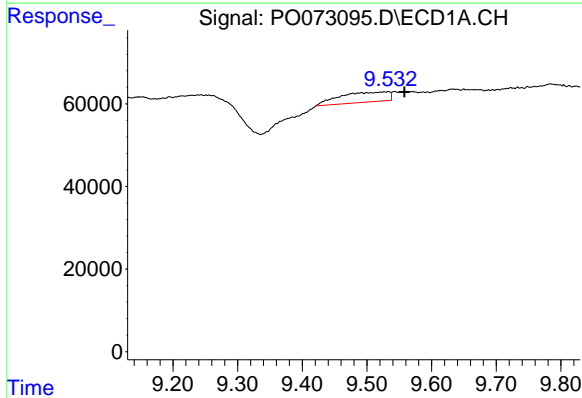
R.T.: 0.000 min
 Exp R.T.: 8.594 min
 Response: 0
 Conc: N.D.

Instrument :
 ECD_O
 ClientSampleId :
 ICVPO110520



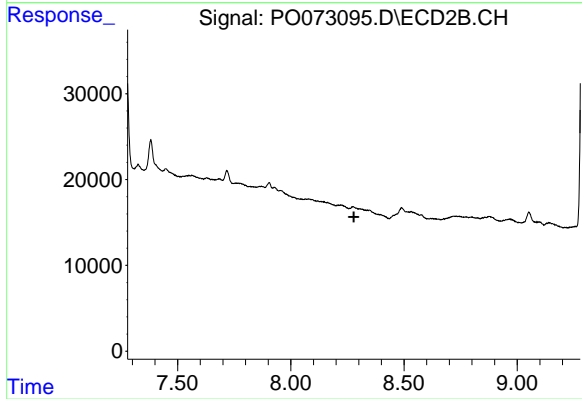
#36 AR-1262-1

R.T.: 7.382 min
 Delta R.T.: 0.002 min
 Response: 52255
 Conc: 33.55 ng/ml



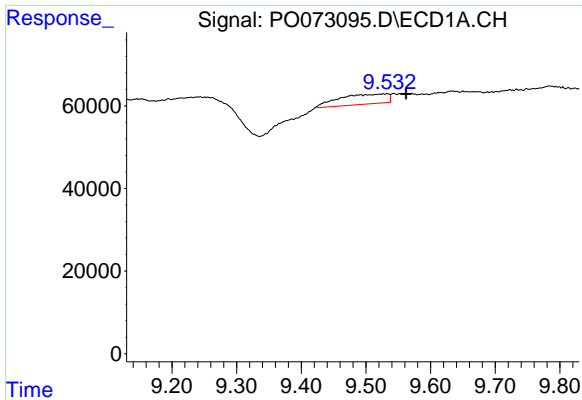
#39 AR-1262-4

R.T.: 9.533 min
 Delta R.T.: -0.025 min
 Response: 128858
 Conc: 40.07 ng/ml



#39 AR-1262-4

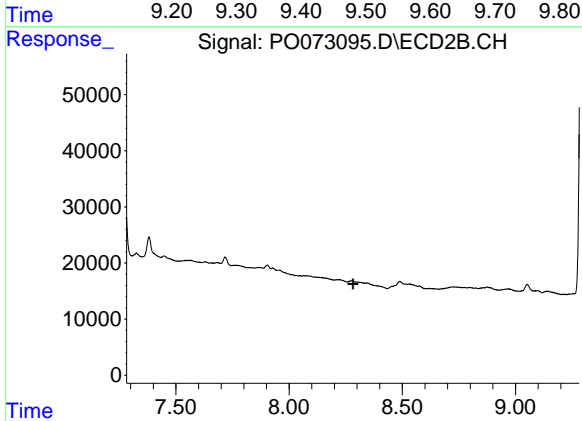
R.T.: 0.000 min
 Exp R.T.: 8.279 min
 Response: 0
 Conc: N.D.



#42 AR-1268-2

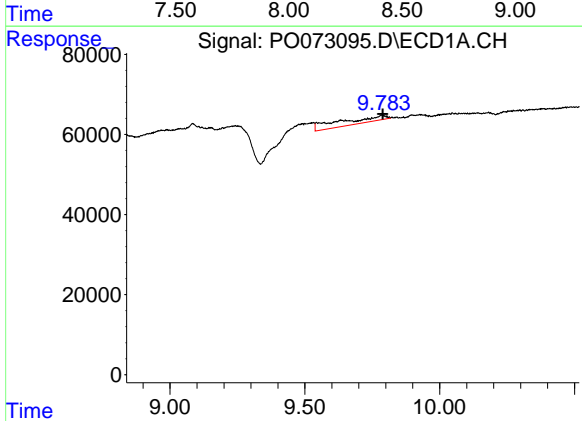
R.T.: 9.533 min
 Delta R.T.: -0.029 min
 Response: 128858
 Conc: 19.89 ng/ml

Instrument :
 ECD_O
 ClientSampleId :
 ICVPO110520



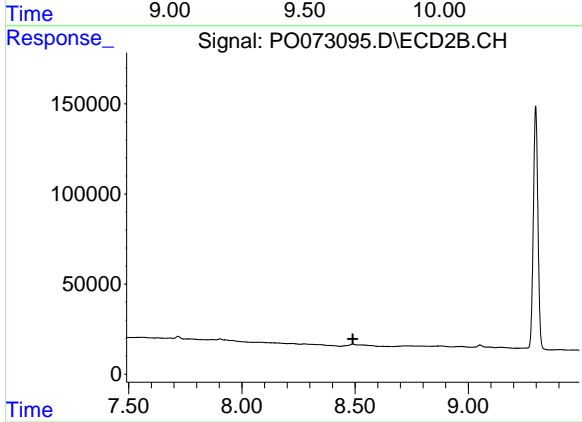
#42 AR-1268-2

R.T.: 0.000 min
 Exp R.T. : 8.282 min
 Response: 0
 Conc: N.D.



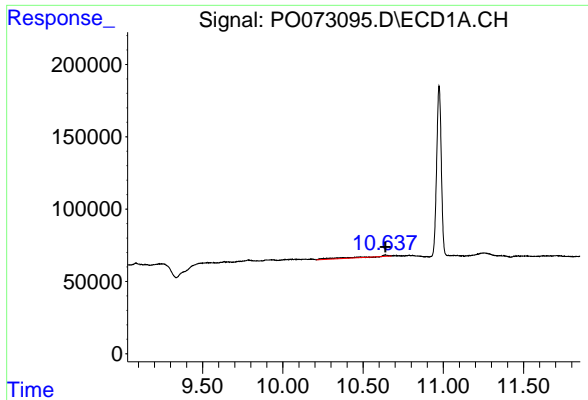
#43 AR-1268-3

R.T.: 9.784 min
 Delta R.T.: -0.004 min
 Response: 182166
 Conc: 32.61 ng/ml



#43 AR-1268-3

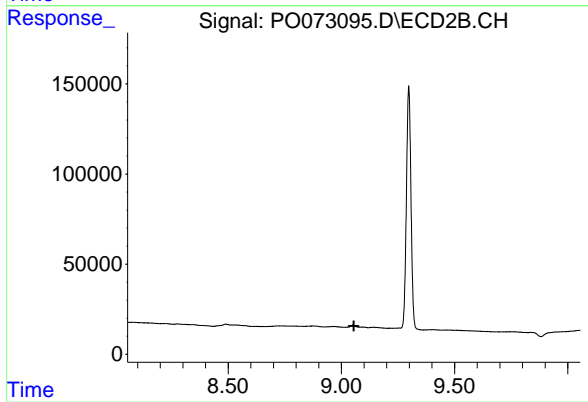
R.T.: 0.000 min
 Exp R.T. : 8.490 min
 Response: 0
 Conc: N.D.



#45 AR-1268-5

R.T.: 10.638 min
Delta R.T.: -0.002 min
Response: 94750
Conc: 5.86 ng/ml

Instrument :
ECD_O
ClientSampleId :
ICVPO110520



#45 AR-1268-5

R.T.: 0.000 min
Exp R.T. : 9.055 min
Response: 0
Conc: N.D.