

Data Path : Z:\pestpcbsrv\HPCHEM1\ECD\_0\Data\PO110420\  
 Data File : PO073097.D  
 Signal(s) : Signal #1: ECD1A.CH Signal #2: ECD2B.CH  
 Acq On : 04 Nov 2020 19:35  
 Operator : DD\AJ  
 Sample : AR1254ICV500  
 Misc :  
 ALS Vial : 35 Sample Multiplier: 1

Instrument :  
 ECD\_0  
 ClientSampleID :  
 ICVPO110520

Integration File signal 1: autoint1.e  
 Integration File signal 2: autoint2.e  
 Quant Time: Nov 05 05:49:34 2020  
 Quant Method : Z:\pestpcbsrv\HPCHEM1\ECD\_0\methods\PO110420.M  
 Quant Title : GC EXTRACTABLES  
 QLast Update : Thu Nov 05 05:38:46 2020  
 Response via : Initial Calibration  
 Integrator: ChemStation 6890 Scale Mode: Small noise peaks clipped

Volume Inj. : 2 µl  
 Signal #1 Phase : ZB-MR1 Signal #2 Phase: ZB-MR2  
 Signal #1 Info : 30Mx0.32mmx 0.50µ Signal #2 Info : 30M x 0.32mm x 0.25µm

Compound	RT#1	RT#2	Resp#1	Resp#2	ng/ml	ng/ml
System Monitoring Compounds						
1) SA Tetrachlo...	4.948	4.023	2834046	1807627	53.474	50.585
2) SA Decachlor...	10.972	9.298	2272116	1809786	54.905	54.247
Target Compounds						
3) L1 AR-1016-1	6.269	5.273	30216	7394	15.233	5.021 #
4) L1 AR-1016-2	6.296	5.273f	33096	7394	12.072	3.717 #
6) L1 AR-1016-4	0.000	5.536	0	462312	N.D.	548.928 #
7) L1 AR-1016-5	6.784	5.763	352267	280867	310.527	260.631
9) L2 AR-1221-2	5.300	4.373	39174	25502	76.998	71.214
12) L3 AR-1232-2	0.000	5.273f	0	7394	N.D.	8.371 #
13) L3 AR-1232-3	6.296	0.000	33096	0	26.308	N.D. #
14) L3 AR-1232-4	0.000	5.580	0	144032	N.D.	342.069 #
15) L3 AR-1232-5	6.566	5.763	625749	280867	1495.079	627.408 #
16) L4 AR-1242-1	6.269	5.273	30216	7394	17.380	5.913 #
17) L4 AR-1242-2	6.296	5.273f	33096	7394	13.818	4.438 #
19) L4 AR-1242-4	0.000	5.580	0	144032	N.D.	164.322 #
20) L4 AR-1242-5	7.255	6.141	342187	1110777	261.435	976.979 #
21) L5 AR-1248-1	6.269	5.273	30216	7394	22.443	7.887 #
22) L5 AR-1248-2	6.566	5.536	625749	462312	360.703	356.942
23) L5 AR-1248-3	6.784	5.580	352267	144032	187.891	106.602 #
24) L5 AR-1248-4	7.213	5.763	590165	280867	244.102	177.101 #
25) L5 AR-1248-5	7.255	6.183	342187	141956	149.068	89.152 #
26) L6 AR-1254-1	7.182	6.141	1071031	1110777	457.756	462.318
27) L6 AR-1254-2	7.413	6.300	1659817	984605	471.061	460.045
28) L6 AR-1254-3	7.795	6.717	1682847	1579206	467.938	469.418
29) L6 AR-1254-4	8.092	6.955	1398488	1036592	464.720	466.752
30) L6 AR-1254-5	8.521	7.382	1368338	1459883	472.696	480.926
31) L7 AR-1260-1	7.962	6.855	698097	770040	320.488	383.285
32) L7 AR-1260-2	8.228	7.049	824032	671528	304.166	270.589
33) L7 AR-1260-3	8.584	7.201	176135	661042	85.569	292.870 #
34) L7 AR-1260-4	8.817	7.685	559978	78296	245.315	42.315 #
35) L7 AR-1260-5	9.152	7.930	202601	125729	45.932	29.361 #
36) L8 AR-1262-1	8.584	7.382	176135	1459883	51.686	937.444 #
37) L8 AR-1262-2	9.152	7.930	202601	125729	34.900	24.851 #
38) L8 AR-1262-3	9.486f	0.000	214160	0	51.488	N.D. #
39) L8 AR-1262-4	9.535f	8.275	58685	164620	18.249	44.834 #
41) L9 AR-1268-1	9.486f	0.000	214160	0	30.220	N.D. #
42) L9 AR-1268-2	9.535f	8.275	58685	164620	9.058	32.489 #
43) L9 AR-1268-3	9.783	0.000	13113	0	2.348	N.D. #
45) L9 AR-1268-5	10.635	0.000	17785	0	1.100	N.D. #

(f)=RT Delta > 1/2 Window (#)=Amounts differ by > 25% (m)=manual int.

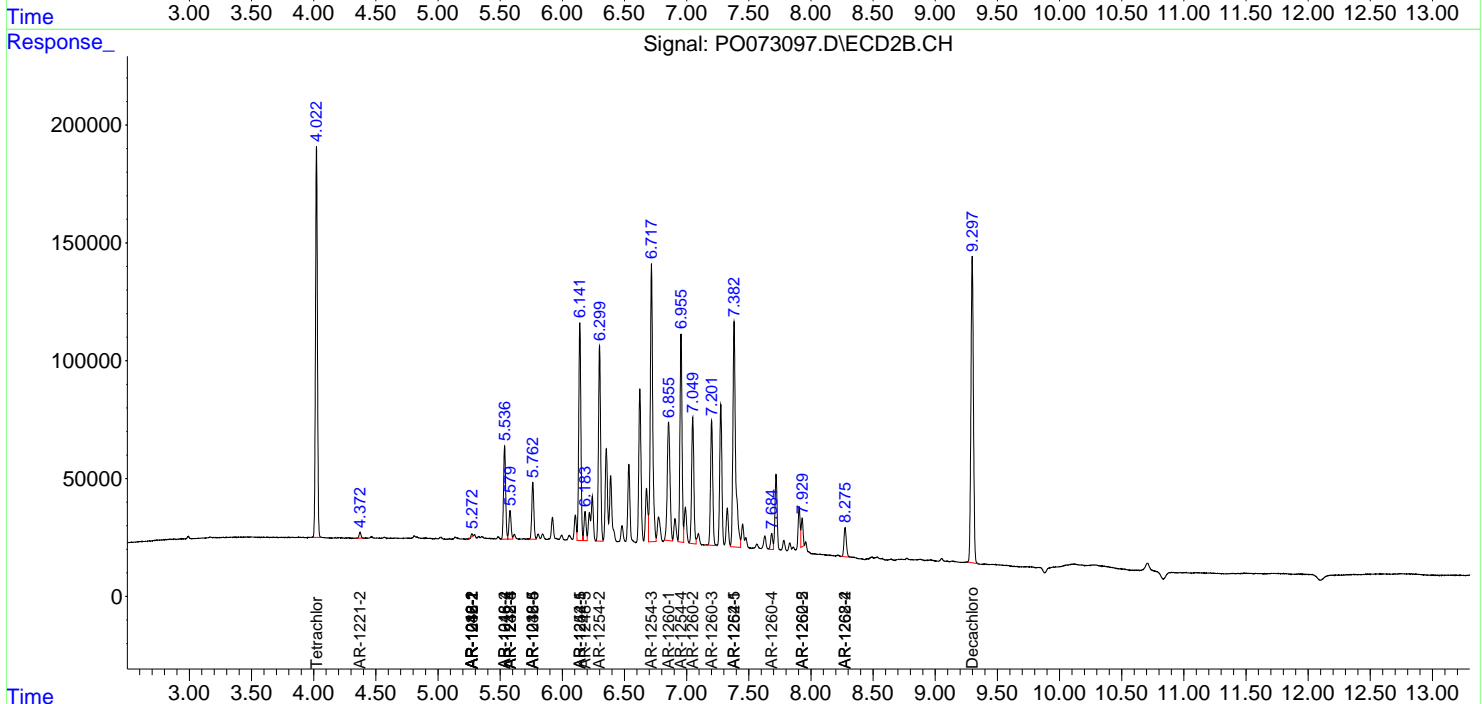
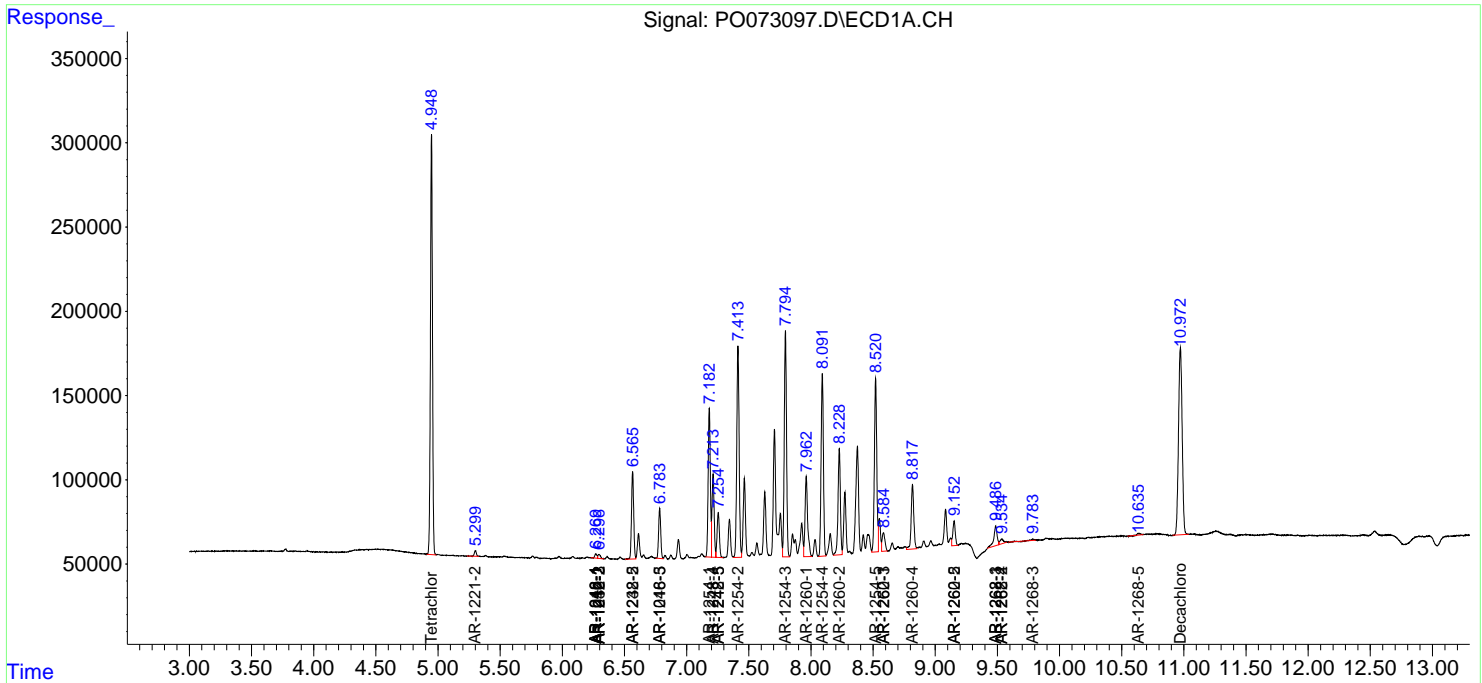
**Instrument :**  
ECD\_O  
**ClientSampleId :**  
ICVPO110520

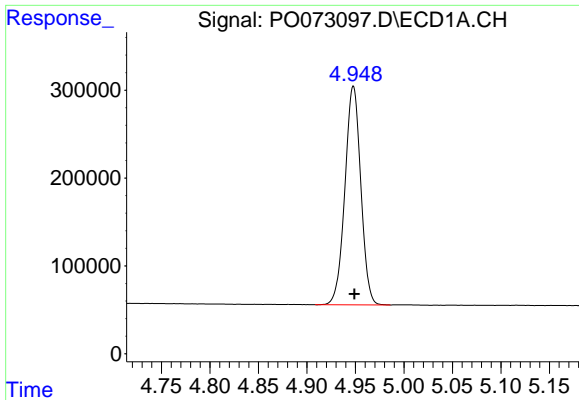
Data Path : Z:\pestpcbsrv\HPCHEM1\ECD\_O\Data\PO110420\  
 Data File : PO073097.D  
 Signal(s) : Signal #1: ECD1A.CH Signal #2: ECD2B.CH  
 Acq On : 04 Nov 2020 19:35  
 Operator : DD\AJ  
 Sample : AR1254ICV500  
 Misc :  
 ALS Vial : 35 Sample Multiplier: 1

Instrument :  
 ECD\_O  
 Client Sampled :  
 ICVPO110520

Integration File signal 1: autoint1.e  
 Integration File signal 2: autoint2.e  
 Quant Time: Nov 05 05:49:34 2020  
 Quant Method : Z:\pestpcbsrv\HPCHEM1\ECD\_O\methods\PO110420.M  
 Quant Title : GC EXTRACTABLES  
 QLast Update : Thu Nov 05 05:38:46 2020  
 Response via : Initial Calibration  
 Integrator: ChemStation 6890 Scale Mode: Small noise peaks clipped

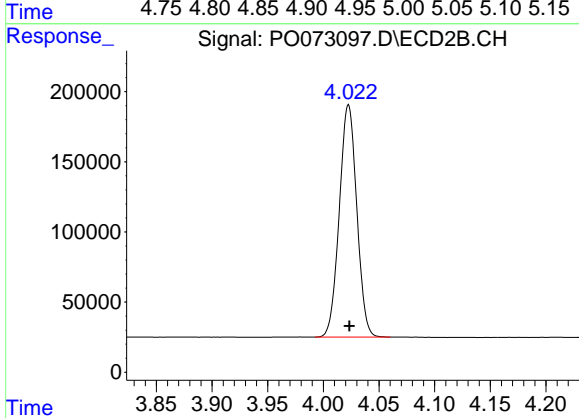
Volume Inj. : 2 µl  
 Signal #1 Phase : ZB-MR1 Signal #2 Phase: ZB-MR2  
 Signal #1 Info : 30Mx0.32mmx 0.50µ Signal #2 Info : 30M x 0.32mm x 0.25µm



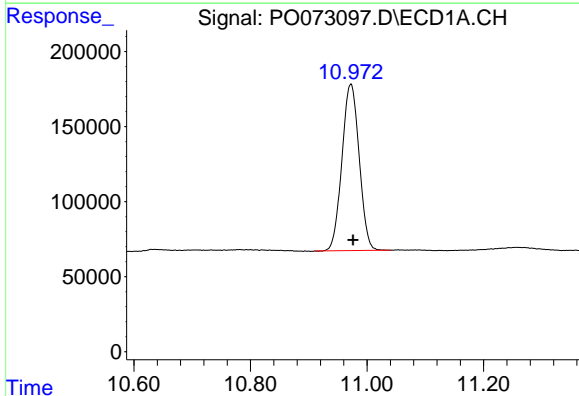


#1 Tetrachloro-m-xylene  
 R.T.: 4.948 min  
 Delta R.T.: -0.001 min  
 Response: 2834046  
 Conc: 53.47 ng/ml

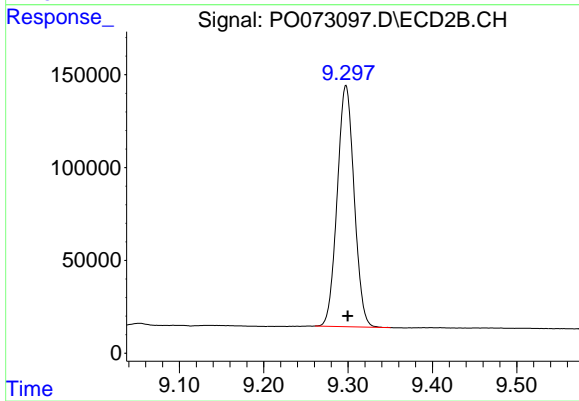
Instrument :  
 ECD\_O  
 ClientSampleId :  
 ICVPO110520



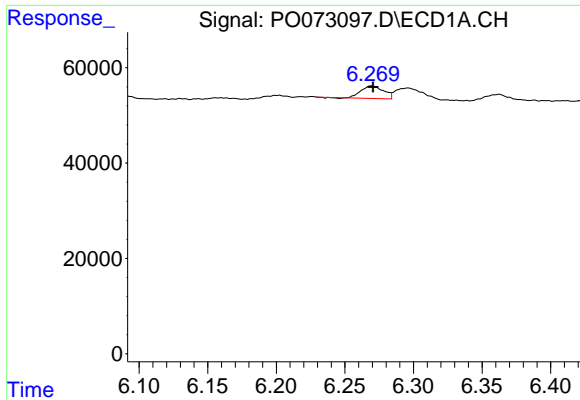
#1 Tetrachloro-m-xylene  
 R.T.: 4.023 min  
 Delta R.T.: 0.000 min  
 Response: 1807627  
 Conc: 50.59 ng/ml



#2 Decachlorobiphenyl  
 R.T.: 10.972 min  
 Delta R.T.: -0.004 min  
 Response: 2272116  
 Conc: 54.90 ng/ml

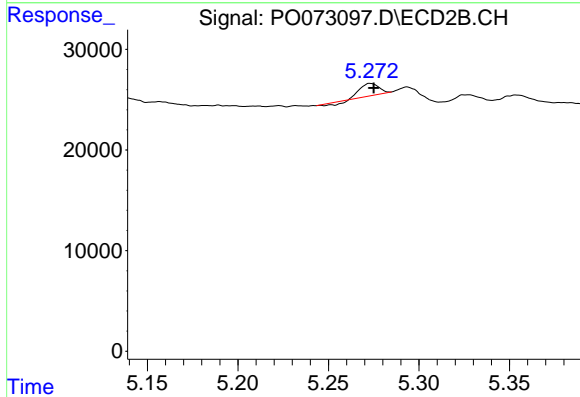


#2 Decachlorobiphenyl  
 R.T.: 9.298 min  
 Delta R.T.: -0.002 min  
 Response: 1809786  
 Conc: 54.25 ng/ml

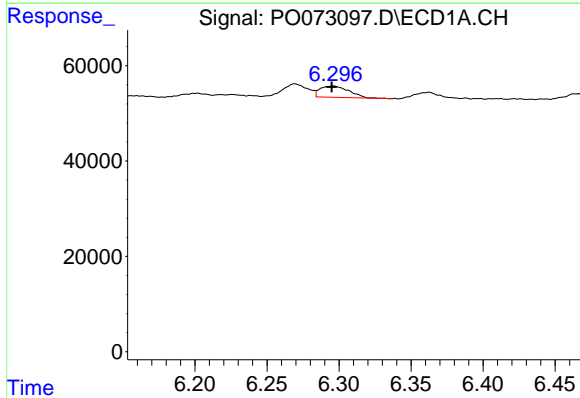


#3 AR-1016-1  
 R.T.: 6.269 min  
 Delta R.T.: -0.001 min  
 Response: 30216  
 Conc: 15.23 ng/ml

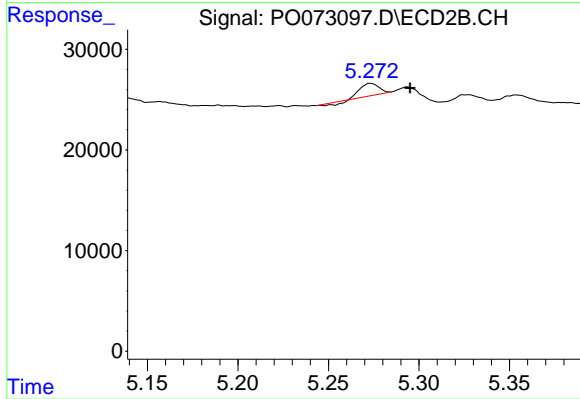
Instrument :  
 ECD\_O  
 ClientSampleId :  
 ICVPO110520



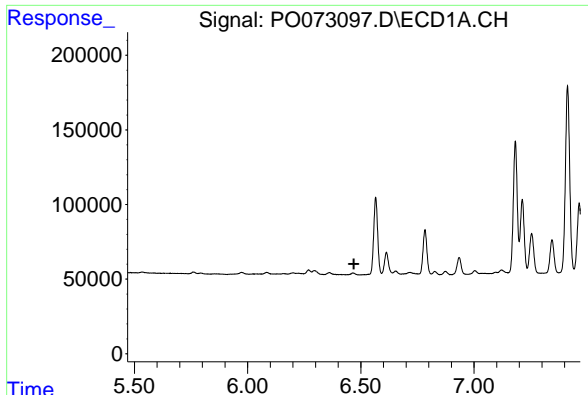
#3 AR-1016-1  
 R.T.: 5.273 min  
 Delta R.T.: -0.002 min  
 Response: 7394  
 Conc: 5.02 ng/ml



#4 AR-1016-2  
 R.T.: 6.296 min  
 Delta R.T.: 0.000 min  
 Response: 33096  
 Conc: 12.07 ng/ml



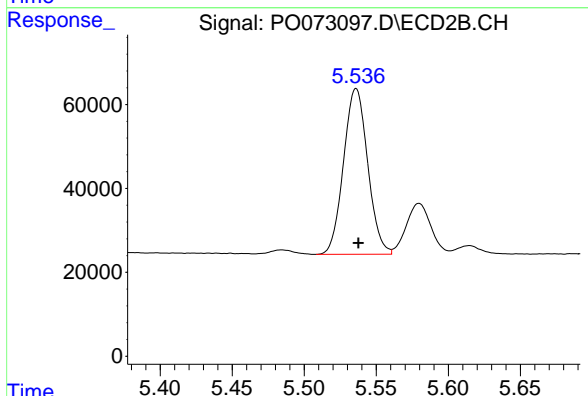
#4 AR-1016-2  
 R.T.: 5.273 min  
 Delta R.T.: -0.022 min  
 Response: 7394  
 Conc: 3.72 ng/ml



#6 AR-1016-4

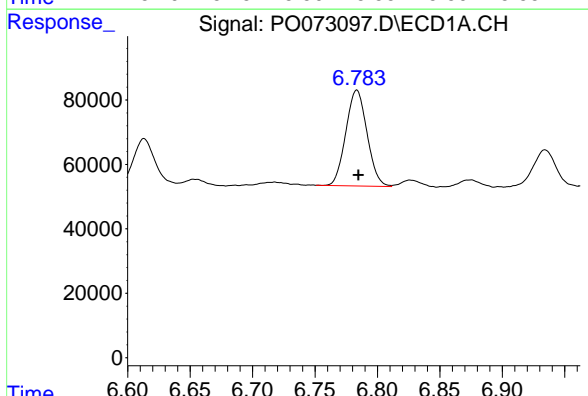
R.T.: 0.000 min  
 Exp R.T.: 6.469 min  
 Response: 0  
 Conc: N.D.

Instrument :  
 ECD\_O  
 ClientSampleId :  
 ICVPO110520



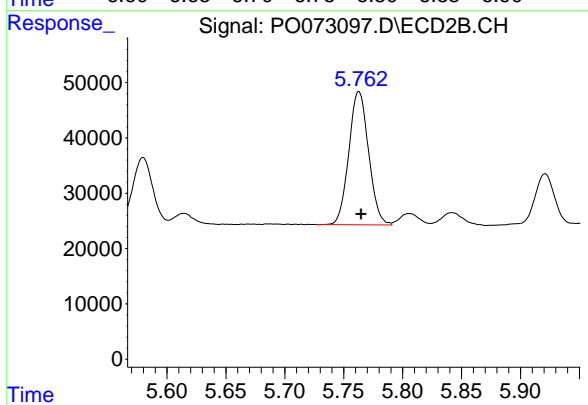
#6 AR-1016-4

R.T.: 5.536 min  
 Delta R.T.: -0.002 min  
 Response: 462312  
 Conc: 548.93 ng/ml



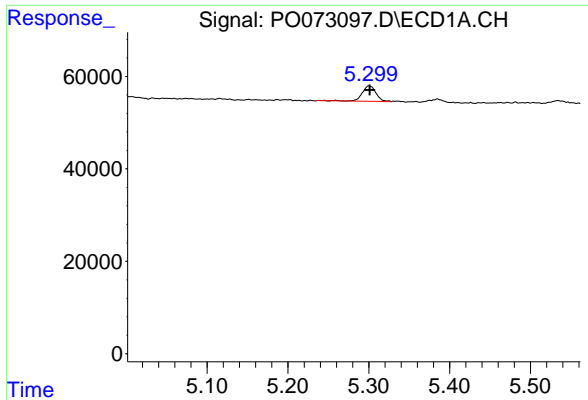
#7 AR-1016-5

R.T.: 6.784 min  
 Delta R.T.: -0.001 min  
 Response: 352267  
 Conc: 310.53 ng/ml



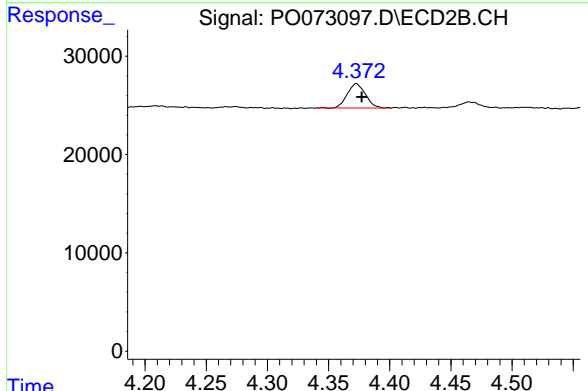
#7 AR-1016-5

R.T.: 5.763 min  
 Delta R.T.: -0.002 min  
 Response: 280867  
 Conc: 260.63 ng/ml

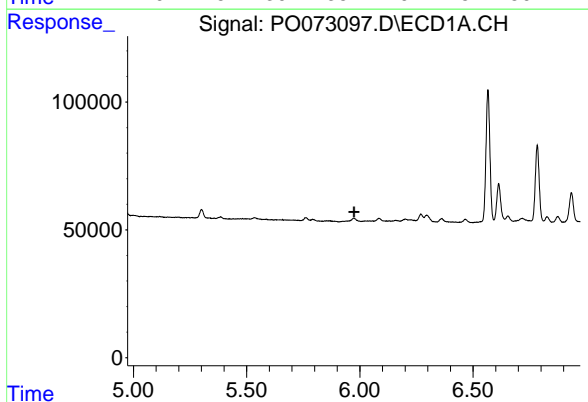


#9 AR-1221-2  
 R.T.: 5.300 min  
 Delta R.T.: 0.000 min  
 Response: 39174  
 Conc: 77.00 ng/ml

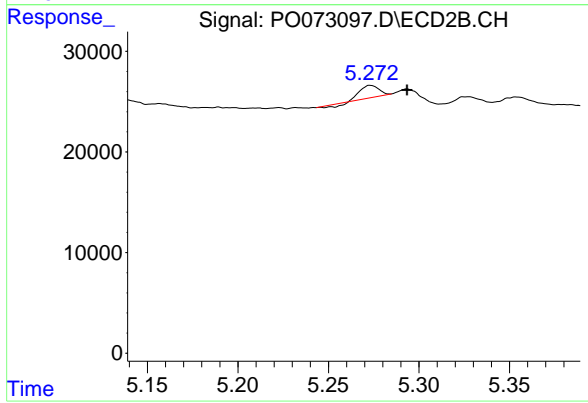
Instrument :  
 ECD\_O  
 ClientSampled :  
 ICVPO110520



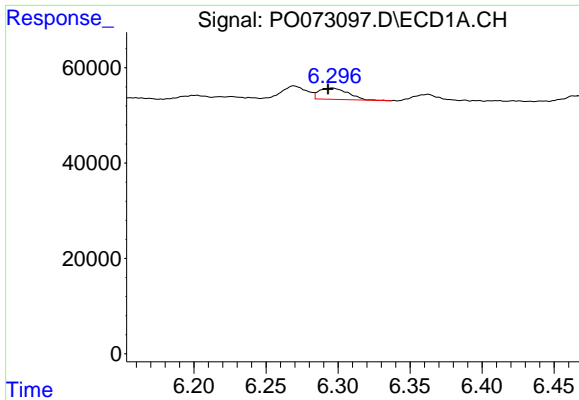
#9 AR-1221-2  
 R.T.: 4.373 min  
 Delta R.T.: -0.004 min  
 Response: 25502  
 Conc: 71.21 ng/ml



#12 AR-1232-2  
 R.T.: 0.000 min  
 Exp R.T. : 5.974 min  
 Response: 0  
 Conc: N.D.

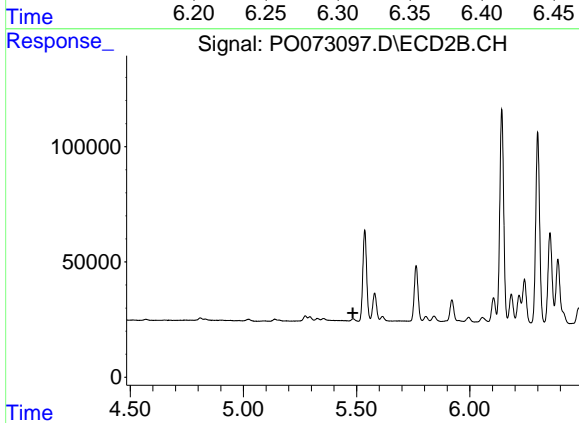


#12 AR-1232-2  
 R.T.: 5.273 min  
 Delta R.T.: -0.020 min  
 Response: 7394  
 Conc: 8.37 ng/ml

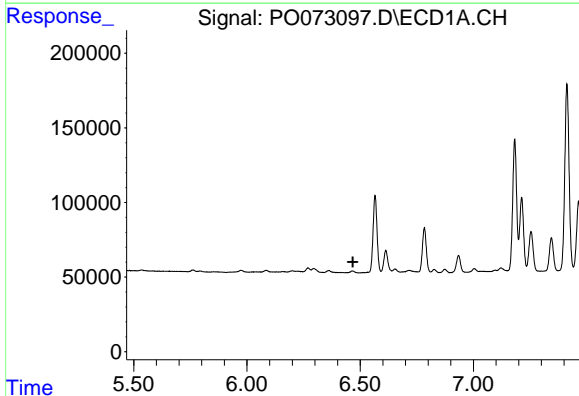


#13 AR-1232-3  
 R.T.: 6.296 min  
 Delta R.T.: 0.003 min  
 Response: 33096  
 Conc: 26.31 ng/ml

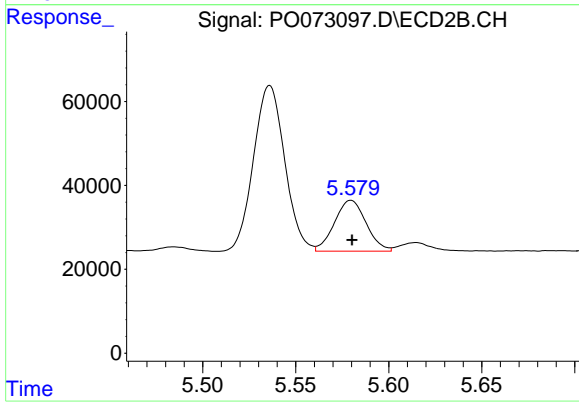
**Instrument :**  
 ECD\_O  
**ClientSampleId :**  
 ICVPO110520



#13 AR-1232-3  
 R.T.: 0.000 min  
 Exp R.T. : 5.483 min  
 Response: 0  
 Conc: N.D.

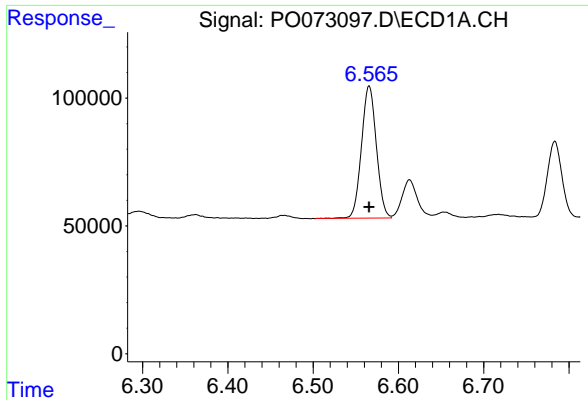


#14 AR-1232-4  
 R.T.: 0.000 min  
 Exp R.T. : 6.467 min  
 Response: 0  
 Conc: N.D.



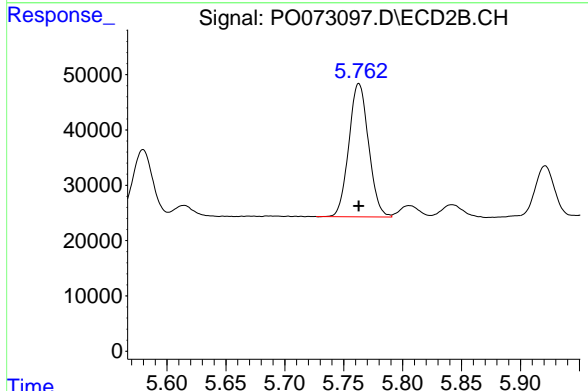
#14 AR-1232-4  
 R.T.: 5.580 min  
 Delta R.T.: 0.000 min  
 Response: 144032  
 Conc: 342.07 ng/ml



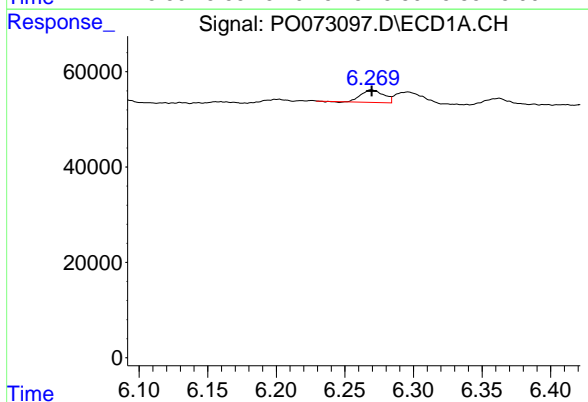


#15 AR-1232-5  
 R.T.: 6.566 min  
 Delta R.T.: 0.000 min  
 Response: 625749  
 Conc: 1495.08 ng/ml

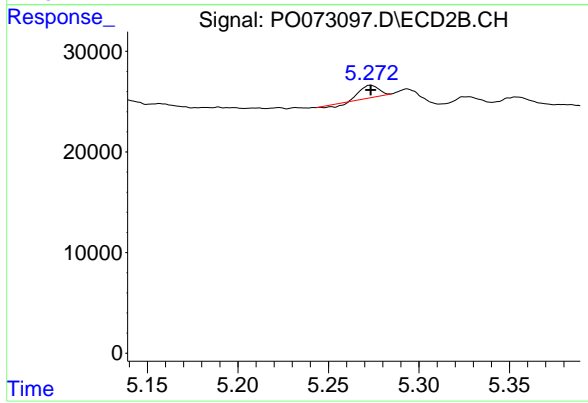
**Instrument :**  
 ECD\_O  
**ClientSampled :**  
 ICVPO110520



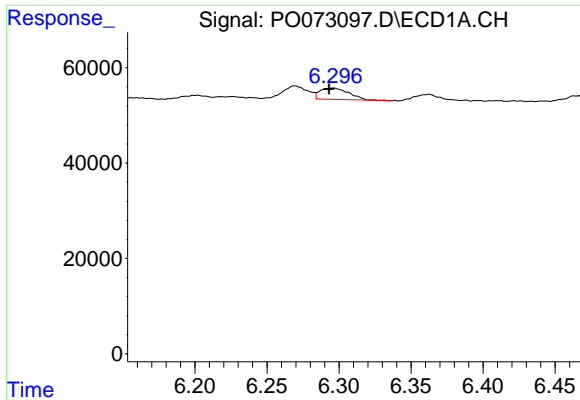
#15 AR-1232-5  
 R.T.: 5.763 min  
 Delta R.T.: 0.000 min  
 Response: 280867  
 Conc: 627.41 ng/ml



#16 AR-1242-1  
 R.T.: 6.269 min  
 Delta R.T.: 0.000 min  
 Response: 30216  
 Conc: 17.38 ng/ml

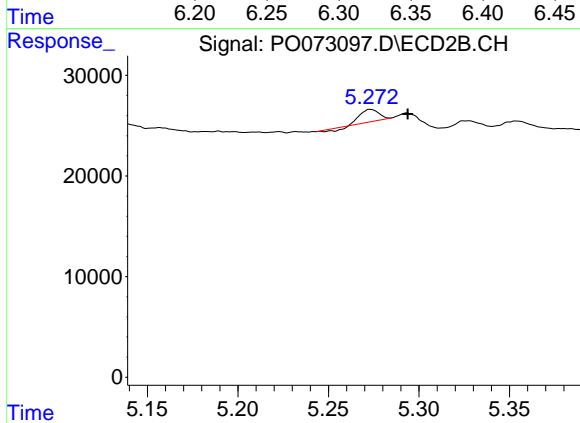


#16 AR-1242-1  
 R.T.: 5.273 min  
 Delta R.T.: 0.000 min  
 Response: 7394  
 Conc: 5.91 ng/ml

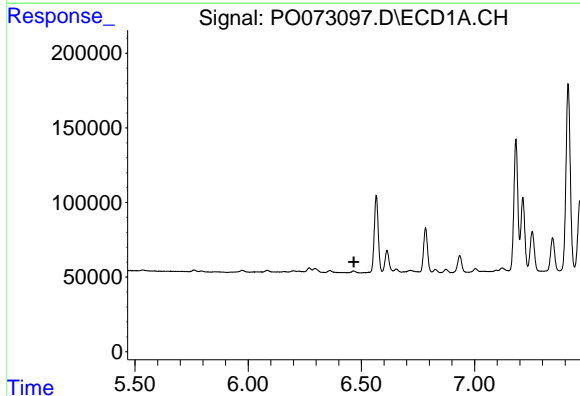


#17 AR-1242-2  
 R.T.: 6.296 min  
 Delta R.T.: 0.003 min  
 Response: 33096  
 Conc: 13.82 ng/ml

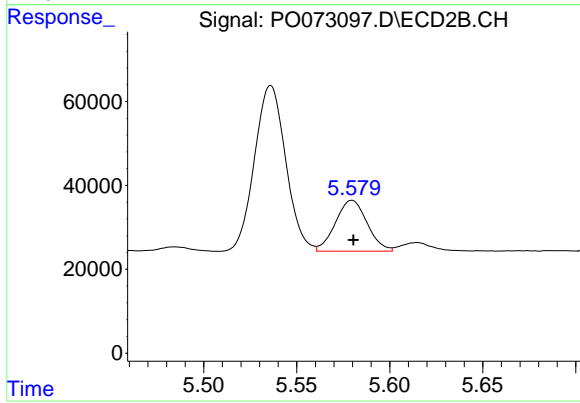
**Instrument :**  
 ECD\_O  
**ClientSampleId :**  
 ICVPO110520



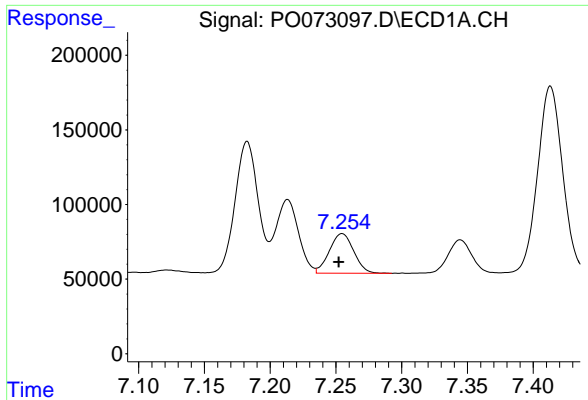
#17 AR-1242-2  
 R.T.: 5.273 min  
 Delta R.T.: -0.020 min  
 Response: 7394  
 Conc: 4.44 ng/ml



#19 AR-1242-4  
 R.T.: 0.000 min  
 Exp R.T. : 6.467 min  
 Response: 0  
 Conc: N.D.

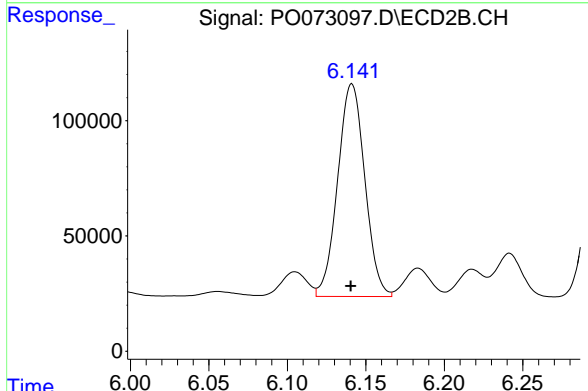


#19 AR-1242-4  
 R.T.: 5.580 min  
 Delta R.T.: 0.000 min  
 Response: 144032  
 Conc: 164.32 ng/ml

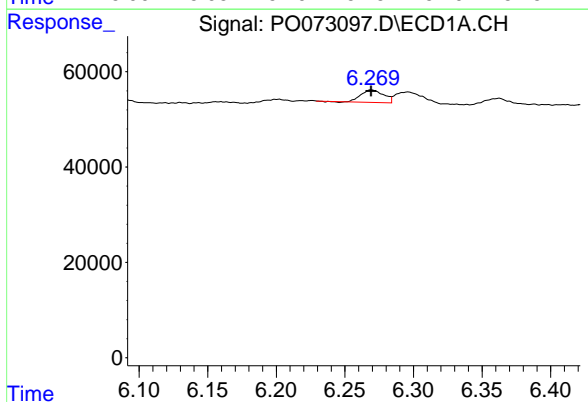


#20 AR-1242-5  
 R.T.: 7.255 min  
 Delta R.T.: 0.003 min  
 Response: 342187  
 Conc: 261.44 ng/ml

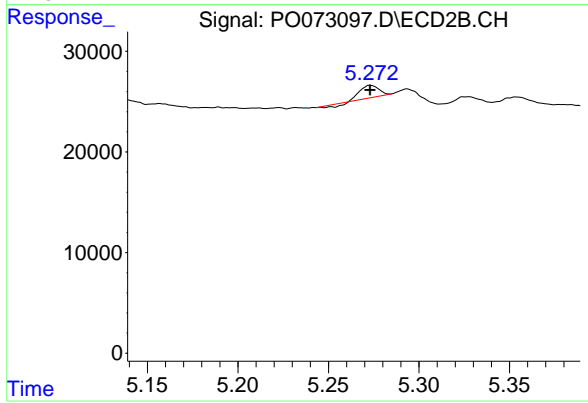
Instrument :  
 ECD\_O  
 ClientSampleId :  
 ICVPO110520



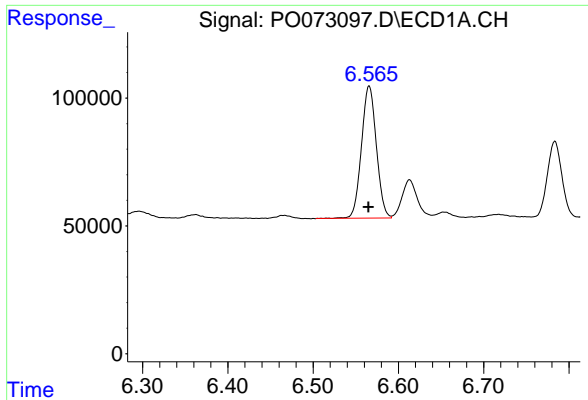
#20 AR-1242-5  
 R.T.: 6.141 min  
 Delta R.T.: 0.000 min  
 Response: 1110777  
 Conc: 976.98 ng/ml



#21 AR-1248-1  
 R.T.: 6.269 min  
 Delta R.T.: 0.000 min  
 Response: 30216  
 Conc: 22.44 ng/ml



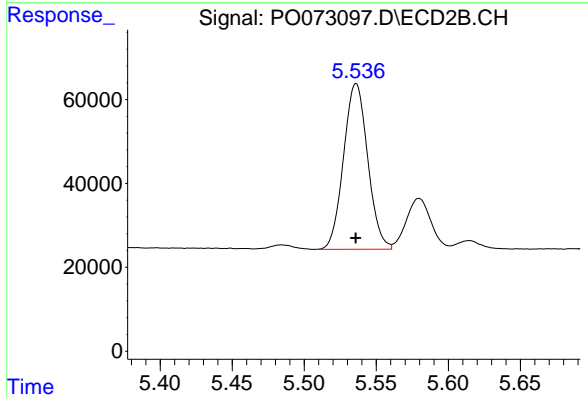
#21 AR-1248-1  
 R.T.: 5.273 min  
 Delta R.T.: 0.000 min  
 Response: 7394  
 Conc: 7.89 ng/ml



#22 AR-1248-2

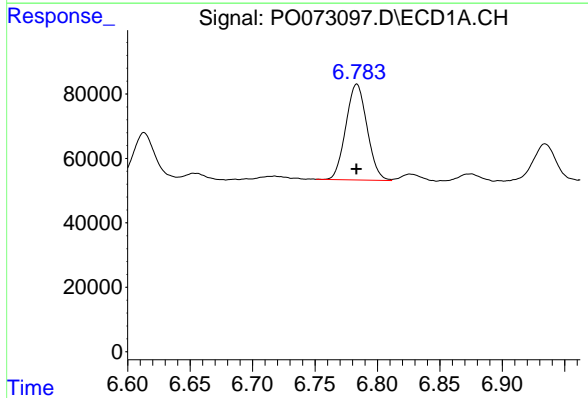
R.T.: 6.566 min  
 Delta R.T.: 0.000 min  
 Response: 625749  
 Conc: 360.70 ng/ml

Instrument :  
 ECD\_O  
 ClientSampleId :  
 ICVPO110520



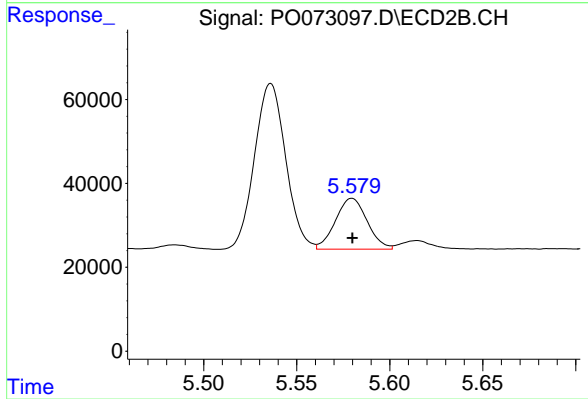
#22 AR-1248-2

R.T.: 5.536 min  
 Delta R.T.: 0.000 min  
 Response: 462312  
 Conc: 356.94 ng/ml



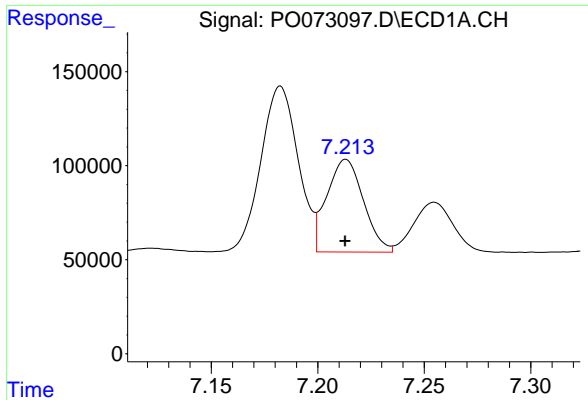
#23 AR-1248-3

R.T.: 6.784 min  
 Delta R.T.: 0.000 min  
 Response: 352267  
 Conc: 187.89 ng/ml



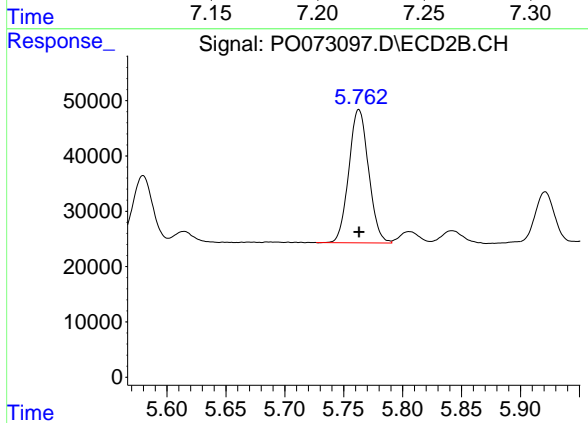
#23 AR-1248-3

R.T.: 5.580 min  
 Delta R.T.: 0.000 min  
 Response: 144032  
 Conc: 106.60 ng/ml

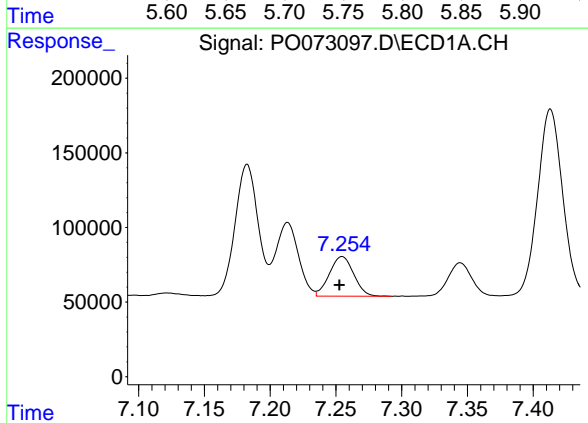


#24 AR-1248-4  
 R.T.: 7.213 min  
 Delta R.T.: 0.000 min  
 Response: 590165  
 Conc: 244.10 ng/ml

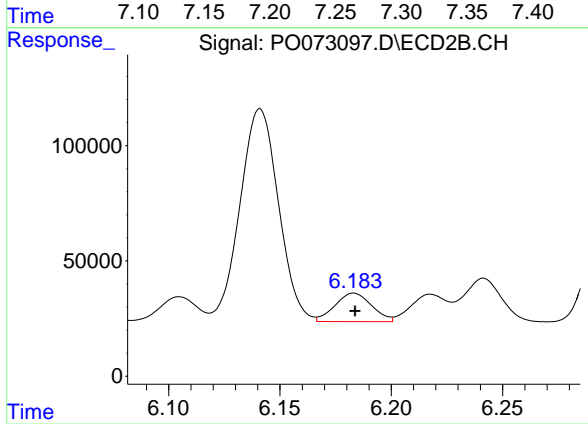
Instrument :  
 ECD\_O  
 ClientSampleId :  
 ICVPO110520



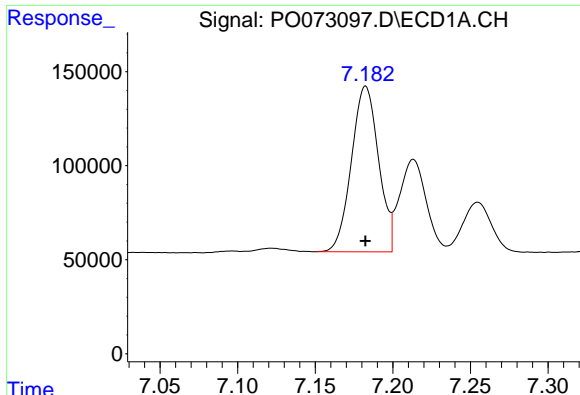
#24 AR-1248-4  
 R.T.: 5.763 min  
 Delta R.T.: 0.000 min  
 Response: 280867  
 Conc: 177.10 ng/ml



#25 AR-1248-5  
 R.T.: 7.255 min  
 Delta R.T.: 0.002 min  
 Response: 342187  
 Conc: 149.07 ng/ml



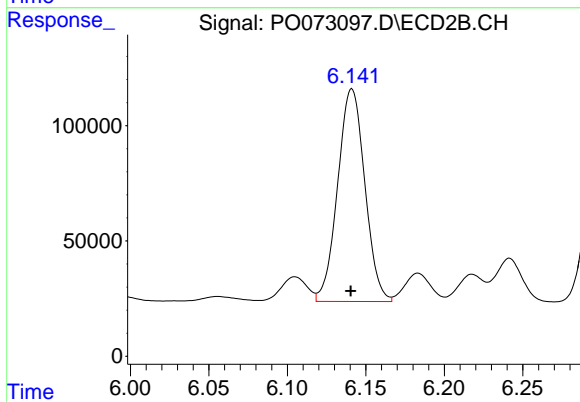
#25 AR-1248-5  
 R.T.: 6.183 min  
 Delta R.T.: 0.000 min  
 Response: 141956  
 Conc: 89.15 ng/ml



#26 AR-1254-1

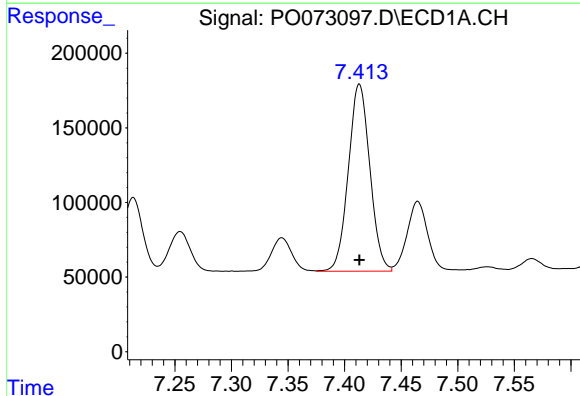
R.T.: 7.182 min  
 Delta R.T.: 0.000 min  
 Response: 1071031  
 Conc: 457.76 ng/ml

Instrument :  
 ECD\_O  
 ClientSampled :  
 ICVPO110520



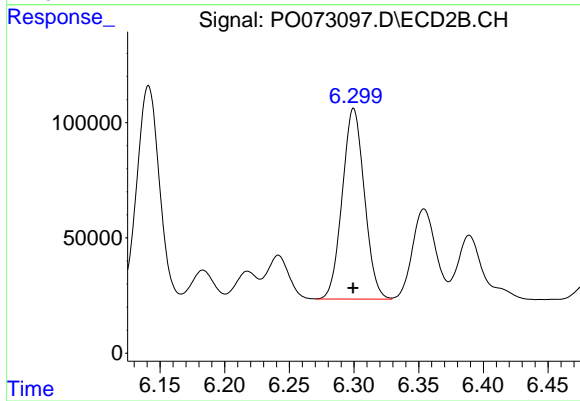
#26 AR-1254-1

R.T.: 6.141 min  
 Delta R.T.: 0.000 min  
 Response: 1110777  
 Conc: 462.32 ng/ml



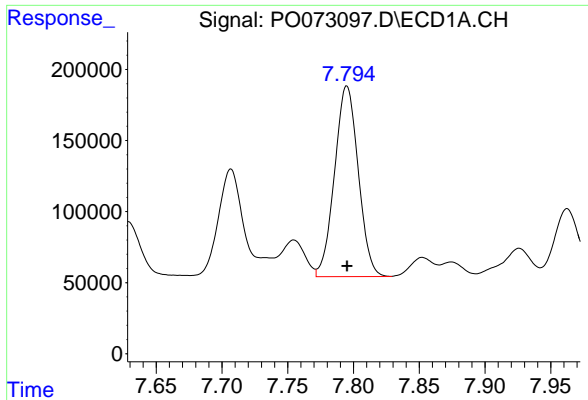
#27 AR-1254-2

R.T.: 7.413 min  
 Delta R.T.: 0.000 min  
 Response: 1659817  
 Conc: 471.06 ng/ml



#27 AR-1254-2

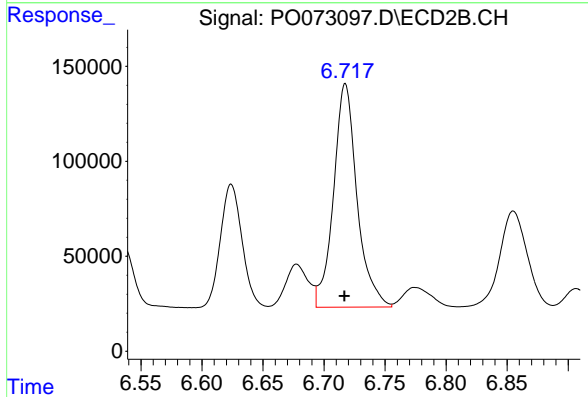
R.T.: 6.300 min  
 Delta R.T.: 0.000 min  
 Response: 984605  
 Conc: 460.05 ng/ml



#28 AR-1254-3

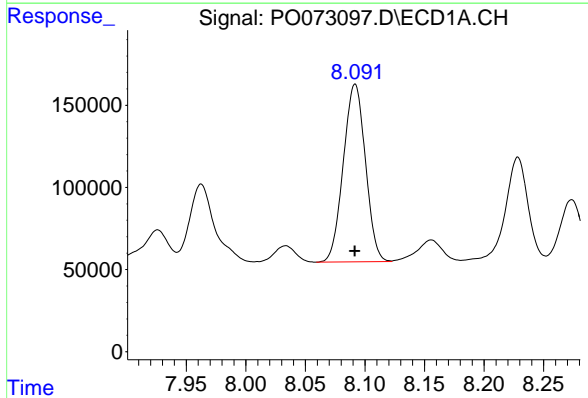
R.T.: 7.795 min  
 Delta R.T.: 0.000 min  
 Response: 1682847  
 Conc: 467.94 ng/ml

Instrument :  
 ECD\_O  
 ClientSampleId :  
 ICVPO110520



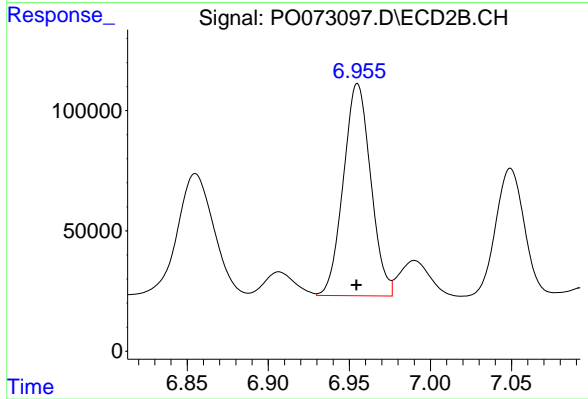
#28 AR-1254-3

R.T.: 6.717 min  
 Delta R.T.: 0.000 min  
 Response: 1579206  
 Conc: 469.42 ng/ml



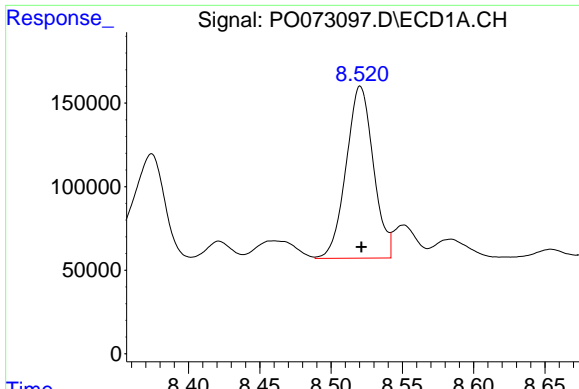
#29 AR-1254-4

R.T.: 8.092 min  
 Delta R.T.: 0.000 min  
 Response: 1398488  
 Conc: 464.72 ng/ml



#29 AR-1254-4

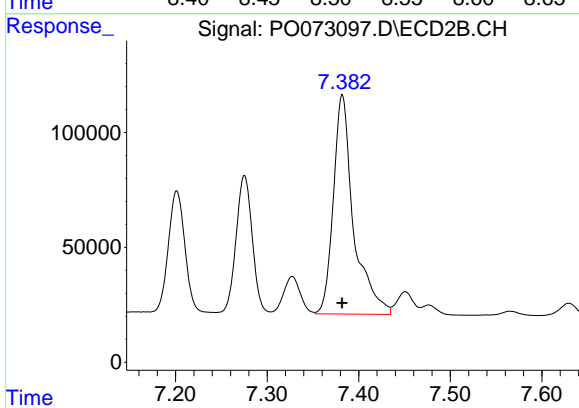
R.T.: 6.955 min  
 Delta R.T.: 0.000 min  
 Response: 1036592  
 Conc: 466.75 ng/ml



#30 AR-1254-5

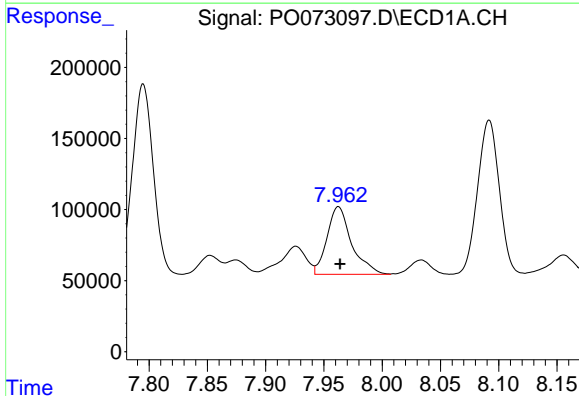
R.T.: 8.521 min  
 Delta R.T.: 0.000 min  
 Response: 1368338  
 Conc: 472.70 ng/ml

Instrument :  
 ECD\_O  
 ClientSampleId :  
 ICVPO110520



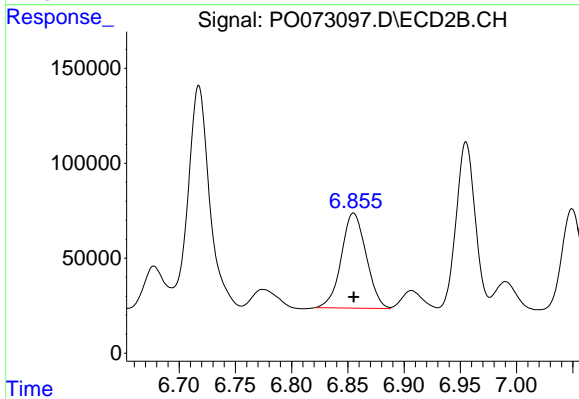
#30 AR-1254-5

R.T.: 7.382 min  
 Delta R.T.: 0.000 min  
 Response: 1459883  
 Conc: 480.93 ng/ml



#31 AR-1260-1

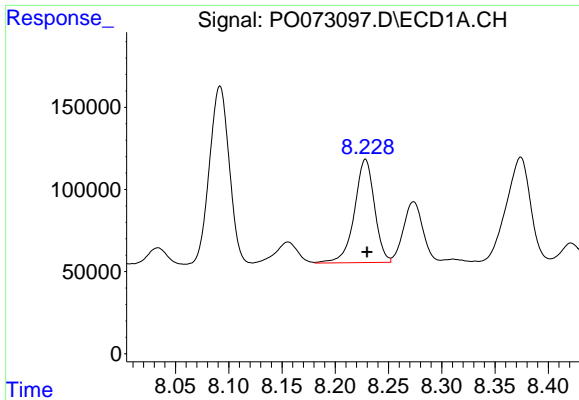
R.T.: 7.962 min  
 Delta R.T.: -0.001 min  
 Response: 698097  
 Conc: 320.49 ng/ml



#31 AR-1260-1

R.T.: 6.855 min  
 Delta R.T.: 0.000 min  
 Response: 770040  
 Conc: 383.28 ng/ml

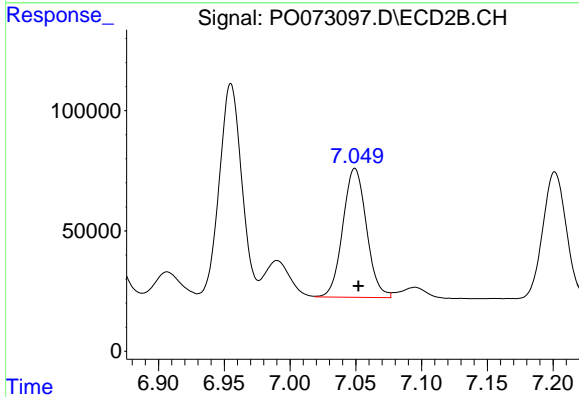




#32 AR-1260-2

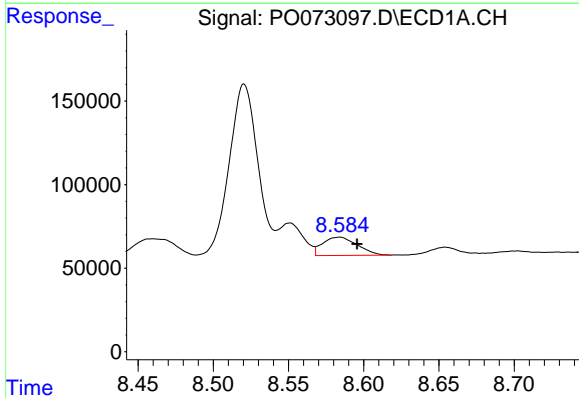
R.T.: 8.228 min  
 Delta R.T.: -0.001 min  
 Response: 824032  
 Conc: 304.17 ng/ml

Instrument :  
 ECD\_O  
 ClientSampleId :  
 ICVPO110520



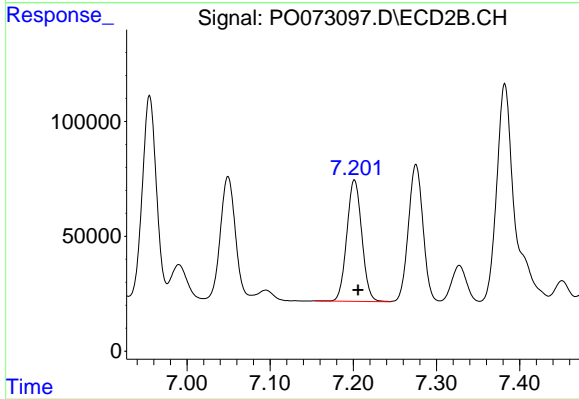
#32 AR-1260-2

R.T.: 7.049 min  
 Delta R.T.: -0.003 min  
 Response: 671528  
 Conc: 270.59 ng/ml



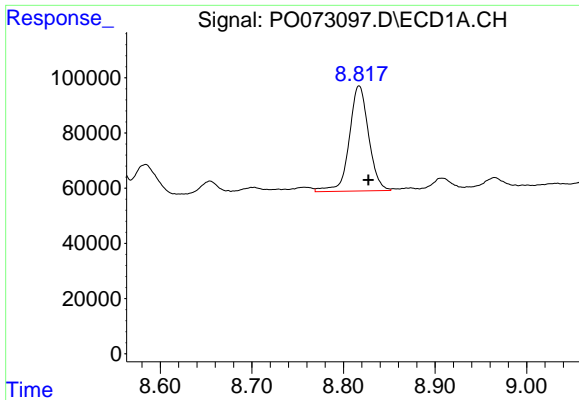
#33 AR-1260-3

R.T.: 8.584 min  
 Delta R.T.: -0.012 min  
 Response: 176135  
 Conc: 85.57 ng/ml



#33 AR-1260-3

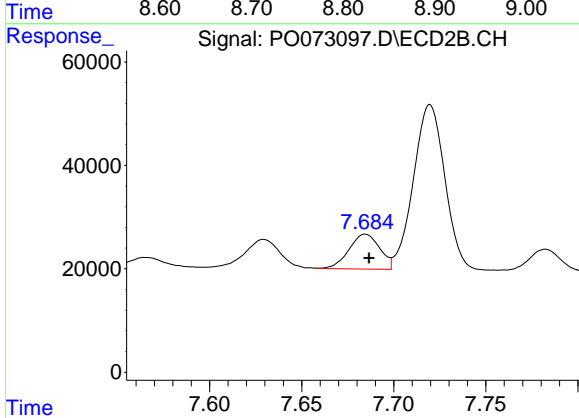
R.T.: 7.201 min  
 Delta R.T.: -0.004 min  
 Response: 661042  
 Conc: 292.87 ng/ml



#34 AR-1260-4

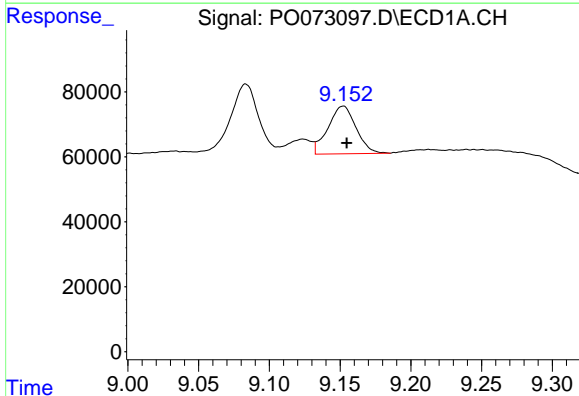
R.T.: 8.817 min  
 Delta R.T.: -0.010 min  
 Response: 559978  
 Conc: 245.31 ng/ml

**Instrument :**  
 ECD\_O  
**ClientSampled :**  
 ICVPO110520



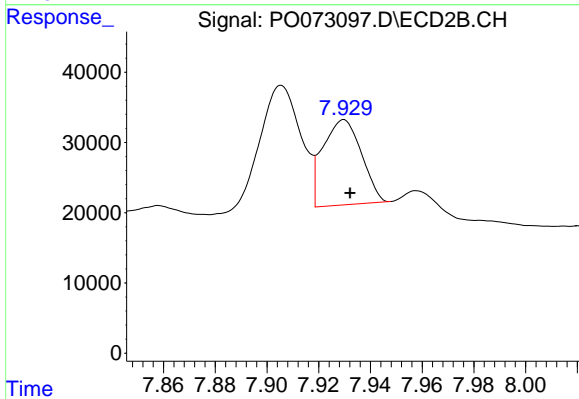
#34 AR-1260-4

R.T.: 7.685 min  
 Delta R.T.: -0.002 min  
 Response: 78296  
 Conc: 42.31 ng/ml



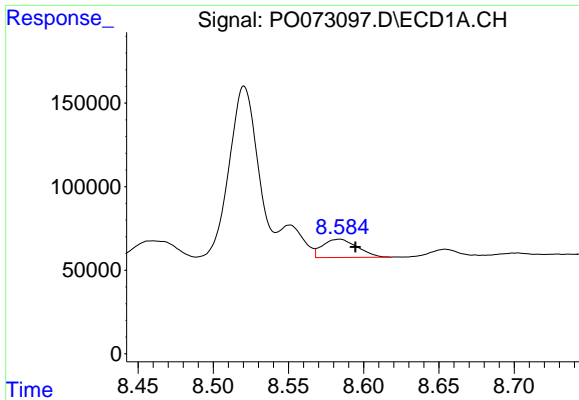
#35 AR-1260-5

R.T.: 9.152 min  
 Delta R.T.: -0.002 min  
 Response: 202601  
 Conc: 45.93 ng/ml



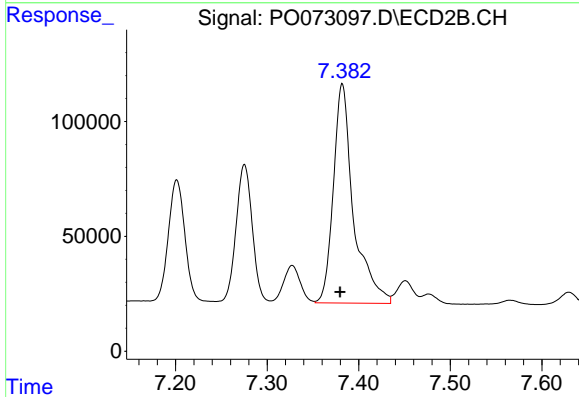
#35 AR-1260-5

R.T.: 7.930 min  
 Delta R.T.: -0.002 min  
 Response: 125729  
 Conc: 29.36 ng/ml

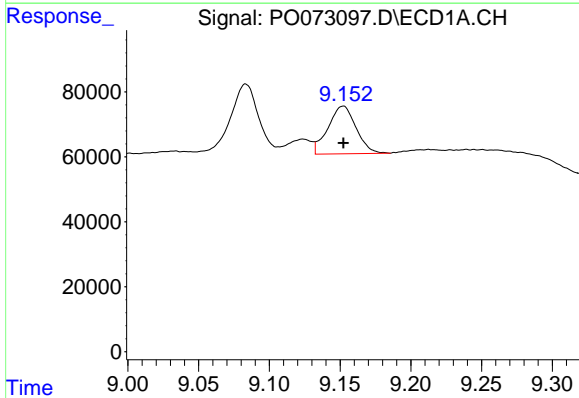


#36 AR-1262-1  
 R.T.: 8.584 min  
 Delta R.T.: -0.010 min  
 Response: 176135  
 Conc: 51.69 ng/ml

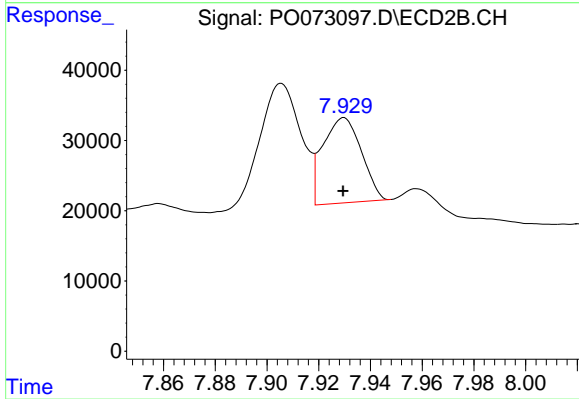
Instrument :  
 ECD\_O  
 ClientSampleId :  
 ICVPO110520



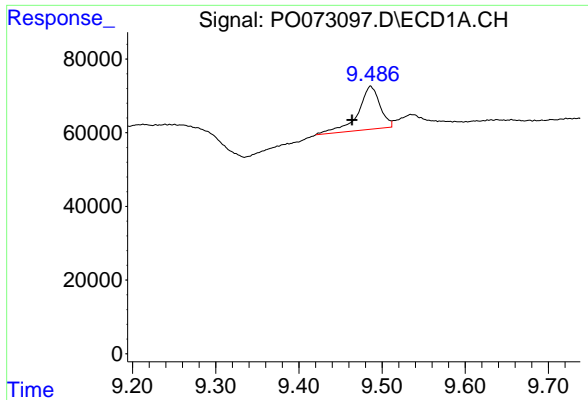
#36 AR-1262-1  
 R.T.: 7.382 min  
 Delta R.T.: 0.002 min  
 Response: 1459883  
 Conc: 937.44 ng/ml



#37 AR-1262-2  
 R.T.: 9.152 min  
 Delta R.T.: 0.000 min  
 Response: 202601  
 Conc: 34.90 ng/ml

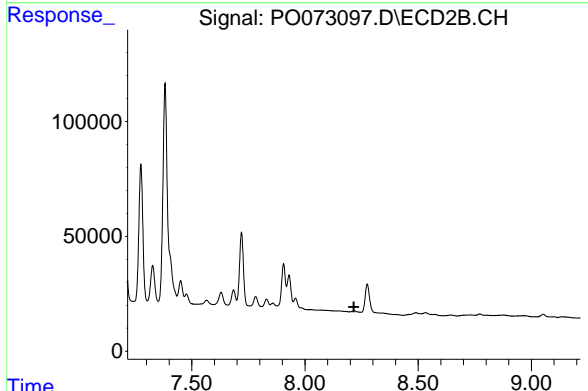


#37 AR-1262-2  
 R.T.: 7.930 min  
 Delta R.T.: 0.000 min  
 Response: 125729  
 Conc: 24.85 ng/ml

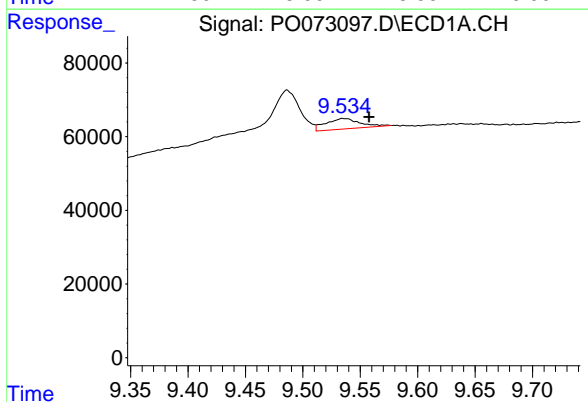


#38 AR-1262-3  
 R.T.: 9.486 min  
 Delta R.T.: 0.022 min  
 Response: 214160  
 Conc: 51.49 ng/ml

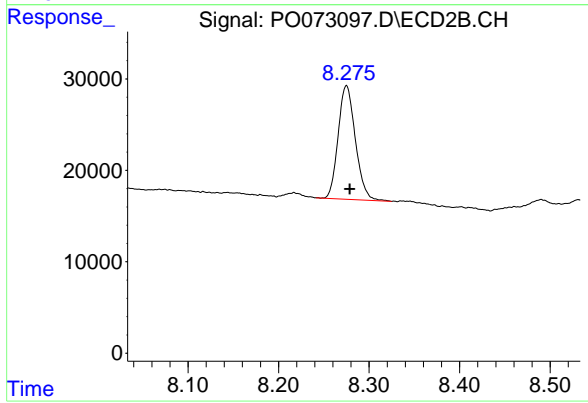
Instrument :  
 ECD\_O  
 ClientSampleId :  
 ICVPO110520



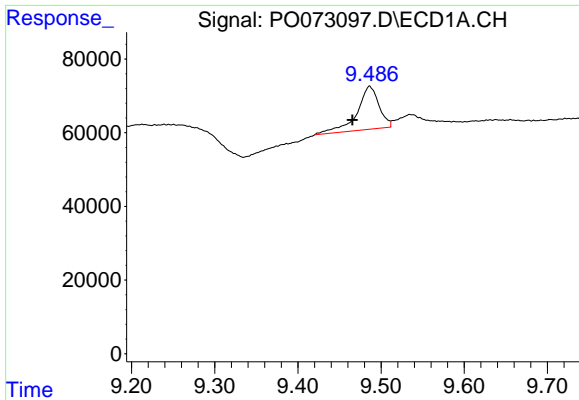
#38 AR-1262-3  
 R.T.: 0.000 min  
 Exp R.T. : 8.216 min  
 Response: 0  
 Conc: N.D.



#39 AR-1262-4  
 R.T.: 9.535 min  
 Delta R.T.: -0.023 min  
 Response: 58685  
 Conc: 18.25 ng/ml

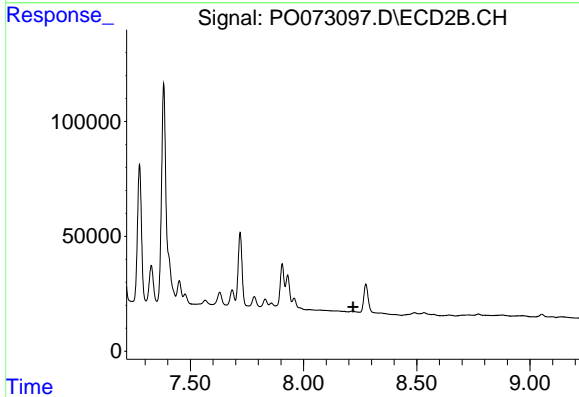


#39 AR-1262-4  
 R.T.: 8.275 min  
 Delta R.T.: -0.004 min  
 Response: 164620  
 Conc: 44.83 ng/ml

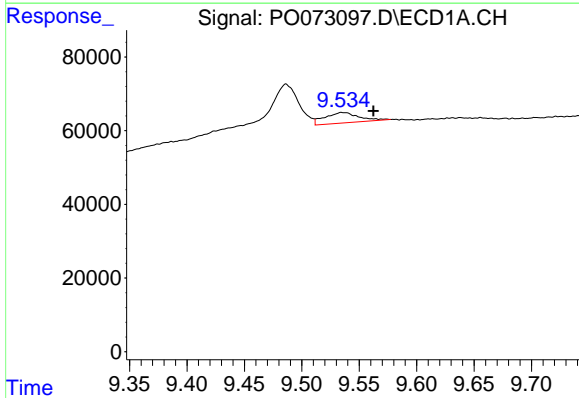


#41 AR-1268-1  
 R.T.: 9.486 min  
 Delta R.T.: 0.021 min  
 Response: 214160  
 Conc: 30.22 ng/ml

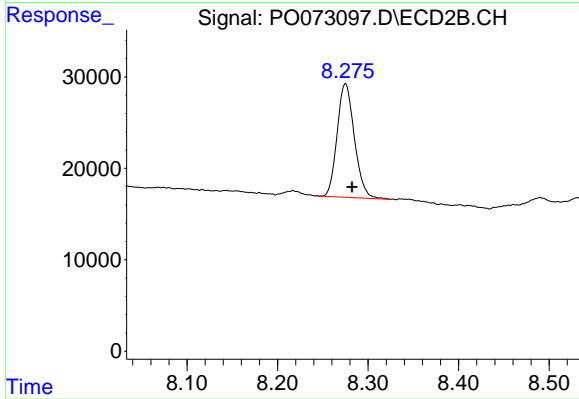
Instrument :  
 ECD\_O  
 ClientSampleId :  
 ICVPO110520



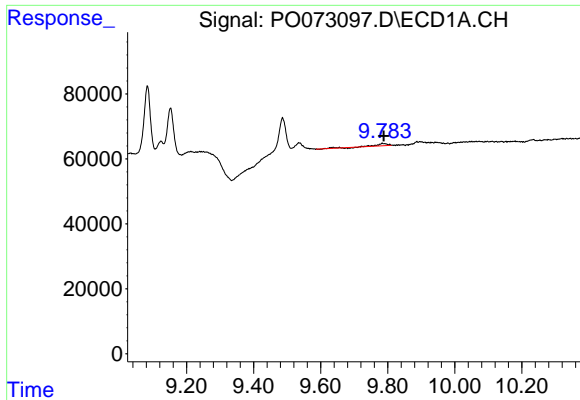
#41 AR-1268-1  
 R.T.: 0.000 min  
 Exp R.T. : 8.218 min  
 Response: 0  
 Conc: N.D.



#42 AR-1268-2  
 R.T.: 9.535 min  
 Delta R.T.: -0.027 min  
 Response: 58685  
 Conc: 9.06 ng/ml



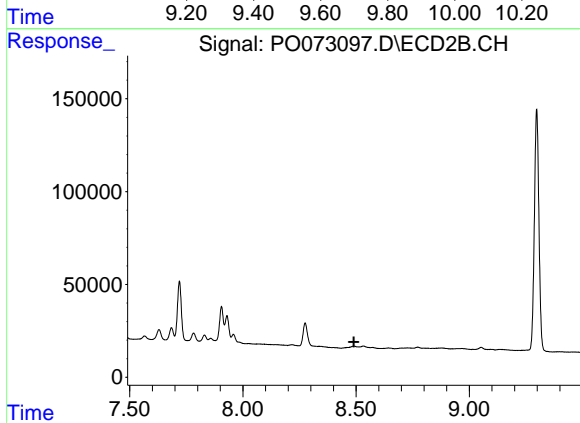
#42 AR-1268-2  
 R.T.: 8.275 min  
 Delta R.T.: -0.007 min  
 Response: 164620  
 Conc: 32.49 ng/ml



#43 AR-1268-3

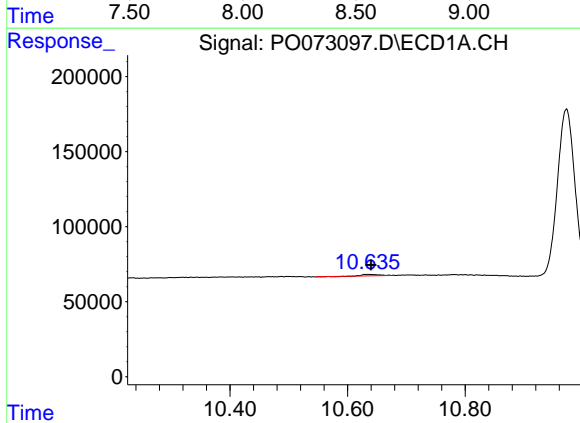
R.T.: 9.783 min  
 Delta R.T.: -0.005 min  
 Response: 13113  
 Conc: 2.35 ng/ml

**Instrument :**  
 ECD\_O  
**ClientSampled :**  
 ICVPO110520



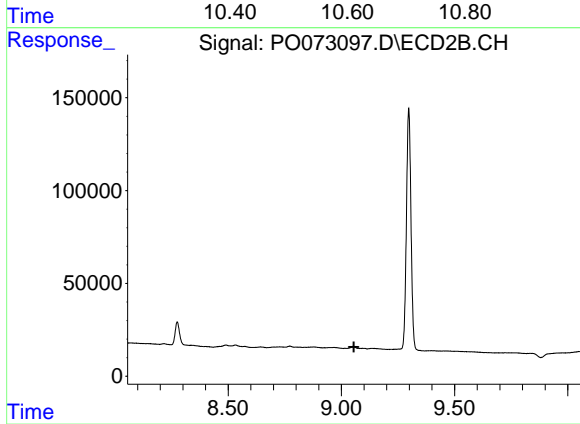
#43 AR-1268-3

R.T.: 0.000 min  
 Exp R.T. : 8.490 min  
 Response: 0  
 Conc: N.D.



#45 AR-1268-5

R.T.: 10.635 min  
 Delta R.T.: -0.005 min  
 Response: 17785  
 Conc: 1.10 ng/ml



#45 AR-1268-5

R.T.: 0.000 min  
 Exp R.T. : 9.055 min  
 Response: 0  
 Conc: N.D.