

Data Path : Z:\pestpcbsrv\HPCHEM1\ECD_0\Data\PO110420\
 Data File : PO073103.D
 Signal(s) : Signal #1: ECD1A.CH Signal #2: ECD2B.CH
 Acq On : 04 Nov 2020 21:35
 Operator : DD\AJ
 Sample : I.BLK
 Misc :
 ALS Vial : 2 Sample Multiplier: 1

Instrument :
 ECD_0
 ClientSampleId :
 FK-GF-02-063-ARE

Integration File signal 1: autoint1.e
 Integration File signal 2: autoint2.e
 Quant Time: Nov 05 05:52:19 2020
 Quant Method : Z:\pestpcbsrv\HPCHEM1\ECD_0\methods\PO110420.M
 Quant Title : GC EXTRACTABLES
 QLast Update : Thu Nov 05 05:38:46 2020
 Response via : Initial Calibration
 Integrator: ChemStation 6890 Scale Mode: Small noise peaks clipped

Volume Inj. : 2 µl
 Signal #1 Phase : ZB-MR1 Signal #2 Phase: ZB-MR2
 Signal #1 Info : 30Mx0.32mmx 0.50µ Signal #2 Info : 30M x 0.32mm x 0.25µm

Compound	RT#1	RT#2	Resp#1	Resp#2	ng/ml	ng/ml

System Monitoring Compounds						
1) SA Tetrachlo...	4.947	4.022	1213664	782478	22.900	21.897
2) SA Decachlor...	10.972	9.296	1043906	844484	25.226	25.313
Target Compounds						
28) L6 AR-1254-3	7.813f	0.000	26604	0	7.398	N.D. #
35) L7 AR-1260-5	9.144	0.000	6638	0	1.505	N.D. #
37) L8 AR-1262-2	9.144	0.000	6638	0	1.143	N.D. #
38) L8 AR-1262-3	9.484f	0.000	48652	0	11.697	N.D. #
41) L9 AR-1268-1	9.484f	0.000	48652	0	6.865	N.D. #

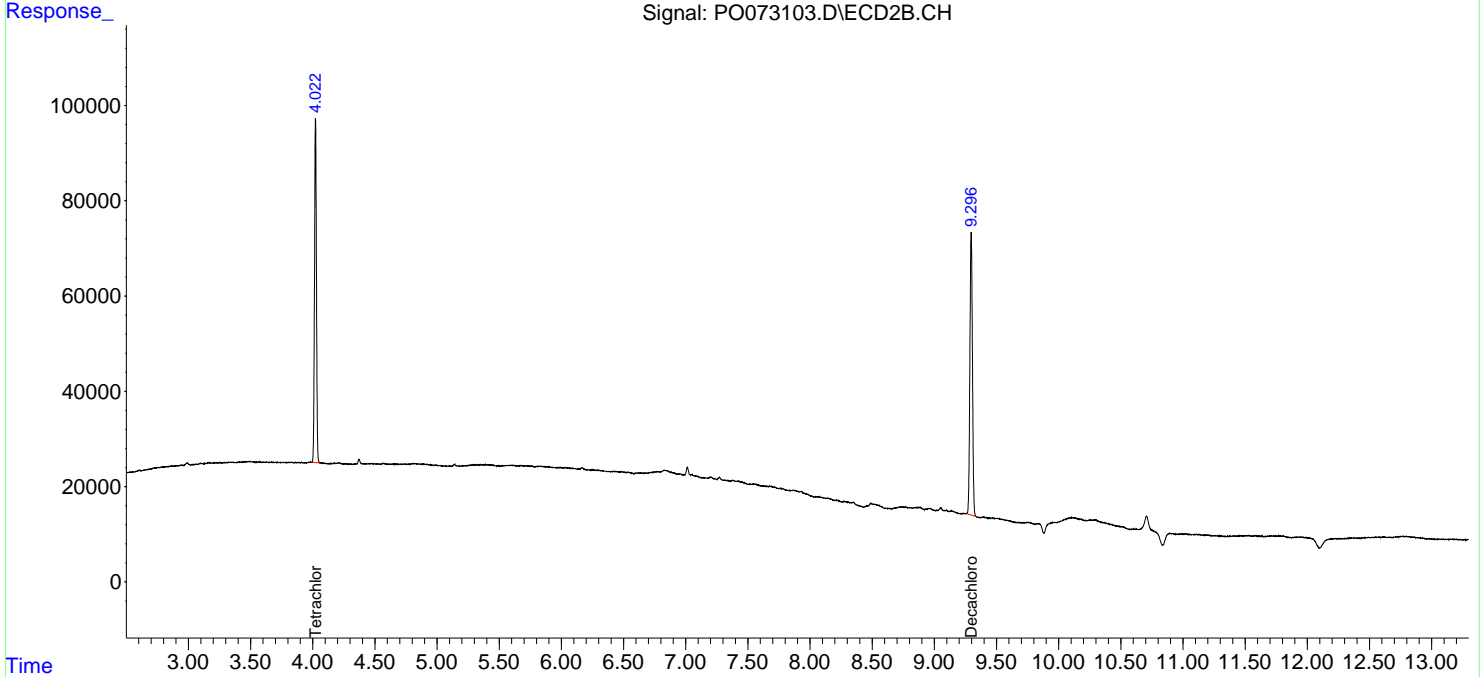
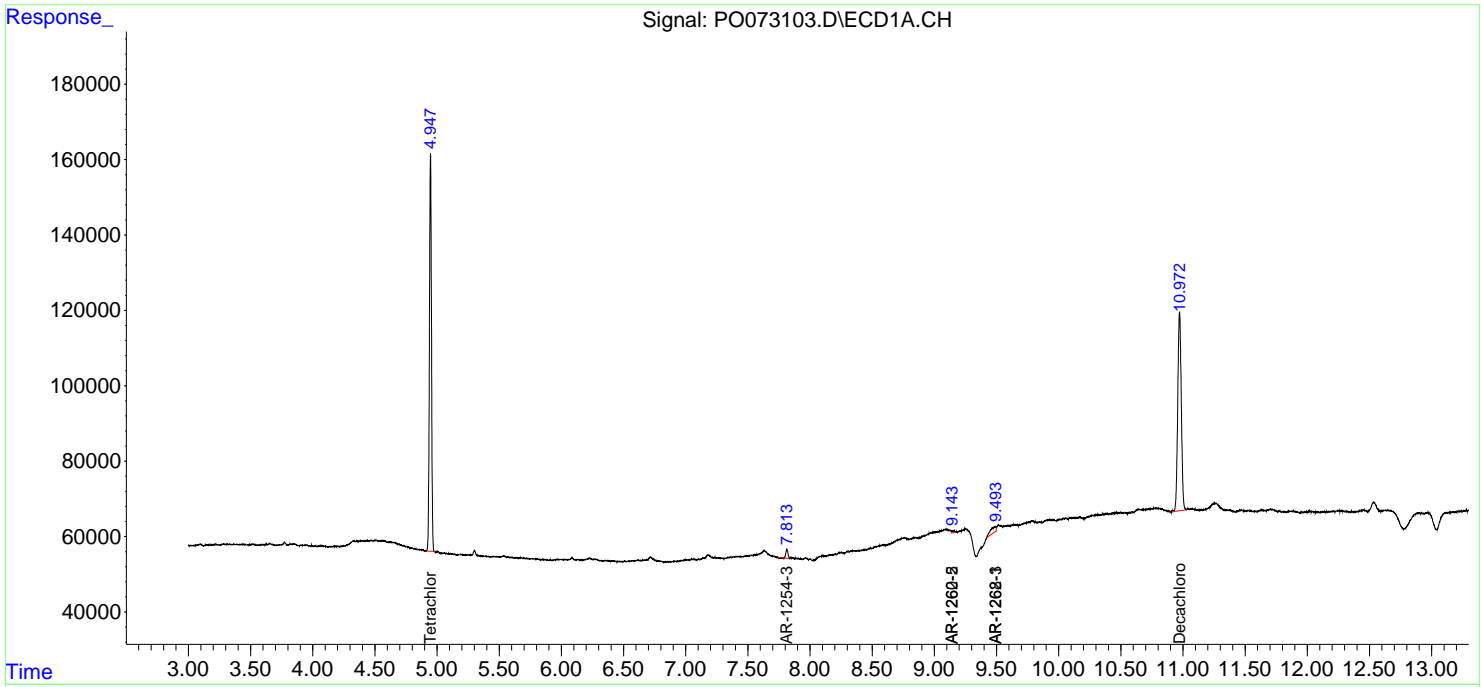
(f)=RT Delta > 1/2 Window (#)=Amounts differ by > 25% (m)=manual int.

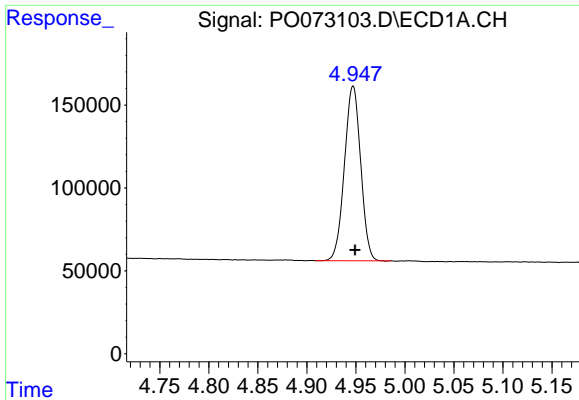
Data Path : Z:\pestpcbsrv\HPCHEM1\ECD_0\Data\PO110420\
 Data File : PO073103.D
 Signal(s) : Signal #1: ECD1A.CH Signal #2: ECD2B.CH
 Acq On : 04 Nov 2020 21:35
 Operator : DD\AJ
 Sample : I.BLK
 Misc :
 ALS Vial : 2 Sample Multiplier: 1

Instrument :
 ECD_O
 ClientSampled :
 FK-GF-02-063-ARE

Integration File signal 1: autoint1.e
 Integration File signal 2: autoint2.e
 Quant Time: Nov 05 05:52:19 2020
 Quant Method : Z:\pestpcbsrv\HPCHEM1\ECD_0\methods\PO110420.M
 Quant Title : GC EXTRACTABLES
 QLast Update : Thu Nov 05 05:38:46 2020
 Response via : Initial Calibration
 Integrator: ChemStation 6890 Scale Mode: Small noise peaks clipped

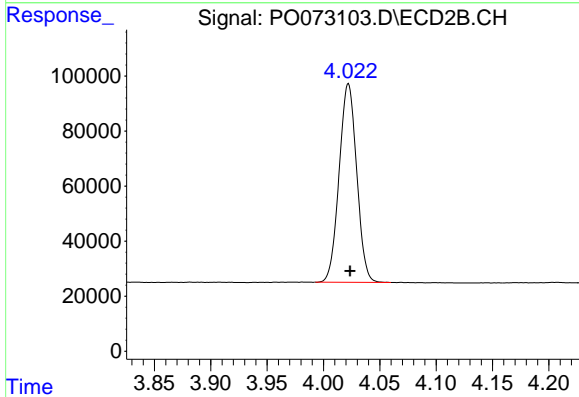
Volume Inj. : 2 µl
 Signal #1 Phase : ZB-MR1 Signal #2 Phase: ZB-MR2
 Signal #1 Info : 30Mx0.32mmx 0.50µ Signal #2 Info : 30M x 0.32mm x 0.25µm



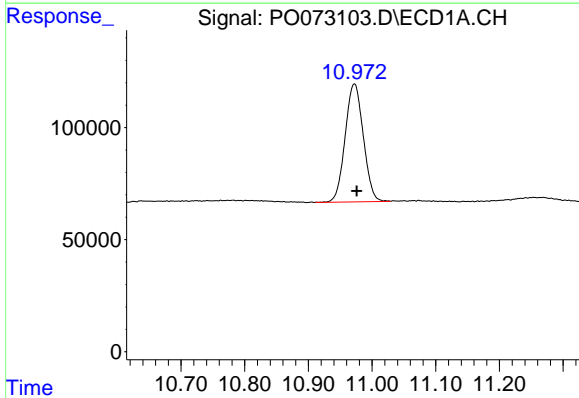


#1 Tetrachloro-m-xylene
 R.T.: 4.947 min
 Delta R.T.: -0.002 min
 Response: 1213664
 Conc: 22.90 ng/ml

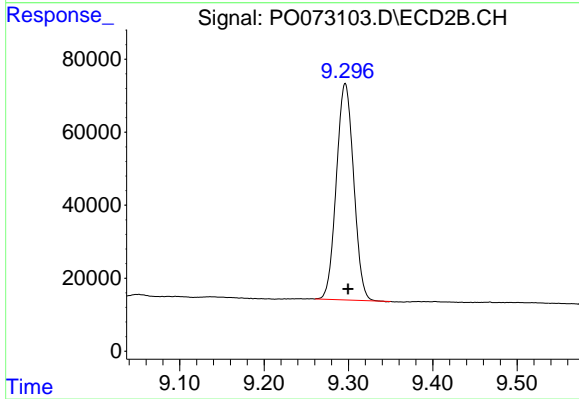
Instrument :
 ECD_O
 ClientSampleId :
 FK-GF-02-063-ARE



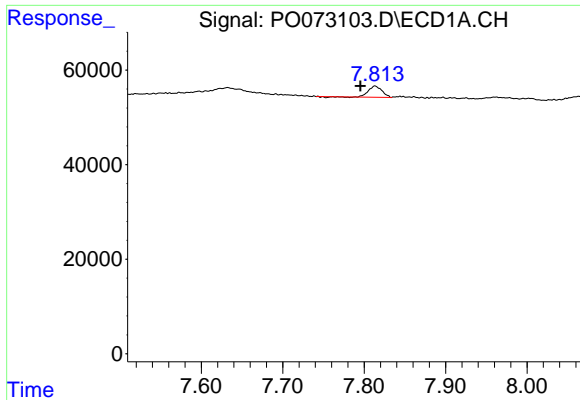
#1 Tetrachloro-m-xylene
 R.T.: 4.022 min
 Delta R.T.: -0.001 min
 Response: 782478
 Conc: 21.90 ng/ml



#2 Decachlorobiphenyl
 R.T.: 10.972 min
 Delta R.T.: -0.004 min
 Response: 1043906
 Conc: 25.23 ng/ml



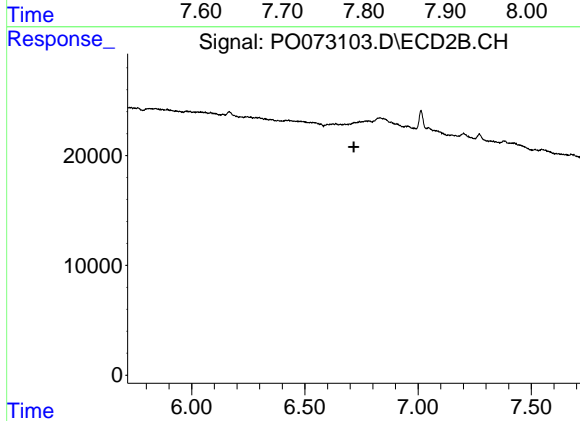
#2 Decachlorobiphenyl
 R.T.: 9.296 min
 Delta R.T.: -0.003 min
 Response: 844484
 Conc: 25.31 ng/ml



#28 AR-1254-3

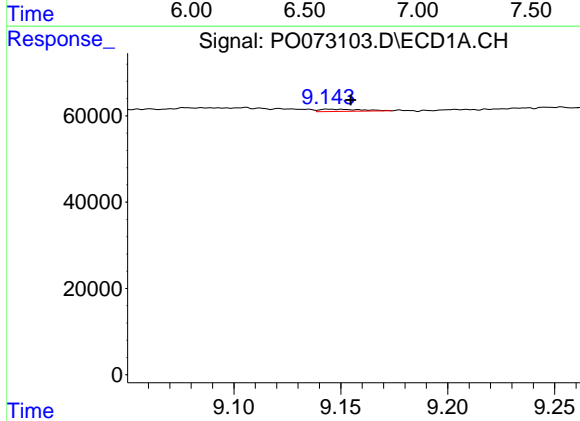
R.T.: 7.813 min
 Delta R.T.: 0.018 min
 Response: 26604
 Conc: 7.40 ng/ml

Instrument :
 ECD_O
 ClientSampleId :
 FK-GF-02-063-ARE



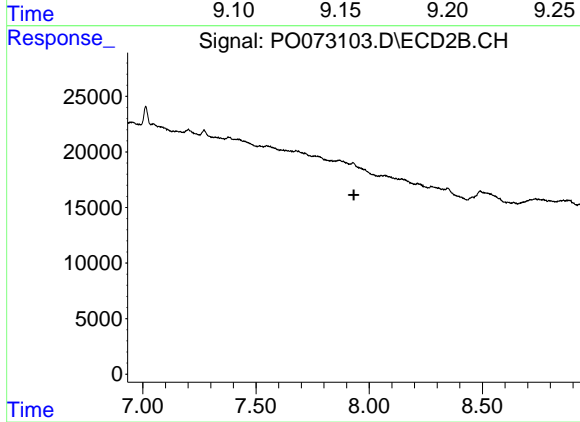
#28 AR-1254-3

R.T.: 0.000 min
 Exp R.T. : 6.717 min
 Response: 0
 Conc: N.D.



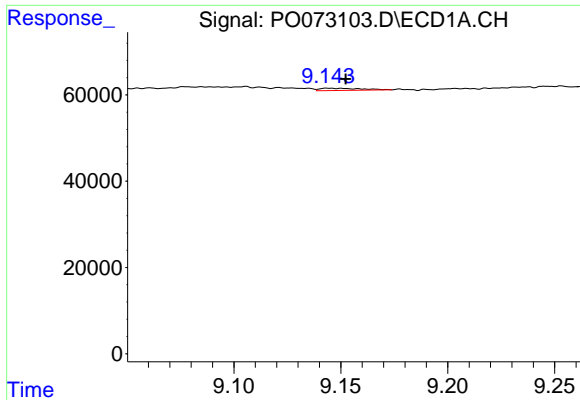
#35 AR-1260-5

R.T.: 9.144 min
 Delta R.T.: -0.010 min
 Response: 6638
 Conc: 1.50 ng/ml



#35 AR-1260-5

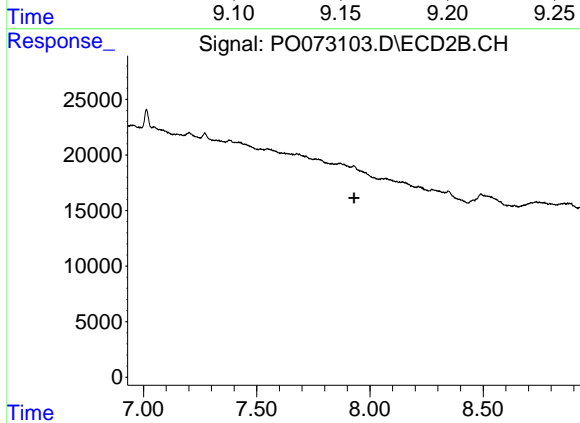
R.T.: 0.000 min
 Exp R.T. : 7.932 min
 Response: 0
 Conc: N.D.



#37 AR-1262-2

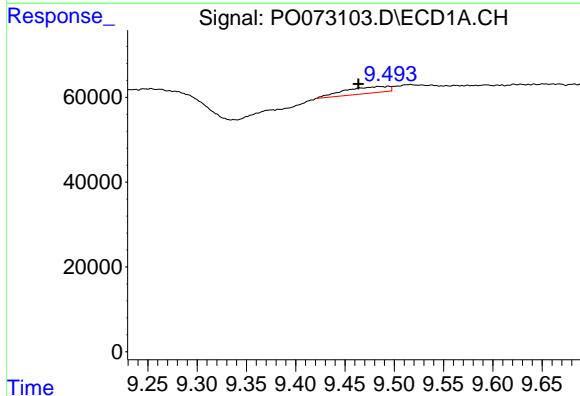
R.T.: 9.144 min
 Delta R.T.: -0.008 min
 Response: 6638
 Conc: 1.14 ng/ml

Instrument :
 ECD_O
 ClientSampleId :
 FK-GF-02-063-ARE



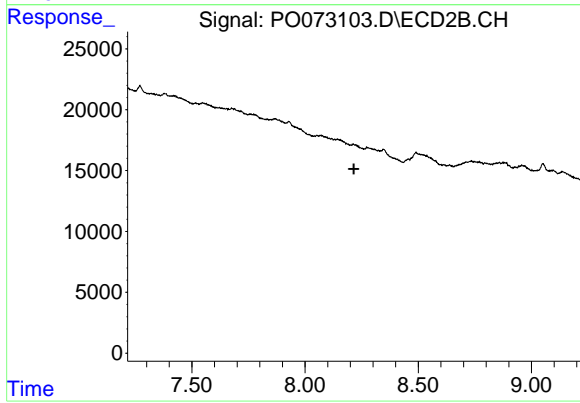
#37 AR-1262-2

R.T.: 0.000 min
 Exp R.T. : 7.929 min
 Response: 0
 Conc: N.D.



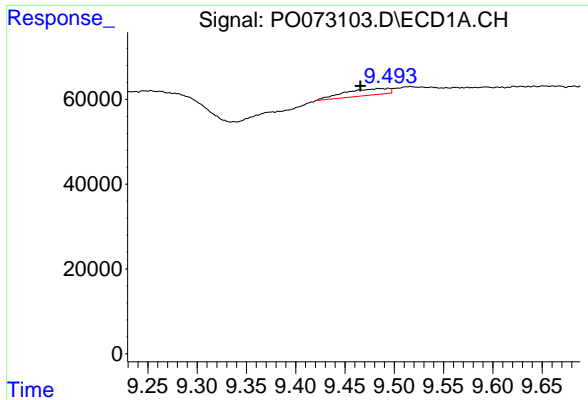
#38 AR-1262-3

R.T.: 9.484 min
 Delta R.T.: 0.020 min
 Response: 48652
 Conc: 11.70 ng/ml



#38 AR-1262-3

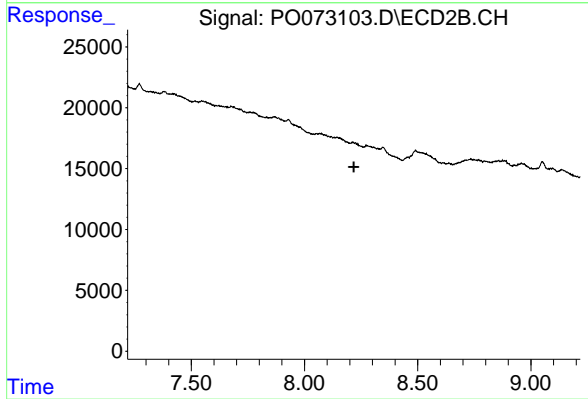
R.T.: 0.000 min
 Exp R.T. : 8.216 min
 Response: 0
 Conc: N.D.



#41 AR-1268-1

R.T.: 9.484 min
 Delta R.T.: 0.019 min
 Response: 48652
 Conc: 6.87 ng/ml

Instrument :
 ECD_O
ClientSampled :
 FK-GF-02-063-ARE



#41 AR-1268-1

R.T.: 0.000 min
 Exp R.T. : 8.218 min
 Response: 0
 Conc: N.D.