

Data Path : Z:\pestpcbsrv\HPCHEM1\ECD\_0\Data\PO110422\  
 Data File : PO090164.D  
 Signal(s) : Signal #1: ECD1A.ch Signal #2: ECD2B.ch  
 Acq On : 04 Nov 2022 10:16  
 Operator : YP/AJ  
 Sample : AR1254CCC500  
 Misc :  
 ALS Vial : 6 Sample Multiplier: 1

Instrument :  
 ECD\_0  
 ClientSampleId :  
 AR1254CCC500

Integration File signal 1: autoint1.e  
 Integration File signal 2: autoint2.e  
 Quant Time: Nov 05 03:02:35 2022  
 Quant Method : Z:\pestpcbsrv\HPCHEM1\ECD\_0\methods\PO102722.M  
 Quant Title : GC EXTRACTABLES  
 QLast Update : Fri Oct 28 05:05:44 2022  
 Response via : Initial Calibration  
 Integrator: ChemStation

Volume Inj. : 2 µl  
 Signal #1 Phase : ZB-MR1 Signal #2 Phase: ZB-MR2  
 Signal #1 Info : 30Mx0.32mmx 0.50µ Signal #2 Info : 30M x 0.32mm x 0.25µm

Compound	RT#1	RT#2	Resp#1	Resp#2	ng/ml	ng/ml
-----						
System Monitoring Compounds						
1) SA Tetrachlo...	4.304	3.483	184.9E6	62028504	57.544	58.364
2) SA Decachlor...	10.049	8.488	135.6E6	53636874	55.341	52.078
Target Compounds						
26) L6 AR-1254-1	6.339	5.373	59206595	32547233	510.855	552.534
27) L6 AR-1254-2	6.558	5.522	95121500	29399265	546.884	548.695
28) L6 AR-1254-3	6.926	5.926	96087409	44891289	553.482	541.625
29) L6 AR-1254-4	7.214	6.156	69395406	26812681	544.420	539.876
30) L6 AR-1254-5	7.635	6.575	75286821	40922556	534.482	546.541
-----						

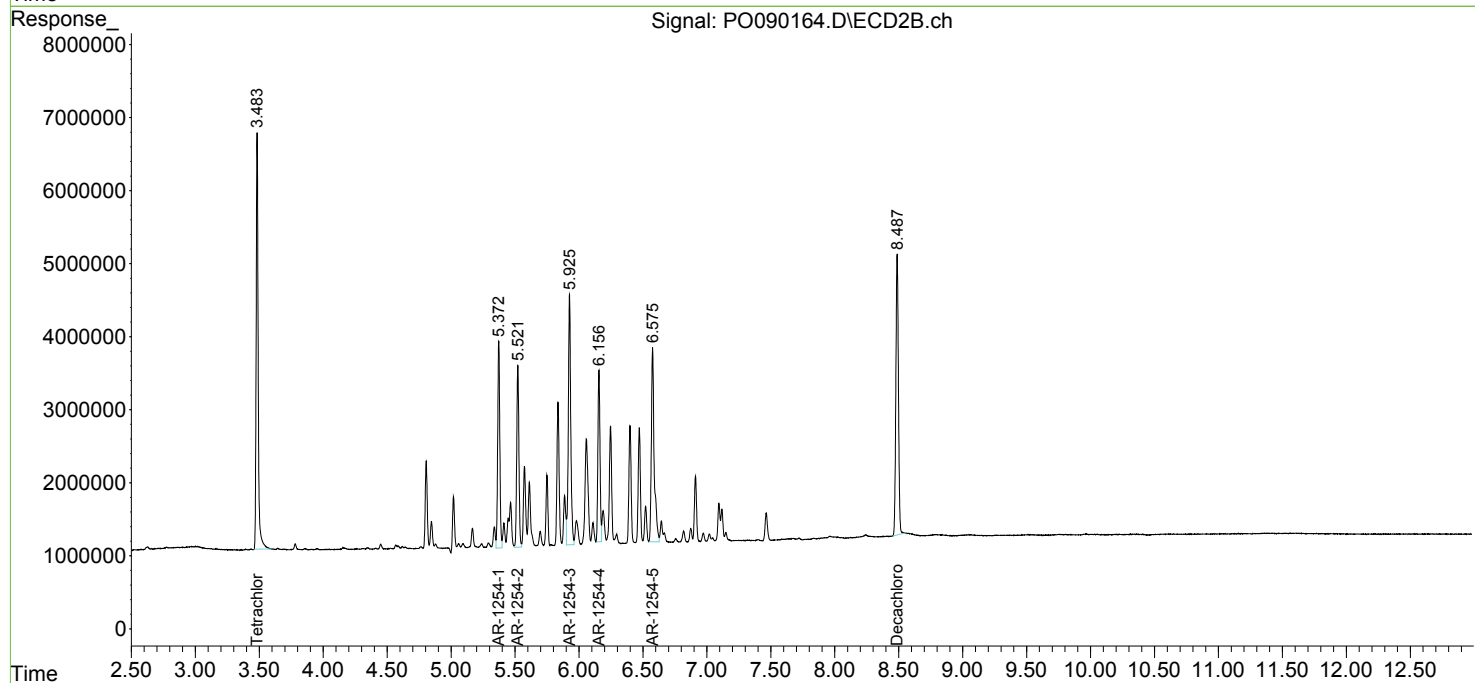
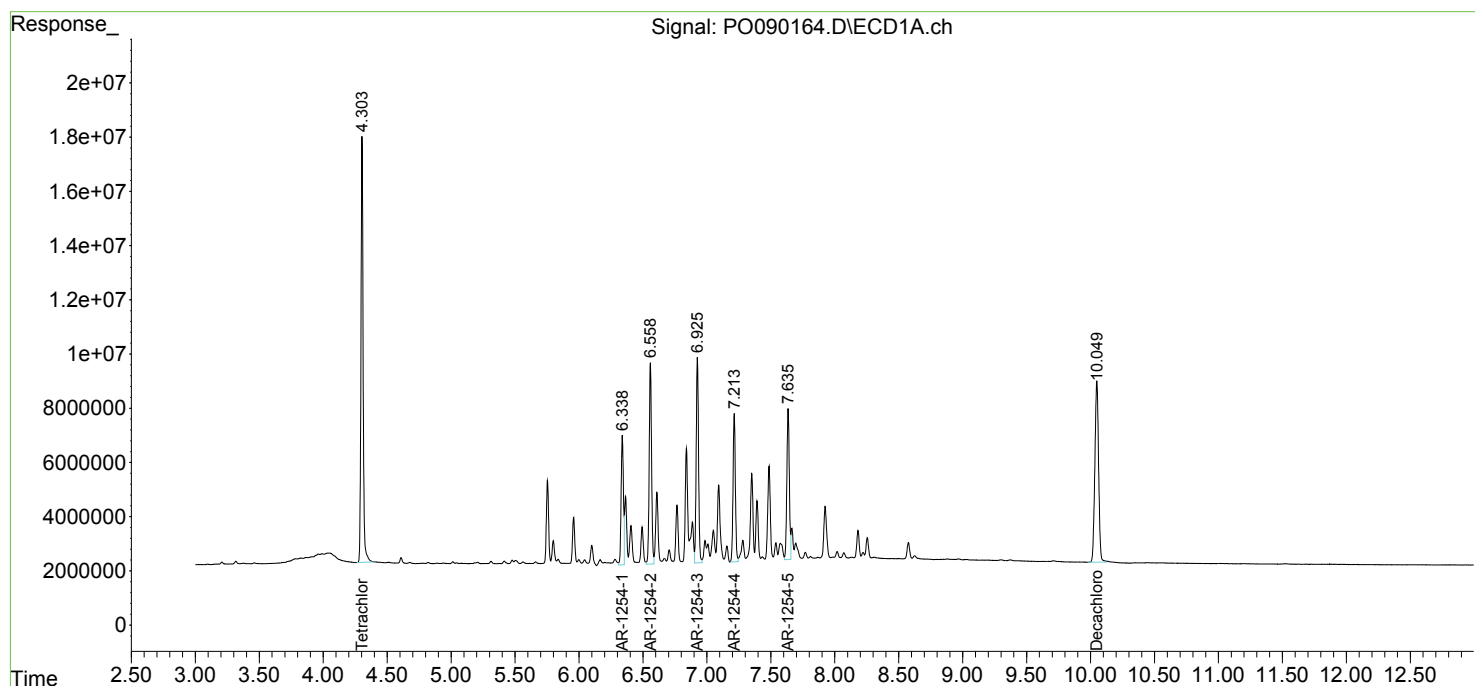
(f)=RT Delta > 1/2 Window (#)=Amounts differ by > 25% (m)=manual int.

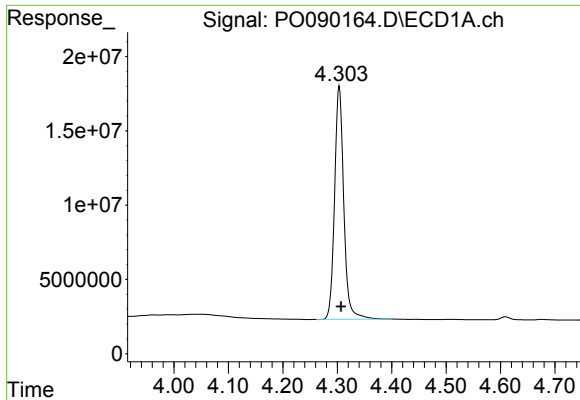
Data Path : Z:\pestpcbsrv\HPCHEM1\ECD\_0\Data\PO110422\  
 Data File : PO090164.D  
 Signal(s) : Signal #1: ECD1A.ch Signal #2: ECD2B.ch  
 Acq On : 04 Nov 2022 10:16  
 Operator : YP/AJ  
 Sample : AR1254CCC500  
 Misc :  
 ALS Vial : 6 Sample Multiplier: 1

Instrument :  
 ECD\_0  
 ClientSampleId :  
 AR1254CCC500

Integration File signal 1: autoint1.e  
 Integration File signal 2: autoint2.e  
 Quant Time: Nov 05 03:02:35 2022  
 Quant Method : Z:\pestpcbsrv\HPCHEM1\ECD\_0\methods\PO102722.M  
 Quant Title : GC EXTRACTABLES  
 QLast Update : Fri Oct 28 05:05:44 2022  
 Response via : Initial Calibration  
 Integrator: ChemStation

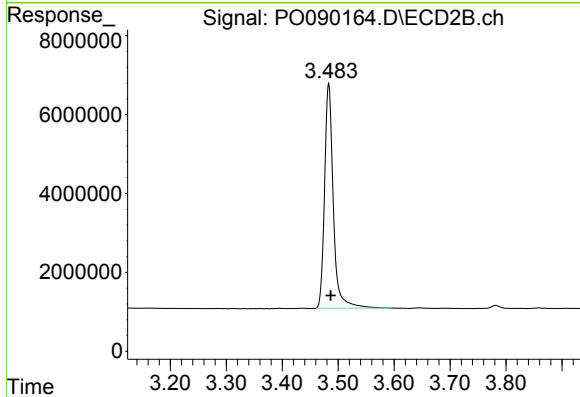
Volume Inj. : 2 µl  
 Signal #1 Phase : ZB-MR1 Signal #2 Phase: ZB-MR2  
 Signal #1 Info : 30Mx0.32mmx 0.50µm Signal #2 Info : 30M x 0.32mm x 0.25µm



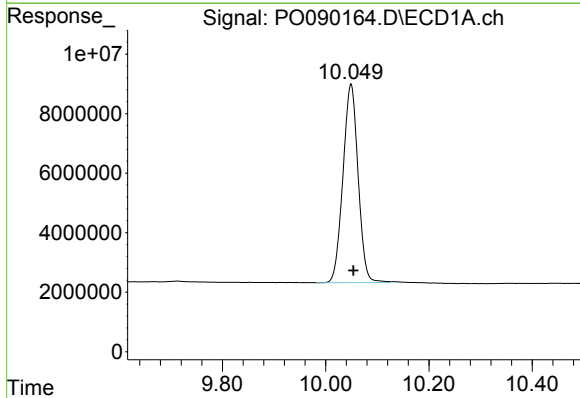


#1 Tetrachloro-m-xylene  
 R.T.: 4.304 min  
 Delta R.T.: -0.003 min  
 Response: 184941426  
 Conc: 57.54 ng/ml

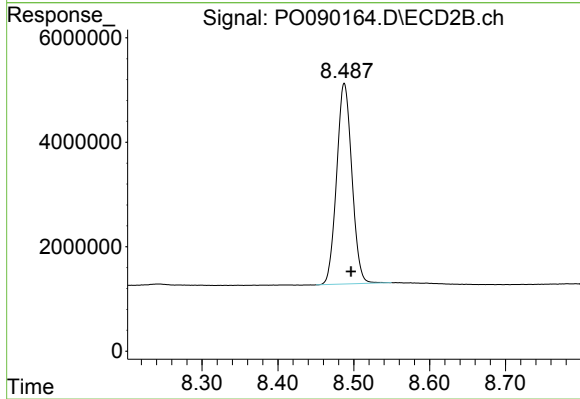
Instrument :  
 ECD\_O  
 ClientSampleId :  
 AR1254CCC500



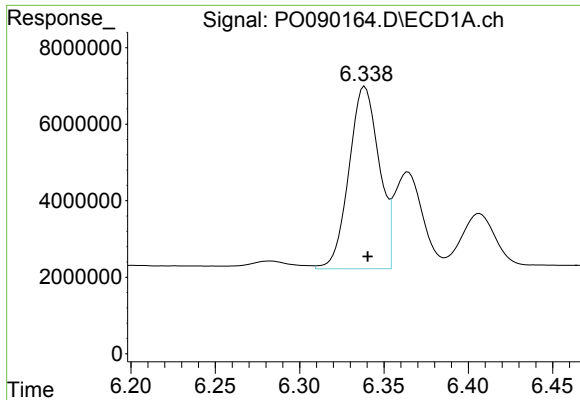
#1 Tetrachloro-m-xylene  
 R.T.: 3.483 min  
 Delta R.T.: -0.004 min  
 Response: 62028504  
 Conc: 58.36 ng/ml



#2 Decachlorobiphenyl  
 R.T.: 10.049 min  
 Delta R.T.: -0.005 min  
 Response: 135615326  
 Conc: 55.34 ng/ml



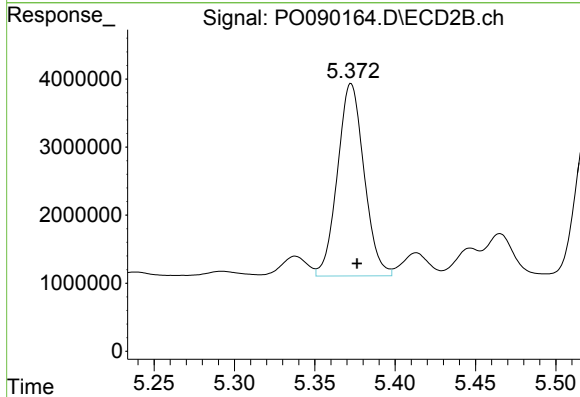
#2 Decachlorobiphenyl  
 R.T.: 8.488 min  
 Delta R.T.: -0.009 min  
 Response: 53636874  
 Conc: 52.08 ng/ml



#26 AR-1254-1

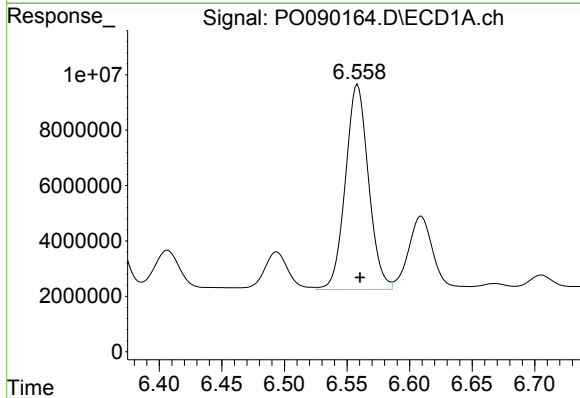
R.T.: 6.339 min  
 Delta R.T.: -0.002 min  
 Response: 59206595  
 Conc: 510.85 ng/ml

Instrument :  
 ECD\_O  
 ClientSampleId :  
 AR1254CCC500



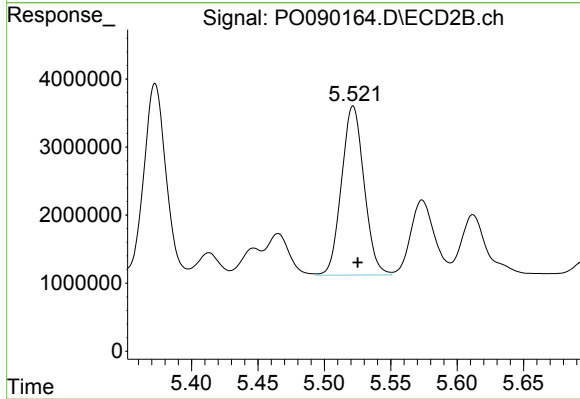
#26 AR-1254-1

R.T.: 5.373 min  
 Delta R.T.: -0.004 min  
 Response: 32547233  
 Conc: 552.53 ng/ml



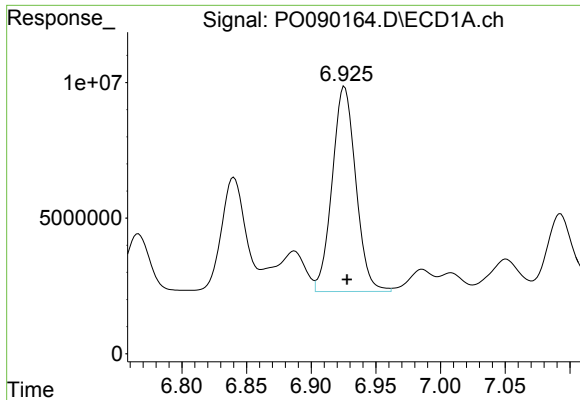
#27 AR-1254-2

R.T.: 6.558 min  
 Delta R.T.: -0.002 min  
 Response: 95121500  
 Conc: 546.88 ng/ml



#27 AR-1254-2

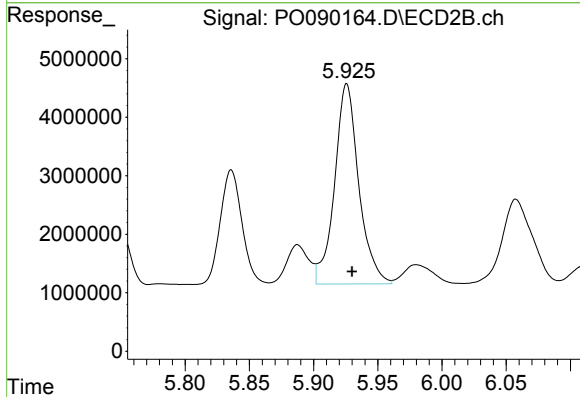
R.T.: 5.522 min  
 Delta R.T.: -0.003 min  
 Response: 29399265  
 Conc: 548.70 ng/ml



#28 AR-1254-3

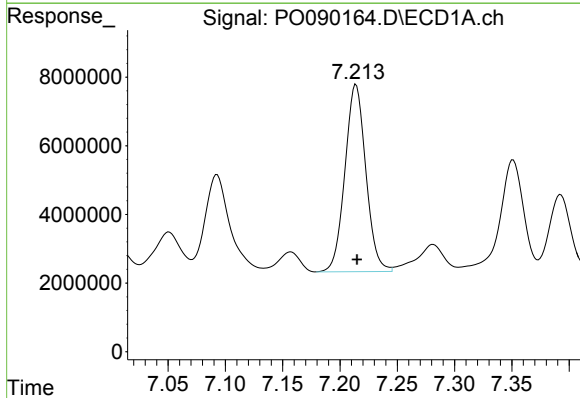
R.T.: 6.926 min  
 Delta R.T.: -0.002 min  
 Response: 96087409  
 Conc: 553.48 ng/ml

Instrument :  
 ECD\_O  
 ClientSampleId :  
 AR1254CCC500



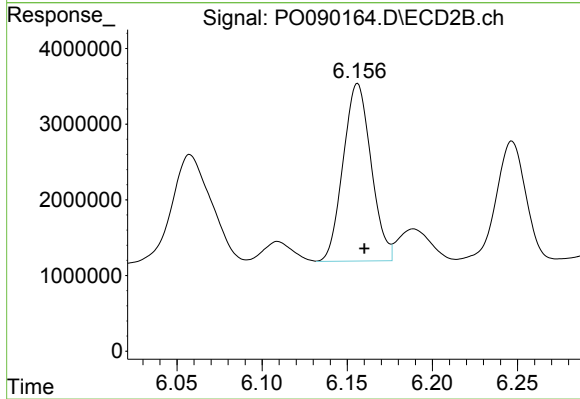
#28 AR-1254-3

R.T.: 5.926 min  
 Delta R.T.: -0.004 min  
 Response: 44891289  
 Conc: 541.62 ng/ml



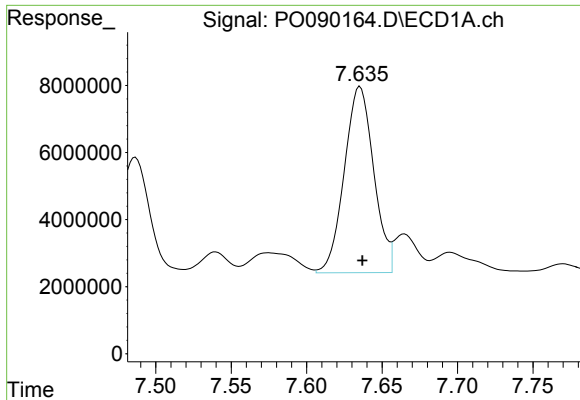
#29 AR-1254-4

R.T.: 7.214 min  
 Delta R.T.: 0.000 min  
 Response: 69395406  
 Conc: 544.42 ng/ml



#29 AR-1254-4

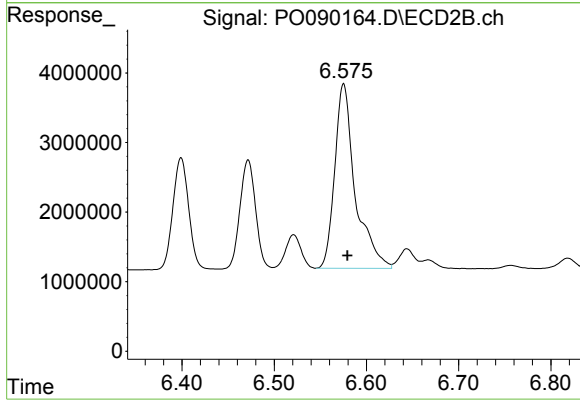
R.T.: 6.156 min  
 Delta R.T.: -0.004 min  
 Response: 26812681  
 Conc: 539.88 ng/ml



#30 AR-1254-5

R.T.: 7.635 min  
Delta R.T.: -0.002 min  
Response: 75286821  
Conc: 534.48 ng/ml

Instrument :  
ECD\_O  
ClientSampleId :  
AR1254CCC500



#30 AR-1254-5

R.T.: 6.575 min  
Delta R.T.: -0.004 min  
Response: 40922556  
Conc: 546.54 ng/ml