

Data Path : Z:\pestpcbsrv\HPCHEM1\ECD_0\Data\PO110422\
 Data File : PO090165.D
 Signal(s) : Signal #1: ECD1A.ch Signal #2: ECD2B.ch
 Acq On : 04 Nov 2022 10:33
 Operator : YP/AJ
 Sample : I.BLK
 Misc :
 ALS Vial : 2 Sample Multiplier: 1

Instrument :
 ECD_0
 ClientSampleId :
 I.BLK

Integration File signal 1: autoint1.e
 Integration File signal 2: autoint2.e
 Quant Time: Nov 05 03:03:11 2022
 Quant Method : Z:\pestpcbsrv\HPCHEM1\ECD_0\methods\PO102722.M
 Quant Title : GC EXTRACTABLES
 QLast Update : Fri Oct 28 05:05:44 2022
 Response via : Initial Calibration
 Integrator: ChemStation

Volume Inj. : 2 µl
 Signal #1 Phase : ZB-MR1 Signal #2 Phase: ZB-MR2
 Signal #1 Info : 30Mx0.32mmx 0.50µ Signal #2 Info : 30M x 0.32mm x 0.25µm

Compound	RT#1	RT#2	Resp#1	Resp#2	ng/ml	ng/ml

System Monitoring Compounds						
1) SA Tetrachlo...	4.304	3.483	66048834	22297511	20.551	20.980
2) SA Decachlor...	10.047	8.487	52969377	21605258	21.615	20.977

Target Compounds

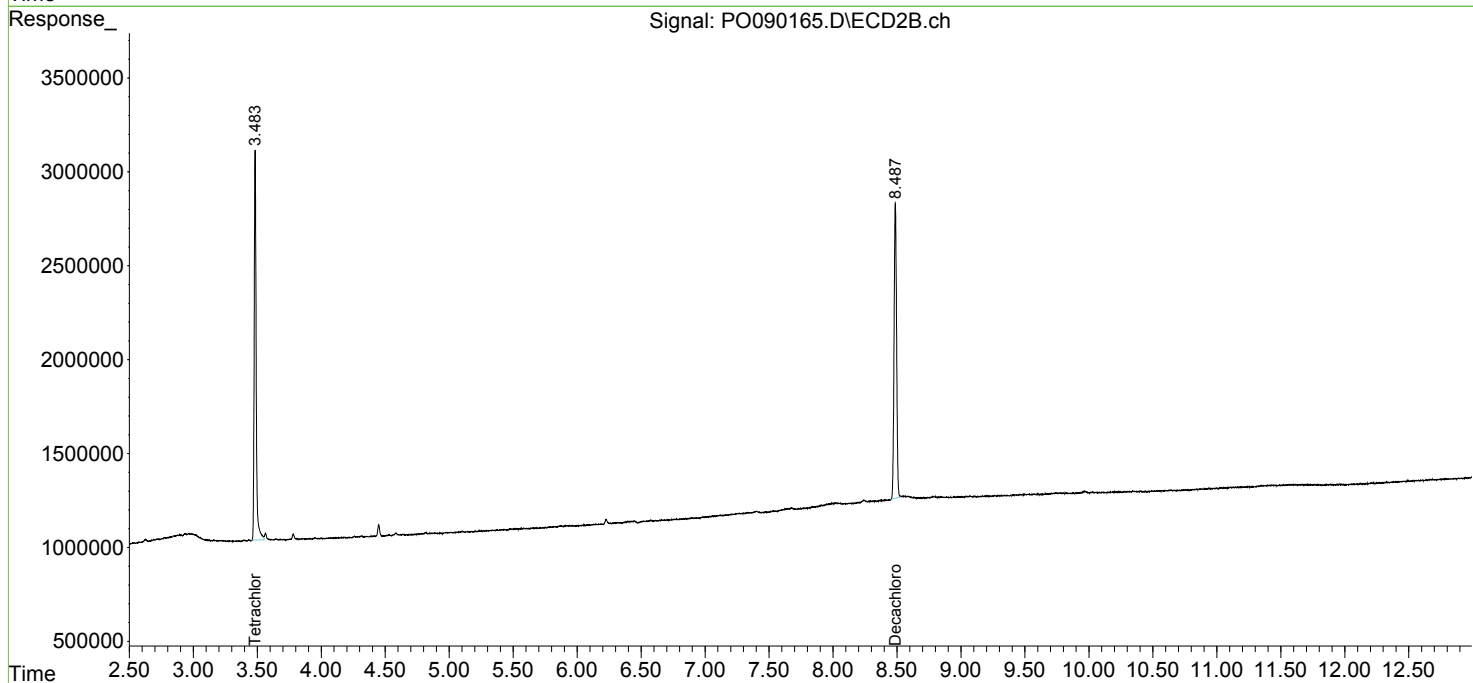
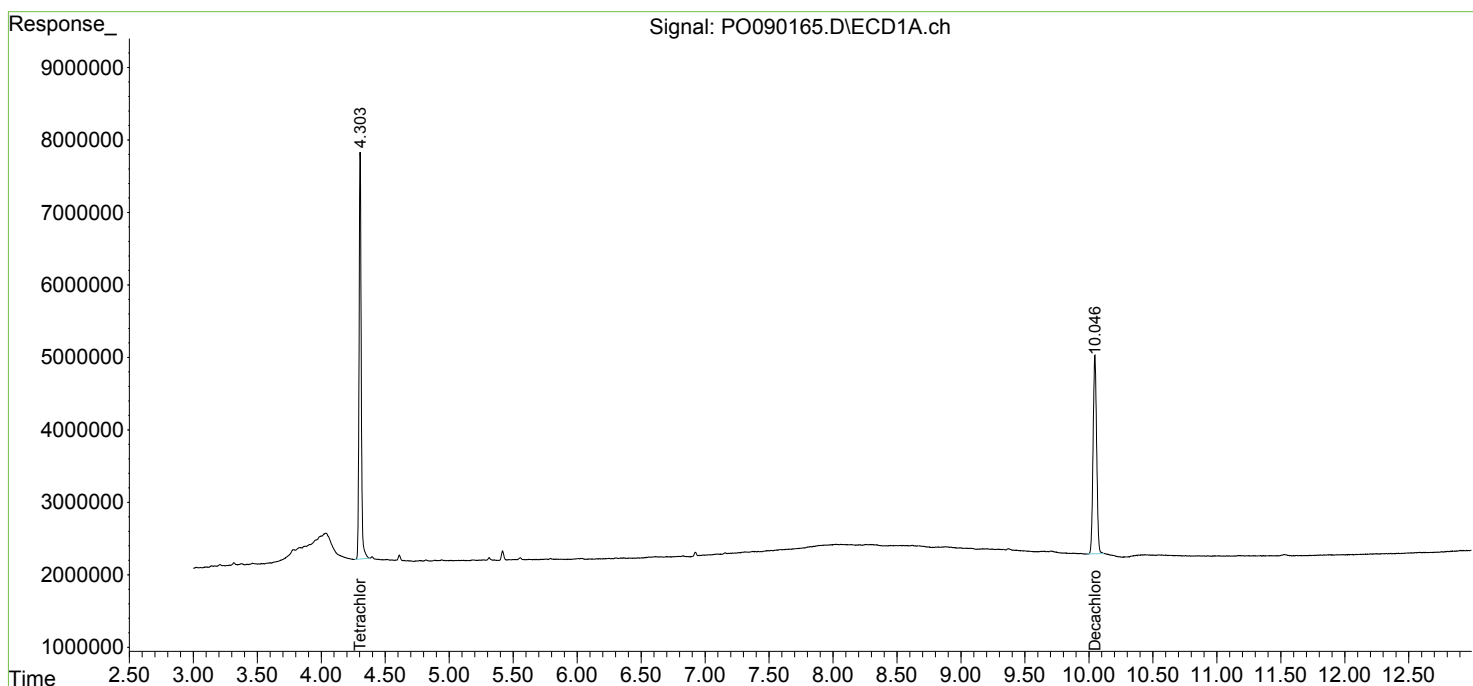
(f)=RT Delta > 1/2 Window (#)=Amounts differ by > 25% (m)=manual int.

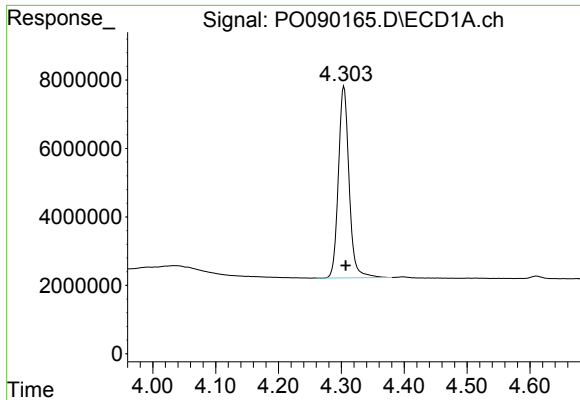
Data Path : Z:\pestpcbsrv\HPCHEM1\ECD_O\Data\PO110422\
 Data File : PO090165.D
 Signal(s) : Signal #1: ECD1A.ch Signal #2: ECD2B.ch
 Acq On : 04 Nov 2022 10:33
 Operator : YP/AJ
 Sample : I.BLK
 Misc :
 ALS Vial : 2 Sample Multiplier: 1

Instrument :
 ECD_O
 ClientSampleId :
 I.BLK

Integration File signal 1: autoint1.e
 Integration File signal 2: autoint2.e
 Quant Time: Nov 05 03:03:11 2022
 Quant Method : Z:\pestpcbsrv\HPCHEM1\ECD_O\methods\PO102722.M
 Quant Title : GC EXTRACTABLES
 QLast Update : Fri Oct 28 05:05:44 2022
 Response via : Initial Calibration
 Integrator: ChemStation

Volume Inj. : 2 µl
 Signal #1 Phase : ZB-MR1 Signal #2 Phase: ZB-MR2
 Signal #1 Info : 30Mx0.32mmx 0.50µ Signal #2 Info : 30M x 0.32mm x 0.25µm

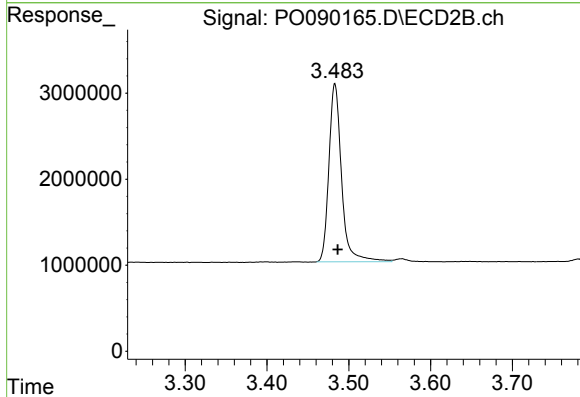




#1 Tetrachloro-m-xylene

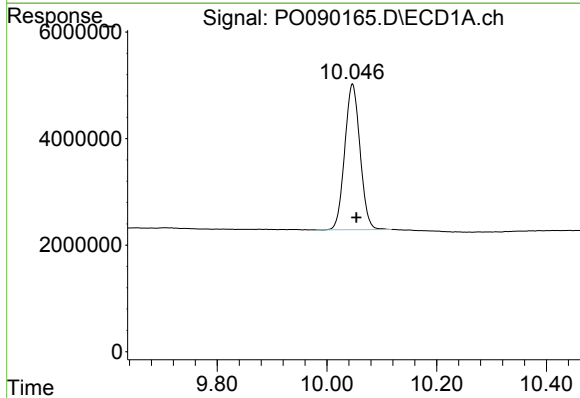
R.T.: 4.304 min
 Delta R.T.: -0.003 min
 Response: 66048834
 Conc: 20.55 ng/ml

Instrument :
 ECD_O
 ClientSampleId :
 I.BLK



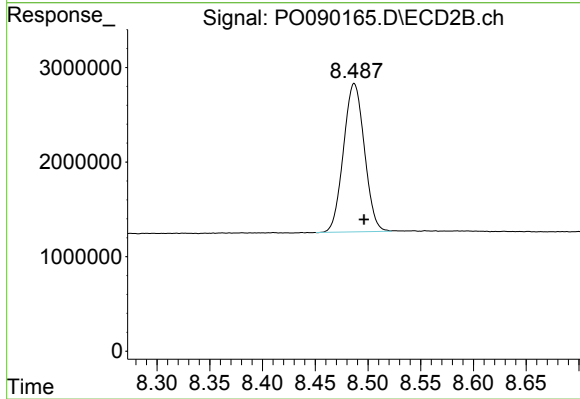
#1 Tetrachloro-m-xylene

R.T.: 3.483 min
 Delta R.T.: -0.004 min
 Response: 22297511
 Conc: 20.98 ng/ml



#2 Decachlorobiphenyl

R.T.: 10.047 min
 Delta R.T.: -0.007 min
 Response: 52969377
 Conc: 21.62 ng/ml



#2 Decachlorobiphenyl

R.T.: 8.487 min
 Delta R.T.: -0.009 min
 Response: 21605258
 Conc: 20.98 ng/ml