

Data Path : Z:\pestpcbsrv\HPCHEM1\ECD_0\Data\PO110422\
 Data File : PO090173.D
 Signal(s) : Signal #1: ECD1A.ch Signal #2: ECD2B.ch
 Acq On : 04 Nov 2022 12:58
 Operator : YP/AJ
 Sample : N5425-01
 Misc :
 ALS Vial : 14 Sample Multiplier: 1

Instrument :
 ECD_0
 ClientSampleId :
 371

Integration File signal 1: autoint1.e
 Integration File signal 2: autoint2.e
 Quant Time: Nov 05 03:12:09 2022
 Quant Method : Z:\pestpcbsrv\HPCHEM1\ECD_0\methods\PO102722.M
 Quant Title : GC EXTRACTABLES
 QLast Update : Fri Oct 28 05:05:44 2022
 Response via : Initial Calibration
 Integrator: ChemStation

Volume Inj. : 2 µl
 Signal #1 Phase : ZB-MR1 Signal #2 Phase: ZB-MR2
 Signal #1 Info : 30Mx0.32mmx 0.50µ Signal #2 Info : 30M x 0.32mm x 0.25µm

Compound	RT#1	RT#2	Resp#1	Resp#2	ng/ml	ng/ml

System Monitoring Compounds						
1) SA Tetrachlo...	4.306	3.485	74820091	21871648	23.280	20.579
2) SA Decachlor...	10.052	8.490	53357950	20581409	21.774	19.983

Target Compounds

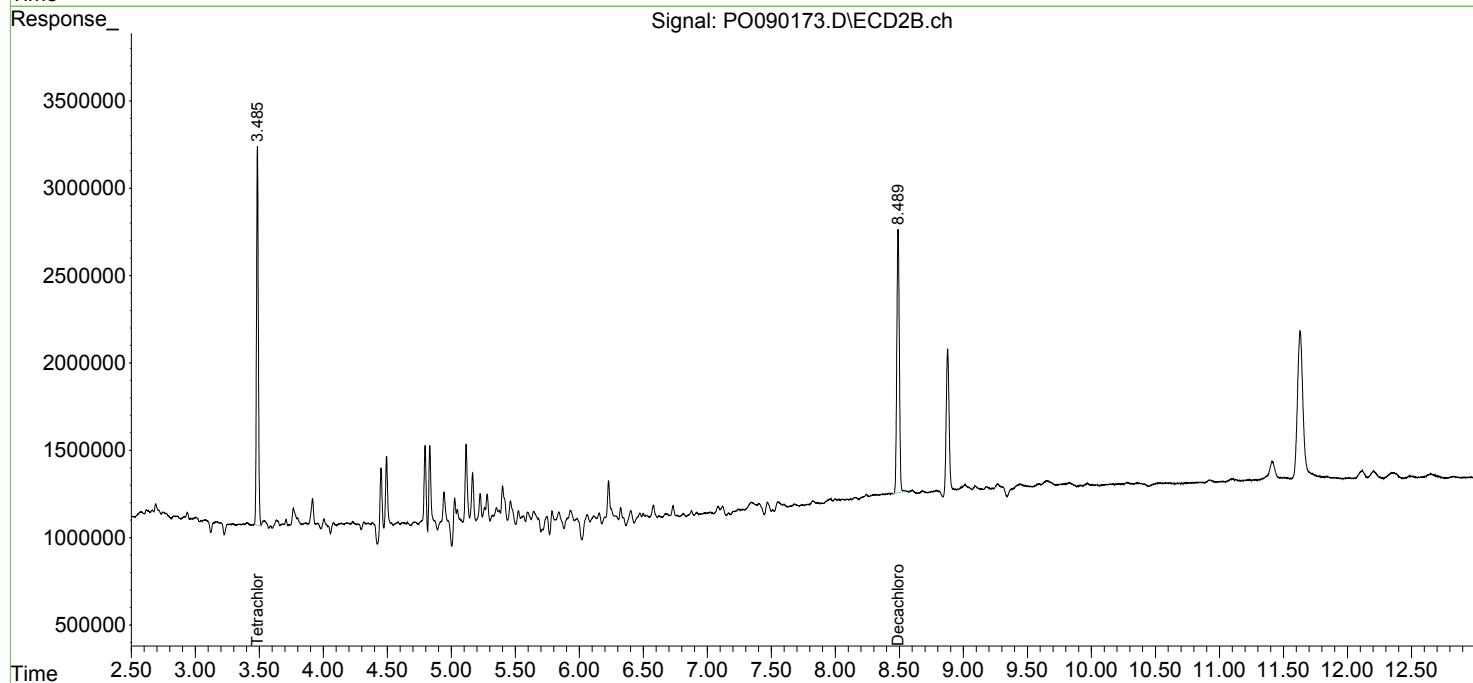
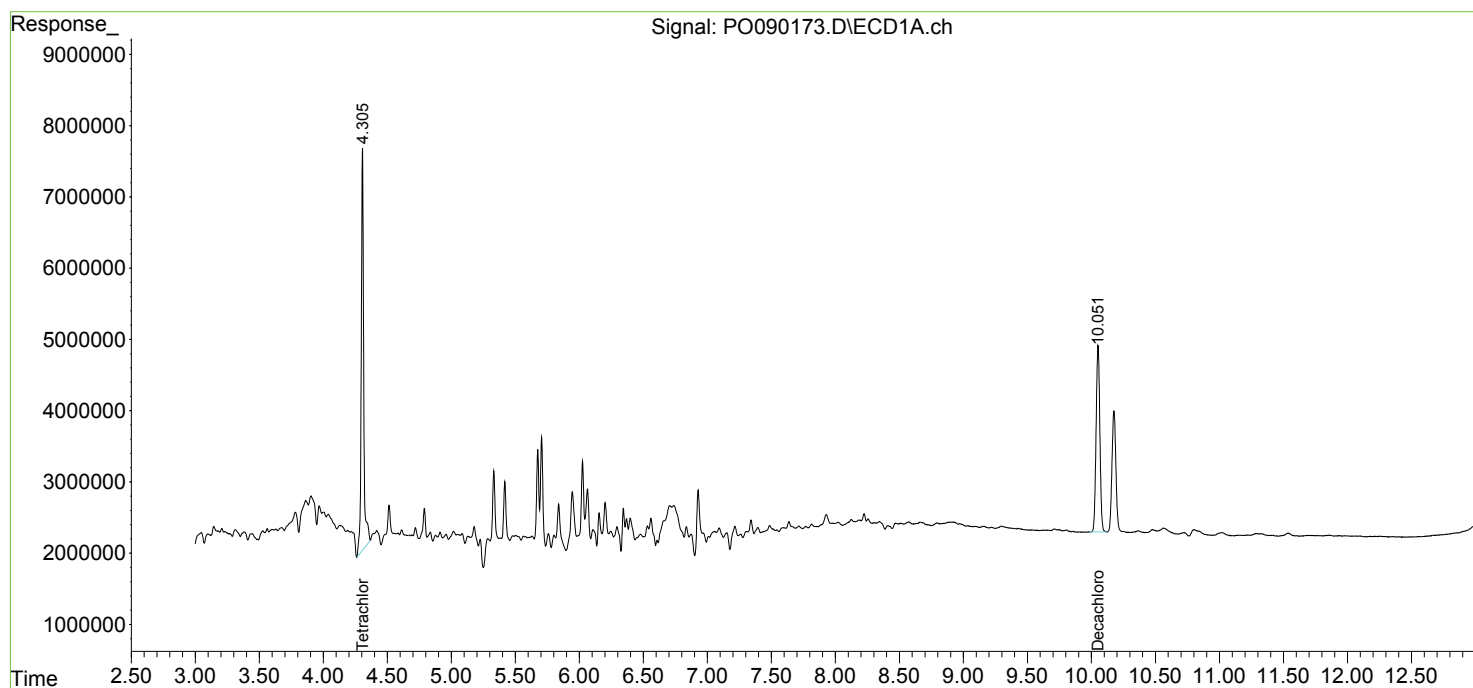
(f)=RT Delta > 1/2 Window (#)=Amounts differ by > 25% (m)=manual int.

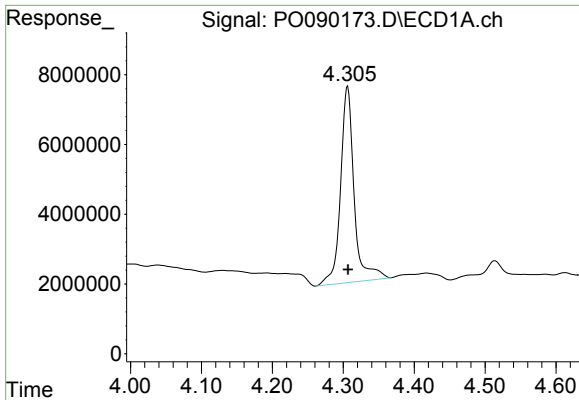
Data Path : Z:\pestpcbsrv\HPCHEM1\ECD_O\Data\PO110422\
Data File : PO090173.D
Signal(s) : Signal #1: ECD1A.ch Signal #2: ECD2B.ch
Acq On : 04 Nov 2022 12:58
Operator : YP/AJ
Sample : N5425-01
Misc :
ALS Vial : 14 Sample Multiplier: 1

Instrument :
ECD_O
ClientSampleId :
371

Integration File signal 1: autoint1.e
Integration File signal 2: autoint2.e
Quant Time: Nov 05 03:12:09 2022
Quant Method : Z:\pestpcbsrv\HPCHEM1\ECD_O\methods\PO102722.M
Quant Title : GC EXTRACTABLES
QLast Update : Fri Oct 28 05:05:44 2022
Response via : Initial Calibration
Integrator: ChemStation

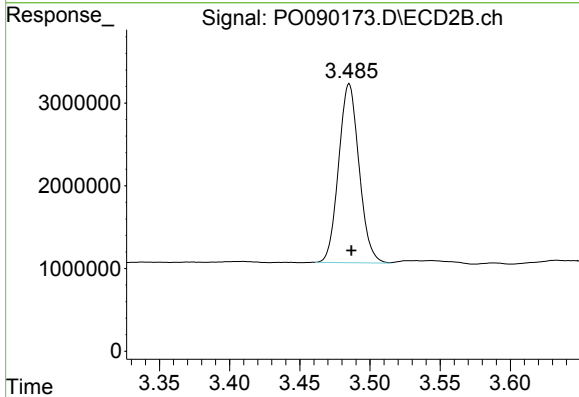
Volume Inj. : 2 µl
Signal #1 Phase : ZB-MR1 Signal #2 Phase: ZB-MR2
Signal #1 Info : 30Mx0.32mmx 0.50µ Signal #2 Info : 30M x 0.32mm x 0.25µm



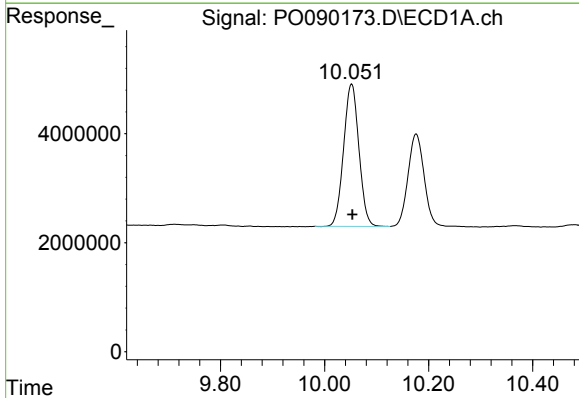


#1 Tetrachloro-m-xylene
 R.T.: 4.306 min
 Delta R.T.: 0.000 min
 Response: 74820091
 Conc: 23.28 ng/ml

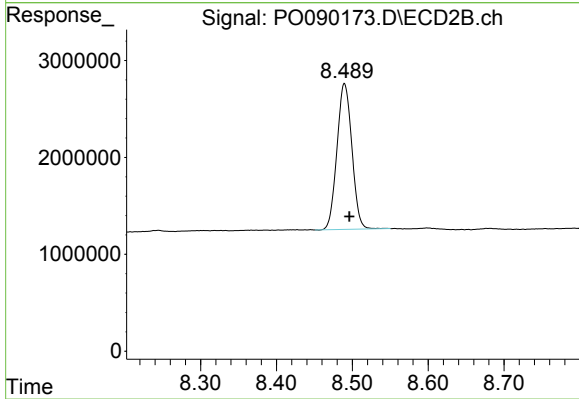
Instrument :
 ECD_O
 ClientSampleId :
 371



#1 Tetrachloro-m-xylene
 R.T.: 3.485 min
 Delta R.T.: -0.001 min
 Response: 21871648
 Conc: 20.58 ng/ml



#2 Decachlorobiphenyl
 R.T.: 10.052 min
 Delta R.T.: -0.002 min
 Response: 53357950
 Conc: 21.77 ng/ml



#2 Decachlorobiphenyl
 R.T.: 8.490 min
 Delta R.T.: -0.007 min
 Response: 20581409
 Conc: 19.98 ng/ml