

Data Path : Z:\pestpcbsrv\HPCHEM1\ECD\_0\Data\PO110422\  
 Data File : PO090187.D  
 Signal(s) : Signal #1: ECD1A.ch Signal #2: ECD2B.ch  
 Acq On : 04 Nov 2022 17:13  
 Operator : YP/AJ  
 Sample : N5436-02  
 Misc :  
 ALS Vial : 22 Sample Multiplier: 1

Instrument :  
 ECD\_0  
 ClientSampleId :  
 250FERRYBLVD-TFS-02

Integration File signal 1: autoint1.e  
 Integration File signal 2: autoint2.e  
 Quant Time: Nov 05 03:27:18 2022  
 Quant Method : Z:\pestpcbsrv\HPCHEM1\ECD\_0\methods\PO102722.M  
 Quant Title : GC EXTRACTABLES  
 QLast Update : Fri Oct 28 05:05:44 2022  
 Response via : Initial Calibration  
 Integrator: ChemStation

Volume Inj. : 2 µl  
 Signal #1 Phase : ZB-MR2 Signal #2 Phase: ZB-MR2  
 Signal #1 Info : 30Mx0.32mmx 0.50µ Signal #2 Info : 30M x 0.32mm x 0.25µm

	Compound	RT#1	RT#2	Resp#1	Resp#2	ng/ml	ng/ml
-----							
System Monitoring Compounds							
1)	SA Tetrachlo...	4.305	3.484	58151626	16918796	18.094	15.919
2)	SA Decachlor...	10.054	8.492	598.1E6	208.6E6	244.067	202.511
Target Compounds							
21)	L5 AR-1248-1	5.482	4.572	205.4E6	97254519	3247.538	4283.939 #
22)	L5 AR-1248-2	5.759	4.809	218.1E6	78419077	2303.249	2412.013
23)	L5 AR-1248-3	5.963	4.851	176.8E6	81344482	1793.350	2413.207 #
24)	L5 AR-1248-4	6.369	5.022	205.6E6	57563569	1928.595	1488.460
25)	L5 AR-1248-5	6.408	5.417	229.6E6	84395631	2185.652	2330.818
41)	L9 AR-1268-1	8.567	7.407	8613.3E6	2863.2E6	24705.462	18172.928 #
42)	L9 AR-1268-2	8.660	7.472	9401.4E6	3472.4E6	30135.869	24748.366
43)	L9 AR-1268-3	8.885	7.679	1952.4E6	671.4E6	7265.527m	5594.828
44)	L9 AR-1268-4	9.307	7.966	5831.1E6	2041.1E6	50043.777m	37583.317
45)	L9 AR-1268-5	9.718	8.247	8778.8E6	3131.2E6	10238.405	8944.673
-----							

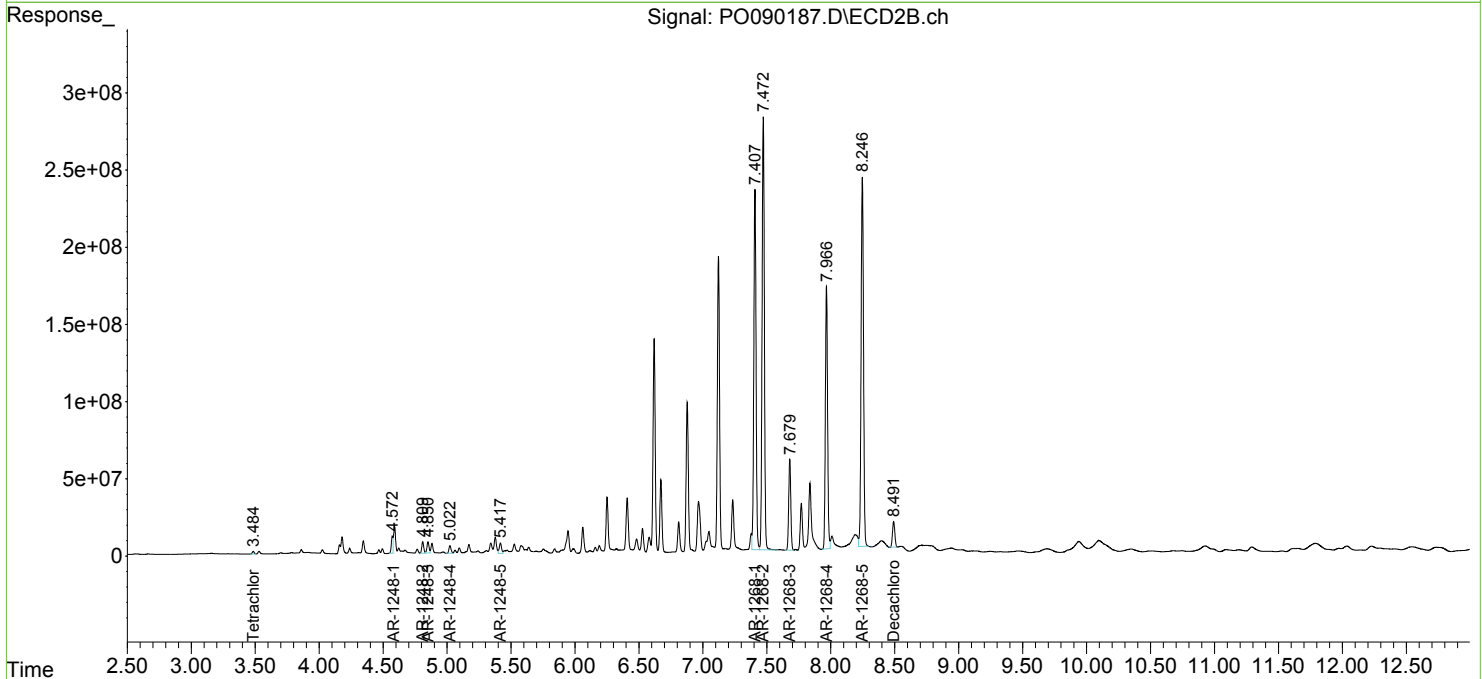
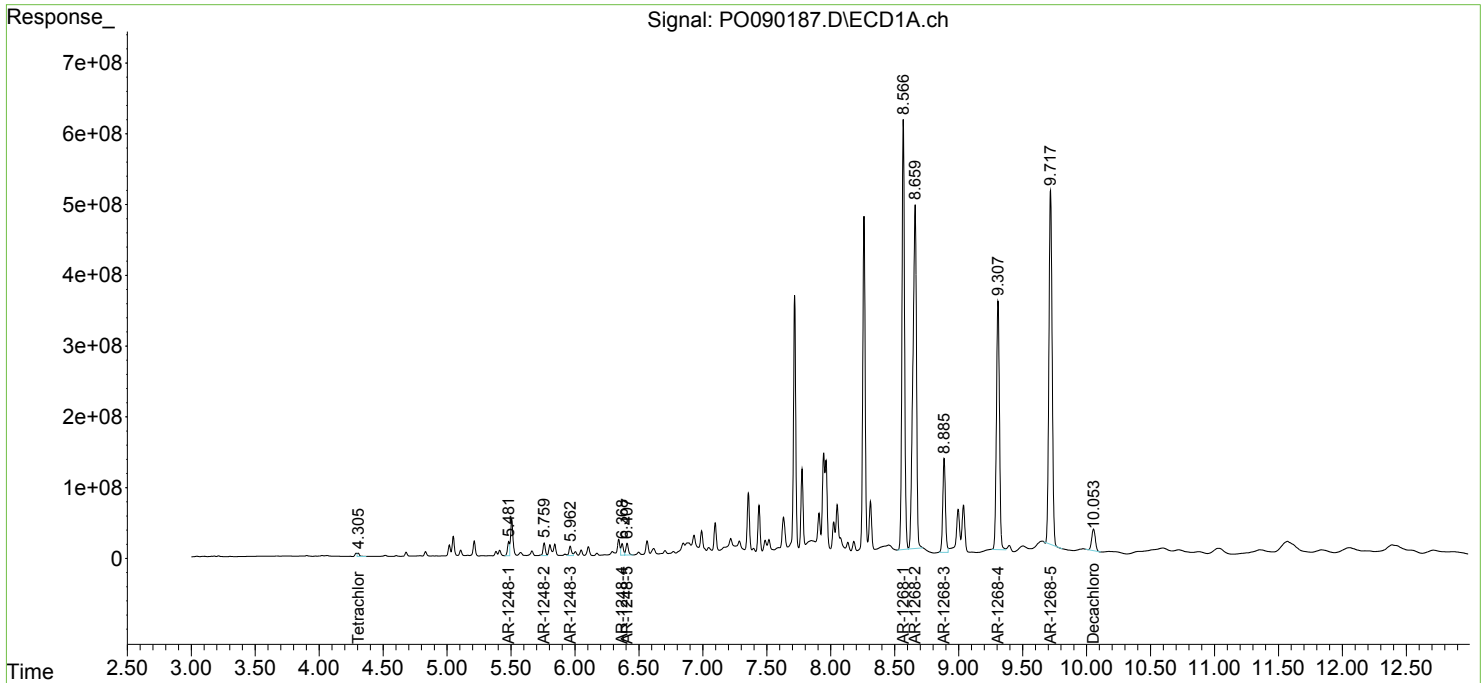
(f)=RT Delta > 1/2 Window (#)=Amounts differ by > 25% (m)=manual int.

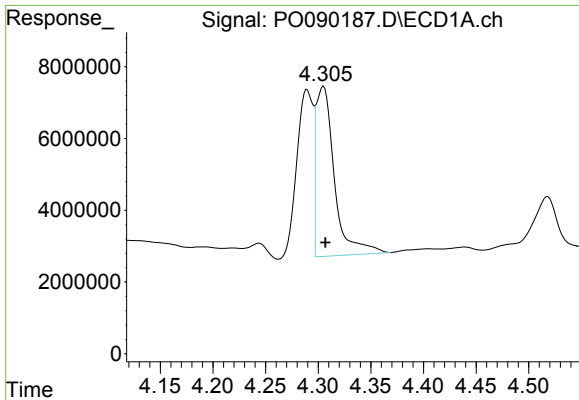
Data Path : Z:\pestpcbsrv\HPCHEM1\ECD\_O\Data\PO110422\  
 Data File : PO090187.D  
 Signal(s) : Signal #1: ECD1A.ch Signal #2: ECD2B.ch  
 Acq On : 04 Nov 2022 17:13  
 Operator : YP/AJ  
 Sample : N5436-02  
 Misc :  
 ALS Vial : 22 Sample Multiplier: 1

Instrument :  
 ECD\_O  
 ClientSampleId :  
 250FERRYBLVD-TFS-02

Integration File signal 1: autoint1.e  
 Integration File signal 2: autoint2.e  
 Quant Time: Nov 05 03:27:18 2022  
 Quant Method : Z:\pestpcbsrv\HPCHEM1\ECD\_O\methods\PO102722.M  
 Quant Title : GC EXTRACTABLES  
 QLast Update : Fri Oct 28 05:05:44 2022  
 Response via : Initial Calibration  
 Integrator: ChemStation

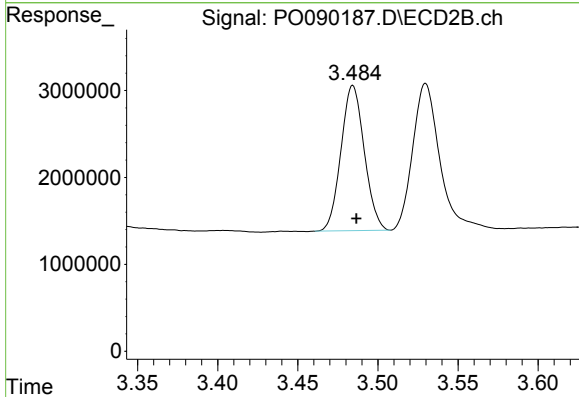
Volume Inj. : 2 µl  
 Signal #1 Phase : ZB-MR1 Signal #2 Phase: ZB-MR2  
 Signal #1 Info : 30Mx0.32mmx 0.50µ Signal #2 Info : 30M x 0.32mm x 0.25µm



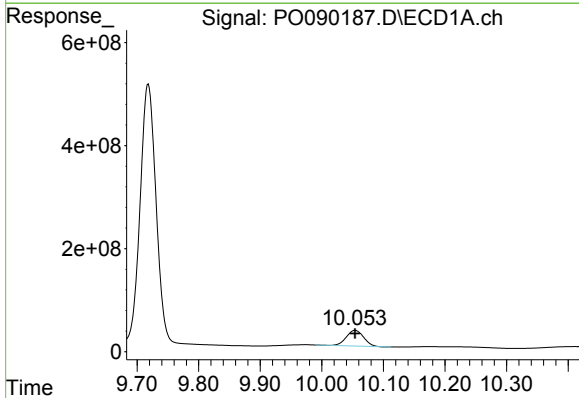


#1 Tetrachloro-m-xylene  
 R.T.: 4.305 min  
 Delta R.T.: -0.002 min  
 Response: 58151626  
 Conc: 18.09 ng/ml

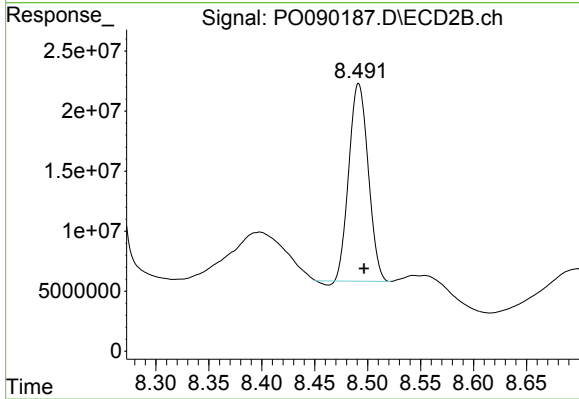
Instrument :  
 ECD\_O  
 ClientSampleId :  
 250FERRYBLVD-TFS-02



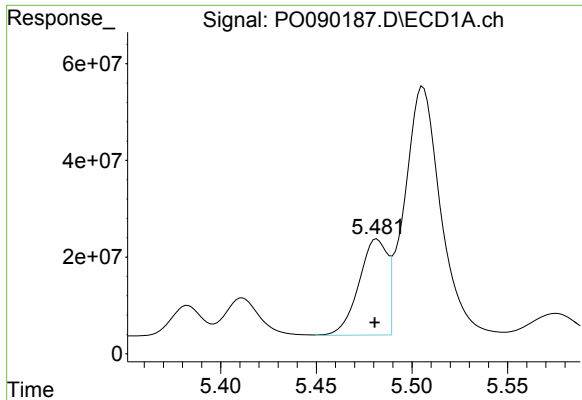
#1 Tetrachloro-m-xylene  
 R.T.: 3.484 min  
 Delta R.T.: -0.002 min  
 Response: 16918796  
 Conc: 15.92 ng/ml



#2 Decachlorobiphenyl  
 R.T.: 10.054 min  
 Delta R.T.: 0.000 min  
 Response: 598101978  
 Conc: 244.07 ng/ml



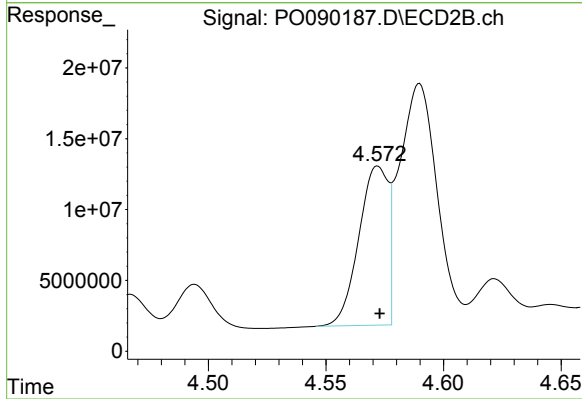
#2 Decachlorobiphenyl  
 R.T.: 8.492 min  
 Delta R.T.: -0.005 min  
 Response: 208571737  
 Conc: 202.51 ng/ml



#21 AR-1248-1

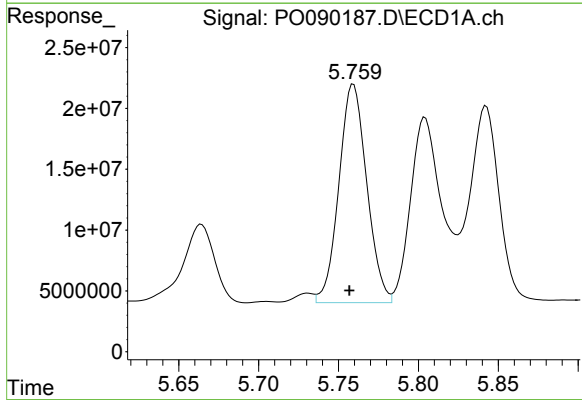
R.T.: 5.482 min  
 Delta R.T.: 0.001 min  
 Response: 205398014  
 Conc: 3247.54 ng/ml

Instrument :  
 ECD\_O  
 ClientSampleId :  
 250FERRYBLVD-TFS-02



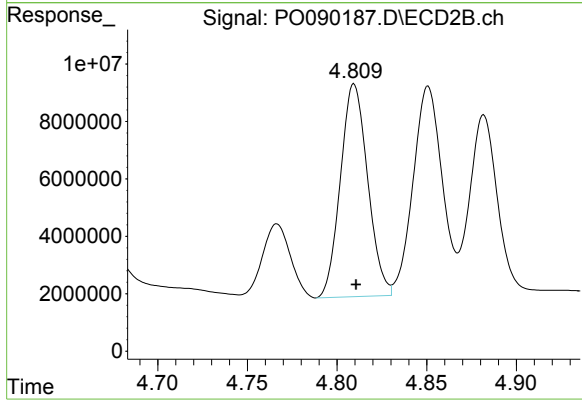
#21 AR-1248-1

R.T.: 4.572 min  
 Delta R.T.: 0.000 min  
 Response: 97254519  
 Conc: 4283.94 ng/ml



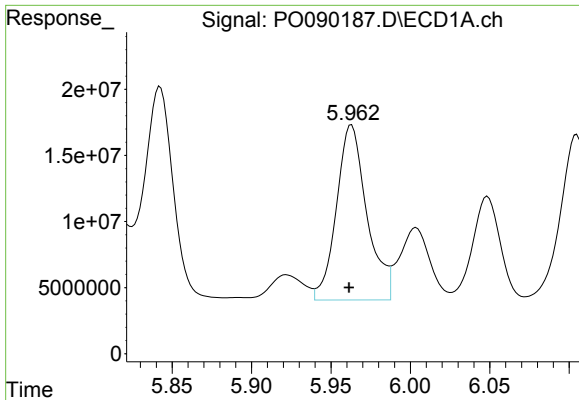
#22 AR-1248-2

R.T.: 5.759 min  
 Delta R.T.: 0.003 min  
 Response: 218119442  
 Conc: 2303.25 ng/ml



#22 AR-1248-2

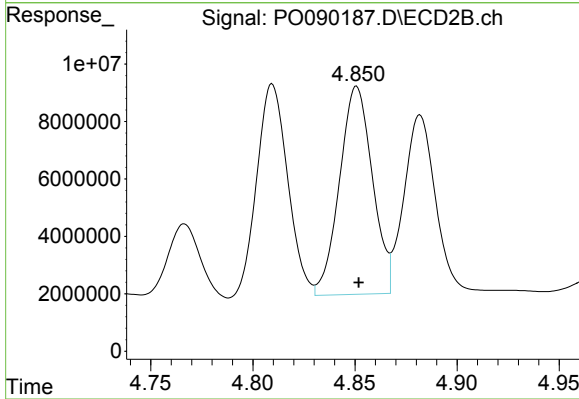
R.T.: 4.809 min  
 Delta R.T.: -0.001 min  
 Response: 78419077  
 Conc: 2412.01 ng/ml



#23 AR-1248-3

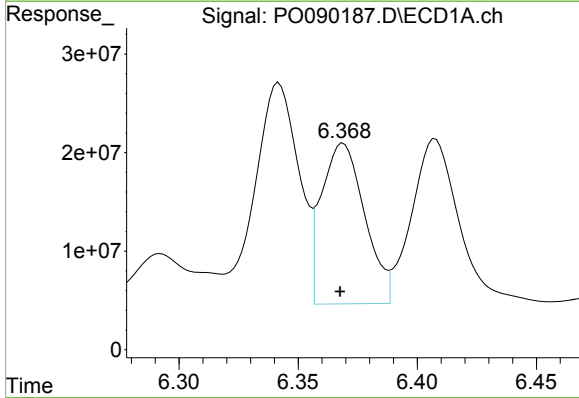
R.T.: 5.963 min  
 Delta R.T.: 0.002 min  
 Response: 176789558  
 Conc: 1793.35 ng/m

Instrument :  
 ECD\_O  
 ClientSampleId :  
 250FERRYBLVD-TFS-02



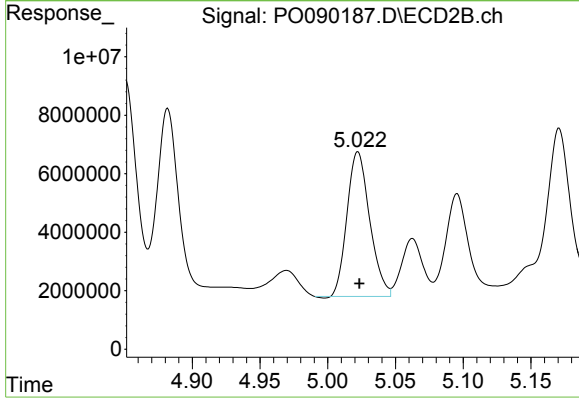
#23 AR-1248-3

R.T.: 4.851 min  
 Delta R.T.: -0.001 min  
 Response: 81344482  
 Conc: 2413.21 ng/ml



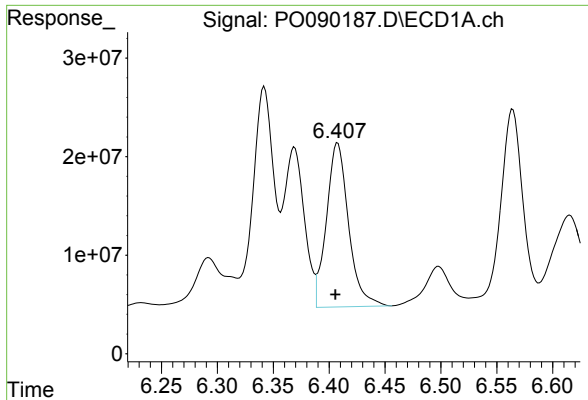
#24 AR-1248-4

R.T.: 6.369 min  
 Delta R.T.: 0.001 min  
 Response: 205624835  
 Conc: 1928.59 ng/ml



#24 AR-1248-4

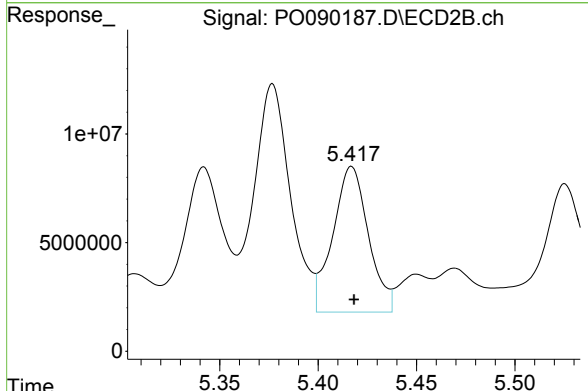
R.T.: 5.022 min  
 Delta R.T.: -0.001 min  
 Response: 57563569  
 Conc: 1488.46 ng/ml



#25 AR-1248-5

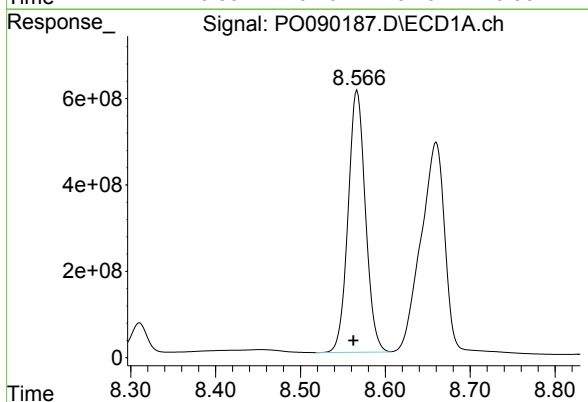
R.T.: 6.408 min  
 Delta R.T.: 0.002 min  
 Response: 229594467  
 Conc: 2185.65 ng/ml

Instrument :  
 ECD\_O  
 ClientSampleId :  
 250FERRYBLVD-TFS-02



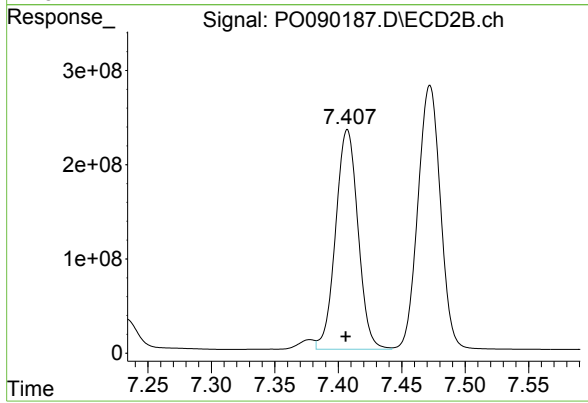
#25 AR-1248-5

R.T.: 5.417 min  
 Delta R.T.: -0.001 min  
 Response: 84395631  
 Conc: 2330.82 ng/ml



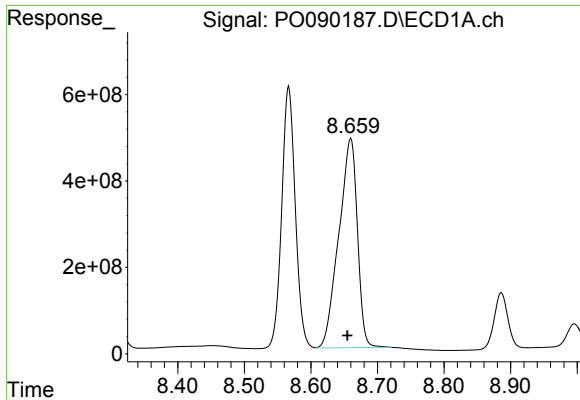
#41 AR-1268-1

R.T.: 8.567 min  
 Delta R.T.: 0.004 min  
 Response: 8613273344  
 Conc: 24705.46 ng/ml



#41 AR-1268-1

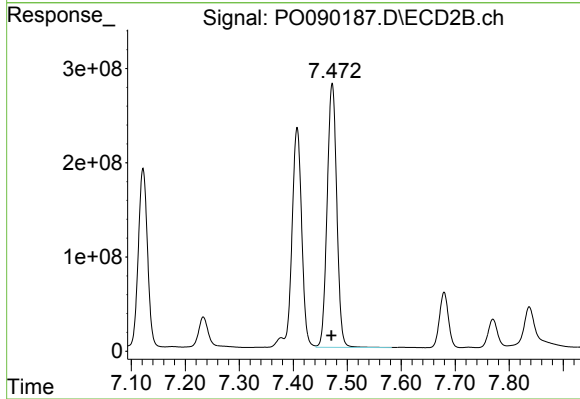
R.T.: 7.407 min  
 Delta R.T.: 0.001 min  
 Response: 2863164465  
 Conc: 18172.93 ng/ml



#42 AR-1268-2

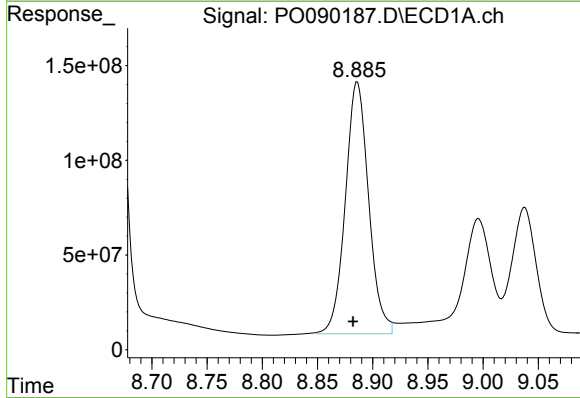
R.T.: 8.660 min  
 Delta R.T.: 0.005 min  
 Response: 9401385918  
 Conc: 30135.87 ng/ml

Instrument :  
 ECD\_O  
 ClientSampleId :  
 250FERRYBLVD-TFS-02



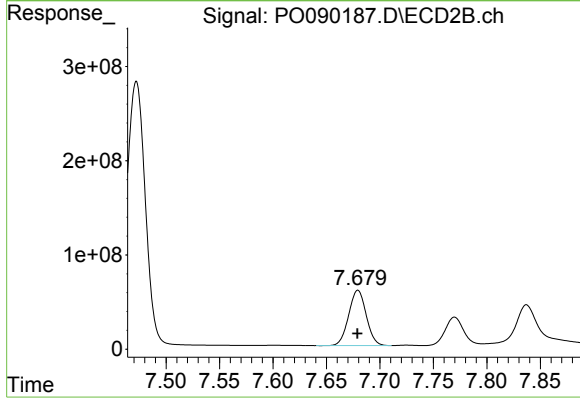
#42 AR-1268-2

R.T.: 7.472 min  
 Delta R.T.: 0.002 min  
 Response: 3472366428  
 Conc: 24748.37 ng/ml



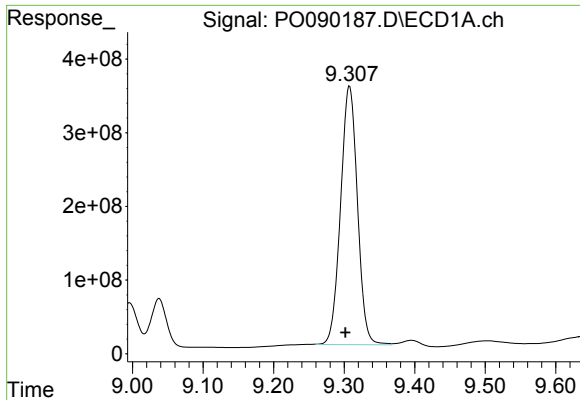
#43 AR-1268-3

R.T.: 8.885 min  
 Delta R.T.: 0.003 min  
 Response: 1952441684  
 Conc: 7265.53 ng/ml m



#43 AR-1268-3

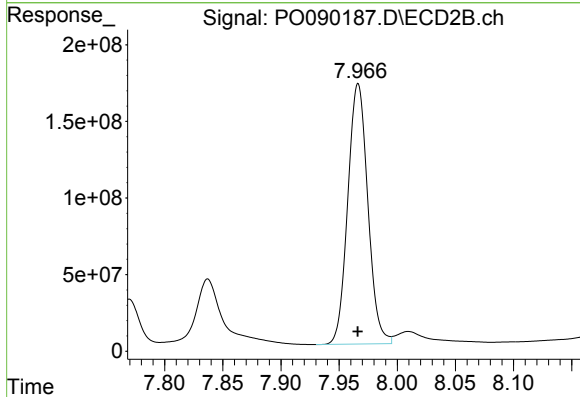
R.T.: 7.679 min  
 Delta R.T.: 0.000 min  
 Response: 671421225  
 Conc: 5594.83 ng/ml



#44 AR-1268-4

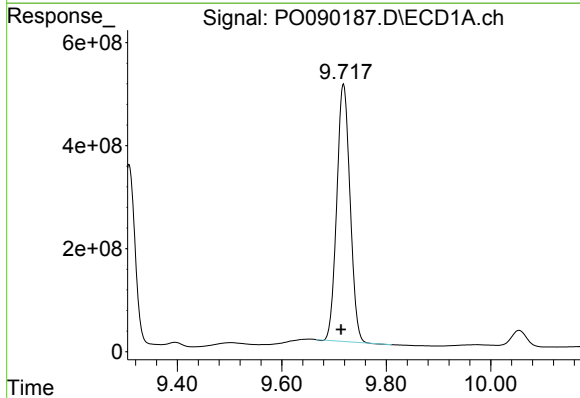
R.T.: 9.307 min  
 Delta R.T.: 0.005 min  
 Response: 5831130861  
 Conc: 50043.78 ng/ml

Instrument :  
 ECD\_O  
 ClientSampleId :  
 250FERRYBLVD-TFS-02



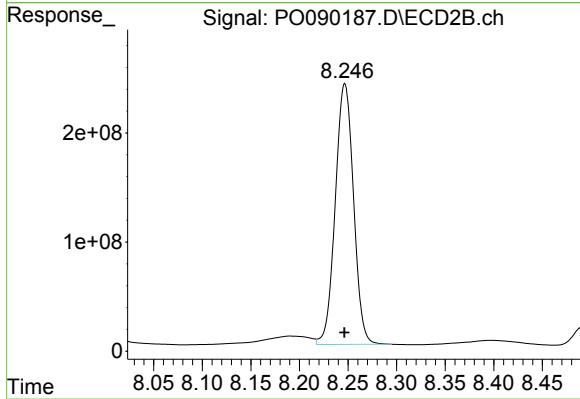
#44 AR-1268-4

R.T.: 7.966 min  
 Delta R.T.: 0.000 min  
 Response: 2041140369  
 Conc: 37583.32 ng/ml



#45 AR-1268-5

R.T.: 9.718 min  
 Delta R.T.: 0.004 min  
 Response: 8778782020  
 Conc: 10238.40 ng/ml



#45 AR-1268-5

R.T.: 8.247 min  
 Delta R.T.: 0.000 min  
 Response: 3131229379  
 Conc: 8944.67 ng/ml