

Data Path : Z:\pestpcbsrv\HPCHEM1\ECD_0\Data\PO110422\
 Data File : PO090189.D
 Signal(s) : Signal #1: ECD1A.ch Signal #2: ECD2B.ch
 Acq On : 04 Nov 2022 17:47
 Operator : YP/AJ
 Sample : N5436-04
 Misc :
 ALS Vial : 24 Sample Multiplier: 1

Instrument :
 ECD_0
 ClientSampleId :
 250FERRYBLVD-TFS-04

Integration File signal 1: autoint1.e
 Integration File signal 2: autoint2.e
 Quant Time: Nov 05 03:29:10 2022
 Quant Method : Z:\pestpcbsrv\HPCHEM1\ECD_0\methods\PO102722.M
 Quant Title : GC EXTRACTABLES
 QLast Update : Fri Oct 28 05:05:44 2022
 Response via : Initial Calibration
 Integrator: ChemStation

Volume Inj. : 2 µl
 Signal #1 Phase : ZB-MR2 Signal #2 Phase: ZB-MR2
 Signal #1 Info : 30Mx0.32mmx 0.50µ Signal #2 Info : 30M x 0.32mm x 0.25µm

Compound	RT#1	RT#2	Resp#1	Resp#2	ng/ml	ng/ml

System Monitoring Compounds						
1) SA Tetrachlo...	4.303	3.484	48379130	15248966	15.053	14.348
2) SA Decachlor...	10.051	8.490	510.2E6	221.6E6	208.210	215.153
Target Compounds						
21) L5 AR-1248-1	5.480	4.570	236.7E6	117.1E6	3742.422	5160.225 #
22) L5 AR-1248-2	5.757	4.808	321.9E6	113.3E6	3399.299	3486.371
23) L5 AR-1248-3	5.961	4.850	275.5E6	123.4E6	2794.903	3661.020 #
24) L5 AR-1248-4	6.367	5.021	312.2E6	103.0E6	2928.035	2663.918
25) L5 AR-1248-5	6.406	5.416	330.5E6	120.5E6	3146.603	3327.997
41) L9 AR-1268-1	8.564	7.405	7845.0E6	2720.5E6	22501.741	17267.511
42) L9 AR-1268-2	8.656	7.470	8518.3E6	3339.1E6	27305.175	23798.707
43) L9 AR-1268-3	8.883	7.677	1630.3E6	635.2E6	6066.604	5292.773
44) L9 AR-1268-4	9.304	7.965	5246.2E6	1915.9E6	45023.569	35278.174
45) L9 AR-1268-5	9.714	8.245	8056.4E6	2895.9E6	9395.939	8272.405

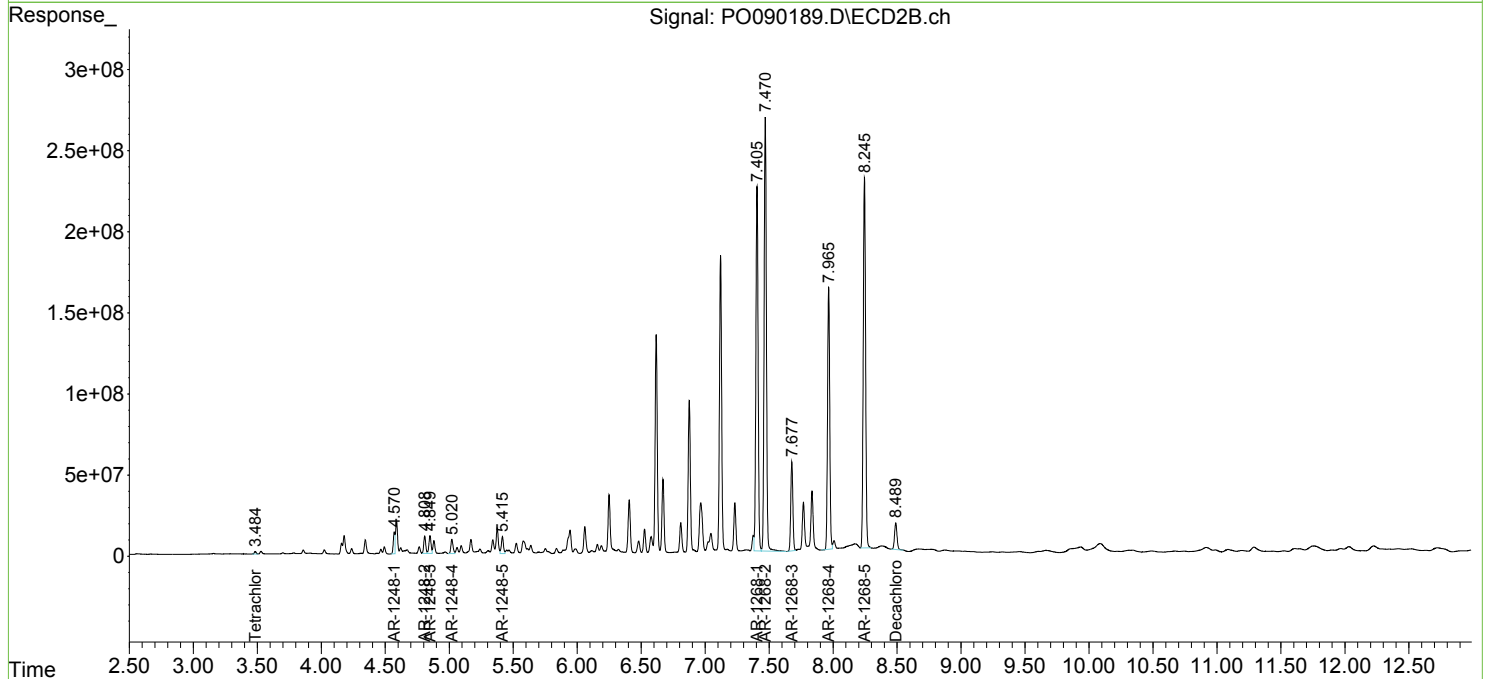
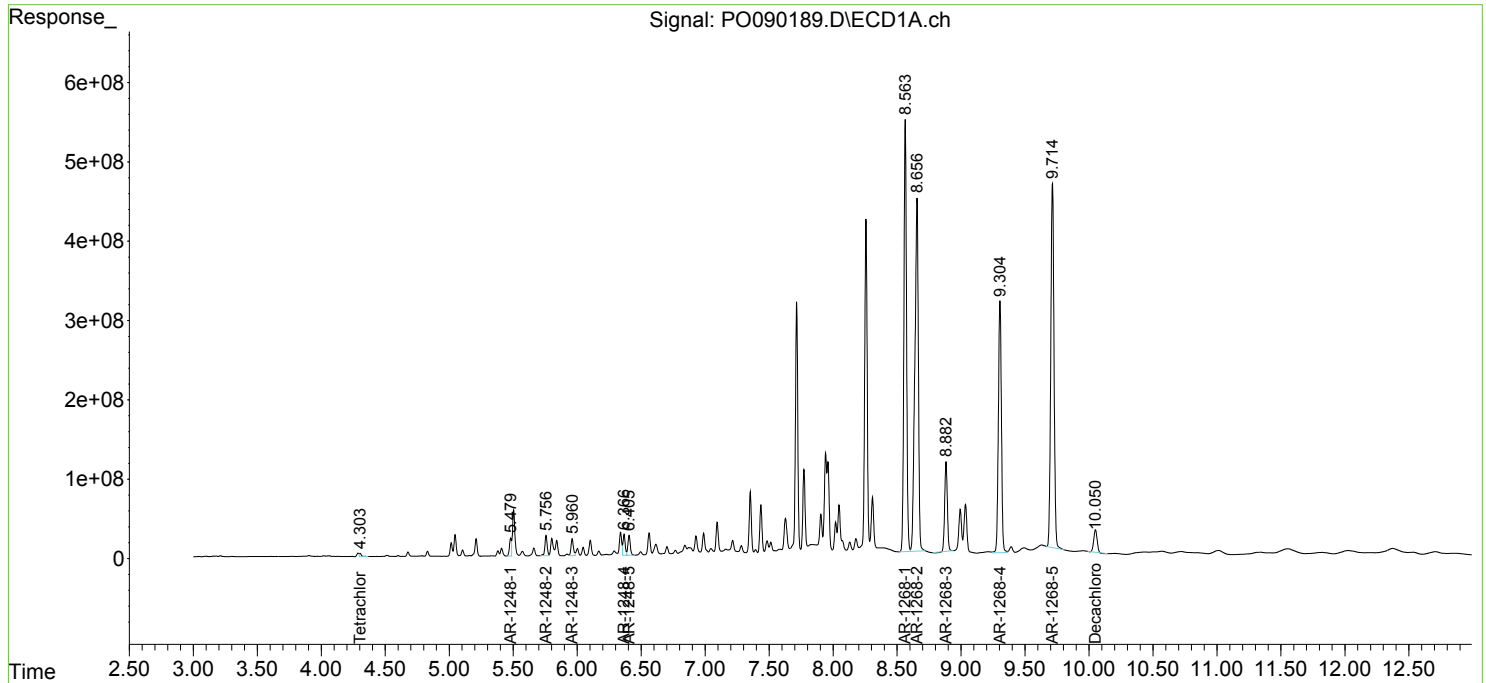
(f)=RT Delta > 1/2 Window (#)=Amounts differ by > 25% (m)=manual int.

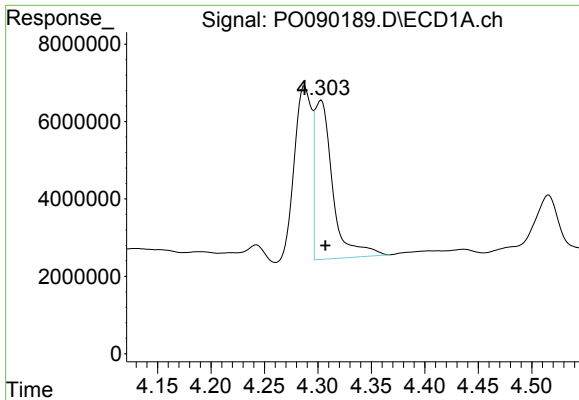
Data Path : Z:\pestpcbsrv\HPCHEM1\ECD_O\Data\PO110422\
 Data File : PO090189.D
 Signal(s) : Signal #1: ECD1A.ch Signal #2: ECD2B.ch
 Acq On : 04 Nov 2022 17:47
 Operator : YP/AJ
 Sample : N5436-04
 Misc :
 ALS Vial : 24 Sample Multiplier: 1

Instrument :
 ECD_O
ClientSampleId :
 250FERRYBLVD-TFS-04

Integration File signal 1: autoint1.e
 Integration File signal 2: autoint2.e
 Quant Time: Nov 05 03:29:10 2022
 Quant Method : Z:\pestpcbsrv\HPCHEM1\ECD_O\methods\PO102722.M
 Quant Title : GC EXTRACTABLES
 QLast Update : Fri Oct 28 05:05:44 2022
 Response via : Initial Calibration
 Integrator: ChemStation

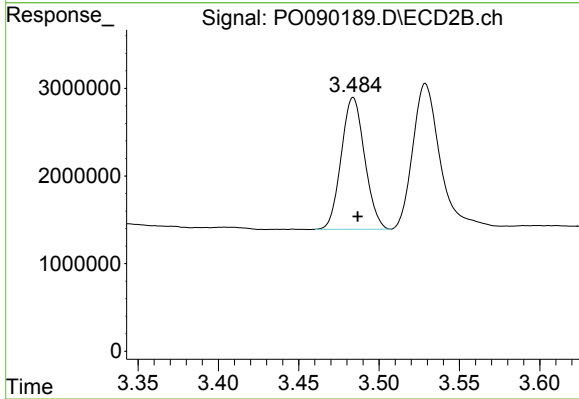
Volume Inj. : 2 µl
 Signal #1 Phase : ZB-MR1 Signal #2 Phase: ZB-MR2
 Signal #1 Info : 30Mx0.32mmx 0.50µ Signal #2 Info : 30M x 0.32mm x 0.25µm



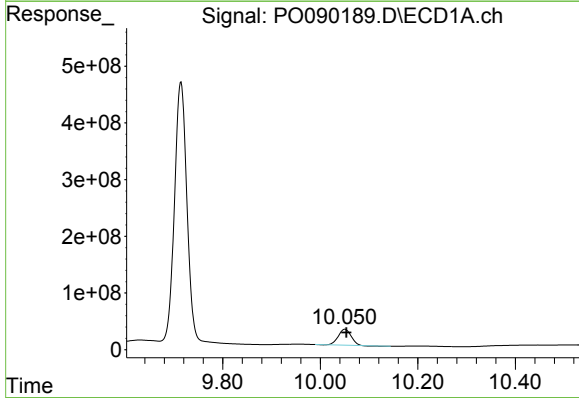


#1 Tetrachloro-m-xylene
 R.T.: 4.303 min
 Delta R.T.: -0.004 min
 Response: 48379130
 Conc: 15.05 ng/ml

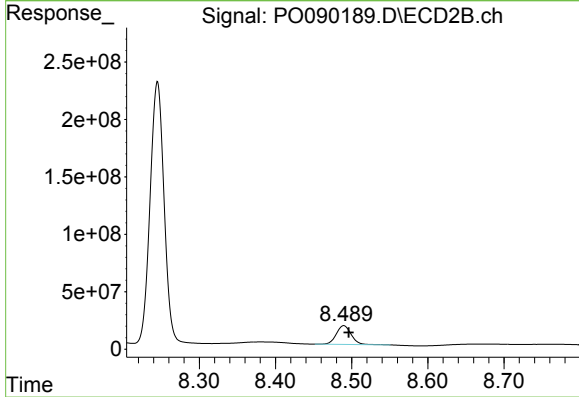
Instrument :
 ECD_O
 ClientSampleId :
 250FERRYBLVD-TFS-04



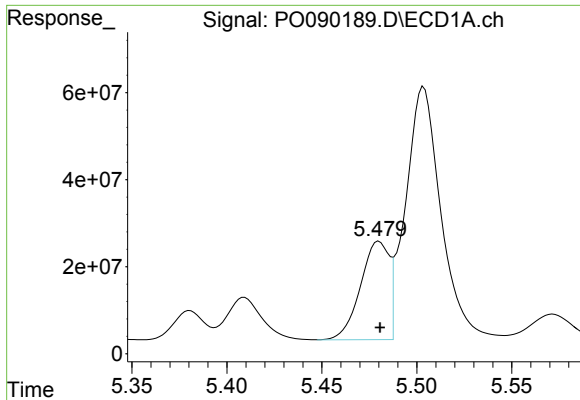
#1 Tetrachloro-m-xylene
 R.T.: 3.484 min
 Delta R.T.: -0.003 min
 Response: 15248966
 Conc: 14.35 ng/ml



#2 Decachlorobiphenyl
 R.T.: 10.051 min
 Delta R.T.: -0.003 min
 Response: 510231318
 Conc: 208.21 ng/ml



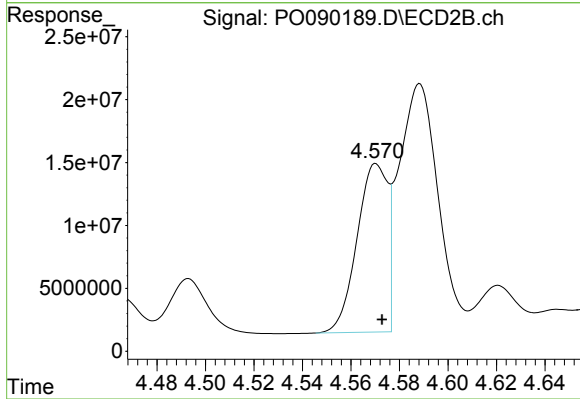
#2 Decachlorobiphenyl
 R.T.: 8.490 min
 Delta R.T.: -0.007 min
 Response: 221592502
 Conc: 215.15 ng/ml



#21 AR-1248-1

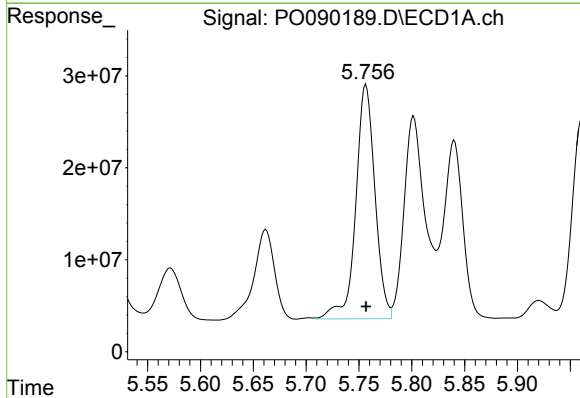
R.T.: 5.480 min
 Delta R.T.: 0.000 min
 Response: 236698126
 Conc: 3742.42 ng/ml

Instrument :
 ECD_O
 ClientSampleId :
 250FERRYBLVD-TFS-04



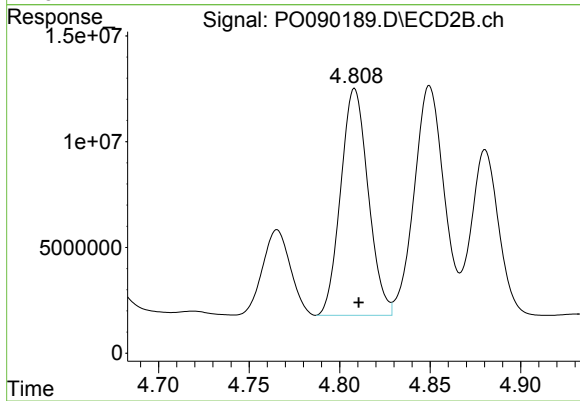
#21 AR-1248-1

R.T.: 4.570 min
 Delta R.T.: -0.003 min
 Response: 117148075
 Conc: 5160.23 ng/ml



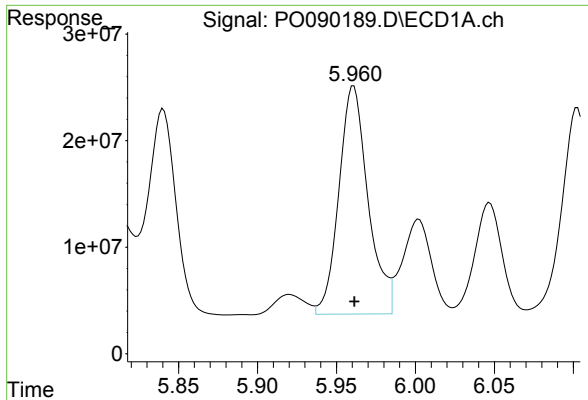
#22 AR-1248-2

R.T.: 5.757 min
 Delta R.T.: 0.000 min
 Response: 321916143
 Conc: 3399.30 ng/ml



#22 AR-1248-2

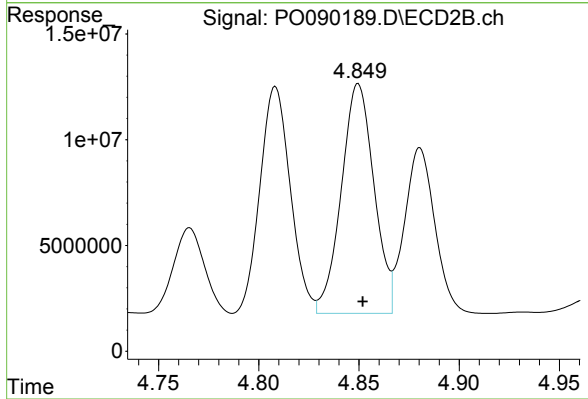
R.T.: 4.808 min
 Delta R.T.: -0.002 min
 Response: 113348463
 Conc: 3486.37 ng/ml



#23 AR-1248-3

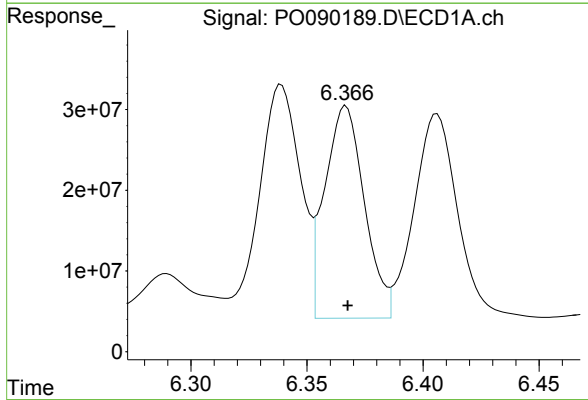
R.T.: 5.961 min
 Delta R.T.: 0.000 min
 Response: 275523268
 Conc: 2794.90 ng/ml

Instrument :
 ECD_O
 ClientSampleId :
 250FERRYBLVD-TFS-04



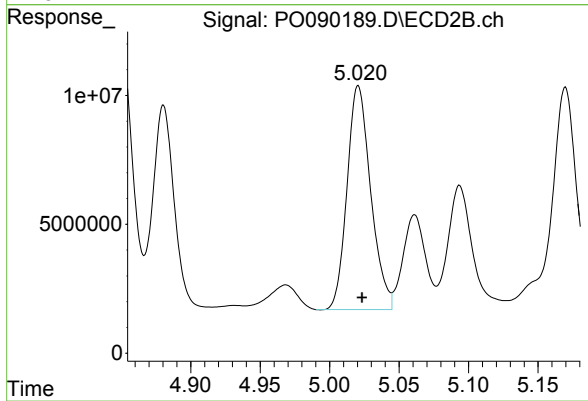
#23 AR-1248-3

R.T.: 4.850 min
 Delta R.T.: -0.002 min
 Response: 123405805
 Conc: 3661.02 ng/ml



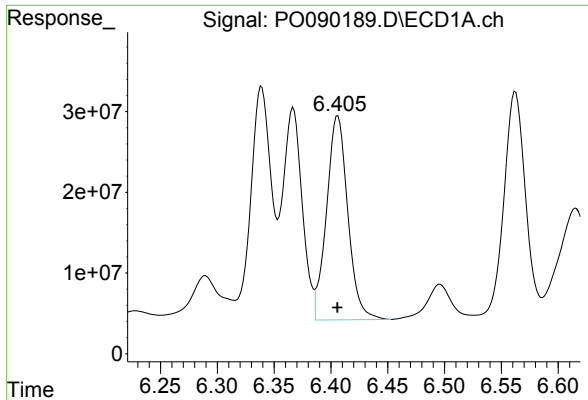
#24 AR-1248-4

R.T.: 6.367 min
 Delta R.T.: 0.000 min
 Response: 312184199
 Conc: 2928.04 ng/ml



#24 AR-1248-4

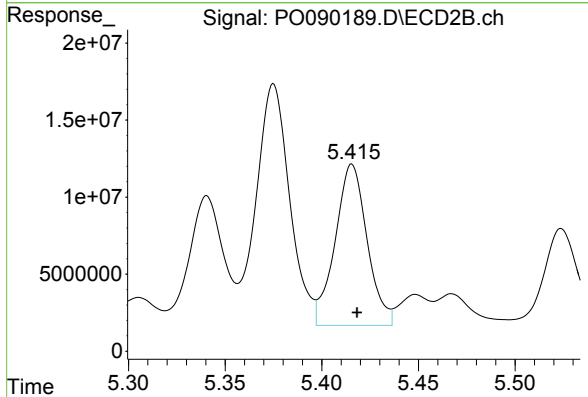
R.T.: 5.021 min
 Delta R.T.: -0.003 min
 Response: 103022361
 Conc: 2663.92 ng/ml



#25 AR-1248-5

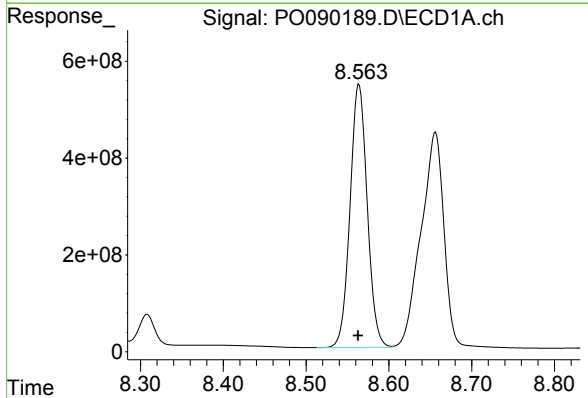
R.T.: 6.406 min
 Delta R.T.: 0.000 min
 Response: 330538691
 Conc: 3146.60 ng/ml

Instrument :
 ECD_O
 ClientSampleId :
 250FERRYBLVD-TFS-04



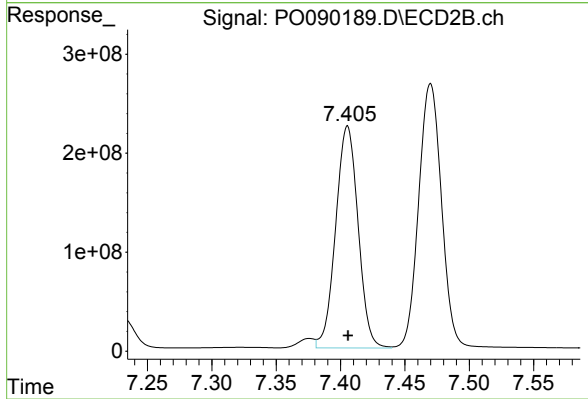
#25 AR-1248-5

R.T.: 5.416 min
 Delta R.T.: -0.003 min
 Response: 120502084
 Conc: 3328.00 ng/ml



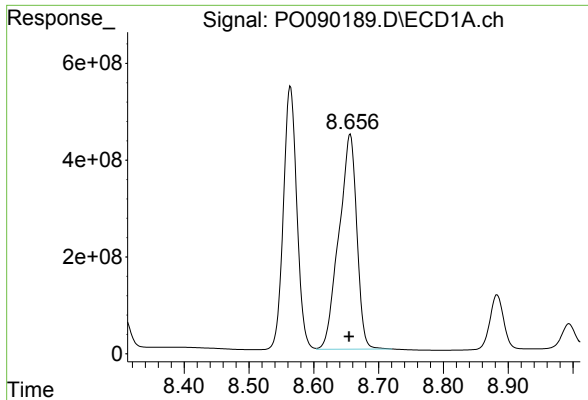
#41 AR-1268-1

R.T.: 8.564 min
 Delta R.T.: 0.001 min
 Response: 7844971588
 Conc: 22501.74 ng/ml



#41 AR-1268-1

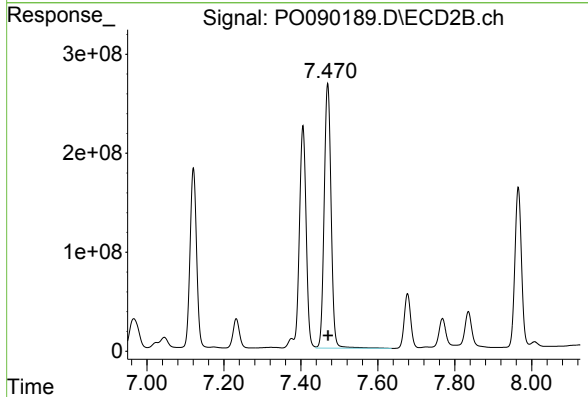
R.T.: 7.405 min
 Delta R.T.: 0.000 min
 Response: 2720515010
 Conc: 17267.51 ng/ml



#42 AR-1268-2

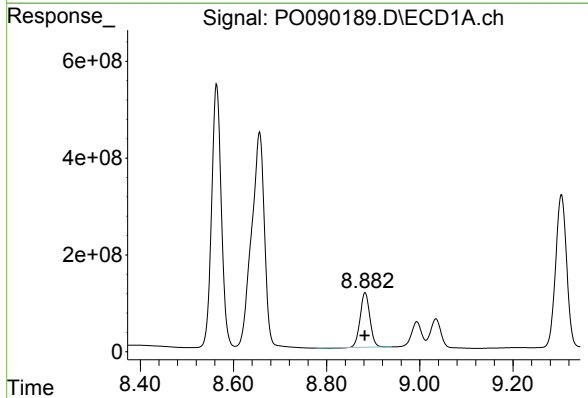
R.T.: 8.656 min
 Delta R.T.: 0.001 min
 Response: 8518303642
 Conc: 27305.17 ng/ml

Instrument :
 ECD_O
 ClientSampleId :
 250FERRYBLVD-TFS-04



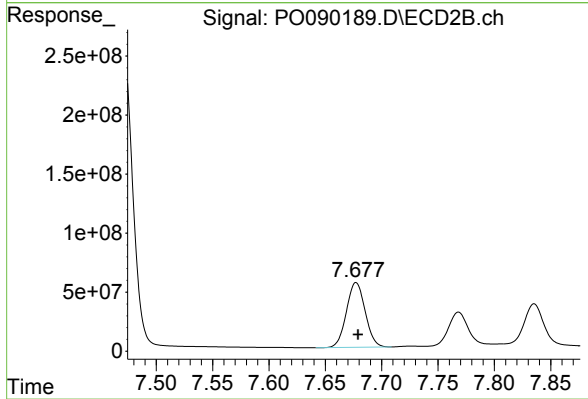
#42 AR-1268-2

R.T.: 7.470 min
 Delta R.T.: 0.000 min
 Response: 3339122718
 Conc: 23798.71 ng/ml



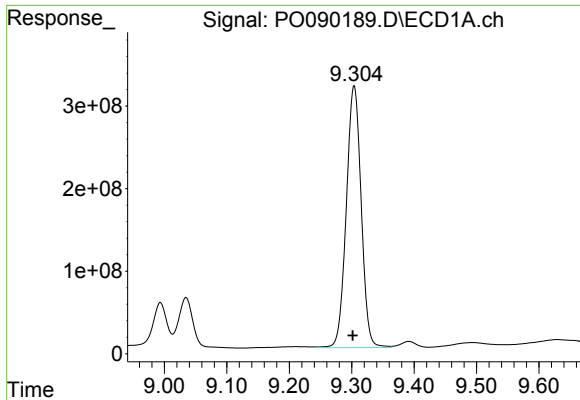
#43 AR-1268-3

R.T.: 8.883 min
 Delta R.T.: 0.000 min
 Response: 1630258950
 Conc: 6066.60 ng/ml



#43 AR-1268-3

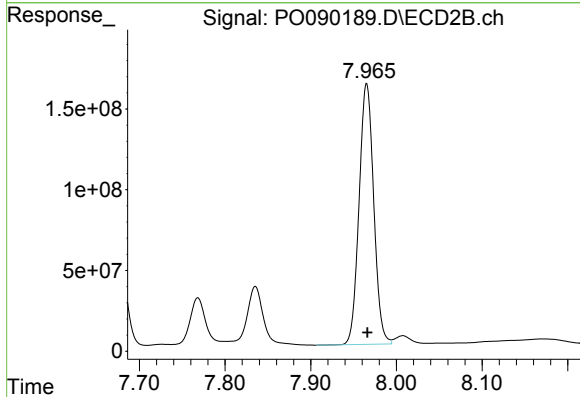
R.T.: 7.677 min
 Delta R.T.: -0.002 min
 Response: 635172469
 Conc: 5292.77 ng/ml



#44 AR-1268-4

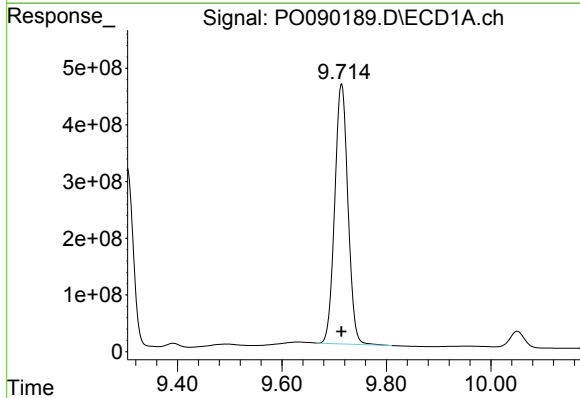
R.T.: 9.304 min
 Delta R.T.: 0.003 min
 Response: 5246173245
 Conc: 45023.57 ng/ml

Instrument :
 ECD_O
 ClientSampleId :
 250FERRYBLVD-TFS-04



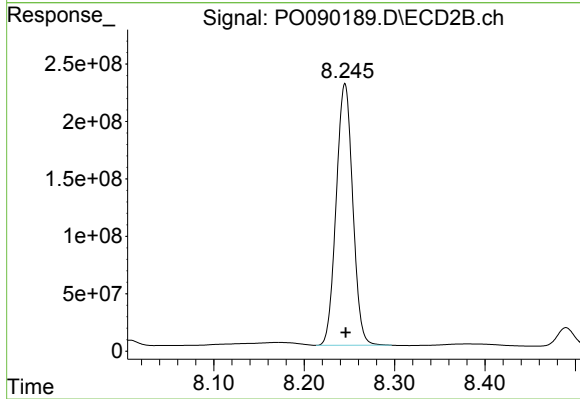
#44 AR-1268-4

R.T.: 7.965 min
 Delta R.T.: 0.000 min
 Response: 1915948625
 Conc: 35278.17 ng/ml



#45 AR-1268-5

R.T.: 9.714 min
 Delta R.T.: 0.000 min
 Response: 8056421071
 Conc: 9395.94 ng/ml



#45 AR-1268-5

R.T.: 8.245 min
 Delta R.T.: -0.001 min
 Response: 2895890874
 Conc: 8272.41 ng/ml