

Data Path : Z:\pestpcbsrv\HPCHEM1\ECD\_0\Data\PO110422\  
 Data File : PO090220.D  
 Signal(s) : Signal #1: ECD1A.ch Signal #2: ECD2B.ch  
 Acq On : 05 Nov 2022 04:45  
 Operator : YP/AJ  
 Sample : AR1248CCC500  
 Misc :  
 ALS Vial : 5 Sample Multiplier: 1

Instrument :  
 ECD\_0  
 ClientSampleId :  
 AR1248CCC500

Integration File signal 1: autoint1.e  
 Integration File signal 2: autoint2.e  
 Quant Time: Nov 05 07:49:25 2022  
 Quant Method : Z:\pestpcbsrv\HPCHEM1\ECD\_0\methods\PO102722.M  
 Quant Title : GC EXTRACTABLES  
 QLast Update : Fri Oct 28 05:05:44 2022  
 Response via : Initial Calibration  
 Integrator: ChemStation

Volume Inj. : 2 µl  
 Signal #1 Phase : ZB-MR2 Signal #2 Phase: ZB-MR2  
 Signal #1 Info : 30Mx0.32mmx 0.50µ Signal #2 Info : 30M x 0.32mm x 0.25µm

Compound	RT#1	RT#2	Resp#1	Resp#2	ng/ml	ng/ml
-----						
System Monitoring Compounds						
1) SA Tetrachlo...	4.304	3.483	174.5E6	60311784	54.294	56.748
2) SA Decachlor...	10.050	8.488	128.8E6	54393743	52.557	52.813
Target Compounds						
21) L5 AR-1248-1	5.479	4.569	34363602	12738637	543.321	561.121
22) L5 AR-1248-2	5.755	4.807	48078564	17255051	507.689	530.731
23) L5 AR-1248-3	5.959	4.849	54565941	18539486	553.516	550.002
24) L5 AR-1248-4	6.366	5.020	57165008	21116483	536.162	546.023
25) L5 AR-1248-5	6.405	5.415	56393411	20470519	536.844	565.350
-----						

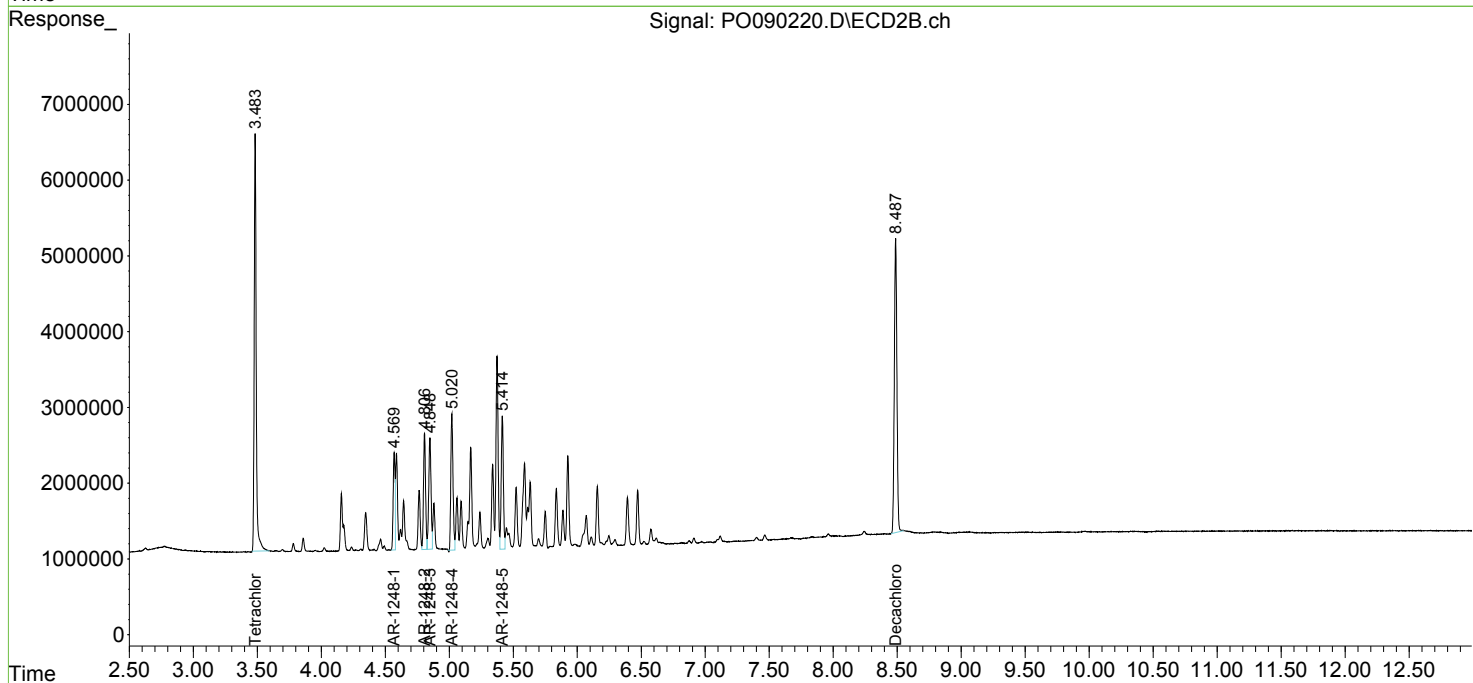
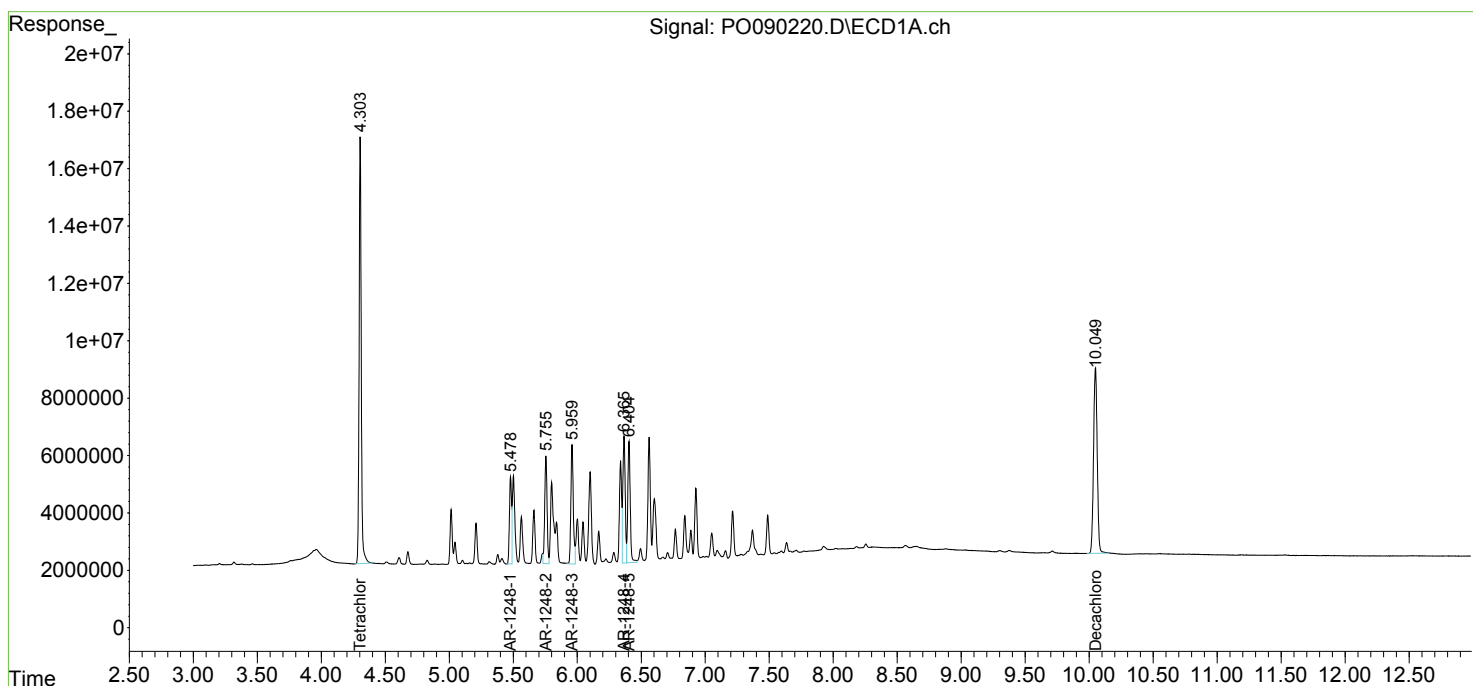
(f)=RT Delta > 1/2 Window (#)=Amounts differ by > 25% (m)=manual int.

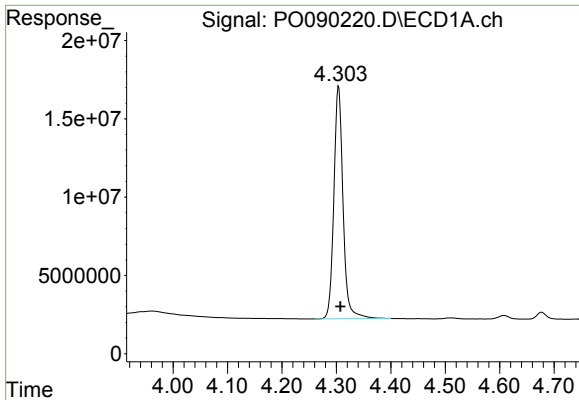
Data Path : Z:\pestpcbsrv\HPCHEM1\ECD\_O\Data\PO110422\  
 Data File : PO090220.D  
 Signal(s) : Signal #1: ECD1A.ch Signal #2: ECD2B.ch  
 Acq On : 05 Nov 2022 04:45  
 Operator : YP/AJ  
 Sample : AR1248CCC500  
 Misc :  
 ALS Vial : 5 Sample Multiplier: 1

Instrument :  
 ECD\_O  
 ClientSampleId :  
 AR1248CCC500

Integration File signal 1: autoint1.e  
 Integration File signal 2: autoint2.e  
 Quant Time: Nov 05 07:49:25 2022  
 Quant Method : Z:\pestpcbsrv\HPCHEM1\ECD\_O\methods\PO102722.M  
 Quant Title : GC EXTRACTABLES  
 QLast Update : Fri Oct 28 05:05:44 2022  
 Response via : Initial Calibration  
 Integrator: ChemStation

Volume Inj. : 2 µl  
 Signal #1 Phase : ZB-MR1 Signal #2 Phase: ZB-MR2  
 Signal #1 Info : 30Mx0.32mmx 0.50µ Signal #2 Info : 30M x 0.32mm x 0.25µm

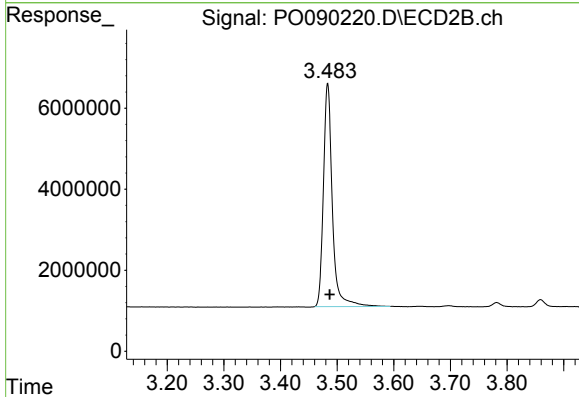




#1 Tetrachloro-m-xylene

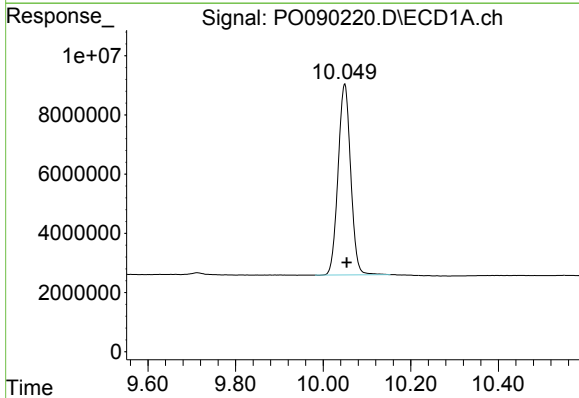
R.T.: 4.304 min  
 Delta R.T.: -0.003 min  
 Response: 174496689  
 Conc: 54.29 ng/ml

Instrument :  
 ECD\_O  
 ClientSampleId :  
 AR1248CCC500



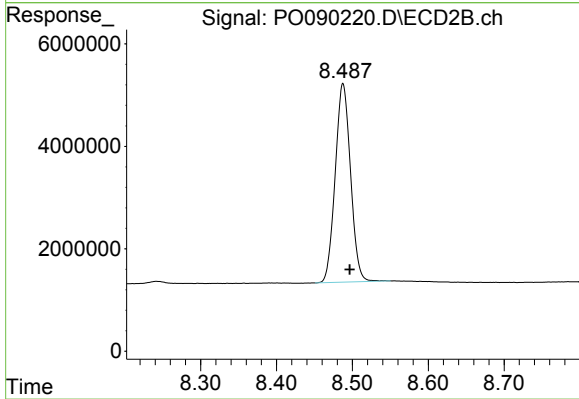
#1 Tetrachloro-m-xylene

R.T.: 3.483 min  
 Delta R.T.: -0.003 min  
 Response: 60311784  
 Conc: 56.75 ng/ml



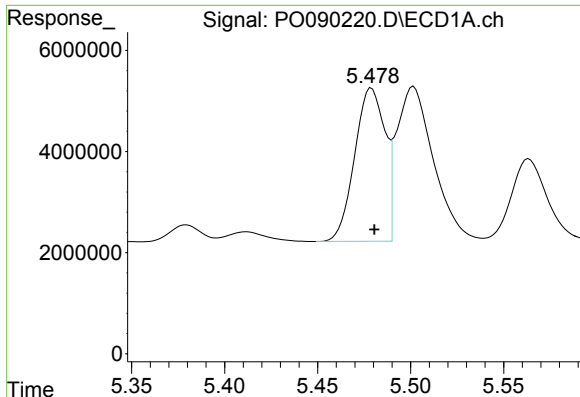
#2 Decachlorobiphenyl

R.T.: 10.050 min  
 Delta R.T.: -0.004 min  
 Response: 128793942  
 Conc: 52.56 ng/ml



#2 Decachlorobiphenyl

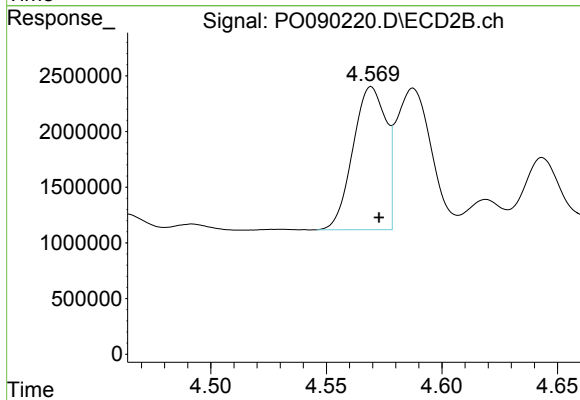
R.T.: 8.488 min  
 Delta R.T.: -0.009 min  
 Response: 54393743  
 Conc: 52.81 ng/ml



#21 AR-1248-1

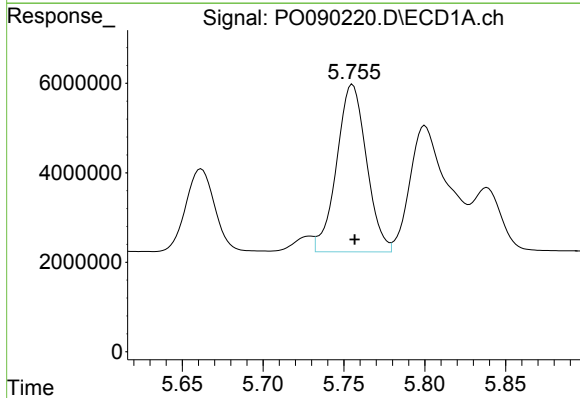
R.T.: 5.479 min  
 Delta R.T.: -0.002 min  
 Response: 34363602  
 Conc: 543.32 ng/ml

Instrument :  
 ECD\_O  
 ClientSampleId :  
 AR1248CCC500



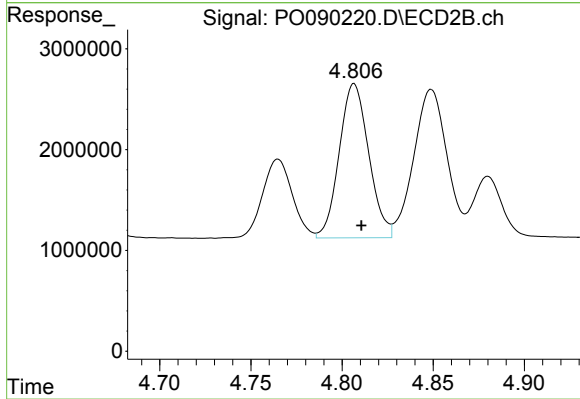
#21 AR-1248-1

R.T.: 4.569 min  
 Delta R.T.: -0.003 min  
 Response: 12738637  
 Conc: 561.12 ng/ml



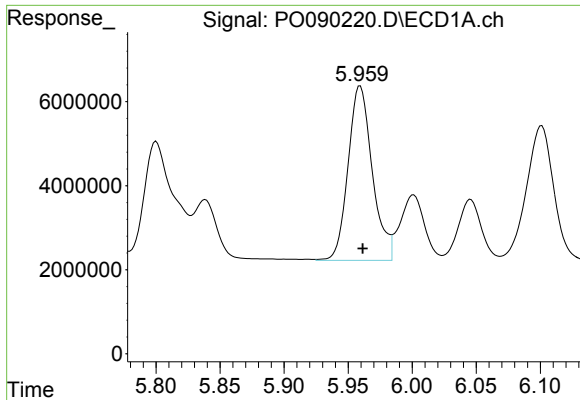
#22 AR-1248-2

R.T.: 5.755 min  
 Delta R.T.: -0.001 min  
 Response: 48078564  
 Conc: 507.69 ng/ml



#22 AR-1248-2

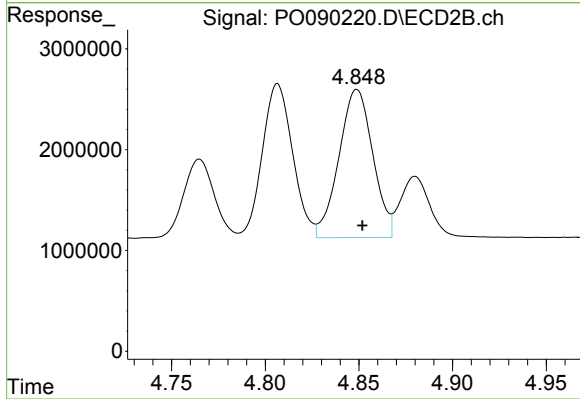
R.T.: 4.807 min  
 Delta R.T.: -0.004 min  
 Response: 17255051  
 Conc: 530.73 ng/ml



#23 AR-1248-3

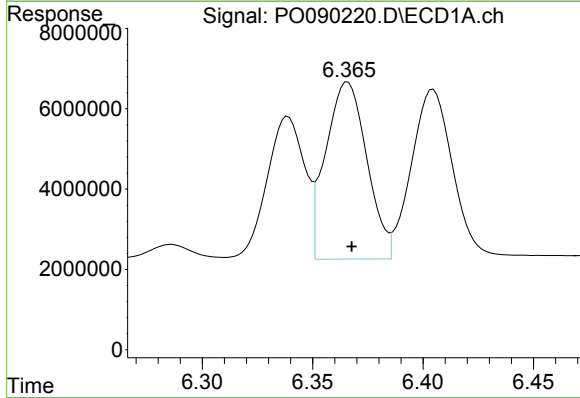
R.T.: 5.959 min  
 Delta R.T.: -0.002 min  
 Response: 54565941  
 Conc: 553.52 ng/ml

Instrument :  
 ECD\_O  
 ClientSampleId :  
 AR1248CCC500



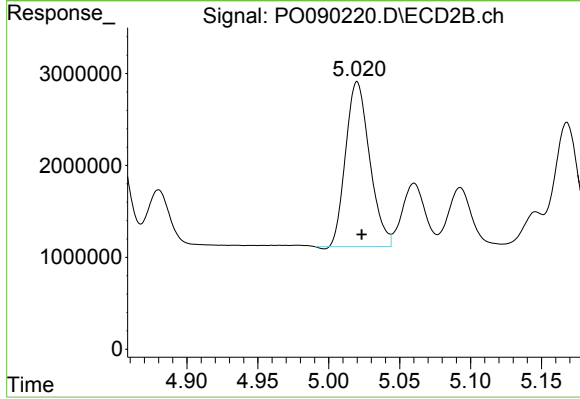
#23 AR-1248-3

R.T.: 4.849 min  
 Delta R.T.: -0.003 min  
 Response: 18539486  
 Conc: 550.00 ng/ml



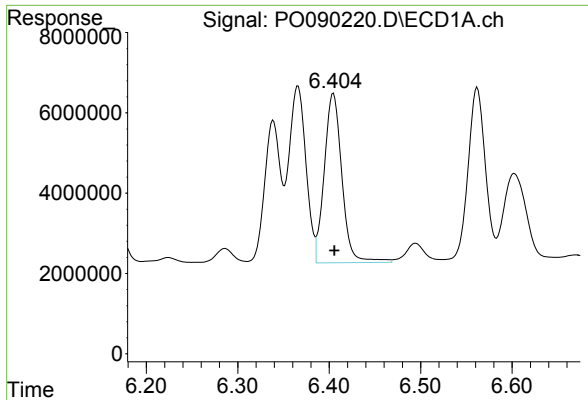
#24 AR-1248-4

R.T.: 6.366 min  
 Delta R.T.: -0.002 min  
 Response: 57165008  
 Conc: 536.16 ng/ml



#24 AR-1248-4

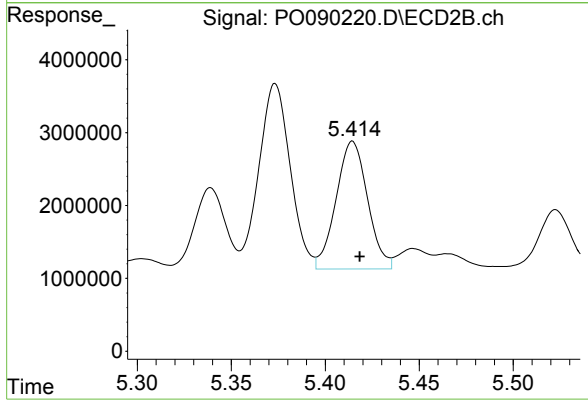
R.T.: 5.020 min  
 Delta R.T.: -0.003 min  
 Response: 21116483  
 Conc: 546.02 ng/ml



#25 AR-1248-5

R.T.: 6.405 min  
Delta R.T.: -0.001 min  
Response: 56393411  
Conc: 536.84 ng/ml

Instrument :  
ECD\_O  
ClientSampleId :  
AR1248CCC500



#25 AR-1248-5

R.T.: 5.415 min  
Delta R.T.: -0.004 min  
Response: 20470519  
Conc: 565.35 ng/ml