

Data Path : Z:\pestpcbsrv\HPCHEM1\ECD_0\Data\PO110520\
 Data File : PO073114.D
 Signal(s) : Signal #1: ECD1A.CH Signal #2: ECD2B.CH
 Acq On : 05 Nov 2020 16:18
 Operator : DD\AJ
 Sample : L4625-12MS
 Misc :
 ALS Vial : 16 Sample Multiplier: 1

Instrument :
 ECD_O
 ClientSampled :

Integration File signal 1: autoint1.e
 Integration File signal 2: autoint2.e
 Quant Time: Nov 06 00:44:16 2020
 Quant Method : Z:\pestpcbsrv\HPCHEM1\ECD_0\methods\PO110420.M
 Quant Title : GC EXTRACTABLES
 QLast Update : Thu Nov 05 05:38:46 2020
 Response via : Initial Calibration
 Integrator: ChemStation 6890 Scale Mode: Small noise peaks clipped

Volume Inj. : 2 µl
 Signal #1 Phase : ZB-MR1 Signal #2 Phase: ZB-MR2
 Signal #1 Info : 30Mx0.32mmx 0.50µ Signal #2 Info : 30M x 0.32mm x 0.25µm

Compound	RT#1	RT#2	Resp#1	Resp#2	ng/ml	ng/ml
System Monitoring Compounds						
1) SA Tetrachlo...	4.947	4.021	1360001	817837	25.661	22.887
2) SA Decachlor...	10.973	9.296	1109136	863966	26.802	25.897
Target Compounds						
3) L1 AR-1016-1	6.270	5.272	1141621	743919	575.545	505.144
4) L1 AR-1016-2	6.293	5.293	1591863	1000282	580.661	502.777
5) L1 AR-1016-3	6.360	5.483	963039	544408	577.847	572.049
6) L1 AR-1016-4	6.467	5.535	815998	456774	605.362	542.352
7) L1 AR-1016-5	6.784	5.762	753636	568662	664.339	527.691
8) L2 AR-1221-1	5.192	4.276	118261	62196	171.697	131.227
9) L2 AR-1221-2	5.297	4.376	151758	104829	298.286	292.733
10) L2 AR-1221-3	5.384	4.464	625561	382867	399.904	348.923
11) L3 AR-1232-1	5.384	4.464	625561	382867	499.601	444.792
12) L3 AR-1232-2	5.974	5.293	771194	1000282	1246.364	1132.488
13) L3 AR-1232-3	6.293	5.483	1591863	544408	1265.386	1275.766
14) L3 AR-1232-4	6.467	5.579	815998	543149	1337.543	1289.956
15) L3 AR-1232-5	6.566	5.762	631690	568662	1509.274	1270.293
16) L4 AR-1242-1	6.270	5.272	1141621	743919	656.644	594.868
17) L4 AR-1242-2	6.293	5.293	1591863	1000282	664.611	600.407
18) L4 AR-1242-3	6.360	5.483	963039	544408	657.714	653.099
19) L4 AR-1242-4	6.467	5.579	815998	543149	677.189	619.666
20) L4 AR-1242-5	7.253	6.139	138142	482697	105.542	424.554 #
21) L5 AR-1248-1	6.270	5.272	1141621	743919	847.935	793.489
22) L5 AR-1248-2	6.566	5.535	631690	456774	364.128	352.667
23) L5 AR-1248-3	6.784	5.579	753636	543149	401.973	401.999
24) L5 AR-1248-4	7.212	5.762	152954	568662	63.264	358.572 #
25) L5 AR-1248-5	7.253	6.182	138142	77323	60.179	48.561
26) L6 AR-1254-1	7.182	6.139	615738	482697	263.165	200.904
27) L6 AR-1254-2	7.412	6.298	765904	468680	217.366	218.985
28) L6 AR-1254-3	7.796	6.735f	514156	890187	142.968	264.607 #
29) L6 AR-1254-4	8.090	6.953	323885	123667	107.628	55.684 #
30) L6 AR-1254-5	8.520	7.380	2398415	1835056	828.538	604.518 #
31) L7 AR-1260-1	7.963	6.853	1559066	1182651	715.748	588.660
32) L7 AR-1260-2	8.228	7.048	1933297	1437672	713.617	579.302
33) L7 AR-1260-3	8.595	7.202	1468052	1354644	713.204	600.165
34) L7 AR-1260-4	8.825	7.684	1600206	1047444	701.017	566.087
35) L7 AR-1260-5	9.153	7.929	3121119	2579830	707.599	602.464
36) L8 AR-1262-1	8.595	7.380	1468052	1835056	430.790	1178.356 #
37) L8 AR-1262-2	9.153	7.929	3121119	2579830	537.640	509.914
38) L8 AR-1262-3	9.486f	8.215	2076708	666015	499.273	328.081 #
39) L8 AR-1262-4	9.556	8.276	544957	1899435	169.465	517.311 #
40) L8 AR-1262-5	10.225	8.772	830010	675586	394.627	386.251
41) L9 AR-1268-1	9.486f	8.215	2076708	666015	293.044	117.140 #

Data Path : Z:\pestpcbsrv\HPCHEM1\ECD_0\Data\PO110520\
 Data File : PO073114.D
 Signal(s) : Signal #1: ECD1A.CH Signal #2: ECD2B.CH
 Acq On : 05 Nov 2020 16:18
 Operator : DD\AJ
 Sample : L4625-12MS
 Misc :
 ALS Vial : 16 Sample Multiplier: 1

Instrument :
 ECD_0
 ClientSampleId :

Integration File signal 1: autoint1.e
 Integration File signal 2: autoint2.e
 Quant Time: Nov 06 00:44:16 2020
 Quant Method : Z:\pestpcbsrv\HPCHEM1\ECD_0\methods\PO110420.M
 Quant Title : GC EXTRACTABLES
 QLast Update : Thu Nov 05 05:38:46 2020
 Response via : Initial Calibration
 Integrator: ChemStation 6890 Scale Mode: Small noise peaks clipped

Volume Inj. : 2 µl
 Signal #1 Phase : ZB-MR1 Signal #2 Phase: ZB-MR2
 Signal #1 Info : 30Mx0.32mmx 0.50µ Signal #2 Info : 30M x 0.32mm x 0.25µm

	Compound	RT#1	RT#2	Resp#1	Resp#2	ng/ml	ng/ml
42)	L9 AR-1268-2	9.556	8.276	544957	1899435	84.114	374.873 #
43)	L9 AR-1268-3	9.786	8.487	160558	104453	28.745	23.707
44)	L9 AR-1268-4	10.225	8.772	830010	675586	357.911	350.849
45)	L9 AR-1268-5	10.638	9.051	567780	391670	35.105	30.088

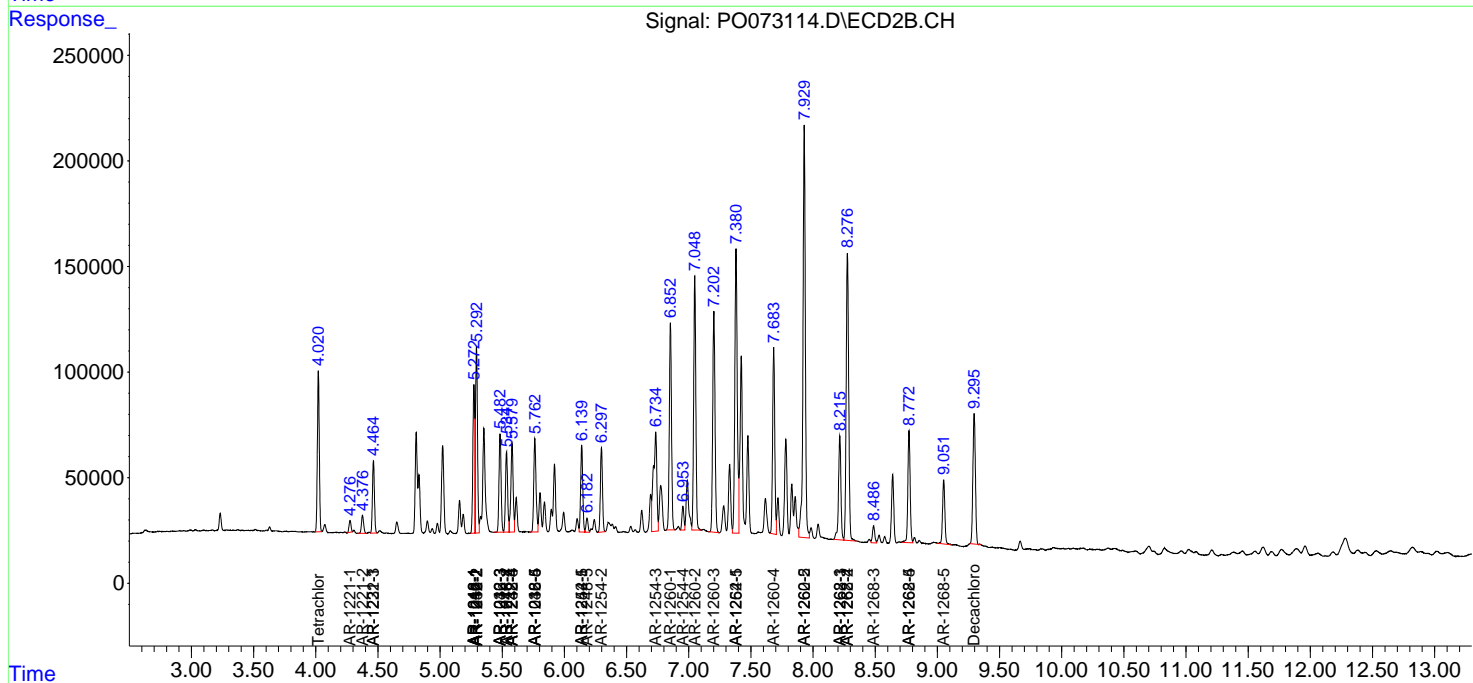
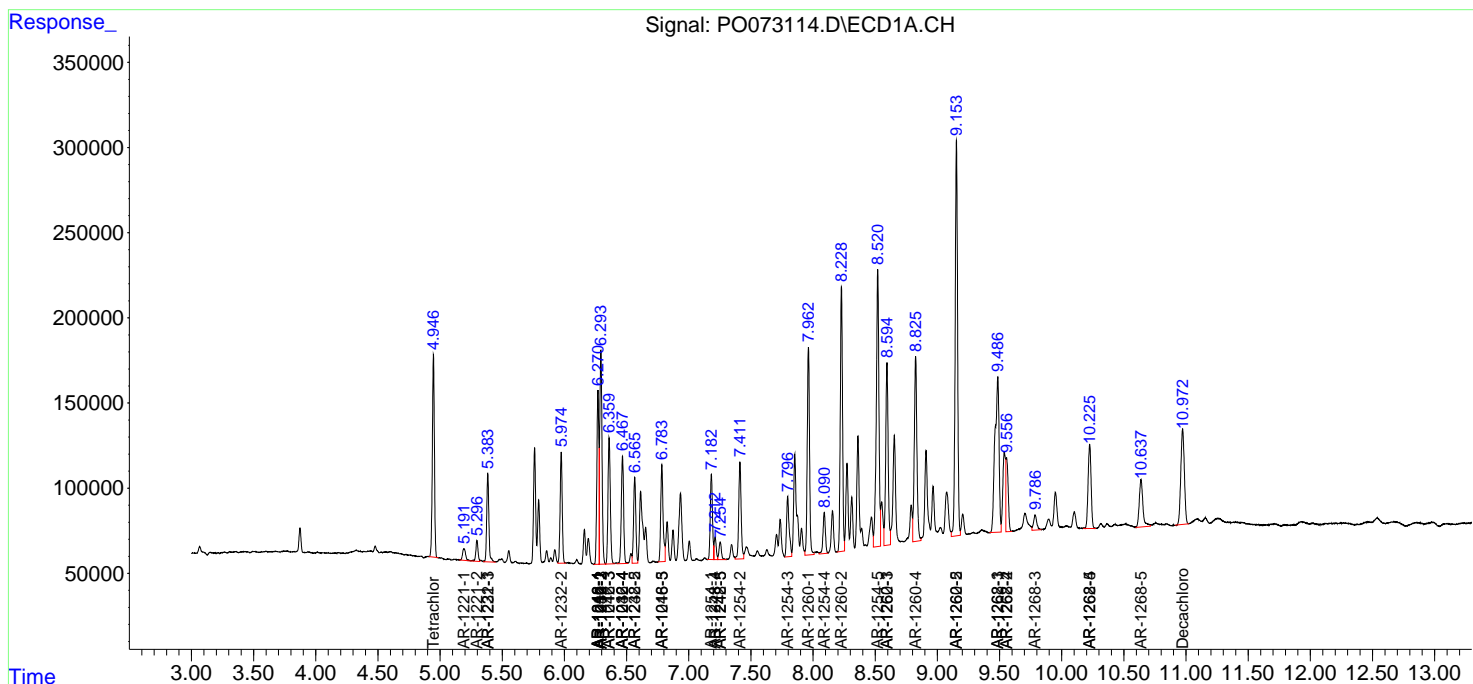
(f)=RT Delta > 1/2 Window (#)=Amounts differ by > 25% (m)=manual int.

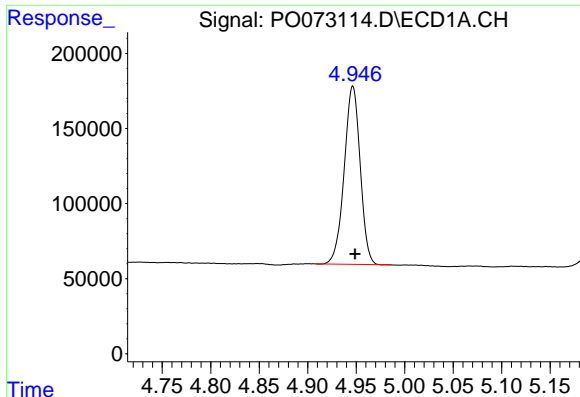
Data Path : Z:\pestpcbsrv\HPCHEM1\ECD_O\Data\PO110520\
 Data File : PO073114.D
 Signal(s) : Signal #1: ECD1A.CH Signal #2: ECD2B.CH
 Acq On : 05 Nov 2020 16:18
 Operator : DD\AJ
 Sample : L4625-12MS
 Misc :
 ALS Vial : 16 Sample Multiplier: 1

Instrument :
 ECD_O
 ClientSampled :

Integration File signal 1: autoint1.e
 Integration File signal 2: autoint2.e
 Quant Time: Nov 06 00:44:16 2020
 Quant Method : Z:\pestpcbsrv\HPCHEM1\ECD_O\methods\PO110420.M
 Quant Title : GC EXTRACTABLES
 QLast Update : Thu Nov 05 05:38:46 2020
 Response via : Initial Calibration
 Integrator: ChemStation 6890 Scale Mode: Small noise peaks clipped

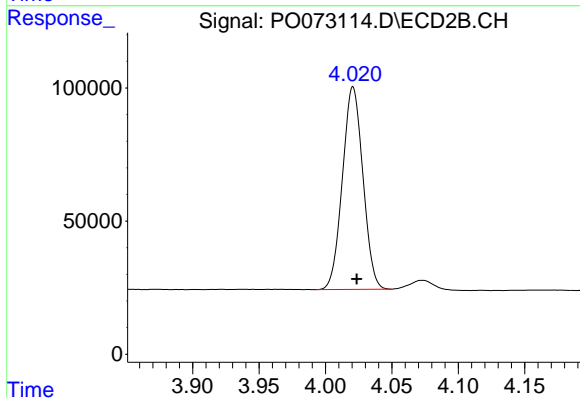
Volume Inj. : 2 µl
 Signal #1 Phase : ZB-MR1 Signal #2 Phase: ZB-MR2
 Signal #1 Info : 30Mx0.32mmx 0.50µ Signal #2 Info : 30M x 0.32mm x 0.25µm



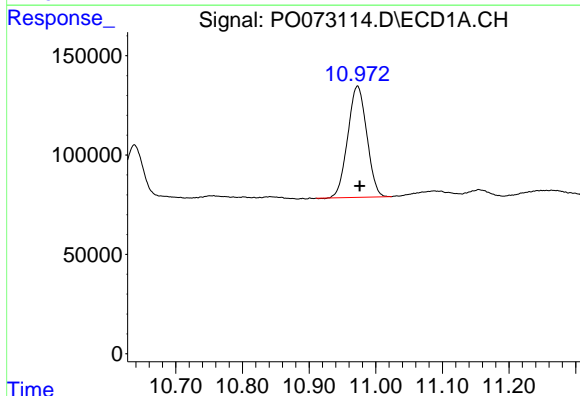


#1 Tetrachloro-m-xylene
 R.T.: 4.947 min
 Delta R.T.: -0.002 min
 Response: 1360001
 Conc: 25.66 ng/ml

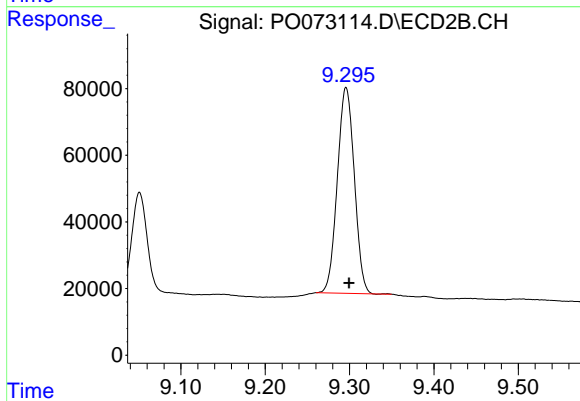
Instrument :
 ECD_O
 ClientSampleId :



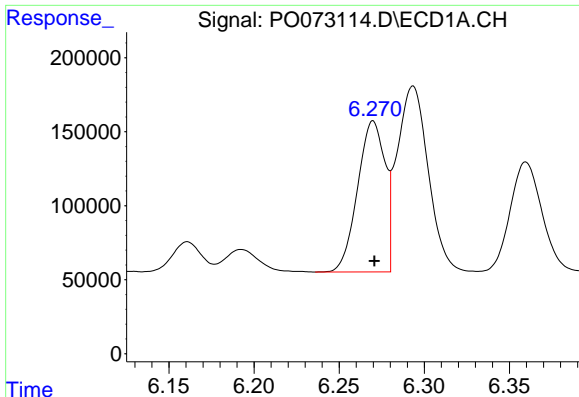
#1 Tetrachloro-m-xylene
 R.T.: 4.021 min
 Delta R.T.: -0.003 min
 Response: 817837
 Conc: 22.89 ng/ml



#2 Decachlorobiphenyl
 R.T.: 10.973 min
 Delta R.T.: -0.003 min
 Response: 1109136
 Conc: 26.80 ng/ml



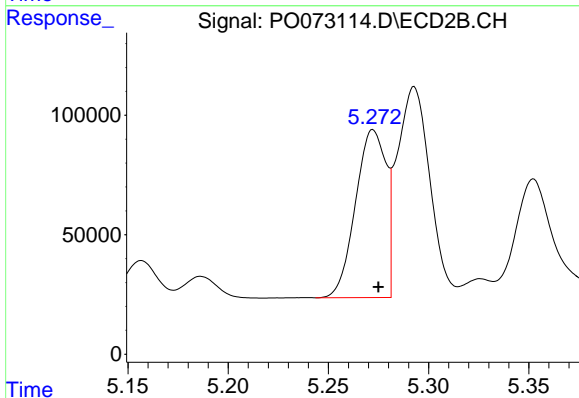
#2 Decachlorobiphenyl
 R.T.: 9.296 min
 Delta R.T.: -0.004 min
 Response: 863966
 Conc: 25.90 ng/ml



#3 AR-1016-1

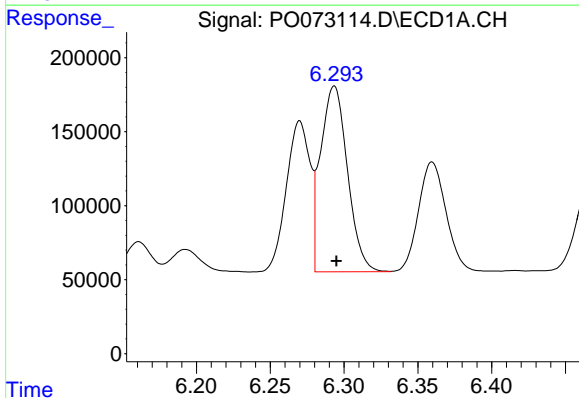
R.T.: 6.270 min
 Delta R.T.: 0.000 min
 Response: 1141621
 Conc: 575.55 ng/ml

Instrument :
 ECD_O
 ClientSampled :



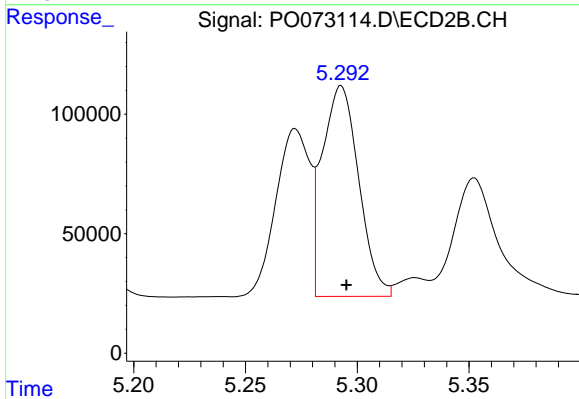
#3 AR-1016-1

R.T.: 5.272 min
 Delta R.T.: -0.003 min
 Response: 743919
 Conc: 505.14 ng/ml



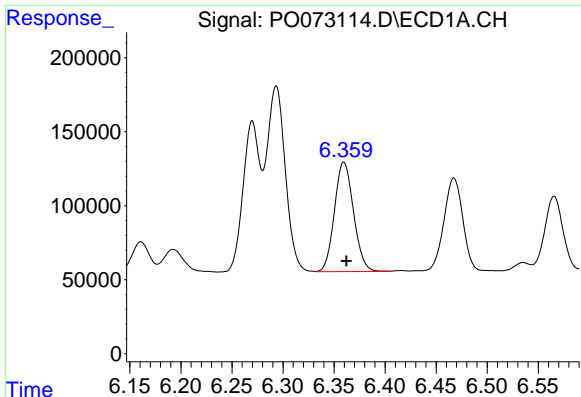
#4 AR-1016-2

R.T.: 6.293 min
 Delta R.T.: -0.002 min
 Response: 1591863
 Conc: 580.66 ng/ml



#4 AR-1016-2

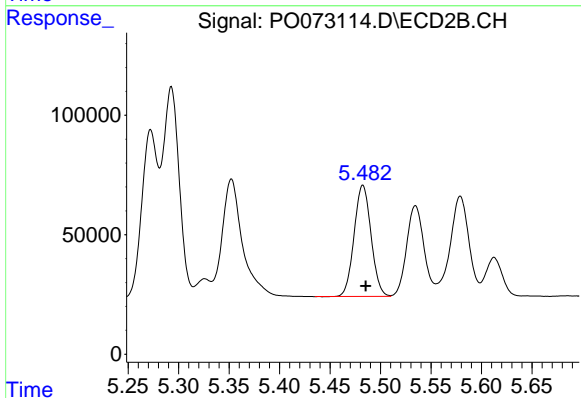
R.T.: 5.293 min
 Delta R.T.: -0.002 min
 Response: 1000282
 Conc: 502.78 ng/ml



#5 AR-1016-3

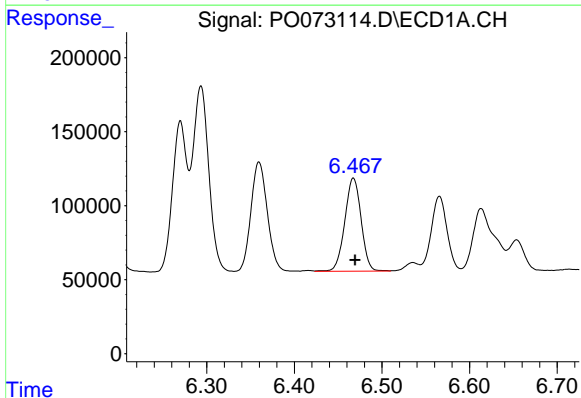
R.T.: 6.360 min
 Delta R.T.: -0.003 min
 Response: 963039
 Conc: 577.85 ng/ml

Instrument :
 ECD_O
 ClientSampled :



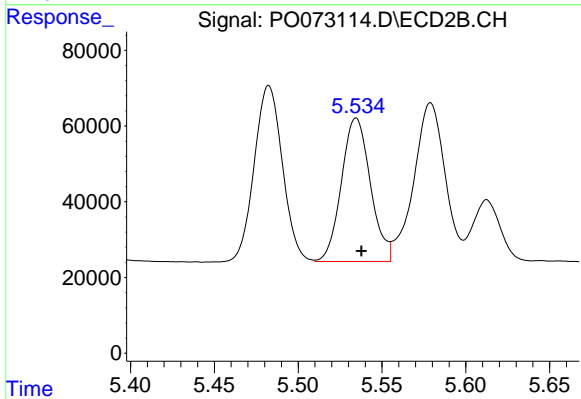
#5 AR-1016-3

R.T.: 5.483 min
 Delta R.T.: -0.003 min
 Response: 544408
 Conc: 572.05 ng/ml



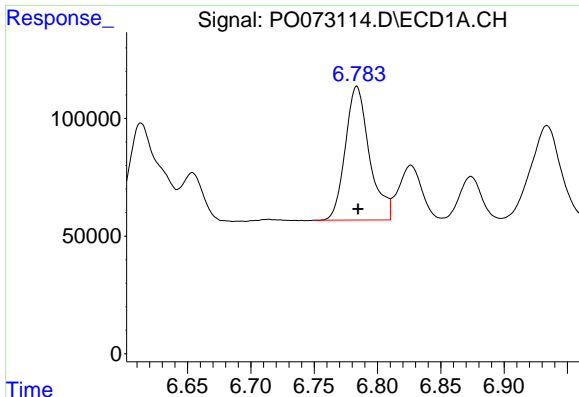
#6 AR-1016-4

R.T.: 6.467 min
 Delta R.T.: -0.002 min
 Response: 815998
 Conc: 605.36 ng/ml



#6 AR-1016-4

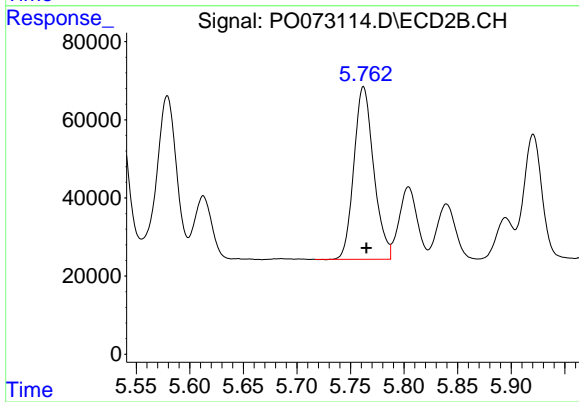
R.T.: 5.535 min
 Delta R.T.: -0.003 min
 Response: 456774
 Conc: 542.35 ng/ml



#7 AR-1016-5

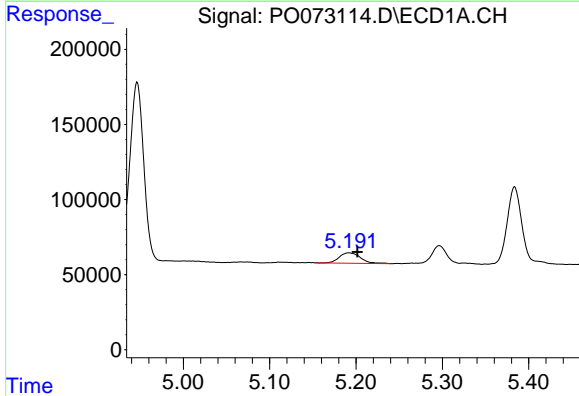
R.T.: 6.784 min
 Delta R.T.: -0.001 min
 Response: 753636
 Conc: 664.34 ng/ml

Instrument :
 ECD_O
 ClientSampleId :



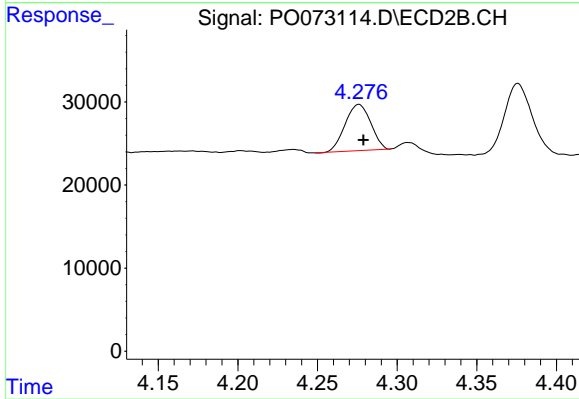
#7 AR-1016-5

R.T.: 5.762 min
 Delta R.T.: -0.003 min
 Response: 568662
 Conc: 527.69 ng/ml



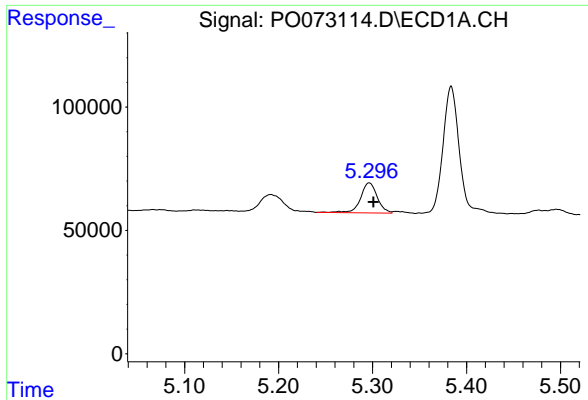
#8 AR-1221-1

R.T.: 5.192 min
 Delta R.T.: -0.010 min
 Response: 118261
 Conc: 171.70 ng/ml



#8 AR-1221-1

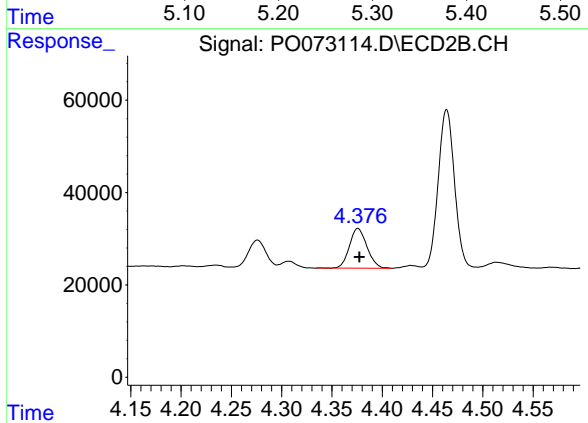
R.T.: 4.276 min
 Delta R.T.: -0.003 min
 Response: 62196
 Conc: 131.23 ng/ml



#9 AR-1221-2

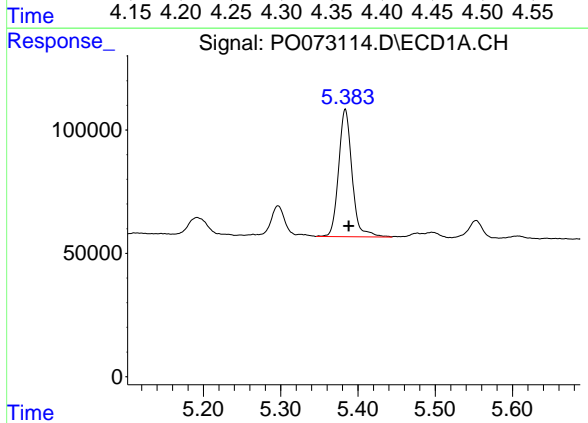
R.T.: 5.297 min
 Delta R.T.: -0.005 min
 Response: 151758
 Conc: 298.29 ng/ml

Instrument :
 ECD_O
 ClientSampled :



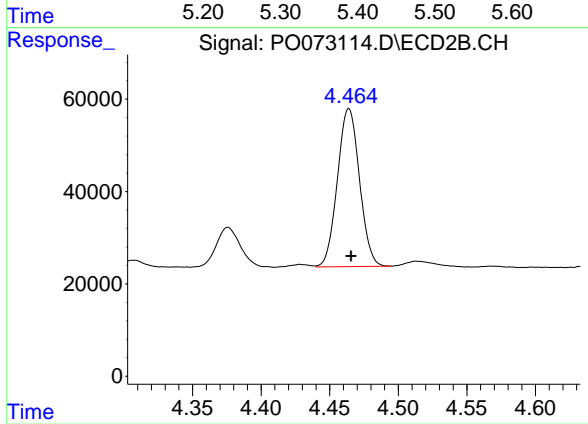
#9 AR-1221-2

R.T.: 4.376 min
 Delta R.T.: -0.001 min
 Response: 104829
 Conc: 292.73 ng/ml



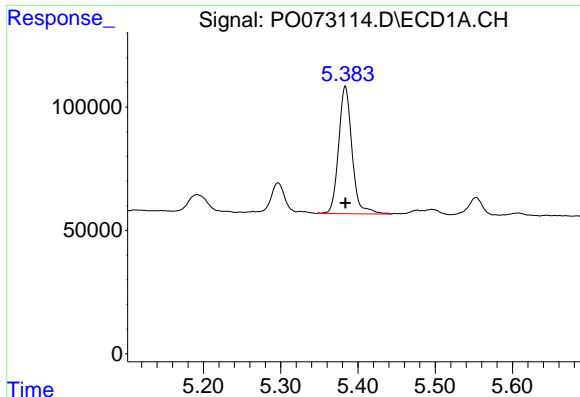
#10 AR-1221-3

R.T.: 5.384 min
 Delta R.T.: -0.004 min
 Response: 625561
 Conc: 399.90 ng/ml



#10 AR-1221-3

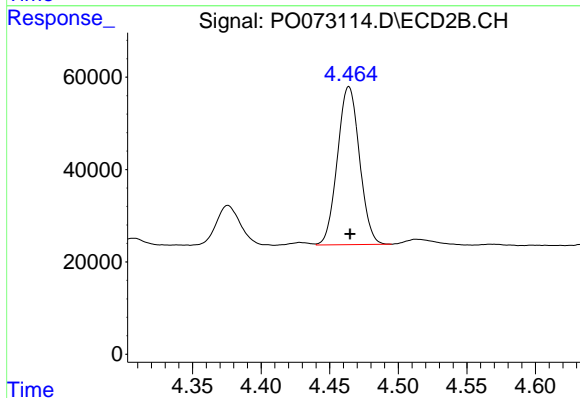
R.T.: 4.464 min
 Delta R.T.: -0.001 min
 Response: 382867
 Conc: 348.92 ng/ml



#11 AR-1232-1

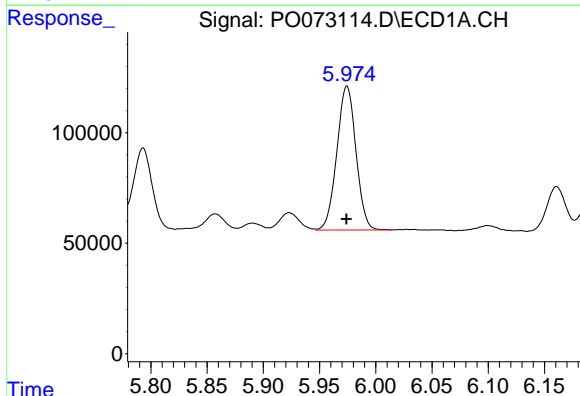
R.T.: 5.384 min
 Delta R.T.: 0.000 min
 Response: 625561
 Conc: 499.60 ng/ml

Instrument :
 ECD_O
 ClientSampleId :



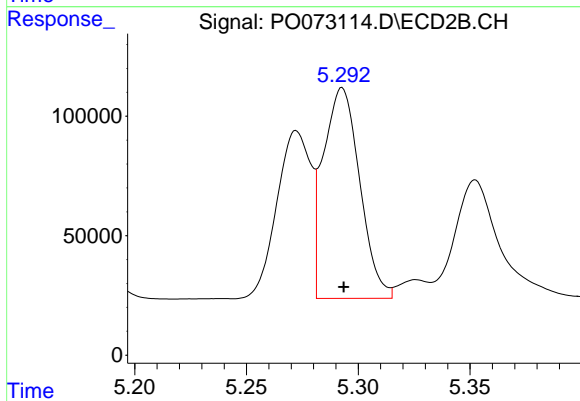
#11 AR-1232-1

R.T.: 4.464 min
 Delta R.T.: 0.000 min
 Response: 382867
 Conc: 444.79 ng/ml



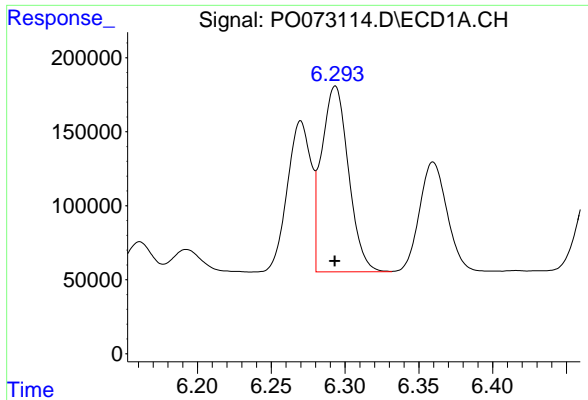
#12 AR-1232-2

R.T.: 5.974 min
 Delta R.T.: 0.000 min
 Response: 771194
 Conc: 1246.36 ng/ml



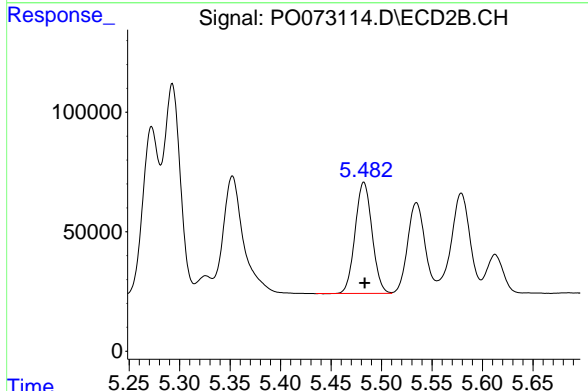
#12 AR-1232-2

R.T.: 5.293 min
 Delta R.T.: 0.000 min
 Response: 1000282
 Conc: 1132.49 ng/ml

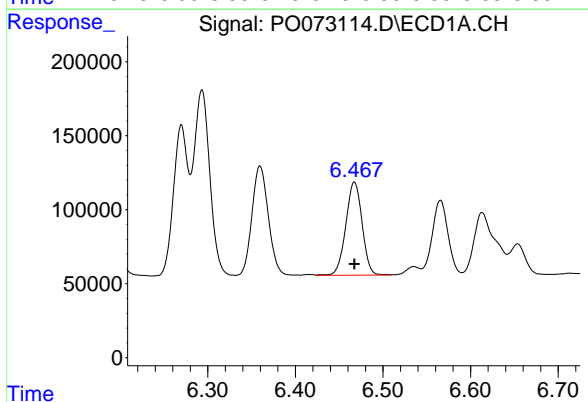


#13 AR-1232-3
 R.T.: 6.293 min
 Delta R.T.: 0.000 min
 Response: 1591863
 Conc: 1265.39 ng/ml

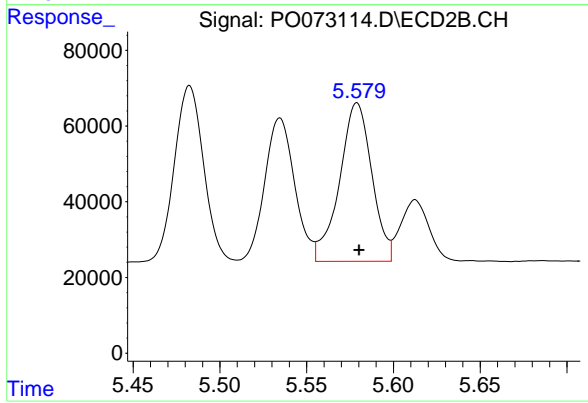
Instrument :
 ECD_O
 ClientSampleId :



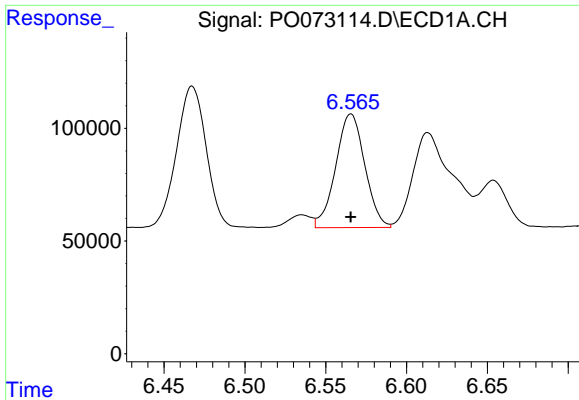
#13 AR-1232-3
 R.T.: 5.483 min
 Delta R.T.: 0.000 min
 Response: 544408
 Conc: 1275.77 ng/ml



#14 AR-1232-4
 R.T.: 6.467 min
 Delta R.T.: 0.000 min
 Response: 815998
 Conc: 1337.54 ng/ml

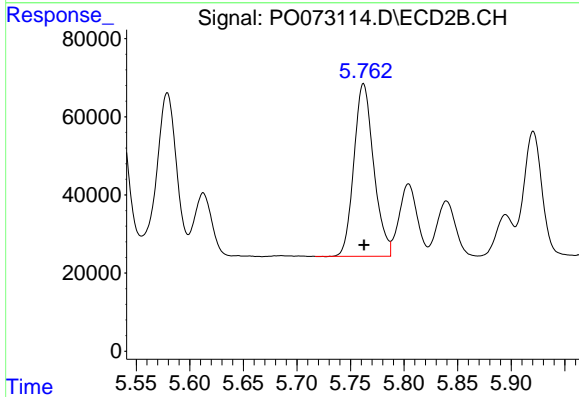


#14 AR-1232-4
 R.T.: 5.579 min
 Delta R.T.: -0.001 min
 Response: 543149
 Conc: 1289.96 ng/ml

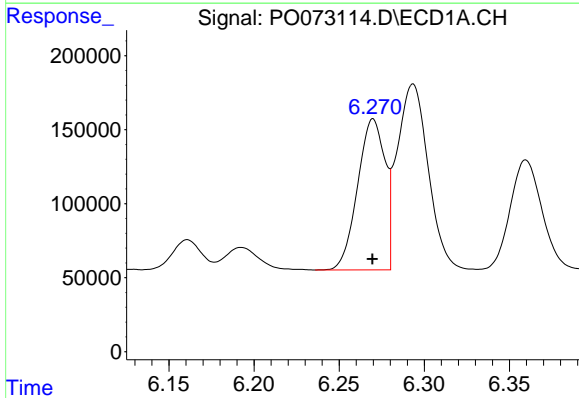


#15 AR-1232-5
 R.T.: 6.566 min
 Delta R.T.: 0.000 min
 Response: 631690
 Conc: 1509.27 ng/ml

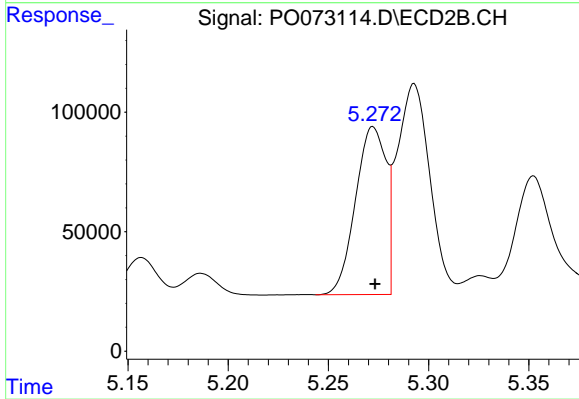
Instrument :
 ECD_O
 ClientSampleId :



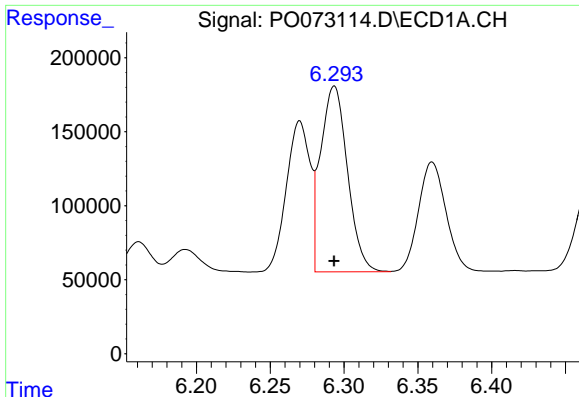
#15 AR-1232-5
 R.T.: 5.762 min
 Delta R.T.: 0.000 min
 Response: 568662
 Conc: 1270.29 ng/ml



#16 AR-1242-1
 R.T.: 6.270 min
 Delta R.T.: 0.000 min
 Response: 1141621
 Conc: 656.64 ng/ml



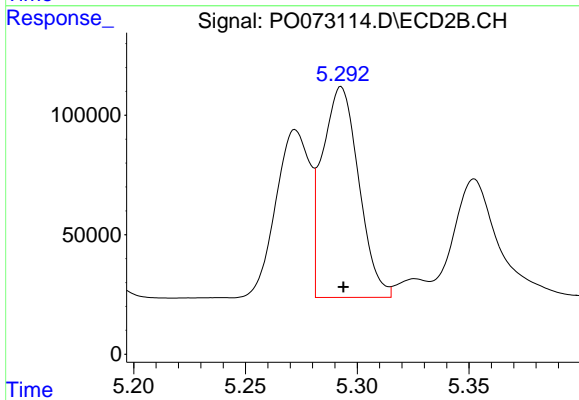
#16 AR-1242-1
 R.T.: 5.272 min
 Delta R.T.: 0.000 min
 Response: 743919
 Conc: 594.87 ng/ml



#17 AR-1242-2

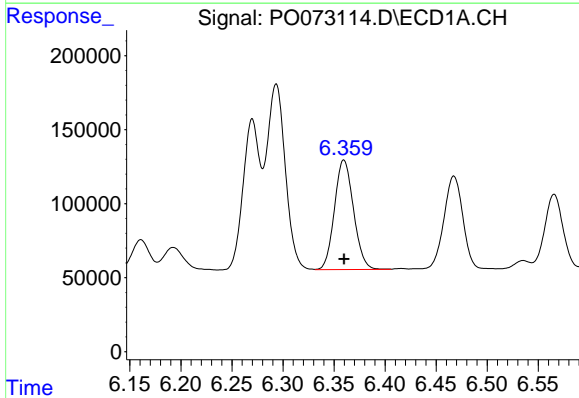
R.T.: 6.293 min
 Delta R.T.: 0.000 min
 Response: 1591863
 Conc: 664.61 ng/ml

Instrument :
 ECD_O
 ClientSampleId :



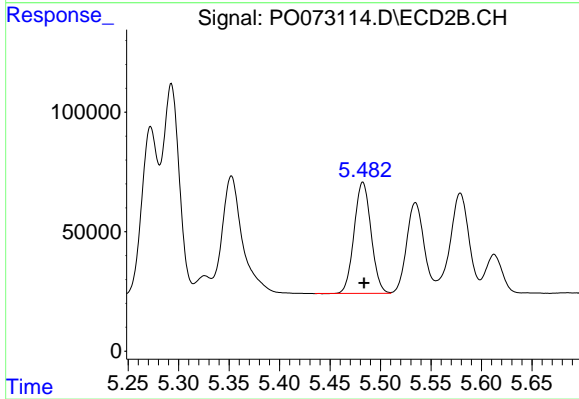
#17 AR-1242-2

R.T.: 5.293 min
 Delta R.T.: 0.000 min
 Response: 1000282
 Conc: 600.41 ng/ml



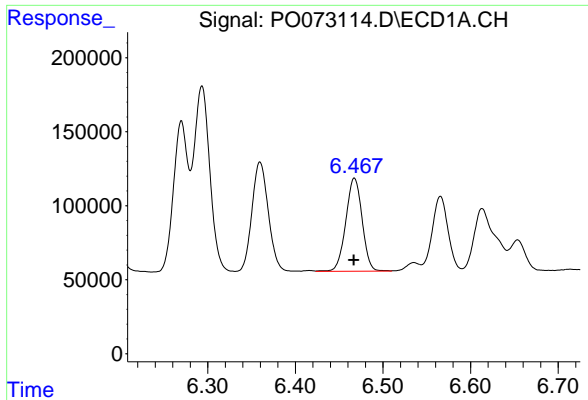
#18 AR-1242-3

R.T.: 6.360 min
 Delta R.T.: 0.000 min
 Response: 963039
 Conc: 657.71 ng/ml



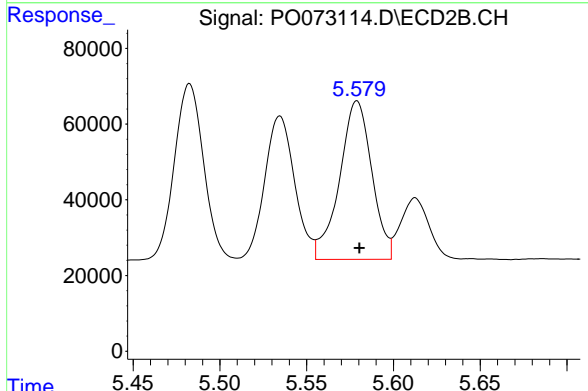
#18 AR-1242-3

R.T.: 5.483 min
 Delta R.T.: -0.001 min
 Response: 544408
 Conc: 653.10 ng/ml

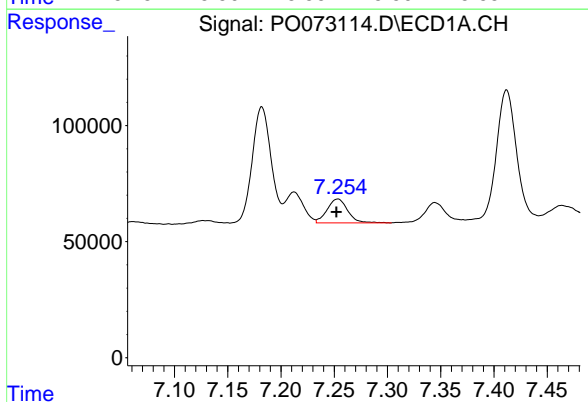


#19 AR-1242-4
 R.T.: 6.467 min
 Delta R.T.: 0.000 min
 Response: 815998
 Conc: 677.19 ng/ml

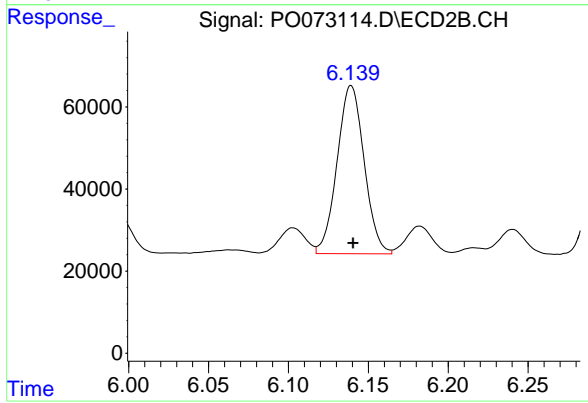
Instrument :
 ECD_O
 ClientSampleId :



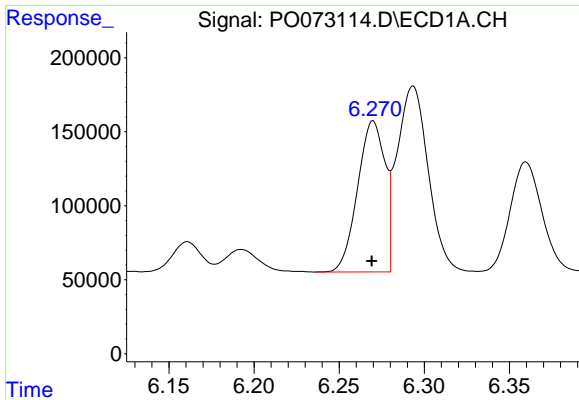
#19 AR-1242-4
 R.T.: 5.579 min
 Delta R.T.: -0.001 min
 Response: 543149
 Conc: 619.67 ng/ml



#20 AR-1242-5
 R.T.: 7.253 min
 Delta R.T.: 0.001 min
 Response: 138142
 Conc: 105.54 ng/ml

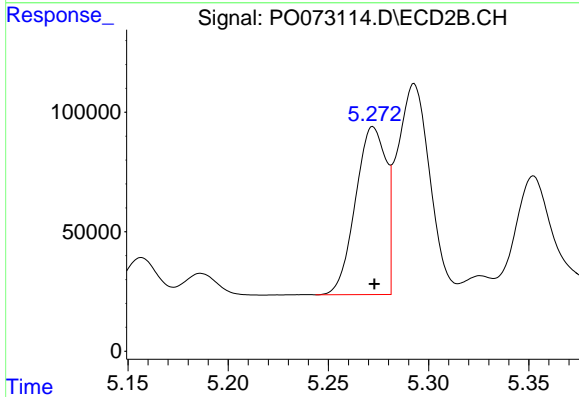


#20 AR-1242-5
 R.T.: 6.139 min
 Delta R.T.: -0.001 min
 Response: 482697
 Conc: 424.55 ng/ml

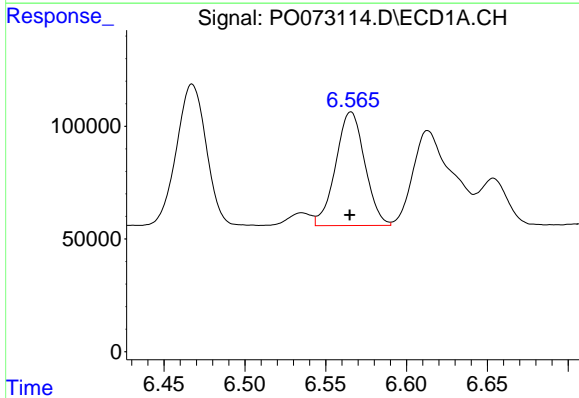


#21 AR-1248-1
 R.T.: 6.270 min
 Delta R.T.: 0.000 min
 Response: 1141621
 Conc: 847.93 ng/ml

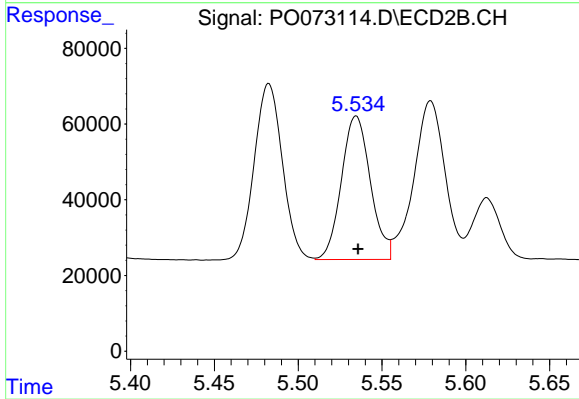
Instrument :
 ECD_O
 ClientSampled :



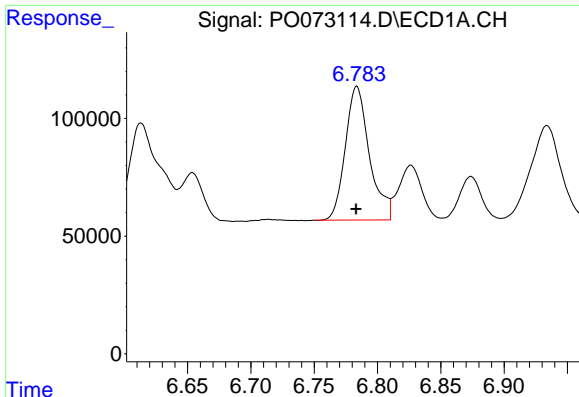
#21 AR-1248-1
 R.T.: 5.272 min
 Delta R.T.: 0.000 min
 Response: 743919
 Conc: 793.49 ng/ml



#22 AR-1248-2
 R.T.: 6.566 min
 Delta R.T.: 0.000 min
 Response: 631690
 Conc: 364.13 ng/ml



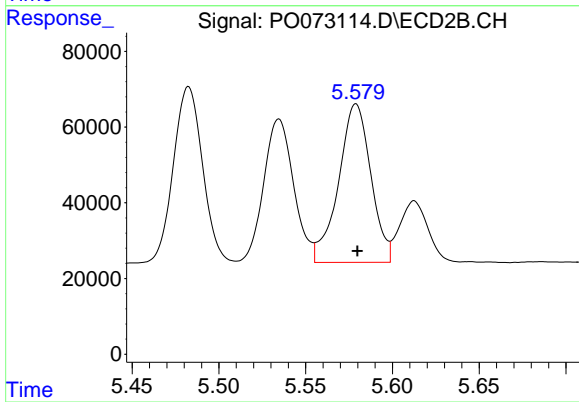
#22 AR-1248-2
 R.T.: 5.535 min
 Delta R.T.: -0.001 min
 Response: 456774
 Conc: 352.67 ng/ml



#23 AR-1248-3

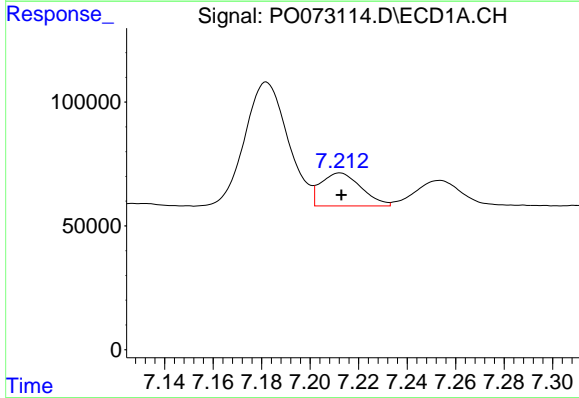
R.T.: 6.784 min
 Delta R.T.: 0.000 min
 Response: 753636
 Conc: 401.97 ng/ml

Instrument :
 ECD_O
 ClientSampled :



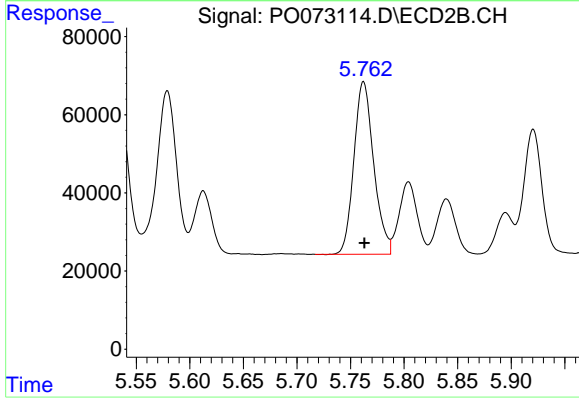
#23 AR-1248-3

R.T.: 5.579 min
 Delta R.T.: 0.000 min
 Response: 543149
 Conc: 402.00 ng/ml



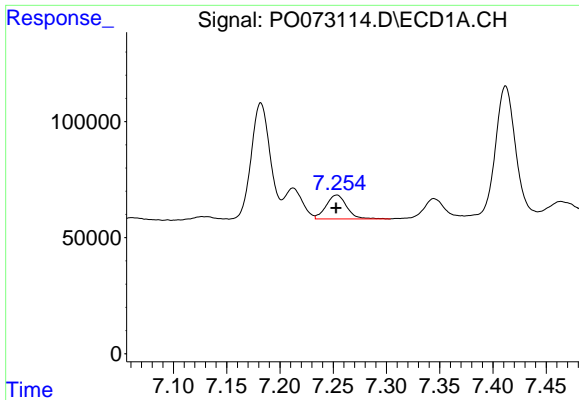
#24 AR-1248-4

R.T.: 7.212 min
 Delta R.T.: 0.000 min
 Response: 152954
 Conc: 63.26 ng/ml



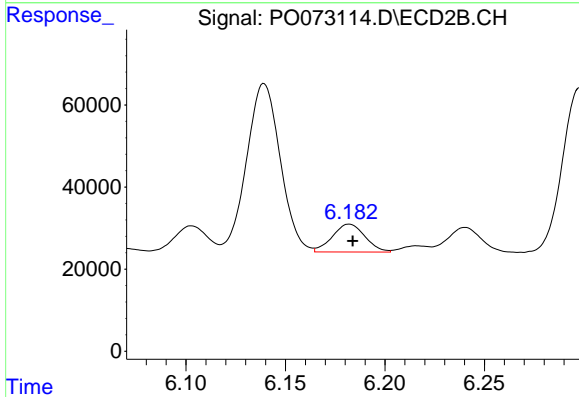
#24 AR-1248-4

R.T.: 5.762 min
 Delta R.T.: 0.000 min
 Response: 568662
 Conc: 358.57 ng/ml

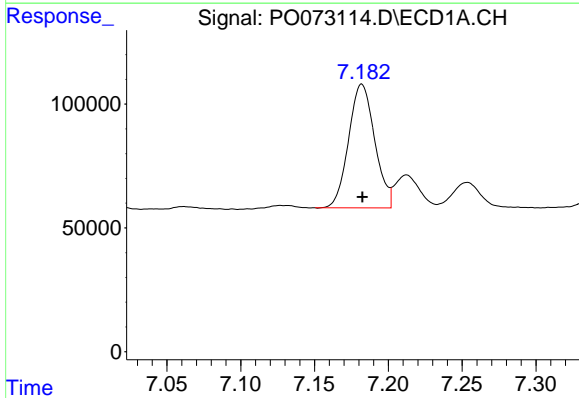


#25 AR-1248-5
 R.T.: 7.253 min
 Delta R.T.: 0.000 min
 Response: 138142
 Conc: 60.18 ng/ml

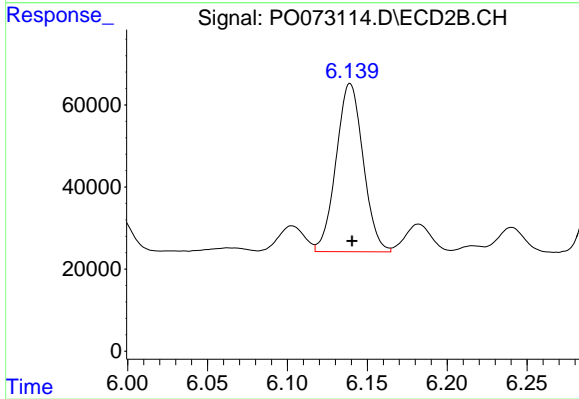
Instrument :
 ECD_O
 ClientSampleId :



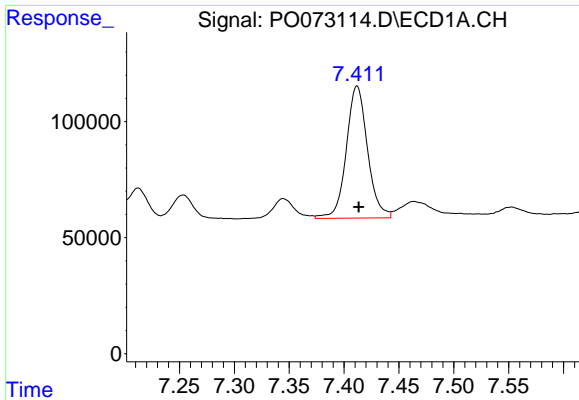
#25 AR-1248-5
 R.T.: 6.182 min
 Delta R.T.: -0.002 min
 Response: 77323
 Conc: 48.56 ng/ml



#26 AR-1254-1
 R.T.: 7.182 min
 Delta R.T.: 0.000 min
 Response: 615738
 Conc: 263.16 ng/ml



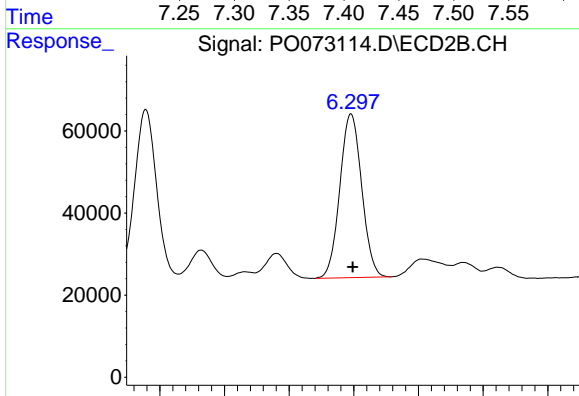
#26 AR-1254-1
 R.T.: 6.139 min
 Delta R.T.: -0.001 min
 Response: 482697
 Conc: 200.90 ng/ml



#27 AR-1254-2

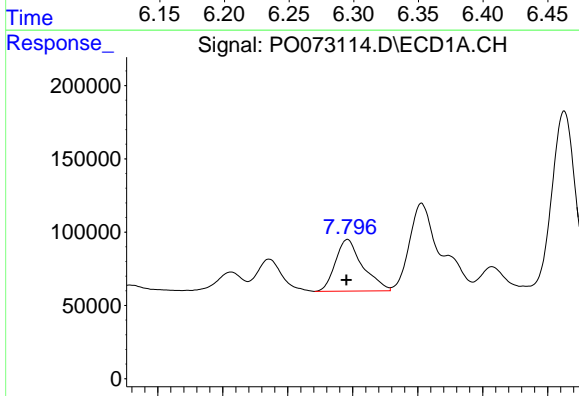
R.T.: 7.412 min
 Delta R.T.: -0.001 min
 Response: 765904
 Conc: 217.37 ng/ml

Instrument :
 ECD_O
 ClientSampled :



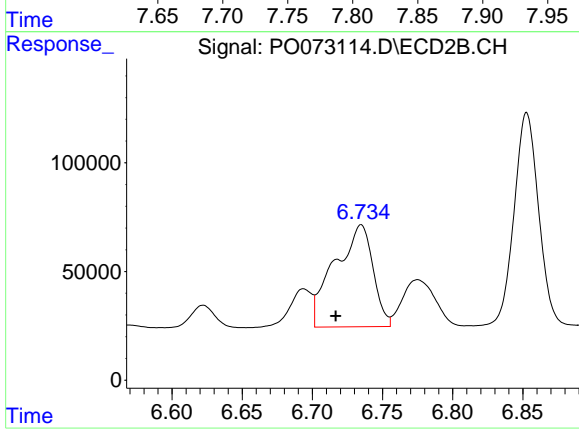
#27 AR-1254-2

R.T.: 6.298 min
 Delta R.T.: -0.001 min
 Response: 468680
 Conc: 218.99 ng/ml



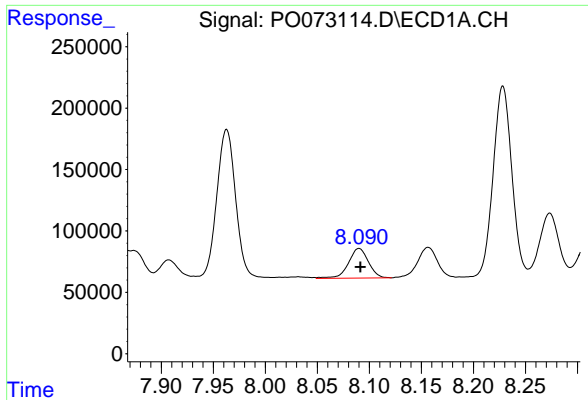
#28 AR-1254-3

R.T.: 7.796 min
 Delta R.T.: 0.000 min
 Response: 514156
 Conc: 142.97 ng/ml



#28 AR-1254-3

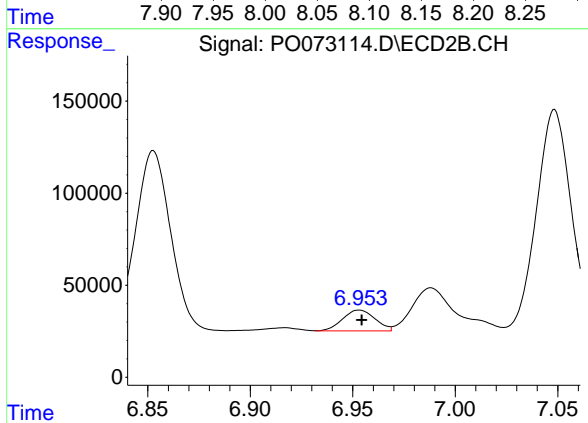
R.T.: 6.735 min
 Delta R.T.: 0.018 min
 Response: 890187
 Conc: 264.61 ng/ml



#29 AR-1254-4

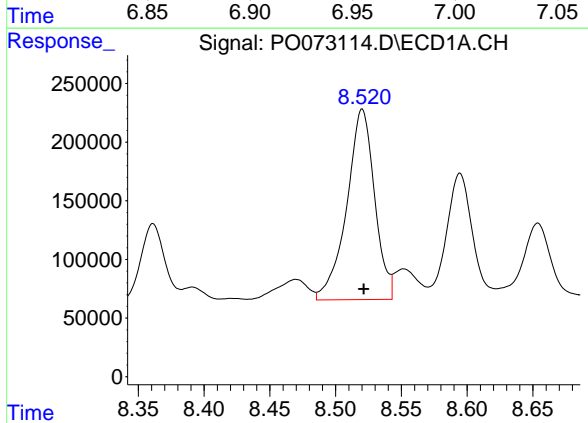
R.T.: 8.090 min
 Delta R.T.: -0.001 min
 Response: 323885
 Conc: 107.63 ng/ml

Instrument :
 ECD_O
 ClientSampled :



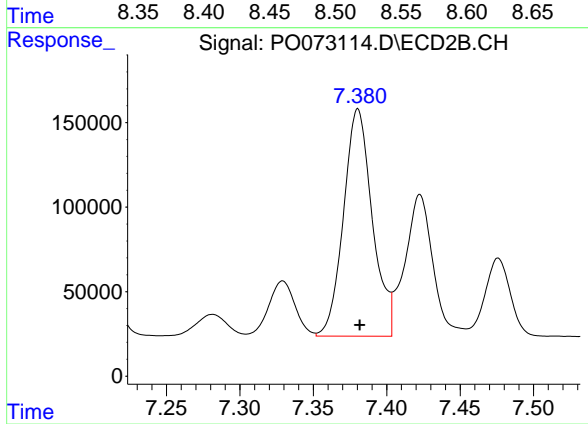
#29 AR-1254-4

R.T.: 6.953 min
 Delta R.T.: -0.001 min
 Response: 123667
 Conc: 55.68 ng/ml



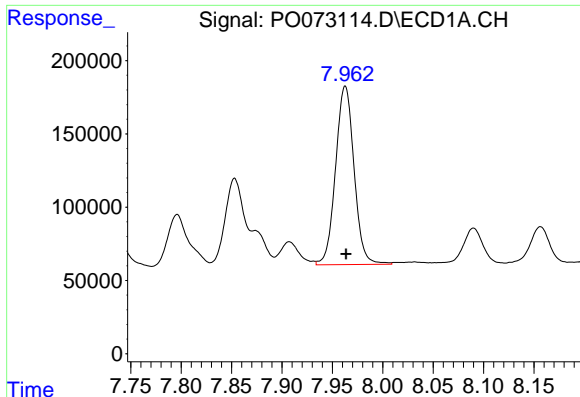
#30 AR-1254-5

R.T.: 8.520 min
 Delta R.T.: -0.001 min
 Response: 2398415
 Conc: 828.54 ng/ml



#30 AR-1254-5

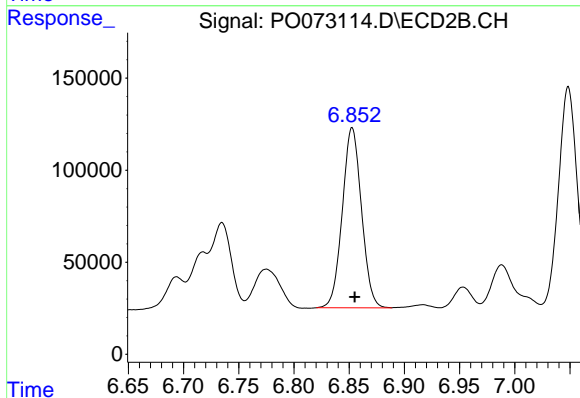
R.T.: 7.380 min
 Delta R.T.: -0.001 min
 Response: 1835056
 Conc: 604.52 ng/ml



#31 AR-1260-1

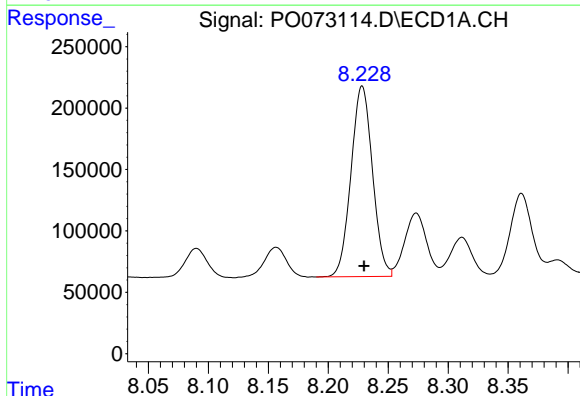
R.T.: 7.963 min
 Delta R.T.: -0.001 min
 Response: 1559066
 Conc: 715.75 ng/ml

Instrument :
 ECD_O
 ClientSampled :



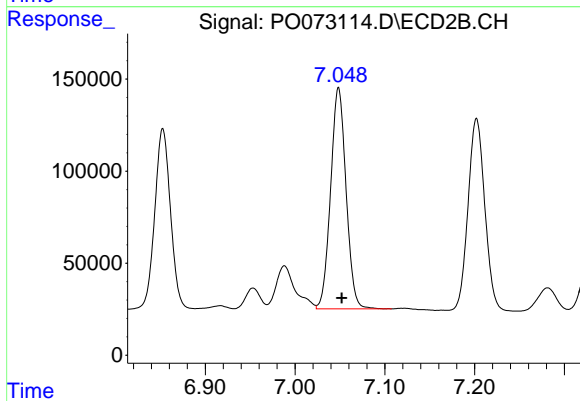
#31 AR-1260-1

R.T.: 6.853 min
 Delta R.T.: -0.002 min
 Response: 1182651
 Conc: 588.66 ng/ml



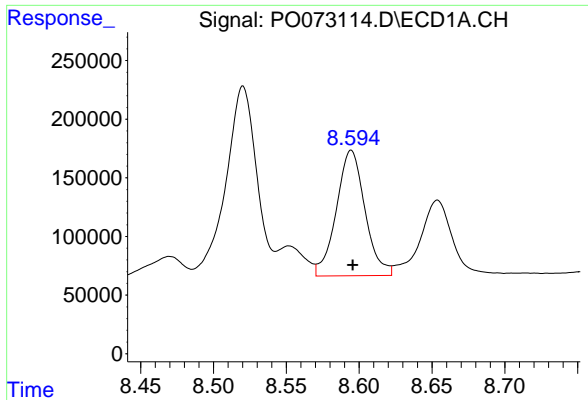
#32 AR-1260-2

R.T.: 8.228 min
 Delta R.T.: -0.002 min
 Response: 1933297
 Conc: 713.62 ng/ml



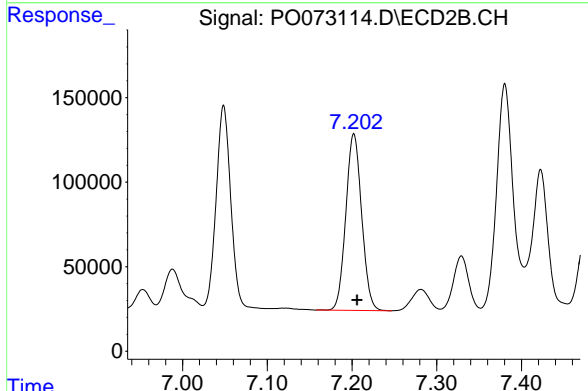
#32 AR-1260-2

R.T.: 7.048 min
 Delta R.T.: -0.003 min
 Response: 1437672
 Conc: 579.30 ng/ml

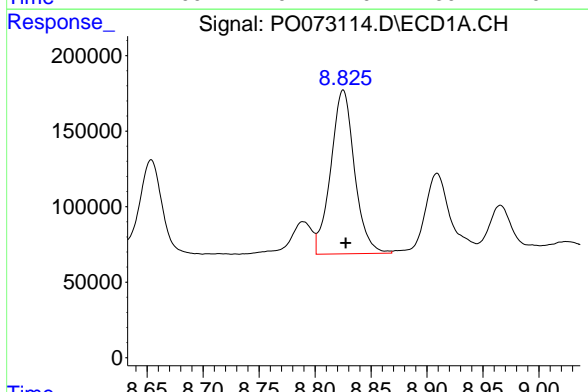


#33 AR-1260-3
 R.T.: 8.595 min
 Delta R.T.: -0.001 min
 Response: 1468052
 Conc: 713.20 ng/ml

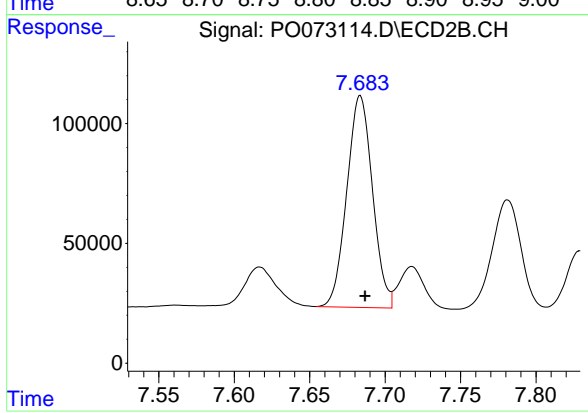
Instrument :
 ECD_O
 ClientSampleId :



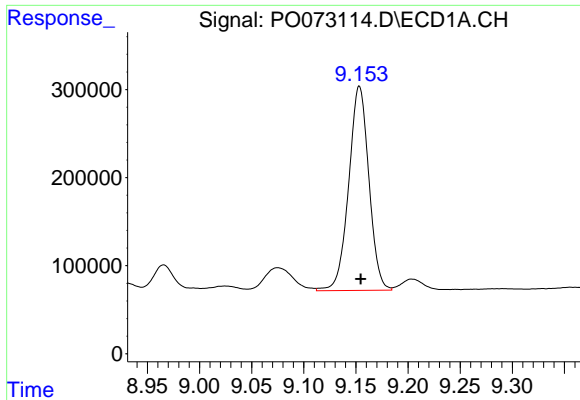
#33 AR-1260-3
 R.T.: 7.202 min
 Delta R.T.: -0.004 min
 Response: 1354644
 Conc: 600.17 ng/ml



#34 AR-1260-4
 R.T.: 8.825 min
 Delta R.T.: -0.002 min
 Response: 1600206
 Conc: 701.02 ng/ml



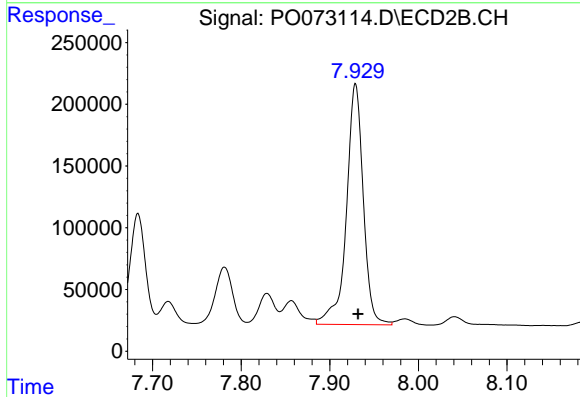
#34 AR-1260-4
 R.T.: 7.684 min
 Delta R.T.: -0.003 min
 Response: 1047444
 Conc: 566.09 ng/ml



#35 AR-1260-5

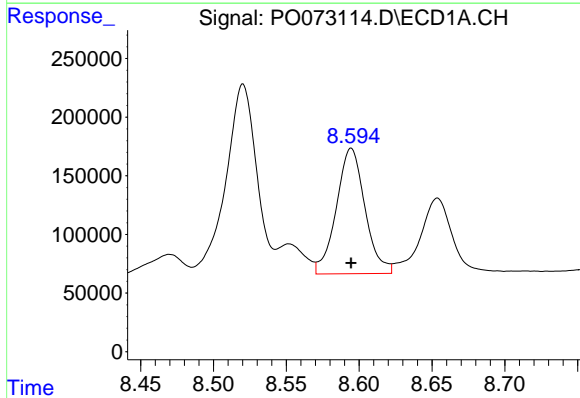
R.T.: 9.153 min
 Delta R.T.: -0.001 min
 Response: 3121119
 Conc: 707.60 ng/ml

Instrument :
 ECD_O
 ClientSampleId :



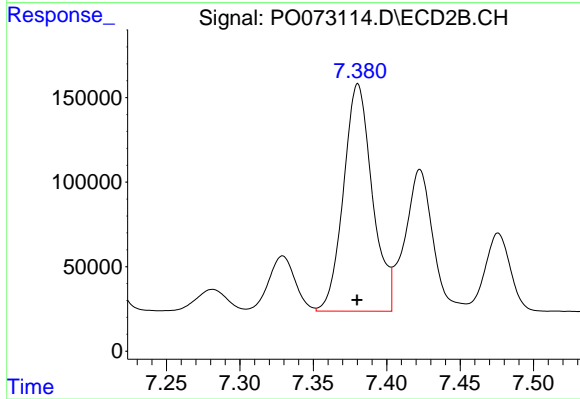
#35 AR-1260-5

R.T.: 7.929 min
 Delta R.T.: -0.003 min
 Response: 2579830
 Conc: 602.46 ng/ml



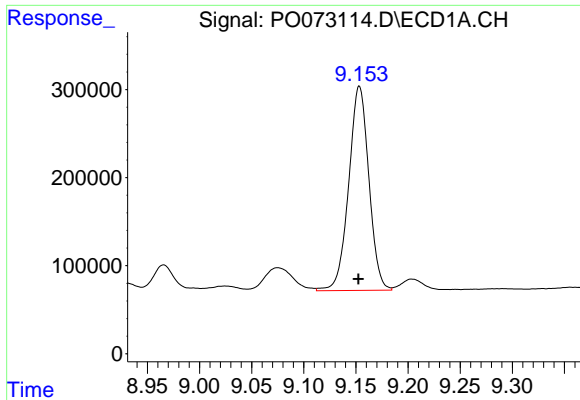
#36 AR-1262-1

R.T.: 8.595 min
 Delta R.T.: 0.000 min
 Response: 1468052
 Conc: 430.79 ng/ml



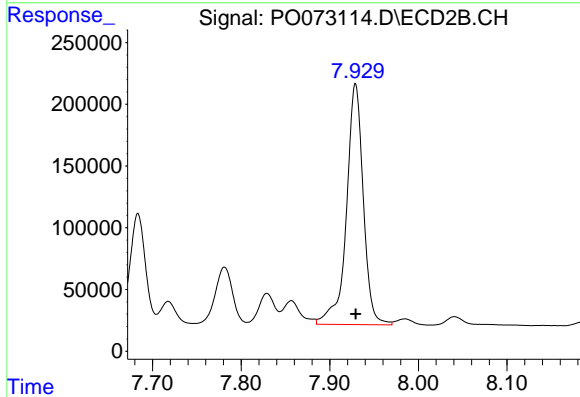
#36 AR-1262-1

R.T.: 7.380 min
 Delta R.T.: 0.000 min
 Response: 1835056
 Conc: 1178.36 ng/ml

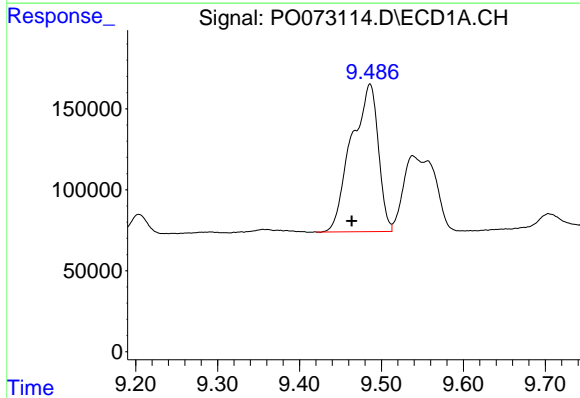


#37 AR-1262-2
 R.T.: 9.153 min
 Delta R.T.: 0.000 min
 Response: 3121119
 Conc: 537.64 ng/ml

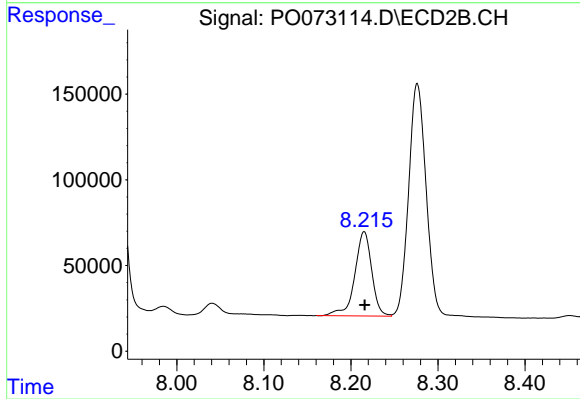
Instrument :
 ECD_O
 ClientSampled :



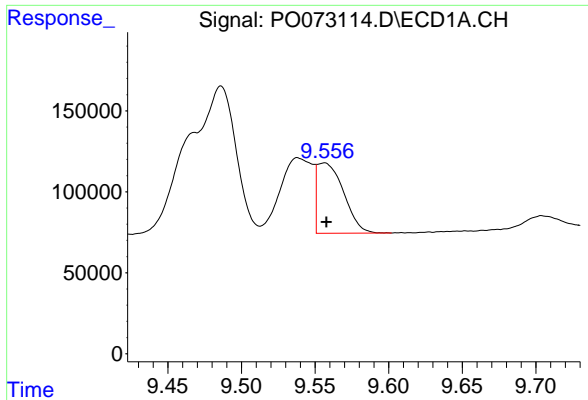
#37 AR-1262-2
 R.T.: 7.929 min
 Delta R.T.: 0.000 min
 Response: 2579830
 Conc: 509.91 ng/ml



#38 AR-1262-3
 R.T.: 9.486 min
 Delta R.T.: 0.022 min
 Response: 2076708
 Conc: 499.27 ng/ml

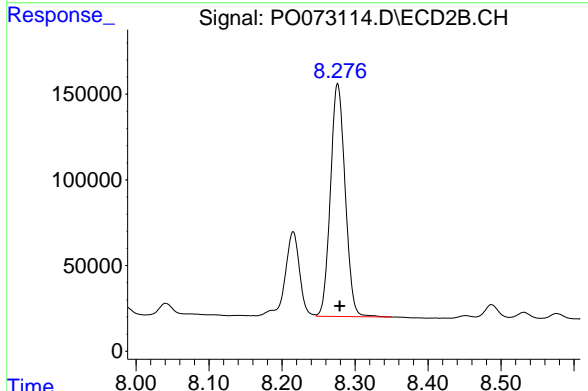


#38 AR-1262-3
 R.T.: 8.215 min
 Delta R.T.: 0.000 min
 Response: 666015
 Conc: 328.08 ng/ml

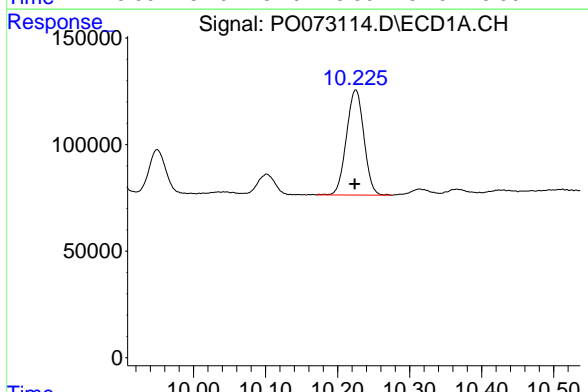


#39 AR-1262-4
 R.T.: 9.556 min
 Delta R.T.: -0.001 min
 Response: 544957
 Conc: 169.46 ng/ml

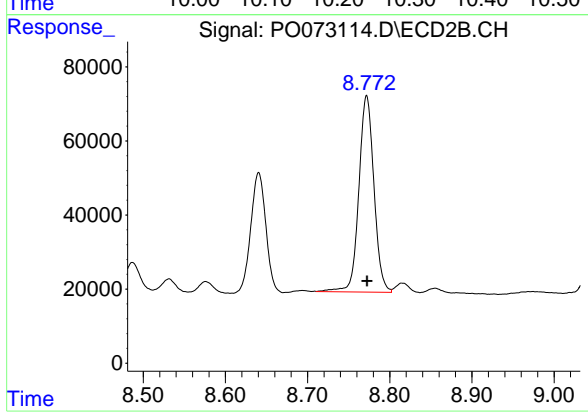
Instrument :
 ECD_O
 ClientSampled :



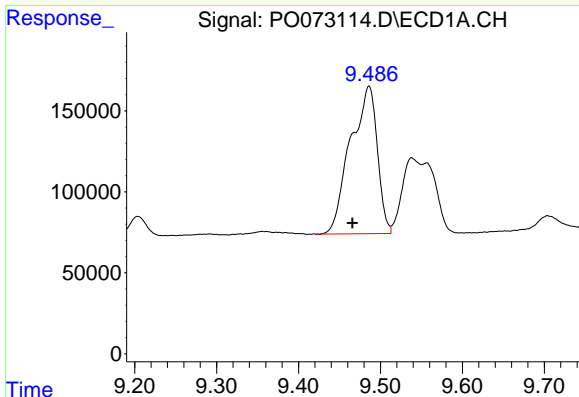
#39 AR-1262-4
 R.T.: 8.276 min
 Delta R.T.: -0.003 min
 Response: 1899435
 Conc: 517.31 ng/ml



#40 AR-1262-5
 R.T.: 10.225 min
 Delta R.T.: 0.001 min
 Response: 830010
 Conc: 394.63 ng/ml



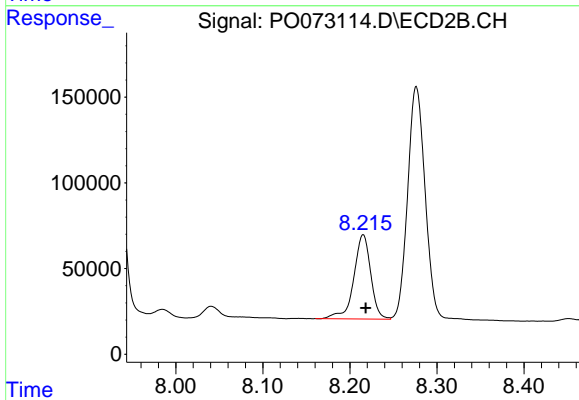
#40 AR-1262-5
 R.T.: 8.772 min
 Delta R.T.: 0.000 min
 Response: 675586
 Conc: 386.25 ng/ml



#41 AR-1268-1

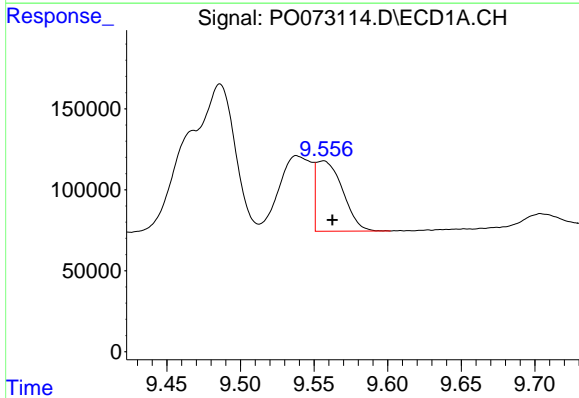
R.T.: 9.486 min
Delta R.T.: 0.020 min
Response: 2076708
Conc: 293.04 ng/ml

Instrument :
ECD_O
ClientSampled :



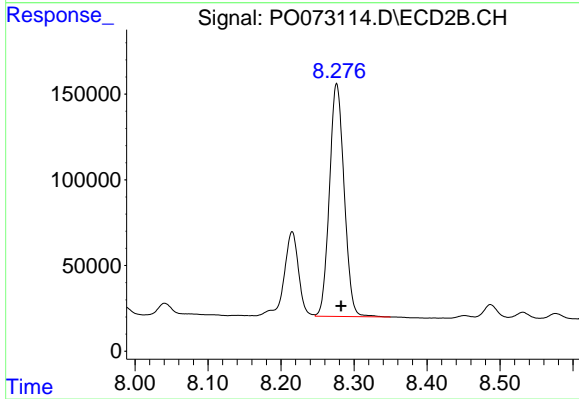
#41 AR-1268-1

R.T.: 8.215 min
Delta R.T.: -0.003 min
Response: 666015
Conc: 117.14 ng/ml



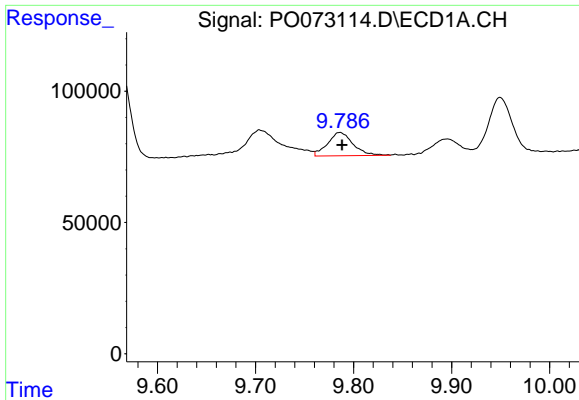
#42 AR-1268-2

R.T.: 9.556 min
Delta R.T.: -0.006 min
Response: 544957
Conc: 84.11 ng/ml



#42 AR-1268-2

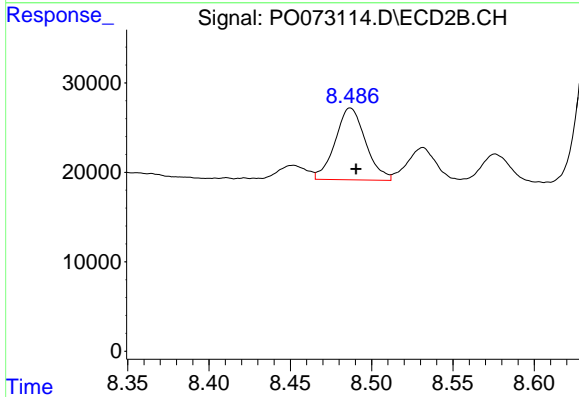
R.T.: 8.276 min
Delta R.T.: -0.006 min
Response: 1899435
Conc: 374.87 ng/ml



#43 AR-1268-3

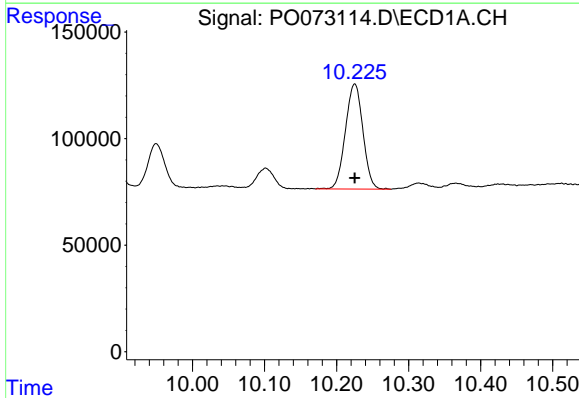
R.T.: 9.786 min
 Delta R.T.: -0.002 min
 Response: 160558
 Conc: 28.74 ng/ml

Instrument :
 ECD_O
 ClientSampled :



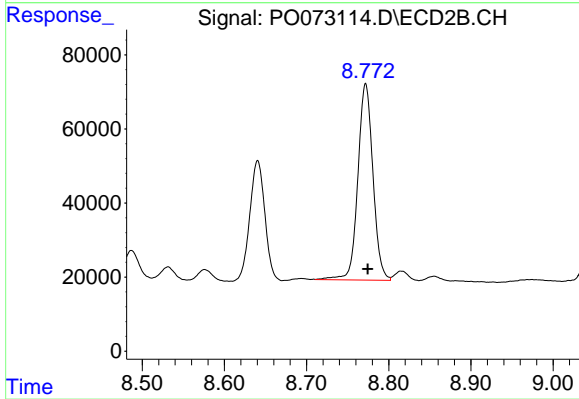
#43 AR-1268-3

R.T.: 8.487 min
 Delta R.T.: -0.003 min
 Response: 104453
 Conc: 23.71 ng/ml



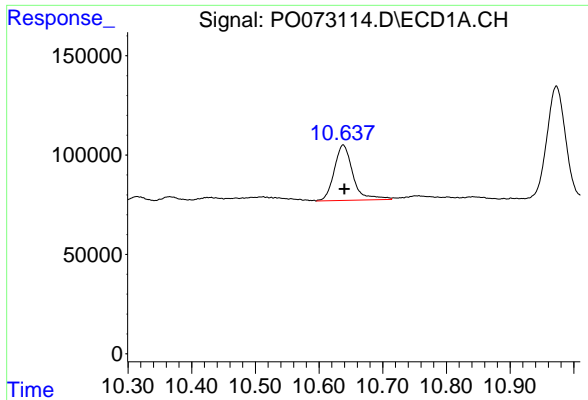
#44 AR-1268-4

R.T.: 10.225 min
 Delta R.T.: 0.000 min
 Response: 830010
 Conc: 357.91 ng/ml



#44 AR-1268-4

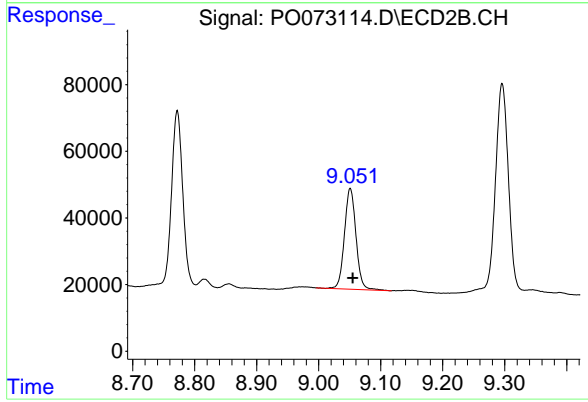
R.T.: 8.772 min
 Delta R.T.: -0.003 min
 Response: 675586
 Conc: 350.85 ng/ml



#45 AR-1268-5

R.T.: 10.638 min
Delta R.T.: -0.002 min
Response: 567780
Conc: 35.11 ng/ml

Instrument :
ECD_O
ClientSampleId :



#45 AR-1268-5

R.T.: 9.051 min
Delta R.T.: -0.004 min
Response: 391670
Conc: 30.09 ng/ml