

Data Path : Z:\pestpcbsrv\HPCHEM1\ECD\_0\Data\P0110719\  
 Data File : P0063553.D  
 Signal(s) : Signal #1: ECD1A.CH Signal #2: ECD2B.CH  
 Acq On : 07 Nov 2019 17:57  
 Operator : SM/AJ  
 Sample : K5722-02  
 Misc :  
 ALS Vial : 7 Sample Multiplier: 1

Instrument :  
 ECD\_0  
 ClientSampled :  
 4-B

Integration File signal 1: autoint1.e  
 Integration File signal 2: autoint2.e  
 Quant Time: Nov 08 02:42:29 2019  
 Quant Method : Z:\pestpcbsrv\HPCHEM1\ECD\_0\methods\P0110719.M  
 Quant Title : GC EXTRACTABLES  
 QLast Update : Fri Nov 08 02:28:58 2019  
 Response via : Initial Calibration  
 Integrator: ChemStation 6890 Scale Mode: Small noise peaks clipped

Volume Inj. : 2 µl  
 Signal #1 Phase : ZB-MR1 Signal #2 Phase: ZB-MR2  
 Signal #1 Info : 30Mx0.32mmx 0.50µ Signal #2 Info : 30M x 0.32mm x 0.25µm

Compound	RT#1	RT#2	Resp#1	Resp#2	ng/ml	ng/ml
-----						
System Monitoring Compounds						
1) SA Tetrachlo...	4.325	3.578	656985	449090	19.854	21.271
2) SA Decachlor...	9.953	8.555	868906	526502	15.835	17.762
Target Compounds						
3) L1 AR-1016-1	5.486	4.658	55367	32534	39.905	38.625
4) L1 AR-1016-2	5.507	4.677	86345	41330	42.769	36.267
5) L1 AR-1016-3	5.569	0.000	42696	0	33.644	N.D. #
6) L1 AR-1016-4	5.667	0.000	42411	0	40.936	N.D. #
7) L1 AR-1016-5	5.958	0.000	56357	0	50.577	N.D. #
10) L2 AR-1221-3	0.000	3.994	0	236474	N.D.	440.025 #
11) L3 AR-1232-1	0.000	3.994	0	236474	N.D.	318.356 #
12) L3 AR-1232-2	5.219	4.677	56656	41330	86.794	50.210 #
13) L3 AR-1232-3	5.507	0.000	86345	0	61.067	N.D. #
14) L3 AR-1232-4	5.667	0.000	42411	0	59.153	N.D. #
15) L3 AR-1232-5	5.758	0.000	49700	0	88.950	N.D. #
16) L4 AR-1242-1	5.486	4.658	55367	32534	56.038	53.947
17) L4 AR-1242-2	5.507	4.677	86345	41330	59.997	49.841
18) L4 AR-1242-3	5.569	0.000	42696	0	46.798	N.D. #
19) L4 AR-1242-4	5.667	0.000	42411	0	57.221	N.D. #
20) L4 AR-1242-5	6.398	5.455	81914	61994	85.002	101.841
21) L5 AR-1248-1	5.486	4.658	55367	32534	68.467	66.042
22) L5 AR-1248-2	5.758	0.000	49700	0	40.984	N.D. #
23) L5 AR-1248-3	5.958	0.000	56357	0	40.434	N.D. #
24) L5 AR-1248-4	6.362	0.000	72289	0	42.406	N.D. #
25) L5 AR-1248-5	6.398	5.496	81914	34690	49.800	37.964
26) L6 AR-1254-1	6.331	5.455	130820	61994	76.994	44.245 #
27) L6 AR-1254-2	6.553	5.669	85909	67273	31.081	53.300 #
28) L6 AR-1254-3	6.917	6.004	171619	119915	53.966	55.609
29) L6 AR-1254-4	7.200	0.000	72996	0	29.692	N.D. #
30) L6 AR-1254-5	7.616	6.647	403857	200758	144.726	103.296 #
31) L7 AR-1260-1	7.078	6.133	307041	143108	127.760	101.175
32) L7 AR-1260-2	7.333	6.319	204822	144353	67.811	81.610
33) L7 AR-1260-3	7.691	6.474	185695	97786	80.244	60.187
34) L7 AR-1260-4	7.914	6.945	299884	100247	108.059	71.057 #
35) L7 AR-1260-5	8.227	7.184	422668	265184	76.181	78.718
36) L8 AR-1262-1	7.691	6.738	185695	58422	58.105	74.334 #
37) L8 AR-1262-2	8.227	7.184	422668	265184	70.544	74.909
38) L8 AR-1262-3	8.540	7.468	373466	56552	92.581	40.723 #
39) L8 AR-1262-4	8.613	7.531	93001	211358	30.724	80.716 #
40) L8 AR-1262-5	9.242	8.023	107424	69808	53.112	60.991
41) L9 AR-1268-1	8.540	7.468	373466	56552	53.783	13.916 #
42) L9 AR-1268-2	8.613	7.531	93001	211358	14.649	57.365 #
44) L9 AR-1268-4	9.242	8.023	107424	69808	48.020	54.457
-----						

Data Path : Z:\pestpcbsrv\HPCHEM1\ECD\_0\Data\P0110719\  
Data File : P0063553.D  
Signal(s) : Signal #1: ECD1A.CH Signal #2: ECD2B.CH  
Acq On : 07 Nov 2019 17:57  
Operator : SM/AJ  
Sample : K5722-02  
Misc :  
ALS Vial : 7 Sample Multiplier: 1

Instrument :  
ECD\_0  
ClientSampleId :  
4-B

Integration File signal 1: autoint1.e  
Integration File signal 2: autoint2.e  
Quant Time: Nov 08 02:42:29 2019  
Quant Method : Z:\pestpcbsrv\HPCHEM1\ECD\_0\methods\P0110719.M  
Quant Title : GC EXTRACTABLES  
QLast Update : Fri Nov 08 02:28:58 2019  
Response via : Initial Calibration  
Integrator: ChemStation 6890 Scale Mode: Small noise peaks clipped

Volume Inj. : 2 µl  
Signal #1 Phase : ZB-MR1 Signal #2 Phase: ZB-MR2  
Signal #1 Info : 30Mx0.32mmx 0.50µ Signal #2 Info : 30M x 0.32mm x 0.25µm

Compound	RT#1	RT#2	Resp#1	Resp#2	ng/ml	ng/ml
----------	------	------	--------	--------	-------	-------

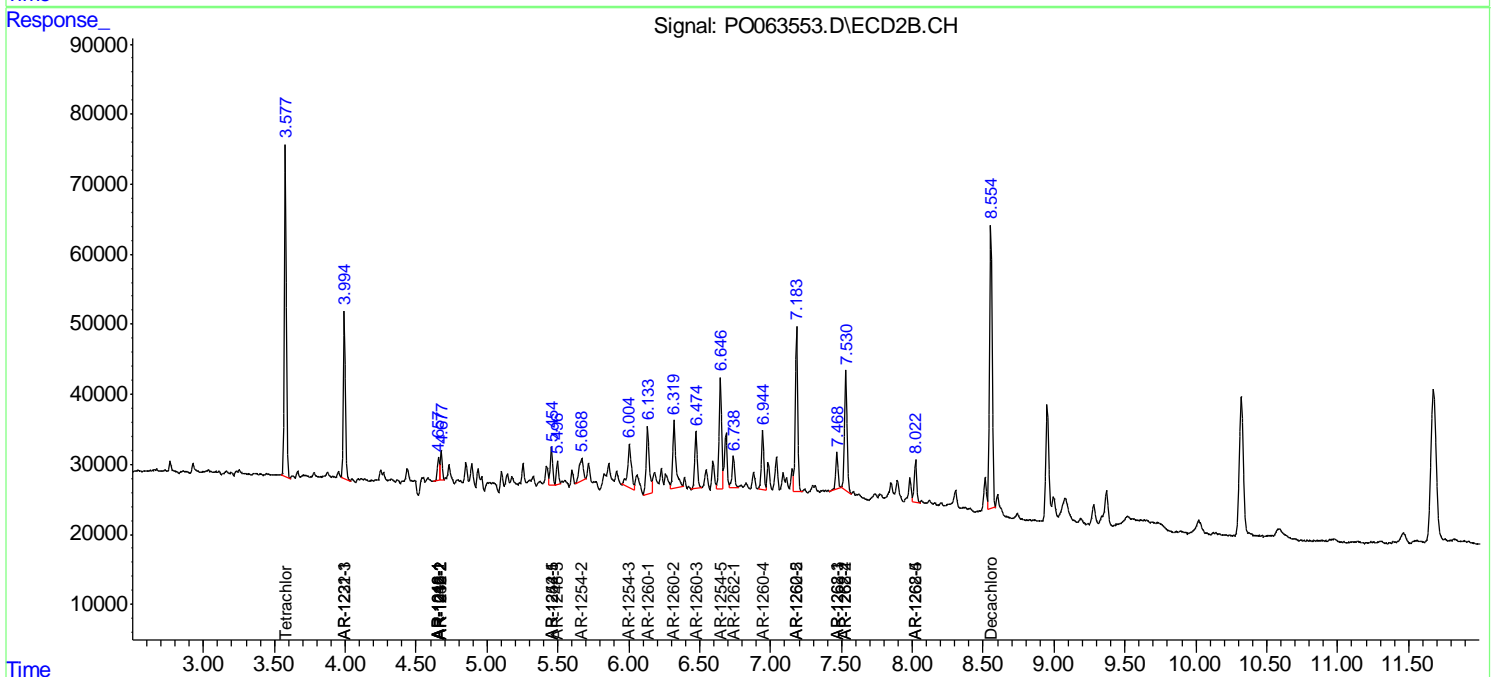
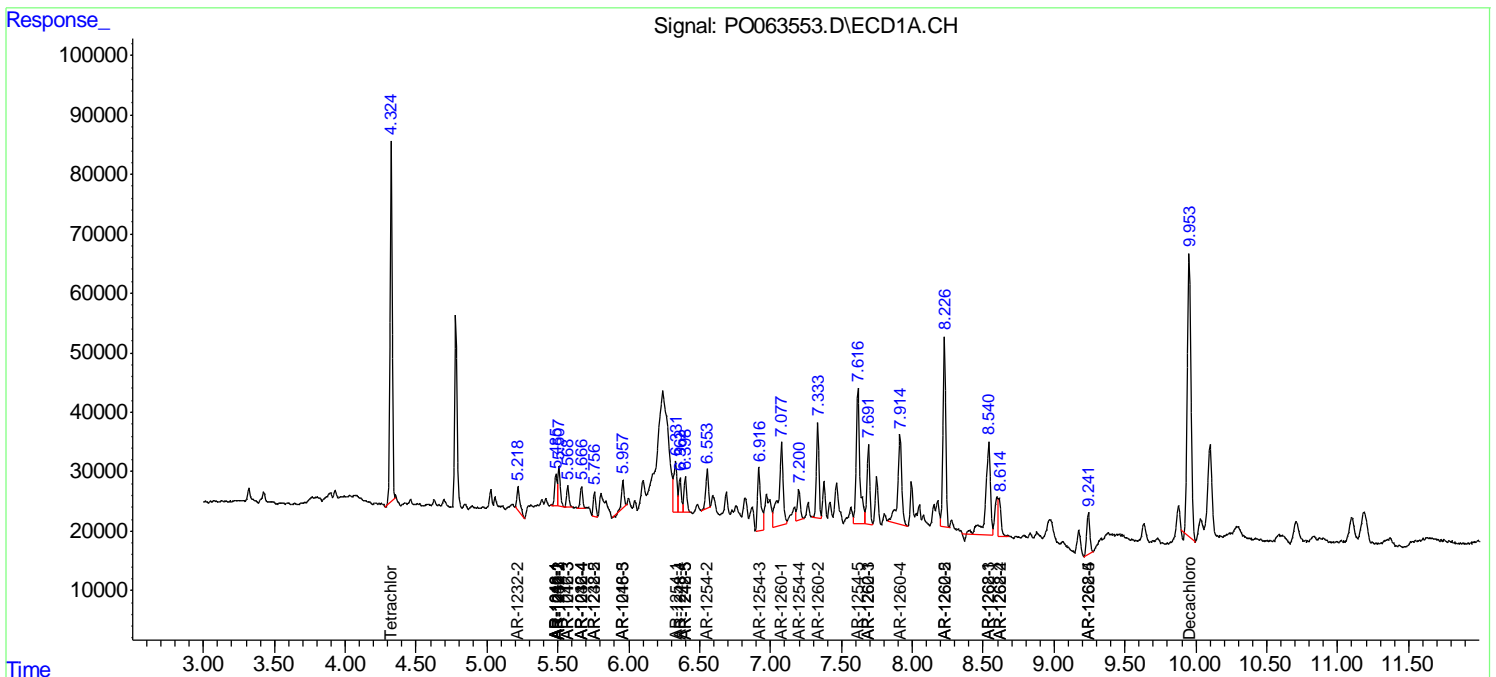
(f)=RT Delta > 1/2 Window (#)=Amounts differ by > 25% (m)=manual int.

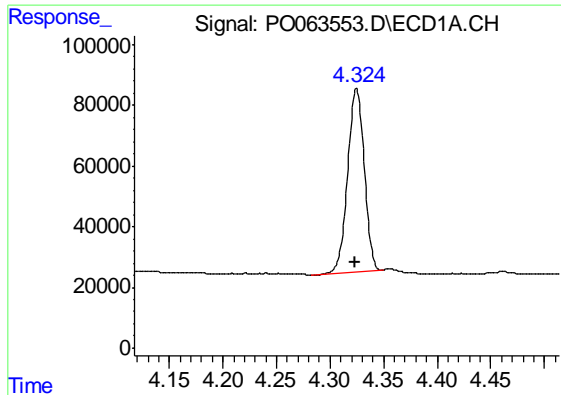
Data Path : Z:\pestpcbsrv\HPCHEM1\ECD\_O\Data\PO110719\  
 Data File : PO063553.D  
 Signal(s) : Signal #1: ECD1A.CH Signal #2: ECD2B.CH  
 Acq On : 07 Nov 2019 17:57  
 Operator : SM/AJ  
 Sample : K5722-02  
 Misc :  
 ALS Vial : 7 Sample Multiplier: 1

Instrument :  
 ECD\_O  
 Client Sampled :  
 4-B

Integration File signal 1: autoint1.e  
 Integration File signal 2: autoint2.e  
 Quant Time: Nov 08 02:42:29 2019  
 Quant Method : Z:\pestpcbsrv\HPCHEM1\ECD\_O\methods\PO110719.M  
 Quant Title : GC EXTRACTABLES  
 QLast Update : Fri Nov 08 02:28:58 2019  
 Response via : Initial Calibration  
 Integrator: ChemStation 6890 Scale Mode: Small noise peaks clipped

Volume Inj. : 2 µl  
 Signal #1 Phase : ZB-MR1 Signal #2 Phase: ZB-MR2  
 Signal #1 Info : 30Mx0.32mmx 0.50µ Signal #2 Info : 30M x 0.32mm x 0.25µm

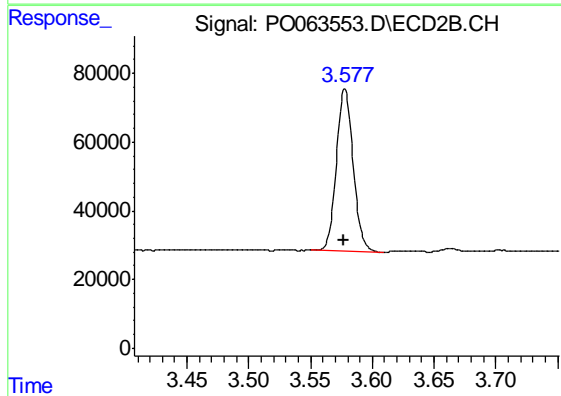




#1 Tetrachloro-m-xylene

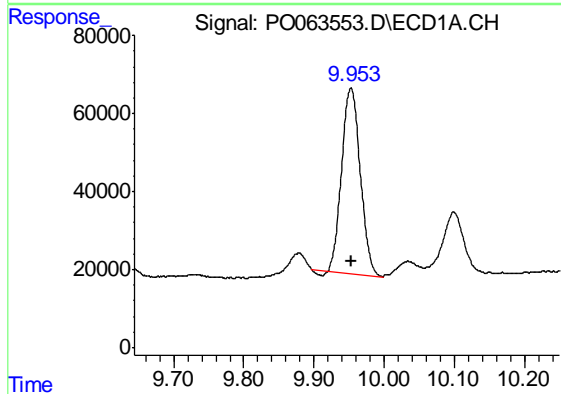
R.T.: 4.325 min  
 Delta R.T.: 0.000 min  
 Response: 656985  
 Conc: 19.85 ng/ml

Instrument :  
 ECD\_O  
 ClientSampled :  
 4-B



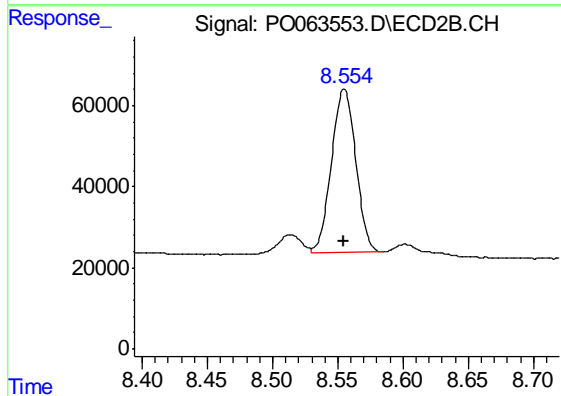
#1 Tetrachloro-m-xylene

R.T.: 3.578 min  
 Delta R.T.: 0.000 min  
 Response: 449090  
 Conc: 21.27 ng/ml



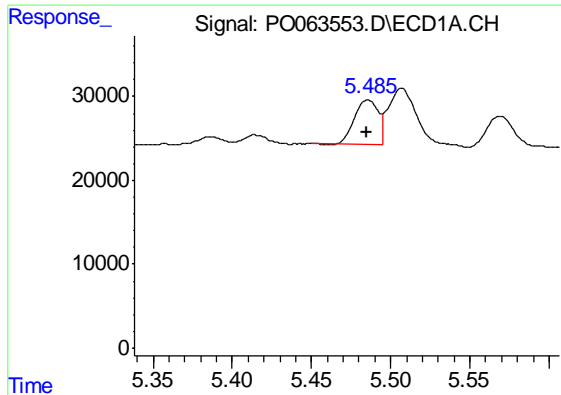
#2 Decachlorobiphenyl

R.T.: 9.953 min  
 Delta R.T.: 0.000 min  
 Response: 868906  
 Conc: 15.84 ng/ml



#2 Decachlorobiphenyl

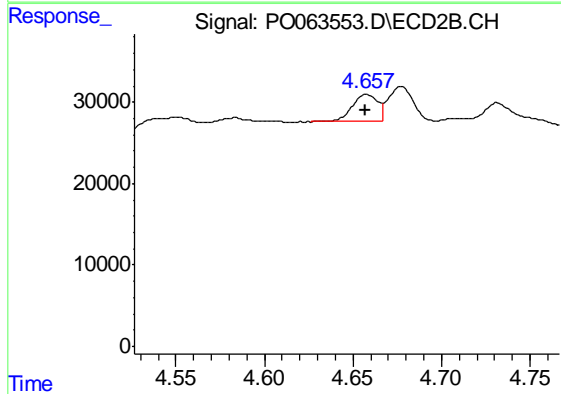
R.T.: 8.555 min  
 Delta R.T.: 0.000 min  
 Response: 526502  
 Conc: 17.76 ng/ml



#3 AR-1016-1

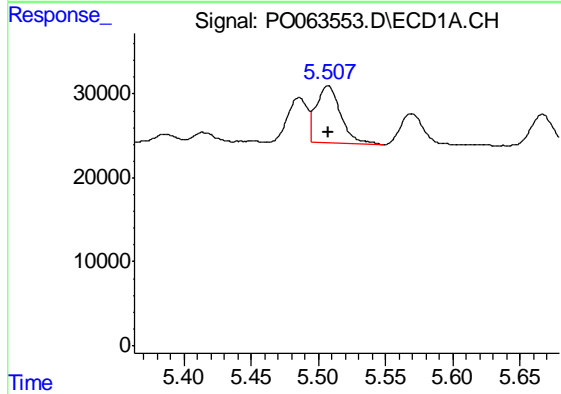
R.T.: 5.486 min  
 Delta R.T.: 0.000 min  
 Response: 55367  
 Conc: 39.90 ng/ml

Instrument :  
 ECD\_O  
 ClientSampled :  
 4-B



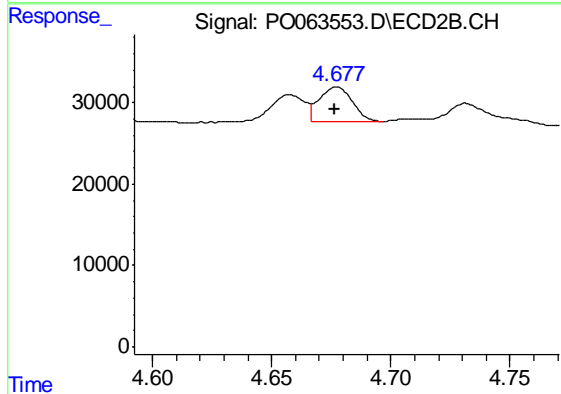
#3 AR-1016-1

R.T.: 4.658 min  
 Delta R.T.: 0.000 min  
 Response: 32534  
 Conc: 38.63 ng/ml



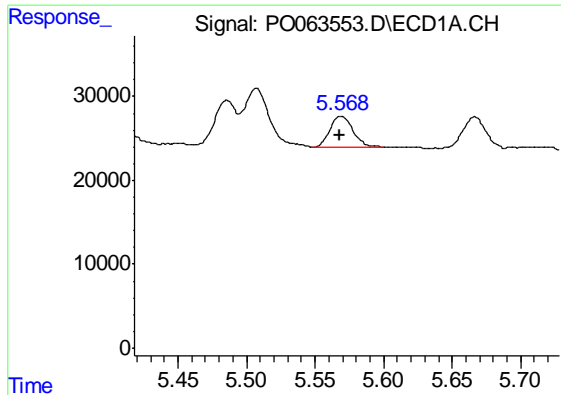
#4 AR-1016-2

R.T.: 5.507 min  
 Delta R.T.: 0.000 min  
 Response: 86345  
 Conc: 42.77 ng/ml



#4 AR-1016-2

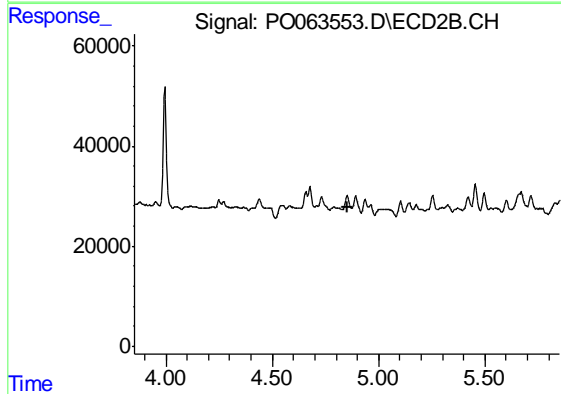
R.T.: 4.677 min  
 Delta R.T.: 0.000 min  
 Response: 41330  
 Conc: 36.27 ng/ml



#5 AR-1016-3

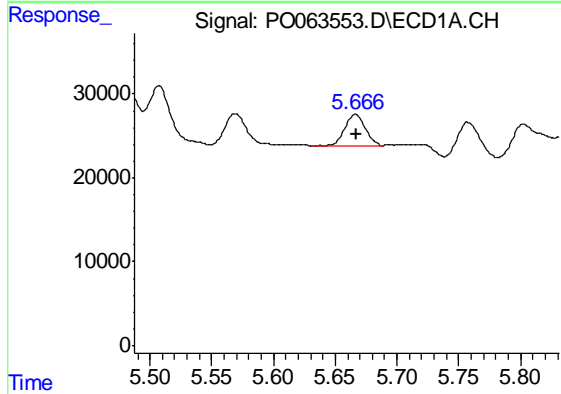
R.T.: 5.569 min  
 Delta R.T.: 0.000 min  
 Response: 42696  
 Conc: 33.64 ng/ml

Instrument :  
 ECD\_O  
 ClientSampled :  
 4-B



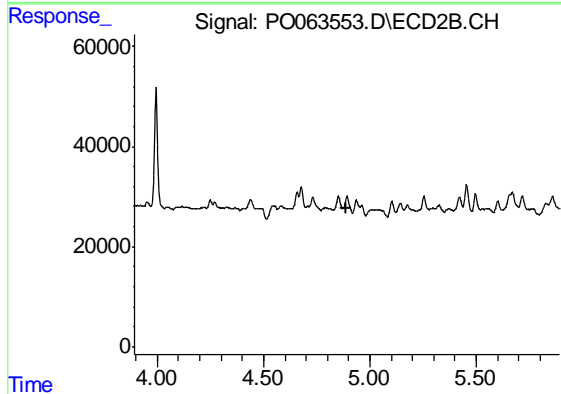
#5 AR-1016-3

R.T.: 0.000 min  
 Exp R.T. : 4.851 min  
 Response: 0  
 Conc: N.D.



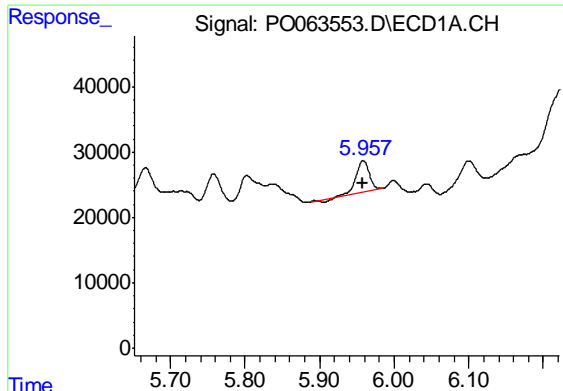
#6 AR-1016-4

R.T.: 5.667 min  
 Delta R.T.: 0.000 min  
 Response: 42411  
 Conc: 40.94 ng/ml



#6 AR-1016-4

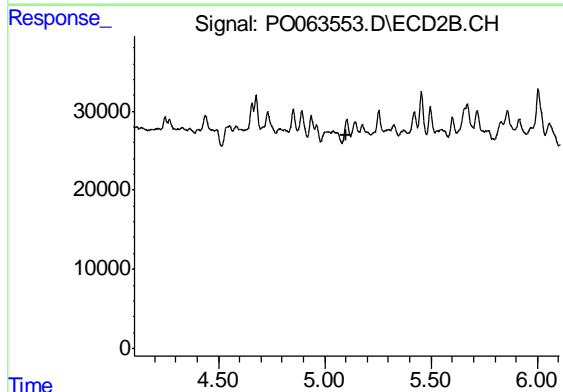
R.T.: 0.000 min  
 Exp R.T. : 4.892 min  
 Response: 0  
 Conc: N.D.



#7 AR-1016-5

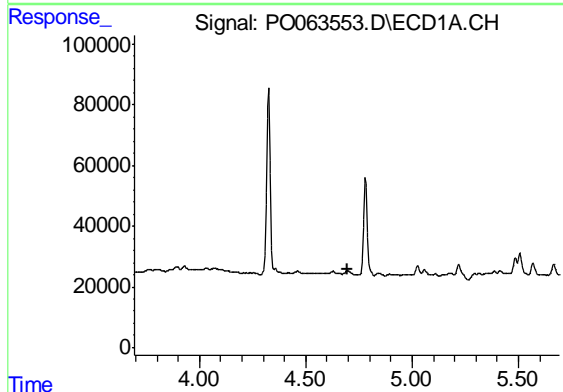
R.T.: 5.958 min  
 Delta R.T.: 0.000 min  
 Response: 56357  
 Conc: 50.58 ng/ml

Instrument :  
 ECD\_O  
 ClientSampled :  
 4-B



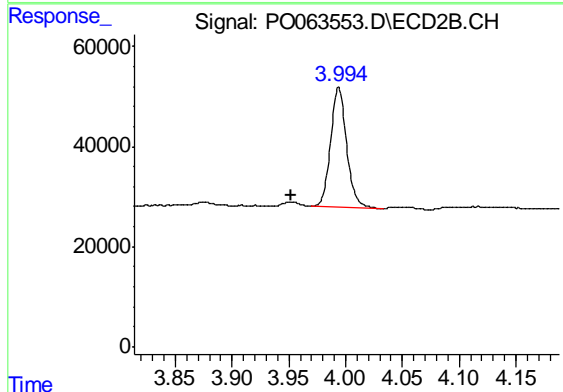
#7 AR-1016-5

R.T.: 0.000 min  
 Exp R.T. : 5.104 min  
 Response: 0  
 Conc: N.D.



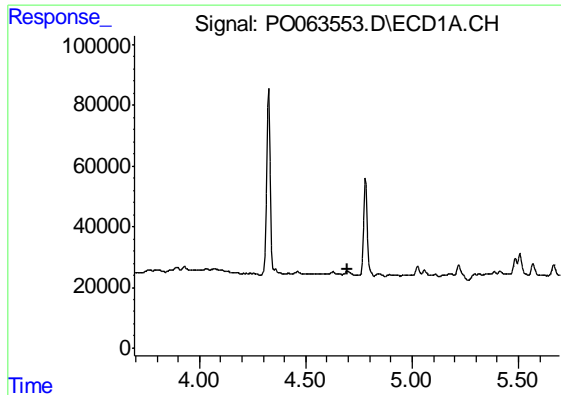
#10 AR-1221-3

R.T.: 0.000 min  
 Exp R.T. : 4.694 min  
 Response: 0  
 Conc: N.D.



#10 AR-1221-3

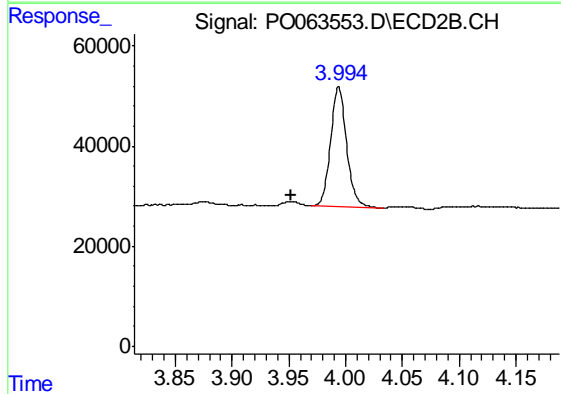
R.T.: 3.994 min  
 Delta R.T.: 0.041 min  
 Response: 236474  
 Conc: 440.03 ng/ml



#11 AR-1232-1

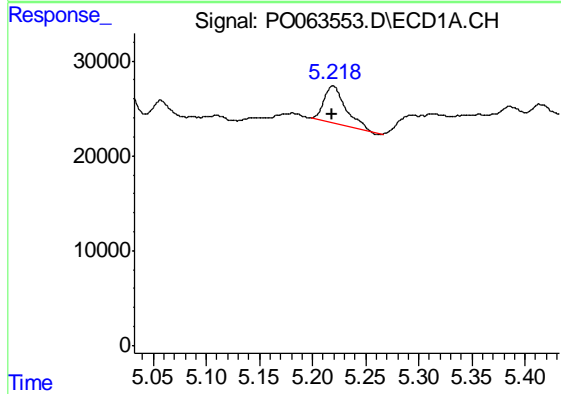
R.T.: 0.000 min  
 Exp R.T. : 4.694 min  
 Response: 0  
 Conc: N.D.

Instrument :  
 ECD\_O  
 ClientSampled :  
 4-B



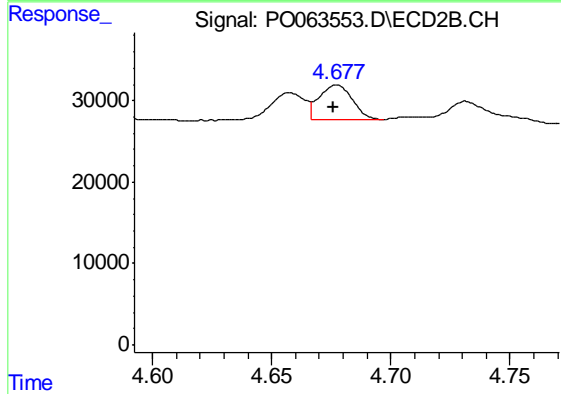
#11 AR-1232-1

R.T.: 3.994 min  
 Delta R.T.: 0.042 min  
 Response: 236474  
 Conc: 318.36 ng/ml



#12 AR-1232-2

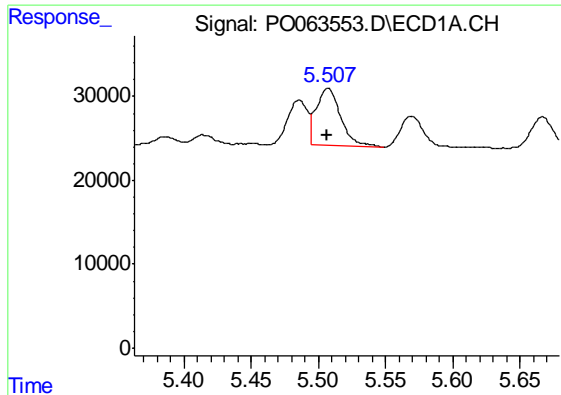
R.T.: 5.219 min  
 Delta R.T.: 0.000 min  
 Response: 56656  
 Conc: 86.79 ng/ml



#12 AR-1232-2

R.T.: 4.677 min  
 Delta R.T.: 0.001 min  
 Response: 41330  
 Conc: 50.21 ng/ml

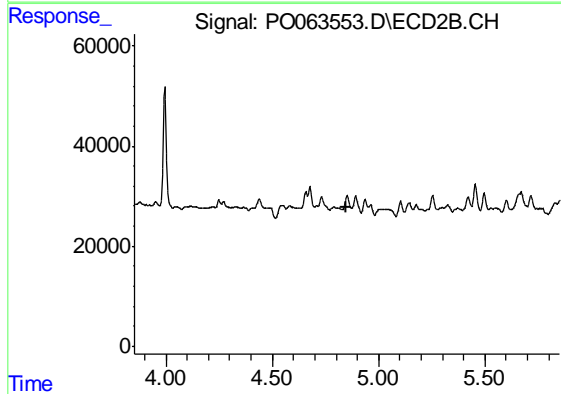




#13 AR-1232-3

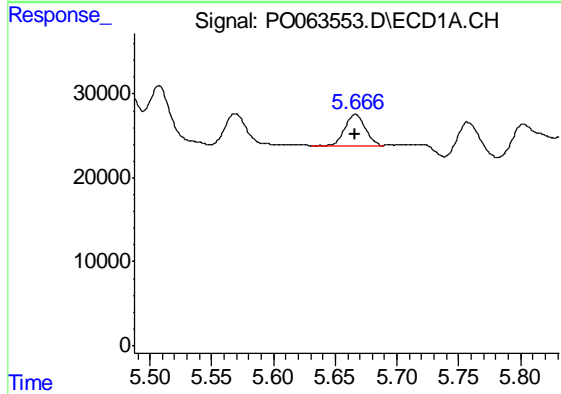
R.T.: 5.507 min  
 Delta R.T.: 0.000 min  
 Response: 86345  
 Conc: 61.07 ng/ml

Instrument :  
 ECD\_O  
 ClientSampled :  
 4-B



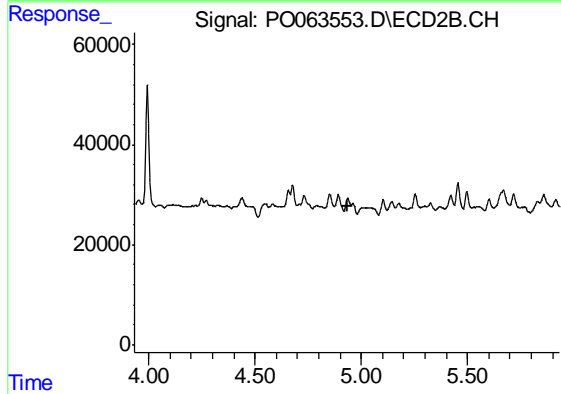
#13 AR-1232-3

R.T.: 0.000 min  
 Exp R.T. : 4.851 min  
 Response: 0  
 Conc: N.D.



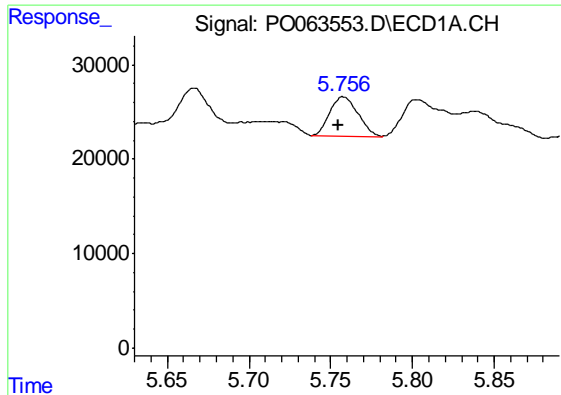
#14 AR-1232-4

R.T.: 5.667 min  
 Delta R.T.: 0.000 min  
 Response: 42411  
 Conc: 59.15 ng/ml



#14 AR-1232-4

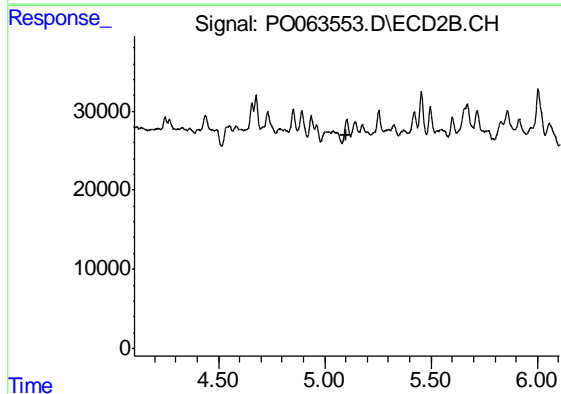
R.T.: 0.000 min  
 Exp R.T. : 4.933 min  
 Response: 0  
 Conc: N.D.



#15 AR-1232-5

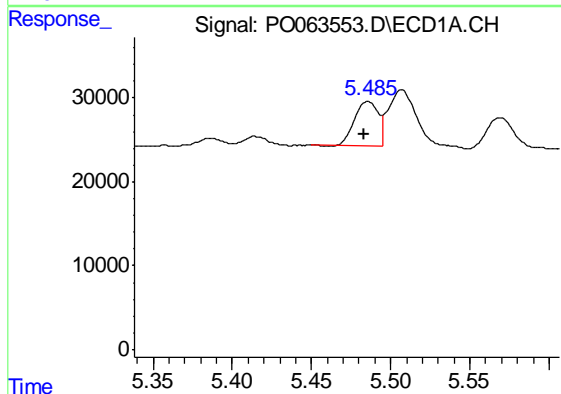
R.T.: 5.758 min  
 Delta R.T.: 0.003 min  
 Response: 49700  
 Conc: 88.95 ng/ml

Instrument :  
 ECD\_O  
 ClientSampled :  
 4-B



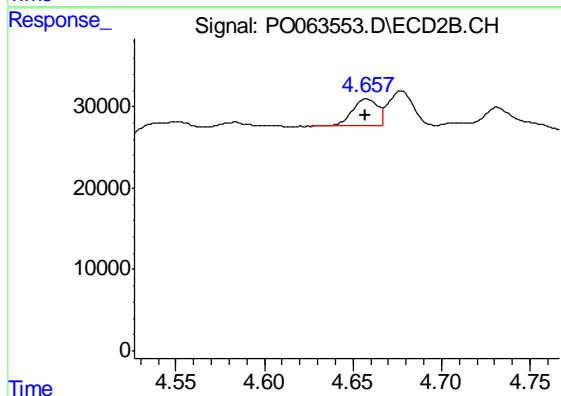
#15 AR-1232-5

R.T.: 0.000 min  
 Exp R.T. : 5.104 min  
 Response: 0  
 Conc: N.D.



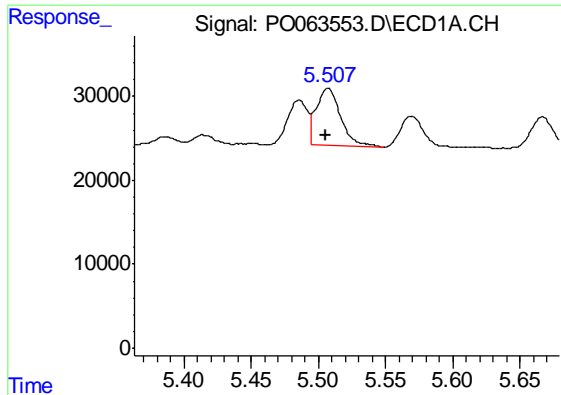
#16 AR-1242-1

R.T.: 5.486 min  
 Delta R.T.: 0.002 min  
 Response: 55367  
 Conc: 56.04 ng/ml



#16 AR-1242-1

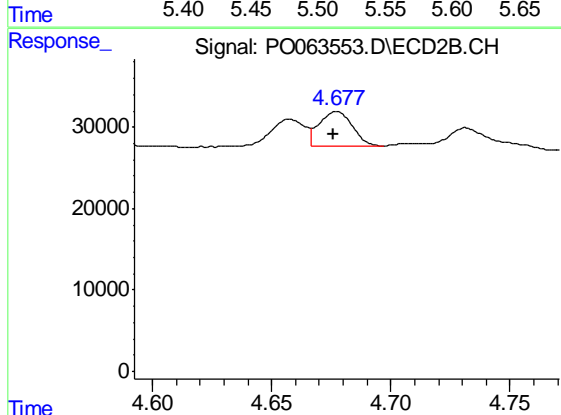
R.T.: 4.658 min  
 Delta R.T.: 0.000 min  
 Response: 32534  
 Conc: 53.95 ng/ml



#17 AR-1242-2

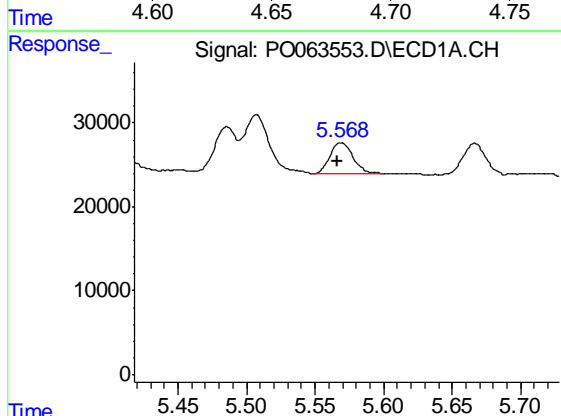
R.T.: 5.507 min  
 Delta R.T.: 0.002 min  
 Response: 86345  
 Conc: 60.00 ng/ml

Instrument :  
 ECD\_O  
 ClientSampled :  
 4-B



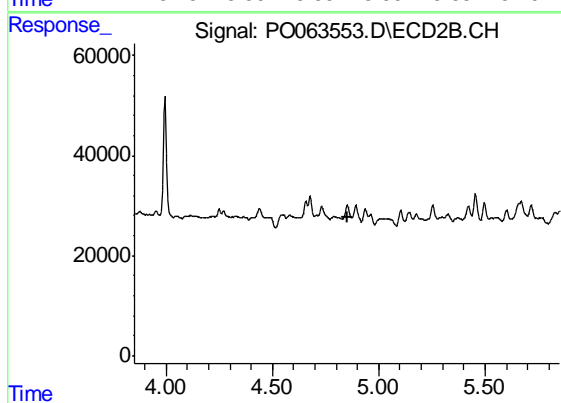
#17 AR-1242-2

R.T.: 4.677 min  
 Delta R.T.: 0.001 min  
 Response: 41330  
 Conc: 49.84 ng/ml



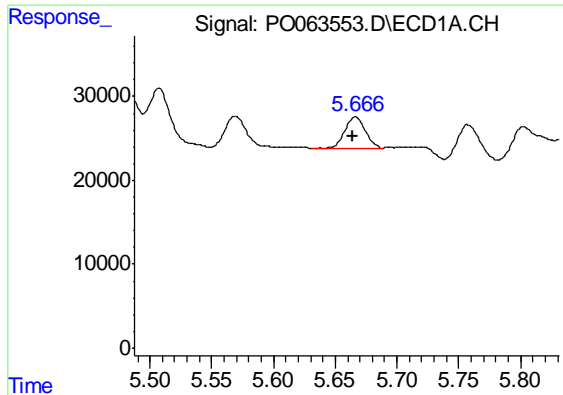
#18 AR-1242-3

R.T.: 5.569 min  
 Delta R.T.: 0.002 min  
 Response: 42696  
 Conc: 46.80 ng/ml



#18 AR-1242-3

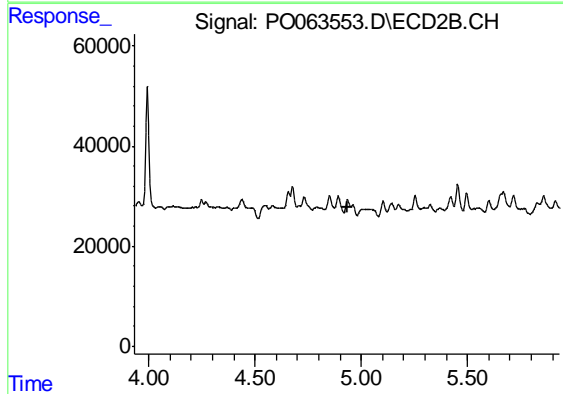
R.T.: 0.000 min  
 Exp R.T. : 4.851 min  
 Response: 0  
 Conc: N.D.



#19 AR-1242-4

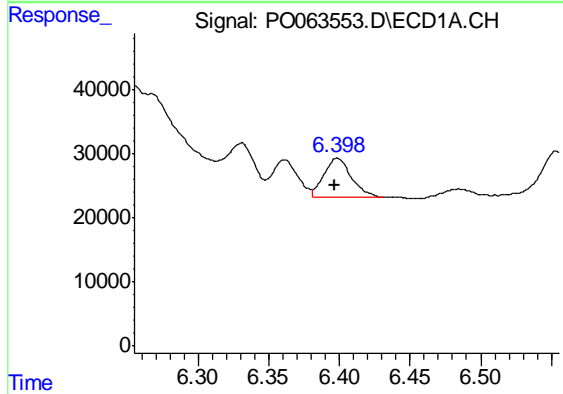
R.T.: 5.667 min  
 Delta R.T.: 0.002 min  
 Response: 42411  
 Conc: 57.22 ng/ml

Instrument :  
 ECD\_O  
 ClientSampled :  
 4-B



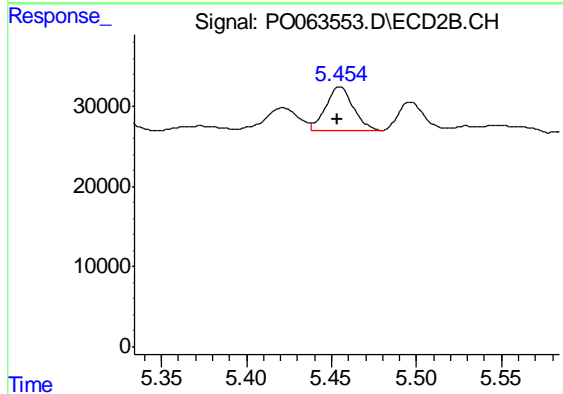
#19 AR-1242-4

R.T.: 0.000 min  
 Exp R.T. : 4.933 min  
 Response: 0  
 Conc: N.D.



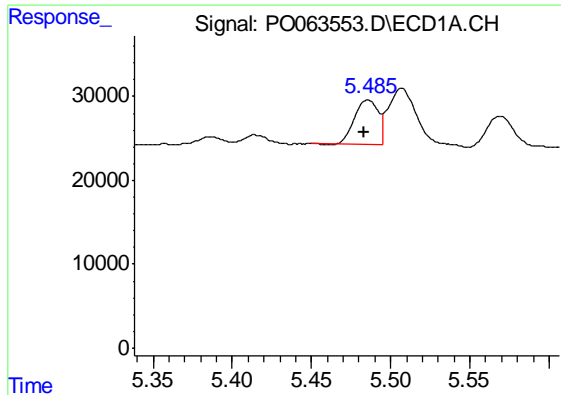
#20 AR-1242-5

R.T.: 6.398 min  
 Delta R.T.: 0.002 min  
 Response: 81914  
 Conc: 85.00 ng/ml



#20 AR-1242-5

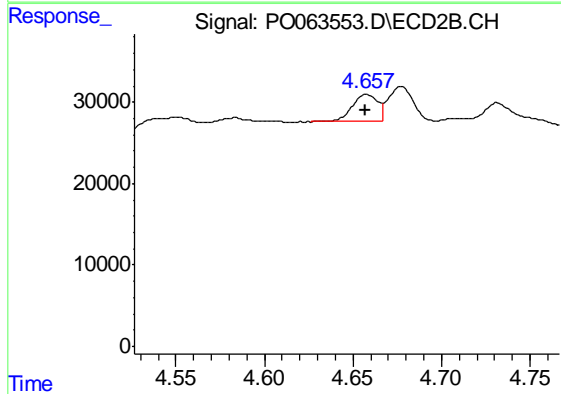
R.T.: 5.455 min  
 Delta R.T.: 0.002 min  
 Response: 61994  
 Conc: 101.84 ng/ml



#21 AR-1248-1

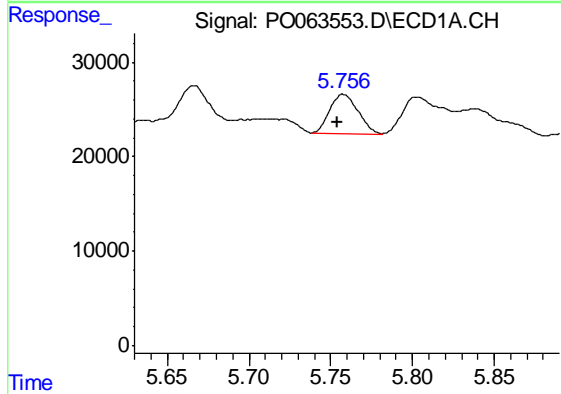
R.T.: 5.486 min  
 Delta R.T.: 0.002 min  
 Response: 55367  
 Conc: 68.47 ng/ml

Instrument :  
 ECD\_O  
 ClientSampled :  
 4-B



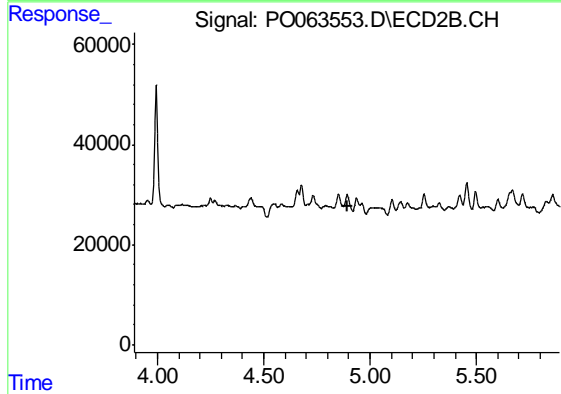
#21 AR-1248-1

R.T.: 4.658 min  
 Delta R.T.: 0.000 min  
 Response: 32534  
 Conc: 66.04 ng/ml



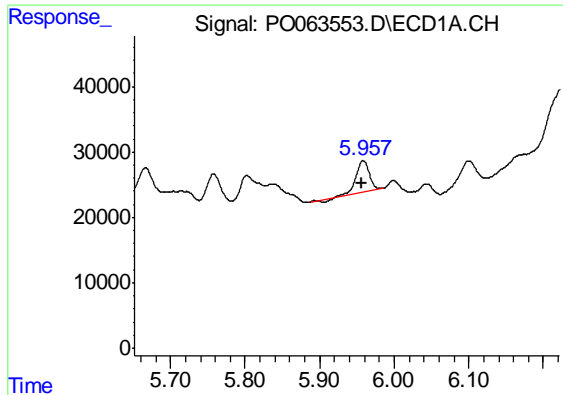
#22 AR-1248-2

R.T.: 5.758 min  
 Delta R.T.: 0.003 min  
 Response: 49700  
 Conc: 40.98 ng/ml



#22 AR-1248-2

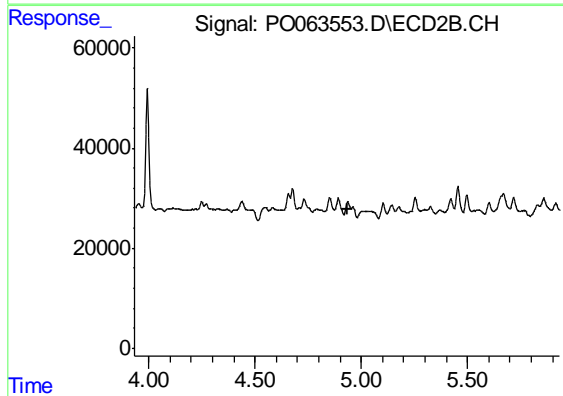
R.T.: 0.000 min  
 Exp R.T. : 4.892 min  
 Response: 0  
 Conc: N.D.



#23 AR-1248-3

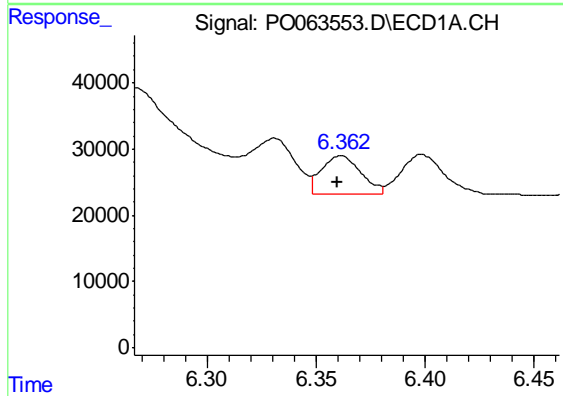
R.T.: 5.958 min  
 Delta R.T.: 0.001 min  
 Response: 56357  
 Conc: 40.43 ng/ml

Instrument :  
 ECD\_O  
 ClientSampled :  
 4-B



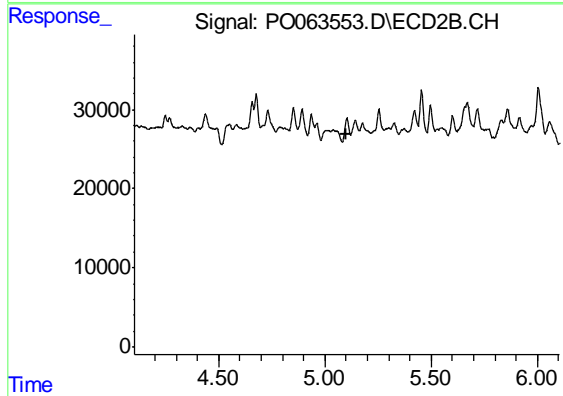
#23 AR-1248-3

R.T.: 0.000 min  
 Exp R.T. : 4.933 min  
 Response: 0  
 Conc: N.D.



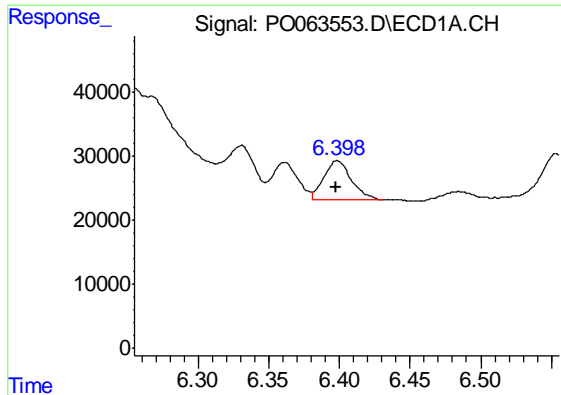
#24 AR-1248-4

R.T.: 6.362 min  
 Delta R.T.: 0.002 min  
 Response: 72289  
 Conc: 42.41 ng/ml



#24 AR-1248-4

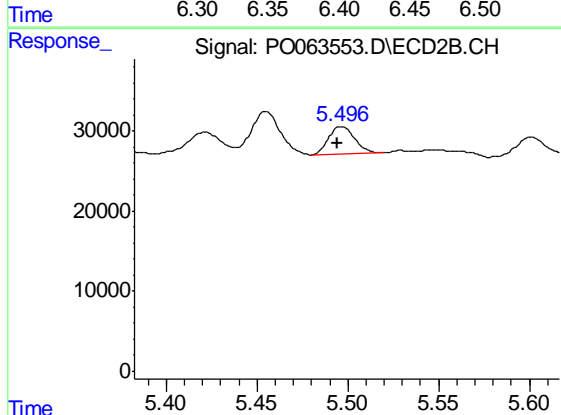
R.T.: 0.000 min  
 Exp R.T. : 5.104 min  
 Response: 0  
 Conc: N.D.



#25 AR-1248-5

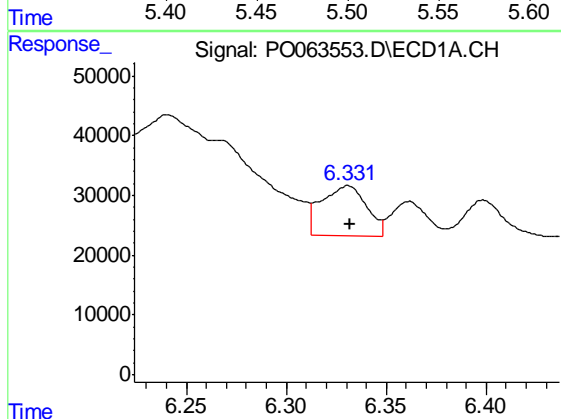
R.T.: 6.398 min  
 Delta R.T.: 0.000 min  
 Response: 81914  
 Conc: 49.80 ng/ml

Instrument :  
 ECD\_O  
 ClientSampled :  
 4-B



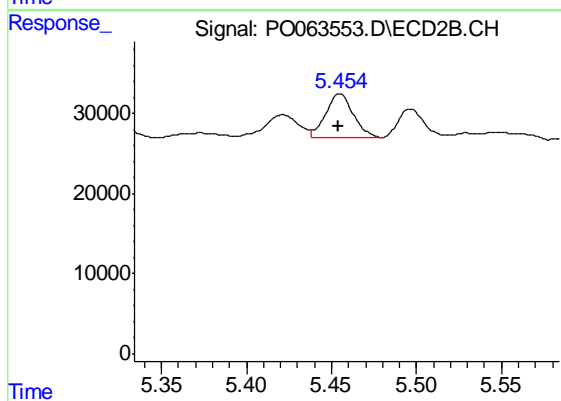
#25 AR-1248-5

R.T.: 5.496 min  
 Delta R.T.: 0.002 min  
 Response: 34690  
 Conc: 37.96 ng/ml



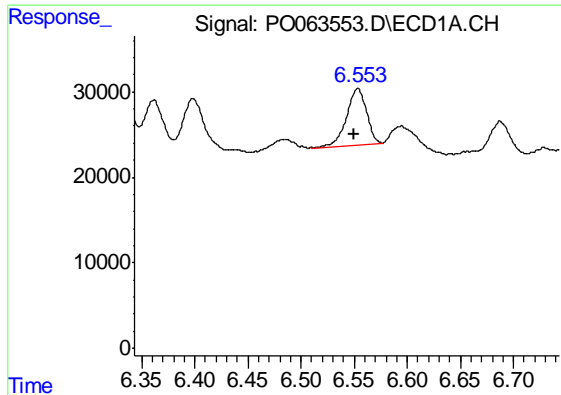
#26 AR-1254-1

R.T.: 6.331 min  
 Delta R.T.: -0.001 min  
 Response: 130820  
 Conc: 76.99 ng/ml



#26 AR-1254-1

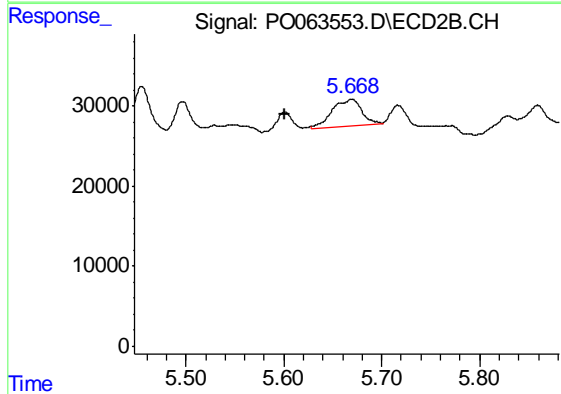
R.T.: 5.455 min  
 Delta R.T.: 0.000 min  
 Response: 61994  
 Conc: 44.24 ng/ml



#27 AR-1254-2

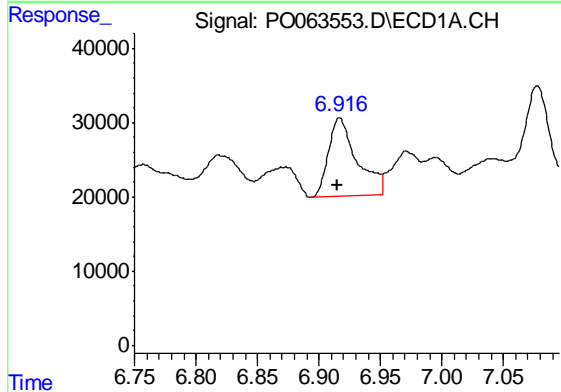
R.T.: 6.553 min  
 Delta R.T.: 0.003 min  
 Response: 85909  
 Conc: 31.08 ng/ml

Instrument :  
 ECD\_O  
 ClientSampled :  
 4-B



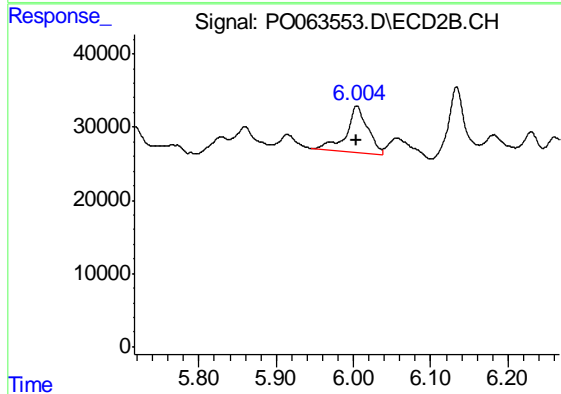
#27 AR-1254-2

R.T.: 5.669 min  
 Delta R.T.: 0.069 min  
 Response: 67273  
 Conc: 53.30 ng/ml



#28 AR-1254-3

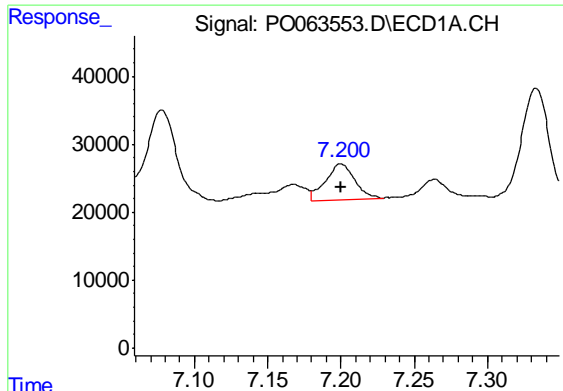
R.T.: 6.917 min  
 Delta R.T.: 0.002 min  
 Response: 171619  
 Conc: 53.97 ng/ml



#28 AR-1254-3

R.T.: 6.004 min  
 Delta R.T.: 0.000 min  
 Response: 119915  
 Conc: 55.61 ng/ml

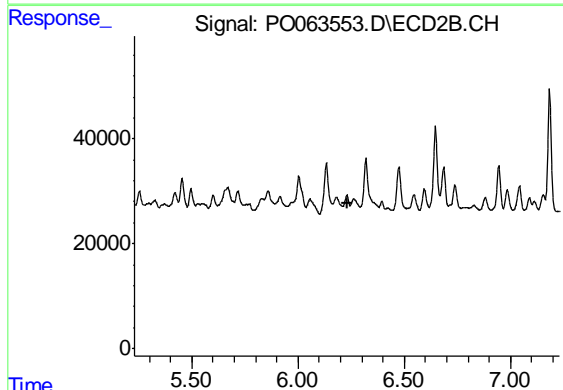




#29 AR-1254-4

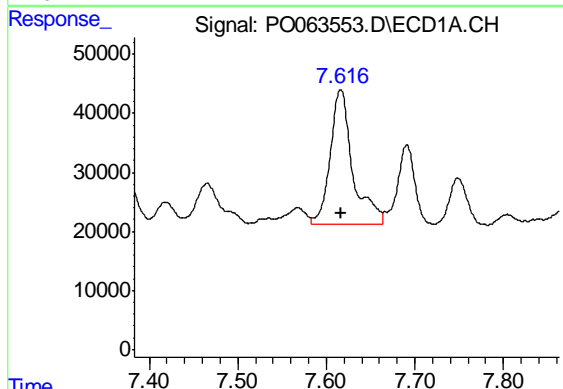
R.T.: 7.200 min  
 Delta R.T.: 0.000 min  
 Response: 72996  
 Conc: 29.69 ng/ml

Instrument :  
 ECD\_O  
 ClientSampleId :  
 4-B



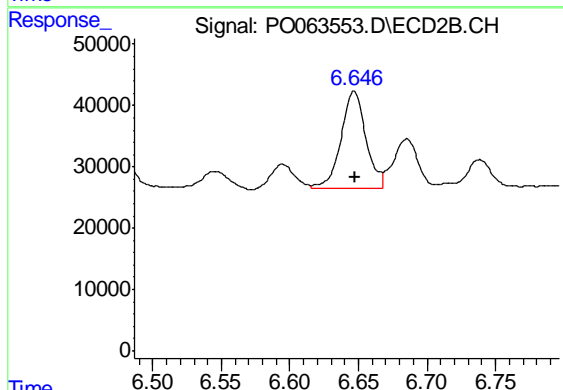
#29 AR-1254-4

R.T.: 0.000 min  
 Exp R.T. : 6.231 min  
 Response: 0  
 Conc: N.D.



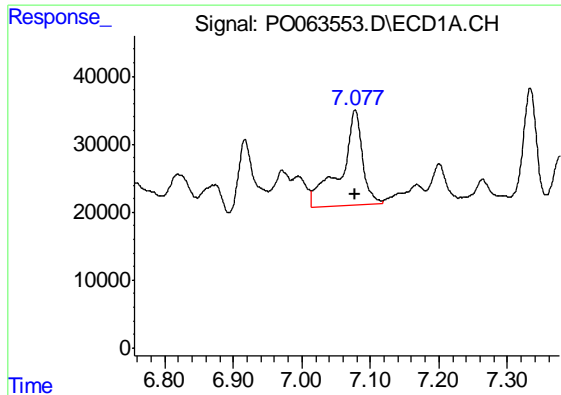
#30 AR-1254-5

R.T.: 7.616 min  
 Delta R.T.: 0.000 min  
 Response: 403857  
 Conc: 144.73 ng/ml



#30 AR-1254-5

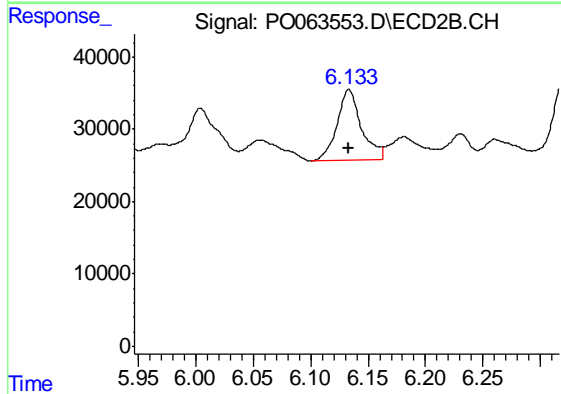
R.T.: 6.647 min  
 Delta R.T.: 0.000 min  
 Response: 200758  
 Conc: 103.30 ng/ml



#31 AR-1260-1

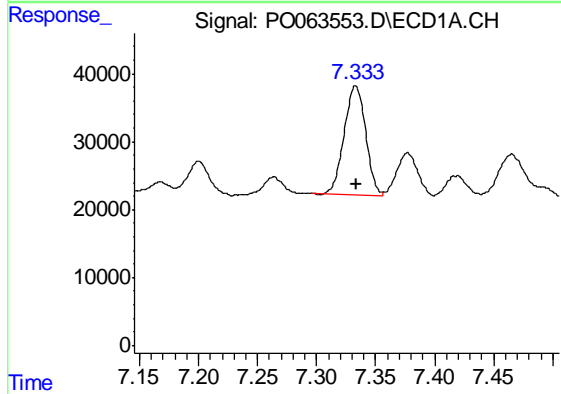
R.T.: 7.078 min  
 Delta R.T.: 0.000 min  
 Response: 307041  
 Conc: 127.76 ng/ml

Instrument :  
 ECD\_O  
 ClientSampled :  
 4-B



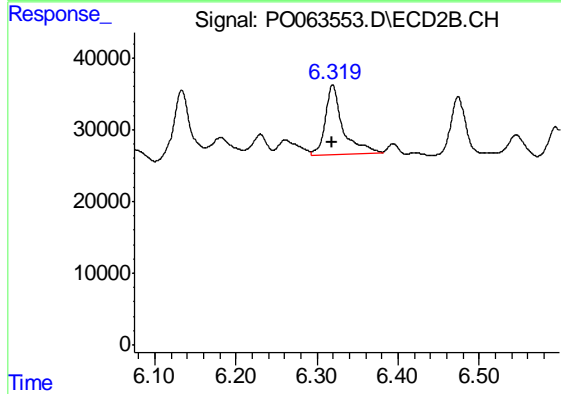
#31 AR-1260-1

R.T.: 6.133 min  
 Delta R.T.: 0.000 min  
 Response: 143108  
 Conc: 101.17 ng/ml



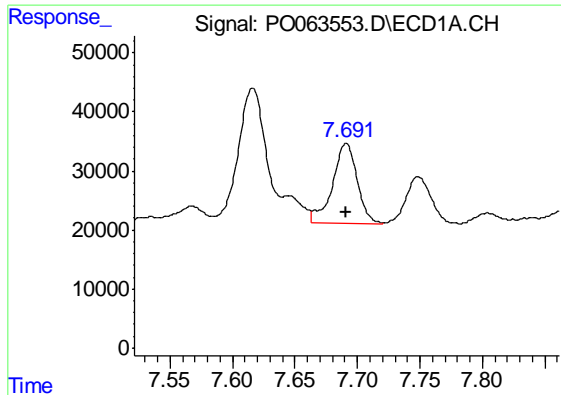
#32 AR-1260-2

R.T.: 7.333 min  
 Delta R.T.: 0.000 min  
 Response: 204822  
 Conc: 67.81 ng/ml



#32 AR-1260-2

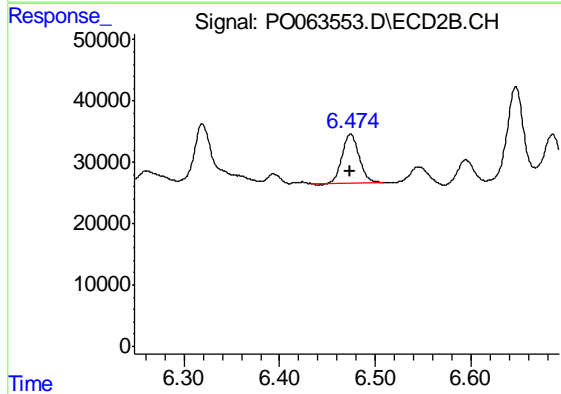
R.T.: 6.319 min  
 Delta R.T.: 0.000 min  
 Response: 144353  
 Conc: 81.61 ng/ml



#33 AR-1260-3

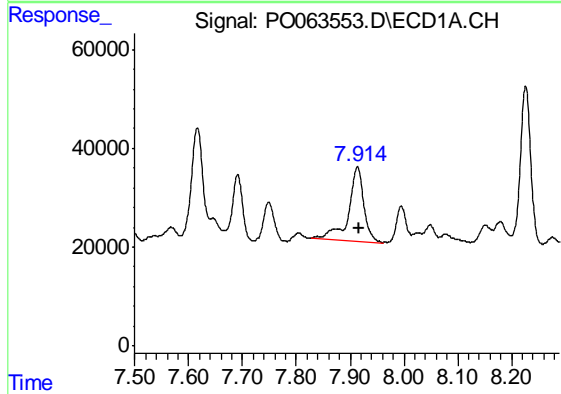
R.T.: 7.691 min  
 Delta R.T.: 0.000 min  
 Response: 185695  
 Conc: 80.24 ng/ml

Instrument :  
 ECD\_O  
 ClientSampled :  
 4-B



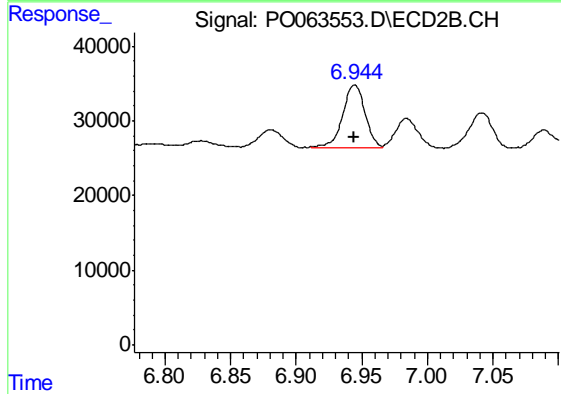
#33 AR-1260-3

R.T.: 6.474 min  
 Delta R.T.: 0.000 min  
 Response: 97786  
 Conc: 60.19 ng/ml



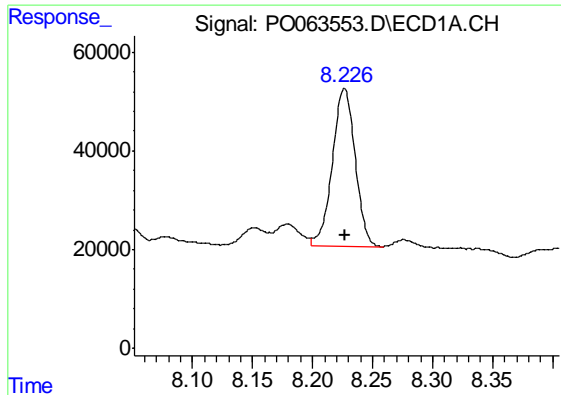
#34 AR-1260-4

R.T.: 7.914 min  
 Delta R.T.: -0.002 min  
 Response: 299884  
 Conc: 108.06 ng/ml



#34 AR-1260-4

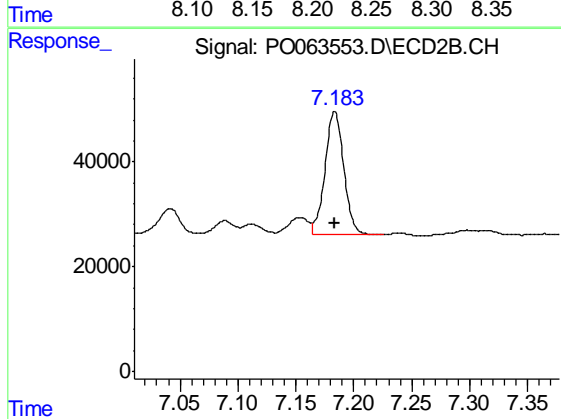
R.T.: 6.945 min  
 Delta R.T.: 0.000 min  
 Response: 100247  
 Conc: 71.06 ng/ml



#35 AR-1260-5

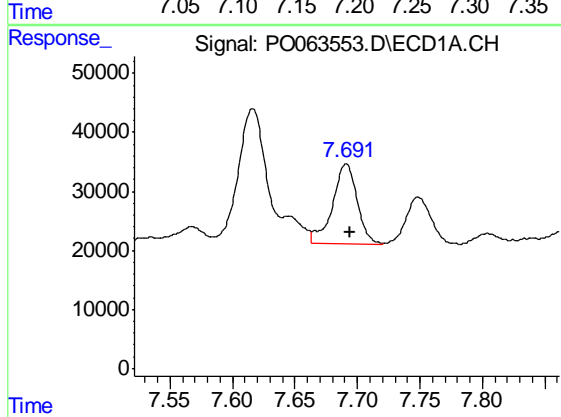
R.T.: 8.227 min  
Delta R.T.: 0.000 min  
Response: 422668  
Conc: 76.18 ng/ml

Instrument :  
ECD\_O  
ClientSampled :  
4-B



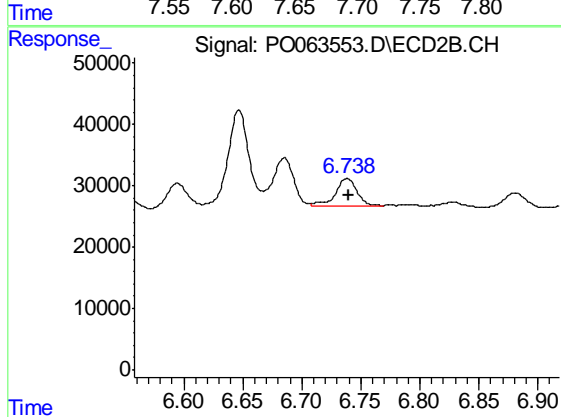
#35 AR-1260-5

R.T.: 7.184 min  
Delta R.T.: 0.000 min  
Response: 265184  
Conc: 78.72 ng/ml



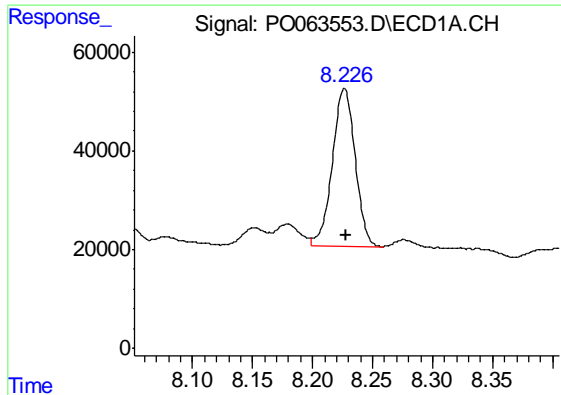
#36 AR-1262-1

R.T.: 7.691 min  
Delta R.T.: -0.003 min  
Response: 185695  
Conc: 58.10 ng/ml



#36 AR-1262-1

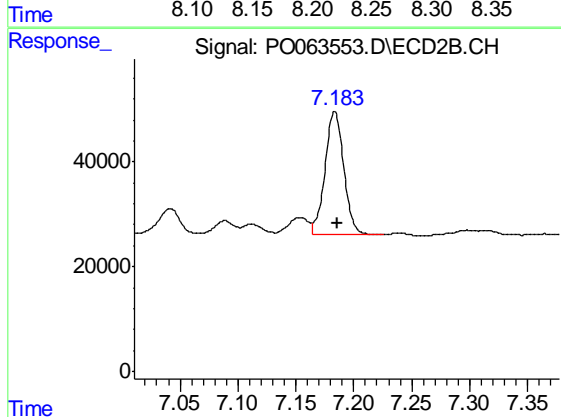
R.T.: 6.738 min  
Delta R.T.: -0.002 min  
Response: 58422  
Conc: 74.33 ng/ml



#37 AR-1262-2

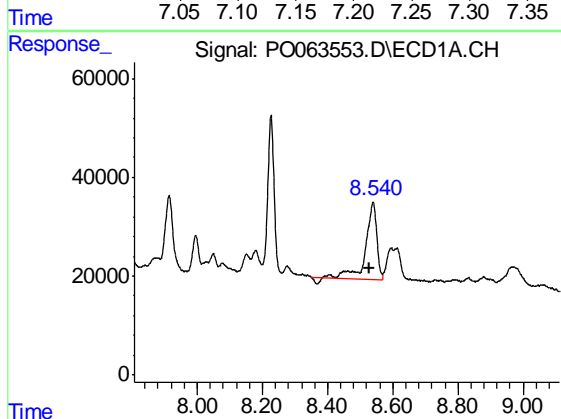
R.T.: 8.227 min  
Delta R.T.: -0.001 min  
Response: 422668  
Conc: 70.54 ng/ml

Instrument :  
ECD\_O  
ClientSampleId :  
4-B



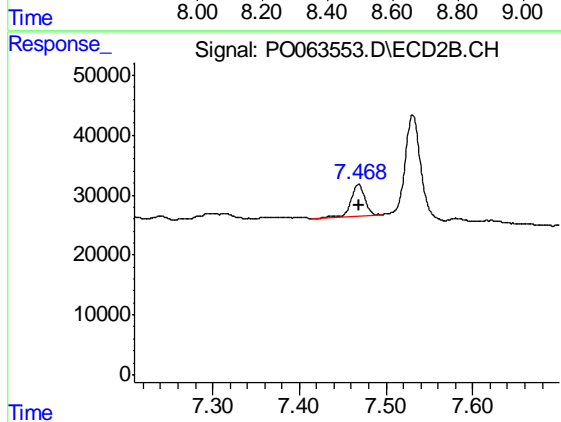
#37 AR-1262-2

R.T.: 7.184 min  
Delta R.T.: -0.002 min  
Response: 265184  
Conc: 74.91 ng/ml



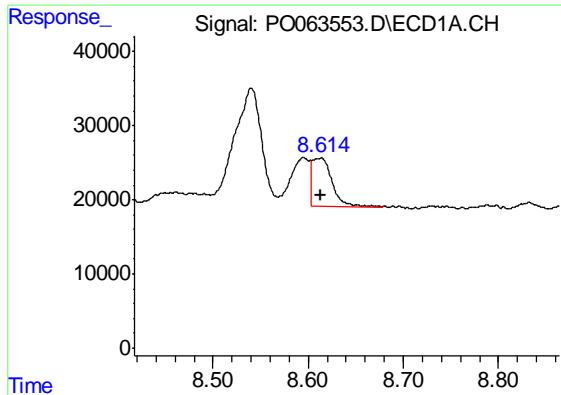
#38 AR-1262-3

R.T.: 8.540 min  
Delta R.T.: 0.012 min  
Response: 373466  
Conc: 92.58 ng/ml



#38 AR-1262-3

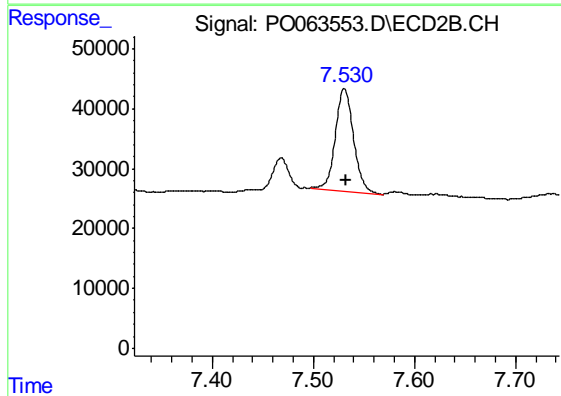
R.T.: 7.468 min  
Delta R.T.: -0.001 min  
Response: 56552  
Conc: 40.72 ng/ml



#39 AR-1262-4

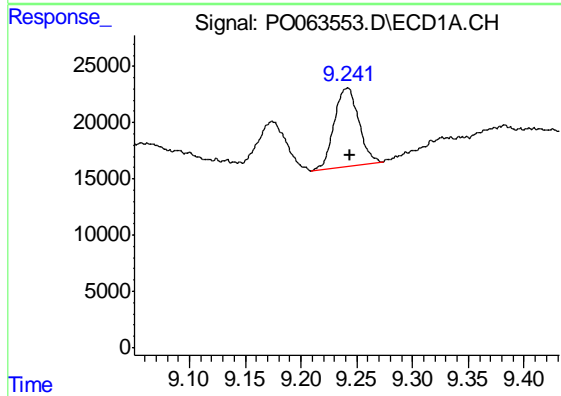
R.T.: 8.613 min  
 Delta R.T.: 0.000 min  
 Response: 93001  
 Conc: 30.72 ng/ml

Instrument :  
 ECD\_O  
 ClientSampled :  
 4-B



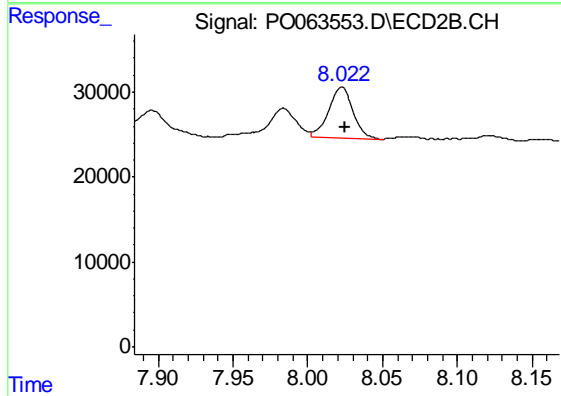
#39 AR-1262-4

R.T.: 7.531 min  
 Delta R.T.: -0.002 min  
 Response: 211358  
 Conc: 80.72 ng/ml



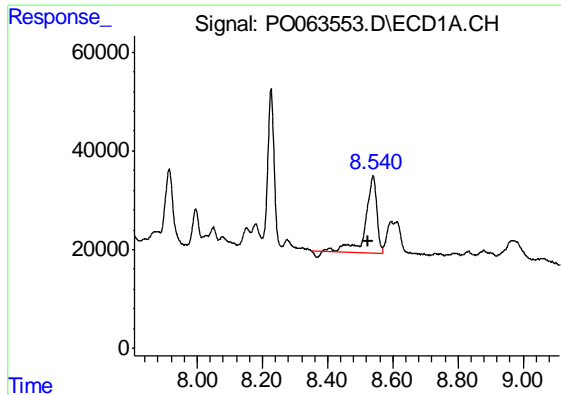
#40 AR-1262-5

R.T.: 9.242 min  
 Delta R.T.: -0.002 min  
 Response: 107424  
 Conc: 53.11 ng/ml



#40 AR-1262-5

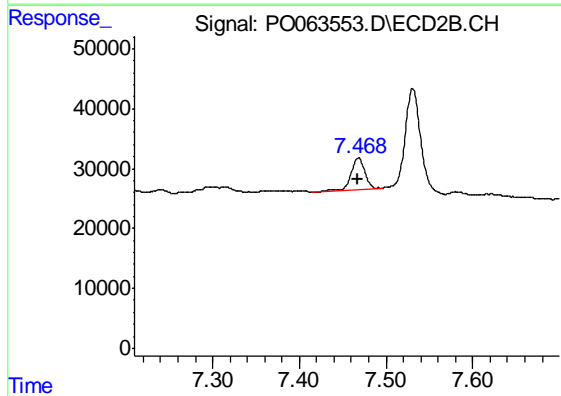
R.T.: 8.023 min  
 Delta R.T.: -0.002 min  
 Response: 69808  
 Conc: 60.99 ng/ml



#41 AR-1268-1

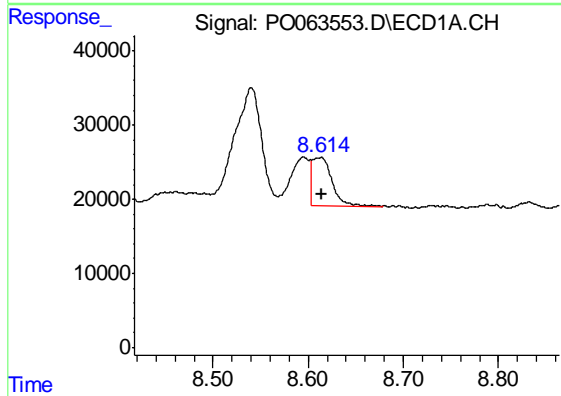
R.T.: 8.540 min  
 Delta R.T.: 0.016 min  
 Response: 373466  
 Conc: 53.78 ng/ml

Instrument :  
 ECD\_O  
 ClientSampled :  
 4-B



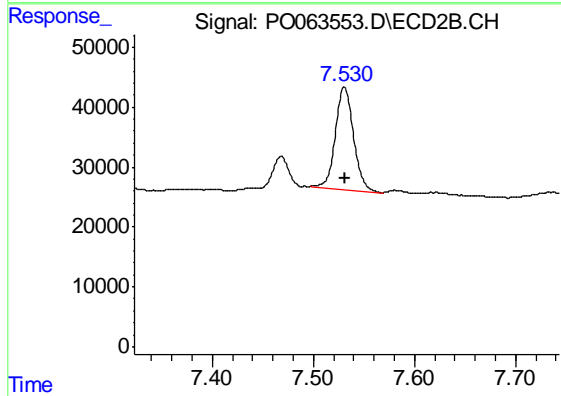
#41 AR-1268-1

R.T.: 7.468 min  
 Delta R.T.: 0.000 min  
 Response: 56552  
 Conc: 13.92 ng/ml



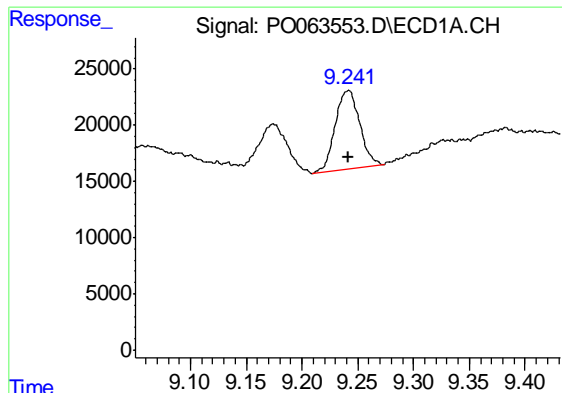
#42 AR-1268-2

R.T.: 8.613 min  
 Delta R.T.: 0.000 min  
 Response: 93001  
 Conc: 14.65 ng/ml



#42 AR-1268-2

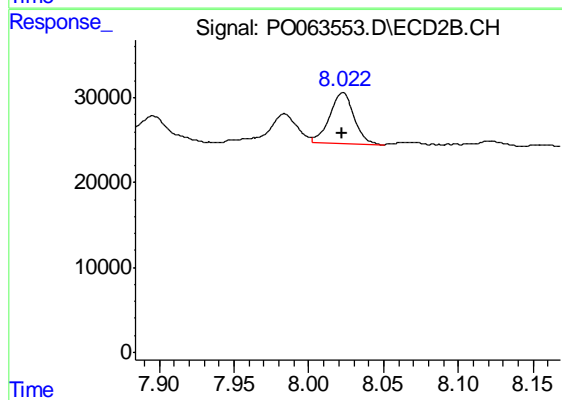
R.T.: 7.531 min  
 Delta R.T.: 0.000 min  
 Response: 211358  
 Conc: 57.36 ng/ml



#44 AR-1268-4

R.T.: 9.242 min  
Delta R.T.: 0.000 min  
Response: 107424  
Conc: 48.02 ng/ml

Instrument :  
ECD\_O  
ClientSampleId :  
4-B



#44 AR-1268-4

R.T.: 8.023 min  
Delta R.T.: 0.000 min  
Response: 69808  
Conc: 54.46 ng/ml