

Data Path : Z:\pestpcbsrv\HPCHEM1\ECD_0\Data\PO110818\
 Data File : PO051235.D
 Signal(s) : Signal #1: ECD1A.CH Signal #2: ECD2B.CH
 Acq On : 08 Nov 2018 3:36
 Operator : SM/SJ
 Sample : J5797-07
 Misc :
 ALS Vial : 31 Sample Multiplier: 1

Instrument :
 ECD_O
 ClientSampleId :

Integration File signal 1: autoint1.e
 Integration File signal 2: autoint2.e
 Quant Time: Nov 08 09:24:54 2018
 Quant Method : Z:\pestpcbsrv\HPCHEM1\ECD_0\methods\PO110518.M
 Quant Title : GC EXTRACTABLES
 QLast Update : Tue Nov 06 00:37:39 2018
 Response via : Initial Calibration
 Integrator: ChemStation 6890 Scale Mode: Small noise peaks clipped

Volume Inj. : 2 µl
 Signal #1 Phase : ZB-MR2 Signal #2 Phase: ZB-MR2
 Signal #1 Info : 30Mx0.32mmx 0.50µ Signal #2 Info : 30M x 0.32mm x 0.25µm

	Compound	RT#1	RT#2	Resp#1	Resp#2	ng/ml	ng/ml

System Monitoring Compounds							
1)	SA Tetrachlo...	4.339	3.338	10809640	4202953	28.974	20.372 #
2)	SA Decachlor...	9.981	8.073	3167321	1952848	10.724	9.199
Target Compounds							
10)	L2 AR-1221-3	0.000	3.738	0	1071825	N.D.	210.791 #
11)	L3 AR-1232-1	0.000	3.738	0	1071825	N.D.	277.945 #
12)	L3 AR-1232-2	5.306	0.000	1194473	0	332.998	N.D. #
27)	L6 AR-1254-2	6.552	0.000	1534087	0	71.049	N.D. #
28)	L6 AR-1254-3	6.940	0.000	586211	0	25.701	N.D. #
29)	L6 AR-1254-4	0.000	5.845	0	1078905	N.D.	80.010 #
30)	L6 AR-1254-5	7.634	6.250	689583	1009042	38.768	51.382 #
31)	L7 AR-1260-1	0.000	5.753	0	1558891	N.D.	118.360 #
32)	L7 AR-1260-2	7.347	5.938	1478083	911838	75.587	49.367 #
33)	L7 AR-1260-3	7.656	0.000	667441	0	52.900	N.D. #
35)	L7 AR-1260-5	8.245	6.774	762438	744027	26.459	25.668
36)	L8 AR-1262-1	7.656	6.290	667441	319051	27.958	12.972 #
37)	L8 AR-1262-2	8.245	6.774	762438	744027	19.424	19.031
38)	L8 AR-1262-3	0.000	7.110	0	759744	N.D.	47.026 #
39)	L8 AR-1262-4	0.000	7.110	0	759744	N.D.	27.830 #
41)	L9 AR-1268-1	0.000	7.110	0	759744	N.D.	14.820 #
42)	L9 AR-1268-2	0.000	7.110	0	759744	N.D.	17.337 #

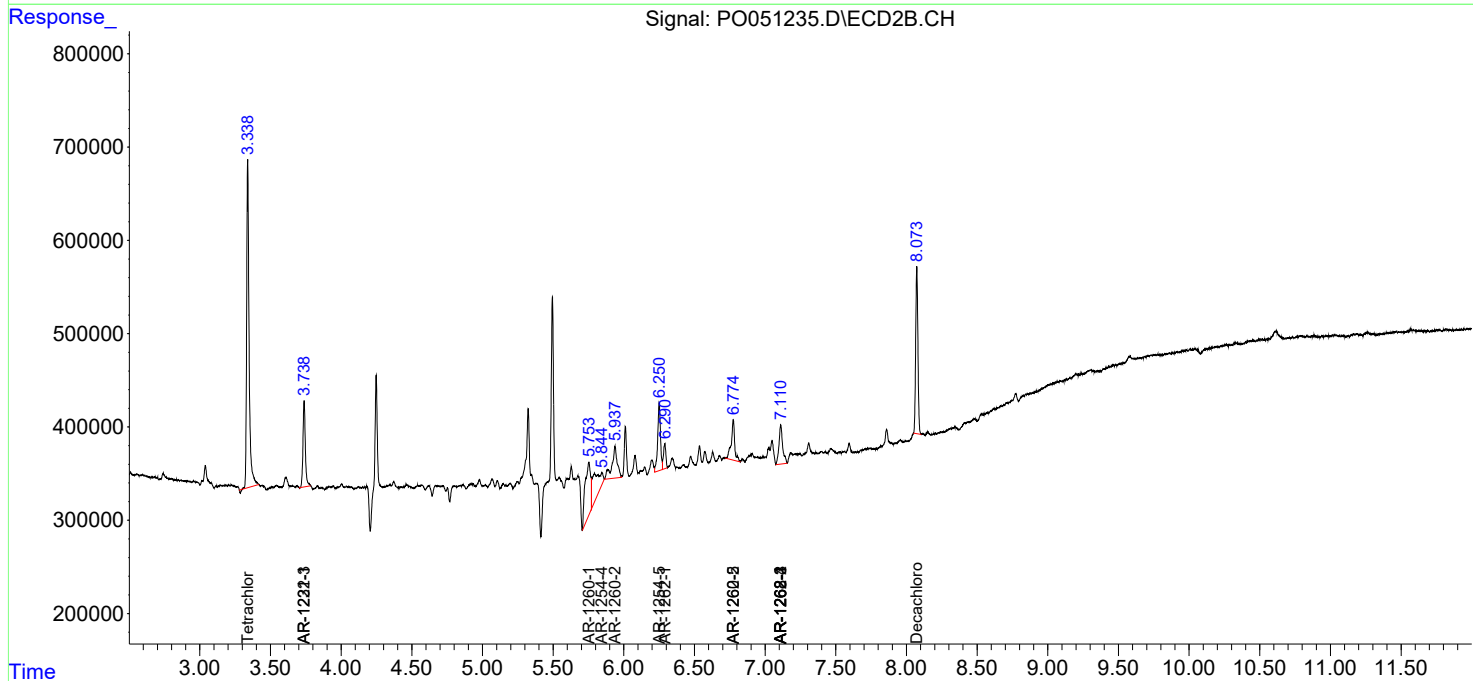
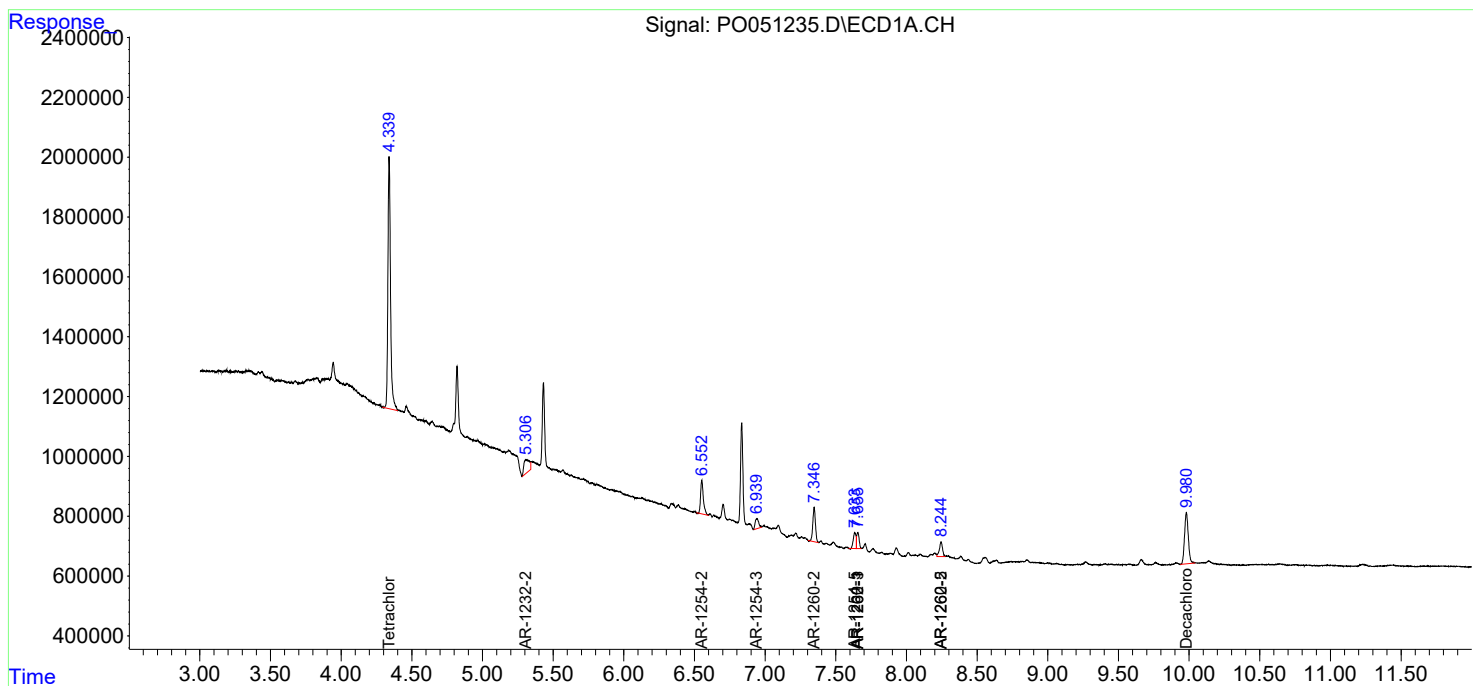
(f)=RT Delta > 1/2 Window (#)=Amounts differ by > 25% (m)=manual int.

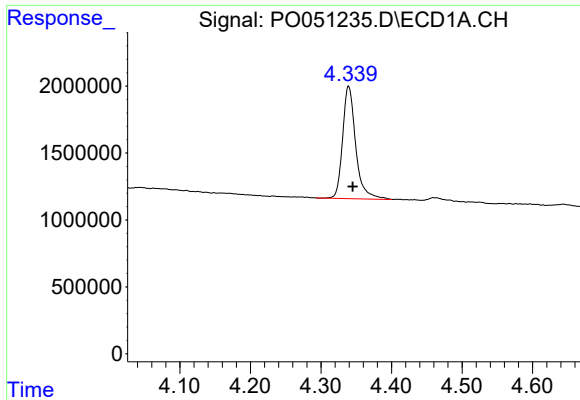
Data Path : Z:\pestpcbsrv\HPCHEM1\ECD_0\Data\PO110818\
 Data File : PO051235.D
 Signal(s) : Signal #1: ECD1A.CH Signal #2: ECD2B.CH
 Acq On : 08 Nov 2018 3:36
 Operator : SM/SJ
 Sample : J5797-07
 Misc :
 ALS Vial : 31 Sample Multiplier: 1

Instrument :
 ECD_O
 ClientSampled :

Integration File signal 1: autoint1.e
 Integration File signal 2: autoint2.e
 Quant Time: Nov 08 09:24:54 2018
 Quant Method : Z:\pestpcbsrv\HPCHEM1\ECD_0\methods\PO110518.M
 Quant Title : GC EXTRACTABLES
 QLast Update : Tue Nov 06 00:37:39 2018
 Response via : Initial Calibration
 Integrator: ChemStation 6890 Scale Mode: Small noise peaks clipped

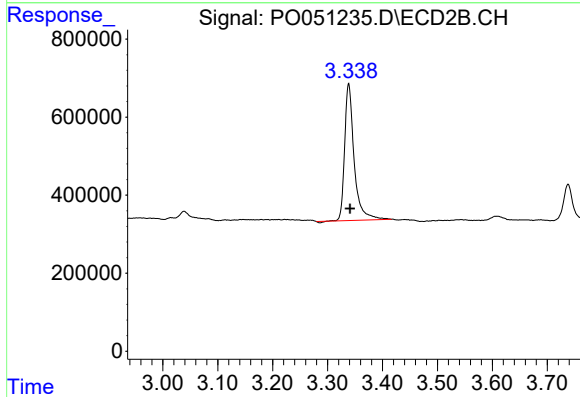
Volume Inj. : 2 µl
 Signal #1 Phase : ZB-MR1 Signal #2 Phase: ZB-MR2
 Signal #1 Info : 30Mx0.32mmx 0.50µ Signal #2 Info : 30M x 0.32mm x 0.25µm



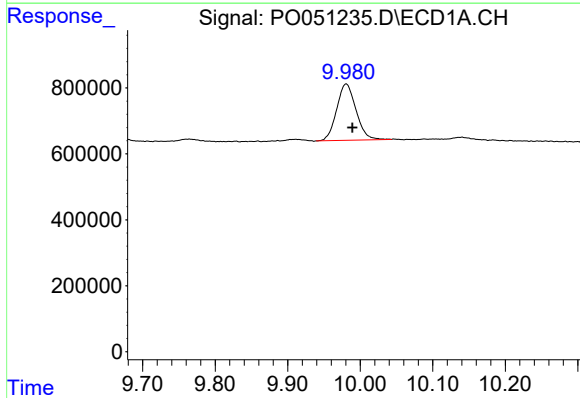


#1 Tetrachloro-m-xylene
 R.T.: 4.339 min
 Delta R.T.: -0.006 min
 Response: 10809640
 Conc: 28.97 ng/ml

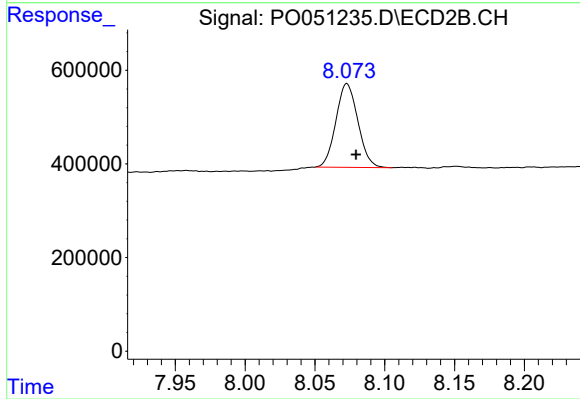
Instrument :
 ECD_O
 ClientSampled :



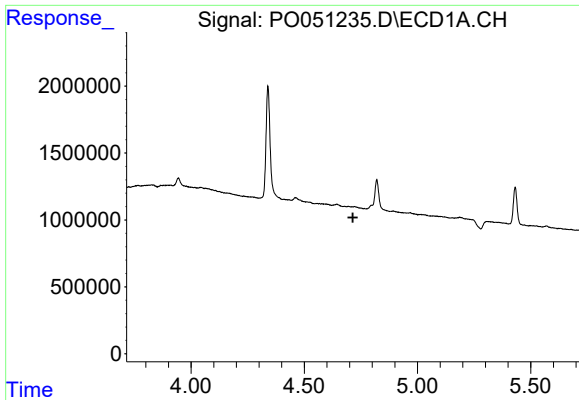
#1 Tetrachloro-m-xylene
 R.T.: 3.338 min
 Delta R.T.: -0.003 min
 Response: 4202953
 Conc: 20.37 ng/ml



#2 Decachlorobiphenyl
 R.T.: 9.981 min
 Delta R.T.: -0.008 min
 Response: 3167321
 Conc: 10.72 ng/ml



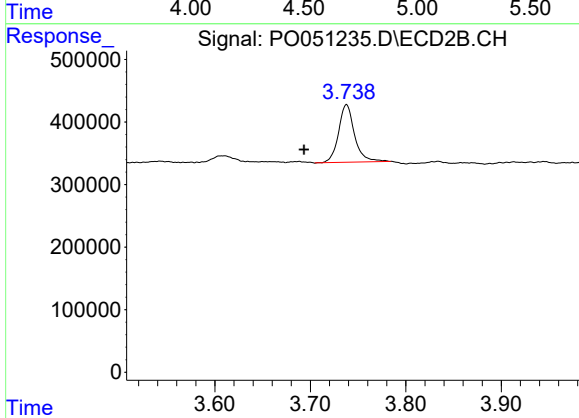
#2 Decachlorobiphenyl
 R.T.: 8.073 min
 Delta R.T.: -0.006 min
 Response: 1952848
 Conc: 9.20 ng/ml



#10 AR-1221-3

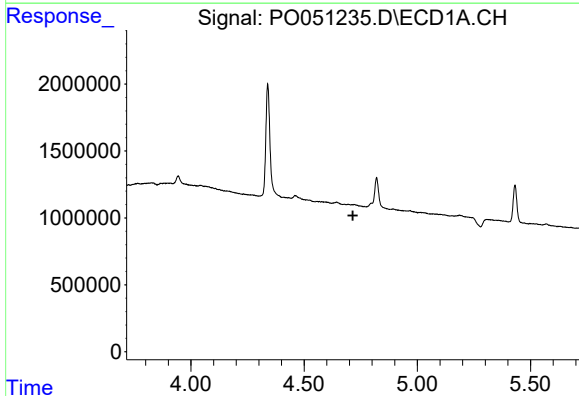
R.T.: 0.000 min
 Exp R.T. : 4.715 min
 Response: 0
 Conc: N.D.

Instrument :
 ECD_O
 ClientSampled :



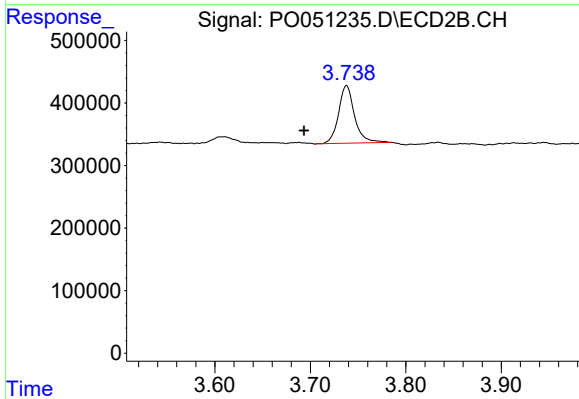
#10 AR-1221-3

R.T.: 3.738 min
 Delta R.T.: 0.045 min
 Response: 1071825
 Conc: 210.79 ng/ml



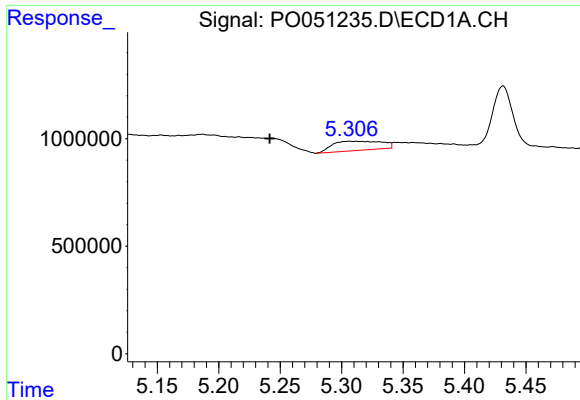
#11 AR-1232-1

R.T.: 0.000 min
 Exp R.T. : 4.716 min
 Response: 0
 Conc: N.D.



#11 AR-1232-1

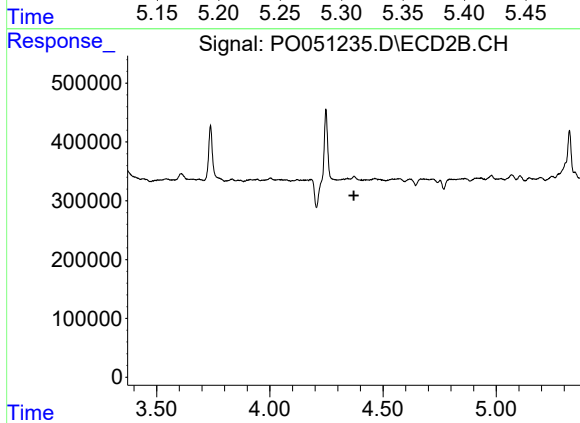
R.T.: 3.738 min
 Delta R.T.: 0.044 min
 Response: 1071825
 Conc: 277.95 ng/ml



#12 AR-1232-2

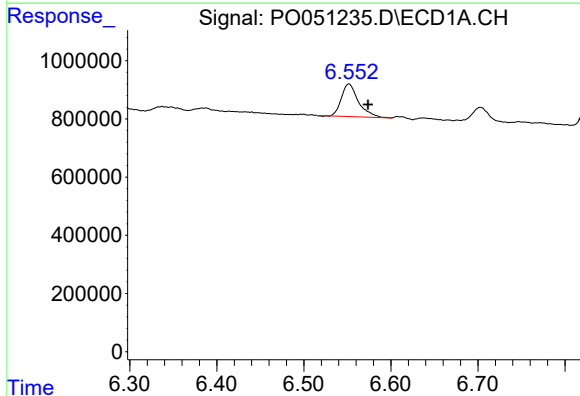
R.T.: 5.306 min
 Delta R.T.: 0.065 min
 Response: 1194473
 Conc: 333.00 ng/ml

Instrument :
 ECD_O
 ClientSampleId :



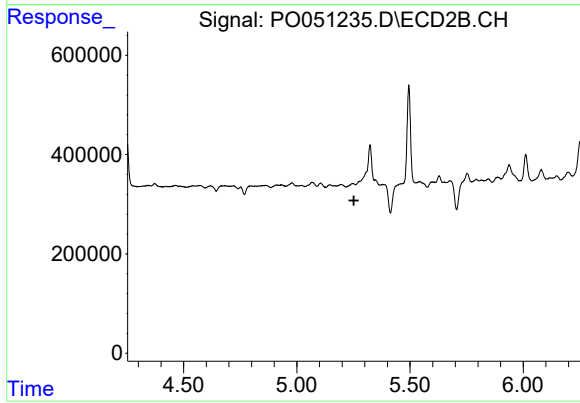
#12 AR-1232-2

R.T.: 0.000 min
 Exp R.T. : 4.371 min
 Response: 0
 Conc: N.D.



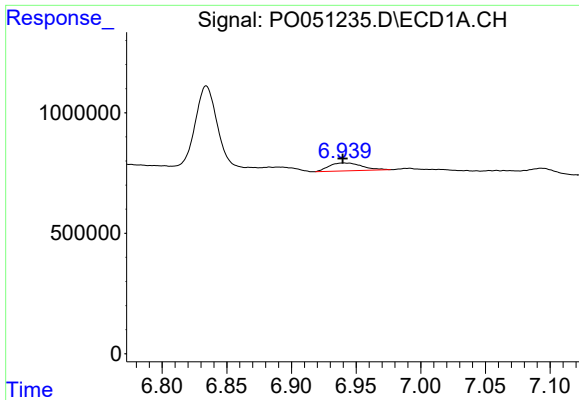
#27 AR-1254-2

R.T.: 6.552 min
 Delta R.T.: -0.022 min
 Response: 1534087
 Conc: 71.05 ng/ml



#27 AR-1254-2

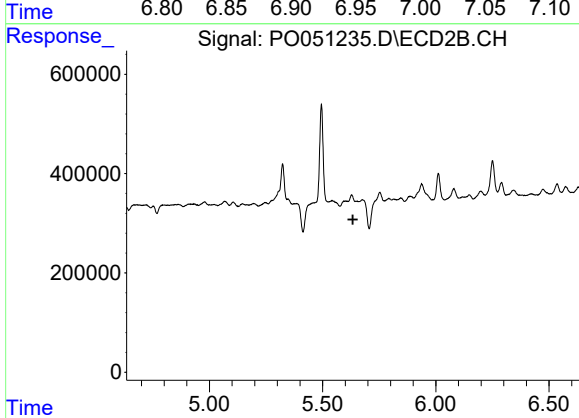
R.T.: 0.000 min
 Exp R.T. : 5.252 min
 Response: 0
 Conc: N.D.



#28 AR-1254-3

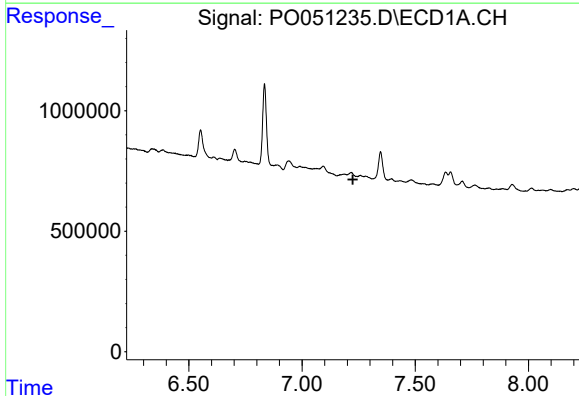
R.T.: 6.940 min
 Delta R.T.: 0.000 min
 Response: 586211
 Conc: 25.70 ng/ml

Instrument :
 ECD_O
 ClientSampled :



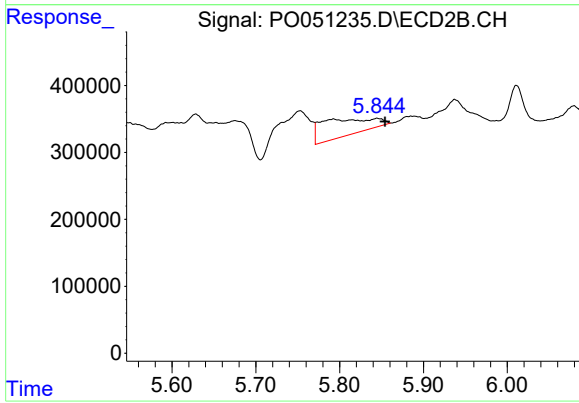
#28 AR-1254-3

R.T.: 0.000 min
 Exp R.T. : 5.634 min
 Response: 0
 Conc: N.D.



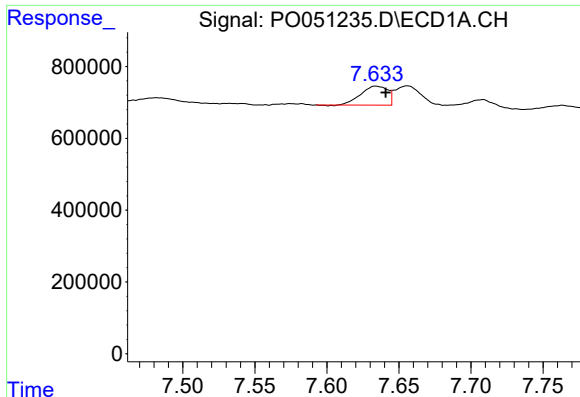
#29 AR-1254-4

R.T.: 0.000 min
 Exp R.T. : 7.225 min
 Response: 0
 Conc: N.D.



#29 AR-1254-4

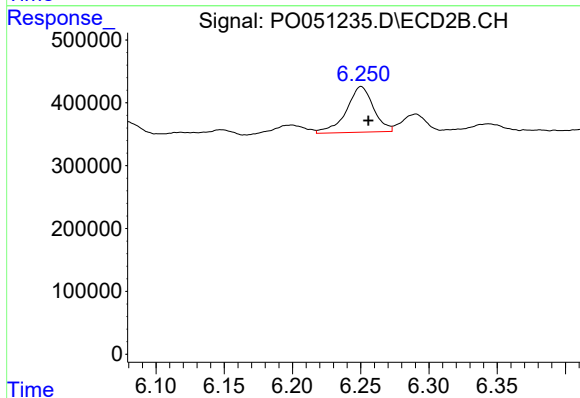
R.T.: 5.845 min
 Delta R.T.: -0.010 min
 Response: 1078905
 Conc: 80.01 ng/ml



#30 AR-1254-5

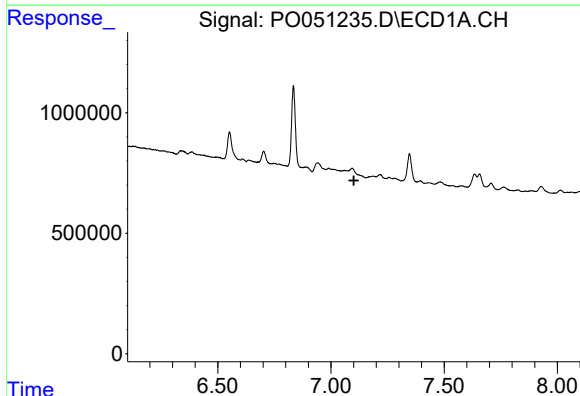
R.T.: 7.634 min
 Delta R.T.: -0.007 min
 Response: 689583
 Conc: 38.77 ng/ml

Instrument :
 ECD_O
 ClientSampled :



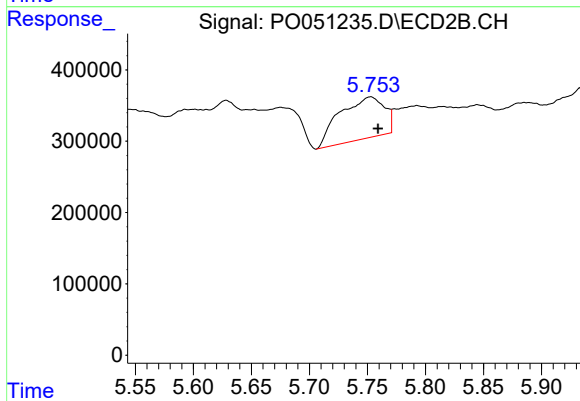
#30 AR-1254-5

R.T.: 6.250 min
 Delta R.T.: -0.005 min
 Response: 1009042
 Conc: 51.38 ng/ml



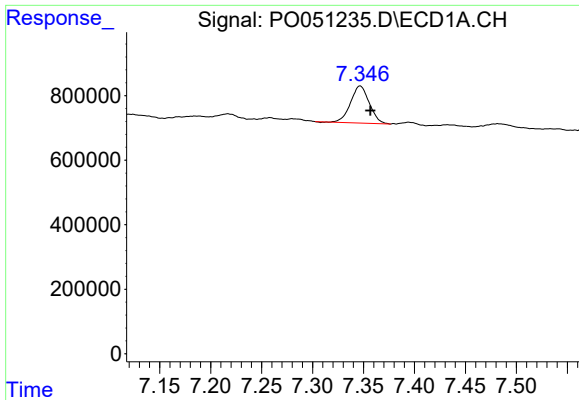
#31 AR-1260-1

R.T.: 0.000 min
 Exp R.T. : 7.101 min
 Response: 0
 Conc: N.D.



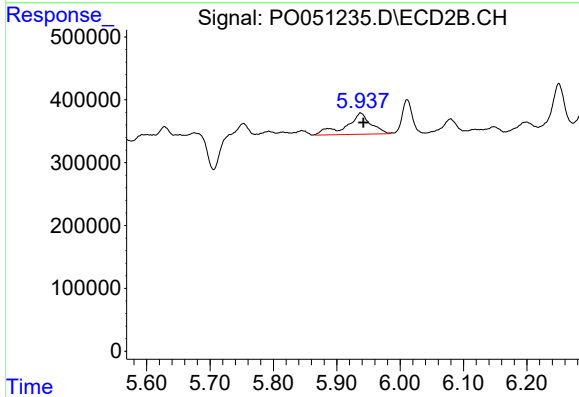
#31 AR-1260-1

R.T.: 5.753 min
 Delta R.T.: -0.006 min
 Response: 1558891
 Conc: 118.36 ng/ml

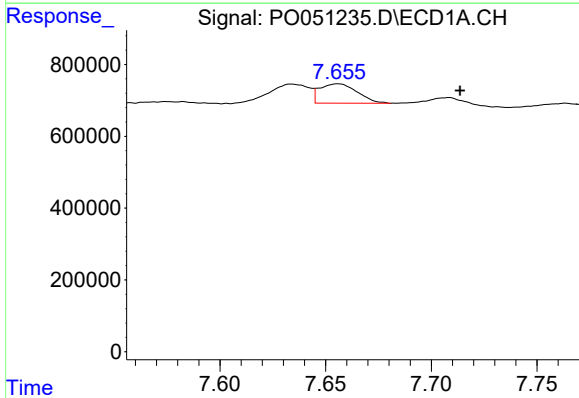


#32 AR-1260-2
 R.T.: 7.347 min
 Delta R.T.: -0.010 min
 Response: 1478083
 Conc: 75.59 ng/ml

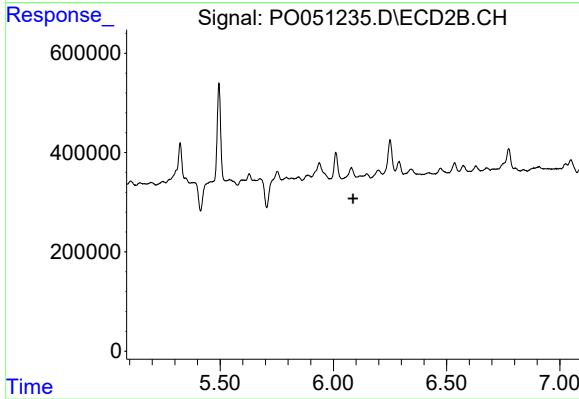
Instrument :
 ECD_O
 ClientSampleId :



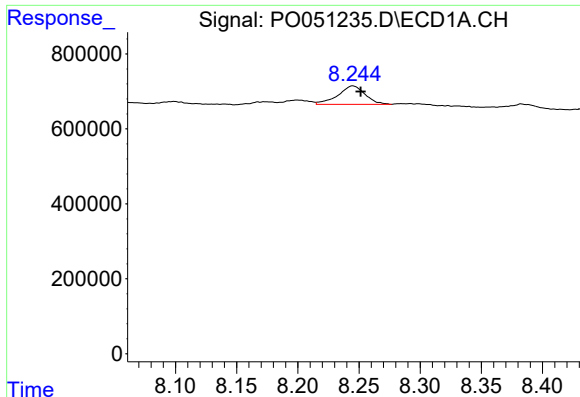
#32 AR-1260-2
 R.T.: 5.938 min
 Delta R.T.: -0.005 min
 Response: 911838
 Conc: 49.37 ng/ml



#33 AR-1260-3
 R.T.: 7.656 min
 Delta R.T.: -0.058 min
 Response: 667441
 Conc: 52.90 ng/ml



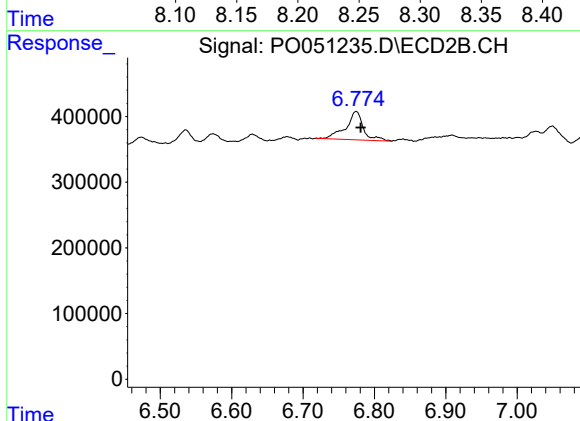
#33 AR-1260-3
 R.T.: 0.000 min
 Exp R.T. : 6.087 min
 Response: 0
 Conc: N.D.



#35 AR-1260-5

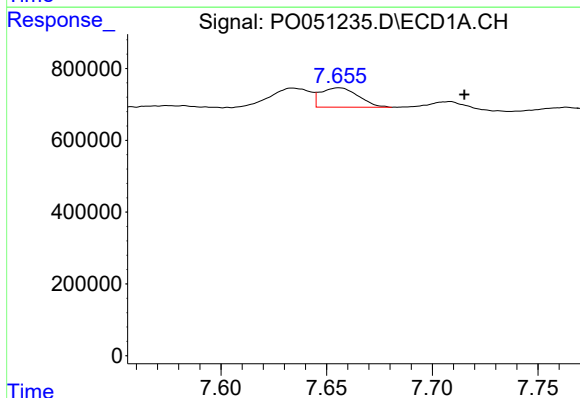
R.T.: 8.245 min
 Delta R.T.: -0.006 min
 Response: 762438
 Conc: 26.46 ng/ml

Instrument :
 ECD_O
 ClientSampleId :



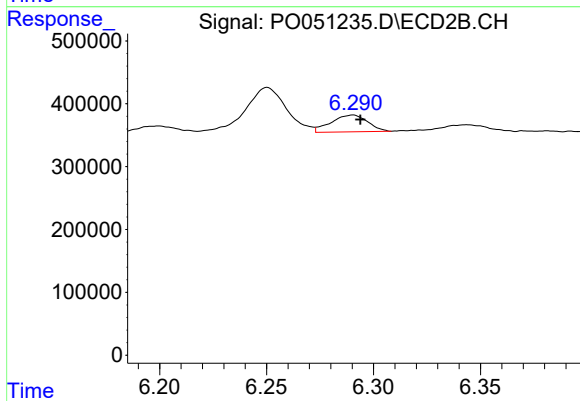
#35 AR-1260-5

R.T.: 6.774 min
 Delta R.T.: -0.006 min
 Response: 744027
 Conc: 25.67 ng/ml



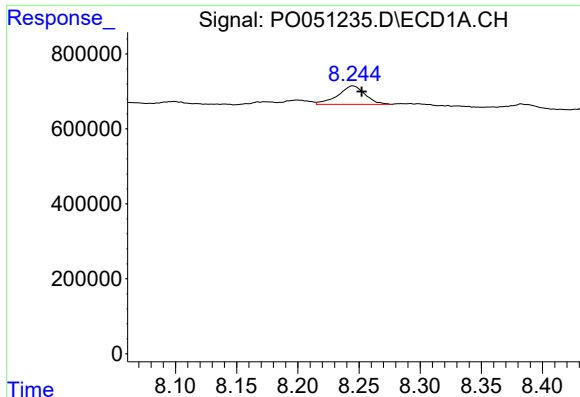
#36 AR-1262-1

R.T.: 7.656 min
 Delta R.T.: -0.059 min
 Response: 667441
 Conc: 27.96 ng/ml



#36 AR-1262-1

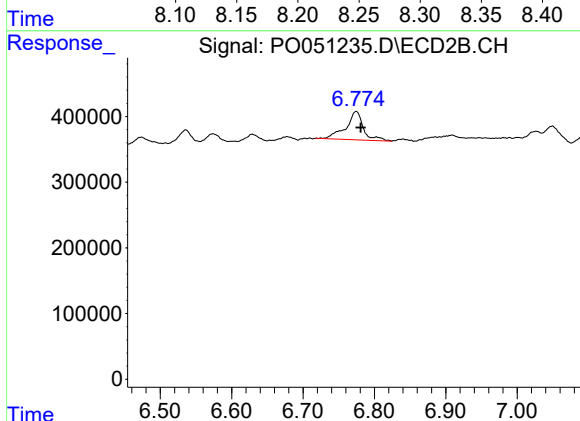
R.T.: 6.290 min
 Delta R.T.: -0.003 min
 Response: 319051
 Conc: 12.97 ng/ml



#37 AR-1262-2

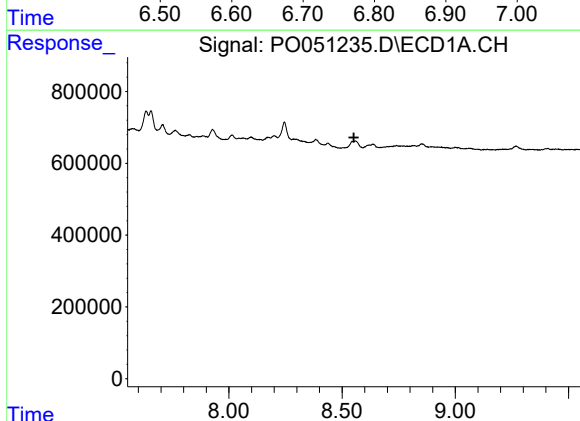
R.T.: 8.245 min
 Delta R.T.: -0.007 min
 Response: 762438
 Conc: 19.42 ng/ml

Instrument :
 ECD_O
 ClientSampleId :



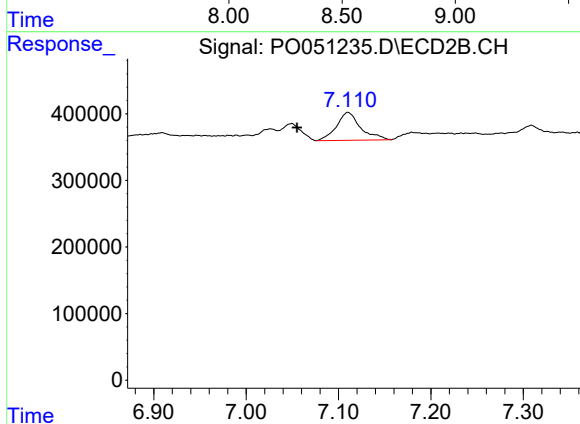
#37 AR-1262-2

R.T.: 6.774 min
 Delta R.T.: -0.006 min
 Response: 744027
 Conc: 19.03 ng/ml



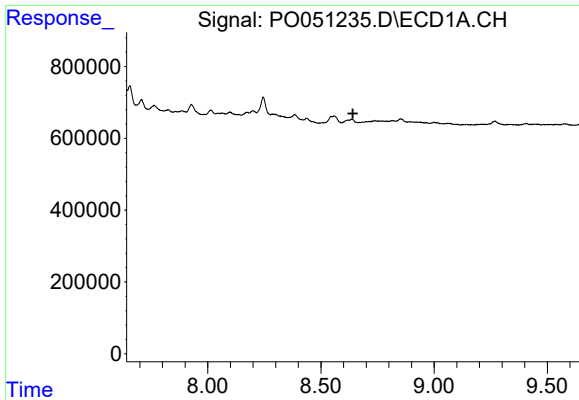
#38 AR-1262-3

R.T.: 0.000 min
 Exp R.T. : 8.552 min
 Response: 0
 Conc: N.D.



#38 AR-1262-3

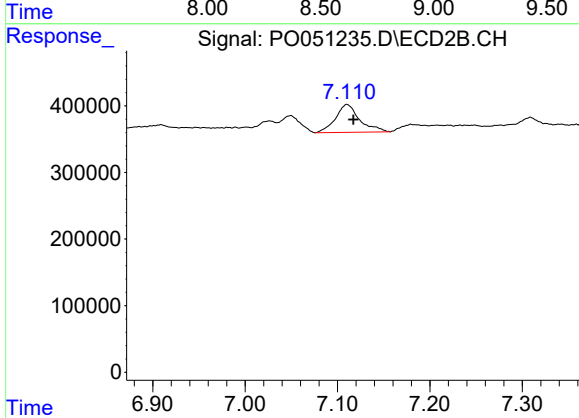
R.T.: 7.110 min
 Delta R.T.: 0.055 min
 Response: 759744
 Conc: 47.03 ng/ml



#39 AR-1262-4

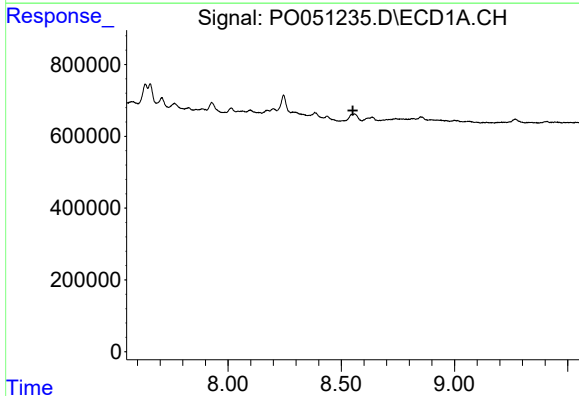
R.T.: 0.000 min
 Exp R.T. : 8.641 min
 Response: 0
 Conc: N.D.

Instrument :
 ECD_O
 ClientSampled :



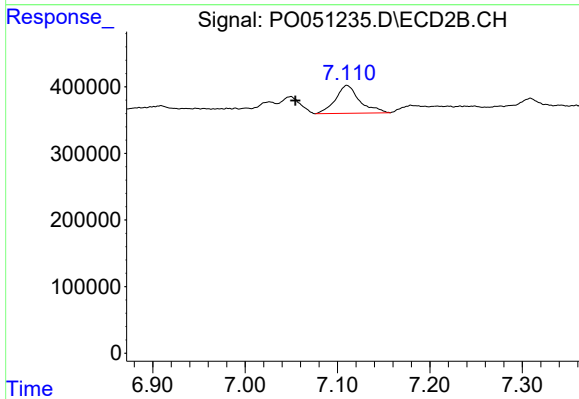
#39 AR-1262-4

R.T.: 7.110 min
 Delta R.T.: -0.007 min
 Response: 759744
 Conc: 27.83 ng/ml



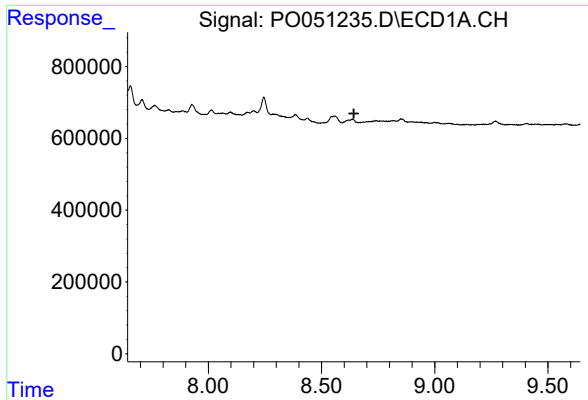
#41 AR-1268-1

R.T.: 0.000 min
 Exp R.T. : 8.551 min
 Response: 0
 Conc: N.D.



#41 AR-1268-1

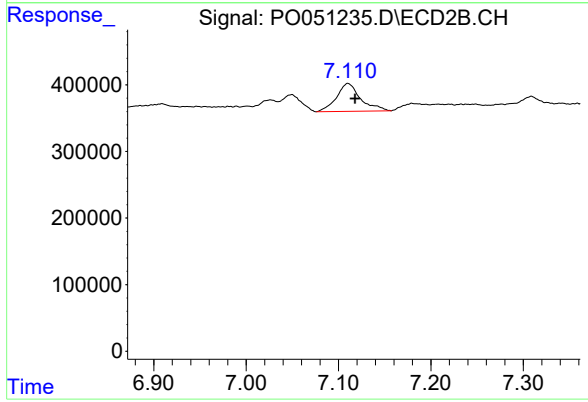
R.T.: 7.110 min
 Delta R.T.: 0.056 min
 Response: 759744
 Conc: 14.82 ng/ml



#42 AR-1268-2

R.T.: 0.000 min
Exp R.T. : 8.643 min
Response: 0
Conc: N.D.

Instrument :
ECD_O
ClientSampleId :



#42 AR-1268-2

R.T.: 7.110 min
Delta R.T.: -0.008 min
Response: 759744
Conc: 17.34 ng/ml