

Data Path : Z:\pestpcbsrv\HPCHEM1\ECD_0\Data\PO110818\
 Data File : PO051196.D
 Signal(s) : Signal #1: ECD1A.CH Signal #2: ECD2B.CH
 Acq On : 07 Nov 2018 13:42
 Operator : SM/SJ
 Sample : J5764-01
 Misc :
 ALS Vial : 13 Sample Multiplier: 1

Instrument :
 ECD_0
 ClientSampleId :
 JC-03-110218-A

Manual Integrations
 APPROVED

SOHIL
 11/12/2018 6:25:06 AM

Integration File signal 1: autoint1.e
 Integration File signal 2: autoint2.e
 Quant Time: Nov 07 16:16:49 2018
 Quant Method : Z:\pestpcbsrv\HPCHEM1\ECD_0\methods\PO110518.M
 Quant Title : GC EXTRACTABLES
 QLast Update : Tue Nov 06 00:37:39 2018
 Response via : Initial Calibration
 Integrator: ChemStation 6890 Scale Mode: Small noise peaks clipped

Volume Inj. : 2 µl
 Signal #1 Phase : ZB-MR1 Signal #2 Phase: ZB-MR2
 Signal #1 Info : 30Mx0.32mmx 0.50µ Signal #2 Info : 30M x 0.32mm x 0.25µm

Compound	RT#1	RT#2	Resp#1	Resp#2	ng/ml	ng/ml

System Monitoring Compounds						
1) SA Tetrachlo...	4.355	3.339	7016030	2641175	18.806m	12.802 #
2) SA Decachlor...	10.009	8.080	4144079	2113847	14.032	9.957 #
Target Compounds						
16) L4 AR-1242-1	5.520	4.334	2785043	57648	273.703m	10.016m#
17) L4 AR-1242-2	5.541	4.372	7195926	3825638	462.928m	394.489m
18) L4 AR-1242-3	5.609	4.534	1307958	1125237	140.670m	229.571m#
19) L4 AR-1242-4	5.701	4.615	1979946	4734394	263.308m	987.513 #
20) L4 AR-1242-5	6.434	5.110	6017352	3208522	804.157m	498.087 #
31) L7 AR-1260-1	7.112	5.759	1181944	1127596	77.411m	85.614m
32) L7 AR-1260-2	7.366	5.941	3880225	1156144	198.429m	62.594m#
33) L7 AR-1260-3	7.726	6.085	1061416	811611	84.126	52.451m#
34) L7 AR-1260-4	7.949	6.543	913464	322549	64.910m	30.315 #
35) L7 AR-1260-5	8.265	6.781	1389730	1085230	48.227	37.439

(f)=RT Delta > 1/2 Window (#)=Amounts differ by > 25% (m)=manual int.

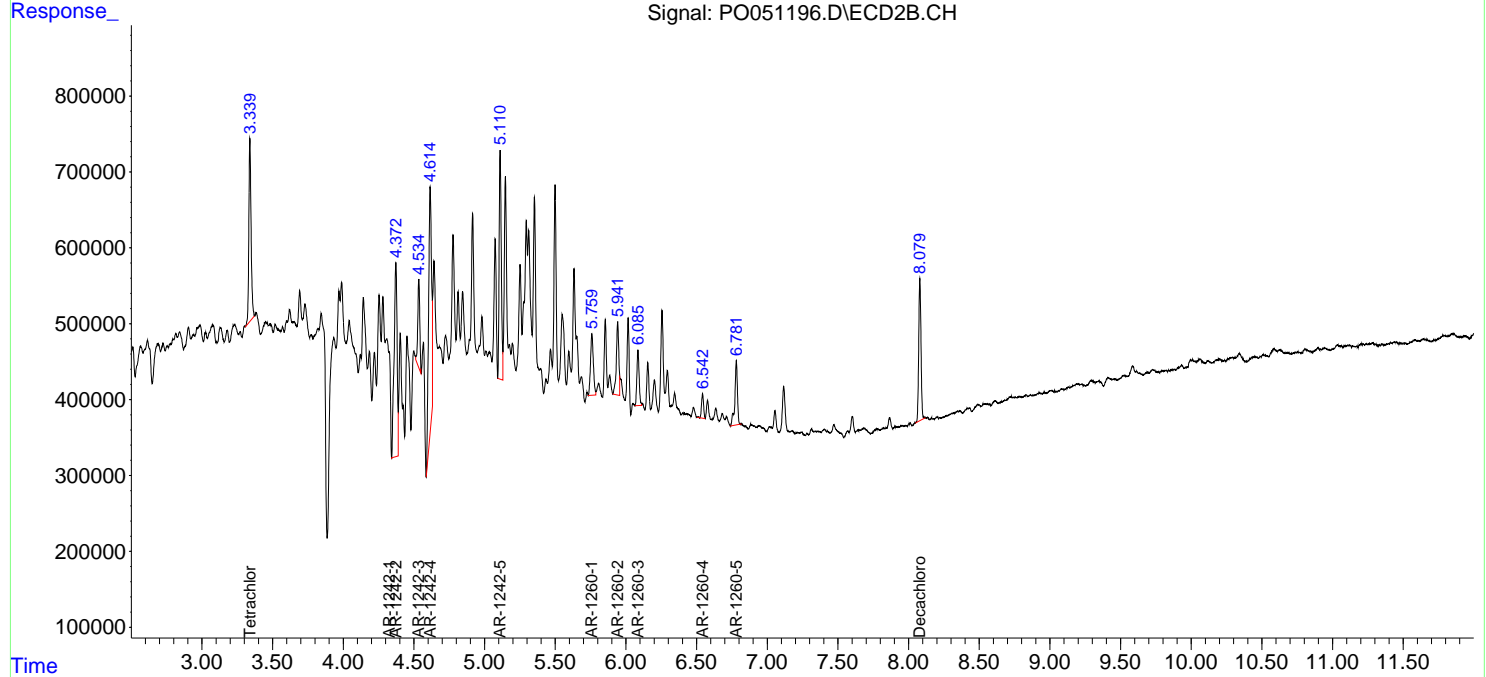
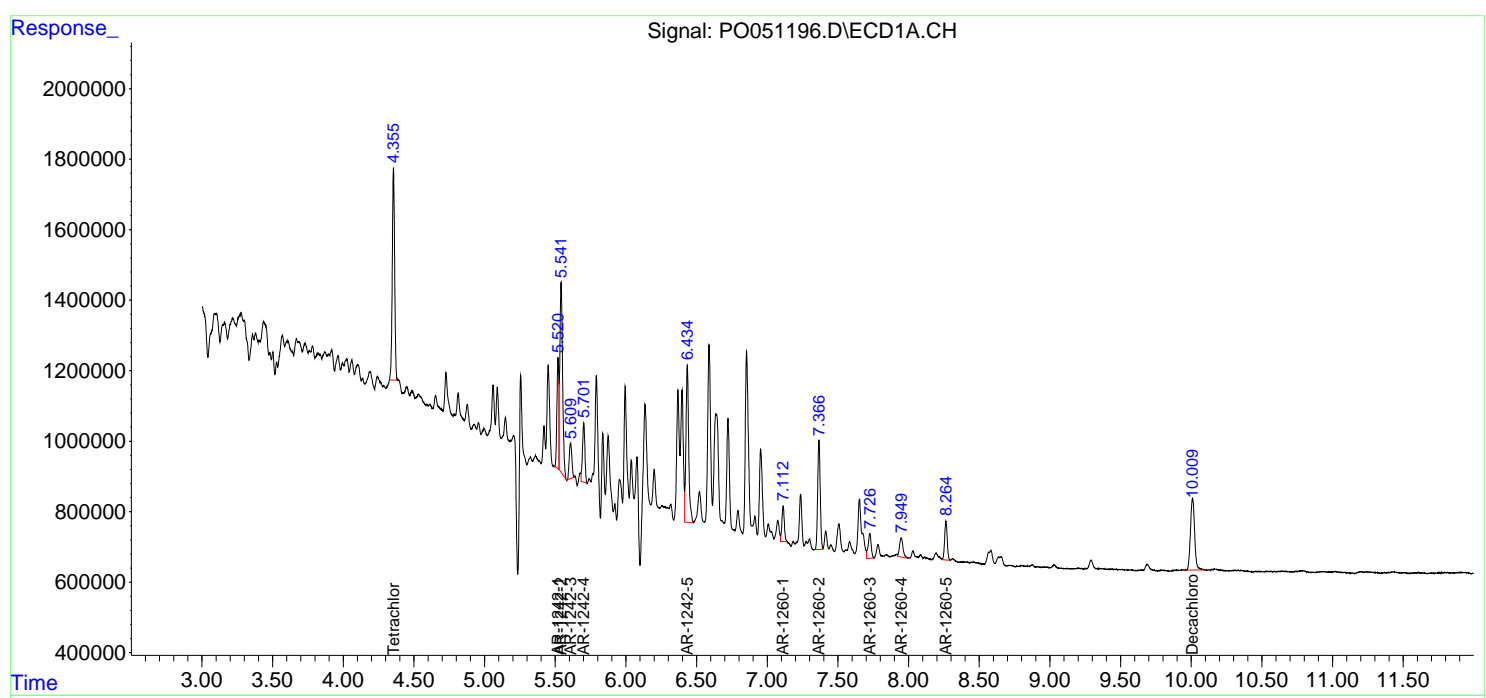
Data Path : Z:\pestpcbsrv\HPCHEM1\ECD_O\Data\PO110818\
 Data File : PO051196.D
 Signal(s) : Signal #1: ECD1A.CH Signal #2: ECD2B.CH
 Acq On : 07 Nov 2018 13:42
 Operator : SM/SJ
 Sample : J5764-01
 Misc :
 ALS Vial : 13 Sample Multiplier: 1

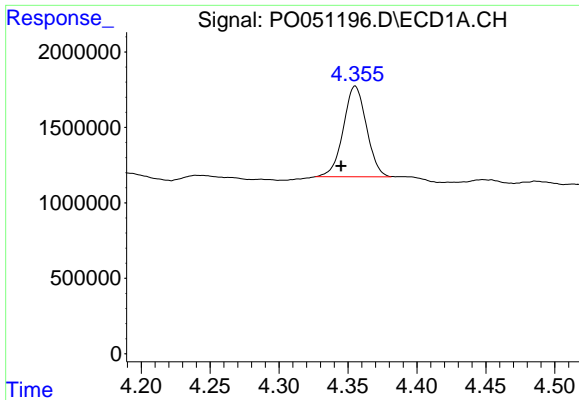
Instrument :
 ECD_O
Client Sampled :
 JC-03-110218-A

Manual Integrations
APPROVED
 SOHIL
 11/12/2018 6:25:06 AM

Integration File signal 1: autoint1.e
 Integration File signal 2: autoint2.e
 Quant Time: Nov 07 16:16:49 2018
 Quant Method : Z:\pestpcbsrv\HPCHEM1\ECD_O\methods\PO110518.M
 Quant Title : GC EXTRACTABLES
 QLast Update : Tue Nov 06 00:37:39 2018
 Response via : Initial Calibration
 Integrator: ChemStation 6890 Scale Mode: Small noise peaks clipped

Volume Inj. : 2 µl
 Signal #1 Phase : ZB-MR1 Signal #2 Phase: ZB-MR2
 Signal #1 Info : 30Mx0.32mmx 0.50µ Signal #2 Info : 30M x 0.32mm x 0.25µm

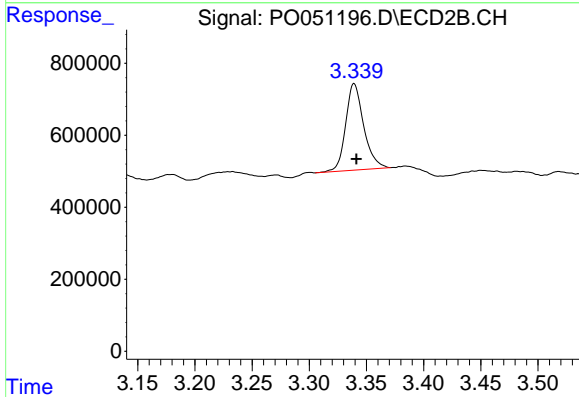




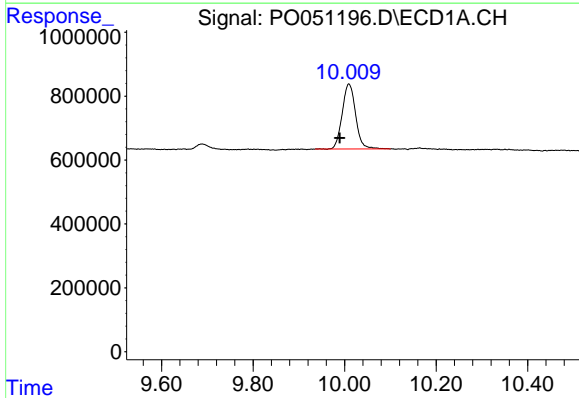
#1 Tetrachloro-m-xylene
 R.T.: 4.355 min
 Delta R.T.: 0.010 min
 Response: 7016030
 Conc: 18.81 ng/ml m

Instrument :
 ECD_O
 ClientSampleId :
 JC-03-110218-A

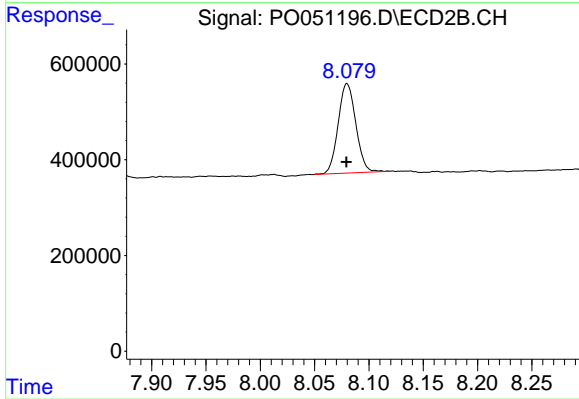
Manual Integrations
 APPROVED
 SOHIL
 11/12/2018 6:25:06 AM



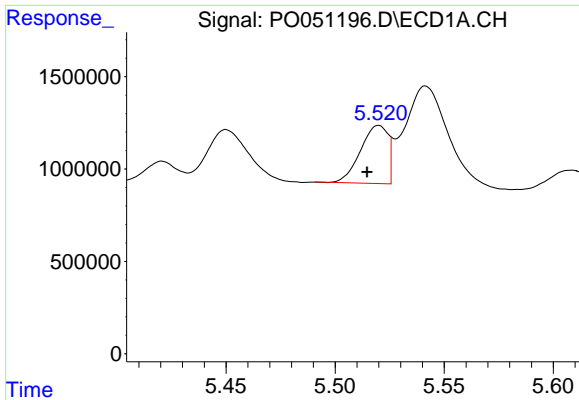
#1 Tetrachloro-m-xylene
 R.T.: 3.339 min
 Delta R.T.: -0.002 min
 Response: 2641175
 Conc: 12.80 ng/ml



#2 Decachlorobiphenyl
 R.T.: 10.009 min
 Delta R.T.: 0.020 min
 Response: 4144079
 Conc: 14.03 ng/ml



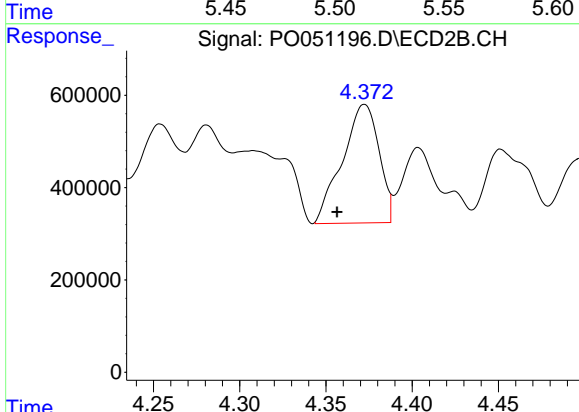
#2 Decachlorobiphenyl
 R.T.: 8.080 min
 Delta R.T.: 0.000 min
 Response: 2113847
 Conc: 9.96 ng/ml



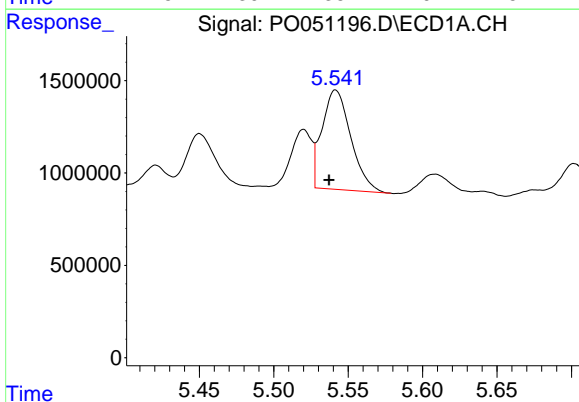
#16 AR-1242-1
 R.T.: 5.520 min
 Delta R.T.: 0.005 min
 Response: 2785043
 Conc: 273.70 ng/ml m

Instrument :
 ECD_O
ClientSampled :
 JC-03-110218-A

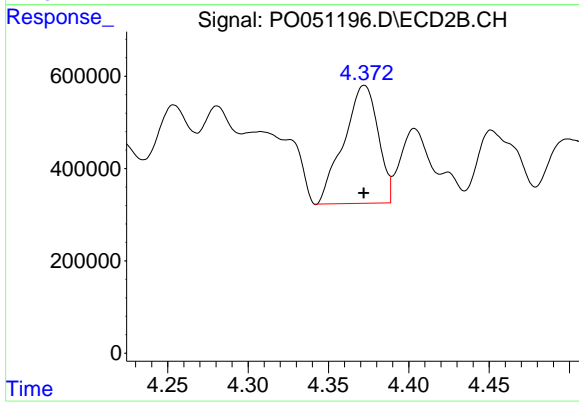
Manual Integrations
APPROVED
 SOHIL
 11/12/2018 6:25:06 AM



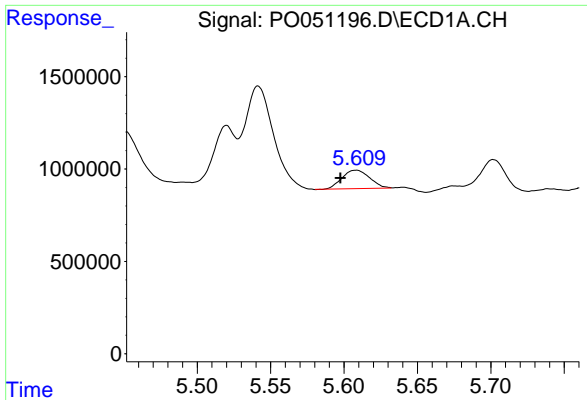
#16 AR-1242-1
 R.T.: 4.334 min
 Delta R.T.: -0.022 min
 Response: 57648
 Conc: 10.02 ng/ml m



#17 AR-1242-2
 R.T.: 5.541 min
 Delta R.T.: 0.004 min
 Response: 7195926
 Conc: 462.93 ng/ml m



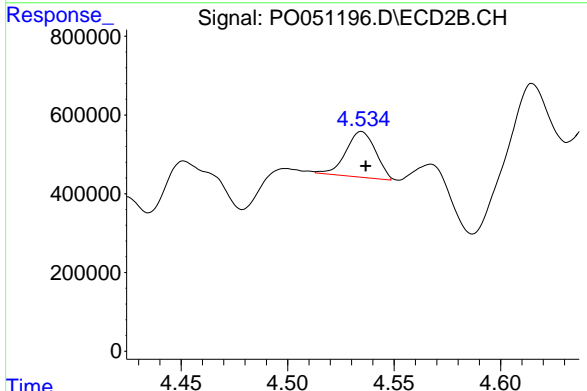
#17 AR-1242-2
 R.T.: 4.372 min
 Delta R.T.: 0.000 min
 Response: 3825638
 Conc: 394.49 ng/ml m



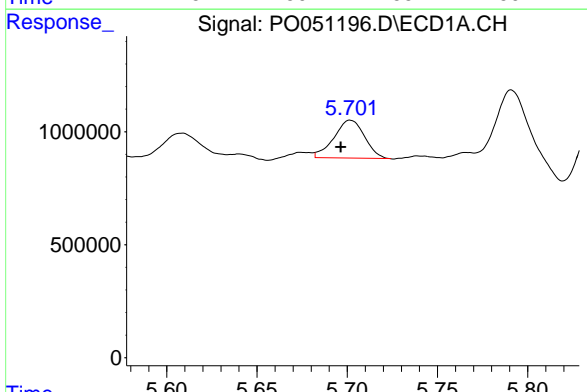
#18 AR-1242-3
 R.T.: 5.609 min
 Delta R.T.: 0.011 min
 Response: 1307958
 Conc: 140.67 ng/ml m

Instrument :
 ECD_O
ClientSampled :
 JC-03-110218-A

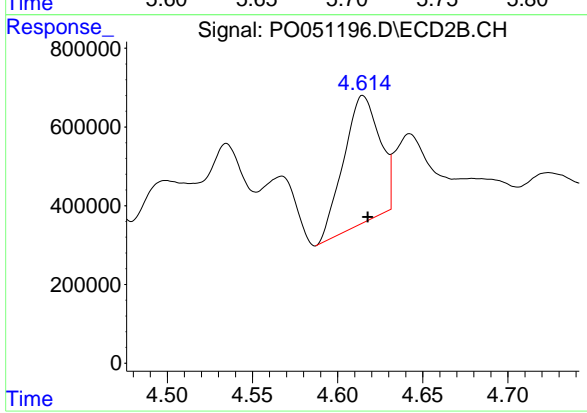
Manual Integrations
APPROVED
 SOHIL
 11/12/2018 6:25:06 AM



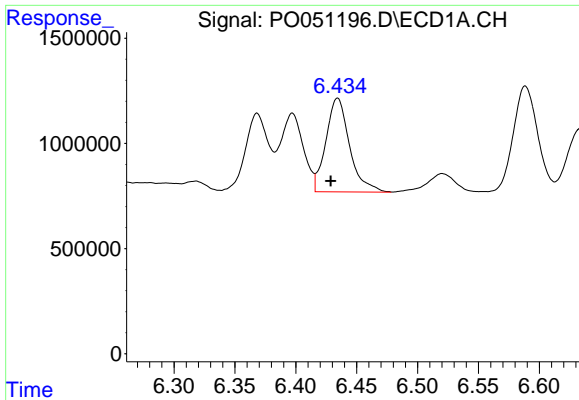
#18 AR-1242-3
 R.T.: 4.534 min
 Delta R.T.: -0.002 min
 Response: 1125237
 Conc: 229.57 ng/ml m



#19 AR-1242-4
 R.T.: 5.701 min
 Delta R.T.: 0.005 min
 Response: 1979946
 Conc: 263.31 ng/ml m



#19 AR-1242-4
 R.T.: 4.615 min
 Delta R.T.: -0.003 min
 Response: 4734394
 Conc: 987.51 ng/ml

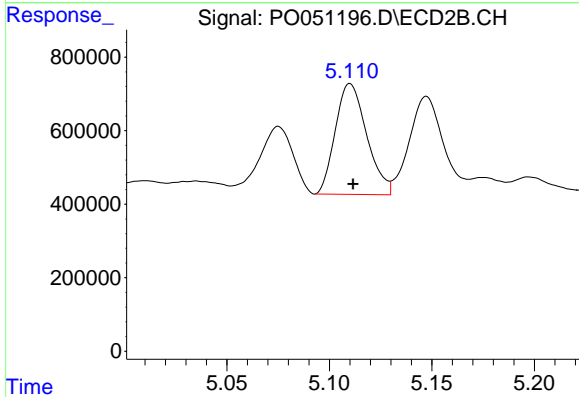


#20 AR-1242-5

R.T.: 6.434 min
 Delta R.T.: 0.005 min
 Response: 6017352
 Conc: 804.16 ng/ml m

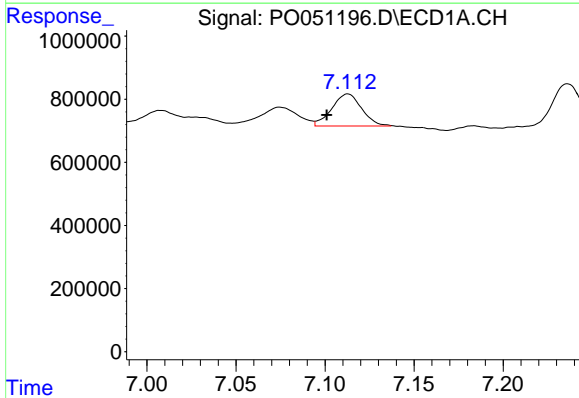
Instrument :
 ECD_O
ClientSampled :
 JC-03-110218-A

Manual Integrations
APPROVED
 SOHIL
 11/12/2018 6:25:06 AM



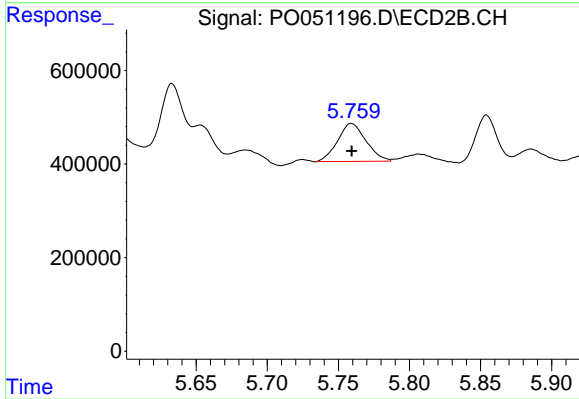
#20 AR-1242-5

R.T.: 5.110 min
 Delta R.T.: -0.001 min
 Response: 3208522
 Conc: 498.09 ng/ml



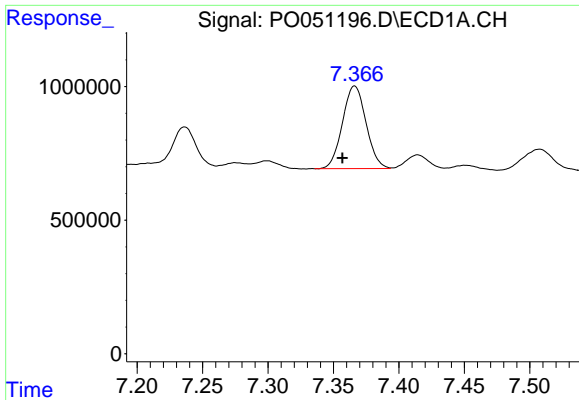
#31 AR-1260-1

R.T.: 7.112 min
 Delta R.T.: 0.011 min
 Response: 1181944
 Conc: 77.41 ng/ml m



#31 AR-1260-1

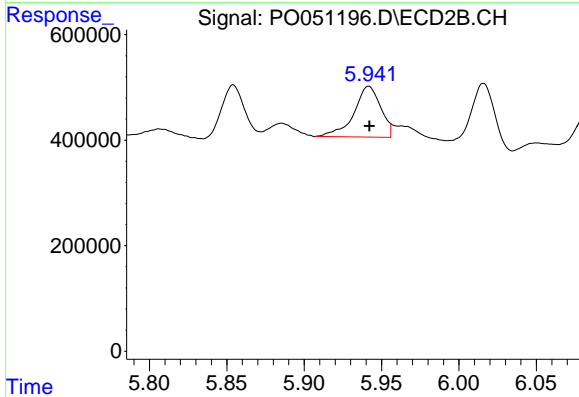
R.T.: 5.759 min
 Delta R.T.: 0.000 min
 Response: 1127596
 Conc: 85.61 ng/ml m



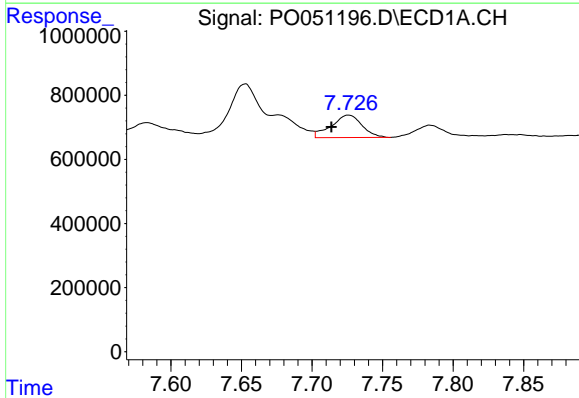
#32 AR-1260-2
 R.T.: 7.366 min
 Delta R.T.: 0.009 min
 Response: 3880225
 Conc: 198.43 ng/ml m

Instrument :
 ECD_O
 ClientSampled :
 JC-03-110218-A

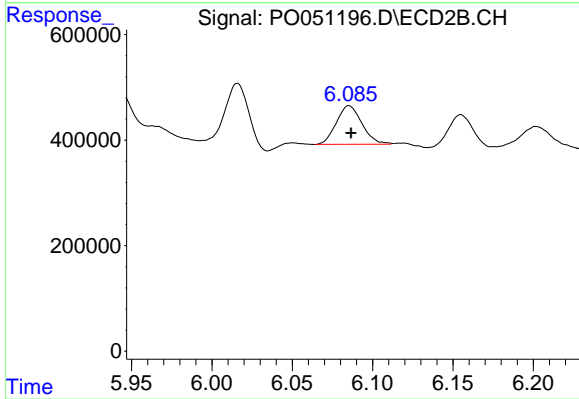
Manual Integrations
 APPROVED
 SOHIL
 11/12/2018 6:25:06 AM



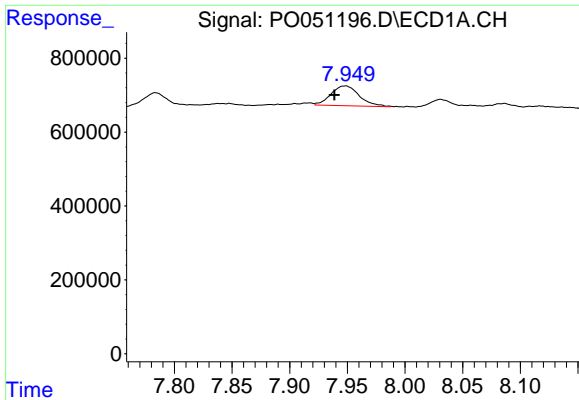
#32 AR-1260-2
 R.T.: 5.941 min
 Delta R.T.: 0.000 min
 Response: 1156144
 Conc: 62.59 ng/ml m



#33 AR-1260-3
 R.T.: 7.726 min
 Delta R.T.: 0.012 min
 Response: 1061416
 Conc: 84.13 ng/ml



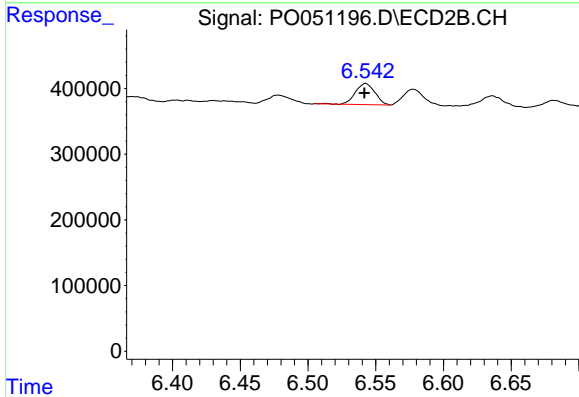
#33 AR-1260-3
 R.T.: 6.085 min
 Delta R.T.: -0.002 min
 Response: 811611
 Conc: 52.45 ng/ml m



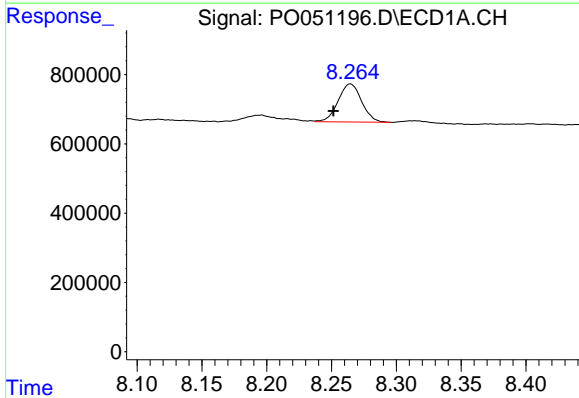
#34 AR-1260-4
 R.T.: 7.949 min
 Delta R.T.: 0.010 min
 Response: 913464
 Conc: 64.91 ng/ml m

Instrument :
 ECD_O
ClientSampleId :
 JC-03-110218-A

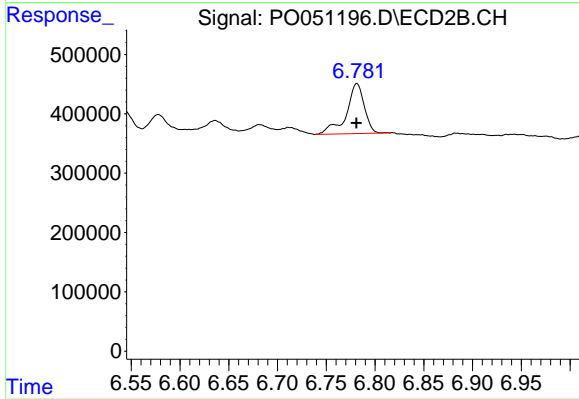
Manual Integrations
APPROVED
 SOHIL
 11/12/2018 6:25:06 AM



#34 AR-1260-4
 R.T.: 6.543 min
 Delta R.T.: 0.001 min
 Response: 322549
 Conc: 30.32 ng/ml



#35 AR-1260-5
 R.T.: 8.265 min
 Delta R.T.: 0.013 min
 Response: 1389730
 Conc: 48.23 ng/ml



#35 AR-1260-5
 R.T.: 6.781 min
 Delta R.T.: 0.000 min
 Response: 1085230
 Conc: 37.44 ng/ml