

Data Path : Z:\pestpcbsrv\HPCHEM1\ECD_O\Data\P0110819\
 Data File : P0063589.D
 Signal(s) : Signal #1: ECD1A.CH Signal #2: ECD2B.CH
 Acq On : 08 Nov 2019 11:32
 Operator : SM/AJ
 Sample : AR1660CCC500
 Misc :
 ALS Vial : 3 Sample Multiplier: 1

Instrument :
 ECD_O
ClientSampleId :
 AR1660CCC500

Manual Integrations
APPROVED
 Ankita
 11/11/2019 8:58:49 AM

Integration File signal 1: autoint1.e
 Integration File signal 2: autoint2.e
 Quant Time: Nov 08 12:37:44 2019
 Quant Method : Z:\pestpcbsrv\HPCHEM1\ECD_O\methods\P0110719.M
 Quant Title : GC EXTRACTABLES
 QLast Update : Fri Nov 08 04:54:26 2019
 Response via : Initial Calibration
 Integrator: ChemStation 6890 Scale Mode: Small noise peaks clipped

Volume Inj. : 2 µl
 Signal #1 Phase : ZB-MR1 Signal #2 Phase: ZB-MR2
 Signal #1 Info : 30Mx0.32mmx 0.50µ Signal #2 Info : 30M x 0.32mm x 0.25µm

Compound	RT#1	RT#2	Resp#1	Resp#2	ng/ml	ng/ml

System Monitoring Compounds						
1) SA Tetrachlo...	4.325	3.576	1871060	1257747	56.544	59.652
2) SA Decachlor...	9.950	8.552	2476009	1428938	45.123	48.207
Target Compounds						
3) L1 AR-1016-1	5.486	4.656	758019	495665	546.336	588.462
4) L1 AR-1016-2	5.508	4.675	1104926	683498	547.298	599.759
5) L1 AR-1016-3	5.569	4.850	702079	368205	553.223	582.221
6) L1 AR-1016-4	5.667	4.890	573765	305292	553.808	574.686
7) L1 AR-1016-5	5.959	5.102	609302	399211	544.395	588.682m
31) L7 AR-1260-1	7.077	6.131	1188951	763494	494.724	539.777
32) L7 AR-1260-2	7.334	6.317	1451438	943295	480.530	533.294
33) L7 AR-1260-3	7.690	6.472	1141368	869255	493.216	535.024
34) L7 AR-1260-4	7.915	6.942	1328690	739940	478.774	524.489
35) L7 AR-1260-5	8.226	7.181	2556873	1715888	460.849	509.347

(f)=RT Delta > 1/2 Window (#)=Amounts differ by > 25% (m)=manual int.

Data Path : Z:\pestpcbsrv\HPCHEM1\ECD_O\Data\PO110819\
 Data File : PO063589.D
 Signal(s) : Signal #1: ECD1A.CH Signal #2: ECD2B.CH
 Acq On : 08 Nov 2019 11:32
 Operator : SM/AJ
 Sample : AR1660CCC500
 Misc :
 ALS Vial : 3 Sample Multiplier: 1

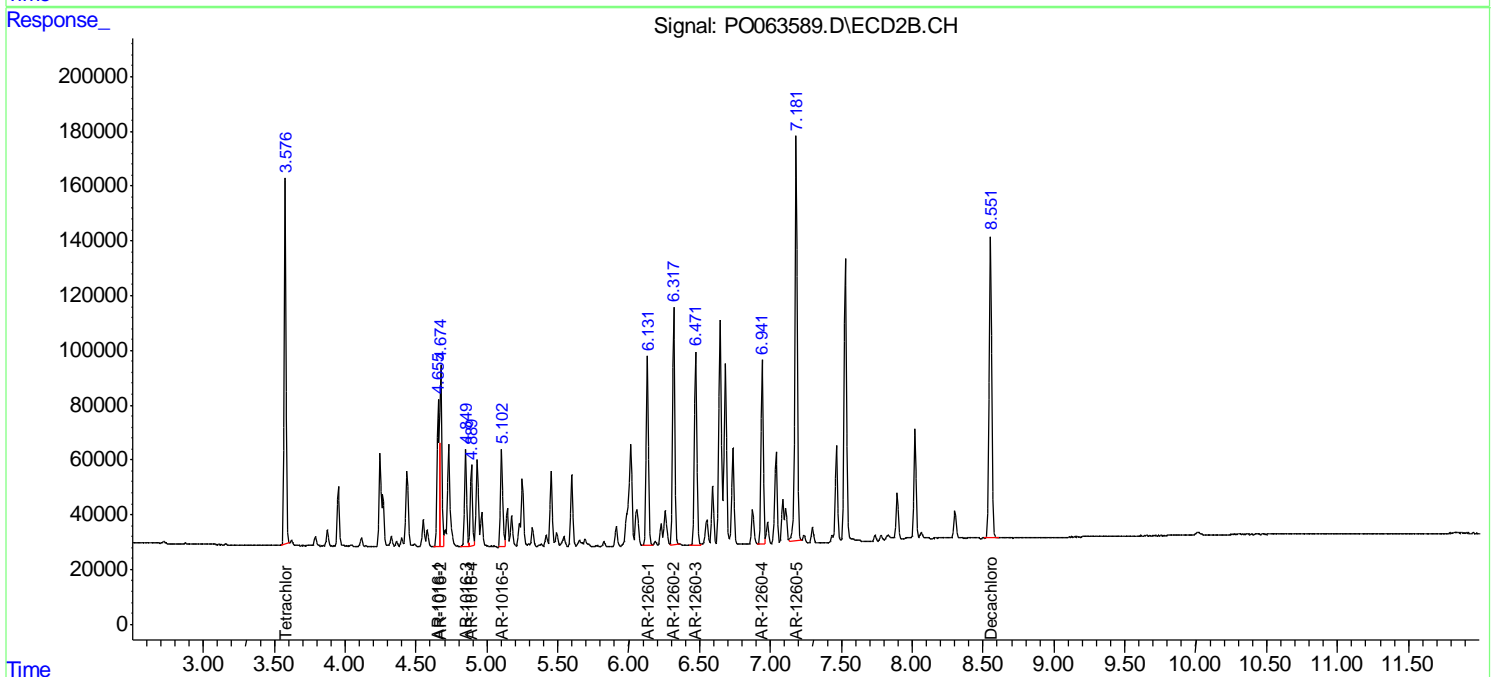
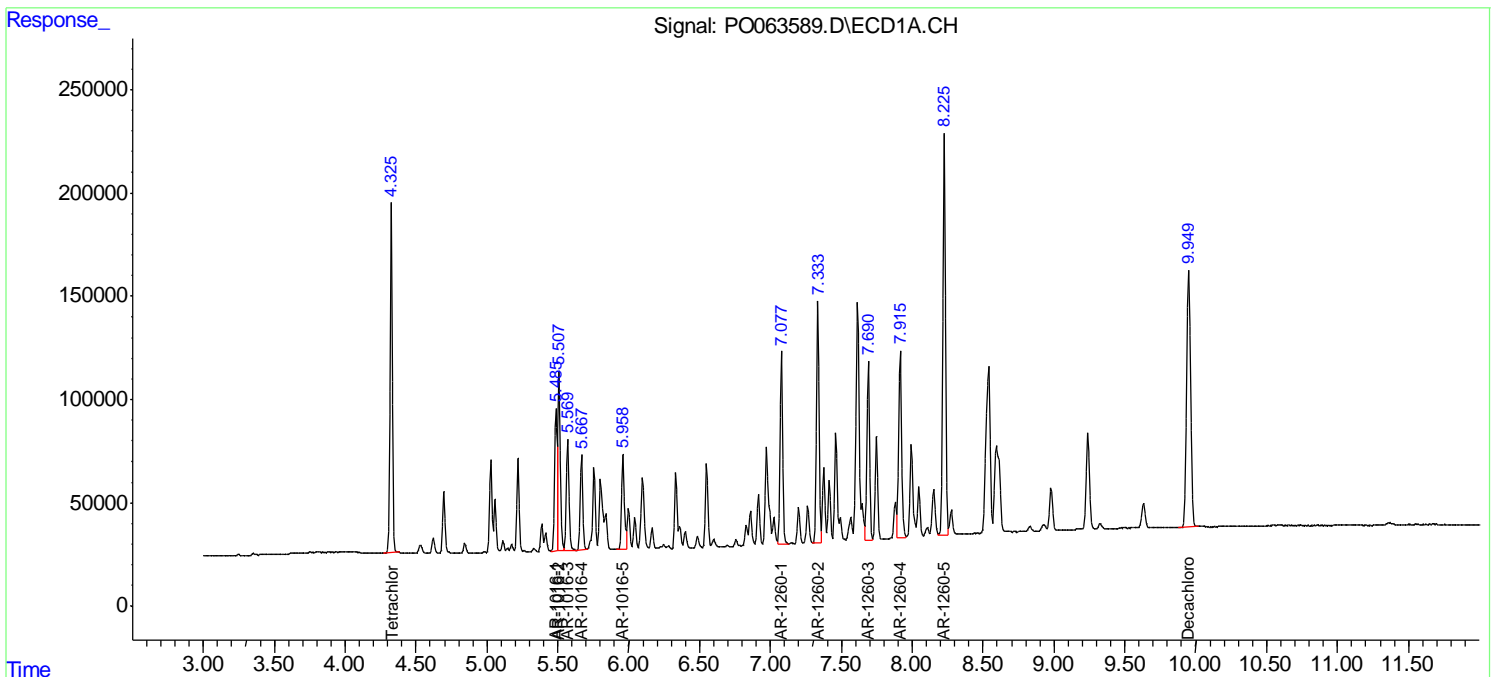
Instrument :
 ECD_O
 Client Sampled :
 AR1660CCC500

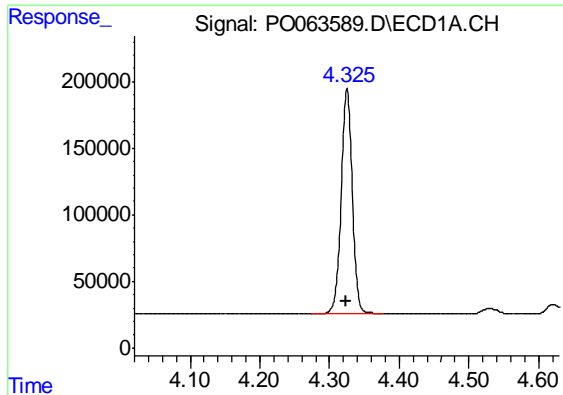
Manual Integrations
 APPROVED

Ankita
 11/11/2019 8:58:49 AM

Integration File signal 1: autoint1.e
 Integration File signal 2: autoint2.e
 Quant Time: Nov 08 12:37:44 2019
 Quant Method : Z:\pestpcbsrv\HPCHEM1\ECD_O\methods\PO110719.M
 Quant Title : GC EXTRACTABLES
 QLast Update : Fri Nov 08 04:54:26 2019
 Response via : Initial Calibration
 Integrator: ChemStation 6890 Scale Mode: Small noise peaks clipped

Volume Inj. : 2 µl
 Signal #1 Phase : ZB-MR1 Signal #2 Phase: ZB-MR2
 Signal #1 Info : 30Mx0.32mmx 0.50µ Signal #2 Info : 30M x 0.32mm x 0.25µm





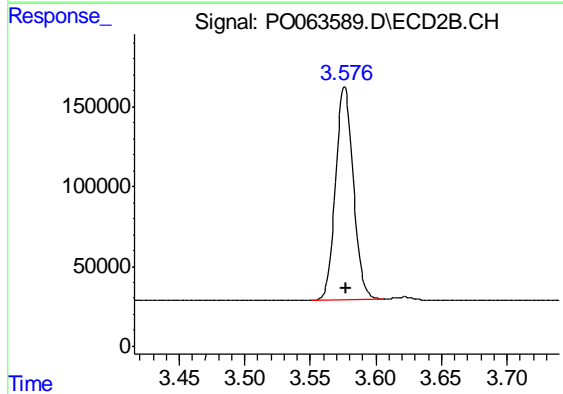
#1 Tetrachloro-m-xylene

R.T.: 4.325 min
 Delta R.T.: 0.001 min
 Response: 1871060
 Conc: 56.54 ng/ml

Instrument :
 ECD_O
 ClientSampleId :
 AR1660CCC500

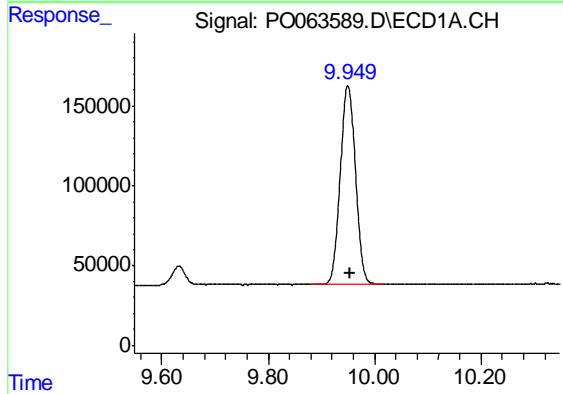
Manual Integrations
 APPROVED

Ankita
 11/11/2019 8:58:49 AM



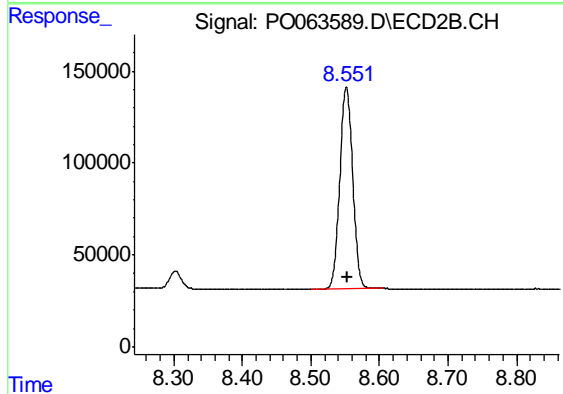
#1 Tetrachloro-m-xylene

R.T.: 3.576 min
 Delta R.T.: 0.000 min
 Response: 1257747
 Conc: 59.65 ng/ml



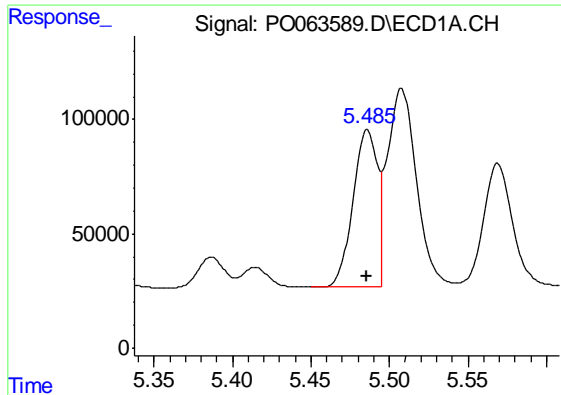
#2 Decachlorobiphenyl

R.T.: 9.950 min
 Delta R.T.: -0.003 min
 Response: 2476009
 Conc: 45.12 ng/ml



#2 Decachlorobiphenyl

R.T.: 8.552 min
 Delta R.T.: -0.003 min
 Response: 1428938
 Conc: 48.21 ng/ml



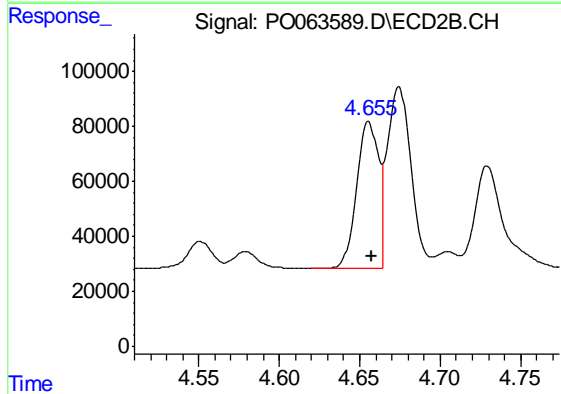
#3 AR-1016-1

R.T.: 5.486 min
 Delta R.T.: 0.000 min
 Response: 758019
 Conc: 546.34 ng/ml

Instrument :
 ECD_O
 ClientSampled :
 AR1660CCC500

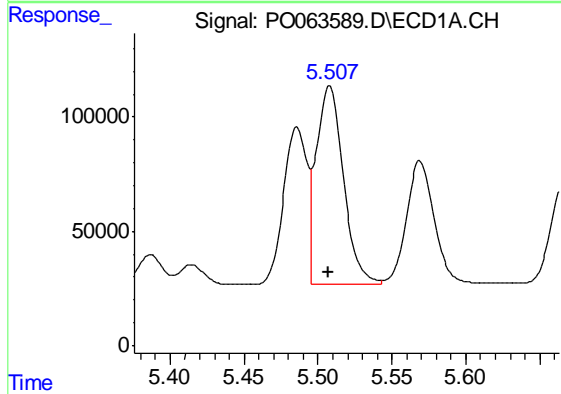
Manual Integrations
 APPROVED

Ankita
 11/11/2019 8:58:49 AM



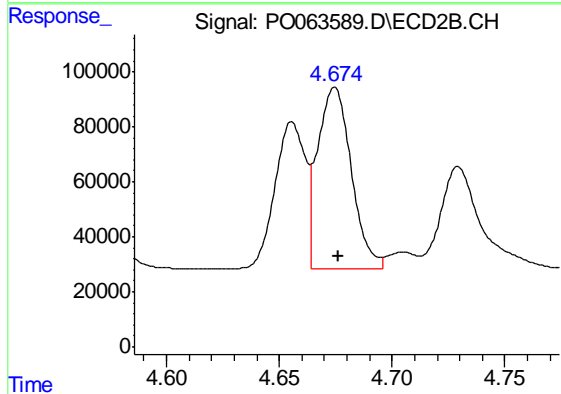
#3 AR-1016-1

R.T.: 4.656 min
 Delta R.T.: -0.002 min
 Response: 495665
 Conc: 588.46 ng/ml



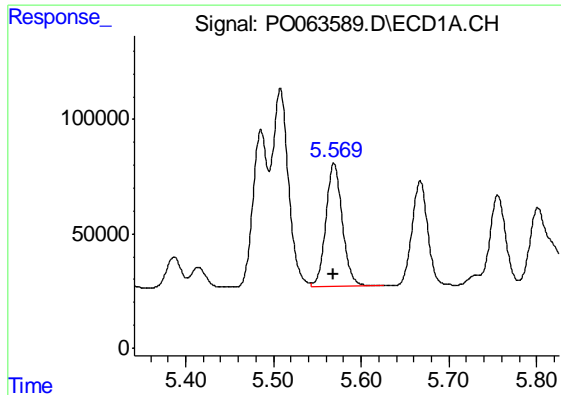
#4 AR-1016-2

R.T.: 5.508 min
 Delta R.T.: 0.000 min
 Response: 1104926
 Conc: 547.30 ng/ml



#4 AR-1016-2

R.T.: 4.675 min
 Delta R.T.: -0.002 min
 Response: 683498
 Conc: 599.76 ng/ml



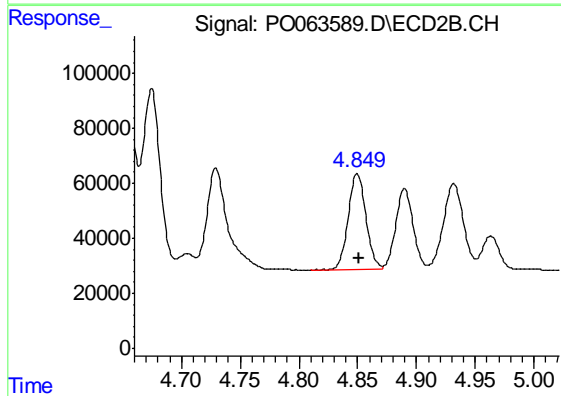
#5 AR-1016-3

R.T.: 5.569 min
 Delta R.T.: 0.001 min
 Response: 702079
 Conc: 553.22 ng/ml

Instrument :
 ECD_O
 ClientSampleId :
 AR1660CCC500

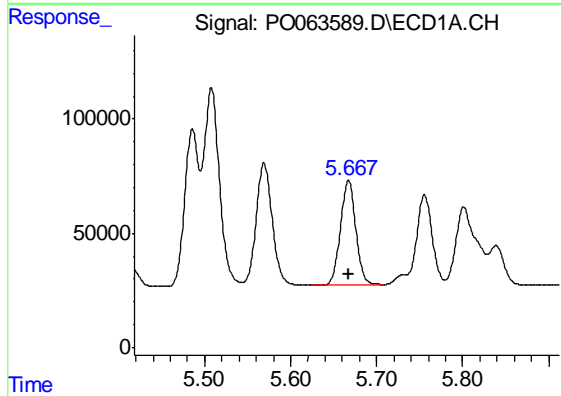
Manual Integrations
 APPROVED

Ankita
 11/11/2019 8:58:49 AM



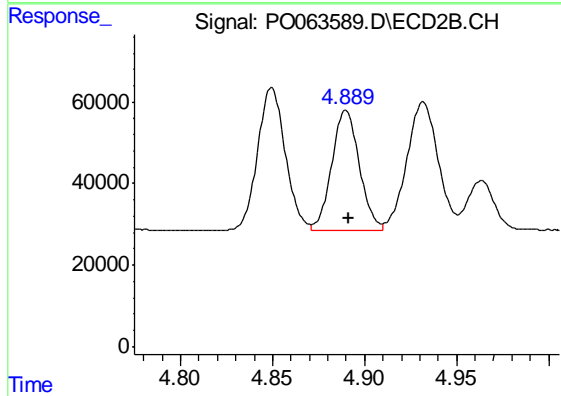
#5 AR-1016-3

R.T.: 4.850 min
 Delta R.T.: -0.002 min
 Response: 368205
 Conc: 582.22 ng/ml



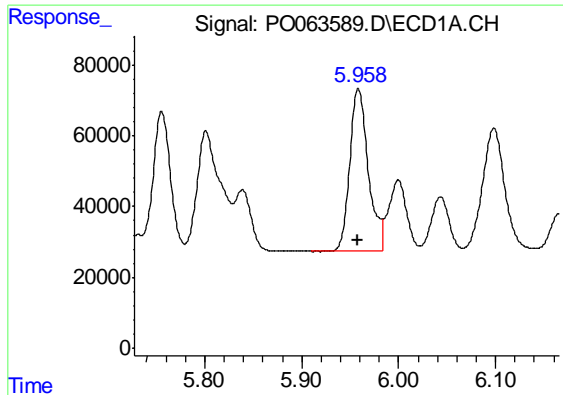
#6 AR-1016-4

R.T.: 5.667 min
 Delta R.T.: 0.000 min
 Response: 573765
 Conc: 553.81 ng/ml



#6 AR-1016-4

R.T.: 4.890 min
 Delta R.T.: -0.002 min
 Response: 305292
 Conc: 574.69 ng/ml



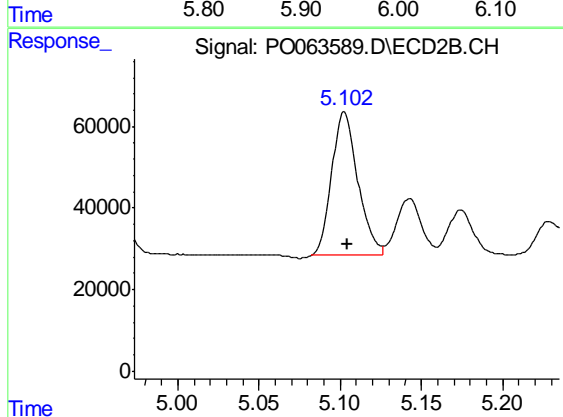
#7 AR-1016-5

R.T.: 5.959 min
 Delta R.T.: 0.000 min
 Response: 609302
 Conc: 544.40 ng/ml

Instrument :
 ECD_O
 ClientSampleId :
 AR1660CCC500

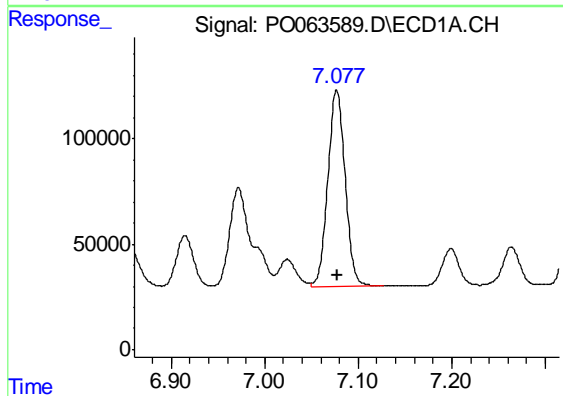
Manual Integrations
 APPROVED

Ankita
 11/11/2019 8:58:49 AM



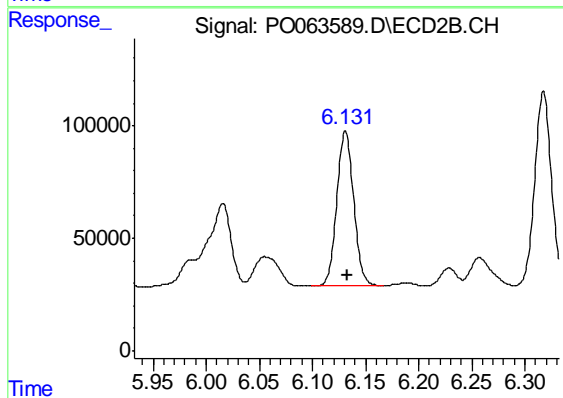
#7 AR-1016-5

R.T.: 5.102 min
 Delta R.T.: -0.002 min
 Response: 399211
 Conc: 588.68 ng/ml m



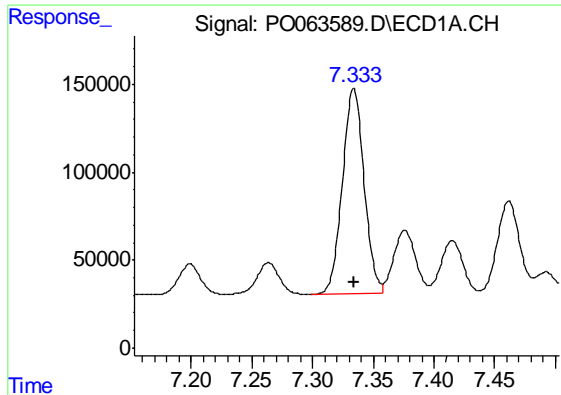
#31 AR-1260-1

R.T.: 7.077 min
 Delta R.T.: 0.000 min
 Response: 1188951
 Conc: 494.72 ng/ml



#31 AR-1260-1

R.T.: 6.131 min
 Delta R.T.: -0.002 min
 Response: 763494
 Conc: 539.78 ng/ml



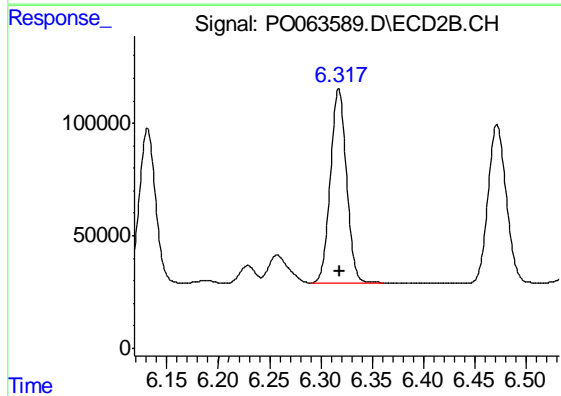
#32 AR-1260-2

R.T.: 7.334 min
 Delta R.T.: 0.000 min
 Response: 1451438
 Conc: 480.53 ng/ml

Instrument :
 ECD_O
 ClientSampleId :
 AR1660CCC500

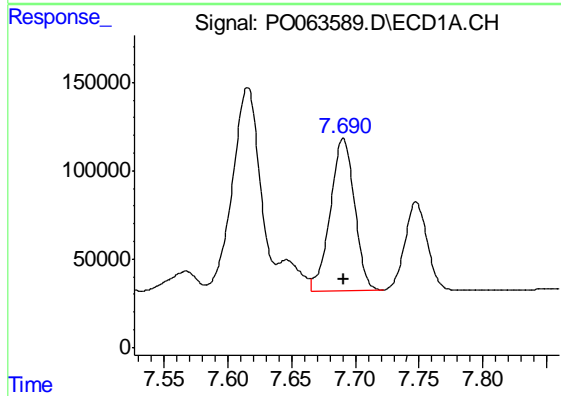
Manual Integrations
 APPROVED

Ankita
 11/11/2019 8:58:49 AM



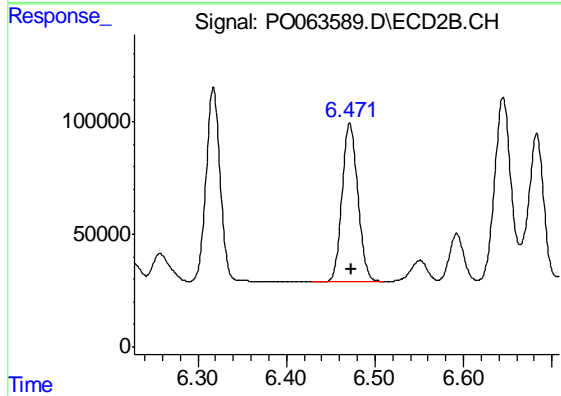
#32 AR-1260-2

R.T.: 6.317 min
 Delta R.T.: -0.001 min
 Response: 943295
 Conc: 533.29 ng/ml



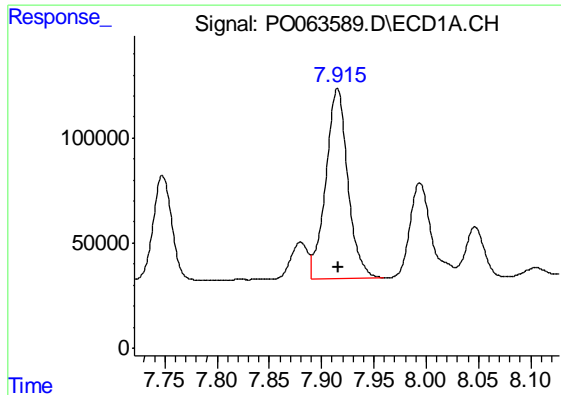
#33 AR-1260-3

R.T.: 7.690 min
 Delta R.T.: 0.000 min
 Response: 1141368
 Conc: 493.22 ng/ml



#33 AR-1260-3

R.T.: 6.472 min
 Delta R.T.: -0.002 min
 Response: 869255
 Conc: 535.02 ng/ml



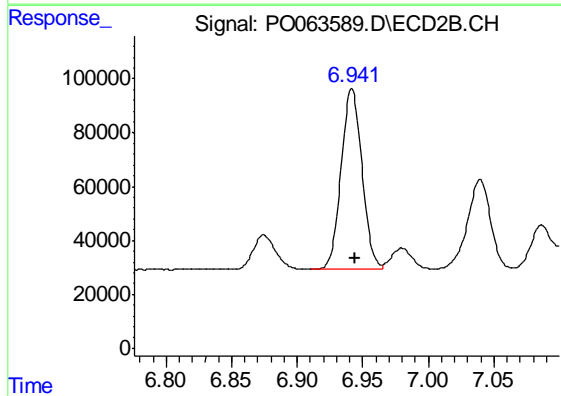
#34 AR-1260-4

R.T.: 7.915 min
 Delta R.T.: -0.001 min
 Response: 1328690
 Conc: 478.77 ng/ml

Instrument :
 ECD_O
 ClientSampleId :
 AR1660CCC500

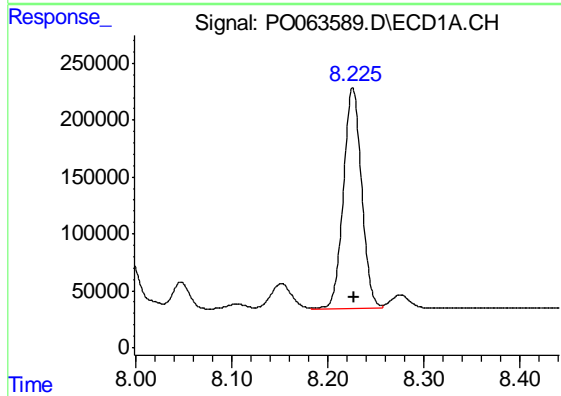
Manual Integrations
 APPROVED

Ankita
 11/11/2019 8:58:49 AM



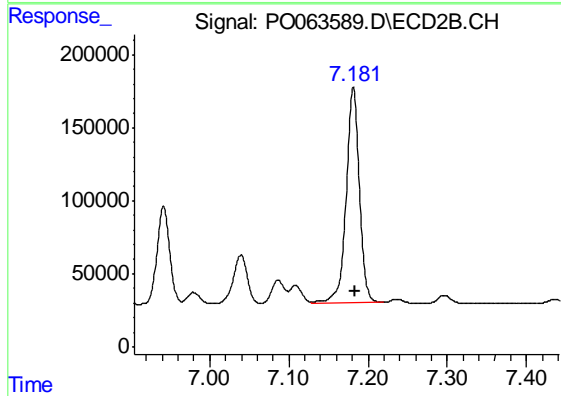
#34 AR-1260-4

R.T.: 6.942 min
 Delta R.T.: -0.002 min
 Response: 739940
 Conc: 524.49 ng/ml



#35 AR-1260-5

R.T.: 8.226 min
 Delta R.T.: -0.002 min
 Response: 2556873
 Conc: 460.85 ng/ml



#35 AR-1260-5

R.T.: 7.181 min
 Delta R.T.: -0.003 min
 Response: 1715888
 Conc: 509.35 ng/ml