

Data Path : Z:\pestpcbsrv\HPCHEM1\ECD_0\Data\PO110823\
 Data File : PO099534.D
 Signal(s) : Signal #1: ECD1A.ch Signal #2: ECD2B.ch
 Acq On : 08 Nov 2023 11:10
 Operator : YP/AJ
 Sample : 05247-01MS
 Misc :
 ALS Vial : 11 Sample Multiplier: 1

Instrument :
 ECD_0
 ClientSampleId :

Integration File signal 1: autoint1.e
 Integration File signal 2: autoint2.e
 Quant Time: Nov 08 12:18:32 2023
 Quant Method : Z:\pestpcbsrv\HPCHEM1\ECD_0\methods\PO102523.M
 Quant Title : GC EXTRACTABLES
 QLast Update : Wed Oct 25 06:04:36 2023
 Response via : Initial Calibration
 Integrator: ChemStation

Volume Inj. : 2 µl
 Signal #1 Phase : ZB-MR1 Signal #2 Phase: ZB-MR2
 Signal #1 Info : 30Mx0.32mmx 0.50µ Signal #2 Info : 30M x 0.32mm x 0.25µm

Compound	RT#1	RT#2	Resp#1	Resp#2	ng/ml	ng/ml
System Monitoring Compounds						
1) SA Tetrachlo...	4.467	3.621	32772257	10990215	16.586	15.271
2) SA Decachlor...	10.266	8.609	16944913	7471454	14.958	13.925
Target Compounds						
3) L1 AR-1016-1	5.662	4.718	41967051	17879307	762.118	798.399
4) L1 AR-1016-2	5.662	4.718	41967051	17879307	507.524	572.016
5) L1 AR-1016-3	5.724	4.893	26933563	8443019	523.265	498.620
6) L1 AR-1016-4	5.823	4.935	18571353	7183875	456.934	496.888
7) L1 AR-1016-5	6.119	5.147	21128081	7484943	497.797	400.653
8) L2 AR-1221-1	4.673	3.832	4706455	1224212	189.560	131.779 #
9) L2 AR-1221-2	4.763	3.919	4510995	1913663	243.847	295.149
10) L2 AR-1221-3	4.839	3.994	18163263	6841231	335.260	338.221
11) L3 AR-1232-1	4.839	3.994	18163263	6841231	397.031	399.102
12) L3 AR-1232-2	5.370	4.718	31946955	17879307	1352.855	1167.057
13) L3 AR-1232-3	5.662	4.893	41967051	8443019	1062.666	1055.182
14) L3 AR-1232-4	5.823	4.977	18571353	8572040	973.398	1114.153
15) L3 AR-1232-5	5.914	5.147	15300336	7484943	918.488	880.004
16) L4 AR-1242-1	5.662	4.718	41967051	17879307	969.390	1017.611
17) L4 AR-1242-2	5.662	4.718	41967051	17879307	655.251	737.786
18) L4 AR-1242-3	5.724	4.893	26933563	8443019	669.561	658.547
19) L4 AR-1242-4	5.823	4.977	18571353	8572040	593.469	608.950
20) L4 AR-1242-5	6.562	5.499	4153113	9295216	134.629	556.227 #
21) L5 AR-1248-1	5.640	4.718	28702674	17879307	844.875	1289.995 #
22) L5 AR-1248-2	5.914	4.935	15300336	7183875	292.363	361.661
23) L5 AR-1248-3	6.119	4.977	21128081	8572040	370.813	411.059
24) L5 AR-1248-4	6.524	5.147	3918666	7484943	71.860	304.470 #
25) L5 AR-1248-5	6.562	5.540	4153113	2464717	73.110	113.485 #
26) L6 AR-1254-1	6.496	5.499	17718965	9295216	269.175	262.330
27) L6 AR-1254-2	6.715	5.646	22256410	10514170	231.191	328.728 #
28) L6 AR-1254-3	7.085	6.064	12922497	16177866	144.574	330.920 #
29) L6 AR-1254-4	7.370	6.278	7258308	2623193	132.491	100.096
30) L6 AR-1254-5	7.790	6.694	70130366	30131615	1041.517	714.785 #
31) L7 AR-1260-1	7.248	6.179	36275834	19825130	506.214	562.010
32) L7 AR-1260-2	7.505	6.368	47646693	20830340	603.911	519.635
33) L7 AR-1260-3	7.866	6.520	26250478	19319330	480.664	510.919
34) L7 AR-1260-4	8.093	6.991	32162193	13741703	513.308	475.549
35) L7 AR-1260-5	8.418	7.234	55000109	30871208	513.945	512.984
36) L8 AR-1262-1	7.866	6.732	26250478	15693441	290.023	334.465
37) L8 AR-1262-2	8.418	6.991	55000109	13741703	412.581	330.990
38) L8 AR-1262-3	8.750	7.516	36878572	7112596	375.026	222.639 #
39) L8 AR-1262-4	8.824	7.580	9318004	22320852	116.315	405.988 #
40) L8 AR-1262-5	9.497	8.119	12791097	-4690035	291.098	N.D. #
41) L9 AR-1268-1	8.750	7.516	36878572	7112596	214.105	79.742 #

Data Path : Z:\pestpcbsrv\HPCHEM1\ECD_0\Data\PO110823\
 Data File : PO099534.D
 Signal(s) : Signal #1: ECD1A.ch Signal #2: ECD2B.ch
 Acq On : 08 Nov 2023 11:10
 Operator : YP/AJ
 Sample : 05247-01MS
 Misc :
 ALS Vial : 11 Sample Multiplier: 1

Instrument :
 ECD_0
 ClientSampleId :

Integration File signal 1: autoint1.e
 Integration File signal 2: autoint2.e
 Quant Time: Nov 08 12:18:32 2023
 Quant Method : Z:\pestpcbsrv\HPCHEM1\ECD_0\methods\PO102523.M
 Quant Title : GC EXTRACTABLES
 QLast Update : Wed Oct 25 06:04:36 2023
 Response via : Initial Calibration
 Integrator: ChemStation

Volume Inj. : 2 µl
 Signal #1 Phase : ZB-MR1 Signal #2 Phase: ZB-MR2
 Signal #1 Info : 30Mx0.32mmx 0.50µ Signal #2 Info : 30M x 0.32mm x 0.25µm

	Compound	RT#1	RT#2	Resp#1	Resp#2	ng/ml	ng/ml
42)	L9 AR-1268-2	8.824	7.580	9318004	22320852	59.428	282.696 #
43)	L9 AR-1268-3	9.061	7.815	1193908	12373	8.515	0.176 #
44)	L9 AR-1268-4	9.497	8.119	12791097	-4690035	255.083	N.D. #
45)	L9 AR-1268-5	9.921	8.434f	5169777	55012	12.633	0.289 #

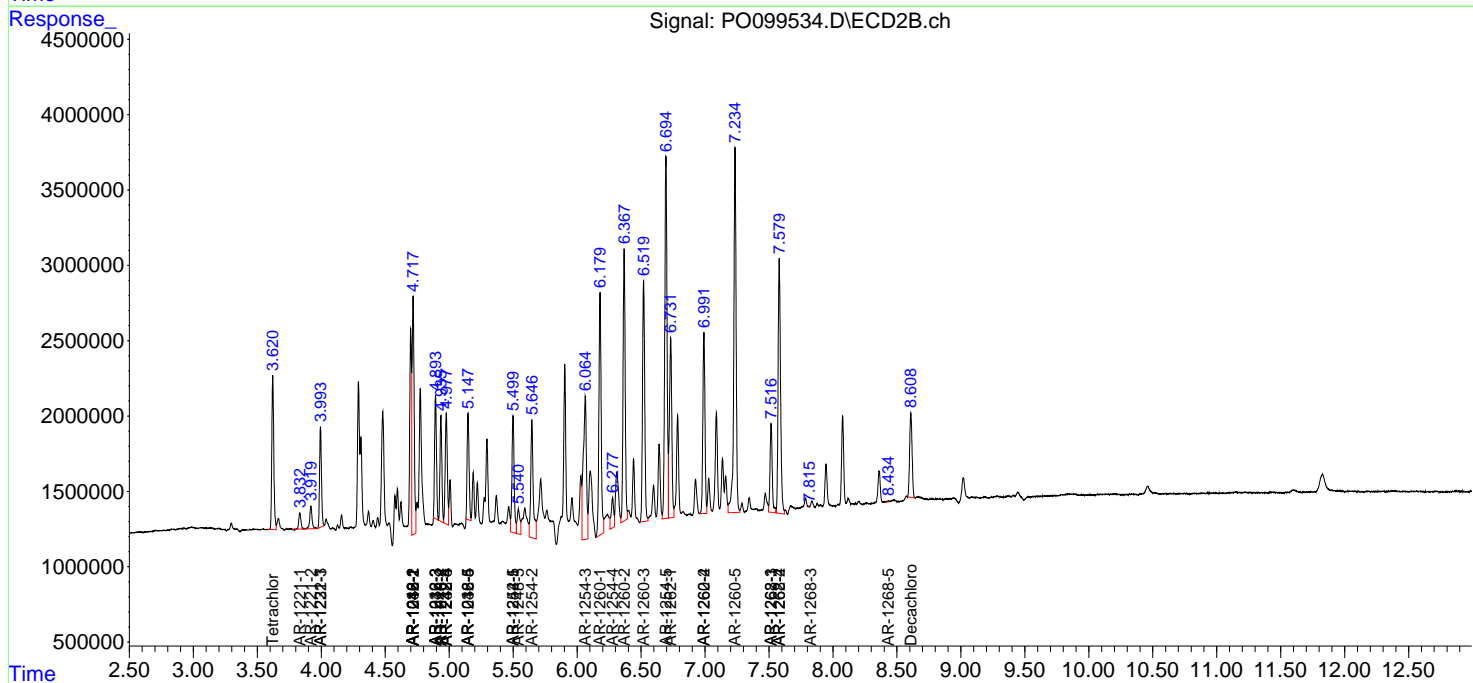
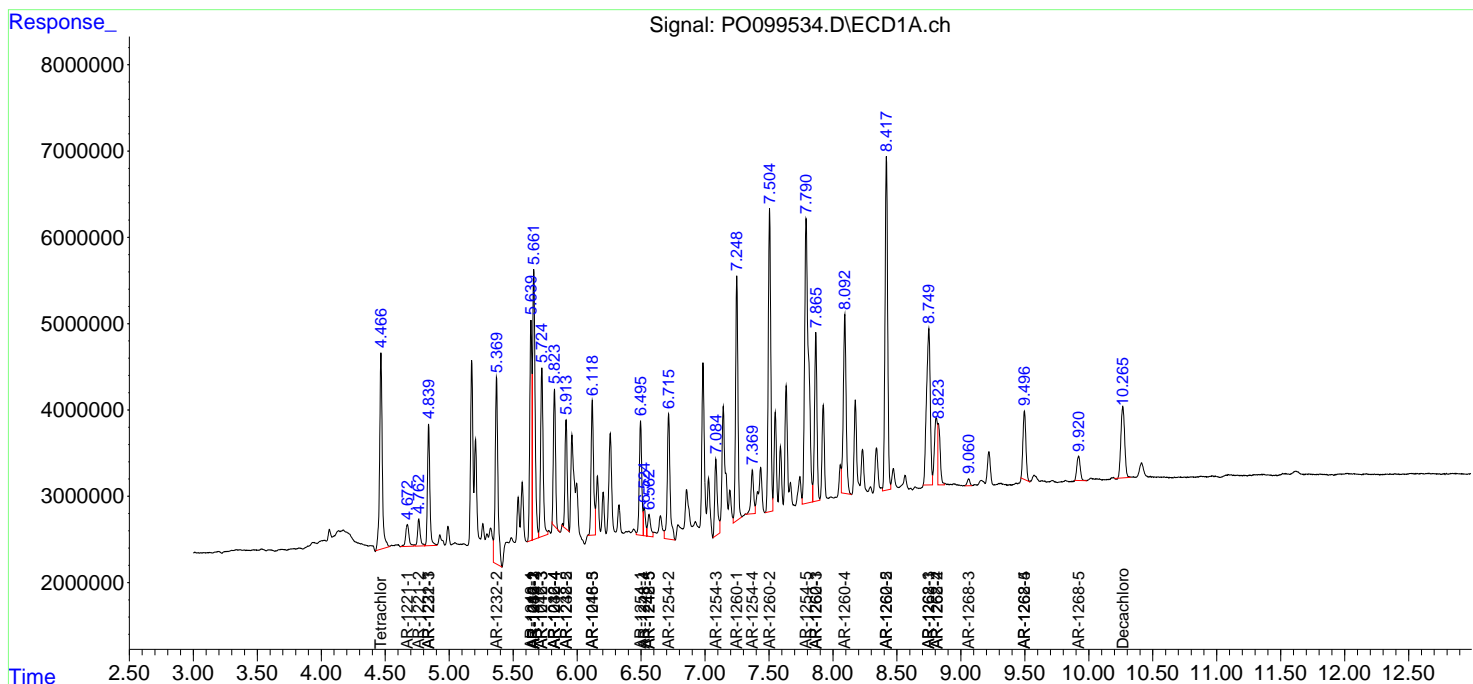
(f)=RT Delta > 1/2 Window (#)=Amounts differ by > 25% (m)=manual int.

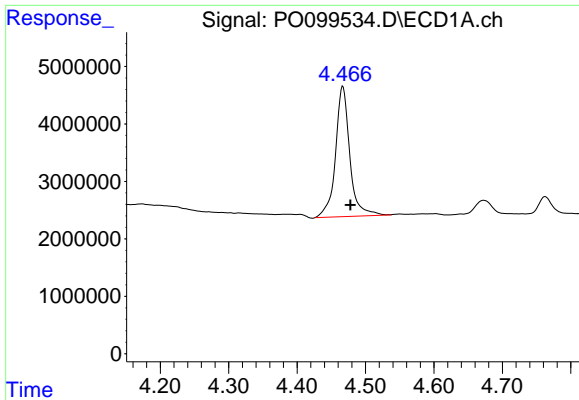
Data Path : Z:\pestpcbsrv\HPCHEM1\ECD_O\Data\PO110823\
 Data File : PO099534.D
 Signal(s) : Signal #1: ECD1A.ch Signal #2: ECD2B.ch
 Acq On : 08 Nov 2023 11:10
 Operator : YP/AJ
 Sample : 05247-01MS
 Misc :
 ALS Vial : 11 Sample Multiplier: 1

Instrument :
 ECD_O
 ClientSampleId :

Integration File signal 1: autoint1.e
 Integration File signal 2: autoint2.e
 Quant Time: Nov 08 12:18:32 2023
 Quant Method : Z:\pestpcbsrv\HPCHEM1\ECD_O\methods\PO102523.M
 Quant Title : GC EXTRACTABLES
 QLast Update : Wed Oct 25 06:04:36 2023
 Response via : Initial Calibration
 Integrator: ChemStation

Volume Inj. : 2 µl
 Signal #1 Phase : ZB-MR1 Signal #2 Phase: ZB-MR2
 Signal #1 Info : 30Mx0.32mmx 0.50µ Signal #2 Info : 30M x 0.32mm x 0.25µm

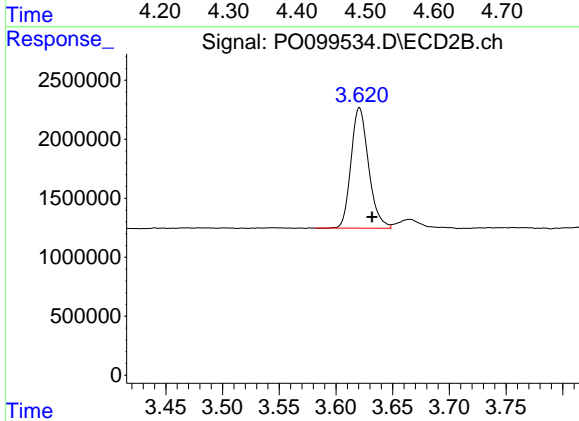




#1 Tetrachloro-m-xylene

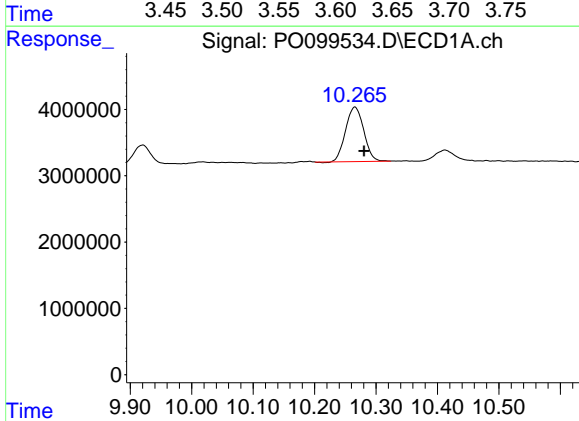
R.T.: 4.467 min
 Delta R.T.: -0.011 min
 Response: 32772257
 Conc: 16.59 ng/ml

Instrument :
 ECD_O
 ClientSampleId :



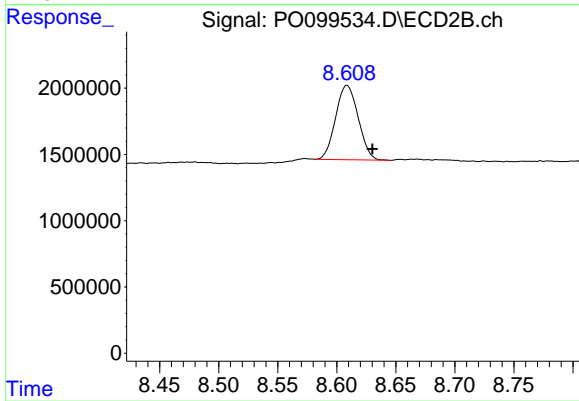
#1 Tetrachloro-m-xylene

R.T.: 3.621 min
 Delta R.T.: -0.011 min
 Response: 10990215
 Conc: 15.27 ng/ml



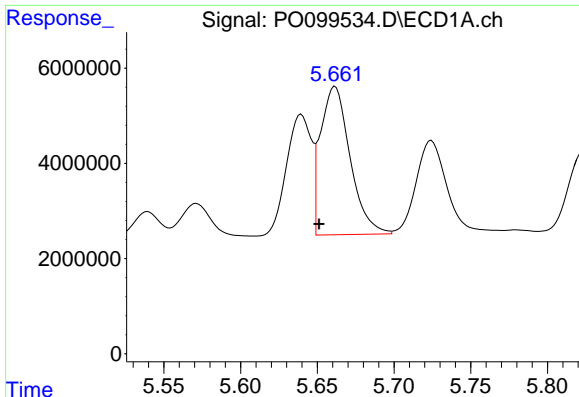
#2 Decachlorobiphenyl

R.T.: 10.266 min
 Delta R.T.: -0.014 min
 Response: 16944913
 Conc: 14.96 ng/ml



#2 Decachlorobiphenyl

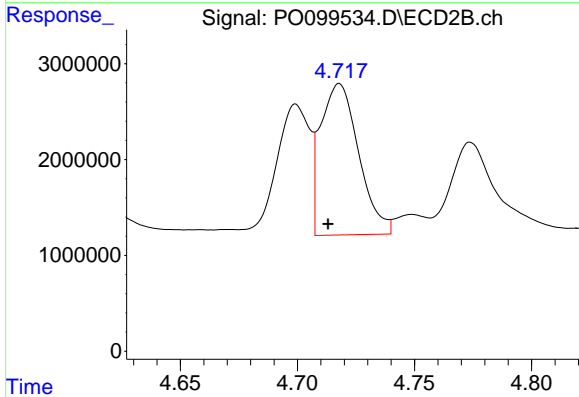
R.T.: 8.609 min
 Delta R.T.: -0.022 min
 Response: 7471454
 Conc: 13.93 ng/ml



#3 AR-1016-1

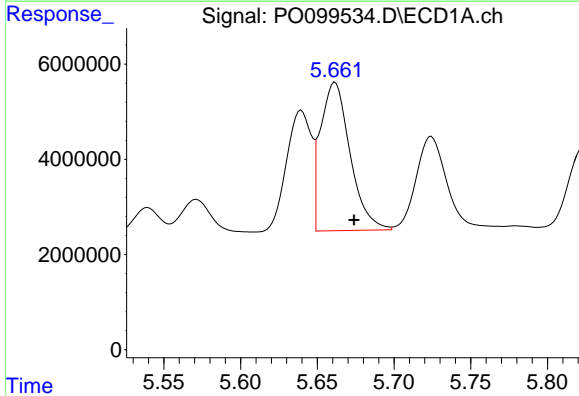
R.T.: 5.662 min
 Delta R.T.: 0.010 min
 Response: 41967051
 Conc: 762.12 ng/ml

Instrument :
 ECD_O
 ClientSampleId :



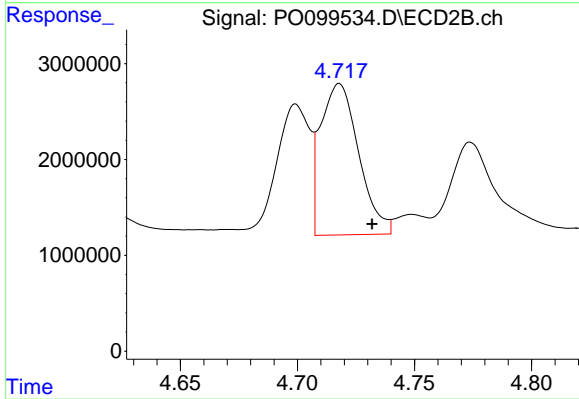
#3 AR-1016-1

R.T.: 4.718 min
 Delta R.T.: 0.005 min
 Response: 17879307
 Conc: 798.40 ng/ml



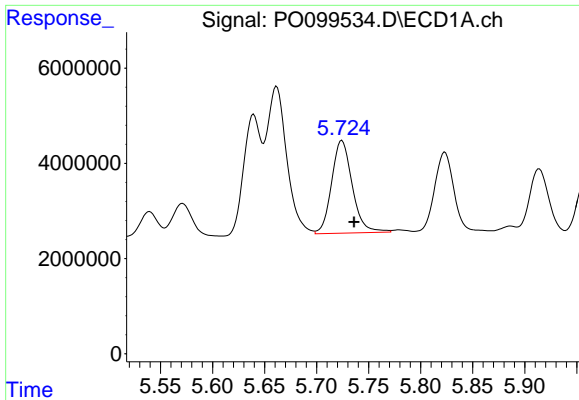
#4 AR-1016-2

R.T.: 5.662 min
 Delta R.T.: -0.012 min
 Response: 41967051
 Conc: 507.52 ng/ml



#4 AR-1016-2

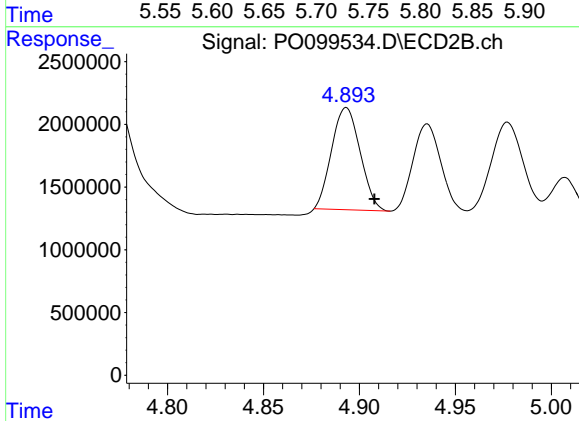
R.T.: 4.718 min
 Delta R.T.: -0.014 min
 Response: 17879307
 Conc: 572.02 ng/ml



#5 AR-1016-3

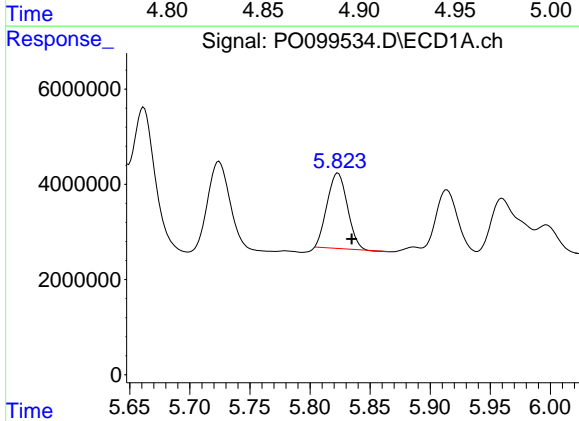
R.T.: 5.724 min
 Delta R.T.: -0.012 min
 Response: 26933563
 Conc: 523.26 ng/ml

Instrument :
 ECD_O
 ClientSampleId :



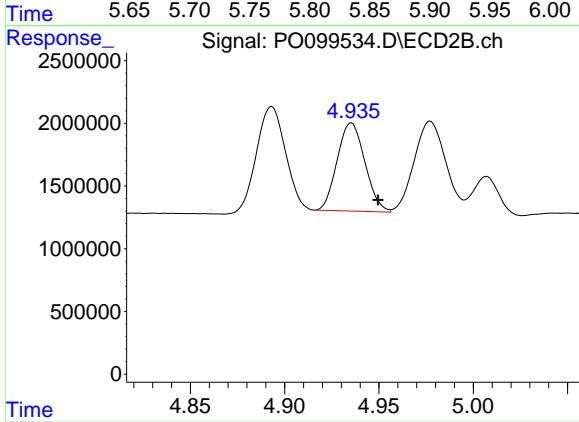
#5 AR-1016-3

R.T.: 4.893 min
 Delta R.T.: -0.015 min
 Response: 8443019
 Conc: 498.62 ng/ml



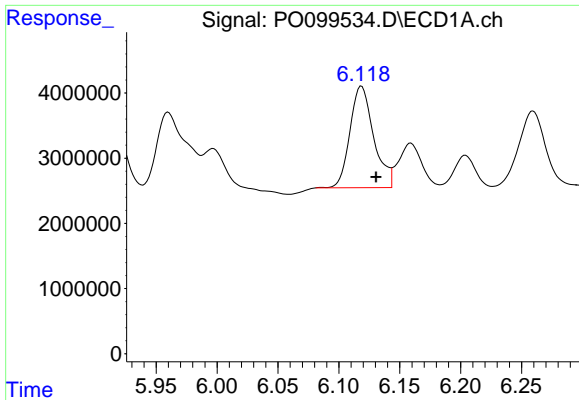
#6 AR-1016-4

R.T.: 5.823 min
 Delta R.T.: -0.011 min
 Response: 18571353
 Conc: 456.93 ng/ml



#6 AR-1016-4

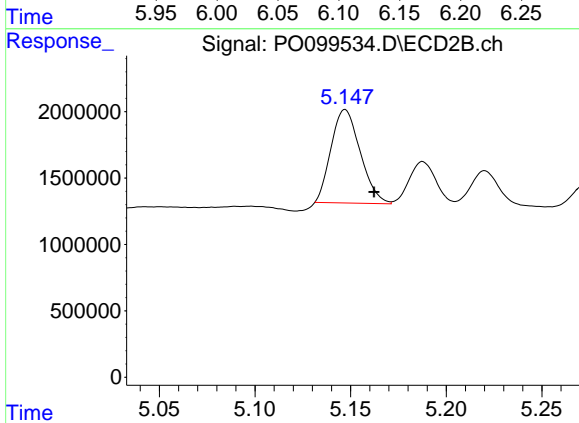
R.T.: 4.935 min
 Delta R.T.: -0.014 min
 Response: 7183875
 Conc: 496.89 ng/ml



#7 AR-1016-5

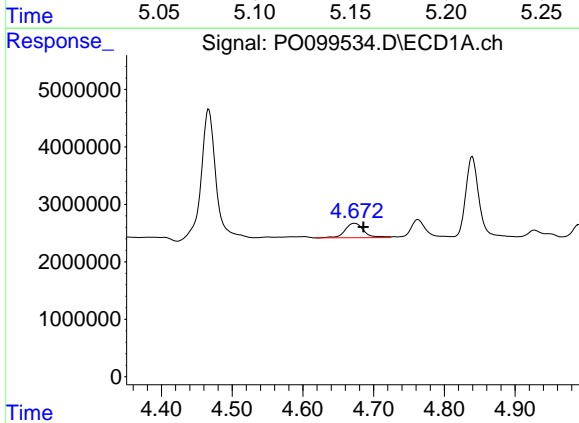
R.T.: 6.119 min
 Delta R.T.: -0.012 min
 Response: 21128081
 Conc: 497.80 ng/ml

Instrument :
 ECD_O
 ClientSampleId :



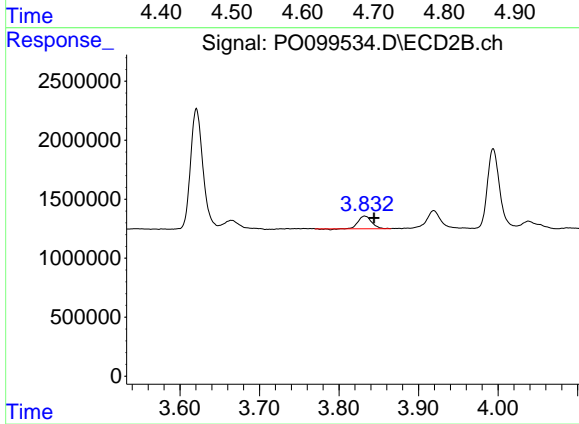
#7 AR-1016-5

R.T.: 5.147 min
 Delta R.T.: -0.015 min
 Response: 7484943
 Conc: 400.65 ng/ml



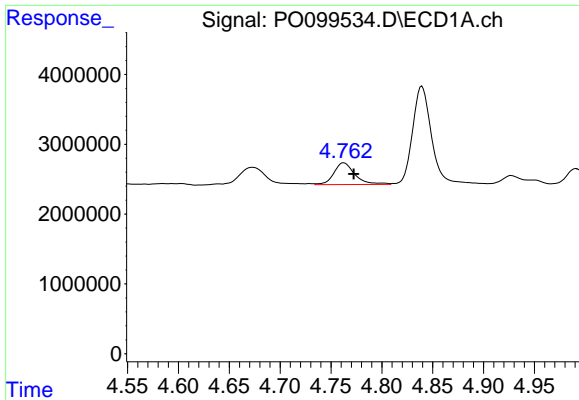
#8 AR-1221-1

R.T.: 4.673 min
 Delta R.T.: -0.013 min
 Response: 4706455
 Conc: 189.56 ng/ml



#8 AR-1221-1

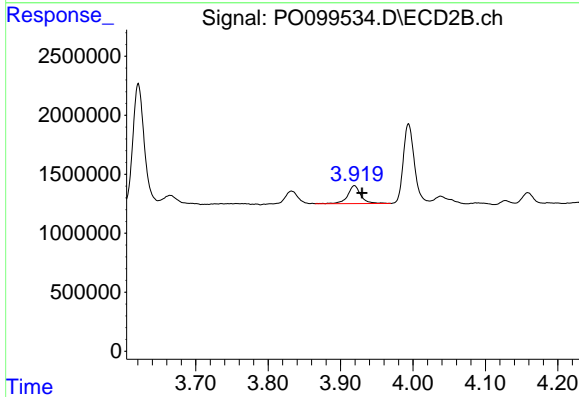
R.T.: 3.832 min
 Delta R.T.: -0.012 min
 Response: 1224212
 Conc: 131.78 ng/ml



#9 AR-1221-2

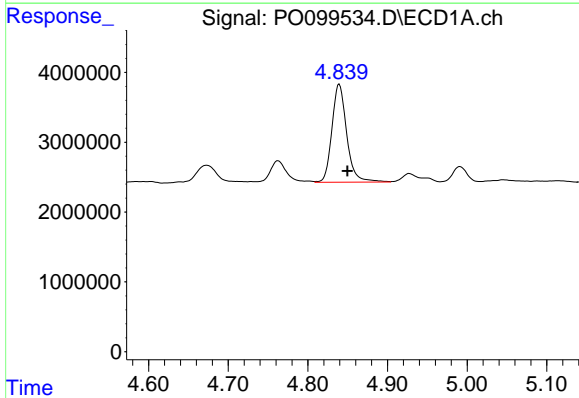
R.T.: 4.763 min
 Delta R.T.: -0.010 min
 Response: 4510995
 Conc: 243.85 ng/ml

Instrument :
 ECD_O
 ClientSampleId :



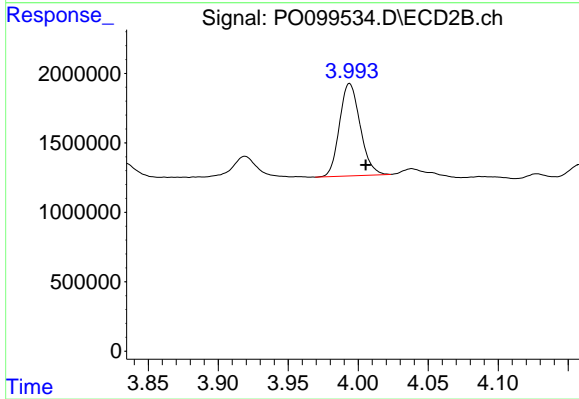
#9 AR-1221-2

R.T.: 3.919 min
 Delta R.T.: -0.010 min
 Response: 1913663
 Conc: 295.15 ng/ml



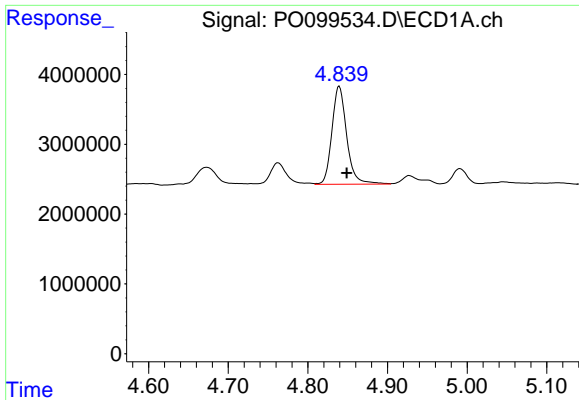
#10 AR-1221-3

R.T.: 4.839 min
 Delta R.T.: -0.010 min
 Response: 18163263
 Conc: 335.26 ng/ml



#10 AR-1221-3

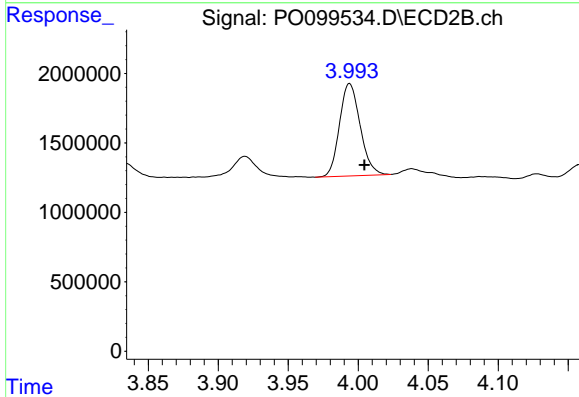
R.T.: 3.994 min
 Delta R.T.: -0.011 min
 Response: 6841231
 Conc: 338.22 ng/ml



#11 AR-1232-1

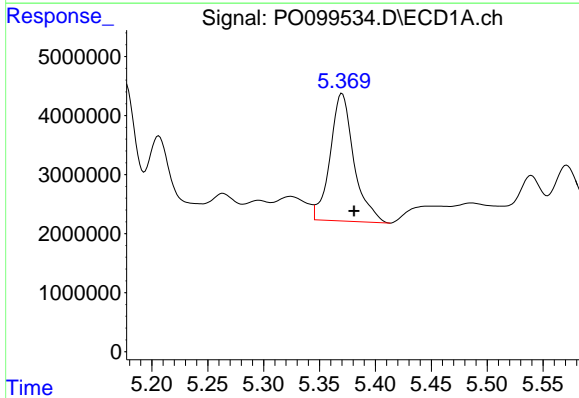
R.T.: 4.839 min
 Delta R.T.: -0.009 min
 Response: 18163263
 Conc: 397.03 ng/ml

Instrument :
 ECD_O
 ClientSampleId :



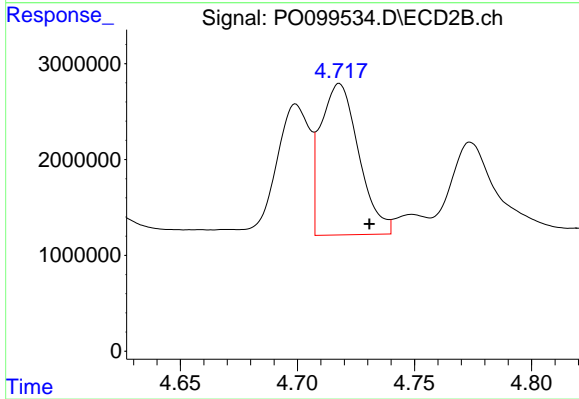
#11 AR-1232-1

R.T.: 3.994 min
 Delta R.T.: -0.011 min
 Response: 6841231
 Conc: 399.10 ng/ml



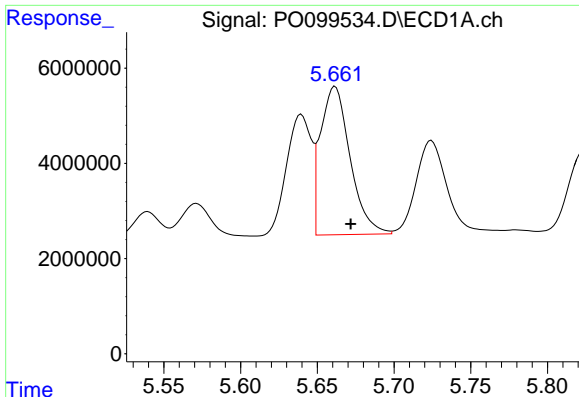
#12 AR-1232-2

R.T.: 5.370 min
 Delta R.T.: -0.011 min
 Response: 31946955
 Conc: 1352.85 ng/ml



#12 AR-1232-2

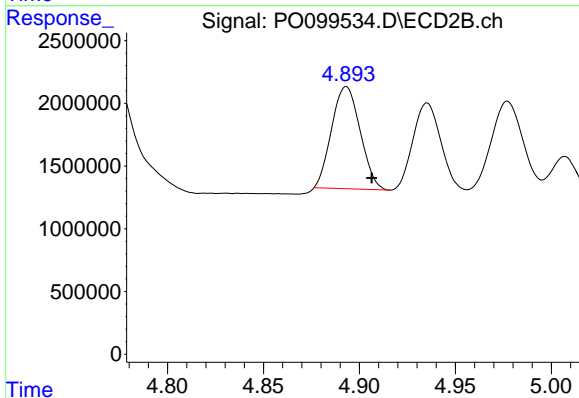
R.T.: 4.718 min
 Delta R.T.: -0.013 min
 Response: 17879307
 Conc: 1167.06 ng/ml



#13 AR-1232-3

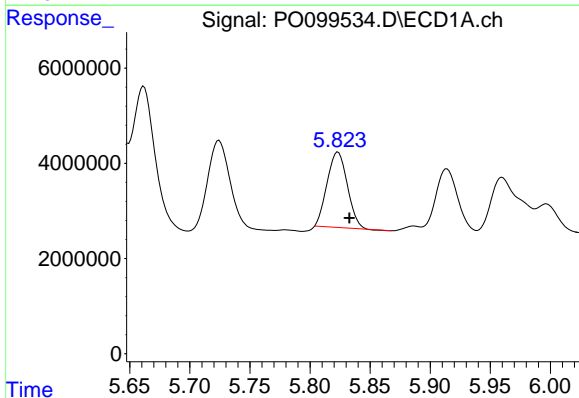
R.T.: 5.662 min
 Delta R.T.: -0.010 min
 Response: 41967051
 Conc: 1062.67 ng/ml

Instrument :
 ECD_O
 ClientSampleId :



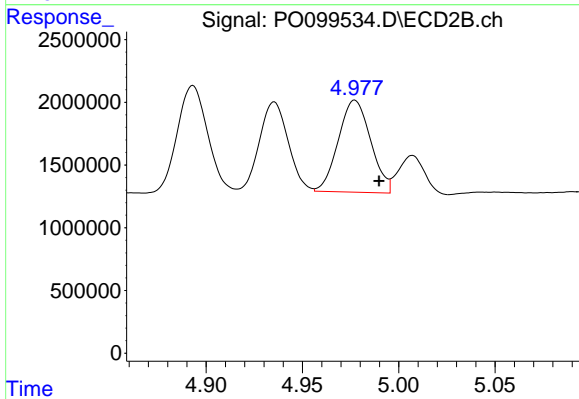
#13 AR-1232-3

R.T.: 4.893 min
 Delta R.T.: -0.013 min
 Response: 8443019
 Conc: 1055.18 ng/ml



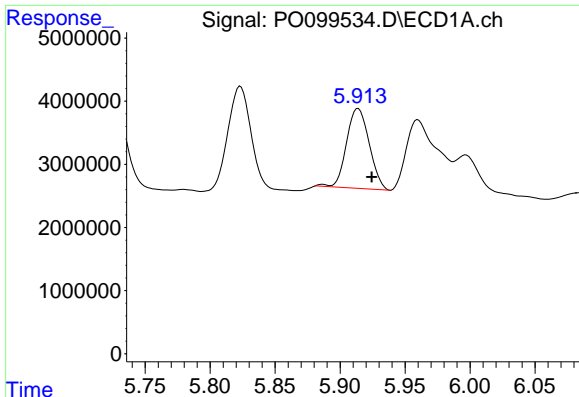
#14 AR-1232-4

R.T.: 5.823 min
 Delta R.T.: -0.009 min
 Response: 18571353
 Conc: 973.40 ng/ml



#14 AR-1232-4

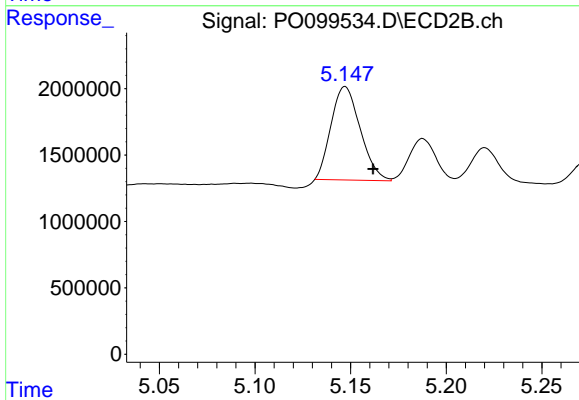
R.T.: 4.977 min
 Delta R.T.: -0.013 min
 Response: 8572040
 Conc: 1114.15 ng/ml



#15 AR-1232-5

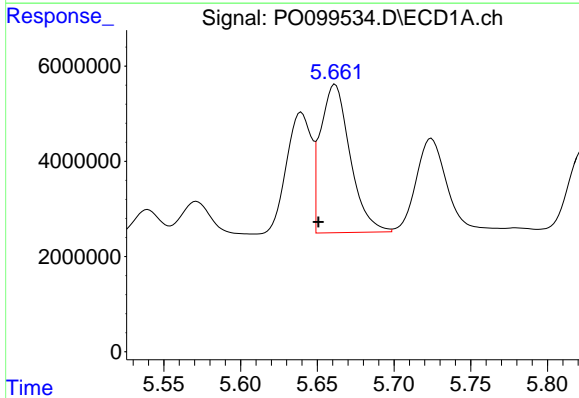
R.T.: 5.914 min
 Delta R.T.: -0.010 min
 Response: 15300336
 Conc: 918.49 ng/ml

Instrument :
 ECD_O
 ClientSampleId :



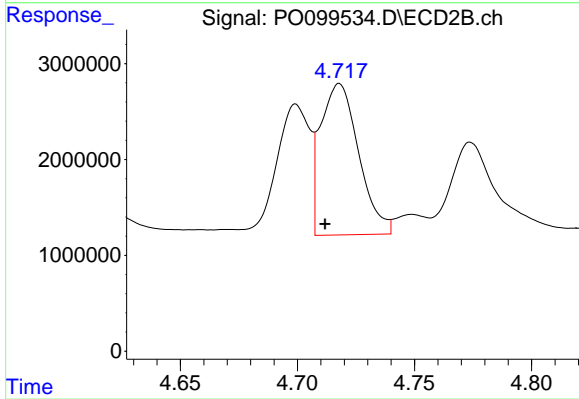
#15 AR-1232-5

R.T.: 5.147 min
 Delta R.T.: -0.015 min
 Response: 7484943
 Conc: 880.00 ng/ml



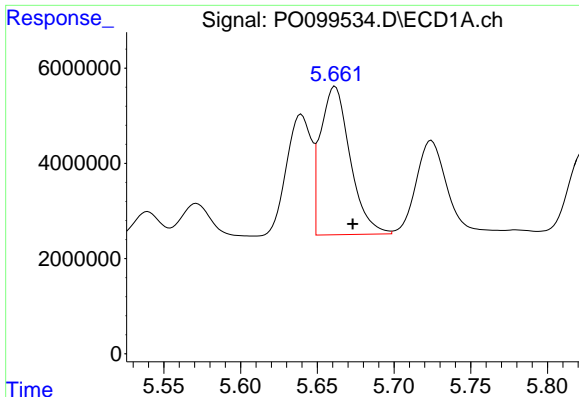
#16 AR-1242-1

R.T.: 5.662 min
 Delta R.T.: 0.011 min
 Response: 41967051
 Conc: 969.39 ng/ml



#16 AR-1242-1

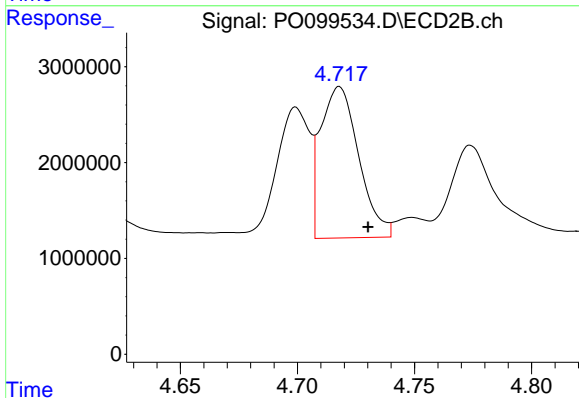
R.T.: 4.718 min
 Delta R.T.: 0.006 min
 Response: 17879307
 Conc: 1017.61 ng/ml



#17 AR-1242-2

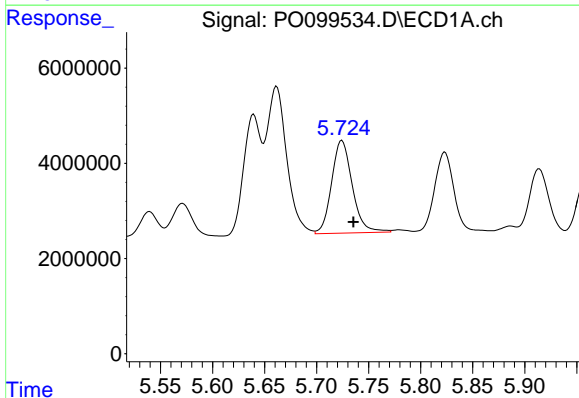
R.T.: 5.662 min
 Delta R.T.: -0.012 min
 Response: 41967051
 Conc: 655.25 ng/ml

Instrument :
 ECD_O
 ClientSampleId :



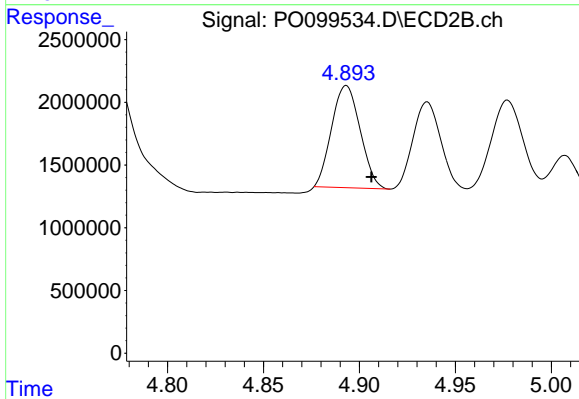
#17 AR-1242-2

R.T.: 4.718 min
 Delta R.T.: -0.012 min
 Response: 17879307
 Conc: 737.79 ng/ml



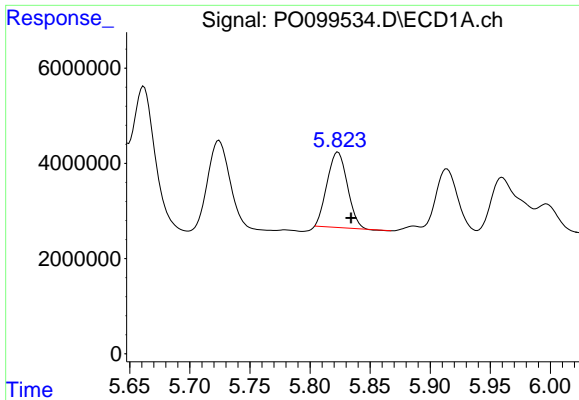
#18 AR-1242-3

R.T.: 5.724 min
 Delta R.T.: -0.011 min
 Response: 26933563
 Conc: 669.56 ng/ml



#18 AR-1242-3

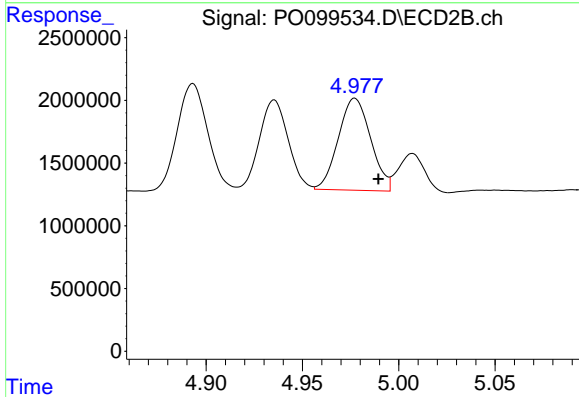
R.T.: 4.893 min
 Delta R.T.: -0.013 min
 Response: 8443019
 Conc: 658.55 ng/ml



#19 AR-1242-4

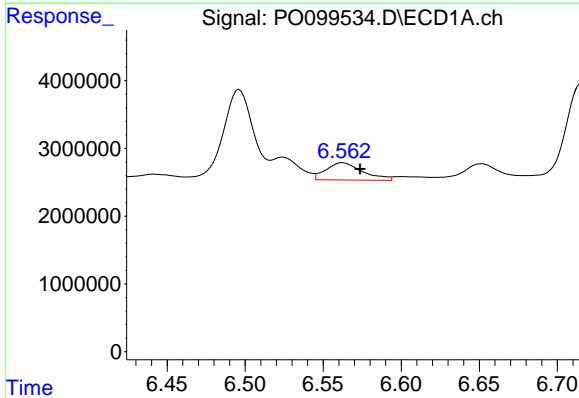
R.T.: 5.823 min
 Delta R.T.: -0.011 min
 Response: 18571353
 Conc: 593.47 ng/ml

Instrument :
 ECD_O
 ClientSampleId :



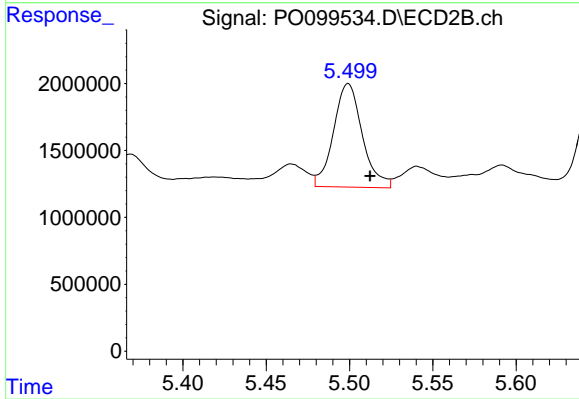
#19 AR-1242-4

R.T.: 4.977 min
 Delta R.T.: -0.012 min
 Response: 8572040
 Conc: 608.95 ng/ml



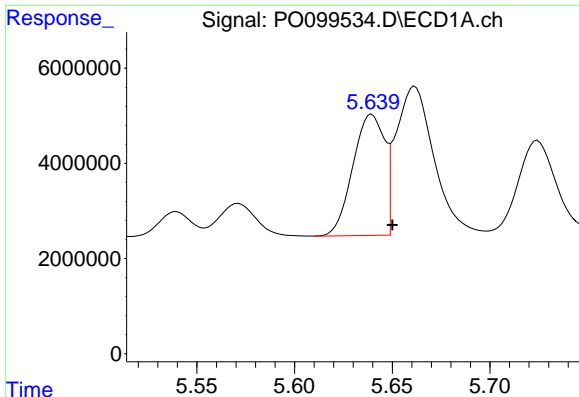
#20 AR-1242-5

R.T.: 6.562 min
 Delta R.T.: -0.011 min
 Response: 4153113
 Conc: 134.63 ng/ml



#20 AR-1242-5

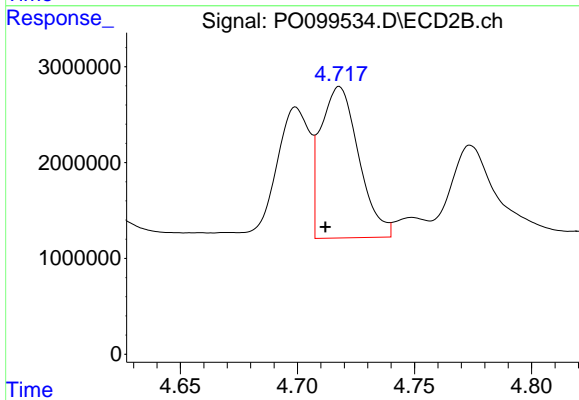
R.T.: 5.499 min
 Delta R.T.: -0.013 min
 Response: 9295216
 Conc: 556.23 ng/ml



#21 AR-1248-1

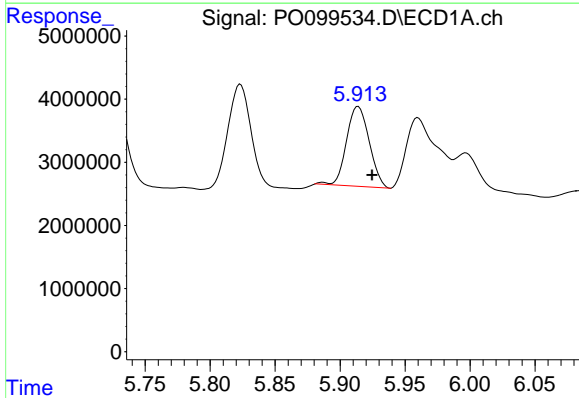
R.T.: 5.640 min
 Delta R.T.: -0.011 min
 Response: 28702674
 Conc: 844.88 ng/ml

Instrument :
 ECD_O
 ClientSampleId :



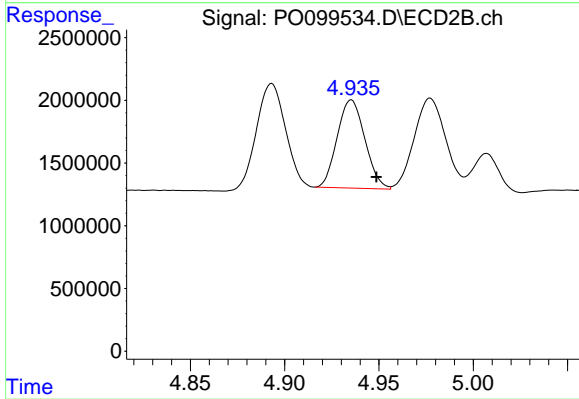
#21 AR-1248-1

R.T.: 4.718 min
 Delta R.T.: 0.006 min
 Response: 17879307
 Conc: 1290.00 ng/ml



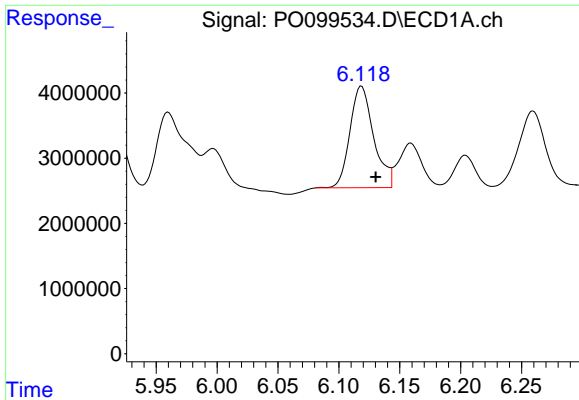
#22 AR-1248-2

R.T.: 5.914 min
 Delta R.T.: -0.011 min
 Response: 15300336
 Conc: 292.36 ng/ml



#22 AR-1248-2

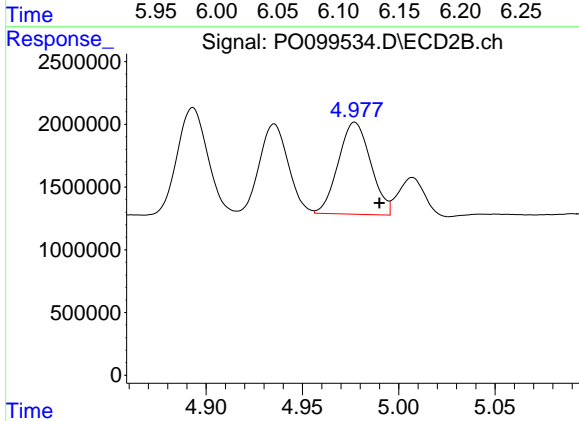
R.T.: 4.935 min
 Delta R.T.: -0.013 min
 Response: 7183875
 Conc: 361.66 ng/ml



#23 AR-1248-3

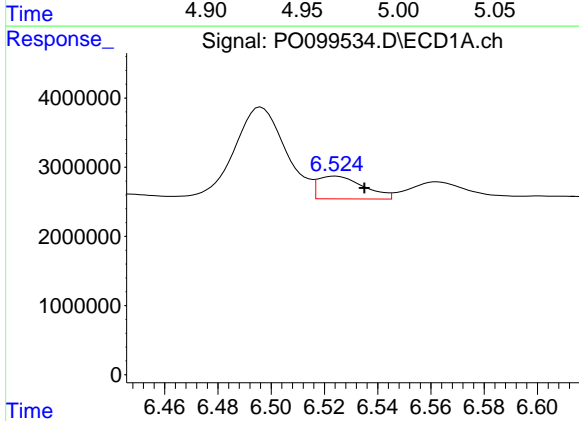
R.T.: 6.119 min
 Delta R.T.: -0.012 min
 Response: 21128081
 Conc: 370.81 ng/ml

Instrument :
 ECD_O
 ClientSampleId :



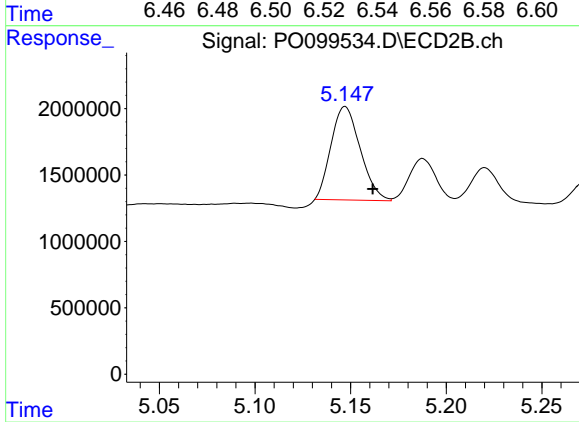
#23 AR-1248-3

R.T.: 4.977 min
 Delta R.T.: -0.013 min
 Response: 8572040
 Conc: 411.06 ng/ml



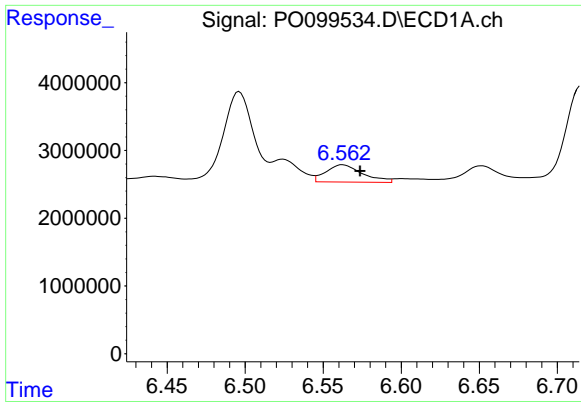
#24 AR-1248-4

R.T.: 6.524 min
 Delta R.T.: -0.011 min
 Response: 3918666
 Conc: 71.86 ng/ml



#24 AR-1248-4

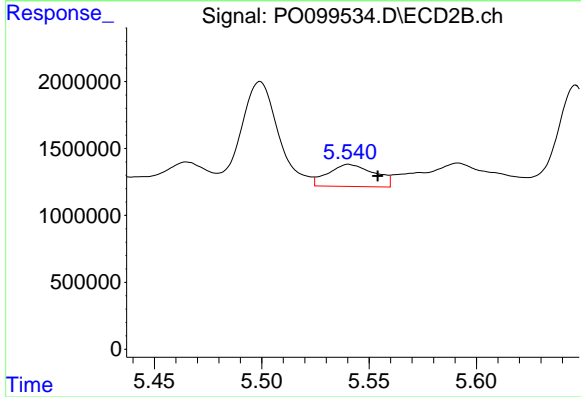
R.T.: 5.147 min
 Delta R.T.: -0.014 min
 Response: 7484943
 Conc: 304.47 ng/ml



#25 AR-1248-5

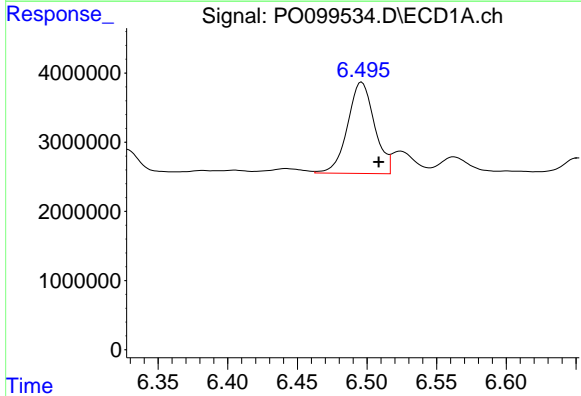
R.T.: 6.562 min
 Delta R.T.: -0.011 min
 Response: 4153113
 Conc: 73.11 ng/ml

Instrument :
 ECD_O
 ClientSampleId :



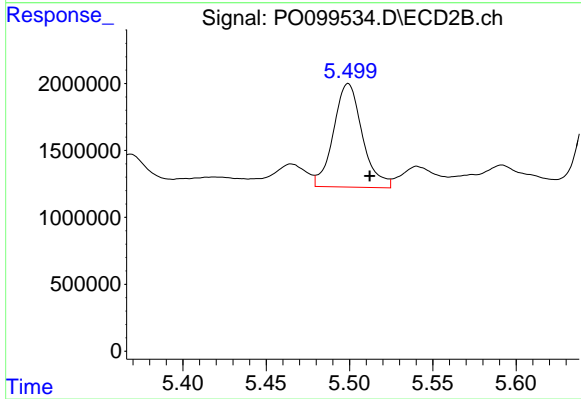
#25 AR-1248-5

R.T.: 5.540 min
 Delta R.T.: -0.013 min
 Response: 2464717
 Conc: 113.49 ng/ml



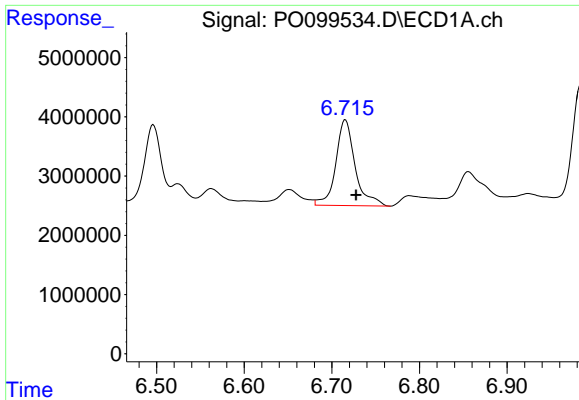
#26 AR-1254-1

R.T.: 6.496 min
 Delta R.T.: -0.012 min
 Response: 17718965
 Conc: 269.17 ng/ml



#26 AR-1254-1

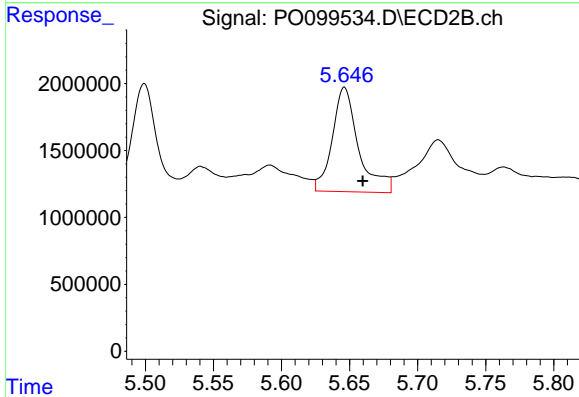
R.T.: 5.499 min
 Delta R.T.: -0.013 min
 Response: 9295216
 Conc: 262.33 ng/ml



#27 AR-1254-2

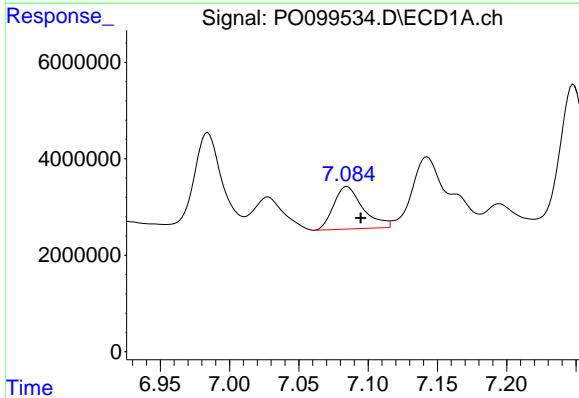
R.T.: 6.715 min
 Delta R.T.: -0.012 min
 Response: 22256410
 Conc: 231.19 ng/ml

Instrument :
 ECD_O
 ClientSampleId :



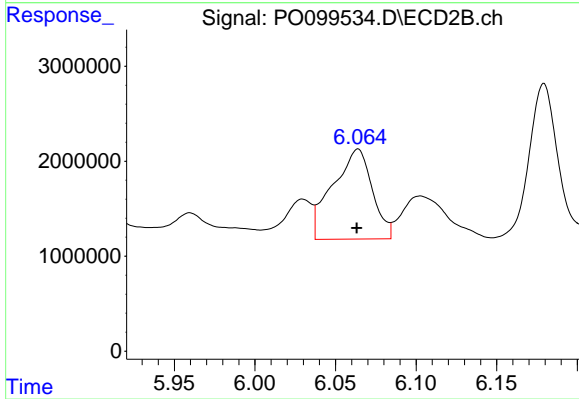
#27 AR-1254-2

R.T.: 5.646 min
 Delta R.T.: -0.013 min
 Response: 10514170
 Conc: 328.73 ng/ml



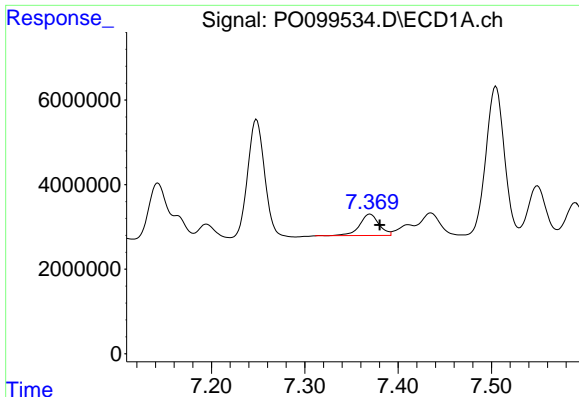
#28 AR-1254-3

R.T.: 7.085 min
 Delta R.T.: -0.010 min
 Response: 12922497
 Conc: 144.57 ng/ml



#28 AR-1254-3

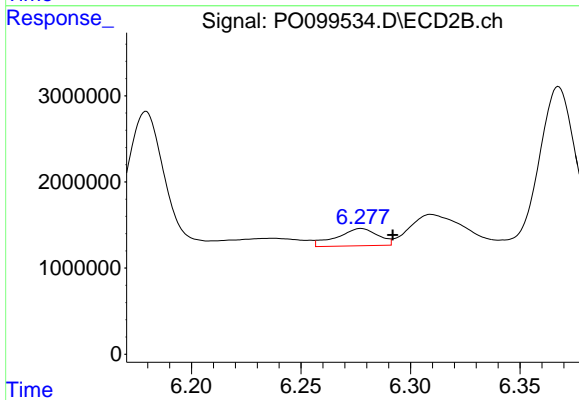
R.T.: 6.064 min
 Delta R.T.: 0.000 min
 Response: 16177866
 Conc: 330.92 ng/ml



#29 AR-1254-4

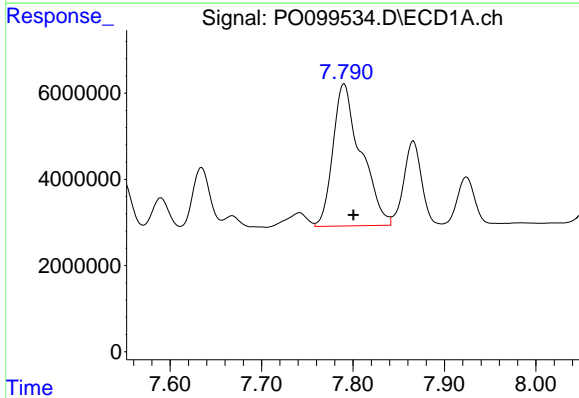
R.T.: 7.370 min
 Delta R.T.: -0.010 min
 Response: 7258308
 Conc: 132.49 ng/ml

Instrument :
 ECD_O
 ClientSampleId :



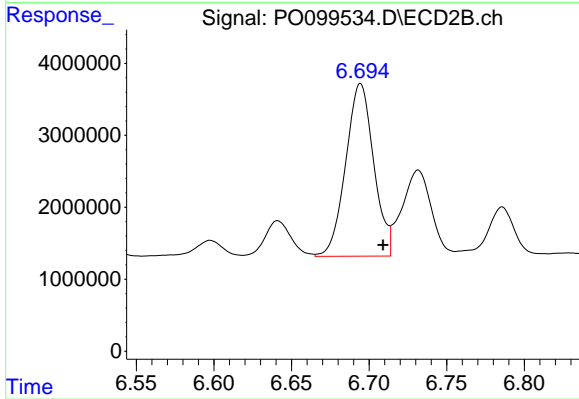
#29 AR-1254-4

R.T.: 6.278 min
 Delta R.T.: -0.014 min
 Response: 2623193
 Conc: 100.10 ng/ml



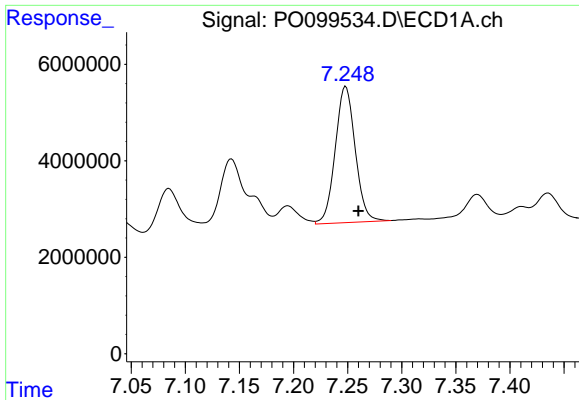
#30 AR-1254-5

R.T.: 7.790 min
 Delta R.T.: -0.010 min
 Response: 70130366
 Conc: 1041.52 ng/ml



#30 AR-1254-5

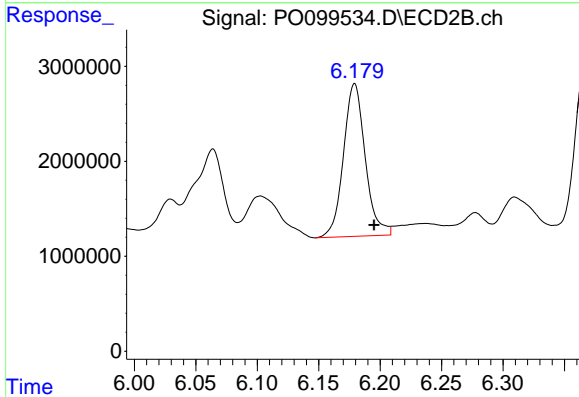
R.T.: 6.694 min
 Delta R.T.: -0.015 min
 Response: 30131615
 Conc: 714.79 ng/ml



#31 AR-1260-1

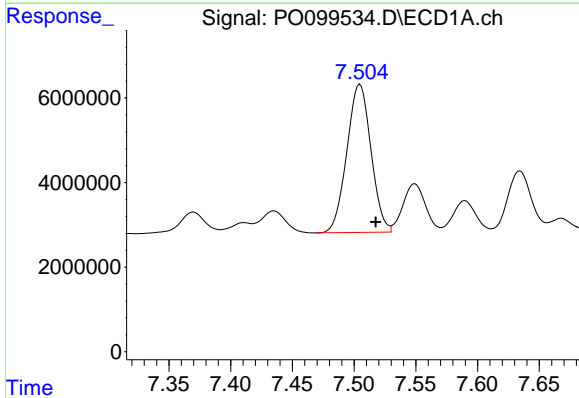
R.T.: 7.248 min
 Delta R.T.: -0.012 min
 Response: 36275834
 Conc: 506.21 ng/ml

Instrument :
 ECD_O
 ClientSampleId :



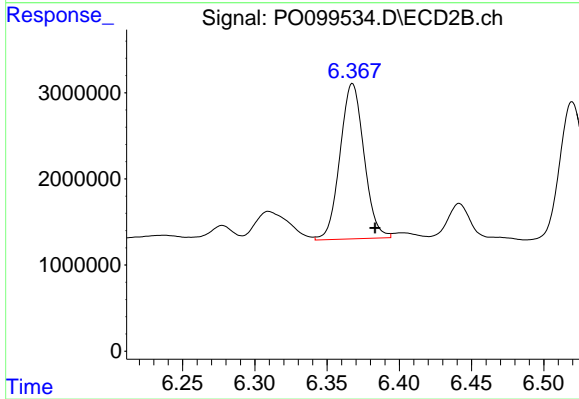
#31 AR-1260-1

R.T.: 6.179 min
 Delta R.T.: -0.016 min
 Response: 19825130
 Conc: 562.01 ng/ml



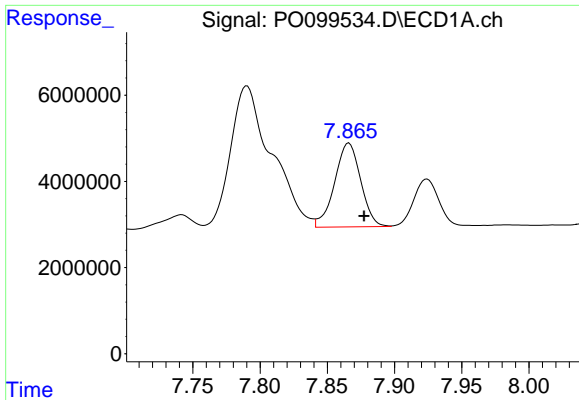
#32 AR-1260-2

R.T.: 7.505 min
 Delta R.T.: -0.013 min
 Response: 47646693
 Conc: 603.91 ng/ml



#32 AR-1260-2

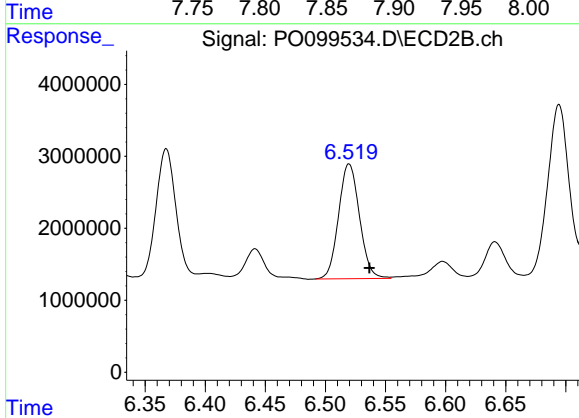
R.T.: 6.368 min
 Delta R.T.: -0.016 min
 Response: 20830340
 Conc: 519.64 ng/ml



#33 AR-1260-3

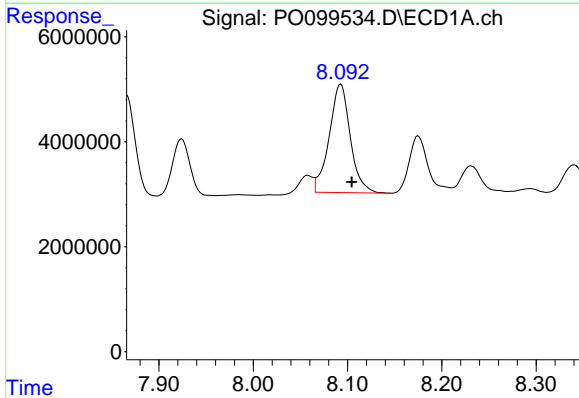
R.T.: 7.866 min
 Delta R.T.: -0.011 min
 Response: 26250478
 Conc: 480.66 ng/ml

Instrument :
 ECD_O
 ClientSampleId :



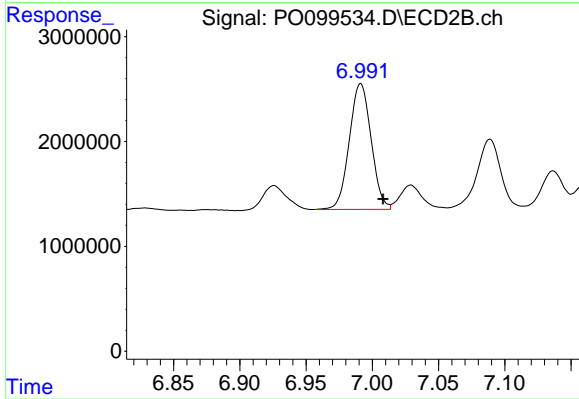
#33 AR-1260-3

R.T.: 6.520 min
 Delta R.T.: -0.017 min
 Response: 19319330
 Conc: 510.92 ng/ml



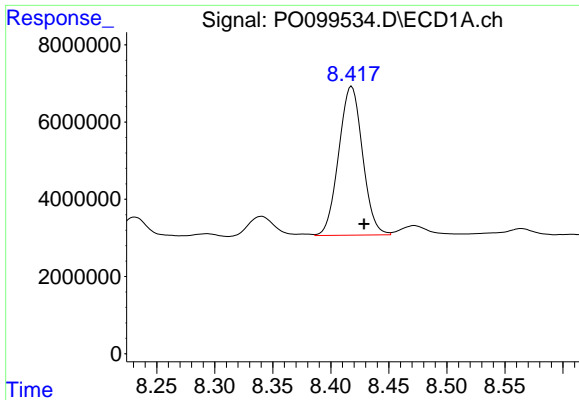
#34 AR-1260-4

R.T.: 8.093 min
 Delta R.T.: -0.012 min
 Response: 32162193
 Conc: 513.31 ng/ml



#34 AR-1260-4

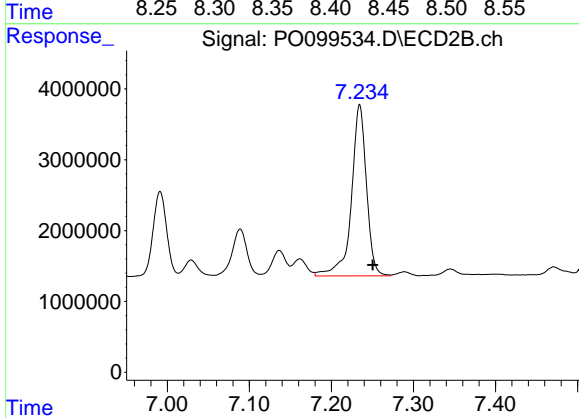
R.T.: 6.991 min
 Delta R.T.: -0.017 min
 Response: 13741703
 Conc: 475.55 ng/ml



#35 AR-1260-5

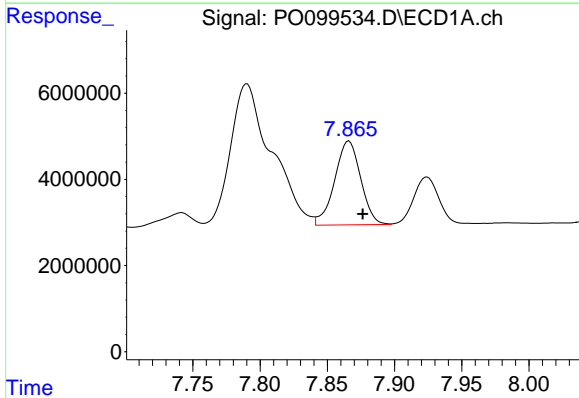
R.T.: 8.418 min
Delta R.T.: -0.011 min
Response: 5500109
Conc: 513.94 ng/ml

Instrument :
ECD_O
ClientSampleId :



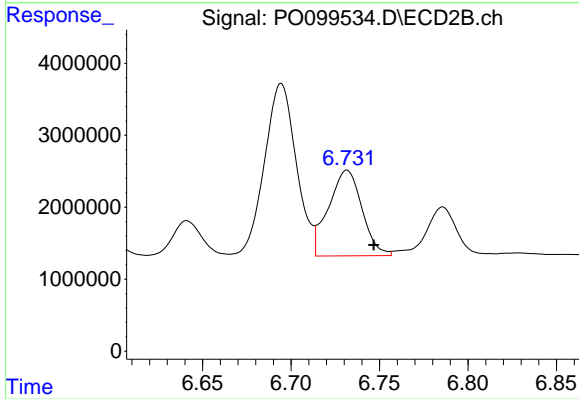
#35 AR-1260-5

R.T.: 7.234 min
Delta R.T.: -0.016 min
Response: 30871208
Conc: 512.98 ng/ml



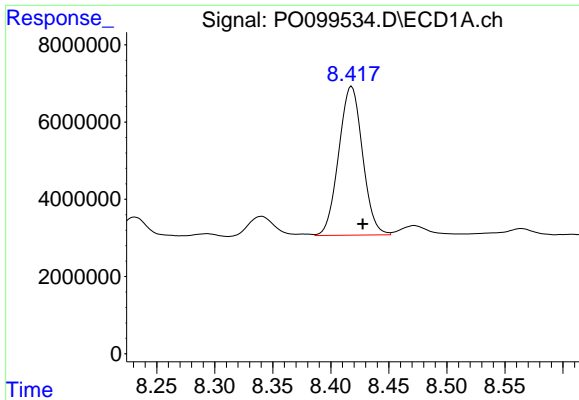
#36 AR-1262-1

R.T.: 7.866 min
Delta R.T.: -0.010 min
Response: 26250478
Conc: 290.02 ng/ml



#36 AR-1262-1

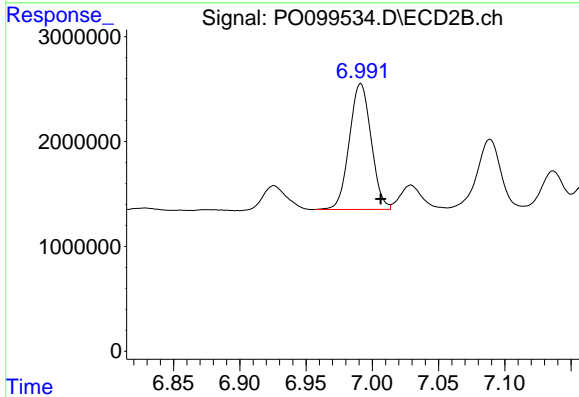
R.T.: 6.732 min
Delta R.T.: -0.015 min
Response: 15693441
Conc: 334.47 ng/ml



#37 AR-1262-2

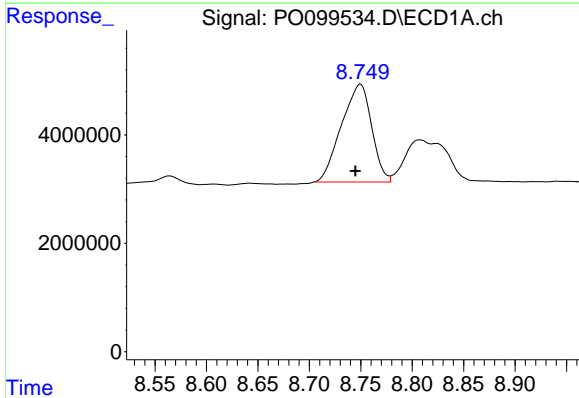
R.T.: 8.418 min
 Delta R.T.: -0.010 min
 Response: 55000109
 Conc: 412.58 ng/ml

Instrument :
 ECD_O
 ClientSampleId :



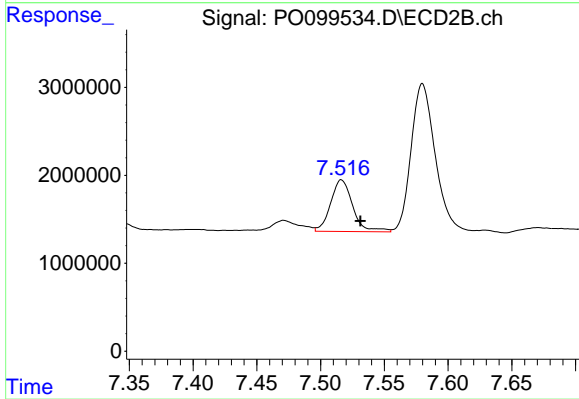
#37 AR-1262-2

R.T.: 6.991 min
 Delta R.T.: -0.015 min
 Response: 13741703
 Conc: 330.99 ng/ml



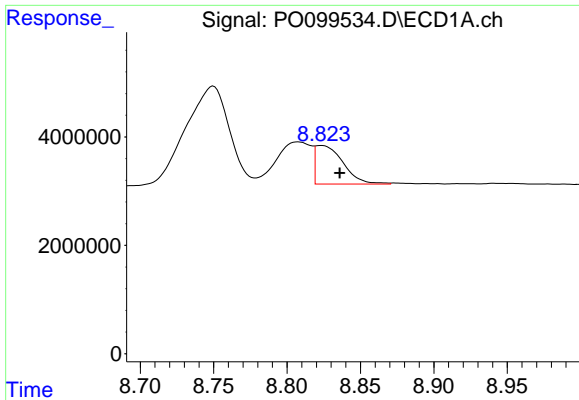
#38 AR-1262-3

R.T.: 8.750 min
 Delta R.T.: 0.005 min
 Response: 36878572
 Conc: 375.03 ng/ml



#38 AR-1262-3

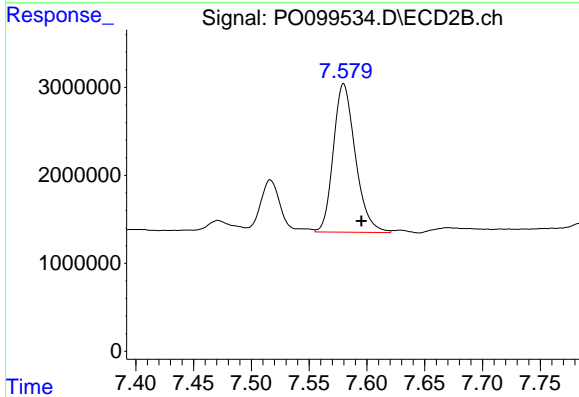
R.T.: 7.516 min
 Delta R.T.: -0.015 min
 Response: 7112596
 Conc: 222.64 ng/ml



#39 AR-1262-4

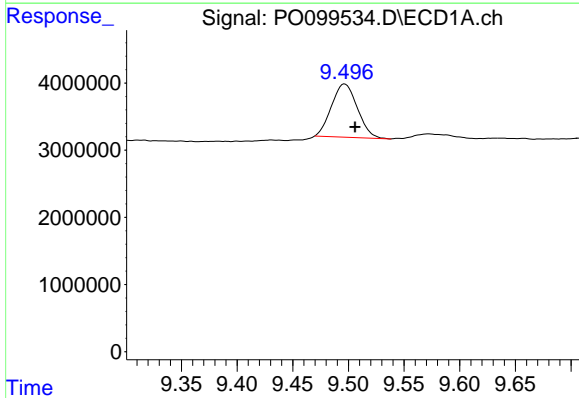
R.T.: 8.824 min
 Delta R.T.: -0.012 min
 Response: 9318004
 Conc: 116.32 ng/ml

Instrument :
 ECD_O
 ClientSampleId :



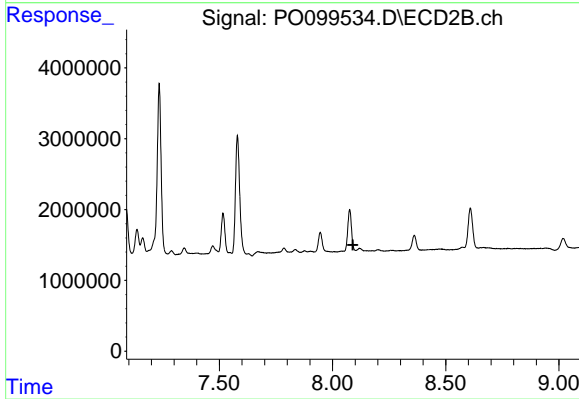
#39 AR-1262-4

R.T.: 7.580 min
 Delta R.T.: -0.015 min
 Response: 22320852
 Conc: 405.99 ng/ml



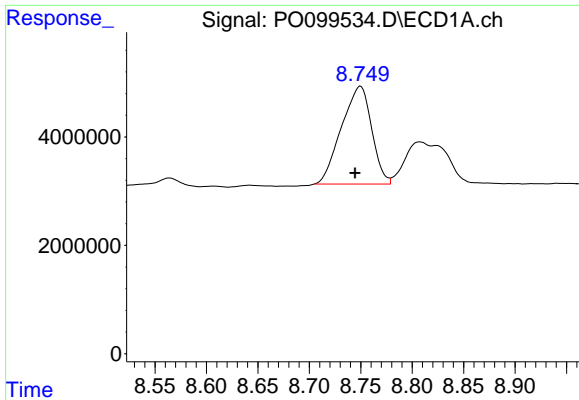
#40 AR-1262-5

R.T.: 9.497 min
 Delta R.T.: -0.009 min
 Response: 12791097
 Conc: 291.10 ng/ml



#40 AR-1262-5

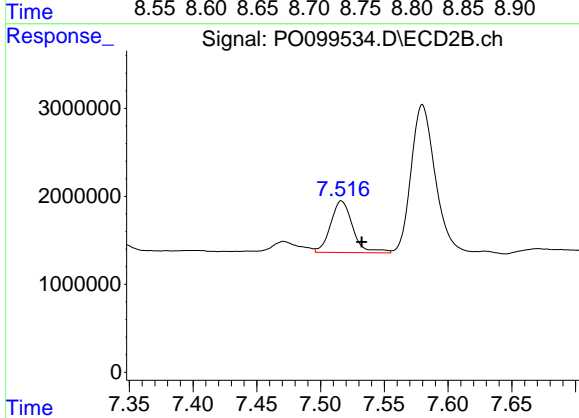
R.T.: 8.119 min
 Delta R.T.: 0.028 min
 Response: -4690035
 Conc: N.D.



#41 AR-1268-1

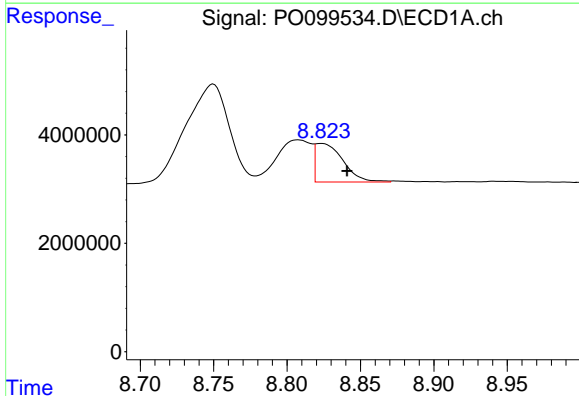
R.T.: 8.750 min
 Delta R.T.: 0.005 min
 Response: 36878572
 Conc: 214.11 ng/ml

Instrument :
 ECD_O
 ClientSampleId :



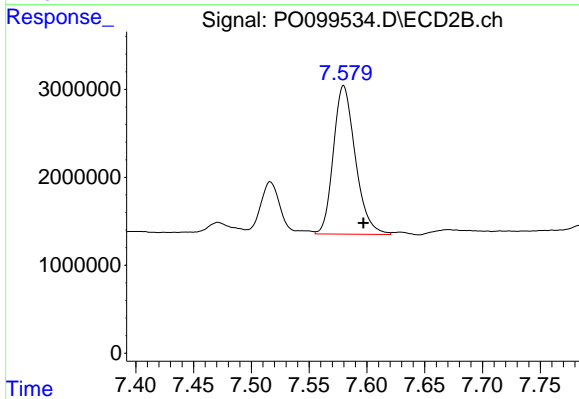
#41 AR-1268-1

R.T.: 7.516 min
 Delta R.T.: -0.016 min
 Response: 7112596
 Conc: 79.74 ng/ml



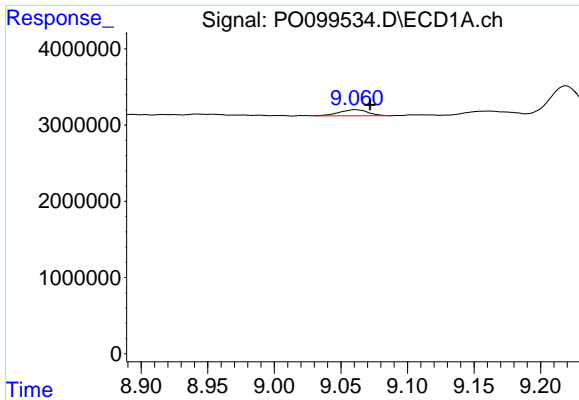
#42 AR-1268-2

R.T.: 8.824 min
 Delta R.T.: -0.017 min
 Response: 9318004
 Conc: 59.43 ng/ml



#42 AR-1268-2

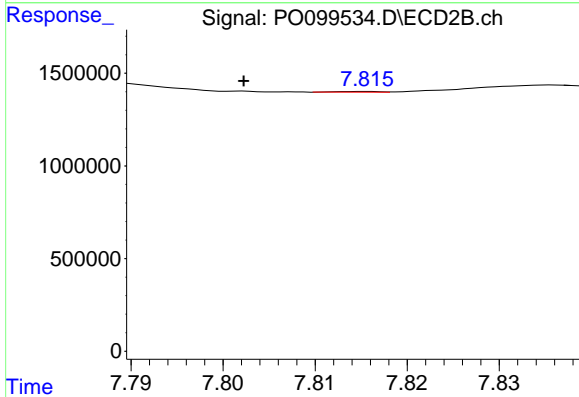
R.T.: 7.580 min
 Delta R.T.: -0.017 min
 Response: 22320852
 Conc: 282.70 ng/ml



#43 AR-1268-3

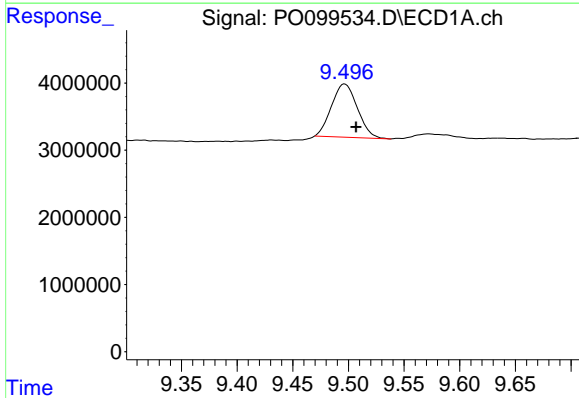
R.T.: 9.061 min
 Delta R.T.: -0.011 min
 Response: 1193908
 Conc: 8.52 ng/ml

Instrument :
 ECD_O
 ClientSampleId :



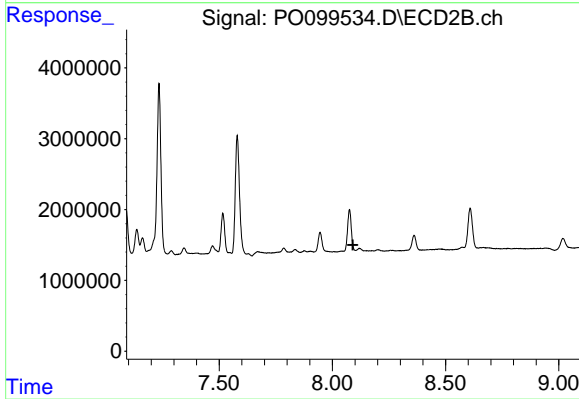
#43 AR-1268-3

R.T.: 7.815 min
 Delta R.T.: 0.013 min
 Response: 12373
 Conc: 0.18 ng/ml



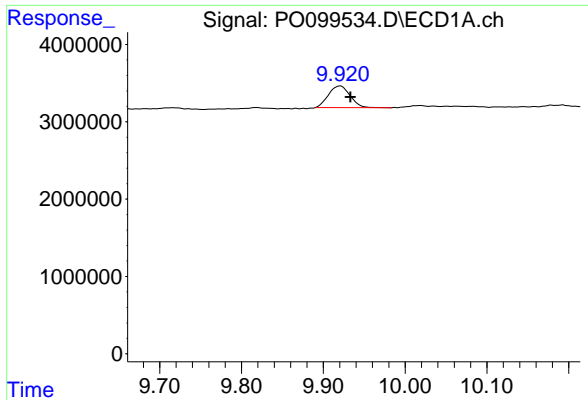
#44 AR-1268-4

R.T.: 9.497 min
 Delta R.T.: -0.010 min
 Response: 12791097
 Conc: 255.08 ng/ml



#44 AR-1268-4

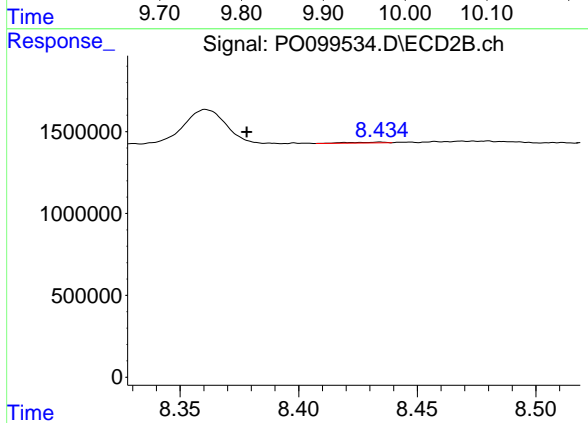
R.T.: 8.119 min
 Delta R.T.: 0.028 min
 Response: -4690035
 Conc: N.D.



#45 AR-1268-5

R.T.: 9.921 min
 Delta R.T.: -0.012 min
 Response: 5169777
 Conc: 12.63 ng/ml

Instrument :
 ECD_O
 ClientSampleId :



#45 AR-1268-5

R.T.: 8.434 min
 Delta R.T.: 0.056 min
 Response: 55012
 Conc: 0.29 ng/ml