

Data Path : Z:\pestpcbsrv\HPCHEM1\ECD\_0\Data\PO110824\  
 Data File : PO107806.D  
 Signal(s) : Signal #1: ECD1A.ch Signal #2: ECD2B.ch  
 Acq On : 08 Nov 2024 11:10  
 Operator : YP/AJ  
 Sample : AR1254CCC500  
 Misc :  
 ALS Vial : 6 Sample Multiplier: 1

Instrument :  
 ECD\_0  
 ClientSampleId :  
 AR1254CCC500

Integration File signal 1: autoint1.e  
 Integration File signal 2: autoint2.e  
 Quant Time: Nov 09 01:30:59 2024  
 Quant Method : Z:\pestpcbsrv\HPCHEM1\ECD\_0\methods\PO101524.M  
 Quant Title : GC EXTRACTABLES  
 QLast Update : Mon Oct 28 11:34:55 2024  
 Response via : Initial Calibration  
 Integrator: ChemStation

Volume Inj. : 2 µl  
 Signal #1 Phase : ZB-MR1 Signal #2 Phase: ZB-MR2  
 Signal #1 Info : 30Mx0.32mmx 0.50µ Signal #2 Info : 30M x 0.32mm x 0.25µm

Compound	RT#1	RT#2	Resp#1	Resp#2	ng/ml	ng/ml
System Monitoring Compounds						
1) SA Tetrachlo...	4.371	3.643	471.6E6	176.4E6	51.740	54.806
2) SA Decachlor...	10.080	8.639	116.5E6	144.8E6	47.484	52.825
Target Compounds						
3) L1 AR-1016-1	5.523	4.723	4649589	1540668	17.233	14.919
4) L1 AR-1016-2	5.547	4.742	5990644	1285130	15.094	9.116 #
5) L1 AR-1016-3	5.608	4.919	2929088	952060	11.662	12.090
6) L1 AR-1016-4	5.705	4.959	2393084	34183178	12.424	517.078 #
7) L1 AR-1016-5	6.001	5.173	49939894	20657127	273.413	251.506
8) L2 AR-1221-1	4.565	3.860	236276	82426	2.119	2.274
9) L2 AR-1221-2	4.671	3.941	7622160	2610487	93.047	89.696
10) L2 AR-1221-3	4.731	4.014	1480661	504733	6.188	5.720
11) L3 AR-1232-1	4.731	4.014	1480661	504733	7.560	7.497
12) L3 AR-1232-2	5.257	4.742	2718440	1285130	26.386	20.333
13) L3 AR-1232-3	5.547	4.919	5990644	952060	33.467	27.616
14) L3 AR-1232-4	5.705	5.000	2393084	10233986	26.541	325.240 #
15) L3 AR-1232-5	5.798	5.173	87359108	20657127	1325.566	624.397 #
16) L4 AR-1242-1	5.523	4.723	4649589	1540668	20.790	18.397
17) L4 AR-1242-2	5.547	4.742	5990644	1285130	18.517	11.113 #
18) L4 AR-1242-3	5.608	4.919	2929088	952060	14.016	15.009
19) L4 AR-1242-4	5.705	5.000	2393084	10233986	14.956	159.783 #
20) L4 AR-1242-5	6.446	5.524	42370419	82305357	270.769	1061.682 #
21) L5 AR-1248-1	5.523	4.723	4649589	1540668	26.741	24.285
22) L5 AR-1248-2	5.798	4.959	87359108	34183178	345.258	373.648
23) L5 AR-1248-3	6.001	5.000	49939894	10233986	195.317	107.282 #
24) L5 AR-1248-4	6.403	5.173	63485801	20657127	246.239	184.211 #
25) L5 AR-1248-5	6.446	5.564	42370419	7576383	162.936	68.708 #
26) L6 AR-1254-1	6.380	5.524	132.8E6	82305357	494.131	499.462
27) L6 AR-1254-2	6.599	5.671	188.4E6	63499051	499.263	438.037
28) L6 AR-1254-3	6.965	6.074	178.5E6	120.9E6	498.862	526.363
29) L6 AR-1254-4	7.250	6.302	119.4E6	72695021	520.502	561.684
30) L6 AR-1254-5	7.672	6.719	111.1E6	104.3E6	535.097	546.043
31) L7 AR-1260-1	7.133	6.204	72408201	56634027	280.013	365.017 #
32) L7 AR-1260-2	7.389	6.391	70380959	45757486	267.384	259.815
33) L7 AR-1260-3	7.731	6.544	16163900	46117452	89.927	274.921 #
34) L7 AR-1260-4	7.959	7.016	41328179	5361517	235.483	37.058 #
35) L7 AR-1260-5	8.291	7.257	12627483	11816378	44.401	35.868
36) L8 AR-1262-1	7.731	6.789	16163900	8509273	65.828	39.973 #
37) L8 AR-1262-2	8.291	7.257	12627483	11816378	40.810	32.522
38) L8 AR-1262-3	8.613	7.538	9958012	959084	47.601	6.981 #
39) L8 AR-1262-4	8.691	7.602	755136	12035708	4.631	45.491 #
40) L8 AR-1262-5	9.301	8.097	13738	1372587	0.134	12.165 #
41) L9 AR-1268-1	8.569	7.538	11576	959084	0.032	2.371 #

Data Path : Z:\pestpcbsrv\HPCHEM1\ECD\_0\Data\PO110824\  
 Data File : PO107806.D  
 Signal(s) : Signal #1: ECD1A.ch Signal #2: ECD2B.ch  
 Acq On : 08 Nov 2024 11:10  
 Operator : YP/AJ  
 Sample : AR1254CCC500  
 Misc :  
 ALS Vial : 6 Sample Multiplier: 1

Instrument :  
 ECD\_0  
 ClientSampleId :  
 AR1254CCC500

Integration File signal 1: autoint1.e  
 Integration File signal 2: autoint2.e  
 Quant Time: Nov 09 01:30:59 2024  
 Quant Method : Z:\pestpcbsrv\HPCHEM1\ECD\_0\methods\PO101524.M  
 Quant Title : GC EXTRACTABLES  
 QLast Update : Mon Oct 28 11:34:55 2024  
 Response via : Initial Calibration  
 Integrator: ChemStation

Volume Inj. : 2 µl  
 Signal #1 Phase : ZB-MR1 Signal #2 Phase: ZB-MR2  
 Signal #1 Info : 30Mx0.32mmx 0.50µ Signal #2 Info : 30M x 0.32mm x 0.25µm

	Compound	RT#1	RT#2	Resp#1	Resp#2	ng/ml	ng/ml
42)	L9 AR-1268-2	8.691	7.602	755136	12035708	2.342	32.244 #
43)	L9 AR-1268-3	8.921	7.810	210376	837988	0.753	2.511 #
44)	L9 AR-1268-4	9.301	8.097	13738	1372587	0.124	10.948 #
45)	L9 AR-1268-5	9.742	8.386	3304518	4078893	3.970	4.129

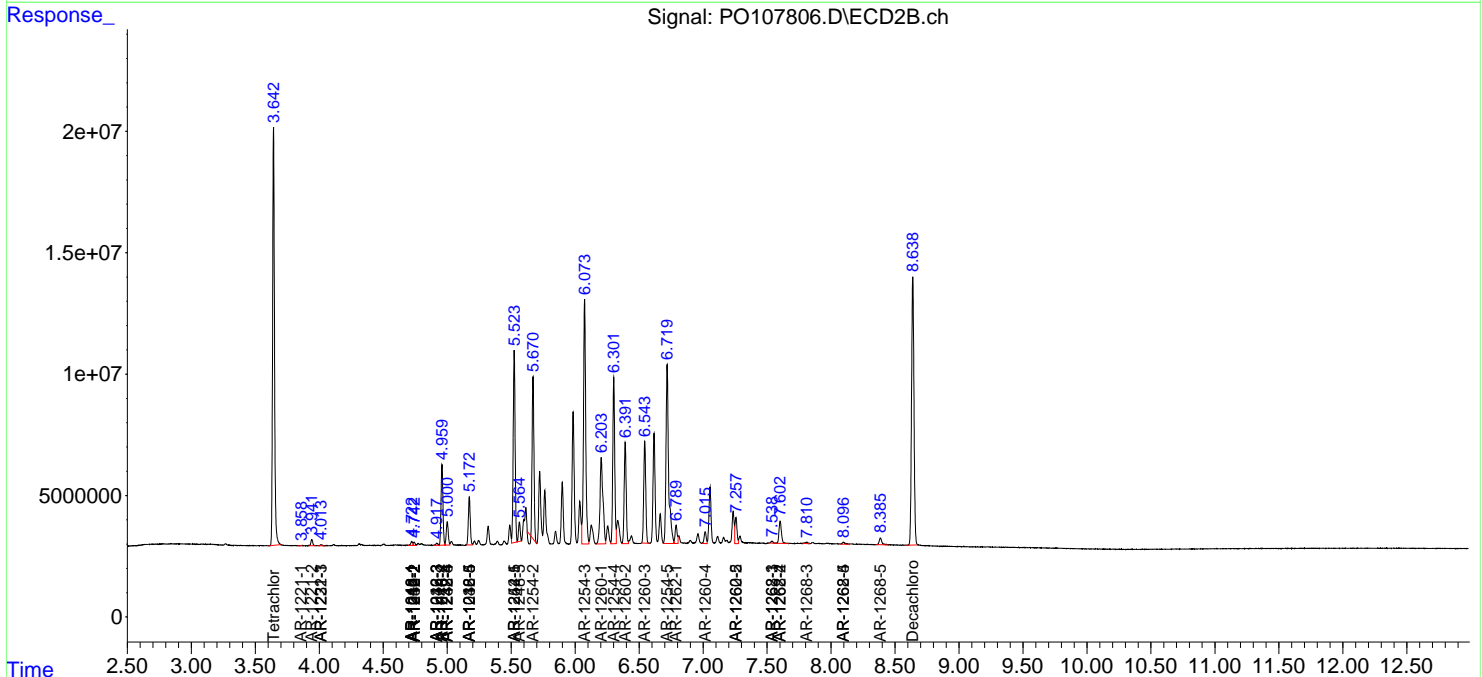
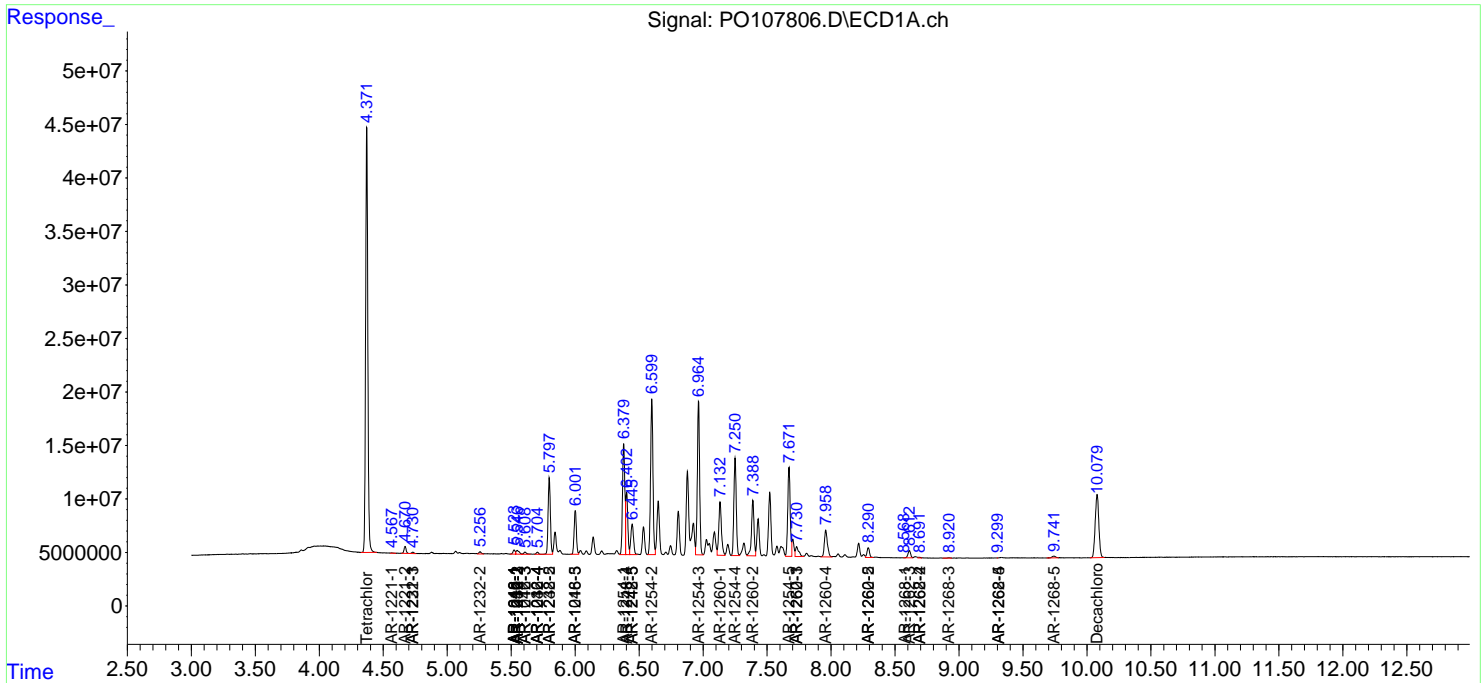
(f)=RT Delta > 1/2 Window (#)=Amounts differ by > 25% (m)=manual int.

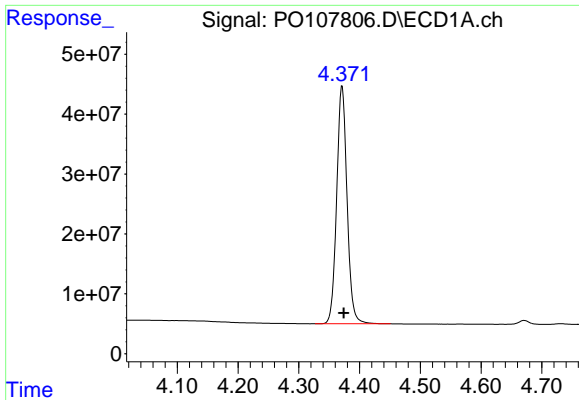
Data Path : Z:\pestpcbsrv\HPCHEM1\ECD\_O\Data\PO110824\  
 Data File : PO107806.D  
 Signal(s) : Signal #1: ECD1A.ch Signal #2: ECD2B.ch  
 Acq On : 08 Nov 2024 11:10  
 Operator : YP/AJ  
 Sample : AR1254CCC500  
 Misc :  
 ALS Vial : 6 Sample Multiplier: 1

Instrument :  
 ECD\_O  
 ClientSampleId :  
 AR1254CCC500

Integration File signal 1: autoint1.e  
 Integration File signal 2: autoint2.e  
 Quant Time: Nov 09 01:30:59 2024  
 Quant Method : Z:\pestpcbsrv\HPCHEM1\ECD\_O\methods\PO101524.M  
 Quant Title : GC EXTRACTABLES  
 QLast Update : Mon Oct 28 11:34:55 2024  
 Response via : Initial Calibration  
 Integrator: ChemStation

Volume Inj. : 2 µl  
 Signal #1 Phase : ZB-MR1 Signal #2 Phase: ZB-MR2  
 Signal #1 Info : 30Mx0.32mmx 0.50µ Signal #2 Info : 30M x 0.32mm x 0.25µm

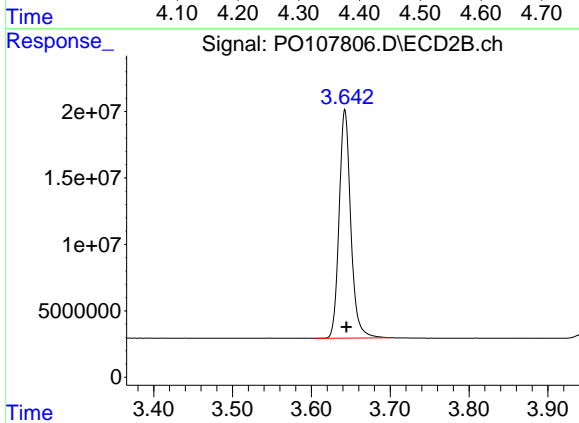




#1 Tetrachloro-m-xylene

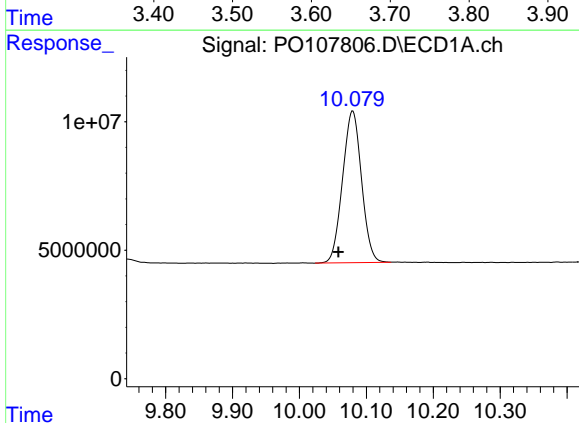
R.T.: 4.371 min  
Delta R.T.: -0.003 min  
Response: 471552260  
Conc: 51.74 ng/ml

Instrument :  
ECD\_O  
ClientSampleId :  
AR1254CCC500



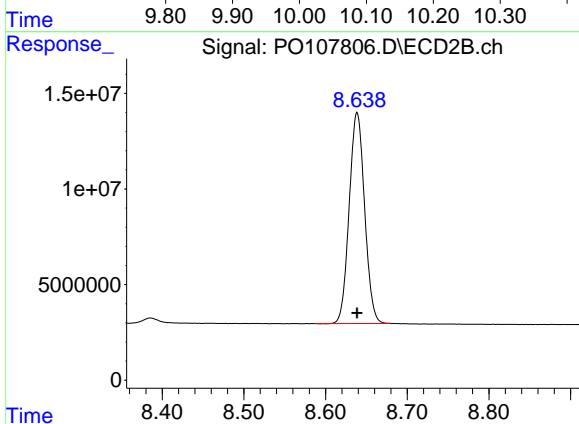
#1 Tetrachloro-m-xylene

R.T.: 3.643 min  
Delta R.T.: -0.002 min  
Response: 176392460  
Conc: 54.81 ng/ml



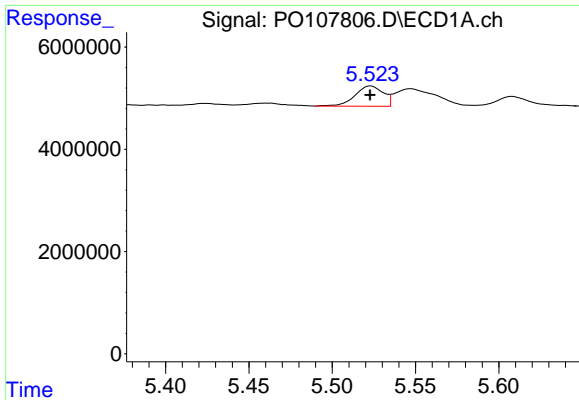
#2 Decachlorobiphenyl

R.T.: 10.080 min  
Delta R.T.: 0.021 min  
Response: 116495992  
Conc: 47.48 ng/ml



#2 Decachlorobiphenyl

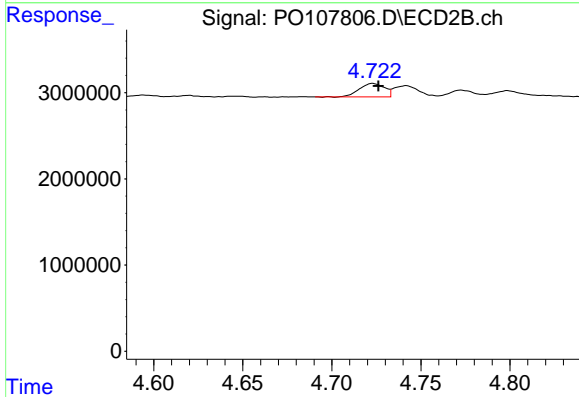
R.T.: 8.639 min  
Delta R.T.: 0.000 min  
Response: 144825911  
Conc: 52.83 ng/ml



#3 AR-1016-1

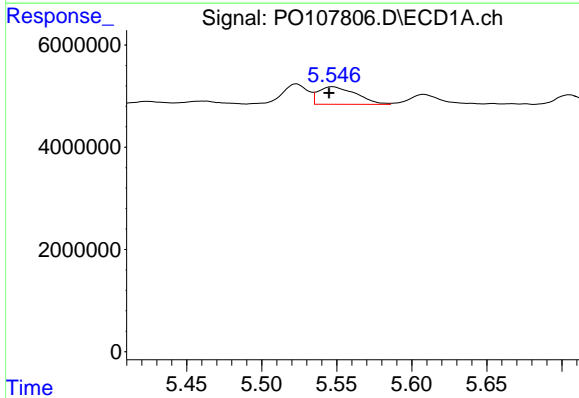
R.T.: 5.523 min  
 Delta R.T.: 0.000 min  
 Response: 4649589  
 Conc: 17.23 ng/ml

Instrument :  
 ECD\_O  
 ClientSampleId :  
 AR1254CCC500



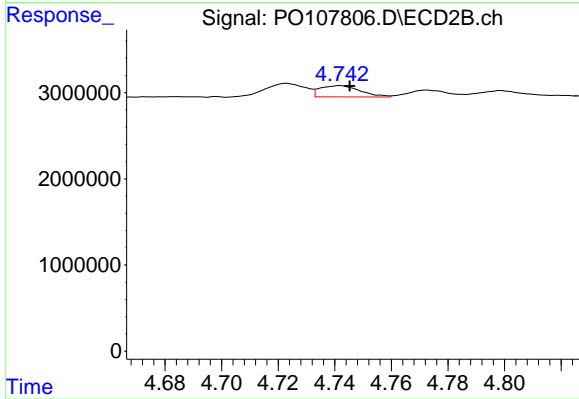
#3 AR-1016-1

R.T.: 4.723 min  
 Delta R.T.: -0.003 min  
 Response: 1540668  
 Conc: 14.92 ng/ml



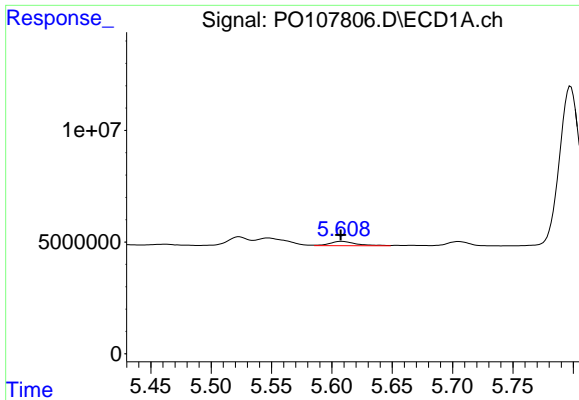
#4 AR-1016-2

R.T.: 5.547 min  
 Delta R.T.: 0.002 min  
 Response: 5990644  
 Conc: 15.09 ng/ml



#4 AR-1016-2

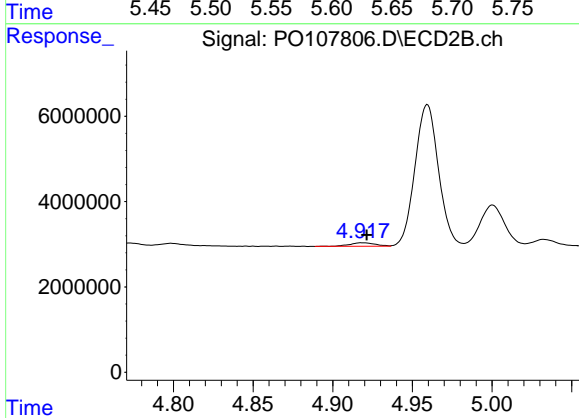
R.T.: 4.742 min  
 Delta R.T.: -0.004 min  
 Response: 1285130  
 Conc: 9.12 ng/ml



#5 AR-1016-3

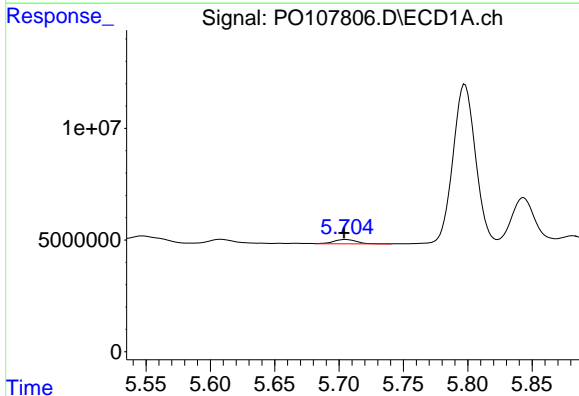
R.T.: 5.608 min  
 Delta R.T.: 0.000 min  
 Response: 2929088  
 Conc: 11.66 ng/ml

Instrument :  
 ECD\_O  
 ClientSampleId :  
 AR1254CCC500



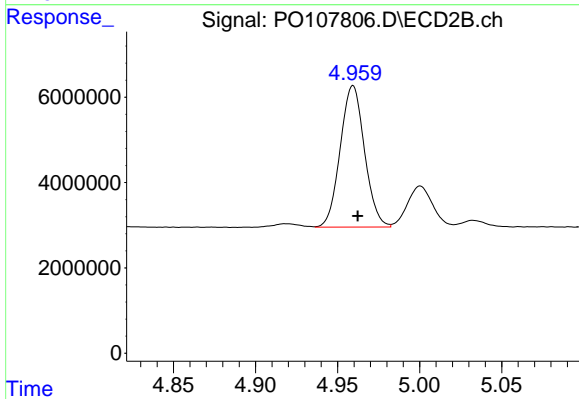
#5 AR-1016-3

R.T.: 4.919 min  
 Delta R.T.: -0.003 min  
 Response: 952060  
 Conc: 12.09 ng/ml



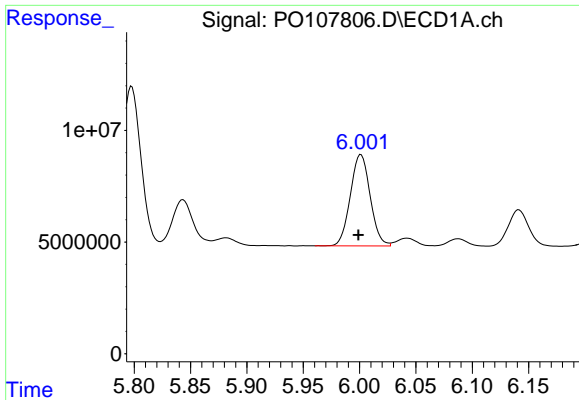
#6 AR-1016-4

R.T.: 5.705 min  
 Delta R.T.: 0.001 min  
 Response: 2393084  
 Conc: 12.42 ng/ml



#6 AR-1016-4

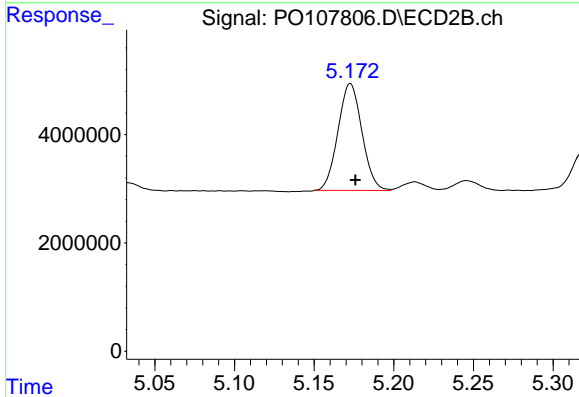
R.T.: 4.959 min  
 Delta R.T.: -0.003 min  
 Response: 34183178  
 Conc: 517.08 ng/ml



#7 AR-1016-5

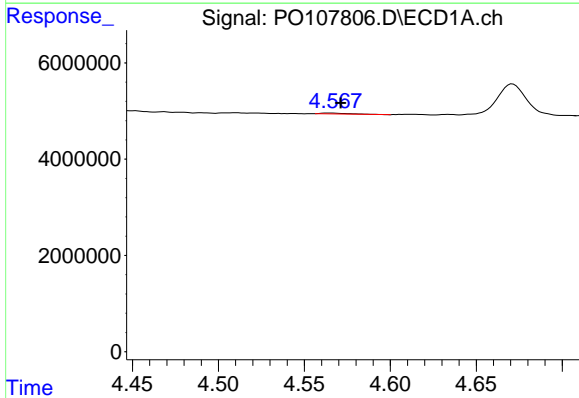
R.T.: 6.001 min  
 Delta R.T.: 0.002 min  
 Response: 49939894  
 Conc: 273.41 ng/ml

Instrument :  
 ECD\_O  
 ClientSampleId :  
 AR1254CCC500



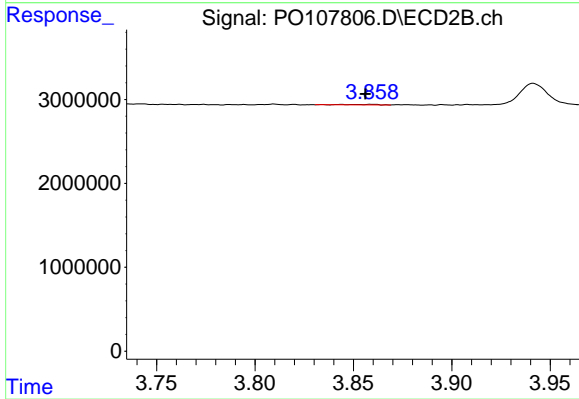
#7 AR-1016-5

R.T.: 5.173 min  
 Delta R.T.: -0.003 min  
 Response: 20657127  
 Conc: 251.51 ng/ml



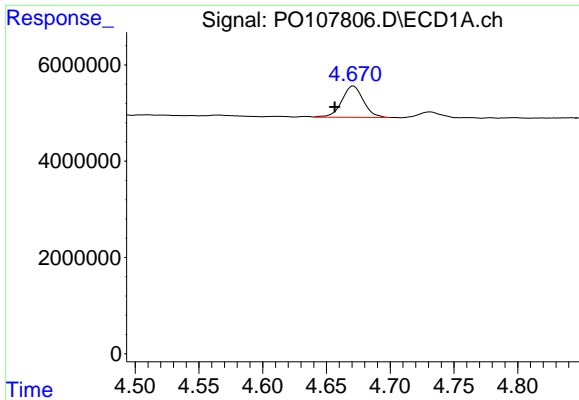
#8 AR-1221-1

R.T.: 4.565 min  
 Delta R.T.: -0.006 min  
 Response: 236276  
 Conc: 2.12 ng/ml



#8 AR-1221-1

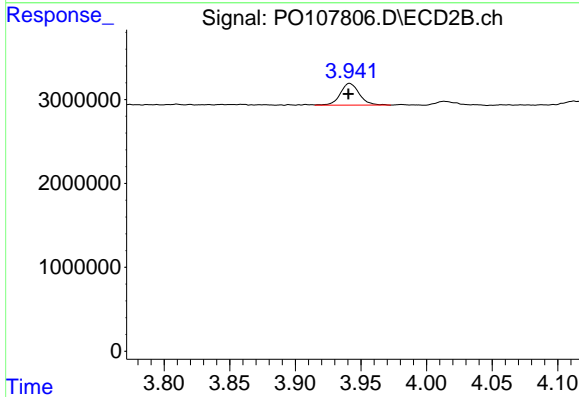
R.T.: 3.860 min  
 Delta R.T.: 0.004 min  
 Response: 82426  
 Conc: 2.27 ng/ml



#9 AR-1221-2

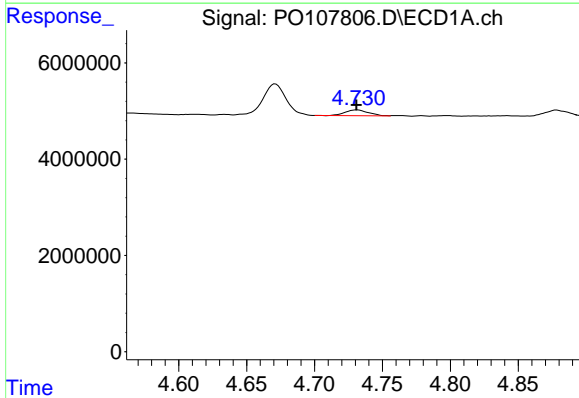
R.T.: 4.671 min  
 Delta R.T.: 0.015 min  
 Response: 7622160  
 Conc: 93.05 ng/ml

Instrument :  
 ECD\_O  
 ClientSampleId :  
 AR1254CCC500



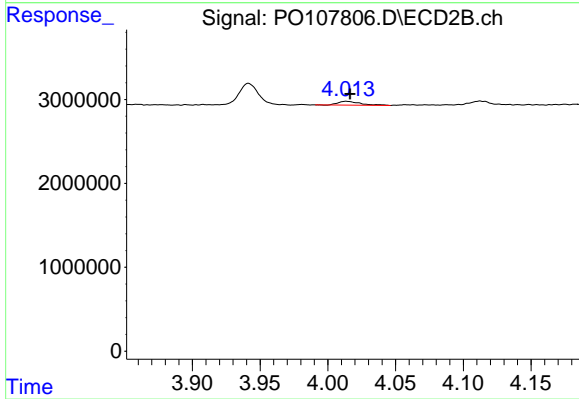
#9 AR-1221-2

R.T.: 3.941 min  
 Delta R.T.: 0.000 min  
 Response: 2610487  
 Conc: 89.70 ng/ml



#10 AR-1221-3

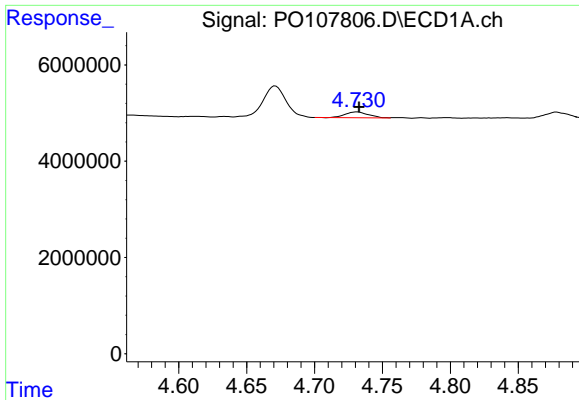
R.T.: 4.731 min  
 Delta R.T.: 0.000 min  
 Response: 1480661  
 Conc: 6.19 ng/ml



#10 AR-1221-3

R.T.: 4.014 min  
 Delta R.T.: -0.003 min  
 Response: 504733  
 Conc: 5.72 ng/ml

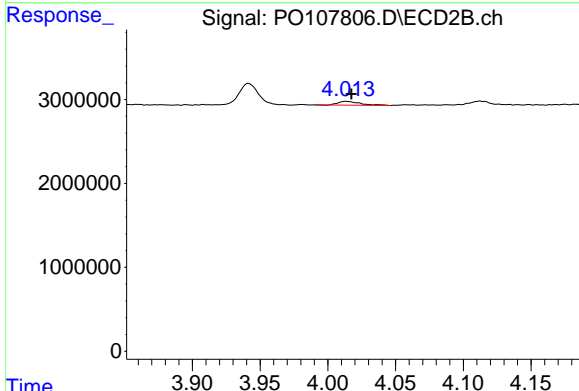




#11 AR-1232-1

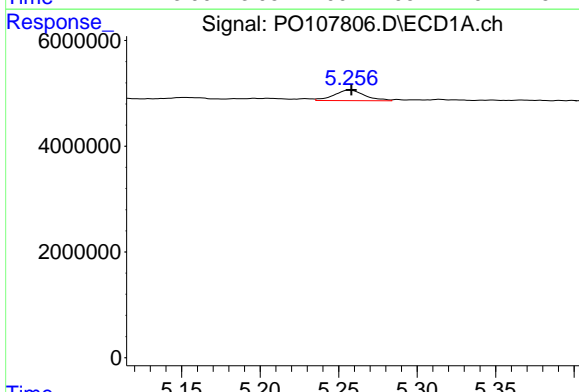
R.T.: 4.731 min  
 Delta R.T.: -0.001 min  
 Response: 1480661  
 Conc: 7.56 ng/ml

Instrument :  
 ECD\_O  
 ClientSampleId :  
 AR1254CCC500



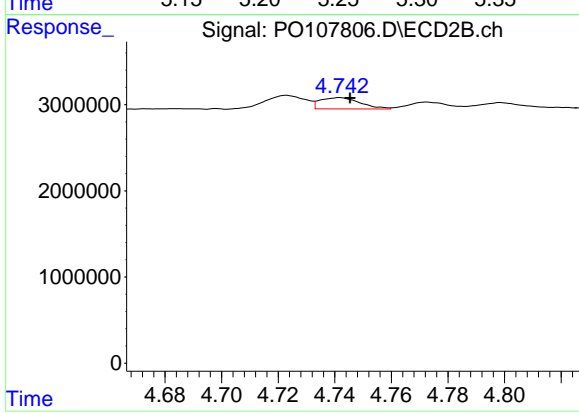
#11 AR-1232-1

R.T.: 4.014 min  
 Delta R.T.: -0.004 min  
 Response: 504733  
 Conc: 7.50 ng/ml



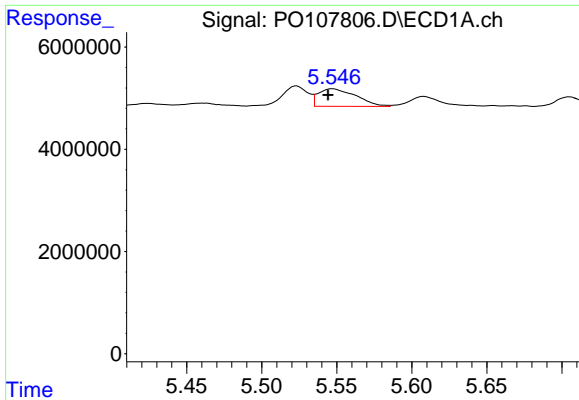
#12 AR-1232-2

R.T.: 5.257 min  
 Delta R.T.: 0.000 min  
 Response: 2718440  
 Conc: 26.39 ng/ml



#12 AR-1232-2

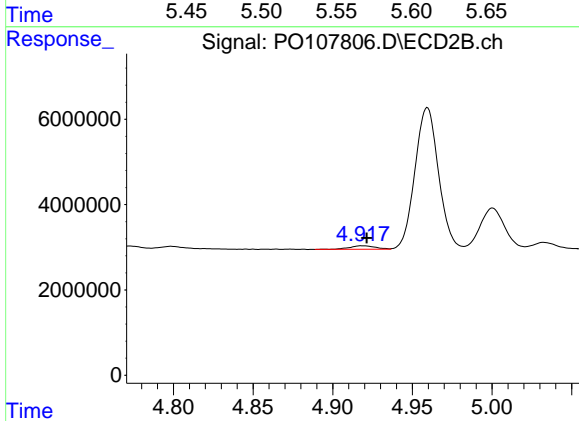
R.T.: 4.742 min  
 Delta R.T.: -0.004 min  
 Response: 1285130  
 Conc: 20.33 ng/ml



#13 AR-1232-3

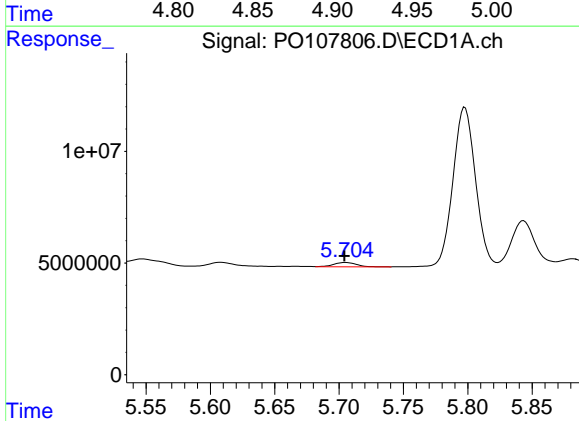
R.T.: 5.547 min  
 Delta R.T.: 0.003 min  
 Response: 5990644  
 Conc: 33.47 ng/ml

Instrument :  
 ECD\_O  
 ClientSampleId :  
 AR1254CCC500



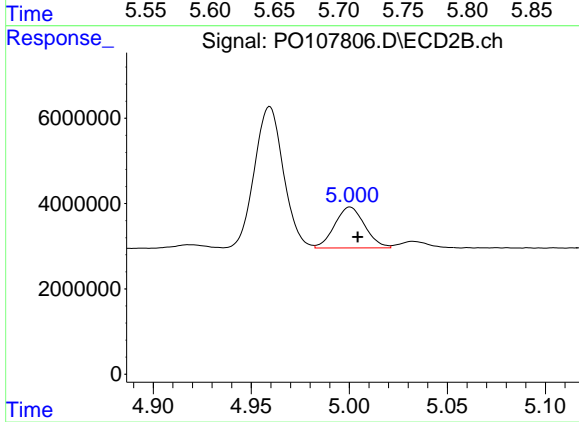
#13 AR-1232-3

R.T.: 4.919 min  
 Delta R.T.: -0.003 min  
 Response: 952060  
 Conc: 27.62 ng/ml



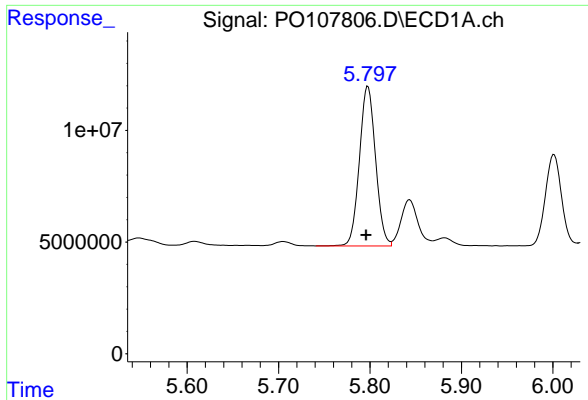
#14 AR-1232-4

R.T.: 5.705 min  
 Delta R.T.: 0.001 min  
 Response: 2393084  
 Conc: 26.54 ng/ml



#14 AR-1232-4

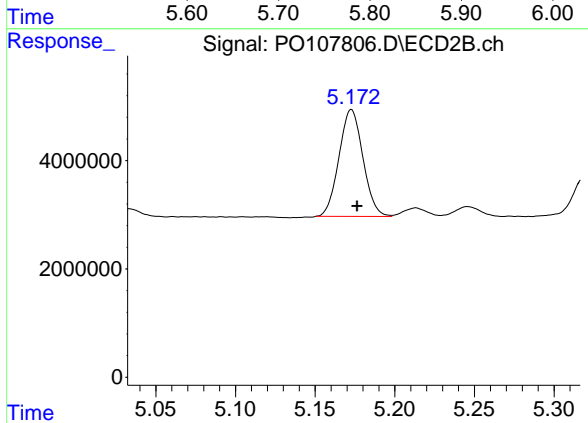
R.T.: 5.000 min  
 Delta R.T.: -0.004 min  
 Response: 10233986  
 Conc: 325.24 ng/ml



#15 AR-1232-5

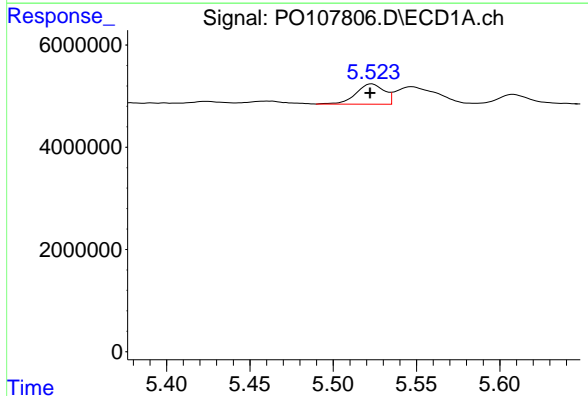
R.T.: 5.798 min  
 Delta R.T.: 0.002 min  
 Response: 87359108  
 Conc: 1325.57 ng/ml

Instrument :  
 ECD\_O  
 ClientSampleId :  
 AR1254CCC500



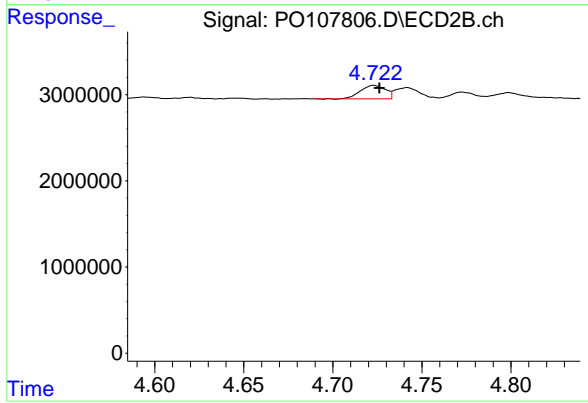
#15 AR-1232-5

R.T.: 5.173 min  
 Delta R.T.: -0.004 min  
 Response: 20657127  
 Conc: 624.40 ng/ml



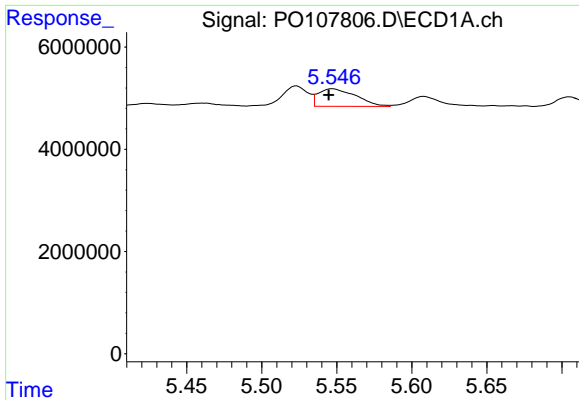
#16 AR-1242-1

R.T.: 5.523 min  
 Delta R.T.: 0.000 min  
 Response: 4649589  
 Conc: 20.79 ng/ml



#16 AR-1242-1

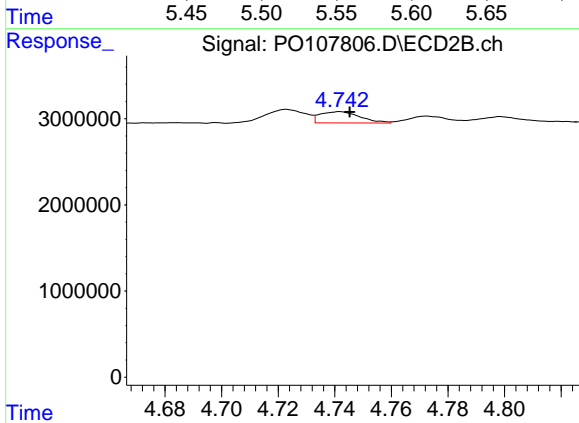
R.T.: 4.723 min  
 Delta R.T.: -0.003 min  
 Response: 1540668  
 Conc: 18.40 ng/ml



#17 AR-1242-2

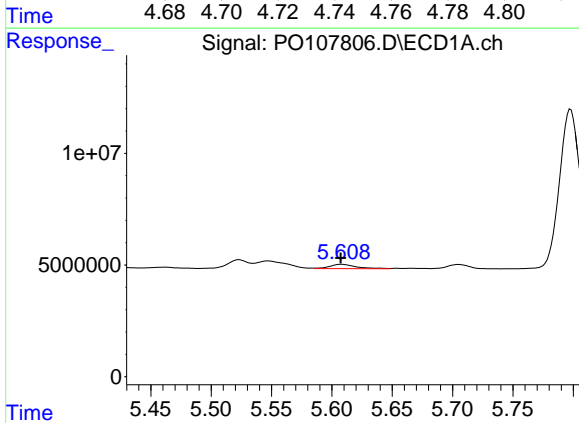
R.T.: 5.547 min  
 Delta R.T.: 0.003 min  
 Response: 5990644  
 Conc: 18.52 ng/ml

Instrument :  
 ECD\_O  
 ClientSampleId :  
 AR1254CCC500



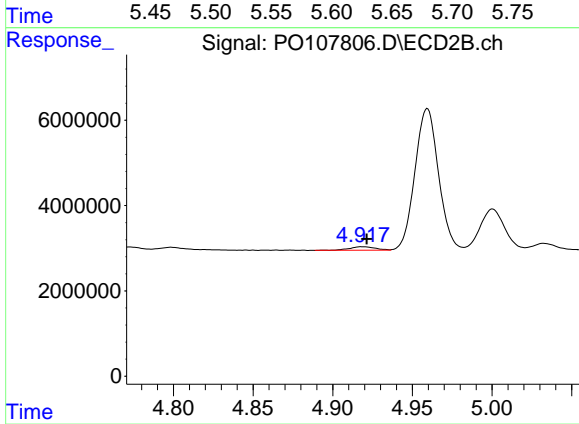
#17 AR-1242-2

R.T.: 4.742 min  
 Delta R.T.: -0.004 min  
 Response: 1285130  
 Conc: 11.11 ng/ml



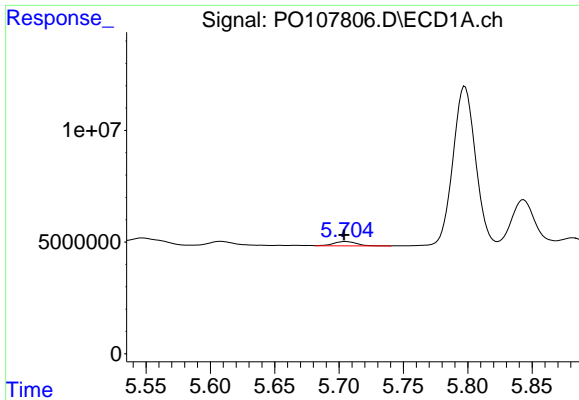
#18 AR-1242-3

R.T.: 5.608 min  
 Delta R.T.: 0.000 min  
 Response: 2929088  
 Conc: 14.02 ng/ml



#18 AR-1242-3

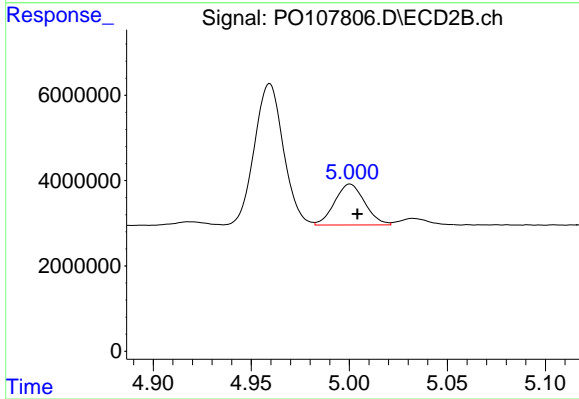
R.T.: 4.919 min  
 Delta R.T.: -0.003 min  
 Response: 952060  
 Conc: 15.01 ng/ml



#19 AR-1242-4

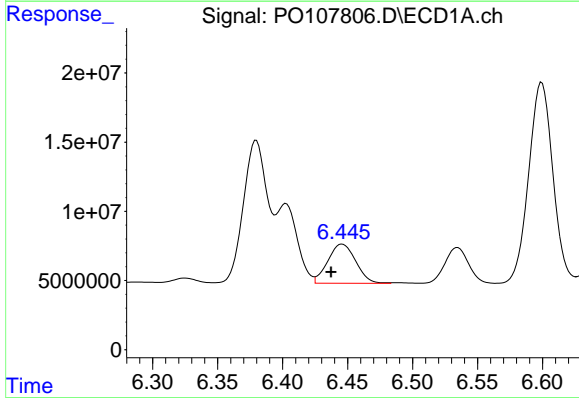
R.T.: 5.705 min  
 Delta R.T.: 0.001 min  
 Response: 2393084  
 Conc: 14.96 ng/ml

Instrument :  
 ECD\_O  
 ClientSampleId :  
 AR1254CCC500



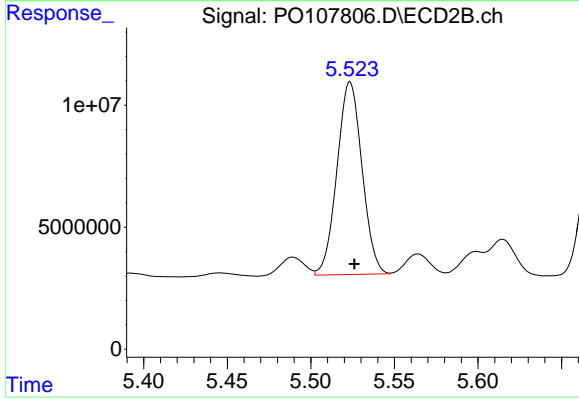
#19 AR-1242-4

R.T.: 5.000 min  
 Delta R.T.: -0.004 min  
 Response: 10233986  
 Conc: 159.78 ng/ml



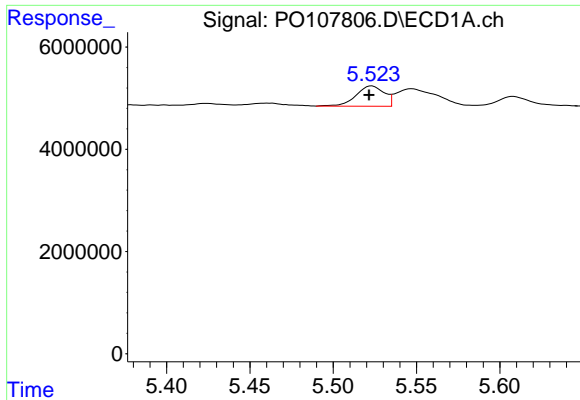
#20 AR-1242-5

R.T.: 6.446 min  
 Delta R.T.: 0.009 min  
 Response: 42370419  
 Conc: 270.77 ng/ml



#20 AR-1242-5

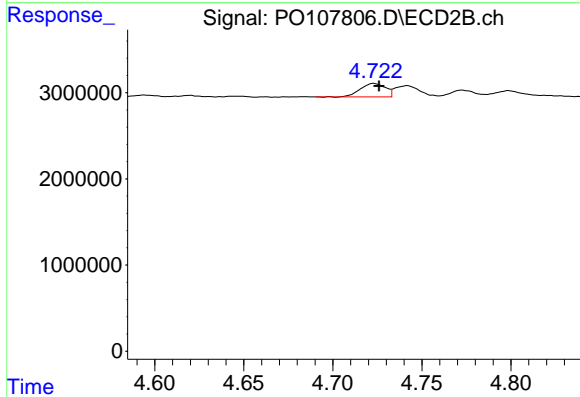
R.T.: 5.524 min  
 Delta R.T.: -0.003 min  
 Response: 82305357  
 Conc: 1061.68 ng/ml



#21 AR-1248-1

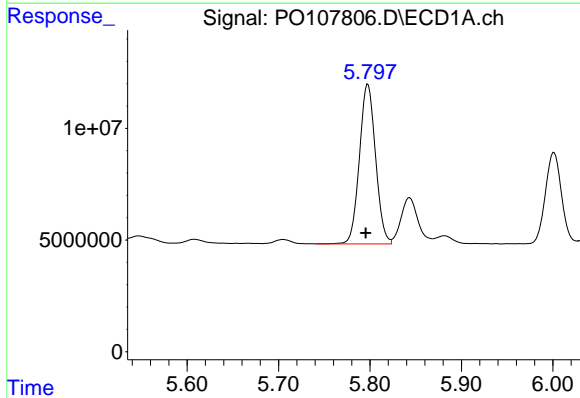
R.T.: 5.523 min  
 Delta R.T.: 0.002 min  
 Response: 4649589  
 Conc: 26.74 ng/ml

Instrument :  
 ECD\_O  
 ClientSampleId :  
 AR1254CCC500



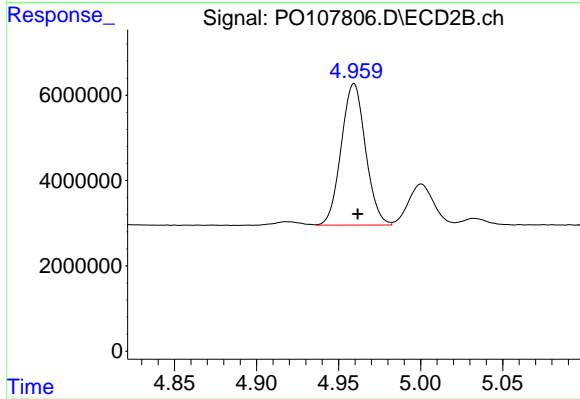
#21 AR-1248-1

R.T.: 4.723 min  
 Delta R.T.: -0.003 min  
 Response: 1540668  
 Conc: 24.28 ng/ml



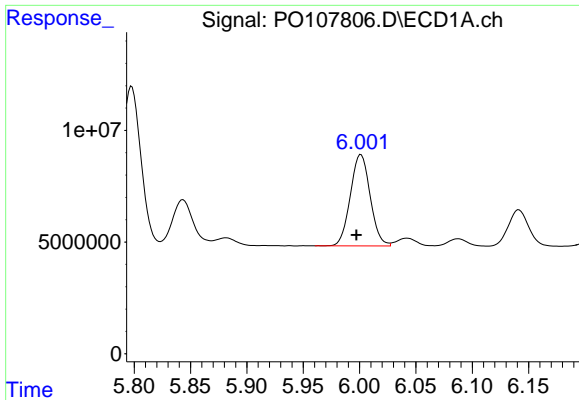
#22 AR-1248-2

R.T.: 5.798 min  
 Delta R.T.: 0.002 min  
 Response: 87359108  
 Conc: 345.26 ng/ml



#22 AR-1248-2

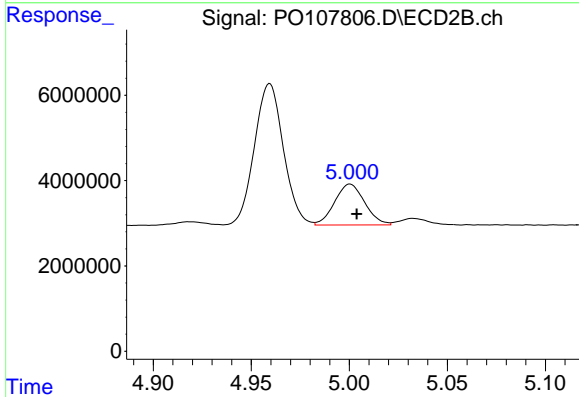
R.T.: 4.959 min  
 Delta R.T.: -0.002 min  
 Response: 34183178  
 Conc: 373.65 ng/ml



#23 AR-1248-3

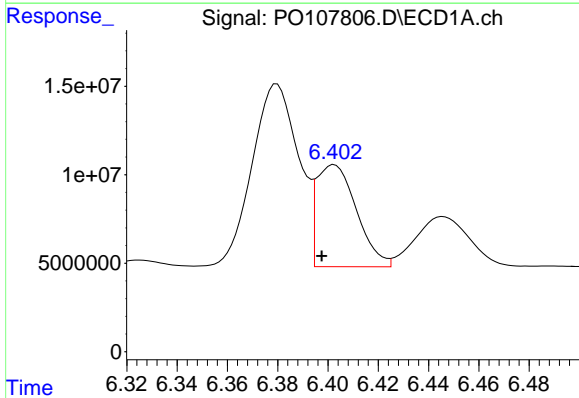
R.T.: 6.001 min  
 Delta R.T.: 0.004 min  
 Response: 49939894  
 Conc: 195.32 ng/ml

Instrument :  
 ECD\_O  
 ClientSampleId :  
 AR1254CCC500



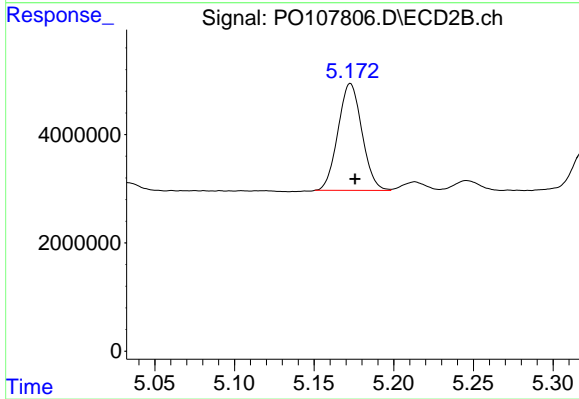
#23 AR-1248-3

R.T.: 5.000 min  
 Delta R.T.: -0.003 min  
 Response: 10233986  
 Conc: 107.28 ng/ml



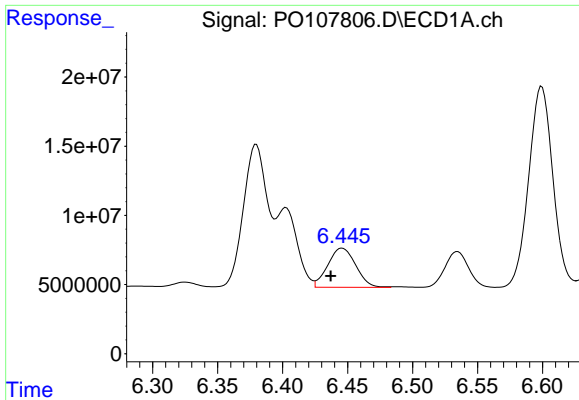
#24 AR-1248-4

R.T.: 6.403 min  
 Delta R.T.: 0.005 min  
 Response: 63485801  
 Conc: 246.24 ng/ml



#24 AR-1248-4

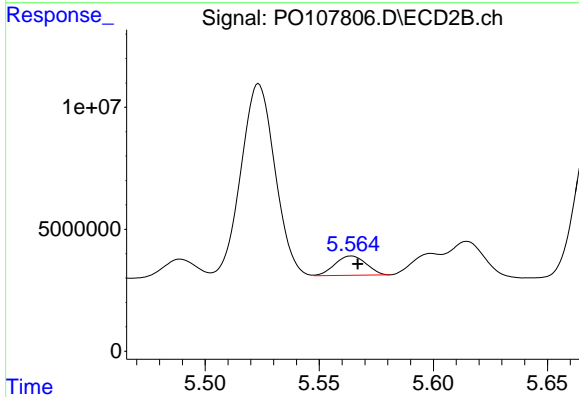
R.T.: 5.173 min  
 Delta R.T.: -0.003 min  
 Response: 20657127  
 Conc: 184.21 ng/ml



#25 AR-1248-5

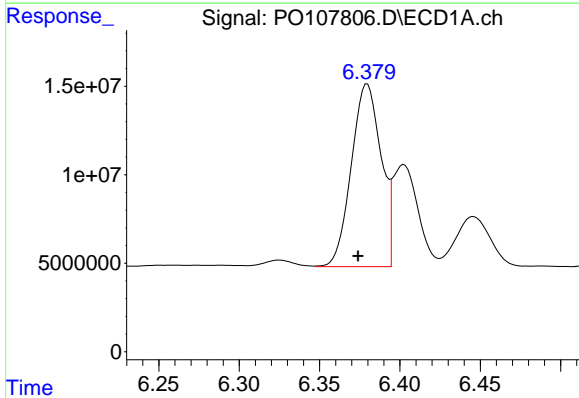
R.T.: 6.446 min  
 Delta R.T.: 0.009 min  
 Response: 42370419  
 Conc: 162.94 ng/ml

Instrument :  
 ECD\_O  
 ClientSampleId :  
 AR1254CCC500



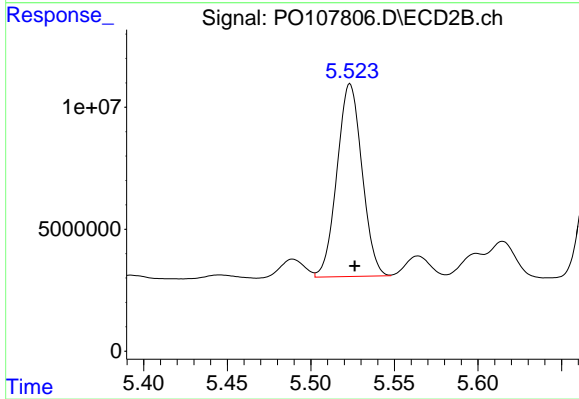
#25 AR-1248-5

R.T.: 5.564 min  
 Delta R.T.: -0.003 min  
 Response: 7576383  
 Conc: 68.71 ng/ml



#26 AR-1254-1

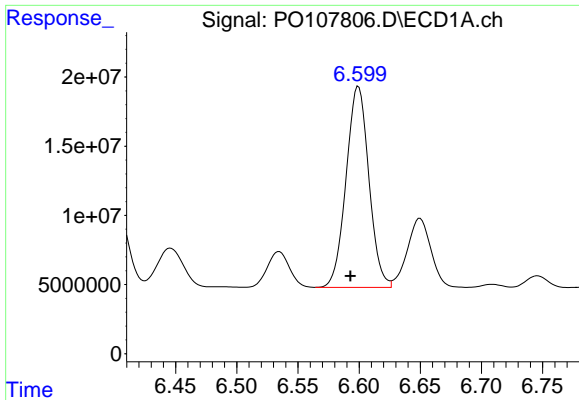
R.T.: 6.380 min  
 Delta R.T.: 0.006 min  
 Response: 132796882  
 Conc: 494.13 ng/ml



#26 AR-1254-1

R.T.: 5.524 min  
 Delta R.T.: -0.003 min  
 Response: 82305357  
 Conc: 499.46 ng/ml

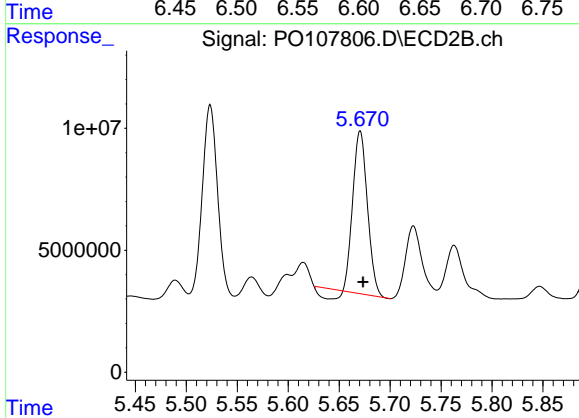




#27 AR-1254-2

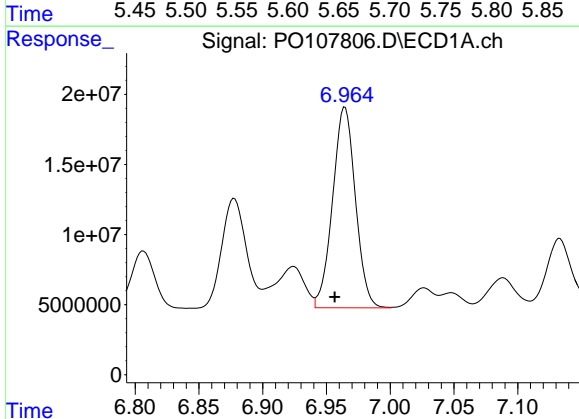
R.T.: 6.599 min  
 Delta R.T.: 0.007 min  
 Response: 188424686  
 Conc: 499.26 ng/ml

Instrument :  
 ECD\_O  
 ClientSampleId :  
 AR1254CCC500



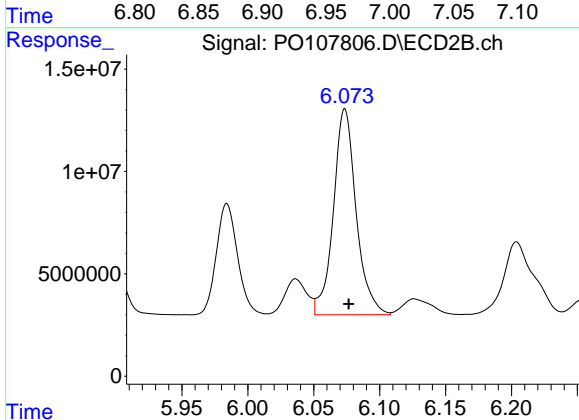
#27 AR-1254-2

R.T.: 5.671 min  
 Delta R.T.: -0.003 min  
 Response: 63499051  
 Conc: 438.04 ng/ml



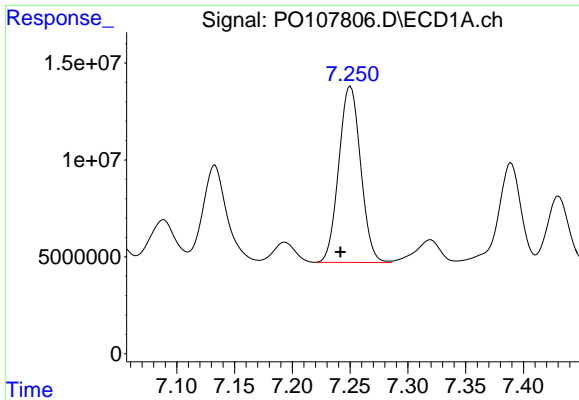
#28 AR-1254-3

R.T.: 6.965 min  
 Delta R.T.: 0.008 min  
 Response: 178491281  
 Conc: 498.86 ng/ml



#28 AR-1254-3

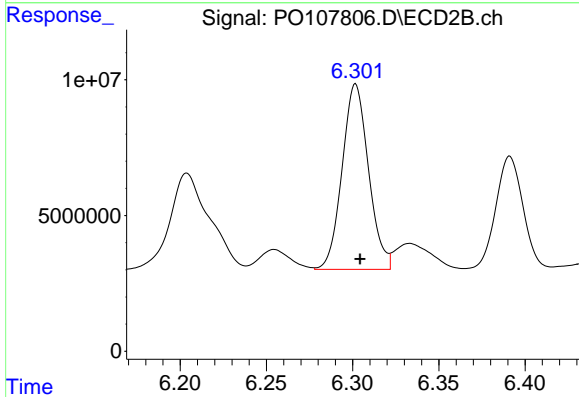
R.T.: 6.074 min  
 Delta R.T.: -0.003 min  
 Response: 120863843  
 Conc: 526.36 ng/ml



#29 AR-1254-4

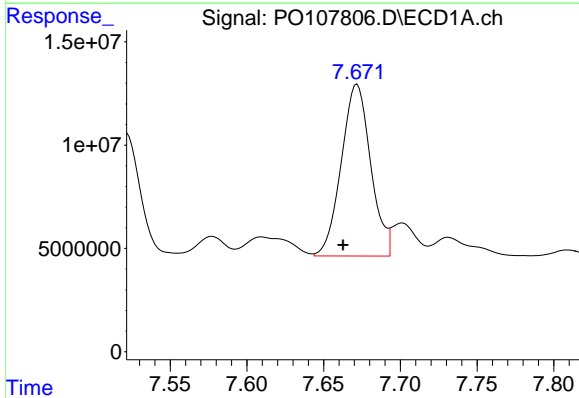
R.T.: 7.250 min  
 Delta R.T.: 0.009 min  
 Response: 119410976  
 Conc: 520.50 ng/ml

Instrument :  
 ECD\_O  
 ClientSampleId :  
 AR1254CCC500



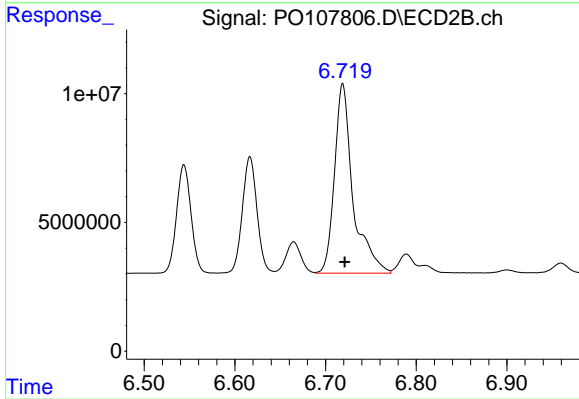
#29 AR-1254-4

R.T.: 6.302 min  
 Delta R.T.: -0.003 min  
 Response: 72695021  
 Conc: 561.68 ng/ml



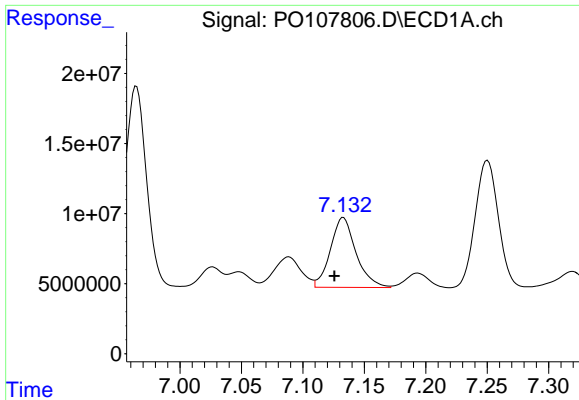
#30 AR-1254-5

R.T.: 7.672 min  
 Delta R.T.: 0.009 min  
 Response: 111111191  
 Conc: 535.10 ng/ml



#30 AR-1254-5

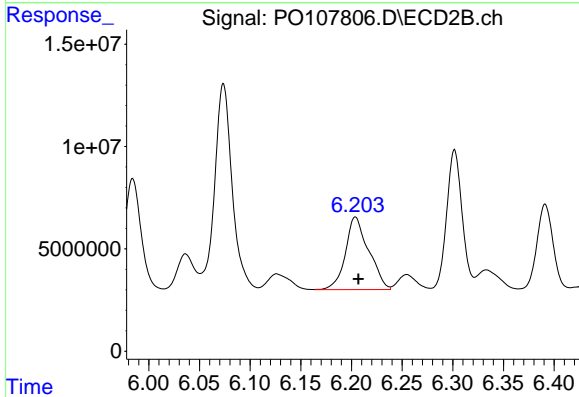
R.T.: 6.719 min  
 Delta R.T.: -0.002 min  
 Response: 104322778  
 Conc: 546.04 ng/ml



#31 AR-1260-1

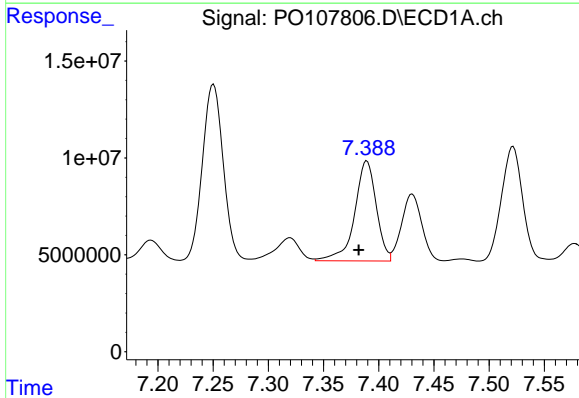
R.T.: 7.133 min  
 Delta R.T.: 0.007 min  
 Response: 72408201  
 Conc: 280.01 ng/ml

Instrument :  
 ECD\_O  
 ClientSampleId :  
 AR1254CCC500



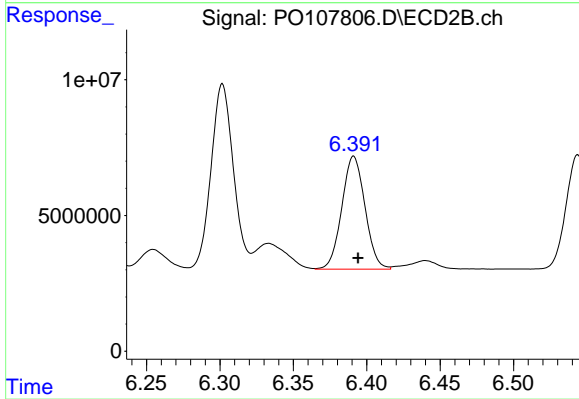
#31 AR-1260-1

R.T.: 6.204 min  
 Delta R.T.: -0.003 min  
 Response: 56634027  
 Conc: 365.02 ng/ml



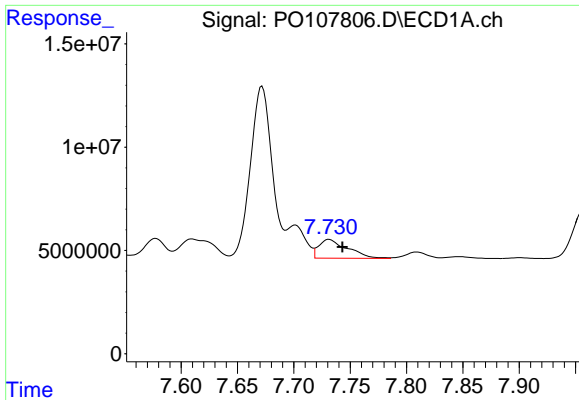
#32 AR-1260-2

R.T.: 7.389 min  
 Delta R.T.: 0.007 min  
 Response: 70380959  
 Conc: 267.38 ng/ml



#32 AR-1260-2

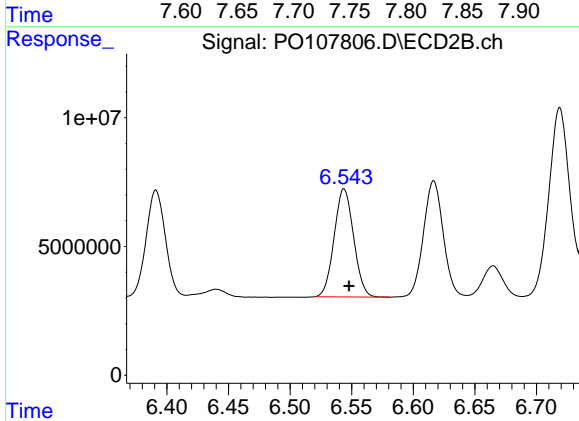
R.T.: 6.391 min  
 Delta R.T.: -0.003 min  
 Response: 45757486  
 Conc: 259.82 ng/ml



#33 AR-1260-3

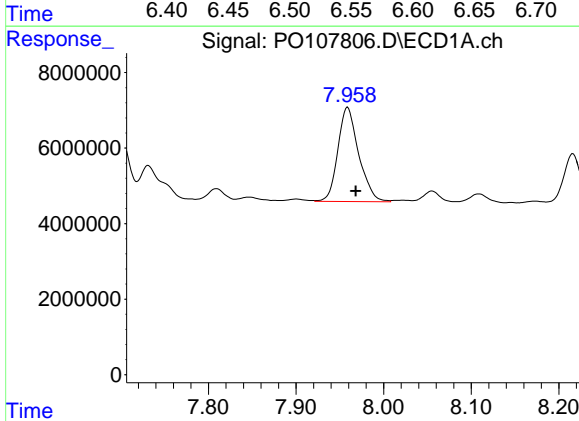
R.T.: 7.731 min  
 Delta R.T.: -0.012 min  
 Response: 16163900  
 Conc: 89.93 ng/ml

Instrument :  
 ECD\_O  
 ClientSampleId :  
 AR1254CCC500



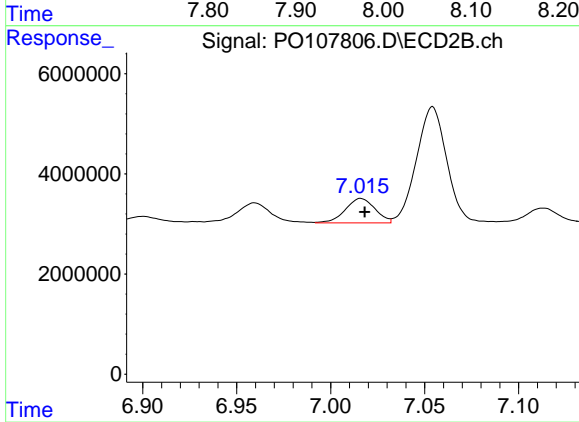
#33 AR-1260-3

R.T.: 6.544 min  
 Delta R.T.: -0.004 min  
 Response: 46117452  
 Conc: 274.92 ng/ml



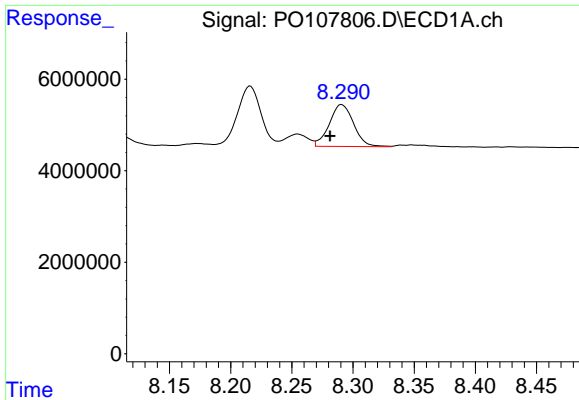
#34 AR-1260-4

R.T.: 7.959 min  
 Delta R.T.: -0.009 min  
 Response: 41328179  
 Conc: 235.48 ng/ml



#34 AR-1260-4

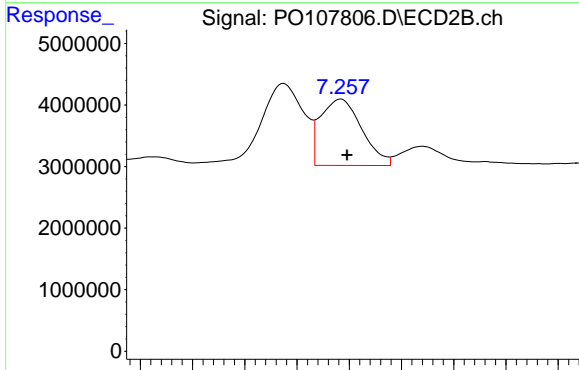
R.T.: 7.016 min  
 Delta R.T.: -0.002 min  
 Response: 5361517  
 Conc: 37.06 ng/ml



#35 AR-1260-5

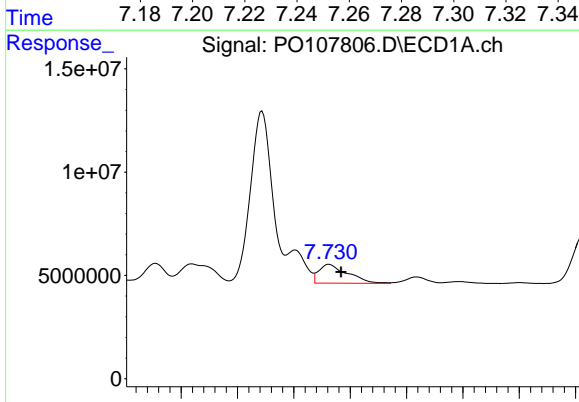
R.T.: 8.291 min  
 Delta R.T.: 0.010 min  
 Response: 12627483  
 Conc: 44.40 ng/ml

Instrument :  
 ECD\_O  
 ClientSampleId :  
 AR1254CCC500



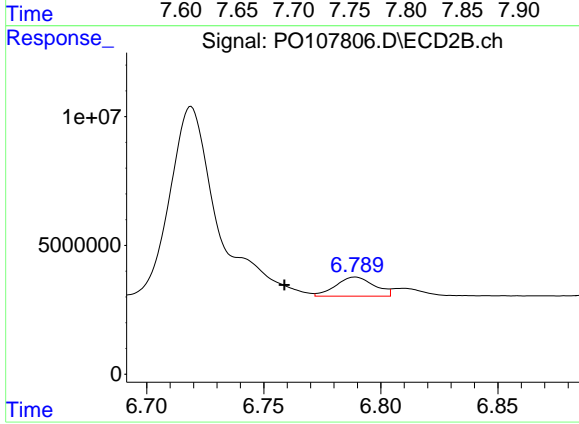
#35 AR-1260-5

R.T.: 7.257 min  
 Delta R.T.: -0.002 min  
 Response: 11816378  
 Conc: 35.87 ng/ml



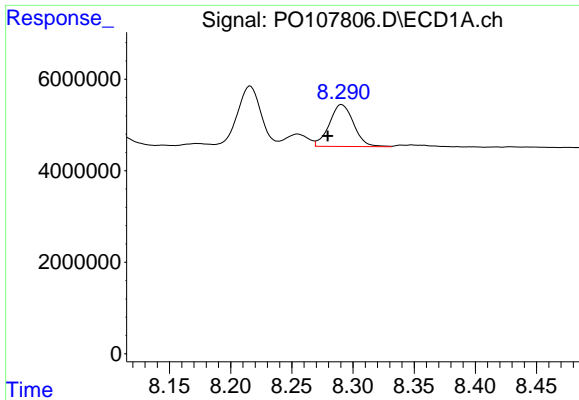
#36 AR-1262-1

R.T.: 7.731 min  
 Delta R.T.: -0.011 min  
 Response: 16163900  
 Conc: 65.83 ng/ml



#36 AR-1262-1

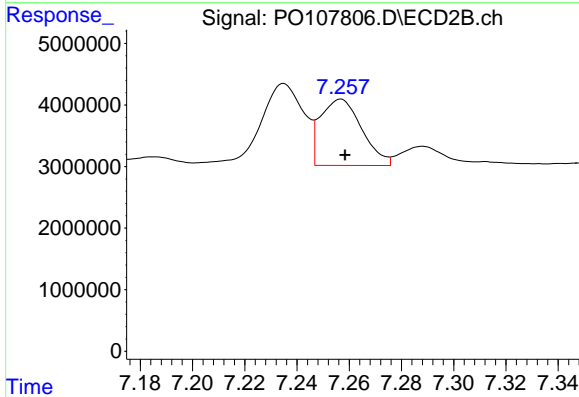
R.T.: 6.789 min  
 Delta R.T.: 0.030 min  
 Response: 8509273  
 Conc: 39.97 ng/ml



#37 AR-1262-2

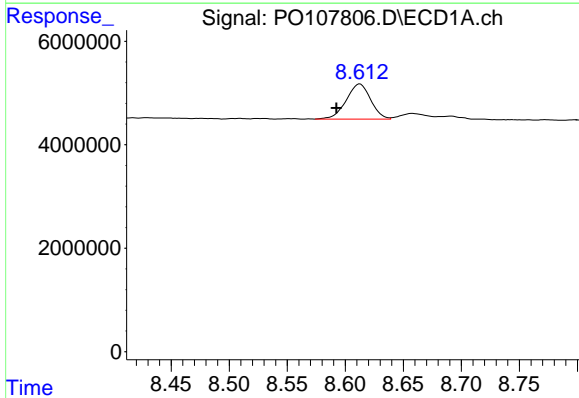
R.T.: 8.291 min  
 Delta R.T.: 0.012 min  
 Response: 12627483  
 Conc: 40.81 ng/ml

Instrument :  
 ECD\_O  
 ClientSampleId :  
 AR1254CCC500



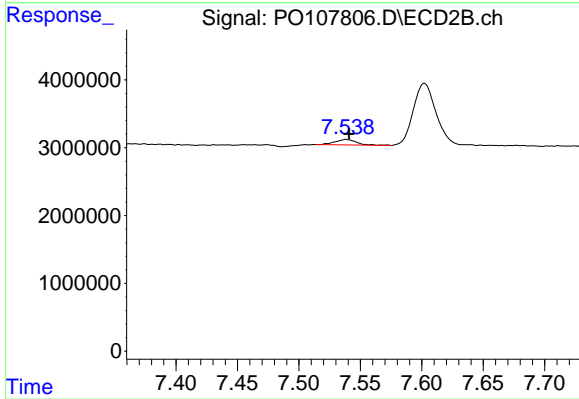
#37 AR-1262-2

R.T.: 7.257 min  
 Delta R.T.: -0.002 min  
 Response: 11816378  
 Conc: 32.52 ng/ml



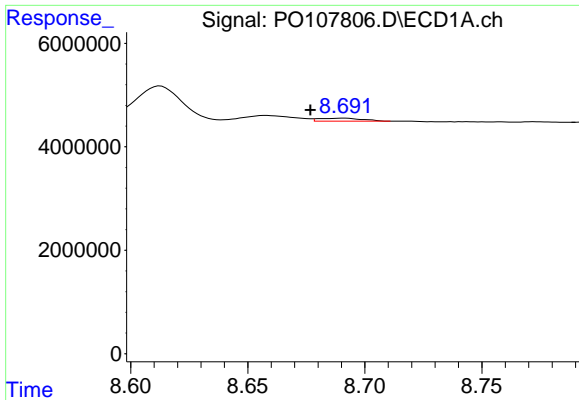
#38 AR-1262-3

R.T.: 8.613 min  
 Delta R.T.: 0.020 min  
 Response: 9958012  
 Conc: 47.60 ng/ml



#38 AR-1262-3

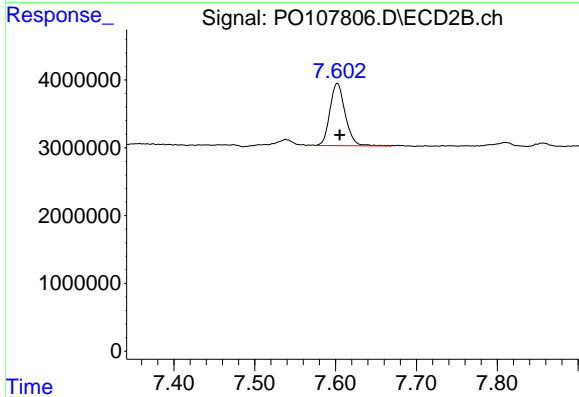
R.T.: 7.538 min  
 Delta R.T.: -0.003 min  
 Response: 959084  
 Conc: 6.98 ng/ml



#39 AR-1262-4

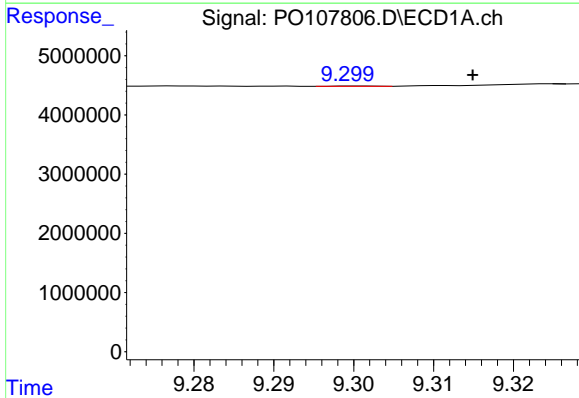
R.T.: 8.691 min  
 Delta R.T.: 0.015 min  
 Response: 755136  
 Conc: 4.63 ng/ml

Instrument :  
 ECD\_O  
 ClientSampleId :  
 AR1254CCC500



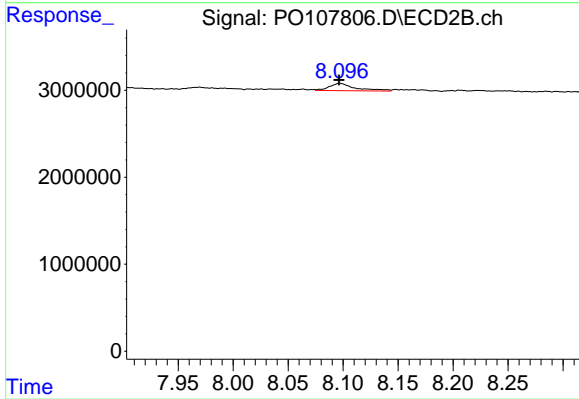
#39 AR-1262-4

R.T.: 7.602 min  
 Delta R.T.: -0.003 min  
 Response: 12035708  
 Conc: 45.49 ng/ml



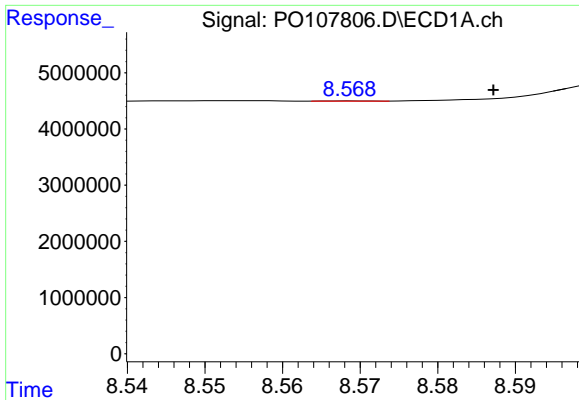
#40 AR-1262-5

R.T.: 9.301 min  
 Delta R.T.: -0.014 min  
 Response: 13738  
 Conc: 0.13 ng/ml



#40 AR-1262-5

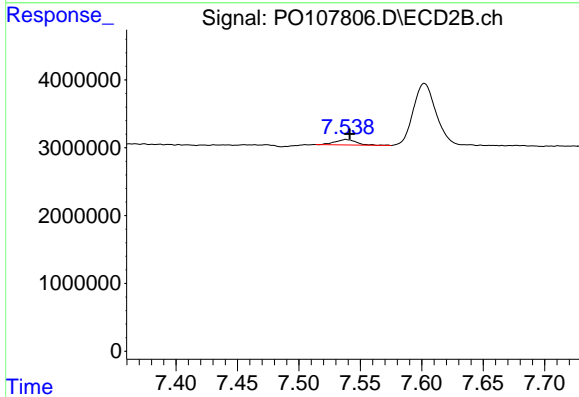
R.T.: 8.097 min  
 Delta R.T.: 0.000 min  
 Response: 1372587  
 Conc: 12.16 ng/ml



#41 AR-1268-1

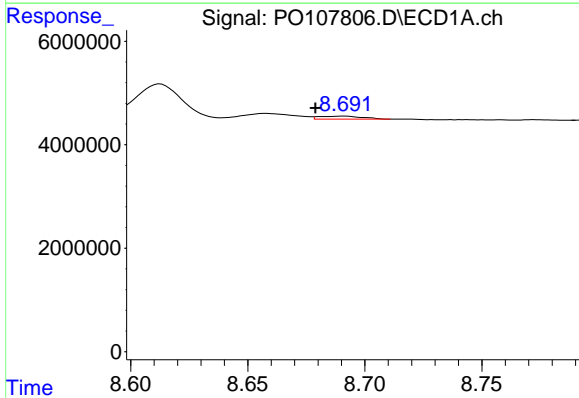
R.T.: 8.569 min  
 Delta R.T.: -0.018 min  
 Response: 11576  
 Conc: 0.03 ng/ml

Instrument :  
 ECD\_O  
 ClientSampleId :  
 AR1254CCC500



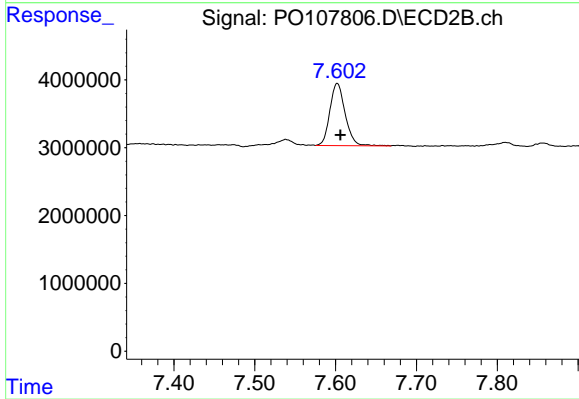
#41 AR-1268-1

R.T.: 7.538 min  
 Delta R.T.: -0.003 min  
 Response: 959084  
 Conc: 2.37 ng/ml



#42 AR-1268-2

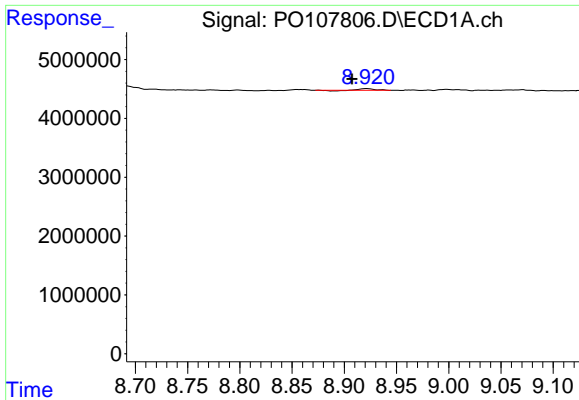
R.T.: 8.691 min  
 Delta R.T.: 0.012 min  
 Response: 755136  
 Conc: 2.34 ng/ml



#42 AR-1268-2

R.T.: 7.602 min  
 Delta R.T.: -0.004 min  
 Response: 12035708  
 Conc: 32.24 ng/ml

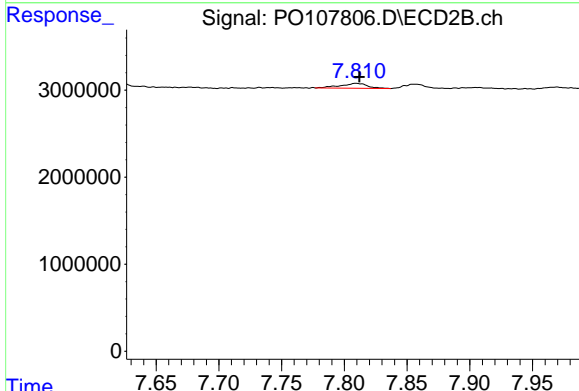




#43 AR-1268-3

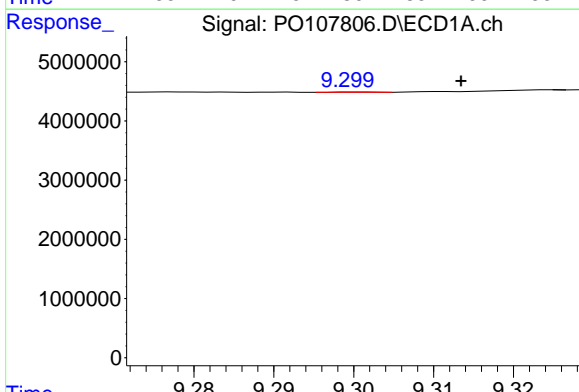
R.T.: 8.921 min  
 Delta R.T.: 0.013 min  
 Response: 210376  
 Conc: 0.75 ng/ml

Instrument :  
 ECD\_O  
 ClientSampleId :  
 AR1254CCC500



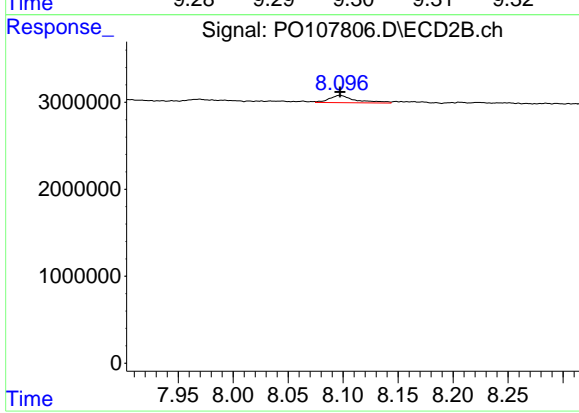
#43 AR-1268-3

R.T.: 7.810 min  
 Delta R.T.: -0.002 min  
 Response: 837988  
 Conc: 2.51 ng/ml



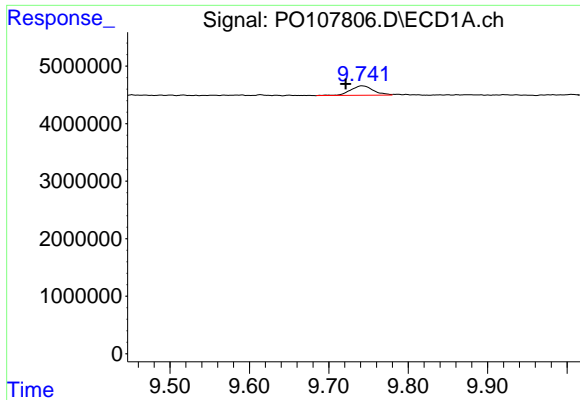
#44 AR-1268-4

R.T.: 9.301 min  
 Delta R.T.: -0.013 min  
 Response: 13738  
 Conc: 0.12 ng/ml



#44 AR-1268-4

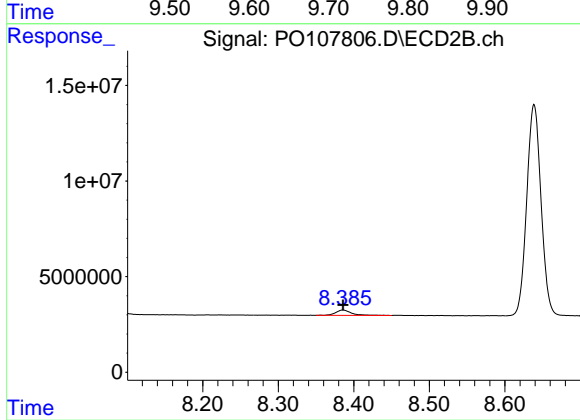
R.T.: 8.097 min  
 Delta R.T.: 0.000 min  
 Response: 1372587  
 Conc: 10.95 ng/ml



#45 AR-1268-5

R.T.: 9.742 min  
 Delta R.T.: 0.021 min  
 Response: 3304518  
 Conc: 3.97 ng/ml

Instrument :  
 ECD\_O  
 ClientSampleId :  
 AR1254CCC500



#45 AR-1268-5

R.T.: 8.386 min  
 Delta R.T.: 0.000 min  
 Response: 4078893  
 Conc: 4.13 ng/ml