

Data Path : Z:\pestpcbsrv\HPCHEM1\ECD_0\Data\PO110824\
 Data File : PO107828.D
 Signal(s) : Signal #1: ECD1A.ch Signal #2: ECD2B.ch
 Acq On : 08 Nov 2024 20:37
 Operator : YP/AJ
 Sample : AR1248CCC500
 Misc :
 ALS Vial : 5 Sample Multiplier: 1

Instrument :
 ECD_0
 ClientSampleId :
 AR1248CCC500

Integration File signal 1: autoint1.e
 Integration File signal 2: autoint2.e
 Quant Time: Nov 09 01:46:39 2024
 Quant Method : Z:\pestpcbsrv\HPCHEM1\ECD_0\methods\PO101524.M
 Quant Title : GC EXTRACTABLES
 QLast Update : Mon Oct 28 11:34:55 2024
 Response via : Initial Calibration
 Integrator: ChemStation

Volume Inj. : 2 µl
 Signal #1 Phase : ZB-MR1 Signal #2 Phase: ZB-MR2
 Signal #1 Info : 30Mx0.32mmx 0.50µ Signal #2 Info : 30M x 0.32mm x 0.25µm

Compound	RT#1	RT#2	Resp#1	Resp#2	ng/ml	ng/ml
System Monitoring Compounds						
1) SA Tetrachlo...	4.373	3.642	477.6E6	177.6E6	52.407	55.186
2) SA Decachlor...	10.082	8.639	120.7E6	141.2E6	49.192	51.486
Target Compounds						
3) L1 AR-1016-1	5.524	4.723	90171579	33586793	334.199	325.246
4) L1 AR-1016-2	5.547	4.742	107.2E6	34951597	270.167	247.940
5) L1 AR-1016-3	5.609	4.919	53344731	23412842	212.385	297.322 #
6) L1 AR-1016-4	5.706	4.959	58618039	46106212	304.332	697.434 #
7) L1 AR-1016-5	6.002	5.173	130.2E6	58175659	713.004	708.303
8) L2 AR-1221-1	4.566	3.851	3605674	408838	32.333	11.280 #
9) L2 AR-1221-2	4.672	3.941	8568704	3451766	104.602	118.602
10) L2 AR-1221-3	4.733	4.014	10932613	3185666	45.688	36.101
11) L3 AR-1232-1	4.733	4.014	10932613	3185666	55.823	47.316
12) L3 AR-1232-2	5.259	4.742	42838609	34951597	415.807	552.985 #
13) L3 AR-1232-3	5.547	4.919	107.2E6	23412842	599.021	679.127
14) L3 AR-1232-4	5.706	5.001	58618039	48766194	650.116	1549.808 #
15) L3 AR-1232-5	5.799	5.173	126.2E6	58175659	1914.172	1758.459
16) L4 AR-1242-1	5.524	4.723	90171579	33586793	403.197	401.068
17) L4 AR-1242-2	5.547	4.742	107.2E6	34951597	331.432	302.248
18) L4 AR-1242-3	5.609	4.919	53344731	23412842	255.266	369.094 #
19) L4 AR-1242-4	5.706	5.001	58618039	48766194	366.350	761.385 #
20) L4 AR-1242-5	6.444	5.523	128.4E6	76875221	820.704	991.637
21) L5 AR-1248-1	5.524	4.723	90171579	33586793	518.596	529.417
22) L5 AR-1248-2	5.799	4.959	126.2E6	46106212	498.567	503.975
23) L5 AR-1248-3	6.002	5.001	130.2E6	48766194	509.346	511.212
24) L5 AR-1248-4	6.405	5.173	132.7E6	58175659	514.724	518.785
25) L5 AR-1248-5	6.444	5.565	128.4E6	51178047	493.862	464.118
26) L6 AR-1254-1	6.378	5.523	100.9E6	76875221	375.566	466.509
27) L6 AR-1254-2	6.601	5.671	122.6E6	19701018	324.940	135.904 #
28) L6 AR-1254-3	6.966	6.074	63814907	37183111	178.355	161.933
29) L6 AR-1254-4	7.251	6.302	41236161	24701987	179.745	190.862
30) L6 AR-1254-5	7.673	6.719	10445822	7681143	50.306	40.204
31) L7 AR-1260-1	7.135	6.219	8248811	13927816	31.899	89.767 #
32) L7 AR-1260-2	7.390	6.391	5670594	3552283	21.543	20.170
33) L7 AR-1260-3	7.734	6.544	4442174	3759175	24.714	22.410
34) L7 AR-1260-4	7.959	7.016	5886872	726746	33.543	5.023 #
35) L7 AR-1260-5	8.292	7.257	1643104	1517306	5.778	4.606
36) L8 AR-1262-1	7.734	6.789	4442174	968067	18.091	4.548 #
37) L8 AR-1262-2	8.292	7.257	1643104	1517306	5.310	4.176
38) L8 AR-1262-3	8.609	7.538	1384117	841886	6.616	6.128
39) L8 AR-1262-4	8.664	7.603	87142	1723275	0.534	6.513 #
40) L8 AR-1262-5	9.319	8.097	87659	845961	0.853	7.497 #
41) L9 AR-1268-1	8.609	7.538	1384117	841886	3.802	2.081 #

Data Path : Z:\pestpcbsrv\HPCHEM1\ECD_0\Data\PO110824\
 Data File : PO107828.D
 Signal(s) : Signal #1: ECD1A.ch Signal #2: ECD2B.ch
 Acq On : 08 Nov 2024 20:37
 Operator : YP/AJ
 Sample : AR1248CCC500
 Misc :
 ALS Vial : 5 Sample Multiplier: 1

Instrument :
 ECD_0
 ClientSampleId :
 AR1248CCC500

Integration File signal 1: autoint1.e
 Integration File signal 2: autoint2.e
 Quant Time: Nov 09 01:46:39 2024
 Quant Method : Z:\pestpcbsrv\HPCHEM1\ECD_0\methods\PO101524.M
 Quant Title : GC EXTRACTABLES
 QLast Update : Mon Oct 28 11:34:55 2024
 Response via : Initial Calibration
 Integrator: ChemStation

Volume Inj. : 2 µl
 Signal #1 Phase : ZB-MR1 Signal #2 Phase: ZB-MR2
 Signal #1 Info : 30Mx0.32mmx 0.50µ Signal #2 Info : 30M x 0.32mm x 0.25µm

	Compound	RT#1	RT#2	Resp#1	Resp#2	ng/ml	ng/ml
42)	L9 AR-1268-2	8.694	7.603	704886	1723275	2.186	4.617 #
43)	L9 AR-1268-3	8.925	7.810	453039	750278	1.622	2.248 #
44)	L9 AR-1268-4	9.319	8.097	87659	845961	0.788	6.748 #
45)	L9 AR-1268-5	9.743	8.386	3058753	3174128	3.674	3.213

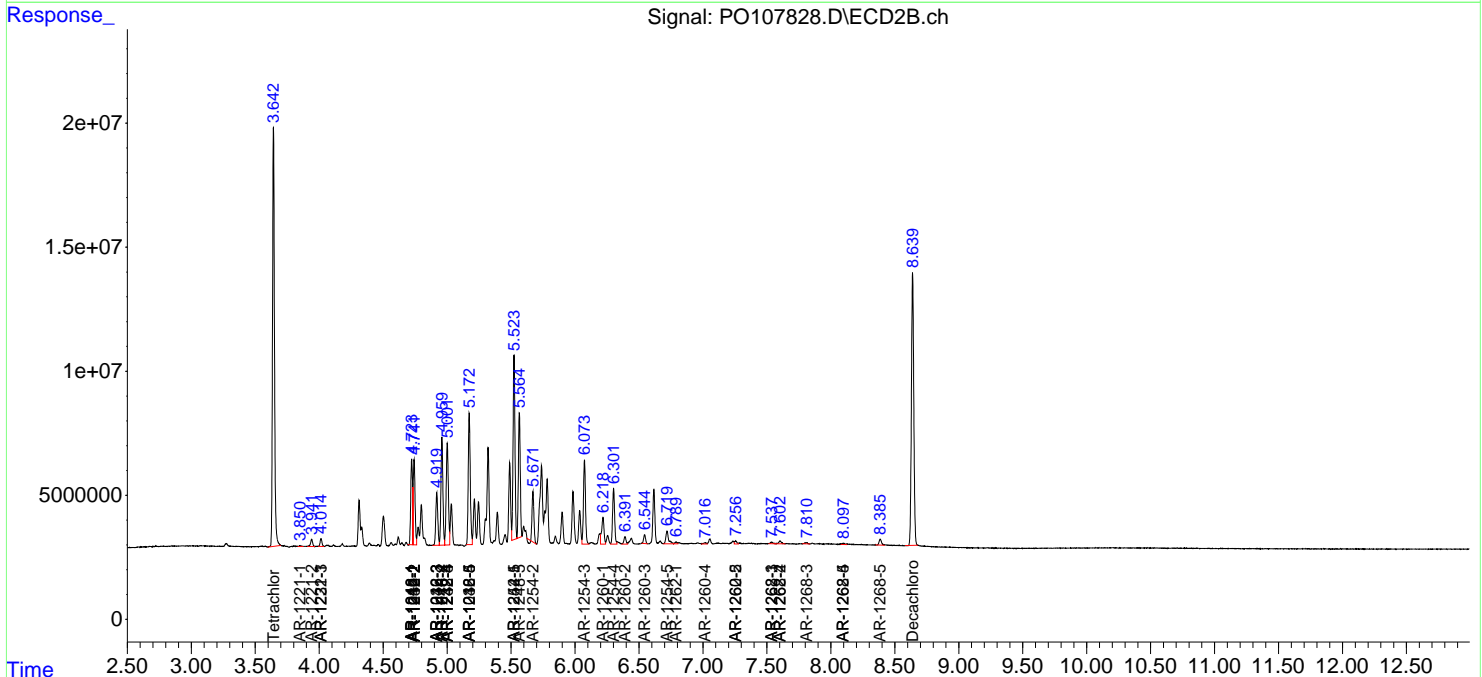
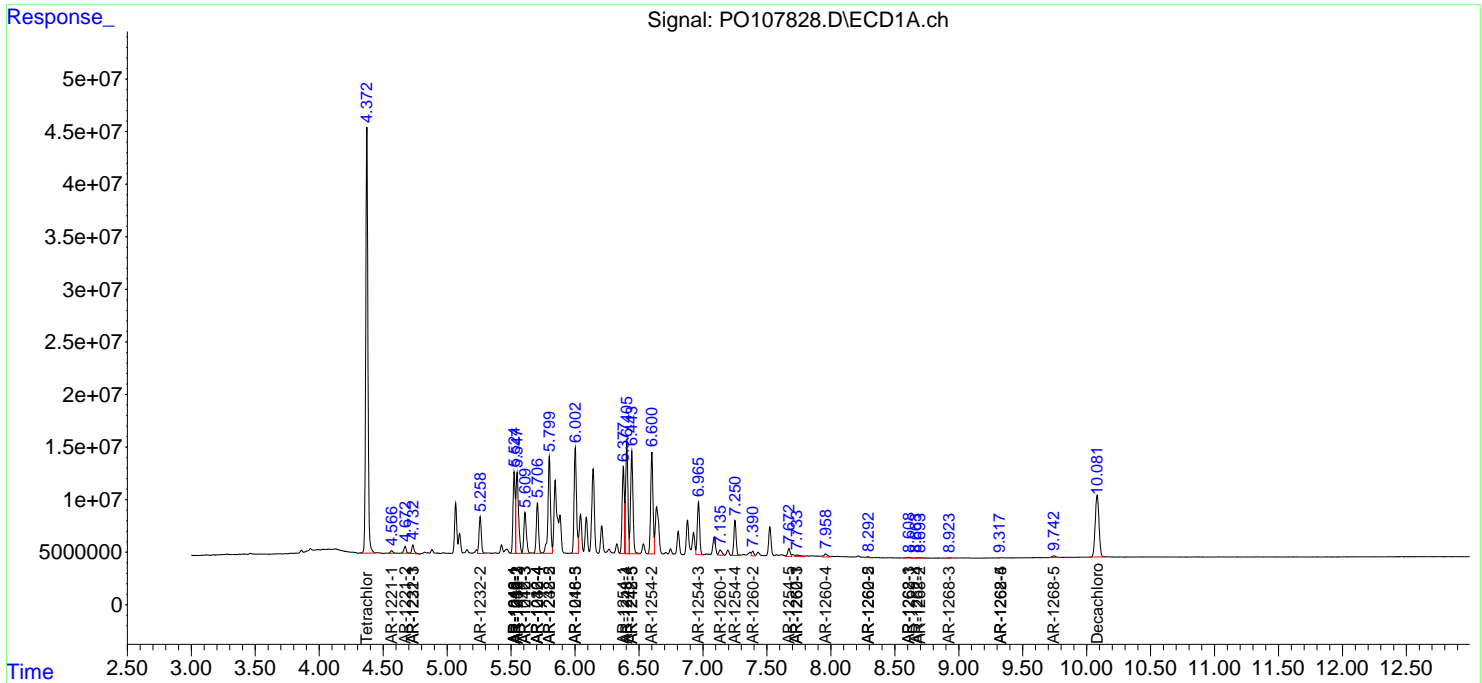
(f)=RT Delta > 1/2 Window (#)=Amounts differ by > 25% (m)=manual int.

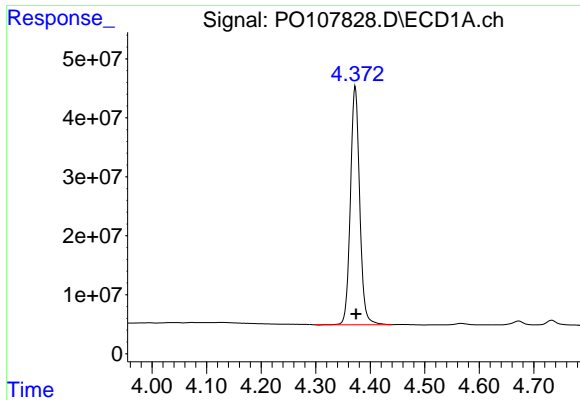
Data Path : Z:\pestpcbsrv\HPCHEM1\ECD_O\Data\PO110824\
 Data File : PO107828.D
 Signal(s) : Signal #1: ECD1A.ch Signal #2: ECD2B.ch
 Acq On : 08 Nov 2024 20:37
 Operator : YP/AJ
 Sample : AR1248CCC500
 Misc :
 ALS Vial : 5 Sample Multiplier: 1

Instrument :
 ECD_O
 ClientSampleId :
 AR1248CCC500

Integration File signal 1: autoint1.e
 Integration File signal 2: autoint2.e
 Quant Time: Nov 09 01:46:39 2024
 Quant Method : Z:\pestpcbsrv\HPCHEM1\ECD_O\methods\PO101524.M
 Quant Title : GC EXTRACTABLES
 QLast Update : Mon Oct 28 11:34:55 2024
 Response via : Initial Calibration
 Integrator: ChemStation

Volume Inj. : 2 µl
 Signal #1 Phase : ZB-MR1 Signal #2 Phase: ZB-MR2
 Signal #1 Info : 30Mx0.32mmx 0.50µ Signal #2 Info : 30M x 0.32mm x 0.25µm

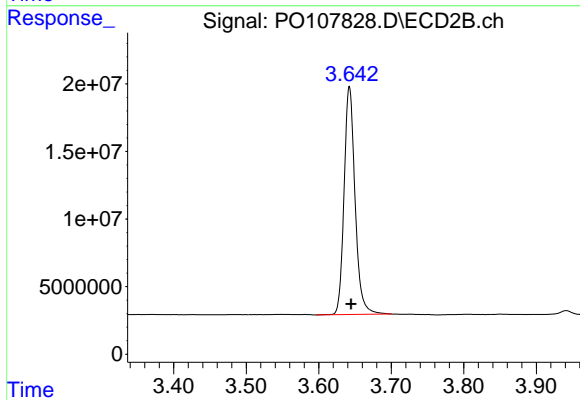




#1 Tetrachloro-m-xylene

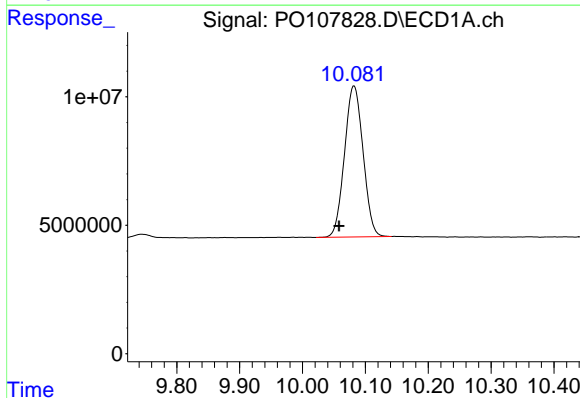
R.T.: 4.373 min
 Delta R.T.: -0.001 min
 Response: 477628513
 Conc: 52.41 ng/ml

Instrument :
 ECD_O
 ClientSampleId :
 AR1248CCC500



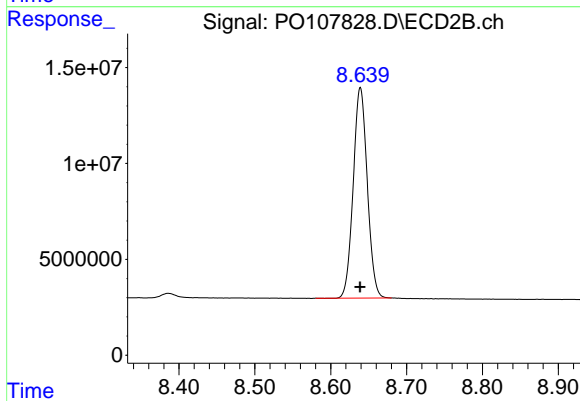
#1 Tetrachloro-m-xylene

R.T.: 3.642 min
 Delta R.T.: -0.002 min
 Response: 177614999
 Conc: 55.19 ng/ml



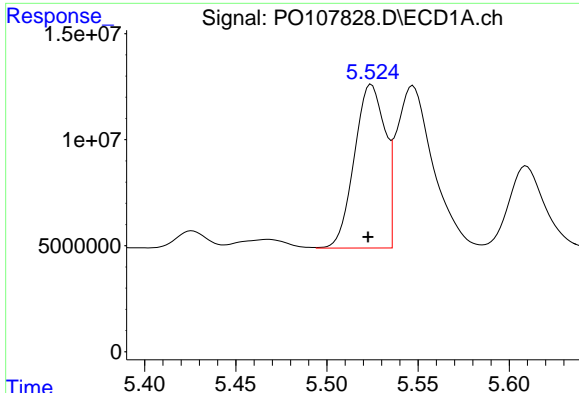
#2 Decachlorobiphenyl

R.T.: 10.082 min
 Delta R.T.: 0.024 min
 Response: 120686011
 Conc: 49.19 ng/ml



#2 Decachlorobiphenyl

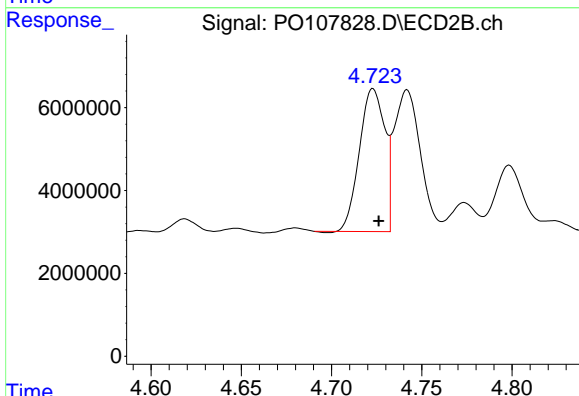
R.T.: 8.639 min
 Delta R.T.: 0.000 min
 Response: 141154991
 Conc: 51.49 ng/ml



#3 AR-1016-1

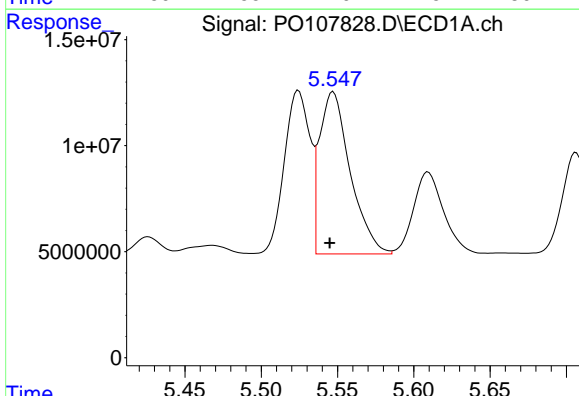
R.T.: 5.524 min
 Delta R.T.: 0.002 min
 Response: 90171579
 Conc: 334.20 ng/ml

Instrument :
 ECD_O
 ClientSampleId :
 AR1248CCC500



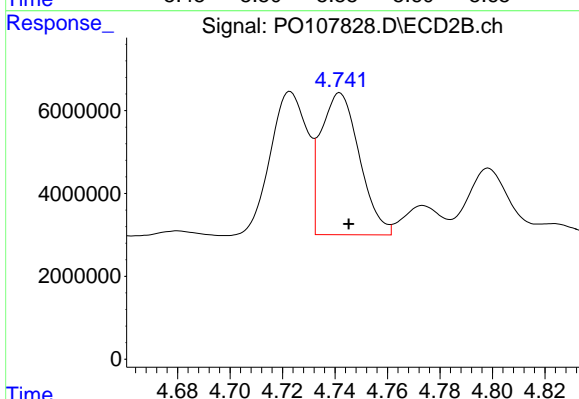
#3 AR-1016-1

R.T.: 4.723 min
 Delta R.T.: -0.003 min
 Response: 33586793
 Conc: 325.25 ng/ml



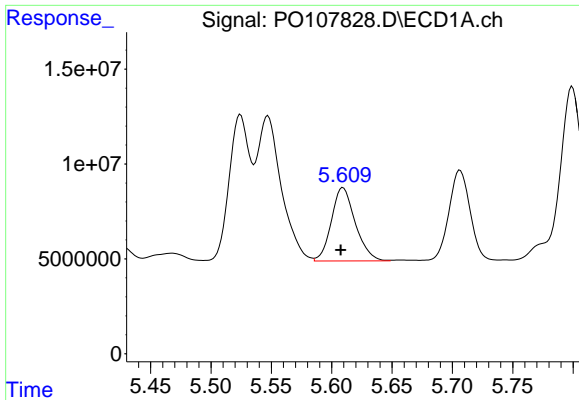
#4 AR-1016-2

R.T.: 5.547 min
 Delta R.T.: 0.002 min
 Response: 107225035
 Conc: 270.17 ng/ml



#4 AR-1016-2

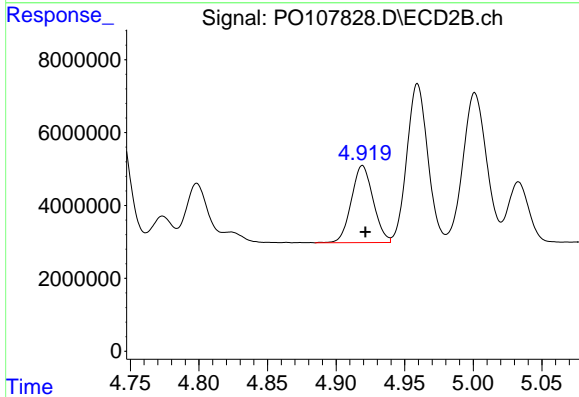
R.T.: 4.742 min
 Delta R.T.: -0.003 min
 Response: 34951597
 Conc: 247.94 ng/ml



#5 AR-1016-3

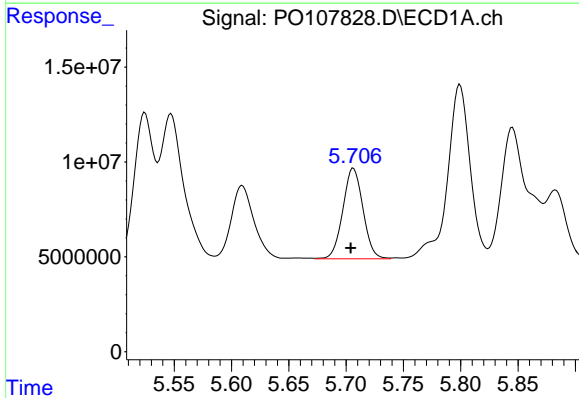
R.T.: 5.609 min
 Delta R.T.: 0.002 min
 Response: 53344731
 Conc: 212.39 ng/ml

Instrument :
 ECD_O
 ClientSampleId :
 AR1248CCC500



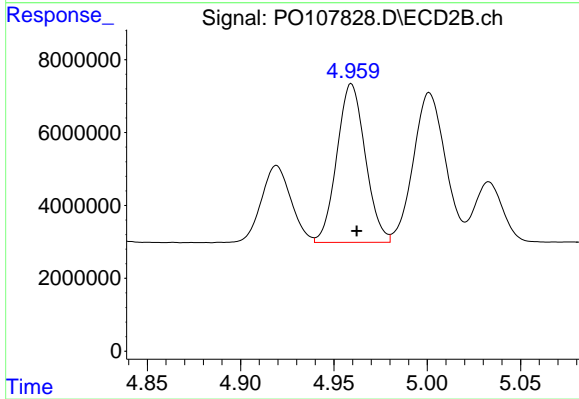
#5 AR-1016-3

R.T.: 4.919 min
 Delta R.T.: -0.002 min
 Response: 23412842
 Conc: 297.32 ng/ml



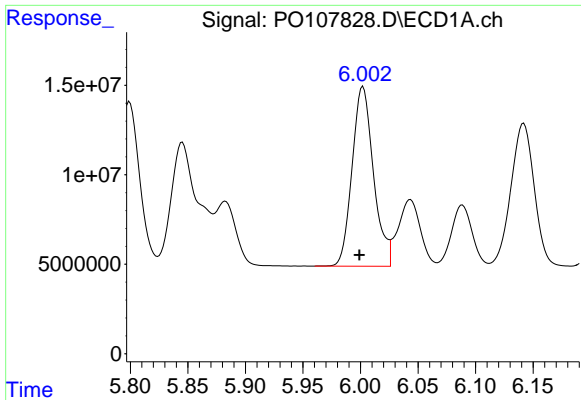
#6 AR-1016-4

R.T.: 5.706 min
 Delta R.T.: 0.002 min
 Response: 58618039
 Conc: 304.33 ng/ml



#6 AR-1016-4

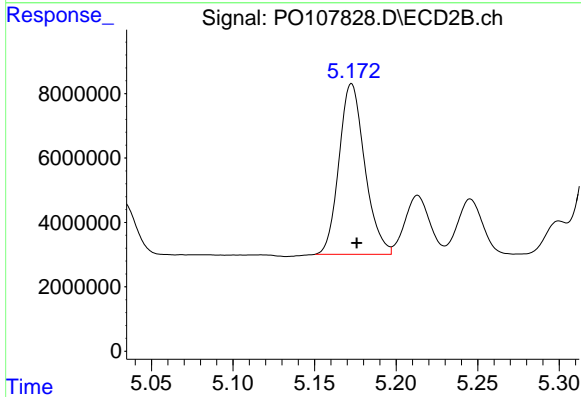
R.T.: 4.959 min
 Delta R.T.: -0.003 min
 Response: 46106212
 Conc: 697.43 ng/ml



#7 AR-1016-5

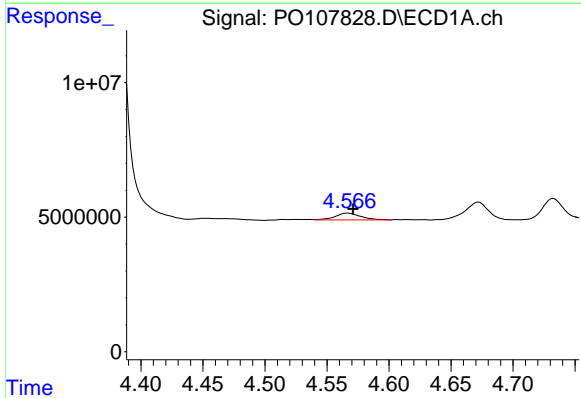
R.T.: 6.002 min
 Delta R.T.: 0.003 min
 Response: 130232754
 Conc: 713.00 ng/ml

Instrument :
 ECD_O
 ClientSampleId :
 AR1248CCC500



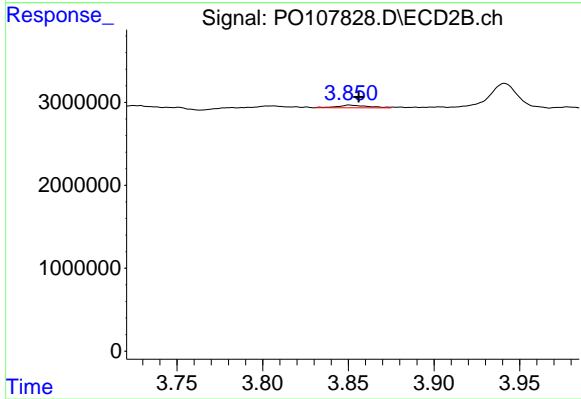
#7 AR-1016-5

R.T.: 5.173 min
 Delta R.T.: -0.003 min
 Response: 58175659
 Conc: 708.30 ng/ml



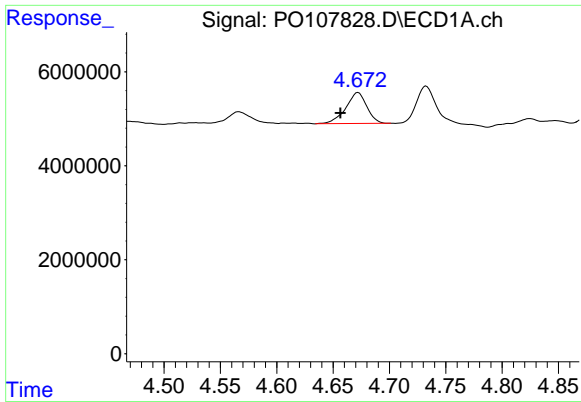
#8 AR-1221-1

R.T.: 4.566 min
 Delta R.T.: -0.005 min
 Response: 3605674
 Conc: 32.33 ng/ml



#8 AR-1221-1

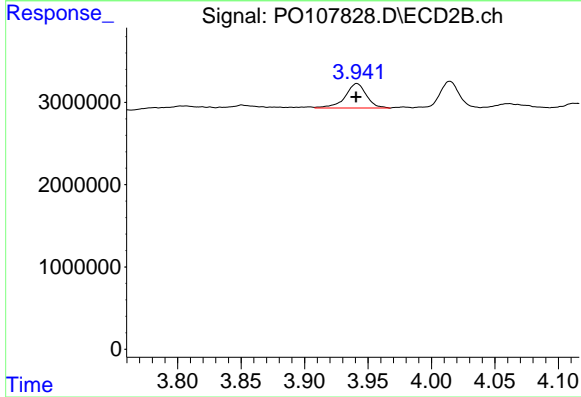
R.T.: 3.851 min
 Delta R.T.: -0.005 min
 Response: 408838
 Conc: 11.28 ng/ml



#9 AR-1221-2

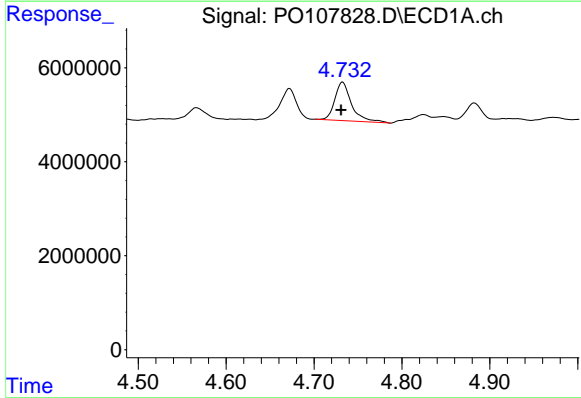
R.T.: 4.672 min
 Delta R.T.: 0.016 min
 Response: 8568704
 Conc: 104.60 ng/ml

Instrument :
 ECD_O
 ClientSampleId :
 AR1248CCC500



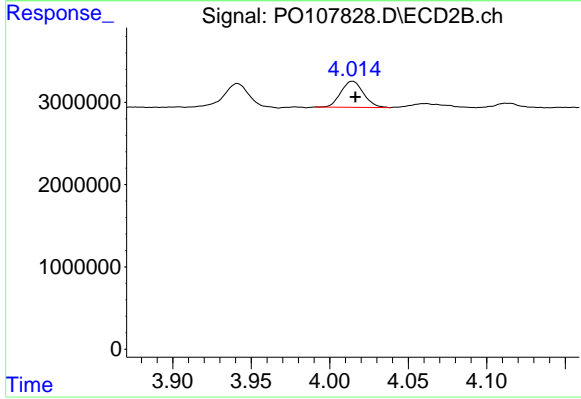
#9 AR-1221-2

R.T.: 3.941 min
 Delta R.T.: 0.000 min
 Response: 3451766
 Conc: 118.60 ng/ml



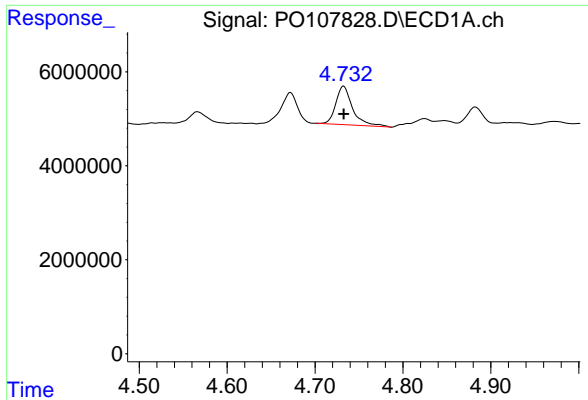
#10 AR-1221-3

R.T.: 4.733 min
 Delta R.T.: 0.002 min
 Response: 10932613
 Conc: 45.69 ng/ml



#10 AR-1221-3

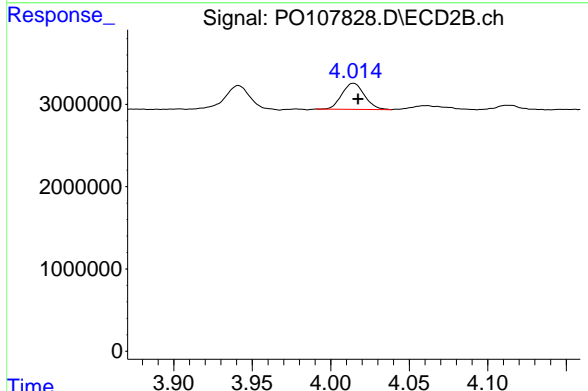
R.T.: 4.014 min
 Delta R.T.: -0.002 min
 Response: 3185666
 Conc: 36.10 ng/ml



#11 AR-1232-1

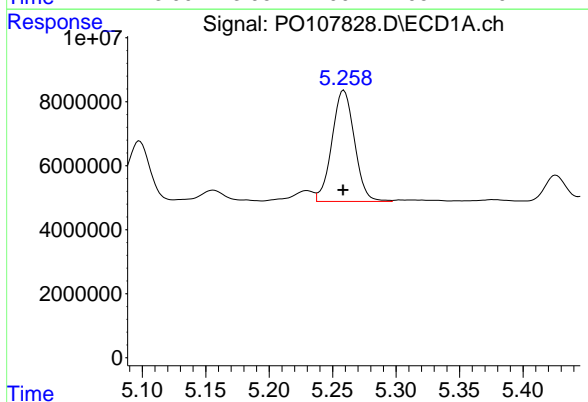
R.T.: 4.733 min
 Delta R.T.: 0.000 min
 Response: 10932613
 Conc: 55.82 ng/ml

Instrument :
 ECD_O
 ClientSampleId :
 AR1248CCC500



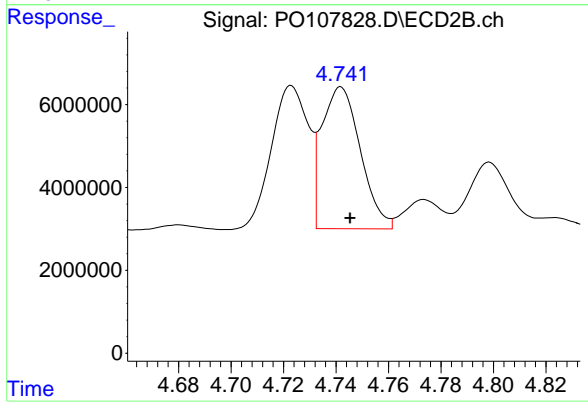
#11 AR-1232-1

R.T.: 4.014 min
 Delta R.T.: -0.003 min
 Response: 3185666
 Conc: 47.32 ng/ml



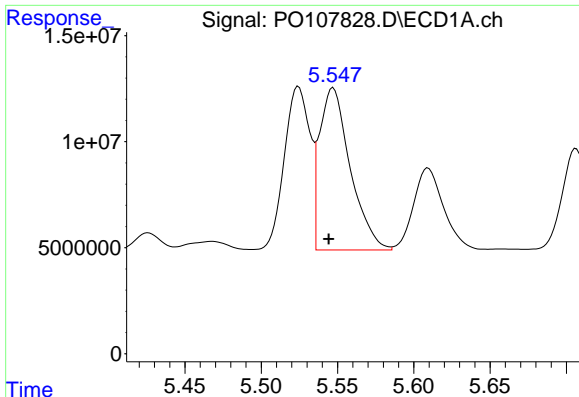
#12 AR-1232-2

R.T.: 5.259 min
 Delta R.T.: 0.000 min
 Response: 42838609
 Conc: 415.81 ng/ml



#12 AR-1232-2

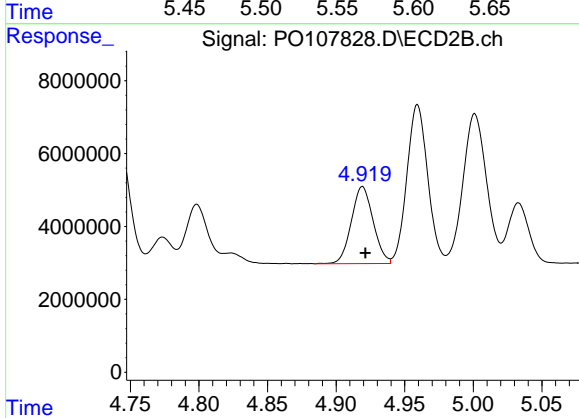
R.T.: 4.742 min
 Delta R.T.: -0.004 min
 Response: 34951597
 Conc: 552.99 ng/ml



#13 AR-1232-3

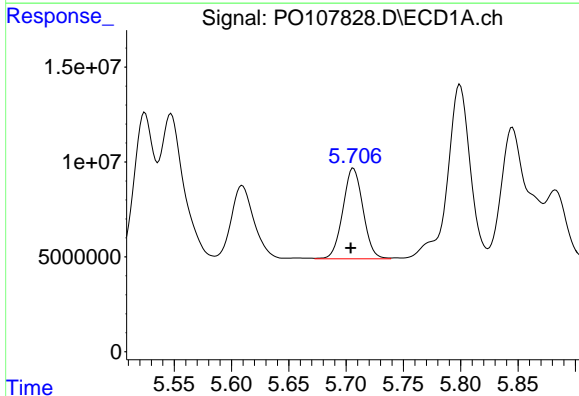
R.T.: 5.547 min
 Delta R.T.: 0.003 min
 Response: 107225035
 Conc: 599.02 ng/ml

Instrument :
 ECD_O
 ClientSampleId :
 AR1248CCC500



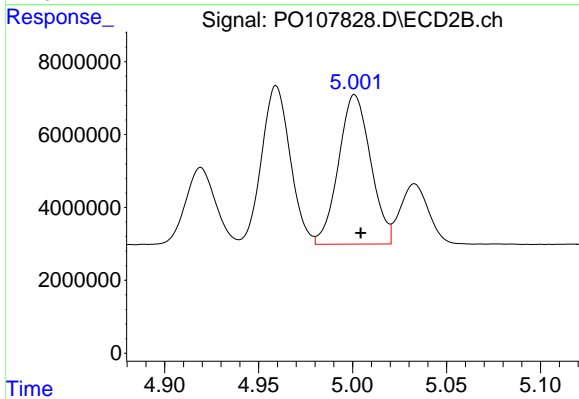
#13 AR-1232-3

R.T.: 4.919 min
 Delta R.T.: -0.002 min
 Response: 23412842
 Conc: 679.13 ng/ml



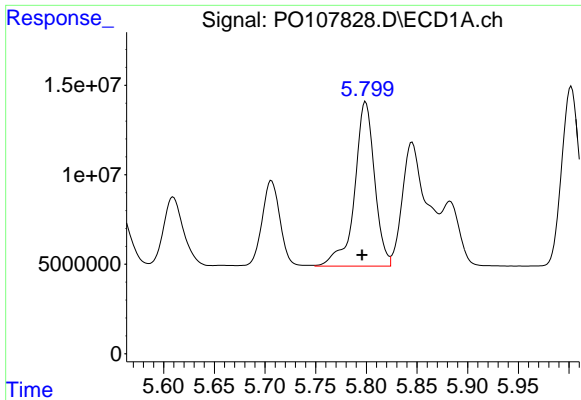
#14 AR-1232-4

R.T.: 5.706 min
 Delta R.T.: 0.002 min
 Response: 58618039
 Conc: 650.12 ng/ml



#14 AR-1232-4

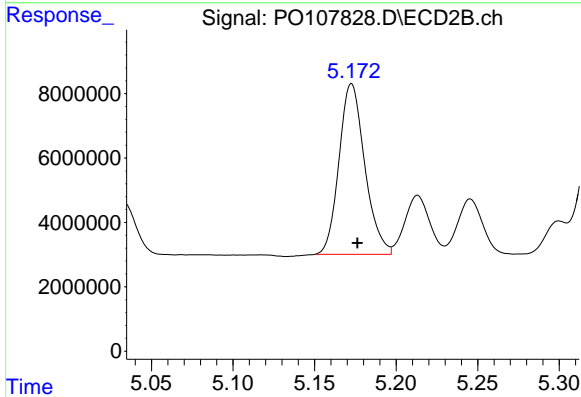
R.T.: 5.001 min
 Delta R.T.: -0.003 min
 Response: 48766194
 Conc: 1549.81 ng/ml



#15 AR-1232-5

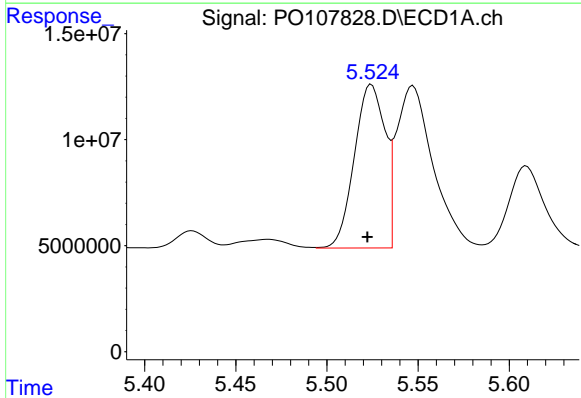
R.T.: 5.799 min
 Delta R.T.: 0.003 min
 Response: 126150095
 Conc: 1914.17 ng/ml

Instrument :
 ECD_O
 ClientSampleId :
 AR1248CCC500



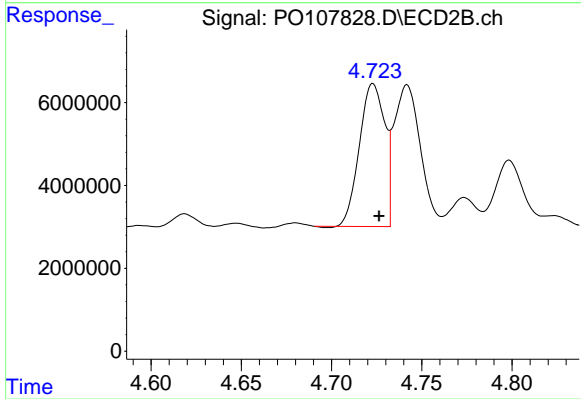
#15 AR-1232-5

R.T.: 5.173 min
 Delta R.T.: -0.004 min
 Response: 58175659
 Conc: 1758.46 ng/ml



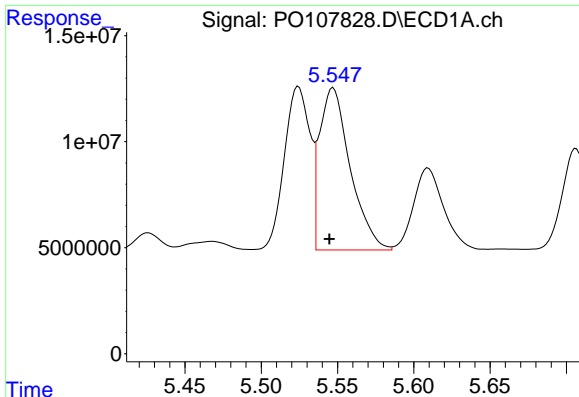
#16 AR-1242-1

R.T.: 5.524 min
 Delta R.T.: 0.002 min
 Response: 90171579
 Conc: 403.20 ng/ml



#16 AR-1242-1

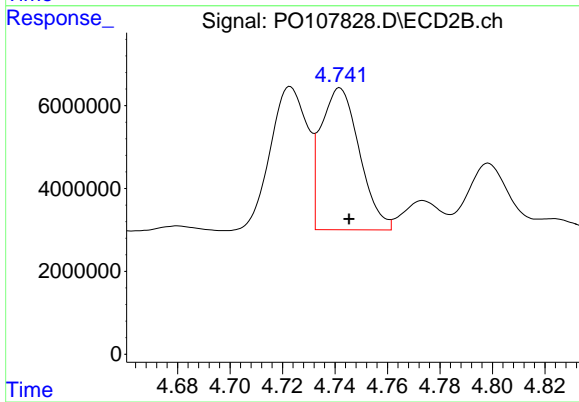
R.T.: 4.723 min
 Delta R.T.: -0.003 min
 Response: 33586793
 Conc: 401.07 ng/ml



#17 AR-1242-2

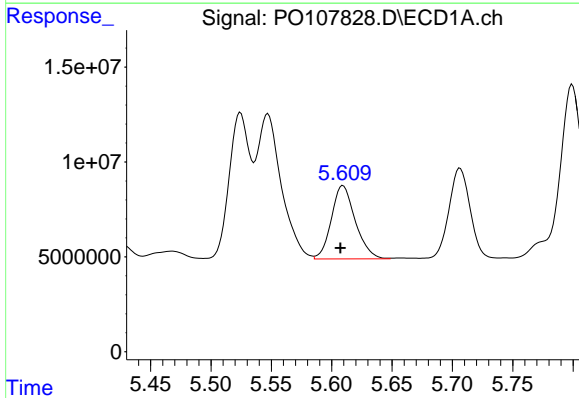
R.T.: 5.547 min
 Delta R.T.: 0.003 min
 Response: 107225035
 Conc: 331.43 ng/ml

Instrument :
 ECD_O
 ClientSampleId :
 AR1248CCC500



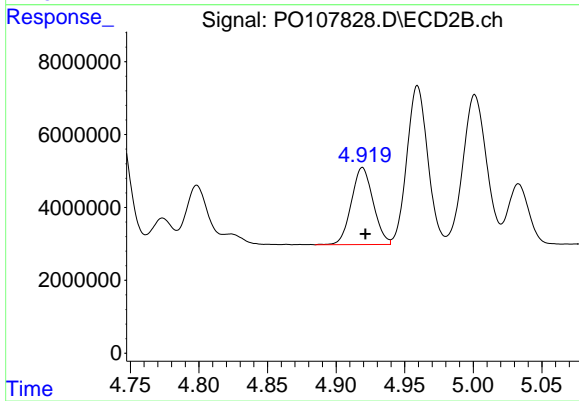
#17 AR-1242-2

R.T.: 4.742 min
 Delta R.T.: -0.003 min
 Response: 34951597
 Conc: 302.25 ng/ml



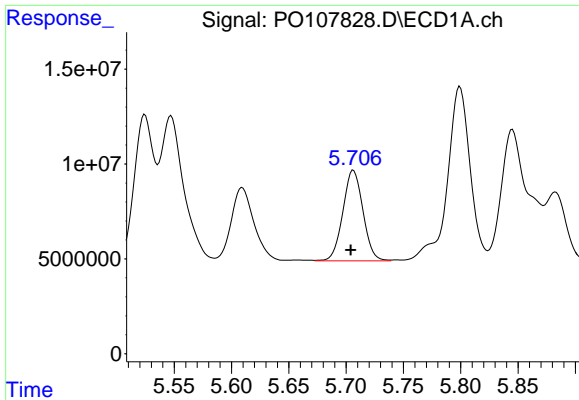
#18 AR-1242-3

R.T.: 5.609 min
 Delta R.T.: 0.002 min
 Response: 53344731
 Conc: 255.27 ng/ml



#18 AR-1242-3

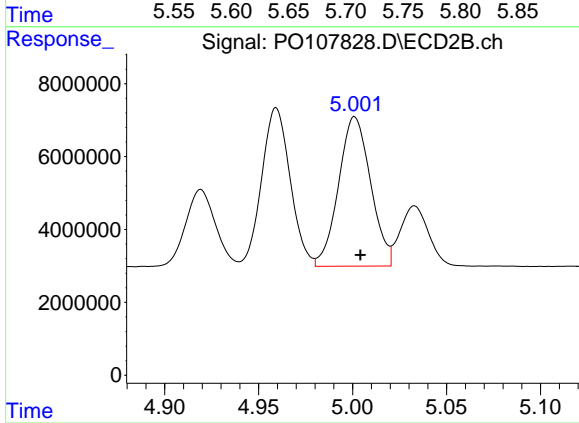
R.T.: 4.919 min
 Delta R.T.: -0.002 min
 Response: 23412842
 Conc: 369.09 ng/ml



#19 AR-1242-4

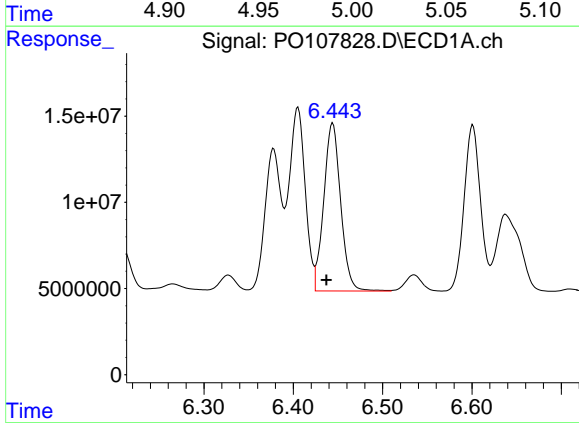
R.T.: 5.706 min
Delta R.T.: 0.002 min
Response: 58618039
Conc: 366.35 ng/ml

Instrument :
ECD_O
ClientSampleId :
AR1248CCC500



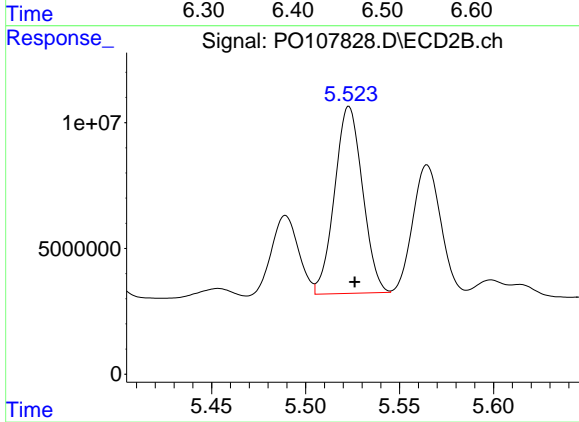
#19 AR-1242-4

R.T.: 5.001 min
Delta R.T.: -0.003 min
Response: 48766194
Conc: 761.38 ng/ml



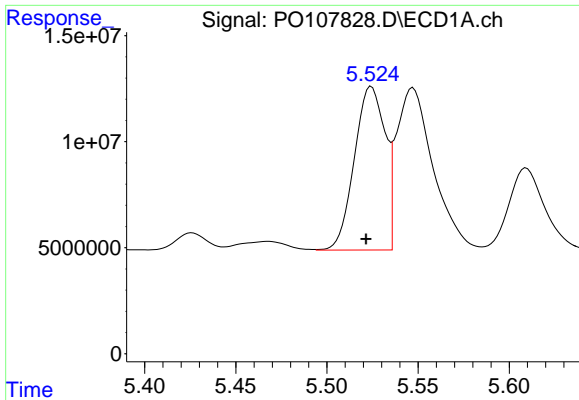
#20 AR-1242-5

R.T.: 6.444 min
Delta R.T.: 0.007 min
Response: 128425426
Conc: 820.70 ng/ml



#20 AR-1242-5

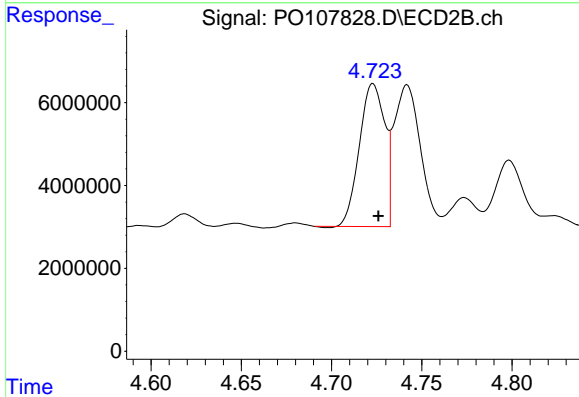
R.T.: 5.523 min
Delta R.T.: -0.003 min
Response: 76875221
Conc: 991.64 ng/ml



#21 AR-1248-1

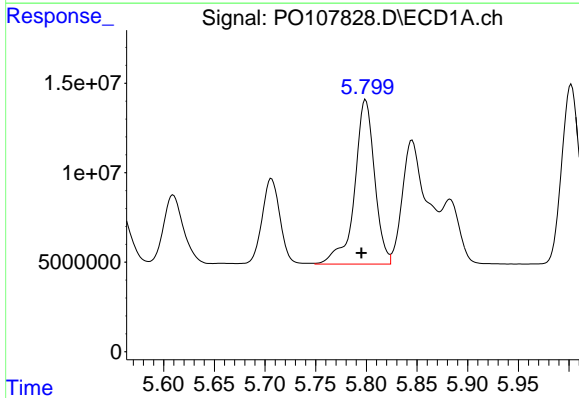
R.T.: 5.524 min
 Delta R.T.: 0.003 min
 Response: 90171579
 Conc: 518.60 ng/ml

Instrument :
 ECD_O
 ClientSampleId :
 AR1248CCC500



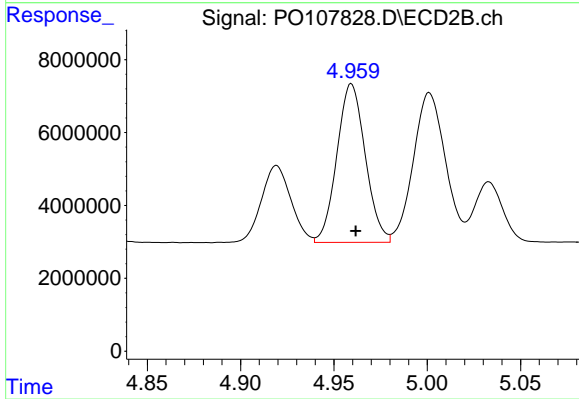
#21 AR-1248-1

R.T.: 4.723 min
 Delta R.T.: -0.003 min
 Response: 33586793
 Conc: 529.42 ng/ml



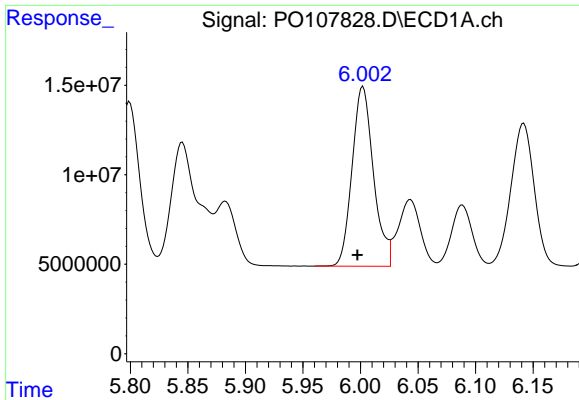
#22 AR-1248-2

R.T.: 5.799 min
 Delta R.T.: 0.004 min
 Response: 126150095
 Conc: 498.57 ng/ml



#22 AR-1248-2

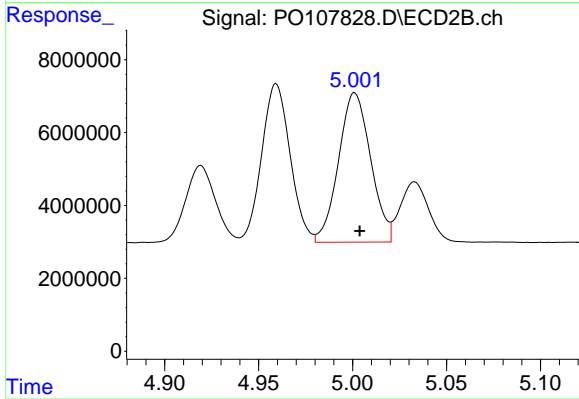
R.T.: 4.959 min
 Delta R.T.: -0.002 min
 Response: 46106212
 Conc: 503.98 ng/ml



#23 AR-1248-3

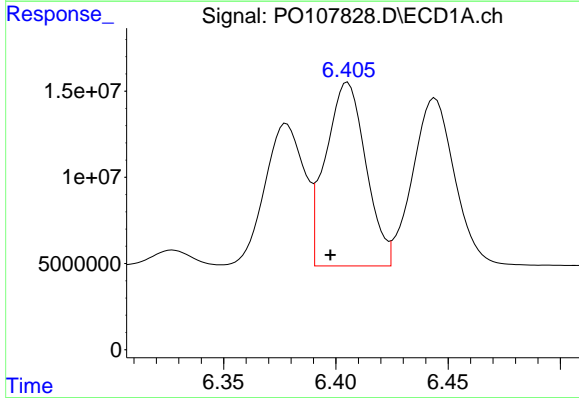
R.T.: 6.002 min
 Delta R.T.: 0.005 min
 Response: 130232754
 Conc: 509.35 ng/ml

Instrument :
 ECD_O
 ClientSampleId :
 AR1248CCC500



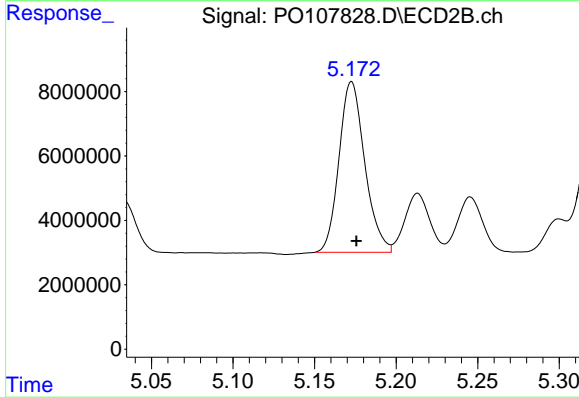
#23 AR-1248-3

R.T.: 5.001 min
 Delta R.T.: -0.003 min
 Response: 48766194
 Conc: 511.21 ng/ml



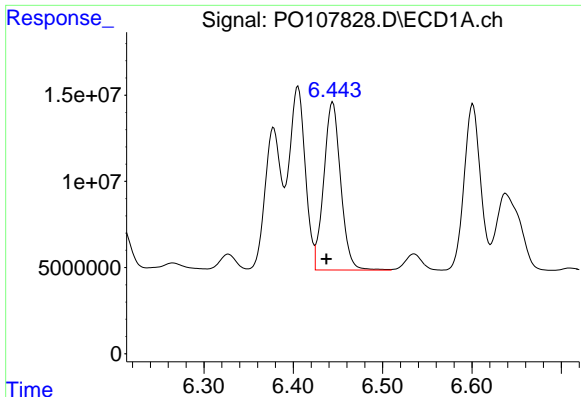
#24 AR-1248-4

R.T.: 6.405 min
 Delta R.T.: 0.008 min
 Response: 132707267
 Conc: 514.72 ng/ml



#24 AR-1248-4

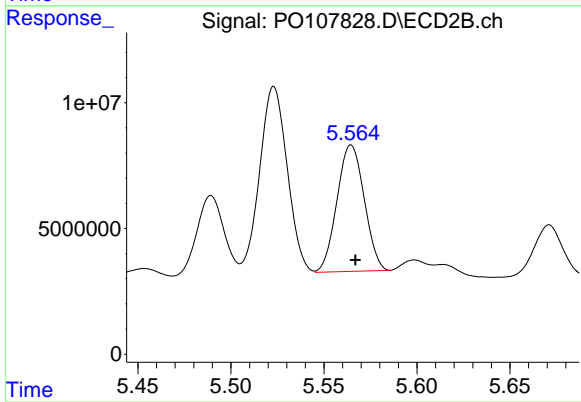
R.T.: 5.173 min
 Delta R.T.: -0.003 min
 Response: 58175659
 Conc: 518.78 ng/ml



#25 AR-1248-5

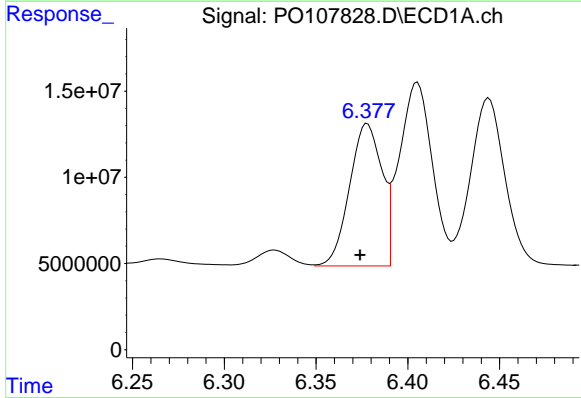
R.T.: 6.444 min
 Delta R.T.: 0.007 min
 Response: 128425426
 Conc: 493.86 ng/ml

Instrument :
 ECD_O
 ClientSampleId :
 AR1248CCC500



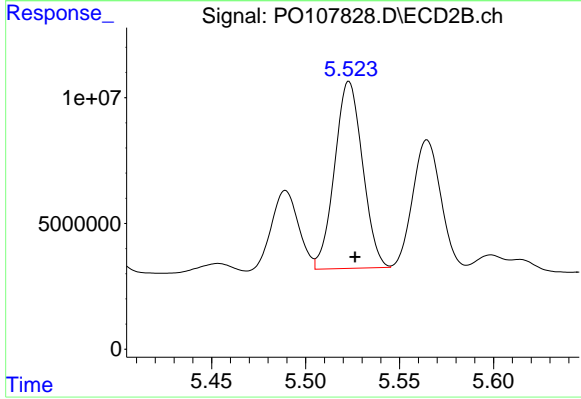
#25 AR-1248-5

R.T.: 5.565 min
 Delta R.T.: -0.002 min
 Response: 51178047
 Conc: 464.12 ng/ml



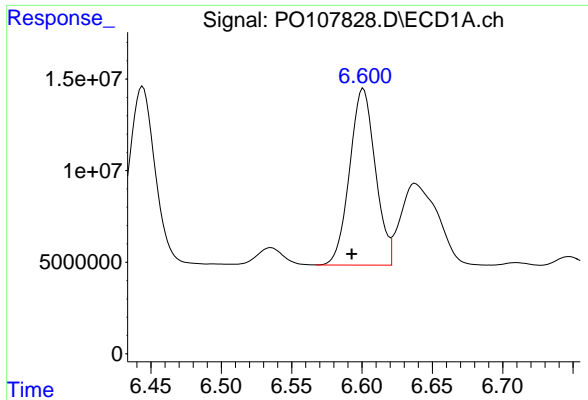
#26 AR-1254-1

R.T.: 6.378 min
 Delta R.T.: 0.004 min
 Response: 100932735
 Conc: 375.57 ng/ml



#26 AR-1254-1

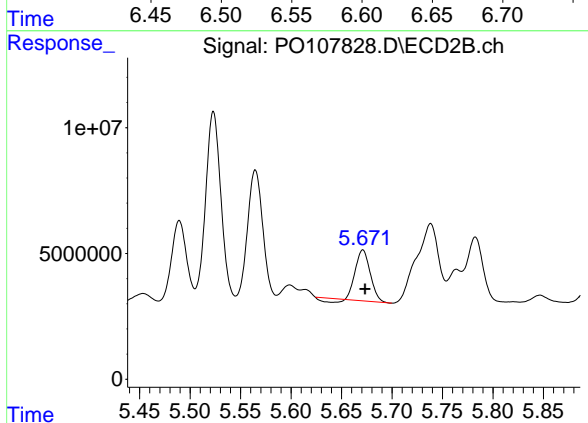
R.T.: 5.523 min
 Delta R.T.: -0.003 min
 Response: 76875221
 Conc: 466.51 ng/ml



#27 AR-1254-2

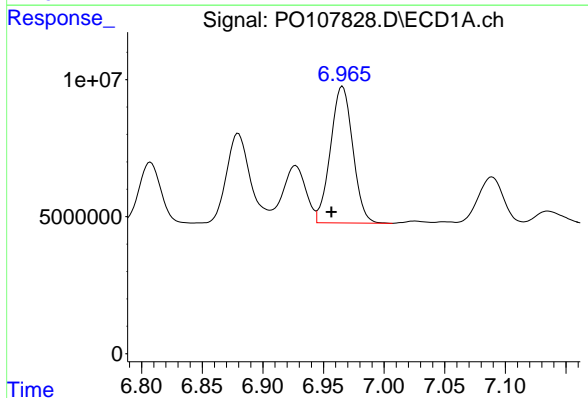
R.T.: 6.601 min
 Delta R.T.: 0.008 min
 Response: 122634057
 Conc: 324.94 ng/ml

Instrument :
 ECD_O
 ClientSampleId :
 AR1248CCC500



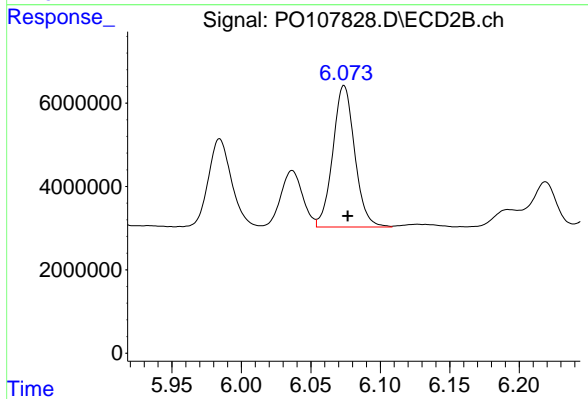
#27 AR-1254-2

R.T.: 5.671 min
 Delta R.T.: -0.002 min
 Response: 19701018
 Conc: 135.90 ng/ml



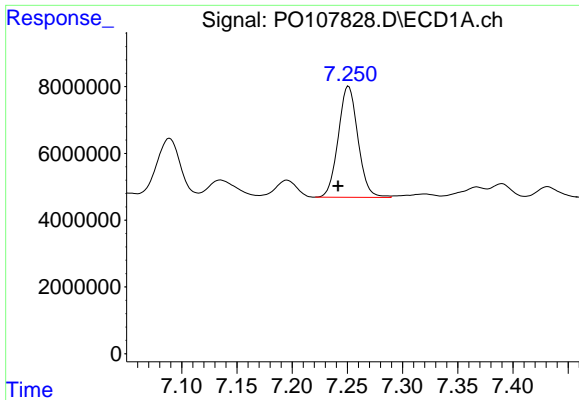
#28 AR-1254-3

R.T.: 6.966 min
 Delta R.T.: 0.009 min
 Response: 63814907
 Conc: 178.36 ng/ml



#28 AR-1254-3

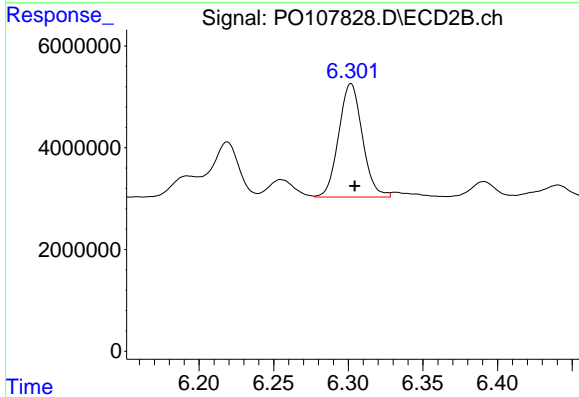
R.T.: 6.074 min
 Delta R.T.: -0.003 min
 Response: 37183111
 Conc: 161.93 ng/ml



#29 AR-1254-4

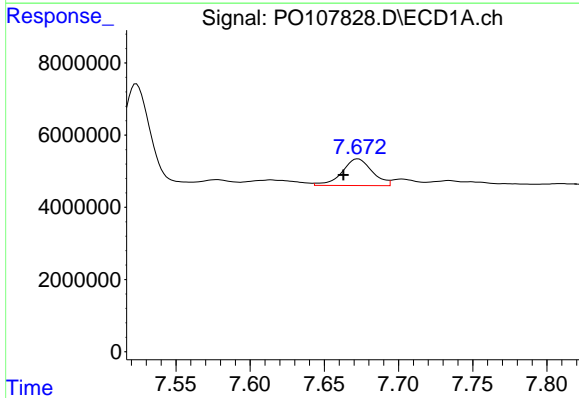
R.T.: 7.251 min
 Delta R.T.: 0.009 min
 Response: 41236161
 Conc: 179.74 ng/ml

Instrument :
 ECD_O
 ClientSampleId :
 AR1248CCC500



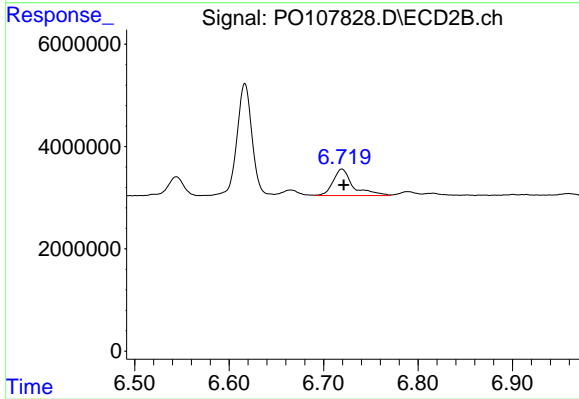
#29 AR-1254-4

R.T.: 6.302 min
 Delta R.T.: -0.003 min
 Response: 24701987
 Conc: 190.86 ng/ml



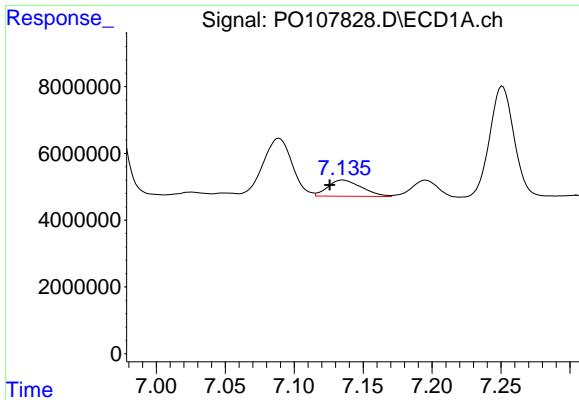
#30 AR-1254-5

R.T.: 7.673 min
 Delta R.T.: 0.010 min
 Response: 10445822
 Conc: 50.31 ng/ml



#30 AR-1254-5

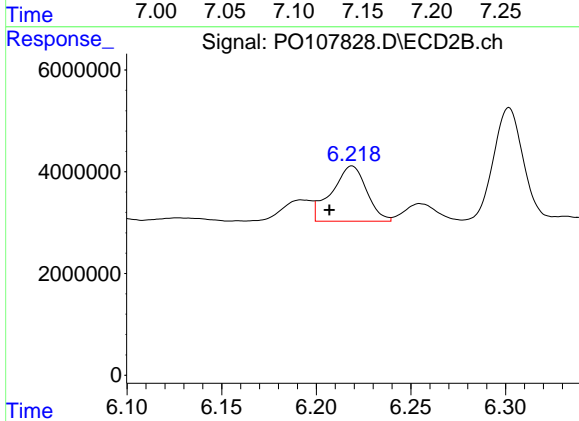
R.T.: 6.719 min
 Delta R.T.: -0.002 min
 Response: 7681143
 Conc: 40.20 ng/ml



#31 AR-1260-1

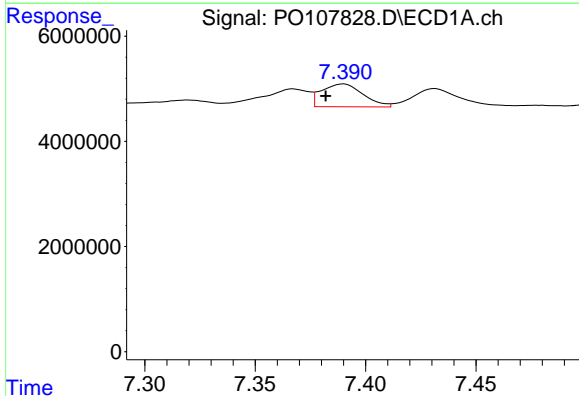
R.T.: 7.135 min
 Delta R.T.: 0.010 min
 Response: 8248811
 Conc: 31.90 ng/ml

Instrument :
 ECD_O
 ClientSampleId :
 AR1248CCC500



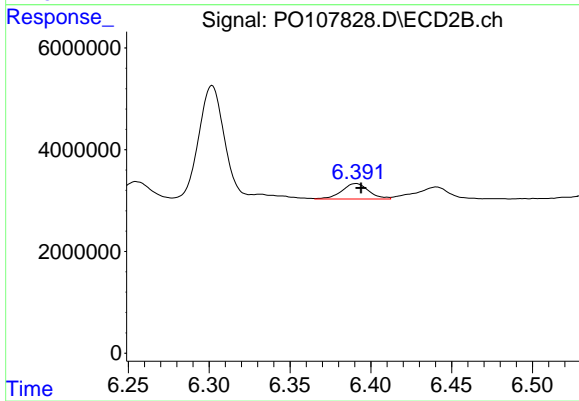
#31 AR-1260-1

R.T.: 6.219 min
 Delta R.T.: 0.012 min
 Response: 13927816
 Conc: 89.77 ng/ml



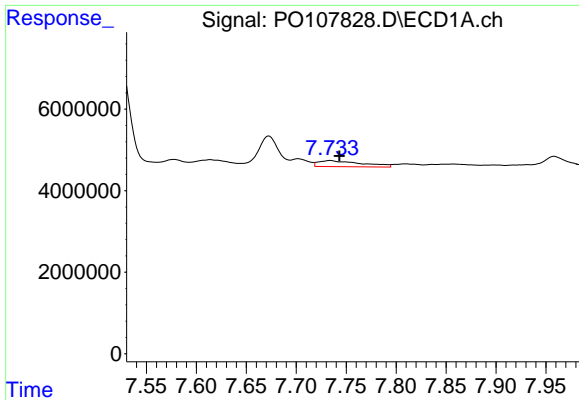
#32 AR-1260-2

R.T.: 7.390 min
 Delta R.T.: 0.008 min
 Response: 5670594
 Conc: 21.54 ng/ml



#32 AR-1260-2

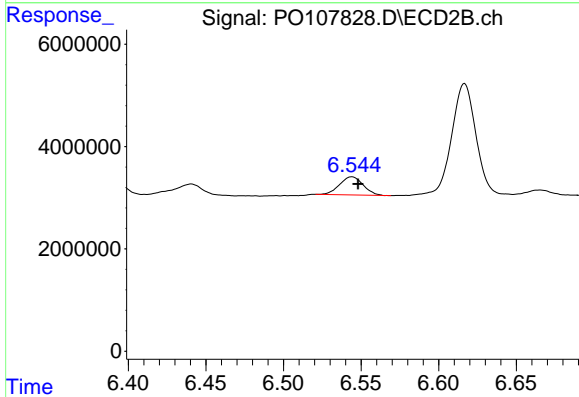
R.T.: 6.391 min
 Delta R.T.: -0.003 min
 Response: 3552283
 Conc: 20.17 ng/ml



#33 AR-1260-3

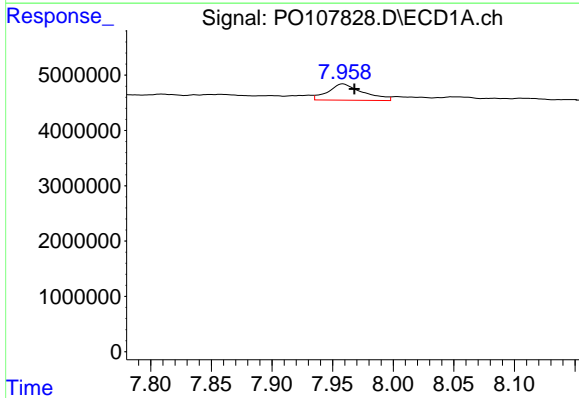
R.T.: 7.734 min
 Delta R.T.: -0.009 min
 Response: 4442174
 Conc: 24.71 ng/ml

Instrument :
 ECD_O
 ClientSampleId :
 AR1248CCC500



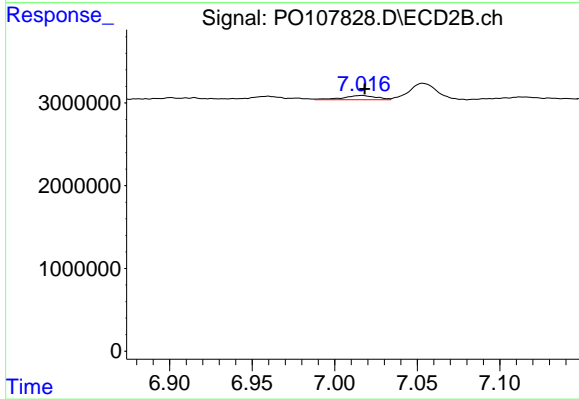
#33 AR-1260-3

R.T.: 6.544 min
 Delta R.T.: -0.004 min
 Response: 3759175
 Conc: 22.41 ng/ml



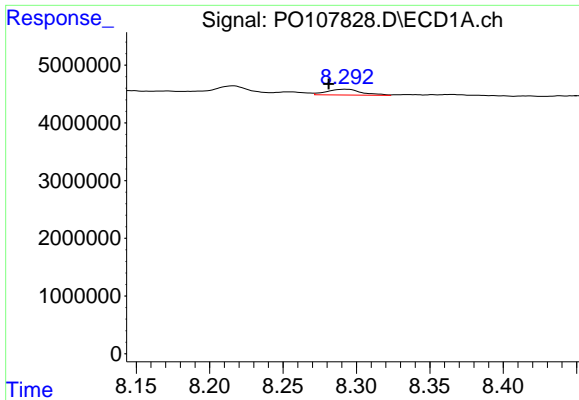
#34 AR-1260-4

R.T.: 7.959 min
 Delta R.T.: -0.009 min
 Response: 5886872
 Conc: 33.54 ng/ml



#34 AR-1260-4

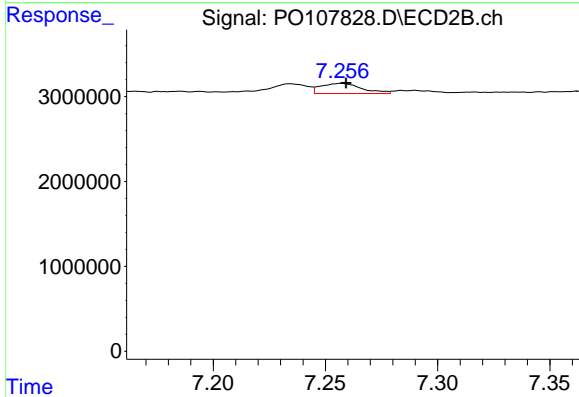
R.T.: 7.016 min
 Delta R.T.: -0.002 min
 Response: 726746
 Conc: 5.02 ng/ml



#35 AR-1260-5

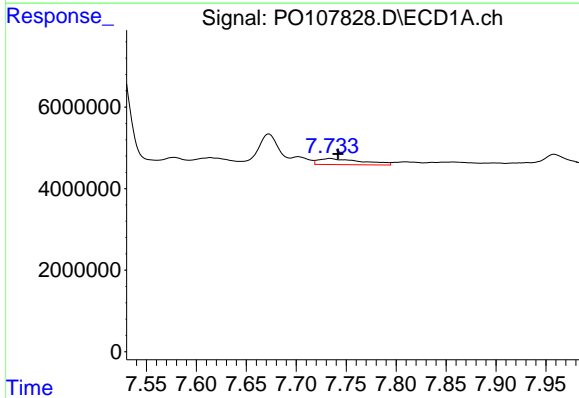
R.T.: 8.292 min
 Delta R.T.: 0.011 min
 Response: 1643104
 Conc: 5.78 ng/ml

Instrument :
 ECD_O
 ClientSampleId :
 AR1248CCC500



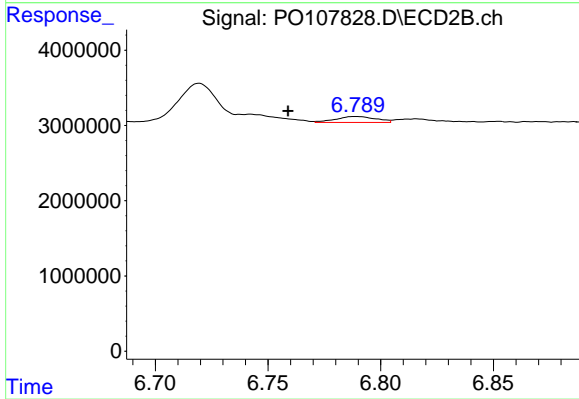
#35 AR-1260-5

R.T.: 7.257 min
 Delta R.T.: -0.002 min
 Response: 1517306
 Conc: 4.61 ng/ml



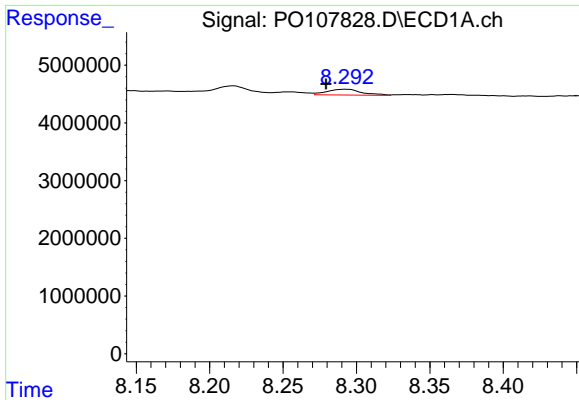
#36 AR-1262-1

R.T.: 7.734 min
 Delta R.T.: -0.008 min
 Response: 4442174
 Conc: 18.09 ng/ml



#36 AR-1262-1

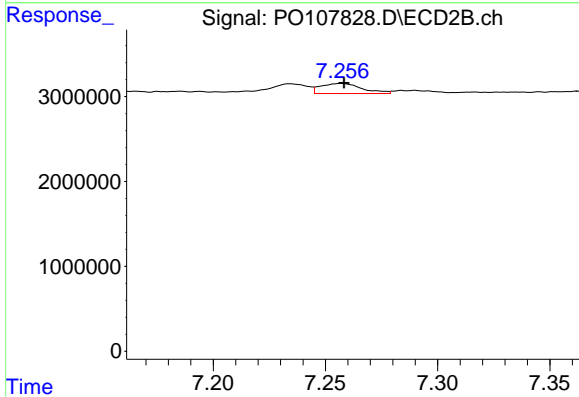
R.T.: 6.789 min
 Delta R.T.: 0.030 min
 Response: 968067
 Conc: 4.55 ng/ml



#37 AR-1262-2

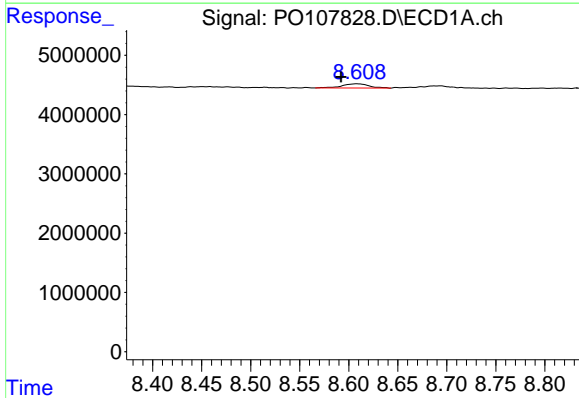
R.T.: 8.292 min
 Delta R.T.: 0.013 min
 Response: 1643104
 Conc: 5.31 ng/ml

Instrument :
 ECD_O
 ClientSampleId :
 AR1248CCC500



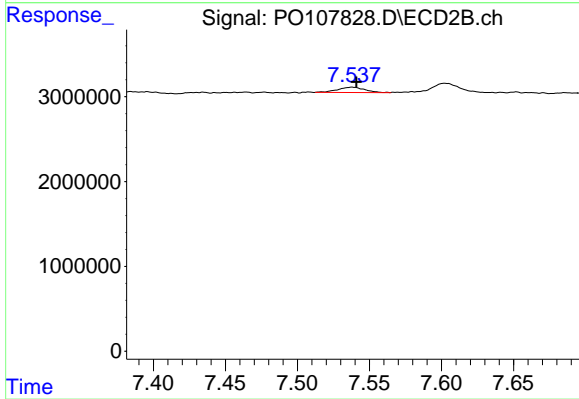
#37 AR-1262-2

R.T.: 7.257 min
 Delta R.T.: -0.001 min
 Response: 1517306
 Conc: 4.18 ng/ml



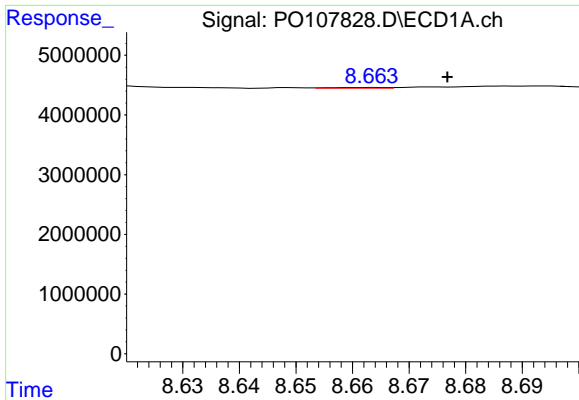
#38 AR-1262-3

R.T.: 8.609 min
 Delta R.T.: 0.016 min
 Response: 1384117
 Conc: 6.62 ng/ml



#38 AR-1262-3

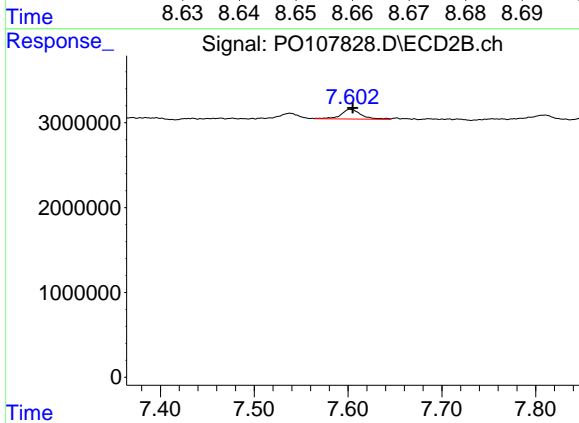
R.T.: 7.538 min
 Delta R.T.: -0.003 min
 Response: 841886
 Conc: 6.13 ng/ml



#39 AR-1262-4

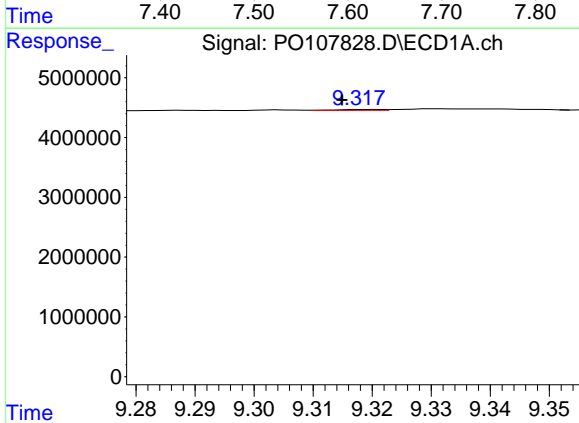
R.T.: 8.664 min
 Delta R.T.: -0.013 min
 Response: 87142
 Conc: 0.53 ng/ml

Instrument :
 ECD_O
 ClientSampleId :
 AR1248CCC500



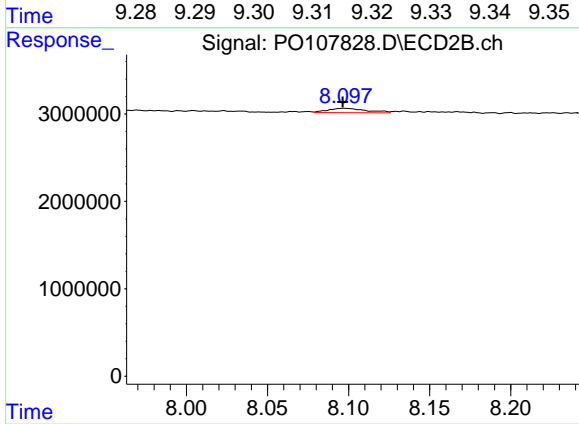
#39 AR-1262-4

R.T.: 7.603 min
 Delta R.T.: -0.003 min
 Response: 1723275
 Conc: 6.51 ng/ml



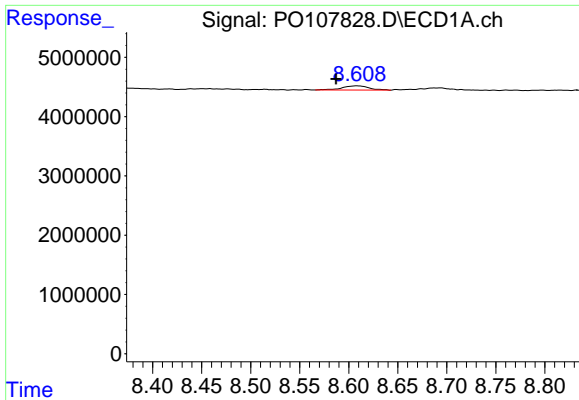
#40 AR-1262-5

R.T.: 9.319 min
 Delta R.T.: 0.004 min
 Response: 87659
 Conc: 0.85 ng/ml



#40 AR-1262-5

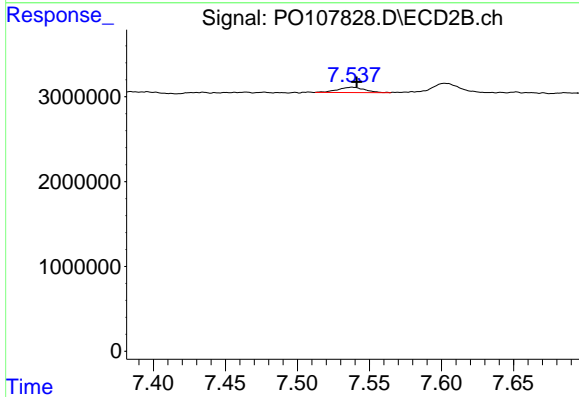
R.T.: 8.097 min
 Delta R.T.: 0.000 min
 Response: 845961
 Conc: 7.50 ng/ml



#41 AR-1268-1

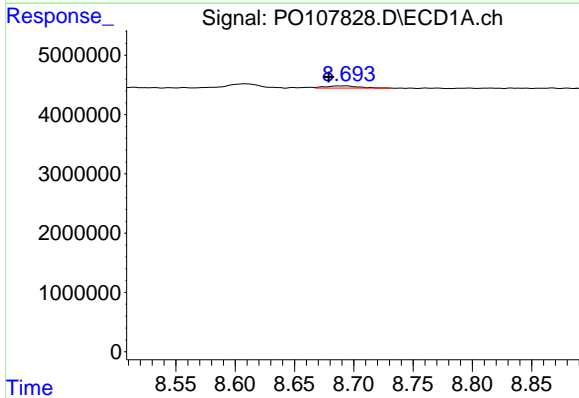
R.T.: 8.609 min
 Delta R.T.: 0.022 min
 Response: 1384117
 Conc: 3.80 ng/ml

Instrument :
 ECD_O
 ClientSampleId :
 AR1248CCC500



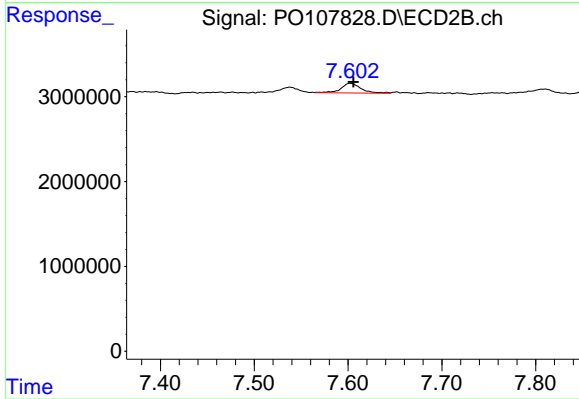
#41 AR-1268-1

R.T.: 7.538 min
 Delta R.T.: -0.003 min
 Response: 841886
 Conc: 2.08 ng/ml



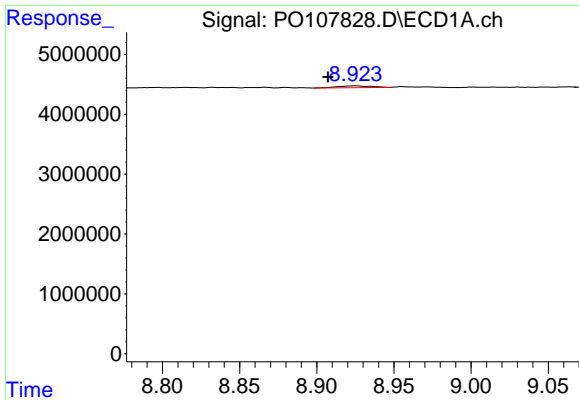
#42 AR-1268-2

R.T.: 8.694 min
 Delta R.T.: 0.015 min
 Response: 704886
 Conc: 2.19 ng/ml



#42 AR-1268-2

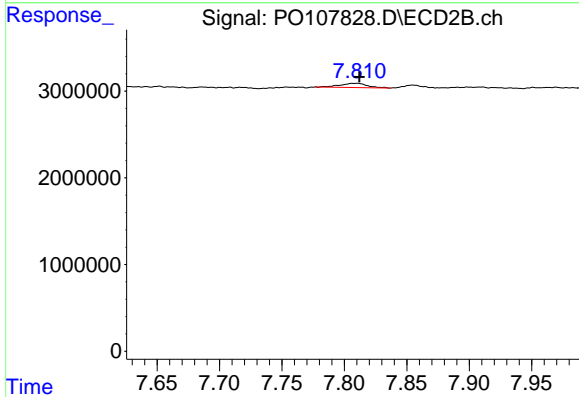
R.T.: 7.603 min
 Delta R.T.: -0.003 min
 Response: 1723275
 Conc: 4.62 ng/ml



#43 AR-1268-3

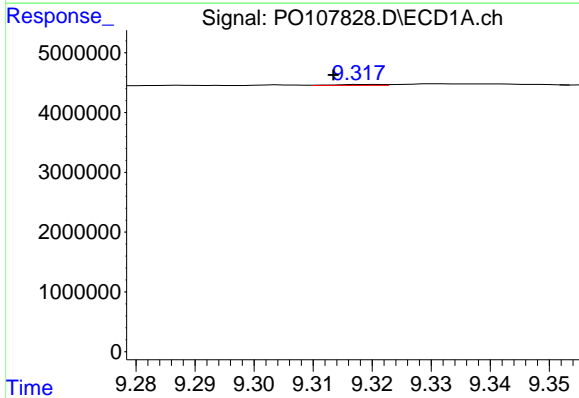
R.T.: 8.925 min
 Delta R.T.: 0.017 min
 Response: 453039
 Conc: 1.62 ng/ml

Instrument :
 ECD_O
 ClientSampleId :
 AR1248CCC500



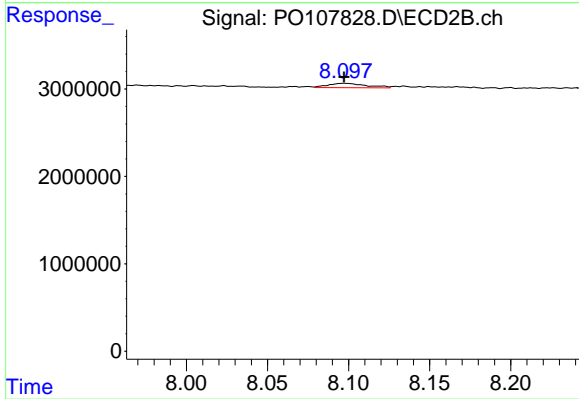
#43 AR-1268-3

R.T.: 7.810 min
 Delta R.T.: -0.002 min
 Response: 750278
 Conc: 2.25 ng/ml



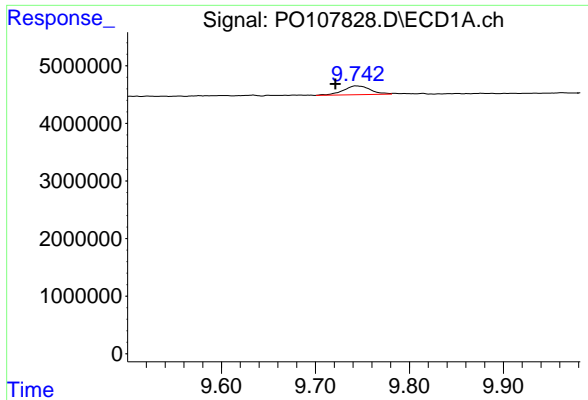
#44 AR-1268-4

R.T.: 9.319 min
 Delta R.T.: 0.006 min
 Response: 87659
 Conc: 0.79 ng/ml



#44 AR-1268-4

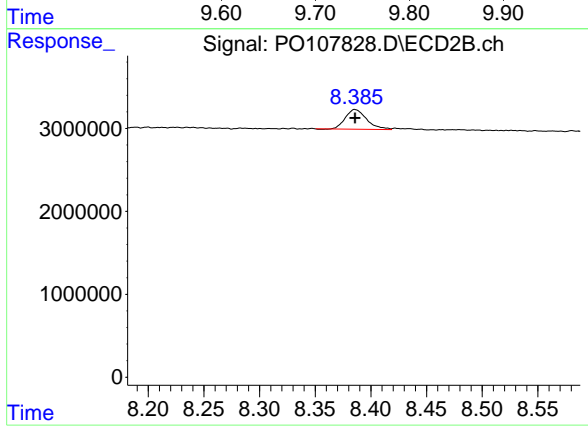
R.T.: 8.097 min
 Delta R.T.: 0.000 min
 Response: 845961
 Conc: 6.75 ng/ml



#45 AR-1268-5

R.T.: 9.743 min
 Delta R.T.: 0.022 min
 Response: 3058753
 Conc: 3.67 ng/ml

Instrument :
 ECD_O
 ClientSampleId :
 AR1248CCC500



#45 AR-1268-5

R.T.: 8.386 min
 Delta R.T.: 0.000 min
 Response: 3174128
 Conc: 3.21 ng/ml