

Data Path : Z:\pestpcbsrv\HPCHEM1\ECD\_0\Data\P0110918\  
 Data File : P0051266.D  
 Signal(s) : Signal #1: ECD1A.CH Signal #2: ECD2B.CH  
 Acq On : 08 Nov 2018 14:23  
 Operator : SM/SJ  
 Sample : P0110918ICV500  
 Misc :  
 ALS Vial : 15 Sample Multiplier: 1

Instrument :  
 ECD\_0  
 ClientSampleId :  
 ICVPO110918

Integration File signal 1: autoint1.e  
 Integration File signal 2: autoint2.e  
 Quant Time: Nov 08 14:54:07 2018  
 Quant Method : Z:\pestpcbsrv\HPCHEM1\ECD\_0\methods\P0110918.M  
 Quant Title : GC EXTRACTABLES  
 QLast Update : Thu Nov 08 14:50:13 2018  
 Response via : Initial Calibration  
 Integrator: ChemStation 6890 Scale Mode: Small noise peaks clipped

Volume Inj. : 2 µl  
 Signal #1 Phase : ZB-MR1 Signal #2 Phase: ZB-MR2  
 Signal #1 Info : 30Mx0.32mmx 0.50µ Signal #2 Info : 30M x 0.32mm x 0.25µm

Compound	RT#1	RT#2	Resp#1	Resp#2	ng/ml	ng/ml
-----						
System Monitoring Compounds						
1) SA Tetrachlo...	4.337	3.336	29195773	11482125	51.787	51.457
2) SA Decachlor...	9.974	8.070	19075331	12215714	51.407	55.114
Target Compounds						
3) L1 AR-1016-1	5.499	4.349	8727731	3611921	529.745	496.512
4) L1 AR-1016-2	5.521	4.365	13021787	6454060	525.653	515.946
5) L1 AR-1016-3	5.583	4.529	7814772	3213322	511.640	528.114
6) L1 AR-1016-4	5.681	4.572	6383816	2627982	517.314	525.466
7) L1 AR-1016-5	5.973	4.771	6200651	3398266	557.656	524.291
31) L7 AR-1260-1	7.092	5.751	11441609	7360179	513.300	515.615
32) L7 AR-1260-2	7.348	5.935	14575000	9690417	507.745	511.704
33) L7 AR-1260-3	7.705	6.078	9861791	8527418	504.464	518.648
34) L7 AR-1260-4	7.930	6.534	9736275	5923588	518.327	544.501
35) L7 AR-1260-5	8.242	6.773	19514796	15654673	516.246	537.187
-----						

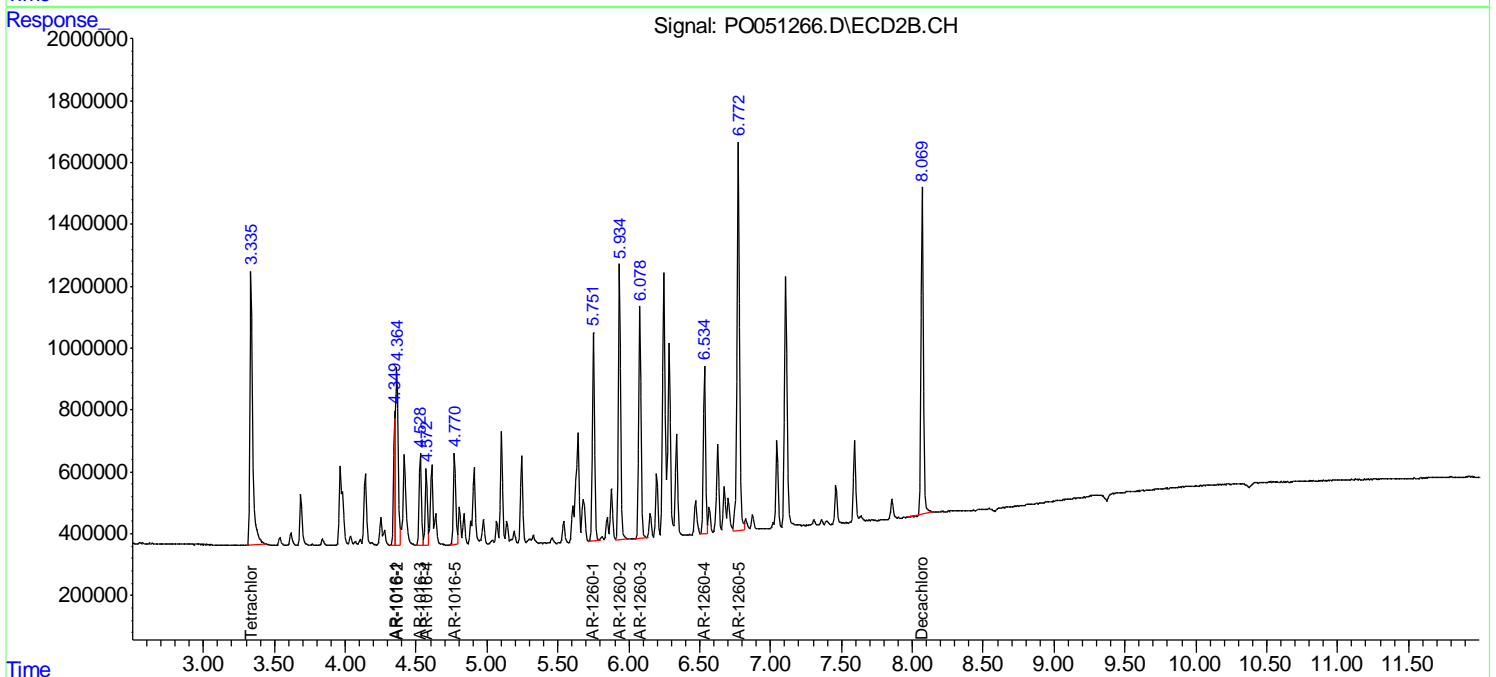
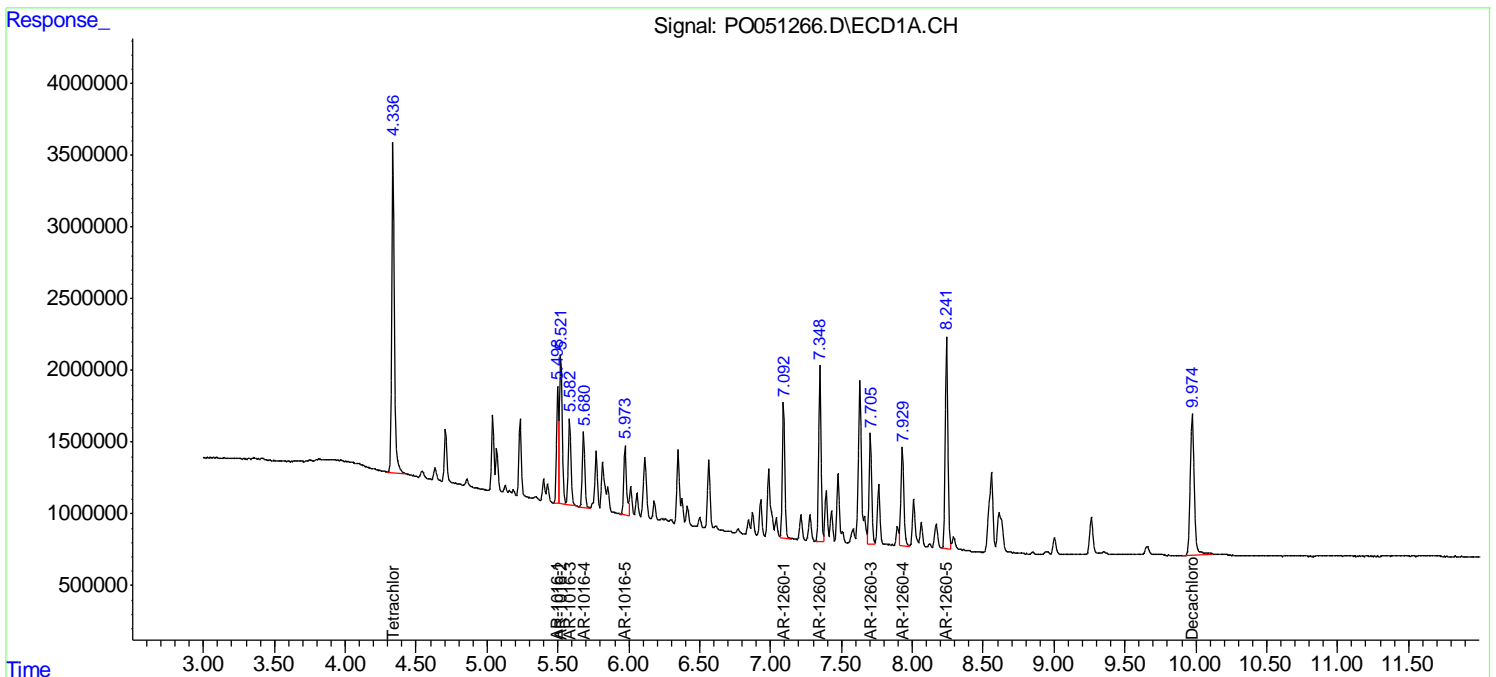
(f)=RT Delta > 1/2 Window (#)=Amounts differ by > 25% (m)=manual int.

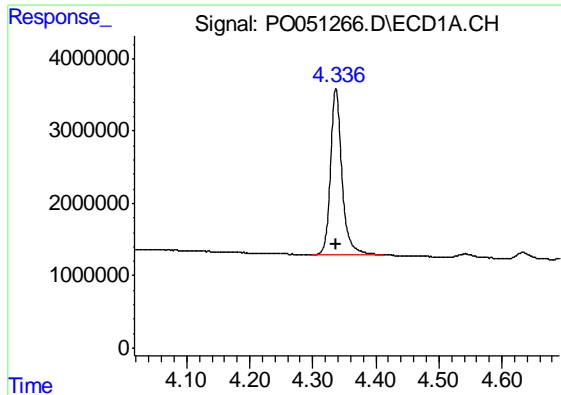
Data Path : Z:\pestpcbsrv\HPCHEM1\ECD\_O\Data\PO110918\  
 Data File : PO051266.D  
 Signal(s) : Signal #1: ECD1A.CH Signal #2: ECD2B.CH  
 Acq On : 08 Nov 2018 14:23  
 Operator : SM/SJ  
 Sample : PO110918ICV500  
 Misc :  
 ALS Vial : 15 Sample Multiplier: 1

Instrument :  
 ECD\_O  
 ClientSampled :  
 ICVPO110918

Integration File signal 1: autoint1.e  
 Integration File signal 2: autoint2.e  
 Quant Time: Nov 08 14:54:07 2018  
 Quant Method : Z:\pestpcbsrv\HPCHEM1\ECD\_O\methods\PO110918.M  
 Quant Title : GC EXTRACTABLES  
 QLast Update : Thu Nov 08 14:50:13 2018  
 Response via : Initial Calibration  
 Integrator: ChemStation 6890 Scale Mode: Small noise peaks clipped

Volume Inj. : 2 µl  
 Signal #1 Phase : ZB-MR1 Signal #2 Phase: ZB-MR2  
 Signal #1 Info : 30Mx0.32mmx 0.50µ Signal #2 Info : 30M x 0.32mm x 0.25µm

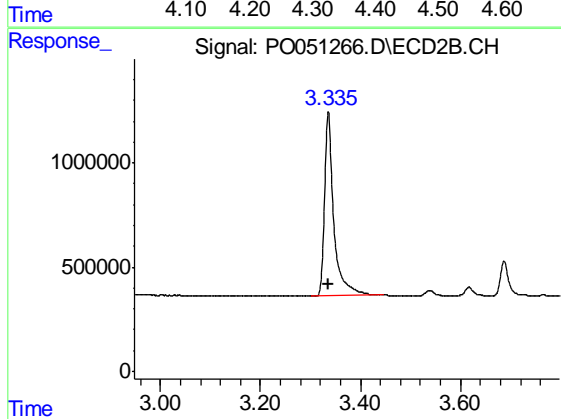




#1 Tetrachloro-m-xylene

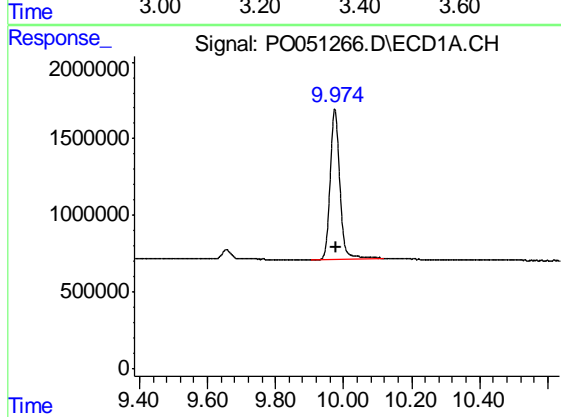
R.T.: 4.337 min  
 Delta R.T.: -0.001 min  
 Response: 29195773  
 Conc: 51.79 ng/ml

Instrument :  
 ECD\_O  
 ClientSampleId :  
 ICVPO110918



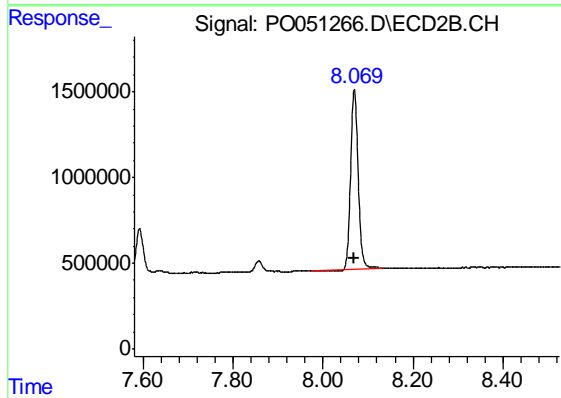
#1 Tetrachloro-m-xylene

R.T.: 3.336 min  
 Delta R.T.: 0.000 min  
 Response: 11482125  
 Conc: 51.46 ng/ml



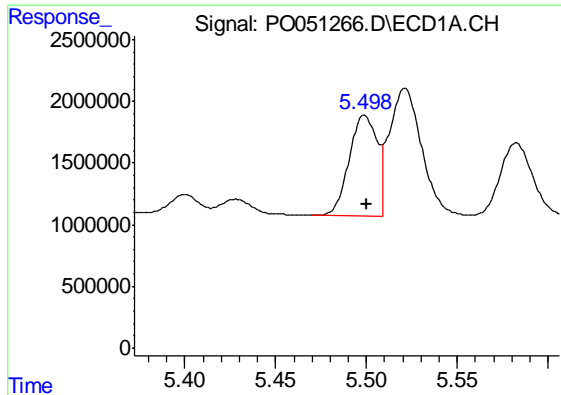
#2 Decachlorobiphenyl

R.T.: 9.974 min  
 Delta R.T.: -0.003 min  
 Response: 19075331  
 Conc: 51.41 ng/ml



#2 Decachlorobiphenyl

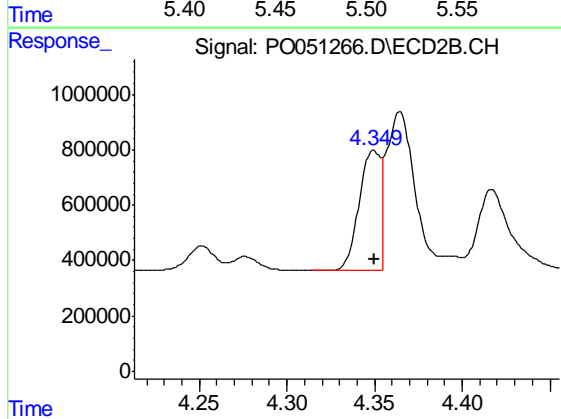
R.T.: 8.070 min  
 Delta R.T.: 0.000 min  
 Response: 12215714  
 Conc: 55.11 ng/ml



#3 AR-1016-1

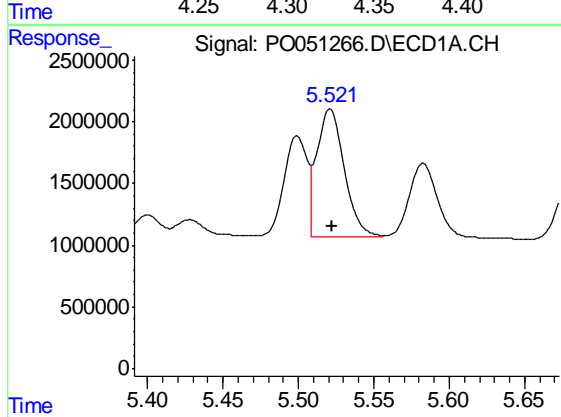
R.T.: 5.499 min  
 Delta R.T.: -0.001 min  
 Response: 8727731  
 Conc: 529.74 ng/ml

Instrument :  
 ECD\_O  
 ClientSampleId :  
 ICVPO110918



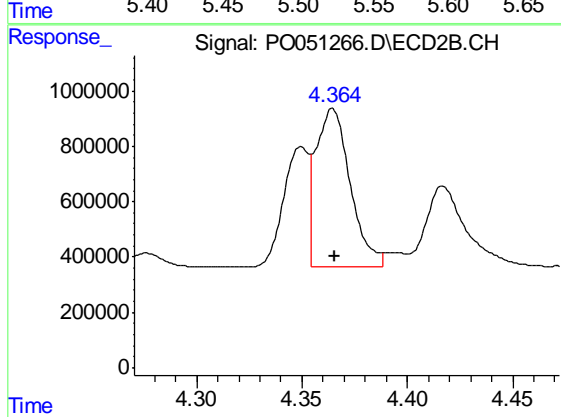
#3 AR-1016-1

R.T.: 4.349 min  
 Delta R.T.: 0.000 min  
 Response: 3611921  
 Conc: 496.51 ng/ml



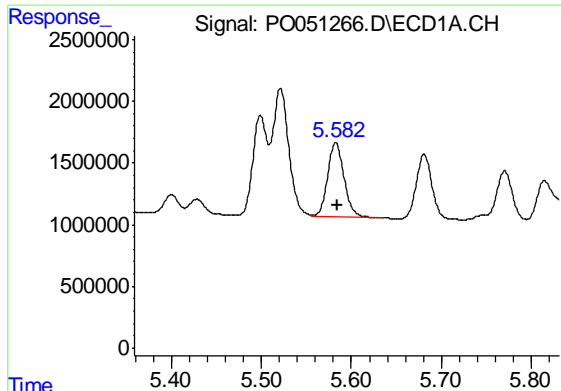
#4 AR-1016-2

R.T.: 5.521 min  
 Delta R.T.: -0.001 min  
 Response: 13021787  
 Conc: 525.65 ng/ml



#4 AR-1016-2

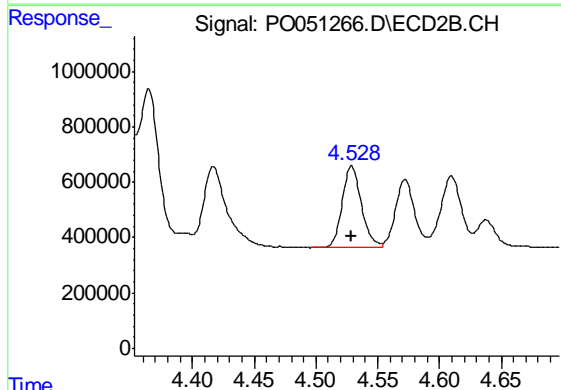
R.T.: 4.365 min  
 Delta R.T.: 0.000 min  
 Response: 6454060  
 Conc: 515.95 ng/ml



#5 AR-1016-3

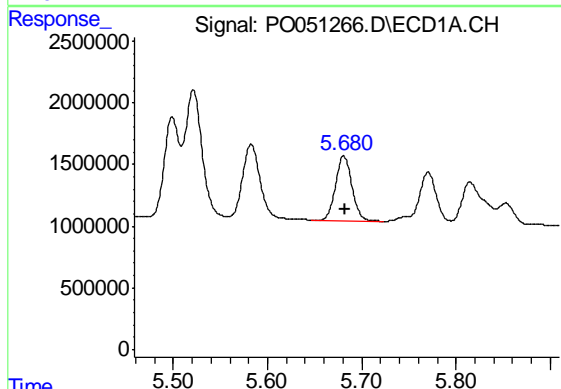
R.T.: 5.583 min  
Delta R.T.: -0.001 min  
Response: 7814772  
Conc: 511.64 ng/ml

Instrument :  
ECD\_O  
ClientSampleId :  
ICVPO110918



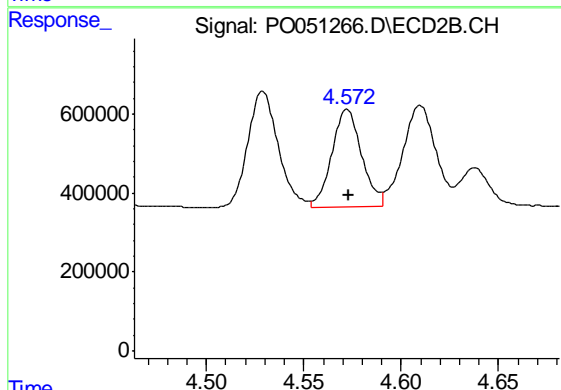
#5 AR-1016-3

R.T.: 4.529 min  
Delta R.T.: 0.000 min  
Response: 3213322  
Conc: 528.11 ng/ml



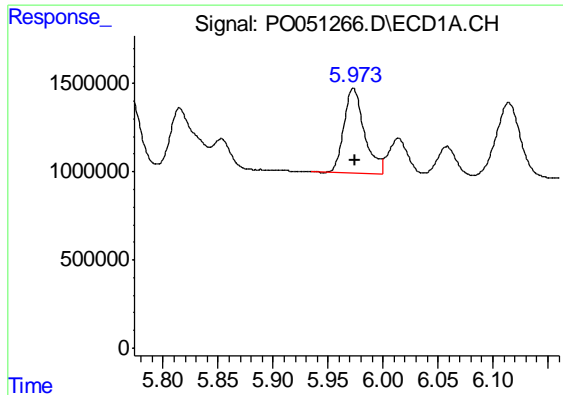
#6 AR-1016-4

R.T.: 5.681 min  
Delta R.T.: -0.002 min  
Response: 6383816  
Conc: 517.31 ng/ml



#6 AR-1016-4

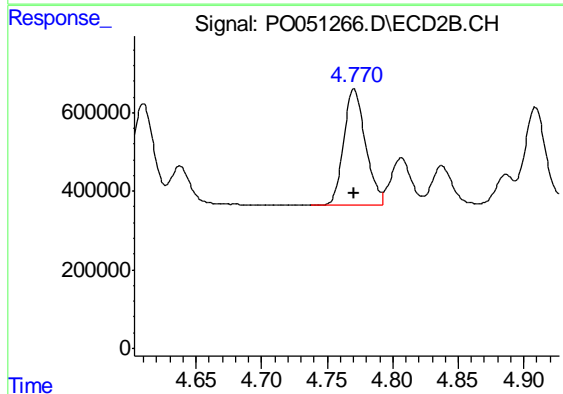
R.T.: 4.572 min  
Delta R.T.: 0.000 min  
Response: 2627982  
Conc: 525.47 ng/ml



#7 AR-1016-5

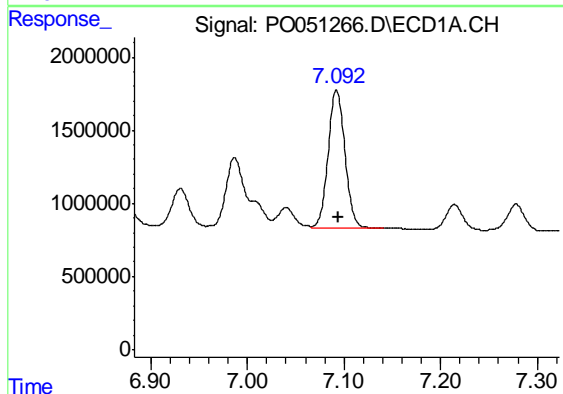
R.T.: 5.973 min  
 Delta R.T.: -0.001 min  
 Response: 6200651  
 Conc: 557.66 ng/ml

Instrument :  
 ECD\_O  
 ClientSampleId :  
 ICVPO110918



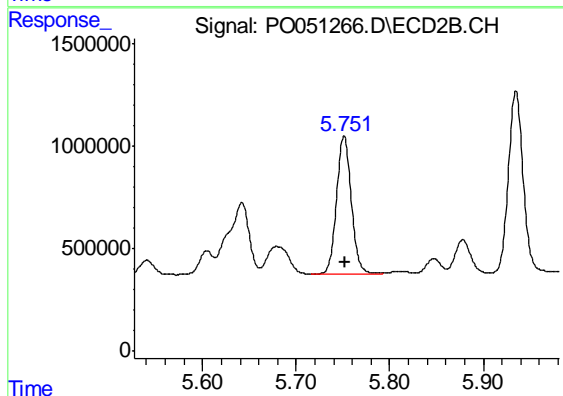
#7 AR-1016-5

R.T.: 4.771 min  
 Delta R.T.: 0.000 min  
 Response: 3398266  
 Conc: 524.29 ng/ml



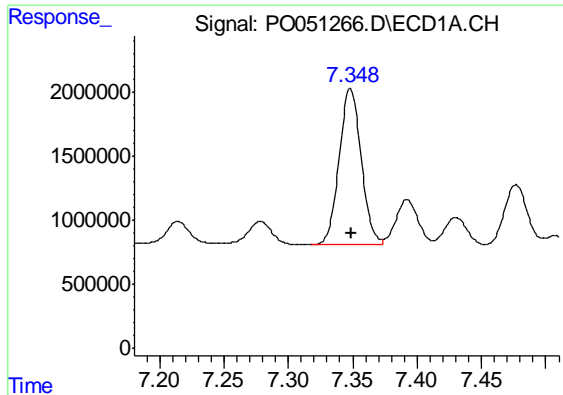
#31 AR-1260-1

R.T.: 7.092 min  
 Delta R.T.: -0.002 min  
 Response: 11441609  
 Conc: 513.30 ng/ml



#31 AR-1260-1

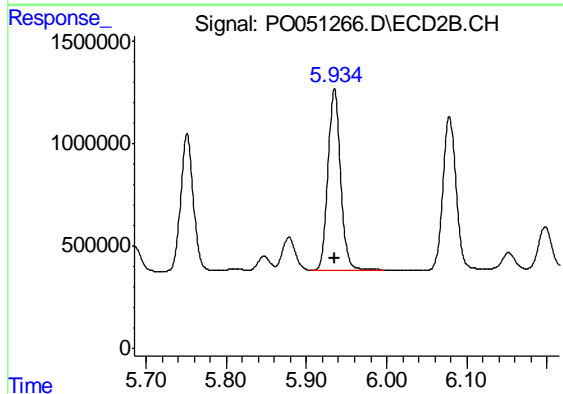
R.T.: 5.751 min  
 Delta R.T.: 0.000 min  
 Response: 7360179  
 Conc: 515.62 ng/ml



#32 AR-1260-2

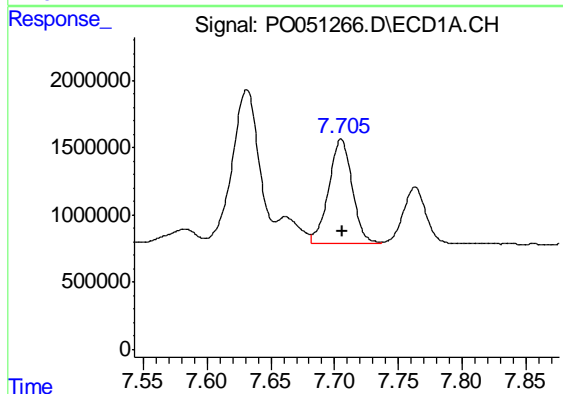
R.T.: 7.348 min  
Delta R.T.: -0.001 min  
Response: 14575000  
Conc: 507.74 ng/ml

Instrument :  
ECD\_O  
ClientSampleId :  
ICVPO110918



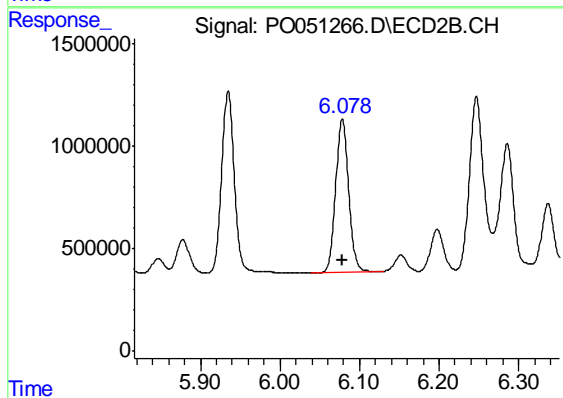
#32 AR-1260-2

R.T.: 5.935 min  
Delta R.T.: 0.000 min  
Response: 9690417  
Conc: 511.70 ng/ml



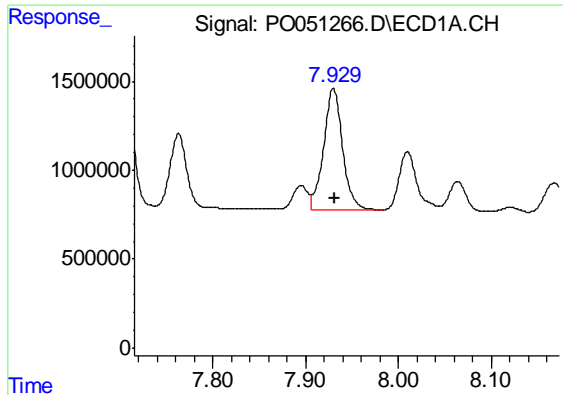
#33 AR-1260-3

R.T.: 7.705 min  
Delta R.T.: 0.000 min  
Response: 9861791  
Conc: 504.46 ng/ml



#33 AR-1260-3

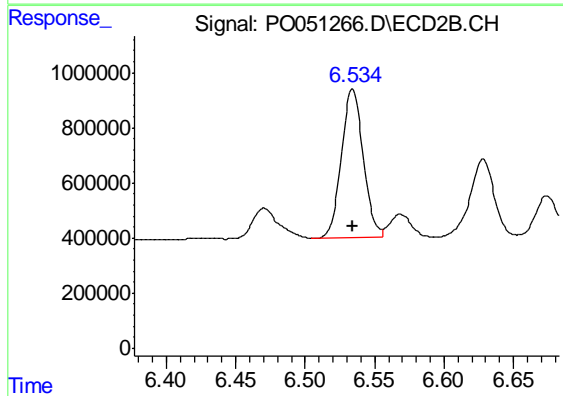
R.T.: 6.078 min  
Delta R.T.: 0.000 min  
Response: 8527418  
Conc: 518.65 ng/ml



#34 AR-1260-4

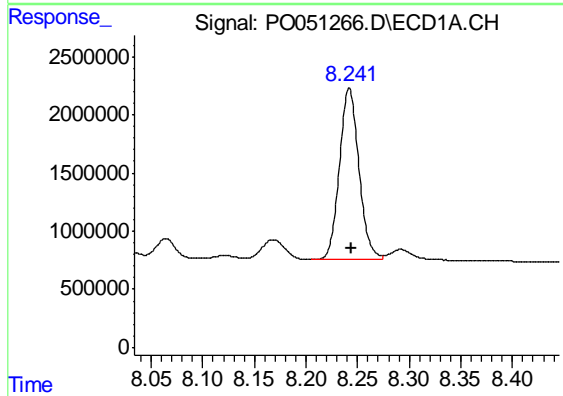
R.T.: 7.930 min  
Delta R.T.: -0.002 min  
Response: 9736275  
Conc: 518.33 ng/ml

Instrument :  
ECD\_O  
ClientSampleId :  
ICVPO110918



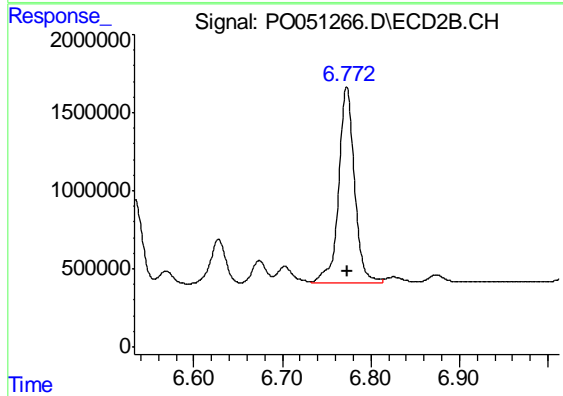
#34 AR-1260-4

R.T.: 6.534 min  
Delta R.T.: 0.000 min  
Response: 5923588  
Conc: 544.50 ng/ml



#35 AR-1260-5

R.T.: 8.242 min  
Delta R.T.: -0.002 min  
Response: 19514796  
Conc: 516.25 ng/ml



#35 AR-1260-5

R.T.: 6.773 min  
Delta R.T.: 0.000 min  
Response: 15654673  
Conc: 537.19 ng/ml