

Data Path : Z:\pestpcbsrv\HPCHEM1\ECD\_0\Data\PO110922\  
 Data File : PO090392.D  
 Signal(s) : Signal #1: ECD1A.ch Signal #2: ECD2B.ch  
 Acq On : 09 Nov 2022 21:59  
 Operator : YP/AJ  
 Sample : AR1242CCC500  
 Misc :  
 ALS Vial : 4 Sample Multiplier: 1

Instrument :  
 ECD\_0  
 ClientSampleId :  
 AR1242CCC500

Integration File signal 1: autoint1.e  
 Integration File signal 2: autoint2.e  
 Quant Time: Nov 10 03:07:00 2022  
 Quant Method : Z:\pestpcbsrv\HPCHEM1\ECD\_0\methods\PO102722.M  
 Quant Title : GC EXTRACTABLES  
 QLast Update : Fri Oct 28 05:05:44 2022  
 Response via : Initial Calibration  
 Integrator: ChemStation

Volume Inj. : 2 µl  
 Signal #1 Phase : ZB-MR1 Signal #2 Phase: ZB-MR2  
 Signal #1 Info : 30Mx0.32mmx 0.50µ Signal #2 Info : 30M x 0.32mm x 0.25µm

Compound	RT#1	RT#2	Resp#1	Resp#2	ng/ml	ng/ml
-----						
System Monitoring Compounds						
1) SA Tetrachlo...	4.301	3.480	170.2E6	53310456	52.965	50.161
2) SA Decachlor...	10.044	8.482	121.8E6	48868307	49.718	47.448
Target Compounds						
16) L4 AR-1242-1	5.476	4.566	42021143	14864252	507.864	499.274
17) L4 AR-1242-2	5.499	4.584	59527229	20702567	504.034	508.976
18) L4 AR-1242-3	5.561	4.760	37508767	11398978	503.901	515.502
19) L4 AR-1242-4	5.659	4.844	29856000	12111789	512.466	510.752
20) L4 AR-1242-5	6.401	5.369	30640662	15117633	498.471	528.496
-----						

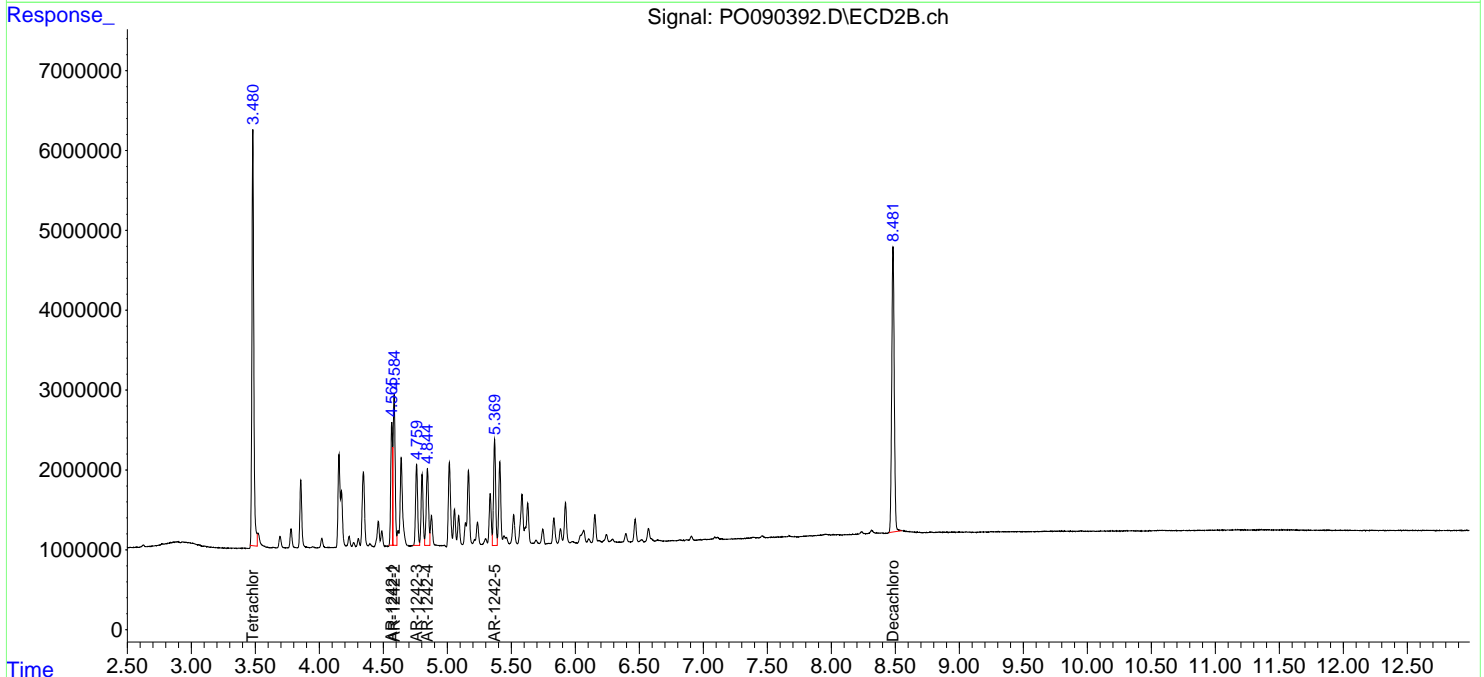
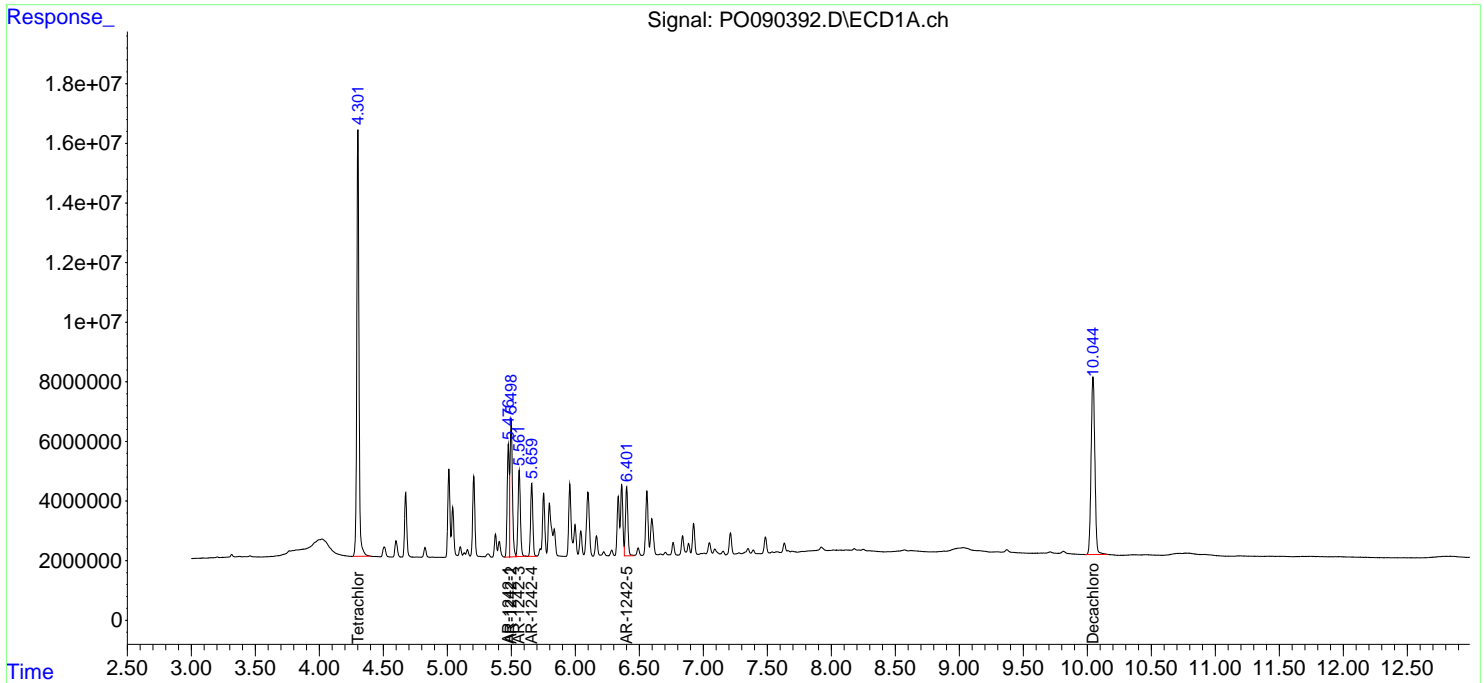
(f)=RT Delta > 1/2 Window (#)=Amounts differ by > 25% (m)=manual int.

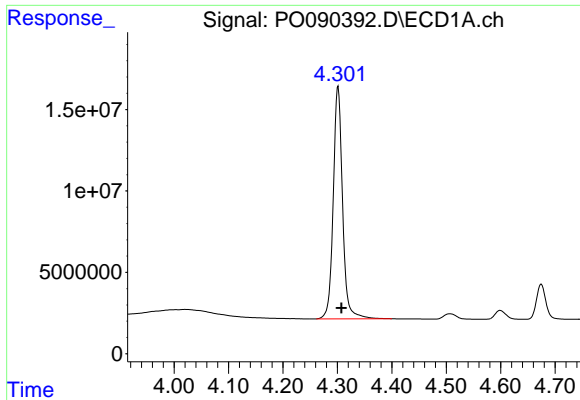
Data Path : Z:\pestpcbsrv\HPCHEM1\ECD\_O\Data\PO110922\  
 Data File : PO090392.D  
 Signal(s) : Signal #1: ECD1A.ch Signal #2: ECD2B.ch  
 Acq On : 09 Nov 2022 21:59  
 Operator : YP/AJ  
 Sample : AR1242CCC500  
 Misc :  
 ALS Vial : 4 Sample Multiplier: 1

Instrument :  
 ECD\_O  
 ClientSampleId :  
 AR1242CCC500

Integration File signal 1: autoint1.e  
 Integration File signal 2: autoint2.e  
 Quant Time: Nov 10 03:07:00 2022  
 Quant Method : Z:\pestpcbsrv\HPCHEM1\ECD\_O\methods\PO102722.M  
 Quant Title : GC EXTRACTABLES  
 QLast Update : Fri Oct 28 05:05:44 2022  
 Response via : Initial Calibration  
 Integrator: ChemStation

Volume Inj. : 2 µl  
 Signal #1 Phase : ZB-MR1 Signal #2 Phase: ZB-MR2  
 Signal #1 Info : 30Mx0.32mmx 0.50µ Signal #2 Info : 30M x 0.32mm x 0.25µm

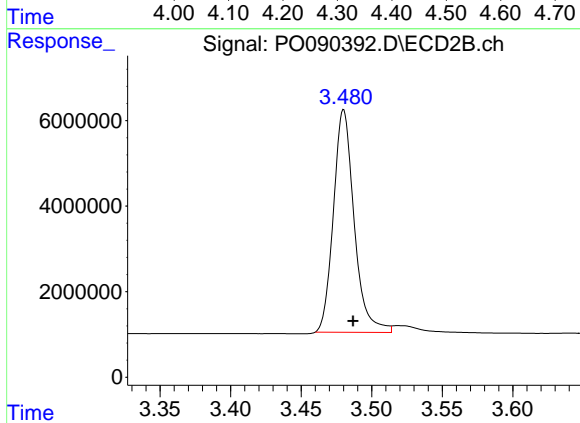




#1 Tetrachloro-m-xylene

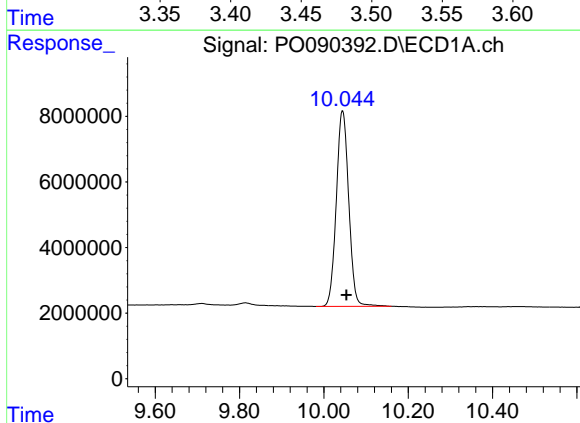
R.T.: 4.301 min  
 Delta R.T.: -0.006 min  
 Response: 170224599  
 Conc: 52.97 ng/ml

Instrument :  
 ECD\_O  
 ClientSampleId :  
 AR1242CCC500



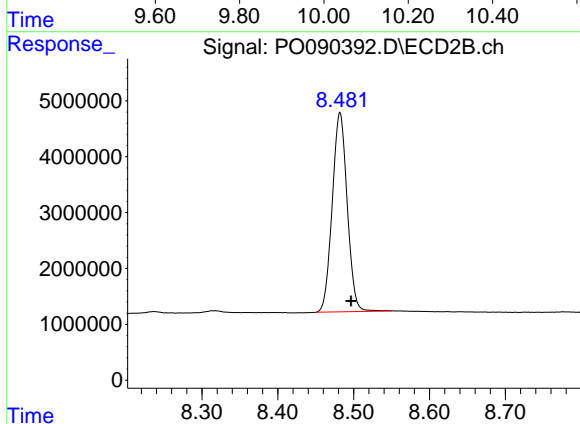
#1 Tetrachloro-m-xylene

R.T.: 3.480 min  
 Delta R.T.: -0.007 min  
 Response: 53310456  
 Conc: 50.16 ng/ml



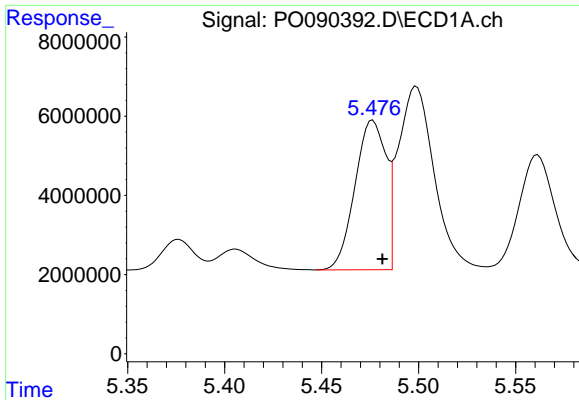
#2 Decachlorobiphenyl

R.T.: 10.044 min  
 Delta R.T.: -0.009 min  
 Response: 121836131  
 Conc: 49.72 ng/ml



#2 Decachlorobiphenyl

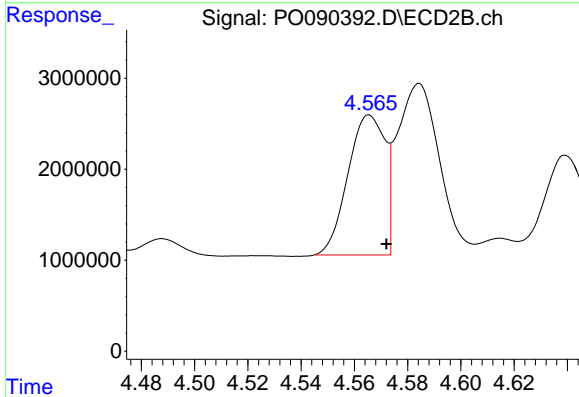
R.T.: 8.482 min  
 Delta R.T.: -0.014 min  
 Response: 48868307  
 Conc: 47.45 ng/ml



#16 AR-1242-1

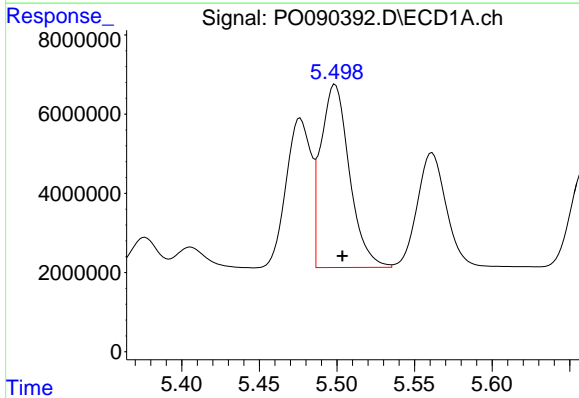
R.T.: 5.476 min  
 Delta R.T.: -0.005 min  
 Response: 42021143  
 Conc: 507.86 ng/ml

Instrument :  
 ECD\_O  
 ClientSampleId :  
 AR1242CCC500



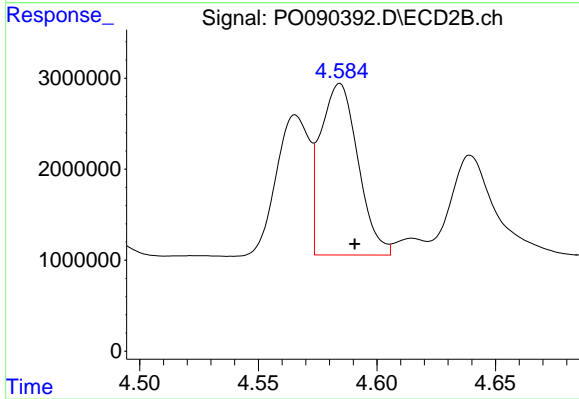
#16 AR-1242-1

R.T.: 4.566 min  
 Delta R.T.: -0.006 min  
 Response: 14864252  
 Conc: 499.27 ng/ml



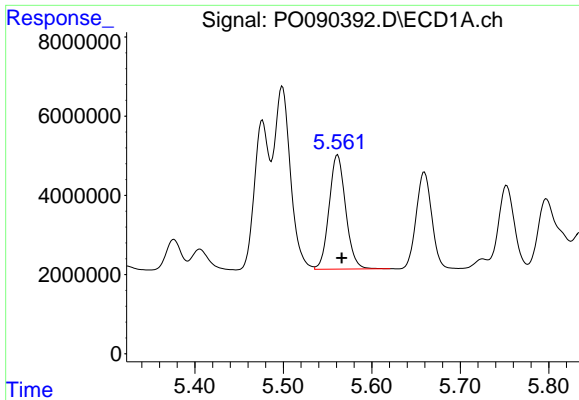
#17 AR-1242-2

R.T.: 5.499 min  
 Delta R.T.: -0.005 min  
 Response: 59527229  
 Conc: 504.03 ng/ml



#17 AR-1242-2

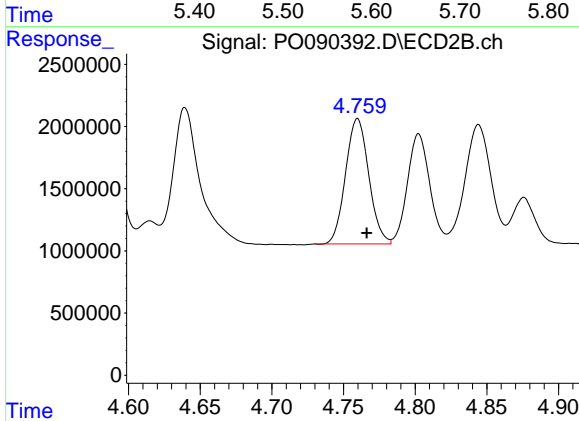
R.T.: 4.584 min  
 Delta R.T.: -0.006 min  
 Response: 20702567  
 Conc: 508.98 ng/ml



#18 AR-1242-3

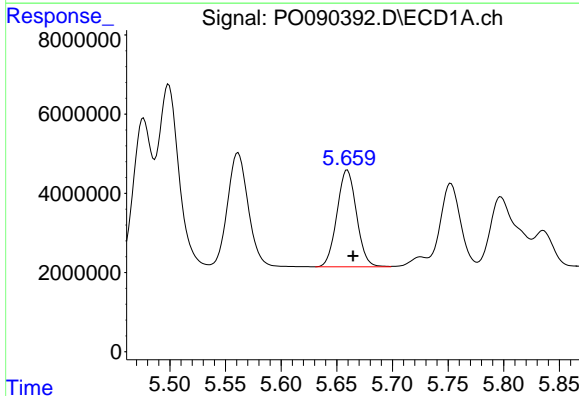
R.T.: 5.561 min  
 Delta R.T.: -0.005 min  
 Response: 37508767  
 Conc: 503.90 ng/ml

Instrument :  
 ECD\_O  
 ClientSampleId :  
 AR1242CCC500



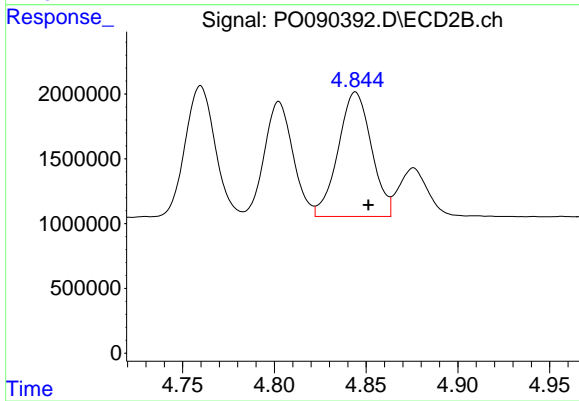
#18 AR-1242-3

R.T.: 4.760 min  
 Delta R.T.: -0.006 min  
 Response: 11398978  
 Conc: 515.50 ng/ml



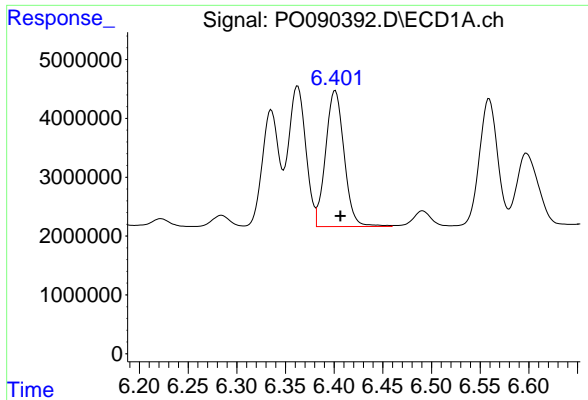
#19 AR-1242-4

R.T.: 5.659 min  
 Delta R.T.: -0.005 min  
 Response: 29856000  
 Conc: 512.47 ng/ml



#19 AR-1242-4

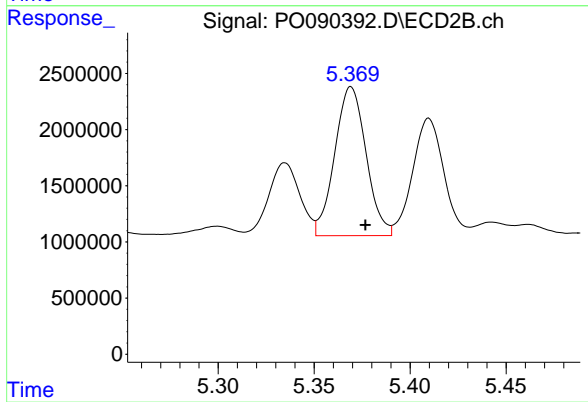
R.T.: 4.844 min  
 Delta R.T.: -0.007 min  
 Response: 12111789  
 Conc: 510.75 ng/ml



#20 AR-1242-5

R.T.: 6.401 min  
Delta R.T.: -0.005 min  
Response: 30640662  
Conc: 498.47 ng/ml

Instrument :  
ECD\_O  
ClientSampleId :  
AR1242CCC500



#20 AR-1242-5

R.T.: 5.369 min  
Delta R.T.: -0.008 min  
Response: 15117633  
Conc: 528.50 ng/ml