

Data Path : Z:\pestpcbsrv\HPCHEM1\ECD_0\Data\PO111018\
 Data File : PO051331.D
 Signal(s) : Signal #1: ECD1A.CH Signal #2: ECD2B.CH
 Acq On : 09 Nov 2018 13:20
 Operator : SM/SJ
 Sample : J5796-13MS
 Misc :
 ALS Vial : 11 Sample Multiplier: 1

Instrument :
 ECD_O
 ClientSampled :

Integration File signal 1: autoint1.e
 Integration File signal 2: autoint2.e
 Quant Time: Nov 09 14:11:54 2018
 Quant Method : Z:\pestpcbsrv\HPCHEM1\ECD_0\methods\PO110918.M
 Quant Title : GC EXTRACTABLES
 QLast Update : Thu Nov 08 14:50:13 2018
 Response via : Initial Calibration
 Integrator: ChemStation 6890 Scale Mode: Small noise peaks clipped

Volume Inj. : 2 µl
 Signal #1 Phase : ZB-MR1 Signal #2 Phase: ZB-MR2
 Signal #1 Info : 30Mx0.32mmx 0.50µ Signal #2 Info : 30M x 0.32mm x 0.25µm

Compound	RT#1	RT#2	Resp#1	Resp#2	ng/ml	ng/ml
System Monitoring Compounds						
1) SA Tetrachlo...	4.335	3.335	19454351	7040667	34.508	31.553
2) SA Decachlor...	9.972	8.067	10830043	6410941	29.186	28.925
Target Compounds						
3) L1 AR-1016-1	5.497	4.348	5003967	2903863	303.724	399.179 #
4) L1 AR-1016-2	5.519	4.363	7397840	4619592	298.630	369.296
5) L1 AR-1016-3	5.581	4.527	4508455	1923577	295.172	316.142
6) L1 AR-1016-4	5.680	4.570	4805886	1498072	389.446	299.540
7) L1 AR-1016-5	5.971	4.769	3845431	1847748	345.839	285.074
9) L2 AR-1221-2	4.631	3.615	658840	315524	162.488	199.688
10) L2 AR-1221-3	4.706	3.686	2491658	1428172	192.808	267.040 #
11) L3 AR-1232-1	4.706	3.686	2491658	1428172	249.721	337.921 #
12) L3 AR-1232-2	5.232	4.363	3899484	4619592	744.017	805.143
13) L3 AR-1232-3	5.519	4.527	7397840	1923577	668.765	750.033
14) L3 AR-1232-4	5.680	4.608	4805886	1694113	915.260	764.829
15) L3 AR-1232-5	5.768	4.769	3439825	1847748	917.873	721.143
16) L4 AR-1242-1	5.519	4.363	7397840	4619592	350.072	731.692 #
17) L4 AR-1242-2	5.519	4.363	7397840	4619592	350.072	449.542 #
18) L4 AR-1242-3	5.581	4.527	4508455	1923577	354.751	366.799
19) L4 AR-1242-4	5.680	4.608	4805886	1694113	464.398	341.633 #
20) L4 AR-1242-5	6.413	5.101	419355	1728507	39.278	272.776 #
21) L5 AR-1248-1	5.497	4.363	5003967	4619592	432.840	864.664 #
22) L5 AR-1248-2	5.768	4.570	3439825	1498072	218.515	191.138
23) L5 AR-1248-3	5.971	4.608	3845431	1694113	216.148	216.555
24) L5 AR-1248-4	6.375	4.769	618629	1847748	31.004	188.778 #
25) L5 AR-1248-5	6.413	5.190	419355	398265	22.246	40.509 #
26) L6 AR-1254-1	6.346	5.101	2618343	1728507	134.902	114.931
27) L6 AR-1254-2	6.562	5.242	3642265	1640402	120.522	125.038
28) L6 AR-1254-3	6.929	5.640	2963315	5016747	97.411	238.929 #
29) L6 AR-1254-4	7.212	5.845	1209789	1010150	54.217	77.492 #
30) L6 AR-1254-5	7.652	6.246	6416893	9650224	288.026	540.733 #
31) L7 AR-1260-1	7.090	5.749	6990104	6033337	313.594	422.664 #
32) L7 AR-1260-2	7.343	5.932	15882969	7290060	553.310	384.953 #
33) L7 AR-1260-3	7.703	6.076	6108762	5641430	312.484	343.118
34) L7 AR-1260-4	7.928	6.531	6128979	3607113	326.286	331.569
35) L7 AR-1260-5	8.239	6.770	12426586	10002933	328.734	343.248
36) L8 AR-1262-1	7.703	6.284	6108762	4872743	188.903	210.385
37) L8 AR-1262-2	8.239	6.770	12426586	10002933	252.597	266.969
38) L8 AR-1262-3	8.558	7.044	7722568	2039871	250.229	131.856 #
39) L8 AR-1262-4	8.627	7.104	1910709	6569390	78.492	252.016 #
40) L8 AR-1262-5	9.259	7.590	2916118	1840886	185.822	162.822
41) L9 AR-1268-1	8.558	7.044	7722568	2039871	118.337	40.716 #
42) L9 AR-1268-2	8.627	7.104	1910709	6569390	32.672	150.716 #

Data Path : Z:\pestpcbsrv\HPCHEM1\ECD_0\Data\PO111018\
 Data File : PO051331.D
 Signal(s) : Signal #1: ECD1A.CH Signal #2: ECD2B.CH
 Acq On : 09 Nov 2018 13:20
 Operator : SM/SJ
 Sample : J5796-13MS
 Misc :
 ALS Vial : 11 Sample Multiplier: 1

Instrument :
 ECD_0
 ClientSampleId :

Integration File signal 1: autoint1.e
 Integration File signal 2: autoint2.e
 Quant Time: Nov 09 14:11:54 2018
 Quant Method : Z:\pestpcbsrv\HPCHEM1\ECD_0\methods\PO110918.M
 Quant Title : GC EXTRACTABLES
 QLast Update : Thu Nov 08 14:50:13 2018
 Response via : Initial Calibration
 Integrator: ChemStation 6890 Scale Mode: Small noise peaks clipped

Volume Inj. : 2 µl
 Signal #1 Phase : ZB-MR1 Signal #2 Phase: ZB-MR2
 Signal #1 Info : 30Mx0.32mmx 0.50µ Signal #2 Info : 30M x 0.32mm x 0.25µm

	Compound	RT#1	RT#2	Resp#1	Resp#2	ng/ml	ng/ml
43)	L9 AR-1268-3	0.000	7.302	0	444758	N.D.	11.370 #
44)	L9 AR-1268-4	9.259	7.590	2916118	1840886	153.067	132.832
45)	L9 AR-1268-5	9.653	7.854	1543716	1182406	10.142	11.787

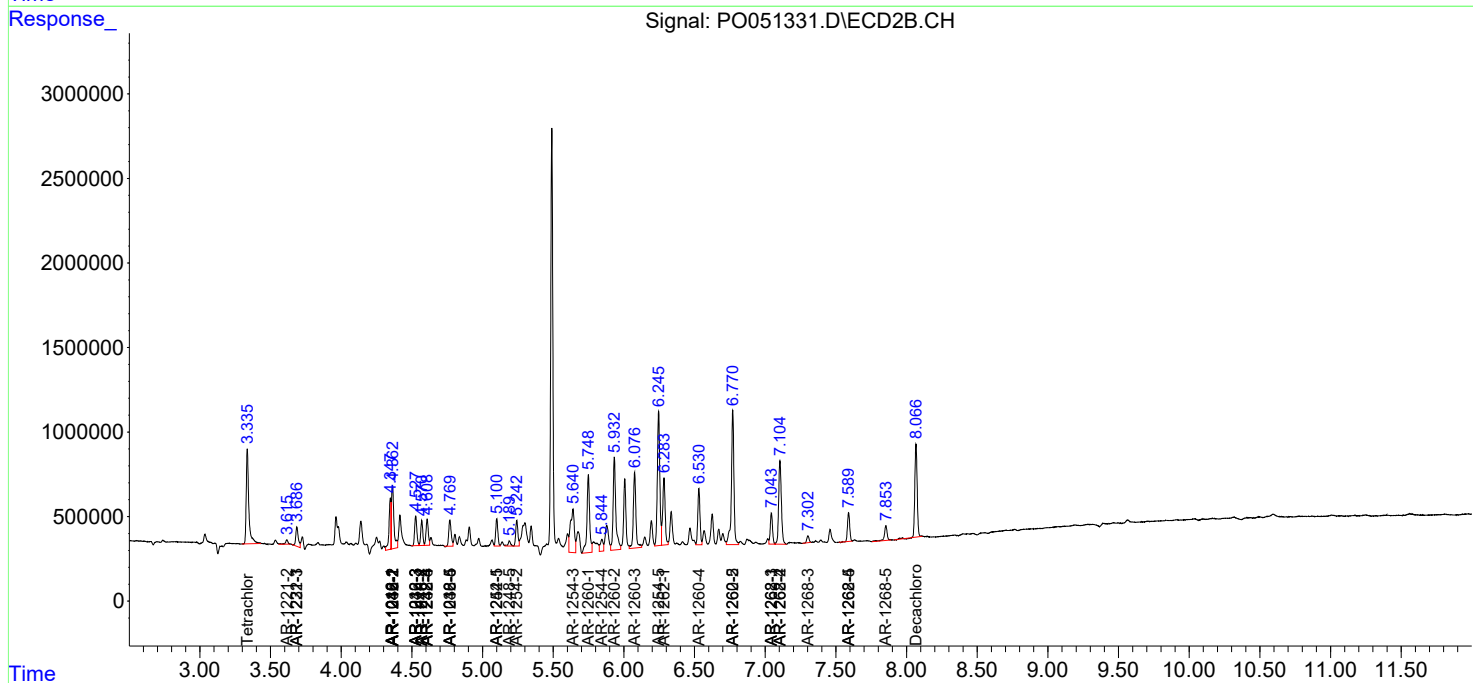
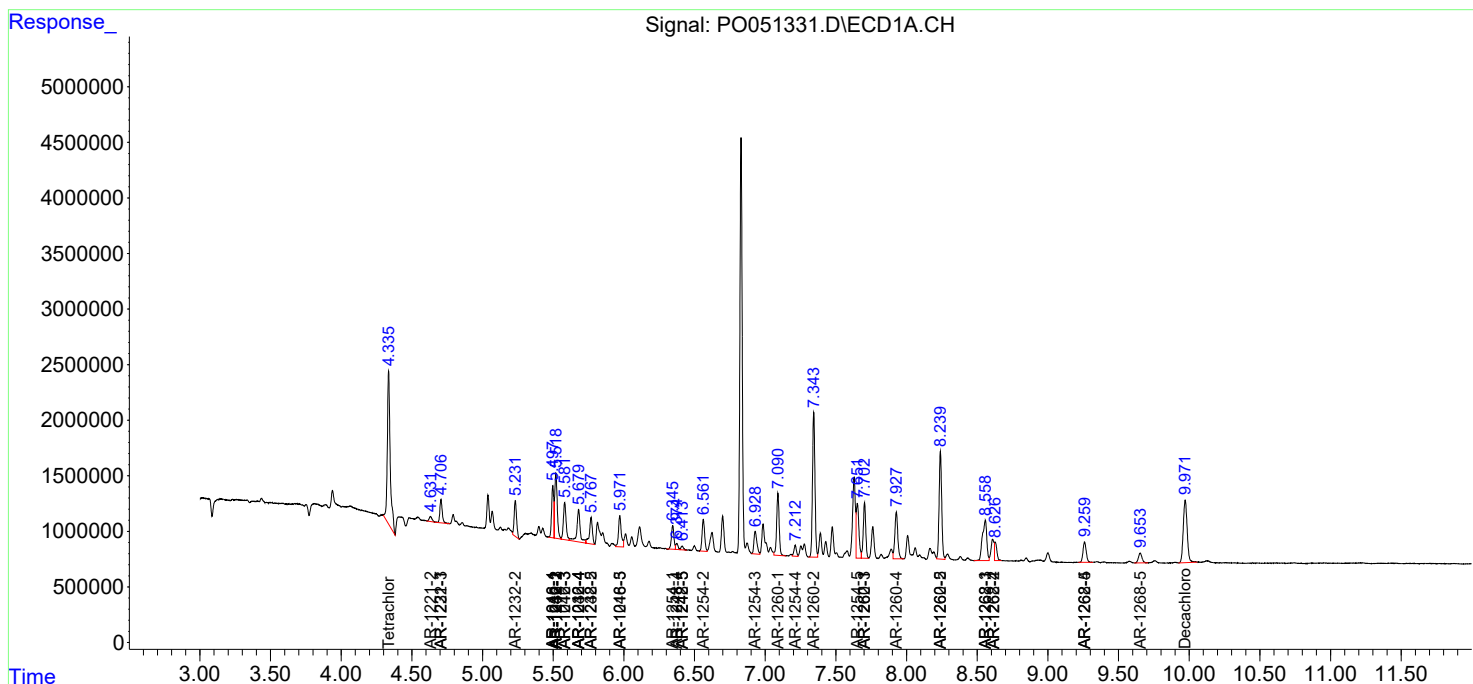
(f)=RT Delta > 1/2 Window (#)=Amounts differ by > 25% (m)=manual int.

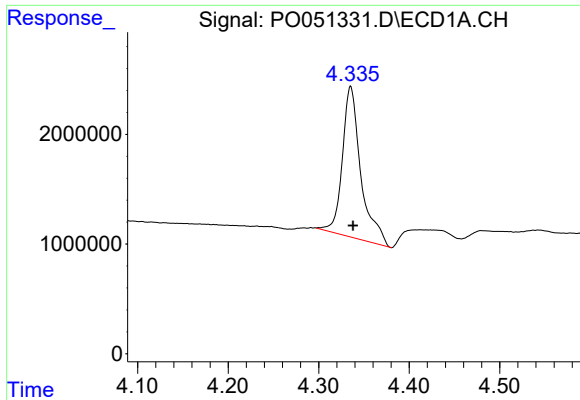
Data Path : Z:\pestpcbsrv\HPCHEM1\ECD_O\Data\PO111018\
 Data File : PO051331.D
 Signal(s) : Signal #1: ECD1A.CH Signal #2: ECD2B.CH
 Acq On : 09 Nov 2018 13:20
 Operator : SM/SJ
 Sample : J5796-13MS
 Misc :
 ALS Vial : 11 Sample Multiplier: 1

Instrument :
 ECD_O
 ClientSampled :

Integration File signal 1: autoint1.e
 Integration File signal 2: autoint2.e
 Quant Time: Nov 09 14:11:54 2018
 Quant Method : Z:\pestpcbsrv\HPCHEM1\ECD_O\methods\PO110918.M
 Quant Title : GC EXTRACTABLES
 QLast Update : Thu Nov 08 14:50:13 2018
 Response via : Initial Calibration
 Integrator: ChemStation 6890 Scale Mode: Small noise peaks clipped

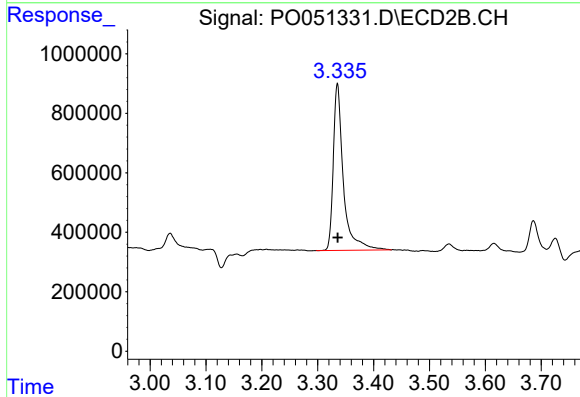
Volume Inj. : 2 µl
 Signal #1 Phase : ZB-MR1 Signal #2 Phase: ZB-MR2
 Signal #1 Info : 30Mx0.32mmx 0.50µ Signal #2 Info : 30M x 0.32mm x 0.25µm



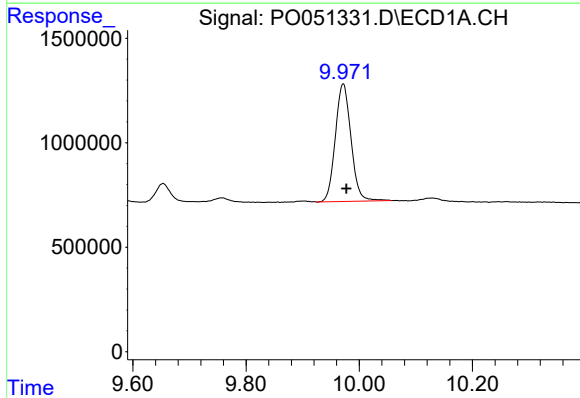


#1 Tetrachloro-m-xylene
 R.T.: 4.335 min
 Delta R.T.: -0.003 min
 Response: 19454351
 Conc: 34.51 ng/ml

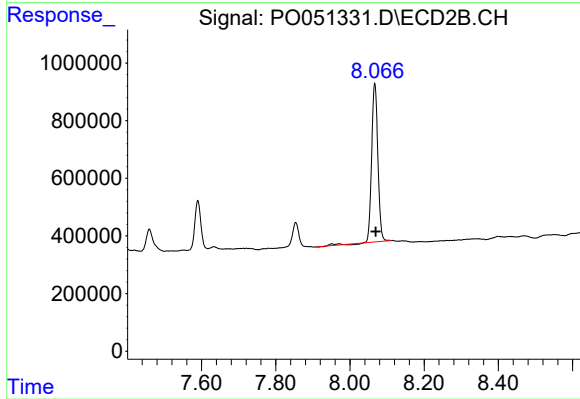
Instrument :
 ECD_O
 ClientSampleId :



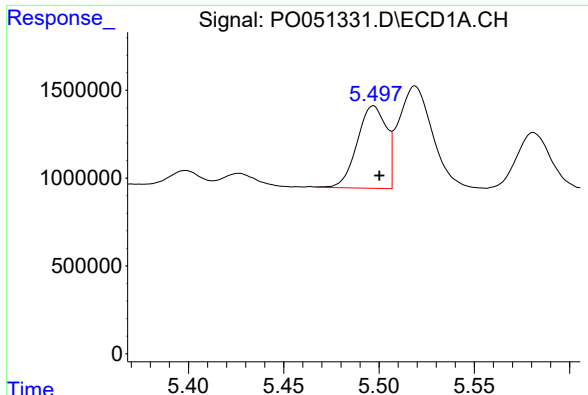
#1 Tetrachloro-m-xylene
 R.T.: 3.335 min
 Delta R.T.: 0.000 min
 Response: 7040667
 Conc: 31.55 ng/ml



#2 Decachlorobiphenyl
 R.T.: 9.972 min
 Delta R.T.: -0.006 min
 Response: 10830043
 Conc: 29.19 ng/ml

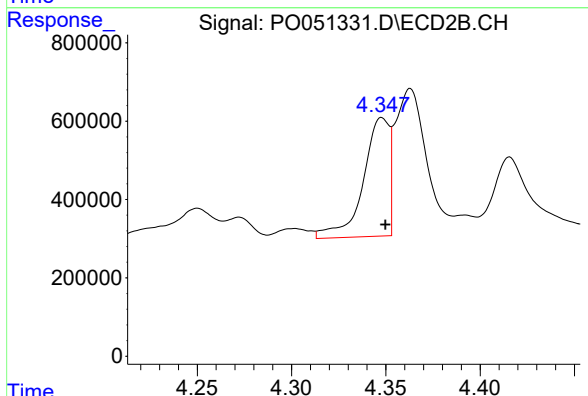


#2 Decachlorobiphenyl
 R.T.: 8.067 min
 Delta R.T.: -0.003 min
 Response: 6410941
 Conc: 28.92 ng/ml

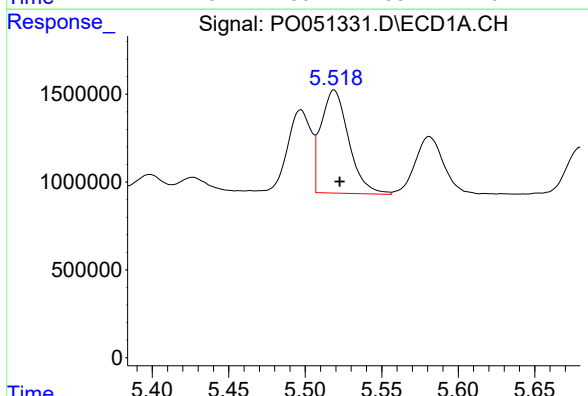


#3 AR-1016-1
 R.T.: 5.497 min
 Delta R.T.: -0.003 min
 Response: 5003967
 Conc: 303.72 ng/ml

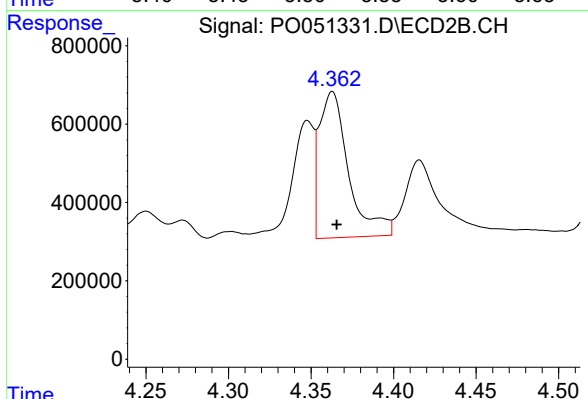
Instrument :
 ECD_O
 ClientSampled :



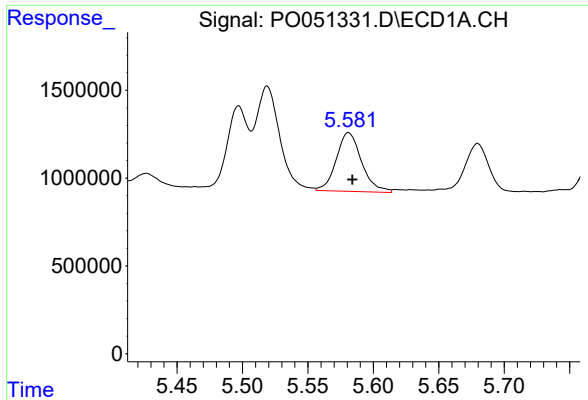
#3 AR-1016-1
 R.T.: 4.348 min
 Delta R.T.: -0.002 min
 Response: 2903863
 Conc: 399.18 ng/ml



#4 AR-1016-2
 R.T.: 5.519 min
 Delta R.T.: -0.004 min
 Response: 7397840
 Conc: 298.63 ng/ml

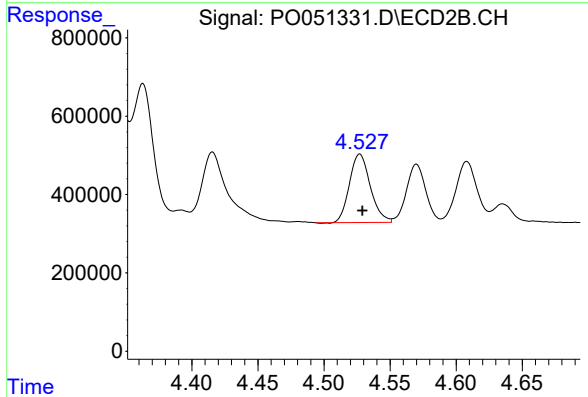


#4 AR-1016-2
 R.T.: 4.363 min
 Delta R.T.: -0.003 min
 Response: 4619592
 Conc: 369.30 ng/ml

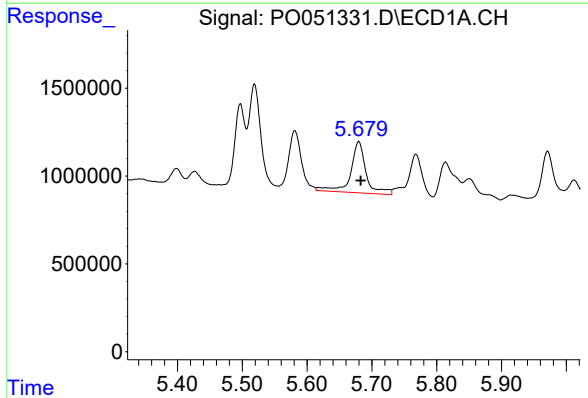


#5 AR-1016-3
 R.T.: 5.581 min
 Delta R.T.: -0.003 min
 Response: 4508455
 Conc: 295.17 ng/ml

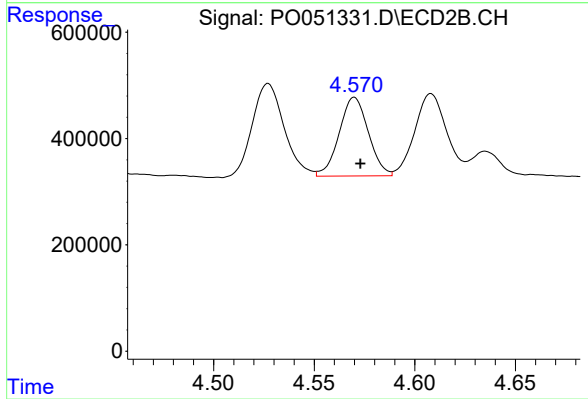
Instrument :
 ECD_O
 ClientSampleId :



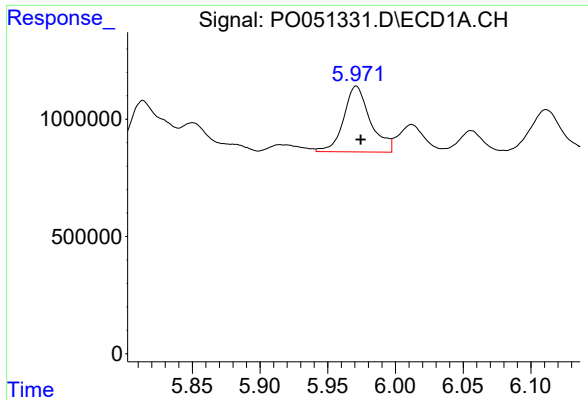
#5 AR-1016-3
 R.T.: 4.527 min
 Delta R.T.: -0.002 min
 Response: 1923577
 Conc: 316.14 ng/ml



#6 AR-1016-4
 R.T.: 5.680 min
 Delta R.T.: -0.003 min
 Response: 4805886
 Conc: 389.45 ng/ml

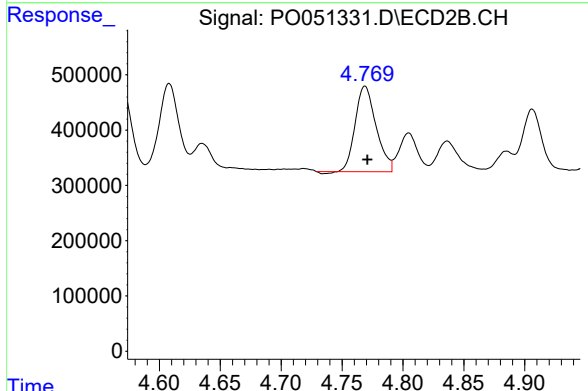


#6 AR-1016-4
 R.T.: 4.570 min
 Delta R.T.: -0.003 min
 Response: 1498072
 Conc: 299.54 ng/ml

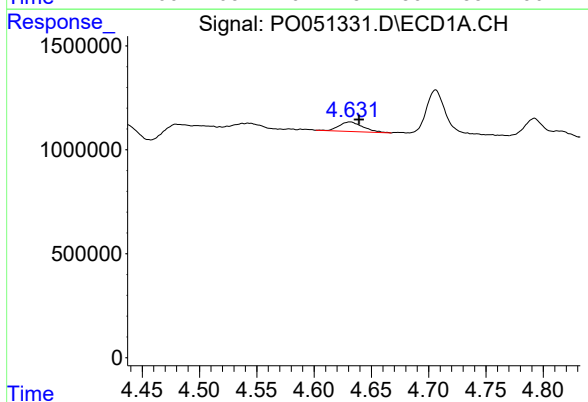


#7 AR-1016-5
 R.T.: 5.971 min
 Delta R.T.: -0.003 min
 Response: 3845431
 Conc: 345.84 ng/ml

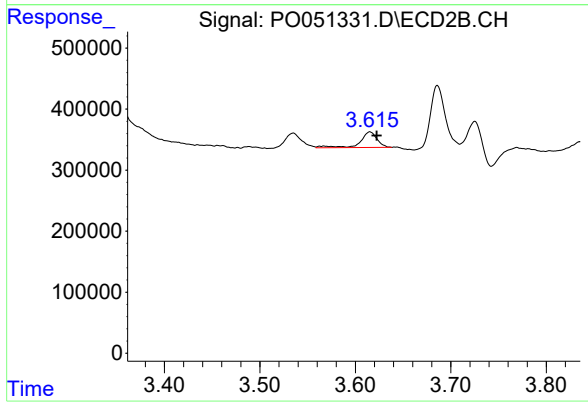
Instrument :
 ECD_O
 ClientSampleId :



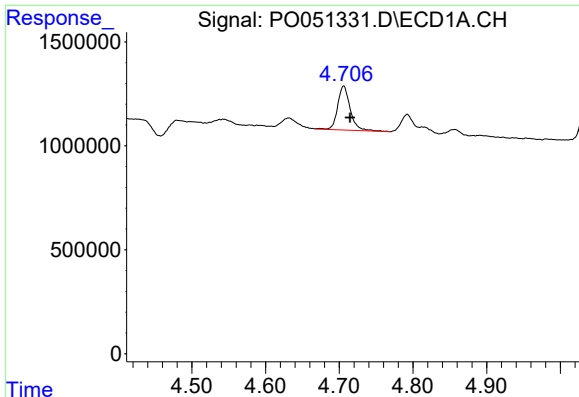
#7 AR-1016-5
 R.T.: 4.769 min
 Delta R.T.: -0.002 min
 Response: 1847748
 Conc: 285.07 ng/ml



#9 AR-1221-2
 R.T.: 4.631 min
 Delta R.T.: -0.008 min
 Response: 658840
 Conc: 162.49 ng/ml



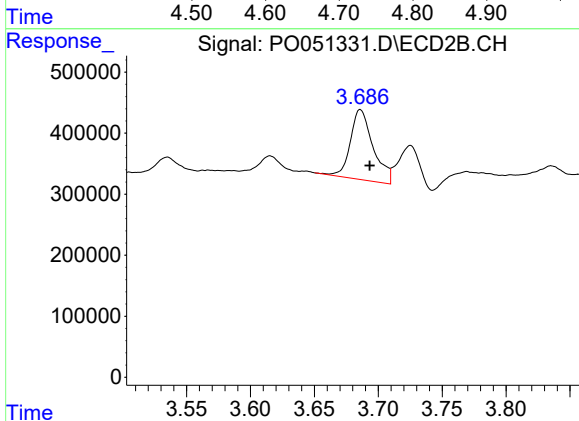
#9 AR-1221-2
 R.T.: 3.615 min
 Delta R.T.: -0.007 min
 Response: 315524
 Conc: 199.69 ng/ml



#10 AR-1221-3

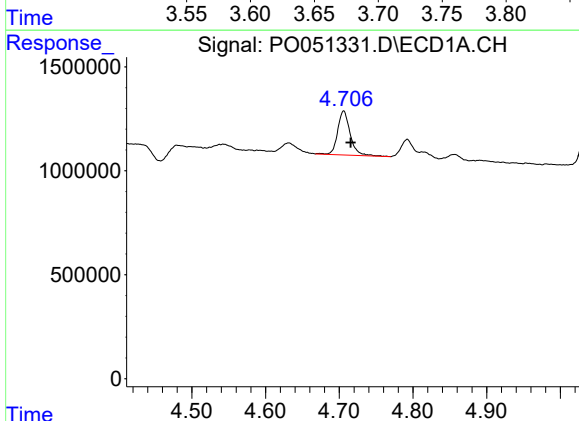
R.T.: 4.706 min
 Delta R.T.: -0.009 min
 Response: 2491658
 Conc: 192.81 ng/ml

Instrument :
 ECD_O
 ClientSampleId :



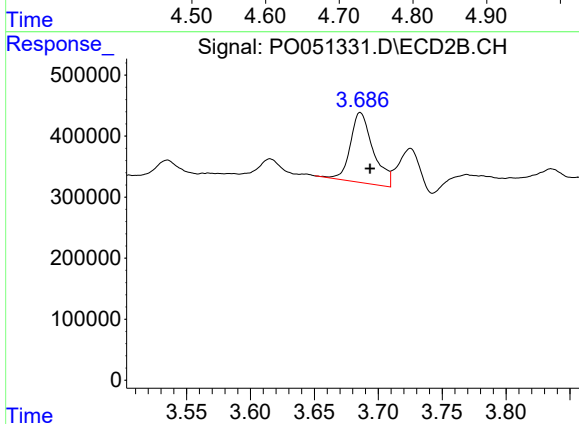
#10 AR-1221-3

R.T.: 3.686 min
 Delta R.T.: -0.007 min
 Response: 1428172
 Conc: 267.04 ng/ml



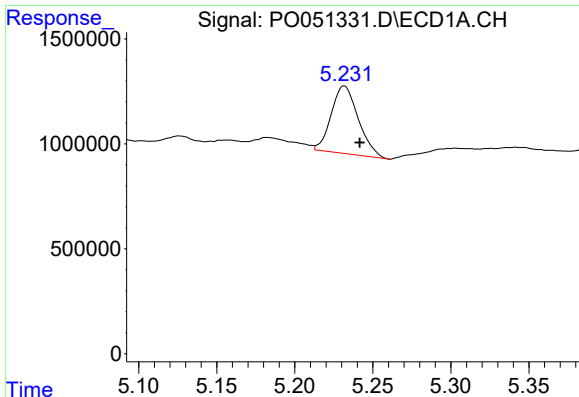
#11 AR-1232-1

R.T.: 4.706 min
 Delta R.T.: -0.009 min
 Response: 2491658
 Conc: 249.72 ng/ml



#11 AR-1232-1

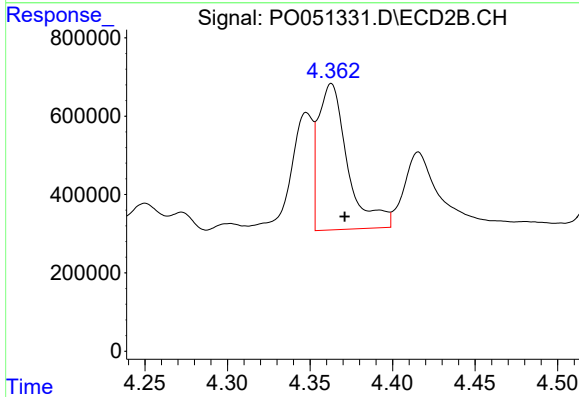
R.T.: 3.686 min
 Delta R.T.: -0.008 min
 Response: 1428172
 Conc: 337.92 ng/ml



#12 AR-1232-2

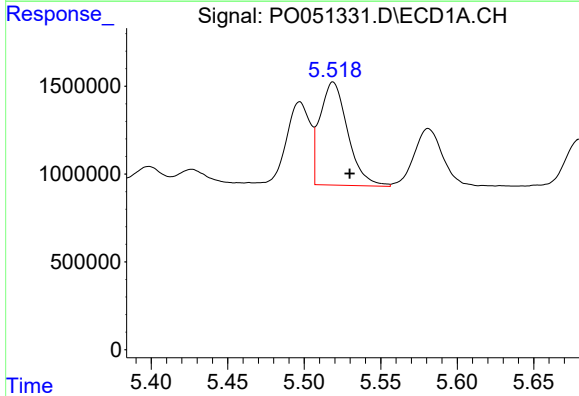
R.T.: 5.232 min
 Delta R.T.: -0.010 min
 Response: 3899484
 Conc: 744.02 ng/ml

Instrument :
 ECD_O
 ClientSampled :



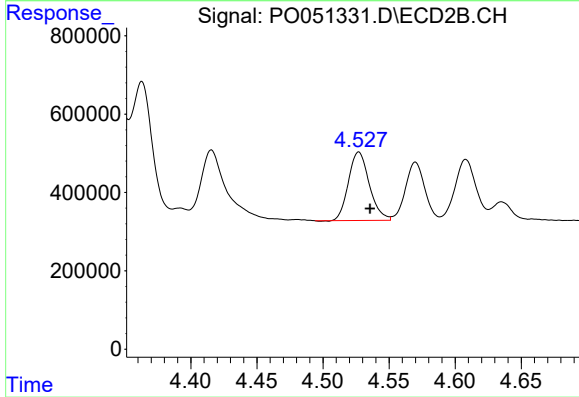
#12 AR-1232-2

R.T.: 4.363 min
 Delta R.T.: -0.008 min
 Response: 4619592
 Conc: 805.14 ng/ml



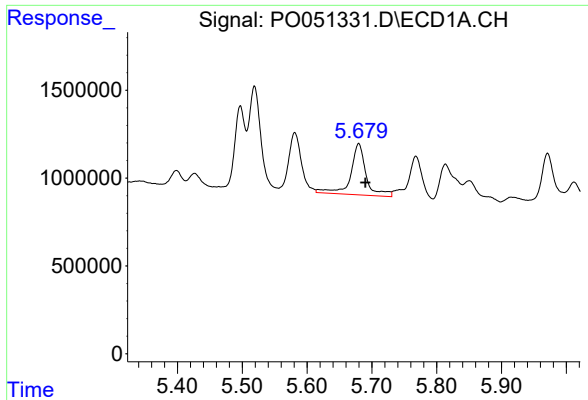
#13 AR-1232-3

R.T.: 5.519 min
 Delta R.T.: -0.011 min
 Response: 7397840
 Conc: 668.77 ng/ml



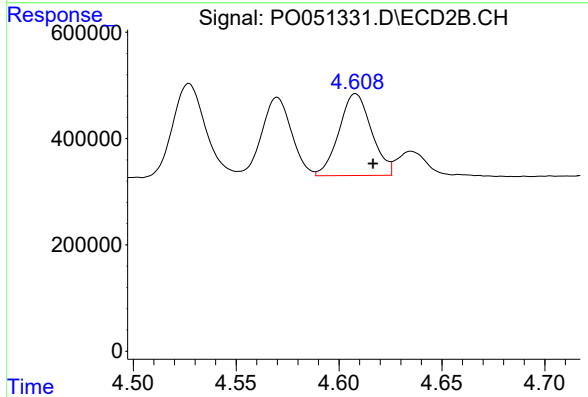
#13 AR-1232-3

R.T.: 4.527 min
 Delta R.T.: -0.009 min
 Response: 1923577
 Conc: 750.03 ng/ml

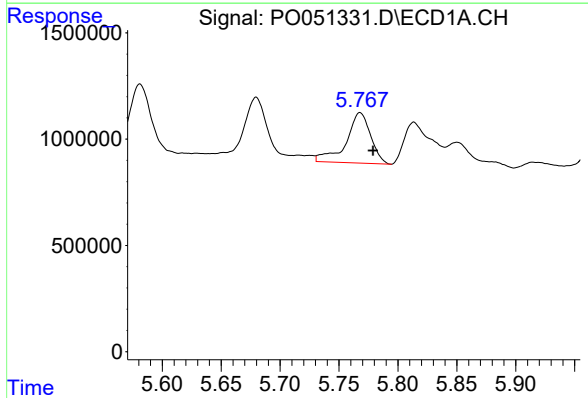


#14 AR-1232-4
 R.T.: 5.680 min
 Delta R.T.: -0.011 min
 Response: 4805886
 Conc: 915.26 ng/ml

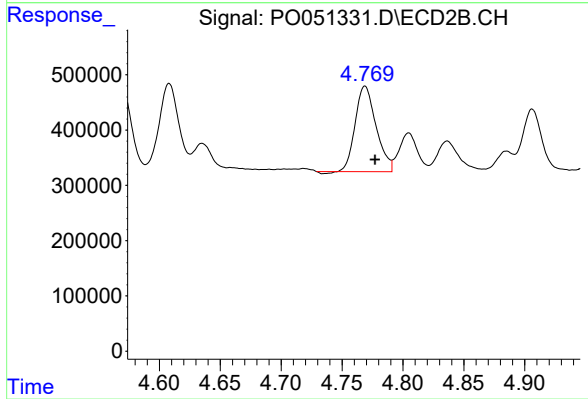
Instrument :
 ECD_O
 ClientSampleId :



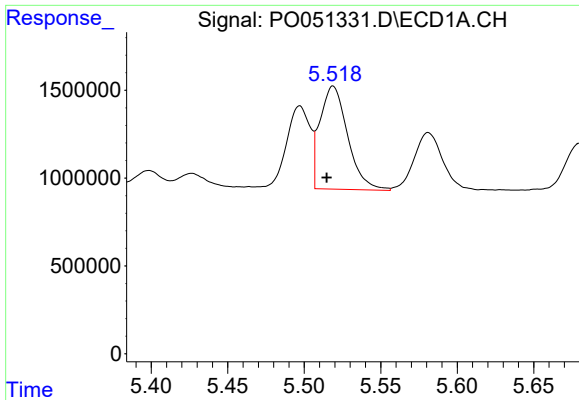
#14 AR-1232-4
 R.T.: 4.608 min
 Delta R.T.: -0.008 min
 Response: 1694113
 Conc: 764.83 ng/ml



#15 AR-1232-5
 R.T.: 5.768 min
 Delta R.T.: -0.011 min
 Response: 3439825
 Conc: 917.87 ng/ml



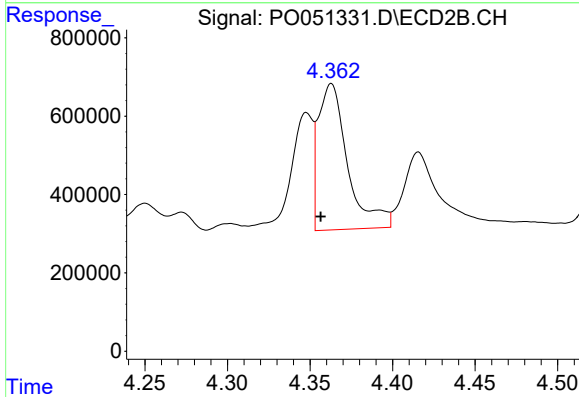
#15 AR-1232-5
 R.T.: 4.769 min
 Delta R.T.: -0.008 min
 Response: 1847748
 Conc: 721.14 ng/ml



#16 AR-1242-1

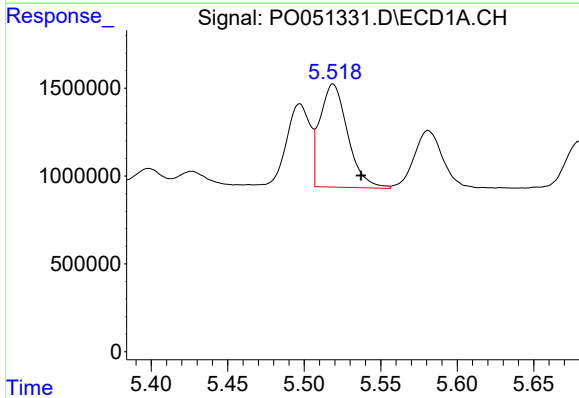
R.T.: 5.519 min
 Delta R.T.: 0.004 min
 Response: 7397840
 Conc: 350.07 ng/ml

Instrument :
 ECD_O
 ClientSampleId :



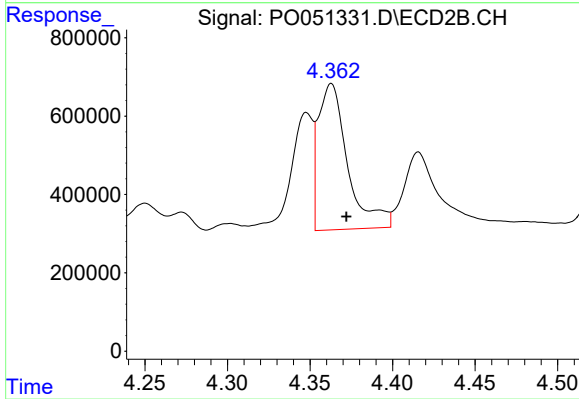
#16 AR-1242-1

R.T.: 4.363 min
 Delta R.T.: 0.006 min
 Response: 4619592
 Conc: 731.69 ng/ml



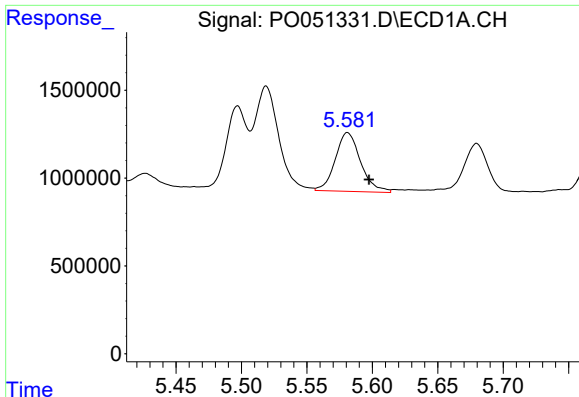
#17 AR-1242-2

R.T.: 5.519 min
 Delta R.T.: -0.018 min
 Response: 7397840
 Conc: 350.07 ng/ml



#17 AR-1242-2

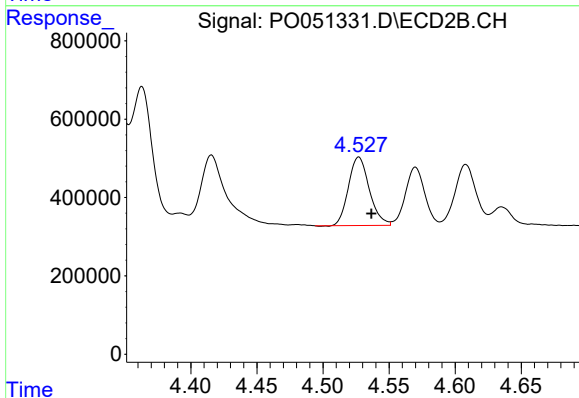
R.T.: 4.363 min
 Delta R.T.: -0.009 min
 Response: 4619592
 Conc: 449.54 ng/ml



#18 AR-1242-3

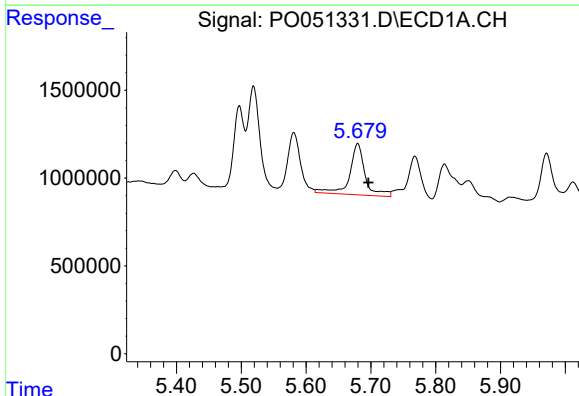
R.T.: 5.581 min
 Delta R.T.: -0.016 min
 Response: 4508455
 Conc: 354.75 ng/ml

Instrument :
 ECD_O
 ClientSampleId :



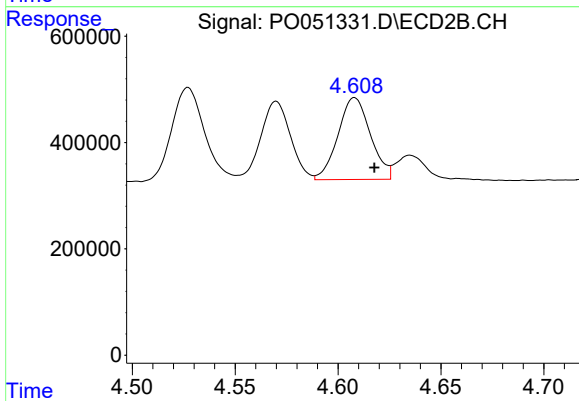
#18 AR-1242-3

R.T.: 4.527 min
 Delta R.T.: -0.010 min
 Response: 1923577
 Conc: 366.80 ng/ml



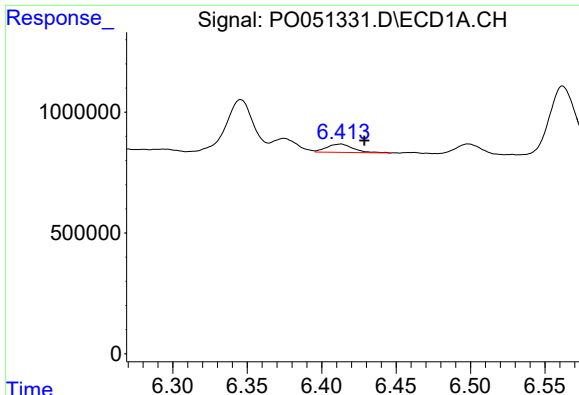
#19 AR-1242-4

R.T.: 5.680 min
 Delta R.T.: -0.017 min
 Response: 4805886
 Conc: 464.40 ng/ml



#19 AR-1242-4

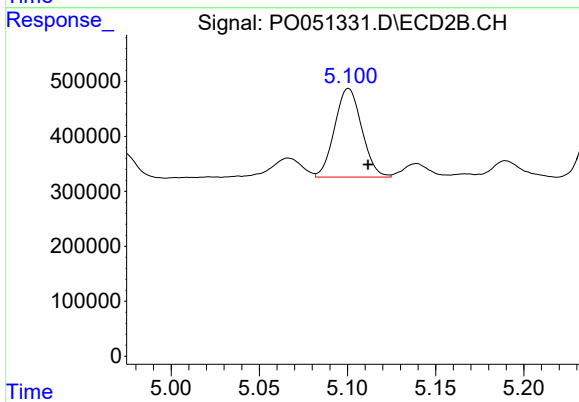
R.T.: 4.608 min
 Delta R.T.: -0.010 min
 Response: 1694113
 Conc: 341.63 ng/ml



#20 AR-1242-5

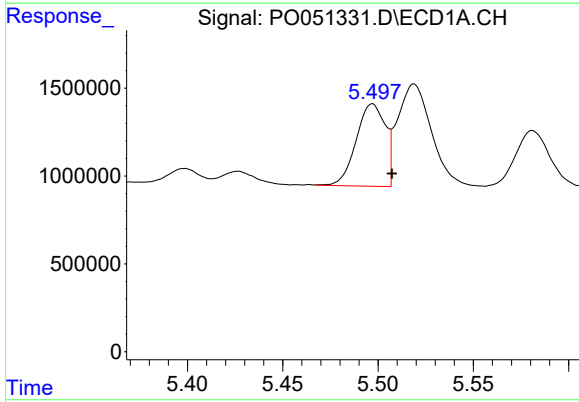
R.T.: 6.413 min
 Delta R.T.: -0.016 min
 Response: 419355
 Conc: 39.28 ng/ml

Instrument :
 ECD_O
 ClientSampleId :



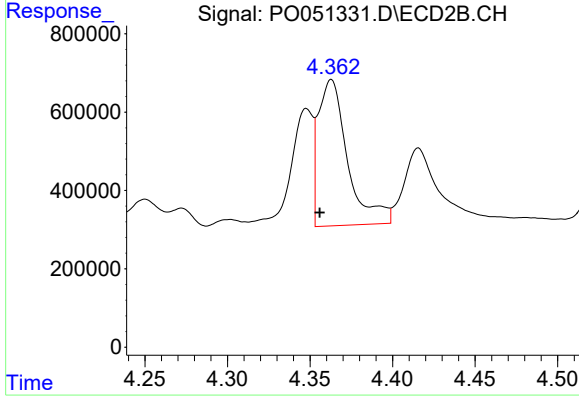
#20 AR-1242-5

R.T.: 5.101 min
 Delta R.T.: -0.011 min
 Response: 1728507
 Conc: 272.78 ng/ml



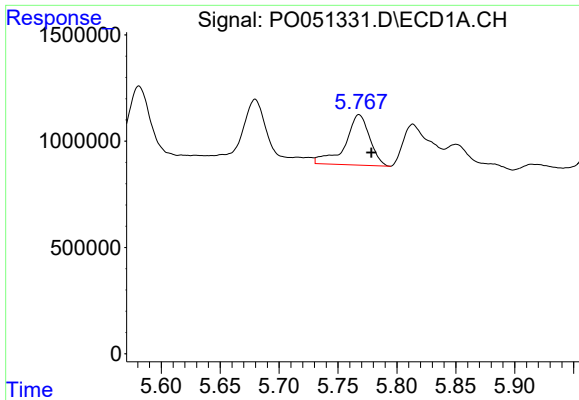
#21 AR-1248-1

R.T.: 5.497 min
 Delta R.T.: -0.010 min
 Response: 5003967
 Conc: 432.84 ng/ml



#21 AR-1248-1

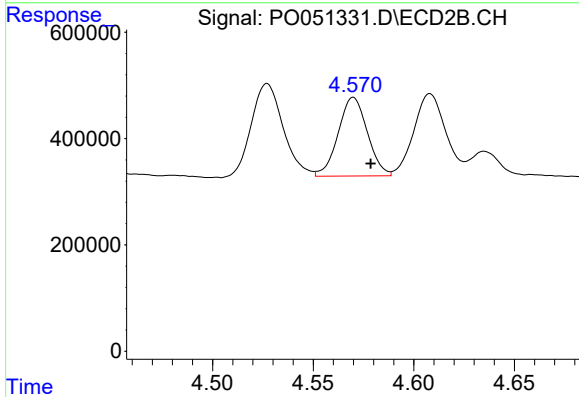
R.T.: 4.363 min
 Delta R.T.: 0.007 min
 Response: 4619592
 Conc: 864.66 ng/ml



#22 AR-1248-2

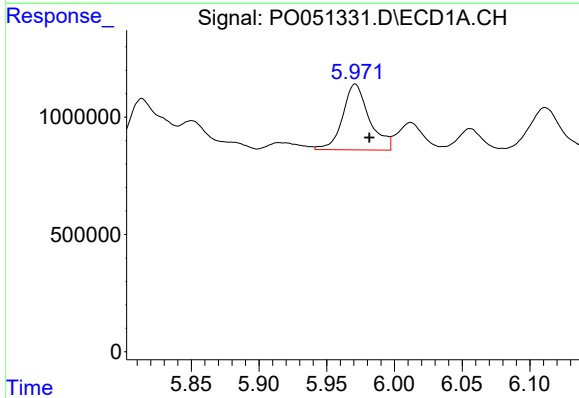
R.T.: 5.768 min
 Delta R.T.: -0.011 min
 Response: 3439825
 Conc: 218.52 ng/ml

Instrument :
 ECD_O
 ClientSampled :



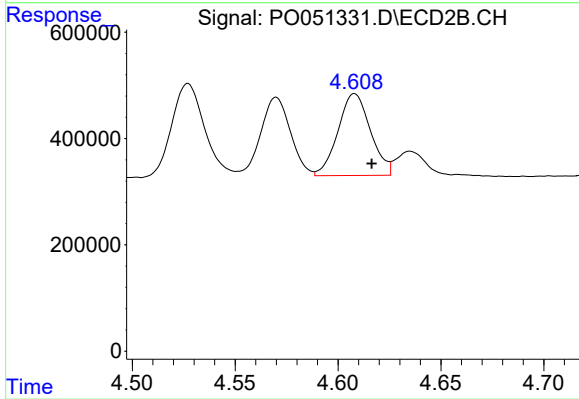
#22 AR-1248-2

R.T.: 4.570 min
 Delta R.T.: -0.009 min
 Response: 1498072
 Conc: 191.14 ng/ml



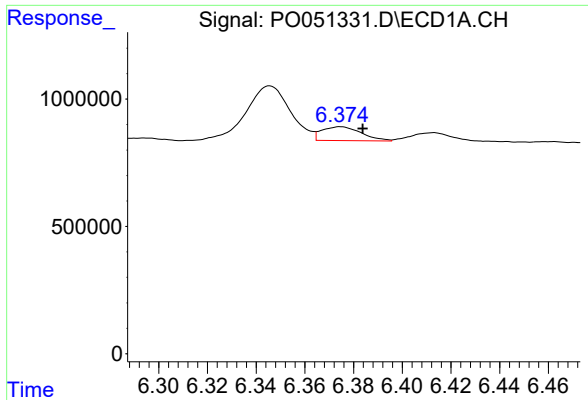
#23 AR-1248-3

R.T.: 5.971 min
 Delta R.T.: -0.010 min
 Response: 3845431
 Conc: 216.15 ng/ml



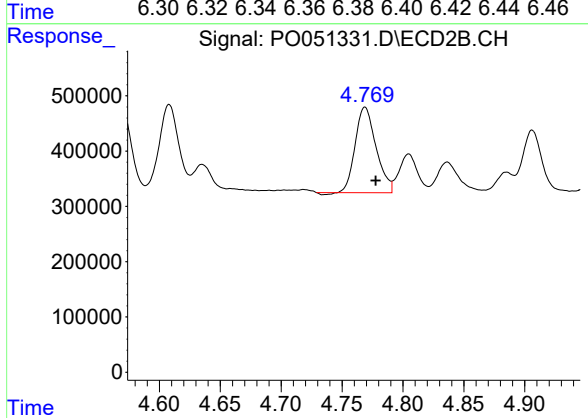
#23 AR-1248-3

R.T.: 4.608 min
 Delta R.T.: -0.008 min
 Response: 1694113
 Conc: 216.56 ng/ml

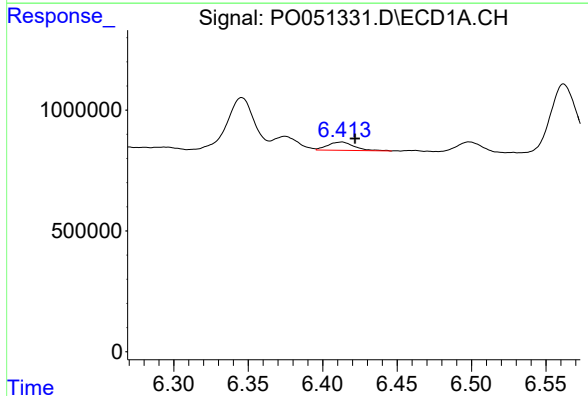


#24 AR-1248-4
 R.T.: 6.375 min
 Delta R.T.: -0.009 min
 Response: 618629
 Conc: 31.00 ng/ml

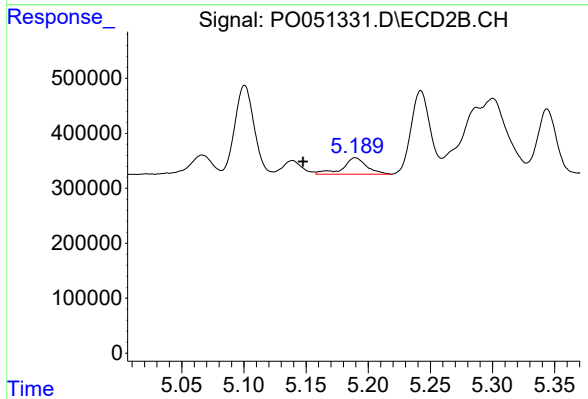
Instrument :
 ECD_O
 ClientSampleId :



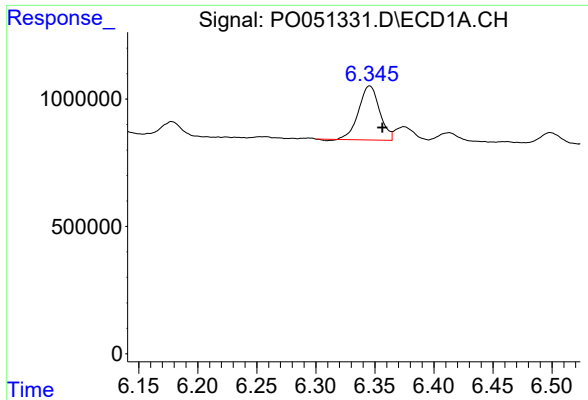
#24 AR-1248-4
 R.T.: 4.769 min
 Delta R.T.: -0.009 min
 Response: 1847748
 Conc: 188.78 ng/ml



#25 AR-1248-5
 R.T.: 6.413 min
 Delta R.T.: -0.009 min
 Response: 419355
 Conc: 22.25 ng/ml



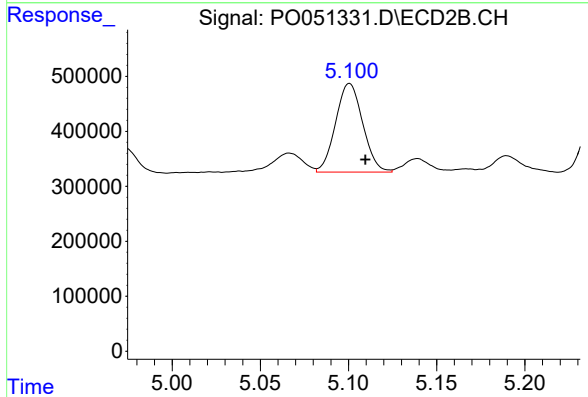
#25 AR-1248-5
 R.T.: 5.190 min
 Delta R.T.: 0.042 min
 Response: 398265
 Conc: 40.51 ng/ml



#26 AR-1254-1

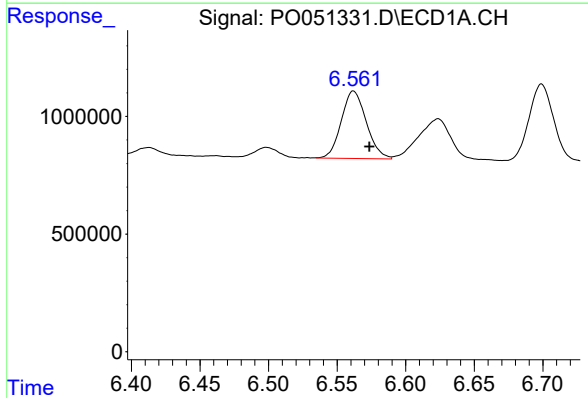
R.T.: 6.346 min
 Delta R.T.: -0.011 min
 Response: 2618343
 Conc: 134.90 ng/ml

Instrument :
 ECD_O
 ClientSampleId :



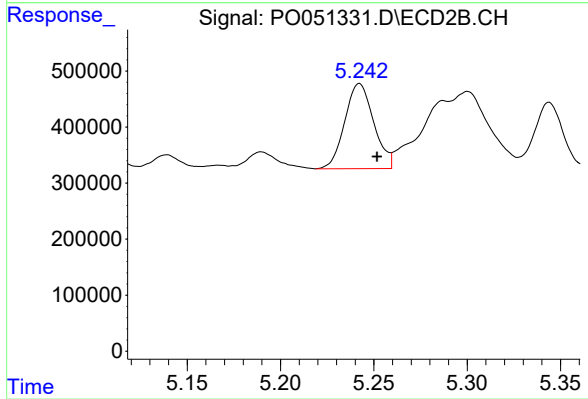
#26 AR-1254-1

R.T.: 5.101 min
 Delta R.T.: -0.009 min
 Response: 1728507
 Conc: 114.93 ng/ml



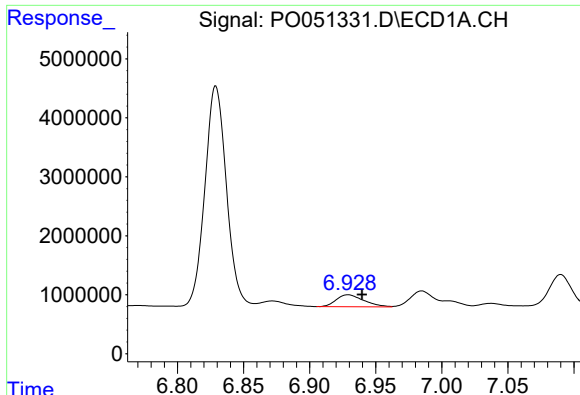
#27 AR-1254-2

R.T.: 6.562 min
 Delta R.T.: -0.012 min
 Response: 3642265
 Conc: 120.52 ng/ml



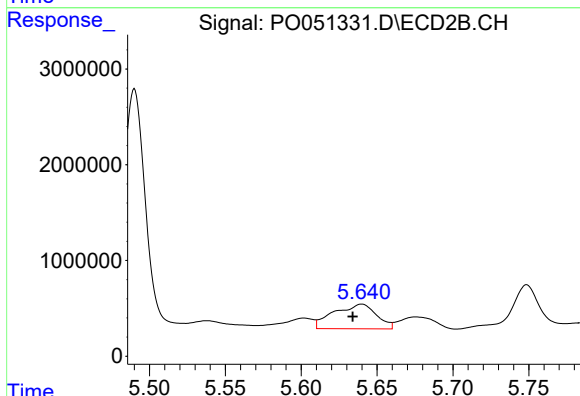
#27 AR-1254-2

R.T.: 5.242 min
 Delta R.T.: -0.009 min
 Response: 1640402
 Conc: 125.04 ng/ml

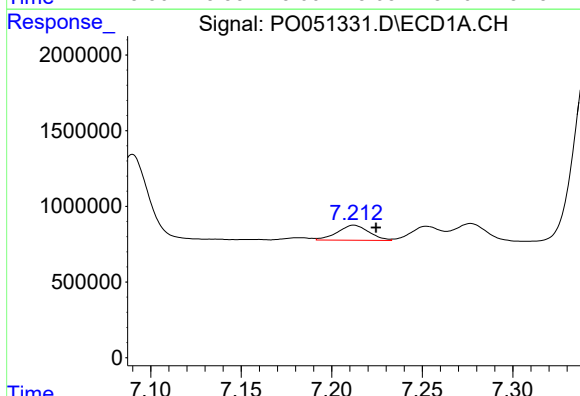


#28 AR-1254-3
 R.T.: 6.929 min
 Delta R.T.: -0.011 min
 Response: 2963315
 Conc: 97.41 ng/ml

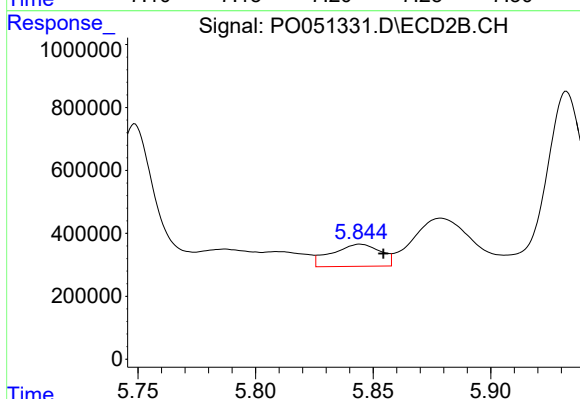
Instrument :
 ECD_O
 ClientSampled :



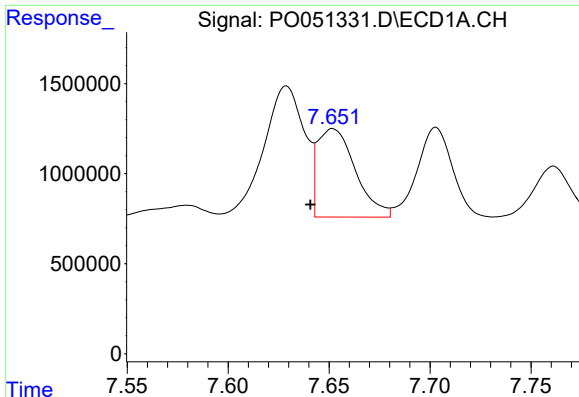
#28 AR-1254-3
 R.T.: 5.640 min
 Delta R.T.: 0.006 min
 Response: 5016747
 Conc: 238.93 ng/ml



#29 AR-1254-4
 R.T.: 7.212 min
 Delta R.T.: -0.012 min
 Response: 1209789
 Conc: 54.22 ng/ml



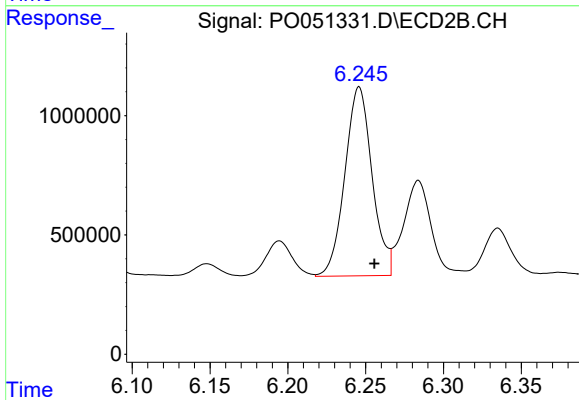
#29 AR-1254-4
 R.T.: 5.845 min
 Delta R.T.: -0.010 min
 Response: 1010150
 Conc: 77.49 ng/ml



#30 AR-1254-5

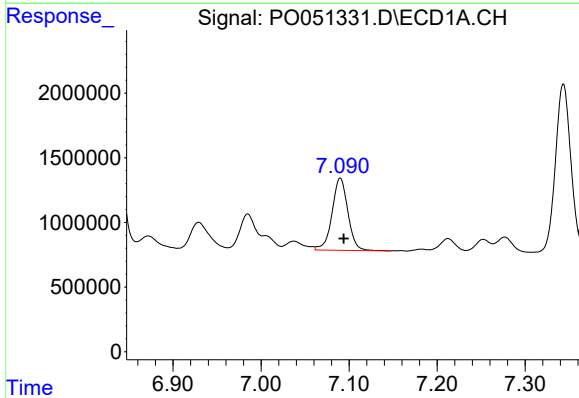
R.T.: 7.652 min
 Delta R.T.: 0.011 min
 Response: 6416893
 Conc: 288.03 ng/ml

Instrument :
 ECD_O
 ClientSampled :



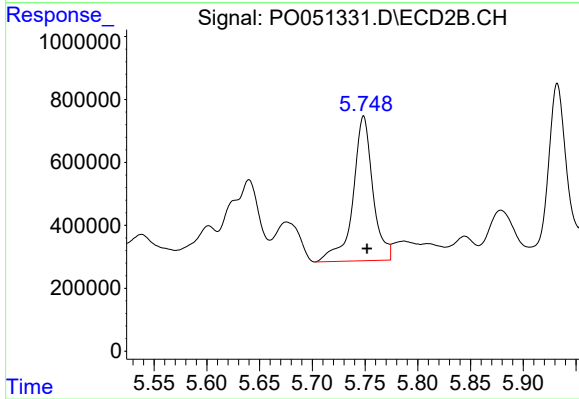
#30 AR-1254-5

R.T.: 6.246 min
 Delta R.T.: -0.010 min
 Response: 9650224
 Conc: 540.73 ng/ml



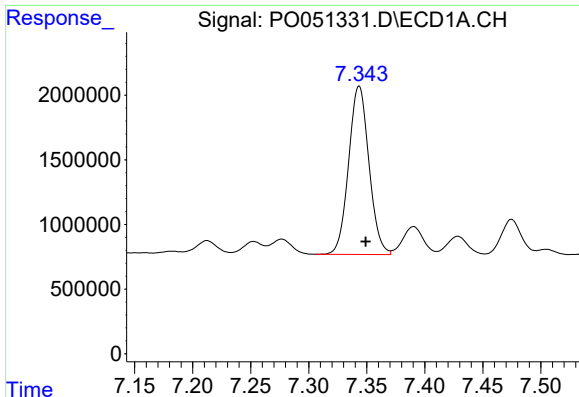
#31 AR-1260-1

R.T.: 7.090 min
 Delta R.T.: -0.004 min
 Response: 6990104
 Conc: 313.59 ng/ml



#31 AR-1260-1

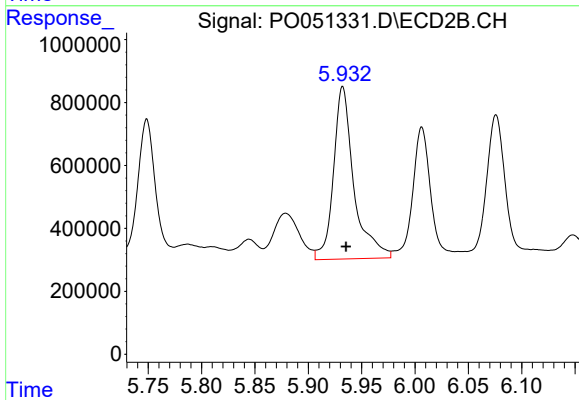
R.T.: 5.749 min
 Delta R.T.: -0.003 min
 Response: 6033337
 Conc: 422.66 ng/ml



#32 AR-1260-2

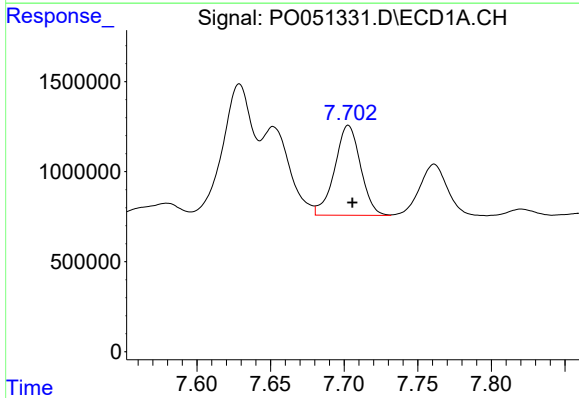
R.T.: 7.343 min
 Delta R.T.: -0.006 min
 Response: 15882969
 Conc: 553.31 ng/ml

Instrument :
 ECD_O
 ClientSampleId :



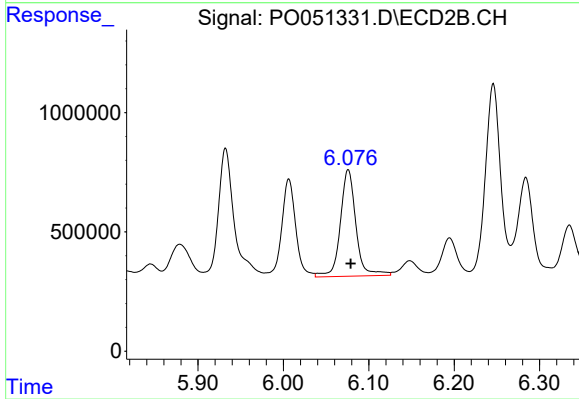
#32 AR-1260-2

R.T.: 5.932 min
 Delta R.T.: -0.003 min
 Response: 7290060
 Conc: 384.95 ng/ml



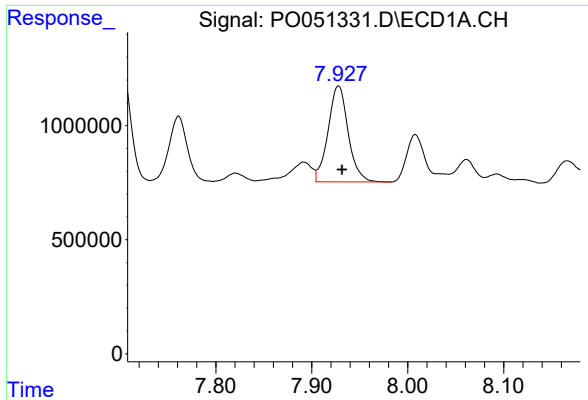
#33 AR-1260-3

R.T.: 7.703 min
 Delta R.T.: -0.003 min
 Response: 6108762
 Conc: 312.48 ng/ml



#33 AR-1260-3

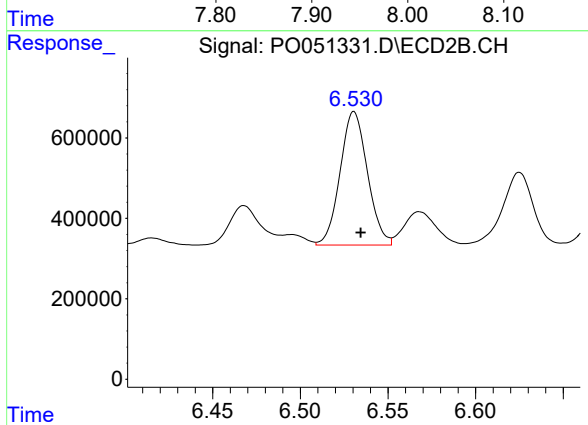
R.T.: 6.076 min
 Delta R.T.: -0.003 min
 Response: 5641430
 Conc: 343.12 ng/ml



#34 AR-1260-4

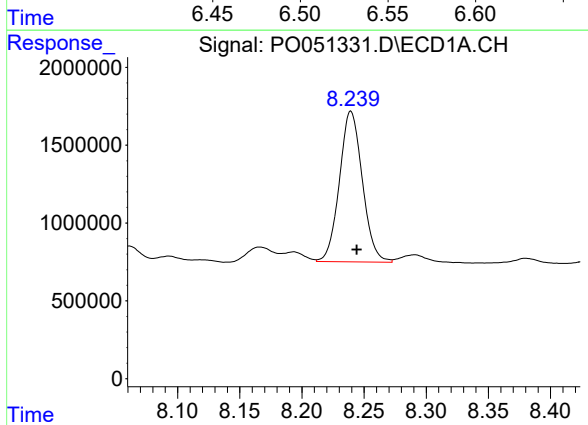
R.T.: 7.928 min
Delta R.T.: -0.004 min
Response: 6128979
Conc: 326.29 ng/ml

Instrument :
ECD_O
ClientSampleId :



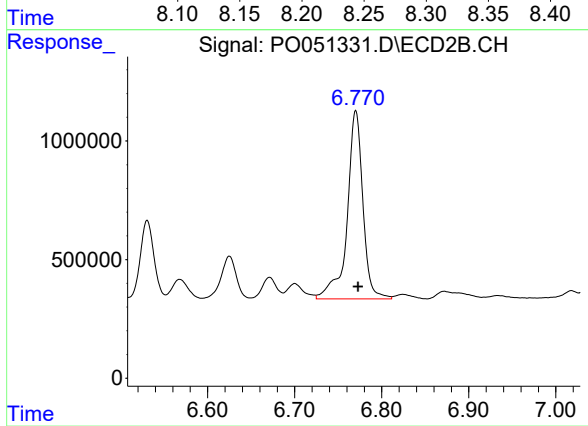
#34 AR-1260-4

R.T.: 6.531 min
Delta R.T.: -0.004 min
Response: 3607113
Conc: 331.57 ng/ml



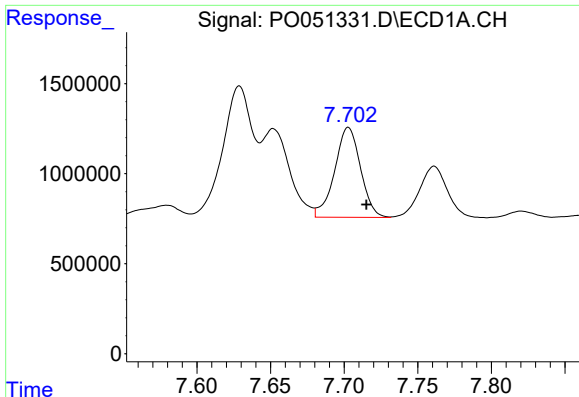
#35 AR-1260-5

R.T.: 8.239 min
Delta R.T.: -0.005 min
Response: 12426586
Conc: 328.73 ng/ml



#35 AR-1260-5

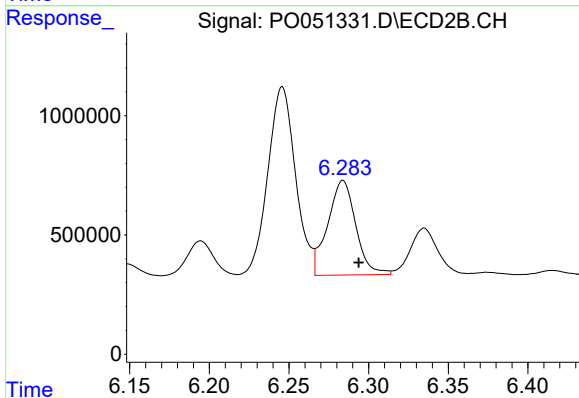
R.T.: 6.770 min
Delta R.T.: -0.003 min
Response: 10002933
Conc: 343.25 ng/ml



#36 AR-1262-1

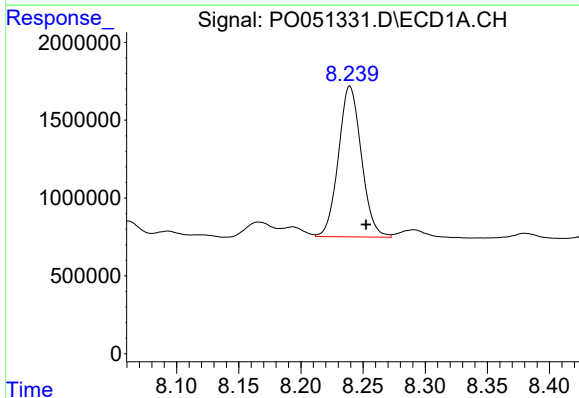
R.T.: 7.703 min
 Delta R.T.: -0.012 min
 Response: 6108762
 Conc: 188.90 ng/ml

Instrument :
 ECD_O
 ClientSampled :



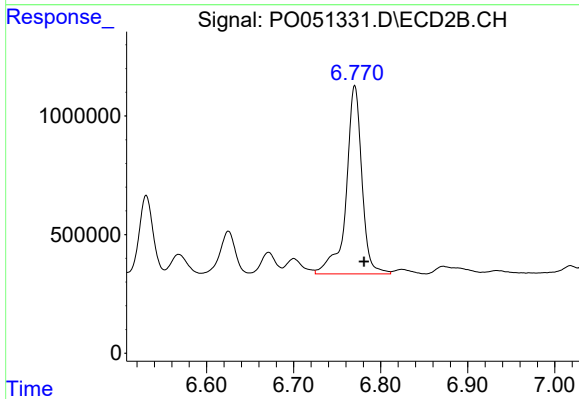
#36 AR-1262-1

R.T.: 6.284 min
 Delta R.T.: -0.010 min
 Response: 4872743
 Conc: 210.39 ng/ml



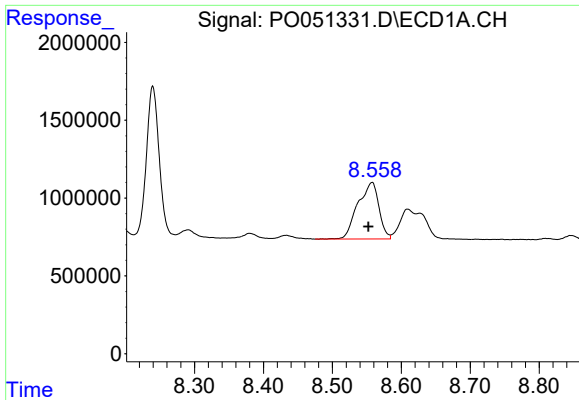
#37 AR-1262-2

R.T.: 8.239 min
 Delta R.T.: -0.013 min
 Response: 12426586
 Conc: 252.60 ng/ml



#37 AR-1262-2

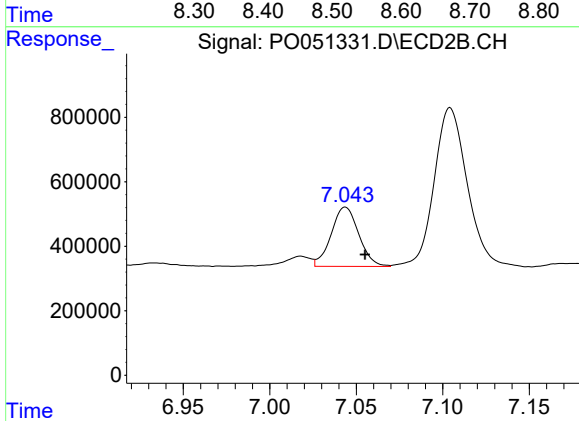
R.T.: 6.770 min
 Delta R.T.: -0.011 min
 Response: 10002933
 Conc: 266.97 ng/ml



#38 AR-1262-3

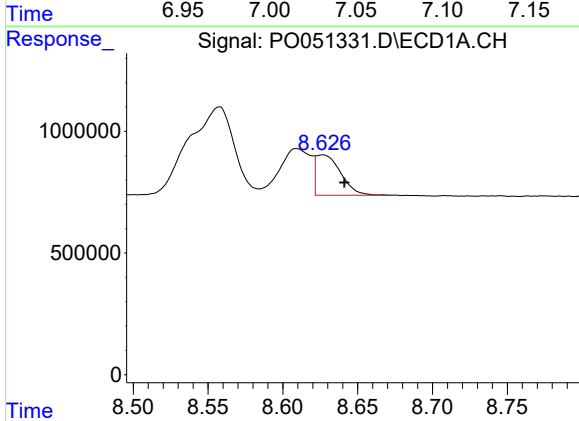
R.T.: 8.558 min
 Delta R.T.: 0.005 min
 Response: 7722568
 Conc: 250.23 ng/ml

Instrument :
 ECD_O
 ClientSampled :



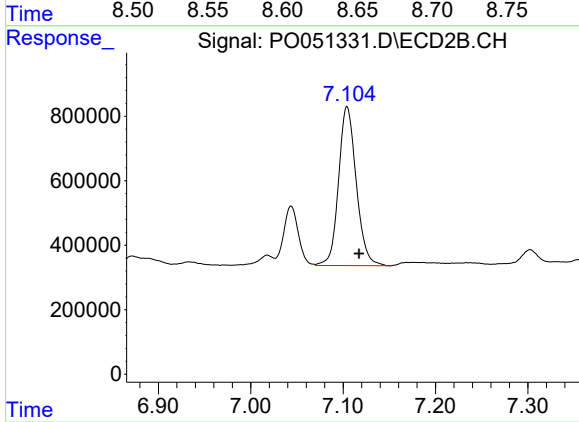
#38 AR-1262-3

R.T.: 7.044 min
 Delta R.T.: -0.011 min
 Response: 2039871
 Conc: 131.86 ng/ml



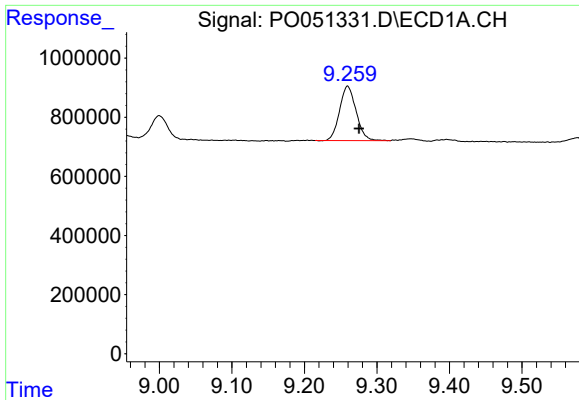
#39 AR-1262-4

R.T.: 8.627 min
 Delta R.T.: -0.015 min
 Response: 1910709
 Conc: 78.49 ng/ml



#39 AR-1262-4

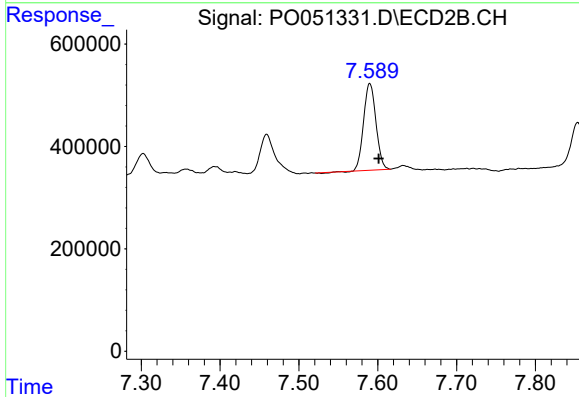
R.T.: 7.104 min
 Delta R.T.: -0.013 min
 Response: 6569390
 Conc: 252.02 ng/ml



#40 AR-1262-5

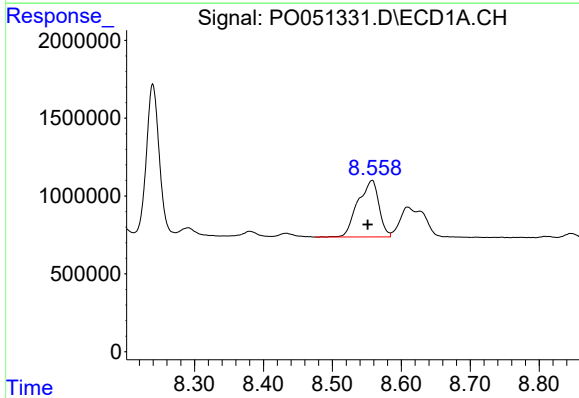
R.T.: 9.259 min
 Delta R.T.: -0.016 min
 Response: 2916118
 Conc: 185.82 ng/ml

Instrument :
 ECD_O
 ClientSampleId :



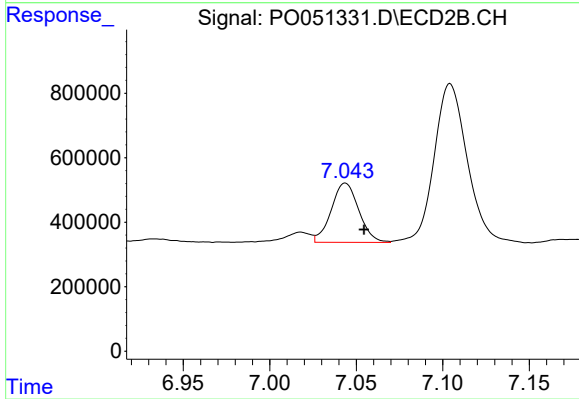
#40 AR-1262-5

R.T.: 7.590 min
 Delta R.T.: -0.011 min
 Response: 1840886
 Conc: 162.82 ng/ml



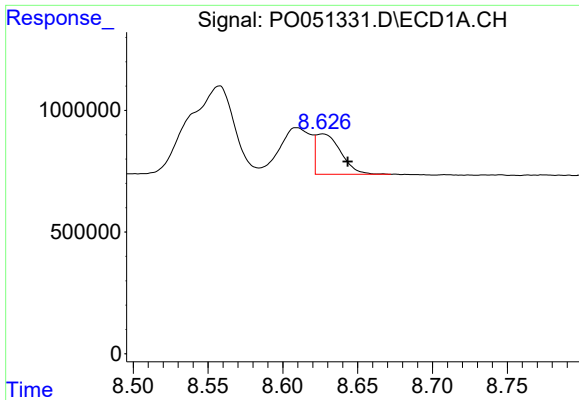
#41 AR-1268-1

R.T.: 8.558 min
 Delta R.T.: 0.006 min
 Response: 7722568
 Conc: 118.34 ng/ml



#41 AR-1268-1

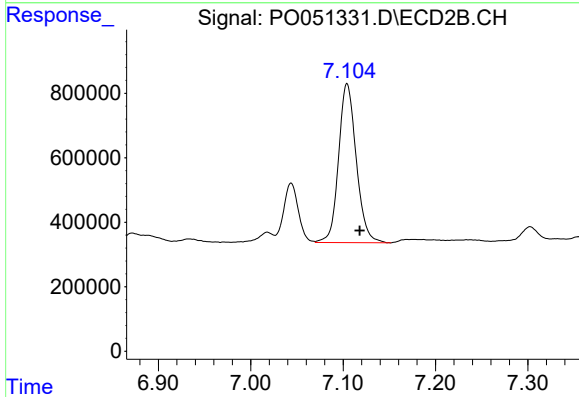
R.T.: 7.044 min
 Delta R.T.: -0.011 min
 Response: 2039871
 Conc: 40.72 ng/ml



#42 AR-1268-2

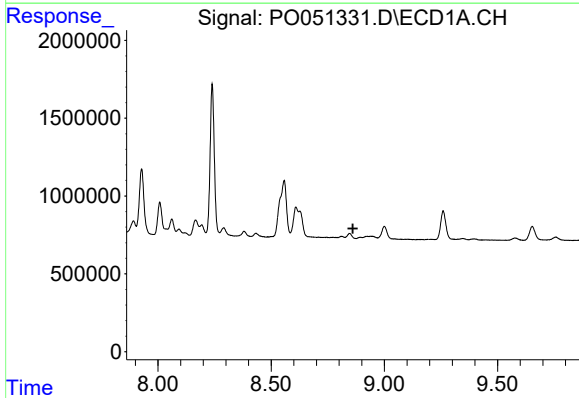
R.T.: 8.627 min
 Delta R.T.: -0.017 min
 Response: 1910709
 Conc: 32.67 ng/ml

Instrument :
 ECD_O
 ClientSampled :



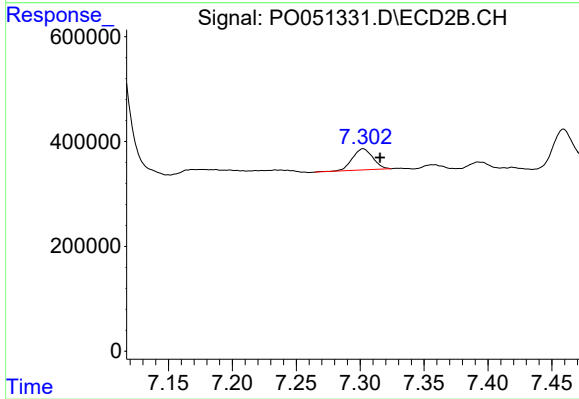
#42 AR-1268-2

R.T.: 7.104 min
 Delta R.T.: -0.014 min
 Response: 6569390
 Conc: 150.72 ng/ml



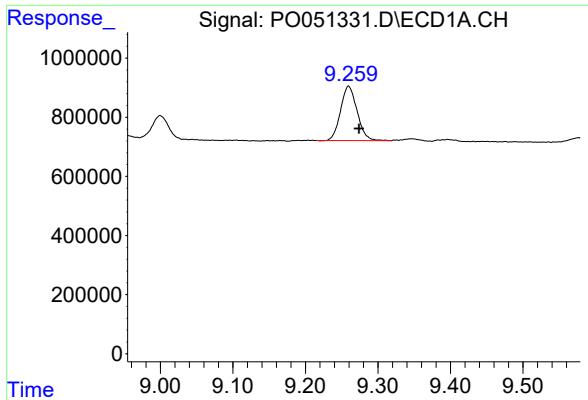
#43 AR-1268-3

R.T.: 0.000 min
 Exp R.T. : 8.861 min
 Response: 0
 Conc: N.D.



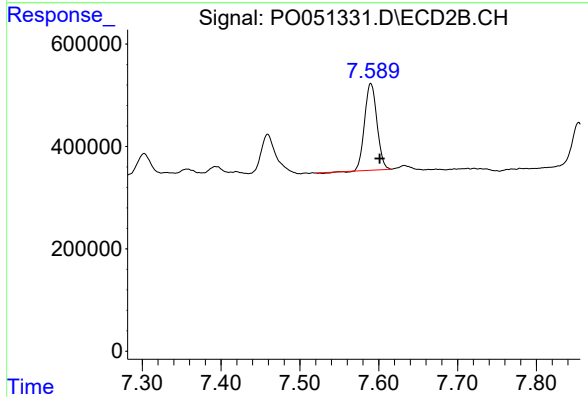
#43 AR-1268-3

R.T.: 7.302 min
 Delta R.T.: -0.013 min
 Response: 444758
 Conc: 11.37 ng/ml

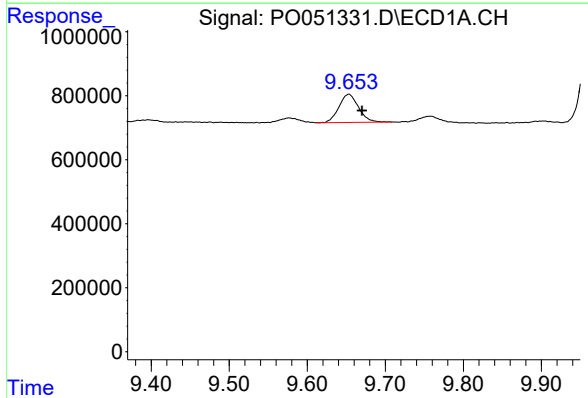


#44 AR-1268-4
 R.T.: 9.259 min
 Delta R.T.: -0.014 min
 Response: 2916118
 Conc: 153.07 ng/ml

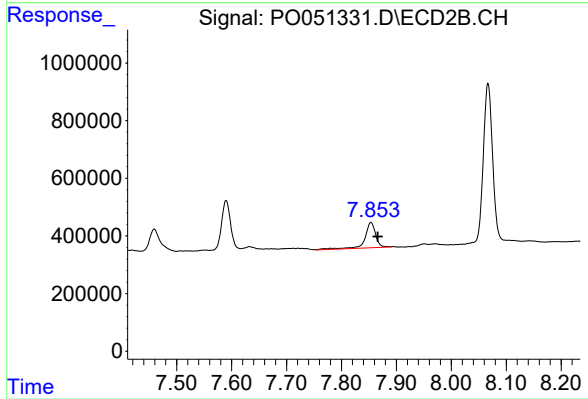
Instrument :
 ECD_O
 ClientSampleId :



#44 AR-1268-4
 R.T.: 7.590 min
 Delta R.T.: -0.011 min
 Response: 1840886
 Conc: 132.83 ng/ml



#45 AR-1268-5
 R.T.: 9.653 min
 Delta R.T.: -0.017 min
 Response: 1543716
 Conc: 10.14 ng/ml



#45 AR-1268-5
 R.T.: 7.854 min
 Delta R.T.: -0.012 min
 Response: 1182406
 Conc: 11.79 ng/ml