

Data Path : Z:\pestpcbsrv\HPCHEM1\ECD\_0\Data\PO111022\  
 Data File : PO090435.D  
 Signal(s) : Signal #1: ECD1A.ch Signal #2: ECD2B.ch  
 Acq On : 10 Nov 2022 18:02  
 Operator : YP/AJ  
 Sample : N5545-01  
 Misc :  
 ALS Vial : 25 Sample Multiplier: 1

Instrument :  
 ECD\_0  
 ClientSampleId :  
 CL-1-110922

Integration File signal 1: autoint1.e  
 Integration File signal 2: autoint2.e  
 Quant Time: Nov 10 21:13:41 2022  
 Quant Method : Z:\pestpcbsrv\HPCHEM1\ECD\_0\methods\PO102722.M  
 Quant Title : GC EXTRACTABLES  
 QLast Update : Fri Oct 28 05:05:44 2022  
 Response via : Initial Calibration  
 Integrator: ChemStation

Volume Inj. : 2 µl  
 Signal #1 Phase : ZB-MR1 Signal #2 Phase: ZB-MR2  
 Signal #1 Info : 30Mx0.32mmx 0.50µ Signal #2 Info : 30M x 0.32mm x 0.25µm

Compound	RT#1	RT#2	Resp#1	Resp#2	ng/ml	ng/ml
-----						
System Monitoring Compounds						
1) SA Tetrachlo...	4.303	3.481	65992762	22180686	20.534	20.870
2) SA Decachlor...	10.052	8.486	49596596	20416161	20.239	19.823

Target Compounds

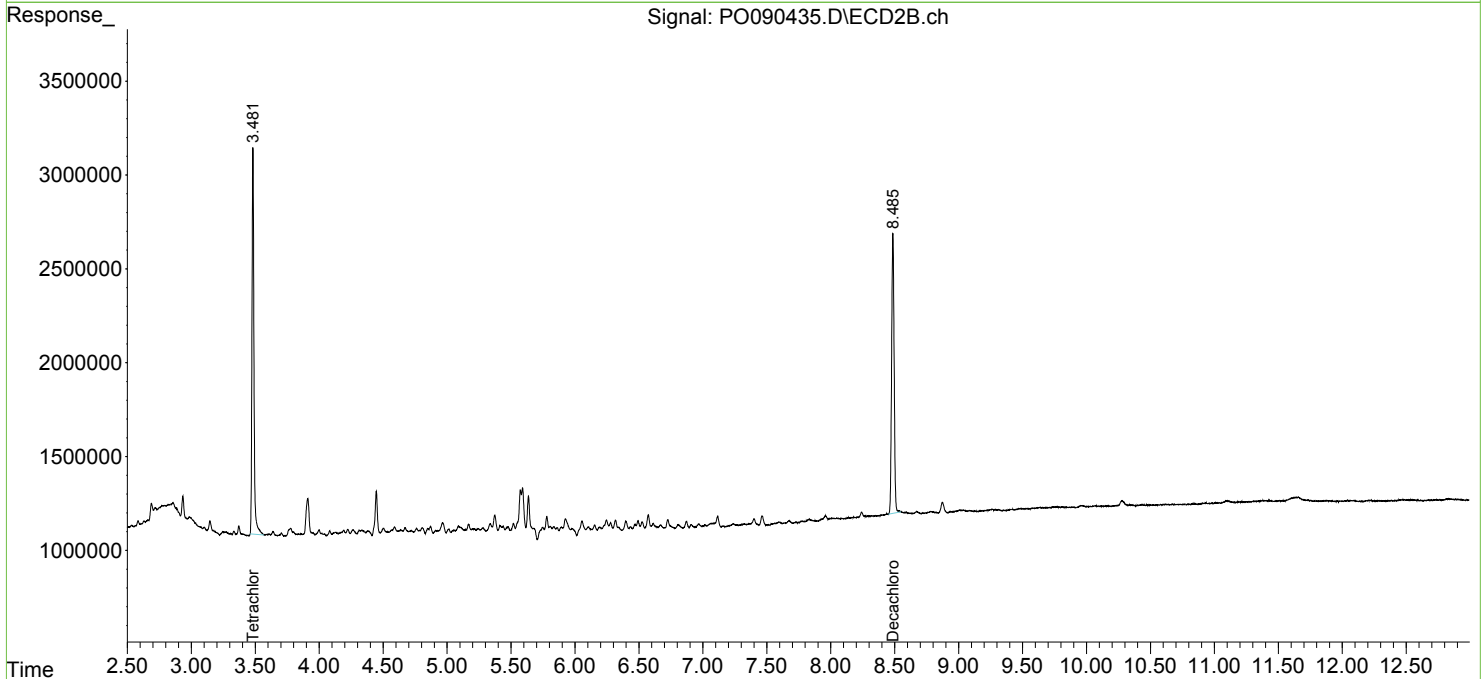
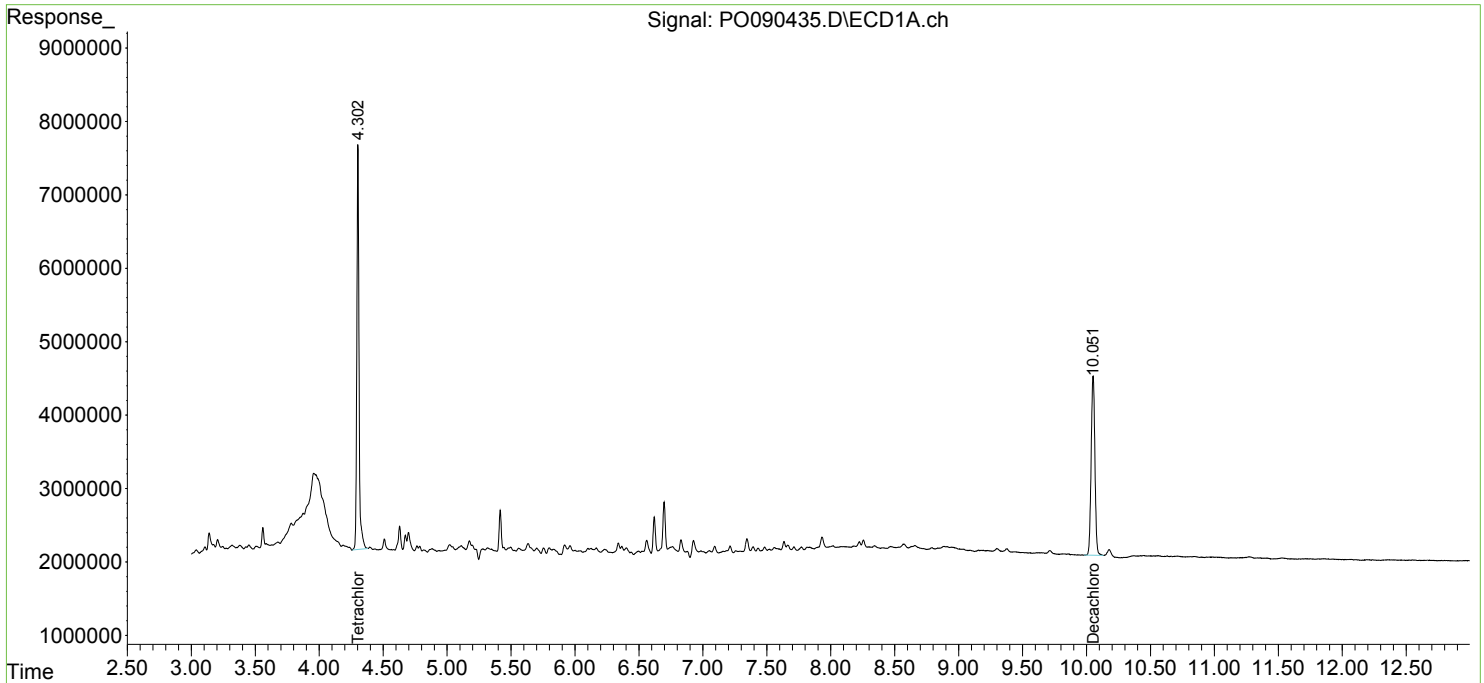
-----  
 (f)=RT Delta > 1/2 Window (#)=Amounts differ by > 25% (m)=manual int.

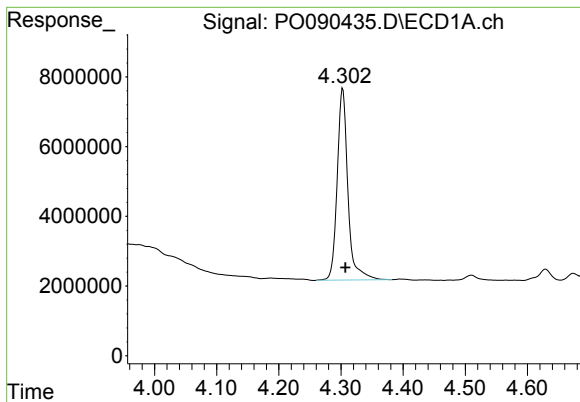
Data Path : Z:\pestpcbsrv\HPCHEM1\ECD\_O\Data\PO111022\  
 Data File : PO090435.D  
 Signal(s) : Signal #1: ECD1A.ch Signal #2: ECD2B.ch  
 Acq On : 10 Nov 2022 18:02  
 Operator : YP/AJ  
 Sample : N5545-01  
 Misc :  
 ALS Vial : 25 Sample Multiplier: 1

Instrument :  
 ECD\_O  
 ClientSampleId :  
 CL-1-110922

Integration File signal 1: autoint1.e  
 Integration File signal 2: autoint2.e  
 Quant Time: Nov 10 21:13:41 2022  
 Quant Method : Z:\pestpcbsrv\HPCHEM1\ECD\_O\methods\PO102722.M  
 Quant Title : GC EXTRACTABLES  
 QLast Update : Fri Oct 28 05:05:44 2022  
 Response via : Initial Calibration  
 Integrator: ChemStation

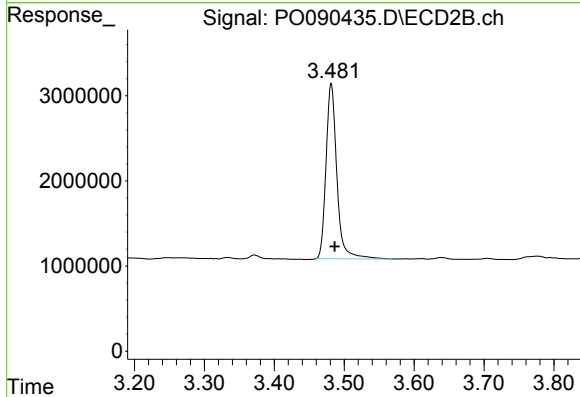
Volume Inj. : 2 µl  
 Signal #1 Phase : ZB-MR1 Signal #2 Phase: ZB-MR2  
 Signal #1 Info : 30Mx0.32mmx 0.50µ Signal #2 Info : 30M x 0.32mm x 0.25µm



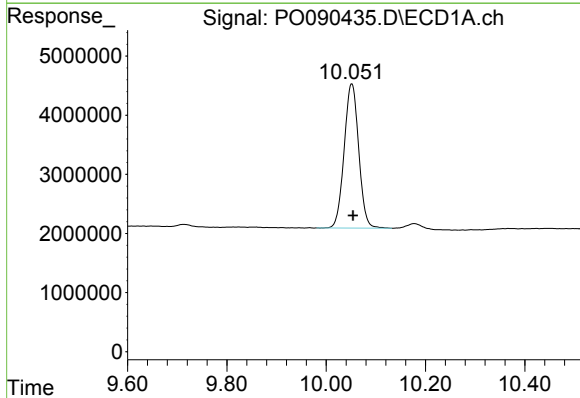


#1 Tetrachloro-m-xylene  
 R.T.: 4.303 min  
 Delta R.T.: -0.004 min  
 Response: 65992762  
 Conc: 20.53 ng/ml

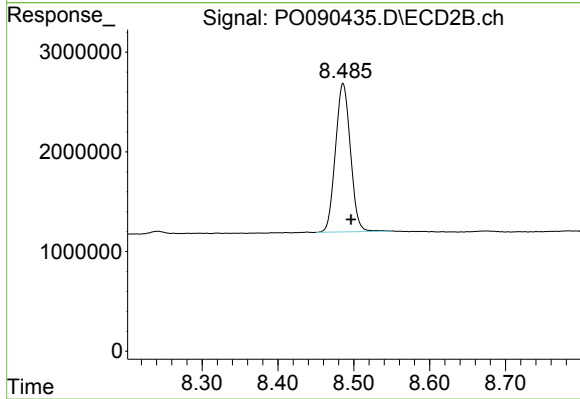
Instrument :  
 ECD\_O  
 ClientSampleId :  
 CL-1-110922



#1 Tetrachloro-m-xylene  
 R.T.: 3.481 min  
 Delta R.T.: -0.005 min  
 Response: 22180686  
 Conc: 20.87 ng/ml



#2 Decachlorobiphenyl  
 R.T.: 10.052 min  
 Delta R.T.: -0.002 min  
 Response: 49596596  
 Conc: 20.24 ng/ml



#2 Decachlorobiphenyl  
 R.T.: 8.486 min  
 Delta R.T.: -0.011 min  
 Response: 20416161  
 Conc: 19.82 ng/ml