

Data Path : Z:\pestpcbsrv\HPCHEM1\ECD_0\Data\PO111022\
 Data File : PO090452.D
 Signal(s) : Signal #1: ECD1A.ch Signal #2: ECD2B.ch
 Acq On : 10 Nov 2022 23:20
 Operator : YP/AJ
 Sample : N5531-17
 Misc :
 ALS Vial : 37 Sample Multiplier: 1

Instrument :
 ECD_0
ClientSampleId :
 SB-26

Manual Integrations
APPROVED

Reviewed By :Yogesh Patel 11/11/2022
 Supervised By :Ankita Jodhani 11/11/2022

Integration File signal 1: autoint1.e
 Integration File signal 2: autoint2.e
 Quant Time: Nov 11 03:54:16 2022
 Quant Method : Z:\pestpcbsrv\HPCHEM1\ECD_0\methods\PO102722.M
 Quant Title : GC EXTRACTABLES
 QLast Update : Fri Oct 28 05:05:44 2022
 Response via : Initial Calibration
 Integrator: ChemStation

Volume Inj. : 2 µl
 Signal #1 Phase : ZB-MR1 Signal #2 Phase: ZB-MR2
 Signal #1 Info : 30Mx0.32mmx 0.50µ Signal #2 Info : 30M x 0.32mm x 0.25µm

Compound	RT#1	RT#2	Resp#1	Resp#2	ng/ml	ng/ml

System Monitoring Compounds						
1) SA Tetrachlo...	4.303	3.481	70831995	23528287	22.039	22.138
2) SA Decachlor...	10.050	8.485	50462823	20232229	20.592m	19.644m
Target Compounds						
26) L6 AR-1254-1	6.334	5.371	5634829	2338734	48.619m	39.703
27) L6 AR-1254-2	6.558	5.519	5942759	1727163	34.167m	32.235
28) L6 AR-1254-3	6.927	5.923	7792732	2169087	44.888m	26.171m#
29) L6 AR-1254-4	7.213	6.154	3610039	768243	28.321m	15.469 #
30) L6 AR-1254-5	7.637	6.573	6256667	4143787	44.418	55.342

(f)=RT Delta > 1/2 Window (#)=Amounts differ by > 25% (m)=manual int.

Data Path : Z:\pestpcbsrv\HPCHEM1\ECD_O\Data\PO111022\
 Data File : PO090452.D
 Signal(s) : Signal #1: ECD1A.ch Signal #2: ECD2B.ch
 Acq On : 10 Nov 2022 23:20
 Operator : YP/AJ
 Sample : N5531-17
 Misc :
 ALS Vial : 37 Sample Multiplier: 1

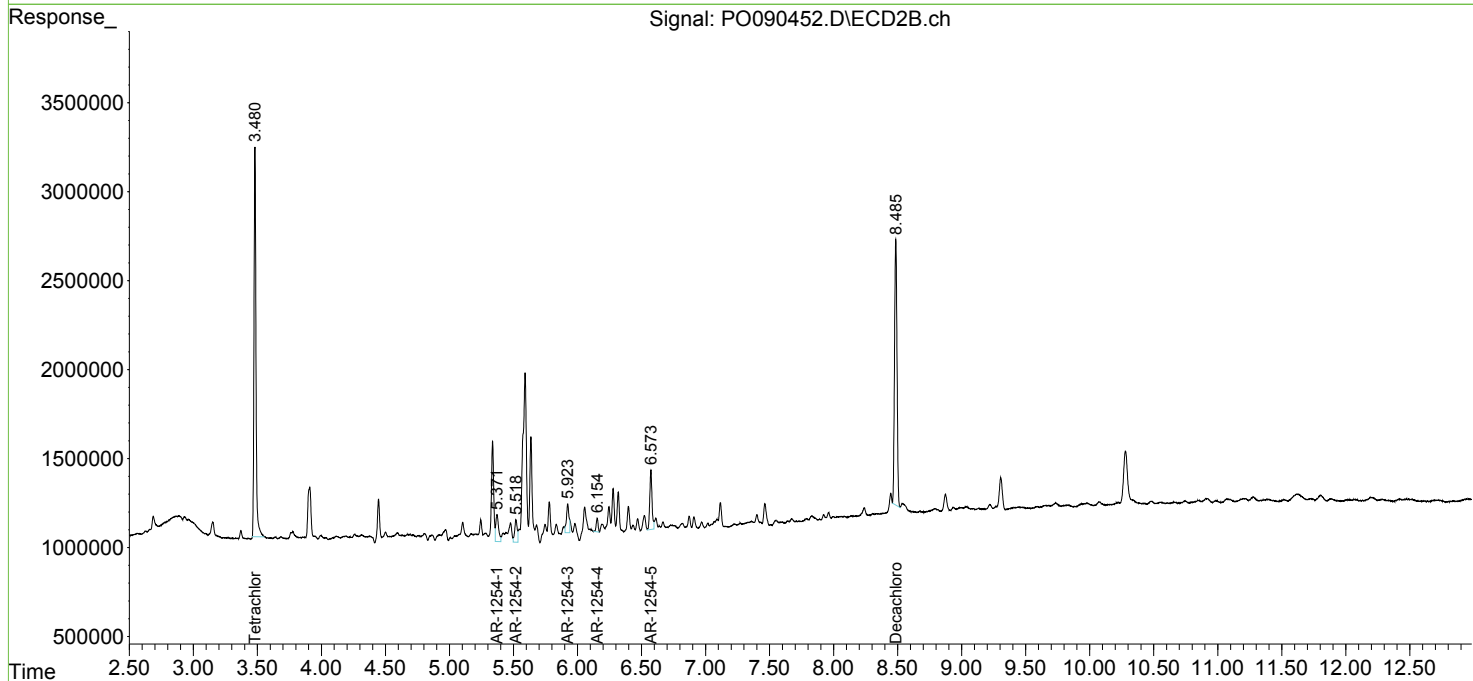
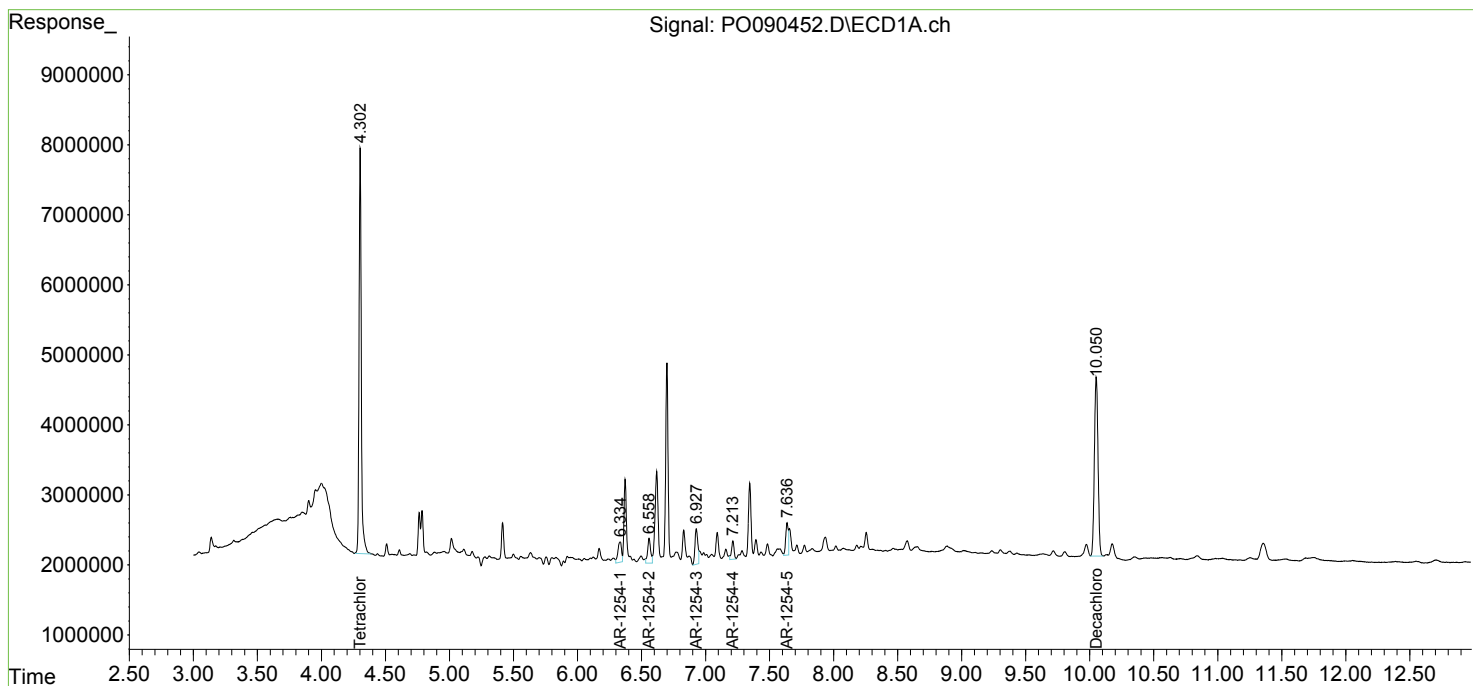
Instrument :
 ECD_O
 ClientSampleId :
 SB-26

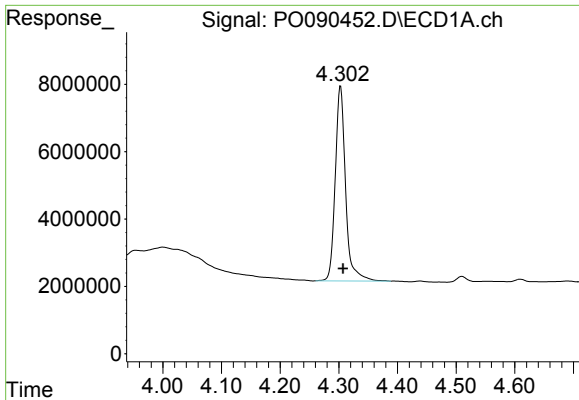
Manual Integrations
 APPROVED

Reviewed By :Yogesh Patel 11/11/2022
 Supervised By :Ankita Jodhani 11/11/2022

Integration File signal 1: autoint1.e
 Integration File signal 2: autoint2.e
 Quant Time: Nov 11 03:54:16 2022
 Quant Method : Z:\pestpcbsrv\HPCHEM1\ECD_O\methods\PO102722.M
 Quant Title : GC EXTRACTABLES
 QLast Update : Fri Oct 28 05:05:44 2022
 Response via : Initial Calibration
 Integrator: ChemStation

Volume Inj. : 2 µl
 Signal #1 Phase : ZB-MR1 Signal #2 Phase: ZB-MR2
 Signal #1 Info : 30Mx0.32mmx 0.50µ Signal #2 Info : 30M x 0.32mm x 0.25µm



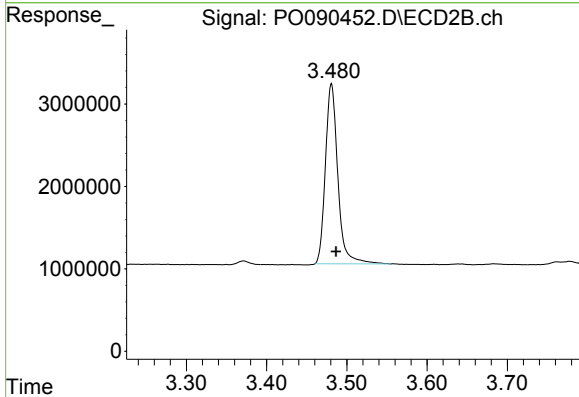


#1 Tetrachloro-m-xylene
 R.T.: 4.303 min
 Delta R.T.: -0.004 min
 Response: 70831995
 Conc: 22.04 ng/ml

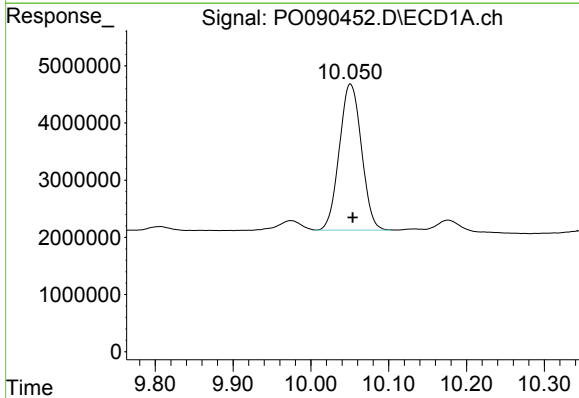
Instrument :
 ECD_O
 ClientSampleId :
 SB-26

Manual Integrations
 APPROVED

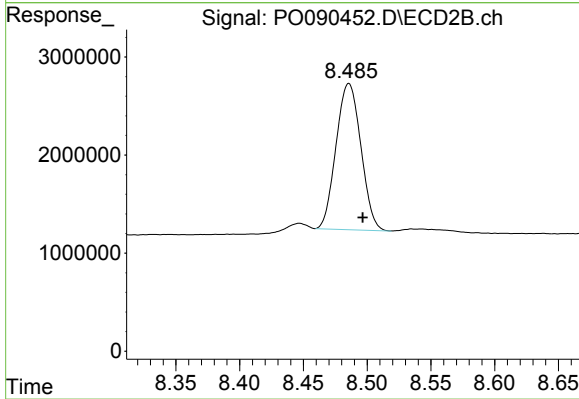
Reviewed By :Yogesh Patel 11/11/2022
 Supervised By :Ankita Jodhani 11/11/2022



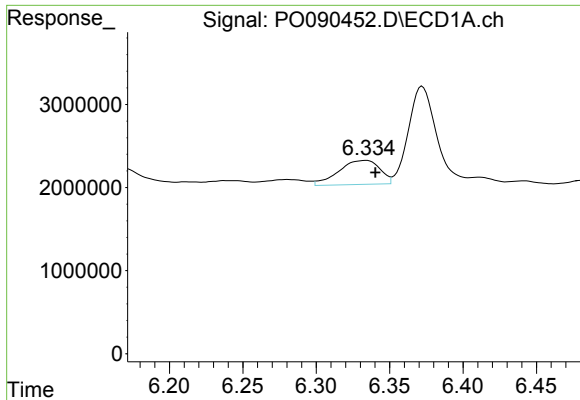
#1 Tetrachloro-m-xylene
 R.T.: 3.481 min
 Delta R.T.: -0.006 min
 Response: 23528287
 Conc: 22.14 ng/ml



#2 Decachlorobiphenyl
 R.T.: 10.050 min
 Delta R.T.: -0.004 min
 Response: 50462823
 Conc: 20.59 ng/ml m



#2 Decachlorobiphenyl
 R.T.: 8.485 min
 Delta R.T.: -0.011 min
 Response: 20232229
 Conc: 19.64 ng/ml m



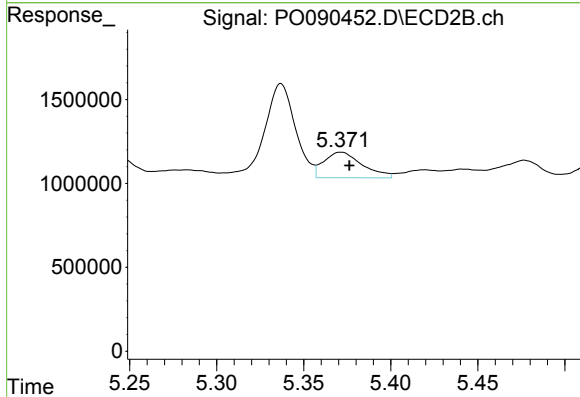
#26 AR-1254-1

R.T.: 6.334 min
 Delta R.T.: -0.006 min
 Response: 5634829
 Conc: 48.62 ng/ml

Instrument :
 ECD_O
 ClientSampleId :
 SB-26

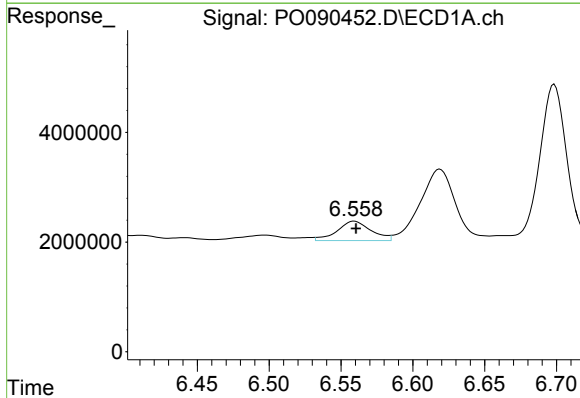
Manual Integrations
 APPROVED

Reviewed By :Yogesh Patel 11/11/2022
 Supervised By :Ankita Jodhani 11/11/2022



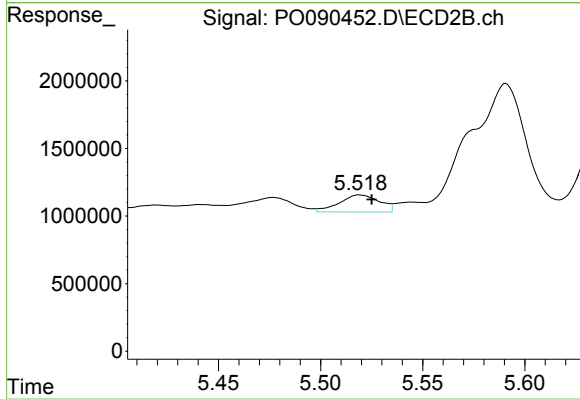
#26 AR-1254-1

R.T.: 5.371 min
 Delta R.T.: -0.005 min
 Response: 2338734
 Conc: 39.70 ng/ml



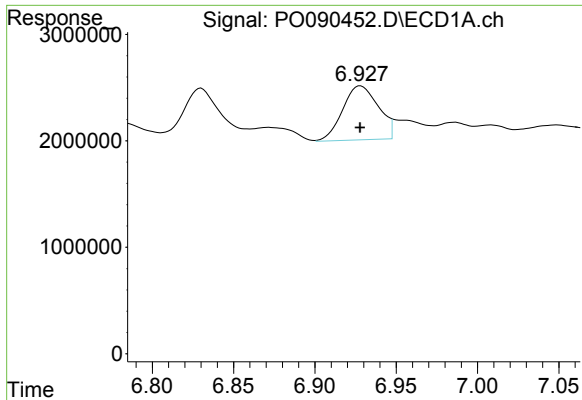
#27 AR-1254-2

R.T.: 6.558 min
 Delta R.T.: -0.002 min
 Response: 5942759
 Conc: 34.17 ng/ml m



#27 AR-1254-2

R.T.: 5.518 min
 Delta R.T.: -0.006 min
 Response: 1727163
 Conc: 32.24 ng/ml



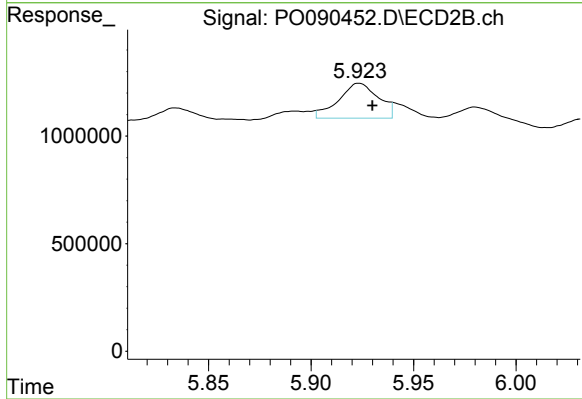
#28 AR-1254-3

R.T.: 6.927 min
 Delta R.T.: 0.000 min
 Response: 7792732
 Conc: 44.89 ng/ml

Instrument :
 ECD_O
 ClientSampleId :
 SB-26

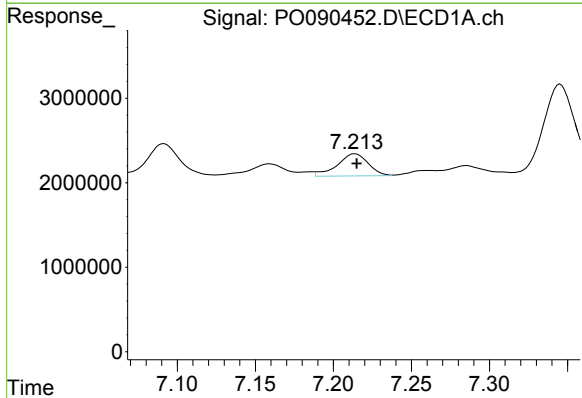
Manual Integrations
 APPROVED

Reviewed By :Yogesh Patel 11/11/2022
 Supervised By :Ankita Jodhani 11/11/2022



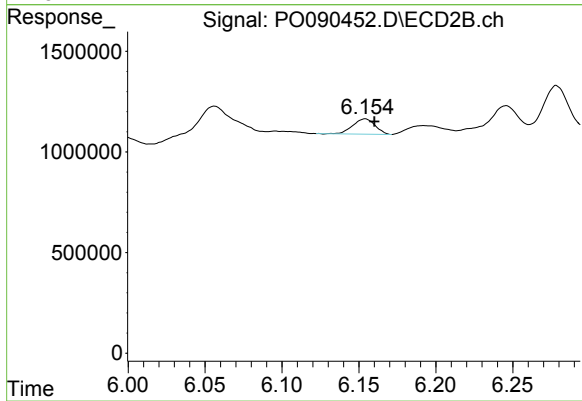
#28 AR-1254-3

R.T.: 5.923 min
 Delta R.T.: -0.007 min
 Response: 2169087
 Conc: 26.17 ng/ml m



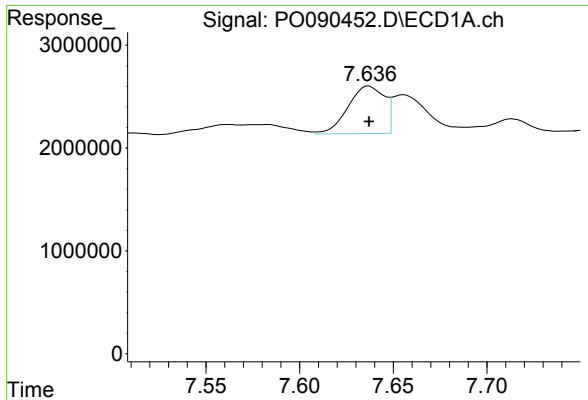
#29 AR-1254-4

R.T.: 7.213 min
 Delta R.T.: -0.002 min
 Response: 3610039
 Conc: 28.32 ng/ml m



#29 AR-1254-4

R.T.: 6.154 min
 Delta R.T.: -0.006 min
 Response: 768243
 Conc: 15.47 ng/ml



#30 AR-1254-5

R.T.: 7.637 min
 Delta R.T.: 0.000 min
 Response: 6256667
 Conc: 44.42 ng/ml

Instrument :

ECD_O

ClientSampleId :

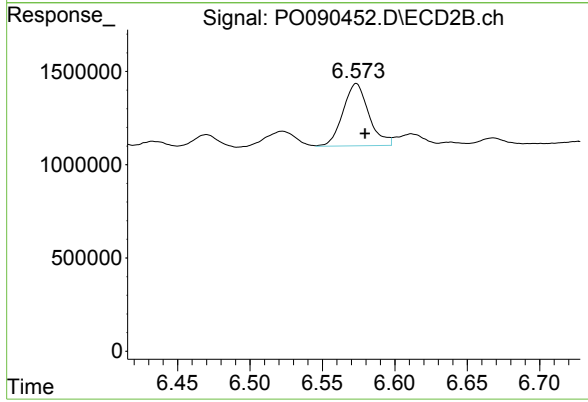
SB-26

Manual Integrations

APPROVED

Reviewed By :Yogesh Patel 11/11/2022

Supervised By :Ankita Jodhani 11/11/2022



#30 AR-1254-5

R.T.: 6.573 min
 Delta R.T.: -0.006 min
 Response: 4143787
 Conc: 55.34 ng/ml