

Data Path : Z:\pestpcbsrv\HPCHEM1\ECD_0\Data\P0111023\
 Data File : P0099611.D
 Signal(s) : Signal #1: ECD1A.ch Signal #2: ECD2B.ch
 Acq On : 10 Nov 2023 23:12
 Operator : YP/AJ
 Sample : I.BLK
 Misc :
 ALS Vial : 2 Sample Multiplier: 1

Instrument :
 ECD_0
 ClientSampleId :

Integration File signal 1: autoint1.e
 Integration File signal 2: autoint2.e
 Quant Time: Nov 11 00:04:53 2023
 Quant Method : Z:\pestpcbsrv\HPCHEM1\ECD_0\methods\P0110923.M
 Quant Title : GC EXTRACTABLES
 QLast Update : Fri Nov 10 11:13:12 2023
 Response via : Initial Calibration
 Integrator: ChemStation

Volume Inj. : 2 µl
 Signal #1 Phase : ZB-MR2 Signal #2 Phase: ZB-MR2
 Signal #1 Info : 30Mx0.32mmx 0.50µ Signal #2 Info : 30M x 0.32mm x 0.25µm

Compound	RT#1	RT#2	Resp#1	Resp#2	ng/ml	ng/ml

System Monitoring Compounds						
1) SA Tetrachlo...	4.492	3.722	36214379	25270330	21.037	20.844
2) SA Decachlor...	10.377	8.836	18369259	20377772	28.778	27.743
Target Compounds						
3) L1 AR-1016-1	5.680	4.829	85130	241591	2.191	8.984 #
4) L1 AR-1016-2	5.705	4.841	103794	139046	1.621	3.815 #
5) L1 AR-1016-3	5.770	5.044	132429	193885	3.056	9.674 #
6) L1 AR-1016-4	5.873	5.078	134356	82169	4.323	4.945
7) L1 AR-1016-5	6.169	5.297	40001	458811	1.315	22.210 #
8) L2 AR-1221-1	4.674	3.956	154985	132904	8.137	9.071
9) L2 AR-1221-2	4.804	4.027	755873	359706	53.659	39.276 #
10) L2 AR-1221-3	4.863	4.131	60255	15511	1.453	0.501 #
11) L3 AR-1232-1	4.863	4.131	60255	15511	1.789	0.600 #
12) L3 AR-1232-2	5.403	4.841	12219	139046	0.732	8.027 #
13) L3 AR-1232-3	5.705	5.044	103794	193885	3.659	22.077 #
14) L3 AR-1232-4	5.873	5.105	134356	107926	9.961	13.306 #
15) L3 AR-1232-5	5.958	5.297	270383	458811	23.583	53.637 #
16) L4 AR-1242-1	5.680	4.829	85130	241591	2.715	10.918 #
17) L4 AR-1242-2	5.705	4.841	103794	139046	2.012	4.670 #
18) L4 AR-1242-3	5.763	5.044	553279	193885	15.875	11.752 #
19) L4 AR-1242-4	5.873	5.105	134356	107926	5.313	6.406
20) L4 AR-1242-5	6.619	5.644	209758	358282	10.252	20.524 #
21) L5 AR-1248-1	5.680	4.829	85130	241591	3.605	13.994 #
22) L5 AR-1248-2	5.958	5.078	270383	82169	6.954	3.490 #
23) L5 AR-1248-3	6.169	5.105	40001	107926	0.964	4.357 #
24) L5 AR-1248-4	6.585	5.297	199499	458811	5.194	16.641 #
25) L5 AR-1248-5	6.619	5.672	209758	531136	5.532	23.276 #
26) L6 AR-1254-1	6.550	5.644	660221	358282	14.670	9.850 #
27) L6 AR-1254-2	6.772	5.789	95750	521028	1.518	16.039 #
28) L6 AR-1254-3	7.138	6.153f	629372	195097	10.806	3.598 #
29) L6 AR-1254-4	7.411	6.435	37887	357957	1.112	12.711 #
30) L6 AR-1254-5	7.829	6.866	158564	134394	4.052	2.758 #
31) L7 AR-1260-1	7.316	6.343	44801	75518	0.901	1.751 #
32) L7 AR-1260-2	7.582	6.538	278723	23194	5.457	0.495 #
33) L7 AR-1260-3	7.917	6.694	210346	20231	5.867	0.443 #
34) L7 AR-1260-4	8.161	7.210f	72725	317271	1.842	8.634 #
35) L7 AR-1260-5	8.485	7.412	94532	119112	1.578	1.634
36) L8 AR-1262-1	7.829	6.866	158564	134394	5.020	5.467
37) L8 AR-1262-2	8.485	7.210f	94532	317271	1.278	6.400 #
38) L8 AR-1262-3	8.813	7.694	18116	65705	0.353	1.777 #
39) L8 AR-1262-4	8.915	7.760	131776	160602	3.390	2.500 #
40) L8 AR-1262-5	9.603	8.261	109386	84448	5.147	3.073 #
41) L9 AR-1268-1	8.813	7.694	18116	65705	0.180	0.598 #

Data Path : Z:\pestpcbsrv\HPCHEM1\ECD_0\Data\P0111023\
 Data File : P0099611.D
 Signal(s) : Signal #1: ECD1A.ch Signal #2: ECD2B.ch
 Acq On : 10 Nov 2023 23:12
 Operator : YP/AJ
 Sample : I.BLK
 Misc :
 ALS Vial : 2 Sample Multiplier: 1

Instrument :
 ECD_0
 ClientSampleId :

Integration File signal 1: autoint1.e
 Integration File signal 2: autoint2.e
 Quant Time: Nov 11 00:04:53 2023
 Quant Method : Z:\pestpcbsrv\HPCHEM1\ECD_0\methods\P0110923.M
 Quant Title : GC EXTRACTABLES
 QLast Update : Fri Nov 10 11:13:12 2023
 Response via : Initial Calibration
 Integrator: ChemStation

Volume Inj. : 2 µl
 Signal #1 Phase : ZB-MR1 Signal #2 Phase: ZB-MR2
 Signal #1 Info : 30Mx0.32mmx 0.50µ Signal #2 Info : 30M x 0.32mm x 0.25µm

	Compound	RT#1	RT#2	Resp#1	Resp#2	ng/ml	ng/ml
42)	L9 AR-1268-2	8.915	7.760	131776	160602	1.553	1.629
43)	L9 AR-1268-3	9.150	7.971	84655	100639	0.993	1.063
44)	L9 AR-1268-4	9.603	8.261	109386	84448	4.499	2.819 #
45)	L9 AR-1268-5	10.021	8.567	304922	261341	1.435	1.038 #

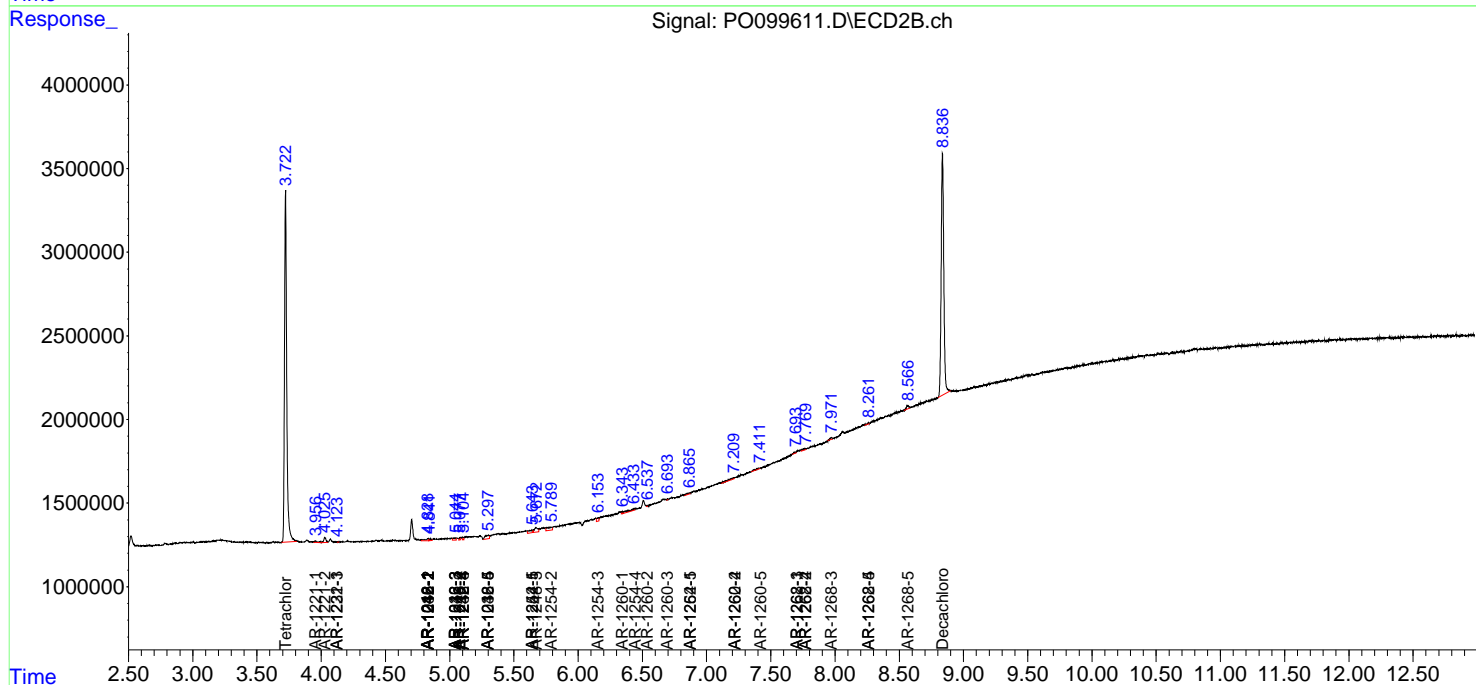
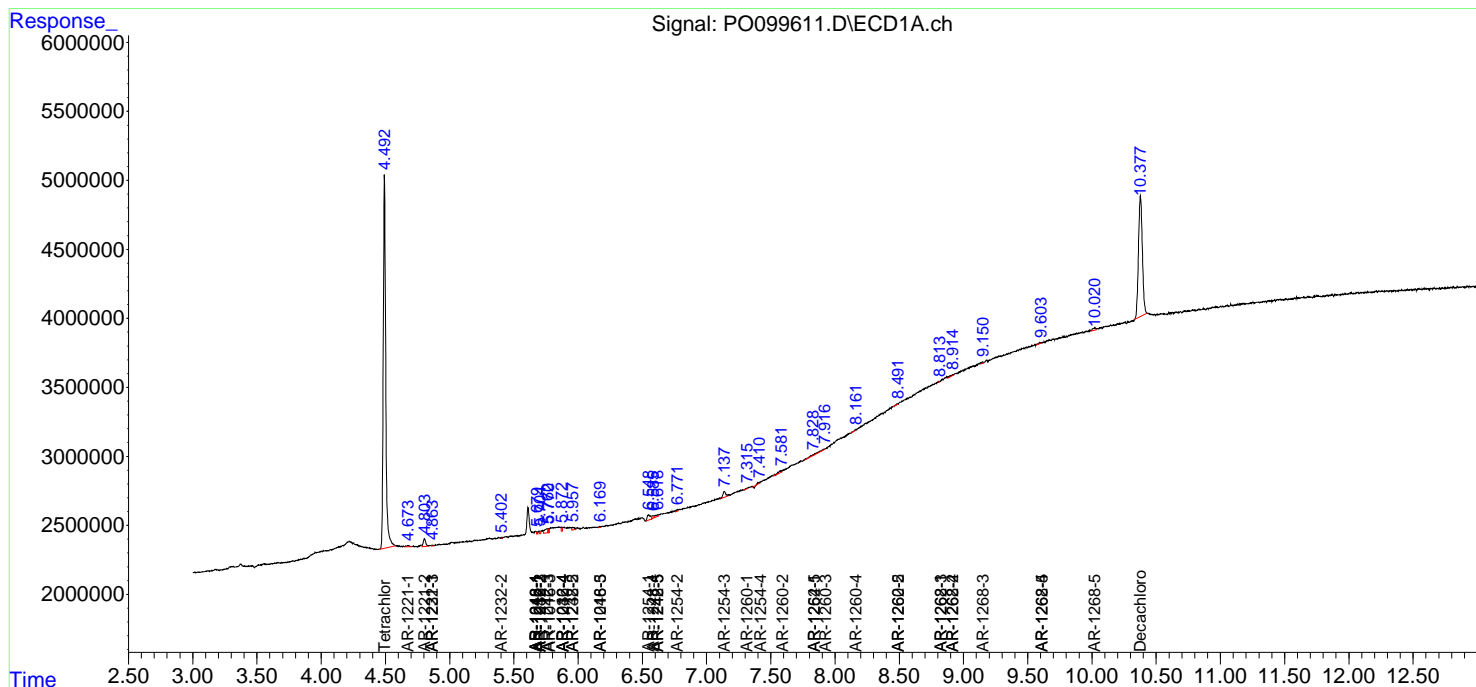
(f)=RT Delta > 1/2 Window (#)=Amounts differ by > 25% (m)=manual int.

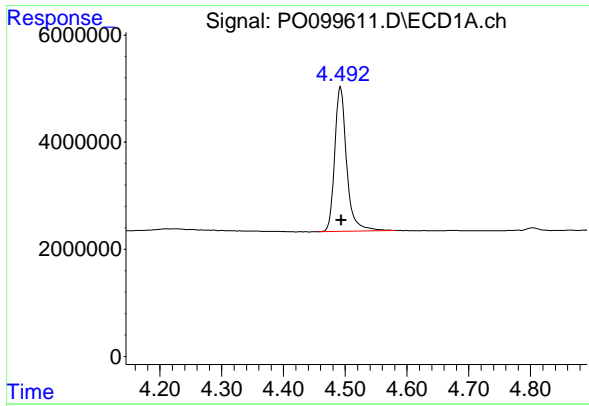
Data Path : Z:\pestpcbsrv\HPCHEM1\ECD_O\Data\PO111023\
 Data File : PO099611.D
 Signal(s) : Signal #1: ECD1A.ch Signal #2: ECD2B.ch
 Acq On : 10 Nov 2023 23:12
 Operator : YP/AJ
 Sample : I.BLK
 Misc :
 ALS Vial : 2 Sample Multiplier: 1

Instrument :
 ECD_O
 ClientSampleId :

Integration File signal 1: autoint1.e
 Integration File signal 2: autoint2.e
 Quant Time: Nov 11 00:04:53 2023
 Quant Method : Z:\pestpcbsrv\HPCHEM1\ECD_O\methods\PO110923.M
 Quant Title : GC EXTRACTABLES
 QLast Update : Fri Nov 10 11:13:12 2023
 Response via : Initial Calibration
 Integrator: ChemStation

Volume Inj. : 2 µl
 Signal #1 Phase : ZB-MR1 Signal #2 Phase: ZB-MR2
 Signal #1 Info : 30Mx0.32mmx 0.50µm Signal #2 Info : 30M x 0.32mm x 0.25µm

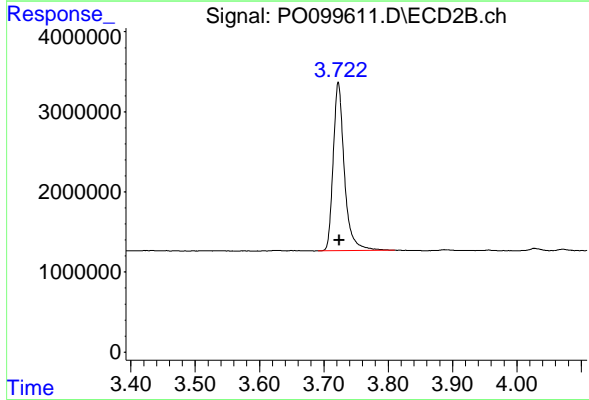




#1 Tetrachloro-m-xylene

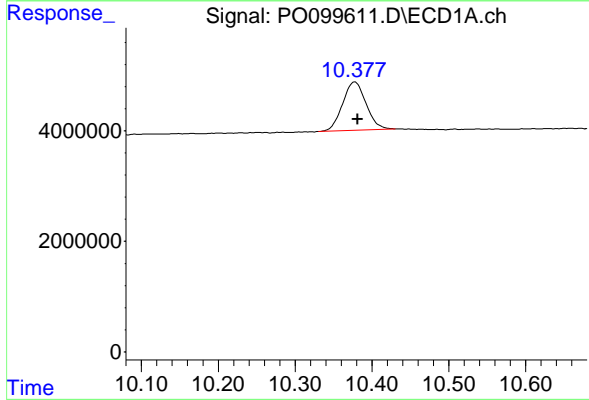
R.T.: 4.492 min
 Delta R.T.: -0.002 min
 Response: 36214379
 Conc: 21.04 ng/ml

Instrument :
 ECD_O
 ClientSampleId :



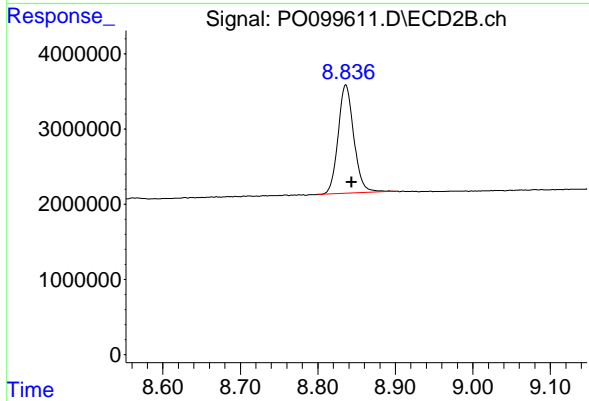
#1 Tetrachloro-m-xylene

R.T.: 3.722 min
 Delta R.T.: -0.002 min
 Response: 25270330
 Conc: 20.84 ng/ml



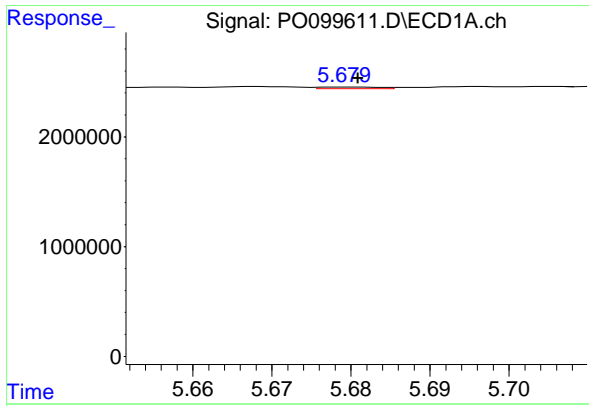
#2 Decachlorobiphenyl

R.T.: 10.377 min
 Delta R.T.: -0.004 min
 Response: 18369259
 Conc: 28.78 ng/ml



#2 Decachlorobiphenyl

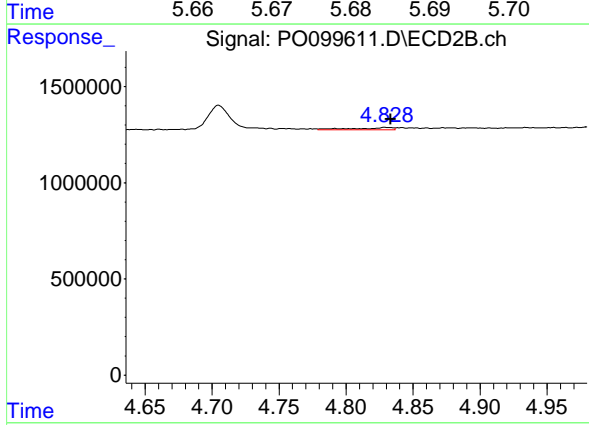
R.T.: 8.836 min
 Delta R.T.: -0.008 min
 Response: 20377772
 Conc: 27.74 ng/ml



#3 AR-1016-1

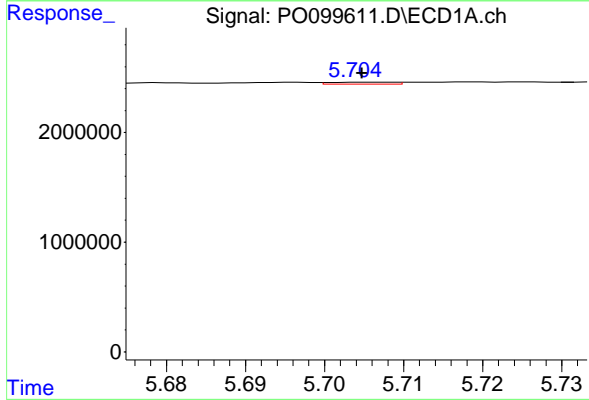
R.T.: 5.680 min
 Delta R.T.: -0.001 min
 Response: 85130
 Conc: 2.19 ng/ml

Instrument :
 ECD_O
 ClientSampleId :



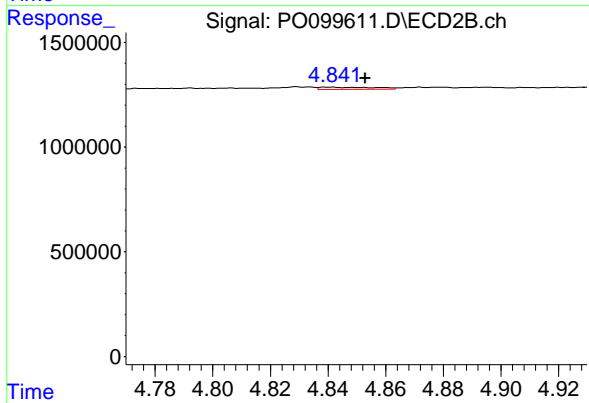
#3 AR-1016-1

R.T.: 4.829 min
 Delta R.T.: -0.004 min
 Response: 241591
 Conc: 8.98 ng/ml



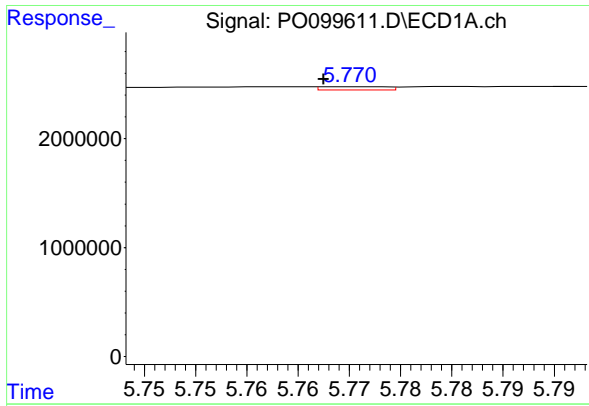
#4 AR-1016-2

R.T.: 5.705 min
 Delta R.T.: 0.000 min
 Response: 103794
 Conc: 1.62 ng/ml



#4 AR-1016-2

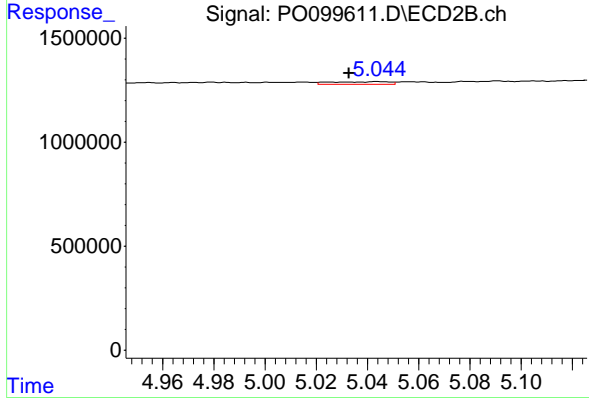
R.T.: 4.841 min
 Delta R.T.: -0.012 min
 Response: 139046
 Conc: 3.81 ng/ml



#5 AR-1016-3

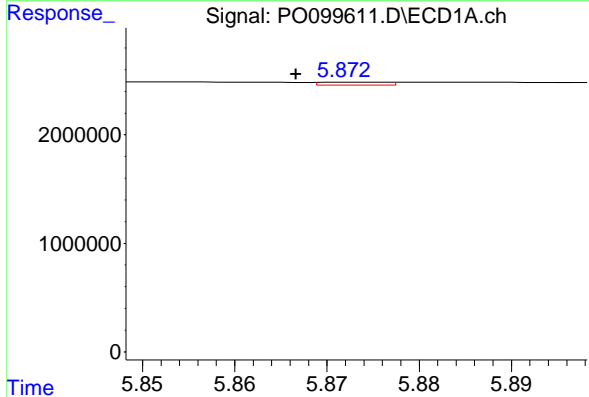
R.T.: 5.770 min
 Delta R.T.: 0.003 min
 Response: 132429
 Conc: 3.06 ng/ml

Instrument :
 ECD_O
 ClientSampleId :



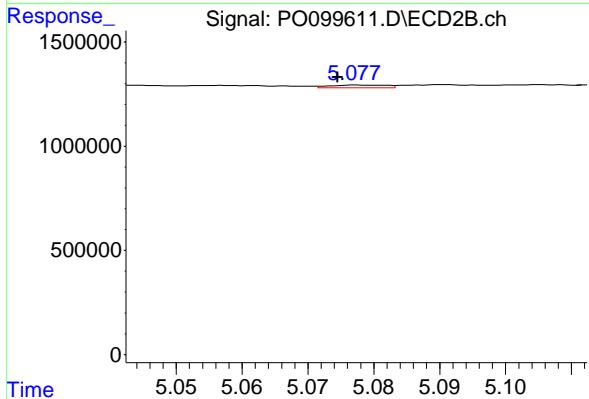
#5 AR-1016-3

R.T.: 5.044 min
 Delta R.T.: 0.011 min
 Response: 193885
 Conc: 9.67 ng/ml



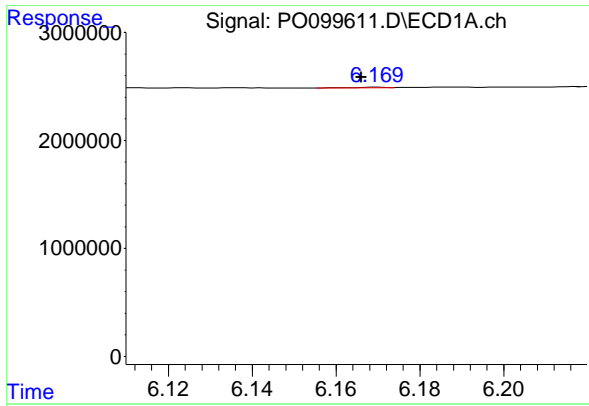
#6 AR-1016-4

R.T.: 5.873 min
 Delta R.T.: 0.006 min
 Response: 134356
 Conc: 4.32 ng/ml



#6 AR-1016-4

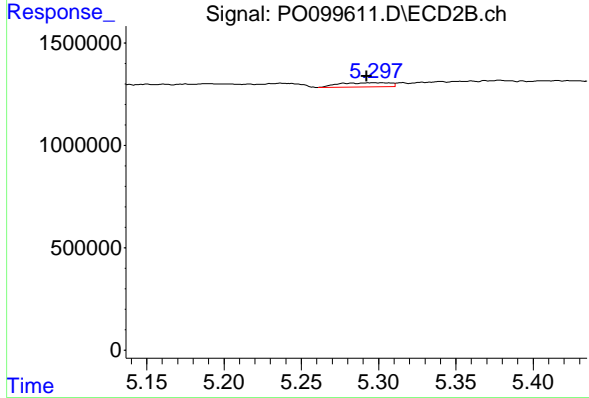
R.T.: 5.078 min
 Delta R.T.: 0.004 min
 Response: 82169
 Conc: 4.94 ng/ml



#7 AR-1016-5

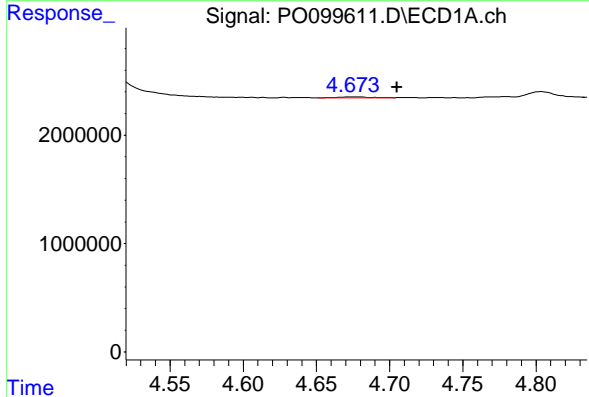
R.T.: 6.169 min
 Delta R.T.: 0.003 min
 Response: 40001
 Conc: 1.32 ng/ml

Instrument :
 ECD_O
 ClientSampleId :



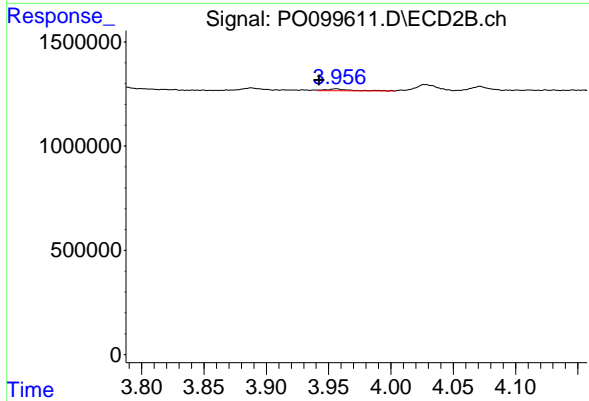
#7 AR-1016-5

R.T.: 5.297 min
 Delta R.T.: 0.005 min
 Response: 458811
 Conc: 22.21 ng/ml



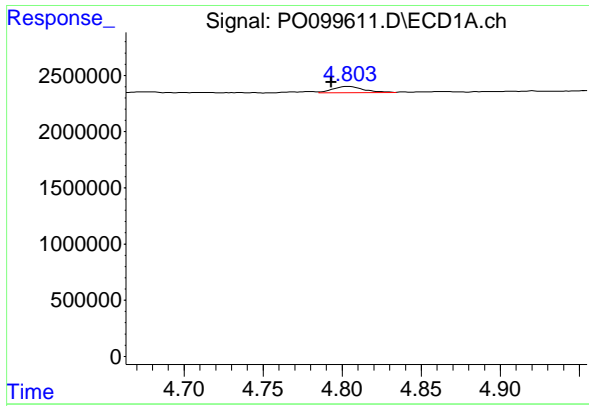
#8 AR-1221-1

R.T.: 4.674 min
 Delta R.T.: -0.032 min
 Response: 154985
 Conc: 8.14 ng/ml



#8 AR-1221-1

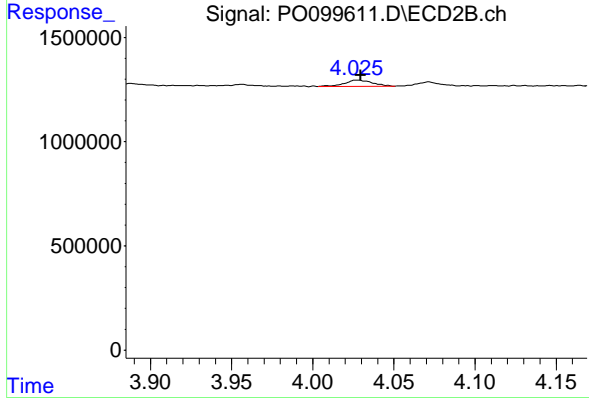
R.T.: 3.956 min
 Delta R.T.: 0.014 min
 Response: 132904
 Conc: 9.07 ng/ml



#9 AR-1221-2

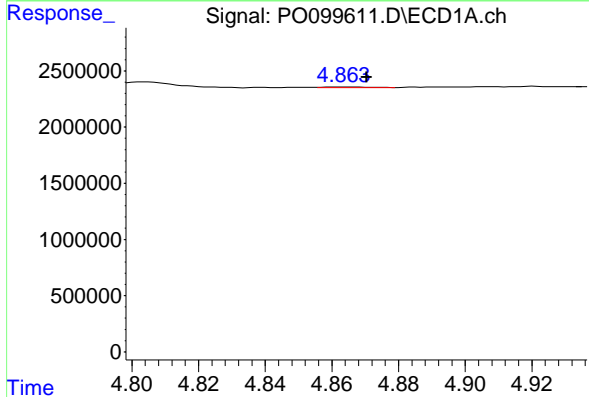
R.T.: 4.804 min
 Delta R.T.: 0.011 min
 Response: 755873
 Conc: 53.66 ng/ml

Instrument :
 ECD_O
 ClientSampleId :



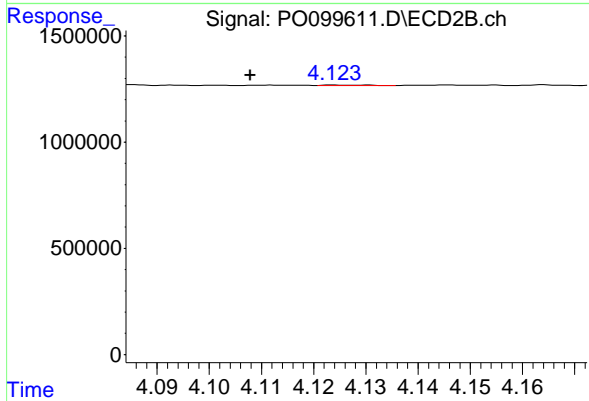
#9 AR-1221-2

R.T.: 4.027 min
 Delta R.T.: -0.002 min
 Response: 359706
 Conc: 39.28 ng/ml



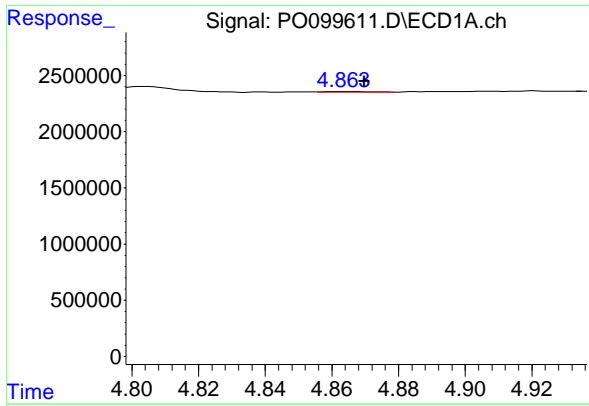
#10 AR-1221-3

R.T.: 4.863 min
 Delta R.T.: -0.007 min
 Response: 60255
 Conc: 1.45 ng/ml



#10 AR-1221-3

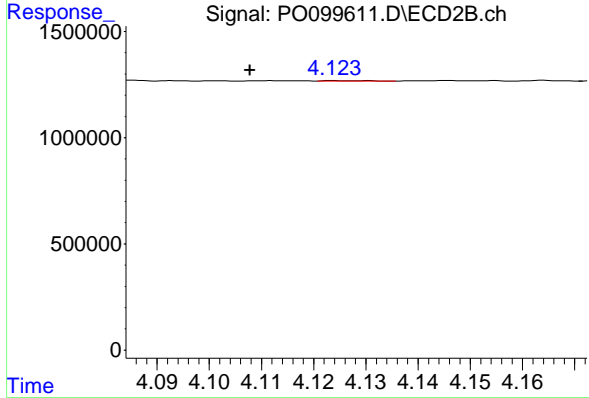
R.T.: 4.131 min
 Delta R.T.: 0.023 min
 Response: 15511
 Conc: 0.50 ng/ml



#11 AR-1232-1

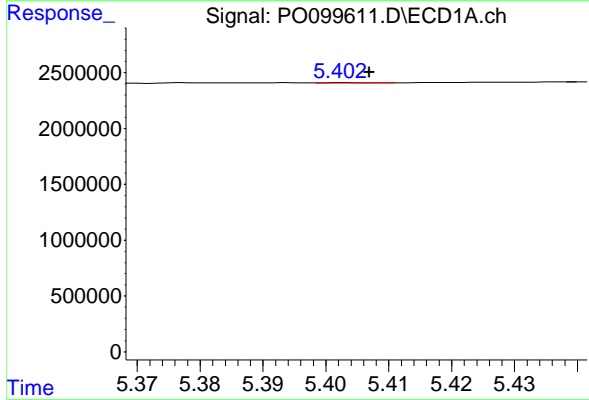
R.T.: 4.863 min
 Delta R.T.: -0.007 min
 Response: 60255
 Conc: 1.79 ng/ml

Instrument :
 ECD_O
 ClientSampleId :



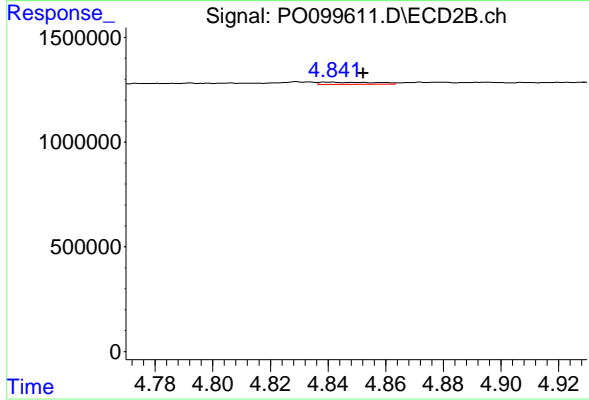
#11 AR-1232-1

R.T.: 4.131 min
 Delta R.T.: 0.023 min
 Response: 15511
 Conc: 0.60 ng/ml



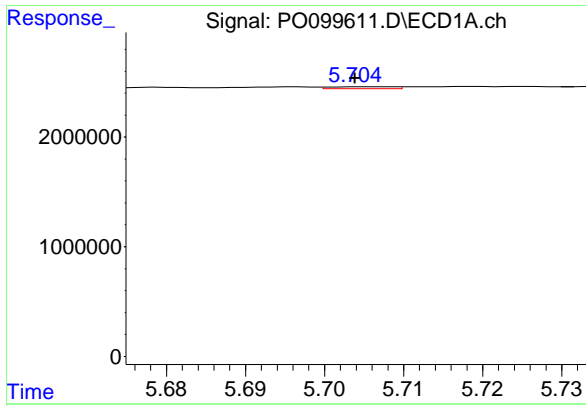
#12 AR-1232-2

R.T.: 5.403 min
 Delta R.T.: -0.004 min
 Response: 12219
 Conc: 0.73 ng/ml



#12 AR-1232-2

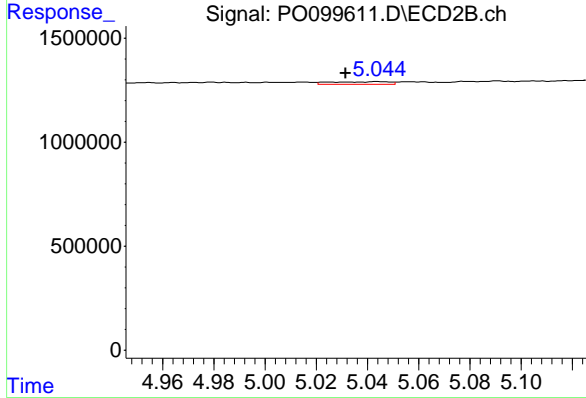
R.T.: 4.841 min
 Delta R.T.: -0.012 min
 Response: 139046
 Conc: 8.03 ng/ml



#13 AR-1232-3

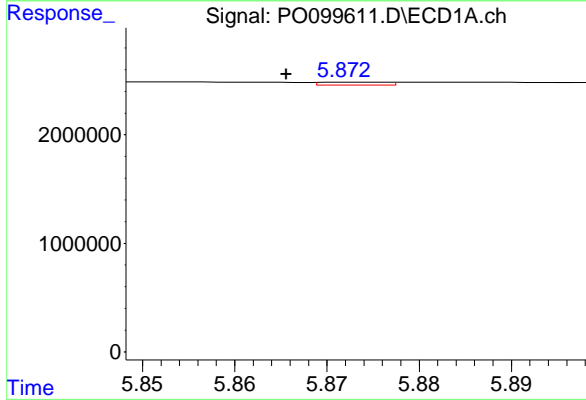
R.T.: 5.705 min
 Delta R.T.: 0.000 min
 Response: 103794
 Conc: 3.66 ng/ml

Instrument :
 ECD_O
 ClientSampleId :



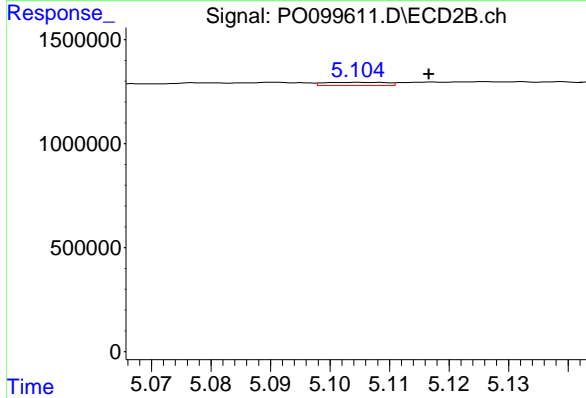
#13 AR-1232-3

R.T.: 5.044 min
 Delta R.T.: 0.012 min
 Response: 193885
 Conc: 22.08 ng/ml



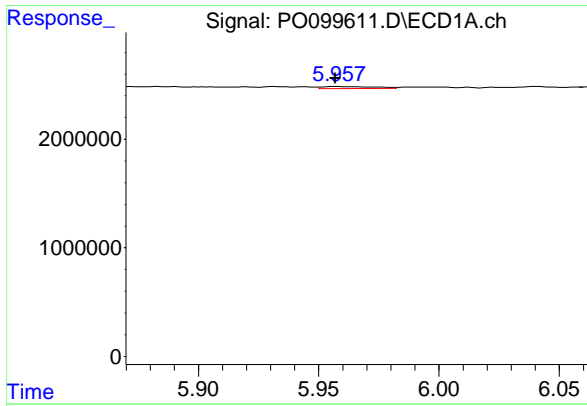
#14 AR-1232-4

R.T.: 5.873 min
 Delta R.T.: 0.007 min
 Response: 134356
 Conc: 9.96 ng/ml



#14 AR-1232-4

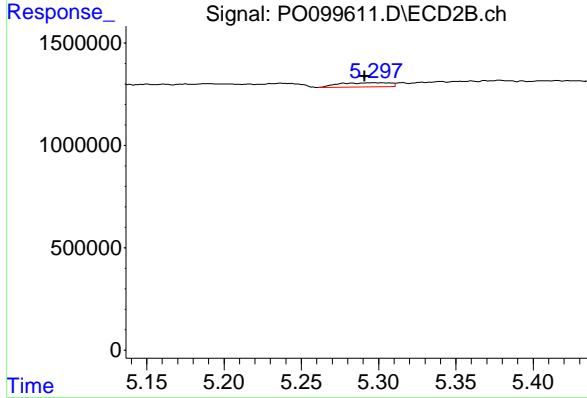
R.T.: 5.105 min
 Delta R.T.: -0.012 min
 Response: 107926
 Conc: 13.31 ng/ml



#15 AR-1232-5

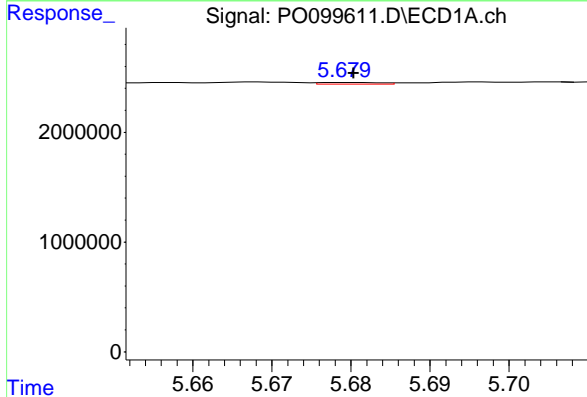
R.T.: 5.958 min
 Delta R.T.: 0.000 min
 Response: 270383
 Conc: 23.58 ng/ml

Instrument :
 ECD_O
 ClientSampleId :



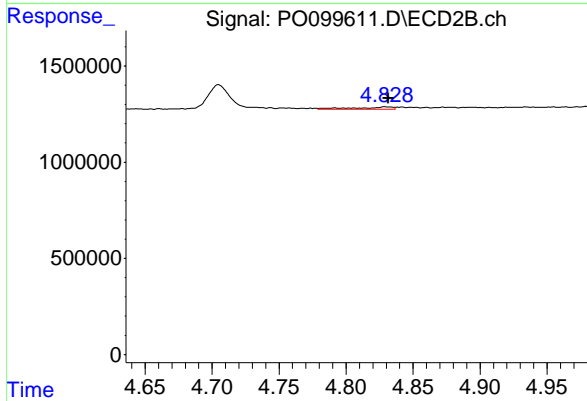
#15 AR-1232-5

R.T.: 5.297 min
 Delta R.T.: 0.006 min
 Response: 458811
 Conc: 53.64 ng/ml



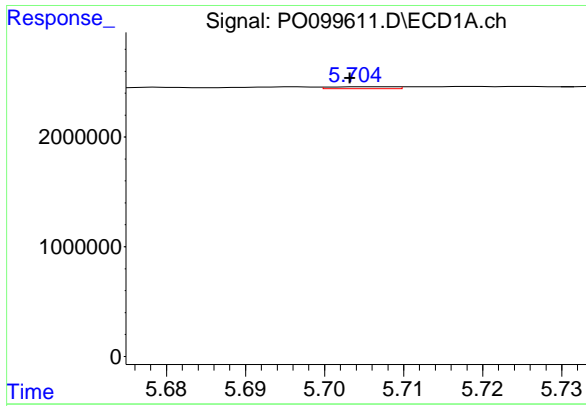
#16 AR-1242-1

R.T.: 5.680 min
 Delta R.T.: 0.000 min
 Response: 85130
 Conc: 2.71 ng/ml



#16 AR-1242-1

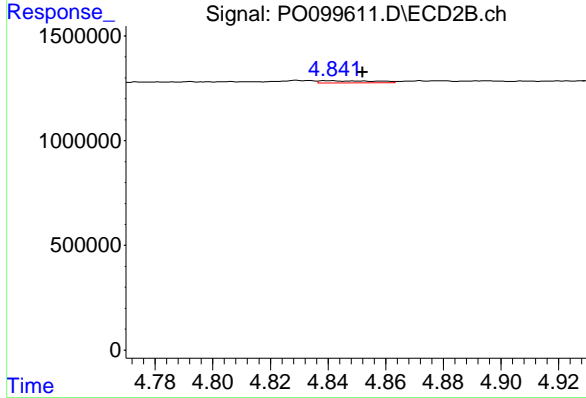
R.T.: 4.829 min
 Delta R.T.: -0.002 min
 Response: 241591
 Conc: 10.92 ng/ml



#17 AR-1242-2

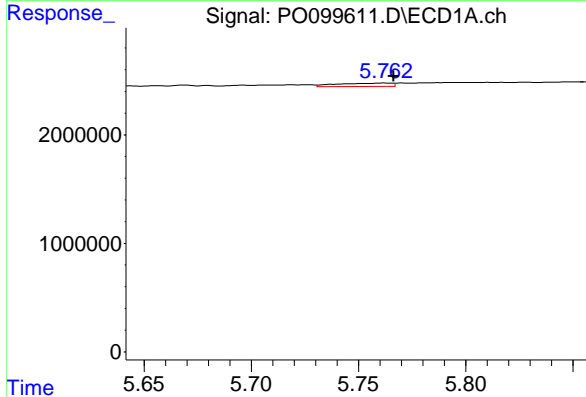
R.T.: 5.705 min
 Delta R.T.: 0.002 min
 Response: 103794
 Conc: 2.01 ng/ml

Instrument :
 ECD_O
 ClientSampleId :



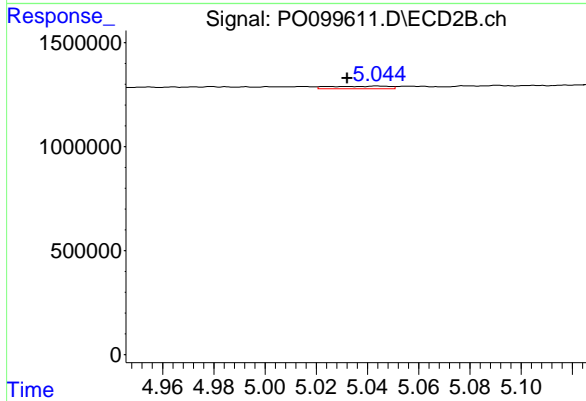
#17 AR-1242-2

R.T.: 4.841 min
 Delta R.T.: -0.011 min
 Response: 139046
 Conc: 4.67 ng/ml



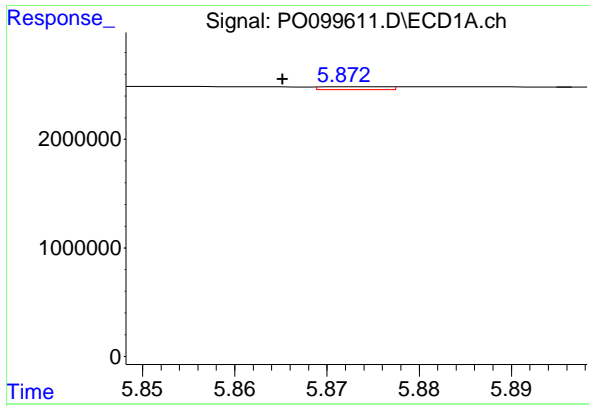
#18 AR-1242-3

R.T.: 5.763 min
 Delta R.T.: -0.004 min
 Response: 553279
 Conc: 15.88 ng/ml



#18 AR-1242-3

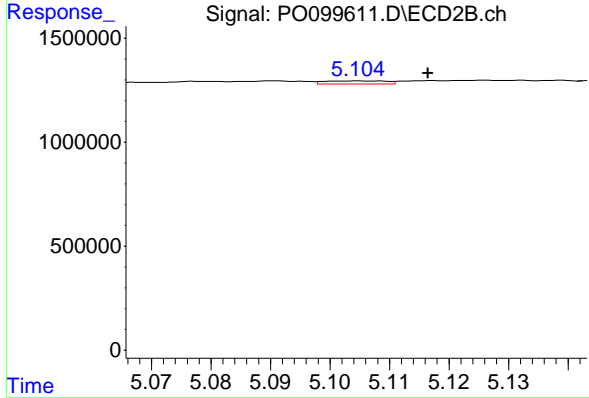
R.T.: 5.044 min
 Delta R.T.: 0.012 min
 Response: 193885
 Conc: 11.75 ng/ml



#19 AR-1242-4

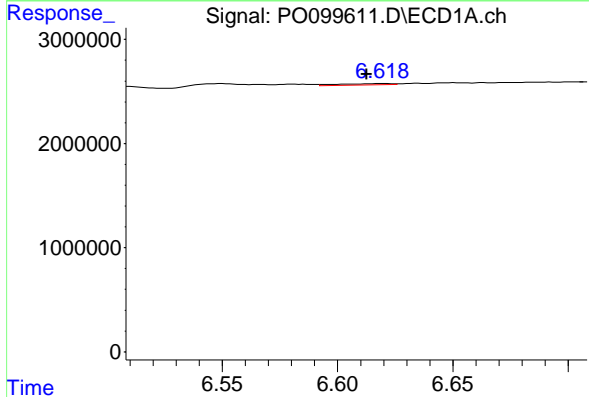
R.T.: 5.873 min
 Delta R.T.: 0.008 min
 Response: 134356
 Conc: 5.31 ng/ml

Instrument :
 ECD_O
 ClientSampleId :



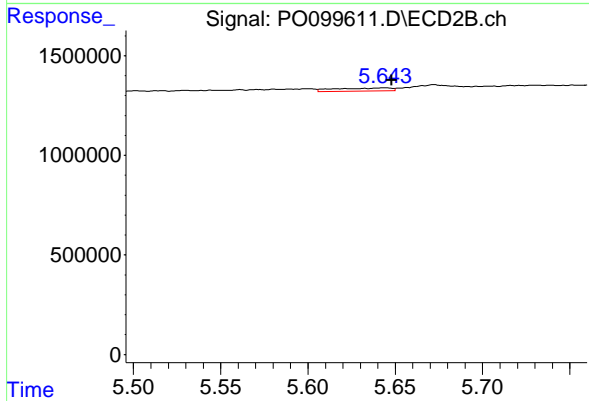
#19 AR-1242-4

R.T.: 5.105 min
 Delta R.T.: -0.012 min
 Response: 107926
 Conc: 6.41 ng/ml



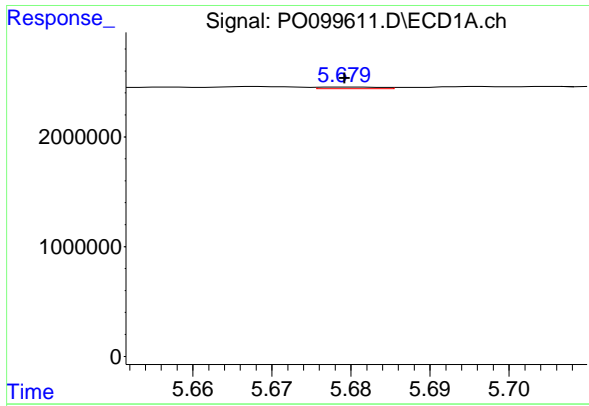
#20 AR-1242-5

R.T.: 6.619 min
 Delta R.T.: 0.006 min
 Response: 209758
 Conc: 10.25 ng/ml



#20 AR-1242-5

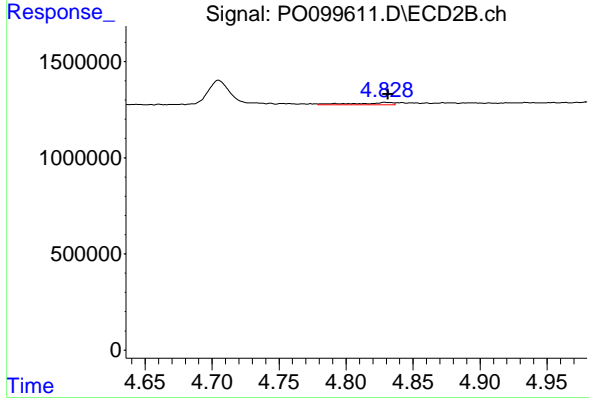
R.T.: 5.644 min
 Delta R.T.: -0.004 min
 Response: 358282
 Conc: 20.52 ng/ml



#21 AR-1248-1

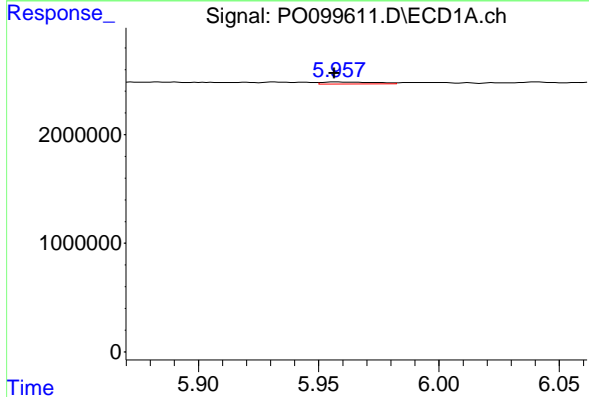
R.T.: 5.680 min
 Delta R.T.: 0.000 min
 Response: 85130
 Conc: 3.61 ng/ml

Instrument :
 ECD_O
 ClientSampleId :



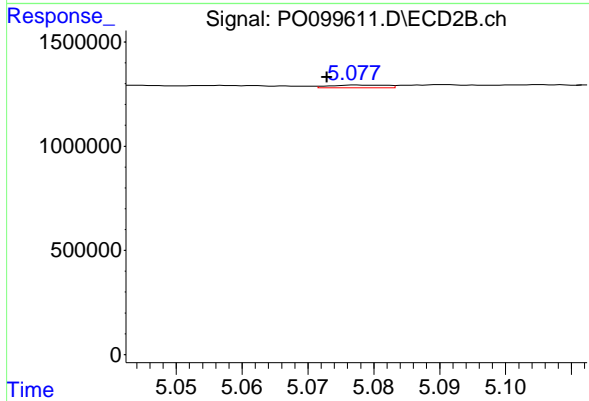
#21 AR-1248-1

R.T.: 4.829 min
 Delta R.T.: -0.002 min
 Response: 241591
 Conc: 13.99 ng/ml



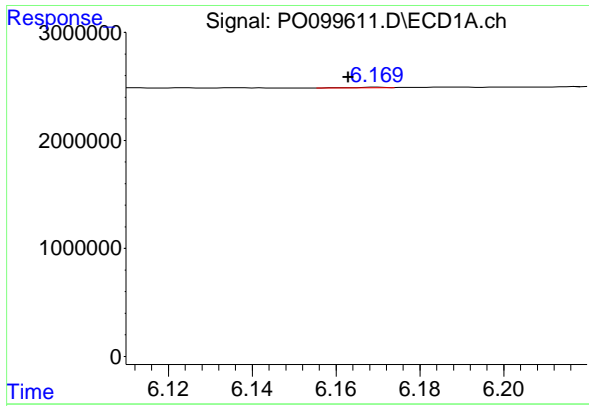
#22 AR-1248-2

R.T.: 5.958 min
 Delta R.T.: 0.001 min
 Response: 270383
 Conc: 6.95 ng/ml



#22 AR-1248-2

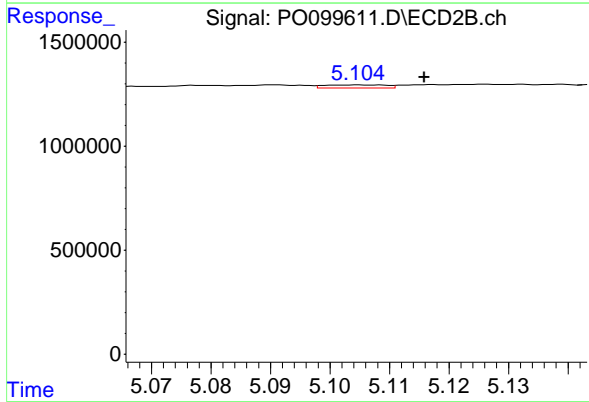
R.T.: 5.078 min
 Delta R.T.: 0.005 min
 Response: 82169
 Conc: 3.49 ng/ml



#23 AR-1248-3

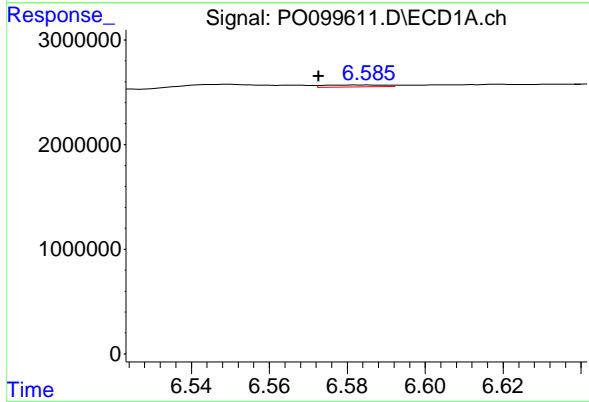
R.T.: 6.169 min
 Delta R.T.: 0.006 min
 Response: 40001
 Conc: 0.96 ng/ml

Instrument :
 ECD_O
 ClientSampleId :



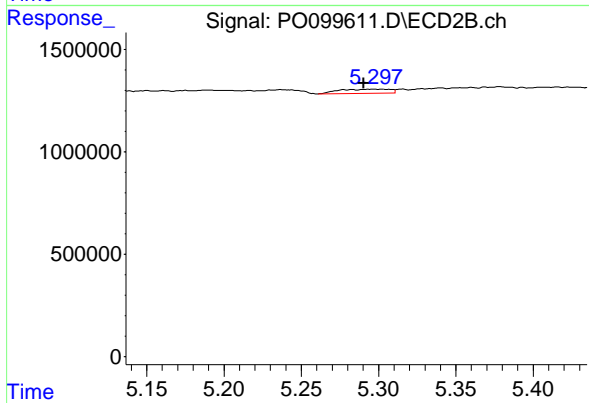
#23 AR-1248-3

R.T.: 5.105 min
 Delta R.T.: -0.011 min
 Response: 107926
 Conc: 4.36 ng/ml



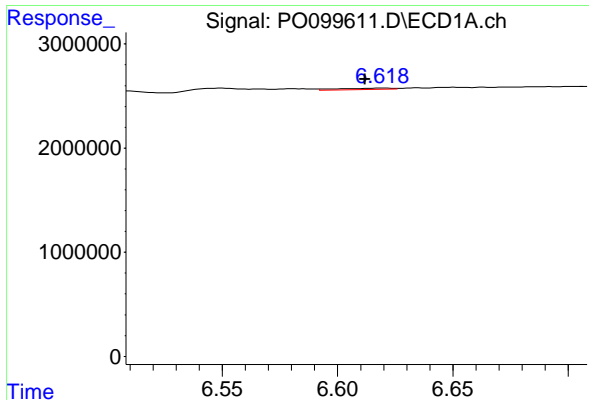
#24 AR-1248-4

R.T.: 6.585 min
 Delta R.T.: 0.012 min
 Response: 199499
 Conc: 5.19 ng/ml



#24 AR-1248-4

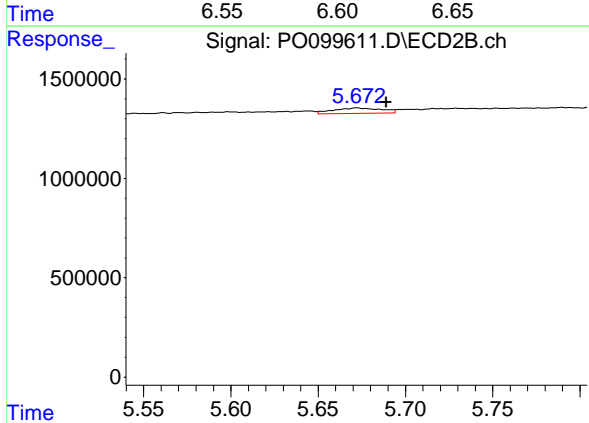
R.T.: 5.297 min
 Delta R.T.: 0.007 min
 Response: 458811
 Conc: 16.64 ng/ml



#25 AR-1248-5

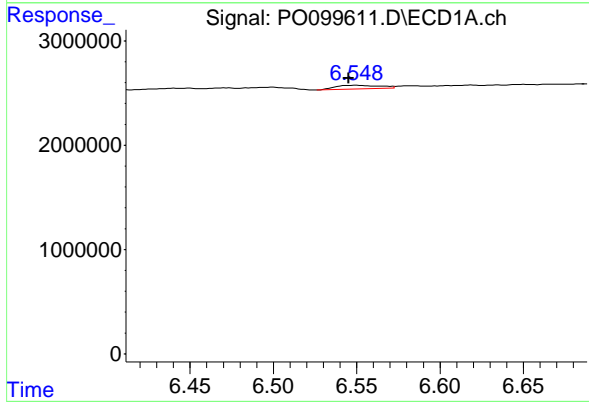
R.T.: 6.619 min
 Delta R.T.: 0.007 min
 Response: 209758
 Conc: 5.53 ng/ml

Instrument :
 ECD_O
 ClientSampleId :



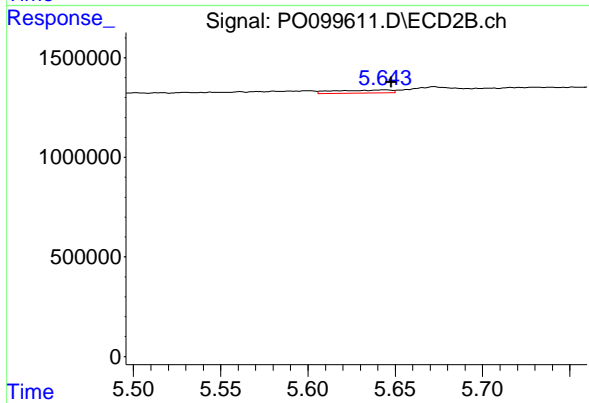
#25 AR-1248-5

R.T.: 5.672 min
 Delta R.T.: -0.017 min
 Response: 531136
 Conc: 23.28 ng/ml



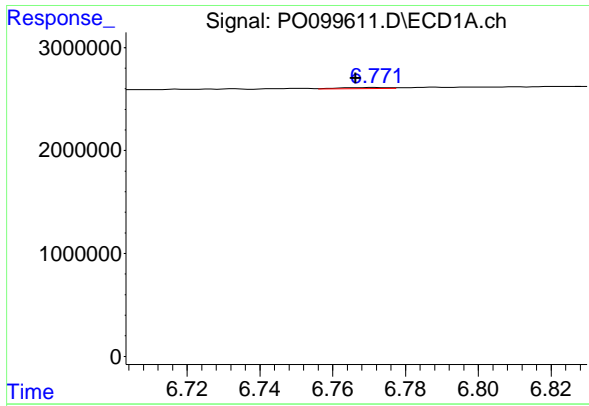
#26 AR-1254-1

R.T.: 6.550 min
 Delta R.T.: 0.004 min
 Response: 660221
 Conc: 14.67 ng/ml



#26 AR-1254-1

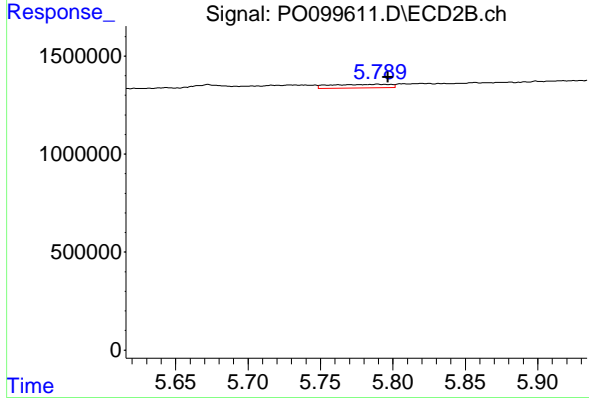
R.T.: 5.644 min
 Delta R.T.: -0.004 min
 Response: 358282
 Conc: 9.85 ng/ml



#27 AR-1254-2

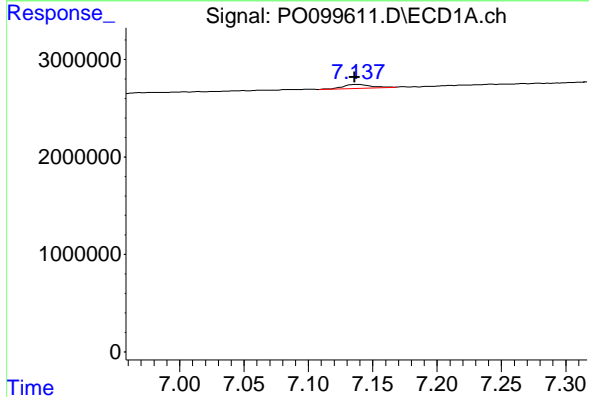
R.T.: 6.772 min
 Delta R.T.: 0.006 min
 Response: 95750
 Conc: 1.52 ng/ml

Instrument :
 ECD_O
 ClientSampleId :



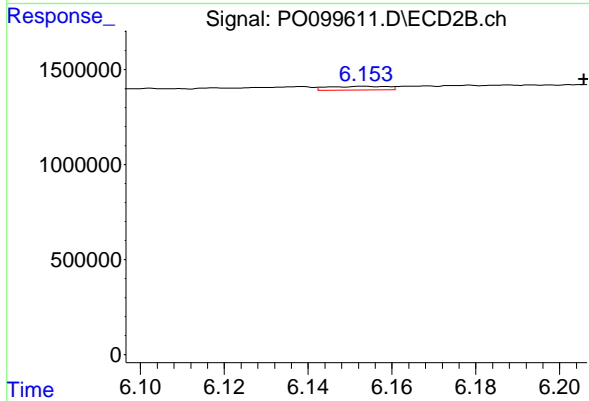
#27 AR-1254-2

R.T.: 5.789 min
 Delta R.T.: -0.007 min
 Response: 521028
 Conc: 16.04 ng/ml



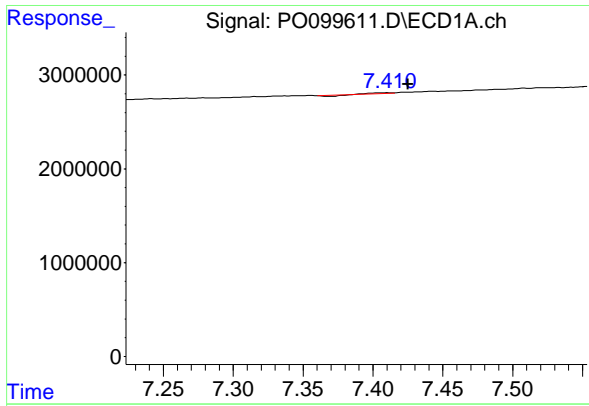
#28 AR-1254-3

R.T.: 7.138 min
 Delta R.T.: 0.002 min
 Response: 629372
 Conc: 10.81 ng/ml



#28 AR-1254-3

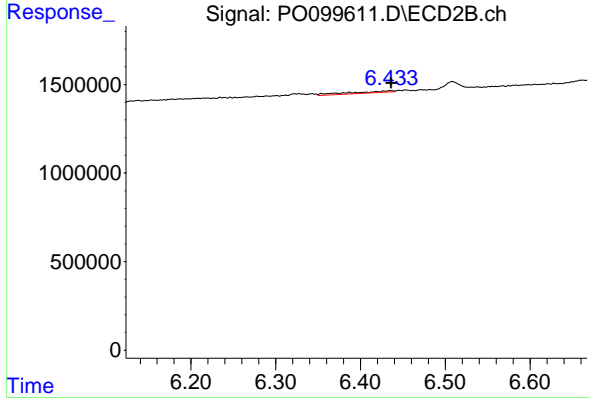
R.T.: 6.153 min
 Delta R.T.: -0.052 min
 Response: 195097
 Conc: 3.60 ng/ml



#29 AR-1254-4

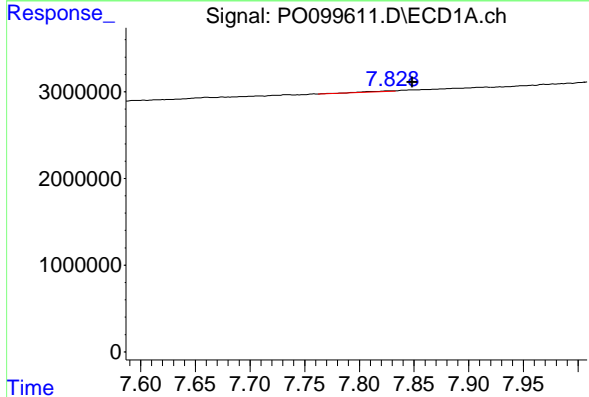
R.T.: 7.411 min
 Delta R.T.: -0.014 min
 Response: 37887
 Conc: 1.11 ng/ml

Instrument :
 ECD_O
 ClientSampleId :



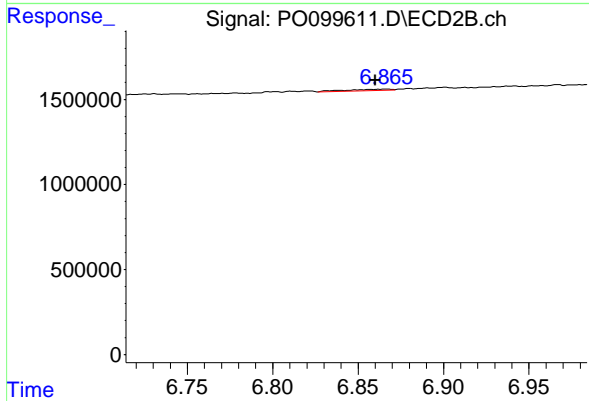
#29 AR-1254-4

R.T.: 6.435 min
 Delta R.T.: -0.002 min
 Response: 357957
 Conc: 12.71 ng/ml



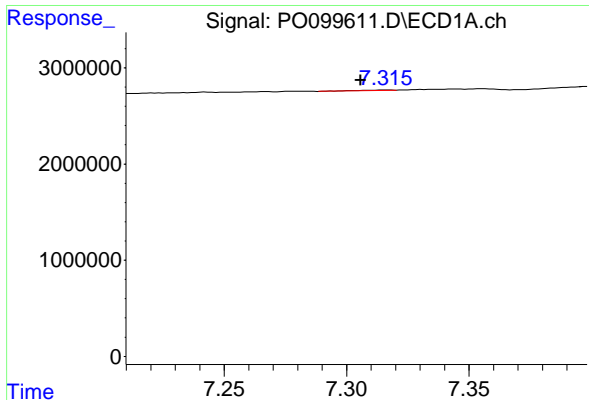
#30 AR-1254-5

R.T.: 7.829 min
 Delta R.T.: -0.019 min
 Response: 158564
 Conc: 4.05 ng/ml



#30 AR-1254-5

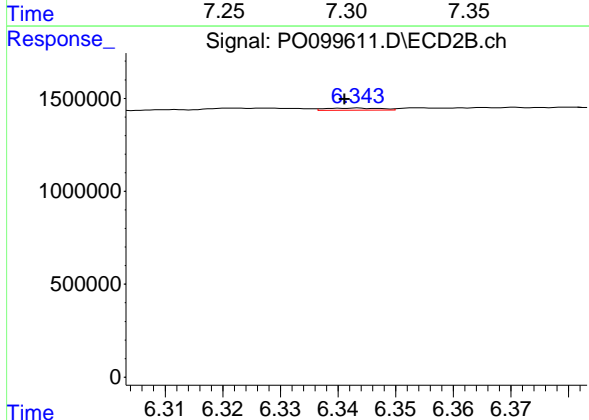
R.T.: 6.866 min
 Delta R.T.: 0.006 min
 Response: 134394
 Conc: 2.76 ng/ml



#31 AR-1260-1

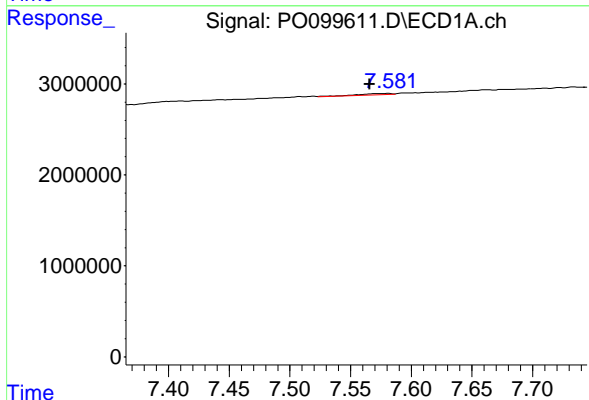
R.T.: 7.316 min
 Delta R.T.: 0.010 min
 Response: 44801
 Conc: 0.90 ng/ml

Instrument :
 ECD_O
 ClientSampleId :



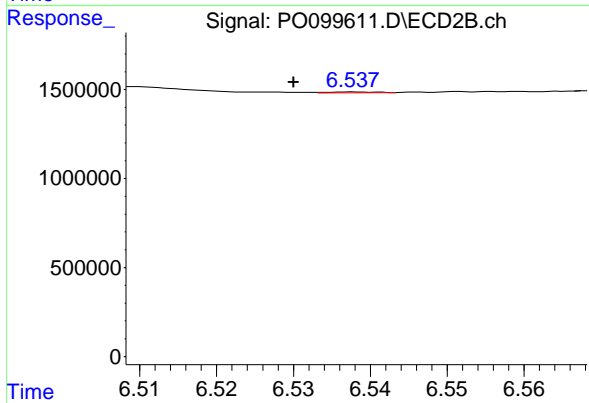
#31 AR-1260-1

R.T.: 6.343 min
 Delta R.T.: 0.002 min
 Response: 75518
 Conc: 1.75 ng/ml



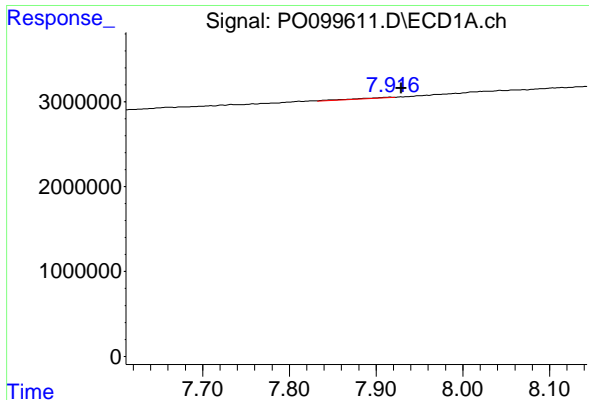
#32 AR-1260-2

R.T.: 7.582 min
 Delta R.T.: 0.016 min
 Response: 278723
 Conc: 5.46 ng/ml



#32 AR-1260-2

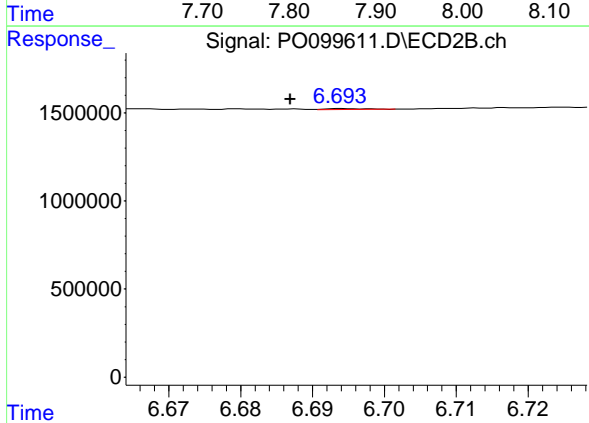
R.T.: 6.538 min
 Delta R.T.: 0.008 min
 Response: 23194
 Conc: 0.49 ng/ml



#33 AR-1260-3

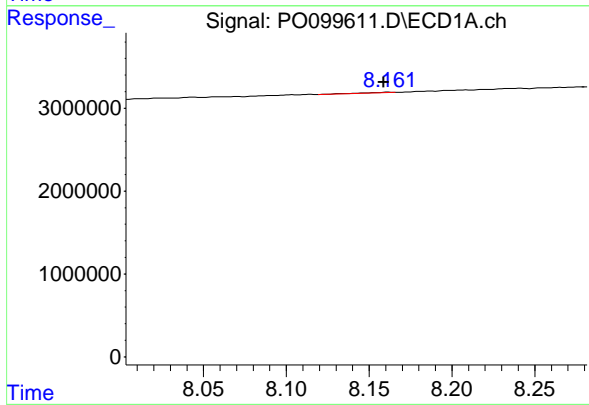
R.T.: 7.917 min
 Delta R.T.: -0.013 min
 Response: 210346
 Conc: 5.87 ng/ml

Instrument :
 ECD_O
 ClientSampleId :



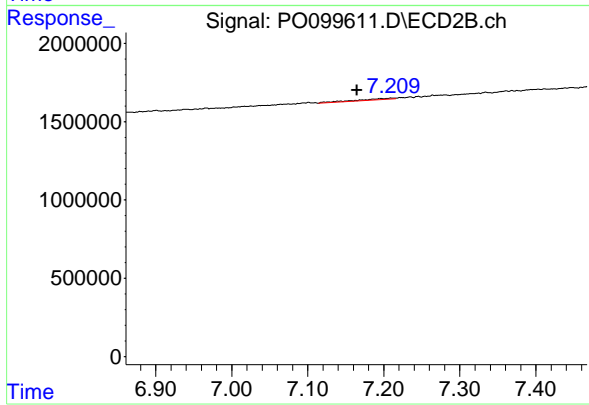
#33 AR-1260-3

R.T.: 6.694 min
 Delta R.T.: 0.007 min
 Response: 20231
 Conc: 0.44 ng/ml



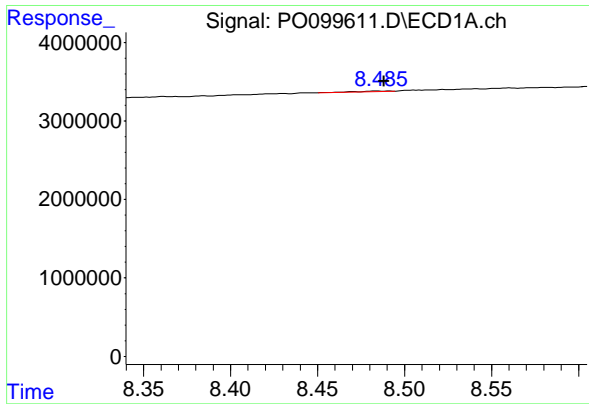
#34 AR-1260-4

R.T.: 8.161 min
 Delta R.T.: 0.002 min
 Response: 72725
 Conc: 1.84 ng/ml



#34 AR-1260-4

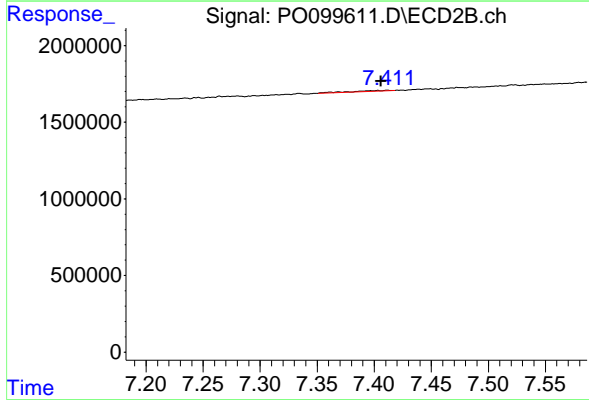
R.T.: 7.210 min
 Delta R.T.: 0.045 min
 Response: 317271
 Conc: 8.63 ng/ml



#35 AR-1260-5

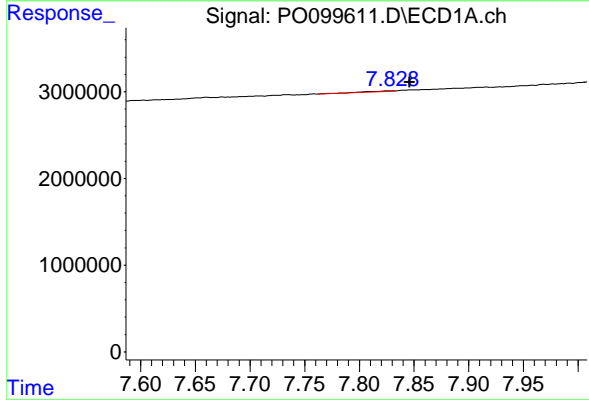
R.T.: 8.485 min
 Delta R.T.: -0.003 min
 Response: 94532
 Conc: 1.58 ng/ml

Instrument :
 ECD_O
 ClientSampleId :



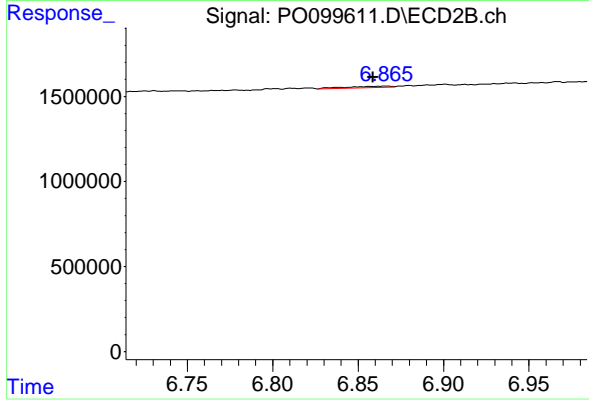
#35 AR-1260-5

R.T.: 7.412 min
 Delta R.T.: 0.005 min
 Response: 119112
 Conc: 1.63 ng/ml



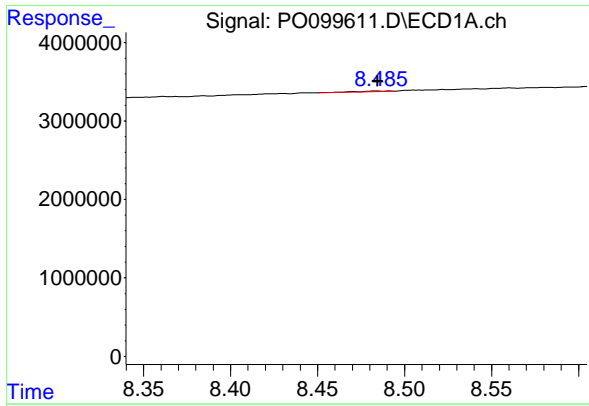
#36 AR-1262-1

R.T.: 7.829 min
 Delta R.T.: -0.017 min
 Response: 158564
 Conc: 5.02 ng/ml



#36 AR-1262-1

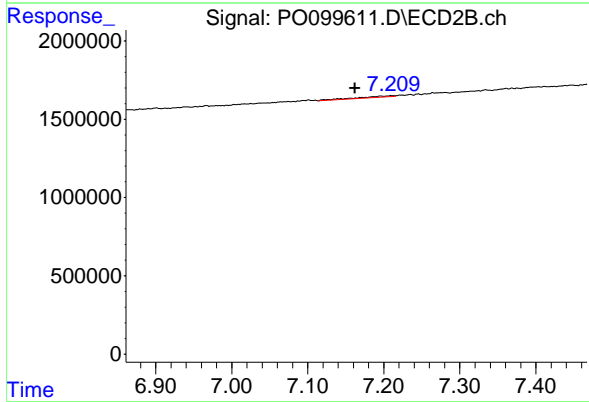
R.T.: 6.866 min
 Delta R.T.: 0.008 min
 Response: 134394
 Conc: 5.47 ng/ml



#37 AR-1262-2

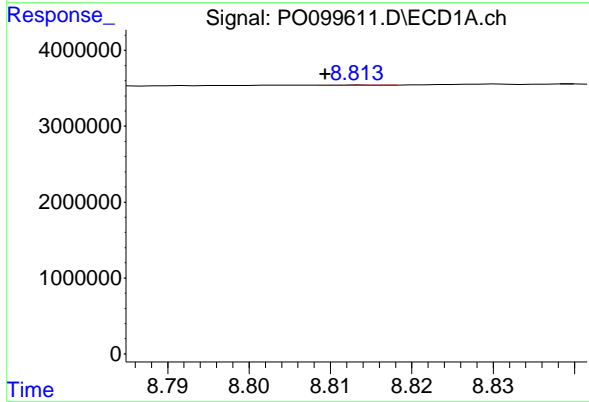
R.T.: 8.485 min
 Delta R.T.: 0.000 min
 Response: 94532
 Conc: 1.28 ng/ml

Instrument :
 ECD_O
 ClientSampleId :



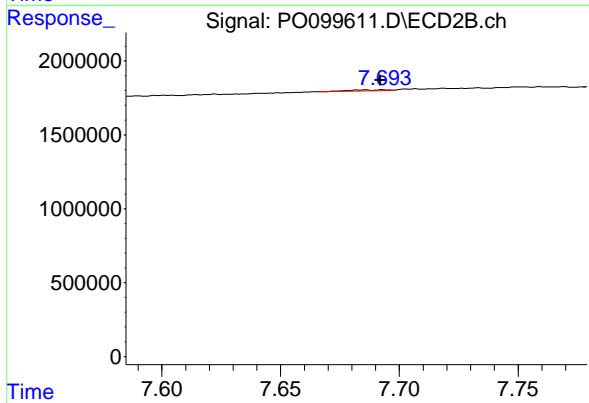
#37 AR-1262-2

R.T.: 7.210 min
 Delta R.T.: 0.048 min
 Response: 317271
 Conc: 6.40 ng/ml



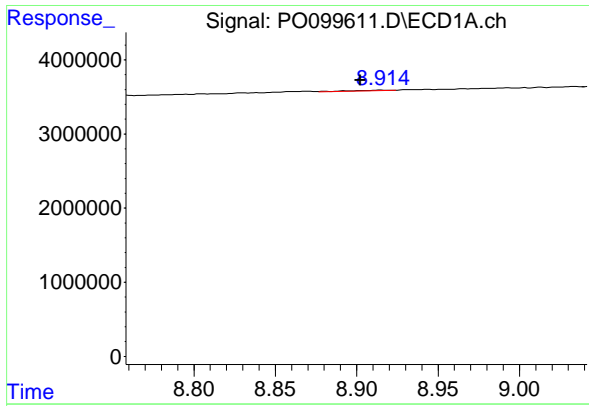
#38 AR-1262-3

R.T.: 8.813 min
 Delta R.T.: 0.004 min
 Response: 18116
 Conc: 0.35 ng/ml



#38 AR-1262-3

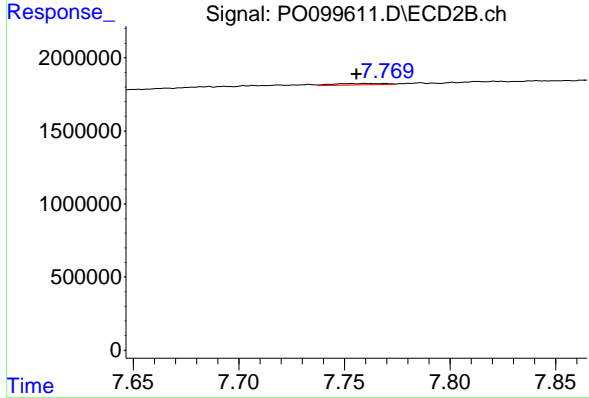
R.T.: 7.694 min
 Delta R.T.: 0.002 min
 Response: 65705
 Conc: 1.78 ng/ml



#39 AR-1262-4

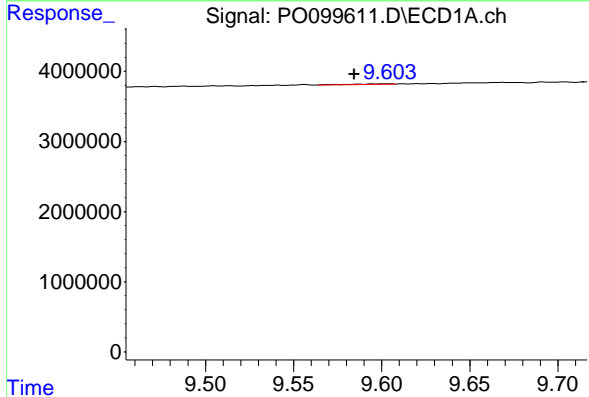
R.T.: 8.915 min
 Delta R.T.: 0.013 min
 Response: 131776
 Conc: 3.39 ng/ml

Instrument :
 ECD_O
 ClientSampleId :



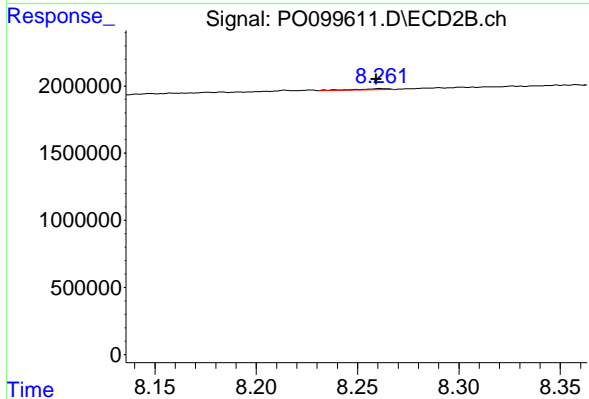
#39 AR-1262-4

R.T.: 7.760 min
 Delta R.T.: 0.004 min
 Response: 160602
 Conc: 2.50 ng/ml



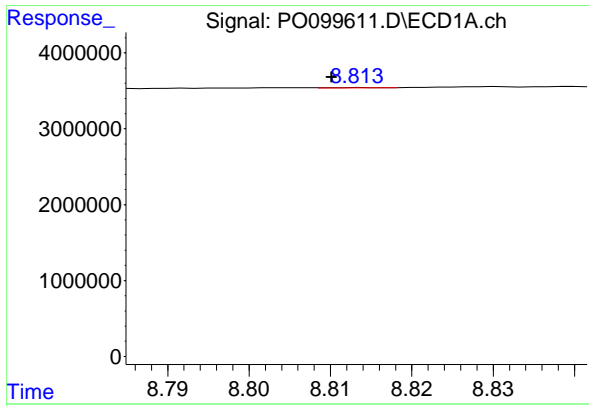
#40 AR-1262-5

R.T.: 9.603 min
 Delta R.T.: 0.019 min
 Response: 109386
 Conc: 5.15 ng/ml



#40 AR-1262-5

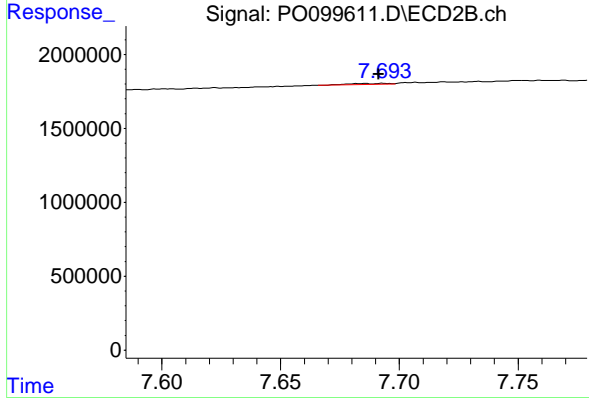
R.T.: 8.261 min
 Delta R.T.: 0.002 min
 Response: 84448
 Conc: 3.07 ng/ml



#41 AR-1268-1

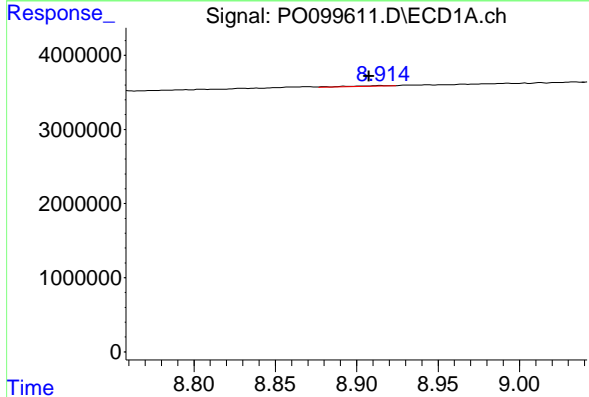
R.T.: 8.813 min
 Delta R.T.: 0.003 min
 Response: 18116
 Conc: 0.18 ng/ml

Instrument :
 ECD_O
 ClientSampleId :



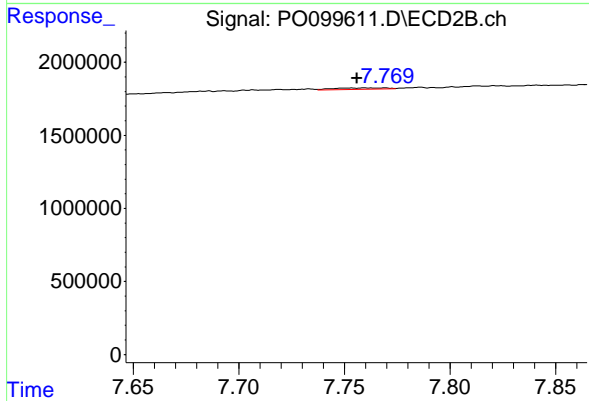
#41 AR-1268-1

R.T.: 7.694 min
 Delta R.T.: 0.002 min
 Response: 65705
 Conc: 0.60 ng/ml



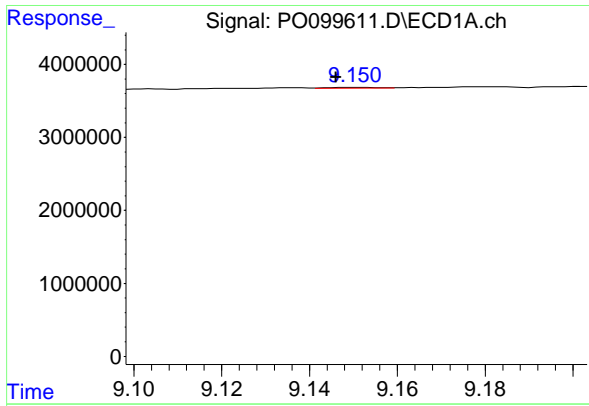
#42 AR-1268-2

R.T.: 8.915 min
 Delta R.T.: 0.008 min
 Response: 131776
 Conc: 1.55 ng/ml



#42 AR-1268-2

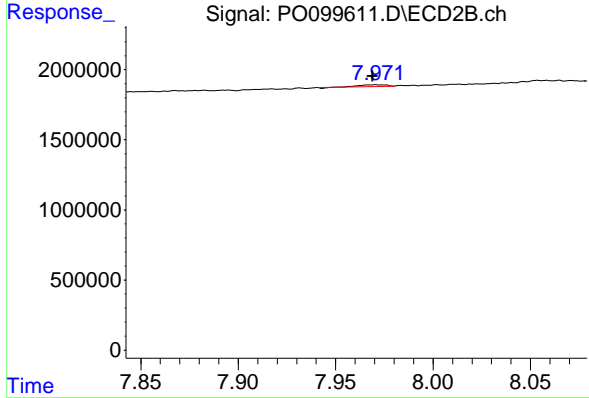
R.T.: 7.760 min
 Delta R.T.: 0.004 min
 Response: 160602
 Conc: 1.63 ng/ml



#43 AR-1268-3

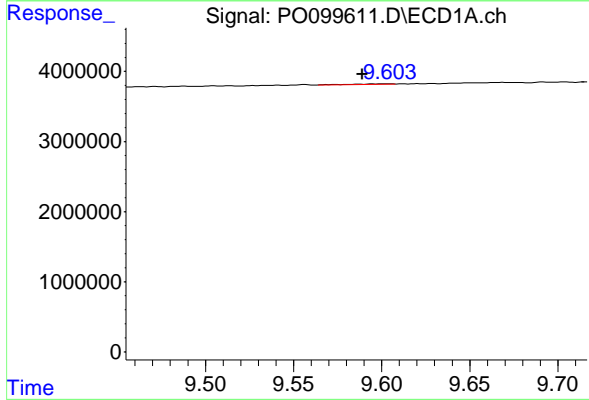
R.T.: 9.150 min
 Delta R.T.: 0.004 min
 Response: 84655
 Conc: 0.99 ng/ml

Instrument :
 ECD_O
 ClientSampleId :



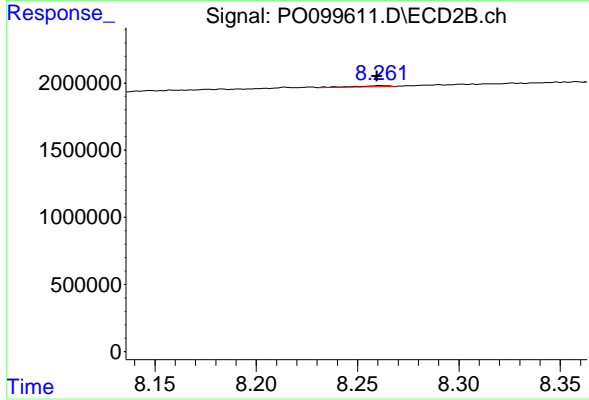
#43 AR-1268-3

R.T.: 7.971 min
 Delta R.T.: 0.002 min
 Response: 100639
 Conc: 1.06 ng/ml



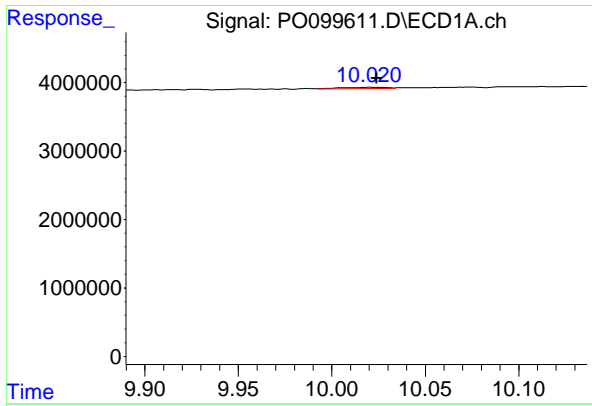
#44 AR-1268-4

R.T.: 9.603 min
 Delta R.T.: 0.014 min
 Response: 109386
 Conc: 4.50 ng/ml



#44 AR-1268-4

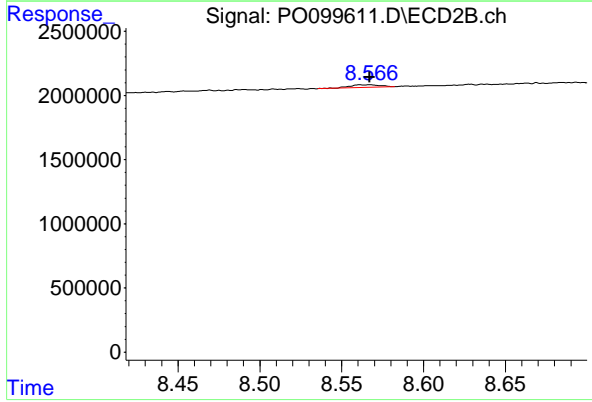
R.T.: 8.261 min
 Delta R.T.: 0.002 min
 Response: 84448
 Conc: 2.82 ng/ml



#45 AR-1268-5

R.T.: 10.021 min
 Delta R.T.: -0.003 min
 Response: 304922
 Conc: 1.43 ng/ml

Instrument :
 ECD_O
 ClientSampleId :



#45 AR-1268-5

R.T.: 8.567 min
 Delta R.T.: 0.000 min
 Response: 261341
 Conc: 1.04 ng/ml