

Data Path : Z:\pestpcbsrv\HPCHEM1\ECD_0\Data\P0111023\
 Data File : P0099622.D
 Signal(s) : Signal #1: ECD1A.ch Signal #2: ECD2B.ch
 Acq On : 11 Nov 2023 03:15
 Operator : YP/AJ
 Sample : AR1242CCC500
 Misc :
 ALS Vial : 4 Sample Multiplier: 1

Instrument :
 ECD_0
 ClientSampleId :

Integration File signal 1: autoint1.e
 Integration File signal 2: autoint2.e
 Quant Time: Nov 11 04:25:25 2023
 Quant Method : Z:\pestpcbsrv\HPCHEM1\ECD_0\methods\P0110923.M
 Quant Title : GC EXTRACTABLES
 QLast Update : Fri Nov 10 11:13:12 2023
 Response via : Initial Calibration
 Integrator: ChemStation

Volume Inj. : 2 µl
 Signal #1 Phase : ZB-MR1 Signal #2 Phase: ZB-MR2
 Signal #1 Info : 30Mx0.32mmx 0.50µ Signal #2 Info : 30M x 0.32mm x 0.25µm

Compound	RT#1	RT#2	Resp#1	Resp#2	ng/ml	ng/ml

System Monitoring Compounds						
1) SA Tetrachlo...	4.492	3.722	88326061	63329128	51.308	52.237
2) SA Decachlor...	10.378	8.835	43569584	48568882	68.258	66.124
Target Compounds						
3) L1 AR-1016-1	5.678	4.830	18005560	11438792	463.311	425.395
4) L1 AR-1016-2	5.701	4.849	27770934	15599385	433.608	427.975
5) L1 AR-1016-3	5.764	5.029	18301699	8559599	422.355	427.100
6) L1 AR-1016-4	5.863	5.070	13800236	7256091	444.073	436.631
7) L1 AR-1016-5	6.162	5.288	13811732	9086239	454.156	439.850
8) L2 AR-1221-1	4.700	3.939	2638844	1980839	138.549	135.203
9) L2 AR-1221-2	4.792	4.027	3977481	2490114	282.360	271.890
10) L2 AR-1221-3	4.868	4.105	12294350	9160650	296.475	295.997
11) L3 AR-1232-1	4.868	4.105	12294350	9160650	364.961	354.369
12) L3 AR-1232-2	5.405	4.849	15716189	15599385	941.828	900.534
13) L3 AR-1232-3	5.701	5.029	27770934	8559599	978.947	974.650
14) L3 AR-1232-4	5.863	5.113	13800236	8846545	1023.179	1090.716
15) L3 AR-1232-5	5.955	5.288	11497941	9086239	1002.854	1062.220
16) L4 AR-1242-1	5.678	4.830	18005560	11438792	574.164	516.928
17) L4 AR-1242-2	5.701	4.849	27770934	15599385	538.367	523.902
18) L4 AR-1242-3	5.764	5.029	18301699	8559599	525.134	518.807
19) L4 AR-1242-4	5.863	5.113	13800236	8846545	545.710	525.074
20) L4 AR-1242-5	6.611	5.644	12156475	10225182	594.177	585.733
21) L5 AR-1248-1	5.678	4.830	18005560	11438792	762.491	662.602
22) L5 AR-1248-2	5.955	5.070	11497941	7256091	295.713	308.216
23) L5 AR-1248-3	6.162	5.113	13811732	8846545	332.904	357.123
24) L5 AR-1248-4	6.571	5.288	11557643	9086239	300.903	329.566
25) L5 AR-1248-5	6.611	5.686	12156475	8022569	320.576	351.579
26) L6 AR-1254-1	6.543	5.644	9055633	10225182	201.221	281.107 #
27) L6 AR-1254-2	6.769	5.794	10779054	2982062	170.928	91.798 #
28) L6 AR-1254-3	7.136	6.204	4939184	4512380	84.801	83.219
29) L6 AR-1254-4	7.425	6.434	2692763	2653446	79.009	94.221
30) L6 AR-1254-5	7.850	6.857	1243475	1345198	31.780	27.608
31) L7 AR-1260-1	7.305	6.351	854446	2413565	17.191	55.961 #
32) L7 AR-1260-2	7.564	6.524	1036359	856912	20.289	18.288
33) L7 AR-1260-3	7.911	6.680	110155	1064776	3.072	23.329 #
34) L7 AR-1260-4	8.145	7.198	569464	1002516	14.426	27.281 #
35) L7 AR-1260-5	8.490	7.403	154298	193106	2.576	2.649
36) L8 AR-1262-1	7.850	6.857	1243475	1345198	39.366	54.726 #
37) L8 AR-1262-2	8.490	7.198f	154298	1002516	2.086	20.223 #
38) L8 AR-1262-3	8.790	7.680	58800	73438	1.145	1.986 #
39) L8 AR-1262-4	8.916	7.752	71548	238450	1.840	3.712 #
40) L8 AR-1262-5	9.589	0.000	95006	0	4.470	N.D. #
41) L9 AR-1268-1	8.830	7.680	250647	73438	2.489	0.668 #

Data Path : Z:\pestpcbsrv\HPCHEM1\ECD_O\Data\P0111023\
 Data File : P0099622.D
 Signal(s) : Signal #1: ECD1A.ch Signal #2: ECD2B.ch
 Acq On : 11 Nov 2023 03:15
 Operator : YP/AJ
 Sample : AR1242CCC500
 Misc :
 ALS Vial : 4 Sample Multiplier: 1

Instrument :
 ECD_O
 ClientSampleId :

Integration File signal 1: autoint1.e
 Integration File signal 2: autoint2.e
 Quant Time: Nov 11 04:25:25 2023
 Quant Method : Z:\pestpcbsrv\HPCHEM1\ECD_O\methods\P0110923.M
 Quant Title : GC EXTRACTABLES
 QLast Update : Fri Nov 10 11:13:12 2023
 Response via : Initial Calibration
 Integrator: ChemStation

Volume Inj. : 2 µl
 Signal #1 Phase : ZB-MR1 Signal #2 Phase: ZB-MR2
 Signal #1 Info : 30Mx0.32mmx 0.50µ Signal #2 Info : 30M x 0.32mm x 0.25µm

	Compound	RT#1	RT#2	Resp#1	Resp#2	ng/ml	ng/ml
42)	L9 AR-1268-2	8.916	7.752	71548	238450	0.843	2.418 #
43)	L9 AR-1268-3	9.145	7.967	117508	261143	1.378	2.758 #
44)	L9 AR-1268-4	9.589	0.000	95006	0	3.908	N.D. #
45)	L9 AR-1268-5	10.024	8.563	478368	560211	2.251	2.226

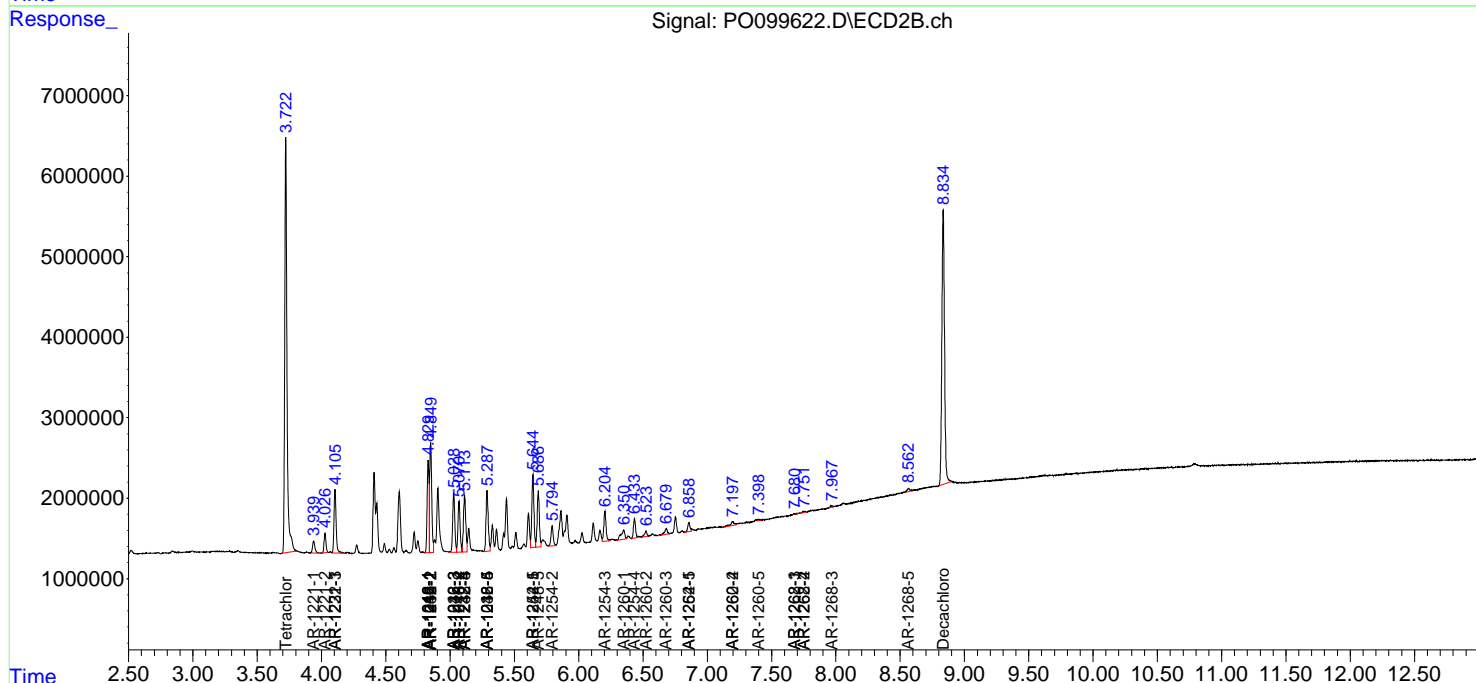
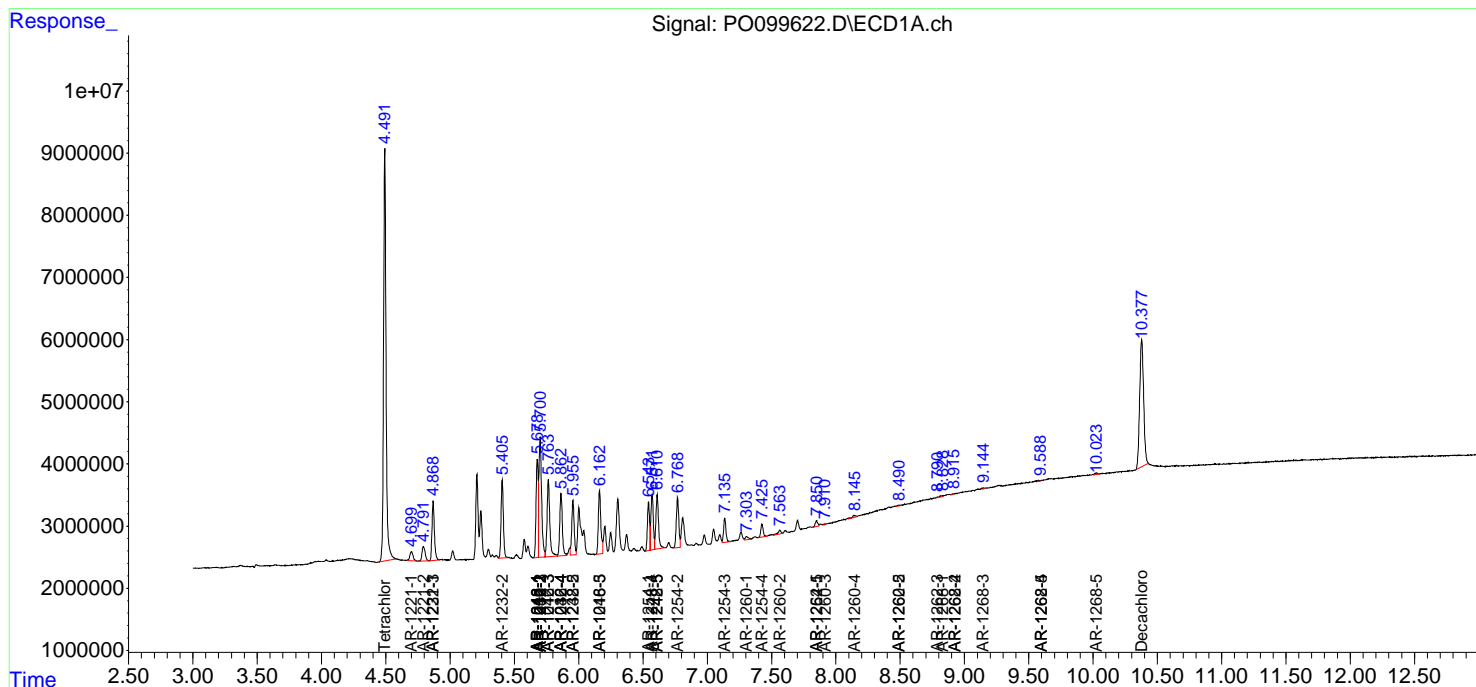
(f)=RT Delta > 1/2 Window (#)=Amounts differ by > 25% (m)=manual int.

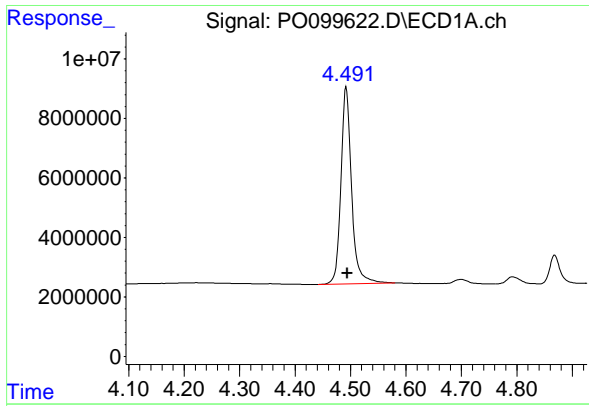
Data Path : Z:\pestpcbsrv\HPCHEM1\ECD_O\Data\PO111023\
 Data File : PO099622.D
 Signal(s) : Signal #1: ECD1A.ch Signal #2: ECD2B.ch
 Acq On : 11 Nov 2023 03:15
 Operator : YP/AJ
 Sample : AR1242CCC500
 Misc :
 ALS Vial : 4 Sample Multiplier: 1

Instrument :
 ECD_O
 ClientSampleId :

Integration File signal 1: autoint1.e
 Integration File signal 2: autoint2.e
 Quant Time: Nov 11 04:25:25 2023
 Quant Method : Z:\pestpcbsrv\HPCHEM1\ECD_O\methods\PO110923.M
 Quant Title : GC EXTRACTABLES
 QLast Update : Fri Nov 10 11:13:12 2023
 Response via : Initial Calibration
 Integrator: ChemStation

Volume Inj. : 2 µl
 Signal #1 Phase : ZB-MR1 Signal #2 Phase: ZB-MR2
 Signal #1 Info : 30Mx0.32mmx 0.50µm Signal #2 Info : 30M x 0.32mm x 0.25µm

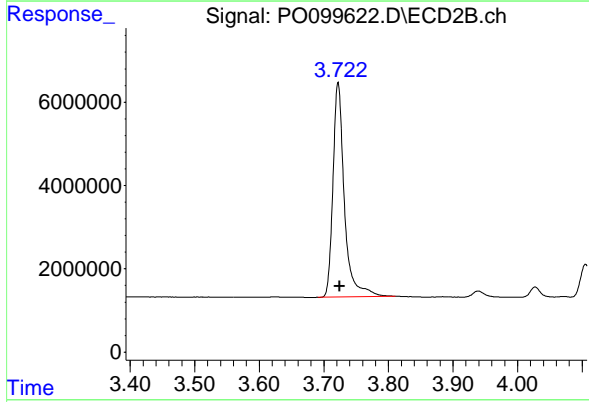




#1 Tetrachloro-m-xylene

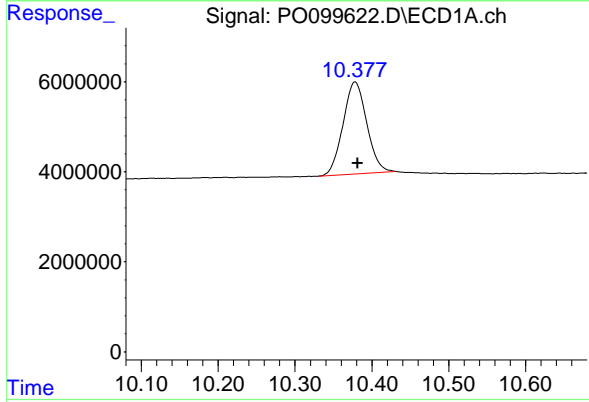
R.T.: 4.492 min
 Delta R.T.: -0.002 min
 Response: 88326061
 Conc: 51.31 ng/ml

Instrument :
 ECD_O
 ClientSampleId :



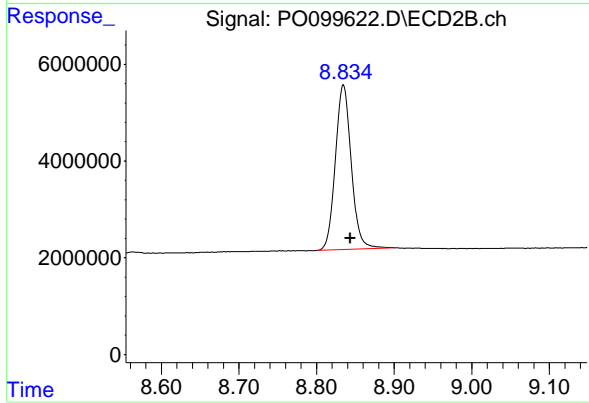
#1 Tetrachloro-m-xylene

R.T.: 3.722 min
 Delta R.T.: -0.002 min
 Response: 63329128
 Conc: 52.24 ng/ml



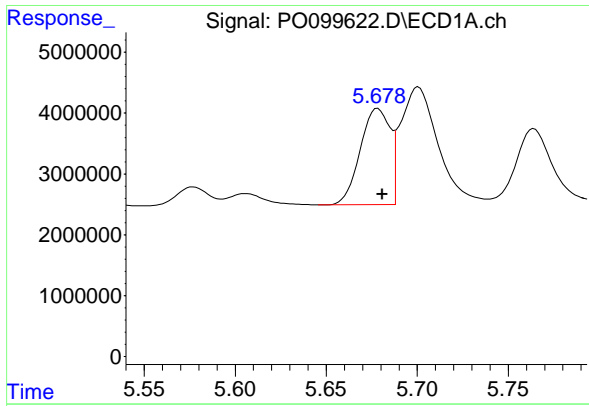
#2 Decachlorobiphenyl

R.T.: 10.378 min
 Delta R.T.: -0.003 min
 Response: 43569584
 Conc: 68.26 ng/ml



#2 Decachlorobiphenyl

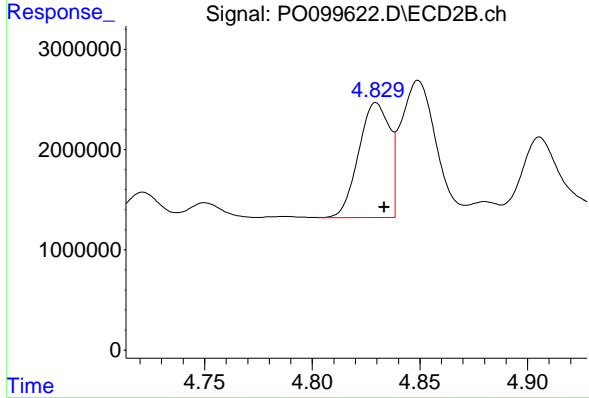
R.T.: 8.835 min
 Delta R.T.: -0.009 min
 Response: 48568882
 Conc: 66.12 ng/ml



#3 AR-1016-1

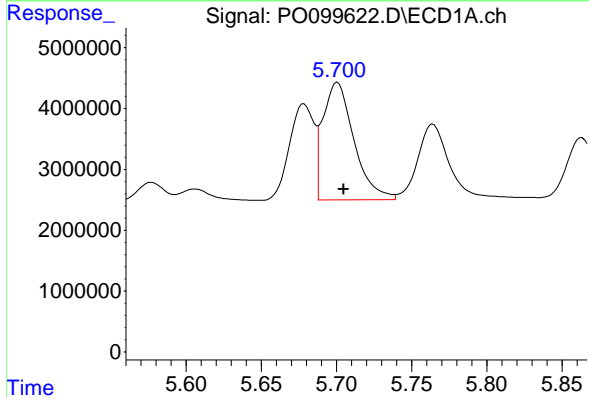
R.T.: 5.678 min
 Delta R.T.: -0.003 min
 Response: 18005560
 Conc: 463.31 ng/ml

Instrument :
 ECD_O
 ClientSampleId :



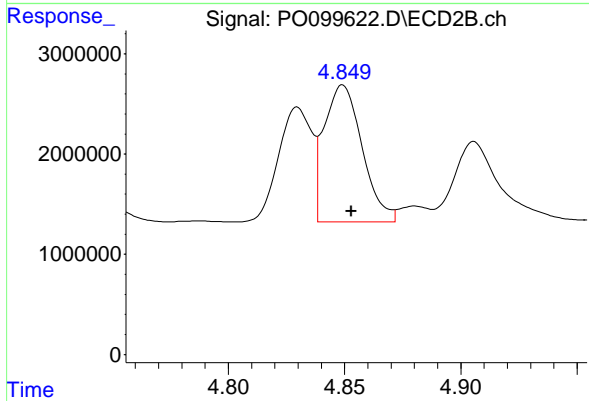
#3 AR-1016-1

R.T.: 4.830 min
 Delta R.T.: -0.004 min
 Response: 11438792
 Conc: 425.40 ng/ml



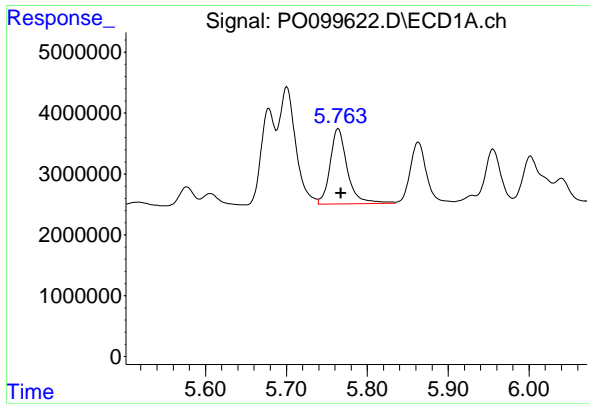
#4 AR-1016-2

R.T.: 5.701 min
 Delta R.T.: -0.004 min
 Response: 27770934
 Conc: 433.61 ng/ml



#4 AR-1016-2

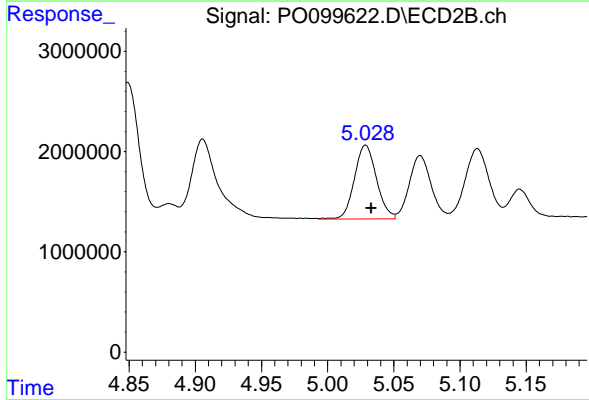
R.T.: 4.849 min
 Delta R.T.: -0.004 min
 Response: 15599385
 Conc: 427.97 ng/ml



#5 AR-1016-3

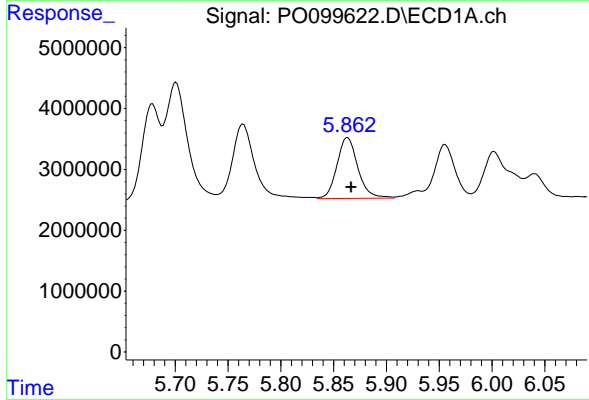
R.T.: 5.764 min
 Delta R.T.: -0.003 min
 Response: 18301699
 Conc: 422.36 ng/ml

Instrument :
 ECD_O
 ClientSampleId :



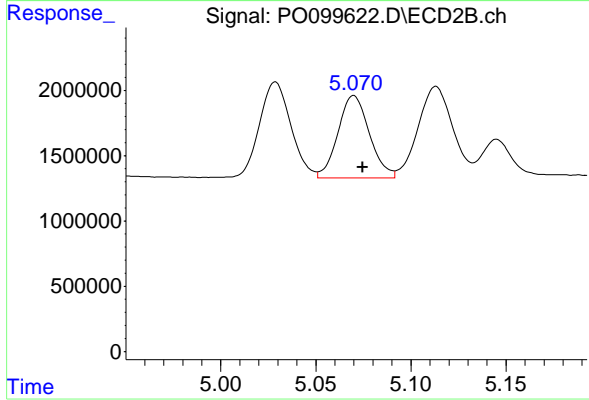
#5 AR-1016-3

R.T.: 5.029 min
 Delta R.T.: -0.004 min
 Response: 8559599
 Conc: 427.10 ng/ml



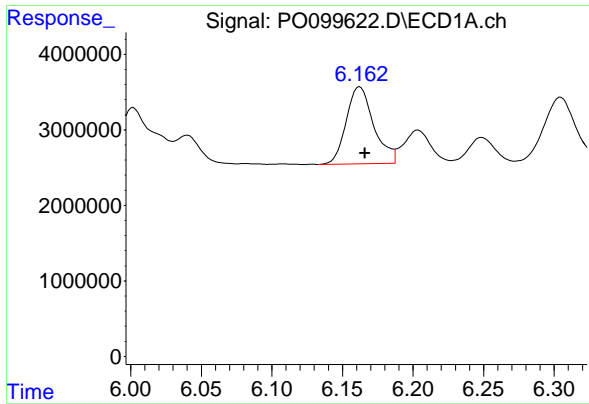
#6 AR-1016-4

R.T.: 5.863 min
 Delta R.T.: -0.004 min
 Response: 13800236
 Conc: 444.07 ng/ml



#6 AR-1016-4

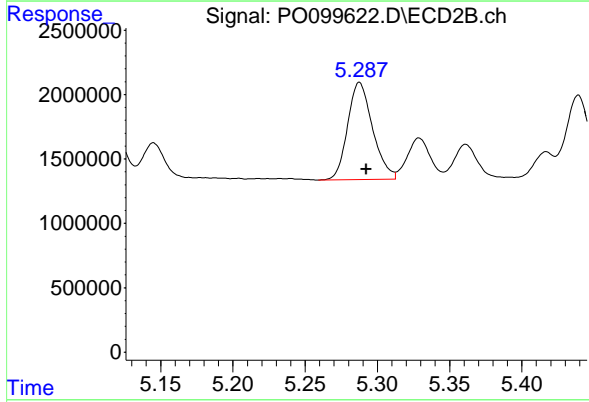
R.T.: 5.070 min
 Delta R.T.: -0.005 min
 Response: 7256091
 Conc: 436.63 ng/ml



#7 AR-1016-5

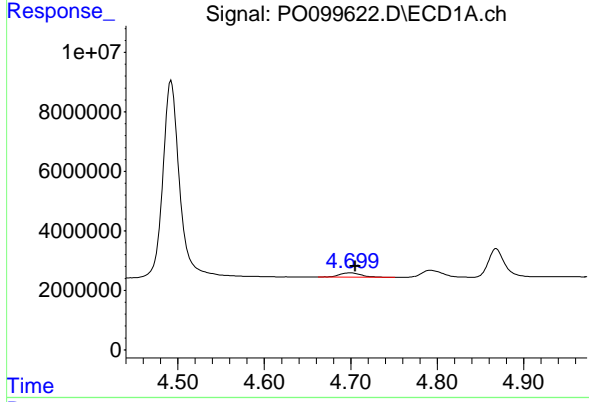
R.T.: 6.162 min
 Delta R.T.: -0.004 min
 Response: 13811732
 Conc: 454.16 ng/ml

Instrument :
 ECD_O
 ClientSampleId :



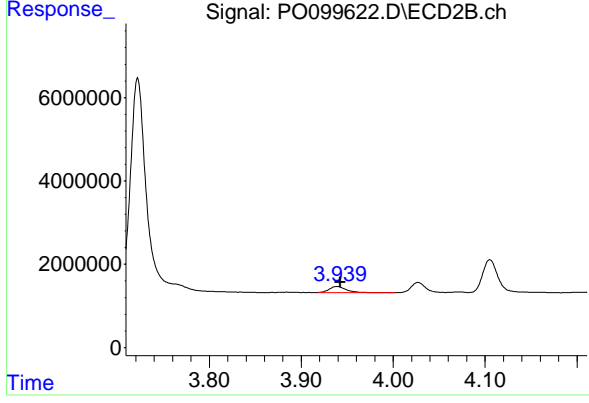
#7 AR-1016-5

R.T.: 5.288 min
 Delta R.T.: -0.005 min
 Response: 9086239
 Conc: 439.85 ng/ml



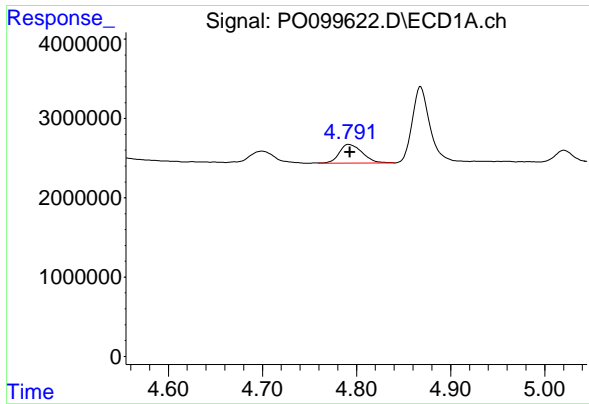
#8 AR-1221-1

R.T.: 4.700 min
 Delta R.T.: -0.006 min
 Response: 2638844
 Conc: 138.55 ng/ml



#8 AR-1221-1

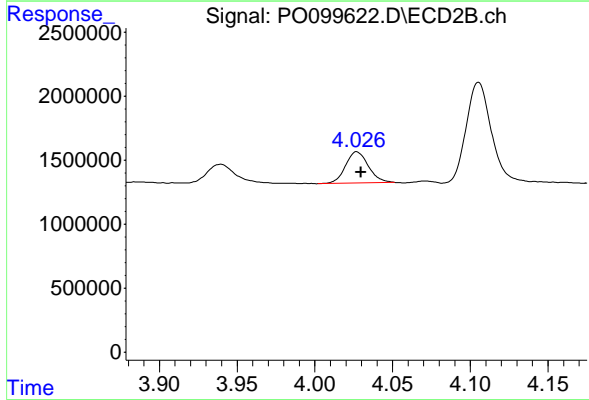
R.T.: 3.939 min
 Delta R.T.: -0.003 min
 Response: 1980839
 Conc: 135.20 ng/ml



#9 AR-1221-2

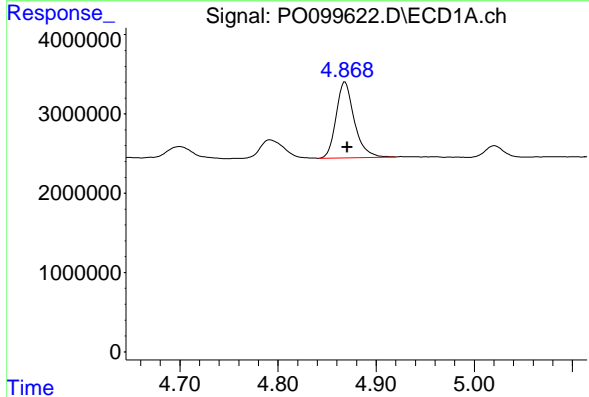
R.T.: 4.792 min
 Delta R.T.: -0.001 min
 Response: 3977481
 Conc: 282.36 ng/ml

Instrument :
 ECD_O
 ClientSampleId :



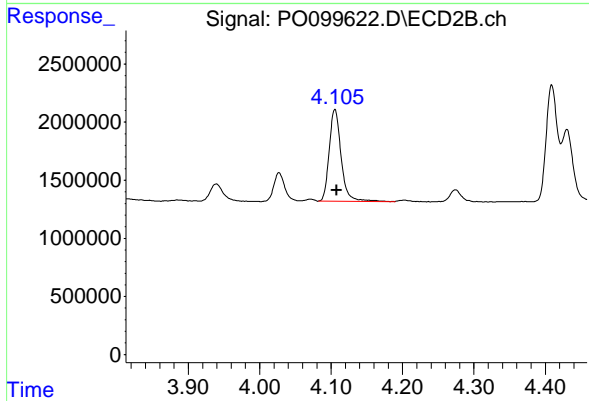
#9 AR-1221-2

R.T.: 4.027 min
 Delta R.T.: -0.003 min
 Response: 2490114
 Conc: 271.89 ng/ml



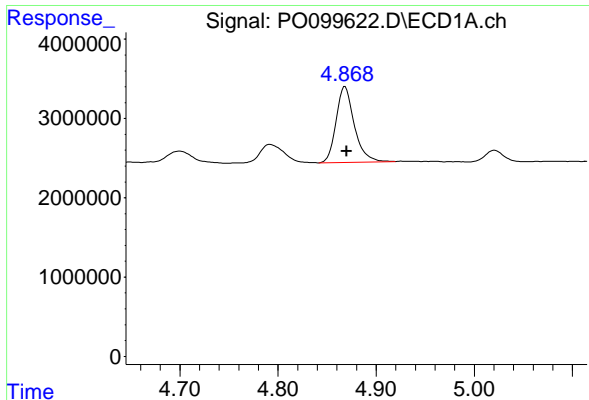
#10 AR-1221-3

R.T.: 4.868 min
 Delta R.T.: -0.002 min
 Response: 12294350
 Conc: 296.47 ng/ml



#10 AR-1221-3

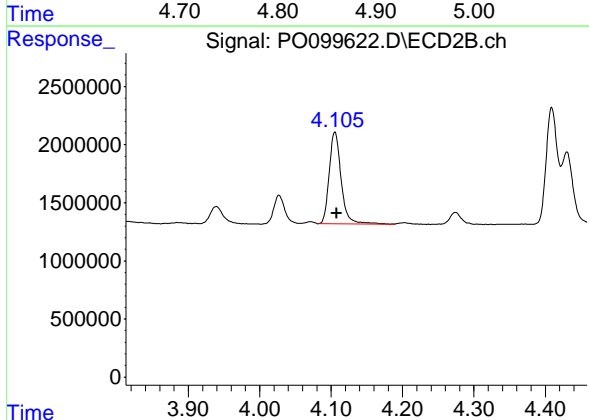
R.T.: 4.105 min
 Delta R.T.: -0.003 min
 Response: 9160650
 Conc: 296.00 ng/ml



#11 AR-1232-1

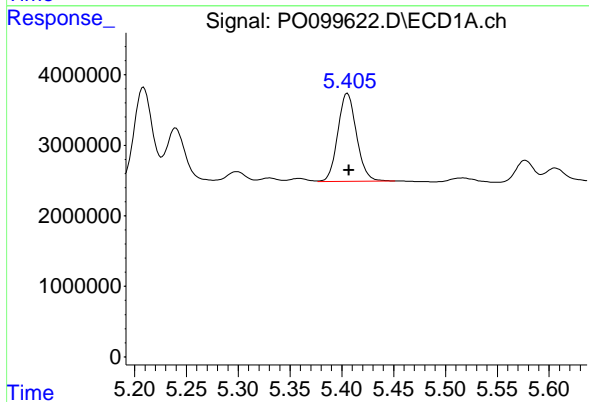
R.T.: 4.868 min
 Delta R.T.: -0.002 min
 Response: 12294350
 Conc: 364.96 ng/ml

Instrument :
 ECD_O
 ClientSampleId :



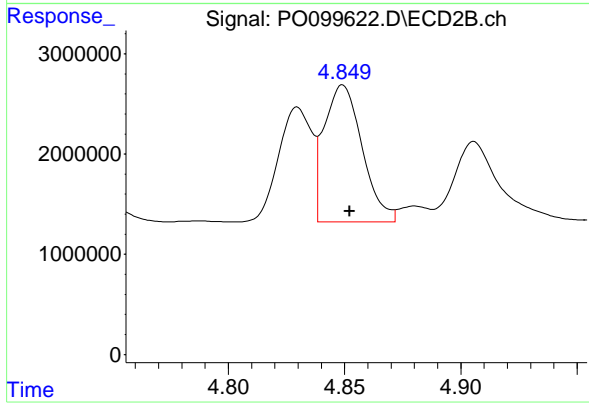
#11 AR-1232-1

R.T.: 4.105 min
 Delta R.T.: -0.002 min
 Response: 9160650
 Conc: 354.37 ng/ml



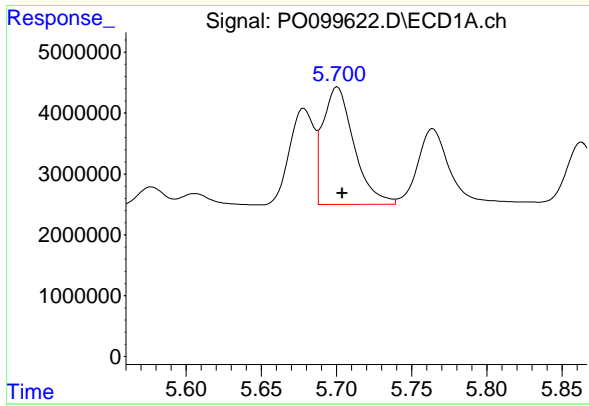
#12 AR-1232-2

R.T.: 5.405 min
 Delta R.T.: -0.002 min
 Response: 15716189
 Conc: 941.83 ng/ml



#12 AR-1232-2

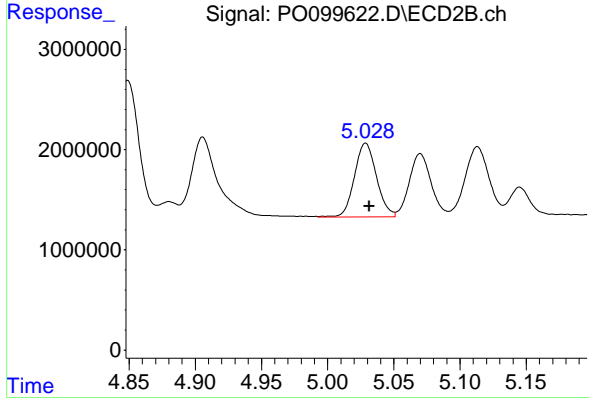
R.T.: 4.849 min
 Delta R.T.: -0.003 min
 Response: 15599385
 Conc: 900.53 ng/ml



#13 AR-1232-3

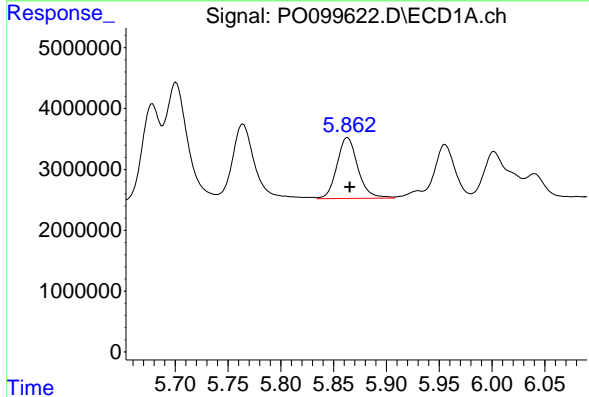
R.T.: 5.701 min
 Delta R.T.: -0.003 min
 Response: 27770934
 Conc: 978.95 ng/ml

Instrument :
 ECD_O
 ClientSampleId :



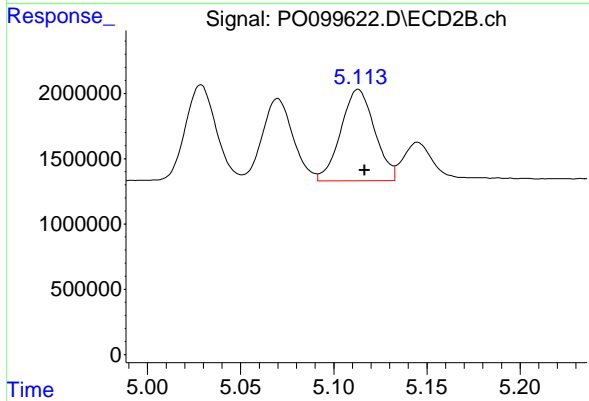
#13 AR-1232-3

R.T.: 5.029 min
 Delta R.T.: -0.003 min
 Response: 8559599
 Conc: 974.65 ng/ml



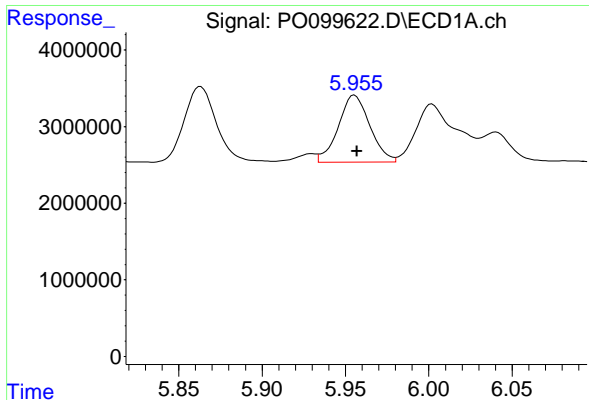
#14 AR-1232-4

R.T.: 5.863 min
 Delta R.T.: -0.003 min
 Response: 13800236
 Conc: 1023.18 ng/ml



#14 AR-1232-4

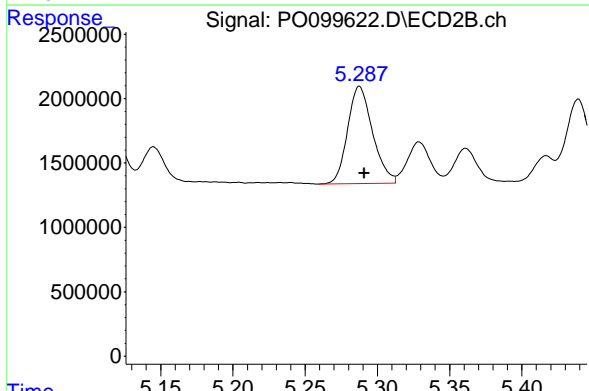
R.T.: 5.113 min
 Delta R.T.: -0.003 min
 Response: 8846545
 Conc: 1090.72 ng/ml



#15 AR-1232-5

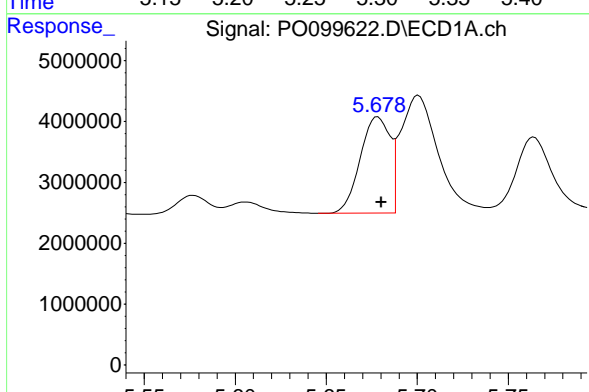
R.T.: 5.955 min
 Delta R.T.: -0.002 min
 Response: 11497941
 Conc: 1002.85 ng/ml

Instrument :
 ECD_O
 ClientSampleId :



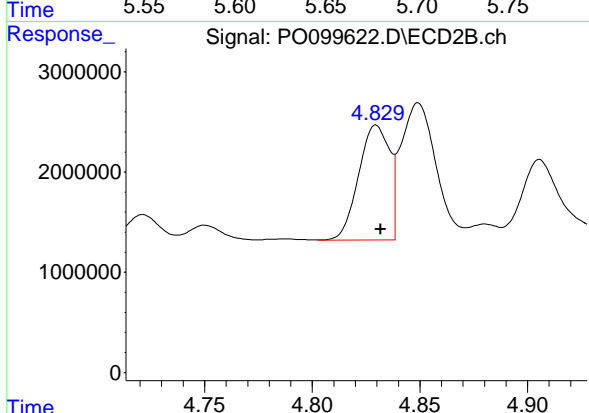
#15 AR-1232-5

R.T.: 5.288 min
 Delta R.T.: -0.003 min
 Response: 9086239
 Conc: 1062.22 ng/ml



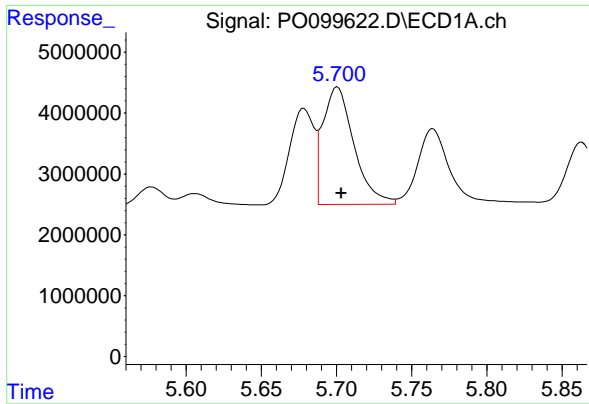
#16 AR-1242-1

R.T.: 5.678 min
 Delta R.T.: -0.002 min
 Response: 18005560
 Conc: 574.16 ng/ml



#16 AR-1242-1

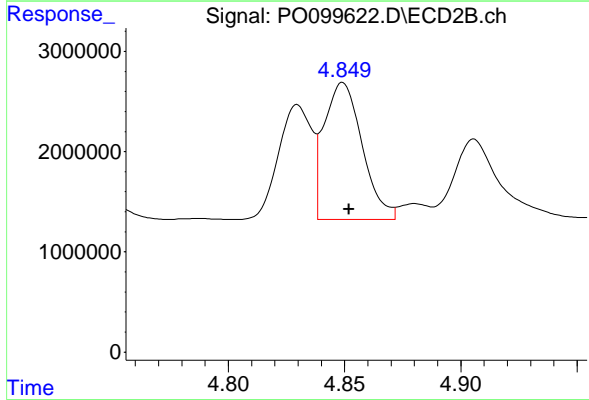
R.T.: 4.830 min
 Delta R.T.: -0.002 min
 Response: 11438792
 Conc: 516.93 ng/ml



#17 AR-1242-2

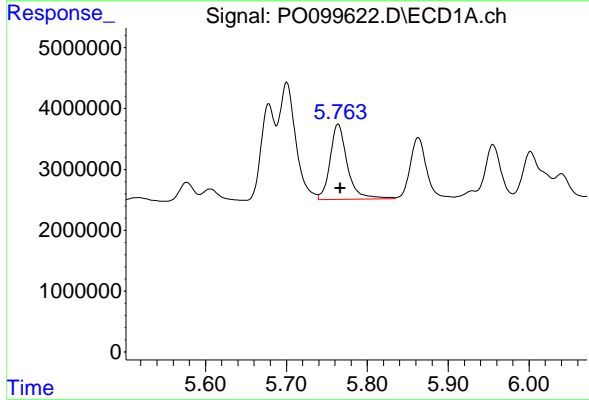
R.T.: 5.701 min
 Delta R.T.: -0.003 min
 Response: 27770934
 Conc: 538.37 ng/ml

Instrument :
 ECD_O
 ClientSampleId :



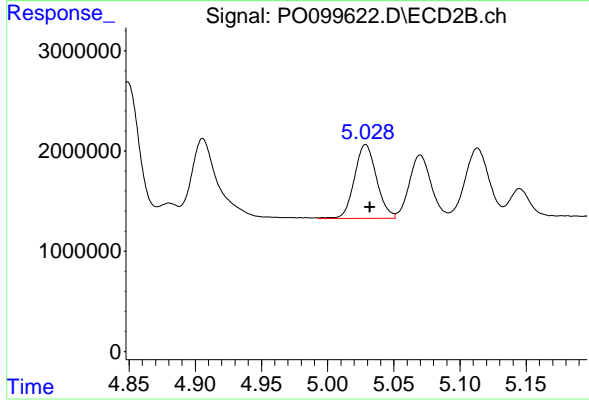
#17 AR-1242-2

R.T.: 4.849 min
 Delta R.T.: -0.003 min
 Response: 15599385
 Conc: 523.90 ng/ml



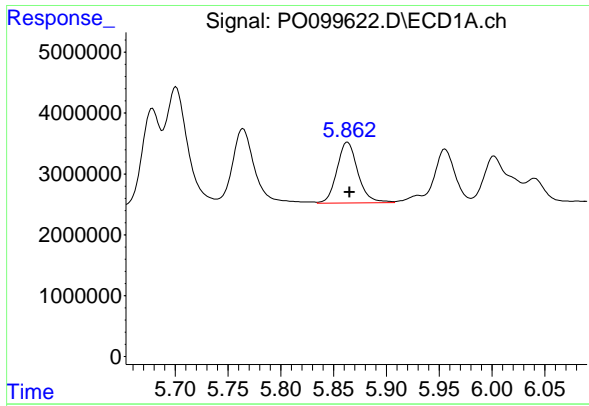
#18 AR-1242-3

R.T.: 5.764 min
 Delta R.T.: -0.002 min
 Response: 18301699
 Conc: 525.13 ng/ml



#18 AR-1242-3

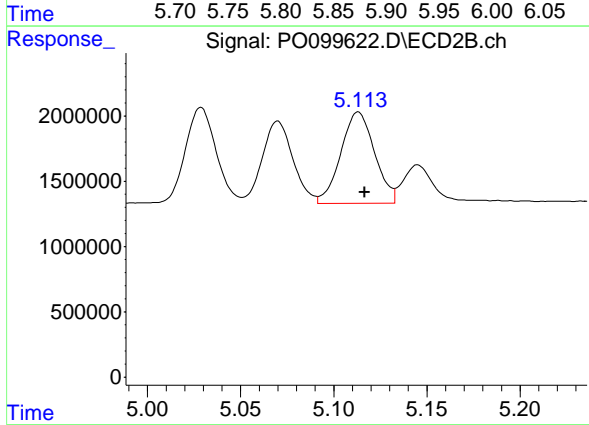
R.T.: 5.029 min
 Delta R.T.: -0.003 min
 Response: 8559599
 Conc: 518.81 ng/ml



#19 AR-1242-4

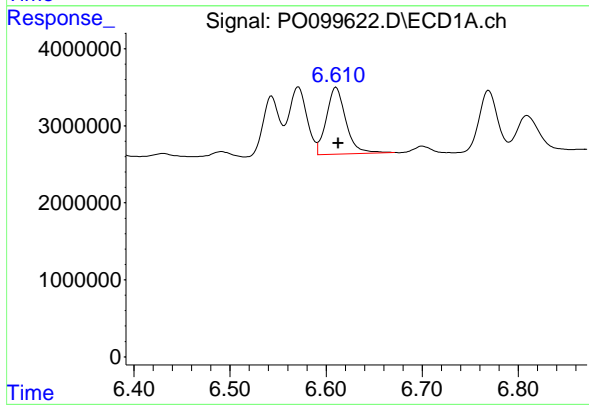
R.T.: 5.863 min
 Delta R.T.: -0.002 min
 Response: 13800236
 Conc: 545.71 ng/ml

Instrument :
 ECD_O
 ClientSampleId :



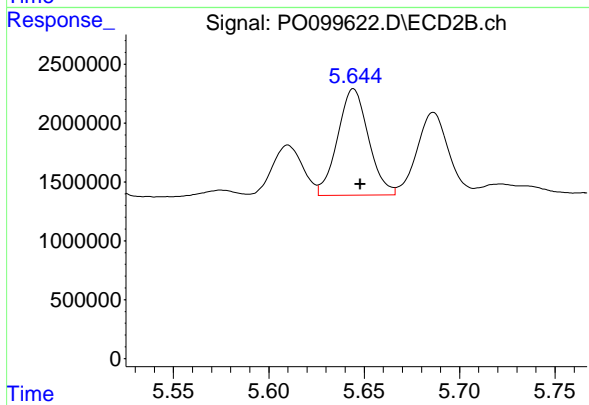
#19 AR-1242-4

R.T.: 5.113 min
 Delta R.T.: -0.003 min
 Response: 8846545
 Conc: 525.07 ng/ml



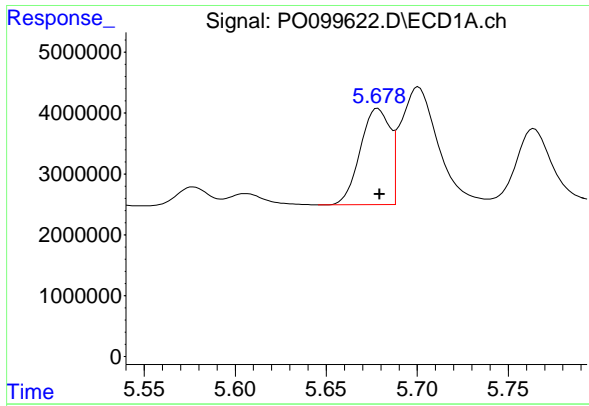
#20 AR-1242-5

R.T.: 6.611 min
 Delta R.T.: -0.002 min
 Response: 12156475
 Conc: 594.18 ng/ml



#20 AR-1242-5

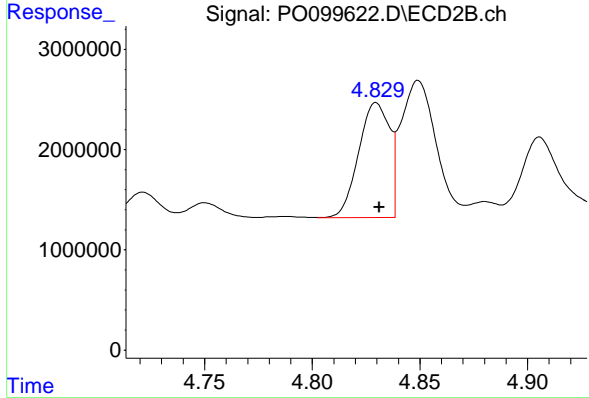
R.T.: 5.644 min
 Delta R.T.: -0.004 min
 Response: 10225182
 Conc: 585.73 ng/ml



#21 AR-1248-1

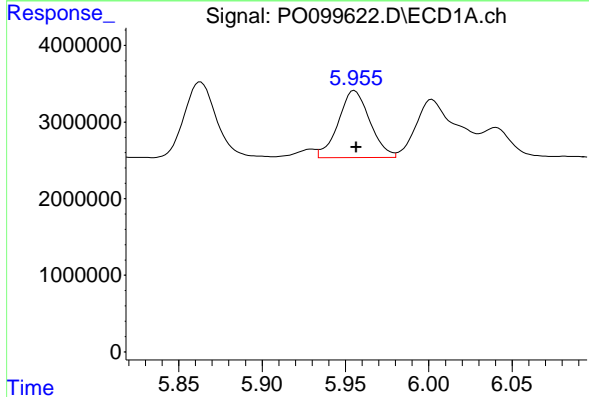
R.T.: 5.678 min
 Delta R.T.: 0.000 min
 Response: 18005560
 Conc: 762.49 ng/ml

Instrument :
 ECD_O
 ClientSampleId :



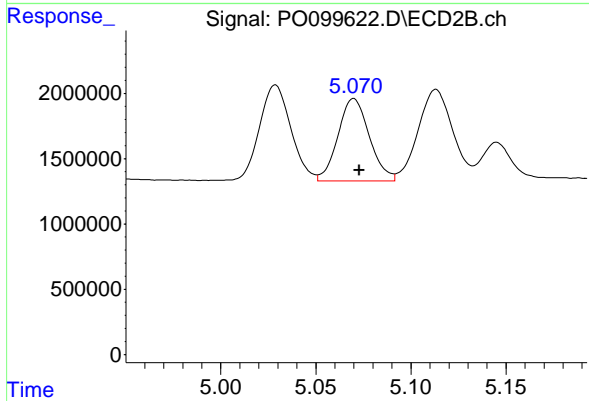
#21 AR-1248-1

R.T.: 4.830 min
 Delta R.T.: -0.001 min
 Response: 11438792
 Conc: 662.60 ng/ml



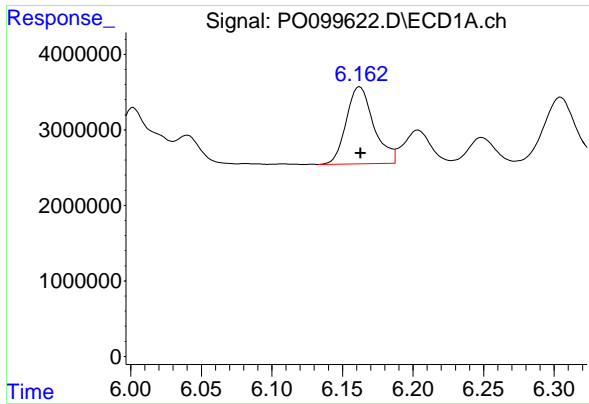
#22 AR-1248-2

R.T.: 5.955 min
 Delta R.T.: -0.001 min
 Response: 11497941
 Conc: 295.71 ng/ml



#22 AR-1248-2

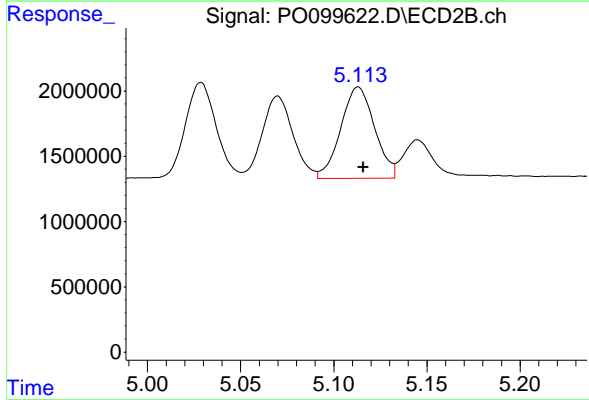
R.T.: 5.070 min
 Delta R.T.: -0.003 min
 Response: 7256091
 Conc: 308.22 ng/ml



#23 AR-1248-3

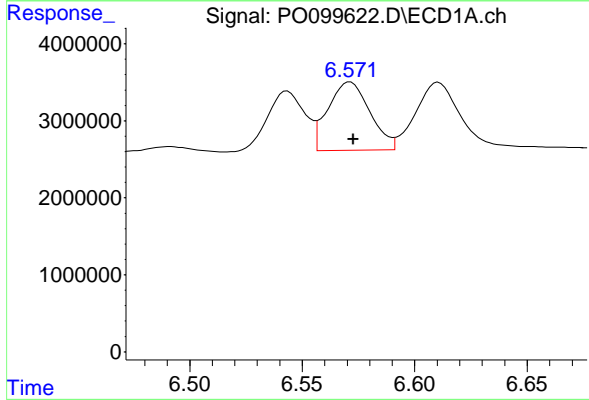
R.T.: 6.162 min
 Delta R.T.: 0.000 min
 Response: 13811732
 Conc: 332.90 ng/ml

Instrument :
 ECD_O
 ClientSampleId :



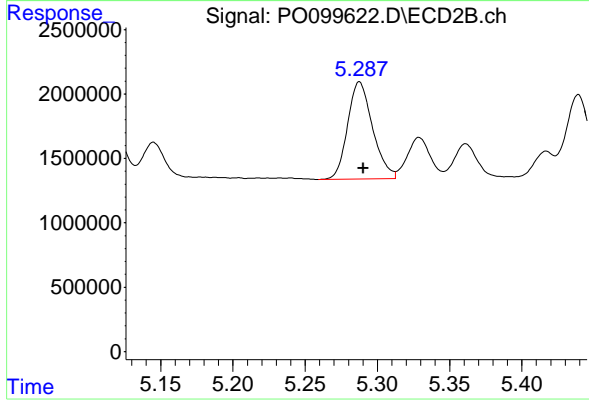
#23 AR-1248-3

R.T.: 5.113 min
 Delta R.T.: -0.003 min
 Response: 8846545
 Conc: 357.12 ng/ml



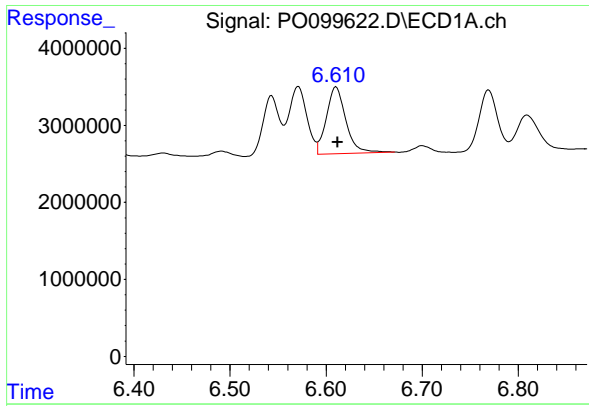
#24 AR-1248-4

R.T.: 6.571 min
 Delta R.T.: -0.001 min
 Response: 11557643
 Conc: 300.90 ng/ml



#24 AR-1248-4

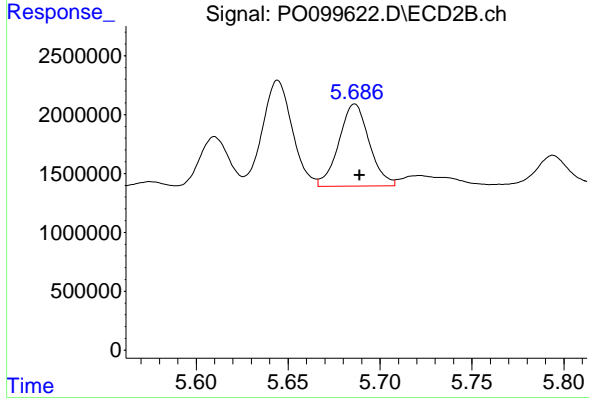
R.T.: 5.288 min
 Delta R.T.: -0.003 min
 Response: 9086239
 Conc: 329.57 ng/ml



#25 AR-1248-5

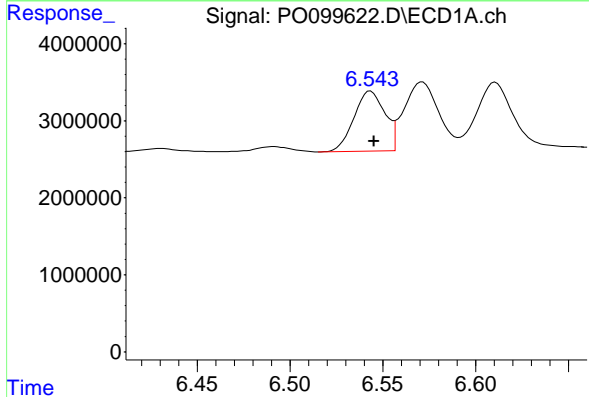
R.T.: 6.611 min
 Delta R.T.: -0.001 min
 Response: 12156475
 Conc: 320.58 ng/ml

Instrument :
 ECD_O
 ClientSampleId :



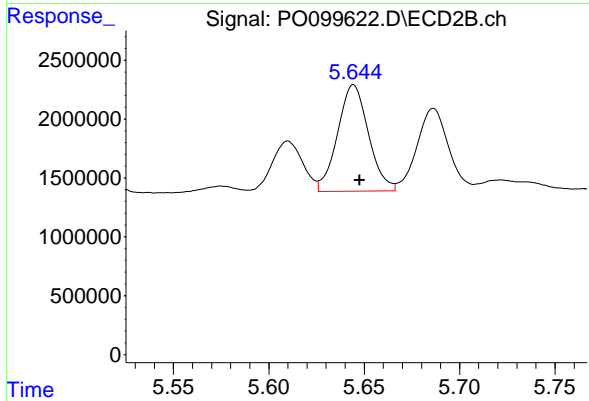
#25 AR-1248-5

R.T.: 5.686 min
 Delta R.T.: -0.003 min
 Response: 8022569
 Conc: 351.58 ng/ml



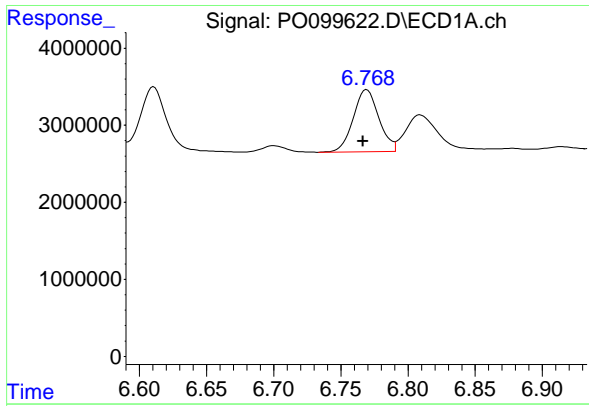
#26 AR-1254-1

R.T.: 6.543 min
 Delta R.T.: -0.002 min
 Response: 9055633
 Conc: 201.22 ng/ml



#26 AR-1254-1

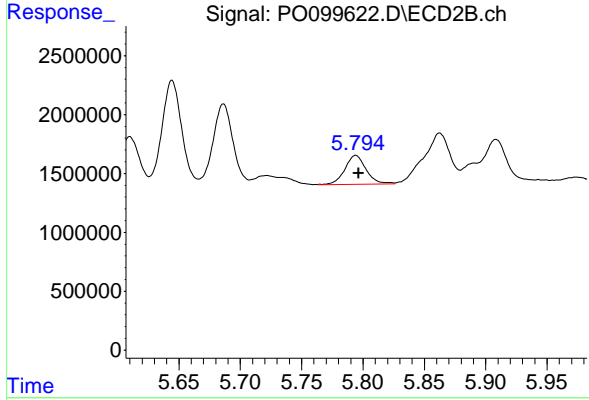
R.T.: 5.644 min
 Delta R.T.: -0.003 min
 Response: 10225182
 Conc: 281.11 ng/ml



#27 AR-1254-2

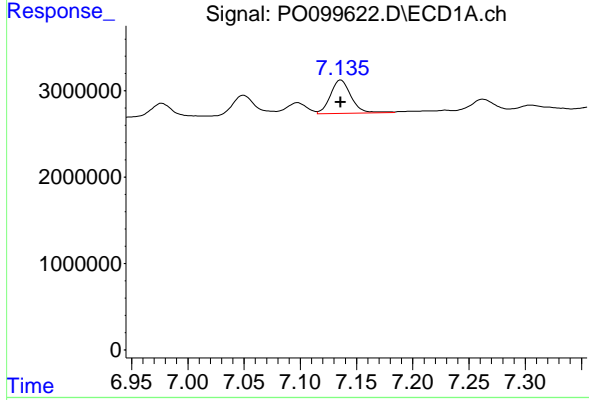
R.T.: 6.769 min
 Delta R.T.: 0.003 min
 Response: 10779054
 Conc: 170.93 ng/ml

Instrument :
 ECD_O
 ClientSampleId :



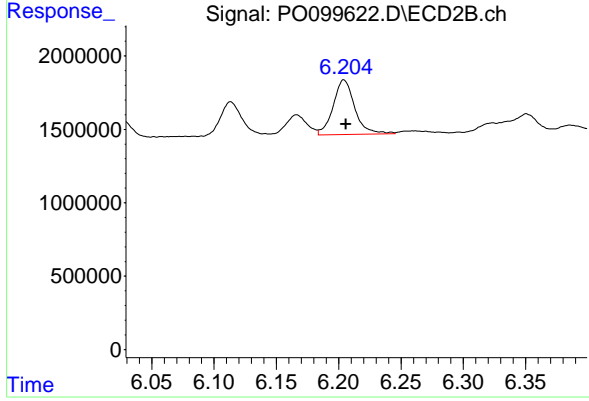
#27 AR-1254-2

R.T.: 5.794 min
 Delta R.T.: -0.003 min
 Response: 2982062
 Conc: 91.80 ng/ml



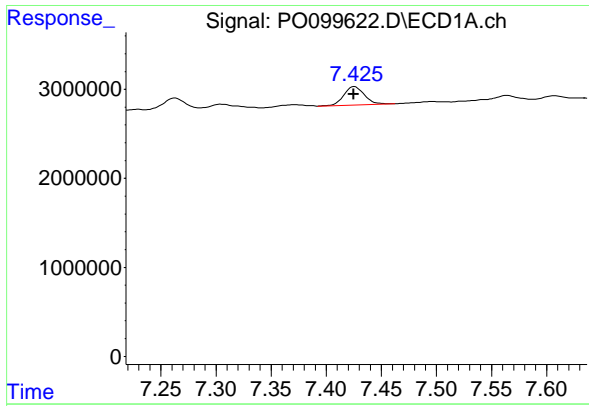
#28 AR-1254-3

R.T.: 7.136 min
 Delta R.T.: 0.000 min
 Response: 4939184
 Conc: 84.80 ng/ml



#28 AR-1254-3

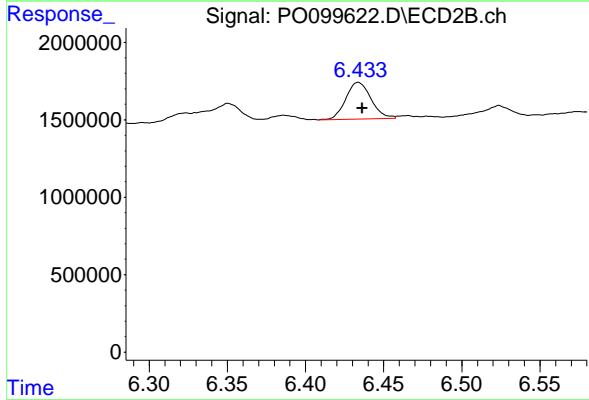
R.T.: 6.204 min
 Delta R.T.: -0.002 min
 Response: 4512380
 Conc: 83.22 ng/ml



#29 AR-1254-4

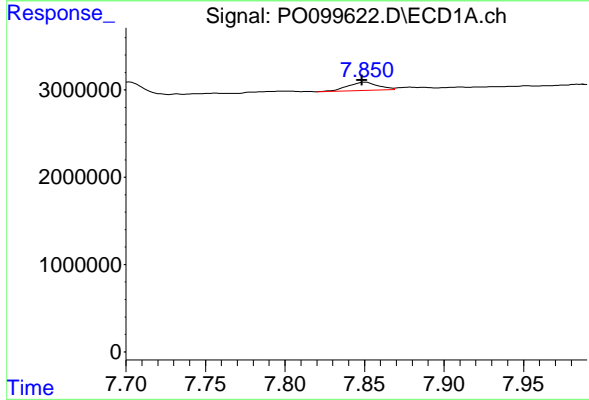
R.T.: 7.425 min
Delta R.T.: 0.000 min
Response: 2692763
Conc: 79.01 ng/ml

Instrument :
ECD_O
ClientSampleId :



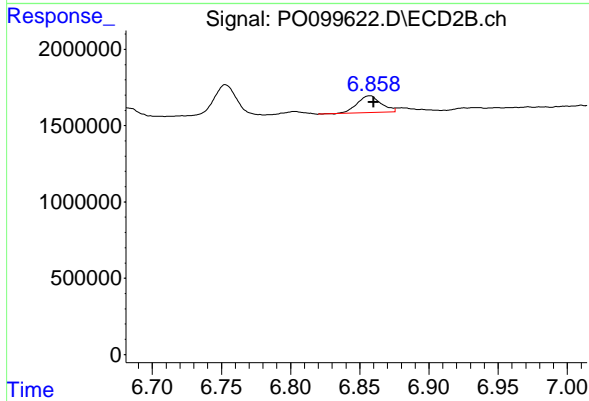
#29 AR-1254-4

R.T.: 6.434 min
Delta R.T.: -0.003 min
Response: 2653446
Conc: 94.22 ng/ml



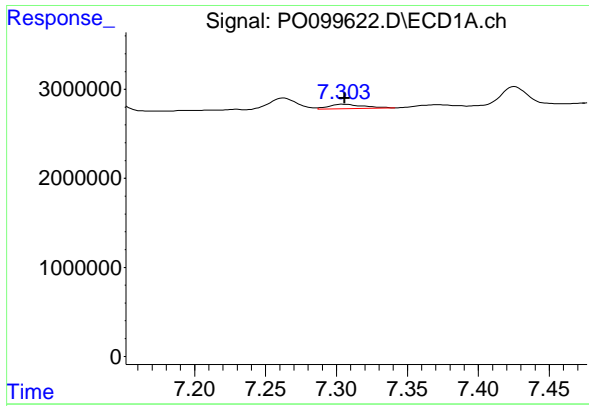
#30 AR-1254-5

R.T.: 7.850 min
Delta R.T.: 0.002 min
Response: 1243475
Conc: 31.78 ng/ml



#30 AR-1254-5

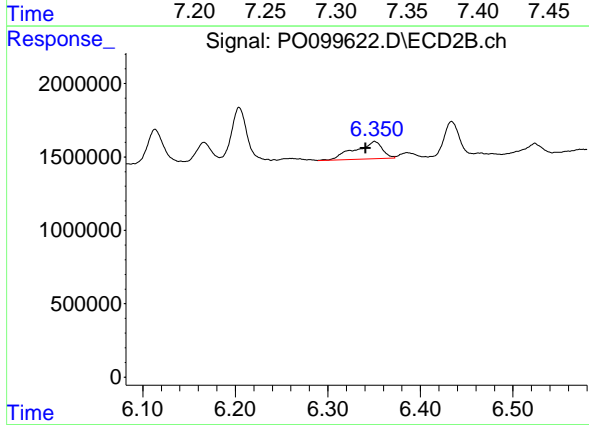
R.T.: 6.857 min
Delta R.T.: -0.003 min
Response: 1345198
Conc: 27.61 ng/ml



#31 AR-1260-1

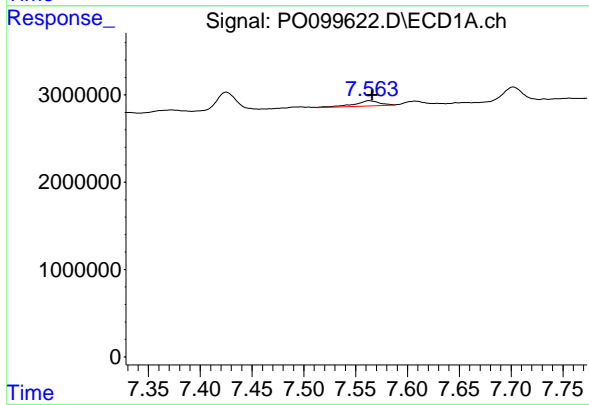
R.T.: 7.305 min
 Delta R.T.: -0.001 min
 Response: 854446
 Conc: 17.19 ng/ml

Instrument :
 ECD_O
 ClientSampleId :



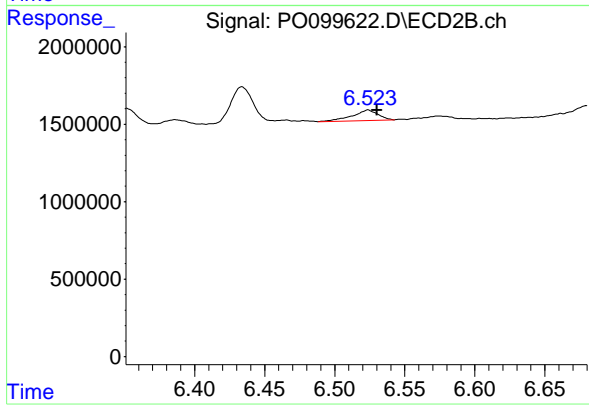
#31 AR-1260-1

R.T.: 6.351 min
 Delta R.T.: 0.010 min
 Response: 2413565
 Conc: 55.96 ng/ml



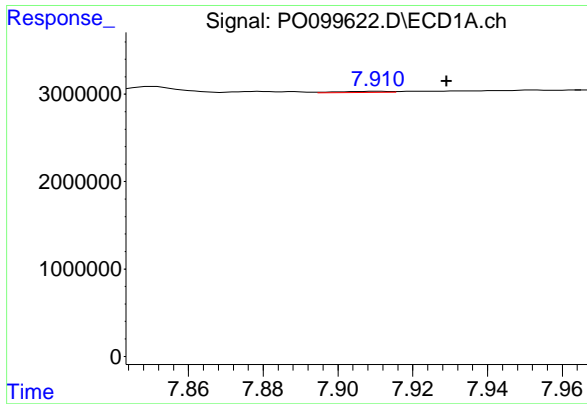
#32 AR-1260-2

R.T.: 7.564 min
 Delta R.T.: -0.002 min
 Response: 1036359
 Conc: 20.29 ng/ml



#32 AR-1260-2

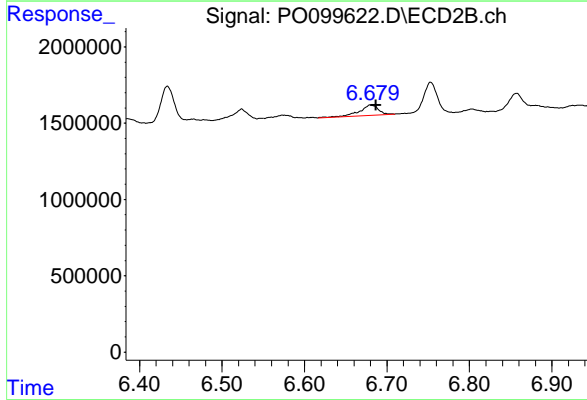
R.T.: 6.524 min
 Delta R.T.: -0.006 min
 Response: 856912
 Conc: 18.29 ng/ml



#33 AR-1260-3

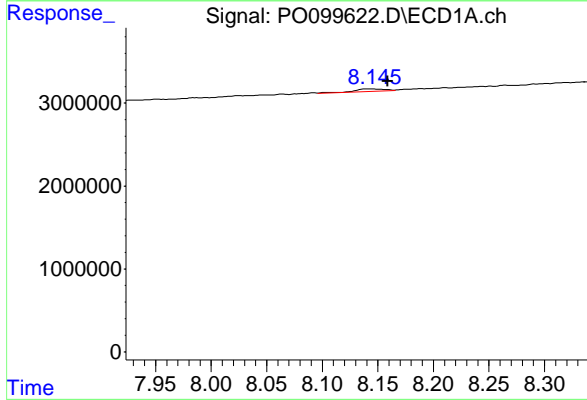
R.T.: 7.911 min
 Delta R.T.: -0.018 min
 Response: 110155
 Conc: 3.07 ng/ml

Instrument :
 ECD_O
 ClientSampleId :



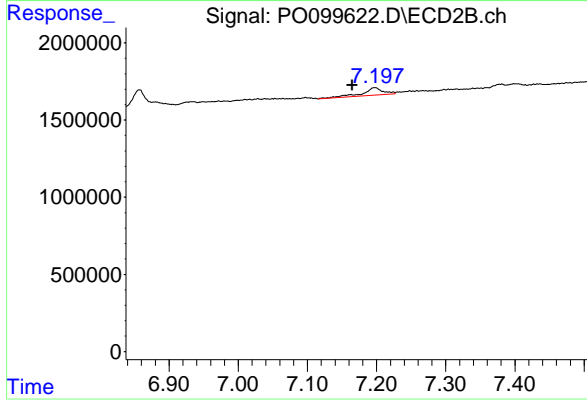
#33 AR-1260-3

R.T.: 6.680 min
 Delta R.T.: -0.007 min
 Response: 1064776
 Conc: 23.33 ng/ml



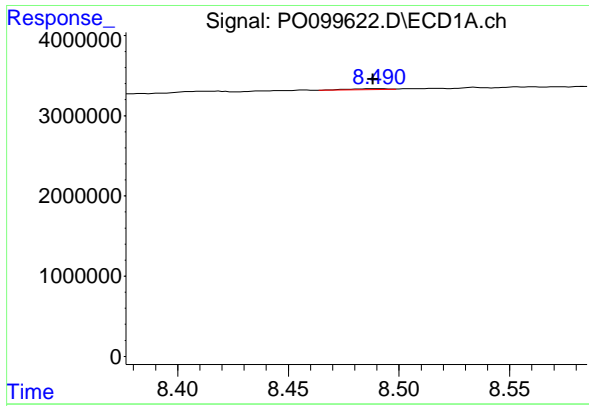
#34 AR-1260-4

R.T.: 8.145 min
 Delta R.T.: -0.014 min
 Response: 569464
 Conc: 14.43 ng/ml



#34 AR-1260-4

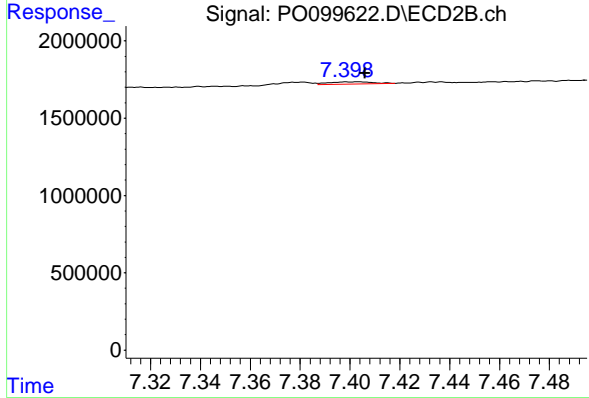
R.T.: 7.198 min
 Delta R.T.: 0.033 min
 Response: 1002516
 Conc: 27.28 ng/ml



#35 AR-1260-5

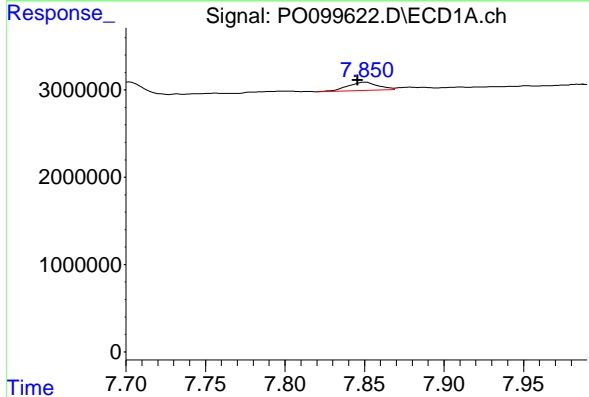
R.T.: 8.490 min
 Delta R.T.: 0.001 min
 Response: 154298
 Conc: 2.58 ng/ml

Instrument :
 ECD_O
 ClientSampleId :



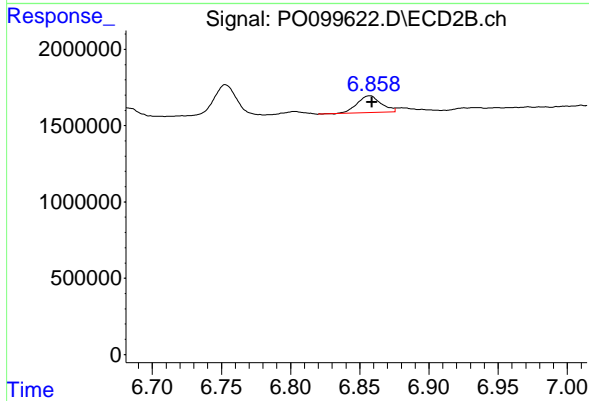
#35 AR-1260-5

R.T.: 7.403 min
 Delta R.T.: -0.003 min
 Response: 193106
 Conc: 2.65 ng/ml



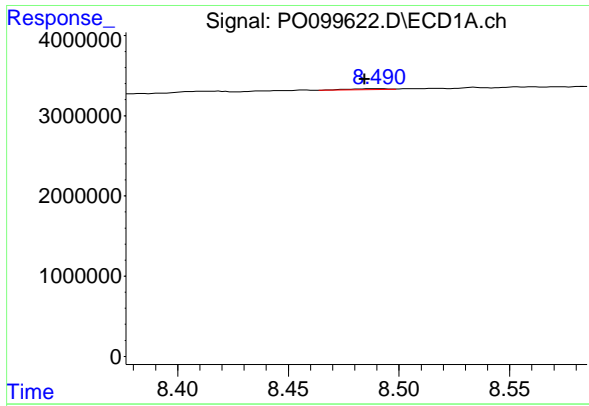
#36 AR-1262-1

R.T.: 7.850 min
 Delta R.T.: 0.005 min
 Response: 1243475
 Conc: 39.37 ng/ml



#36 AR-1262-1

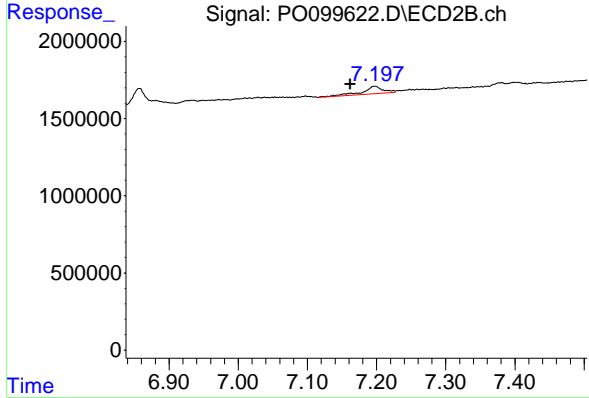
R.T.: 6.857 min
 Delta R.T.: -0.002 min
 Response: 1345198
 Conc: 54.73 ng/ml



#37 AR-1262-2

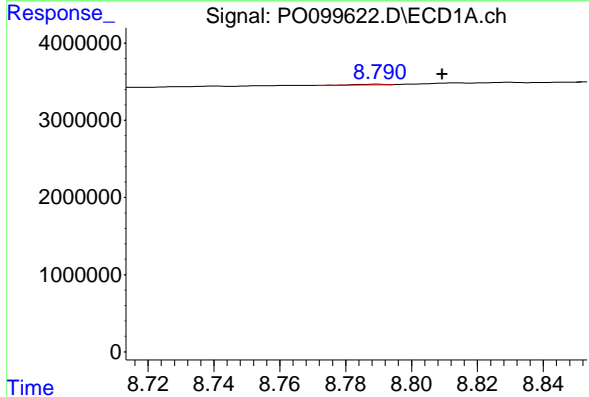
R.T.: 8.490 min
 Delta R.T.: 0.005 min
 Response: 154298
 Conc: 2.09 ng/ml

Instrument :
 ECD_O
 ClientSampleId :



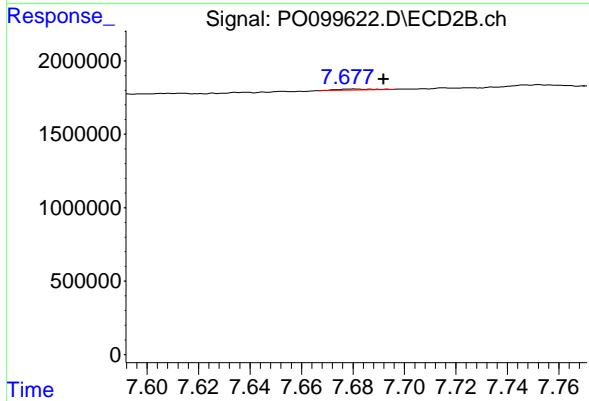
#37 AR-1262-2

R.T.: 7.198 min
 Delta R.T.: 0.035 min
 Response: 1002516
 Conc: 20.22 ng/ml



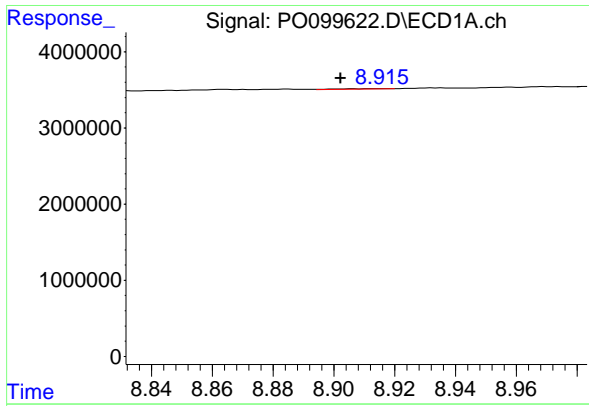
#38 AR-1262-3

R.T.: 8.790 min
 Delta R.T.: -0.019 min
 Response: 58800
 Conc: 1.14 ng/ml



#38 AR-1262-3

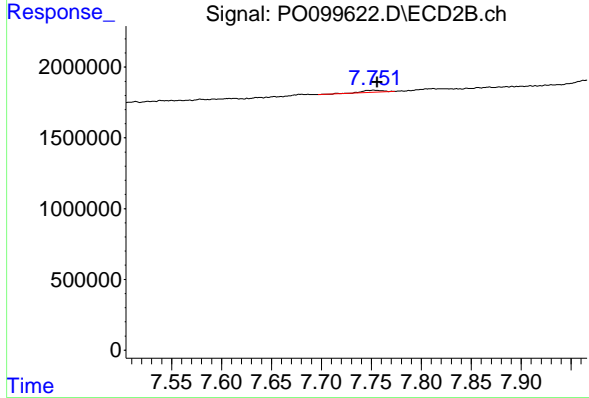
R.T.: 7.680 min
 Delta R.T.: -0.012 min
 Response: 73438
 Conc: 1.99 ng/ml



#39 AR-1262-4

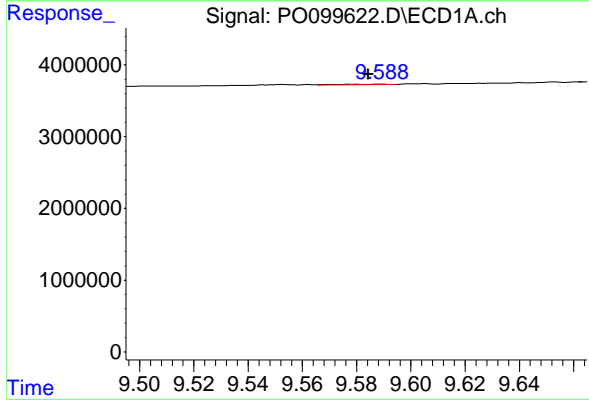
R.T.: 8.916 min
 Delta R.T.: 0.014 min
 Response: 71548
 Conc: 1.84 ng/ml

Instrument :
 ECD_O
 ClientSampleId :



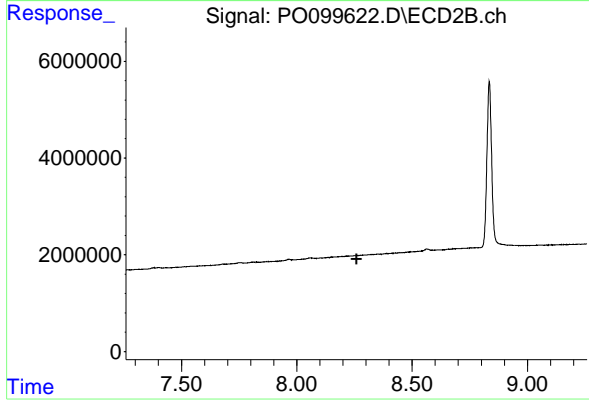
#39 AR-1262-4

R.T.: 7.752 min
 Delta R.T.: -0.004 min
 Response: 238450
 Conc: 3.71 ng/ml



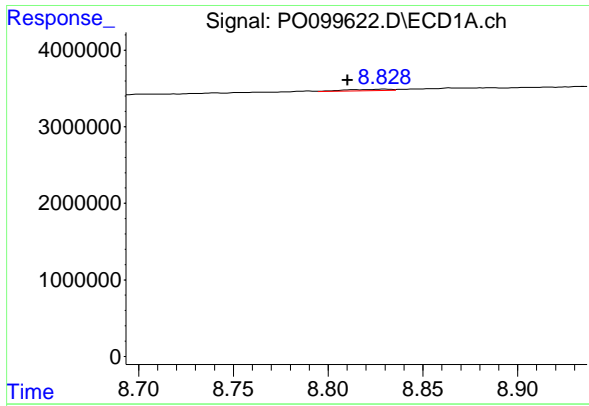
#40 AR-1262-5

R.T.: 9.589 min
 Delta R.T.: 0.005 min
 Response: 95006
 Conc: 4.47 ng/ml



#40 AR-1262-5

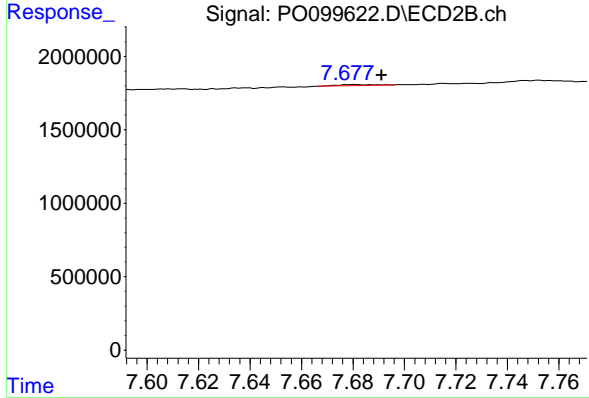
R.T.: 0.000 min
 Exp R.T. : 8.259 min
 Response: 0
 Conc: N.D.



#41 AR-1268-1

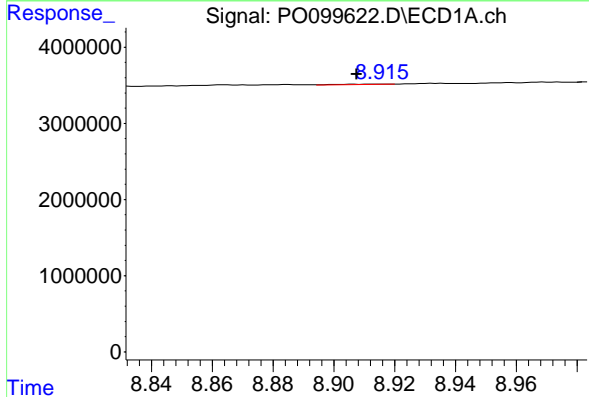
R.T.: 8.830 min
 Delta R.T.: 0.020 min
 Response: 250647
 Conc: 2.49 ng/ml

Instrument :
 ECD_O
 ClientSampleId :



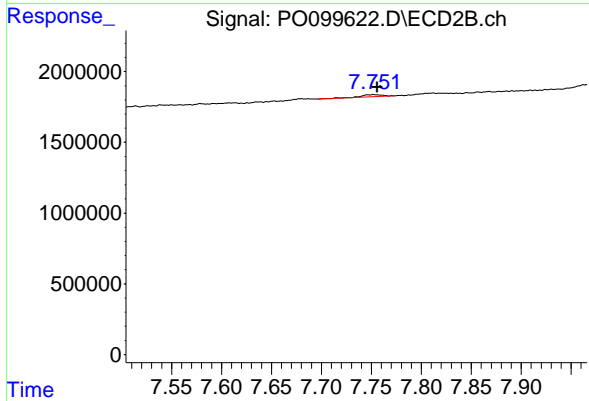
#41 AR-1268-1

R.T.: 7.680 min
 Delta R.T.: -0.011 min
 Response: 73438
 Conc: 0.67 ng/ml



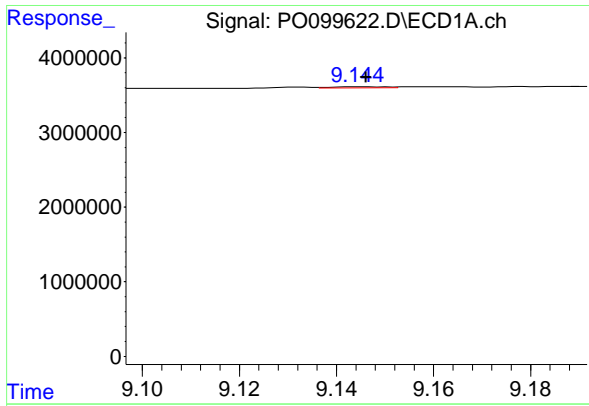
#42 AR-1268-2

R.T.: 8.916 min
 Delta R.T.: 0.008 min
 Response: 71548
 Conc: 0.84 ng/ml



#42 AR-1268-2

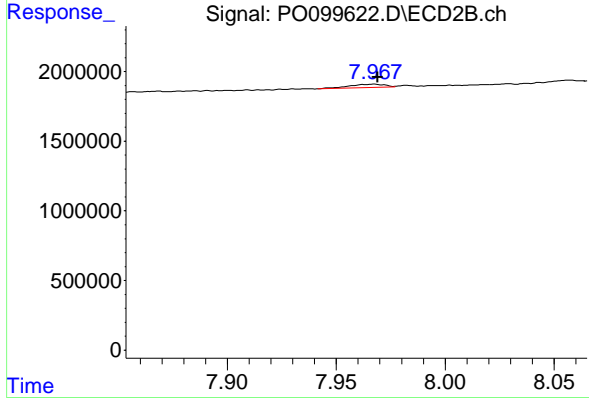
R.T.: 7.752 min
 Delta R.T.: -0.004 min
 Response: 238450
 Conc: 2.42 ng/ml



#43 AR-1268-3

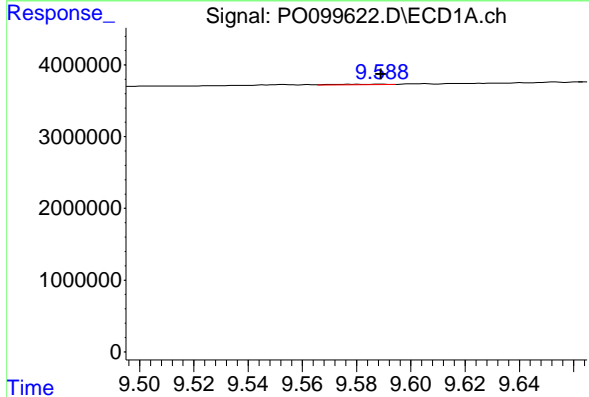
R.T.: 9.145 min
 Delta R.T.: -0.001 min
 Response: 117508
 Conc: 1.38 ng/ml

Instrument :
 ECD_O
 ClientSampleId :



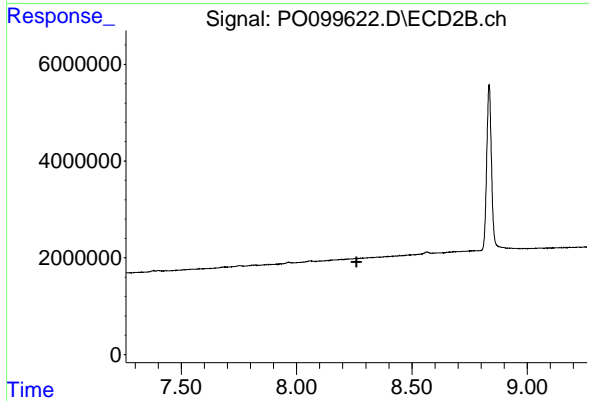
#43 AR-1268-3

R.T.: 7.967 min
 Delta R.T.: -0.002 min
 Response: 261143
 Conc: 2.76 ng/ml



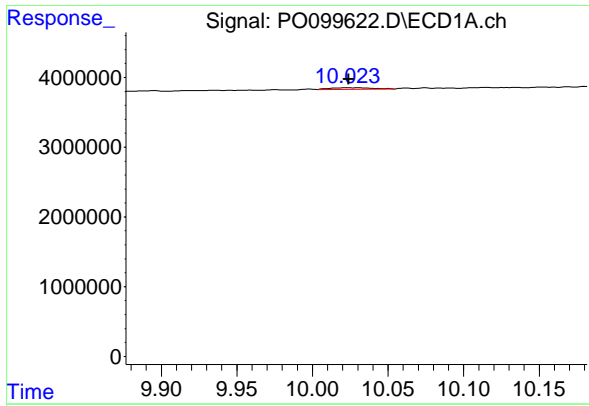
#44 AR-1268-4

R.T.: 9.589 min
 Delta R.T.: 0.000 min
 Response: 95006
 Conc: 3.91 ng/ml



#44 AR-1268-4

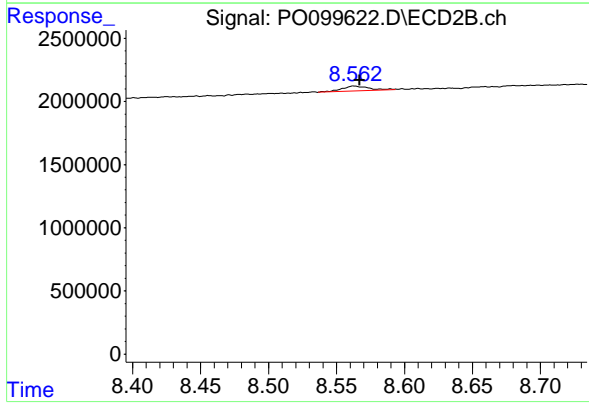
R.T.: 0.000 min
 Exp R.T. : 8.260 min
 Response: 0
 Conc: N.D.



#45 AR-1268-5

R.T.: 10.024 min
 Delta R.T.: 0.000 min
 Response: 478368
 Conc: 2.25 ng/ml

Instrument :
 ECD_O
 ClientSampleId :



#45 AR-1268-5

R.T.: 8.563 min
 Delta R.T.: -0.004 min
 Response: 560211
 Conc: 2.23 ng/ml