

Data Path : Z:\pestpcbsrv\HPCHEM1\ECD_O\Data\PO111023\
 Data File : PO099649.D
 Signal(s) : Signal #1: ECD1A.ch Signal #2: ECD2B.ch
 Acq On : 11 Nov 2023 12:44
 Operator : YP/AJ
 Sample : AR1242CCC500
 Misc :
 ALS Vial : 4 Sample Multiplier: 1

Instrument :
 ECD_O
 ClientSampleId :
 AR1242CCC500

Integration File signal 1: autoint1.e
 Integration File signal 2: autoint2.e
 Quant Time: Nov 12 23:33:37 2023
 Quant Method : Z:\pestpcbsrv\HPCHEM1\ECD_O\methods\PO110923.M
 Quant Title : GC EXTRACTABLES
 QLast Update : Fri Nov 10 11:13:12 2023
 Response via : Initial Calibration
 Integrator: ChemStation

Volume Inj. : 2 µl
 Signal #1 Phase : ZB-MR1 Signal #2 Phase: ZB-MR2
 Signal #1 Info : 30Mx0.32mmx 0.50µ Signal #2 Info : 30M x 0.32mm x 0.25µm

Compound	RT#1	RT#2	Resp#1	Resp#2	ng/ml	ng/ml

System Monitoring Compounds						
1) SA Tetrachlo...	4.491	3.722	86024866	63768882	49.971	52.600
2) SA Decachlor...	10.371	8.832	48836286	51673815	76.509	70.351
Target Compounds						
16) L4 AR-1242-1	5.677	4.828	18005300	11421342	574.156	516.139
17) L4 AR-1242-2	5.700	4.848	27900509	15927758	540.879	534.930
18) L4 AR-1242-3	5.763	5.027	18557719	8657909	532.480	524.766
19) L4 AR-1242-4	5.862	5.112	14051445	8889908	555.644	527.648
20) L4 AR-1242-5	6.609	5.643	12383271	10236558	605.262	586.385

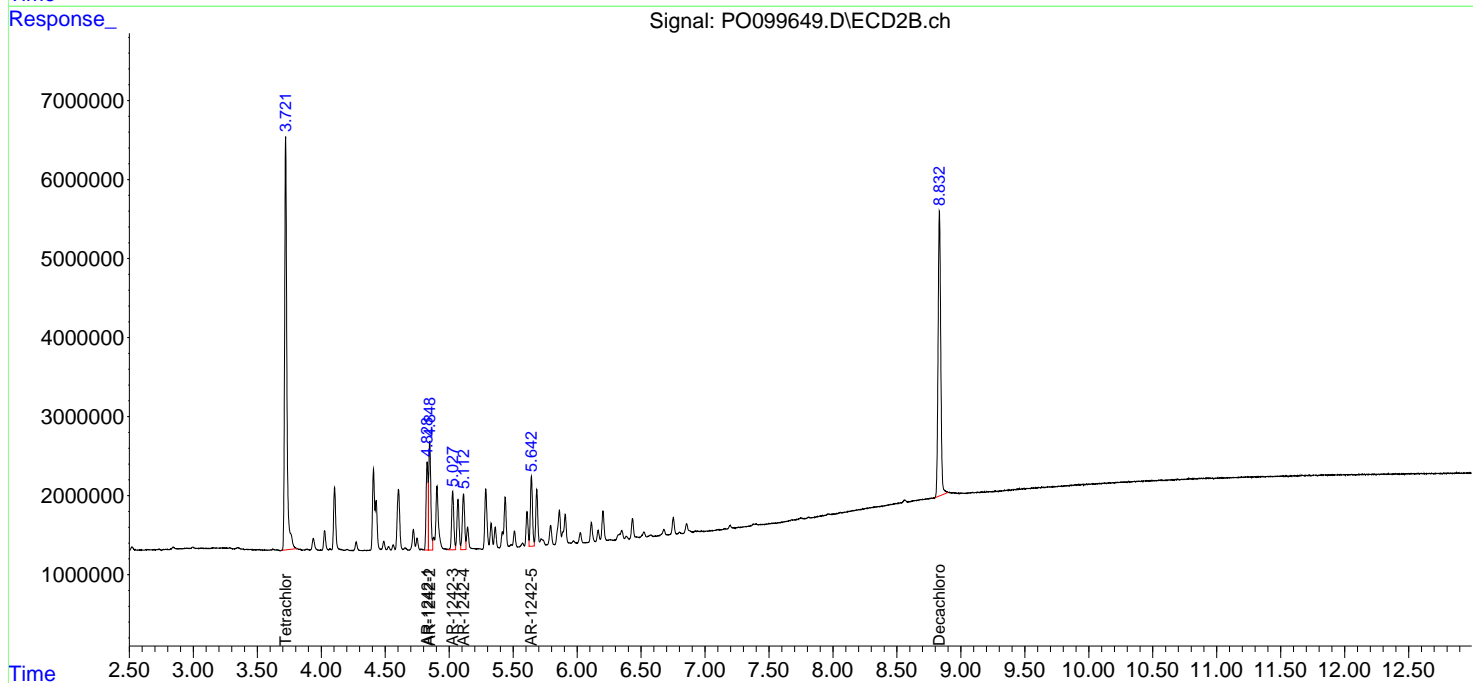
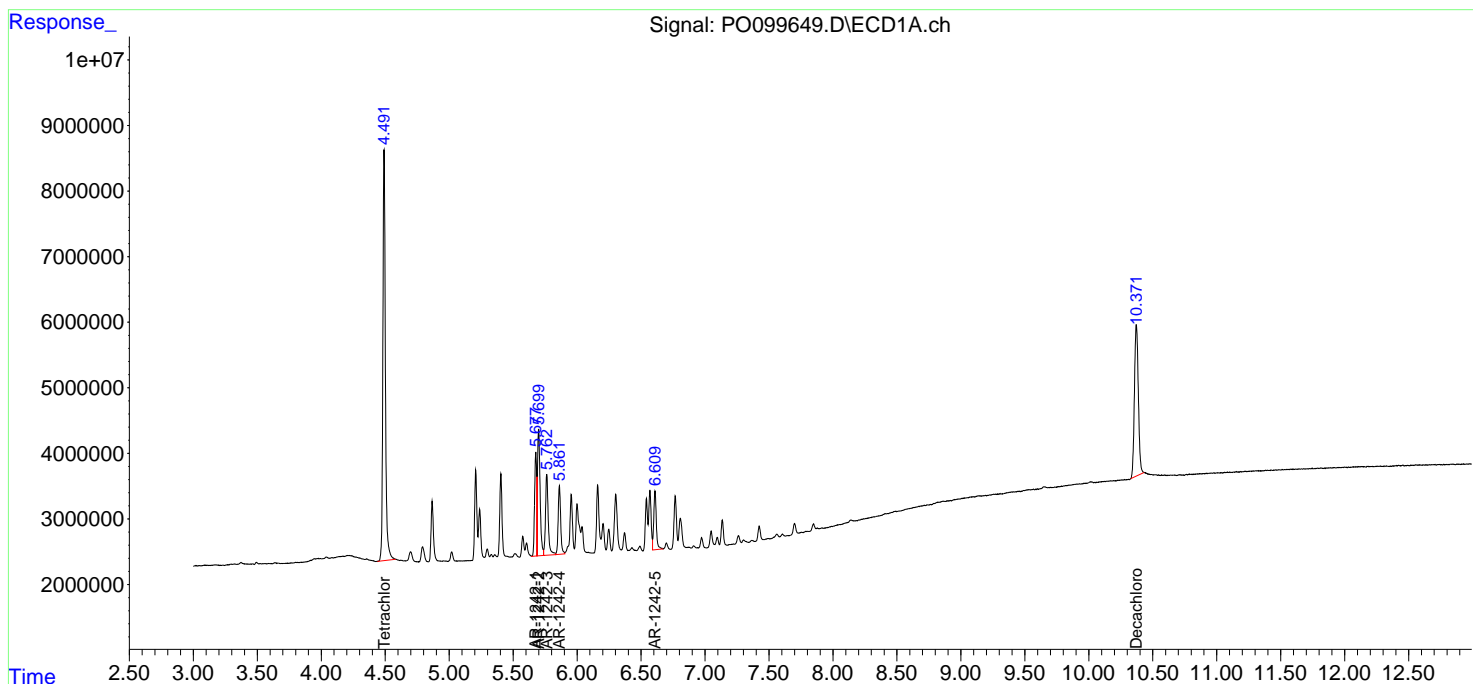
(f)=RT Delta > 1/2 Window (#)=Amounts differ by > 25% (m)=manual int.

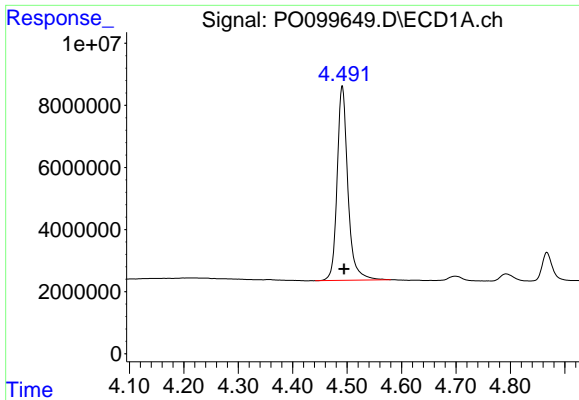
Data Path : Z:\pestpcbsrv\HPCHEM1\ECD_O\Data\PO111023\
 Data File : PO099649.D
 Signal(s) : Signal #1: ECD1A.ch Signal #2: ECD2B.ch
 Acq On : 11 Nov 2023 12:44
 Operator : YP/AJ
 Sample : AR1242CCC500
 Misc :
 ALS Vial : 4 Sample Multiplier: 1

Instrument :
 ECD_O
 ClientSampleId :
 AR1242CCC500

Integration File signal 1: autoint1.e
 Integration File signal 2: autoint2.e
 Quant Time: Nov 12 23:33:37 2023
 Quant Method : Z:\pestpcbsrv\HPCHEM1\ECD_O\methods\PO110923.M
 Quant Title : GC EXTRACTABLES
 QLast Update : Fri Nov 10 11:13:12 2023
 Response via : Initial Calibration
 Integrator: ChemStation

Volume Inj. : 2 µl
 Signal #1 Phase : ZB-MR1 Signal #2 Phase: ZB-MR2
 Signal #1 Info : 30Mx0.32mmx 0.50µ Signal #2 Info : 30M x 0.32mm x 0.25µm

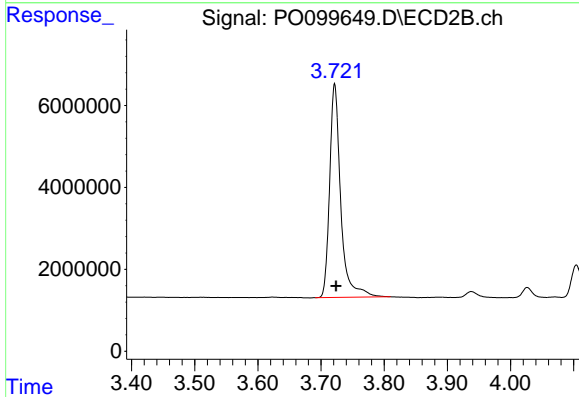




#1 Tetrachloro-m-xylene

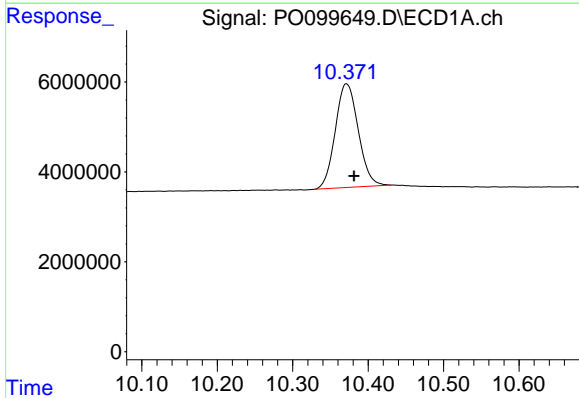
R.T.: 4.491 min
 Delta R.T.: -0.003 min
 Response: 86024866
 Conc: 49.97 ng/ml

Instrument :
 ECD_O
 ClientSampleId :
 AR1242CCC500



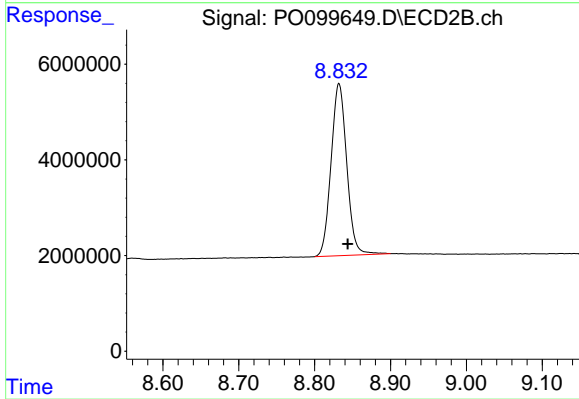
#1 Tetrachloro-m-xylene

R.T.: 3.722 min
 Delta R.T.: -0.002 min
 Response: 63768882
 Conc: 52.60 ng/ml



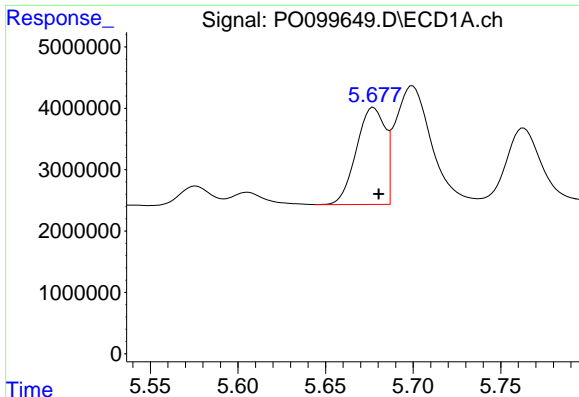
#2 Decachlorobiphenyl

R.T.: 10.371 min
 Delta R.T.: -0.010 min
 Response: 48836286
 Conc: 76.51 ng/ml



#2 Decachlorobiphenyl

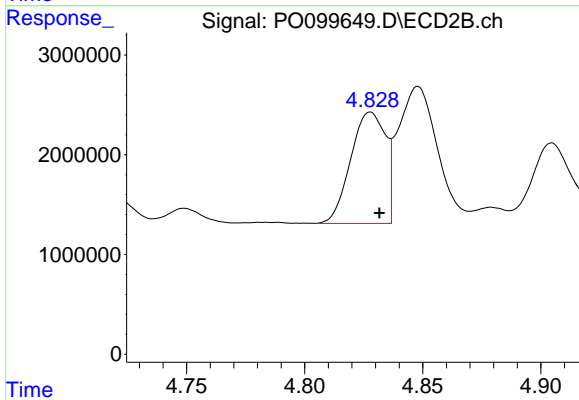
R.T.: 8.832 min
 Delta R.T.: -0.012 min
 Response: 51673815
 Conc: 70.35 ng/ml



#16 AR-1242-1

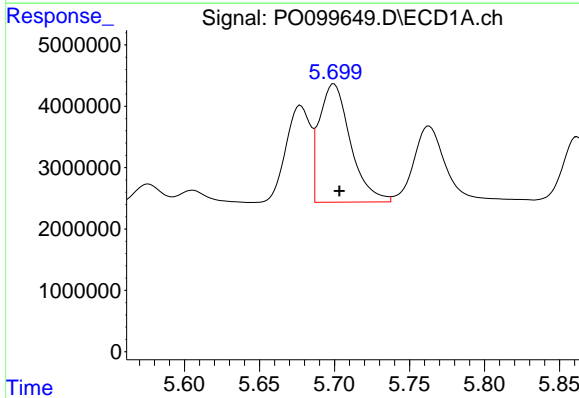
R.T.: 5.677 min
 Delta R.T.: -0.003 min
 Response: 18005300
 Conc: 574.16 ng/ml

Instrument :
 ECD_O
 ClientSampleId :
 AR1242CCC500



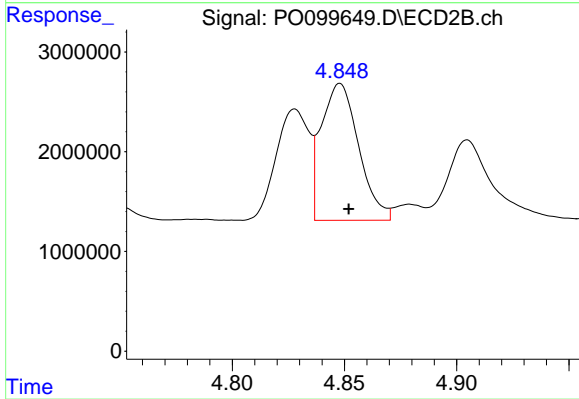
#16 AR-1242-1

R.T.: 4.828 min
 Delta R.T.: -0.004 min
 Response: 11421342
 Conc: 516.14 ng/ml



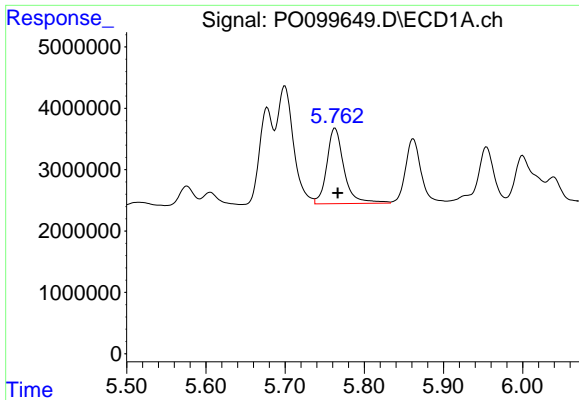
#17 AR-1242-2

R.T.: 5.700 min
 Delta R.T.: -0.004 min
 Response: 27900509
 Conc: 540.88 ng/ml



#17 AR-1242-2

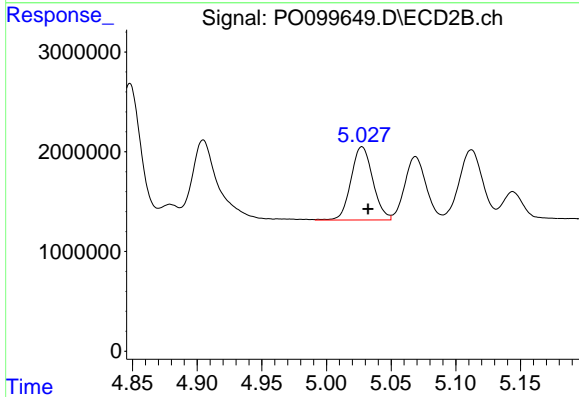
R.T.: 4.848 min
 Delta R.T.: -0.004 min
 Response: 15927758
 Conc: 534.93 ng/ml



#18 AR-1242-3

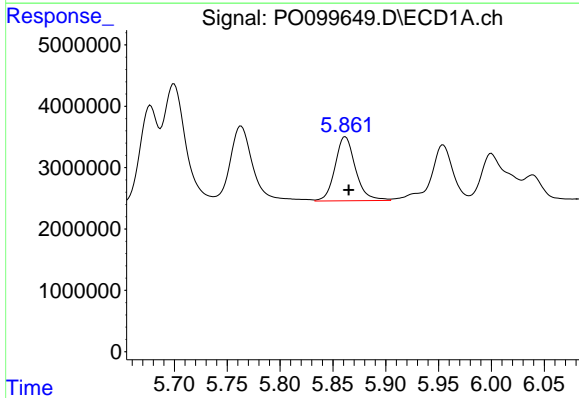
R.T.: 5.763 min
 Delta R.T.: -0.003 min
 Response: 18557719
 Conc: 532.48 ng/ml

Instrument :
 ECD_O
 ClientSampleId :
 AR1242CCC500



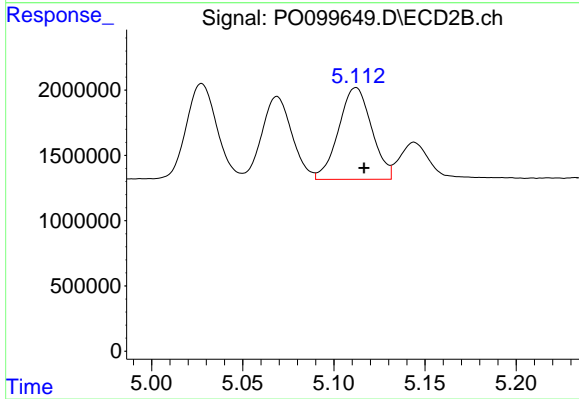
#18 AR-1242-3

R.T.: 5.027 min
 Delta R.T.: -0.005 min
 Response: 8657909
 Conc: 524.77 ng/ml



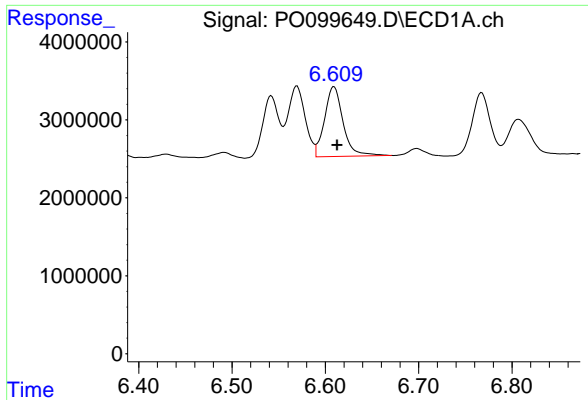
#19 AR-1242-4

R.T.: 5.862 min
 Delta R.T.: -0.003 min
 Response: 14051445
 Conc: 555.64 ng/ml



#19 AR-1242-4

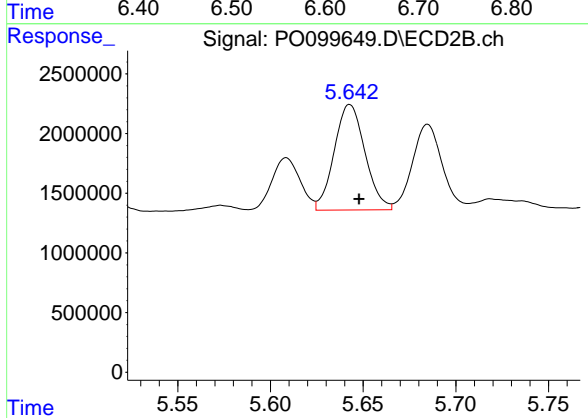
R.T.: 5.112 min
 Delta R.T.: -0.004 min
 Response: 8889908
 Conc: 527.65 ng/ml



#20 AR-1242-5

R.T.: 6.609 min
Delta R.T.: -0.003 min
Response: 12383271
Conc: 605.26 ng/ml

Instrument :
ECD_O
ClientSampleId :
AR1242CCC500



#20 AR-1242-5

R.T.: 5.643 min
Delta R.T.: -0.005 min
Response: 10236558
Conc: 586.38 ng/ml