

Data Path : Z:\pestpcbsrv\HPCHEM1\ECD\_0\Data\PO111122\  
 Data File : PO090509.D  
 Signal(s) : Signal #1: ECD1A.ch Signal #2: ECD2B.ch  
 Acq On : 11 Nov 2022 20:40  
 Operator : YP/AJ  
 Sample : N5552-02 10X  
 Misc :  
 ALS Vial : 23 Sample Multiplier: 1

Instrument :  
 ECD\_0  
 ClientSampleId :  
 MOO-2022-41A

Integration File signal 1: autoint1.e  
 Integration File signal 2: autoint2.e  
 Quant Time: Nov 12 01:57:59 2022  
 Quant Method : Z:\pestpcbsrv\HPCHEM1\ECD\_0\methods\PO102722.M  
 Quant Title : GC EXTRACTABLES  
 QLast Update : Fri Oct 28 05:05:44 2022  
 Response via : Initial Calibration  
 Integrator: ChemStation

Volume Inj. : 2 µl  
 Signal #1 Phase : ZB-MR1 Signal #2 Phase: ZB-MR2  
 Signal #1 Info : 30Mx0.32mmx 0.50µ Signal #2 Info : 30M x 0.32mm x 0.25µm

Compound	RT#1	RT#2	Resp#1	Resp#2	ng/ml	ng/ml
-----						
System Monitoring Compounds						
1) SA Tetrachlo...	4.304	3.483	4294960	1676536	1.336	1.577
2) SA Decachlor...	10.061	8.494	4721187	1726289	1.927	1.676
Target Compounds						
26) L6 AR-1254-1	6.342	5.375	122.6E6	71015550	1057.723	1205.587
27) L6 AR-1254-2	6.563	5.524	186.9E6	63906071	1074.329	1192.716
28) L6 AR-1254-3	6.931	5.929	190.2E6	97409754	1095.546	1175.273
29) L6 AR-1254-4	7.219	6.159	130.5E6	54640128	1024.011	1100.185
30) L6 AR-1254-5	7.641	6.579	145.3E6	79021738	1031.628	1055.375
-----						

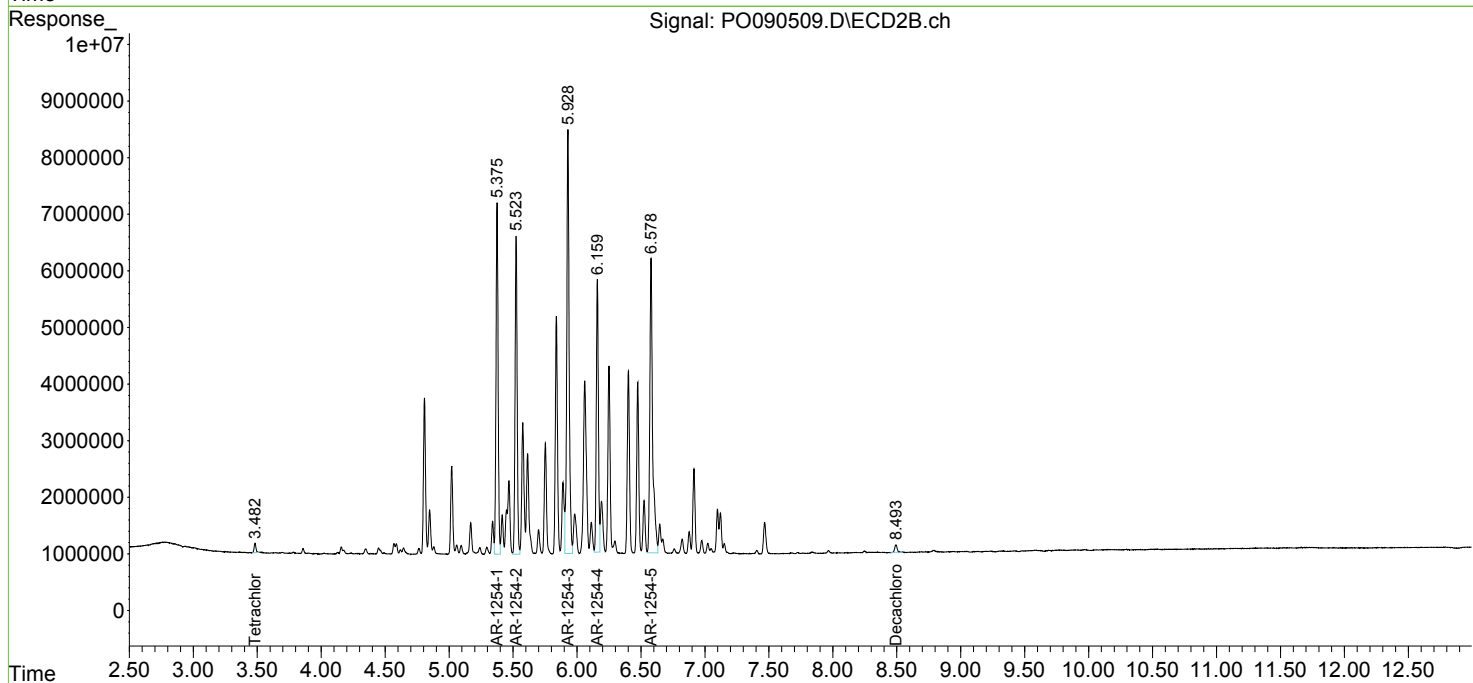
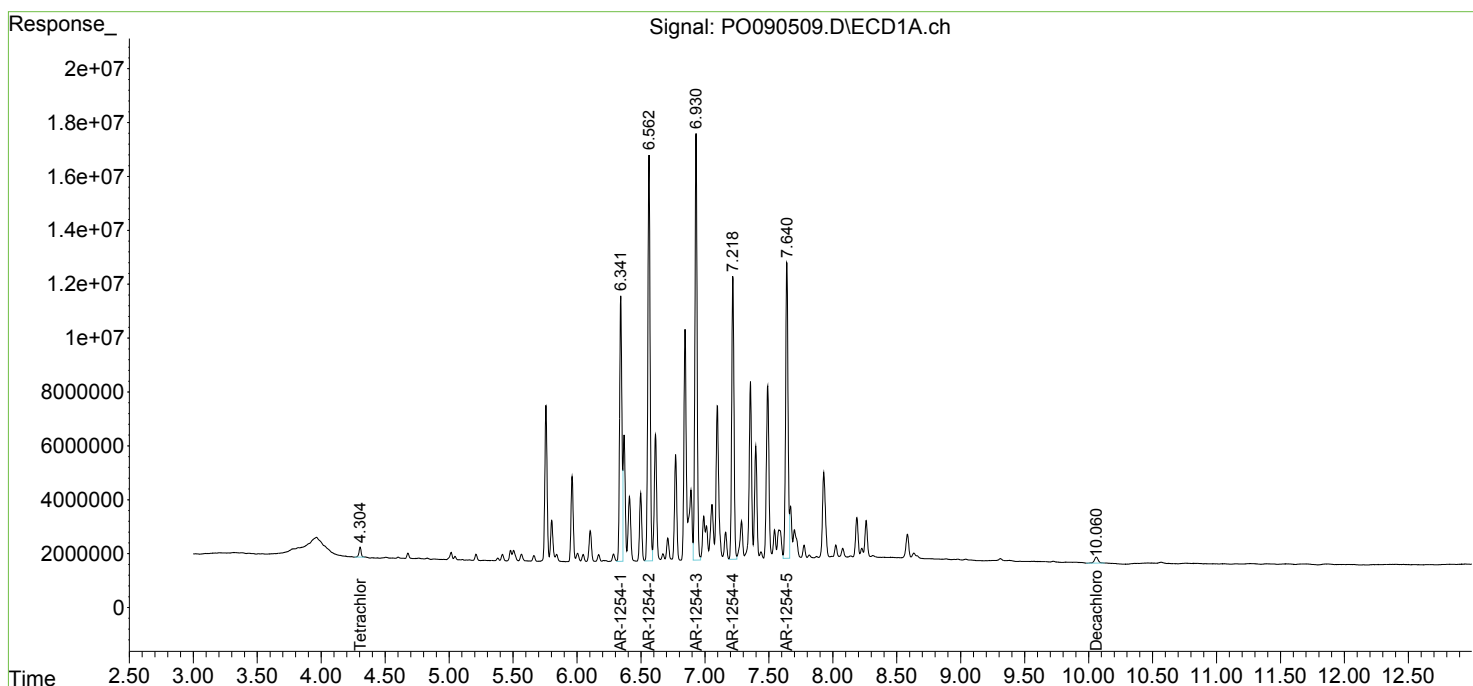
(f)=RT Delta > 1/2 Window (#)=Amounts differ by > 25% (m)=manual int.

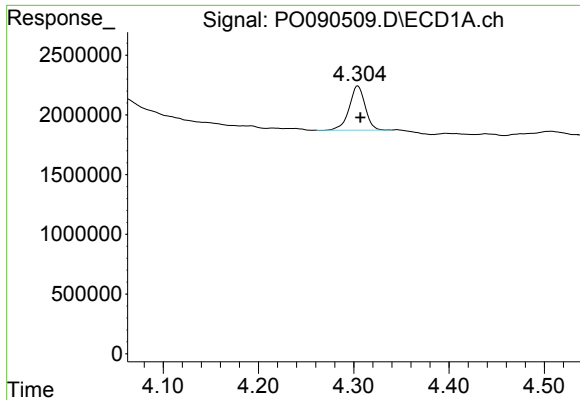
Data Path : Z:\pestpcbsrv\HPCHEM1\ECD\_0\Data\PO111122\  
 Data File : PO090509.D  
 Signal(s) : Signal #1: ECD1A.ch Signal #2: ECD2B.ch  
 Acq On : 11 Nov 2022 20:40  
 Operator : YP/AJ  
 Sample : N5552-02 10X  
 Misc :  
 ALS Vial : 23 Sample Multiplier: 1

Instrument :  
 ECD\_0  
 ClientSampleId :  
 MOO-2022-41A

Integration File signal 1: autoint1.e  
 Integration File signal 2: autoint2.e  
 Quant Time: Nov 12 01:57:59 2022  
 Quant Method : Z:\pestpcbsrv\HPCHEM1\ECD\_0\methods\PO102722.M  
 Quant Title : GC EXTRACTABLES  
 QLast Update : Fri Oct 28 05:05:44 2022  
 Response via : Initial Calibration  
 Integrator: ChemStation

Volume Inj. : 2 µl  
 Signal #1 Phase : ZB-MR1 Signal #2 Phase: ZB-MR2  
 Signal #1 Info : 30Mx0.32mmx 0.50µ Signal #2 Info : 30M x 0.32mm x 0.25µm

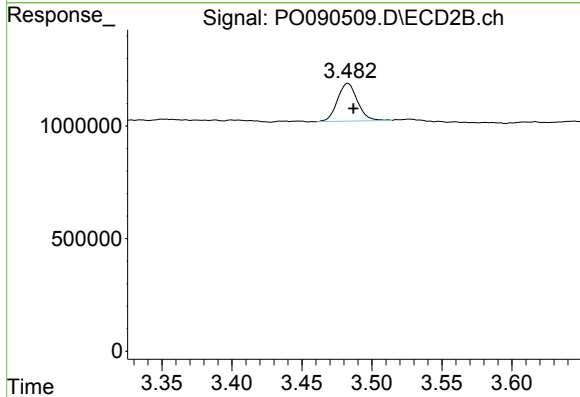




#1 Tetrachloro-m-xylene

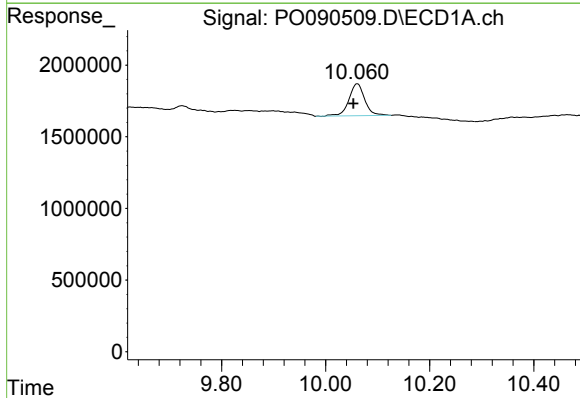
R.T.: 4.304 min  
 Delta R.T.: -0.003 min  
 Response: 4294960  
 Conc: 1.34 ng/ml

Instrument :  
 ECD\_O  
 ClientSampleId :  
 MOO-2022-41A



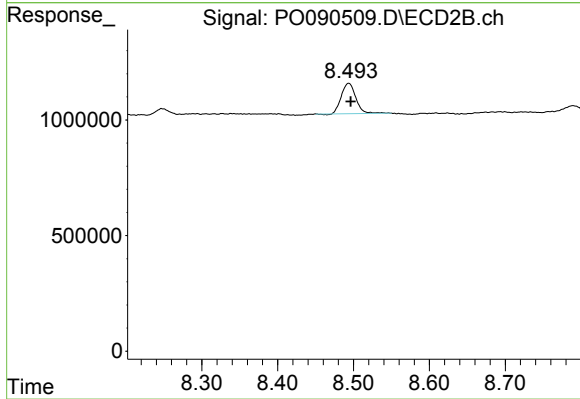
#1 Tetrachloro-m-xylene

R.T.: 3.483 min  
 Delta R.T.: -0.004 min  
 Response: 1676536  
 Conc: 1.58 ng/ml



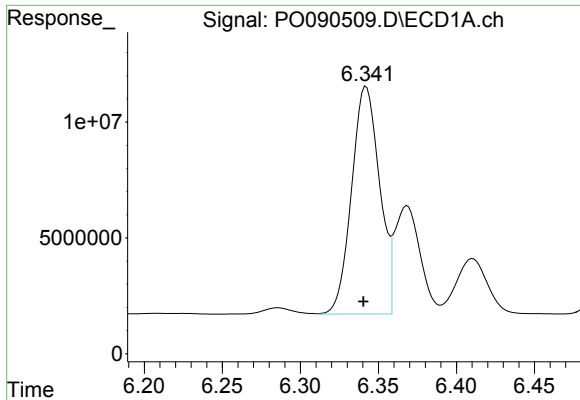
#2 Decachlorobiphenyl

R.T.: 10.061 min  
 Delta R.T.: 0.007 min  
 Response: 4721187  
 Conc: 1.93 ng/ml



#2 Decachlorobiphenyl

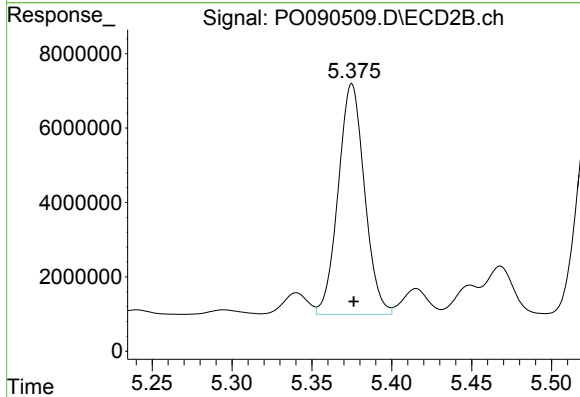
R.T.: 8.494 min  
 Delta R.T.: -0.003 min  
 Response: 1726289  
 Conc: 1.68 ng/ml



#26 AR-1254-1

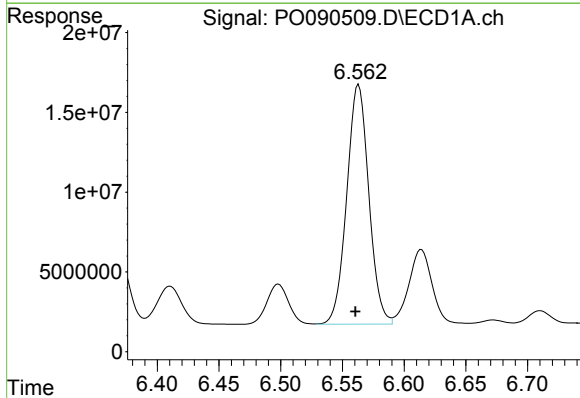
R.T.: 6.342 min  
 Delta R.T.: 0.002 min  
 Response: 122587152  
 Conc: 1057.72 ng/ml

Instrument :  
 ECD\_O  
 ClientSampleId :  
 MOO-2022-41A



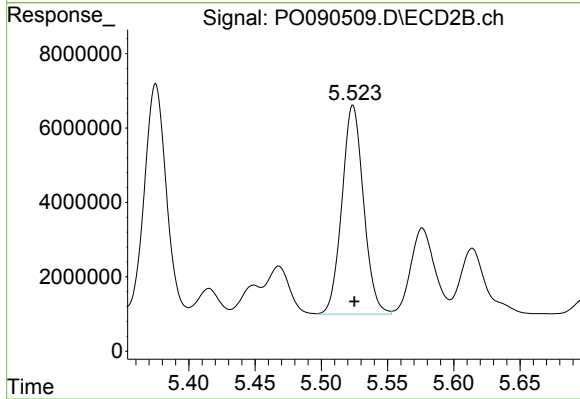
#26 AR-1254-1

R.T.: 5.375 min  
 Delta R.T.: -0.001 min  
 Response: 71015550  
 Conc: 1205.59 ng/ml



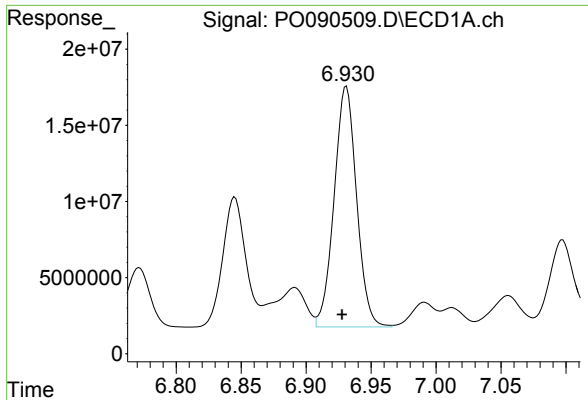
#27 AR-1254-2

R.T.: 6.563 min  
 Delta R.T.: 0.003 min  
 Response: 186861774  
 Conc: 1074.33 ng/ml



#27 AR-1254-2

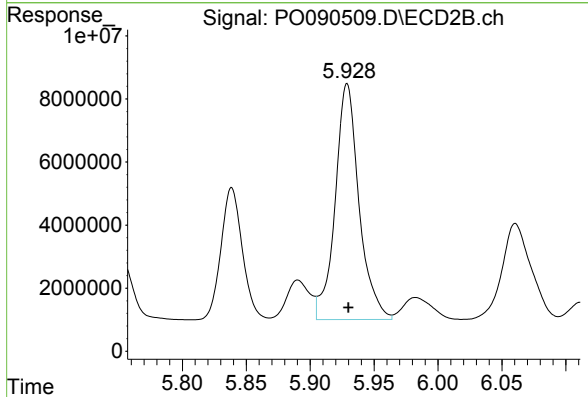
R.T.: 5.524 min  
 Delta R.T.: -0.001 min  
 Response: 63906071  
 Conc: 1192.72 ng/ml



#28 AR-1254-3

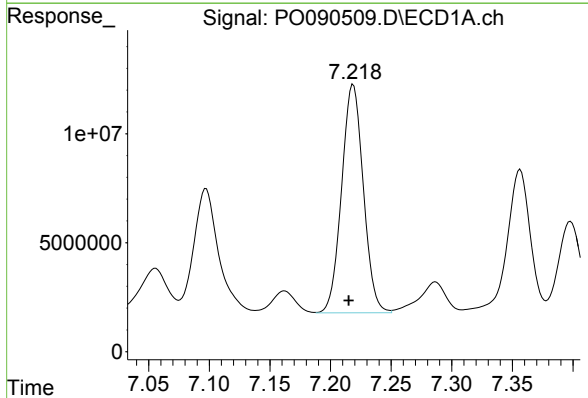
R.T.: 6.931 min  
 Delta R.T.: 0.003 min  
 Response: 190192490  
 Conc: 1095.55 ng/ml

Instrument :  
 ECD\_O  
 ClientSampleId :  
 MOO-2022-41A



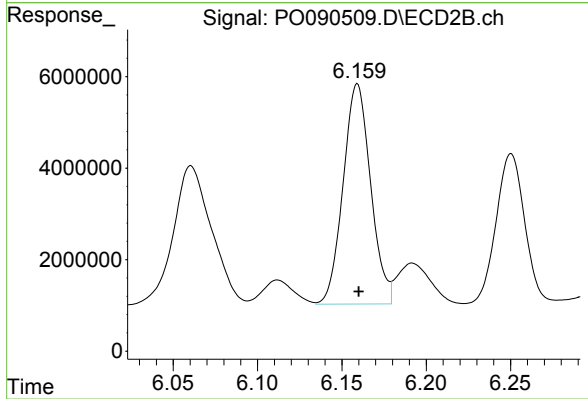
#28 AR-1254-3

R.T.: 5.929 min  
 Delta R.T.: -0.001 min  
 Response: 97409754  
 Conc: 1175.27 ng/ml



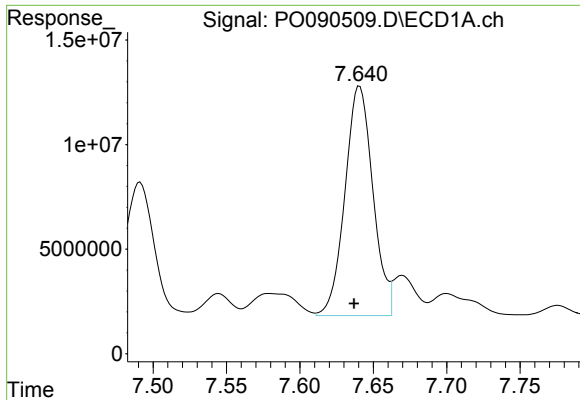
#29 AR-1254-4

R.T.: 7.219 min  
 Delta R.T.: 0.004 min  
 Response: 130527125  
 Conc: 1024.01 ng/ml



#29 AR-1254-4

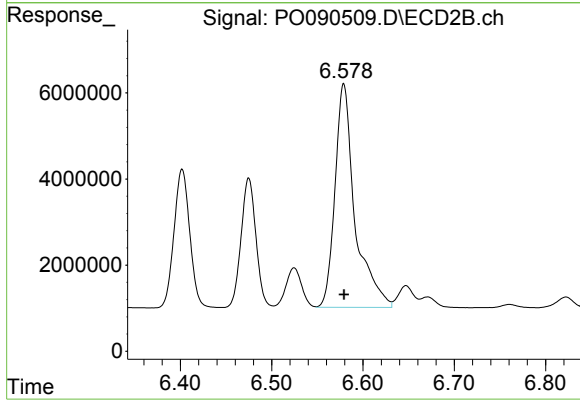
R.T.: 6.159 min  
 Delta R.T.: 0.000 min  
 Response: 54640128  
 Conc: 1100.19 ng/ml



#30 AR-1254-5

R.T.: 7.641 min  
Delta R.T.: 0.004 min  
Response: 145314658  
Conc: 1031.63 ng/ml

Instrument :  
ECD\_O  
ClientSampleId :  
MOO-2022-41A



#30 AR-1254-5

R.T.: 6.579 min  
Delta R.T.: 0.000 min  
Response: 79021738  
Conc: 1055.38 ng/ml