

Data Path : Z:\pestpcbsrv\HPCHEM1\ECD\_0\Data\PO111124\  
 Data File : PO107852.D  
 Signal(s) : Signal #1: ECD1A.ch Signal #2: ECD2B.ch  
 Acq On : 11 Nov 2024 19:57  
 Operator : YP/AJ  
 Sample : AR1242ICC500  
 Misc :  
 ALS Vial : 12 Sample Multiplier: 1

**Instrument :**  
 ECD\_0  
**ClientSampleId :**  
 AR1242ICC500

Integration File signal 1: autoint1.e  
 Integration File signal 2: autoint2.e  
 Quant Time: Nov 11 22:41:54 2024  
 Quant Method : Z:\pestpcbsrv\HPCHEM1\ECD\_0\methods\PO111124.M  
 Quant Title : GC EXTRACTABLES  
 QLast Update : Mon Nov 11 22:39:15 2024  
 Response via : Initial Calibration  
 Integrator: ChemStation

Volume Inj. : 2 µl  
 Signal #1 Phase : ZB-MR1 Signal #2 Phase: ZB-MR2  
 Signal #1 Info : 30Mx0.32mmx 0.50µ Signal #2 Info : 30M x 0.32mm x 0.25µm

Compound	RT#1	RT#2	Resp#1	Resp#2	ng/ml	ng/ml
-----						
System Monitoring Compounds						
1) SA Tetrachlo...	4.374	3.641	470.8E6	178.4E6	50.000	50.000
2) SA Decachlor...	10.093	8.639	154.5E6	167.9E6	50.000	50.000
Target Compounds						
16) L4 AR-1242-1	5.528	4.723	115.3E6	45156648	500.000	500.000
17) L4 AR-1242-2	5.551	4.741	166.6E6	63834740	500.000	500.000
18) L4 AR-1242-3	5.614	4.918	105.1E6	34256891	500.000	500.000
19) L4 AR-1242-4	5.711	5.001	84197511	32450054	500.000	500.000
20) L4 AR-1242-5	6.448	5.523	84852995	41059063	500.000	500.000
-----						

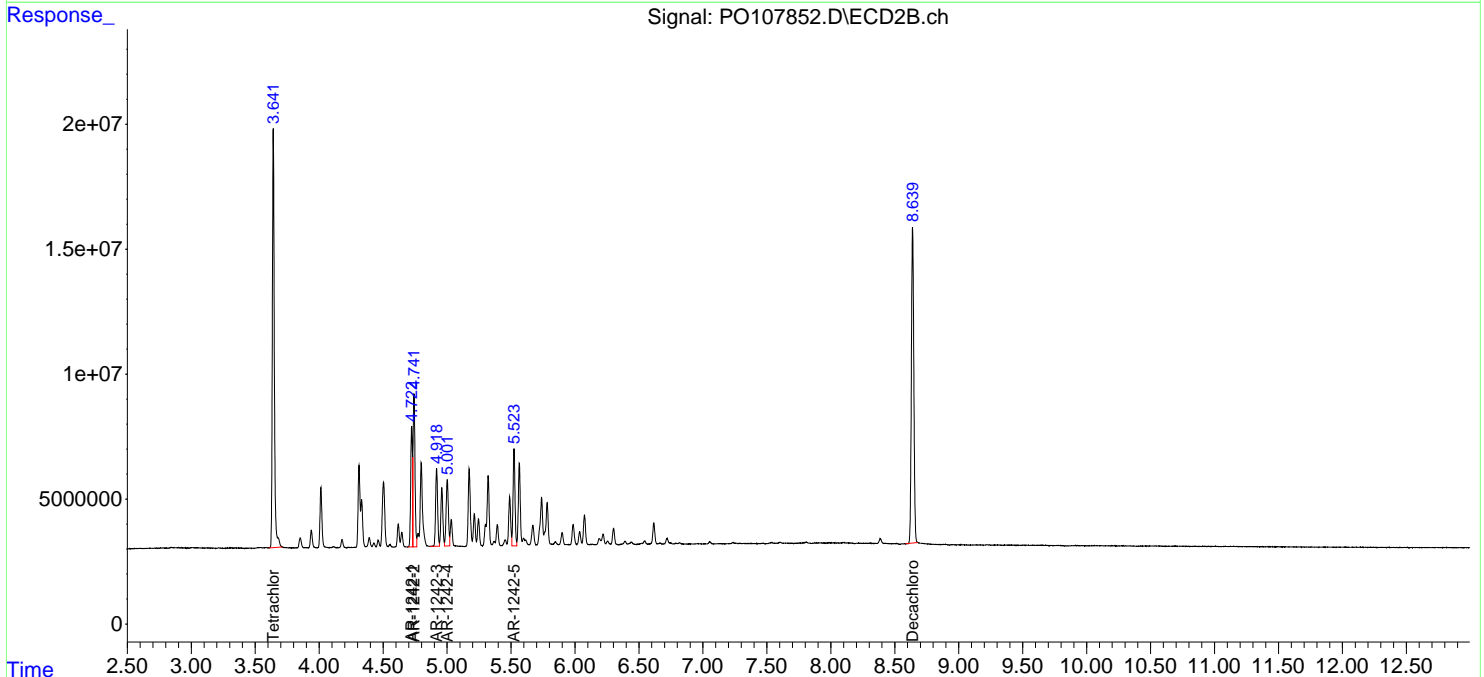
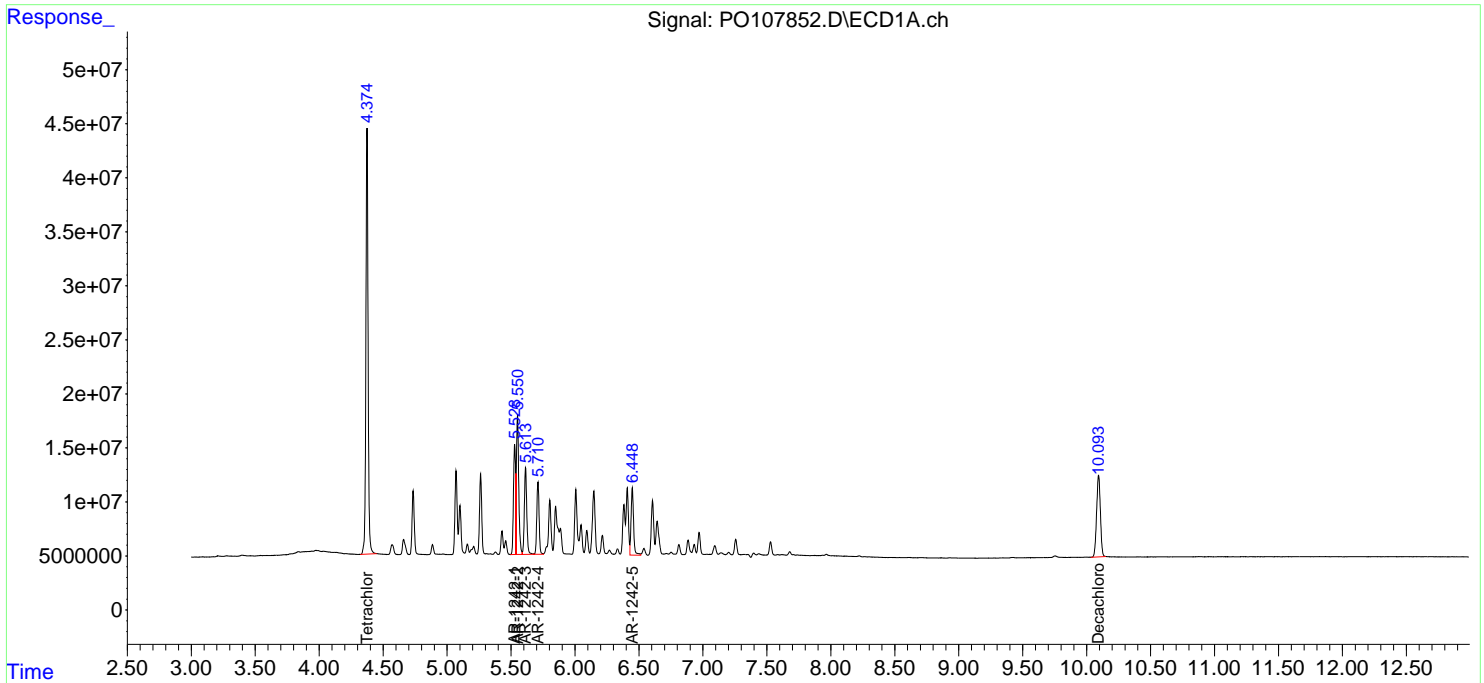
(f)=RT Delta > 1/2 Window (#)=Amounts differ by > 25% (m)=manual int.

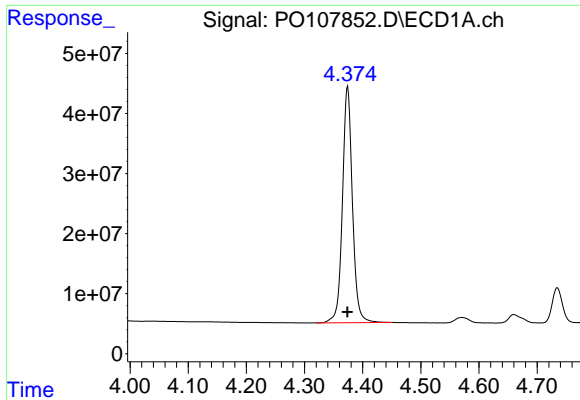
Data Path : Z:\pestpcbsrv\HPCHEM1\ECD\_O\Data\PO111124\  
 Data File : PO107852.D  
 Signal(s) : Signal #1: ECD1A.ch Signal #2: ECD2B.ch  
 Acq On : 11 Nov 2024 19:57  
 Operator : YP/AJ  
 Sample : AR1242ICC500  
 Misc :  
 ALS Vial : 12 Sample Multiplier: 1

Instrument :  
 ECD\_O  
 ClientSampleId :  
 AR1242ICC500

Integration File signal 1: autoint1.e  
 Integration File signal 2: autoint2.e  
 Quant Time: Nov 11 22:41:54 2024  
 Quant Method : Z:\pestpcbsrv\HPCHEM1\ECD\_O\methods\PO111124.M  
 Quant Title : GC EXTRACTABLES  
 QLast Update : Mon Nov 11 22:39:15 2024  
 Response via : Initial Calibration  
 Integrator: ChemStation

Volume Inj. : 2 µl  
 Signal #1 Phase : ZB-MR1 Signal #2 Phase: ZB-MR2  
 Signal #1 Info : 30Mx0.32mmx 0.50µ Signal #2 Info : 30M x 0.32mm x 0.25µm

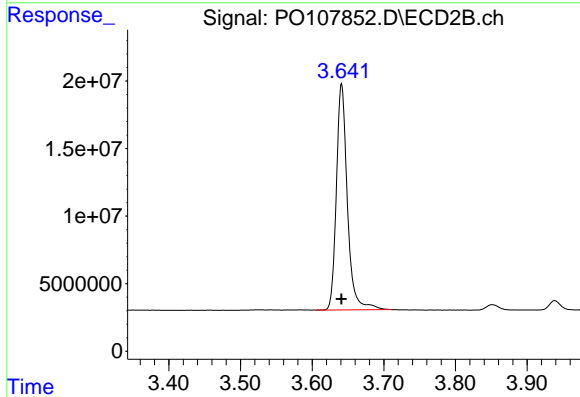




#1 Tetrachloro-m-xylene

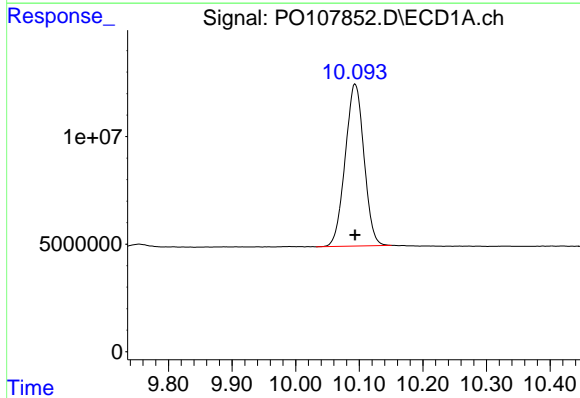
R.T.: 4.374 min  
 Delta R.T.: 0.000 min  
 Response: 470753750  
 Conc: 50.00 ng/ml

Instrument :  
 ECD\_O  
 ClientSampleId :  
 AR1242ICC500



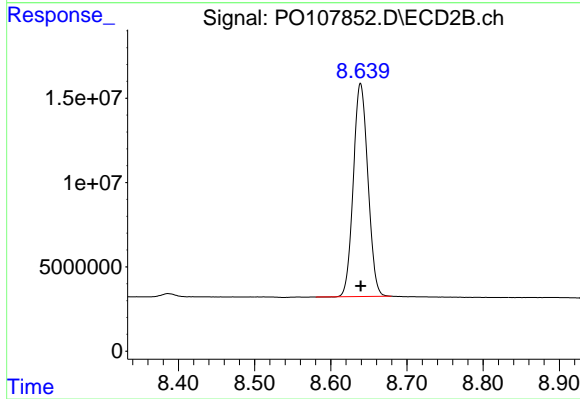
#1 Tetrachloro-m-xylene

R.T.: 3.641 min  
 Delta R.T.: 0.000 min  
 Response: 178364929  
 Conc: 50.00 ng/ml



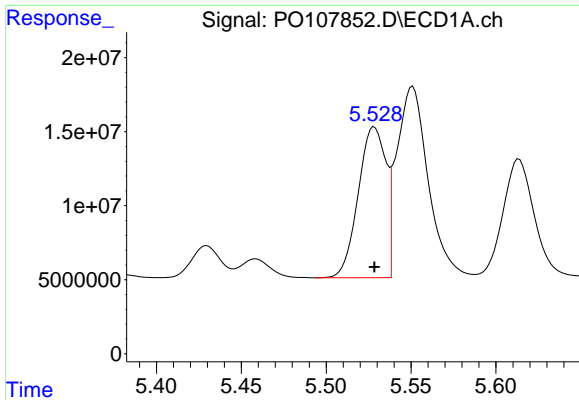
#2 Decachlorobiphenyl

R.T.: 10.093 min  
 Delta R.T.: 0.000 min  
 Response: 154511552  
 Conc: 50.00 ng/ml



#2 Decachlorobiphenyl

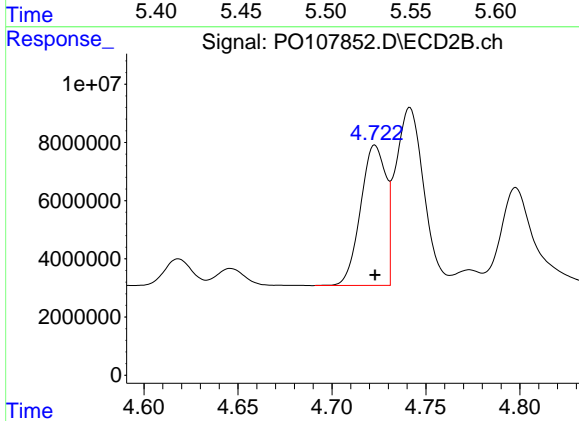
R.T.: 8.639 min  
 Delta R.T.: 0.000 min  
 Response: 167946248  
 Conc: 50.00 ng/ml



#16 AR-1242-1

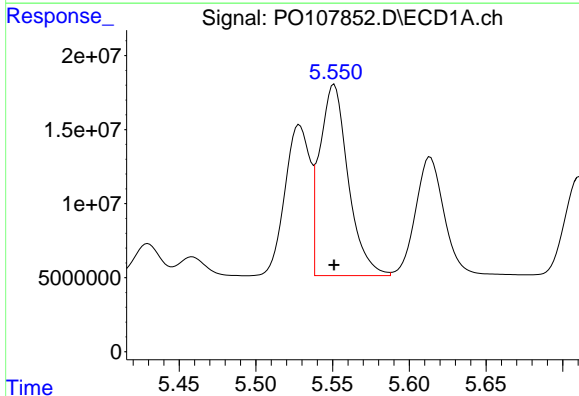
R.T.: 5.528 min  
 Delta R.T.: 0.000 min  
 Response: 115330720  
 Conc: 500.00 ng/ml

Instrument :  
 ECD\_O  
 ClientSampleId :  
 AR1242ICC500



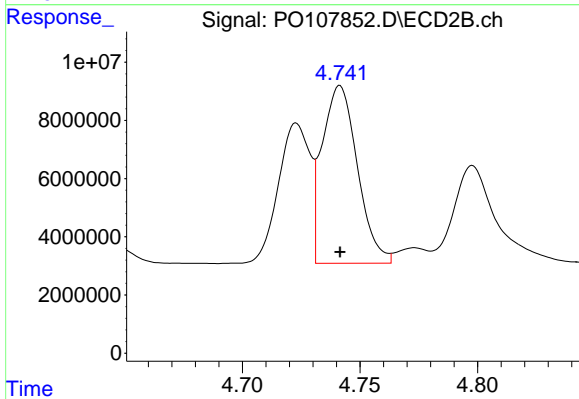
#16 AR-1242-1

R.T.: 4.723 min  
 Delta R.T.: 0.000 min  
 Response: 45156648  
 Conc: 500.00 ng/ml



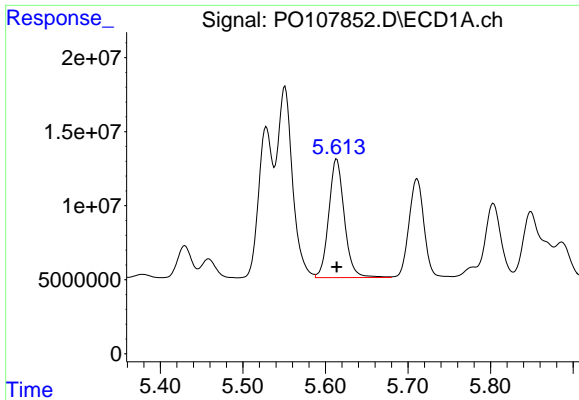
#17 AR-1242-2

R.T.: 5.551 min  
 Delta R.T.: 0.000 min  
 Response: 166554001  
 Conc: 500.00 ng/ml



#17 AR-1242-2

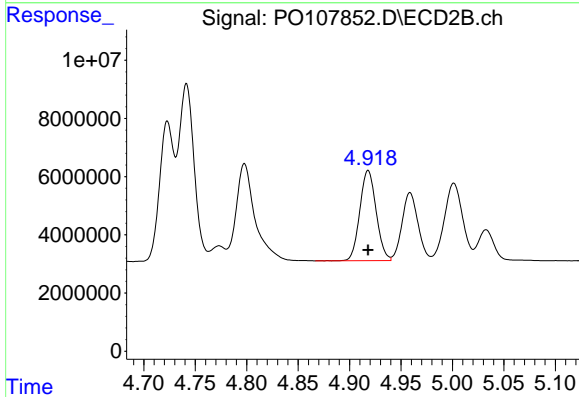
R.T.: 4.741 min  
 Delta R.T.: 0.000 min  
 Response: 63834740  
 Conc: 500.00 ng/ml



#18 AR-1242-3

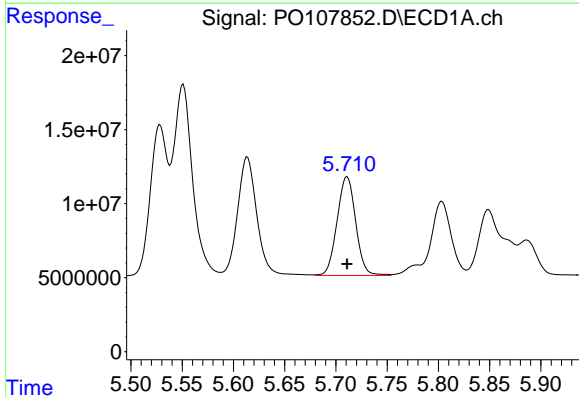
R.T.: 5.614 min  
 Delta R.T.: 0.000 min  
 Response: 105085026  
 Conc: 500.00 ng/ml

Instrument :  
 ECD\_O  
 ClientSampleId :  
 AR1242ICC500



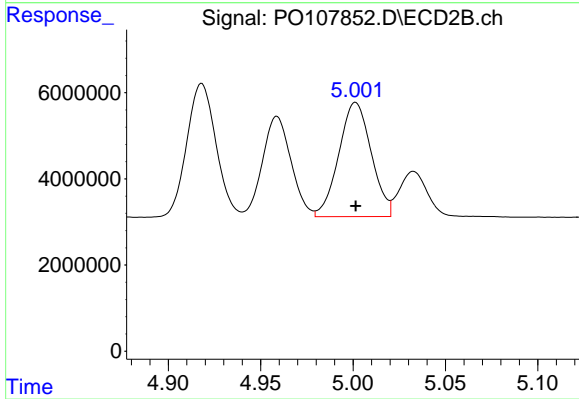
#18 AR-1242-3

R.T.: 4.918 min  
 Delta R.T.: 0.000 min  
 Response: 34256891  
 Conc: 500.00 ng/ml



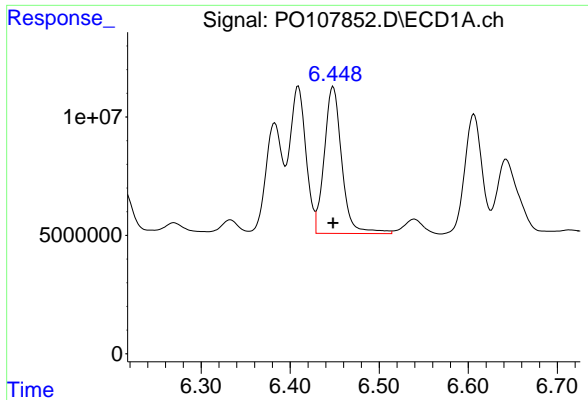
#19 AR-1242-4

R.T.: 5.711 min  
 Delta R.T.: 0.000 min  
 Response: 84197511  
 Conc: 500.00 ng/ml



#19 AR-1242-4

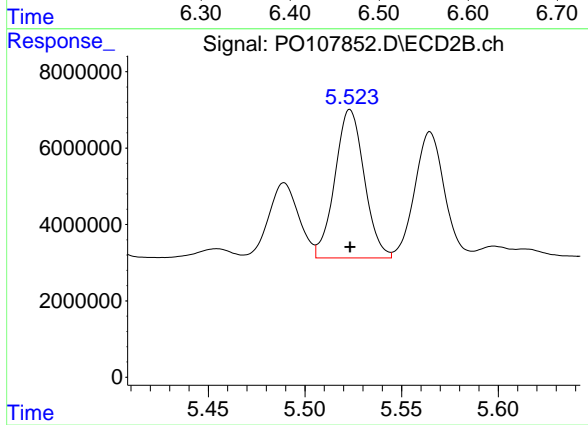
R.T.: 5.001 min  
 Delta R.T.: 0.000 min  
 Response: 32450054  
 Conc: 500.00 ng/ml



#20 AR-1242-5

R.T.: 6.448 min  
 Delta R.T.: 0.000 min  
 Response: 84852995  
 Conc: 500.00 ng/ml

Instrument :  
 ECD\_O  
 ClientSampleId :  
 AR1242ICC500



#20 AR-1242-5

R.T.: 5.523 min  
 Delta R.T.: 0.000 min  
 Response: 41059063  
 Conc: 500.00 ng/ml