

Data Path : Z:\pestpcbsrv\HPCHEM1\ECD\_0\Data\P0111219\  
 Data File : P0063665.D  
 Signal(s) : Signal #1: ECD1A.CH Signal #2: ECD2B.CH  
 Acq On : 12 Nov 2019 16:44  
 Operator : SM/AJ  
 Sample : K5789-07  
 Misc :  
 ALS Vial : 20 Sample Multiplier: 1

Instrument :  
 ECD\_0  
 ClientSampleId :  
 TP-16B-S

Integration File signal 1: autoint1.e  
 Integration File signal 2: autoint2.e  
 Quant Time: Nov 12 17:21:31 2019  
 Quant Method : Z:\pestpcbsrv\HPCHEM1\ECD\_0\methods\P0110719.M  
 Quant Title : GC EXTRACTABLES  
 QLast Update : Fri Nov 08 04:54:26 2019  
 Response via : Initial Calibration  
 Integrator: ChemStation 6890 Scale Mode: Small noise peaks clipped

Volume Inj. : 2 µl  
 Signal #1 Phase : ZB-MR1 Signal #2 Phase: ZB-MR2  
 Signal #1 Info : 30Mx0.32mmx 0.50µ Signal #2 Info : 30M x 0.32mm x 0.25µm

Compound	RT#1	RT#2	Resp#1	Resp#2	ng/ml	ng/ml
----------	------	------	--------	--------	-------	-------

-----  
 System Monitoring Compounds

1) SA Tetrachlo...	4.319	3.573	803811	610711	24.291	28.964
2) SA Decachlor...	9.944	8.547	925577	618106	16.868	20.853

Target Compounds  
 -----

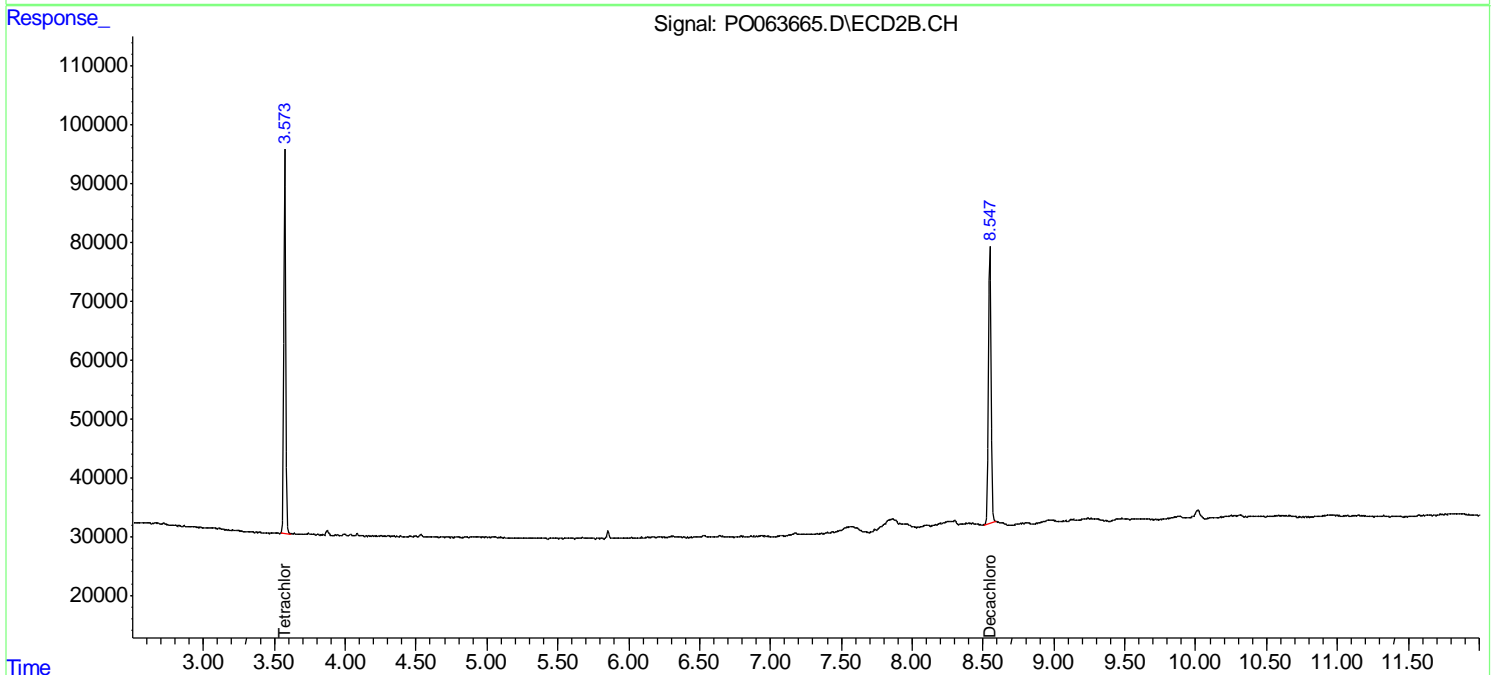
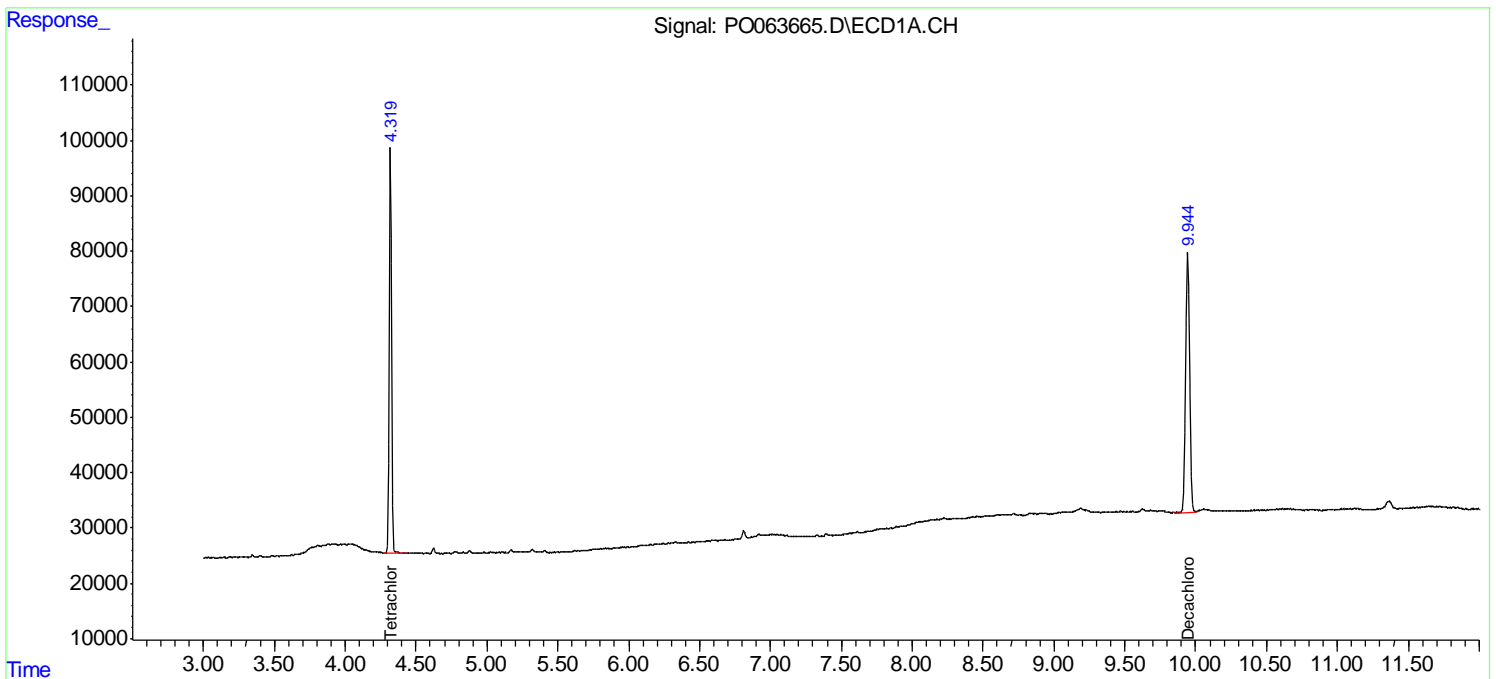
(f)=RT Delta > 1/2 Window (#)=Amounts differ by > 25% (m)=manual int.

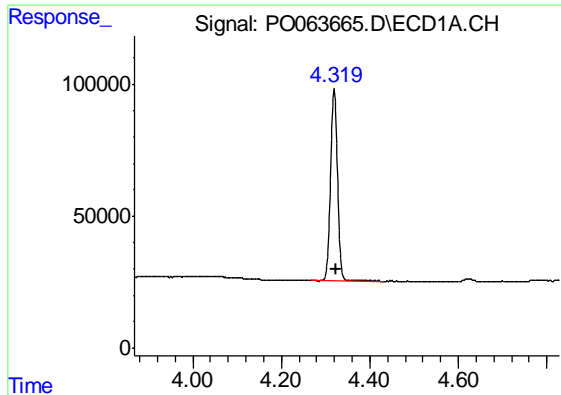
Data Path : Z:\pestpcbsrv\HPCHEM1\ECD\_O\Data\PO111219\  
 Data File : PO063665.D  
 Signal(s) : Signal #1: ECD1A.CH Signal #2: ECD2B.CH  
 Acq On : 12 Nov 2019 16:44  
 Operator : SM/AJ  
 Sample : K5789-07  
 Misc :  
 ALS Vial : 20 Sample Multiplier: 1

Instrument :  
 ECD\_O  
 ClientSampleId :  
 TP-16B-S

Integration File signal 1: autoint1.e  
 Integration File signal 2: autoint2.e  
 Quant Time: Nov 12 17:21:31 2019  
 Quant Method : Z:\pestpcbsrv\HPCHEM1\ECD\_O\methods\PO110719.M  
 Quant Title : GC EXTRACTABLES  
 QLast Update : Fri Nov 08 04:54:26 2019  
 Response via : Initial Calibration  
 Integrator: ChemStation 6890 Scale Mode: Small noise peaks clipped

Volume Inj. : 2 µl  
 Signal #1 Phase : ZB-MR1 Signal #2 Phase: ZB-MR2  
 Signal #1 Info : 30Mx0.32mmx 0.50µ Signal #2 Info : 30M x 0.32mm x 0.25µm

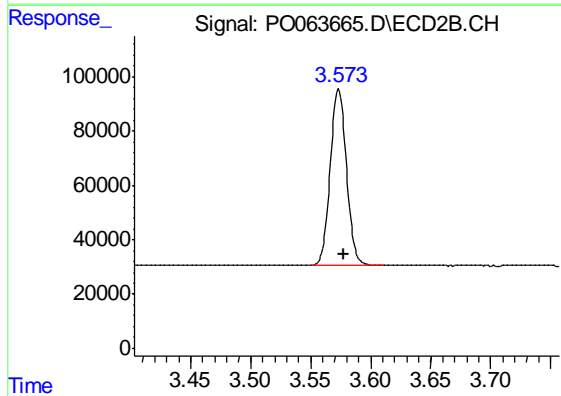




#1 Tetrachloro-m-xylene

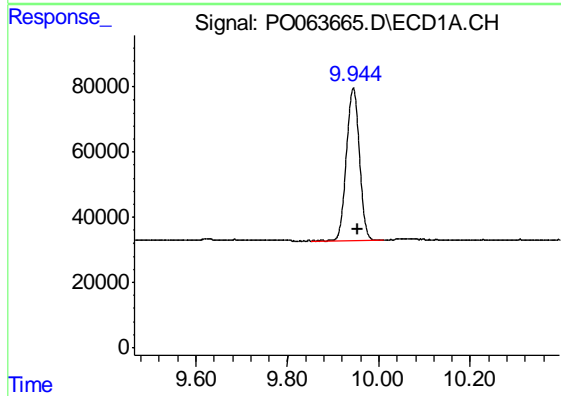
R.T.: 4.319 min  
Delta R.T.: -0.005 min  
Response: 803811  
Conc: 24.29 ng/ml

Instrument :  
ECD\_O  
ClientSampleId :  
TP-16B-S



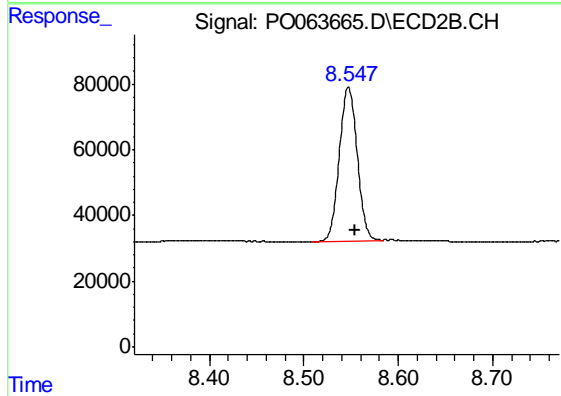
#1 Tetrachloro-m-xylene

R.T.: 3.573 min  
Delta R.T.: -0.004 min  
Response: 610711  
Conc: 28.96 ng/ml



#2 Decachlorobiphenyl

R.T.: 9.944 min  
Delta R.T.: -0.009 min  
Response: 925577  
Conc: 16.87 ng/ml



#2 Decachlorobiphenyl

R.T.: 8.547 min  
Delta R.T.: -0.007 min  
Response: 618106  
Conc: 20.85 ng/ml