

Data Path : Z:\pestpcbsrv\HPCHEM1\ECD\_0\Data\PO111220\  
 Data File : P0073249.D  
 Signal(s) : Signal #1: ECD1A.CH Signal #2: ECD2B.CH  
 Acq On : 12 Nov 2020 20:57  
 Operator : DD\AJ  
 Sample : AR1660CCC500  
 Misc :  
 ALS Vial : 3 Sample Multiplier: 1

Instrument :  
 ECD\_O  
 ClientSampleId :  
 AR1660CCC500

Integration File signal 1: autoint1.e  
 Integration File signal 2: autoint2.e  
 Quant Time: Nov 13 00:56:12 2020  
 Quant Method : Z:\pestpcbsrv\HPCHEM1\ECD\_0\methods\PO110420.M  
 Quant Title : GC EXTRACTABLES  
 QLast Update : Tue Nov 10 11:30:16 2020  
 Response via : Initial Calibration  
 Integrator: ChemStation 6890 Scale Mode: Small noise peaks clipped

Volume Inj. : 2 µl  
 Signal #1 Phase : ZB-MR1 Signal #2 Phase: ZB-MR2  
 Signal #1 Info : 30Mx0.32mmx 0.50µ Signal #2 Info : 30M x 0.32mm x 0.25µm

Compound	RT#1	RT#2	Resp#1	Resp#2	ng/ml	ng/ml
-----						
System Monitoring Compounds						
1) SA Tetrachlo...	4.946	4.018	3445543	2008301	65.011	56.201
2) SA Decachlor...	10.974	9.292	2171078	1496274	52.463	44.849
Target Compounds						
3) L1 AR-1016-1	6.269	5.268	1236886	786924	623.573	534.346
4) L1 AR-1016-2	6.293	5.289	1690279	1062584	616.560	534.092
5) L1 AR-1016-3	6.359	5.478	1013152	560565	607.916	589.027
6) L1 AR-1016-4	6.467	5.530	821325	465197	609.314	552.353
7) L1 AR-1016-5	6.783	5.758	738336	568603	650.852	527.636
8) L2 AR-1221-1	5.192	4.272	109083	72896	158.372	153.802
9) L2 AR-1221-2	5.296	4.371	157694	102755	309.954	286.943
10) L2 AR-1221-3	5.383	4.460	609867	400967	389.872	365.418
11) L3 AR-1232-1	5.383	4.460	609867	400967	487.068	465.819
12) L3 AR-1232-2	5.974	5.289	790651	1062584	1277.809	1203.025
13) L3 AR-1232-3	6.293	5.478	1690279	560565	1343.618	1313.629
14) L3 AR-1232-4	6.467	5.575	821325	549400	1346.274	1304.802
15) L3 AR-1232-5	6.564	5.758	639264	568603	1527.369	1270.160
16) L4 AR-1242-1	6.269	5.268	1236886	786924	711.440	629.256
17) L4 AR-1242-2	6.293	5.289	1690279	1062584	705.700	637.803
18) L4 AR-1242-3	6.359	5.478	1013152	560565	691.939	672.483
19) L4 AR-1242-4	6.467	5.575	821325	549400	681.610	626.798
20) L4 AR-1242-5	7.252	6.136	121606	421941	92.909	371.116 #
21) L5 AR-1248-1	6.269	5.268	1236886	786924	918.693	839.359
22) L5 AR-1248-2	6.564	5.530	639264	465197	368.494	359.170
23) L5 AR-1248-3	6.783	5.575	738336	549400	393.812	406.626
24) L5 AR-1248-4	7.212	5.758	157518	568603	65.152	358.534 #
25) L5 AR-1248-5	7.252	6.178	121606	70747	52.976	44.431
26) L6 AR-1254-1	7.182	6.136	557029	421941	238.073	175.617 #
27) L6 AR-1254-2	7.412	6.294	570587	385261	161.934	180.009
28) L6 AR-1254-3	7.795	6.731	319098	752990	88.730	223.826 #
29) L6 AR-1254-4	8.091	6.950	250819	112687	83.348	50.740 #
30) L6 AR-1254-5	8.519	7.377	1791405	1271838	618.845	418.978 #
31) L7 AR-1260-1	7.963	6.849	1298618	990442	596.179	492.989
32) L7 AR-1260-2	8.229	7.045	1694988	1170397	625.653	471.605
33) L7 AR-1260-3	8.594	7.199	1329453	1061397	645.870	470.245 #
34) L7 AR-1260-4	8.826	7.680	1279781	882034	560.646	476.692
35) L7 AR-1260-5	9.154	7.925	2750324	1993596	623.535	465.562 #
36) L8 AR-1262-1	8.594	7.377	1329453	1271838	390.119	816.694 #
37) L8 AR-1262-2	9.154	7.925	2750324	1993596	473.767	394.043
38) L8 AR-1262-3	9.466	8.211	570921	468992	137.258	231.027 #
39) L8 AR-1262-4	9.541f	8.273	1065817	1444552	331.436	393.424
40) L8 AR-1262-5	10.226	8.768	778332	519469	370.057	296.994
41) L9 AR-1268-1	9.466	8.211	570921	468992	85.043	92.486
42) L9 AR-1268-2	9.541f	8.273	1065817	1444552	160.976	324.330 #

Data Path : Z:\pestpcbsrv\HPCHEM1\ECD\_0\Data\P0111220\  
 Data File : P0073249.D  
 Signal(s) : Signal #1: ECD1A.CH Signal #2: ECD2B.CH  
 Acq On : 12 Nov 2020 20:57  
 Operator : DD\AJ  
 Sample : AR1660CCC500  
 Misc :  
 ALS Vial : 3 Sample Multiplier: 1

Instrument :  
 ECD\_0  
 ClientSampleId :  
 AR1660CCC500

Integration File signal 1: autoint1.e  
 Integration File signal 2: autoint2.e  
 Quant Time: Nov 13 00:56:12 2020  
 Quant Method : Z:\pestpcbsrv\HPCHEM1\ECD\_0\methods\P0110420.M  
 Quant Title : GC EXTRACTABLES  
 QLast Update : Tue Nov 10 11:30:16 2020  
 Response via : Initial Calibration  
 Integrator: ChemStation 6890 Scale Mode: Small noise peaks clipped

Volume Inj. : 2 µl  
 Signal #1 Phase : ZB-MR1 Signal #2 Phase: ZB-MR2  
 Signal #1 Info : 30Mx0.32mmx 0.50µ Signal #2 Info : 30M x 0.32mm x 0.25µm

	Compound	RT#1	RT#2	Resp#1	Resp#2	ng/ml	ng/ml	
43)	L9 AR-1268-3	9.785	0.000	41299	0	7.125	N.D.	#
44)	L9 AR-1268-4	10.226	8.768	778332	519469	364.216	311.536	
45)	L9 AR-1268-5	10.639	9.048	221977	140209	12.897	11.578	

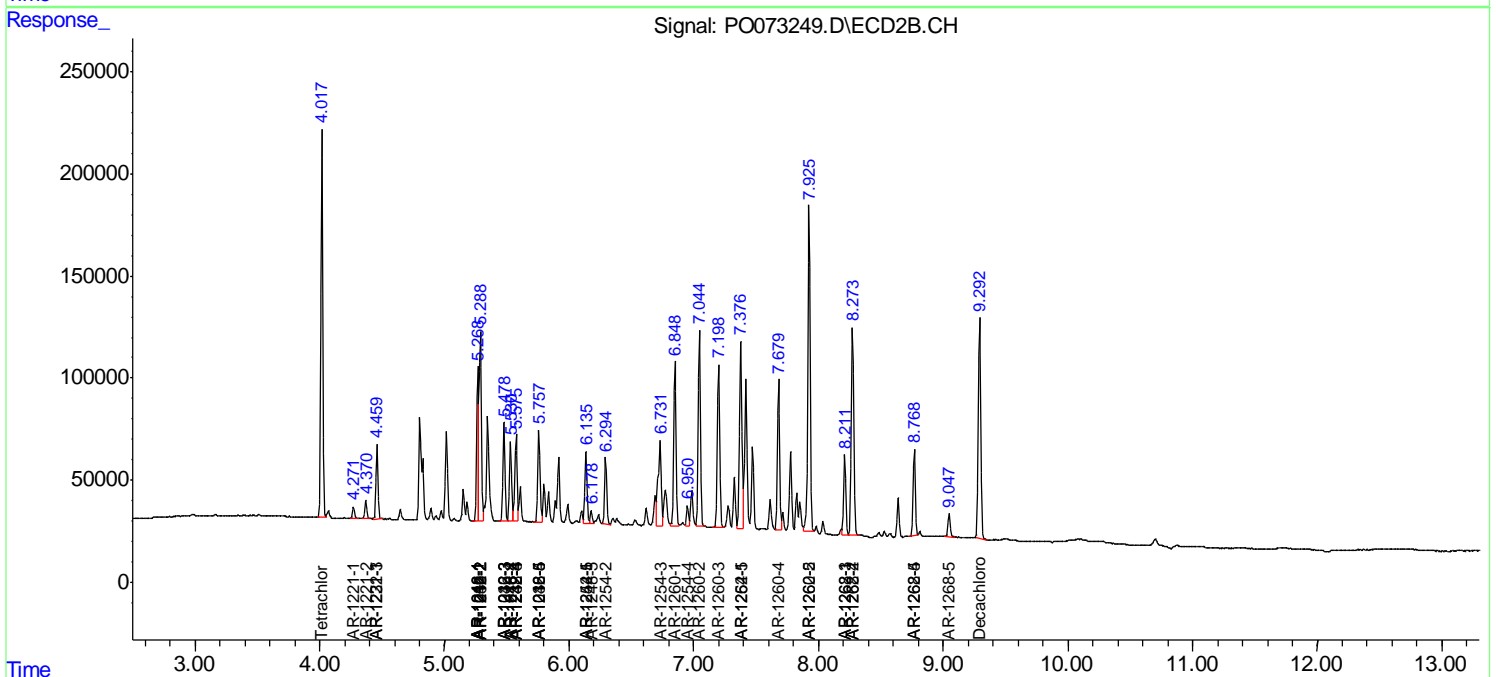
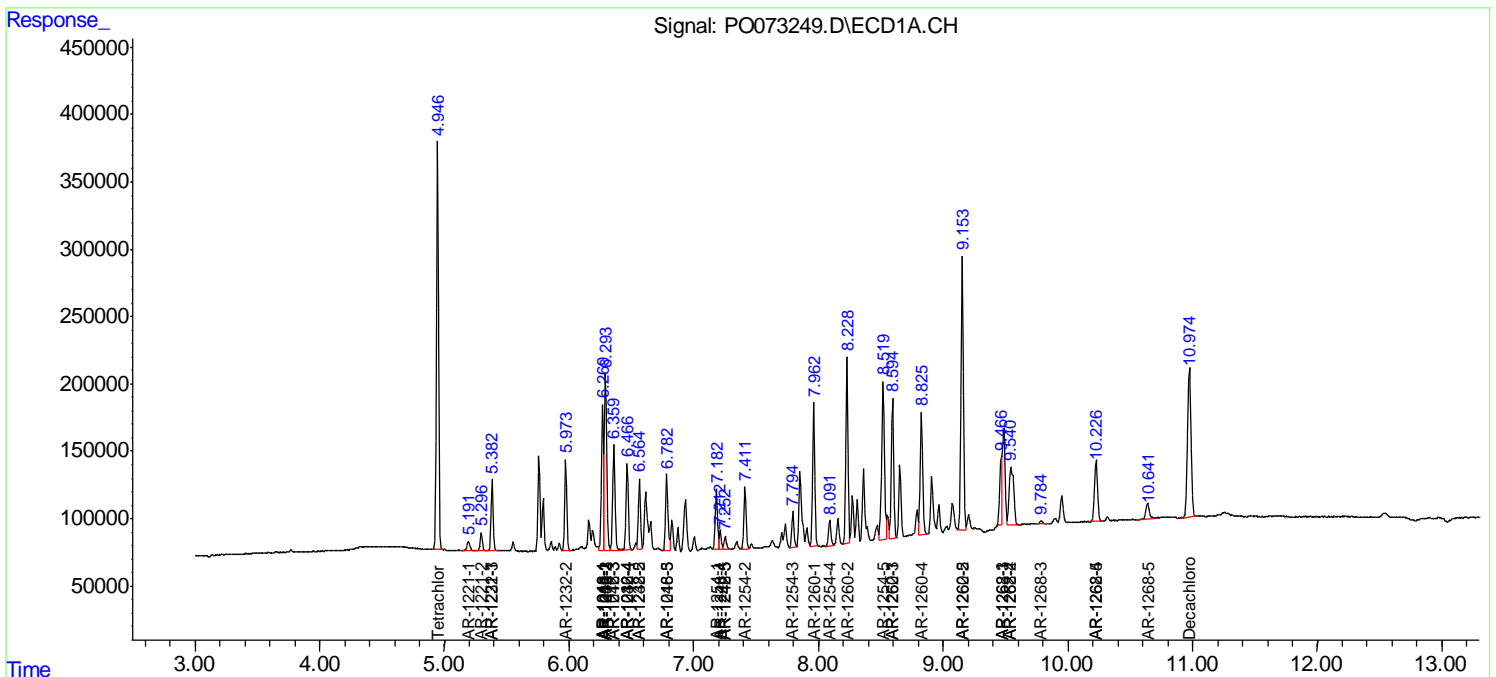
(f)=RT Delta > 1/2 Window (#)=Amounts differ by > 25% (m)=manual int.

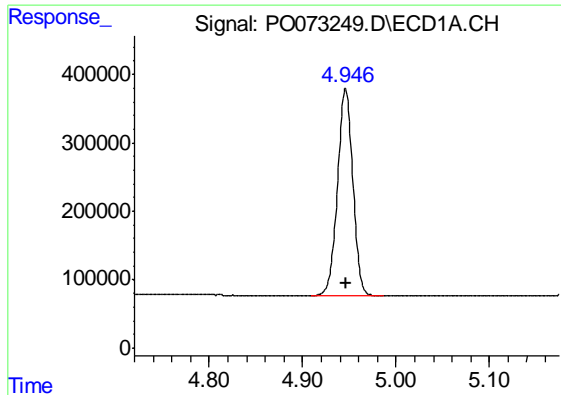
Data Path : Z:\pestpcbsrv\HPCHEM1\ECD\_O\Data\PO111220\  
 Data File : PO073249.D  
 Signal(s) : Signal #1: ECD1A.CH Signal #2: ECD2B.CH  
 Acq On : 12 Nov 2020 20:57  
 Operator : DD\AJ  
 Sample : AR1660CCC500  
 Misc :  
 ALS Vial : 3 Sample Multiplier: 1

Instrument :  
 ECD\_O  
 Client Sampled :  
 AR1660CCC500

Integration File signal 1: autoint1.e  
 Integration File signal 2: autoint2.e  
 Quant Time: Nov 13 00:56:12 2020  
 Quant Method : Z:\pestpcbsrv\HPCHEM1\ECD\_O\methods\PO110420.M  
 Quant Title : GC EXTRACTABLES  
 QLast Update : Tue Nov 10 11:30:16 2020  
 Response via : Initial Calibration  
 Integrator: ChemStation 6890 Scale Mode: Small noise peaks clipped

Volume Inj. : 2 µl  
 Signal #1 Phase : ZB-MR1 Signal #2 Phase: ZB-MR2  
 Signal #1 Info : 30Mx0.32mmx 0.50µ Signal #2 Info : 30M x 0.32mm x 0.25µm

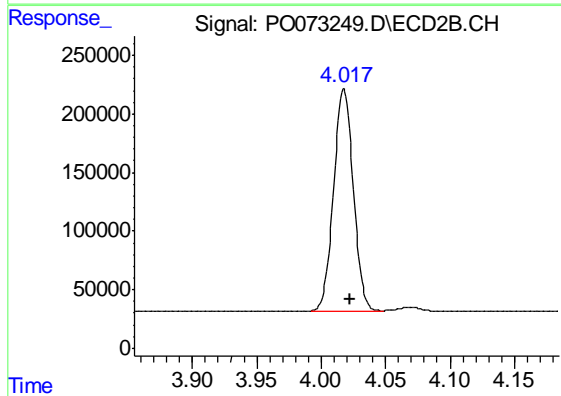




#1 Tetrachloro-m-xylene

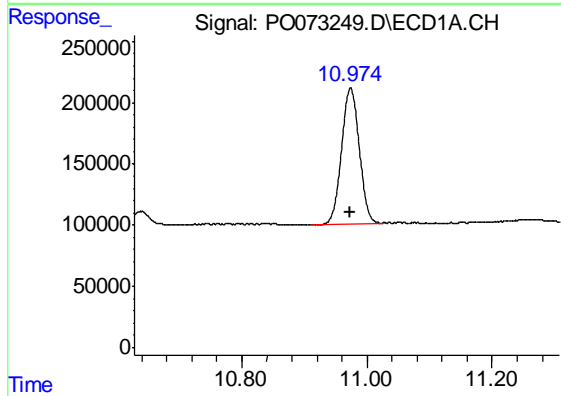
R.T.: 4.946 min  
 Delta R.T.: 0.000 min  
 Response: 3445543  
 Conc: 65.01 ng/ml

Instrument :  
 ECD\_O  
 ClientSampleId :  
 AR1660CCC500



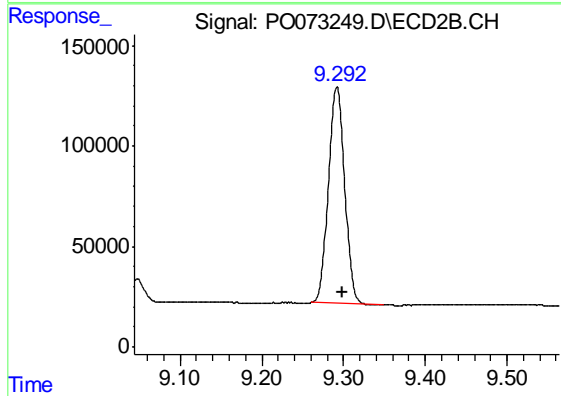
#1 Tetrachloro-m-xylene

R.T.: 4.018 min  
 Delta R.T.: -0.005 min  
 Response: 2008301  
 Conc: 56.20 ng/ml



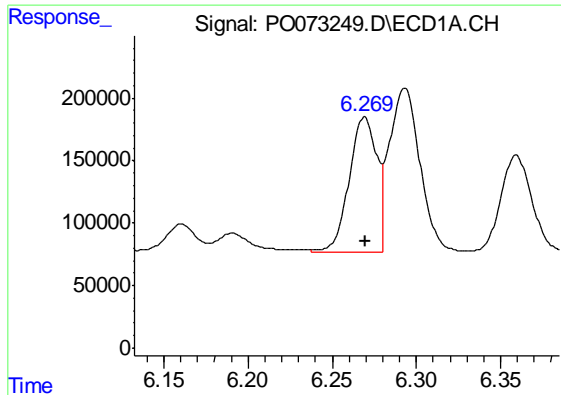
#2 Decachlorobiphenyl

R.T.: 10.974 min  
 Delta R.T.: 0.001 min  
 Response: 2171078  
 Conc: 52.46 ng/ml



#2 Decachlorobiphenyl

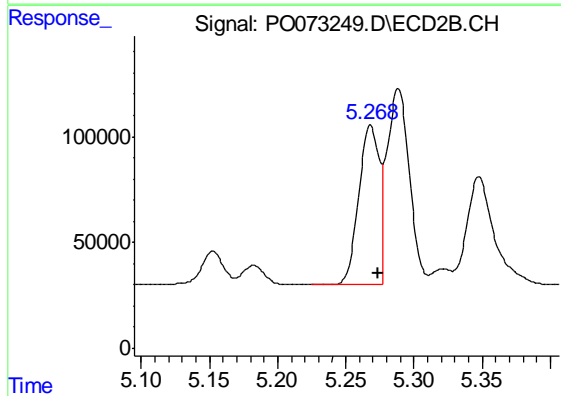
R.T.: 9.292 min  
 Delta R.T.: -0.007 min  
 Response: 1496274  
 Conc: 44.85 ng/ml



#3 AR-1016-1

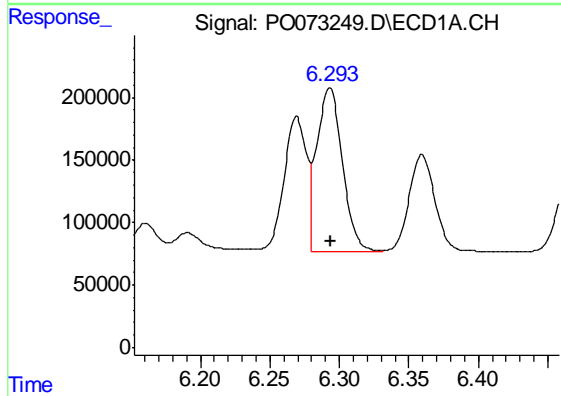
R.T.: 6.269 min  
 Delta R.T.: 0.000 min  
 Response: 1236886  
 Conc: 623.57 ng/ml

Instrument :  
 ECD\_O  
 ClientSampleId :  
 AR1660CCC500



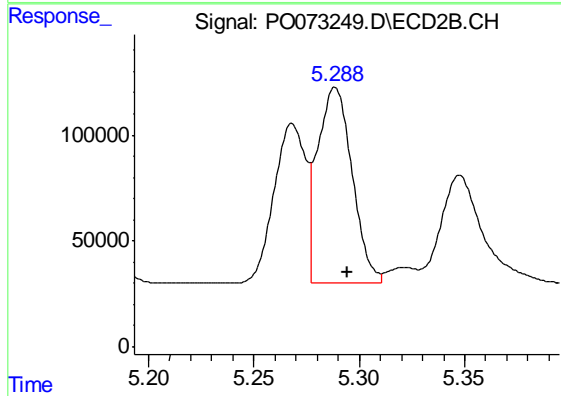
#3 AR-1016-1

R.T.: 5.268 min  
 Delta R.T.: -0.006 min  
 Response: 786924  
 Conc: 534.35 ng/ml



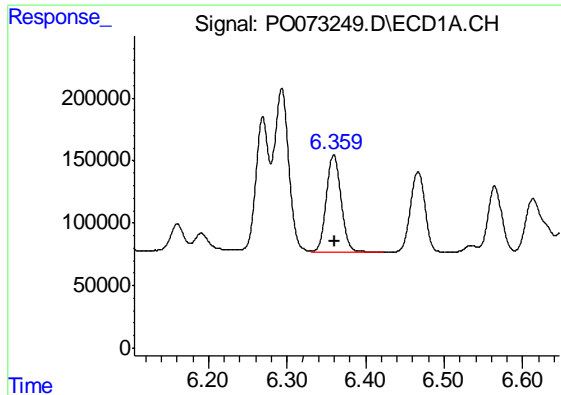
#4 AR-1016-2

R.T.: 6.293 min  
 Delta R.T.: 0.000 min  
 Response: 1690279  
 Conc: 616.56 ng/ml



#4 AR-1016-2

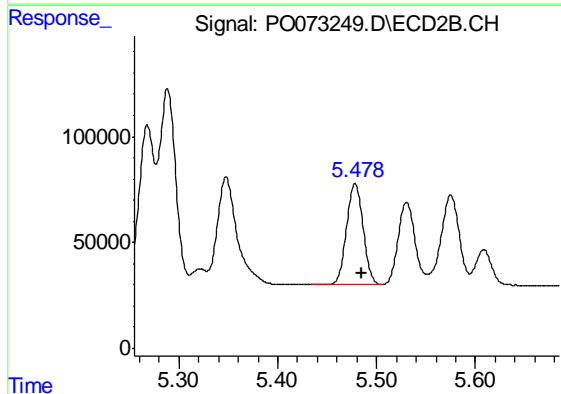
R.T.: 5.289 min  
 Delta R.T.: -0.006 min  
 Response: 1062584  
 Conc: 534.09 ng/ml



#5 AR-1016-3

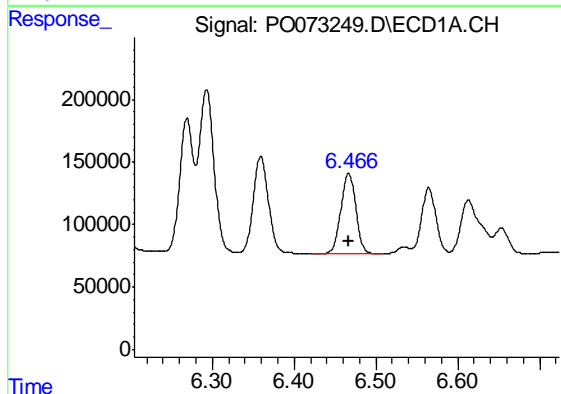
R.T.: 6.359 min  
Delta R.T.: -0.001 min  
Response: 1013152  
Conc: 607.92 ng/ml

Instrument :  
ECD\_O  
ClientSampleId :  
AR1660CCC500



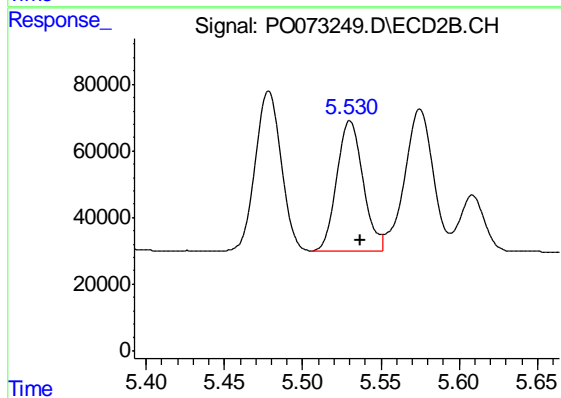
#5 AR-1016-3

R.T.: 5.478 min  
Delta R.T.: -0.006 min  
Response: 560565  
Conc: 589.03 ng/ml



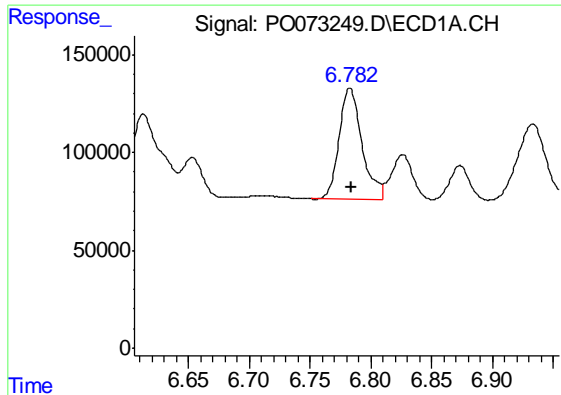
#6 AR-1016-4

R.T.: 6.467 min  
Delta R.T.: 0.000 min  
Response: 821325  
Conc: 609.31 ng/ml



#6 AR-1016-4

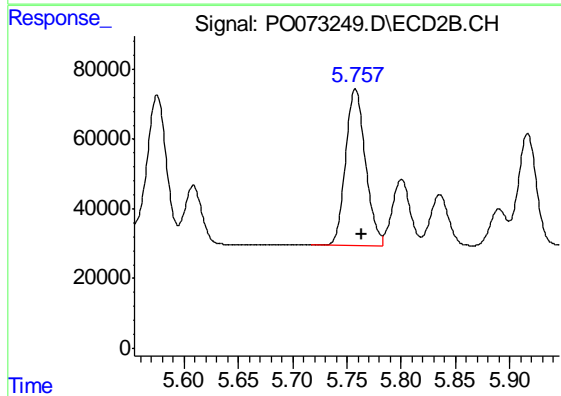
R.T.: 5.530 min  
Delta R.T.: -0.007 min  
Response: 465197  
Conc: 552.35 ng/ml



#7 AR-1016-5

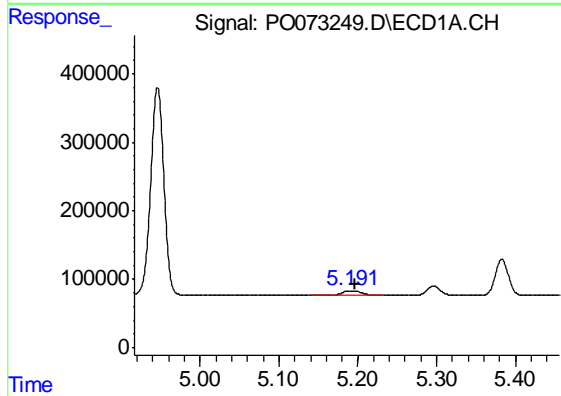
R.T.: 6.783 min  
 Delta R.T.: -0.002 min  
 Response: 738336  
 Conc: 650.85 ng/ml

Instrument :  
 ECD\_O  
 ClientSampleId :  
 AR1660CCC500



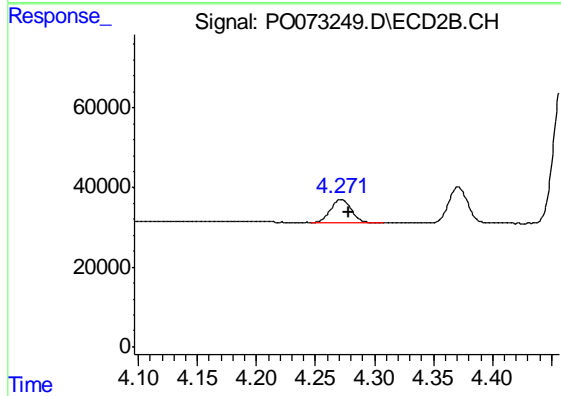
#7 AR-1016-5

R.T.: 5.758 min  
 Delta R.T.: -0.006 min  
 Response: 568603  
 Conc: 527.64 ng/ml



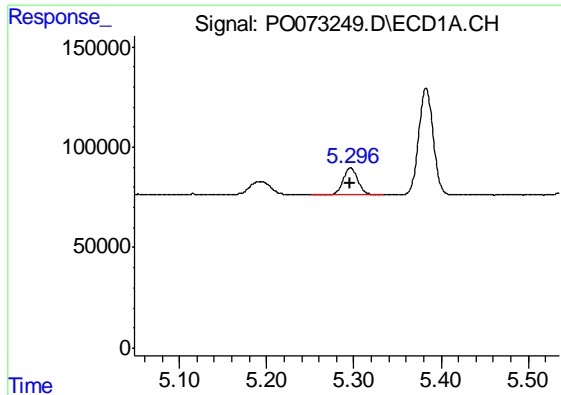
#8 AR-1221-1

R.T.: 5.192 min  
 Delta R.T.: -0.005 min  
 Response: 109083  
 Conc: 158.37 ng/ml



#8 AR-1221-1

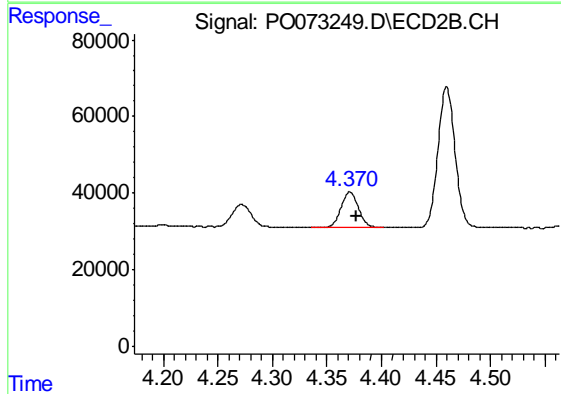
R.T.: 4.272 min  
 Delta R.T.: -0.007 min  
 Response: 72896  
 Conc: 153.80 ng/ml



#9 AR-1221-2

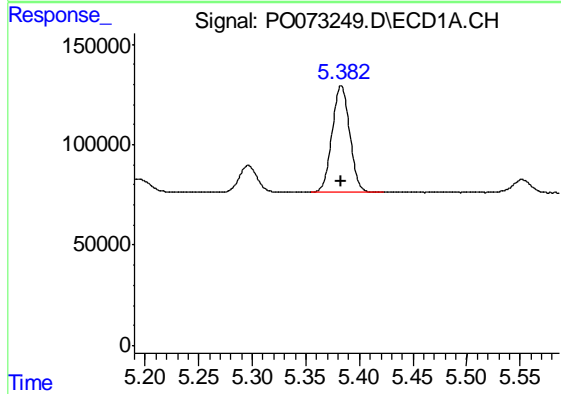
R.T.: 5.296 min  
 Delta R.T.: 0.000 min  
 Response: 157694  
 Conc: 309.95 ng/ml

Instrument :  
 ECD\_O  
 ClientSampleId :  
 AR1660CCC500



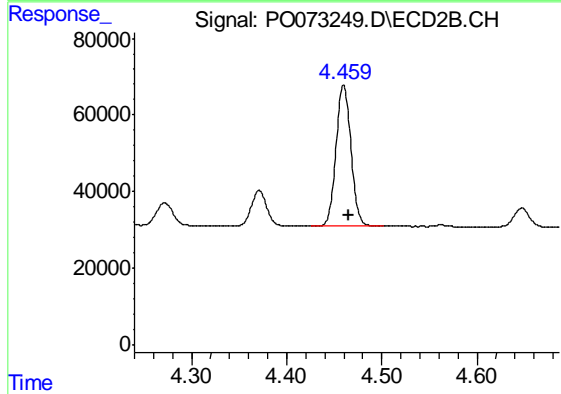
#9 AR-1221-2

R.T.: 4.371 min  
 Delta R.T.: -0.006 min  
 Response: 102755  
 Conc: 286.94 ng/ml



#10 AR-1221-3

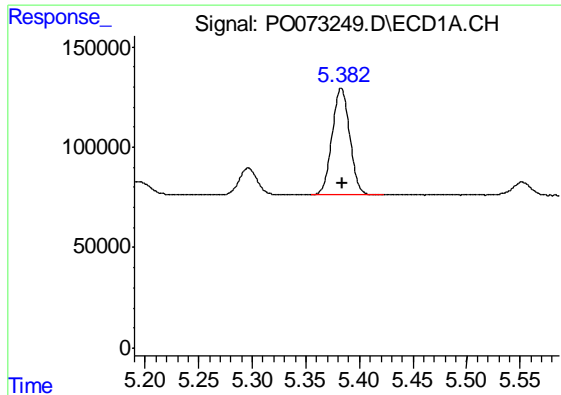
R.T.: 5.383 min  
 Delta R.T.: 0.000 min  
 Response: 609867  
 Conc: 389.87 ng/ml



#10 AR-1221-3

R.T.: 4.460 min  
 Delta R.T.: -0.005 min  
 Response: 400967  
 Conc: 365.42 ng/ml

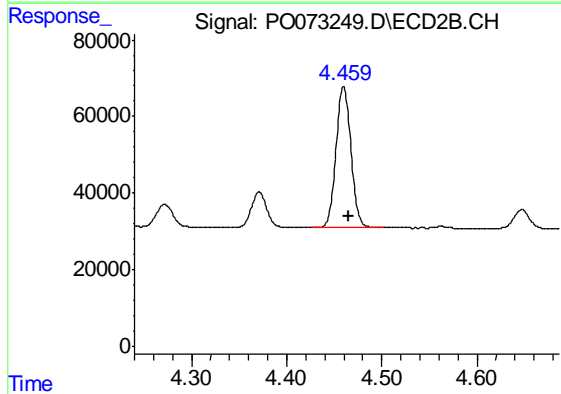




#11 AR-1232-1

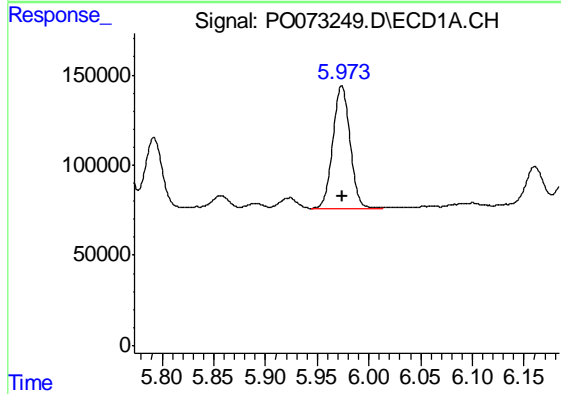
R.T.: 5.383 min  
 Delta R.T.: 0.000 min  
 Response: 609867  
 Conc: 487.07 ng/ml

Instrument :  
 ECD\_O  
 ClientSampleId :  
 AR1660CCC500



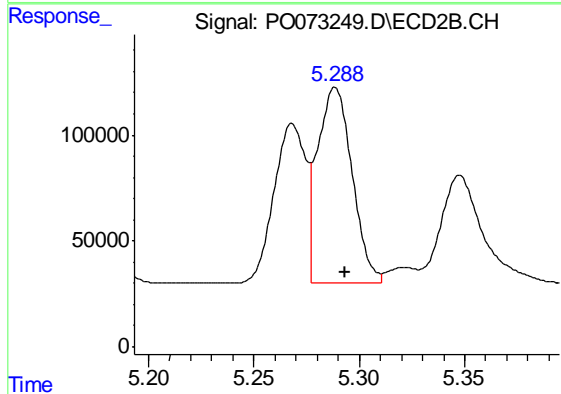
#11 AR-1232-1

R.T.: 4.460 min  
 Delta R.T.: -0.005 min  
 Response: 400967  
 Conc: 465.82 ng/ml



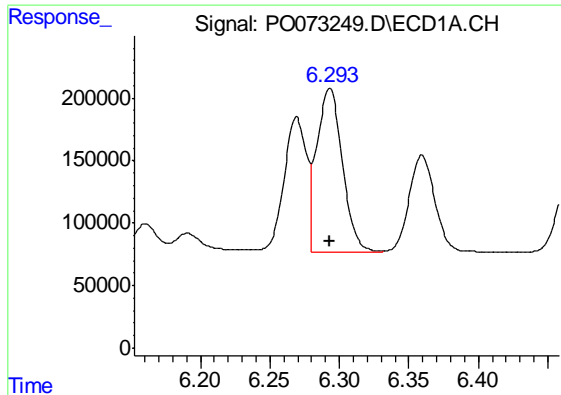
#12 AR-1232-2

R.T.: 5.974 min  
 Delta R.T.: 0.000 min  
 Response: 790651  
 Conc: 1277.81 ng/ml



#12 AR-1232-2

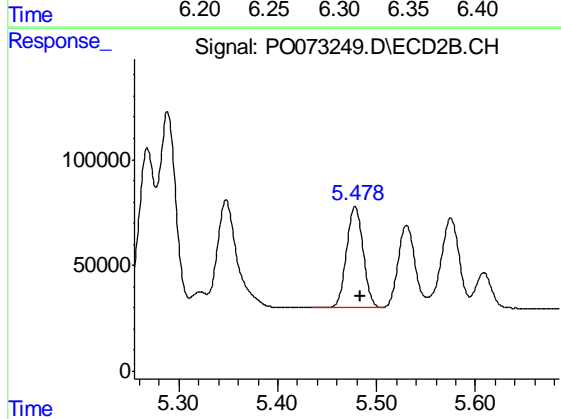
R.T.: 5.289 min  
 Delta R.T.: -0.005 min  
 Response: 1062584  
 Conc: 1203.02 ng/ml



#13 AR-1232-3

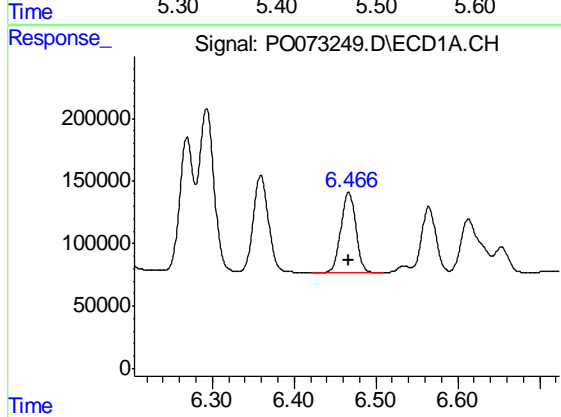
R.T.: 6.293 min  
 Delta R.T.: 0.000 min  
 Response: 1690279  
 Conc: 1343.62 ng/ml

Instrument :  
 ECD\_O  
 ClientSampleId :  
 AR1660CCC500



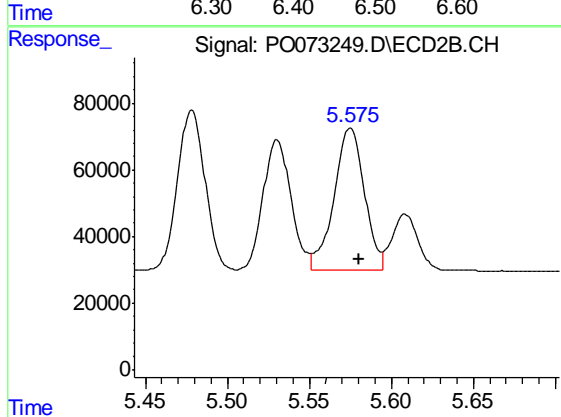
#13 AR-1232-3

R.T.: 5.478 min  
 Delta R.T.: -0.005 min  
 Response: 560565  
 Conc: 1313.63 ng/ml



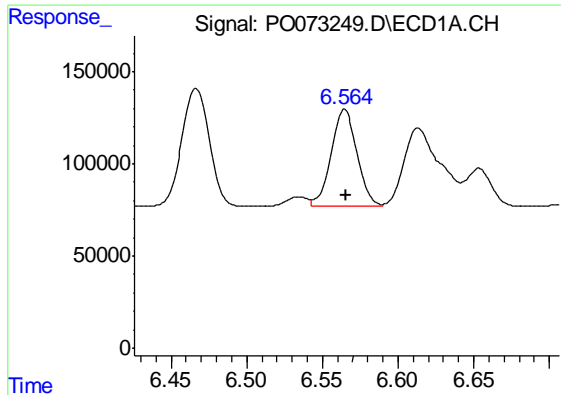
#14 AR-1232-4

R.T.: 6.467 min  
 Delta R.T.: 0.000 min  
 Response: 821325  
 Conc: 1346.27 ng/ml



#14 AR-1232-4

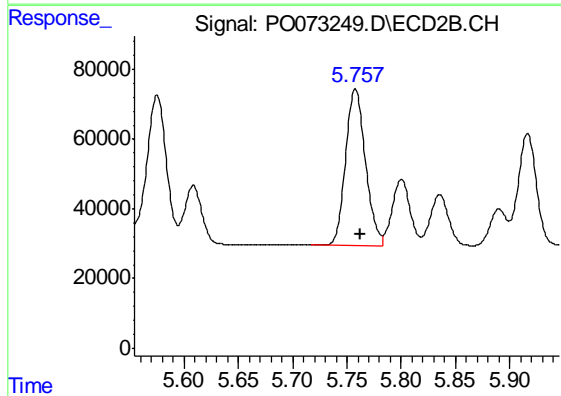
R.T.: 5.575 min  
 Delta R.T.: -0.005 min  
 Response: 549400  
 Conc: 1304.80 ng/ml



#15 AR-1232-5

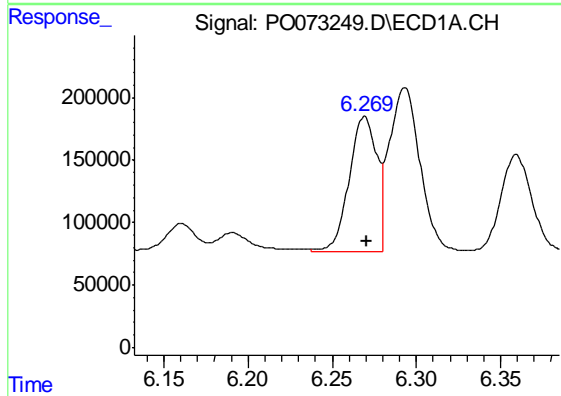
R.T.: 6.564 min  
 Delta R.T.: 0.000 min  
 Response: 639264  
 Conc: 1527.37 ng/ml

Instrument :  
 ECD\_O  
 ClientSampleId :  
 AR1660CCC500



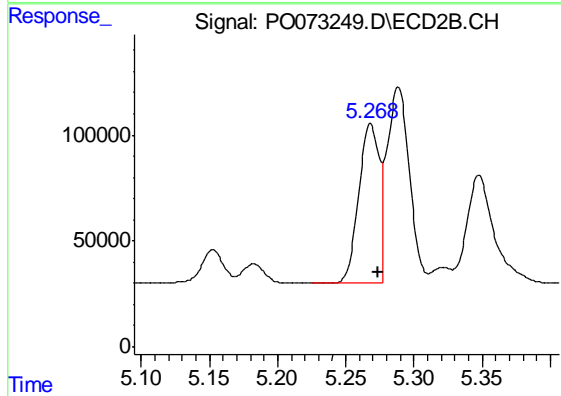
#15 AR-1232-5

R.T.: 5.758 min  
 Delta R.T.: -0.005 min  
 Response: 568603  
 Conc: 1270.16 ng/ml



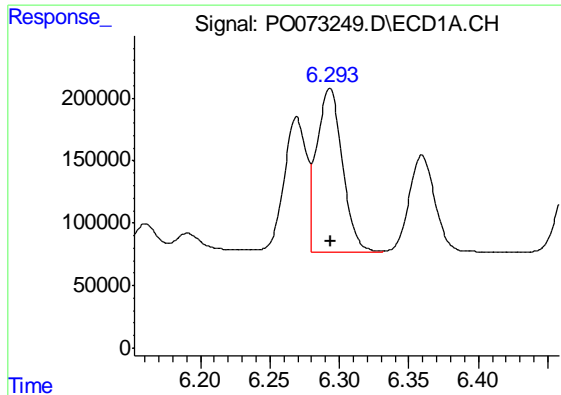
#16 AR-1242-1

R.T.: 6.269 min  
 Delta R.T.: -0.001 min  
 Response: 1236886  
 Conc: 711.44 ng/ml



#16 AR-1242-1

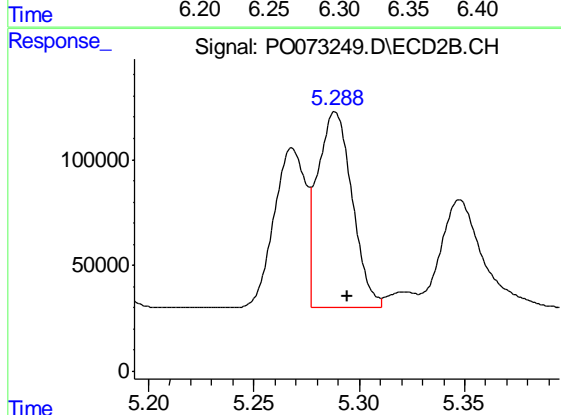
R.T.: 5.268 min  
 Delta R.T.: -0.006 min  
 Response: 786924  
 Conc: 629.26 ng/ml



#17 AR-1242-2

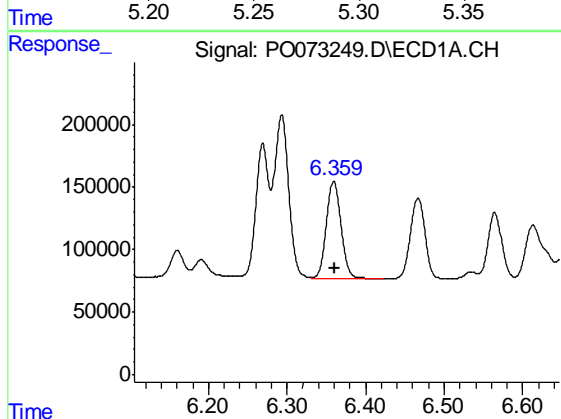
R.T.: 6.293 min  
Delta R.T.: -0.001 min  
Response: 1690279  
Conc: 705.70 ng/ml

Instrument :  
ECD\_O  
ClientSampleId :  
AR1660CCC500



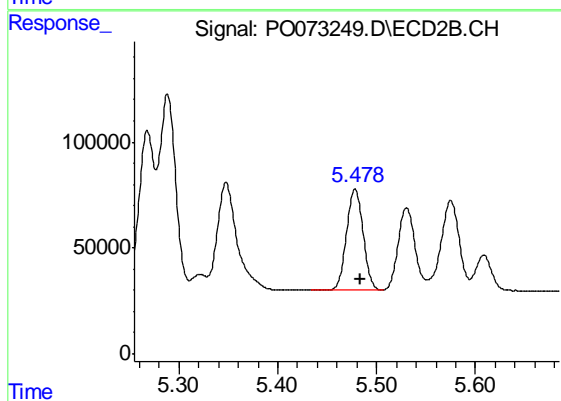
#17 AR-1242-2

R.T.: 5.289 min  
Delta R.T.: -0.006 min  
Response: 1062584  
Conc: 637.80 ng/ml



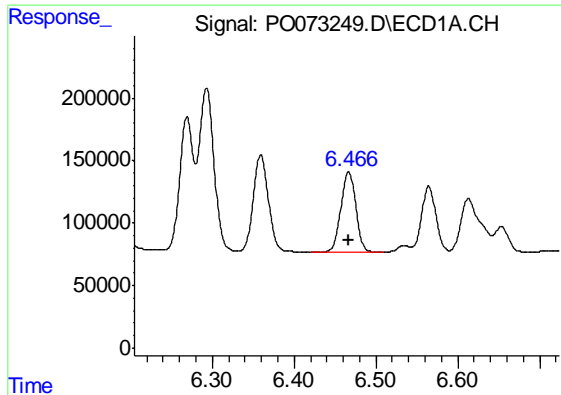
#18 AR-1242-3

R.T.: 6.359 min  
Delta R.T.: -0.001 min  
Response: 1013152  
Conc: 691.94 ng/ml



#18 AR-1242-3

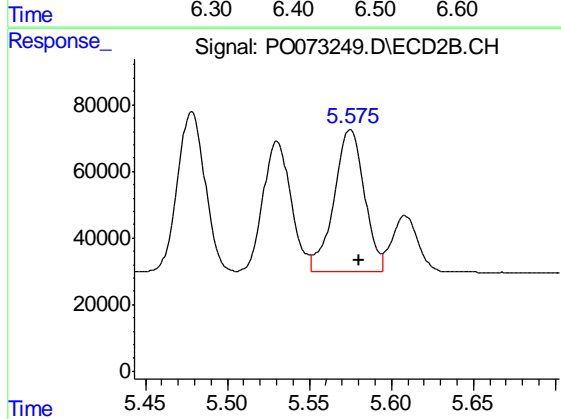
R.T.: 5.478 min  
Delta R.T.: -0.006 min  
Response: 560565  
Conc: 672.48 ng/ml



#19 AR-1242-4

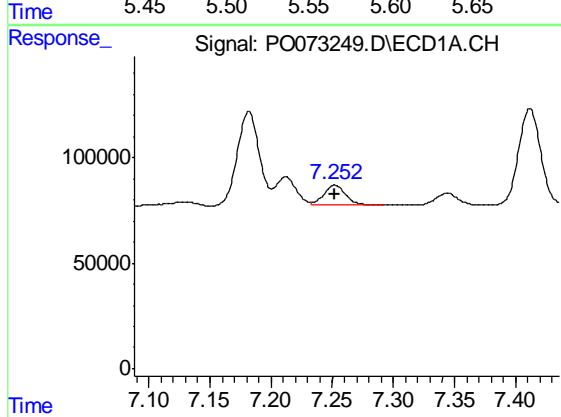
R.T.: 6.467 min  
 Delta R.T.: 0.000 min  
 Response: 821325  
 Conc: 681.61 ng/ml

Instrument :  
 ECD\_O  
 ClientSampleId :  
 AR1660CCC500



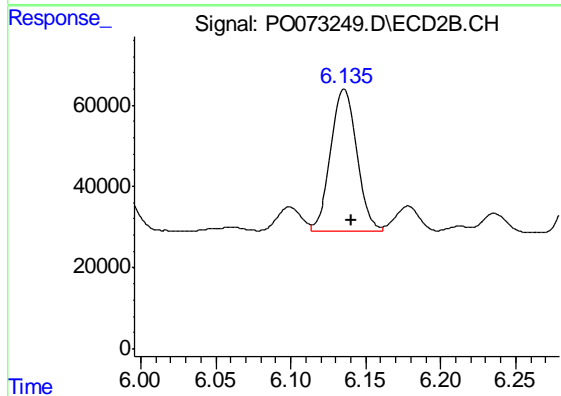
#19 AR-1242-4

R.T.: 5.575 min  
 Delta R.T.: -0.005 min  
 Response: 549400  
 Conc: 626.80 ng/ml



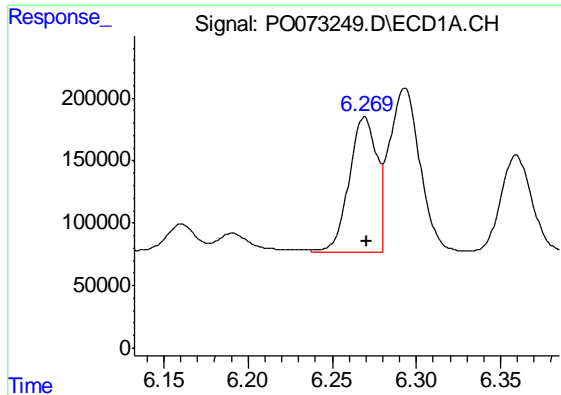
#20 AR-1242-5

R.T.: 7.252 min  
 Delta R.T.: 0.000 min  
 Response: 121606  
 Conc: 92.91 ng/ml



#20 AR-1242-5

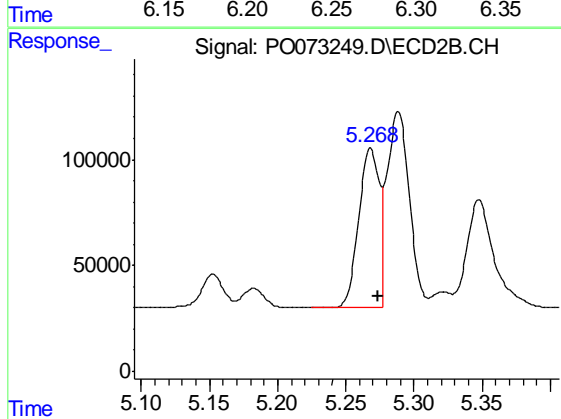
R.T.: 6.136 min  
 Delta R.T.: -0.005 min  
 Response: 421941  
 Conc: 371.12 ng/ml



#21 AR-1248-1

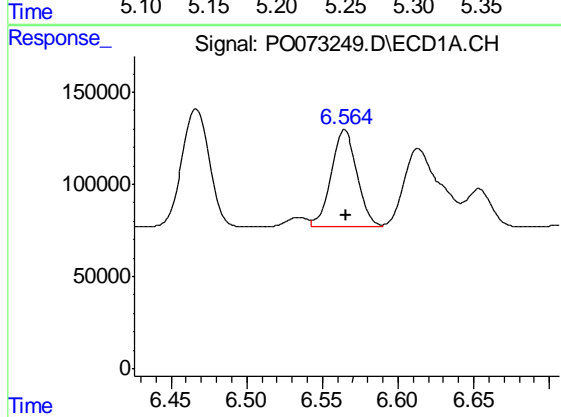
R.T.: 6.269 min  
 Delta R.T.: -0.001 min  
 Response: 1236886  
 Conc: 918.69 ng/ml

Instrument :  
 ECD\_O  
 ClientSampleId :  
 AR1660CCC500



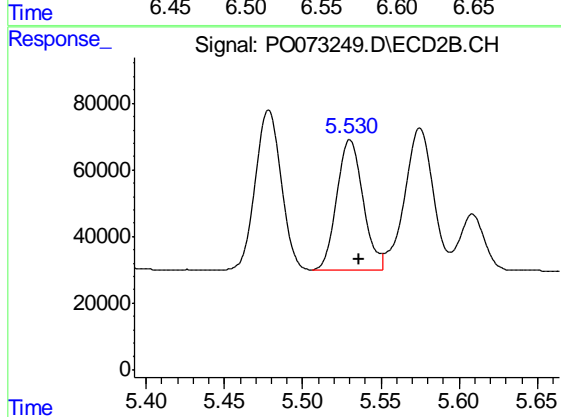
#21 AR-1248-1

R.T.: 5.268 min  
 Delta R.T.: -0.006 min  
 Response: 786924  
 Conc: 839.36 ng/ml



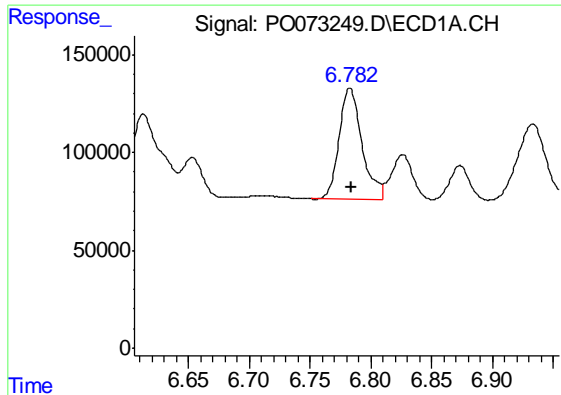
#22 AR-1248-2

R.T.: 6.564 min  
 Delta R.T.: -0.002 min  
 Response: 639264  
 Conc: 368.49 ng/ml



#22 AR-1248-2

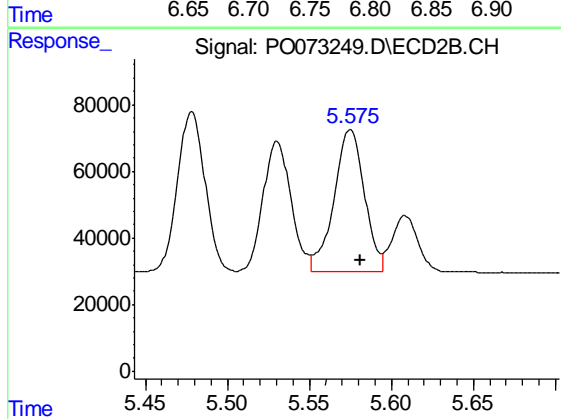
R.T.: 5.530 min  
 Delta R.T.: -0.006 min  
 Response: 465197  
 Conc: 359.17 ng/ml



#23 AR-1248-3

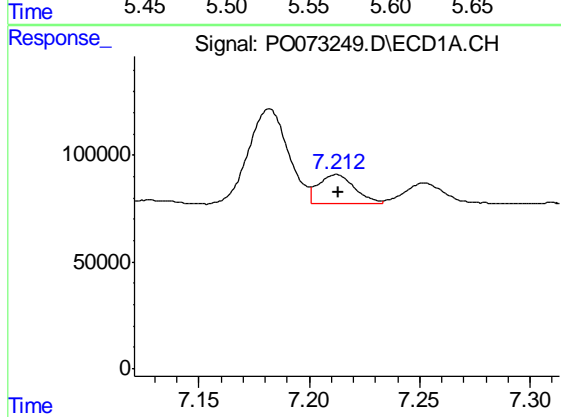
R.T.: 6.783 min  
 Delta R.T.: -0.001 min  
 Response: 738336  
 Conc: 393.81 ng/ml

Instrument :  
 ECD\_O  
 ClientSampleId :  
 AR1660CCC500



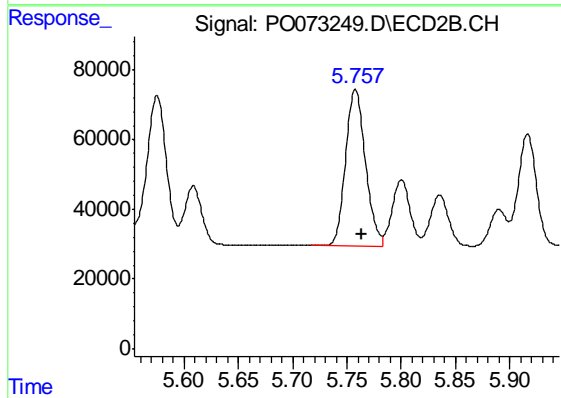
#23 AR-1248-3

R.T.: 5.575 min  
 Delta R.T.: -0.006 min  
 Response: 549400  
 Conc: 406.63 ng/ml



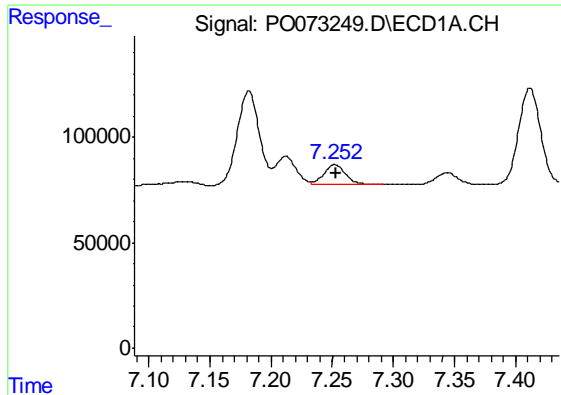
#24 AR-1248-4

R.T.: 7.212 min  
 Delta R.T.: -0.001 min  
 Response: 157518  
 Conc: 65.15 ng/ml



#24 AR-1248-4

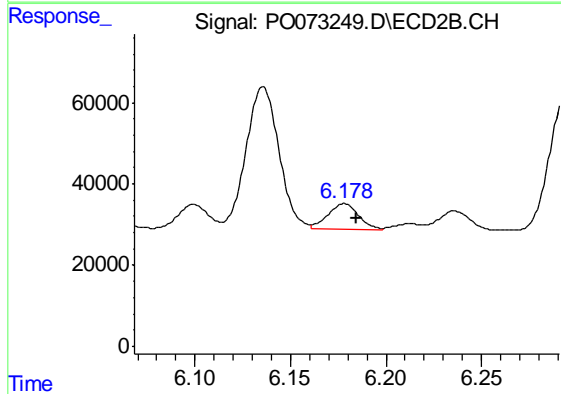
R.T.: 5.758 min  
 Delta R.T.: -0.006 min  
 Response: 568603  
 Conc: 358.53 ng/ml



#25 AR-1248-5

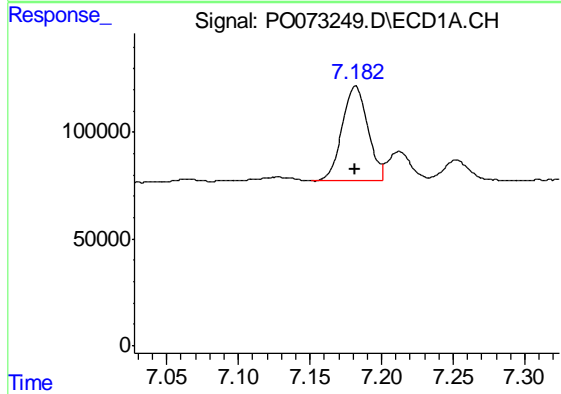
R.T.: 7.252 min  
 Delta R.T.: 0.000 min  
 Response: 121606  
 Conc: 52.98 ng/ml

Instrument :  
 ECD\_O  
 ClientSampleId :  
 AR1660CCC500



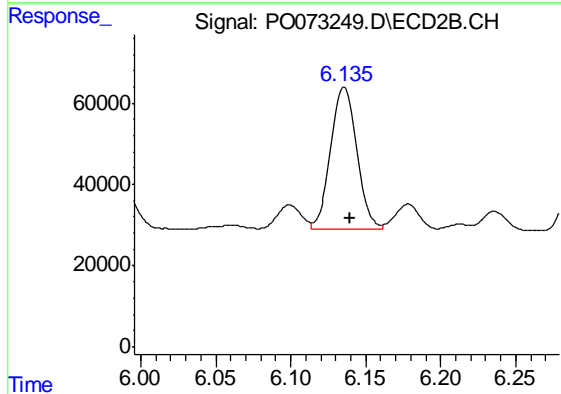
#25 AR-1248-5

R.T.: 6.178 min  
 Delta R.T.: -0.007 min  
 Response: 70747  
 Conc: 44.43 ng/ml



#26 AR-1254-1

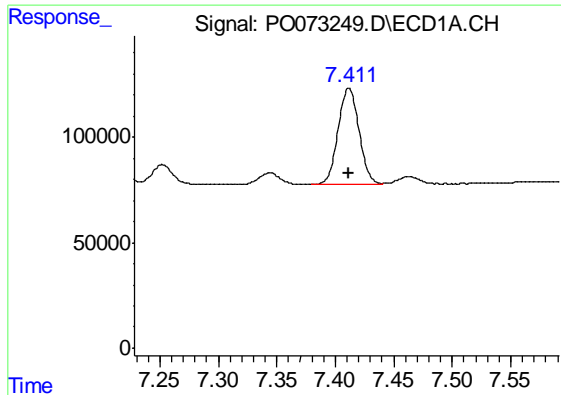
R.T.: 7.182 min  
 Delta R.T.: 0.000 min  
 Response: 557029  
 Conc: 238.07 ng/ml



#26 AR-1254-1

R.T.: 6.136 min  
 Delta R.T.: -0.004 min  
 Response: 421941  
 Conc: 175.62 ng/ml

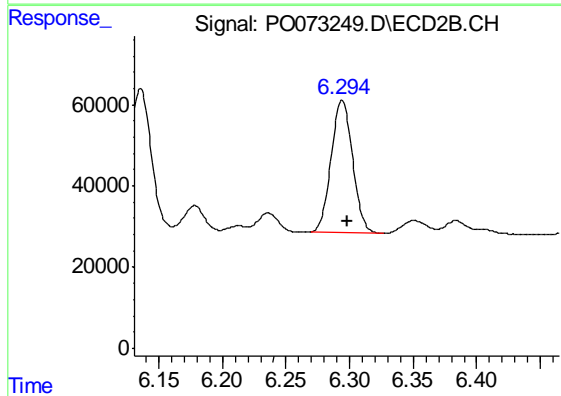




#27 AR-1254-2

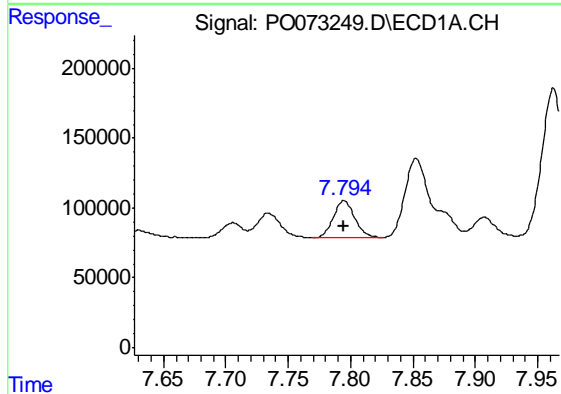
R.T.: 7.412 min  
 Delta R.T.: 0.000 min  
 Response: 570587  
 Conc: 161.93 ng/ml

Instrument :  
 ECD\_O  
 ClientSampleId :  
 AR1660CCC500



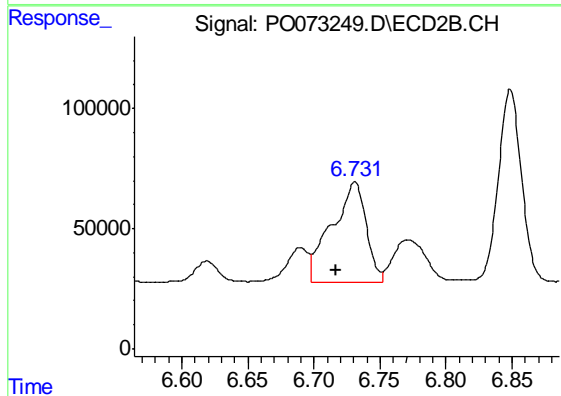
#27 AR-1254-2

R.T.: 6.294 min  
 Delta R.T.: -0.005 min  
 Response: 385261  
 Conc: 180.01 ng/ml



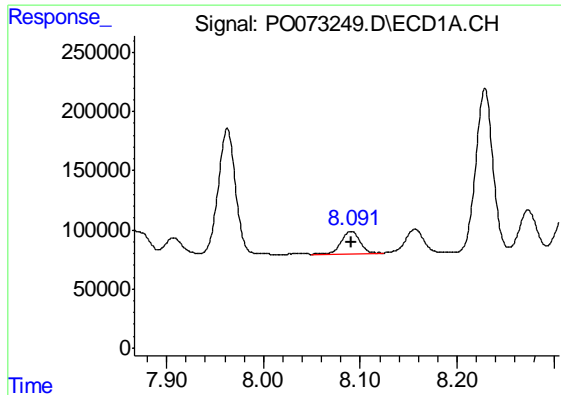
#28 AR-1254-3

R.T.: 7.795 min  
 Delta R.T.: 0.000 min  
 Response: 319098  
 Conc: 88.73 ng/ml



#28 AR-1254-3

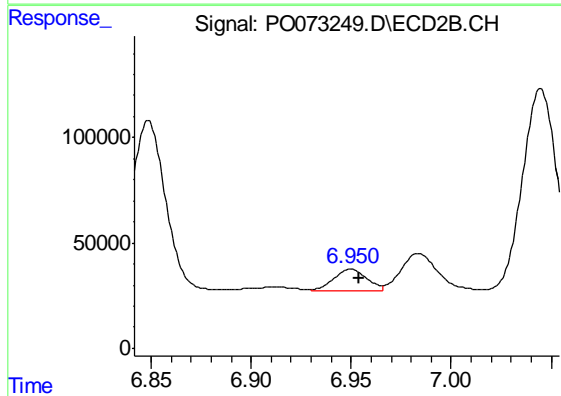
R.T.: 6.731 min  
 Delta R.T.: 0.015 min  
 Response: 752990  
 Conc: 223.83 ng/ml



#29 AR-1254-4

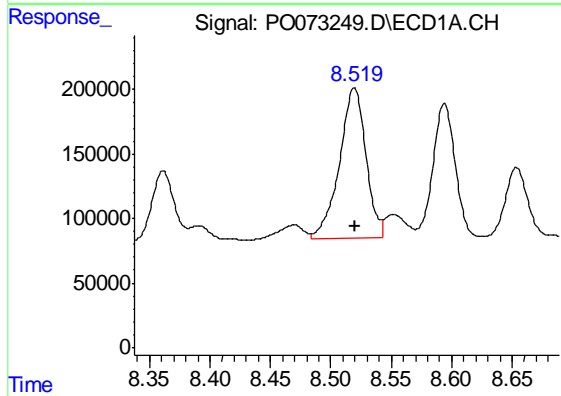
R.T.: 8.091 min  
 Delta R.T.: 0.000 min  
 Response: 250819  
 Conc: 83.35 ng/ml

Instrument :  
 ECD\_O  
 ClientSampleId :  
 AR1660CCC500



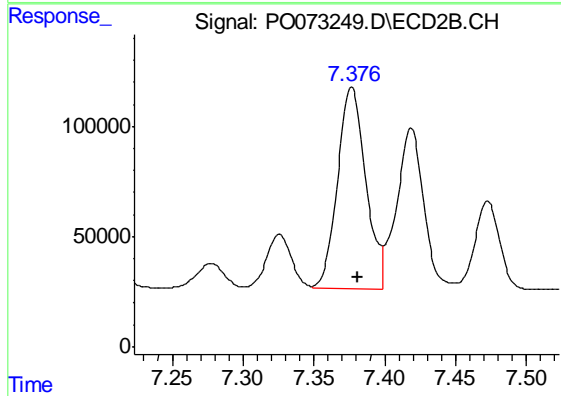
#29 AR-1254-4

R.T.: 6.950 min  
 Delta R.T.: -0.004 min  
 Response: 112687  
 Conc: 50.74 ng/ml



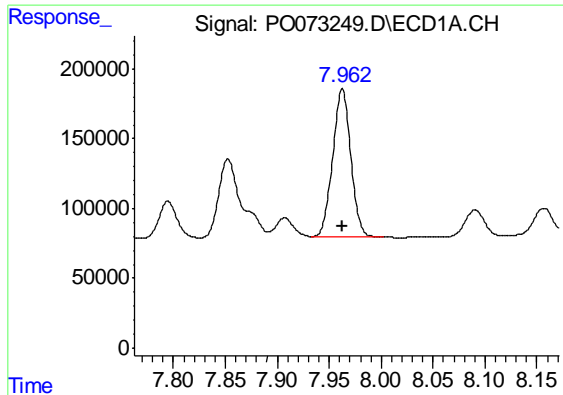
#30 AR-1254-5

R.T.: 8.519 min  
 Delta R.T.: 0.000 min  
 Response: 1791405  
 Conc: 618.85 ng/ml



#30 AR-1254-5

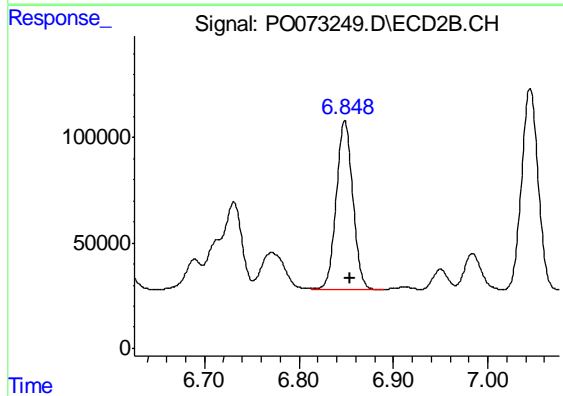
R.T.: 7.377 min  
 Delta R.T.: -0.004 min  
 Response: 1271838  
 Conc: 418.98 ng/ml



#31 AR-1260-1

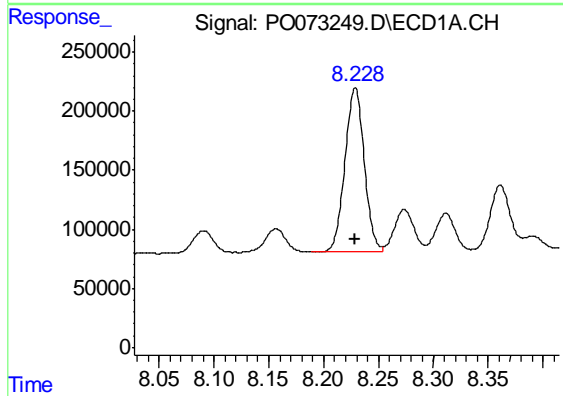
R.T.: 7.963 min  
 Delta R.T.: 0.000 min  
 Response: 1298618  
 Conc: 596.18 ng/ml

Instrument :  
 ECD\_O  
 ClientSampleId :  
 AR1660CCC500



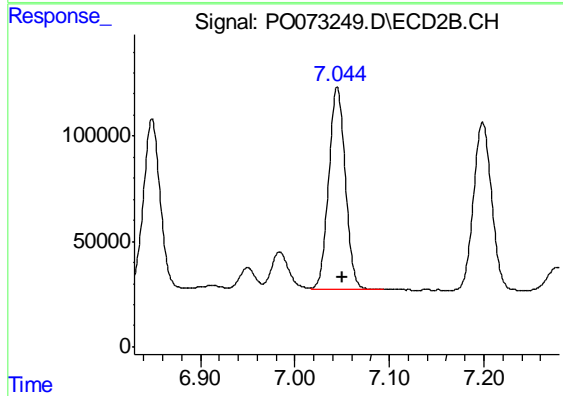
#31 AR-1260-1

R.T.: 6.849 min  
 Delta R.T.: -0.006 min  
 Response: 990442  
 Conc: 492.99 ng/ml



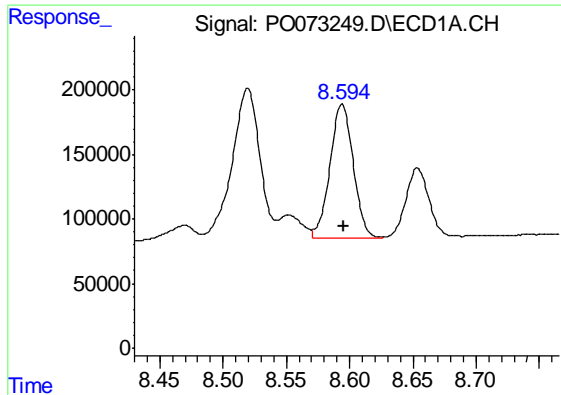
#32 AR-1260-2

R.T.: 8.229 min  
 Delta R.T.: 0.000 min  
 Response: 1694988  
 Conc: 625.65 ng/ml



#32 AR-1260-2

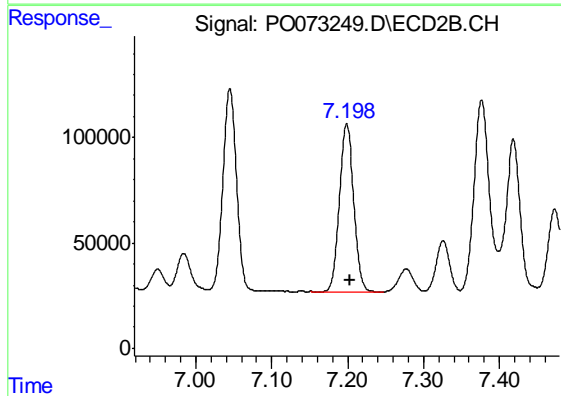
R.T.: 7.045 min  
 Delta R.T.: -0.006 min  
 Response: 1170397  
 Conc: 471.61 ng/ml



#33 AR-1260-3

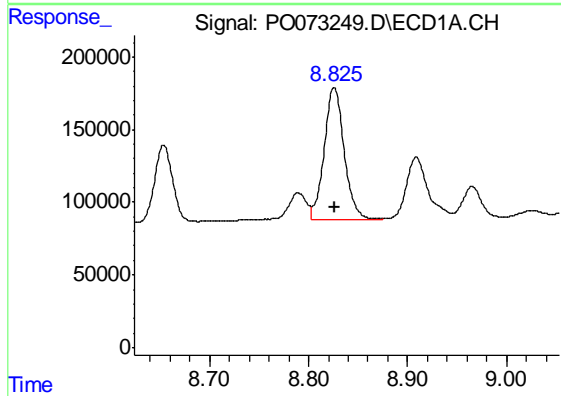
R.T.: 8.594 min  
Delta R.T.: -0.001 min  
Response: 1329453  
Conc: 645.87 ng/ml

Instrument :  
ECD\_O  
ClientSampleId :  
AR1660CCC500



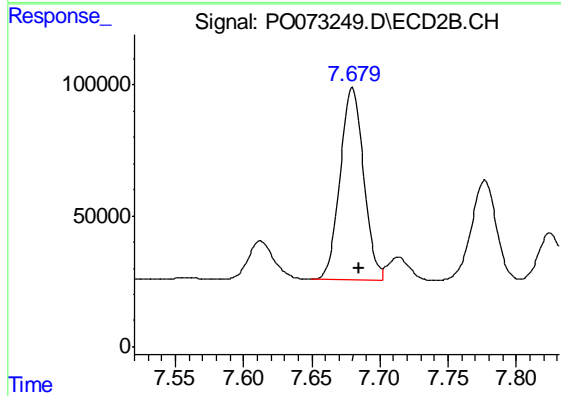
#33 AR-1260-3

R.T.: 7.199 min  
Delta R.T.: -0.005 min  
Response: 1061397  
Conc: 470.24 ng/ml



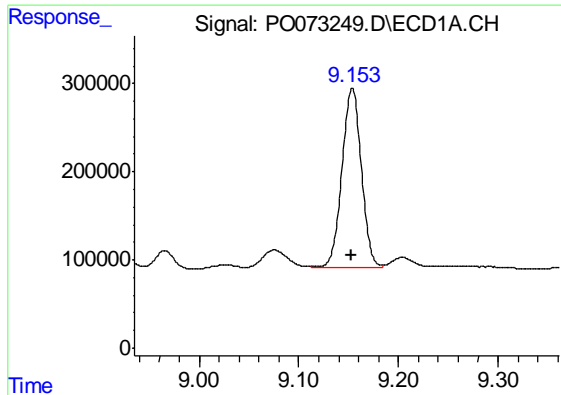
#34 AR-1260-4

R.T.: 8.826 min  
Delta R.T.: 0.000 min  
Response: 1279781  
Conc: 560.65 ng/ml



#34 AR-1260-4

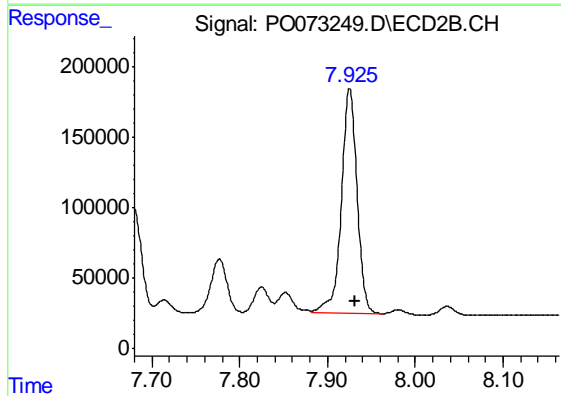
R.T.: 7.680 min  
Delta R.T.: -0.005 min  
Response: 882034  
Conc: 476.69 ng/ml



#35 AR-1260-5

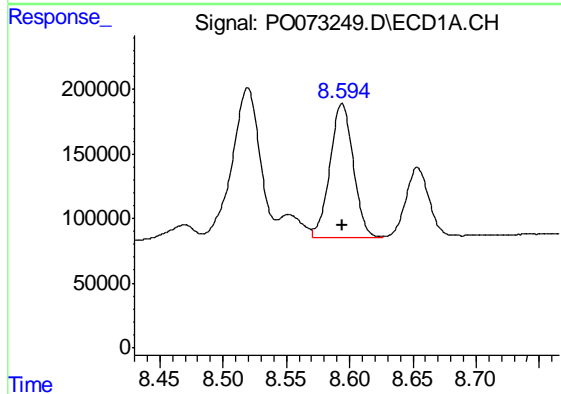
R.T.: 9.154 min  
 Delta R.T.: 0.000 min  
 Response: 2750324  
 Conc: 623.54 ng/ml

Instrument :  
 ECD\_O  
 ClientSampleId :  
 AR1660CCC500



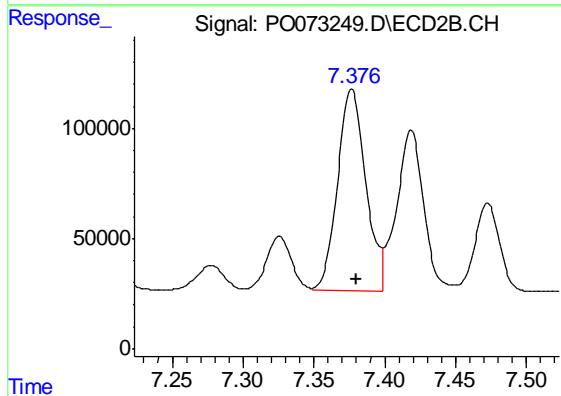
#35 AR-1260-5

R.T.: 7.925 min  
 Delta R.T.: -0.006 min  
 Response: 1993596  
 Conc: 465.56 ng/ml



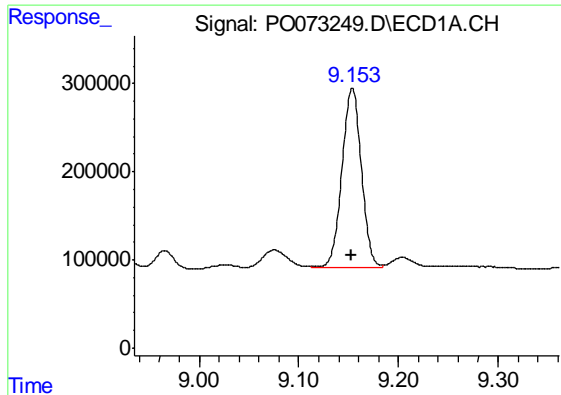
#36 AR-1262-1

R.T.: 8.594 min  
 Delta R.T.: 0.000 min  
 Response: 1329453  
 Conc: 390.12 ng/ml



#36 AR-1262-1

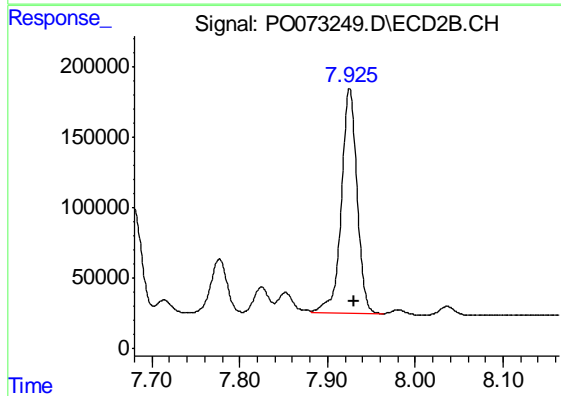
R.T.: 7.377 min  
 Delta R.T.: -0.003 min  
 Response: 1271838  
 Conc: 816.69 ng/ml



#37 AR-1262-2

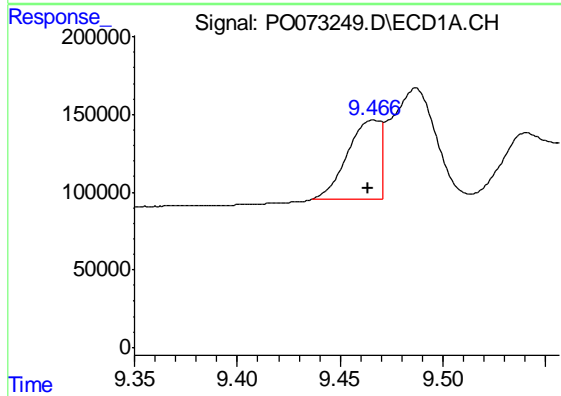
R.T.: 9.154 min  
 Delta R.T.: 0.001 min  
 Response: 2750324  
 Conc: 473.77 ng/ml

Instrument :  
 ECD\_O  
 ClientSampleId :  
 AR1660CCC500



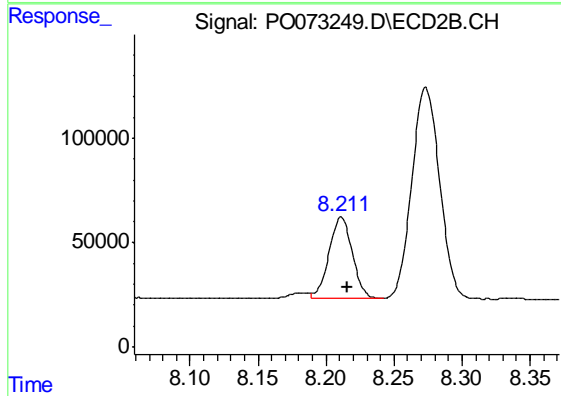
#37 AR-1262-2

R.T.: 7.925 min  
 Delta R.T.: -0.004 min  
 Response: 1993596  
 Conc: 394.04 ng/ml



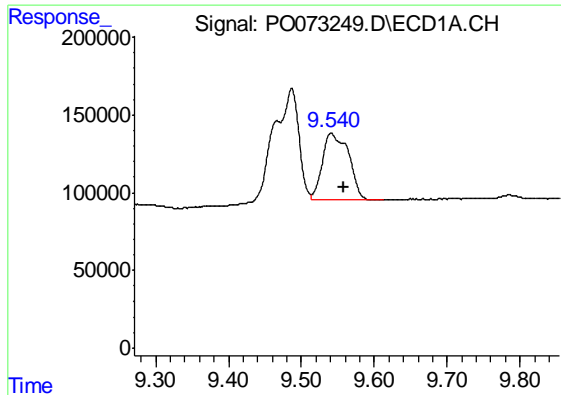
#38 AR-1262-3

R.T.: 9.466 min  
 Delta R.T.: 0.003 min  
 Response: 570921  
 Conc: 137.26 ng/ml



#38 AR-1262-3

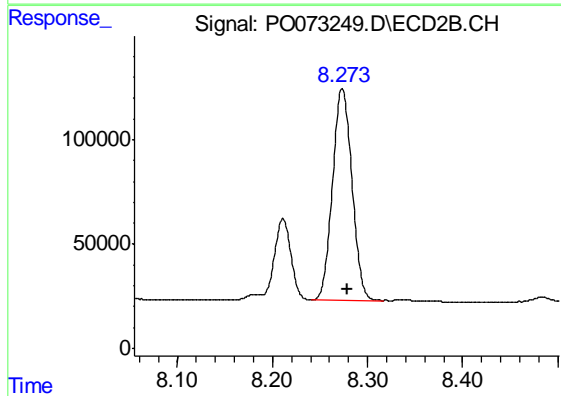
R.T.: 8.211 min  
 Delta R.T.: -0.005 min  
 Response: 468992  
 Conc: 231.03 ng/ml



#39 AR-1262-4

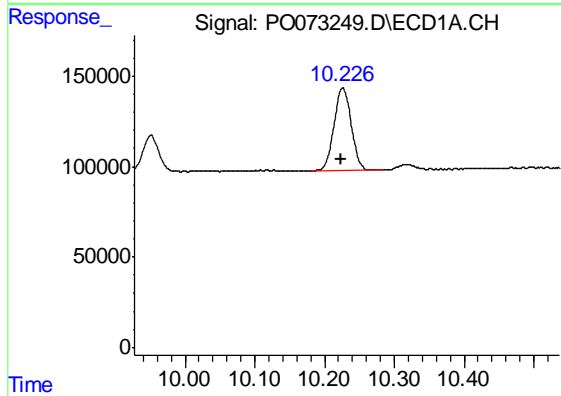
R.T.: 9.541 min  
 Delta R.T.: -0.017 min  
 Response: 1065817  
 Conc: 331.44 ng/ml

Instrument :  
 ECD\_O  
 ClientSampleId :  
 AR1660CCC500



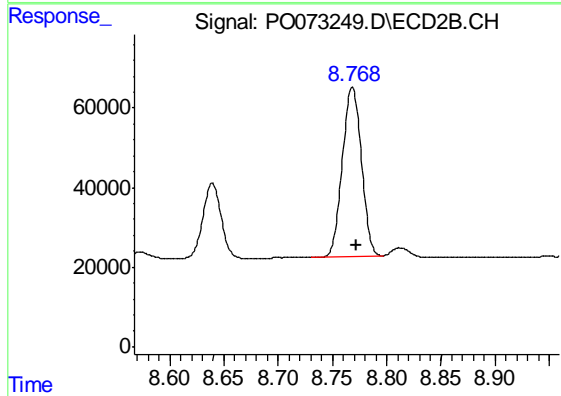
#39 AR-1262-4

R.T.: 8.273 min  
 Delta R.T.: -0.006 min  
 Response: 1444552  
 Conc: 393.42 ng/ml



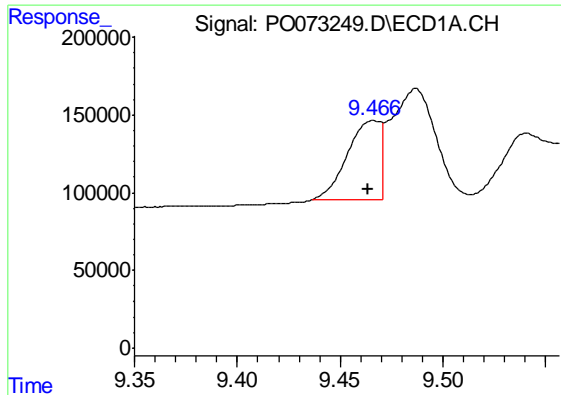
#40 AR-1262-5

R.T.: 10.226 min  
 Delta R.T.: 0.002 min  
 Response: 778332  
 Conc: 370.06 ng/ml



#40 AR-1262-5

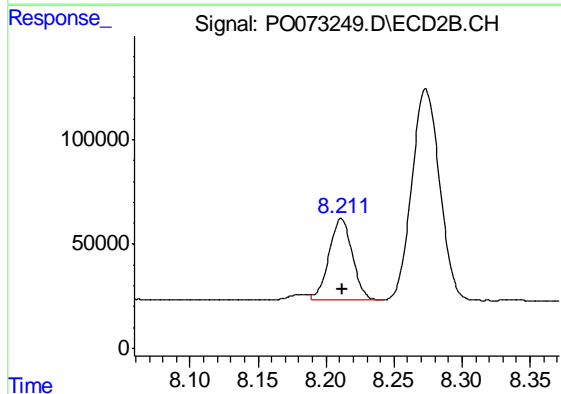
R.T.: 8.768 min  
 Delta R.T.: -0.004 min  
 Response: 519469  
 Conc: 296.99 ng/ml



#41 AR-1268-1

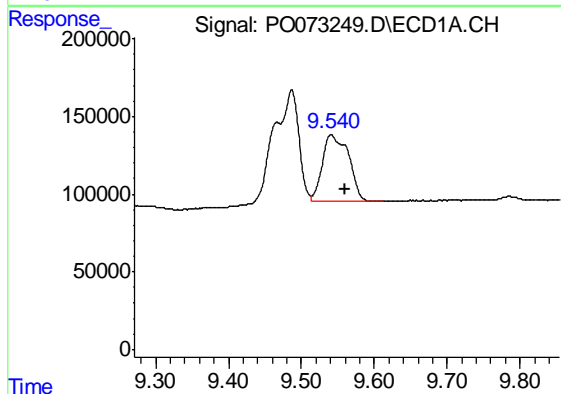
R.T.: 9.466 min  
 Delta R.T.: 0.003 min  
 Response: 570921  
 Conc: 85.04 ng/ml

Instrument :  
 ECD\_O  
 ClientSampleId :  
 AR1660CCC500



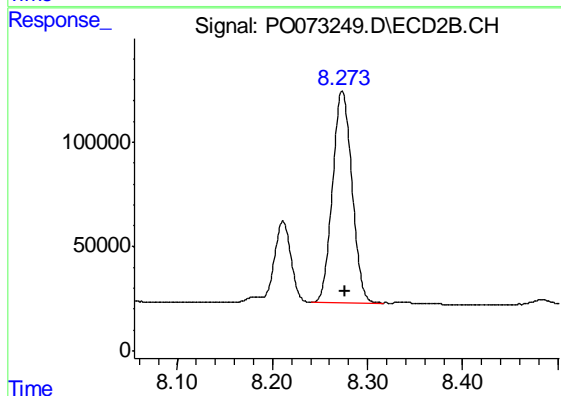
#41 AR-1268-1

R.T.: 8.211 min  
 Delta R.T.: 0.000 min  
 Response: 468992  
 Conc: 92.49 ng/ml



#42 AR-1268-2

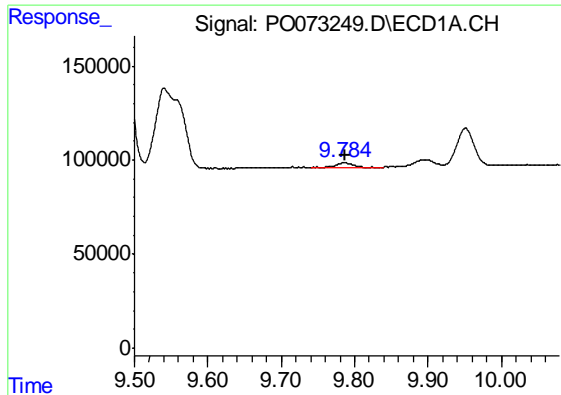
R.T.: 9.541 min  
 Delta R.T.: -0.019 min  
 Response: 1065817  
 Conc: 160.98 ng/ml



#42 AR-1268-2

R.T.: 8.273 min  
 Delta R.T.: -0.003 min  
 Response: 1444552  
 Conc: 324.33 ng/ml

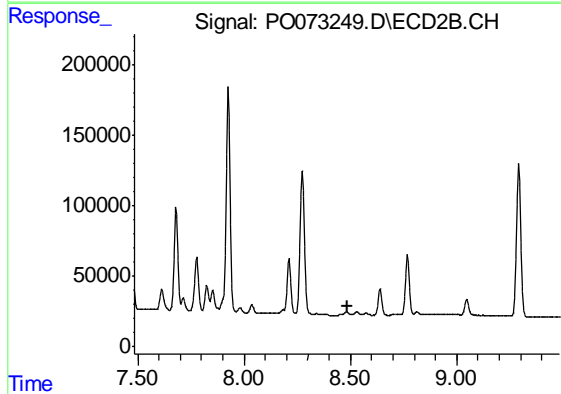




#43 AR-1268-3

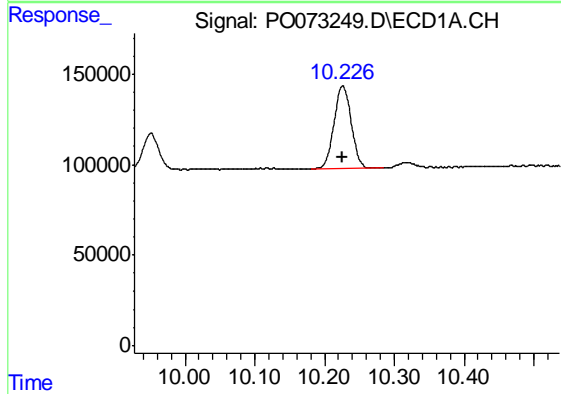
R.T.: 9.785 min  
 Delta R.T.: -0.001 min  
 Response: 41299  
 Conc: 7.13 ng/ml

Instrument :  
 ECD\_O  
 ClientSampleId :  
 AR1660CCC500



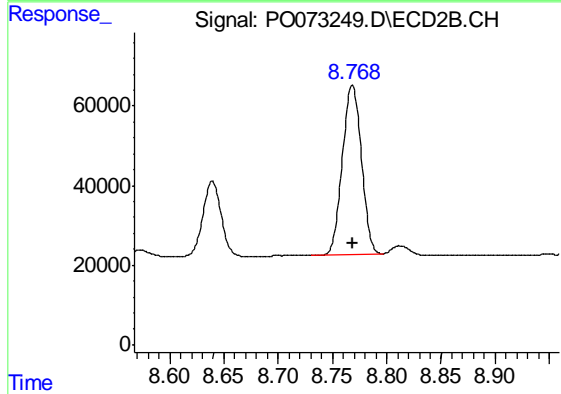
#43 AR-1268-3

R.T.: 0.000 min  
 Exp R.T. : 8.484 min  
 Response: 0  
 Conc: N.D.



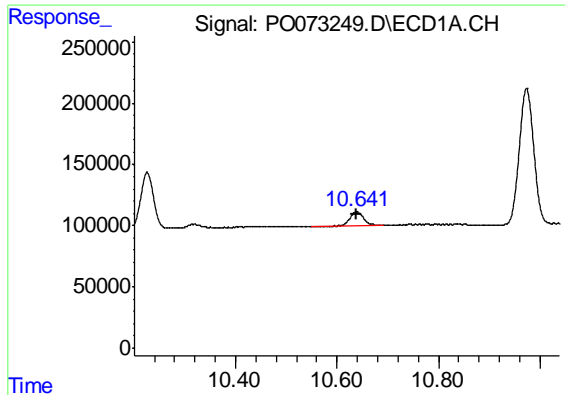
#44 AR-1268-4

R.T.: 10.226 min  
 Delta R.T.: 0.000 min  
 Response: 778332  
 Conc: 364.22 ng/ml



#44 AR-1268-4

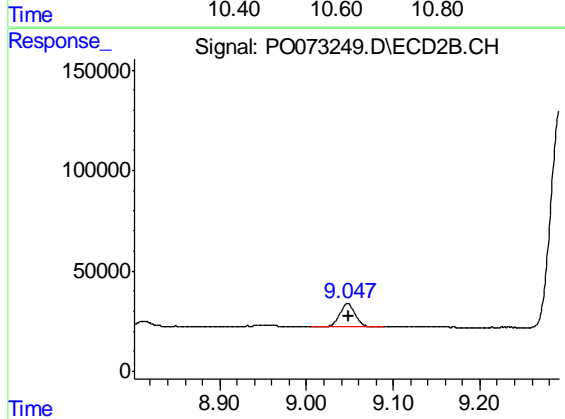
R.T.: 8.768 min  
 Delta R.T.: 0.000 min  
 Response: 519469  
 Conc: 311.54 ng/ml



#45 AR-1268-5

R.T.: 10.639 min  
Delta R.T.: 0.002 min  
Response: 221977  
Conc: 12.90 ng/ml

Instrument :  
ECD\_O  
ClientSampleId :  
AR1660CCC500



#45 AR-1268-5

R.T.: 9.048 min  
Delta R.T.: 0.000 min  
Response: 140209  
Conc: 11.58 ng/ml