

Data Path : Z:\pestpcbsrv\HPCHEM1\ECD\_0\Data\PO111323\  
 Data File : PO099663.D  
 Signal(s) : Signal #1: ECD1A.ch Signal #2: ECD2B.ch  
 Acq On : 13 Nov 2023 14:03  
 Operator : YP/AJ  
 Sample : AR1232ICC500  
 Misc :  
 ALS Vial : 9 Sample Multiplier: 1

Instrument :  
 ECD\_0  
 ClientSampleId :

Integration File signal 1: autoint1.e  
 Integration File signal 2: autoint2.e  
 Quant Time: Nov 13 14:52:52 2023  
 Quant Method : Z:\pestpcbsrv\HPCHEM1\ECD\_0\methods\PO111323.M  
 Quant Title : GC EXTRACTABLES  
 QLast Update : Mon Nov 13 14:49:32 2023  
 Response via : Initial Calibration  
 Integrator: ChemStation

Volume Inj. : 2 µl  
 Signal #1 Phase : ZB-MR1 Signal #2 Phase: ZB-MR2  
 Signal #1 Info : 30Mx0.32mmx 0.50µ Signal #2 Info : 30M x 0.32mm x 0.25µm

Compound	RT#1	RT#2	Resp#1	Resp#2	ng/ml	ng/ml
-----						
System Monitoring Compounds						
1) SA Tetrachlo...	4.491	3.720	89222660	63751744	50.000	50.000
2) SA Decachlor...	10.373	8.828	48470175	51461080	50.000	50.000
Target Compounds						
8) L2 AR-1221-1	4.702	3.938	7062414	5127557	336.349	339.580
9) L2 AR-1221-2	4.790	4.025	5982528	4085907	389.480	386.668
10) L2 AR-1221-3	4.867	4.103	18471071	12813950	410.089	420.607
11) L3 AR-1232-1	4.867	4.103	18471071	12813950	500.000	500.000
12) L3 AR-1232-2	5.405	4.846	9205724	8907224	500.000	500.000
13) L3 AR-1232-3	5.699	5.025	15781814	4583354	500.000	500.000
14) L3 AR-1232-4	5.862	5.109	7644122	4262949	500.000	500.000
15) L3 AR-1232-5	5.954	5.284	6426904	4587778	500.000	500.000
-----						

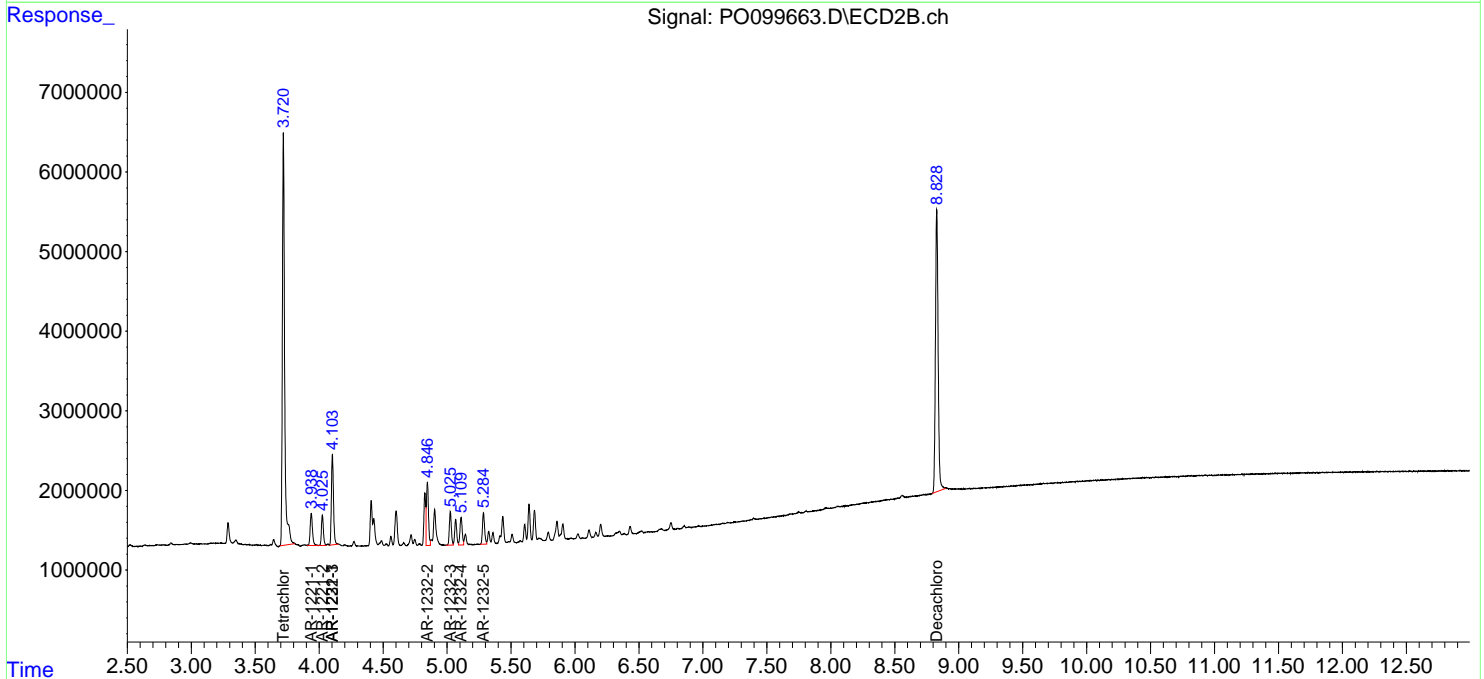
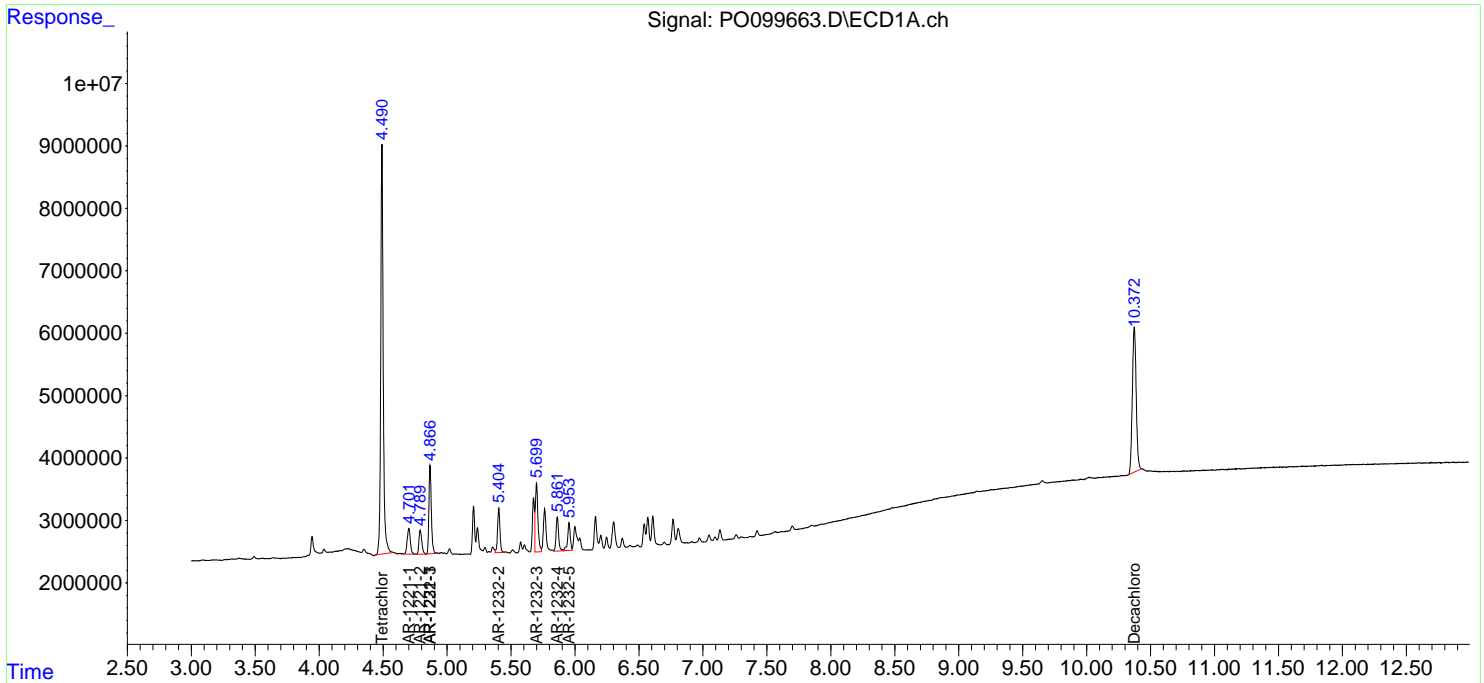
(f)=RT Delta > 1/2 Window (#)=Amounts differ by > 25% (m)=manual int.

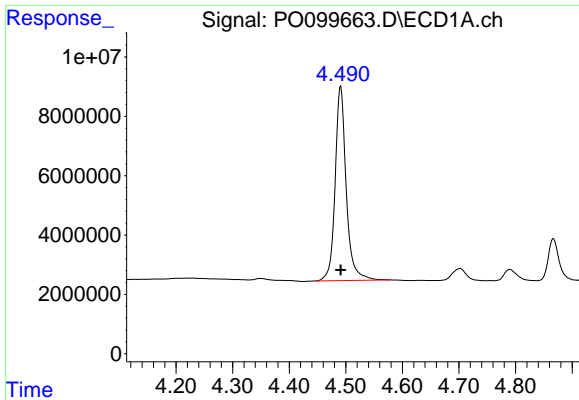
Data Path : Z:\pestpcbsrv\HPCHEM1\ECD\_O\Data\PO111323\  
 Data File : PO099663.D  
 Signal(s) : Signal #1: ECD1A.ch Signal #2: ECD2B.ch  
 Acq On : 13 Nov 2023 14:03  
 Operator : YP/AJ  
 Sample : AR1232ICC500  
 Misc :  
 ALS Vial : 9 Sample Multiplier: 1

Instrument :  
 ECD\_O  
 ClientSampleId :

Integration File signal 1: autoint1.e  
 Integration File signal 2: autoint2.e  
 Quant Time: Nov 13 14:52:52 2023  
 Quant Method : Z:\pestpcbsrv\HPCHEM1\ECD\_O\methods\PO111323.M  
 Quant Title : GC EXTRACTABLES  
 QLast Update : Mon Nov 13 14:49:32 2023  
 Response via : Initial Calibration  
 Integrator: ChemStation

Volume Inj. : 2 µl  
 Signal #1 Phase : ZB-MR1 Signal #2 Phase: ZB-MR2  
 Signal #1 Info : 30Mx0.32mmx 0.50µ Signal #2 Info : 30M x 0.32mm x 0.25µm

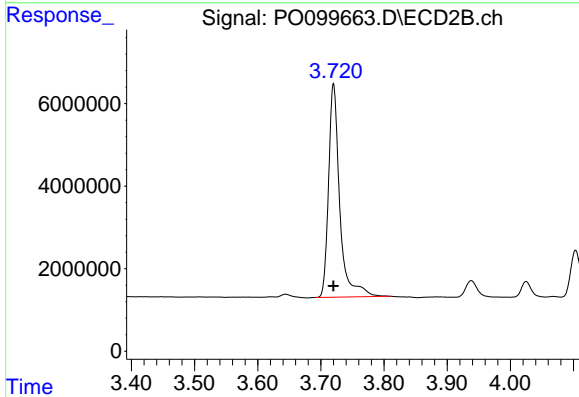




#1 Tetrachloro-m-xylene

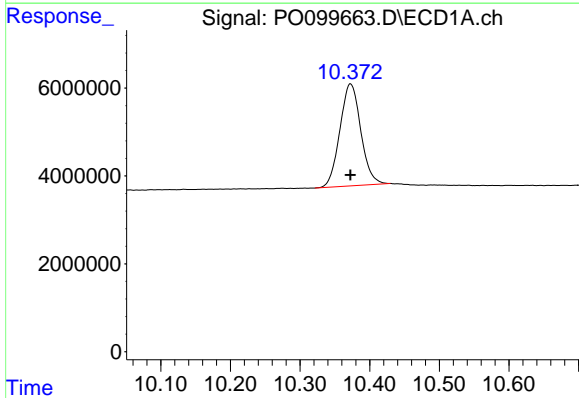
R.T.: 4.491 min  
 Delta R.T.: 0.000 min  
 Response: 89222660  
 Conc: 50.00 ng/ml

Instrument :  
 ECD\_O  
 ClientSampleId :



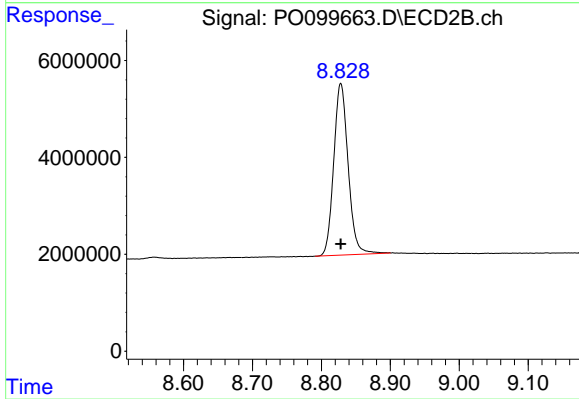
#1 Tetrachloro-m-xylene

R.T.: 3.720 min  
 Delta R.T.: 0.000 min  
 Response: 63751744  
 Conc: 50.00 ng/ml



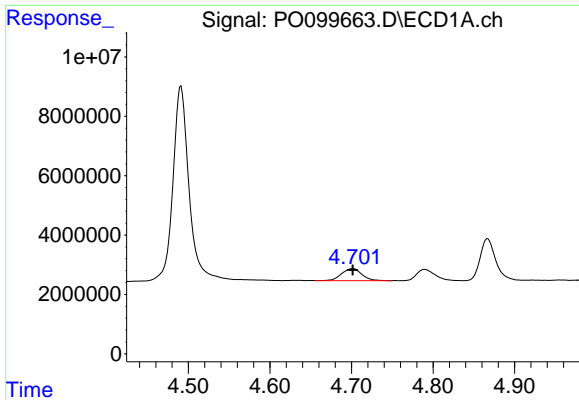
#2 Decachlorobiphenyl

R.T.: 10.373 min  
 Delta R.T.: 0.000 min  
 Response: 48470175  
 Conc: 50.00 ng/ml



#2 Decachlorobiphenyl

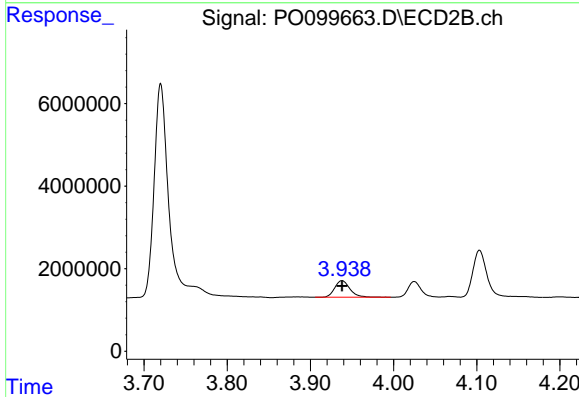
R.T.: 8.828 min  
 Delta R.T.: 0.000 min  
 Response: 51461080  
 Conc: 50.00 ng/ml



#8 AR-1221-1

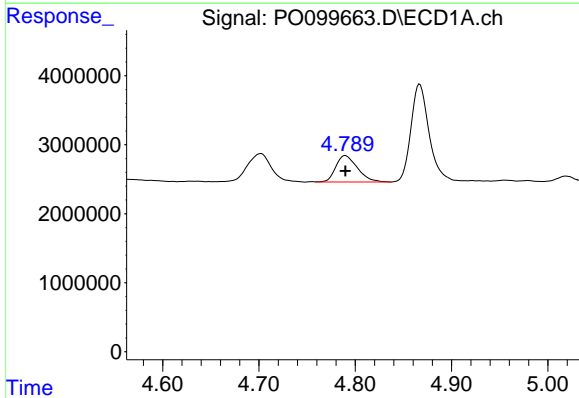
R.T.: 4.702 min  
 Delta R.T.: 0.000 min  
 Response: 7062414  
 Conc: 336.35 ng/ml

Instrument :  
 ECD\_O  
 ClientSampleId :



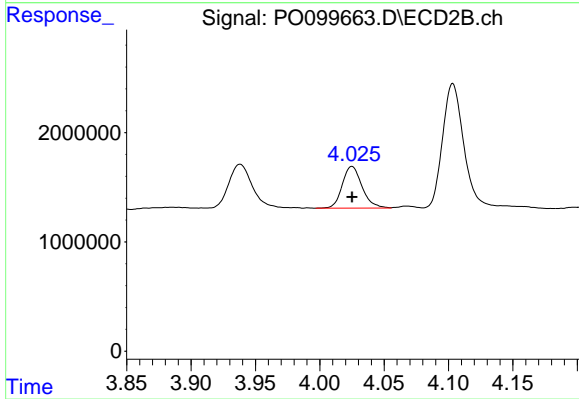
#8 AR-1221-1

R.T.: 3.938 min  
 Delta R.T.: 0.000 min  
 Response: 5127557  
 Conc: 339.58 ng/ml



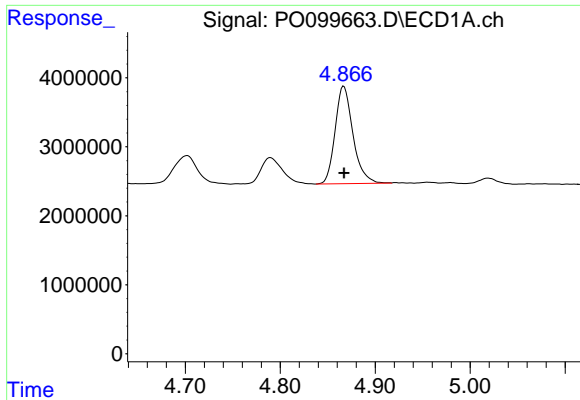
#9 AR-1221-2

R.T.: 4.790 min  
 Delta R.T.: 0.000 min  
 Response: 5982528  
 Conc: 389.48 ng/ml



#9 AR-1221-2

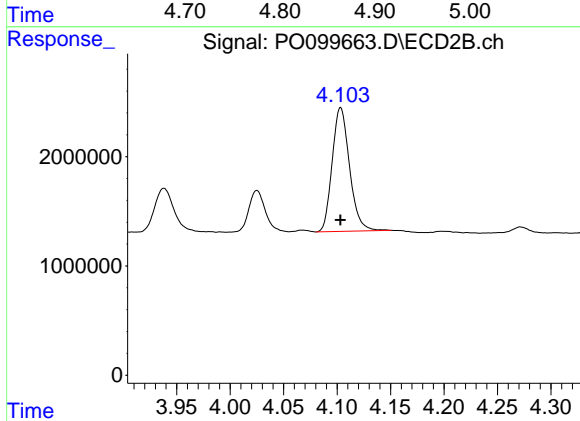
R.T.: 4.025 min  
 Delta R.T.: 0.000 min  
 Response: 4085907  
 Conc: 386.67 ng/ml



#10 AR-1221-3

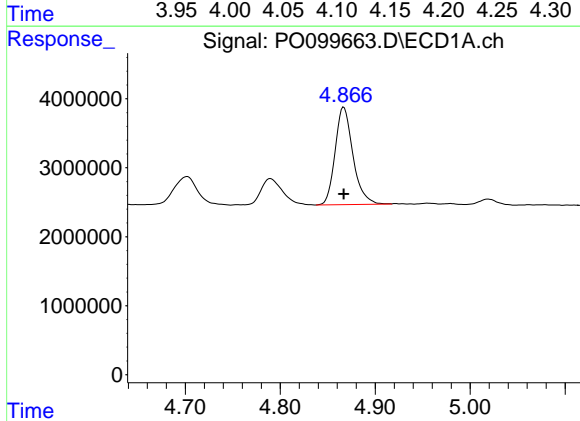
R.T.: 4.867 min  
 Delta R.T.: 0.000 min  
 Response: 18471071  
 Conc: 410.09 ng/ml

Instrument :  
 ECD\_O  
 ClientSampleId :



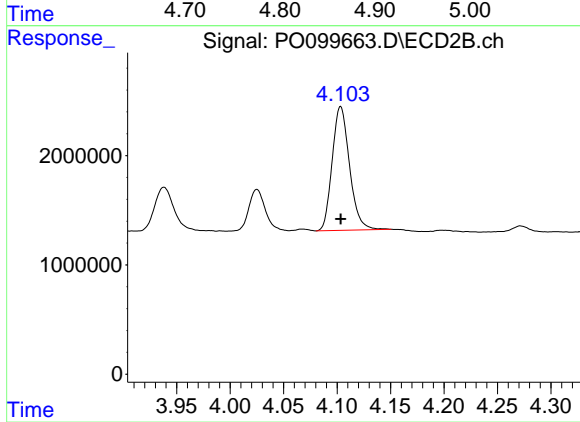
#10 AR-1221-3

R.T.: 4.103 min  
 Delta R.T.: 0.000 min  
 Response: 12813950  
 Conc: 420.61 ng/ml



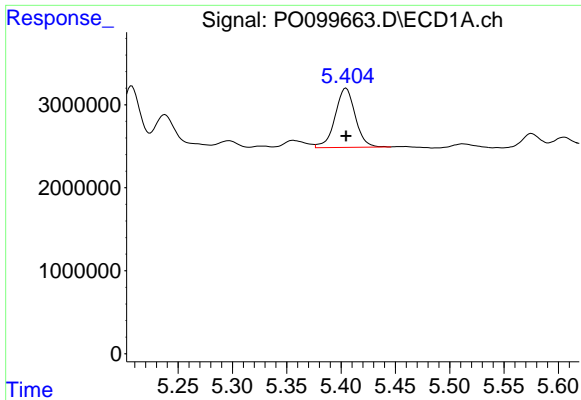
#11 AR-1232-1

R.T.: 4.867 min  
 Delta R.T.: 0.000 min  
 Response: 18471071  
 Conc: 500.00 ng/ml



#11 AR-1232-1

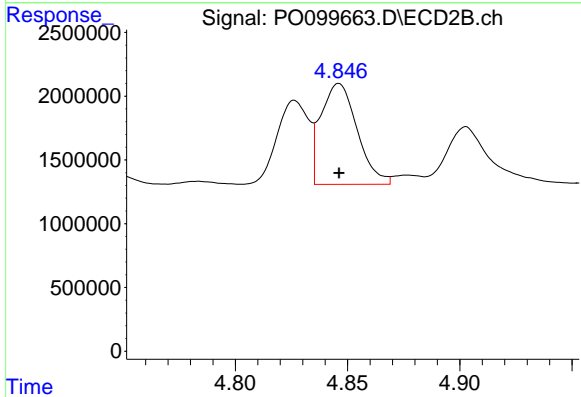
R.T.: 4.103 min  
 Delta R.T.: 0.000 min  
 Response: 12813950  
 Conc: 500.00 ng/ml



#12 AR-1232-2

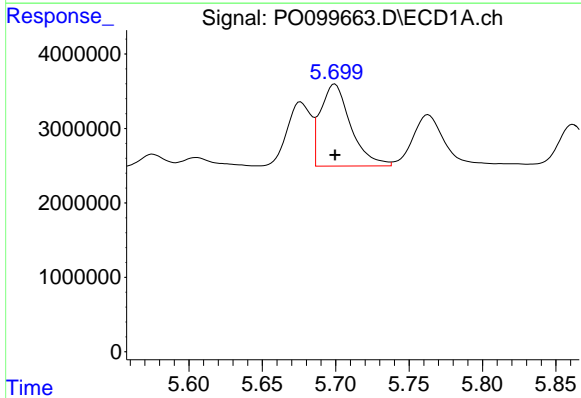
R.T.: 5.405 min  
 Delta R.T.: 0.000 min  
 Response: 9205724  
 Conc: 500.00 ng/ml

Instrument :  
 ECD\_O  
 ClientSampleId :



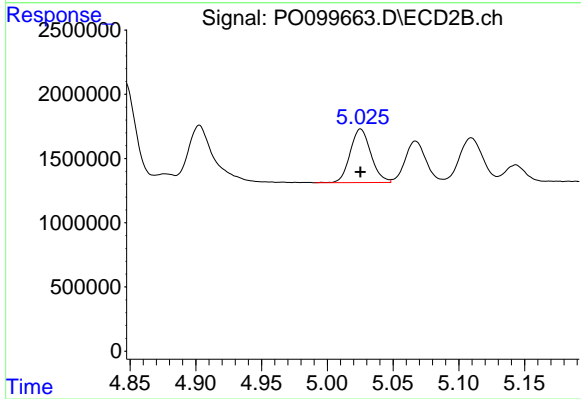
#12 AR-1232-2

R.T.: 4.846 min  
 Delta R.T.: 0.000 min  
 Response: 8907224  
 Conc: 500.00 ng/ml



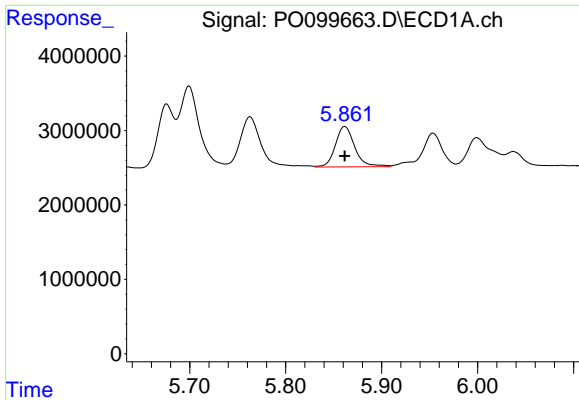
#13 AR-1232-3

R.T.: 5.699 min  
 Delta R.T.: 0.000 min  
 Response: 15781814  
 Conc: 500.00 ng/ml



#13 AR-1232-3

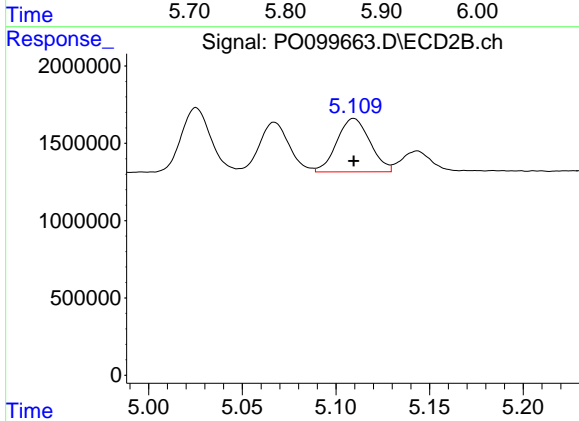
R.T.: 5.025 min  
 Delta R.T.: 0.000 min  
 Response: 4583354  
 Conc: 500.00 ng/ml



#14 AR-1232-4

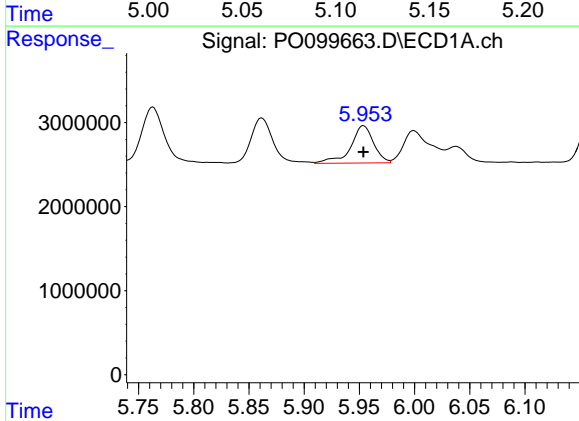
R.T.: 5.862 min  
 Delta R.T.: 0.000 min  
 Response: 7644122  
 Conc: 500.00 ng/ml

Instrument :  
 ECD\_O  
 ClientSampleId :



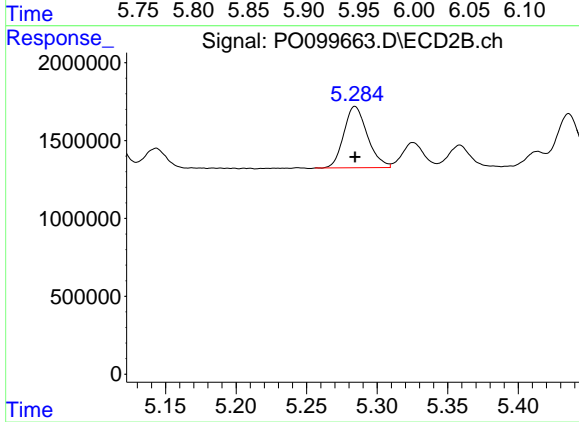
#14 AR-1232-4

R.T.: 5.109 min  
 Delta R.T.: 0.000 min  
 Response: 4262949  
 Conc: 500.00 ng/ml



#15 AR-1232-5

R.T.: 5.954 min  
 Delta R.T.: 0.000 min  
 Response: 6426904  
 Conc: 500.00 ng/ml



#15 AR-1232-5

R.T.: 5.284 min  
 Delta R.T.: 0.000 min  
 Response: 4587778  
 Conc: 500.00 ng/ml