

Data Path : Z:\pestpcbsrv\HPCHEM1\ECD\_0\Data\PO111324\  
 Data File : PO107953.D  
 Signal(s) : Signal #1: ECD1A.ch Signal #2: ECD2B.ch  
 Acq On : 13 Nov 2024 23:20  
 Operator : YP/AJ  
 Sample : AR1242CCC500  
 Misc :  
 ALS Vial : 4 Sample Multiplier: 1

**Instrument :**  
 ECD\_0  
**ClientSampleId :**  
 AR1242CCC500

Integration File signal 1: autoint1.e  
 Integration File signal 2: autoint2.e  
 Quant Time: Nov 14 04:34:37 2024  
 Quant Method : Z:\pestpcbsrv\HPCHEM1\ECD\_0\methods\PO111124.M  
 Quant Title : GC EXTRACTABLES  
 QLast Update : Tue Nov 12 01:21:40 2024  
 Response via : Initial Calibration  
 Integrator: ChemStation

Volume Inj. : 2 µl  
 Signal #1 Phase : ZB-MR1 Signal #2 Phase: ZB-MR2  
 Signal #1 Info : 30Mx0.32mmx 0.50µ Signal #2 Info : 30M x 0.32mm x 0.25µm

Compound	RT#1	RT#2	Resp#1	Resp#2	ng/ml	ng/ml
System Monitoring Compounds						
1) SA Tetrachlo...	4.372	3.639	449.9E6	176.7E6	50.125	52.626
2) SA Decachlor...	10.081	8.633	134.0E6	160.6E6	45.191	50.844
Target Compounds						
3) L1 AR-1016-1	5.525	4.719	111.6E6	45214500	416.737	426.112
4) L1 AR-1016-2	5.547	4.739	159.6E6	63827977	410.858	430.043
5) L1 AR-1016-3	5.610	4.915	101.2E6	34480408	407.055	431.915
6) L1 AR-1016-4	5.707	4.956	80951782	24834331	415.341	402.302
7) L1 AR-1016-5	6.003	5.169	77510769	34789358	418.058	416.839
8) L2 AR-1221-1	4.568	3.849	14403382	4598792	124.059	120.895
9) L2 AR-1221-2	4.658	3.936	21228389	7616419	254.538	255.790
10) L2 AR-1221-3	4.732	4.011	68787225	25264600	283.055	281.228
11) L3 AR-1232-1	4.732	4.011	68787225	25264600	353.182	357.059
12) L3 AR-1232-2	5.259	4.739	86492264	63827977	864.266	952.215
13) L3 AR-1232-3	5.547	4.915	159.6E6	34480408	898.274	969.039
14) L3 AR-1232-4	5.707	4.998	80951782	32807192	912.829	1067.233
15) L3 AR-1232-5	5.800	5.169	70488128	34789358	1023.571	1022.598
16) L4 AR-1242-1	5.525	4.719	111.6E6	45214500	477.037	500.113
17) L4 AR-1242-2	5.547	4.739	159.6E6	63827977	472.006	503.793
18) L4 AR-1242-3	5.610	4.915	101.2E6	34480408	467.216	505.186
19) L4 AR-1242-4	5.707	4.998	80951782	32807192	473.709	505.651
20) L4 AR-1242-5	6.444	5.520	81071750	41588852	486.194	504.556
21) L5 AR-1248-1	5.525	4.719	111.6E6	45214500	620.691	680.148
22) L5 AR-1248-2	5.800	4.956	70488128	24834331	283.060	271.251
23) L5 AR-1248-3	6.003	4.998	77510769	32807192	294.612	339.853
24) L5 AR-1248-4	6.405	5.169	75330537	34789358	267.905	299.048
25) L5 AR-1248-5	6.444	5.561	81071750	35840829	283.990	312.540
26) L6 AR-1254-1	6.378	5.520	53492651	41588852	189.327	246.376 #
27) L6 AR-1254-2	6.602	5.668	64867940	10986059	155.677	73.041 #
28) L6 AR-1254-3	6.966	6.070	26142051	14264838	66.970	57.606
29) L6 AR-1254-4	7.252	6.297	21450385	8065751	76.090	61.968
30) L6 AR-1254-5	7.673	6.716	5708741	4071911	21.359	19.304
31) L7 AR-1260-1	7.136	6.215	5558957	5448084	19.355	35.360 #
32) L7 AR-1260-2	7.392	6.387	4328714	2033254	14.631	10.835 #
33) L7 AR-1260-3	7.767	6.540	232338	2109498	1.011	12.015 #
34) L7 AR-1260-4	8.002	7.012	215568	505205	0.907	3.372 #
35) L7 AR-1260-5	8.293	7.272	559997	159945	1.450	0.439 #
36) L8 AR-1262-1	7.767	6.786	232338	726700	0.696	3.271 #
37) L8 AR-1262-2	8.293	7.272	559997	159945	1.239	0.387 #
38) L8 AR-1262-3	8.609	7.528	317887	1052672	1.095	6.534 #
39) L8 AR-1262-4	8.708	7.599	348791	789795	1.546	2.571 #
40) L8 AR-1262-5	9.335	8.091	107015	909299	0.735	6.393 #
41) L9 AR-1268-1	8.609	7.528	317887	1052672	0.646	2.228 #

Data Path : Z:\pestpcbsrv\HPCHEM1\ECD\_0\Data\PO111324\  
 Data File : PO107953.D  
 Signal(s) : Signal #1: ECD1A.ch Signal #2: ECD2B.ch  
 Acq On : 13 Nov 2024 23:20  
 Operator : YP/AJ  
 Sample : AR1242CCC500  
 Misc :  
 ALS Vial : 4 Sample Multiplier: 1

Instrument :  
 ECD\_0  
 ClientSampleId :  
 AR1242CCC500

Integration File signal 1: autoint1.e  
 Integration File signal 2: autoint2.e  
 Quant Time: Nov 14 04:34:37 2024  
 Quant Method : Z:\pestpcbsrv\HPCHEM1\ECD\_0\methods\PO111124.M  
 Quant Title : GC EXTRACTABLES  
 QLast Update : Tue Nov 12 01:21:40 2024  
 Response via : Initial Calibration  
 Integrator: ChemStation

Volume Inj. : 2 µl  
 Signal #1 Phase : ZB-MR1 Signal #2 Phase: ZB-MR2  
 Signal #1 Info : 30Mx0.32mmx 0.50µ Signal #2 Info : 30M x 0.32mm x 0.25µm

	Compound	RT#1	RT#2	Resp#1	Resp#2	ng/ml	ng/ml
42)	L9 AR-1268-2	8.708	7.599	348791	789795	0.785	1.807 #
43)	L9 AR-1268-3	8.927	7.803	445487	571367	1.243	1.563 #
44)	L9 AR-1268-4	9.335	8.091	107015	909299	0.672	5.876 #
45)	L9 AR-1268-5	9.745	8.382	1784489	1944795	1.727	1.588

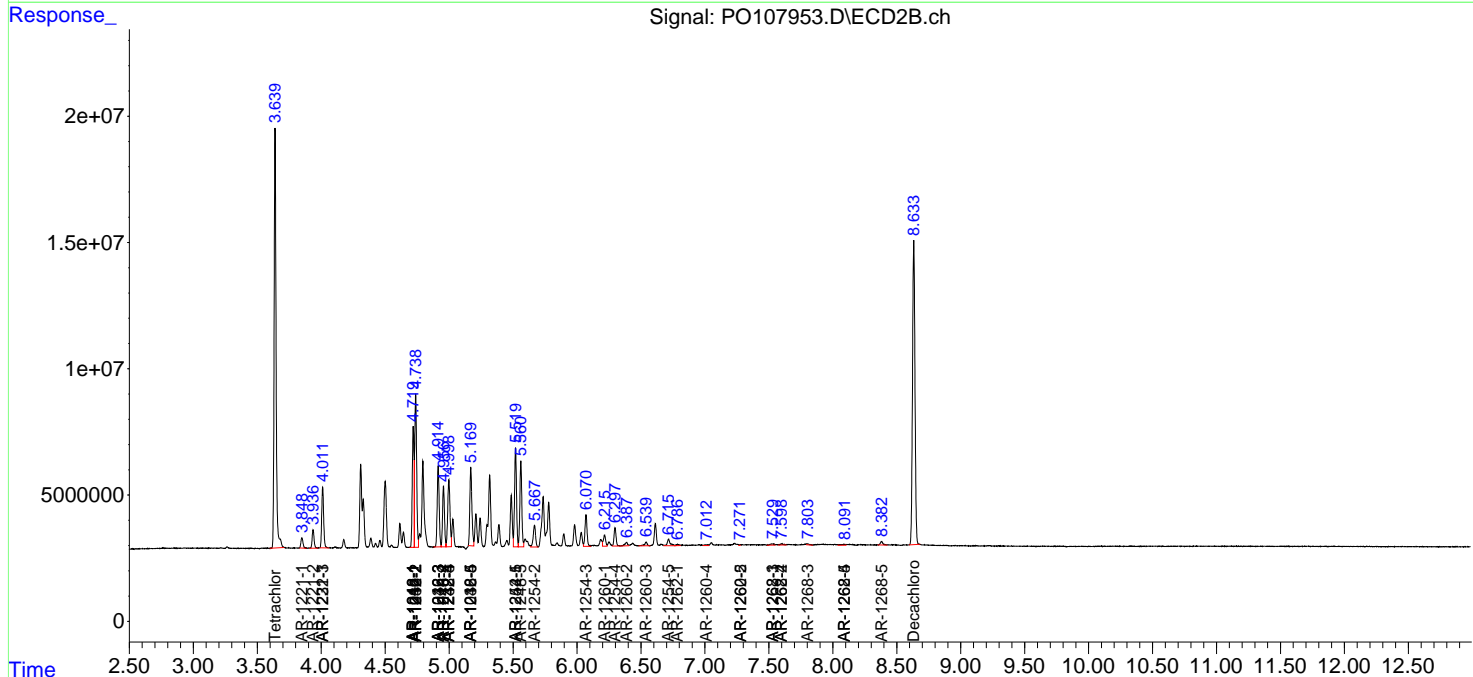
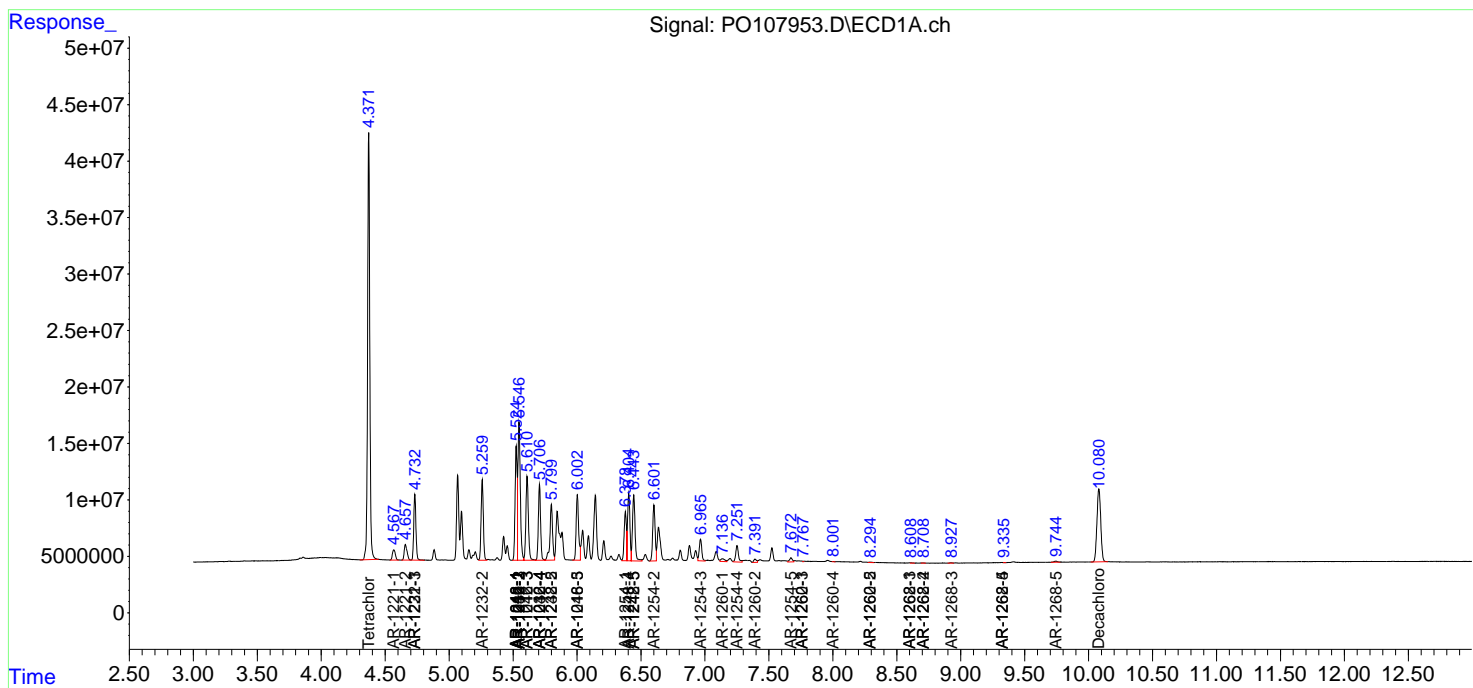
(f)=RT Delta > 1/2 Window (#)=Amounts differ by > 25% (m)=manual int.

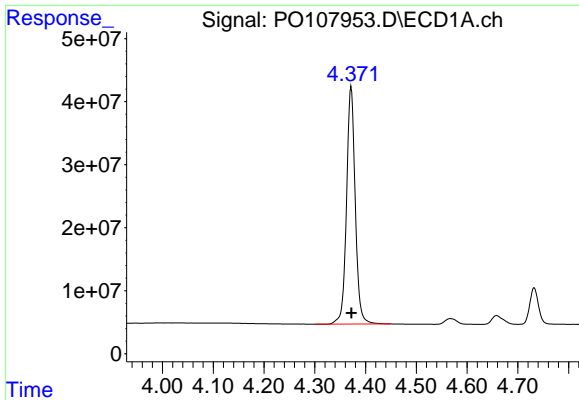
Data Path : Z:\pestpcbsrv\HPCHEM1\ECD\_O\Data\PO111324\  
 Data File : PO107953.D  
 Signal(s) : Signal #1: ECD1A.ch Signal #2: ECD2B.ch  
 Acq On : 13 Nov 2024 23:20  
 Operator : YP/AJ  
 Sample : AR1242CCC500  
 Misc :  
 ALS Vial : 4 Sample Multiplier: 1

Instrument :  
 ECD\_O  
 ClientSampleId :  
 AR1242CCC500

Integration File signal 1: autoint1.e  
 Integration File signal 2: autoint2.e  
 Quant Time: Nov 14 04:34:37 2024  
 Quant Method : Z:\pestpcbsrv\HPCHEM1\ECD\_O\methods\PO111124.M  
 Quant Title : GC EXTRACTABLES  
 QLast Update : Tue Nov 12 01:21:40 2024  
 Response via : Initial Calibration  
 Integrator: ChemStation

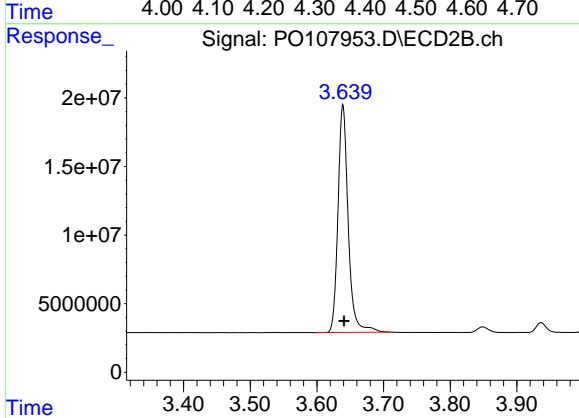
Volume Inj. : 2 µl  
 Signal #1 Phase : ZB-MR1 Signal #2 Phase: ZB-MR2  
 Signal #1 Info : 30Mx0.32mmx 0.50µ Signal #2 Info : 30M x 0.32mm x 0.25µm



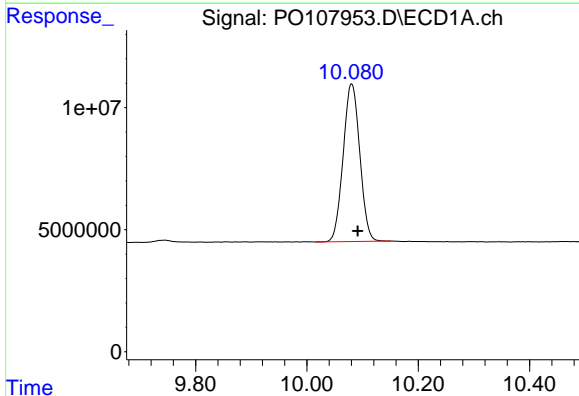


#1 Tetrachloro-m-xylene  
 R.T.: 4.372 min  
 Delta R.T.: 0.000 min  
 Response: 449936218  
 Conc: 50.12 ng/ml

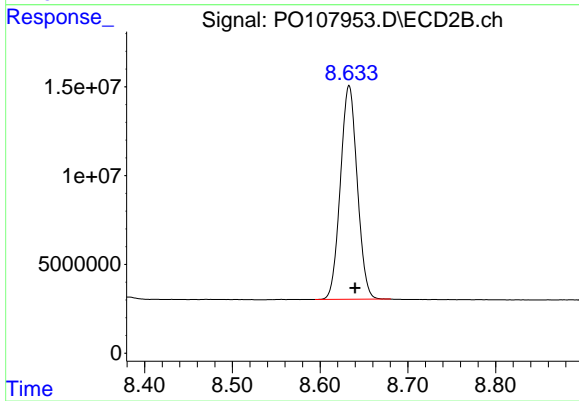
Instrument :  
 ECD\_O  
 ClientSampleId :  
 AR1242CCC500



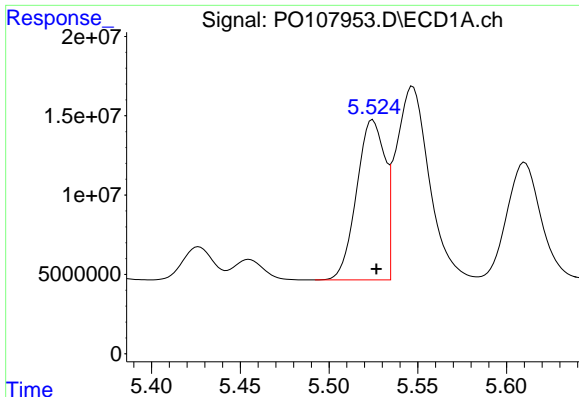
#1 Tetrachloro-m-xylene  
 R.T.: 3.639 min  
 Delta R.T.: -0.002 min  
 Response: 176749468  
 Conc: 52.63 ng/ml



#2 Decachlorobiphenyl  
 R.T.: 10.081 min  
 Delta R.T.: -0.011 min  
 Response: 133962627  
 Conc: 45.19 ng/ml



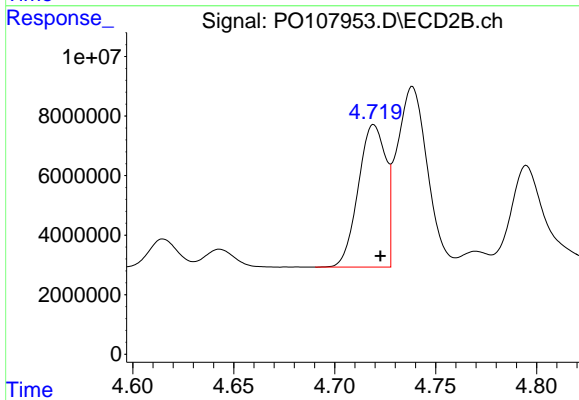
#2 Decachlorobiphenyl  
 R.T.: 8.633 min  
 Delta R.T.: -0.007 min  
 Response: 160624194  
 Conc: 50.84 ng/ml



#3 AR-1016-1

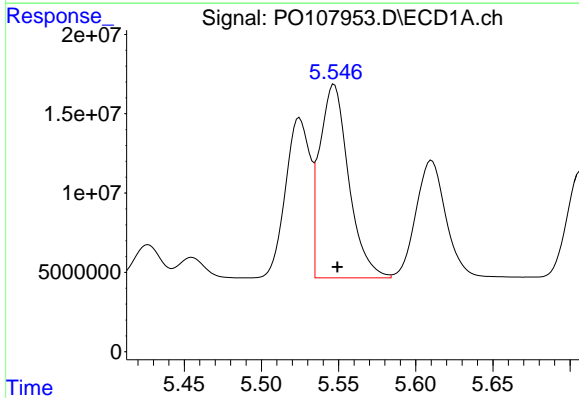
R.T.: 5.525 min  
Delta R.T.: -0.002 min  
Response: 111605936  
Conc: 416.74 ng/ml

Instrument :  
ECD\_O  
ClientSampleId :  
AR1242CCC500



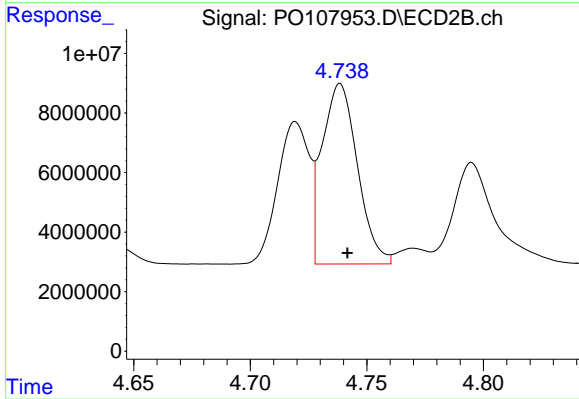
#3 AR-1016-1

R.T.: 4.719 min  
Delta R.T.: -0.003 min  
Response: 45214500  
Conc: 426.11 ng/ml



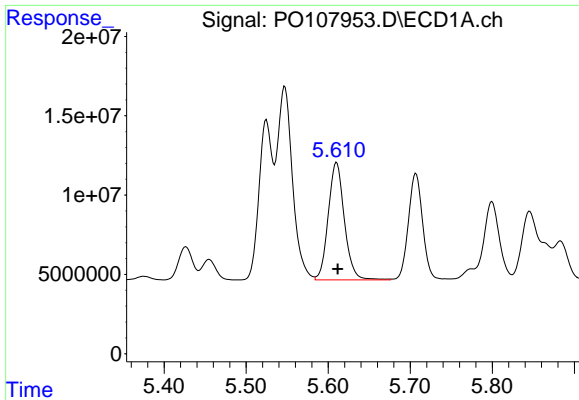
#4 AR-1016-2

R.T.: 5.547 min  
Delta R.T.: -0.002 min  
Response: 159574582  
Conc: 410.86 ng/ml



#4 AR-1016-2

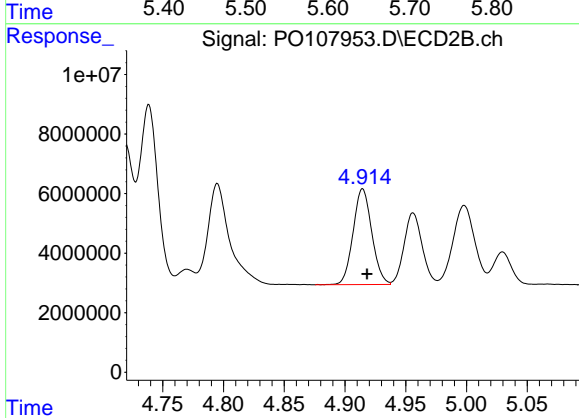
R.T.: 4.739 min  
Delta R.T.: -0.003 min  
Response: 63827977  
Conc: 430.04 ng/ml



#5 AR-1016-3

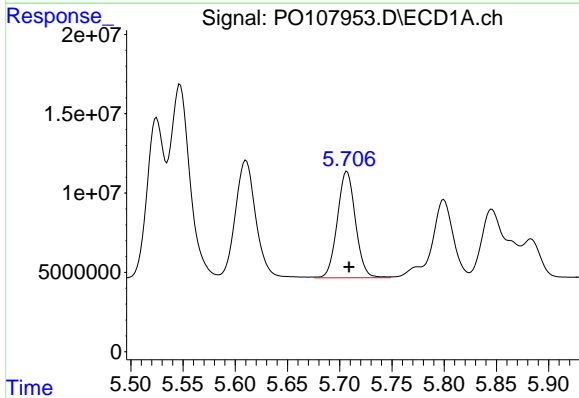
R.T.: 5.610 min  
 Delta R.T.: -0.001 min  
 Response: 101189718  
 Conc: 407.06 ng/ml

Instrument :  
 ECD\_O  
 ClientSampleId :  
 AR1242CCC500



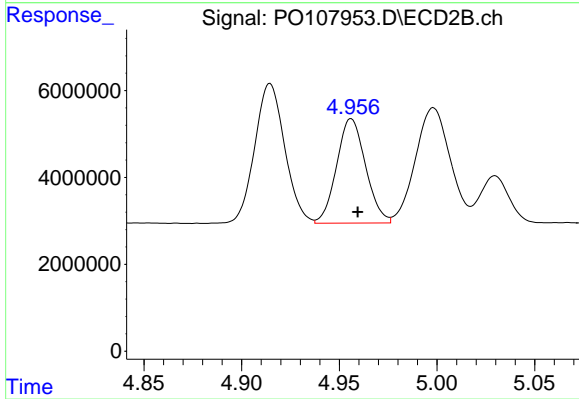
#5 AR-1016-3

R.T.: 4.915 min  
 Delta R.T.: -0.004 min  
 Response: 34480408  
 Conc: 431.92 ng/ml



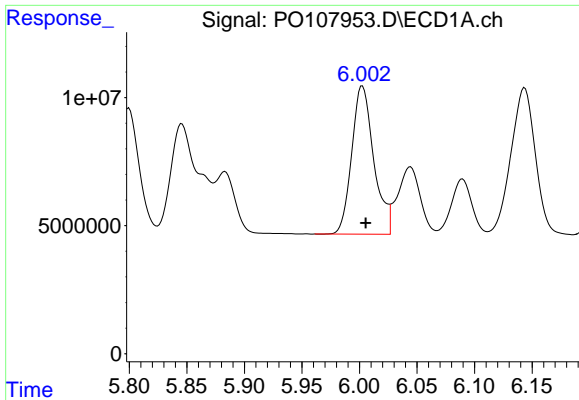
#6 AR-1016-4

R.T.: 5.707 min  
 Delta R.T.: -0.002 min  
 Response: 80951782  
 Conc: 415.34 ng/ml



#6 AR-1016-4

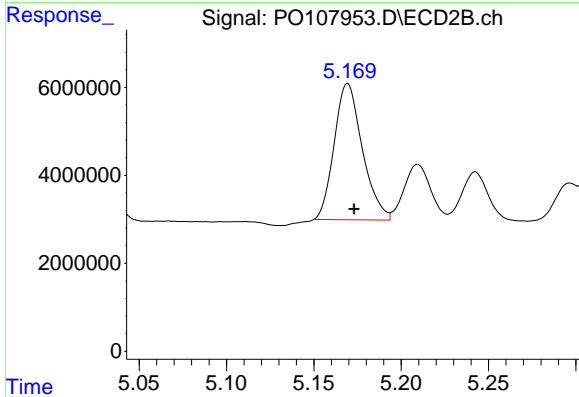
R.T.: 4.956 min  
 Delta R.T.: -0.003 min  
 Response: 24834331  
 Conc: 402.30 ng/ml



#7 AR-1016-5

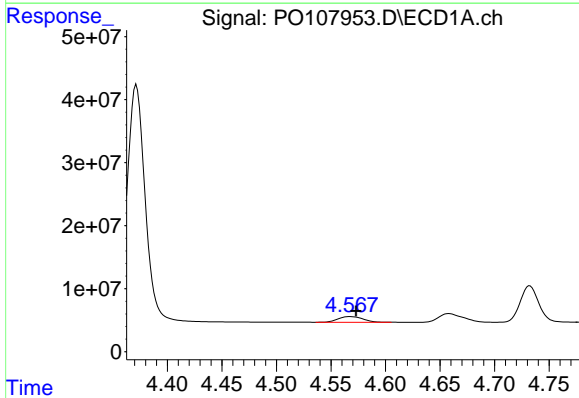
R.T.: 6.003 min  
 Delta R.T.: -0.003 min  
 Response: 77510769  
 Conc: 418.06 ng/ml

Instrument :  
 ECD\_O  
 ClientSampleId :  
 AR1242CCC500



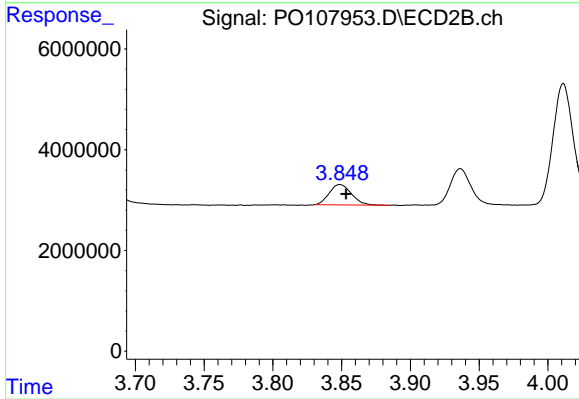
#7 AR-1016-5

R.T.: 5.169 min  
 Delta R.T.: -0.004 min  
 Response: 34789358  
 Conc: 416.84 ng/ml



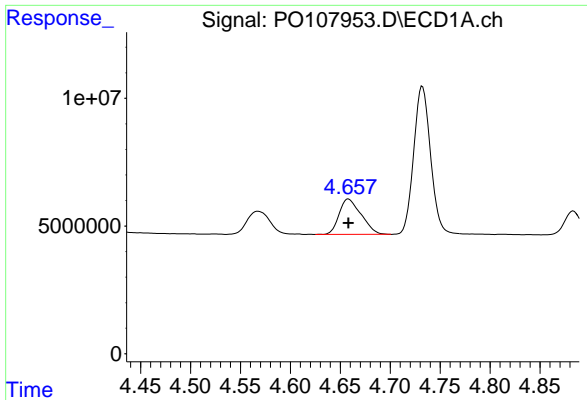
#8 AR-1221-1

R.T.: 4.568 min  
 Delta R.T.: -0.006 min  
 Response: 14403382  
 Conc: 124.06 ng/ml



#8 AR-1221-1

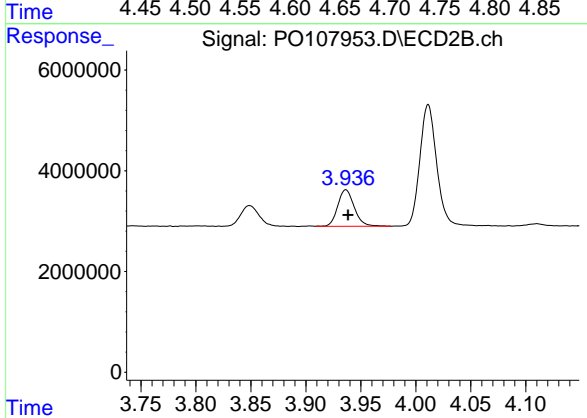
R.T.: 3.849 min  
 Delta R.T.: -0.004 min  
 Response: 4598792  
 Conc: 120.89 ng/ml



#9 AR-1221-2

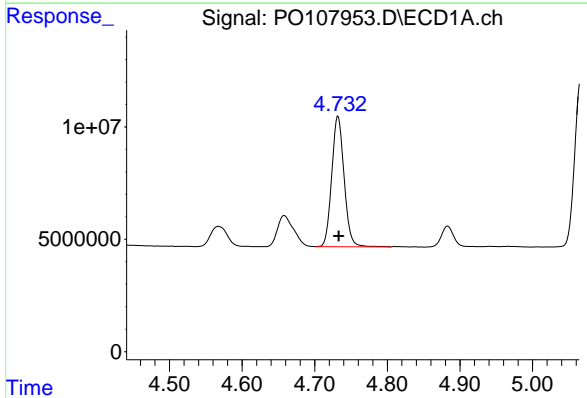
R.T.: 4.658 min  
 Delta R.T.: 0.000 min  
 Response: 21228389  
 Conc: 254.54 ng/ml

Instrument :  
 ECD\_O  
 ClientSampleId :  
 AR1242CCC500



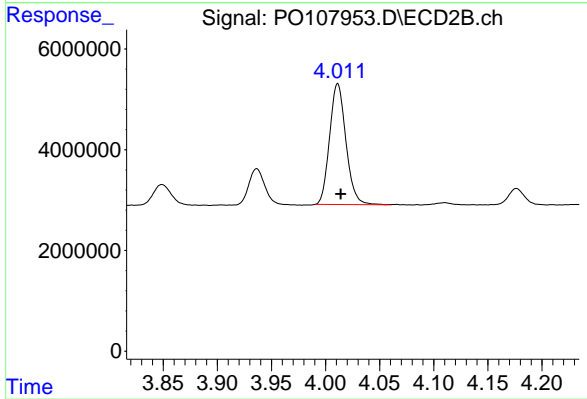
#9 AR-1221-2

R.T.: 3.936 min  
 Delta R.T.: -0.002 min  
 Response: 7616419  
 Conc: 255.79 ng/ml



#10 AR-1221-3

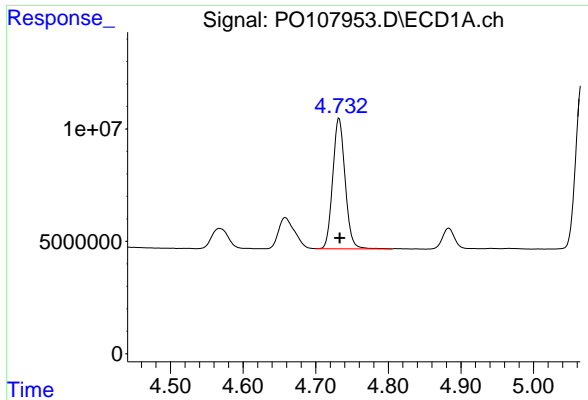
R.T.: 4.732 min  
 Delta R.T.: 0.000 min  
 Response: 68787225  
 Conc: 283.05 ng/ml



#10 AR-1221-3

R.T.: 4.011 min  
 Delta R.T.: -0.003 min  
 Response: 25264600  
 Conc: 281.23 ng/ml

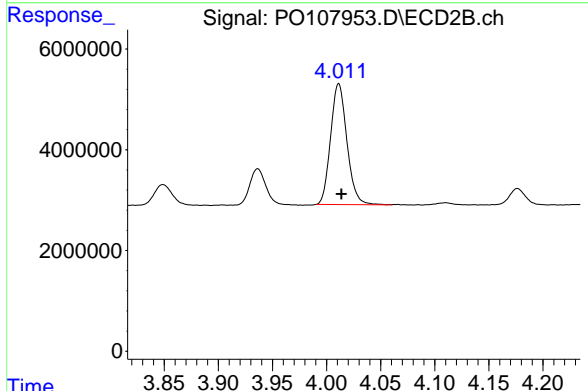




#11 AR-1232-1

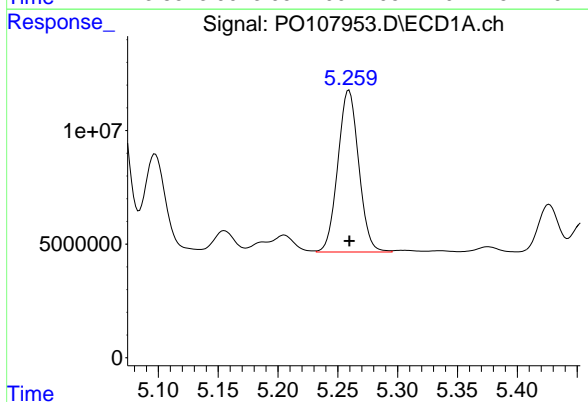
R.T.: 4.732 min  
 Delta R.T.: -0.001 min  
 Response: 68787225  
 Conc: 353.18 ng/ml

Instrument :  
 ECD\_O  
 ClientSampleId :  
 AR1242CCC500



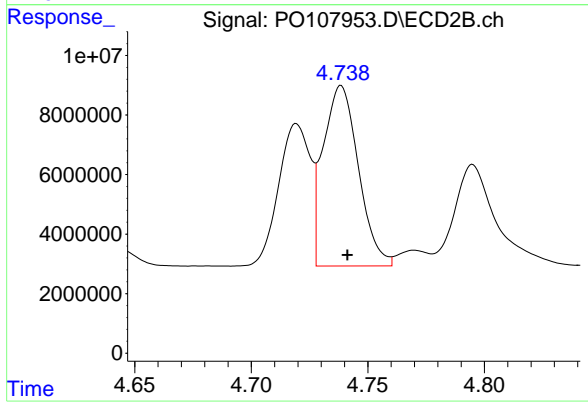
#11 AR-1232-1

R.T.: 4.011 min  
 Delta R.T.: -0.003 min  
 Response: 25264600  
 Conc: 357.06 ng/ml



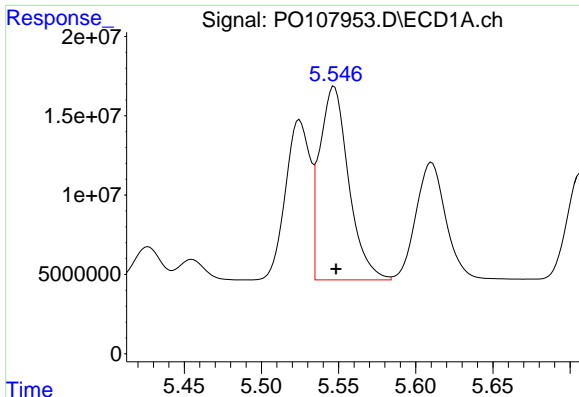
#12 AR-1232-2

R.T.: 5.259 min  
 Delta R.T.: 0.000 min  
 Response: 86492264  
 Conc: 864.27 ng/ml



#12 AR-1232-2

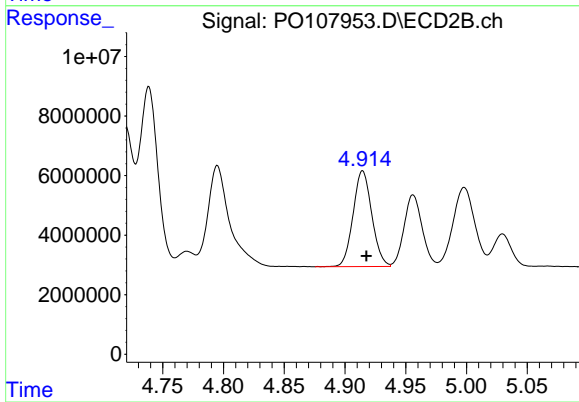
R.T.: 4.739 min  
 Delta R.T.: -0.003 min  
 Response: 63827977  
 Conc: 952.22 ng/ml



#13 AR-1232-3

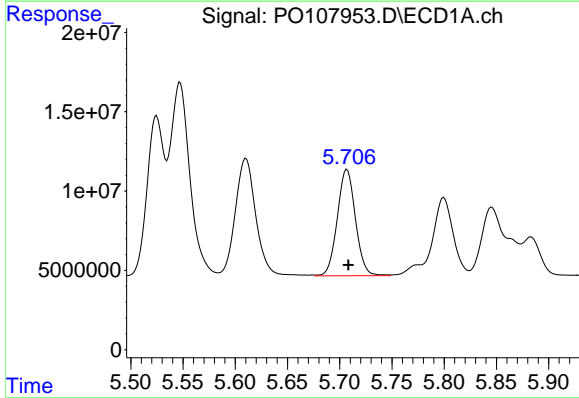
R.T.: 5.547 min  
 Delta R.T.: -0.001 min  
 Response: 159574582  
 Conc: 898.27 ng/ml

Instrument :  
 ECD\_O  
 ClientSampleId :  
 AR1242CCC500



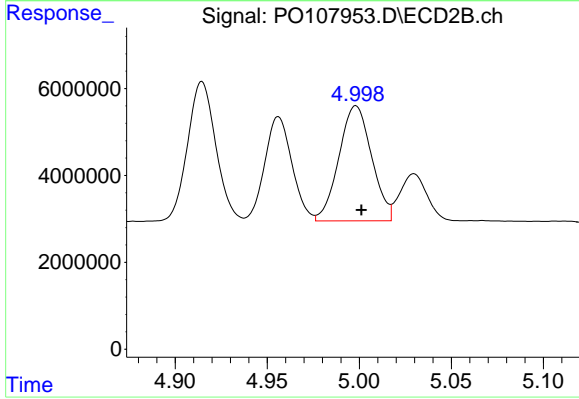
#13 AR-1232-3

R.T.: 4.915 min  
 Delta R.T.: -0.003 min  
 Response: 34480408  
 Conc: 969.04 ng/ml



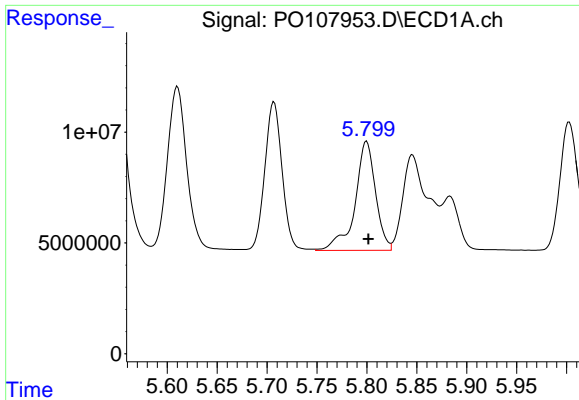
#14 AR-1232-4

R.T.: 5.707 min  
 Delta R.T.: -0.001 min  
 Response: 80951782  
 Conc: 912.83 ng/ml



#14 AR-1232-4

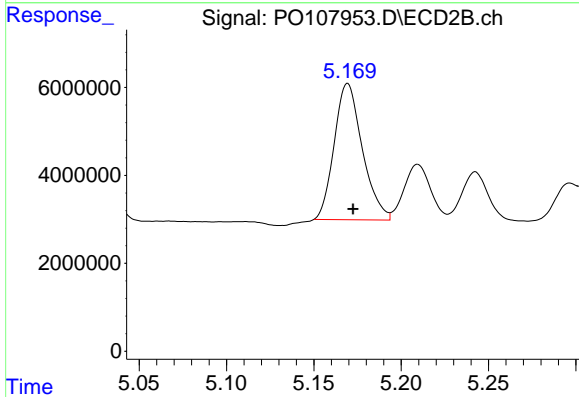
R.T.: 4.998 min  
 Delta R.T.: -0.003 min  
 Response: 32807192  
 Conc: 1067.23 ng/ml



#15 AR-1232-5

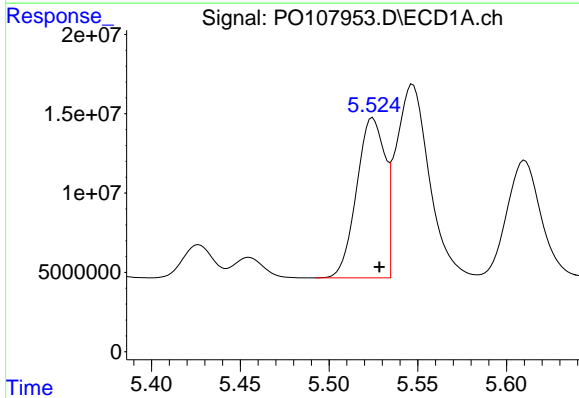
R.T.: 5.800 min  
 Delta R.T.: -0.002 min  
 Response: 70488128  
 Conc: 1023.57 ng/ml

Instrument :  
 ECD\_O  
 ClientSampleId :  
 AR1242CCC500



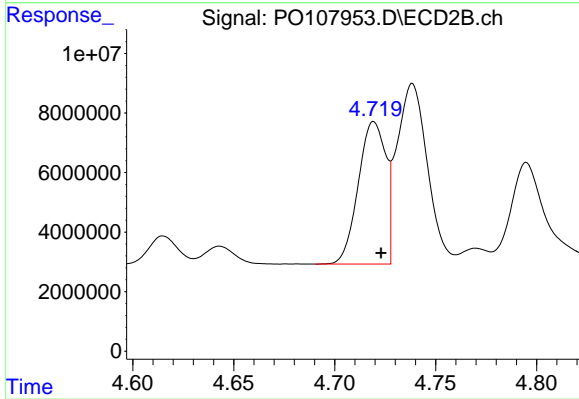
#15 AR-1232-5

R.T.: 5.169 min  
 Delta R.T.: -0.003 min  
 Response: 34789358  
 Conc: 1022.60 ng/ml



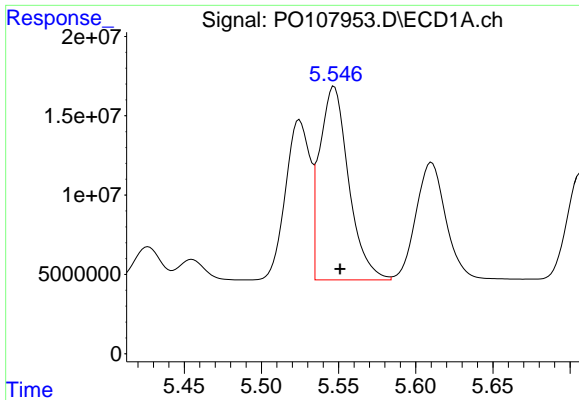
#16 AR-1242-1

R.T.: 5.525 min  
 Delta R.T.: -0.004 min  
 Response: 111605936  
 Conc: 477.04 ng/ml



#16 AR-1242-1

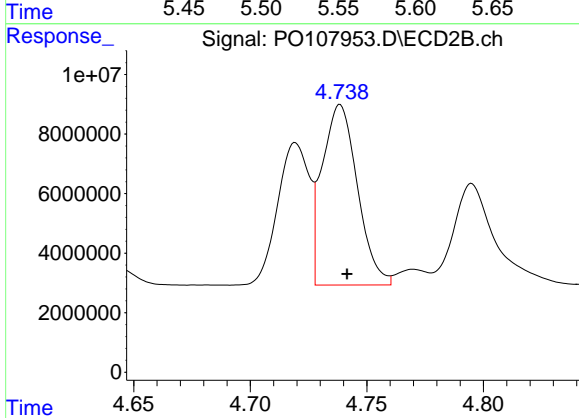
R.T.: 4.719 min  
 Delta R.T.: -0.004 min  
 Response: 45214500  
 Conc: 500.11 ng/ml



#17 AR-1242-2

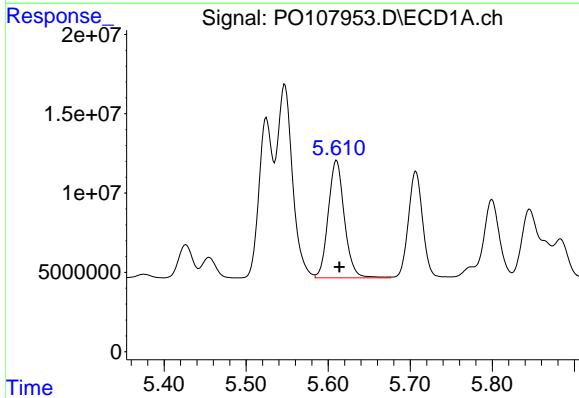
R.T.: 5.547 min  
Delta R.T.: -0.004 min  
Response: 159574582  
Conc: 472.01 ng/ml

Instrument :  
ECD\_O  
ClientSampleId :  
AR1242CCC500



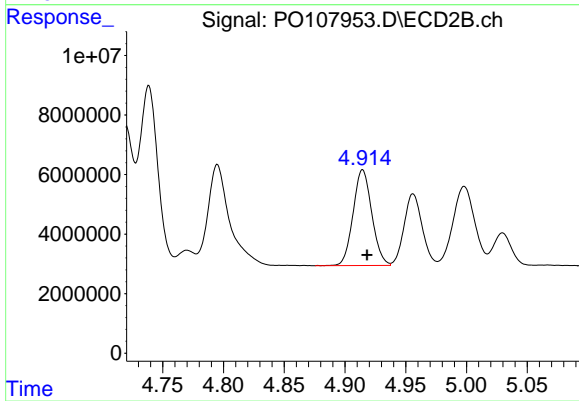
#17 AR-1242-2

R.T.: 4.739 min  
Delta R.T.: -0.003 min  
Response: 63827977  
Conc: 503.79 ng/ml



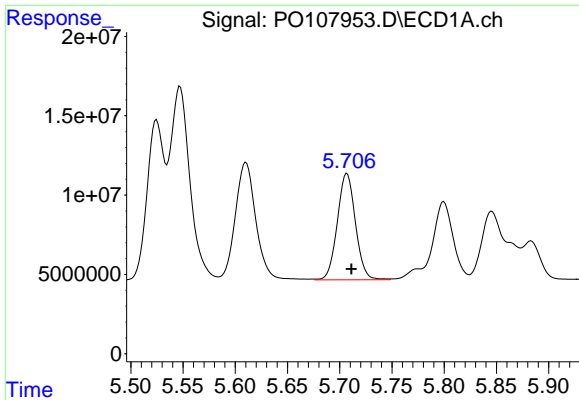
#18 AR-1242-3

R.T.: 5.610 min  
Delta R.T.: -0.003 min  
Response: 101189718  
Conc: 467.22 ng/ml



#18 AR-1242-3

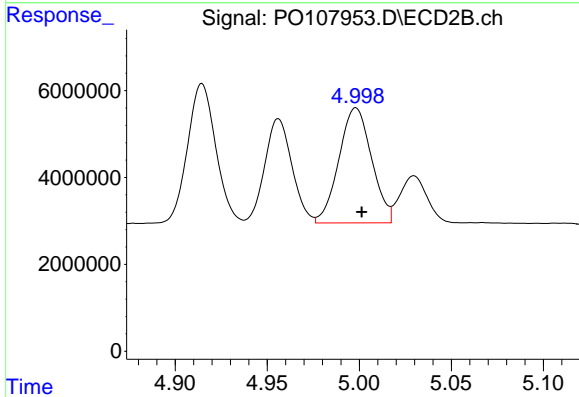
R.T.: 4.915 min  
Delta R.T.: -0.004 min  
Response: 34480408  
Conc: 505.19 ng/ml



#19 AR-1242-4

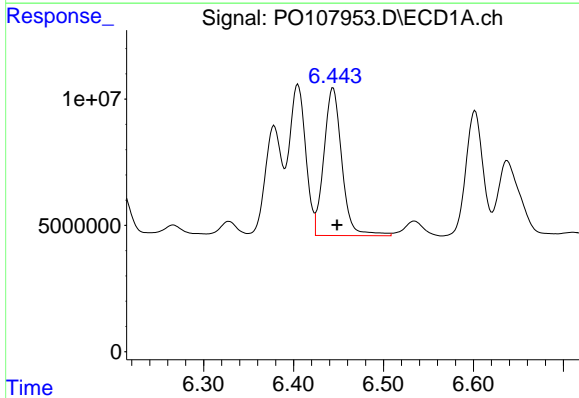
R.T.: 5.707 min  
 Delta R.T.: -0.004 min  
 Response: 80951782  
 Conc: 473.71 ng/ml

Instrument :  
 ECD\_O  
 ClientSampleId :  
 AR1242CCC500



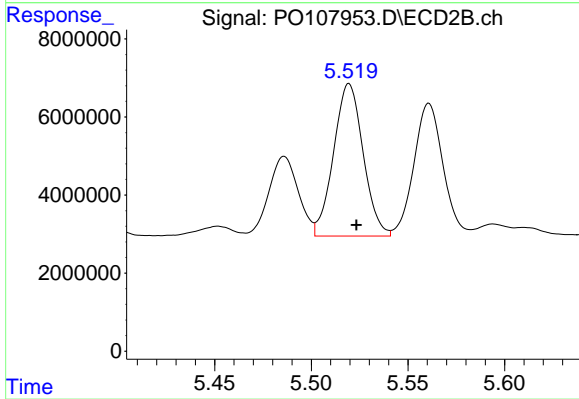
#19 AR-1242-4

R.T.: 4.998 min  
 Delta R.T.: -0.003 min  
 Response: 32807192  
 Conc: 505.65 ng/ml



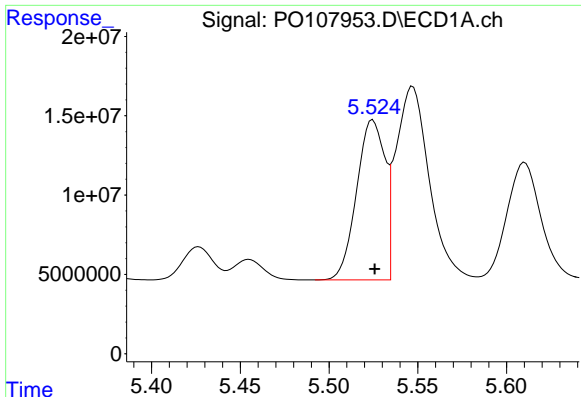
#20 AR-1242-5

R.T.: 6.444 min  
 Delta R.T.: -0.004 min  
 Response: 81071750  
 Conc: 486.19 ng/ml



#20 AR-1242-5

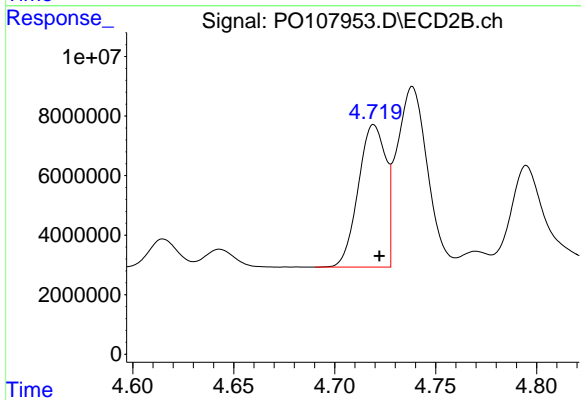
R.T.: 5.520 min  
 Delta R.T.: -0.004 min  
 Response: 41588852  
 Conc: 504.56 ng/ml



#21 AR-1248-1

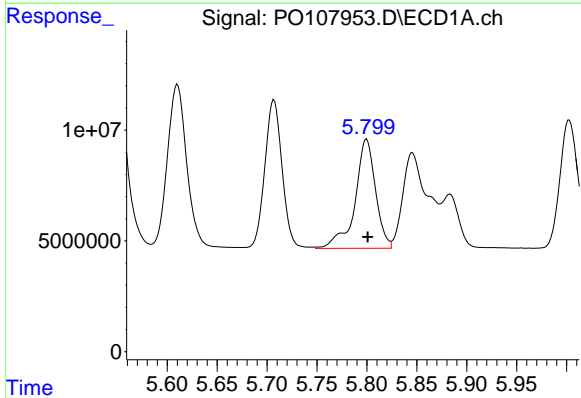
R.T.: 5.525 min  
 Delta R.T.: -0.001 min  
 Response: 111605936  
 Conc: 620.69 ng/ml

Instrument :  
 ECD\_O  
 ClientSampleId :  
 AR1242CCC500



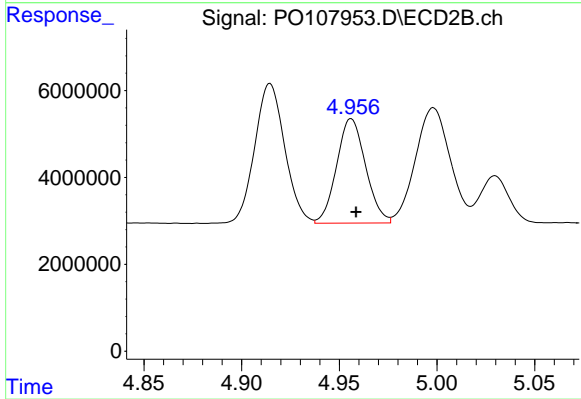
#21 AR-1248-1

R.T.: 4.719 min  
 Delta R.T.: -0.003 min  
 Response: 45214500  
 Conc: 680.15 ng/ml



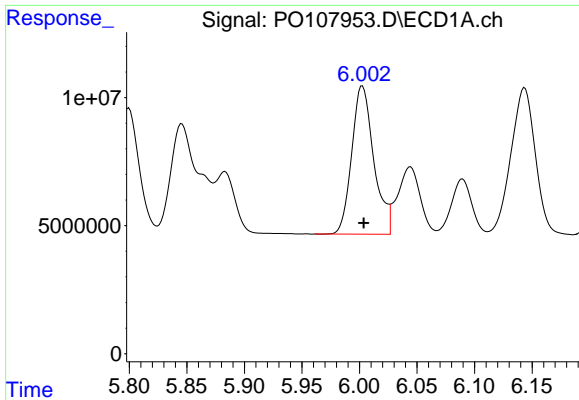
#22 AR-1248-2

R.T.: 5.800 min  
 Delta R.T.: 0.000 min  
 Response: 70488128  
 Conc: 283.06 ng/ml



#22 AR-1248-2

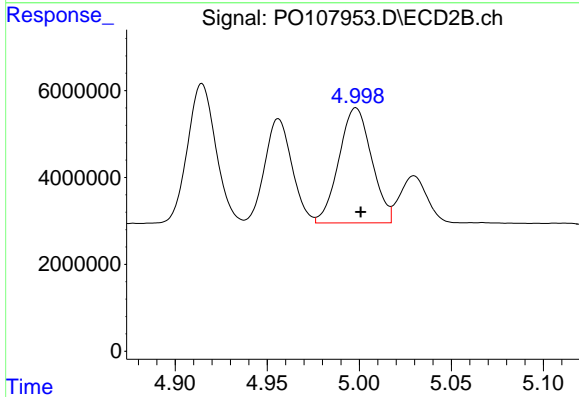
R.T.: 4.956 min  
 Delta R.T.: -0.002 min  
 Response: 24834331  
 Conc: 271.25 ng/ml



#23 AR-1248-3

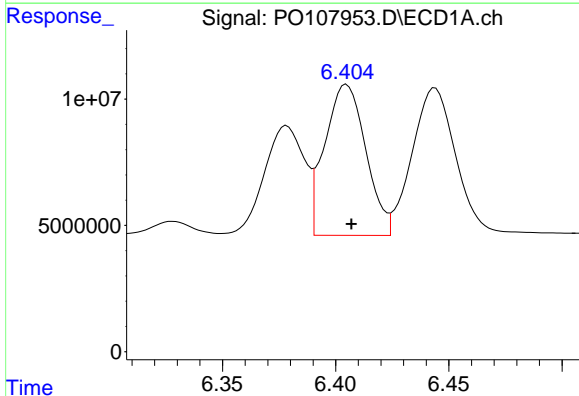
R.T.: 6.003 min  
 Delta R.T.: -0.001 min  
 Response: 77510769  
 Conc: 294.61 ng/ml

Instrument :  
 ECD\_O  
 ClientSampleId :  
 AR1242CCC500



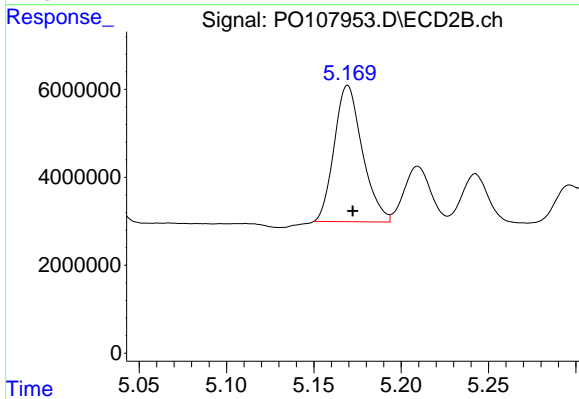
#23 AR-1248-3

R.T.: 4.998 min  
 Delta R.T.: -0.003 min  
 Response: 32807192  
 Conc: 339.85 ng/ml



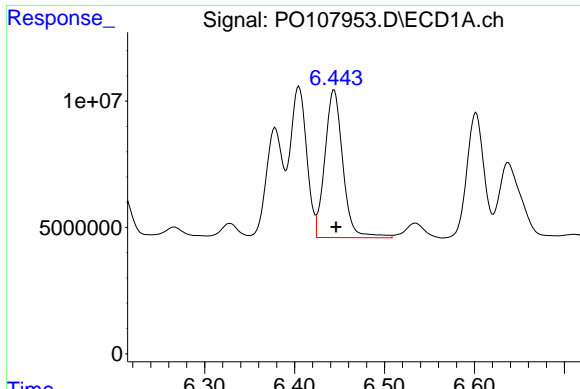
#24 AR-1248-4

R.T.: 6.405 min  
 Delta R.T.: -0.002 min  
 Response: 75330537  
 Conc: 267.90 ng/ml



#24 AR-1248-4

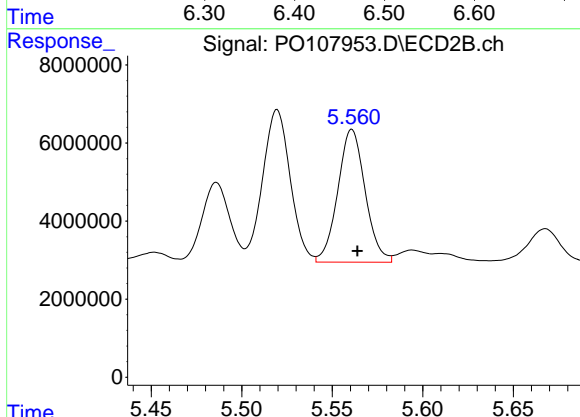
R.T.: 5.169 min  
 Delta R.T.: -0.003 min  
 Response: 34789358  
 Conc: 299.05 ng/ml



#25 AR-1248-5

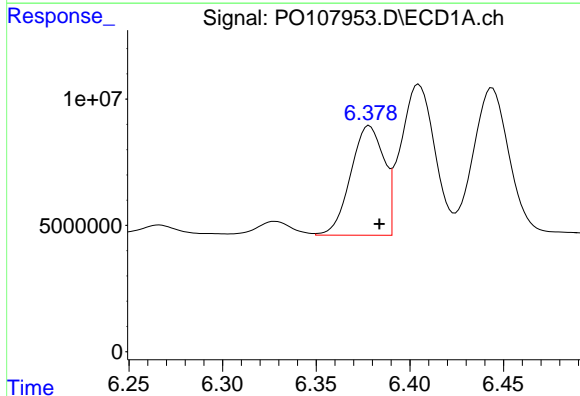
R.T.: 6.444 min  
 Delta R.T.: -0.002 min  
 Response: 81071750  
 Conc: 283.99 ng/ml

Instrument :  
 ECD\_O  
 ClientSampleId :  
 AR1242CCC500



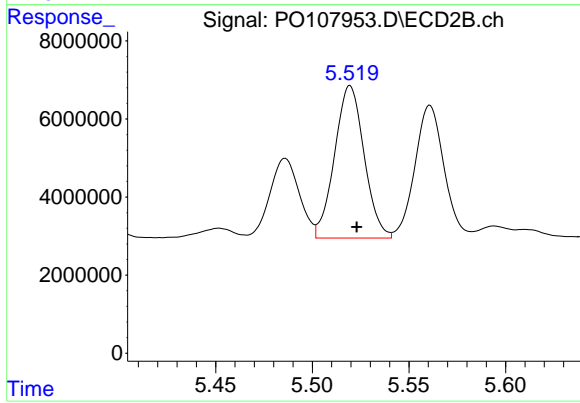
#25 AR-1248-5

R.T.: 5.561 min  
 Delta R.T.: -0.003 min  
 Response: 35840829  
 Conc: 312.54 ng/ml



#26 AR-1254-1

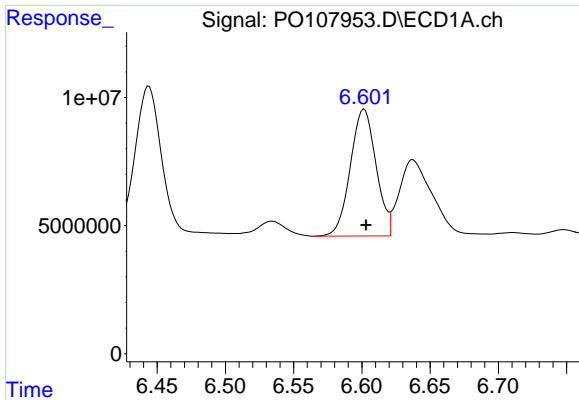
R.T.: 6.378 min  
 Delta R.T.: -0.005 min  
 Response: 53492651  
 Conc: 189.33 ng/ml



#26 AR-1254-1

R.T.: 5.520 min  
 Delta R.T.: -0.003 min  
 Response: 41588852  
 Conc: 246.38 ng/ml

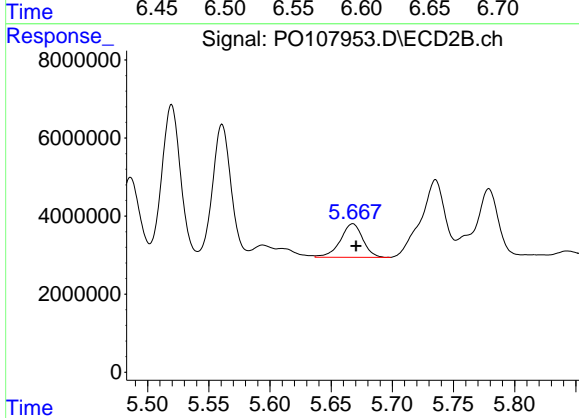




#27 AR-1254-2

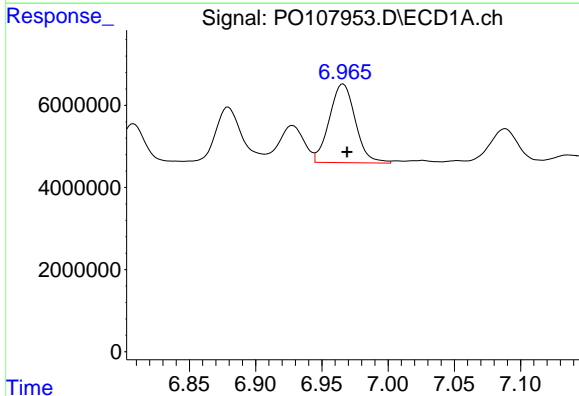
R.T.: 6.602 min  
 Delta R.T.: -0.001 min  
 Response: 64867940  
 Conc: 155.68 ng/ml

Instrument :  
 ECD\_O  
 ClientSampleId :  
 AR1242CCC500



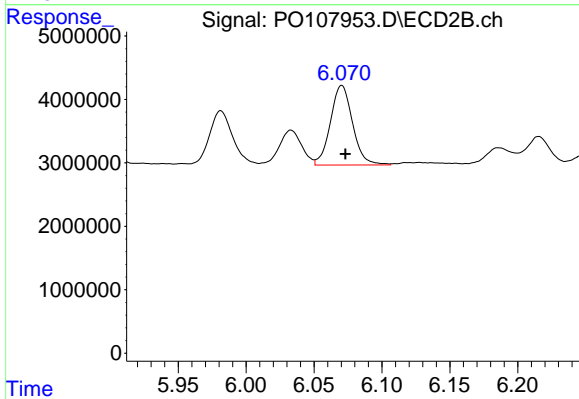
#27 AR-1254-2

R.T.: 5.668 min  
 Delta R.T.: -0.003 min  
 Response: 10986059  
 Conc: 73.04 ng/ml



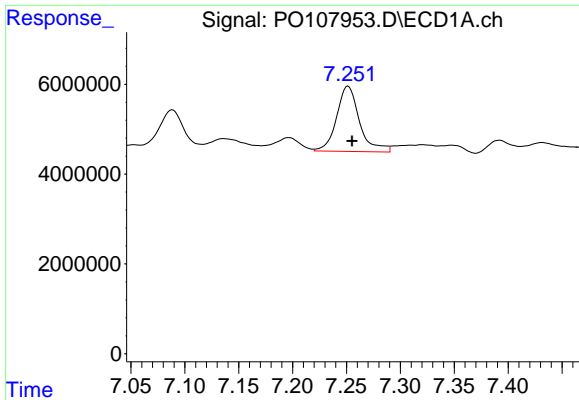
#28 AR-1254-3

R.T.: 6.966 min  
 Delta R.T.: -0.003 min  
 Response: 26142051  
 Conc: 66.97 ng/ml



#28 AR-1254-3

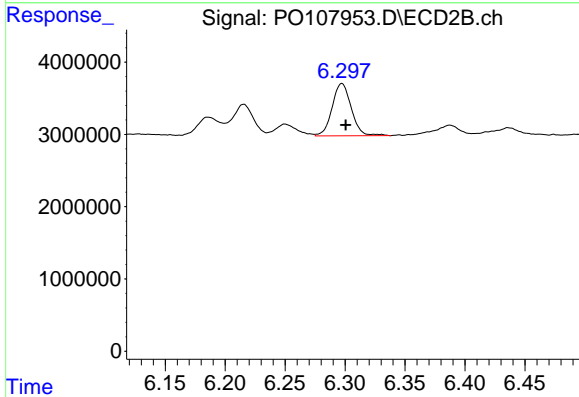
R.T.: 6.070 min  
 Delta R.T.: -0.003 min  
 Response: 14264838  
 Conc: 57.61 ng/ml



#29 AR-1254-4

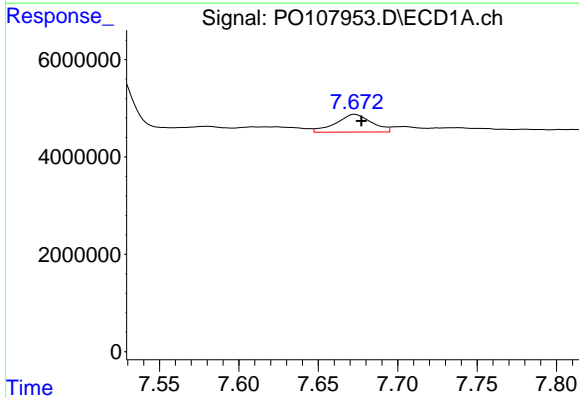
R.T.: 7.252 min  
 Delta R.T.: -0.004 min  
 Response: 21450385  
 Conc: 76.09 ng/ml

Instrument :  
 ECD\_O  
 ClientSampleId :  
 AR1242CCC500



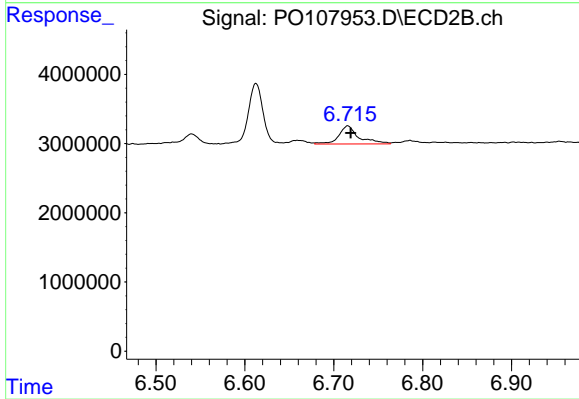
#29 AR-1254-4

R.T.: 6.297 min  
 Delta R.T.: -0.003 min  
 Response: 8065751  
 Conc: 61.97 ng/ml



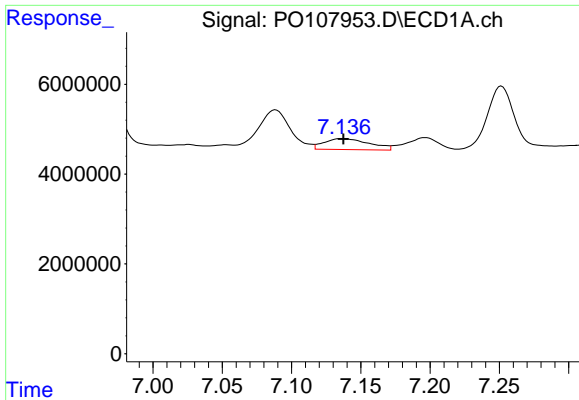
#30 AR-1254-5

R.T.: 7.673 min  
 Delta R.T.: -0.004 min  
 Response: 5708741  
 Conc: 21.36 ng/ml



#30 AR-1254-5

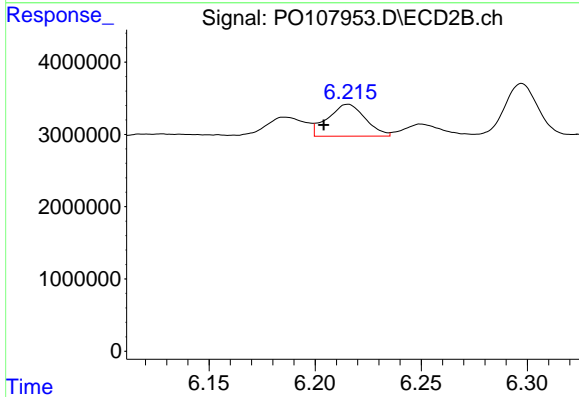
R.T.: 6.716 min  
 Delta R.T.: -0.003 min  
 Response: 4071911  
 Conc: 19.30 ng/ml



#31 AR-1260-1

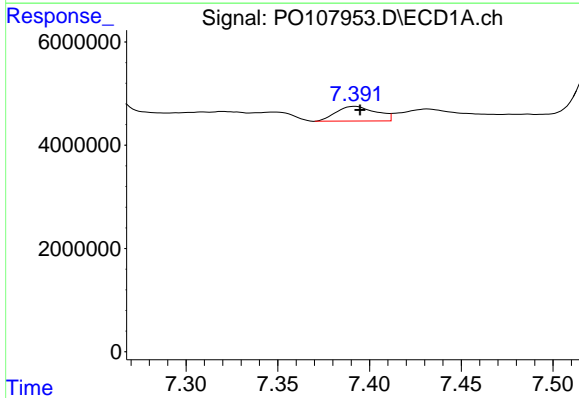
R.T.: 7.136 min  
 Delta R.T.: -0.001 min  
 Response: 5558957  
 Conc: 19.35 ng/ml

Instrument :  
 ECD\_O  
 ClientSampleId :  
 AR1242CCC500



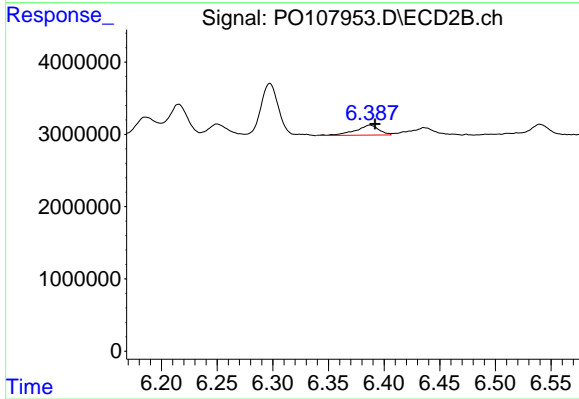
#31 AR-1260-1

R.T.: 6.215 min  
 Delta R.T.: 0.011 min  
 Response: 5448084  
 Conc: 35.36 ng/ml



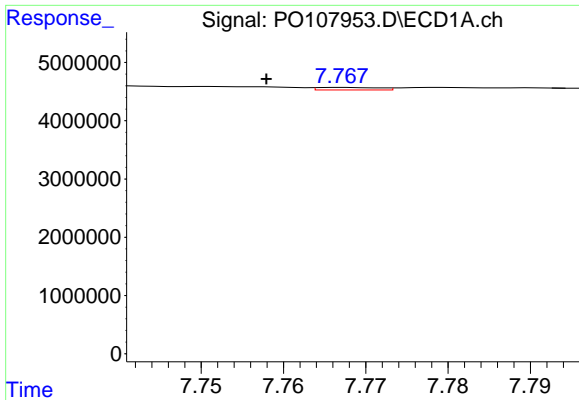
#32 AR-1260-2

R.T.: 7.392 min  
 Delta R.T.: -0.003 min  
 Response: 4328714  
 Conc: 14.63 ng/ml



#32 AR-1260-2

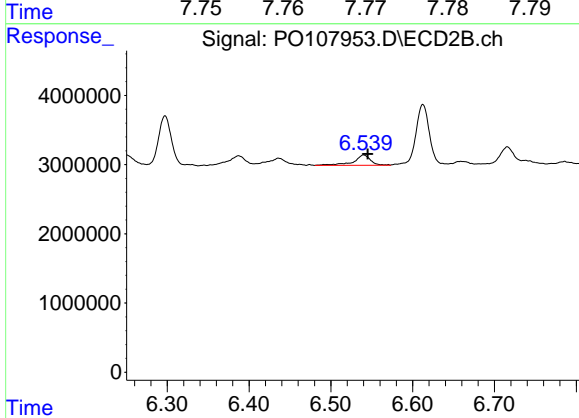
R.T.: 6.387 min  
 Delta R.T.: -0.004 min  
 Response: 2033254  
 Conc: 10.83 ng/ml



#33 AR-1260-3

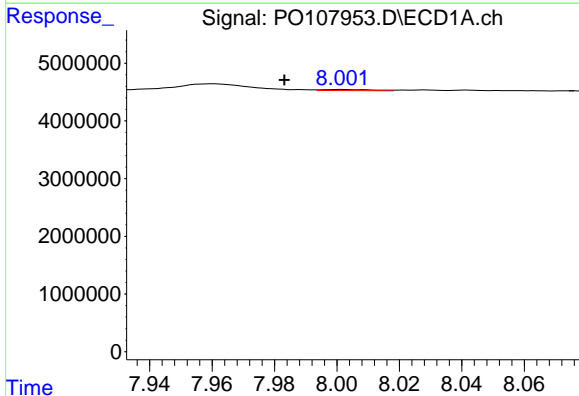
R.T.: 7.767 min  
 Delta R.T.: 0.009 min  
 Response: 232338  
 Conc: 1.01 ng/ml

Instrument :  
 ECD\_O  
 ClientSampleId :  
 AR1242CCC500



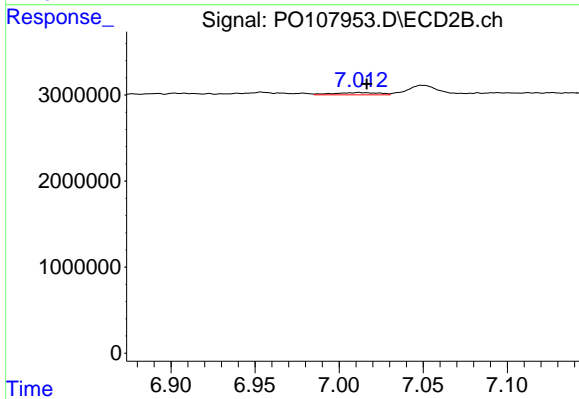
#33 AR-1260-3

R.T.: 6.540 min  
 Delta R.T.: -0.005 min  
 Response: 2109498  
 Conc: 12.01 ng/ml



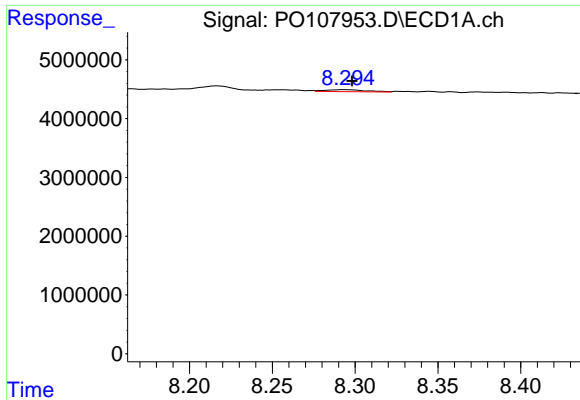
#34 AR-1260-4

R.T.: 8.002 min  
 Delta R.T.: 0.018 min  
 Response: 215568  
 Conc: 0.91 ng/ml



#34 AR-1260-4

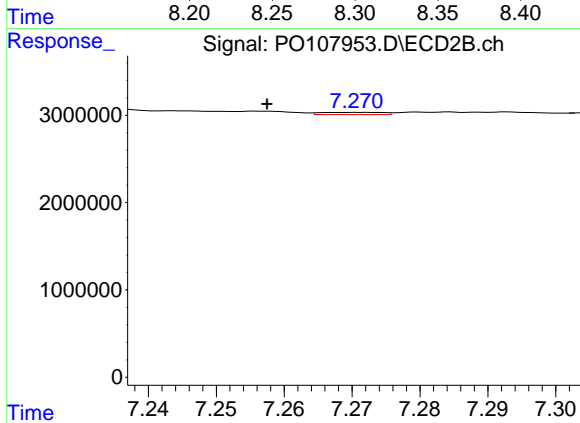
R.T.: 7.012 min  
 Delta R.T.: -0.005 min  
 Response: 505205  
 Conc: 3.37 ng/ml



#35 AR-1260-5

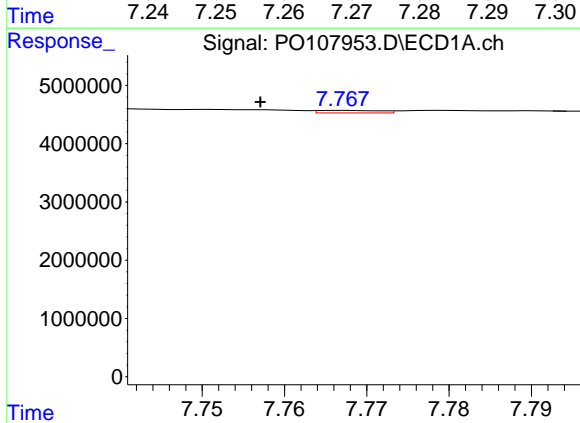
R.T.: 8.293 min  
 Delta R.T.: -0.005 min  
 Response: 559997  
 Conc: 1.45 ng/ml

Instrument :  
 ECD\_O  
 ClientSampleId :  
 AR1242CCC500



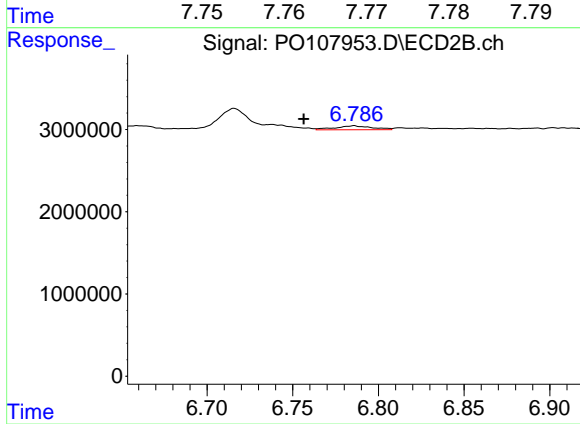
#35 AR-1260-5

R.T.: 7.272 min  
 Delta R.T.: 0.014 min  
 Response: 159945  
 Conc: 0.44 ng/ml



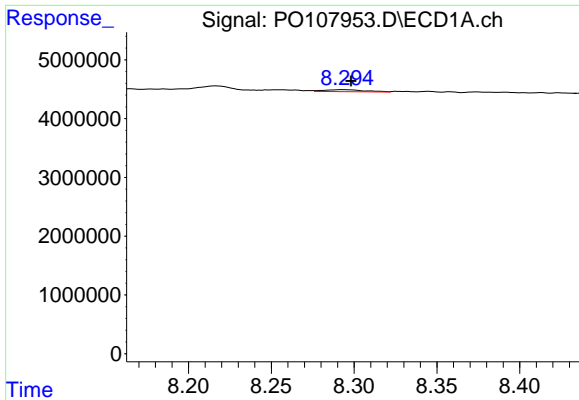
#36 AR-1262-1

R.T.: 7.767 min  
 Delta R.T.: 0.010 min  
 Response: 232338  
 Conc: 0.70 ng/ml



#36 AR-1262-1

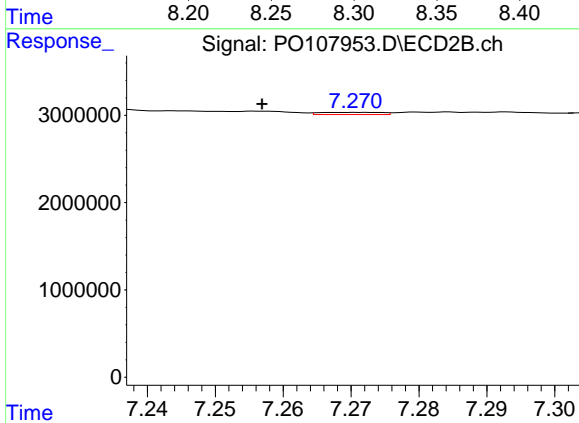
R.T.: 6.786 min  
 Delta R.T.: 0.029 min  
 Response: 726700  
 Conc: 3.27 ng/ml



#37 AR-1262-2

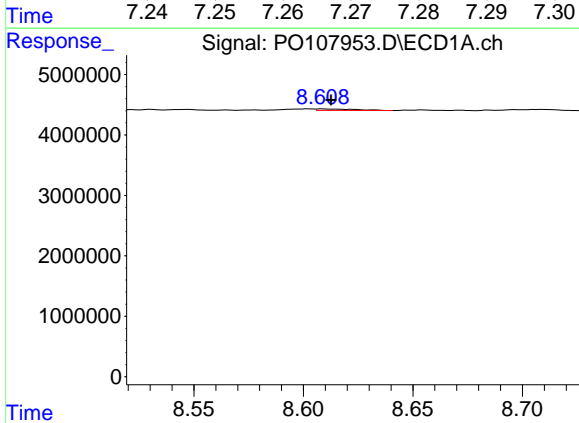
R.T.: 8.293 min  
 Delta R.T.: -0.005 min  
 Response: 559997  
 Conc: 1.24 ng/ml

Instrument :  
 ECD\_O  
 ClientSampleId :  
 AR1242CCC500



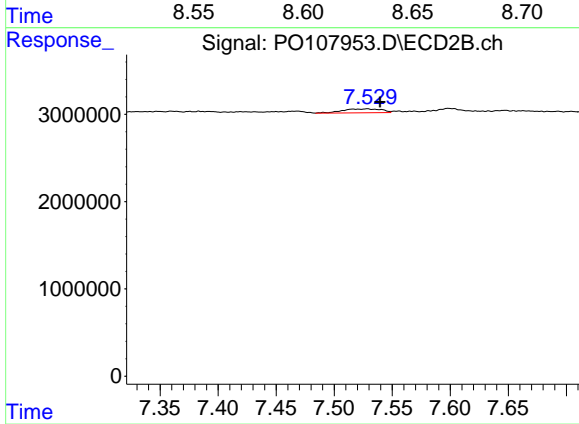
#37 AR-1262-2

R.T.: 7.272 min  
 Delta R.T.: 0.015 min  
 Response: 159945  
 Conc: 0.39 ng/ml



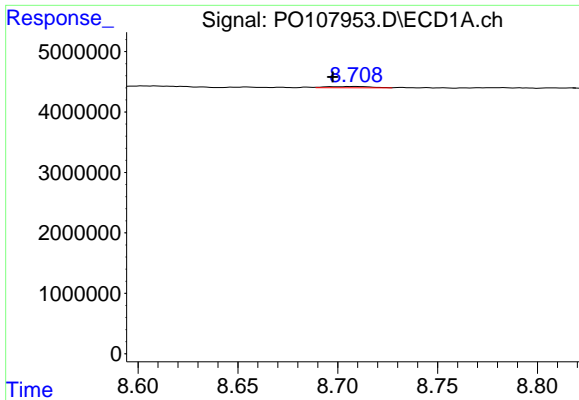
#38 AR-1262-3

R.T.: 8.609 min  
 Delta R.T.: -0.004 min  
 Response: 317887  
 Conc: 1.09 ng/ml



#38 AR-1262-3

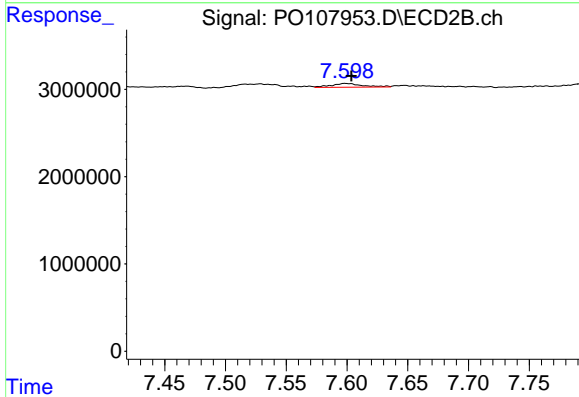
R.T.: 7.528 min  
 Delta R.T.: -0.011 min  
 Response: 1052672  
 Conc: 6.53 ng/ml



#39 AR-1262-4

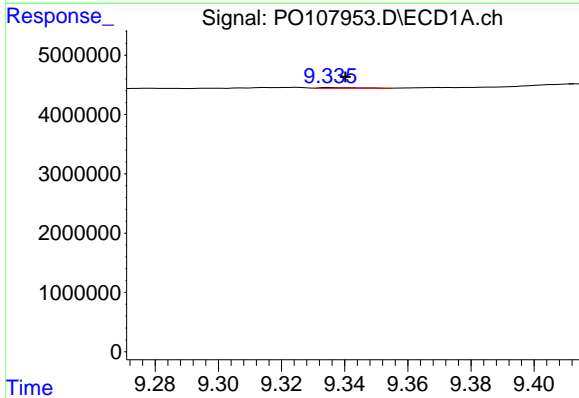
R.T.: 8.708 min  
 Delta R.T.: 0.010 min  
 Response: 348791  
 Conc: 1.55 ng/ml

Instrument :  
 ECD\_O  
 ClientSampleId :  
 AR1242CCC500



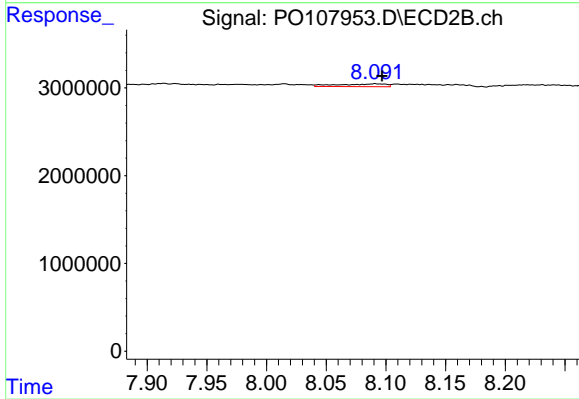
#39 AR-1262-4

R.T.: 7.599 min  
 Delta R.T.: -0.005 min  
 Response: 789795  
 Conc: 2.57 ng/ml



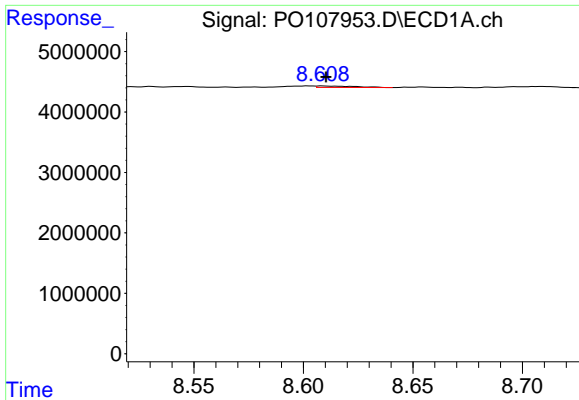
#40 AR-1262-5

R.T.: 9.335 min  
 Delta R.T.: -0.005 min  
 Response: 107015  
 Conc: 0.73 ng/ml



#40 AR-1262-5

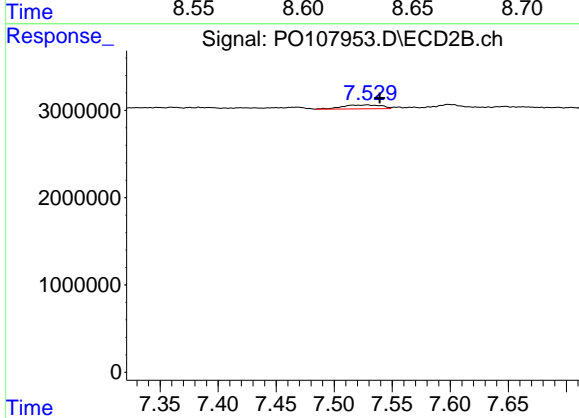
R.T.: 8.091 min  
 Delta R.T.: -0.006 min  
 Response: 909299  
 Conc: 6.39 ng/ml



#41 AR-1268-1

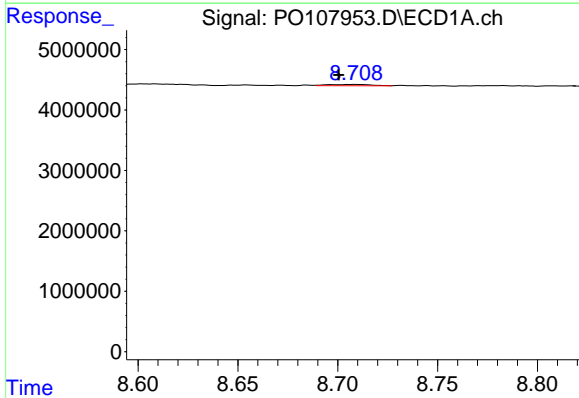
R.T.: 8.609 min  
 Delta R.T.: -0.002 min  
 Response: 317887  
 Conc: 0.65 ng/ml

Instrument :  
 ECD\_O  
 ClientSampleId :  
 AR1242CCC500



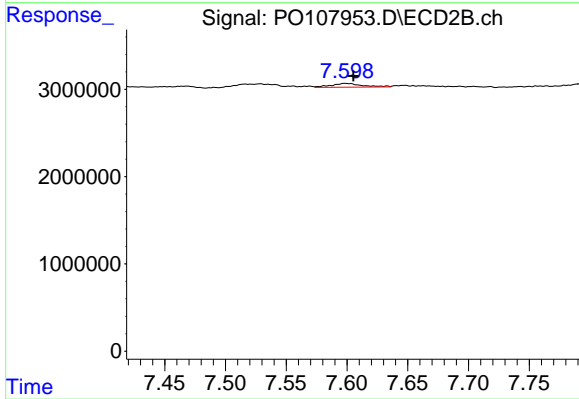
#41 AR-1268-1

R.T.: 7.528 min  
 Delta R.T.: -0.011 min  
 Response: 1052672  
 Conc: 2.23 ng/ml



#42 AR-1268-2

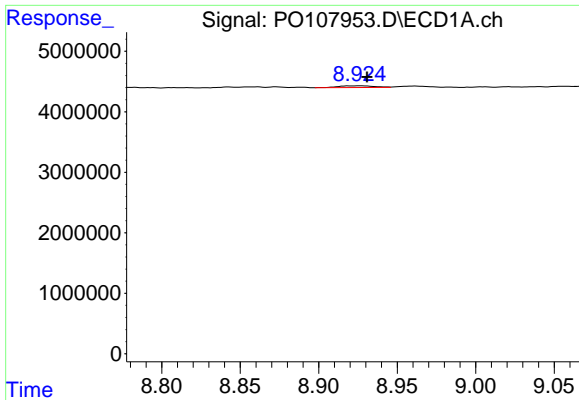
R.T.: 8.708 min  
 Delta R.T.: 0.007 min  
 Response: 348791  
 Conc: 0.79 ng/ml



#42 AR-1268-2

R.T.: 7.599 min  
 Delta R.T.: -0.007 min  
 Response: 789795  
 Conc: 1.81 ng/ml

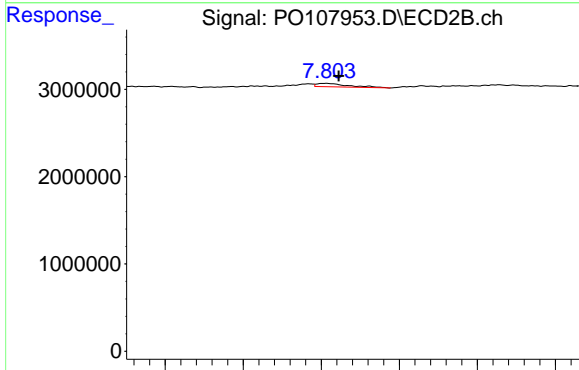




#43 AR-1268-3

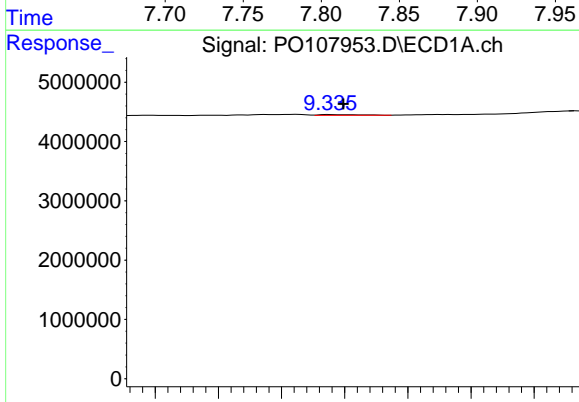
R.T.: 8.927 min  
 Delta R.T.: -0.004 min  
 Response: 445487  
 Conc: 1.24 ng/ml

Instrument :  
 ECD\_O  
 ClientSampleId :  
 AR1242CCC500



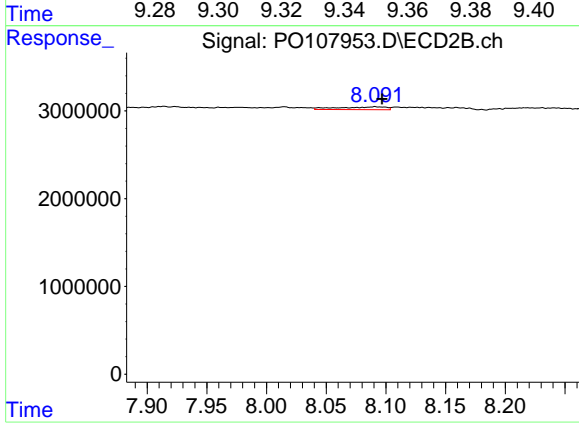
#43 AR-1268-3

R.T.: 7.803 min  
 Delta R.T.: -0.008 min  
 Response: 571367  
 Conc: 1.56 ng/ml



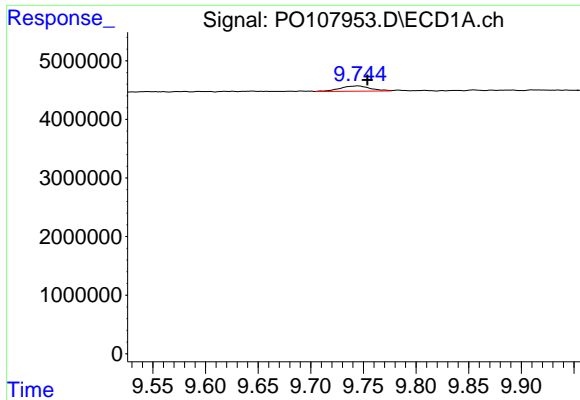
#44 AR-1268-4

R.T.: 9.335 min  
 Delta R.T.: -0.004 min  
 Response: 107015  
 Conc: 0.67 ng/ml



#44 AR-1268-4

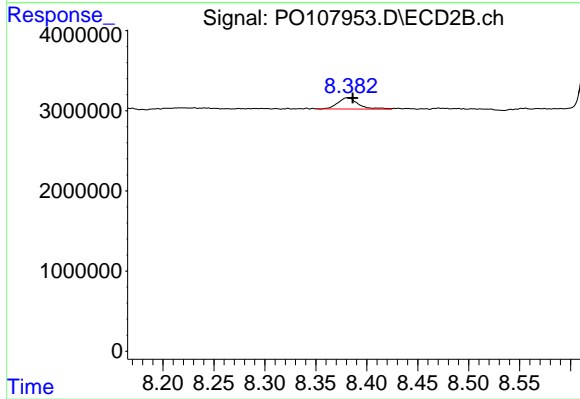
R.T.: 8.091 min  
 Delta R.T.: -0.006 min  
 Response: 909299  
 Conc: 5.88 ng/ml



#45 AR-1268-5

R.T.: 9.745 min  
 Delta R.T.: -0.009 min  
 Response: 1784489  
 Conc: 1.73 ng/ml

Instrument :  
 ECD\_O  
 ClientSampleId :  
 AR1242CCC500



#45 AR-1268-5

R.T.: 8.382 min  
 Delta R.T.: -0.005 min  
 Response: 1944795  
 Conc: 1.59 ng/ml