

Data Path : Z:\pestpcbsrv\HPCHEM1\ECD_O\Data\PO111418\
 Data File : PO051515.D
 Signal(s) : Signal #1: ECD1A.CH Signal #2: ECD2B.CH
 Acq On : 14 Nov 2018 9:19
 Operator : SM/SJ
 Sample : J5908-11
 Misc :
 ALS Vial : 6 Sample Multiplier: 1

Instrument :
 ECD_O
 ClientSampleId :
 SR-4-S

Manual Integrations
 APPROVED

SOHIL
 11/15/2018 2:48:59 AM

Integration File signal 1: autoint1.e
 Integration File signal 2: autoint2.e
 Quant Time: Nov 14 09:39:12 2018
 Quant Method : Z:\pestpcbsrv\HPCHEM1\ECD_O\methods\PO111318.M
 Quant Title : GC EXTRACTABLES
 QLast Update : Wed Nov 14 08:46:55 2018
 Response via : Initial Calibration
 Integrator: ChemStation 6890 Scale Mode: Small noise peaks clipped

Volume Inj. : 2 µl
 Signal #1 Phase : ZB-MR1 Signal #2 Phase: ZB-MR2
 Signal #1 Info : 30Mx0.32mmx 0.50µ Signal #2 Info : 30M x 0.32mm x 0.25µm

Compound	RT#1	RT#2	Resp#1	Resp#2	ng/ml	ng/ml

System Monitoring Compounds						
1) SA Tetrachlo...	4.310	3.303	45677837	16537291	14.303	15.018
2) SA Decachlor...	9.951	8.054	24812652	9250315	12.928	11.159
Target Compounds						
31) L7 AR-1260-1	7.074	5.735	2430328	879778	27.285	20.385m#
32) L7 AR-1260-2	7.330	5.919	2586114	742396	20.365	13.056m#
33) L7 AR-1260-3	7.688	6.062	2860657	1045644	32.914	20.777 #
34) L7 AR-1260-4	7.912	6.518	3236434	705601	36.827	20.556 #
35) L7 AR-1260-5	8.224	6.758	5294053	2041998	25.711	20.933

(f)=RT Delta > 1/2 Window (#)=Amounts differ by > 25% (m)=manual int.

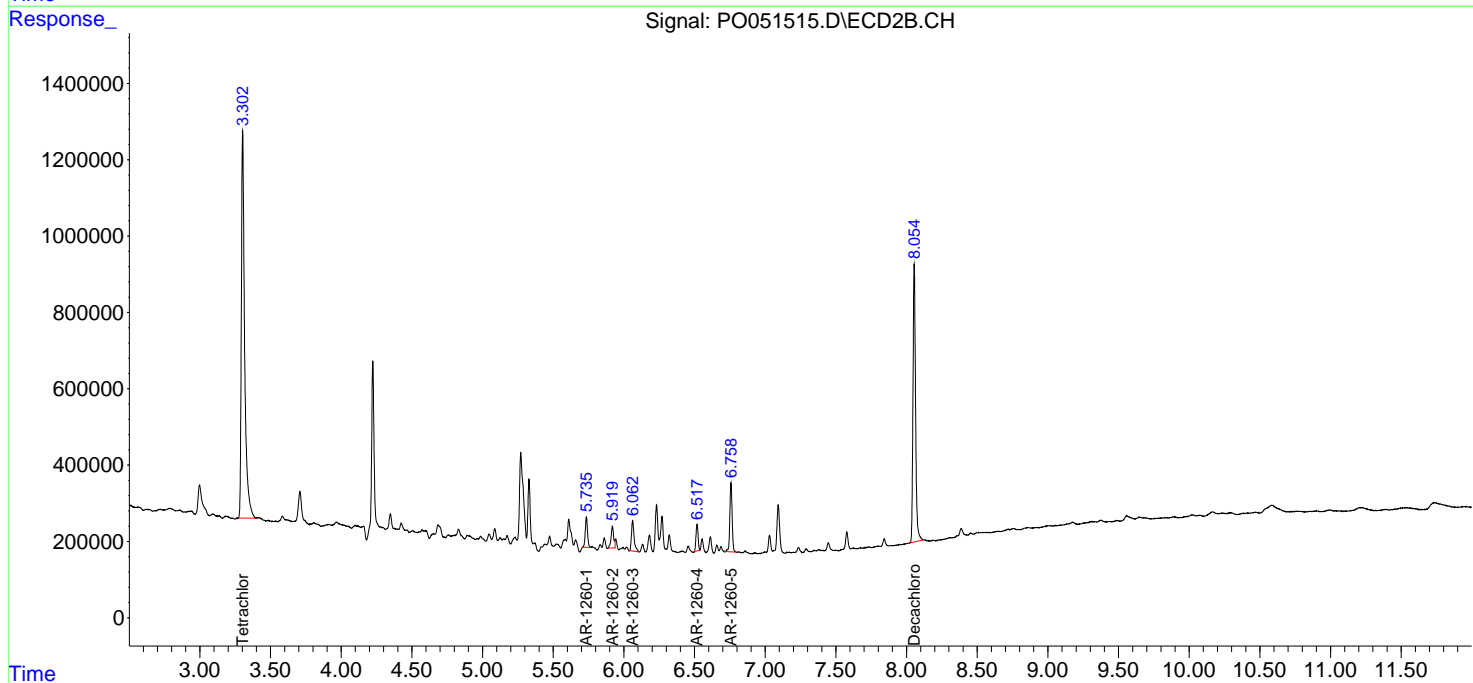
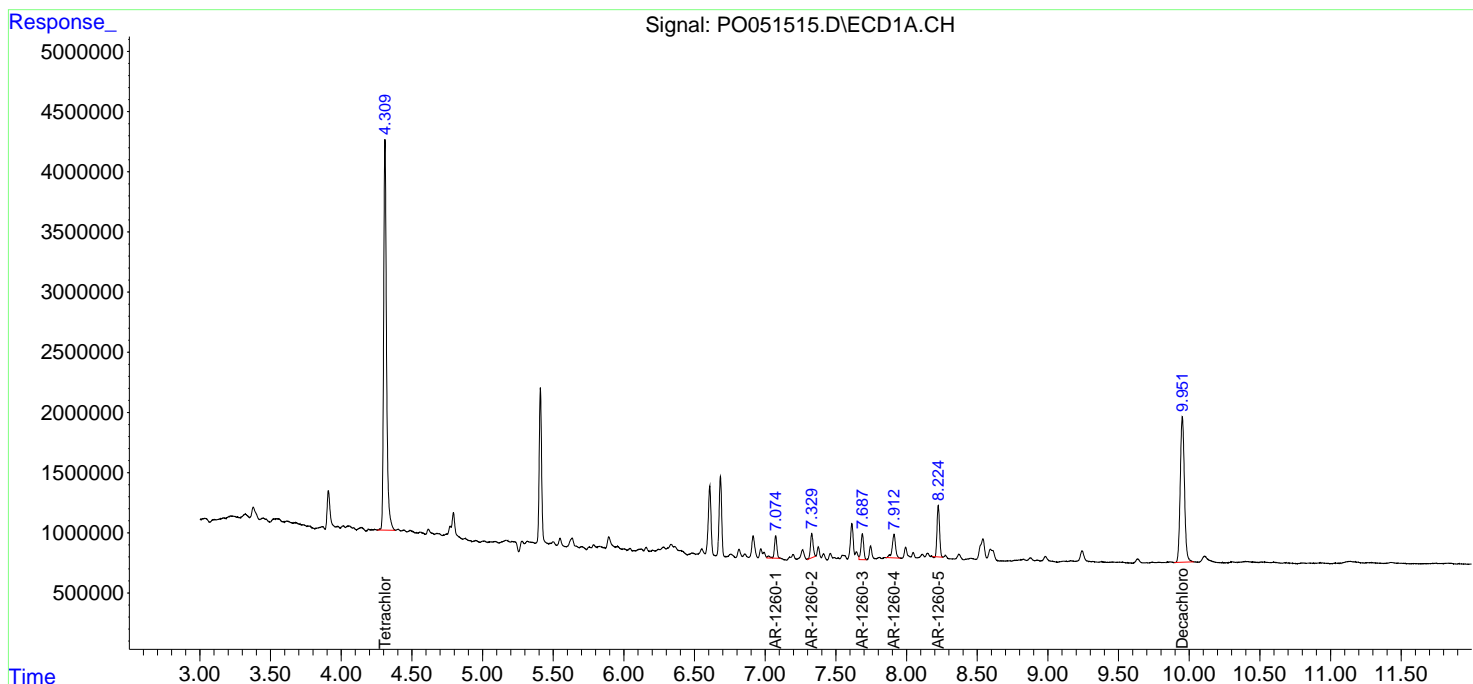
Data Path : Z:\pestpcbsrv\HPCHEM1\ECD_O\Data\PO111418\
 Data File : PO051515.D
 Signal(s) : Signal #1: ECD1A.CH Signal #2: ECD2B.CH
 Acq On : 14 Nov 2018 9:19
 Operator : SM/SJ
 Sample : J5908-11
 Misc :
 ALS Vial : 6 Sample Multiplier: 1

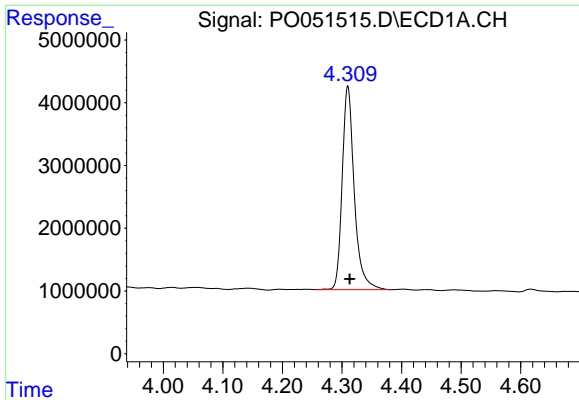
Instrument :
 ECD_O
 ClientSampled :
 SR-4-S

Manual Integrations
 APPROVED
 SOHIL
 11/15/2018 2:48:59 AM

Integration File signal 1: autoint1.e
 Integration File signal 2: autoint2.e
 Quant Time: Nov 14 09:39:12 2018
 Quant Method : Z:\pestpcbsrv\HPCHEM1\ECD_O\methods\PO111318.M
 Quant Title : GC EXTRACTABLES
 QLast Update : Wed Nov 14 08:46:55 2018
 Response via : Initial Calibration
 Integrator: ChemStation 6890 Scale Mode: Small noise peaks clipped

Volume Inj. : 2 µl
 Signal #1 Phase : ZB-MR1 Signal #2 Phase: ZB-MR2
 Signal #1 Info : 30Mx0.32mmx 0.50µ Signal #2 Info : 30M x 0.32mm x 0.25µm

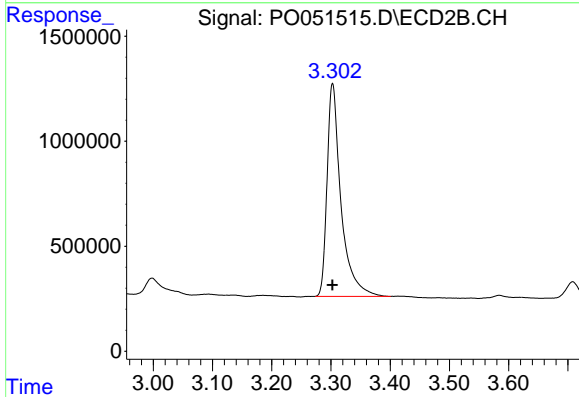




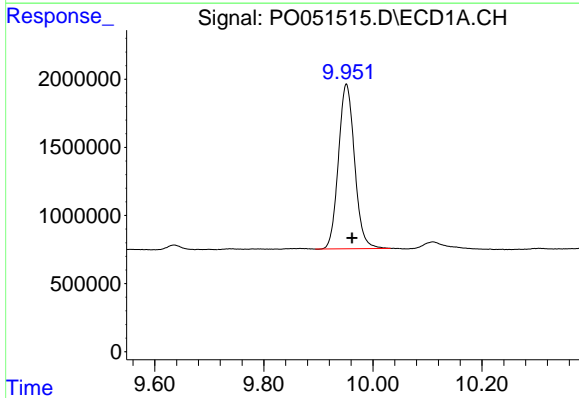
#1 Tetrachloro-m-xylene
 R.T.: 4.310 min
 Delta R.T.: -0.003 min
 Response: 45677837
 Conc: 14.30 ng/ml

Instrument :
 ECD_O
 ClientSampled :
 SR-4-S

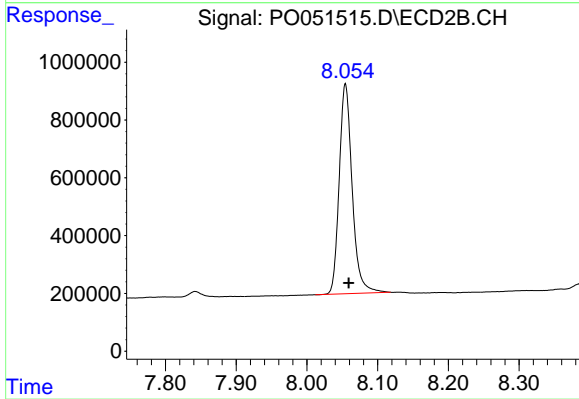
Manual Integrations
 APPROVED
 SOHIL
 11/15/2018 2:48:59 AM



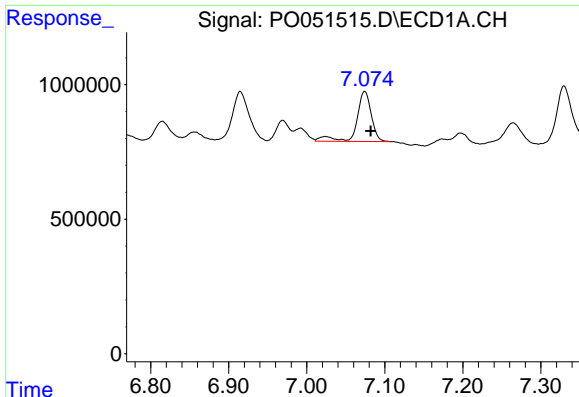
#1 Tetrachloro-m-xylene
 R.T.: 3.303 min
 Delta R.T.: 0.000 min
 Response: 16537291
 Conc: 15.02 ng/ml



#2 Decachlorobiphenyl
 R.T.: 9.951 min
 Delta R.T.: -0.010 min
 Response: 24812652
 Conc: 12.93 ng/ml



#2 Decachlorobiphenyl
 R.T.: 8.054 min
 Delta R.T.: -0.005 min
 Response: 9250315
 Conc: 11.16 ng/ml



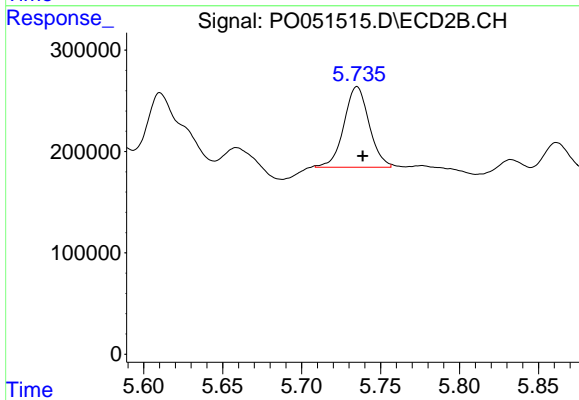
#31 AR-1260-1

R.T.: 7.074 min
 Delta R.T.: -0.008 min
 Response: 2430328
 Conc: 27.29 ng/ml

Instrument :
 ECD_O
 ClientSampled :
 SR-4-S

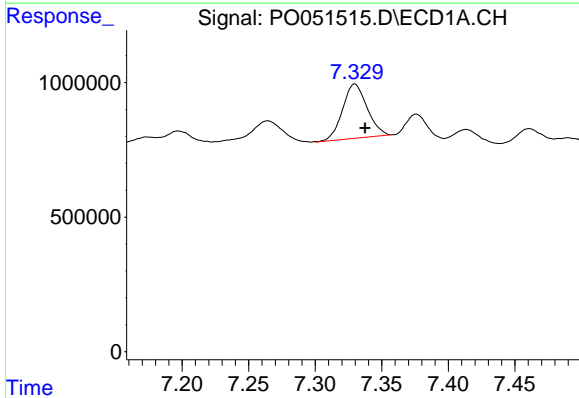
Manual Integrations
 APPROVED

SOHIL
 11/15/2018 2:48:59 AM



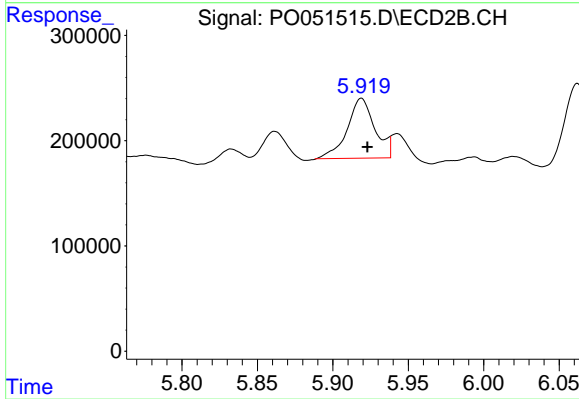
#31 AR-1260-1

R.T.: 5.735 min
 Delta R.T.: -0.004 min
 Response: 879778
 Conc: 20.38 ng/ml m



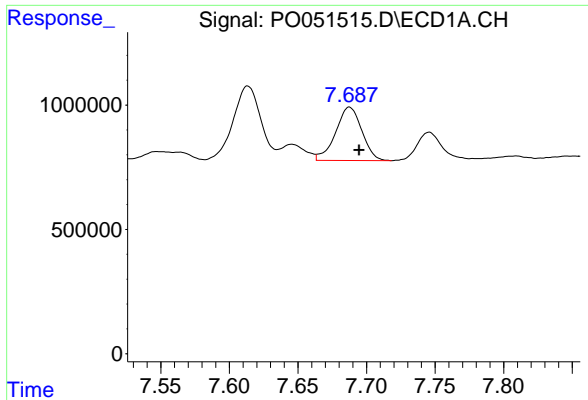
#32 AR-1260-2

R.T.: 7.330 min
 Delta R.T.: -0.008 min
 Response: 2586114
 Conc: 20.37 ng/ml



#32 AR-1260-2

R.T.: 5.919 min
 Delta R.T.: -0.004 min
 Response: 742396
 Conc: 13.06 ng/ml m

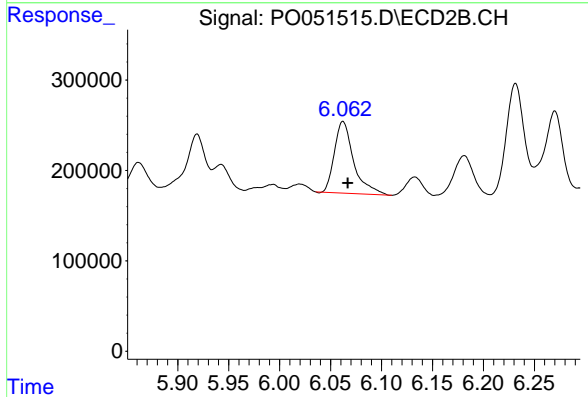


#33 AR-1260-3

R.T.: 7.688 min
 Delta R.T.: -0.007 min
 Response: 2860657
 Conc: 32.91 ng/ml

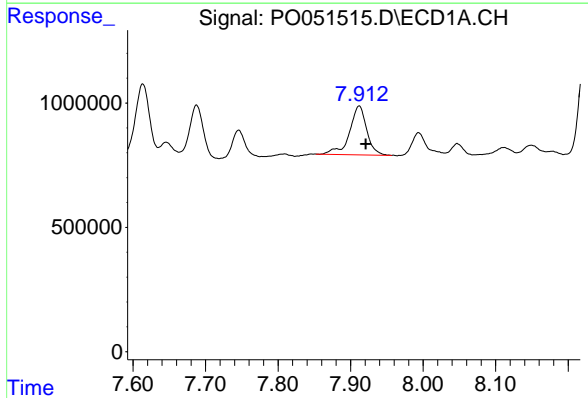
Instrument :
 ECD_O
ClientSampled :
 SR-4-S

Manual Integrations
APPROVED
 SOHIL
 11/15/2018 2:48:59 AM



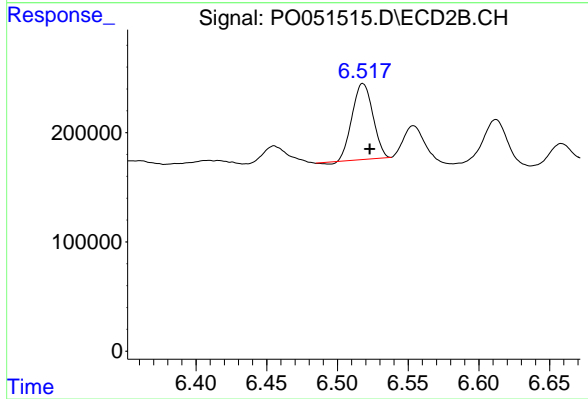
#33 AR-1260-3

R.T.: 6.062 min
 Delta R.T.: -0.005 min
 Response: 1045644
 Conc: 20.78 ng/ml



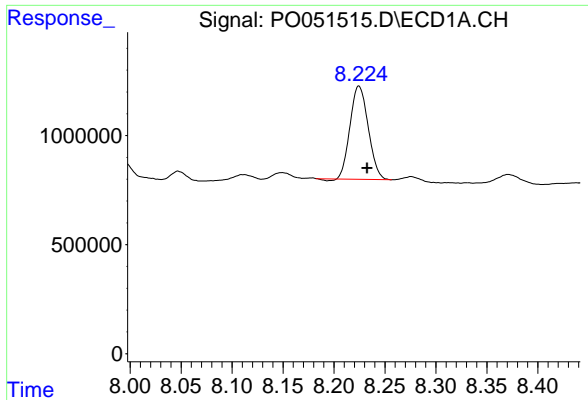
#34 AR-1260-4

R.T.: 7.912 min
 Delta R.T.: -0.009 min
 Response: 3236434
 Conc: 36.83 ng/ml



#34 AR-1260-4

R.T.: 6.518 min
 Delta R.T.: -0.005 min
 Response: 705601
 Conc: 20.56 ng/ml



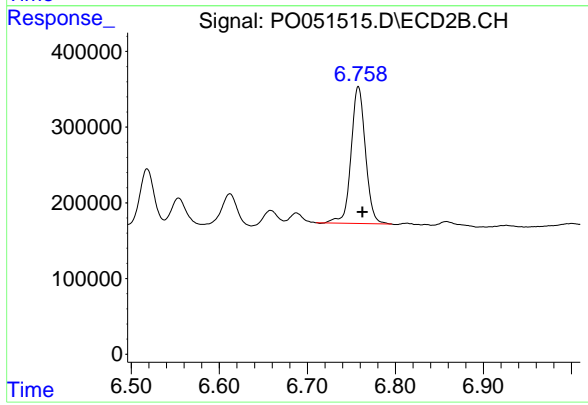
#35 AR-1260-5

R.T.: 8.224 min
Delta R.T.: -0.008 min
Response: 5294053
Conc: 25.71 ng/ml

Instrument :
ECD_O
ClientSampled :
SR-4-S

Manual Integrations
APPROVED

SOHIL
11/15/2018 2:48:59 AM



#35 AR-1260-5

R.T.: 6.758 min
Delta R.T.: -0.005 min
Response: 2041998
Conc: 20.93 ng/ml