

Data Path : Z:\pestpcbsrv\HPCHEM1\ECD_0\Data\PO111518\
 Data File : PO051574.D
 Signal(s) : Signal #1: ECD1A.CH Signal #2: ECD2B.CH
 Acq On : 15 Nov 2018 18:45
 Operator : SM/SJ
 Sample : J5955-16
 Misc :
 ALS Vial : 17 Sample Multiplier: 1

Instrument :
 ECD_0
 ClientSampleId :

Integration File signal 1: autoint1.e
 Integration File signal 2: autoint2.e
 Quant Time: Nov 16 00:05:09 2018
 Quant Method : Z:\pestpcbsrv\HPCHEM1\ECD_0\methods\PO111318.M
 Quant Title : GC EXTRACTABLES
 QLast Update : Thu Nov 15 08:04:19 2018
 Response via : Initial Calibration
 Integrator: ChemStation 6890 Scale Mode: Small noise peaks clipped

Volume Inj. : 2 µl
 Signal #1 Phase : ZB-MR1 Signal #2 Phase: ZB-MR2
 Signal #1 Info : 30Mx0.32mmx 0.50µ Signal #2 Info : 30M x 0.32mm x 0.25µm

Compound	RT#1	RT#2	Resp#1	Resp#2	ng/ml	ng/ml

System Monitoring Compounds						
1) SA Tetrachlo...	4.309	3.301	62321521	22092725	19.515	20.063
2) SA Decachlor...	9.950	8.053	32578923	15051975	16.974	18.158

Target Compounds

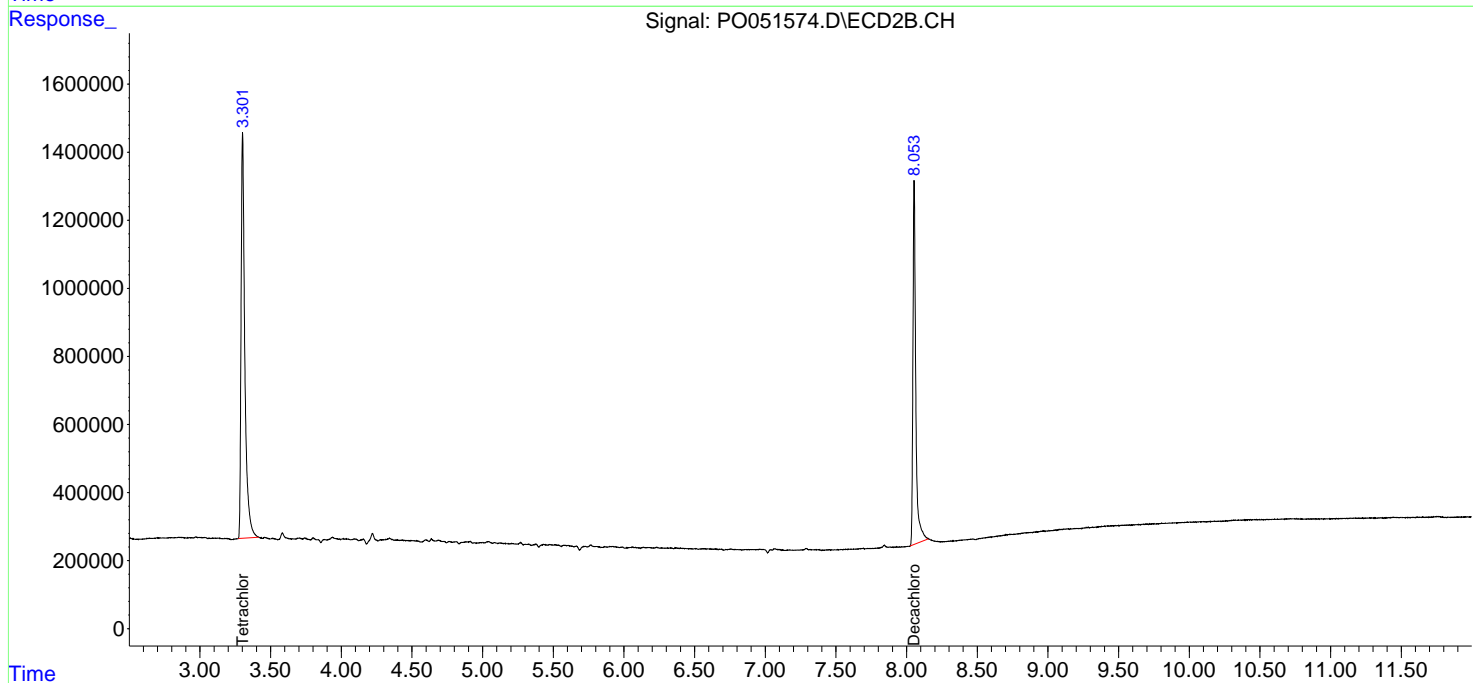
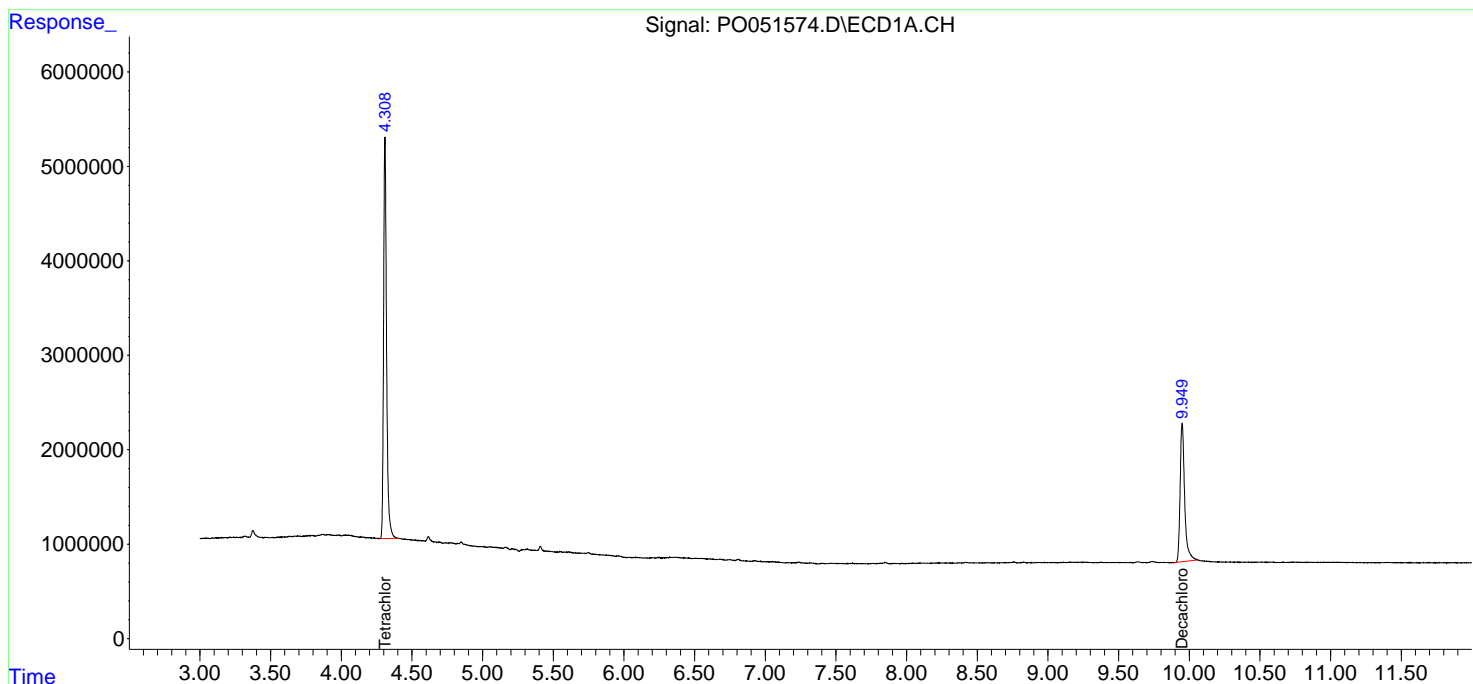
(f)=RT Delta > 1/2 Window (#)=Amounts differ by > 25% (m)=manual int.

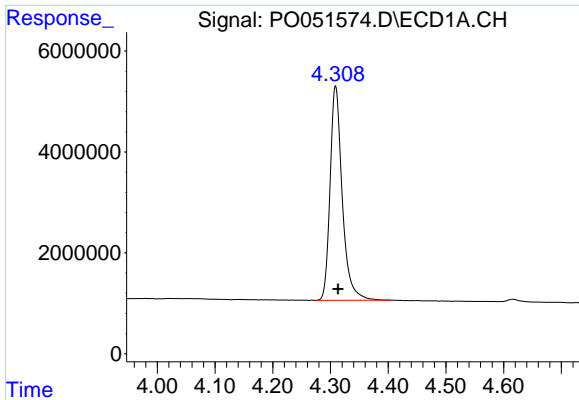
Data Path : Z:\pestpcbsrv\HPCHEM1\ECD_0\Data\PO111518\
Data File : PO051574.D
Signal(s) : Signal #1: ECD1A.CH Signal #2: ECD2B.CH
Acq On : 15 Nov 2018 18:45
Operator : SM/SJ
Sample : J5955-16
Misc :
ALS Vial : 17 Sample Multiplier: 1

Instrument :
ECD_O
ClientSampled :

Integration File signal 1: autoint1.e
Integration File signal 2: autoint2.e
Quant Time: Nov 16 00:05:09 2018
Quant Method : Z:\pestpcbsrv\HPCHEM1\ECD_0\methods\PO111318.M
Quant Title : GC EXTRACTABLES
QLast Update : Thu Nov 15 08:04:19 2018
Response via : Initial Calibration
Integrator: ChemStation 6890 Scale Mode: Small noise peaks clipped

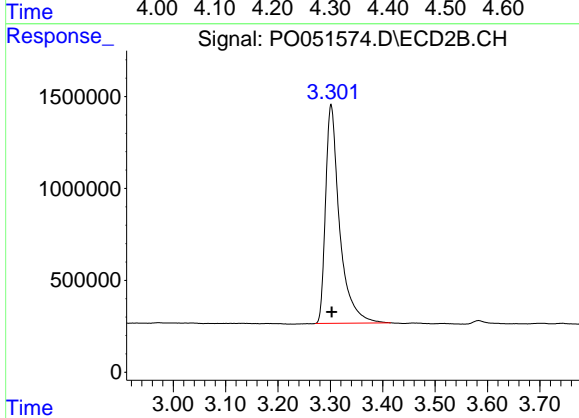
Volume Inj. : 2 µl
Signal #1 Phase : ZB-MR1 Signal #2 Phase: ZB-MR2
Signal #1 Info : 30Mx0.32mmx 0.50µ Signal #2 Info : 30M x 0.32mm x 0.25µm



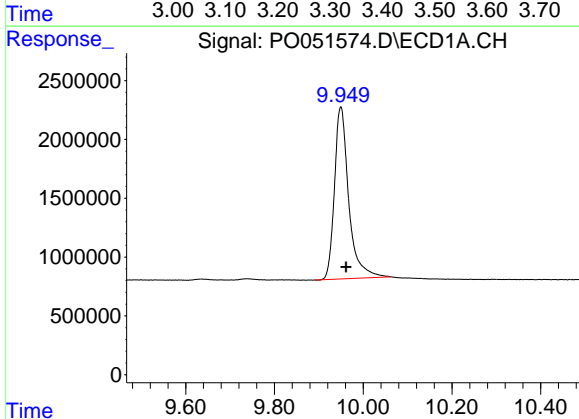


#1 Tetrachloro-m-xylene
R.T.: 4.309 min
Delta R.T.: -0.004 min
Response: 62321521
Conc: 19.51 ng/ml

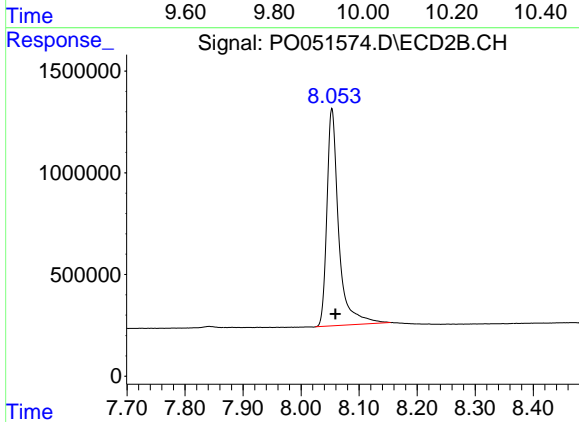
Instrument :
ECD_O
ClientSampleId :



#1 Tetrachloro-m-xylene
R.T.: 3.301 min
Delta R.T.: 0.000 min
Response: 22092725
Conc: 20.06 ng/ml



#2 Decachlorobiphenyl
R.T.: 9.950 min
Delta R.T.: -0.012 min
Response: 32578923
Conc: 16.97 ng/ml



#2 Decachlorobiphenyl
R.T.: 8.053 min
Delta R.T.: -0.006 min
Response: 15051975
Conc: 18.16 ng/ml