

Data Path : Z:\pestpcbsrv\HPCHEM1\ECD_0\Data\PO111523\
 Data File : PO099834.D
 Signal(s) : Signal #1: ECD1A.ch Signal #2: ECD2B.ch
 Acq On : 16 Nov 2023 05:26
 Operator : YP/AJ
 Sample : 05414-06
 Misc :
 ALS Vial : 50 Sample Multiplier: 1

Instrument :
 ECD_0
ClientSampleId :
 06-A-06-B-06-C

Manual Integrations
APPROVED

Reviewed By :Yogesh Patel 11/16/2023
 Supervised By :Ankita Jodhani 11/16/2023

Integration File signal 1: autoint1.e
 Integration File signal 2: autoint2.e
 Quant Time: Nov 16 05:41:54 2023
 Quant Method : Z:\pestpcbsrv\HPCHEM1\ECD_0\methods\PO111323.M
 Quant Title : GC EXTRACTABLES
 QLast Update : Tue Nov 14 04:21:47 2023
 Response via : Initial Calibration
 Integrator: ChemStation

Volume Inj. : 2 µl
 Signal #1 Phase : ZB-MR1 Signal #2 Phase: ZB-MR2
 Signal #1 Info : 30Mx0.32mmx 0.50µ Signal #2 Info : 30M x 0.32mm x 0.25µm

Compound	RT#1	RT#2	Resp#1	Resp#2	ng/ml	ng/ml

System Monitoring Compounds						
1) SA Tetrachlo...	4.490	3.716	36634378	28017408	21.422	23.719
2) SA Decachlor...	10.371	8.816	22636773	23810164	24.245	24.258m

Target Compounds

(f)=RT Delta > 1/2 Window (#)=Amounts differ by > 25% (m)=manual int.

Data Path : Z:\pestpcbsrv\HPCHEM1\ECD_0\Data\PO111523\
 Data File : PO099834.D
 Signal(s) : Signal #1: ECD1A.ch Signal #2: ECD2B.ch
 Acq On : 16 Nov 2023 05:26
 Operator : YP/AJ
 Sample : 05414-06
 Misc :
 ALS Vial : 50 Sample Multiplier: 1

Instrument :

ECD_0

ClientSampleId :

06-A-06-B-06-C

Manual Integrations

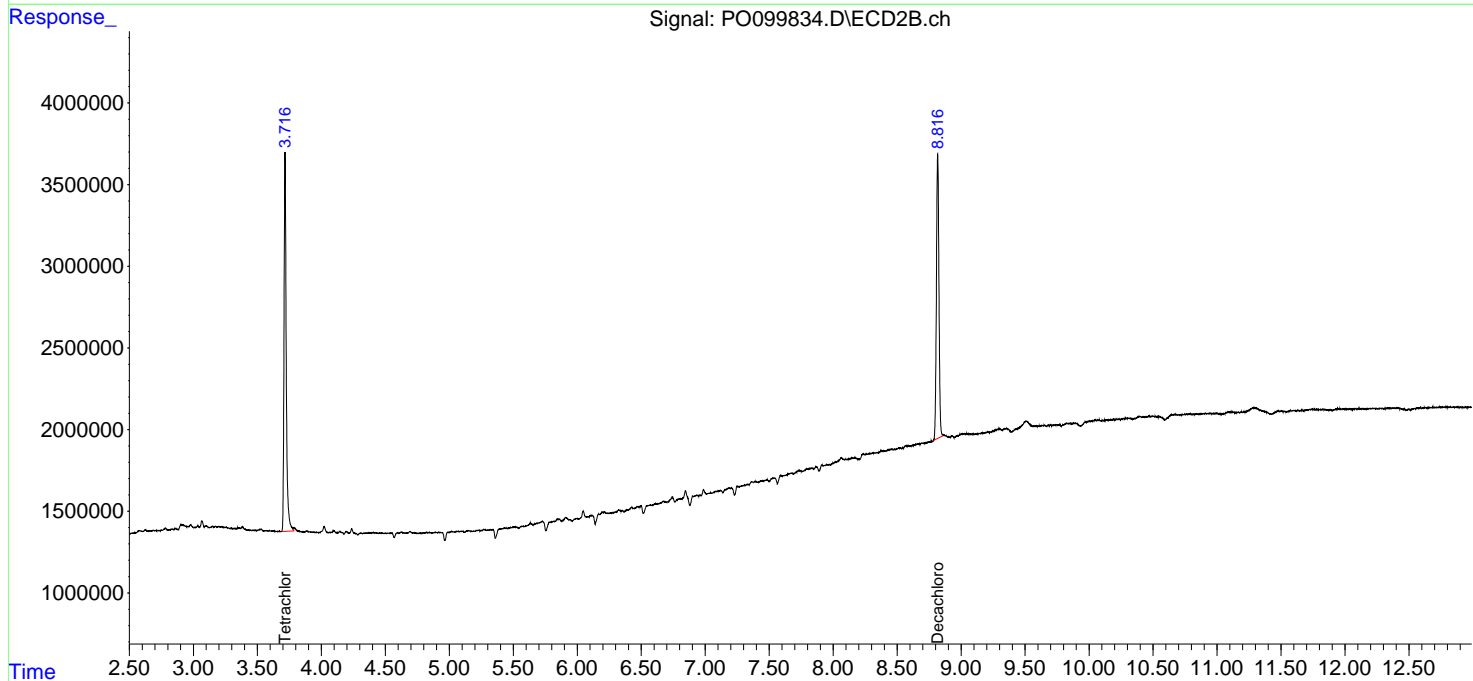
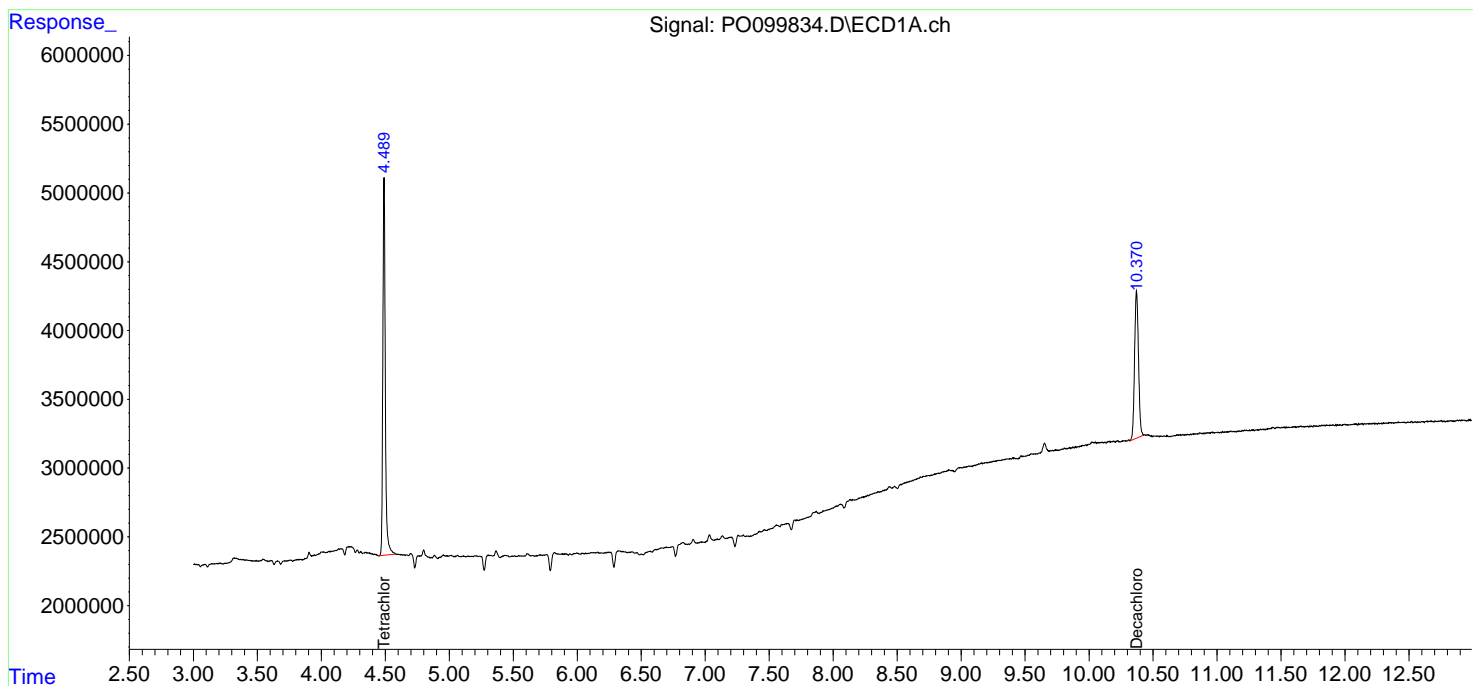
APPROVED

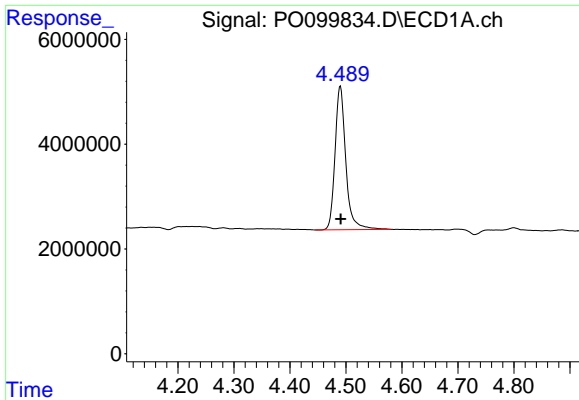
Reviewed By :Yogesh Patel 11/16/2023

Supervised By :Ankita Jodhani 11/16/2023

Integration File signal 1: autoint1.e
 Integration File signal 2: autoint2.e
 Quant Time: Nov 16 05:41:54 2023
 Quant Method : Z:\pestpcbsrv\HPCHEM1\ECD_0\methods\PO111323.M
 Quant Title : GC EXTRACTABLES
 QLast Update : Tue Nov 14 04:21:47 2023
 Response via : Initial Calibration
 Integrator: ChemStation

Volume Inj. : 2 µl
 Signal #1 Phase : ZB-MR1 Signal #2 Phase: ZB-MR2
 Signal #1 Info : 30Mx0.32mmx 0.50µ Signal #2 Info : 30M x 0.32mm x 0.25µm





#1 Tetrachloro-m-xylene

R.T.: 4.490 min
 Delta R.T.: 0.000 min
 Response: 36634378
 Conc: 21.42 ng/ml

Instrument :

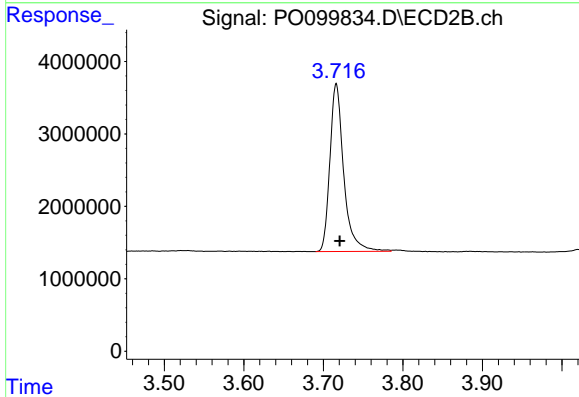
ECD_O

ClientSampleId :

06-A-06-B-06-C

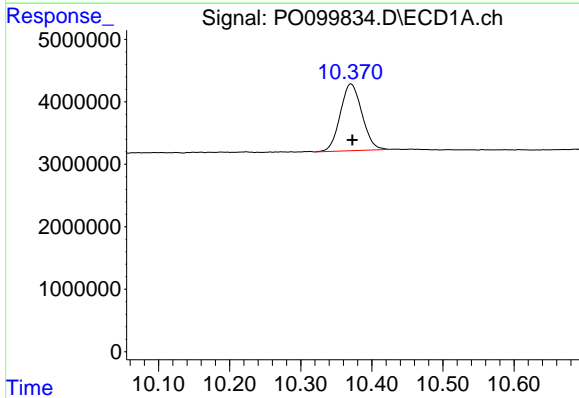
Manual Integrations
 APPROVED

Reviewed By :Yogesh Patel 11/16/2023
 Supervised By :Ankita Jodhani 11/16/2023



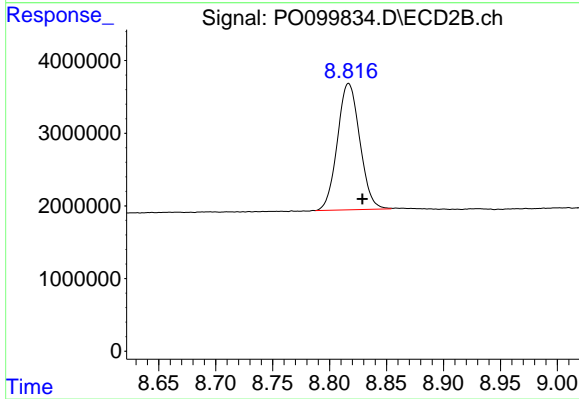
#1 Tetrachloro-m-xylene

R.T.: 3.716 min
 Delta R.T.: -0.004 min
 Response: 28017408
 Conc: 23.72 ng/ml



#2 Decachlorobiphenyl

R.T.: 10.371 min
 Delta R.T.: -0.002 min
 Response: 22636773
 Conc: 24.24 ng/ml



#2 Decachlorobiphenyl

R.T.: 8.816 min
 Delta R.T.: -0.012 min
 Response: 23810164
 Conc: 24.26 ng/ml m