

Data Path : Z:\pestpcbsrv\HPCHEM1\ECD\_0\Data\PO111723\  
 Data File : PO099916.D  
 Signal(s) : Signal #1: ECD1A.ch Signal #2: ECD2B.ch  
 Acq On : 17 Nov 2023 12:52  
 Operator : YP/AJ  
 Sample : PB157230BL  
 Misc :  
 ALS Vial : 15 Sample Multiplier: 1

Instrument :  
 ECD\_0  
 ClientSampleId :  
 PB157230BL

Integration File signal 1: autoint1.e  
 Integration File signal 2: autoint2.e  
 Quant Time: Nov 17 21:38:57 2023  
 Quant Method : Z:\pestpcbsrv\HPCHEM1\ECD\_0\methods\PO111323.M  
 Quant Title : GC EXTRACTABLES  
 QLast Update : Tue Nov 14 04:21:47 2023  
 Response via : Initial Calibration  
 Integrator: ChemStation

Volume Inj. : 2 µl  
 Signal #1 Phase : ZB-MR1 Signal #2 Phase: ZB-MR2  
 Signal #1 Info : 30Mx0.32mmx 0.50µ Signal #2 Info : 30M x 0.32mm x 0.25µm

| Compound                    | RT#1   | RT#2  | Resp#1   | Resp#2   | ng/ml  | ng/ml  |
|-----------------------------|--------|-------|----------|----------|--------|--------|
| -----                       |        |       |          |          |        |        |
| System Monitoring Compounds |        |       |          |          |        |        |
| 1) SA Tetrachlo...          | 4.489  | 3.715 | 31740984 | 23515001 | 18.561 | 19.907 |
| 2) SA Decachlor...          | 10.369 | 8.812 | 21536574 | 20417391 | 23.067 | 20.801 |

Target Compounds

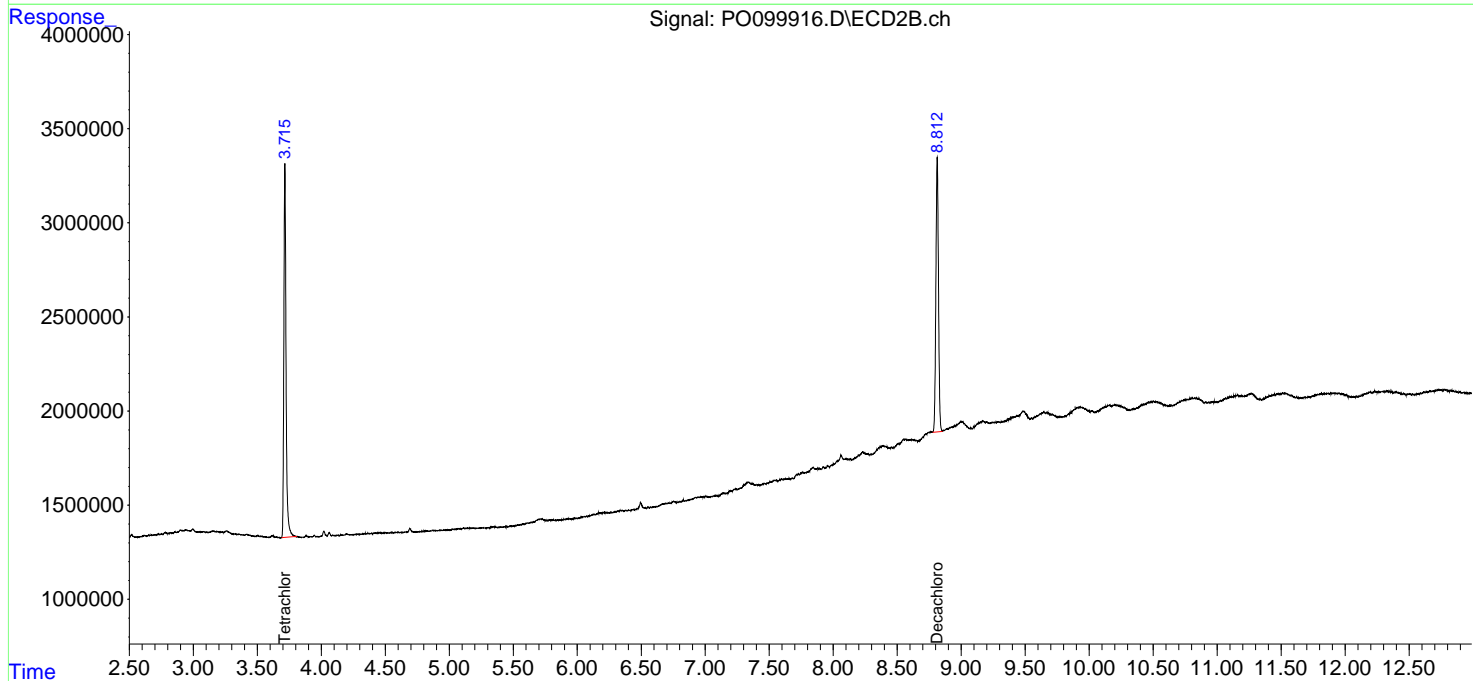
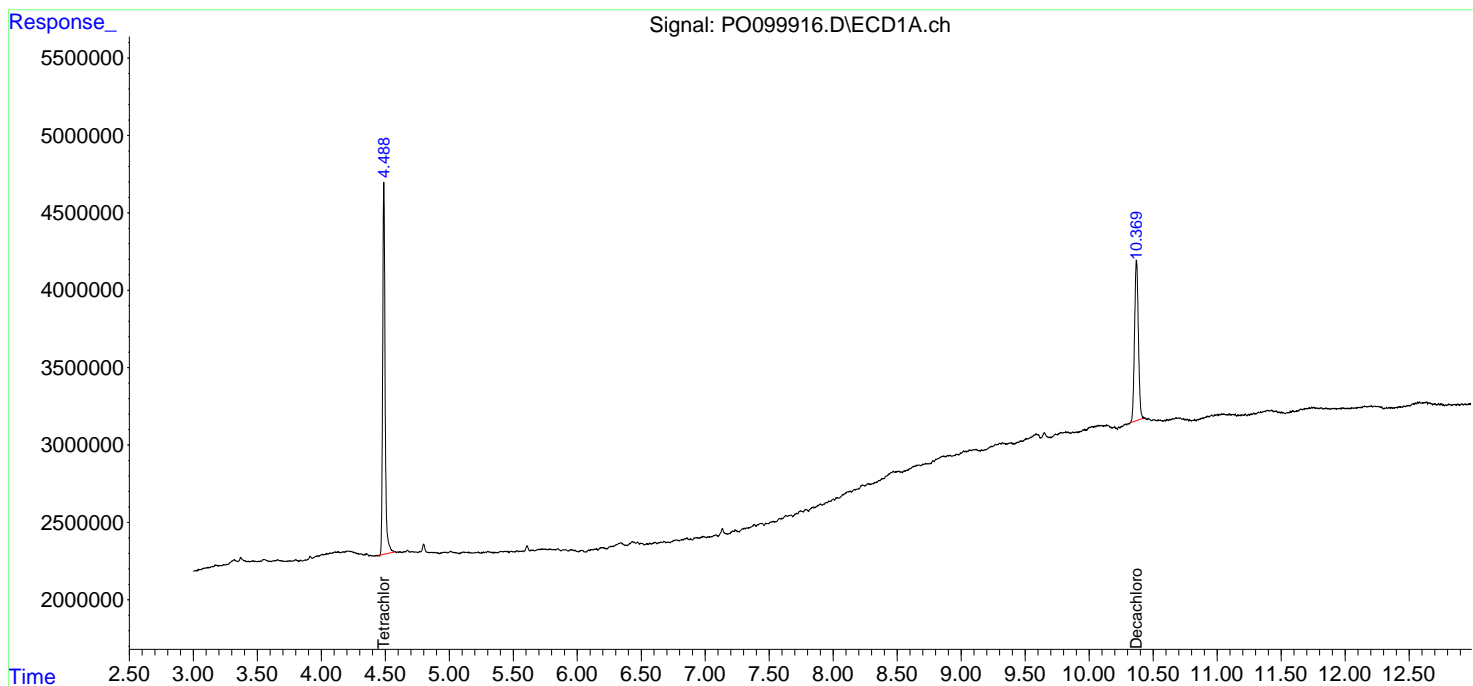
(f)=RT Delta > 1/2 Window (#)=Amounts differ by > 25% (m)=manual int.

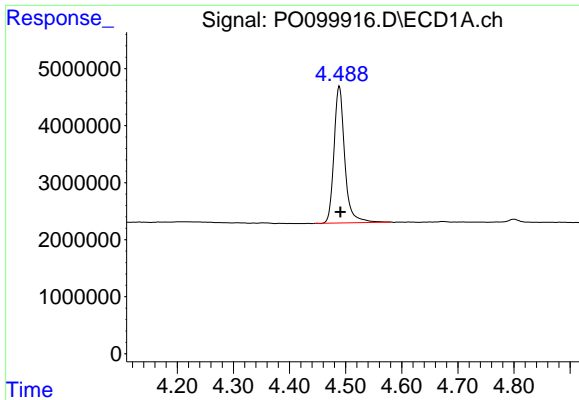
Data Path : Z:\pestpcbsrv\HPCHEM1\ECD\_O\Data\PO111723\  
 Data File : PO099916.D  
 Signal(s) : Signal #1: ECD1A.ch Signal #2: ECD2B.ch  
 Acq On : 17 Nov 2023 12:52  
 Operator : YP/AJ  
 Sample : PB157230BL  
 Misc :  
 ALS Vial : 15 Sample Multiplier: 1

Instrument :  
 ECD\_O  
 ClientSampleId :  
 PB157230BL

Integration File signal 1: autoint1.e  
 Integration File signal 2: autoint2.e  
 Quant Time: Nov 17 21:38:57 2023  
 Quant Method : Z:\pestpcbsrv\HPCHEM1\ECD\_O\methods\PO111323.M  
 Quant Title : GC EXTRACTABLES  
 QLast Update : Tue Nov 14 04:21:47 2023  
 Response via : Initial Calibration  
 Integrator: ChemStation

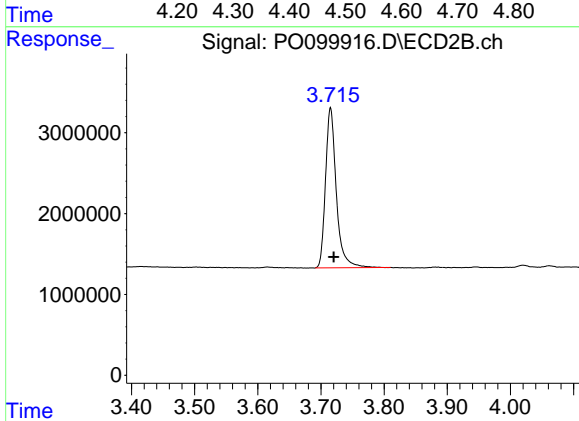
Volume Inj. : 2 µl  
 Signal #1 Phase : ZB-MR1 Signal #2 Phase: ZB-MR2  
 Signal #1 Info : 30Mx0.32mmx 0.50µ Signal #2 Info : 30M x 0.32mm x 0.25µm



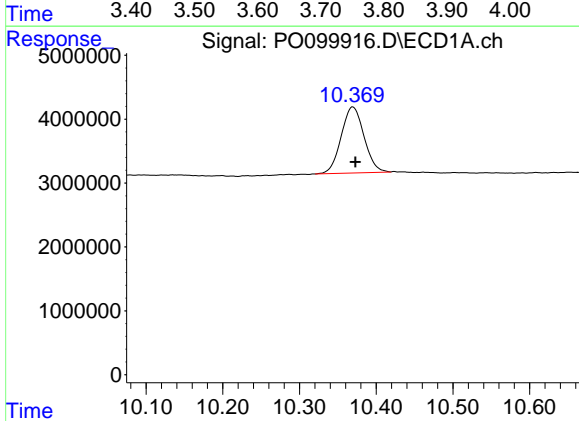


#1 Tetrachloro-m-xylene  
 R.T.: 4.489 min  
 Delta R.T.: -0.002 min  
 Response: 31740984  
 Conc: 18.56 ng/ml

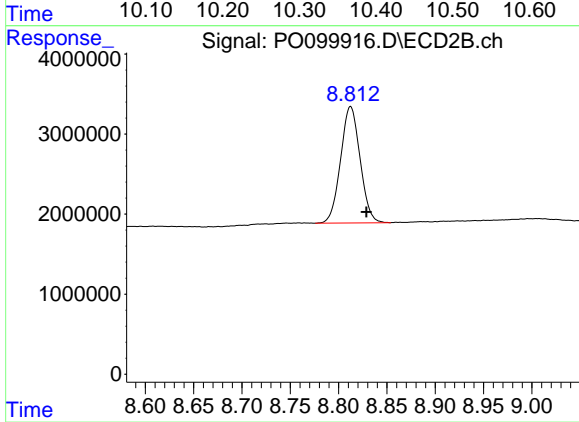
Instrument :  
 ECD\_O  
 ClientSampleId :  
 PB157230BL



#1 Tetrachloro-m-xylene  
 R.T.: 3.715 min  
 Delta R.T.: -0.005 min  
 Response: 23515001  
 Conc: 19.91 ng/ml



#2 Decachlorobiphenyl  
 R.T.: 10.369 min  
 Delta R.T.: -0.004 min  
 Response: 21536574  
 Conc: 23.07 ng/ml



#2 Decachlorobiphenyl  
 R.T.: 8.812 min  
 Delta R.T.: -0.016 min  
 Response: 20417391  
 Conc: 20.80 ng/ml