

Data Path : Z:\pestpcbsrv\HPCHEM1\ECD\_0\Data\PO111820\  
 Data File : PO073299.D  
 Signal(s) : Signal #1: ECD1A.CH Signal #2: ECD2B.CH  
 Acq On : 18 Nov 2020 17:30  
 Operator : DD\AJ  
 Sample : I.BLK  
 Misc :  
 ALS Vial : 2 Sample Multiplier: 1

Instrument :  
 ECD\_0  
 ClientSampled :  
 I.BLK

Integration File signal 1: autoint1.e  
 Integration File signal 2: autoint2.e  
 Quant Time: Nov 18 18:12:00 2020  
 Quant Method : Z:\pestpcbsrv\HPCHEM1\ECD\_0\methods\PO111720.M  
 Quant Title : GC EXTRACTABLES  
 QLast Update : Wed Nov 18 05:08:01 2020  
 Response via : Initial Calibration  
 Integrator: ChemStation 6890 Scale Mode: Small noise peaks clipped

Volume Inj. : 2 µl  
 Signal #1 Phase : ZB-MR2 Signal #2 Phase: ZB-MR2  
 Signal #1 Info : 30Mx0.32mmx 0.50µ Signal #2 Info : 30M x 0.32mm x 0.25µm

Compound	RT#1	RT#2	Resp#1	Resp#2	ng/ml	ng/ml
-----						
System Monitoring Compounds						
1) SA Tetrachlo...	4.948	4.012	1459763	833015	23.199	23.205
2) SA Decachlor...	10.985	9.280	1192225	844944	22.275	24.184
Target Compounds						
6) L1 AR-1016-4	0.000	5.549f	0	7119	N.D.	7.863 #
9) L2 AR-1221-2	0.000	4.364	0	10949	N.D.	33.534 #
14) L3 AR-1232-4	0.000	5.579	0	351	N.D.	0.796 #
16) L4 AR-1242-1	6.232f	0.000	66222	0	31.111	N.D. #
19) L4 AR-1242-4	0.000	5.579	0	351	N.D.	0.396 #
20) L4 AR-1242-5	0.000	6.152f	0	290070	N.D.	248.635 #
22) L5 AR-1248-2	0.000	5.549f	0	7119	N.D.	5.621 #
23) L5 AR-1248-3	0.000	5.579	0	351	N.D.	0.267 #
24) L5 AR-1248-4	7.194f	0.000	804288	0	270.555	N.D. #
25) L5 AR-1248-5	0.000	6.152f	0	290070	N.D.	174.922 #
26) L6 AR-1254-1	7.194	6.152f	804288	290070	273.115	117.956 #
28) L6 AR-1254-3	7.820f	6.732f	172948	790857	36.171	216.624 #
30) L6 AR-1254-5	0.000	7.368	0	3369	N.D.	1.016 #
32) L7 AR-1260-2	8.236	0.000	108737	0	25.379	N.D. #
33) L7 AR-1260-3	8.594	7.202	58868	19683	18.186	7.993 #
36) L8 AR-1262-1	8.594	7.368	58868	3369	11.906	2.100 #
39) L8 AR-1262-4	0.000	8.289f	0	999	N.D.	0.264 #
40) L8 AR-1262-5	0.000	8.792f	0	4307	N.D.	2.504 #
42) L9 AR-1268-2	9.590f	8.289f	70663	999	8.329	0.184 #
43) L9 AR-1268-3	0.000	8.479	0	3241	N.D.	0.685 #
44) L9 AR-1268-4	0.000	8.792f	0	4307	N.D.	2.208 #
45) L9 AR-1268-5	0.000	9.034	0	9086	N.D.	0.663 #
-----						

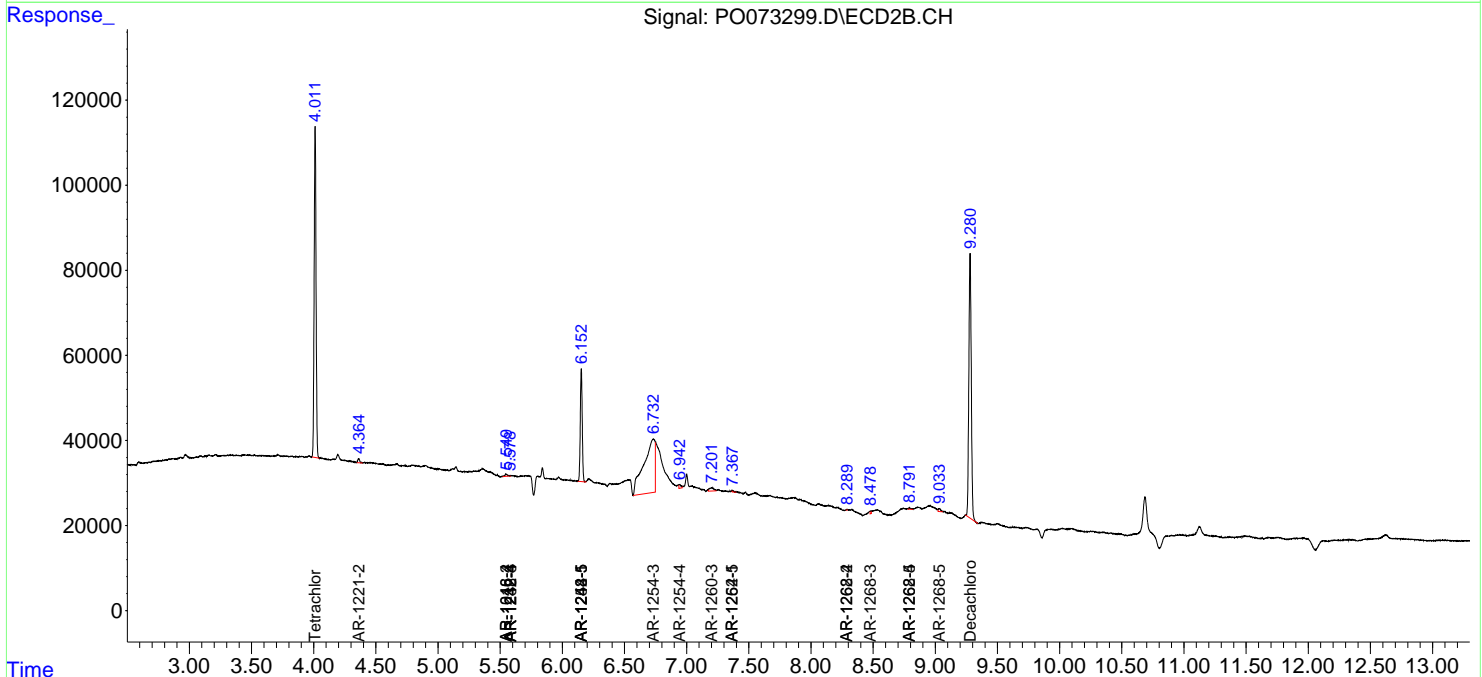
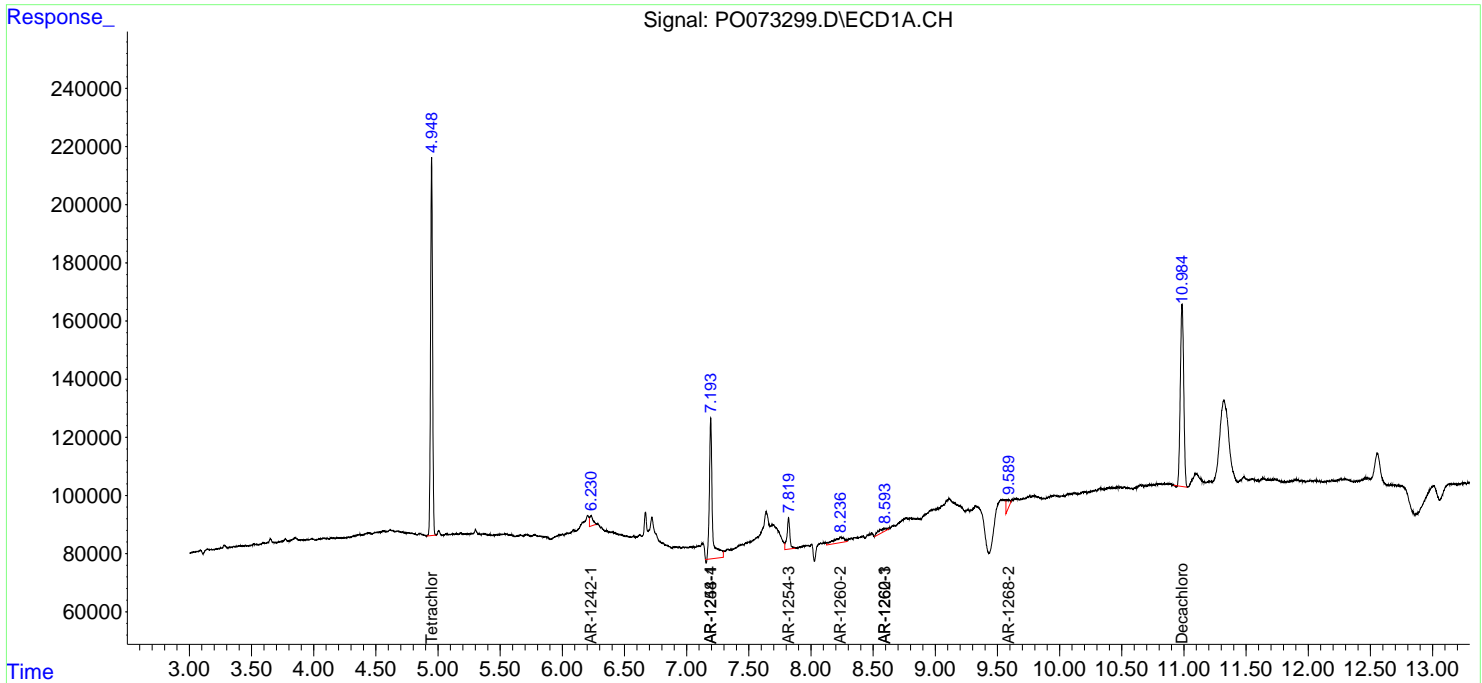
(f)=RT Delta > 1/2 Window (#)=Amounts differ by > 25% (m)=manual int.

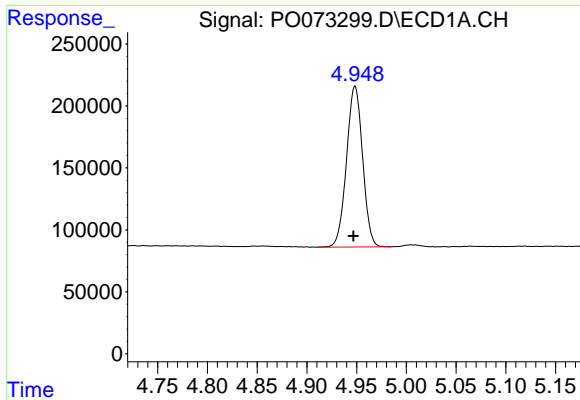
Data Path : Z:\pestpcsrv\HPCHEM1\ECD\_0\Data\PO111820\  
 Data File : PO073299.D  
 Signal(s) : Signal #1: ECD1A.CH Signal #2: ECD2B.CH  
 Acq On : 18 Nov 2020 17:30  
 Operator : DD\AJ  
 Sample : I.BLK  
 Misc :  
 ALS Vial : 2 Sample Multiplier: 1

Instrument :  
 ECD\_O  
 ClientSampled :  
 I.BLK

Integration File signal 1: autoint1.e  
 Integration File signal 2: autoint2.e  
 Quant Time: Nov 18 18:12:00 2020  
 Quant Method : Z:\pestpcsrv\HPCHEM1\ECD\_0\methods\PO111720.M  
 Quant Title : GC EXTRACTABLES  
 QLast Update : Wed Nov 18 05:08:01 2020  
 Response via : Initial Calibration  
 Integrator: ChemStation 6890 Scale Mode: Small noise peaks clipped

Volume Inj. : 2 µl  
 Signal #1 Phase : ZB-MR1 Signal #2 Phase: ZB-MR2  
 Signal #1 Info : 30Mx0.32mmx 0.50µ Signal #2 Info : 30M x 0.32mm x 0.25µm

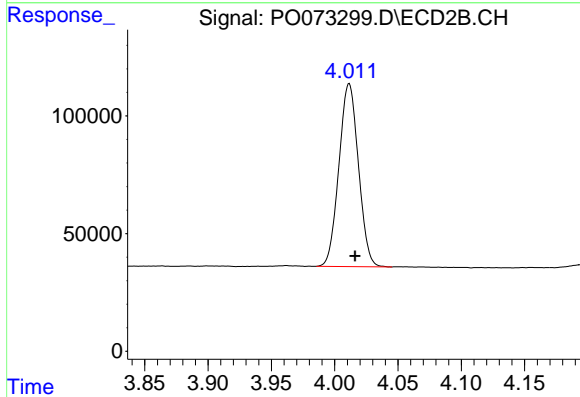




#1 Tetrachloro-m-xylene

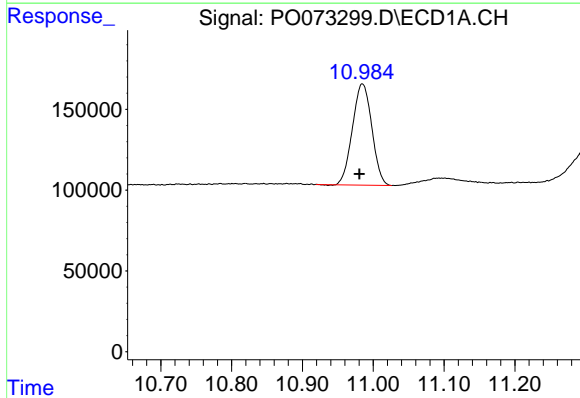
R.T.: 4.948 min  
 Delta R.T.: 0.001 min  
 Response: 1459763  
 Conc: 23.20 ng/ml

Instrument :  
 ECD\_O  
 ClientSampled :  
 I.BLK



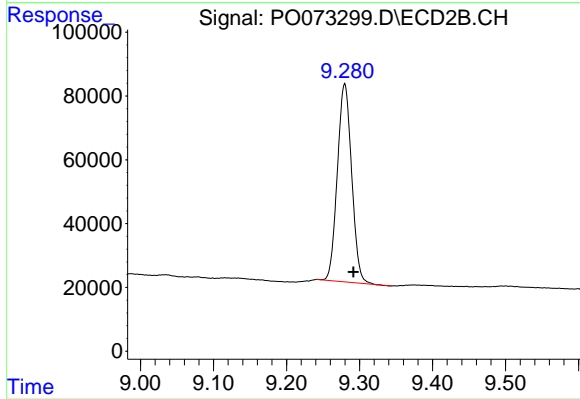
#1 Tetrachloro-m-xylene

R.T.: 4.012 min  
 Delta R.T.: -0.005 min  
 Response: 833015  
 Conc: 23.20 ng/ml



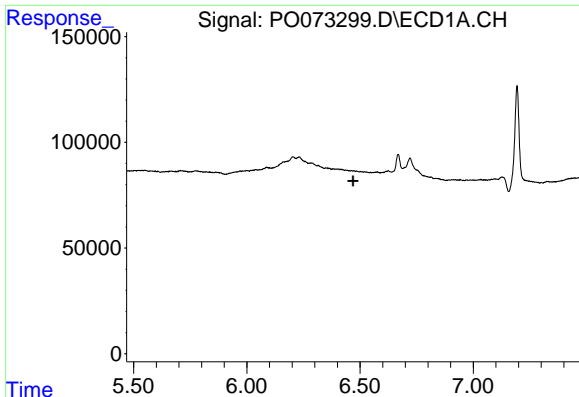
#2 Decachlorobiphenyl

R.T.: 10.985 min  
 Delta R.T.: 0.004 min  
 Response: 1192225  
 Conc: 22.27 ng/ml



#2 Decachlorobiphenyl

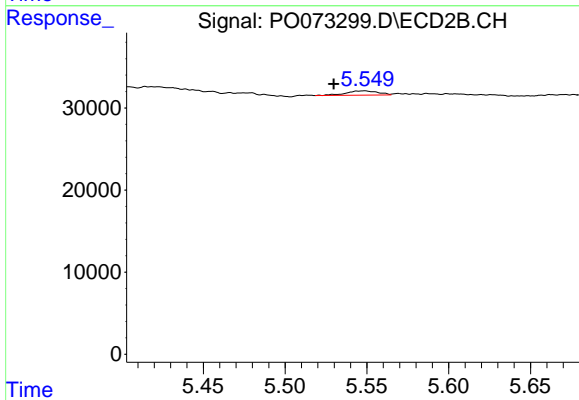
R.T.: 9.280 min  
 Delta R.T.: -0.012 min  
 Response: 844944  
 Conc: 24.18 ng/ml



#6 AR-1016-4

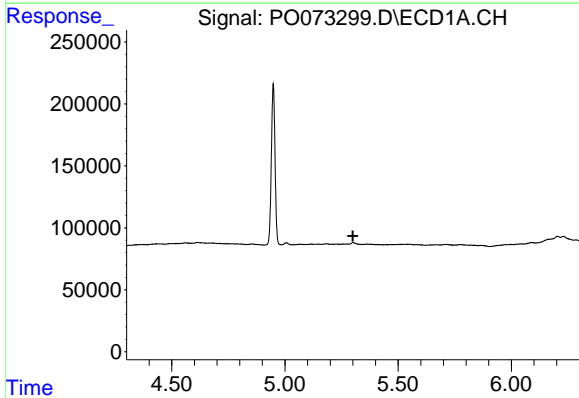
R.T.: 0.000 min  
 Exp R.T.: 6.469 min  
 Response: 0  
 Conc: N.D.

Instrument :  
 ECD\_O  
 ClientSampled :  
 I.BLK



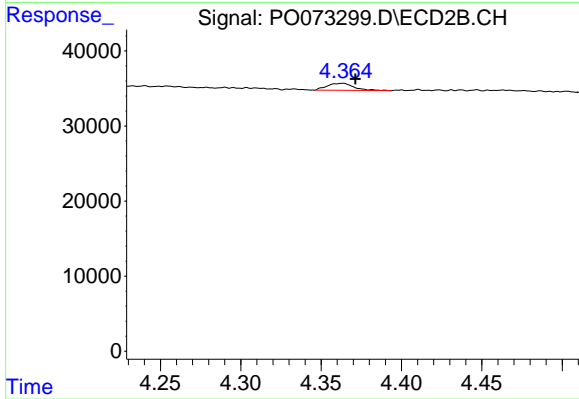
#6 AR-1016-4

R.T.: 5.549 min  
 Delta R.T.: 0.019 min  
 Response: 7119  
 Conc: 7.86 ng/ml



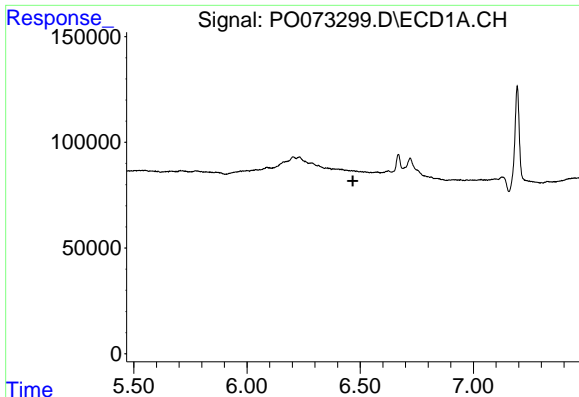
#9 AR-1221-2

R.T.: 0.000 min  
 Exp R.T.: 5.300 min  
 Response: 0  
 Conc: N.D.



#9 AR-1221-2

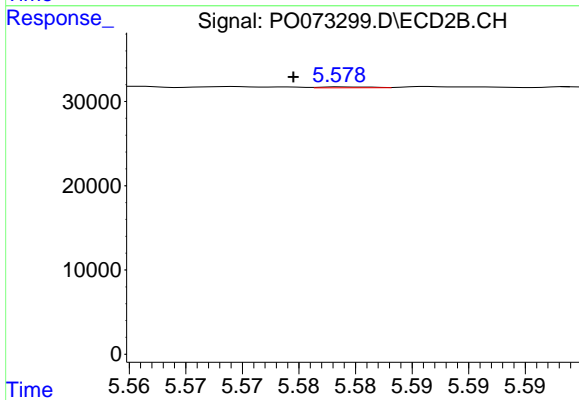
R.T.: 4.364 min  
 Delta R.T.: -0.008 min  
 Response: 10949  
 Conc: 33.53 ng/ml



#14 AR-1232-4

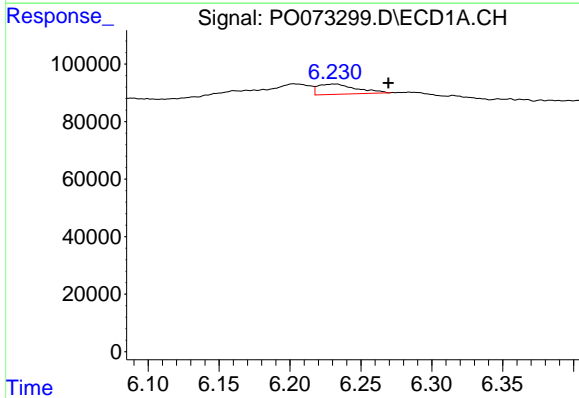
R.T.: 0.000 min  
 Exp R.T.: 6.468 min  
 Response: 0  
 Conc: N.D.

Instrument :  
 ECD\_O  
 ClientSampled :  
 I.BLK



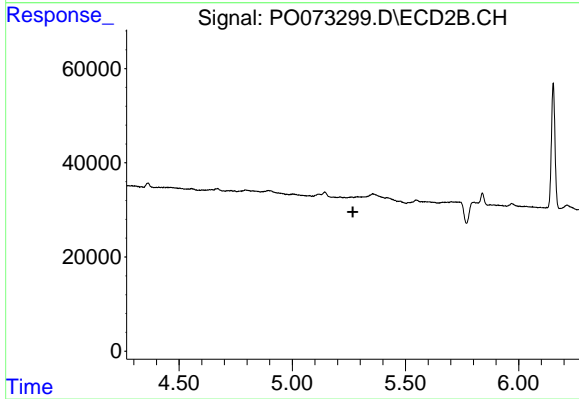
#14 AR-1232-4

R.T.: 5.579 min  
 Delta R.T.: 0.004 min  
 Response: 351  
 Conc: 0.80 ng/ml



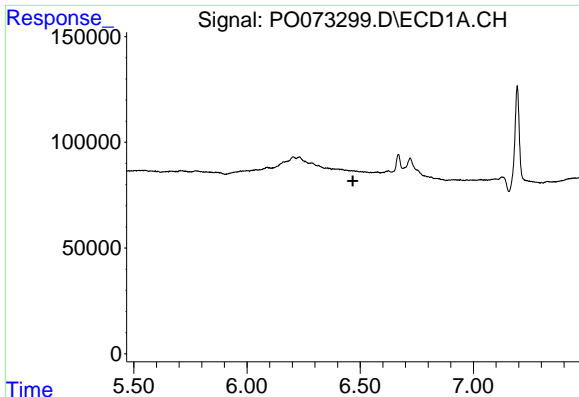
#16 AR-1242-1

R.T.: 6.232 min  
 Delta R.T.: -0.038 min  
 Response: 66222  
 Conc: 31.11 ng/ml



#16 AR-1242-1

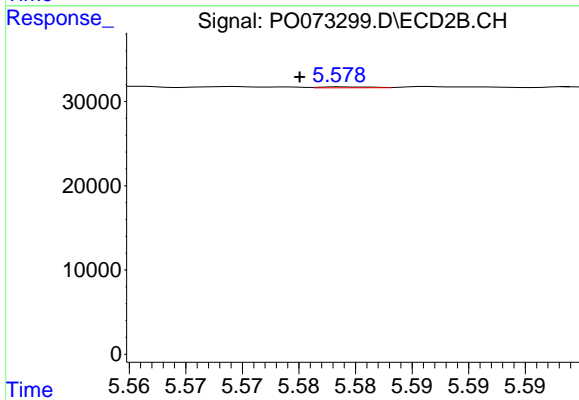
R.T.: 0.000 min  
 Exp R.T.: 5.268 min  
 Response: 0  
 Conc: N.D.



#19 AR-1242-4

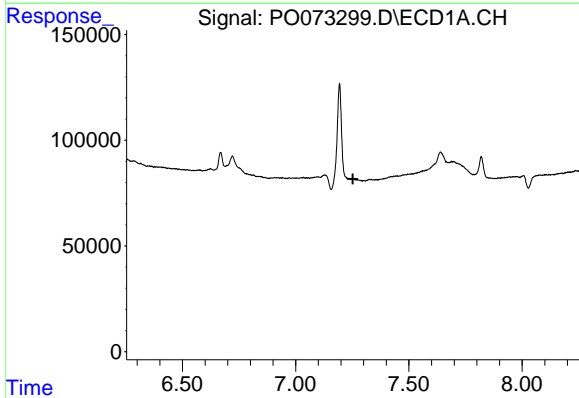
R.T.: 0.000 min  
 Exp R.T.: 6.468 min  
 Response: 0  
 Conc: N.D.

Instrument :  
 ECD\_O  
 ClientSampleId :  
 I.BLK



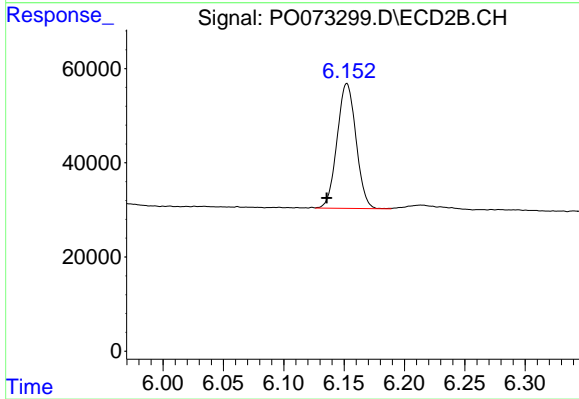
#19 AR-1242-4

R.T.: 5.579 min  
 Delta R.T.: 0.004 min  
 Response: 351  
 Conc: 0.40 ng/ml



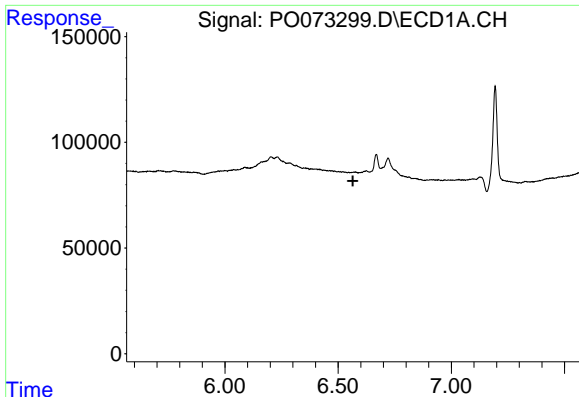
#20 AR-1242-5

R.T.: 0.000 min  
 Exp R.T.: 7.253 min  
 Response: 0  
 Conc: N.D.



#20 AR-1242-5

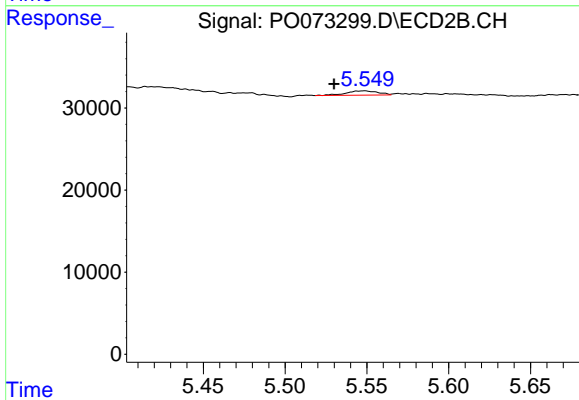
R.T.: 6.152 min  
 Delta R.T.: 0.017 min  
 Response: 290070  
 Conc: 248.64 ng/ml



#22 AR-1248-2

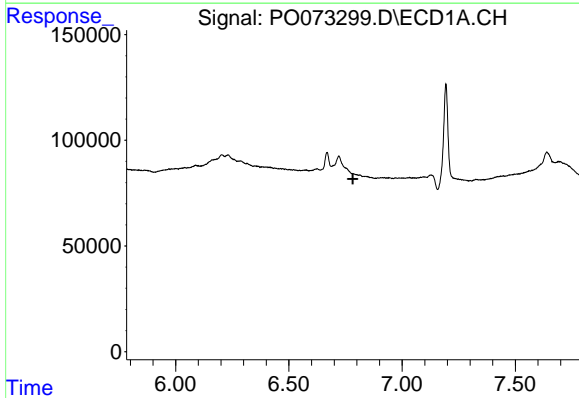
R.T.: 0.000 min  
 Exp R.T. : 6.565 min  
 Response: 0  
 Conc: N.D.

Instrument :  
 ECD\_O  
 ClientSampled :  
 I.BLK



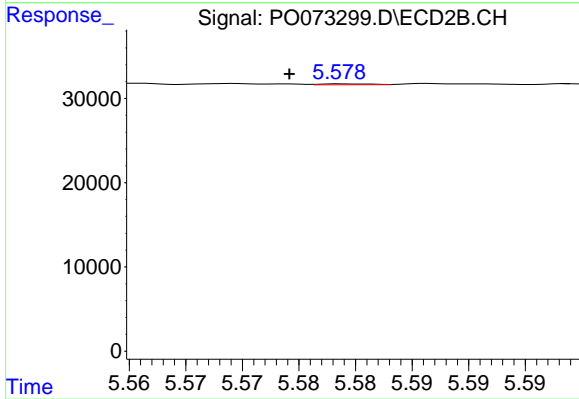
#22 AR-1248-2

R.T.: 5.549 min  
 Delta R.T.: 0.019 min  
 Response: 7119  
 Conc: 5.62 ng/ml



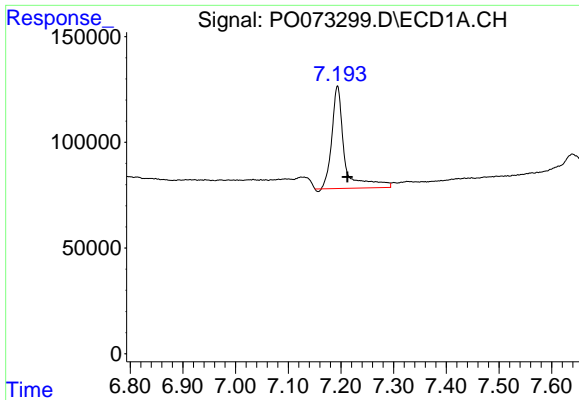
#23 AR-1248-3

R.T.: 0.000 min  
 Exp R.T. : 6.783 min  
 Response: 0  
 Conc: N.D.



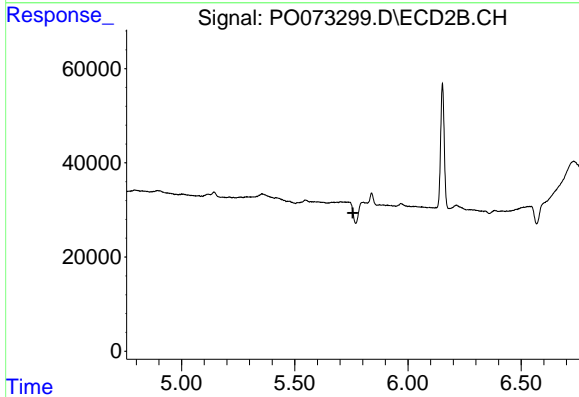
#23 AR-1248-3

R.T.: 5.579 min  
 Delta R.T.: 0.005 min  
 Response: 351  
 Conc: 0.27 ng/ml

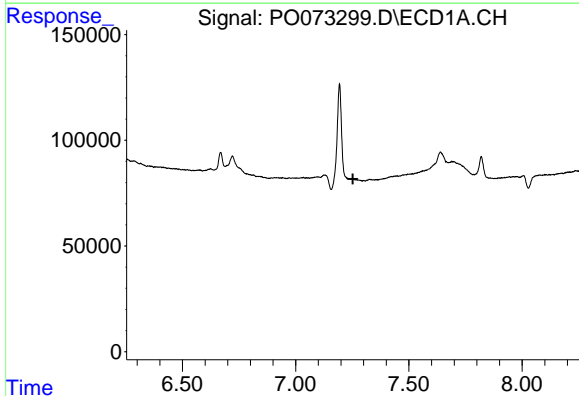


#24 AR-1248-4  
 R.T.: 7.194 min  
 Delta R.T.: -0.019 min  
 Response: 804288  
 Conc: 270.55 ng/ml

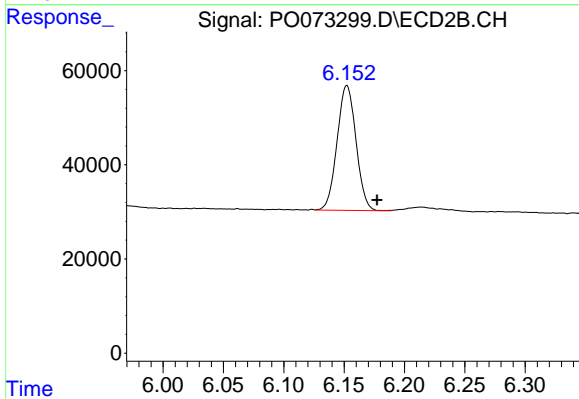
Instrument :  
 ECD\_O  
 ClientSampled :  
 I.BLK



#24 AR-1248-4  
 R.T.: 0.000 min  
 Exp R.T. : 5.757 min  
 Response: 0  
 Conc: N.D.

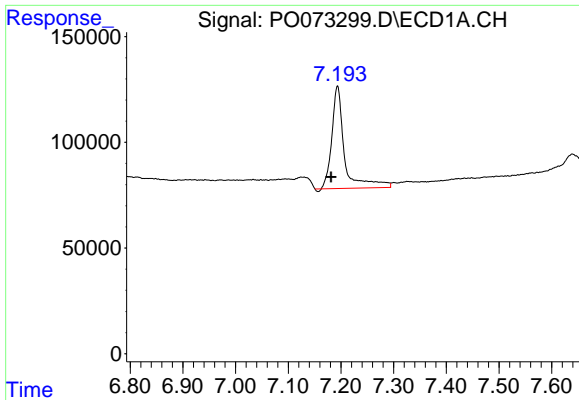


#25 AR-1248-5  
 R.T.: 0.000 min  
 Exp R.T. : 7.252 min  
 Response: 0  
 Conc: N.D.



#25 AR-1248-5  
 R.T.: 6.152 min  
 Delta R.T.: -0.025 min  
 Response: 290070  
 Conc: 174.92 ng/ml

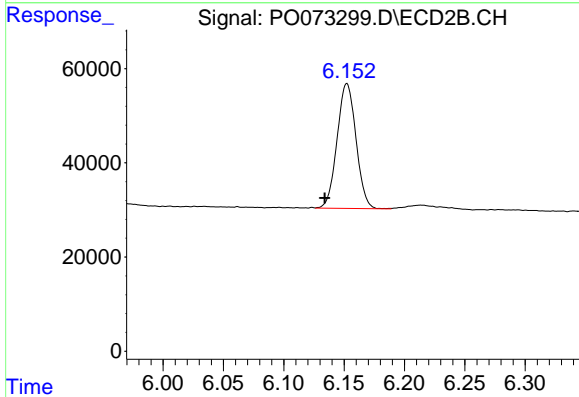




#26 AR-1254-1

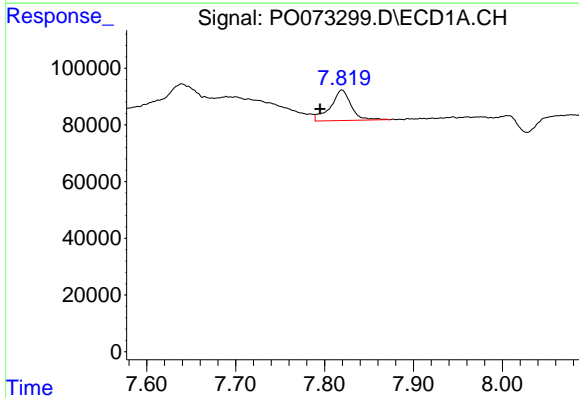
R.T.: 7.194 min  
 Delta R.T.: 0.012 min  
 Response: 804288  
 Conc: 273.11 ng/ml

Instrument :  
 ECD\_O  
 ClientSampleId :  
 I.BLK



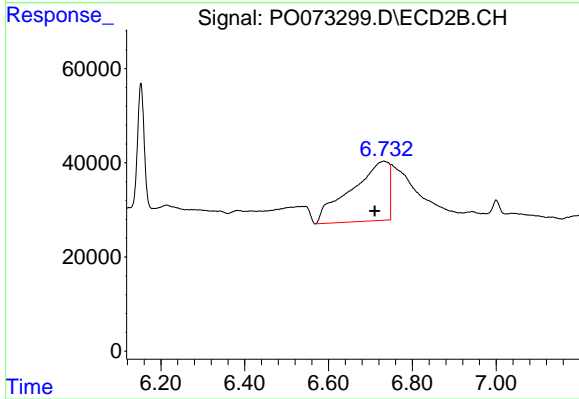
#26 AR-1254-1

R.T.: 6.152 min  
 Delta R.T.: 0.018 min  
 Response: 290070  
 Conc: 117.96 ng/ml



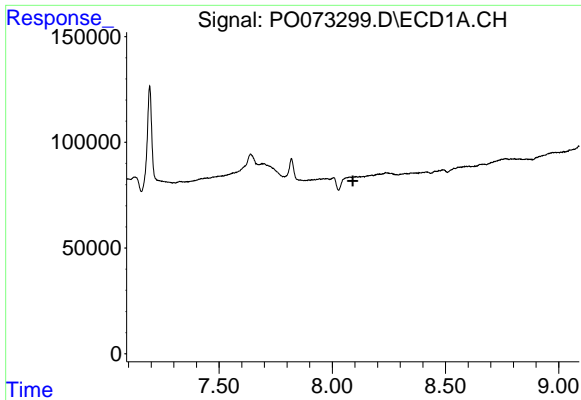
#28 AR-1254-3

R.T.: 7.820 min  
 Delta R.T.: 0.024 min  
 Response: 172948  
 Conc: 36.17 ng/ml



#28 AR-1254-3

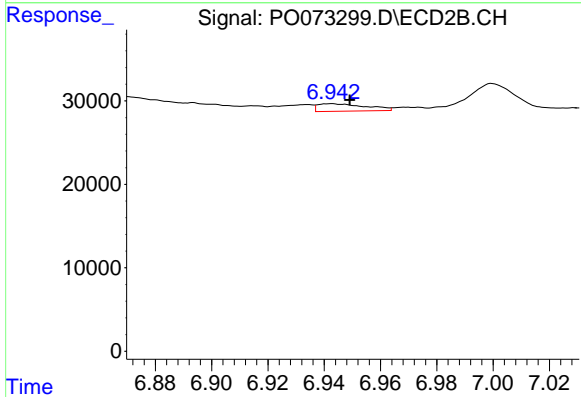
R.T.: 6.732 min  
 Delta R.T.: 0.022 min  
 Response: 790857  
 Conc: 216.62 ng/ml



#29 AR-1254-4

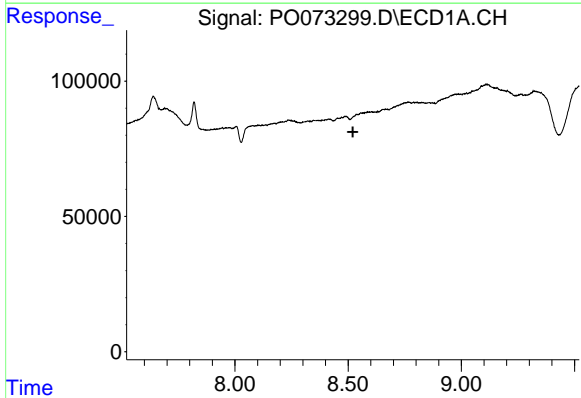
R.T.: 8.078 min  
 Delta R.T.: -0.013 min  
 Response: -23226  
 Conc: N.D.

Instrument :  
 ECD\_O  
 ClientSampled :  
 I.BLK



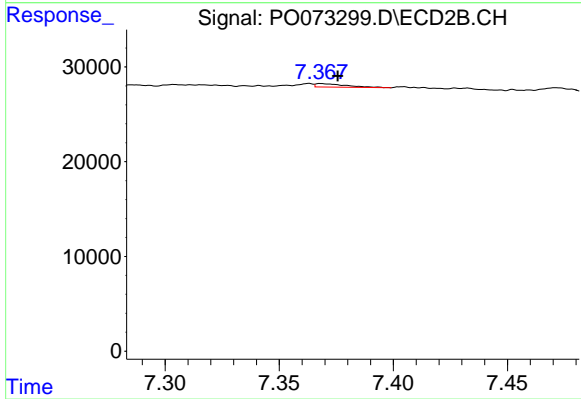
#29 AR-1254-4

R.T.: 6.943 min  
 Delta R.T.: -0.006 min  
 Response: 10614  
 Conc: 4.44 ng/ml



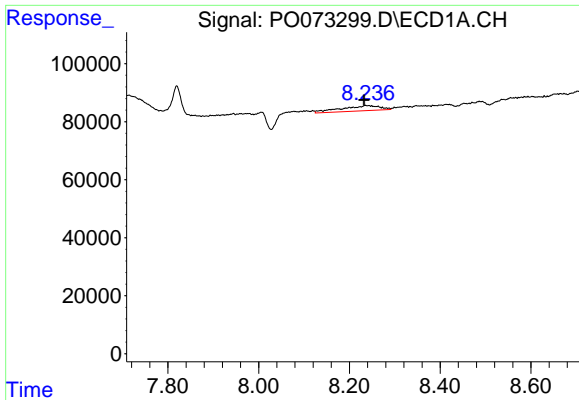
#30 AR-1254-5

R.T.: 0.000 min  
 Exp R.T. : 8.521 min  
 Response: 0  
 Conc: N.D.



#30 AR-1254-5

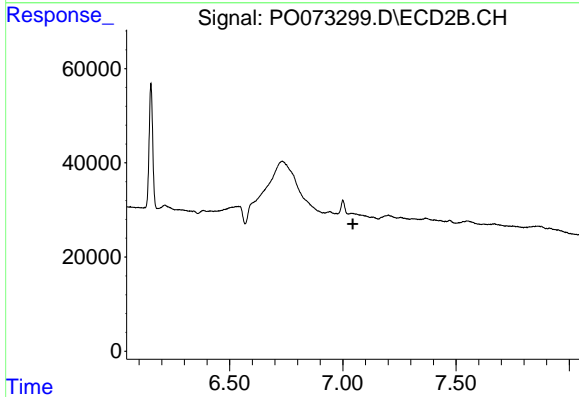
R.T.: 7.368 min  
 Delta R.T.: -0.007 min  
 Response: 3369  
 Conc: 1.02 ng/ml



#32 AR-1260-2

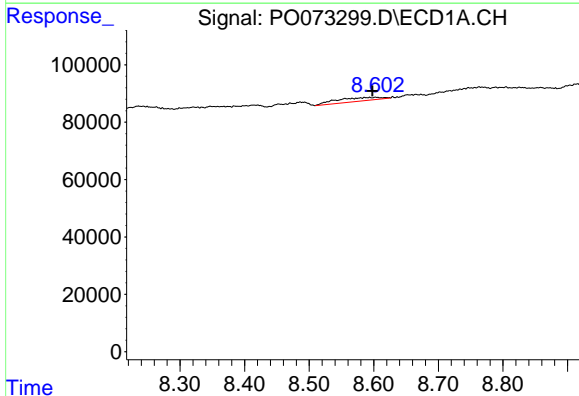
R.T.: 8.236 min  
 Delta R.T.: 0.003 min  
 Response: 108737  
 Conc: 25.38 ng/ml

Instrument :  
 ECD\_O  
 ClientSampleId :  
 I.BLK



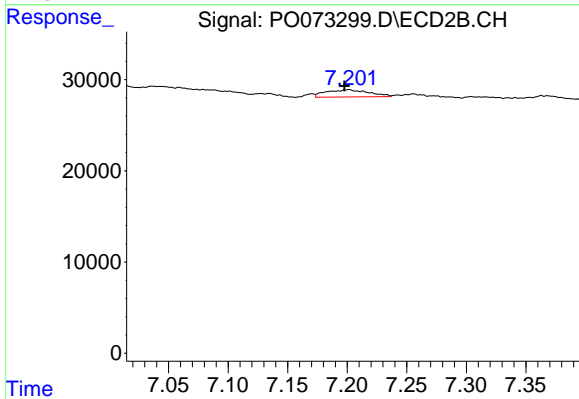
#32 AR-1260-2

R.T.: 0.000 min  
 Exp R.T. : 7.044 min  
 Response: 0  
 Conc: N.D.



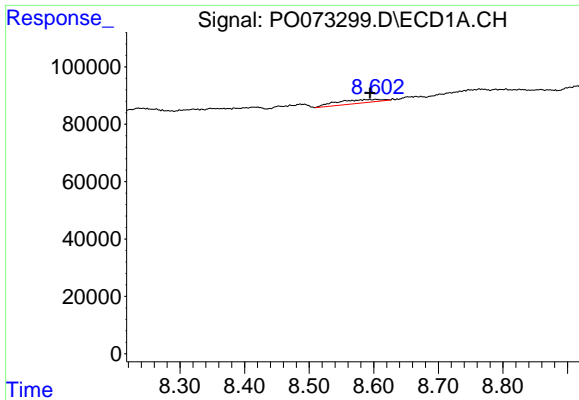
#33 AR-1260-3

R.T.: 8.594 min  
 Delta R.T.: -0.004 min  
 Response: 58868  
 Conc: 18.19 ng/ml



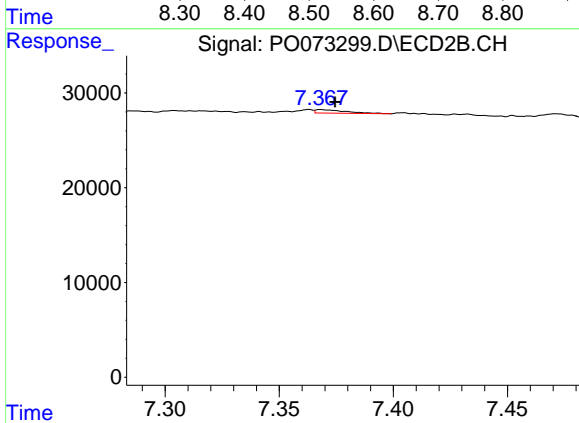
#33 AR-1260-3

R.T.: 7.202 min  
 Delta R.T.: 0.004 min  
 Response: 19683  
 Conc: 7.99 ng/ml

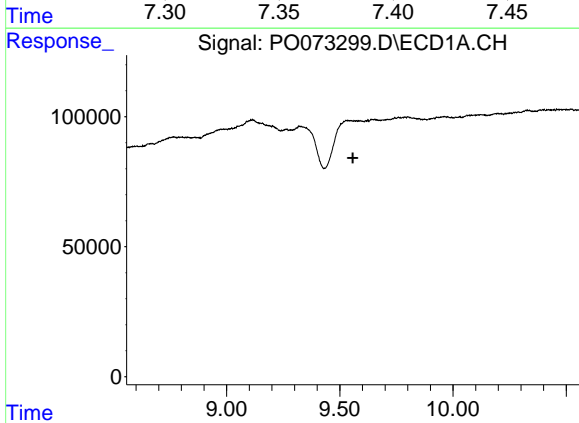


#36 AR-1262-1  
 R.T.: 8.594 min  
 Delta R.T.: 0.000 min  
 Response: 58868  
 Conc: 11.91 ng/ml

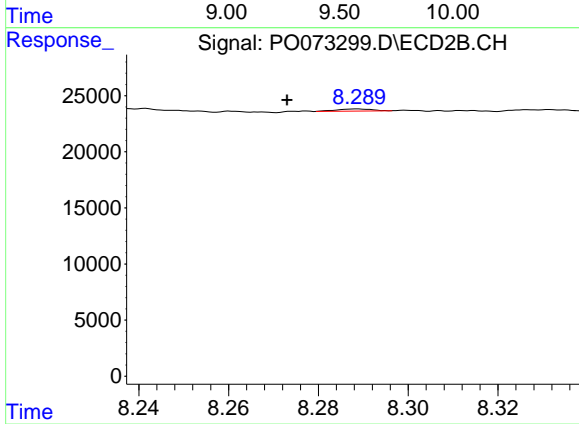
Instrument :  
 ECD\_O  
 ClientSampled :  
 I.BLK



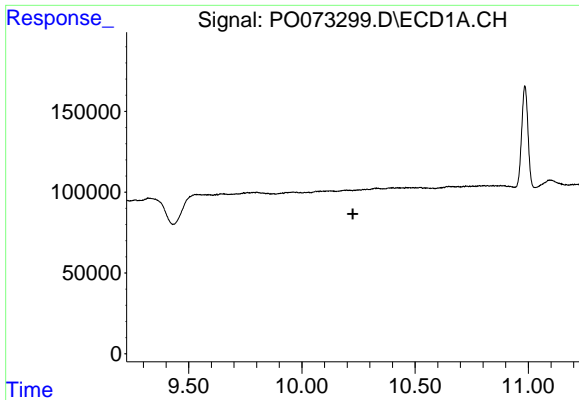
#36 AR-1262-1  
 R.T.: 7.368 min  
 Delta R.T.: -0.006 min  
 Response: 3369  
 Conc: 2.10 ng/ml



#39 AR-1262-4  
 R.T.: 0.000 min  
 Exp R.T. : 9.558 min  
 Response: 0  
 Conc: N.D.



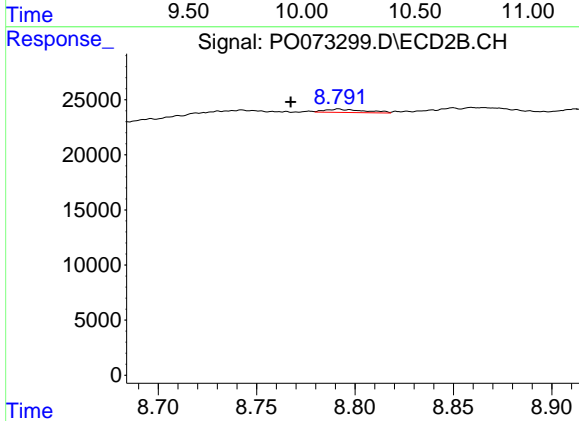
#39 AR-1262-4  
 R.T.: 8.289 min  
 Delta R.T.: 0.016 min  
 Response: 999  
 Conc: 0.26 ng/ml



#40 AR-1262-5

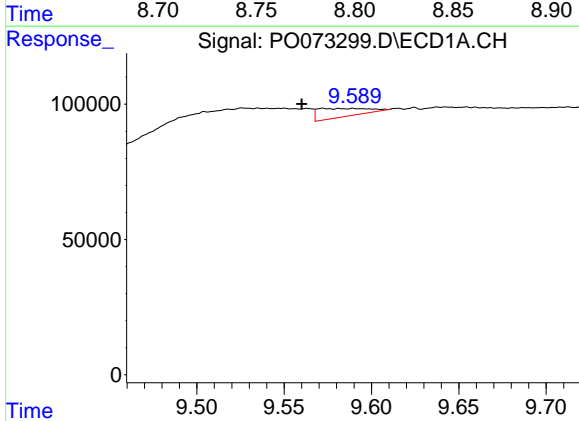
R.T.: 0.000 min  
 Exp R.T.: 10.225 min  
 Response: 0  
 Conc: N.D.

Instrument :  
 ECD\_O  
 ClientSampled :  
 I.BLK



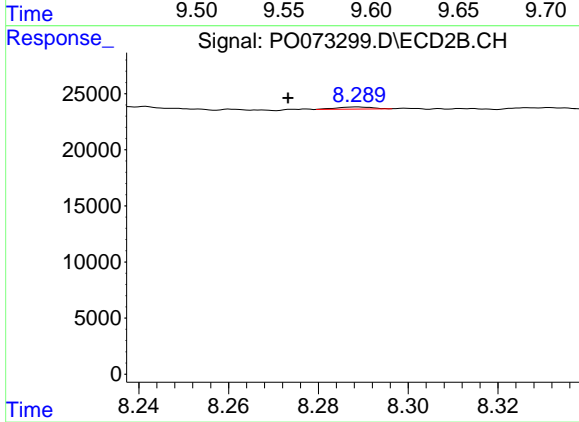
#40 AR-1262-5

R.T.: 8.792 min  
 Delta R.T.: 0.024 min  
 Response: 4307  
 Conc: 2.50 ng/ml



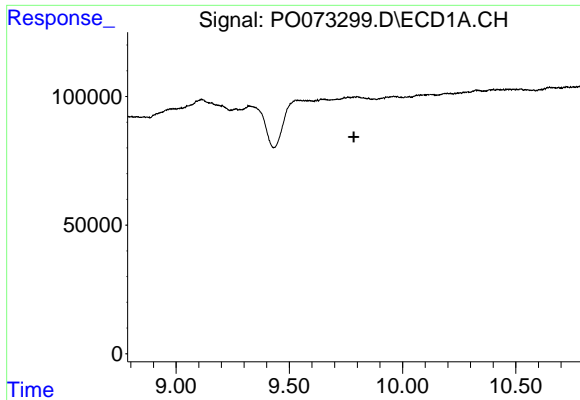
#42 AR-1268-2

R.T.: 9.590 min  
 Delta R.T.: 0.029 min  
 Response: 70663  
 Conc: 8.33 ng/ml



#42 AR-1268-2

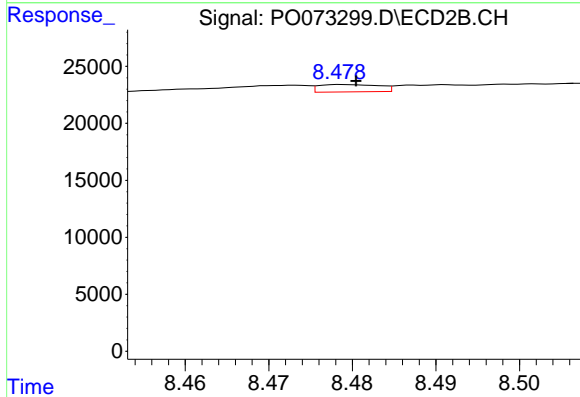
R.T.: 8.289 min  
 Delta R.T.: 0.015 min  
 Response: 999  
 Conc: 0.18 ng/ml



#43 AR-1268-3

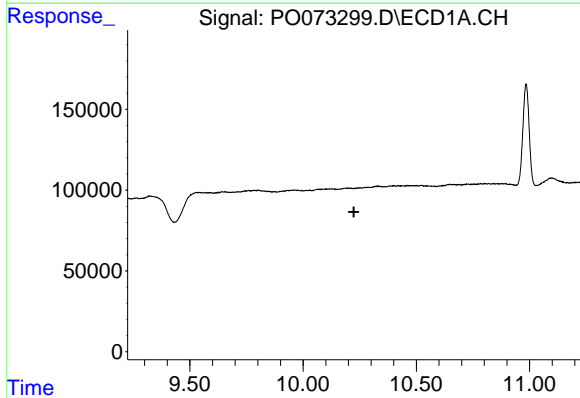
R.T.: 0.000 min  
 Exp R.T. : 9.785 min  
 Response: 0  
 Conc: N.D.

Instrument :  
 ECD\_O  
 ClientSampleId :  
 I.BLK



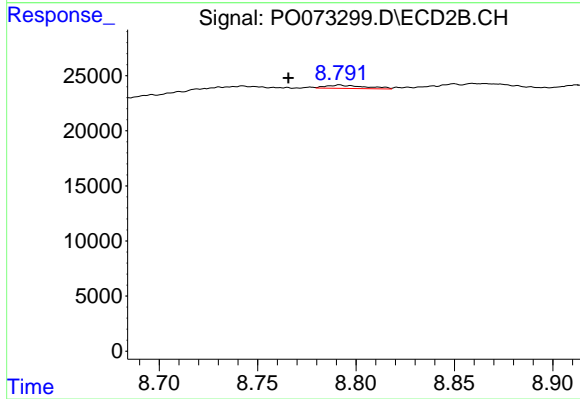
#43 AR-1268-3

R.T.: 8.479 min  
 Delta R.T.: -0.002 min  
 Response: 3241  
 Conc: 0.68 ng/ml



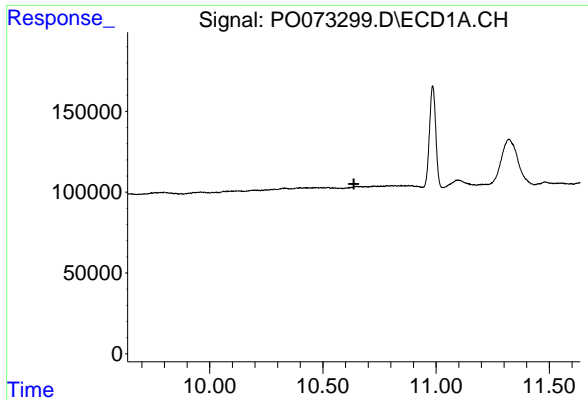
#44 AR-1268-4

R.T.: 0.000 min  
 Exp R.T. : 10.224 min  
 Response: 0  
 Conc: N.D.



#44 AR-1268-4

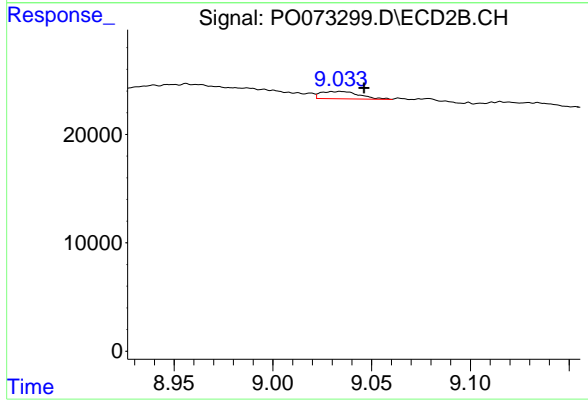
R.T.: 8.792 min  
 Delta R.T.: 0.026 min  
 Response: 4307  
 Conc: 2.21 ng/ml



#45 AR-1268-5

R.T.: 0.000 min  
Exp R.T.: 10.637 min  
Response: 0  
Conc: N.D.

Instrument :  
ECD\_O  
ClientSampleId :  
I.BLK



#45 AR-1268-5

R.T.: 9.034 min  
Delta R.T.: -0.012 min  
Response: 9086  
Conc: 0.66 ng/ml