

Data Path : Z:\pestpcbsrv\HPCHEM1\ECD_0\Data\PO112019\
 Data File : PO063923.D
 Signal(s) : Signal #1: ECD1A.CH Signal #2: ECD2B.CH
 Acq On : 20 Nov 2019 16:03
 Operator : SM/AJ
 Sample : K5927-10
 Misc :
 ALS Vial : 19 Sample Multiplier: 1

Instrument :
 ECD_0
 ClientSampleId :
 B-8

Integration File signal 1: autoint1.e
 Integration File signal 2: autoint2.e
 Quant Time: Nov 20 16:21:11 2019
 Quant Method : Z:\pestpcbsrv\HPCHEM1\ECD_0\methods\PO111419.M
 Quant Title : GC EXTRACTABLES
 QLast Update : Fri Nov 15 01:29:03 2019
 Response via : Initial Calibration
 Integrator: ChemStation 6890 Scale Mode: Small noise peaks clipped

Volume Inj. : 2 µl
 Signal #1 Phase : ZB-MR2 Signal #2 Phase: ZB-MR2
 Signal #1 Info : 30Mx0.32mmx 0.50µ Signal #2 Info : 30M x 0.32mm x 0.25µm

Compound	RT#1	RT#2	Resp#1	Resp#2	ng/ml	ng/ml

System Monitoring Compounds						
1) SA Tetrachlo...	4.315	3.566	791066	615927	25.873	27.730
2) SA Decachlor...	9.940	8.535	784525	616783	19.307	21.089
Target Compounds						
3) L1 AR-1016-1	5.415	4.670	26527	21023	19.100	20.515
4) L1 AR-1016-2	0.000	4.670	0	21023	N.D.	15.430 #
9) L2 AR-1221-2	4.618	0.000	12080	0	38.515	N.D. #
10) L2 AR-1221-3	4.618	0.000	12080	0	12.737	N.D. #
11) L3 AR-1232-1	4.618	0.000	12080	0	9.082	N.D. #
12) L3 AR-1232-2	0.000	4.670	0	21023	N.D.	20.863 #
16) L4 AR-1242-1	5.415	4.670	26527	21023	25.072	26.650
17) L4 AR-1242-2	0.000	4.670	0	21023	N.D.	19.859 #
21) L5 AR-1248-1	5.415	4.670	26527	21023	30.374	32.624
28) L6 AR-1254-3	6.914	0.000	12255	0	3.904	N.D. #
29) L6 AR-1254-4	0.000	6.181	0	33591	N.D.	18.943 #
31) L7 AR-1260-1	7.069	6.119	25551	37016	12.661	23.571 #

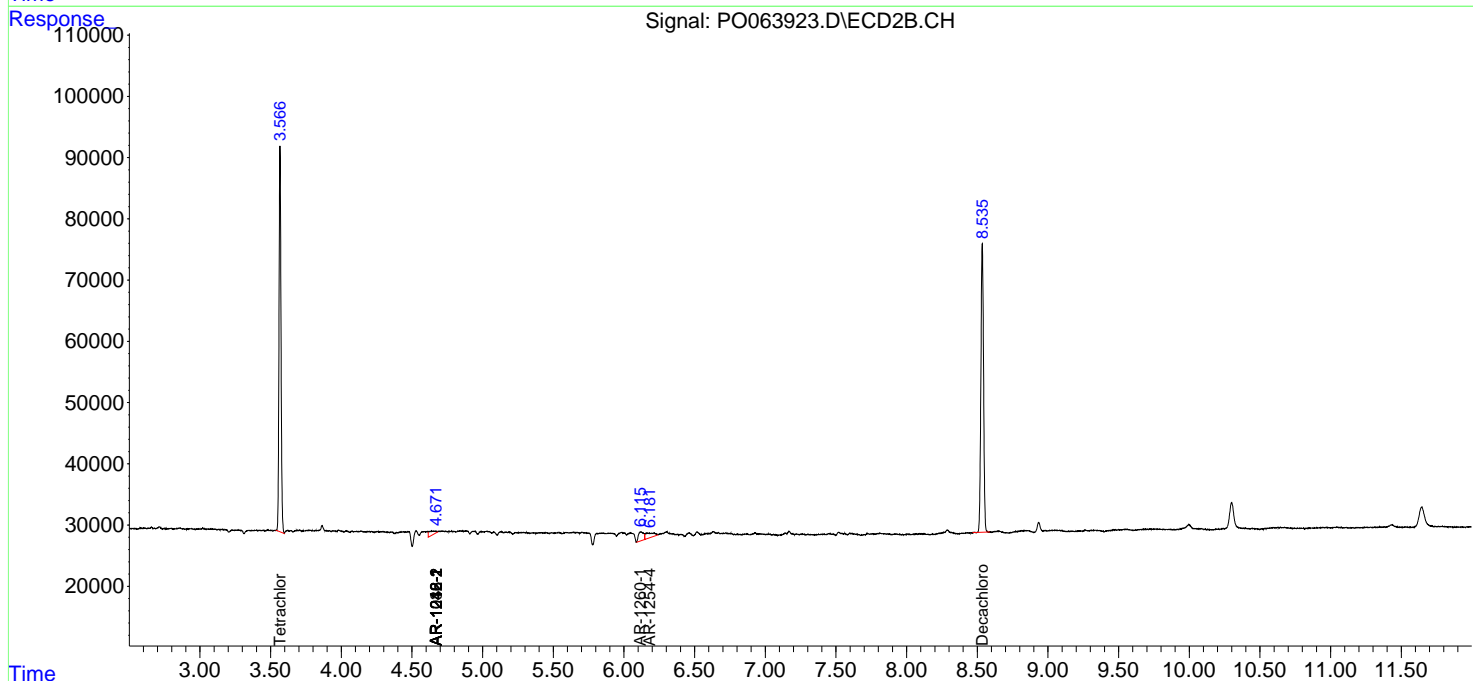
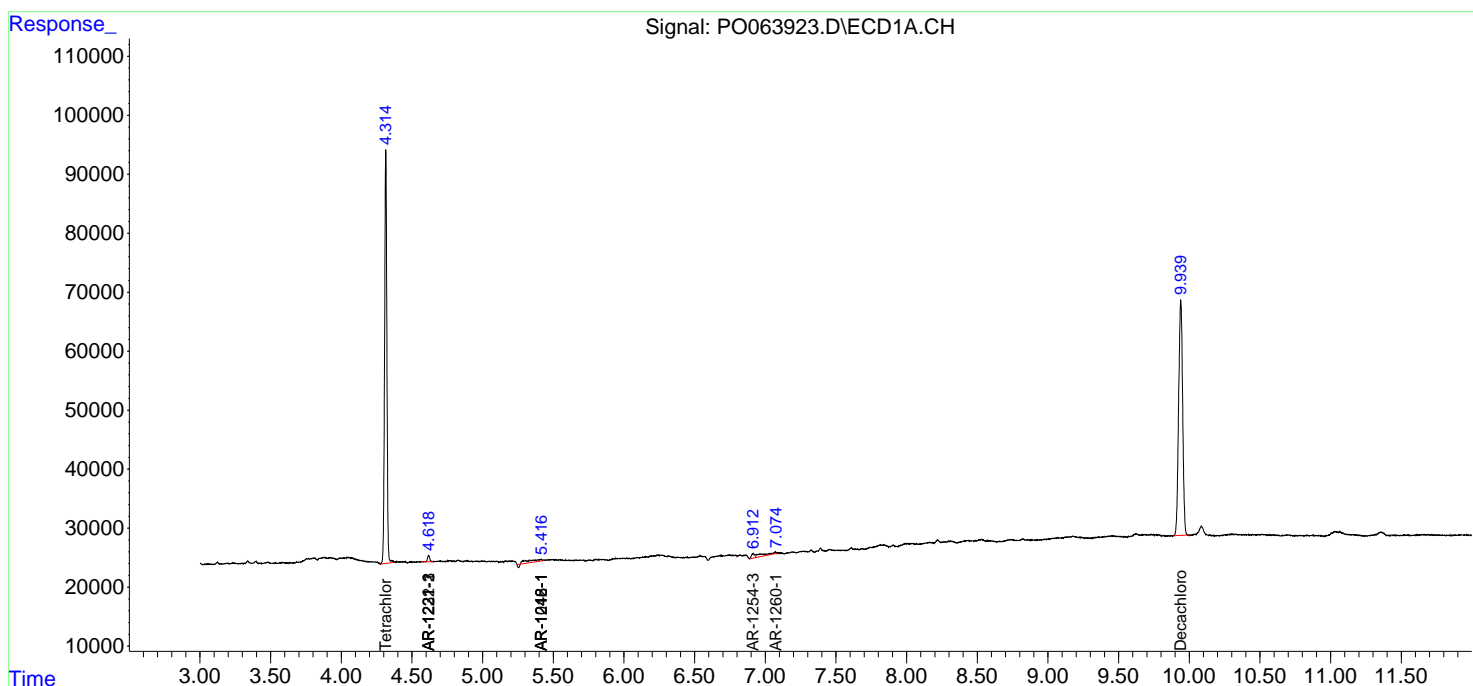
(f)=RT Delta > 1/2 Window (#)=Amounts differ by > 25% (m)=manual int.

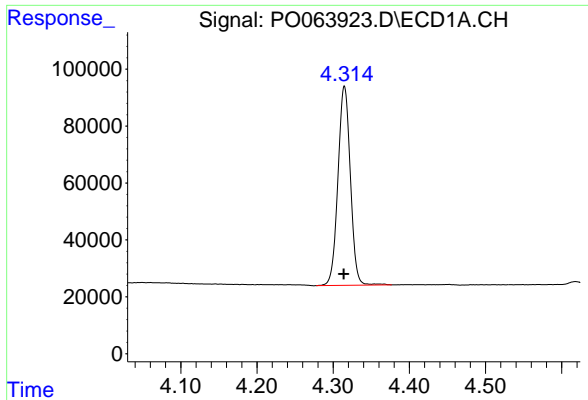
Data Path : Z:\pestpcbsrv\HPCHEM1\ECD_0\Data\PO112019\
 Data File : P0063923.D
 Signal(s) : Signal #1: ECD1A.CH Signal #2: ECD2B.CH
 Acq On : 20 Nov 2019 16:03
 Operator : SM/AJ
 Sample : K5927-10
 Misc :
 ALS Vial : 19 Sample Multiplier: 1

Instrument :
 ECD_O
 Client Sampled :
 B-8

Integration File signal 1: autoint1.e
 Integration File signal 2: autoint2.e
 Quant Time: Nov 20 16:21:11 2019
 Quant Method : Z:\pestpcbsrv\HPCHEM1\ECD_0\methods\PO111419.M
 Quant Title : GC EXTRACTABLES
 QLast Update : Fri Nov 15 01:29:03 2019
 Response via : Initial Calibration
 Integrator: ChemStation 6890 Scale Mode: Small noise peaks clipped

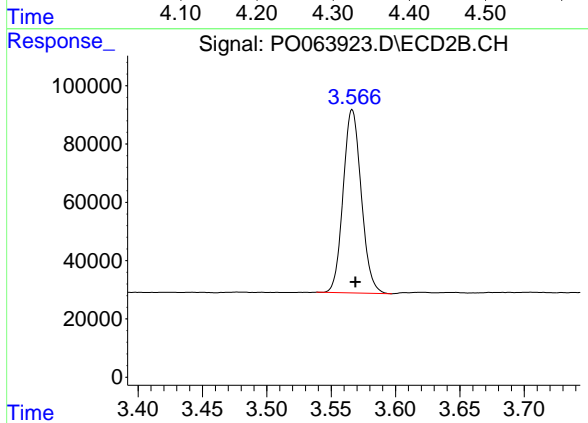
Volume Inj. : 2 µl
 Signal #1 Phase : ZB-MR1 Signal #2 Phase: ZB-MR2
 Signal #1 Info : 30Mx0.32mmx 0.50µ Signal #2 Info : 30M x 0.32mm x 0.25µm



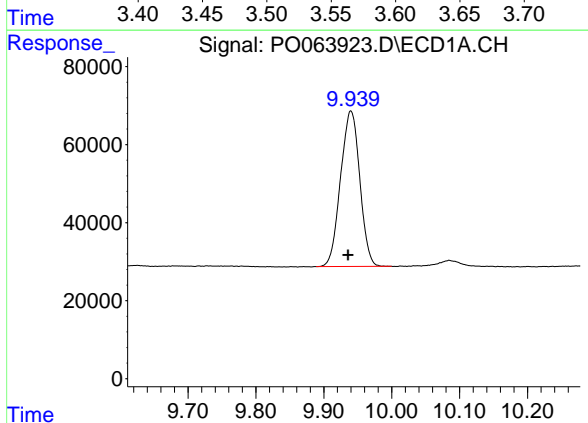


#1 Tetrachloro-m-xylene
R.T.: 4.315 min
Delta R.T.: 0.000 min
Response: 791066
Conc: 25.87 ng/ml

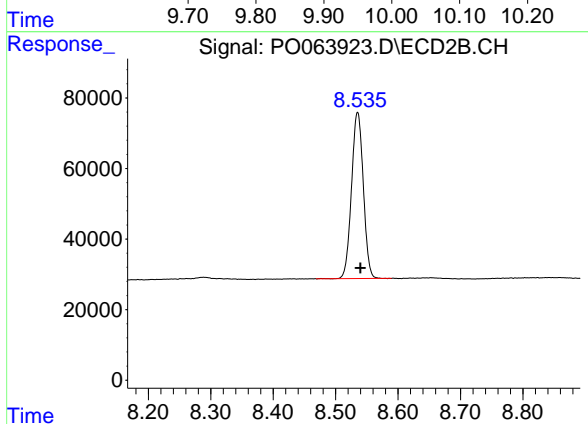
Instrument :
ECD_O
ClientSampled :
B-8



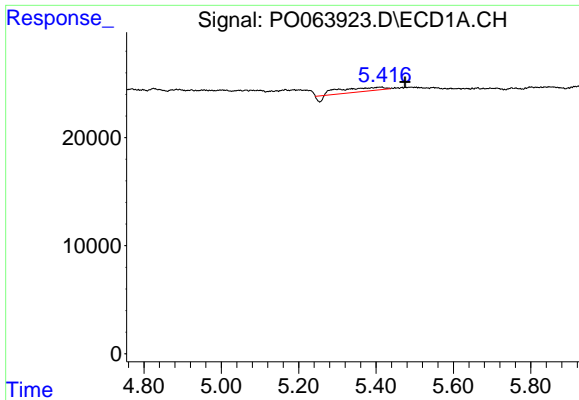
#1 Tetrachloro-m-xylene
R.T.: 3.566 min
Delta R.T.: -0.002 min
Response: 615927
Conc: 27.73 ng/ml



#2 Decachlorobiphenyl
R.T.: 9.940 min
Delta R.T.: 0.004 min
Response: 784525
Conc: 19.31 ng/ml

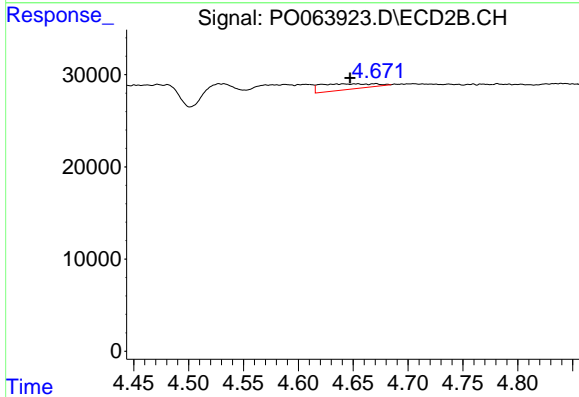


#2 Decachlorobiphenyl
R.T.: 8.535 min
Delta R.T.: -0.004 min
Response: 616783
Conc: 21.09 ng/ml

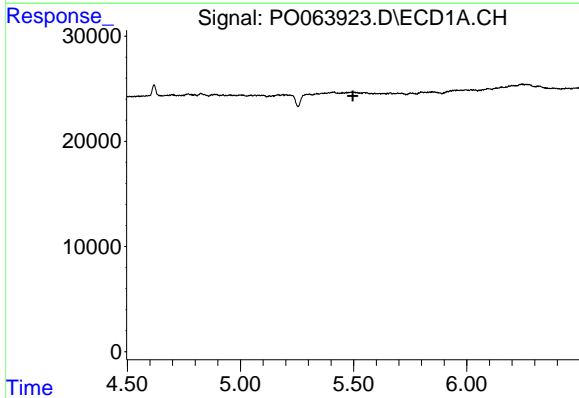


#3 AR-1016-1
 R.T.: 5.415 min
 Delta R.T.: -0.060 min
 Response: 26527
 Conc: 19.10 ng/ml

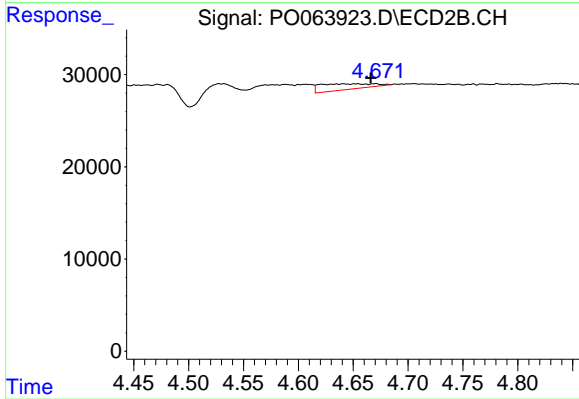
Instrument :
 ECD_O
 ClientSampled :
 B-8



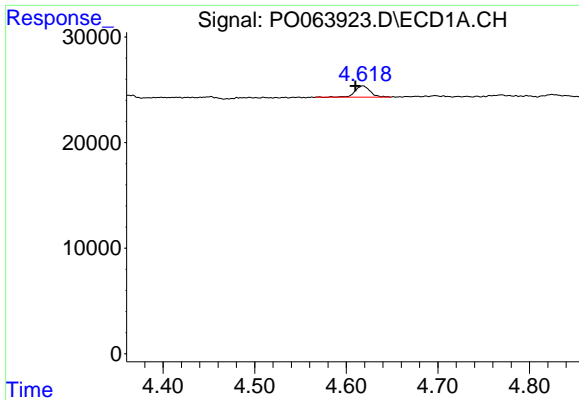
#3 AR-1016-1
 R.T.: 4.670 min
 Delta R.T.: 0.023 min
 Response: 21023
 Conc: 20.51 ng/ml



#4 AR-1016-2
 R.T.: 0.000 min
 Exp R.T. : 5.497 min
 Response: 0
 Conc: N.D.

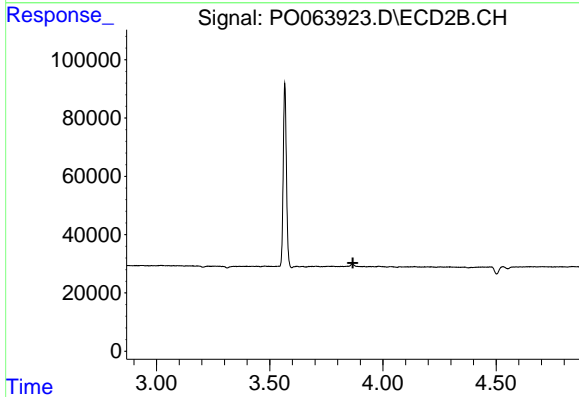


#4 AR-1016-2
 R.T.: 4.670 min
 Delta R.T.: 0.004 min
 Response: 21023
 Conc: 15.43 ng/ml

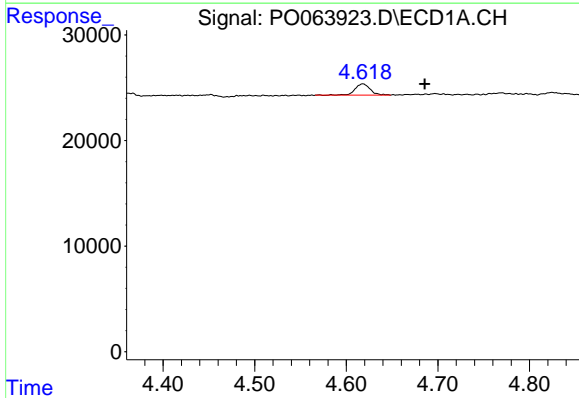


#9 AR-1221-2
 R.T.: 4.618 min
 Delta R.T.: 0.008 min
 Response: 12080
 Conc: 38.51 ng/ml

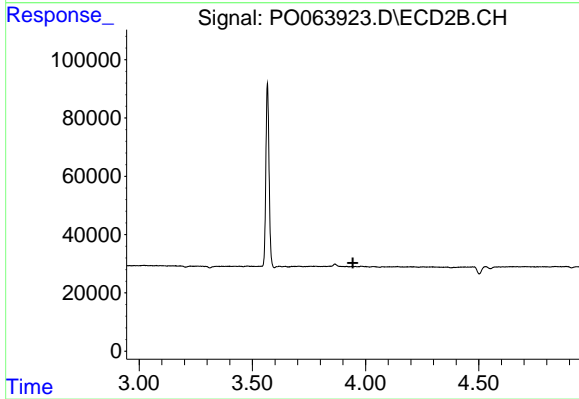
Instrument :
 ECD_O
 ClientSampled :
 B-8



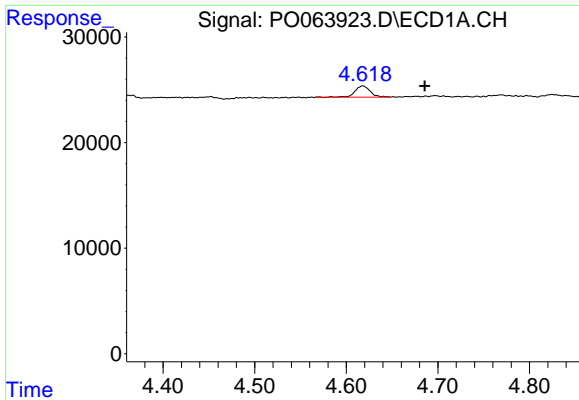
#9 AR-1221-2
 R.T.: 0.000 min
 Exp R.T. : 3.868 min
 Response: 0
 Conc: N.D.



#10 AR-1221-3
 R.T.: 4.618 min
 Delta R.T.: -0.067 min
 Response: 12080
 Conc: 12.74 ng/ml

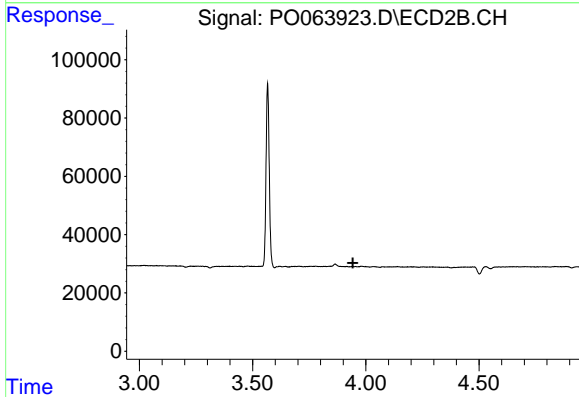


#10 AR-1221-3
 R.T.: 0.000 min
 Exp R.T. : 3.944 min
 Response: 0
 Conc: N.D.

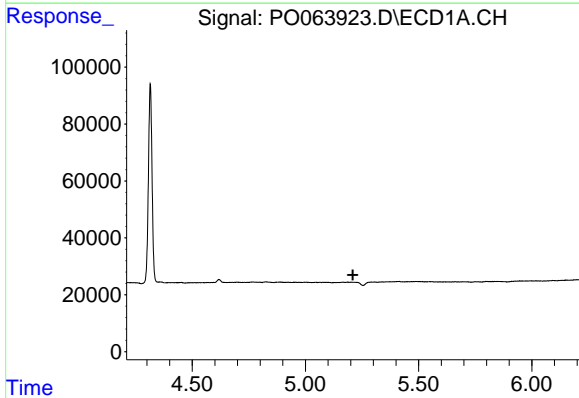


#11 AR-1232-1
 R.T.: 4.618 min
 Delta R.T.: -0.068 min
 Response: 12080
 Conc: 9.08 ng/ml

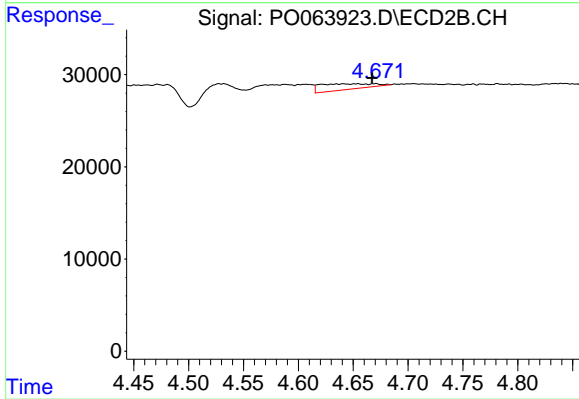
Instrument :
 ECD_O
 ClientSampled :
 B-8



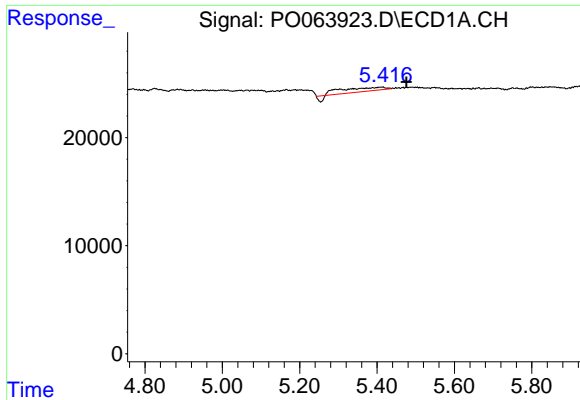
#11 AR-1232-1
 R.T.: 0.000 min
 Exp R.T. : 3.943 min
 Response: 0
 Conc: N.D.



#12 AR-1232-2
 R.T.: 0.000 min
 Exp R.T. : 5.210 min
 Response: 0
 Conc: N.D.

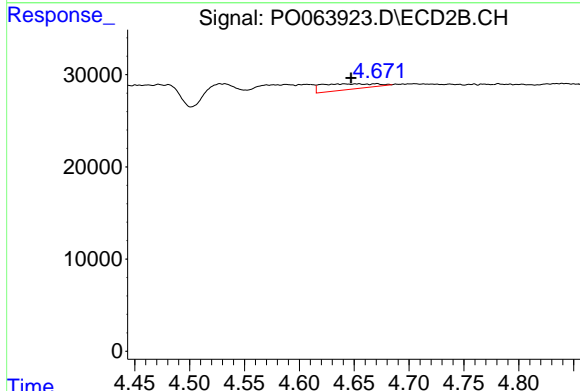


#12 AR-1232-2
 R.T.: 4.670 min
 Delta R.T.: 0.003 min
 Response: 21023
 Conc: 20.86 ng/ml

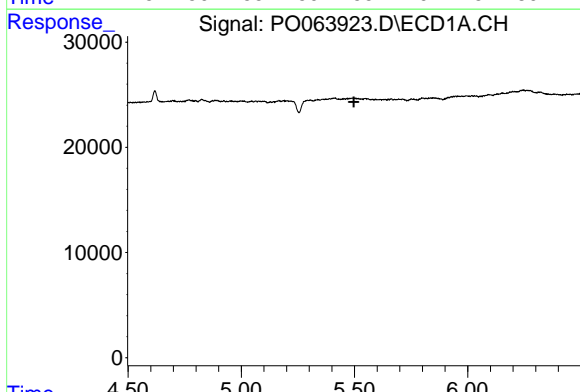


#16 AR-1242-1
 R.T.: 5.415 min
 Delta R.T.: -0.060 min
 Response: 26527
 Conc: 25.07 ng/ml

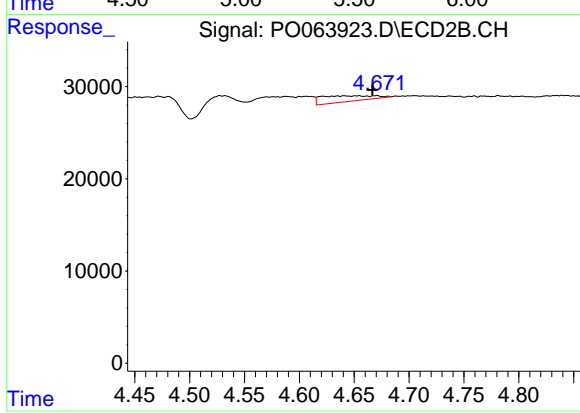
Instrument :
 ECD_O
 ClientSampleId :
 B-8



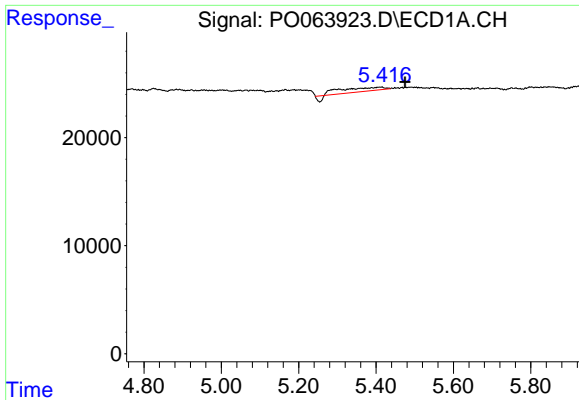
#16 AR-1242-1
 R.T.: 4.670 min
 Delta R.T.: 0.023 min
 Response: 21023
 Conc: 26.65 ng/ml



#17 AR-1242-2
 R.T.: 0.000 min
 Exp R.T. : 5.497 min
 Response: 0
 Conc: N.D.



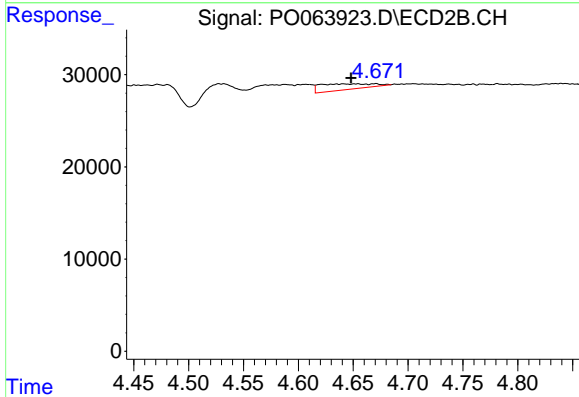
#17 AR-1242-2
 R.T.: 4.670 min
 Delta R.T.: 0.004 min
 Response: 21023
 Conc: 19.86 ng/ml



#21 AR-1248-1

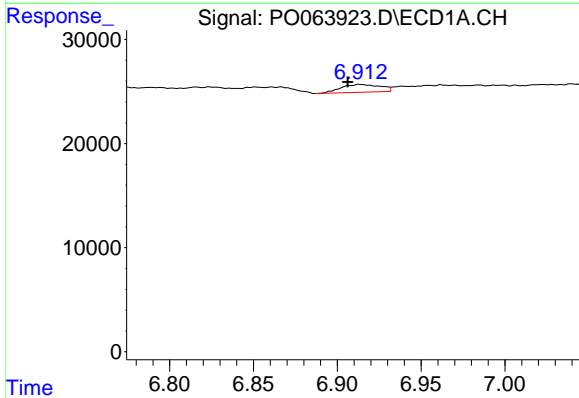
R.T.: 5.415 min
 Delta R.T.: -0.060 min
 Response: 26527
 Conc: 30.37 ng/ml

Instrument :
 ECD_O
 ClientSampled :
 B-8



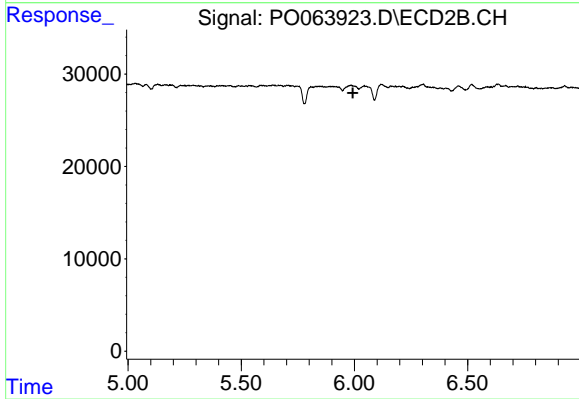
#21 AR-1248-1

R.T.: 4.670 min
 Delta R.T.: 0.022 min
 Response: 21023
 Conc: 32.62 ng/ml



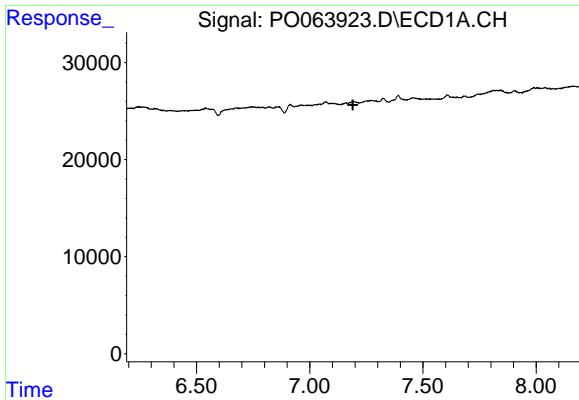
#28 AR-1254-3

R.T.: 6.914 min
 Delta R.T.: 0.007 min
 Response: 12255
 Conc: 3.90 ng/ml



#28 AR-1254-3

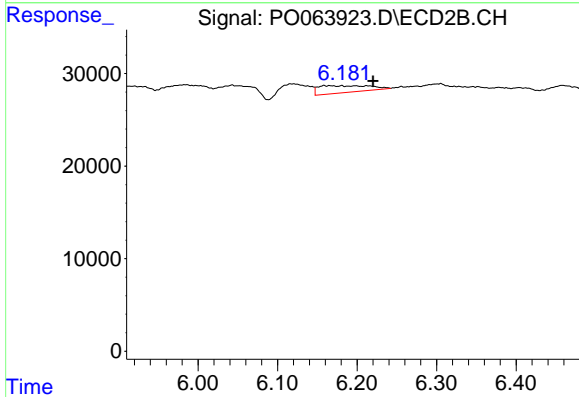
R.T.: 0.000 min
 Exp R.T. : 5.993 min
 Response: 0
 Conc: N.D.



#29 AR-1254-4

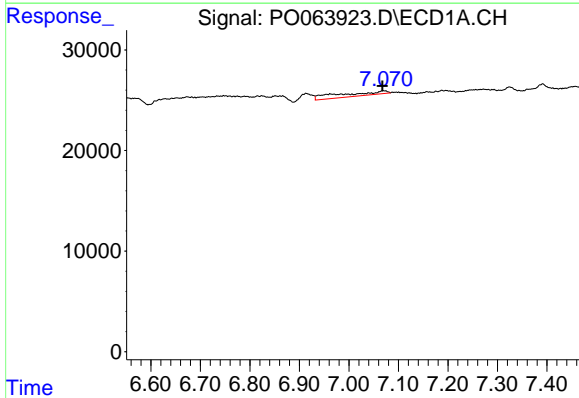
R.T.: 0.000 min
 Exp R.T.: 7.191 min
 Response: 0
 Conc: N.D.

Instrument :
 ECD_O
 ClientSampled :
 B-8



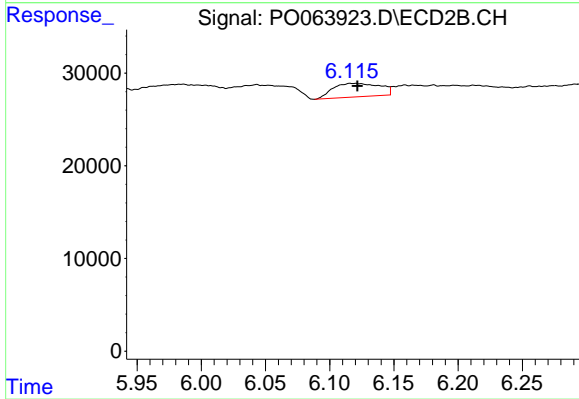
#29 AR-1254-4

R.T.: 6.181 min
 Delta R.T.: -0.040 min
 Response: 33591
 Conc: 18.94 ng/ml



#31 AR-1260-1

R.T.: 7.069 min
 Delta R.T.: 0.002 min
 Response: 25551
 Conc: 12.66 ng/ml



#31 AR-1260-1

R.T.: 6.119 min
 Delta R.T.: -0.002 min
 Response: 37016
 Conc: 23.57 ng/ml