

Data Path : Z:\pestpcbsrv\HPCHEM1\ECD_0\Data\PO112020\
 Data File : P0073398.D
 Signal(s) : Signal #1: ECD1A.CH Signal #2: ECD2B.CH
 Acq On : 20 Nov 2020 19:08
 Operator : DD\AJ
 Sample : L4792-06
 Misc :
 ALS Vial : 30 Sample Multiplier: 1

Instrument :
 ECD_0
ClientSampleId :
 304EM-001-0002

Integration File signal 1: autoint1.e
 Integration File signal 2: autoint2.e
 Quant Time: Dec 03 07:40:06 2020
 Quant Method : Z:\pestpcbsrv\HPCHEM1\ECD_0\methods\PO111720.M
 Quant Title : GC EXTRACTABLES
 QLast Update : Wed Nov 25 07:51:55 2020
 Response via : Initial Calibration
 Integrator: ChemStation 6890 Scale Mode: Small noise peaks clipped

Volume Inj. : 2 µl
 Signal #1 Phase : ZB-MR1 Signal #2 Phase: ZB-MR2
 Signal #1 Info : 30Mx0.32mmx 0.50µ Signal #2 Info : 30M x 0.32mm x 0.25µm

Compound	RT#1	RT#2	Resp#1	Resp#2	ng/ml	ng/ml

System Monitoring Compounds						
1) SA Tetrachlo...	4.946	4.012	1454718	915609	23.118	25.506
2) SA Decachlor...	10.979	9.280f	2976761	1637560	55.616	46.870
Target Compounds						
19) L4 AR-1242-4	6.508f	0.000	48128	0	33.736	N.D. #
20) L4 AR-1242-5	7.218f	0.000	44653	0	27.888	N.D. #
24) L5 AR-1248-4	7.218	0.000	44653	0	15.021	N.D. #
26) L6 AR-1254-1	7.184	0.000	63417	0	21.535	N.D. #
27) L6 AR-1254-2	7.417	0.000	152505	0	32.015	N.D. #
28) L6 AR-1254-3	7.811f	6.724	157837	255860	33.011	70.083 #
29) L6 AR-1254-4	8.090	6.975f	40993	51062	9.603	21.353 #
30) L6 AR-1254-5	8.506f	7.368	559039	157314	140.044	47.463 #
31) L7 AR-1260-1	7.964	6.840	237000	163785	79.249	72.262
32) L7 AR-1260-2	8.231	7.037	1019805	280100	238.021	104.038 #
33) L7 AR-1260-3	8.598	7.195	5335850	494936	1648.343	200.977 #
34) L7 AR-1260-4	8.845	7.671	3681938	2042145	1180.174	1002.014
35) L7 AR-1260-5	9.157	7.916	5235963	3045446	728.628	643.412
36) L8 AR-1262-1	8.598	7.368	5335850	157314	1079.209	98.056 #
37) L8 AR-1262-2	9.157	7.916	5235963	3045446	637.367	580.044
38) L8 AR-1262-3	9.469	8.202	14352583	7633440	2781.535	3648.448 #
39) L8 AR-1262-4	9.565	8.267	13306325	7400075	3363.386	1951.566 #
40) L8 AR-1262-5	10.231	8.759	8130324	4301163	2969.908	2499.972
41) L9 AR-1268-1	9.469	8.202	14352583	7633440	1369.066	1280.863
42) L9 AR-1268-2	9.565	8.267	13306325	7400075	1455.229	1407.563
43) L9 AR-1268-3	9.792	8.473	4368119	2317366	527.366	508.934
44) L9 AR-1268-4	10.231	8.759	8130324	4301163	2587.342	2329.871
45) L9 AR-1268-5	10.645	9.037	18497178	9988370	748.165	695.379

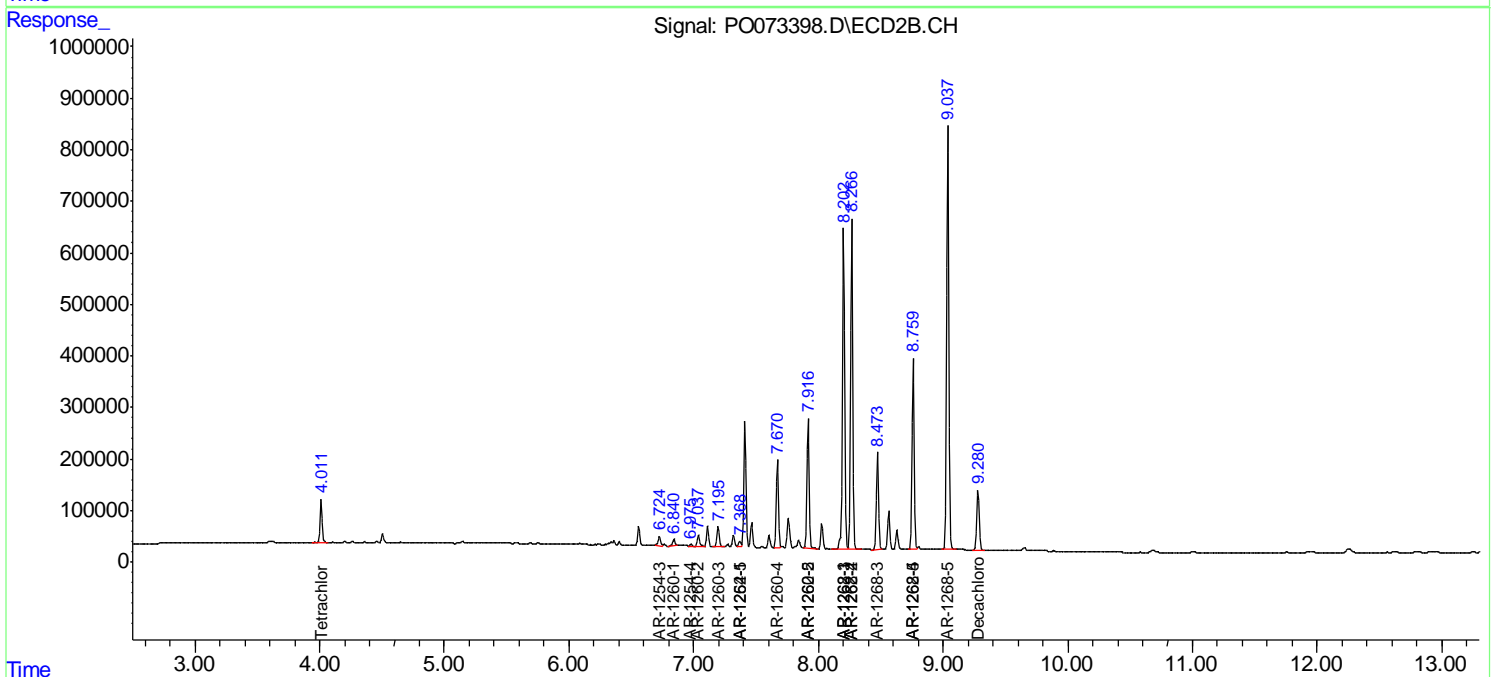
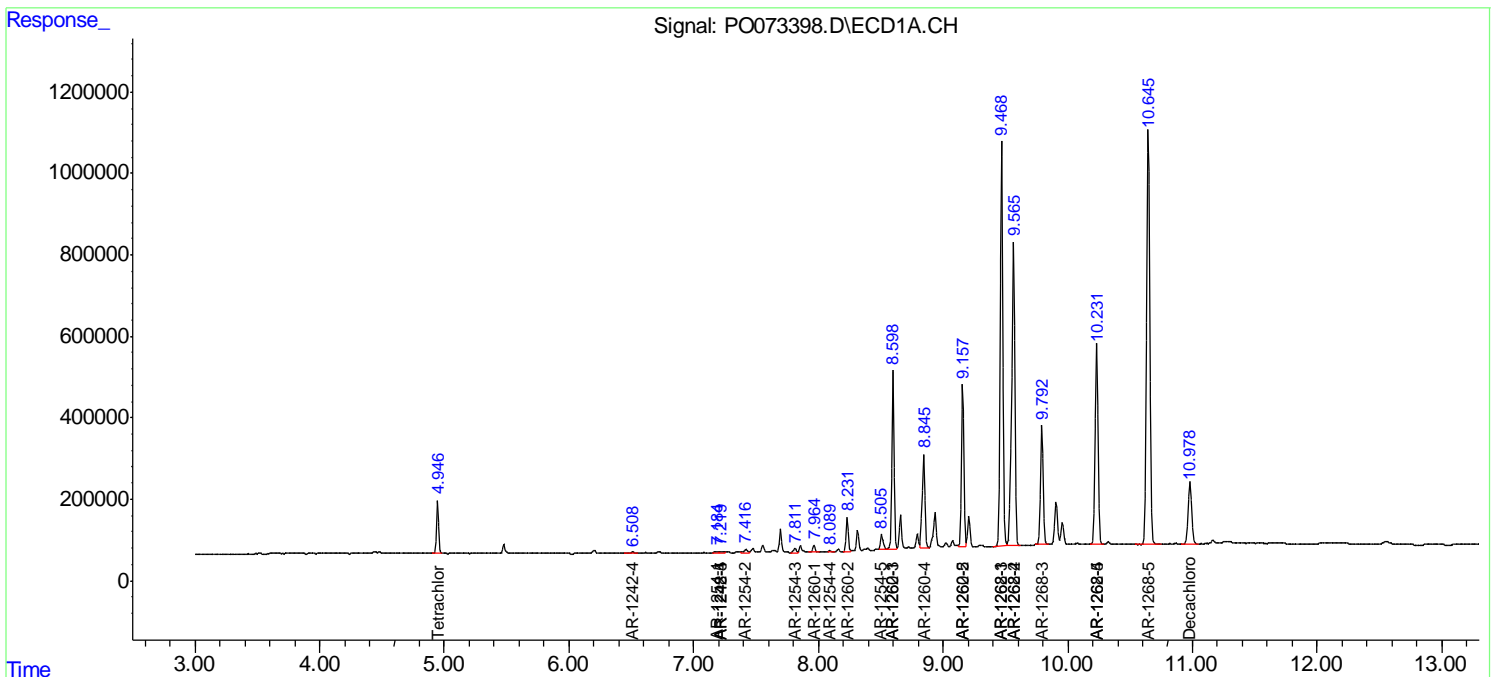
(f)=RT Delta > 1/2 Window (#)=Amounts differ by > 25% (m)=manual int.

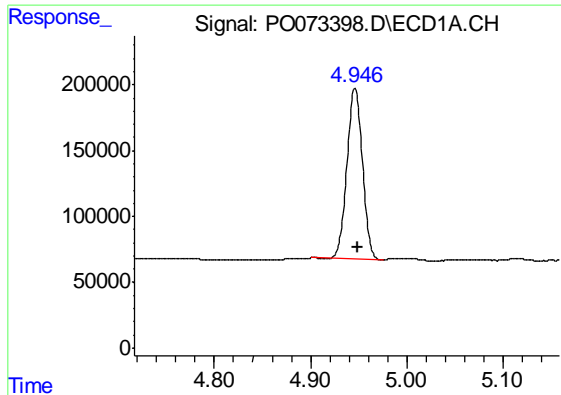
Data Path : Z:\pestpcbsrv\HPCHEM1\ECD_O\Data\PO112020\
 Data File : PO073398.D
 Signal(s) : Signal #1: ECD1A.CH Signal #2: ECD2B.CH
 Acq On : 20 Nov 2020 19:08
 Operator : DD\AJ
 Sample : L4792-06
 Misc :
 ALS Vial : 30 Sample Multiplier: 1

Instrument :
 ECD_O
 ClientSampled :
 304EM-001-0002

Integration File signal 1: autoint1.e
 Integration File signal 2: autoint2.e
 Quant Time: Dec 03 07:40:06 2020
 Quant Method : Z:\pestpcbsrv\HPCHEM1\ECD_O\methods\PO111720.M
 Quant Title : GC EXTRACTABLES
 QLast Update : Wed Nov 25 07:51:55 2020
 Response via : Initial Calibration
 Integrator: ChemStation 6890 Scale Mode: Small noise peaks clipped

Volume Inj. : 2 µl
 Signal #1 Phase : ZB-MR1 Signal #2 Phase: ZB-MR2
 Signal #1 Info : 30Mx0.32mmx 0.50µ Signal #2 Info : 30M x 0.32mm x 0.25µm

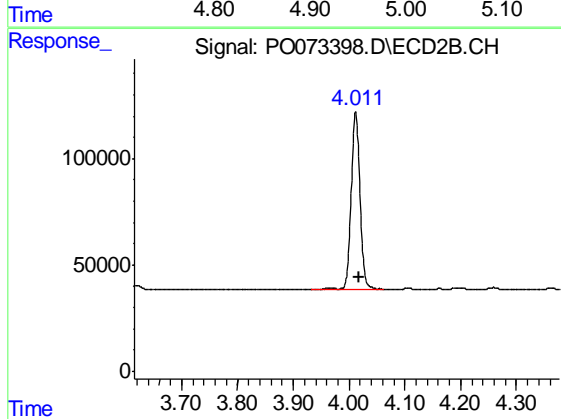




#1 Tetrachloro-m-xylene

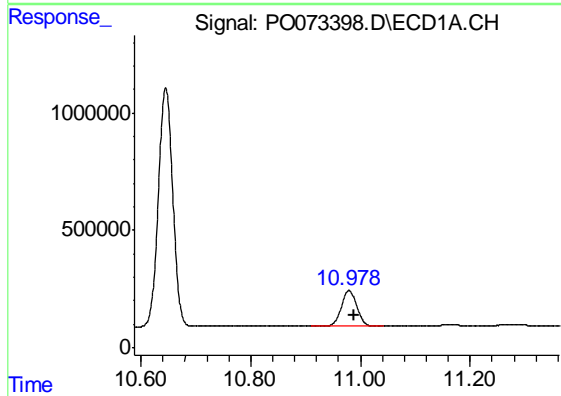
R.T.: 4.946 min
 Delta R.T.: -0.003 min
 Response: 1454718
 Conc: 23.12 ng/ml

Instrument :
 ECD_O
 ClientSampleId :
 304EM-001-0002



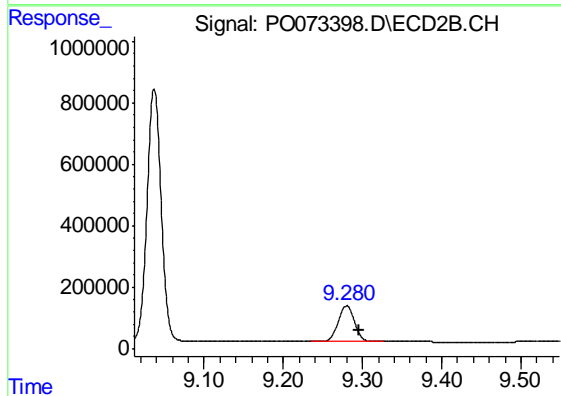
#1 Tetrachloro-m-xylene

R.T.: 4.012 min
 Delta R.T.: -0.006 min
 Response: 915609
 Conc: 25.51 ng/ml



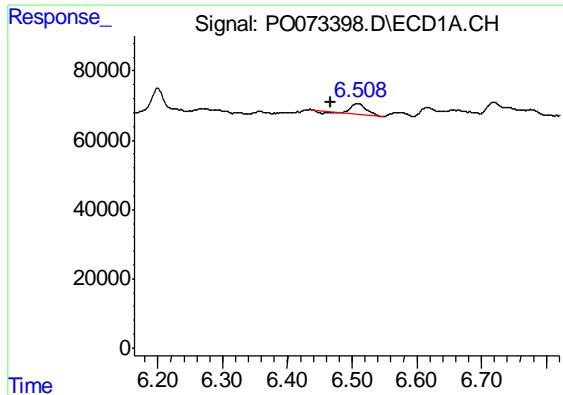
#2 Decachlorobiphenyl

R.T.: 10.979 min
 Delta R.T.: -0.008 min
 Response: 2976761
 Conc: 55.62 ng/ml



#2 Decachlorobiphenyl

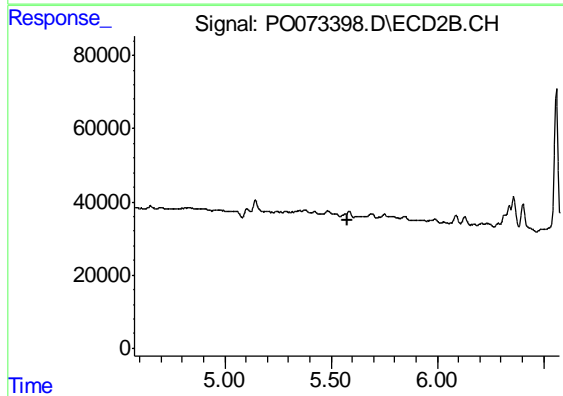
R.T.: 9.280 min
 Delta R.T.: -0.016 min
 Response: 1637560
 Conc: 46.87 ng/ml



#19 AR-1242-4

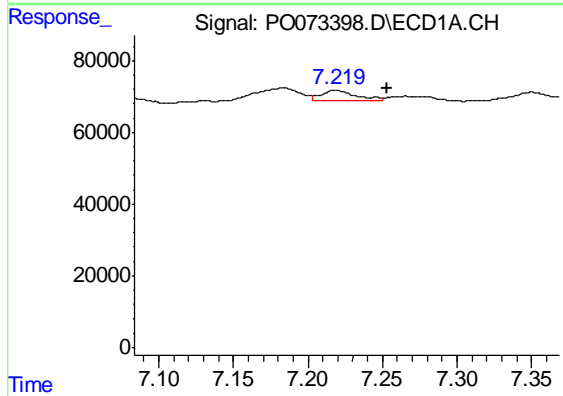
R.T.: 6.508 min
 Delta R.T.: 0.040 min
 Response: 48128
 Conc: 33.74 ng/ml

Instrument :
 ECD_O
 ClientSampleId :
 304EM-001-0002



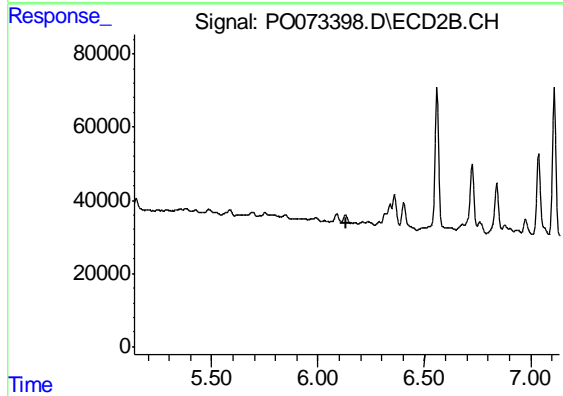
#19 AR-1242-4

R.T.: 0.000 min
 Exp R.T. : 5.575 min
 Response: 0
 Conc: N.D.



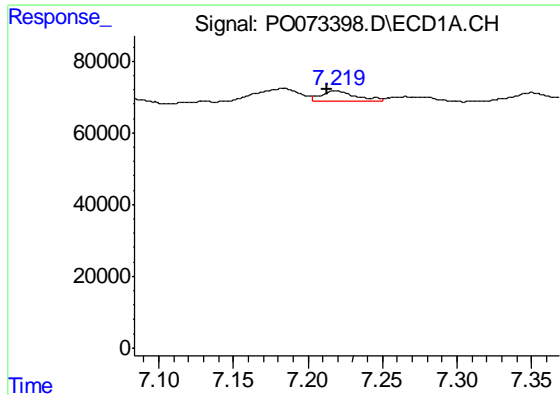
#20 AR-1242-5

R.T.: 7.218 min
 Delta R.T.: -0.035 min
 Response: 44653
 Conc: 27.89 ng/ml



#20 AR-1242-5

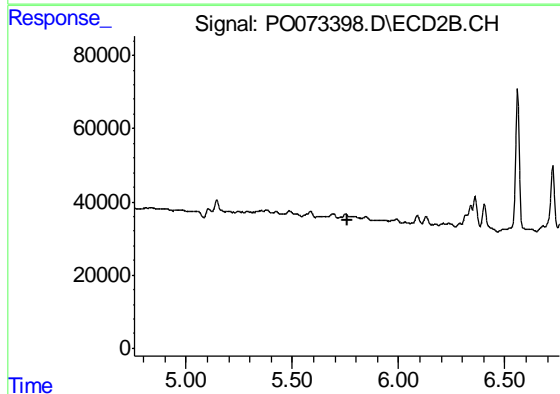
R.T.: 0.000 min
 Exp R.T. : 6.136 min
 Response: 0
 Conc: N.D.



#24 AR-1248-4

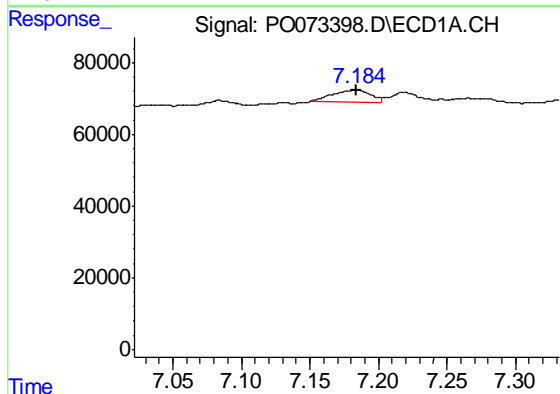
R.T.: 7.218 min
 Delta R.T.: 0.006 min
 Response: 44653
 Conc: 15.02 ng/ml

Instrument :
 ECD_O
 ClientSampleId :
 304EM-001-0002



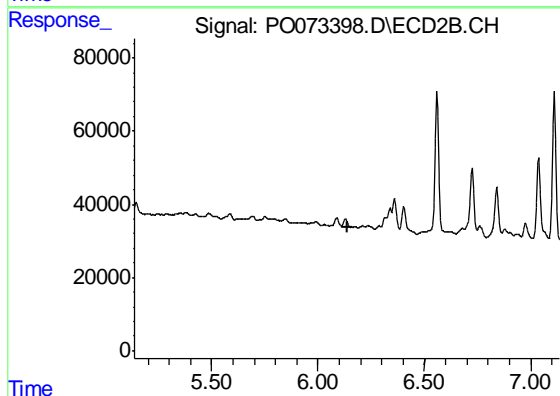
#24 AR-1248-4

R.T.: 0.000 min
 Exp R.T. : 5.757 min
 Response: 0
 Conc: N.D.



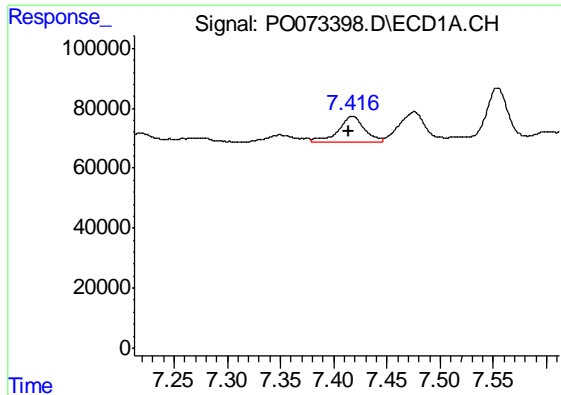
#26 AR-1254-1

R.T.: 7.184 min
 Delta R.T.: 0.000 min
 Response: 63417
 Conc: 21.53 ng/ml



#26 AR-1254-1

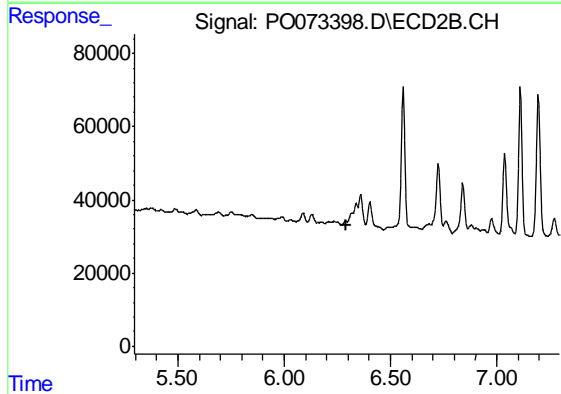
R.T.: 0.000 min
 Exp R.T. : 6.136 min
 Response: 0
 Conc: N.D.



#27 AR-1254-2

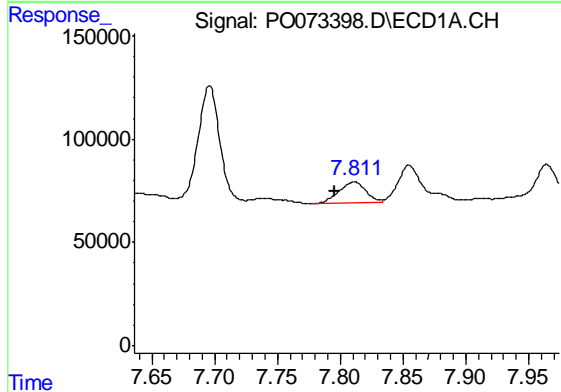
R.T.: 7.417 min
 Delta R.T.: 0.003 min
 Response: 152505
 Conc: 32.01 ng/ml

Instrument :
 ECD_O
 ClientSampleId :
 304EM-001-0002



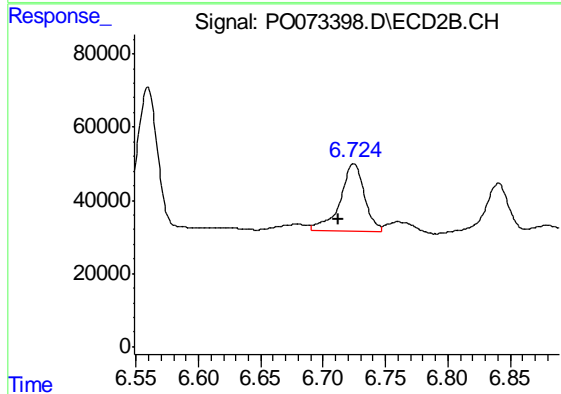
#27 AR-1254-2

R.T.: 0.000 min
 Exp R.T. : 6.295 min
 Response: 0
 Conc: N.D.



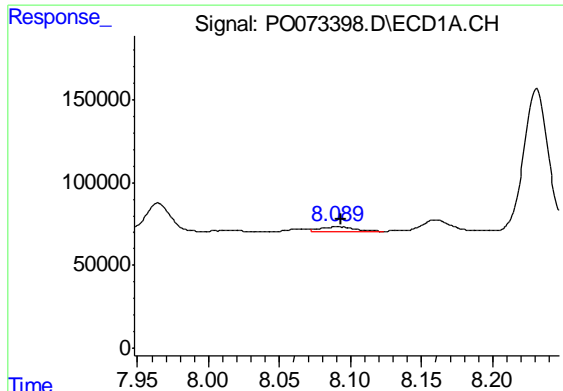
#28 AR-1254-3

R.T.: 7.811 min
 Delta R.T.: 0.015 min
 Response: 157837
 Conc: 33.01 ng/ml



#28 AR-1254-3

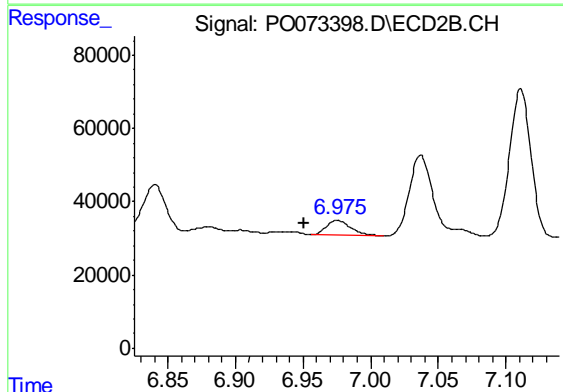
R.T.: 6.724 min
 Delta R.T.: 0.012 min
 Response: 255860
 Conc: 70.08 ng/ml



#29 AR-1254-4

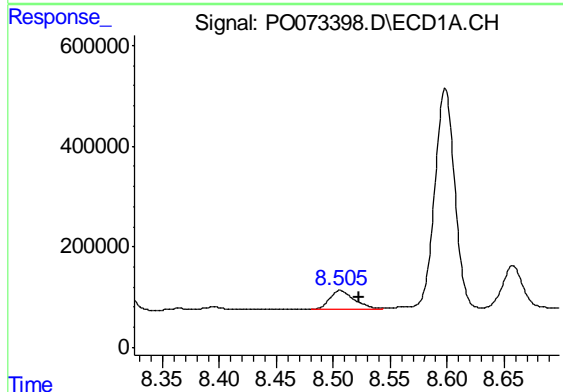
R.T.: 8.090 min
 Delta R.T.: -0.003 min
 Response: 40993
 Conc: 9.60 ng/ml

Instrument :
 ECD_O
 ClientSampleId :
 304EM-001-0002



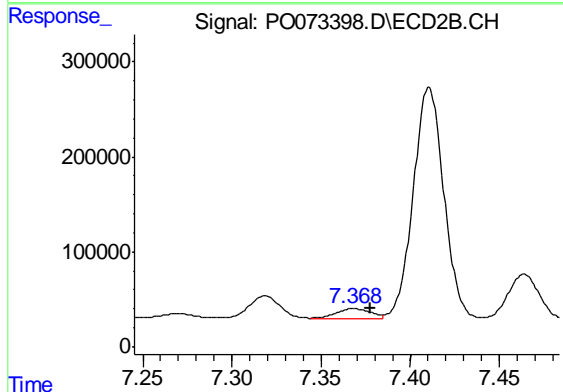
#29 AR-1254-4

R.T.: 6.975 min
 Delta R.T.: 0.025 min
 Response: 51062
 Conc: 21.35 ng/ml



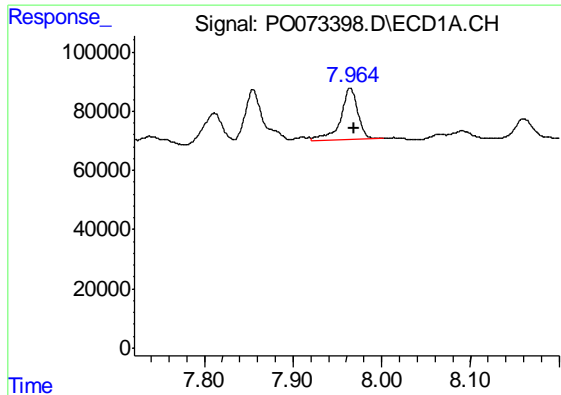
#30 AR-1254-5

R.T.: 8.506 min
 Delta R.T.: -0.017 min
 Response: 559039
 Conc: 140.04 ng/ml



#30 AR-1254-5

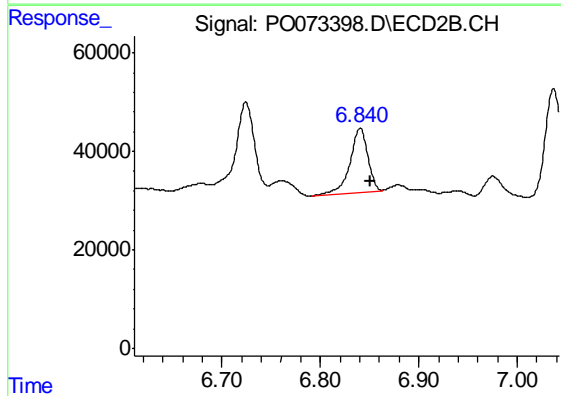
R.T.: 7.368 min
 Delta R.T.: -0.009 min
 Response: 157314
 Conc: 47.46 ng/ml



#31 AR-1260-1

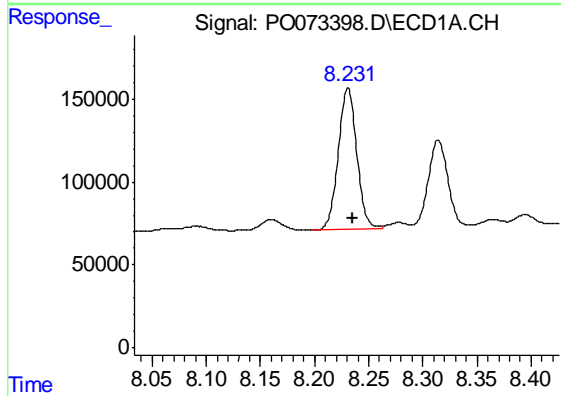
R.T.: 7.964 min
 Delta R.T.: -0.005 min
 Response: 237000
 Conc: 79.25 ng/ml

Instrument :
 ECD_O
 ClientSampleId :
 304EM-001-0002



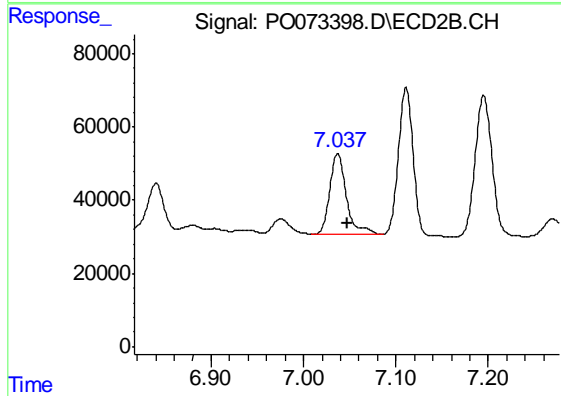
#31 AR-1260-1

R.T.: 6.840 min
 Delta R.T.: -0.011 min
 Response: 163785
 Conc: 72.26 ng/ml



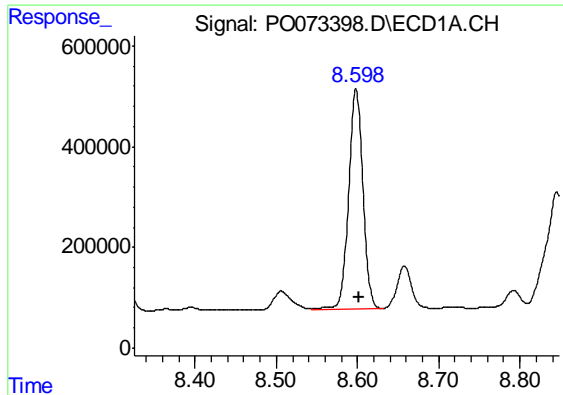
#32 AR-1260-2

R.T.: 8.231 min
 Delta R.T.: -0.005 min
 Response: 1019805
 Conc: 238.02 ng/ml



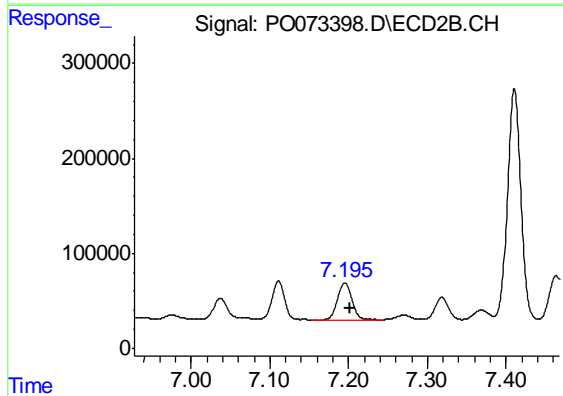
#32 AR-1260-2

R.T.: 7.037 min
 Delta R.T.: -0.011 min
 Response: 280100
 Conc: 104.04 ng/ml

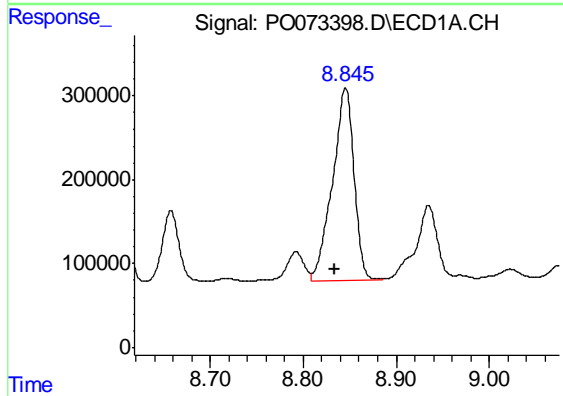


#33 AR-1260-3
 R.T.: 8.598 min
 Delta R.T.: -0.004 min
 Response: 5335850
 Conc: 1648.34 ng/ml

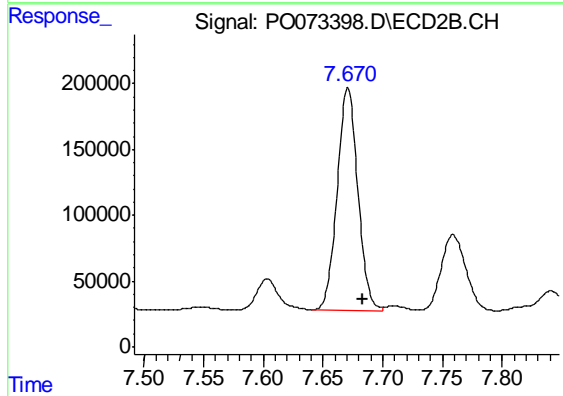
Instrument :
 ECD_O
 ClientSampleId :
 304EM-001-0002



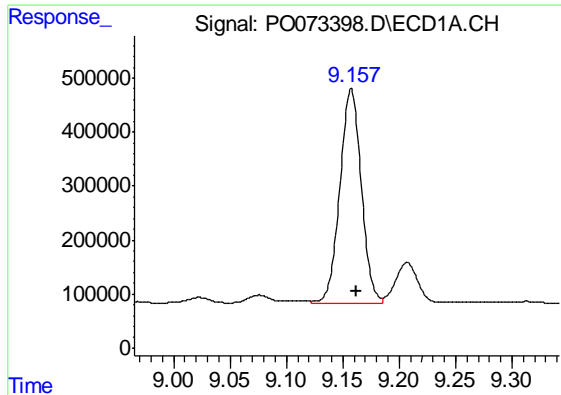
#33 AR-1260-3
 R.T.: 7.195 min
 Delta R.T.: -0.007 min
 Response: 494936
 Conc: 200.98 ng/ml



#34 AR-1260-4
 R.T.: 8.845 min
 Delta R.T.: 0.011 min
 Response: 3681938
 Conc: 1180.17 ng/ml



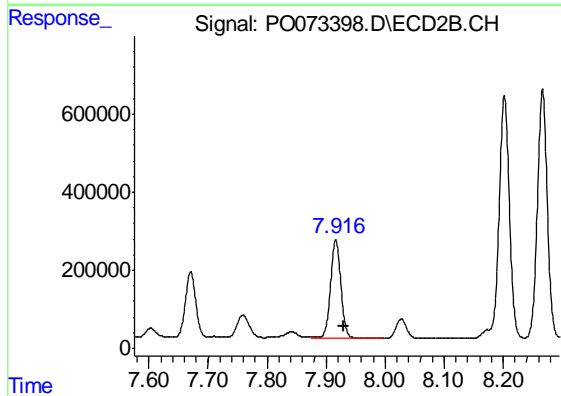
#34 AR-1260-4
 R.T.: 7.671 min
 Delta R.T.: -0.012 min
 Response: 2042145
 Conc: 1002.01 ng/ml



#35 AR-1260-5

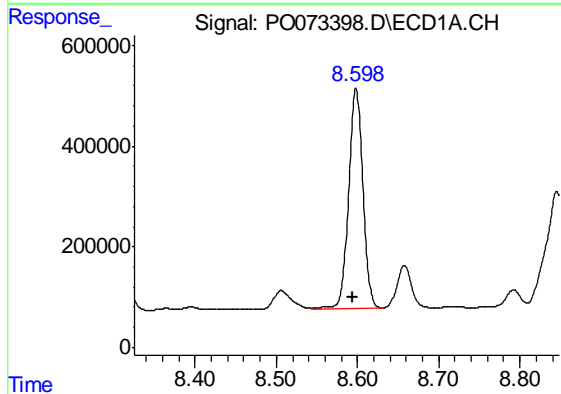
R.T.: 9.157 min
 Delta R.T.: -0.005 min
 Response: 5235963
 Conc: 728.63 ng/ml

Instrument :
 ECD_O
 ClientSampleId :
 304EM-001-0002



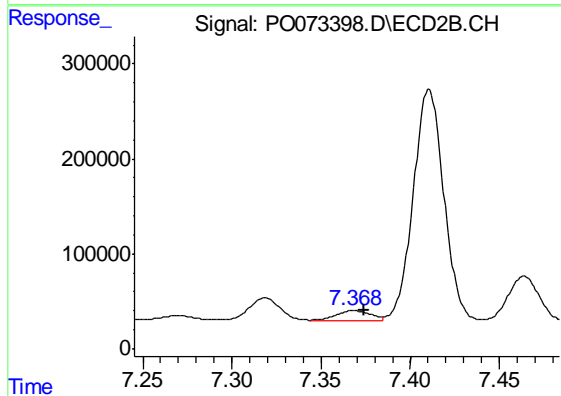
#35 AR-1260-5

R.T.: 7.916 min
 Delta R.T.: -0.013 min
 Response: 3045446
 Conc: 643.41 ng/ml



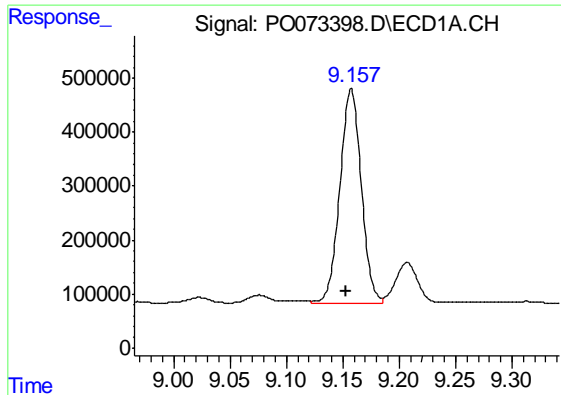
#36 AR-1262-1

R.T.: 8.598 min
 Delta R.T.: 0.004 min
 Response: 5335850
 Conc: 1079.21 ng/ml



#36 AR-1262-1

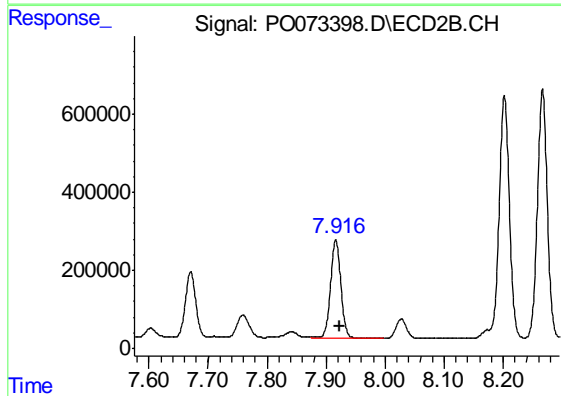
R.T.: 7.368 min
 Delta R.T.: -0.006 min
 Response: 157314
 Conc: 98.06 ng/ml



#37 AR-1262-2

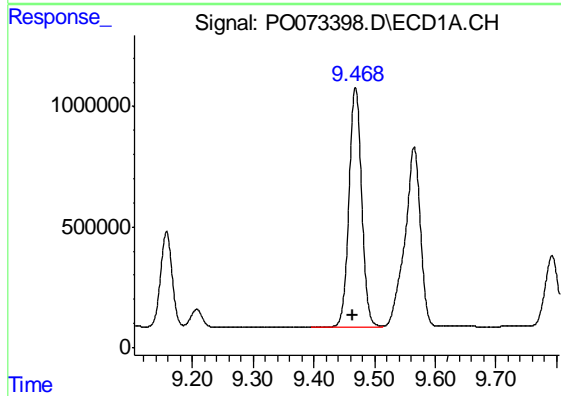
R.T.: 9.157 min
 Delta R.T.: 0.005 min
 Response: 5235963
 Conc: 637.37 ng/ml

Instrument :
 ECD_O
 ClientSampleId :
 304EM-001-0002



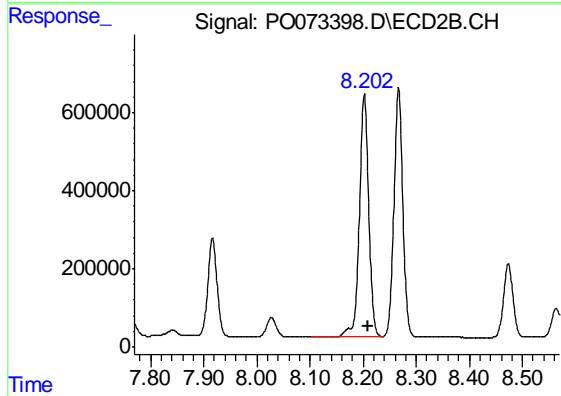
#37 AR-1262-2

R.T.: 7.916 min
 Delta R.T.: -0.008 min
 Response: 3045446
 Conc: 580.04 ng/ml



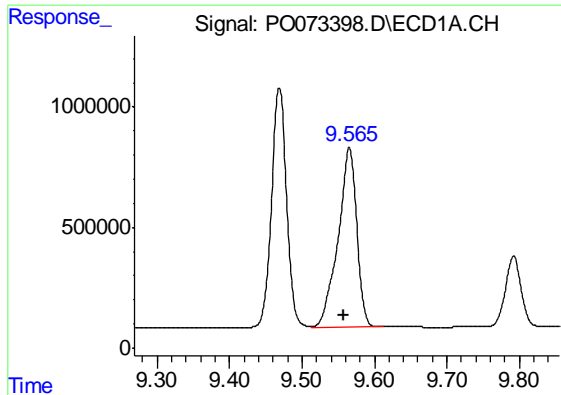
#38 AR-1262-3

R.T.: 9.469 min
 Delta R.T.: 0.005 min
 Response: 14352583
 Conc: 2781.53 ng/ml



#38 AR-1262-3

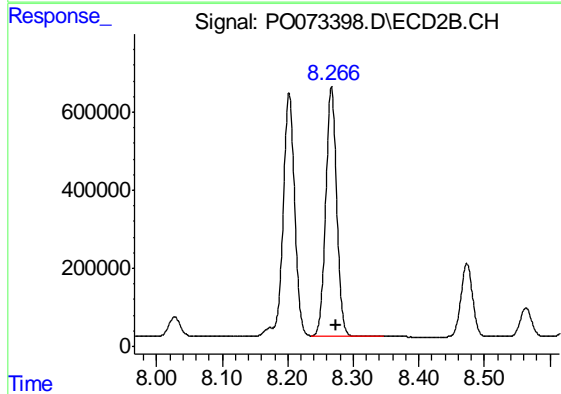
R.T.: 8.202 min
 Delta R.T.: -0.008 min
 Response: 7633440
 Conc: 3648.45 ng/ml



#39 AR-1262-4

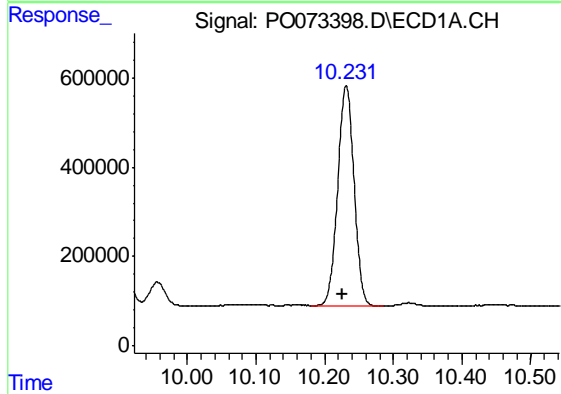
R.T.: 9.565 min
 Delta R.T.: 0.008 min
 Response: 13306325
 Conc: 3363.39 ng/ml

Instrument :
 ECD_O
 ClientSampleId :
 304EM-001-0002



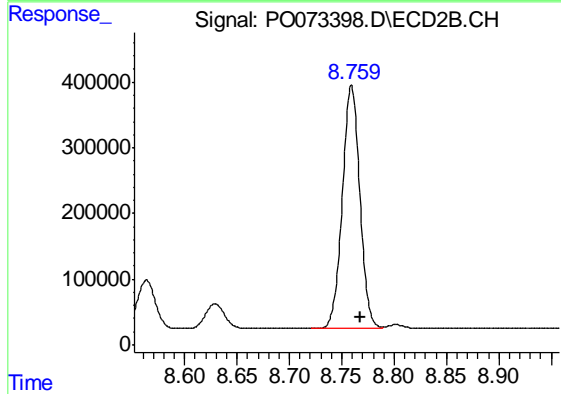
#39 AR-1262-4

R.T.: 8.267 min
 Delta R.T.: -0.006 min
 Response: 7400075
 Conc: 1951.57 ng/ml



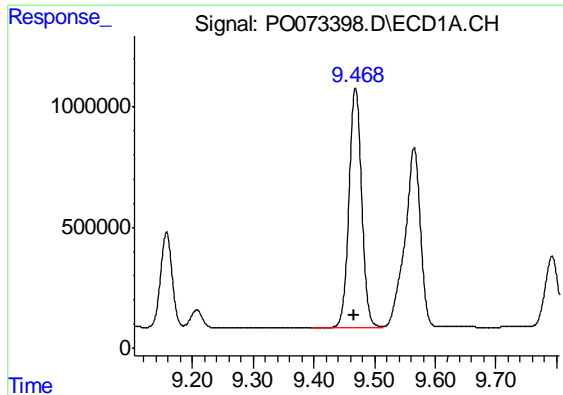
#40 AR-1262-5

R.T.: 10.231 min
 Delta R.T.: 0.006 min
 Response: 8130324
 Conc: 2969.91 ng/ml



#40 AR-1262-5

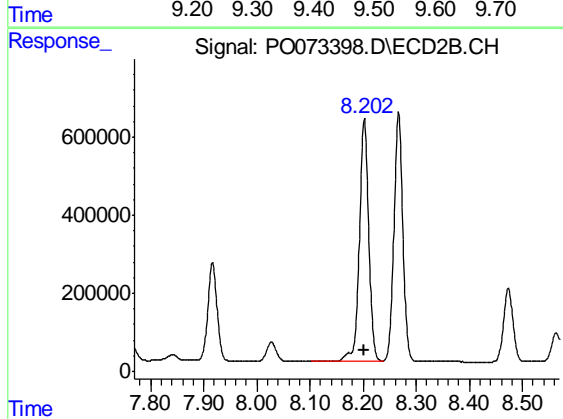
R.T.: 8.759 min
 Delta R.T.: -0.008 min
 Response: 4301163
 Conc: 2499.97 ng/ml



#41 AR-1268-1

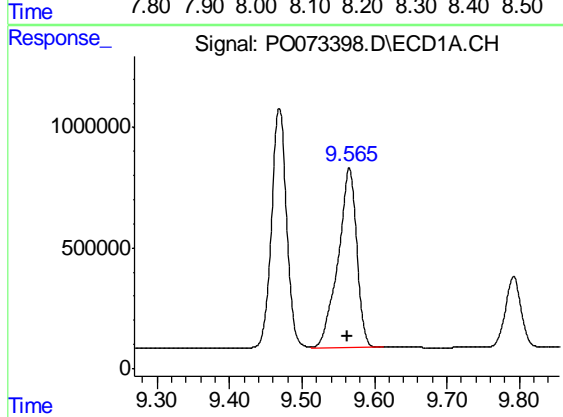
R.T.: 9.469 min
 Delta R.T.: 0.003 min
 Response: 14352583
 Conc: 1369.07 ng/ml

Instrument :
 ECD_O
 ClientSampleId :
 304EM-001-0002



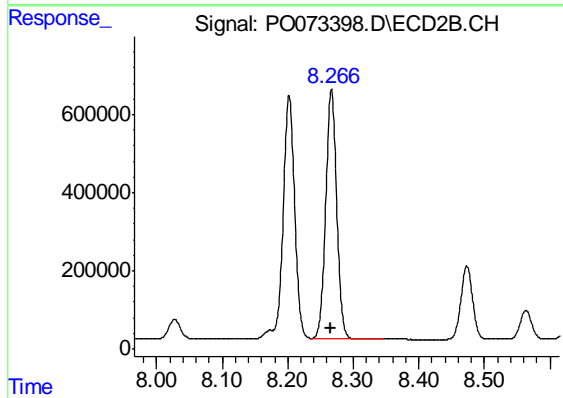
#41 AR-1268-1

R.T.: 8.202 min
 Delta R.T.: 0.000 min
 Response: 7633440
 Conc: 1280.86 ng/ml



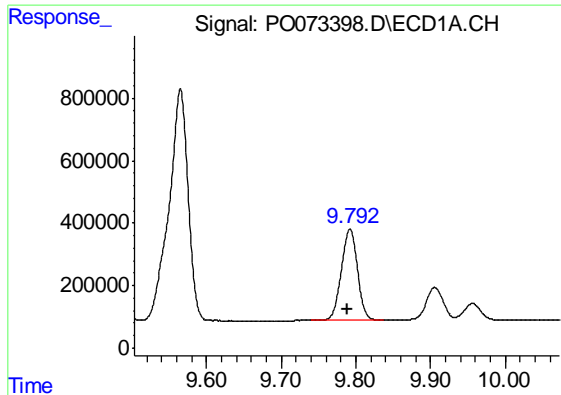
#42 AR-1268-2

R.T.: 9.565 min
 Delta R.T.: 0.002 min
 Response: 13306325
 Conc: 1455.23 ng/ml



#42 AR-1268-2

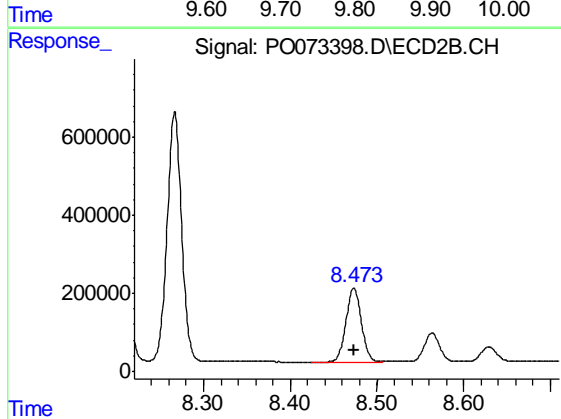
R.T.: 8.267 min
 Delta R.T.: 0.000 min
 Response: 7400075
 Conc: 1407.56 ng/ml



#43 AR-1268-3

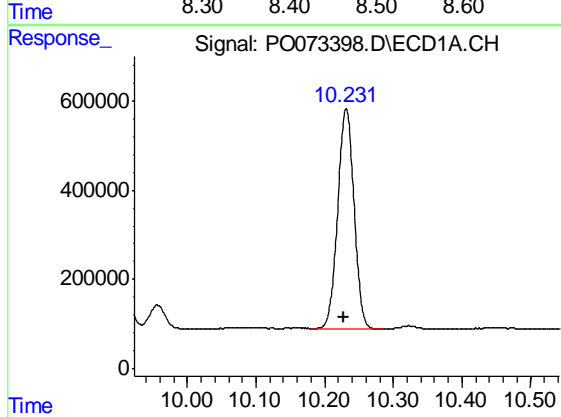
R.T.: 9.792 min
 Delta R.T.: 0.003 min
 Response: 4368119
 Conc: 527.37 ng/ml

Instrument :
 ECD_O
 ClientSampleId :
 304EM-001-0002



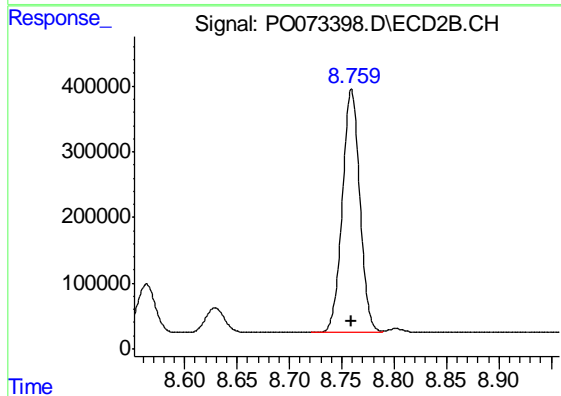
#43 AR-1268-3

R.T.: 8.473 min
 Delta R.T.: 0.000 min
 Response: 2317366
 Conc: 508.93 ng/ml



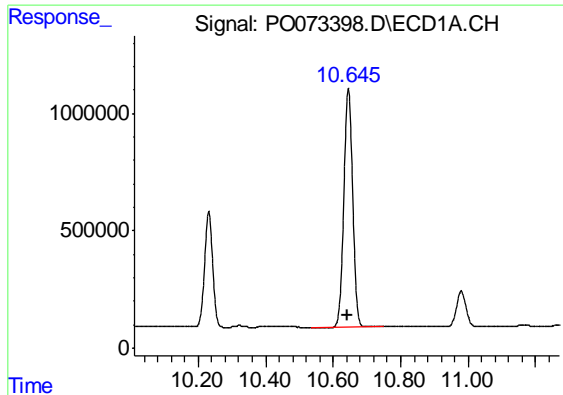
#44 AR-1268-4

R.T.: 10.231 min
 Delta R.T.: 0.003 min
 Response: 8130324
 Conc: 2587.34 ng/ml



#44 AR-1268-4

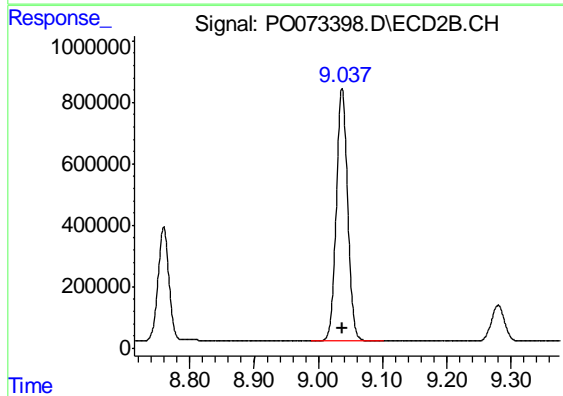
R.T.: 8.759 min
 Delta R.T.: 0.000 min
 Response: 4301163
 Conc: 2329.87 ng/ml



#45 AR-1268-5

R.T.: 10.645 min
Delta R.T.: 0.003 min
Response: 18497178
Conc: 748.17 ng/ml

Instrument :
ECD_O
ClientSampleId :
304EM-001-0002



#45 AR-1268-5

R.T.: 9.037 min
Delta R.T.: 0.000 min
Response: 9988370
Conc: 695.38 ng/ml