

Data Path : Z:\pestpcbsrv\HPCHEM1\ECD_0\Data\PO112118\
 Data File : PO051700.D
 Signal(s) : Signal #1: ECD1A.CH Signal #2: ECD2B.CH
 Acq On : 21 Nov 2018 10:43
 Operator : SM/SJ
 Sample : PB114960BL
 Misc :
 ALS Vial : 10 Sample Multiplier: 1

Instrument :
 ECD_0
 ClientSampleId :

Integration File signal 1: autoint1.e
 Integration File signal 2: autoint2.e
 Quant Time: Nov 21 23:42:07 2018
 Quant Method : Z:\pestpcbsrv\HPCHEM1\ECD_0\methods\PO112018.M
 Quant Title : GC EXTRACTABLES
 QLast Update : Wed Nov 21 00:55:28 2018
 Response via : Initial Calibration
 Integrator: ChemStation 6890 Scale Mode: Small noise peaks clipped

Volume Inj. : 2 µl
 Signal #1 Phase : ZB-MR1 Signal #2 Phase: ZB-MR2
 Signal #1 Info : 30Mx0.32mmx 0.50µ Signal #2 Info : 30M x 0.32mm x 0.25µm

Compound	RT#1	RT#2	Resp#1	Resp#2	ng/ml	ng/ml
System Monitoring Compounds						
1) SA Tetrachlo...	4.321	3.322	13764828	5023106	18.285	20.985
2) SA Decachlor...	9.941	8.044	7659866	3449622	16.512	15.958
Target Compounds						
3) L1 AR-1016-1	5.413	0.000	592774	0	26.231	N.D. #
16) L4 AR-1242-1	5.413	0.000	592774	0	33.014	N.D. #
21) L5 AR-1248-1	5.413	0.000	592774	0	38.504	N.D. #

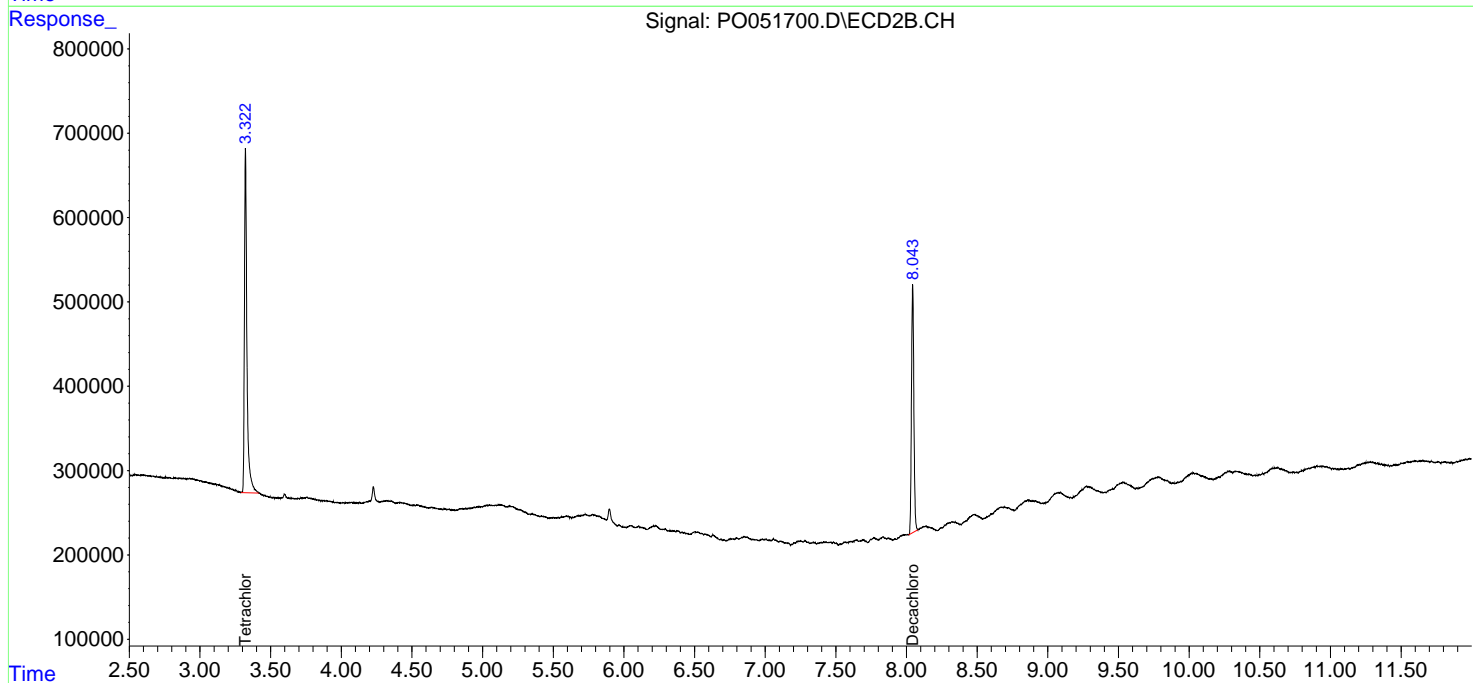
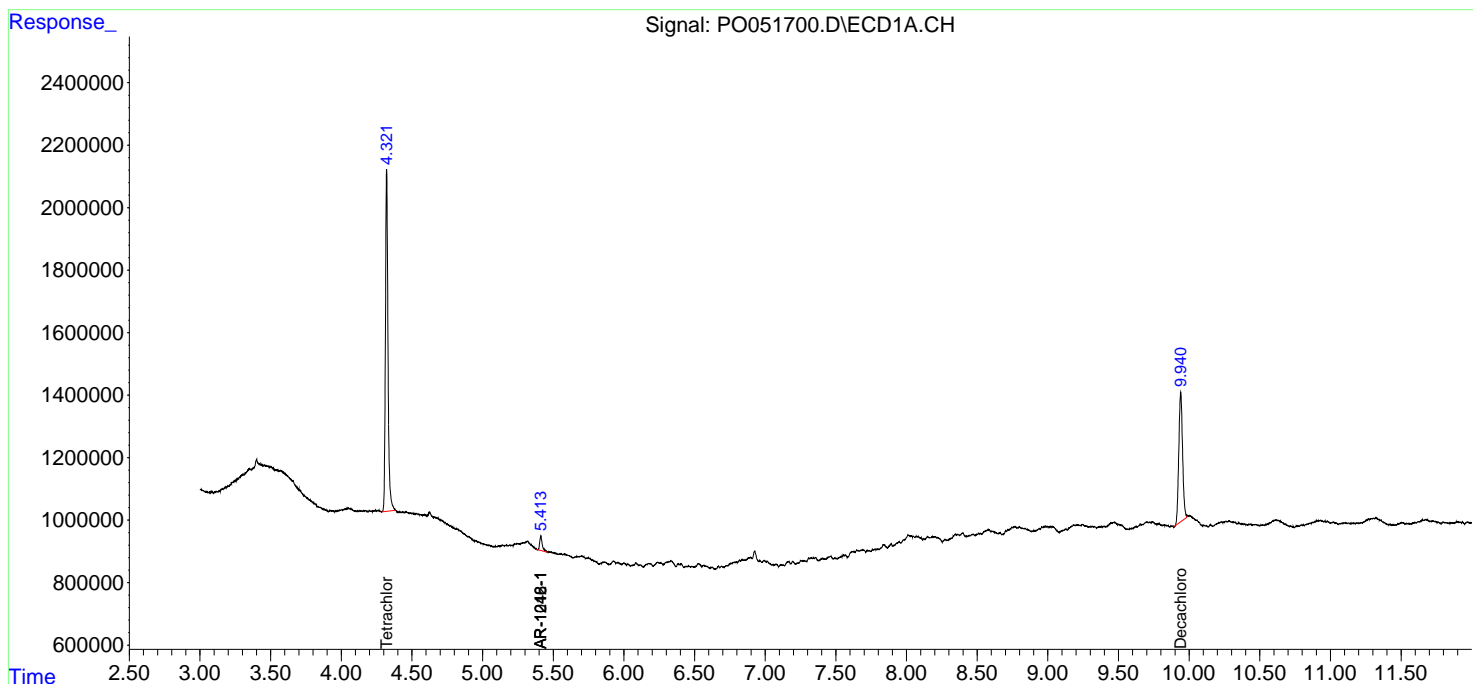
(f)=RT Delta > 1/2 Window (#)=Amounts differ by > 25% (m)=manual int.

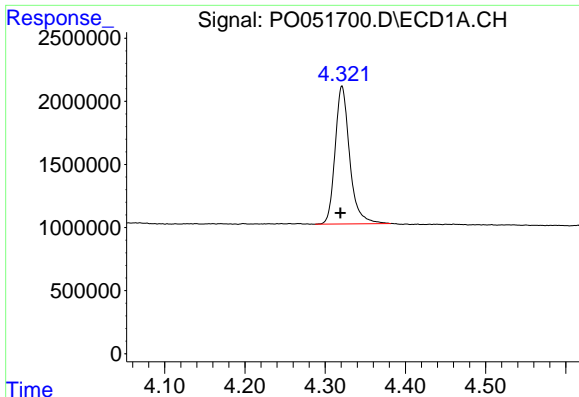
Data Path : Z:\pestpcbsrv\HPCHEM1\ECD_0\Data\PO112118\
 Data File : PO051700.D
 Signal(s) : Signal #1: ECD1A.CH Signal #2: ECD2B.CH
 Acq On : 21 Nov 2018 10:43
 Operator : SM/SJ
 Sample : PB114960BL
 Misc :
 ALS Vial : 10 Sample Multiplier: 1

Instrument :
 ECD_O
 ClientSampled :

Integration File signal 1: autoint1.e
 Integration File signal 2: autoint2.e
 Quant Time: Nov 21 23:42:07 2018
 Quant Method : Z:\pestpcbsrv\HPCHEM1\ECD_0\methods\PO112018.M
 Quant Title : GC EXTRACTABLES
 QLast Update : Wed Nov 21 00:55:28 2018
 Response via : Initial Calibration
 Integrator: ChemStation 6890 Scale Mode: Small noise peaks clipped

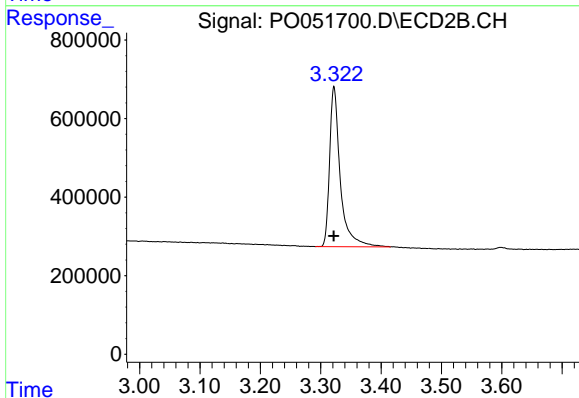
Volume Inj. : 2 µl
 Signal #1 Phase : ZB-MR1 Signal #2 Phase: ZB-MR2
 Signal #1 Info : 30Mx0.32mmx 0.50µ Signal #2 Info : 30M x 0.32mm x 0.25µm



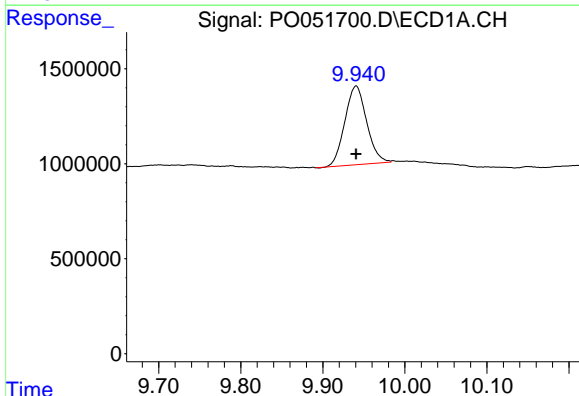


#1 Tetrachloro-m-xylene
 R.T.: 4.321 min
 Delta R.T.: 0.002 min
 Response: 13764828
 Conc: 18.28 ng/ml

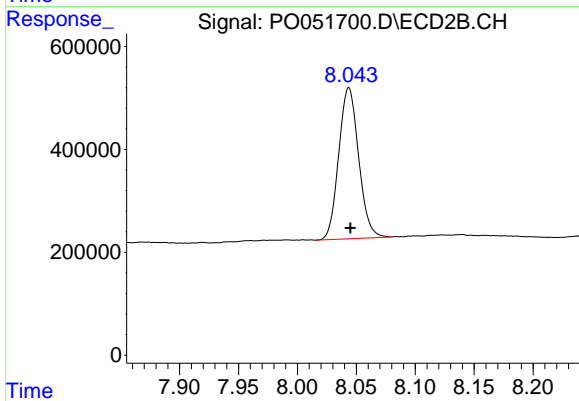
Instrument :
 ECD_O
 ClientSampled :



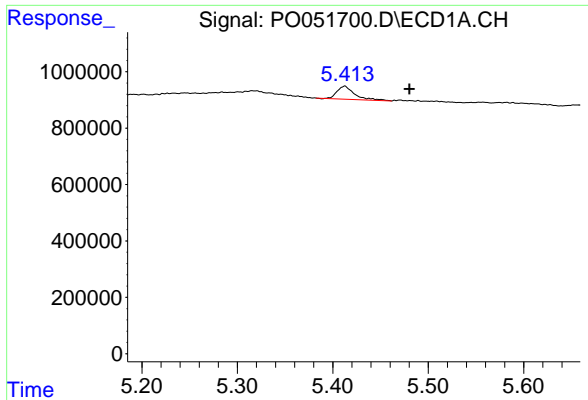
#1 Tetrachloro-m-xylene
 R.T.: 3.322 min
 Delta R.T.: 0.000 min
 Response: 5023106
 Conc: 20.99 ng/ml



#2 Decachlorobiphenyl
 R.T.: 9.941 min
 Delta R.T.: 0.000 min
 Response: 7659866
 Conc: 16.51 ng/ml

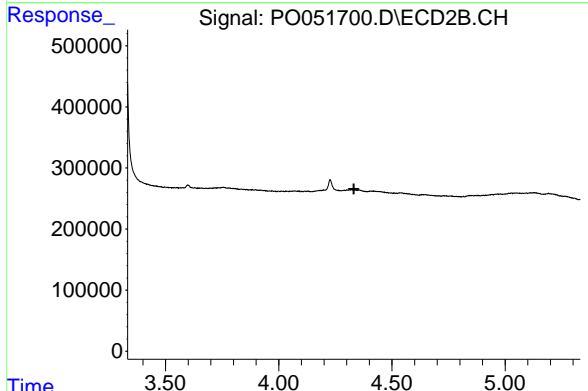


#2 Decachlorobiphenyl
 R.T.: 8.044 min
 Delta R.T.: -0.001 min
 Response: 3449622
 Conc: 15.96 ng/ml

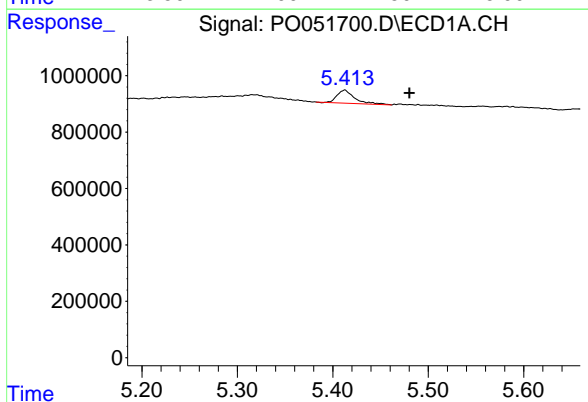


#3 AR-1016-1
 R.T.: 5.413 min
 Delta R.T.: -0.068 min
 Response: 592774
 Conc: 26.23 ng/ml

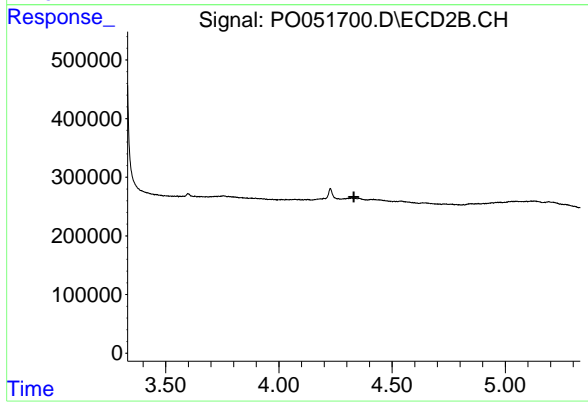
Instrument :
 ECD_O
 ClientSampled :



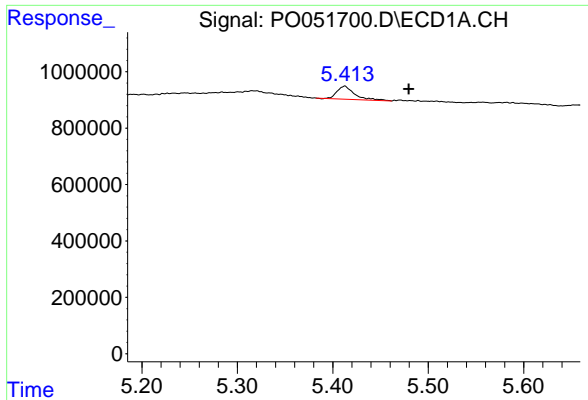
#3 AR-1016-1
 R.T.: 0.000 min
 Exp R.T. : 4.332 min
 Response: 0
 Conc: N.D.



#16 AR-1242-1
 R.T.: 5.413 min
 Delta R.T.: -0.068 min
 Response: 592774
 Conc: 33.01 ng/ml



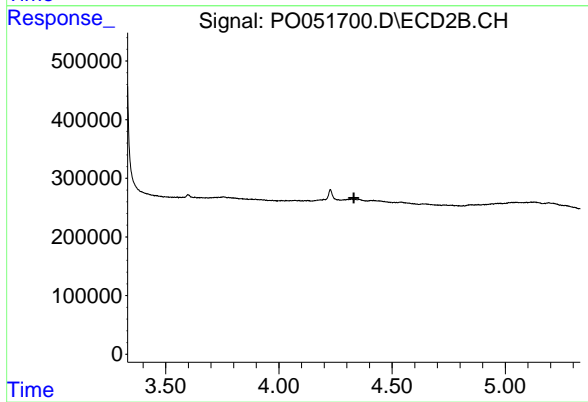
#16 AR-1242-1
 R.T.: 0.000 min
 Exp R.T. : 4.332 min
 Response: 0
 Conc: N.D.



#21 AR-1248-1

R.T.: 5.413 min
Delta R.T.: -0.067 min
Response: 592774
Conc: 38.50 ng/ml

Instrument :
ECD_O
ClientSampleId :



#21 AR-1248-1

R.T.: 0.000 min
Exp R.T. : 4.331 min
Response: 0
Conc: N.D.